

Data Path : Z:\voasrv\HPCHEM1\MSVOA_Y\Data\VY102025\
 Data File : VY023507.D
 Acq On : 20 Oct 2025 14:36
 Operator : SY/MD
 Sample : Q3383-01
 Misc : 5.00g/5.0mL/MSVOA_Y/SOIL/A
 ALS Vial : 14 Sample Multiplier: 1

Instrument :
 MSVOA_Y
 ClientSampleId :

Quant Time: Oct 21 03:59:11 2025
 Quant Method : Z:\voasrv\HPCHEM1\MSVOA_Y\methods\82Y100725S.M
 Quant Title : SW846 8260
 QLast Update : Wed Oct 08 05:12:50 2025
 Response via : Initial Calibration

Compound	R.T.	QIon	Response	Conc	Units	Dev(Min)

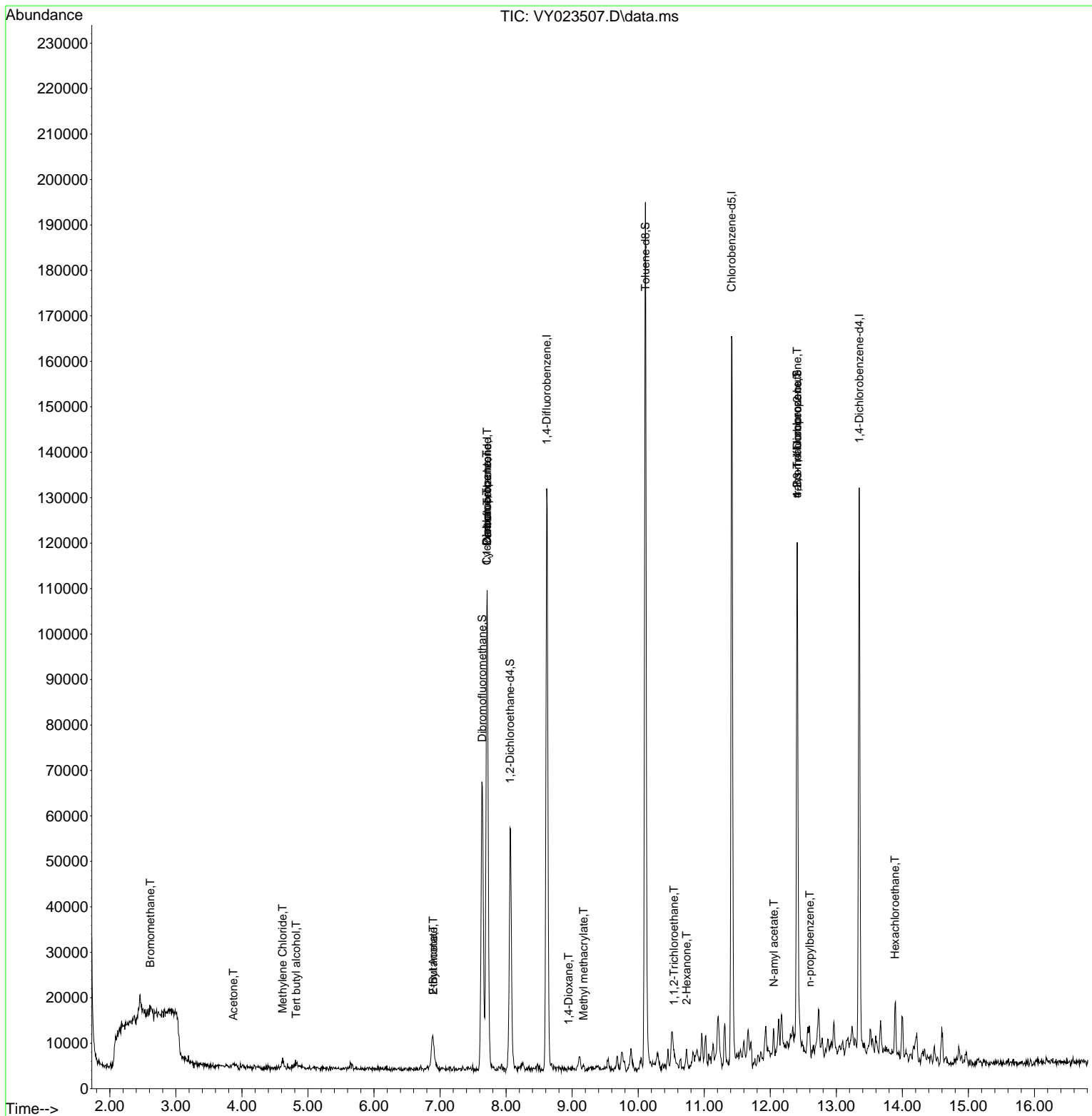
Internal Standards						
1) Pentafluorobenzene	7.713	168	87147	50.000	ug/l	0.00
34) 1,4-Difluorobenzene	8.616	114	117576	50.000	ug/l	0.00
63) Chlorobenzene-d5	11.414	117	96488	50.000	ug/l	0.00
72) 1,4-Dichlorobenzene-d4	13.347	152	34513	50.000	ug/l	0.00
System Monitoring Compounds						
33) 1,2-Dichloroethane-d4	8.061	65	40262	55.249	ug/l	0.00
Spiked Amount	50.000	Range	50 - 163	Recovery	=	110.500%
35) Dibromofluoromethane	7.640	113	46161	63.895	ug/l	0.00
Spiked Amount	50.000	Range	54 - 147	Recovery	=	127.800%
50) Toluene-d8	10.109	98	130149	48.374	ug/l	0.00
Spiked Amount	50.000	Range	58 - 134	Recovery	=	96.740%
62) 4-Bromofluorobenzene	12.408	95	33298	37.487	ug/l	0.00
Spiked Amount	50.000	Range	30 - 143	Recovery	=	74.980%
Target Compounds						
						Qvalue
5) Bromomethane	2.611	94	1151	1.232	ug/l	95
11) Tert butyl alcohol	4.824	59	760	14.019	ug/l #	72
16) Acetone	3.873	43	1308	7.539	ug/l #	73
20) Methylene Chloride	4.616	84	1019	1.086	ug/l #	83
25) 2-Butanone	6.897	43	410	1.936	ug/l #	40
31) Cyclohexane	7.707	56	1631	1.345	ug/l #	63
36) 1,1-Dichloropropene	7.707	75	6077	6.354	ug/l #	50
37) Ethyl Acetate	6.897	43	410	1.082	ug/l #	1
38) Carbon Tetrachloride	7.713	117	7460	6.432	ug/l #	17
48) Methyl methacrylate	9.171	41	374	1.054	ug/l #	28
49) 1,4-Dioxane	8.945	88	25	5.097	ug/l #	30
55) 1,1,2-Trichloroethane	10.542	97	1047	1.840	ug/l #	24
59) 2-Hexanone	10.731	43	1386	4.968	ug/l #	20
74) N-amyl acetate	12.054	43	1201	2.940	ug/l #	77
76) 1,2,3-Trichloropropane	12.408	75	16466	54.076	ug/l #	100
78) n-propylbenzene	12.597	91	4281	1.627	ug/l	99
81) trans-1,4-Dichloro-2-b...	12.408	75	16466	132.605	ug/l #	15
90) Hexachloroethane	13.889	117	849	1.905	ug/l #	6

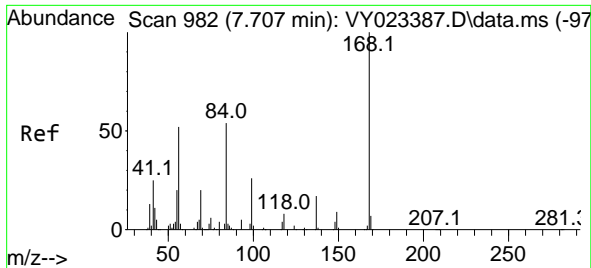
(#) = qualifier out of range (m) = manual integration (+) = signals summed

Data Path : Z:\voasrv\HPCHEM1\MSVOA_Y\Data\VY102025\
 Data File : VY023507.D
 Acq On : 20 Oct 2025 14:36
 Operator : SY/MD
 Sample : Q3383-01
 Misc : 5.00g/5.0mL/MSVOA_Y/SOIL/A
 ALS Vial : 14 Sample Multiplier: 1

Instrument :
 MSVOA_Y
 ClientSampleId :

Quant Time: Oct 21 03:59:11 2025
 Quant Method : Z:\voasrv\HPCHEM1\MSVOA_Y\methods\82Y100725S.M
 Quant Title : SW846 8260
 QLast Update : Wed Oct 08 05:12:50 2025
 Response via : Initial Calibration

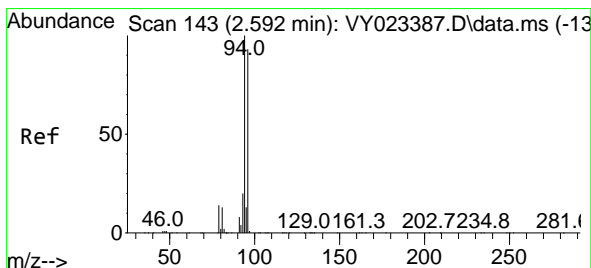
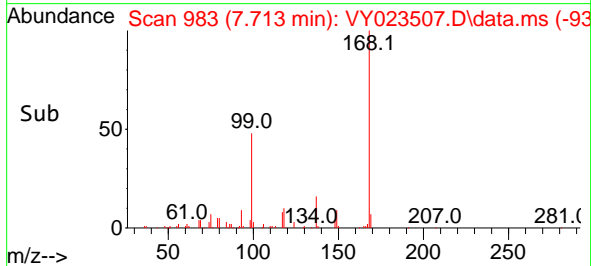
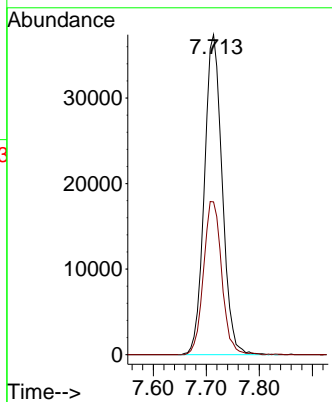
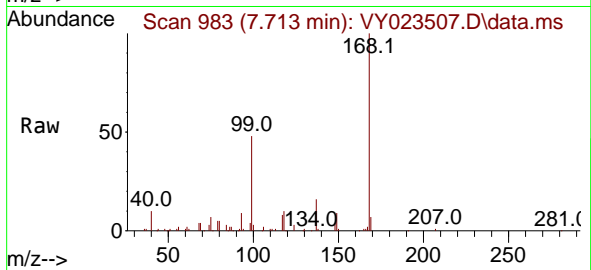




#1
 Pentafluorobenzene
 Concen: 50.000 ug/l
 RT: 7.713 min Scan# 99
 Delta R.T. 0.006 min
 Lab File: VY023507.D
 Acq: 20 Oct 2025 14:36

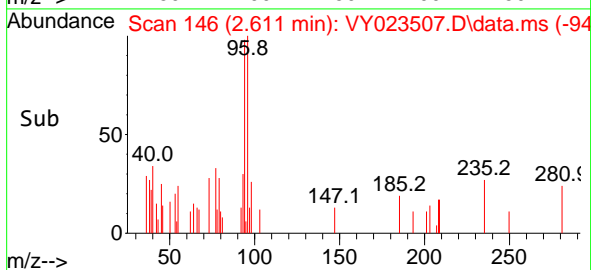
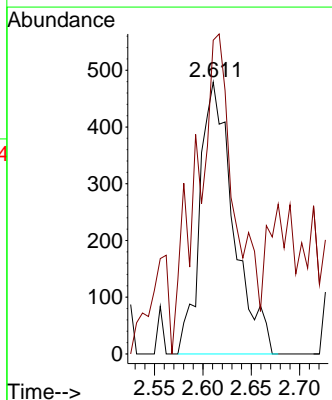
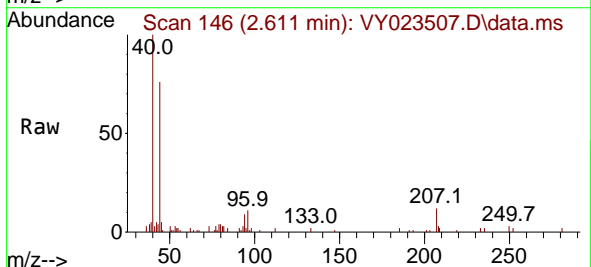
Instrument :
 MSVOA_Y
 ClientSampleId :

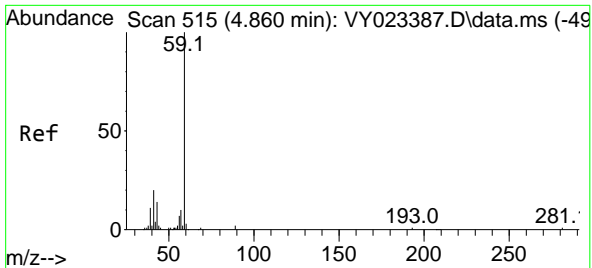
Tgt Ion:168 Resp: 87147
 Ion Ratio Lower Upper
 168 100
 99 47.8 39.7 59.5



#5
 Bromomethane
 Concen: 1.232 ug/l
 RT: 2.611 min Scan# 146
 Delta R.T. 0.018 min
 Lab File: VY023507.D
 Acq: 20 Oct 2025 14:36

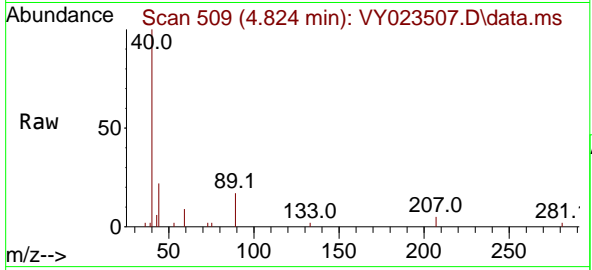
Tgt Ion: 94 Resp: 1151
 Ion Ratio Lower Upper
 94 100
 96 88.1 74.5 111.7



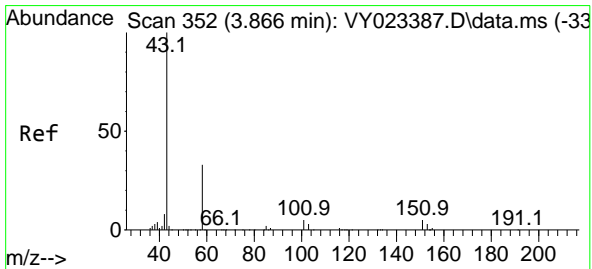
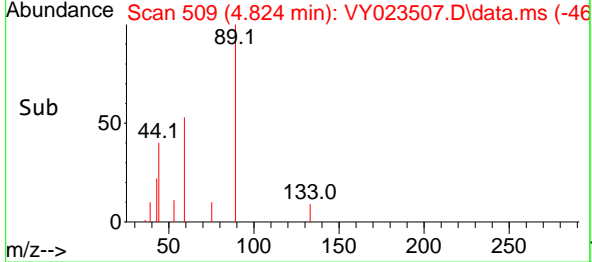
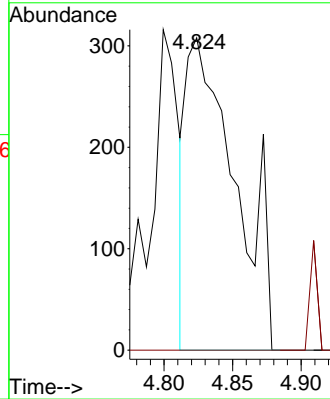


#11
 Tert butyl alcohol
 Concen: 14.019 ug/l
 RT: 4.824 min Scan# 509
 Delta R.T. -0.037 min
 Lab File: VY023507.D
 Acq: 20 Oct 2025 14:36

Instrument : MSVOA_Y
 ClientSampleId :

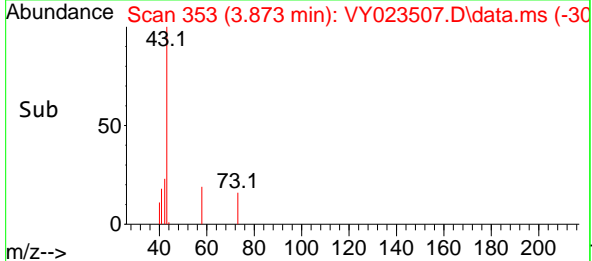
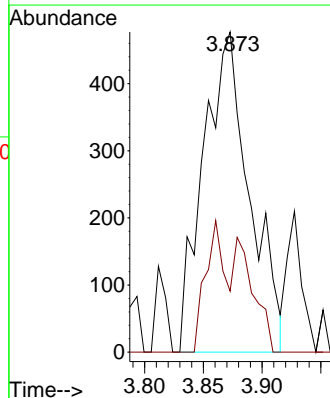
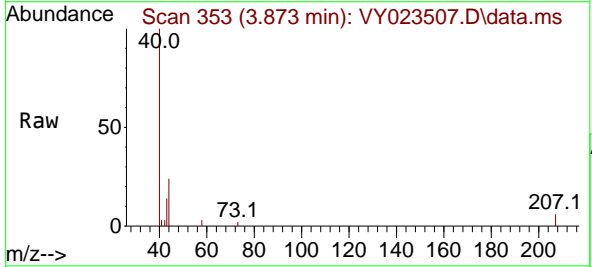


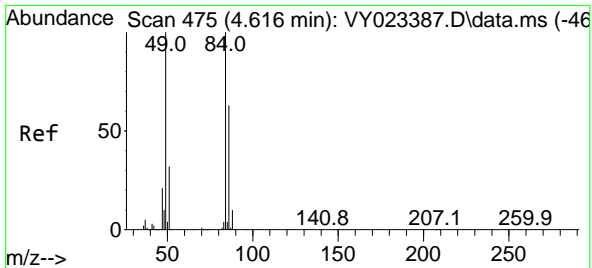
Tgt Ion: 59 Resp: 760
 Ion Ratio Lower Upper
 59 100
 57 0.0 8.3 12.5#



#16
 Acetone
 Concen: 7.539 ug/l
 RT: 3.873 min Scan# 353
 Delta R.T. 0.006 min
 Lab File: VY023507.D
 Acq: 20 Oct 2025 14:36

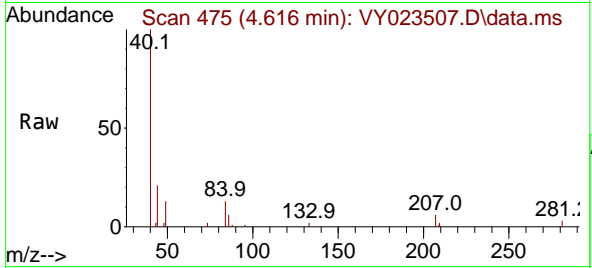
Tgt Ion: 43 Resp: 1308
 Ion Ratio Lower Upper
 43 100
 58 19.1 27.7 41.5#





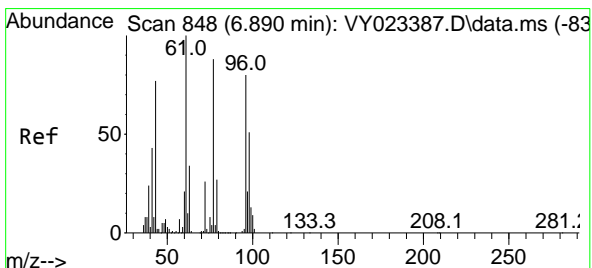
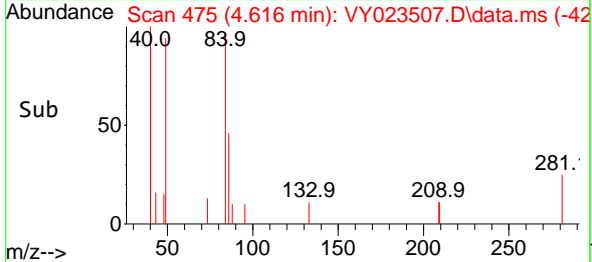
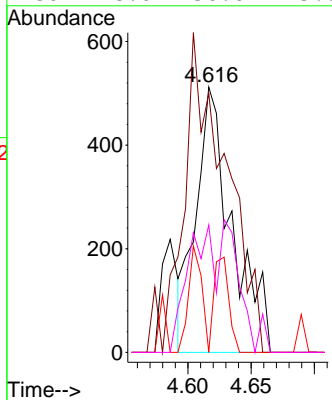
#20
 Methylene Chloride
 Concen: 1.086 ug/l
 RT: 4.616 min Scan# 41
 Delta R.T. 0.000 min
 Lab File: VY023507.D
 Acq: 20 Oct 2025 14:36

Instrument :
 MSVOA_Y
 ClientSampleId :



Tgt Ion: 84 Resp: 1019

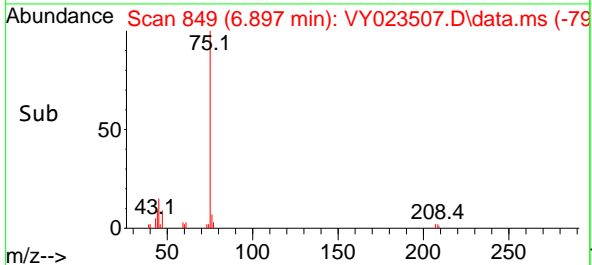
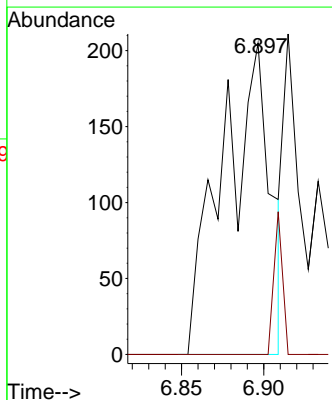
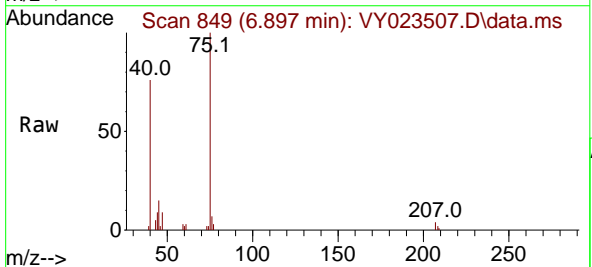
Ion	Ratio	Lower	Upper
84	100		
49	97.7	80.2	120.4
51	0.0	25.9	38.9#
86	48.0	50.6	75.8#

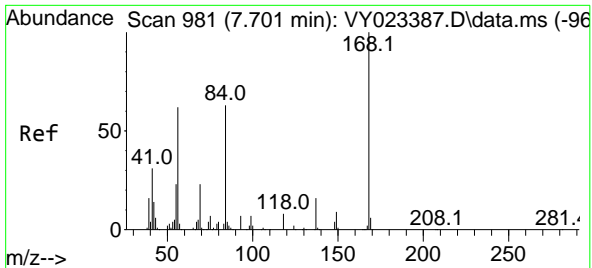


#25
 2-Butanone
 Concen: 1.936 ug/l
 RT: 6.897 min Scan# 849
 Delta R.T. 0.006 min
 Lab File: VY023507.D
 Acq: 20 Oct 2025 14:36

Tgt Ion: 43 Resp: 410

Ion	Ratio	Lower	Upper
43	100		
72	0.0	27.4	41.2#

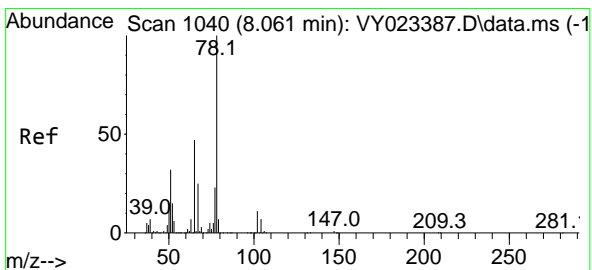
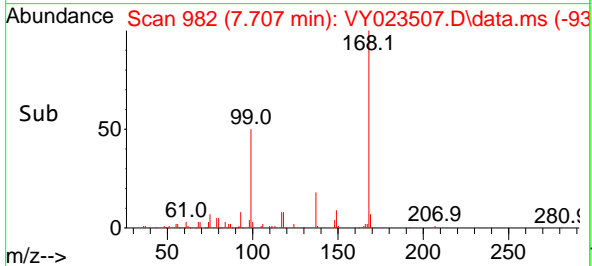
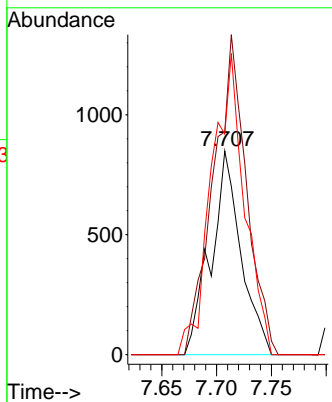
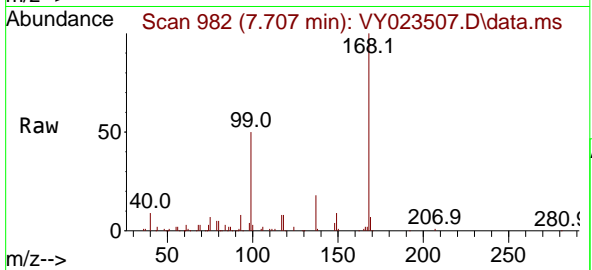




#31
 Cyclohexane
 Concen: 1.345 ug/l
 RT: 7.707 min Scan# 91
 Delta R.T. 0.006 min
 Lab File: VY023507.D
 Acq: 20 Oct 2025 14:36

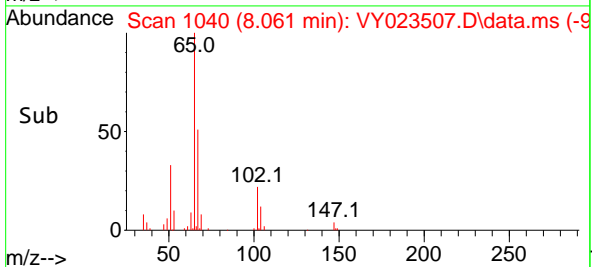
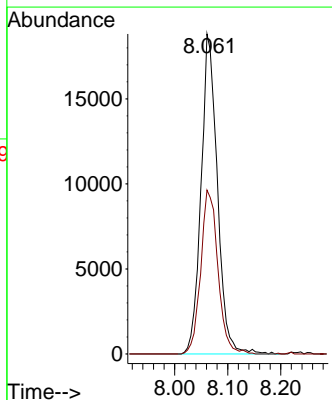
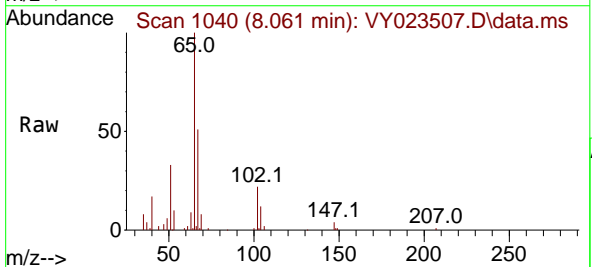
Instrument :
 MSVOA_Y
 ClientSampleId :

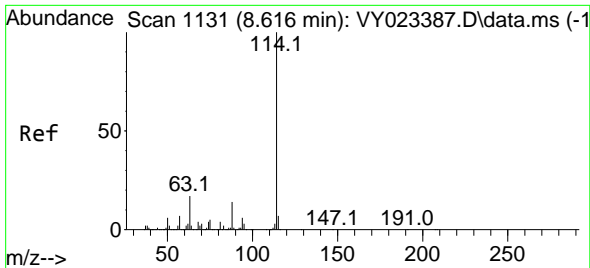
Tgt Ion	Resp	Lower	Upper
56	1631		
56	100		
69	109.4	30.0	45.0#
84	108.4	81.2	121.8



#33
 1,2-Dichloroethane-d4
 Concen: 55.249 ug/l
 RT: 8.061 min Scan# 1040
 Delta R.T. 0.000 min
 Lab File: VY023507.D
 Acq: 20 Oct 2025 14:36

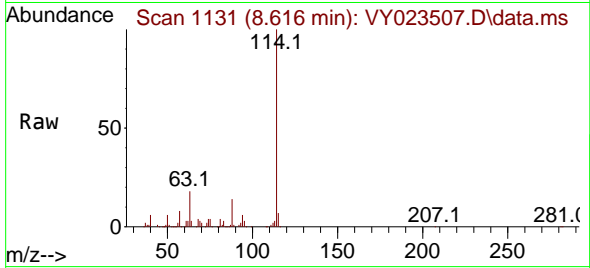
Tgt Ion	Resp	Lower	Upper
65	40262		
65	100		
67	53.9	0.0	105.8





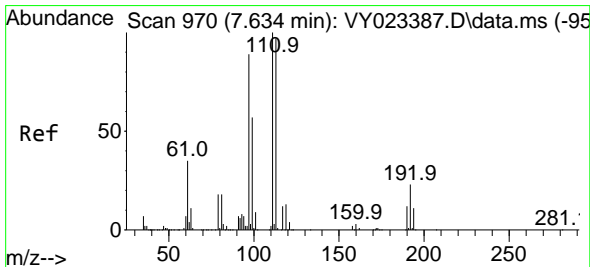
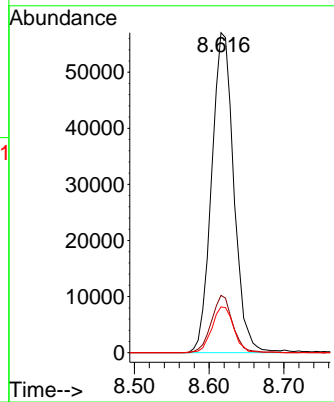
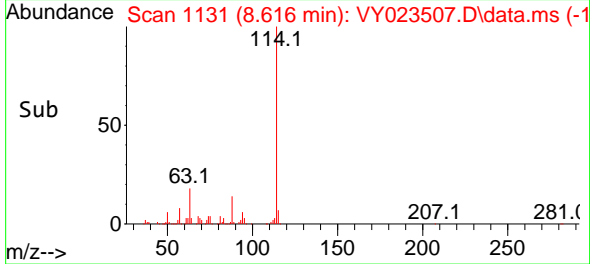
#34
 1,4-Difluorobenzene
 Concen: 50.000 ug/l
 RT: 8.616 min Scan# 1131
 Delta R.T. 0.000 min
 Lab File: VY023507.D
 Acq: 20 Oct 2025 14:36

Instrument :
 MSVOA_Y
 ClientSampleId :

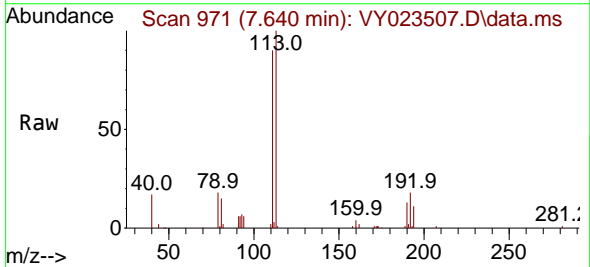


Tgt Ion:114 Resp: 117576

Ion	Ratio	Lower	Upper
114	100		
63	17.9	0.0	34.2
88	14.3	0.0	28.4

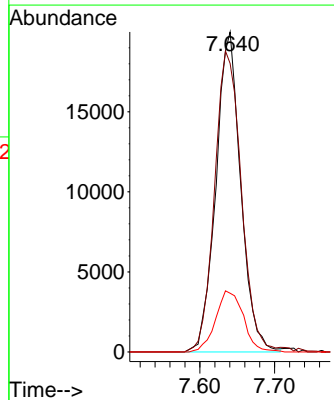
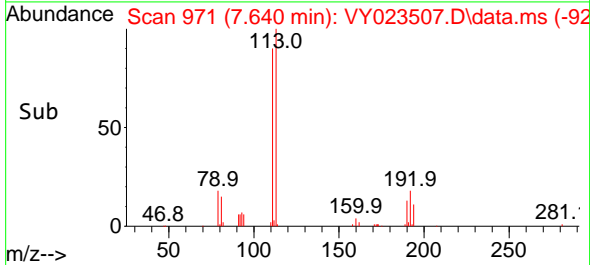


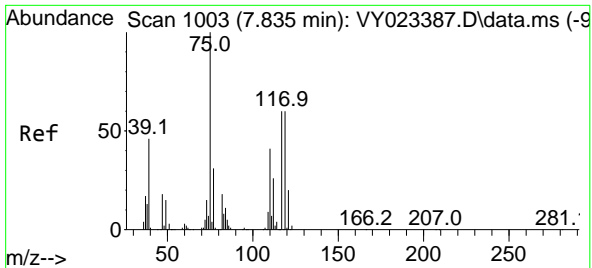
#35
 Dibromofluoromethane
 Concen: 63.895 ug/l
 RT: 7.640 min Scan# 971
 Delta R.T. 0.006 min
 Lab File: VY023507.D
 Acq: 20 Oct 2025 14:36



Tgt Ion:113 Resp: 46161

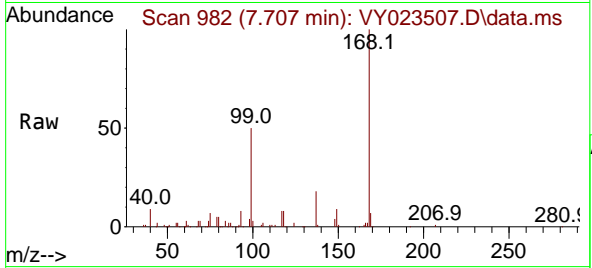
Ion	Ratio	Lower	Upper
113	100		
111	101.6	81.8	122.6
192	21.3	18.0	27.0



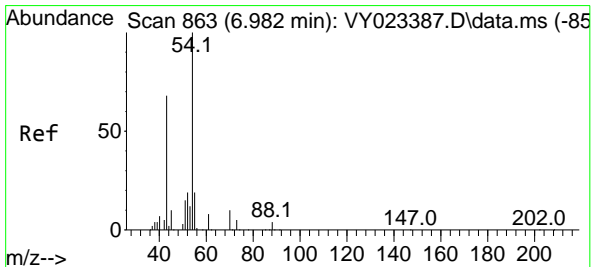
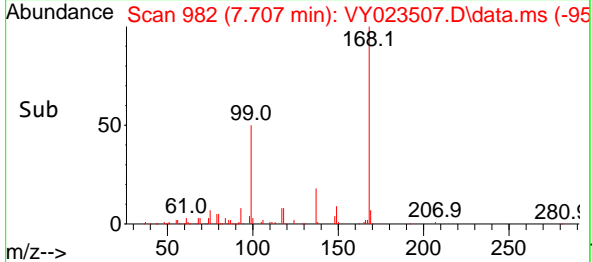
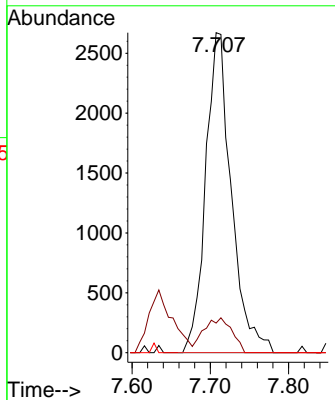


#36
 1,1-Dichloropropene
 Concen: 6.354 ug/l
 RT: 7.707 min Scan# 911
 Delta R.T. -0.128 min
 Lab File: VY023507.D
 Acq: 20 Oct 2025 14:36

Instrument : MSVOA_Y
 ClientSampleId :

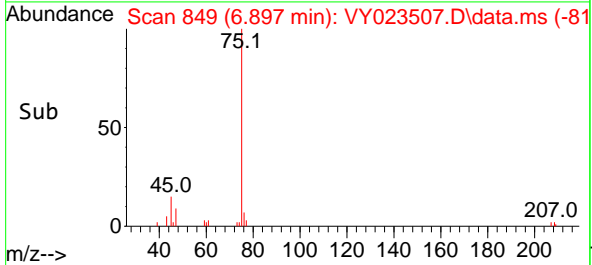
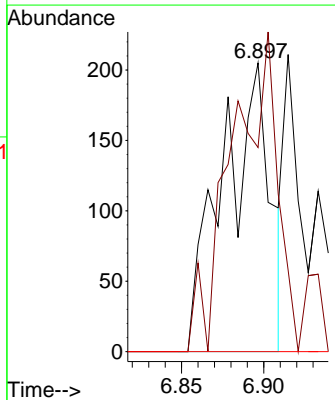
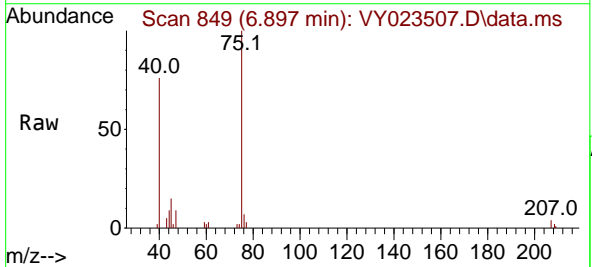


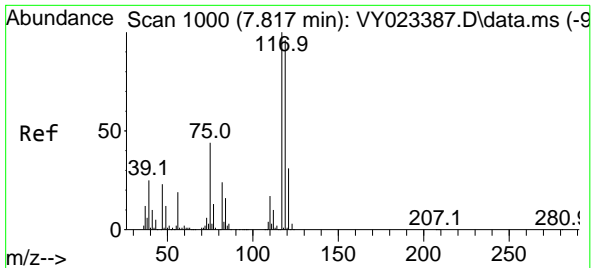
Tgt Ion	Resp	Ion Ratio	Lower	Upper
75	6077	100		
110		11.9	19.9	59.7#
77		0.0	25.0	37.6#



#37
 Ethyl Acetate
 Concen: 1.082 ug/l
 RT: 6.897 min Scan# 849
 Delta R.T. -0.085 min
 Lab File: VY023507.D
 Acq: 20 Oct 2025 14:36

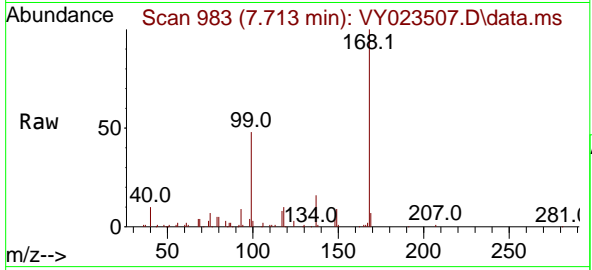
Tgt Ion	Resp	Ion Ratio	Lower	Upper
43	410	100		
61		106.3	11.8	17.8#
70		0.0	10.5	15.7#





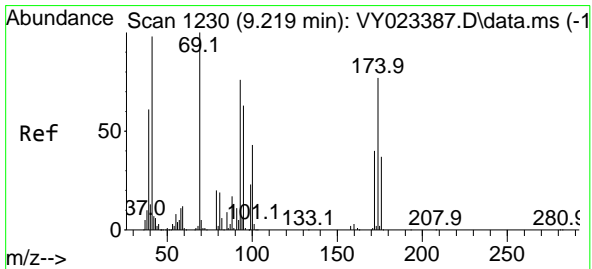
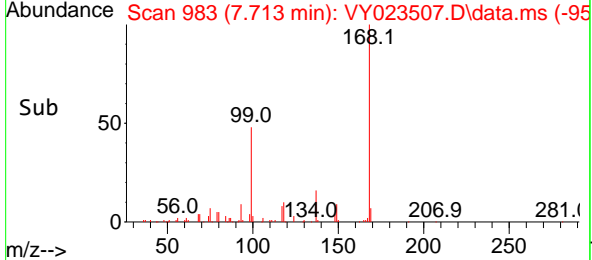
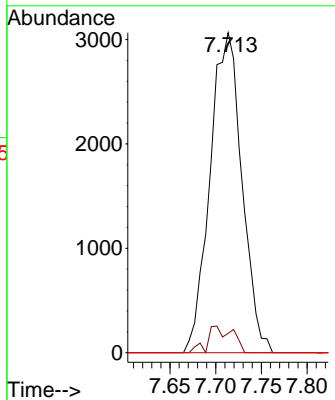
#38
 Carbon Tetrachloride
 Concen: 6.432 ug/l
 RT: 7.713 min Scan# 91
 Delta R.T. -0.104 min
 Lab File: VY023507.D
 Acq: 20 Oct 2025 14:36

Instrument :
 MSVOA_Y
 ClientSampleId :



Tgt Ion: 117 Resp: 7460

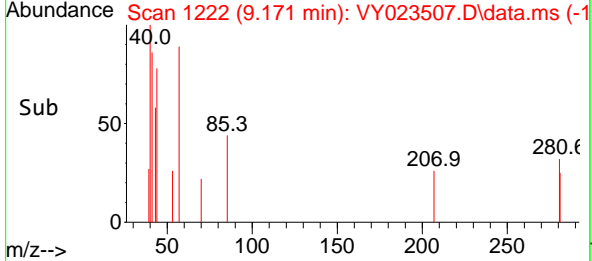
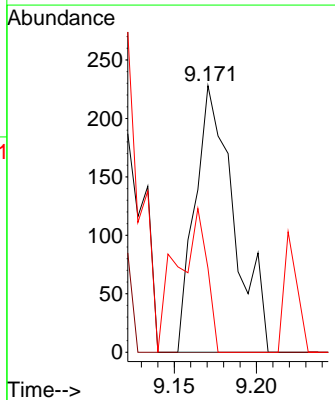
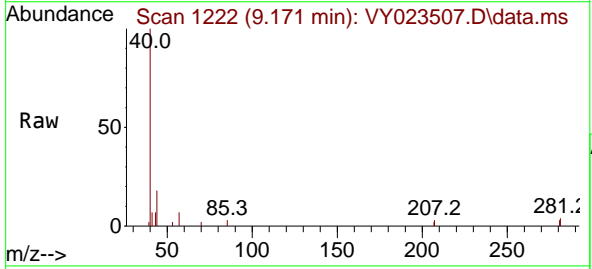
Ion	Ratio	Lower	Upper
117	100		
119	6.1	76.8	115.2#
121	0.0	24.5	36.7#

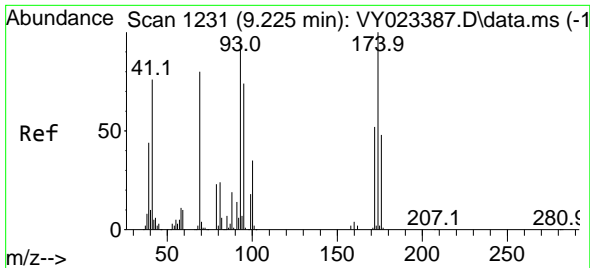


#48
 Methyl methacrylate
 Concen: 1.054 ug/l
 RT: 9.171 min Scan# 1222
 Delta R.T. -0.049 min
 Lab File: VY023507.D
 Acq: 20 Oct 2025 14:36

Tgt Ion: 41 Resp: 374

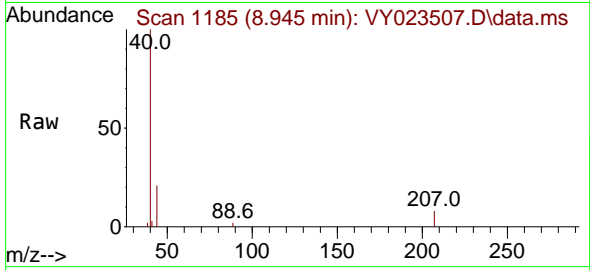
Ion	Ratio	Lower	Upper
41	100		
69	0.0	81.0	121.4#
39	41.2	48.2	72.4#



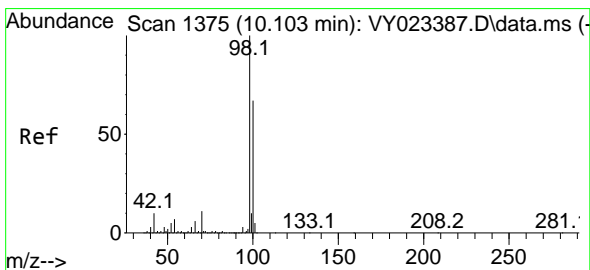
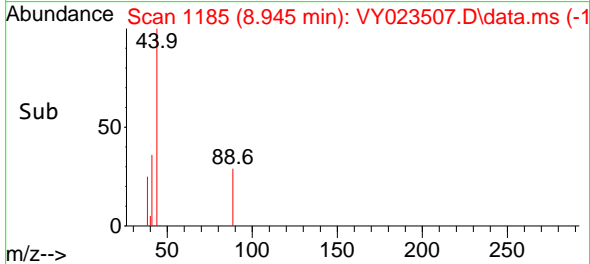
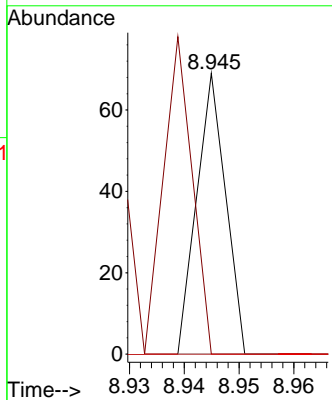


#49
 1,4-Dioxane
 Concen: 5.097 ug/l
 RT: 8.945 min Scan# 1185
 Delta R.T. -0.280 min
 Lab File: VY023507.D
 Acq: 20 Oct 2025 14:36

Instrument : MSVOA_Y
 ClientSampleId :

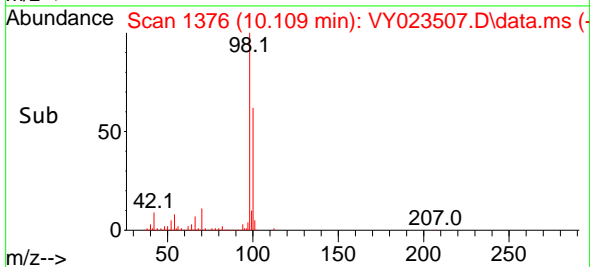
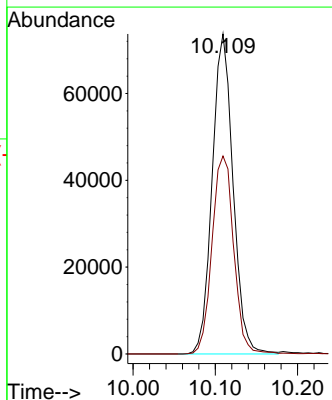
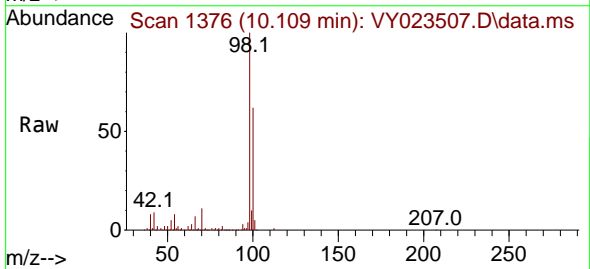


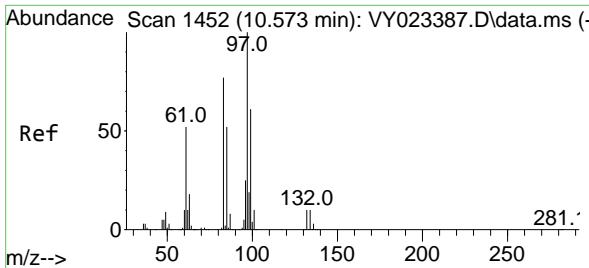
Tgt Ion: 88 Resp: 25
 Ion Ratio Lower Upper
 88 100
 43 0.0 21.8 32.8#
 58 0.0 46.8 70.2#



#50
 Toluene-d8
 Concen: 48.374 ug/l
 RT: 10.109 min Scan# 1376
 Delta R.T. 0.006 min
 Lab File: VY023507.D
 Acq: 20 Oct 2025 14:36

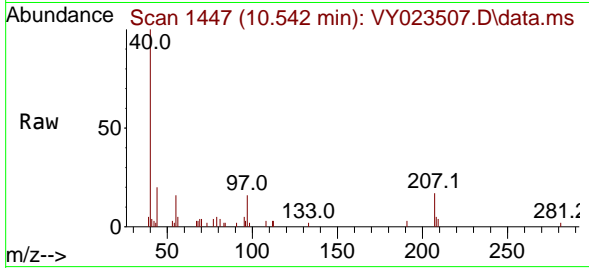
Tgt Ion: 98 Resp: 130149
 Ion Ratio Lower Upper
 98 100
 100 64.2 53.0 79.4



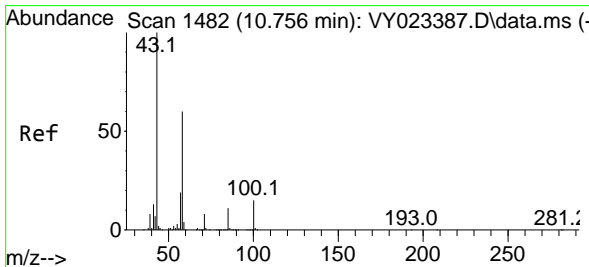
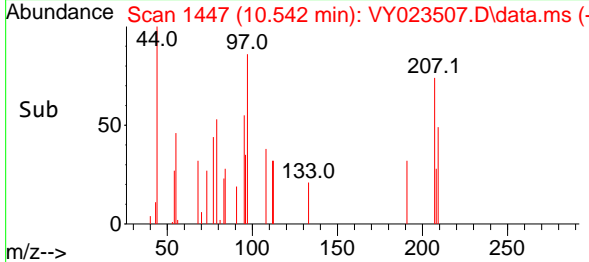
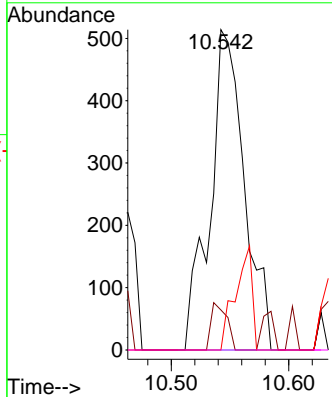


#55
 1,1,2-Trichloroethane
 Concen: 1.840 ug/l
 RT: 10.542 min Scan# 1447
 Delta R.T. -0.030 min
 Lab File: VY023507.D
 Acq: 20 Oct 2025 14:36

Instrument : MSVOA_Y
 ClientSampleId :

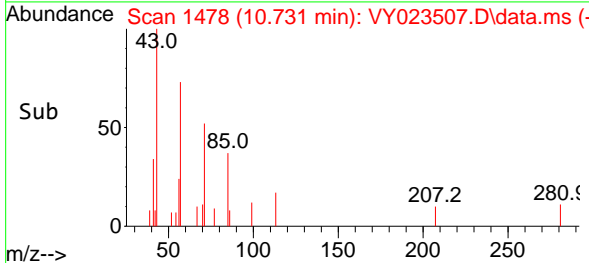
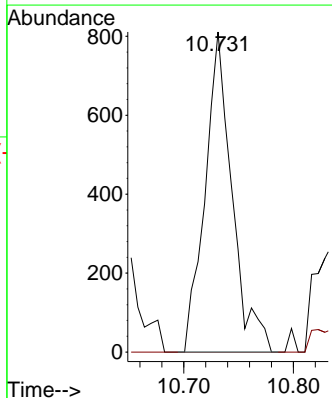
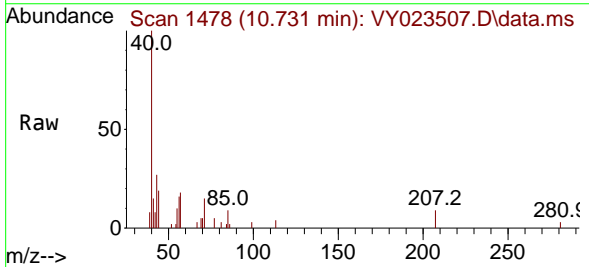


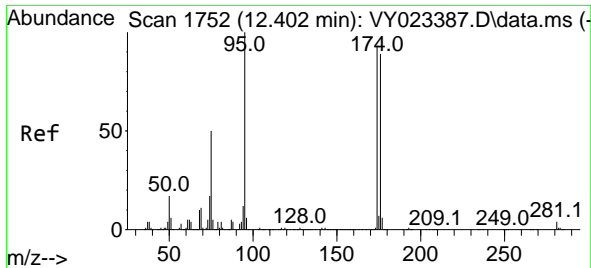
Tgt Ion	Resp	Lower	Upper
97	1047		
97	100		
83	12.5	61.8	92.6#
85	0.0	41.3	61.9#
99	0.0	48.7	73.1#



#59
 2-Hexanone
 Concen: 4.968 ug/l
 RT: 10.731 min Scan# 1478
 Delta R.T. -0.024 min
 Lab File: VY023507.D
 Acq: 20 Oct 2025 14:36

Tgt Ion	Resp	Lower	Upper
43	1386		
43	100		
58	0.0	30.5	91.5#

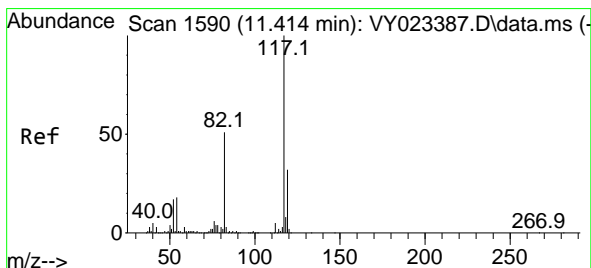
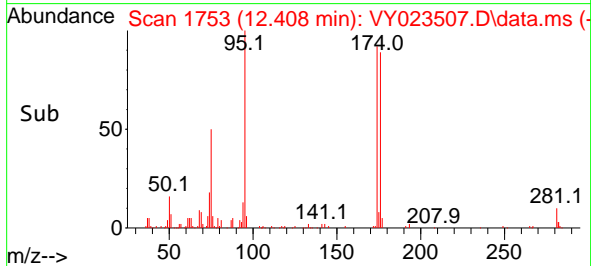
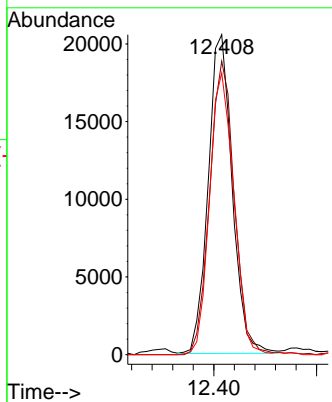
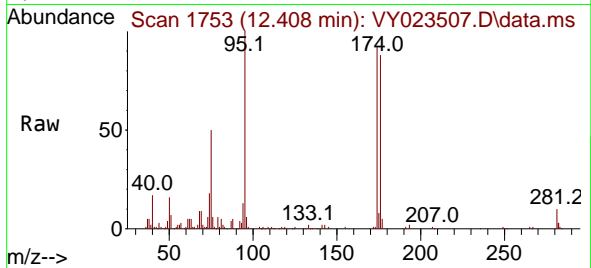




#62
 4-Bromofluorobenzene
 Concen: 37.487 ug/l
 RT: 12.408 min Scan# 11
 Delta R.T. 0.006 min
 Lab File: VY023507.D
 Acq: 20 Oct 2025 14:36

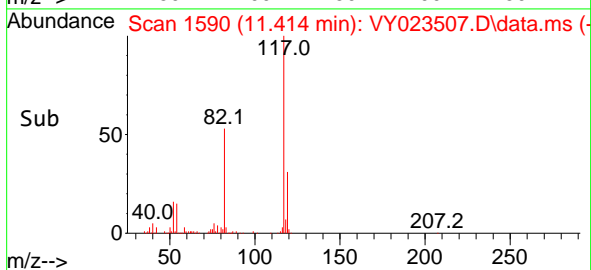
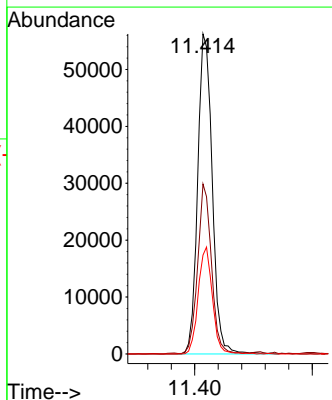
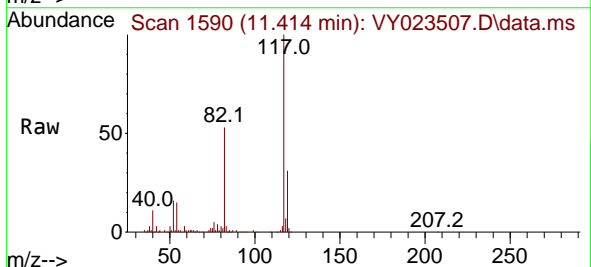
Instrument :
 MSVOA_Y
 ClientSampleId :

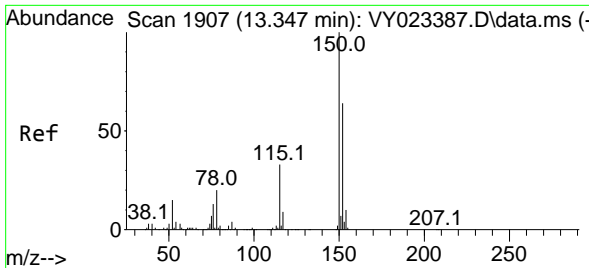
Tgt Ion	Resp	Lower	Upper
95	33298	100	
174	94.9	0.0	192.8
176	89.6	0.0	187.6



#63
 Chlorobenzene-d5
 Concen: 50.000 ug/l
 RT: 11.414 min Scan# 1590
 Delta R.T. 0.000 min
 Lab File: VY023507.D
 Acq: 20 Oct 2025 14:36

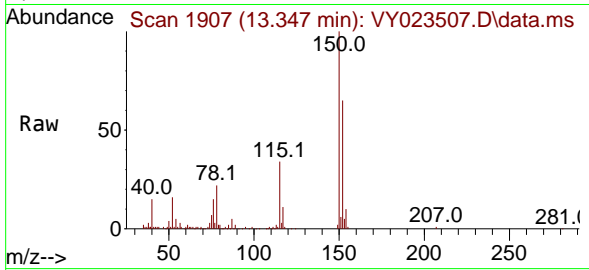
Tgt Ion	Resp	Lower	Upper
117	96488	100	
82	53.0	41.0	61.4
119	30.9	25.6	38.4





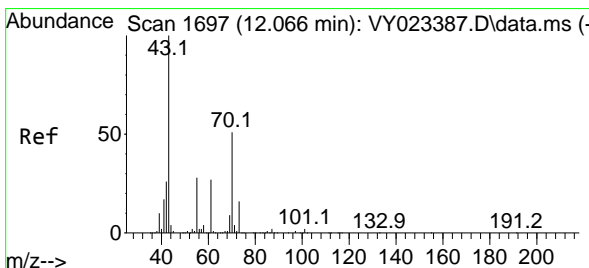
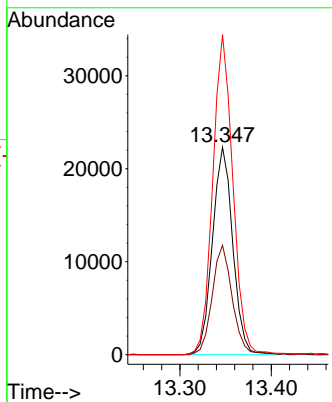
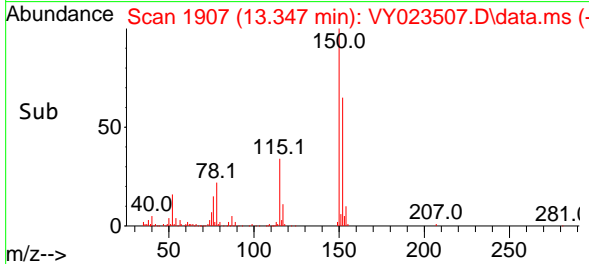
#72
 1,4-Dichlorobenzene-d4
 Concen: 50.000 ug/l
 RT: 13.347 min Scan# 1907
 Delta R.T. 0.000 min
 Lab File: VY023507.D
 Acq: 20 Oct 2025 14:36

Instrument : MSVOA_Y
 ClientSampleId :

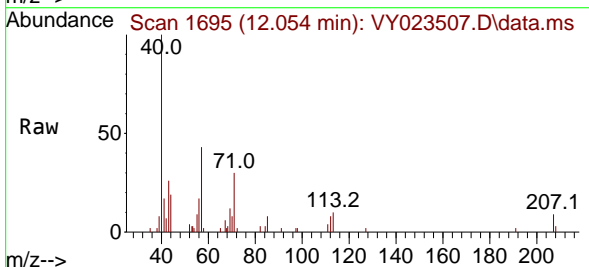


Tgt Ion:152 Resp: 34513

Ion	Ratio	Lower	Upper
152	100		
115	52.1	27.1	81.2
150	152.8	0.0	347.4

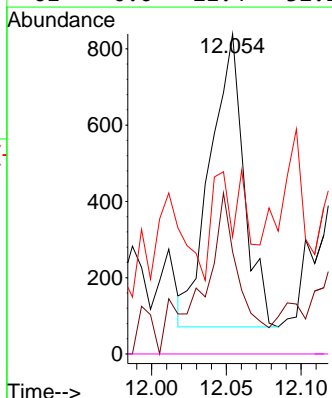
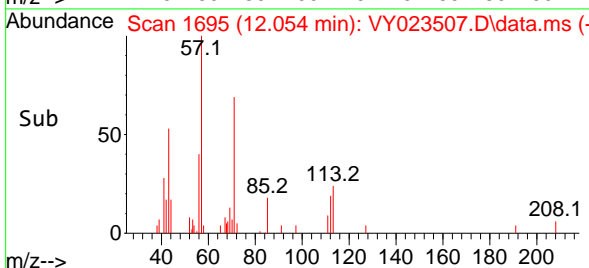


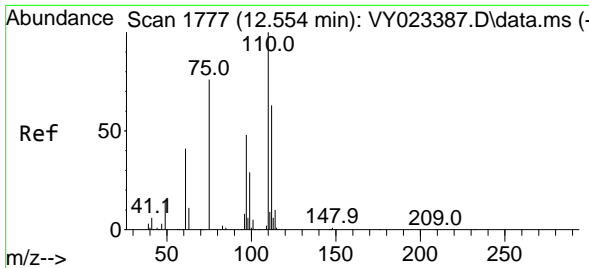
#74
 N-amy1 acetate
 Concen: 2.940 ug/l
 RT: 12.054 min Scan# 1695
 Delta R.T. -0.012 min
 Lab File: VY023507.D
 Acq: 20 Oct 2025 14:36



Tgt Ion: 43 Resp: 1201

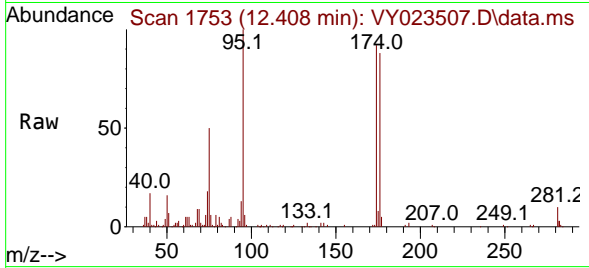
Ion	Ratio	Lower	Upper
43	100		
70	61.9	41.1	61.7#
55	34.9	23.0	34.6#
61	0.0	21.4	32.2#



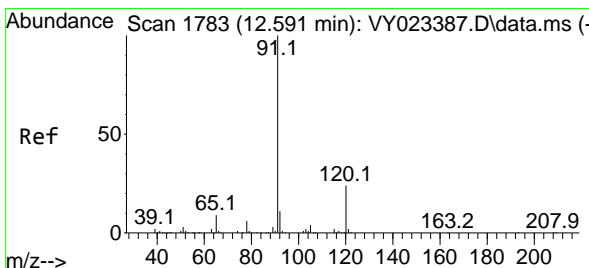
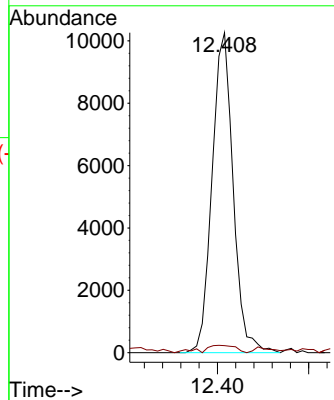
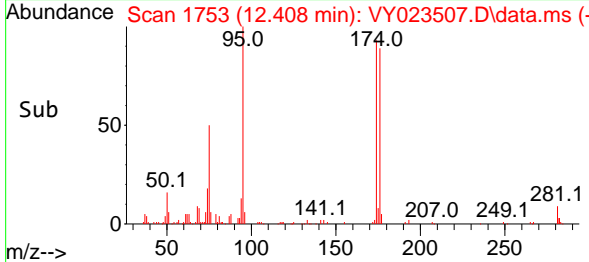


#76
 1,2,3-Trichloropropane
 Concen: 54.076 ug/l
 RT: 12.408 min Scan# 1753
 Delta R.T. -0.146 min
 Lab File: VY023507.D
 Acq: 20 Oct 2025 14:36

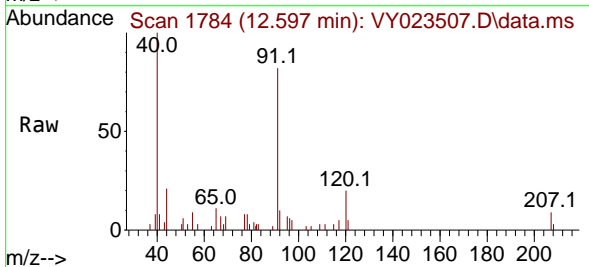
Instrument : MSVOA_Y
 ClientSampleId :



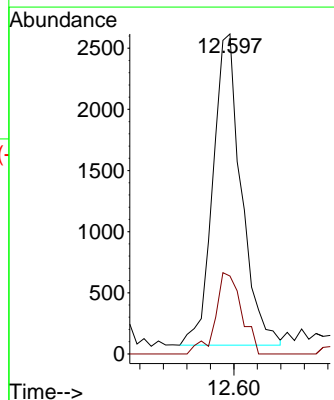
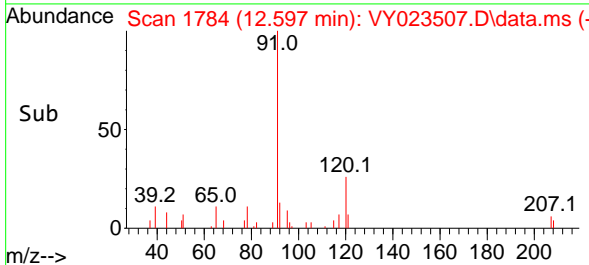
Tgt Ion: 75 Resp: 16466
 Ion Ratio Lower Upper
 75 100
 77 2.9 0.0 0.0#

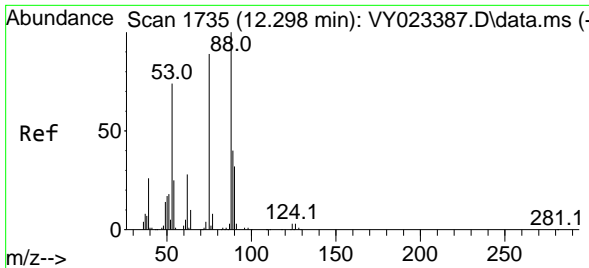


#78
 n-propylbenzene
 Concen: 1.627 ug/l
 RT: 12.597 min Scan# 1784
 Delta R.T. 0.006 min
 Lab File: VY023507.D
 Acq: 20 Oct 2025 14:36



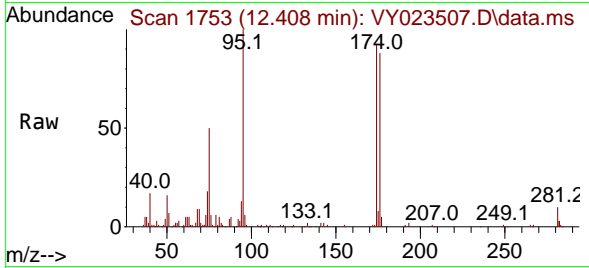
Tgt Ion: 91 Resp: 4281
 Ion Ratio Lower Upper
 91 100
 120 23.9 12.3 36.8



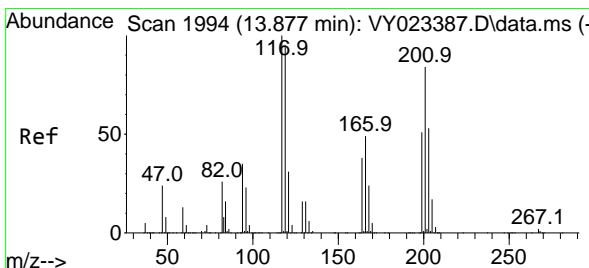
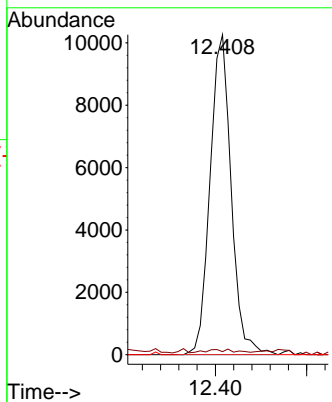
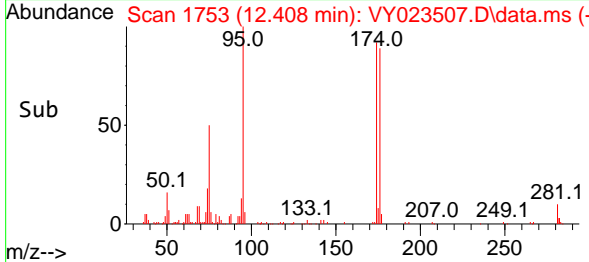


#81
 trans-1,4-Dichloro-2-butene
 Concen: 132.605 ug/l
 RT: 12.408 min Scan# 1753
 Delta R.T. 0.110 min
 Lab File: VY023507.D
 Acq: 20 Oct 2025 14:36

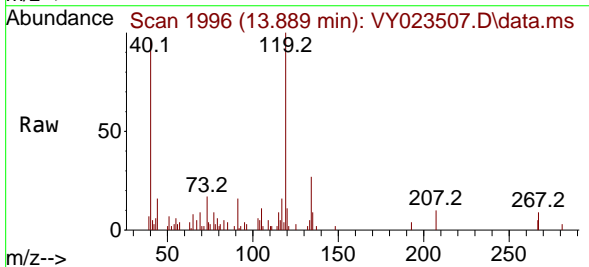
Instrument : MSVOA_Y
 ClientSampleId :



Tgt Ion: 75 Resp: 16466
 Ion Ratio Lower Upper
 75 100
 53 0.5 68.6 102.8#
 89 0.0 39.0 58.4#



#90
 Hexachloroethane
 Concen: 1.905 ug/l
 RT: 13.889 min Scan# 1996
 Delta R.T. 0.012 min
 Lab File: VY023507.D
 Acq: 20 Oct 2025 14:36



Tgt Ion:117 Resp: 849
 Ion Ratio Lower Upper
 117 100
 201 0.0 43.8 131.4#

