

Data Path : Z:\voasrv\HPCHEM1\MSVOA\_Y\Data\VY102422\  
 Data File : VY011064.D  
 Acq On : 24 Oct 2022 13:20  
 Operator : KP/MD  
 Sample : N5217-15RE  
 Misc : 5.08g/5.0mL/MSVOA\_Y/SOIL  
 ALS Vial : 8 Sample Multiplier: 1

Instrument :  
 MSVOA\_Y  
 ClientSampleId :  
 SB-K1-3.5-4.0RE

Quant Time: Oct 25 05:29:13 2022  
 Quant Method : Z:\voasrv\HPCHEM1\MSVOA\_Y\methods\82Y101722S.M  
 Quant Title : SW846 8260  
 QLast Update : Tue Oct 18 01:42:42 2022  
 Response via : Initial Calibration

Compound	R.T.	QIon	Response	Conc	Units	Dev(Min)
Internal Standards						
1) Pentafluorobenzene	7.789	168	216422	50.000	ug/l	0.00
34) 1,4-Difluorobenzene	8.685	114	368213	50.000	ug/l	0.00
63) Chlorobenzene-d5	11.489	117	320828	50.000	ug/l	0.00
72) 1,4-Dichlorobenzene-d4	13.422	152	133863	50.000	ug/l	0.00
System Monitoring Compounds						
33) 1,2-Dichloroethane-d4	8.136	65	140551	70.502	ug/l	0.00
Spiked Amount	50.000	Range	50 - 163	Recovery	=	141.000%
35) Dibromofluoromethane	7.716	113	145432	71.795	ug/l	0.00
Spiked Amount	50.000	Range	54 - 147	Recovery	=	143.580%
50) Toluene-d8	10.179	98	489013	63.605	ug/l	0.00
Spiked Amount	50.000	Range	49 - 140	Recovery	=	127.200%
62) 4-Bromofluorobenzene	12.477	95	158675	58.804	ug/l	0.00
Spiked Amount	50.000	Range	25 - 144	Recovery	=	117.600%

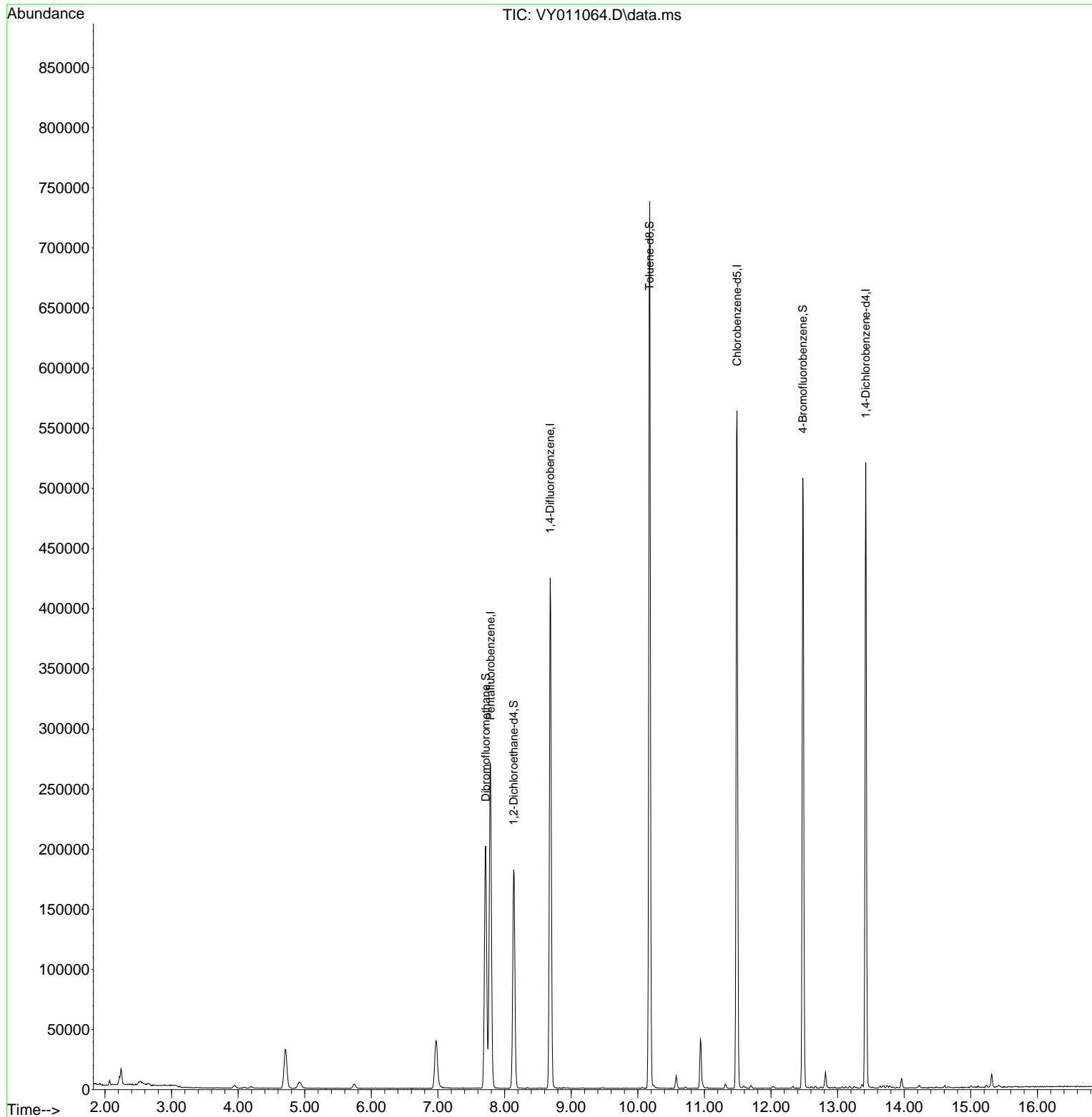
Target Compounds Qvalue

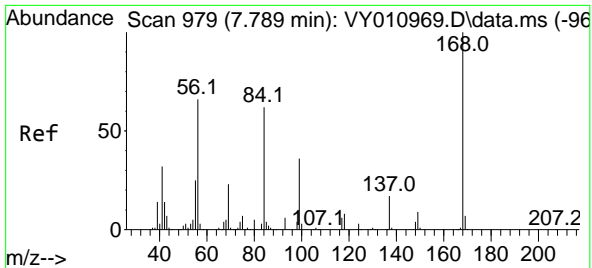
(#) = qualifier out of range (m) = manual integration (+) = signals summed

Data Path : Z:\voasrv\HPCHEM1\MSVOA\_Y\Data\VY102422\  
 Data File : VY011064.D  
 Acq On : 24 Oct 2022 13:20  
 Operator : KP/MD  
 Sample : N5217-15RE  
 Misc : 5.08g/5.0mL/MSVOA\_Y/SOIL  
 ALS Vial : 8 Sample Multiplier: 1

Instrument :  
 MSVOA\_Y  
 ClientSampleId :  
 SB-K1-3.5-4.0RE

Quant Time: Oct 25 05:29:13 2022  
 Quant Method : Z:\voasrv\HPCHEM1\MSVOA\_Y\methods\82Y101722S.M  
 Quant Title : SW846 8260  
 QLast Update : Tue Oct 18 01:42:42 2022  
 Response via : Initial Calibration

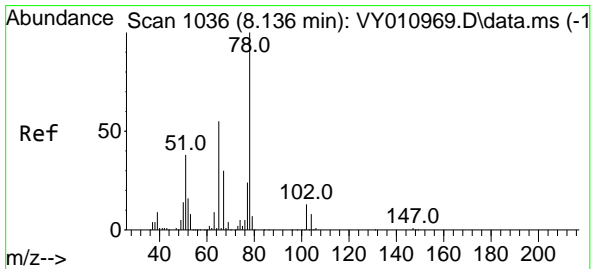
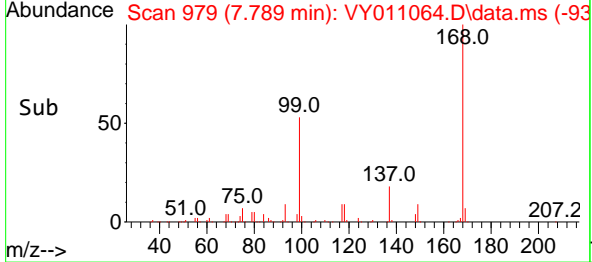
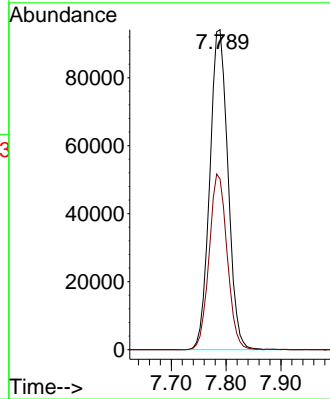
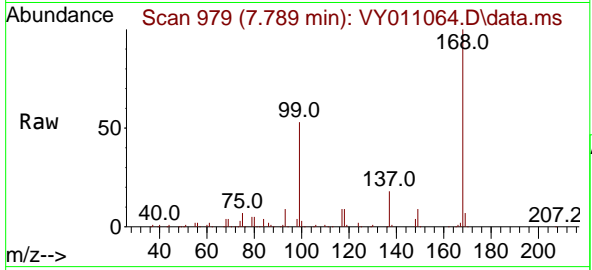




#1  
 Pentafluorobenzene  
 Concen: 50.000 ug/l  
 RT: 7.789 min Scan# 91  
 Delta R.T. -0.000 min  
 Lab File: VY011064.D  
 Acq: 24 Oct 2022 13:20

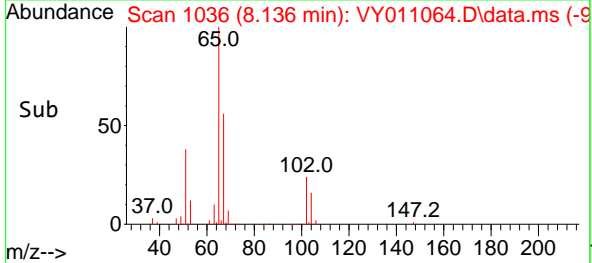
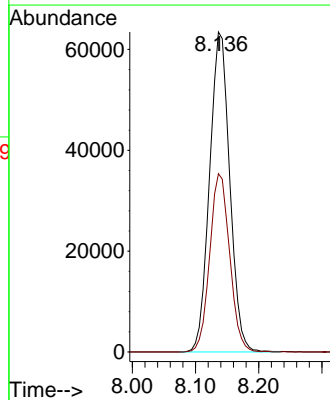
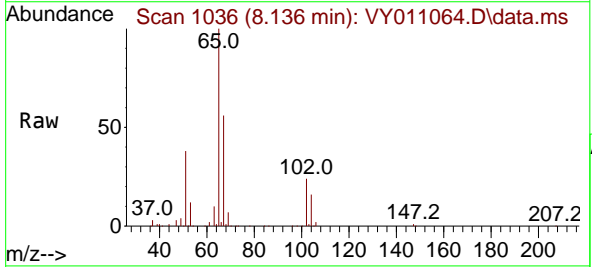
Instrument : MSVOA\_Y  
 ClientSampleId : SB-K1-3.5-4.0RE

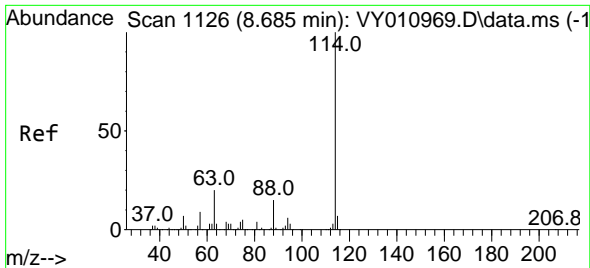
Tgt Ion:168 Resp: 216422  
 Ion Ratio Lower Upper  
 168 100  
 99 53.4 46.9 70.3



#33  
 1,2-Dichloroethane-d4  
 Concen: 70.502 ug/l  
 RT: 8.136 min Scan# 1036  
 Delta R.T. 0.000 min  
 Lab File: VY011064.D  
 Acq: 24 Oct 2022 13:20

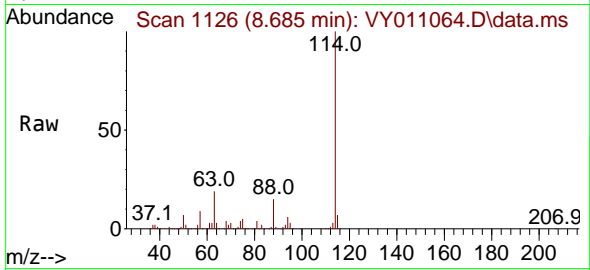
Tgt Ion: 65 Resp: 140551  
 Ion Ratio Lower Upper  
 65 100  
 67 55.1 0.0 99.4



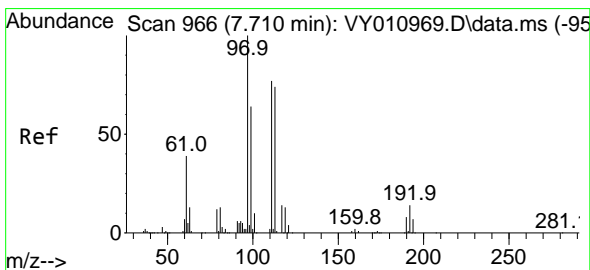
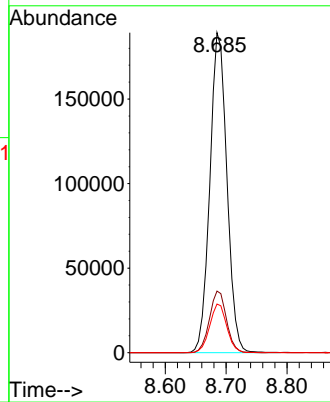
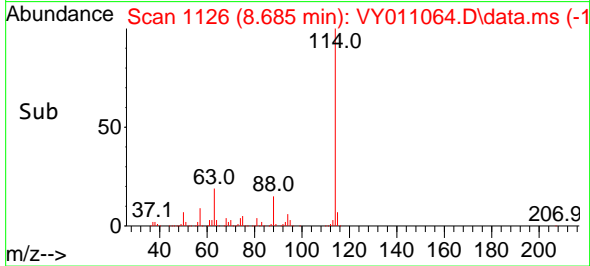


#34  
 1,4-Difluorobenzene  
 Concen: 50.000 ug/l  
 RT: 8.685 min Scan# 1114  
 Delta R.T. -0.000 min  
 Lab File: VY011064.D  
 Acq: 24 Oct 2022 13:20

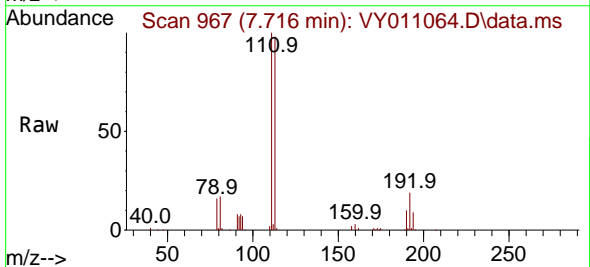
Instrument :  
 MSVOA\_Y  
 ClientSampleId :  
 SB-K1-3.5-4.0RE



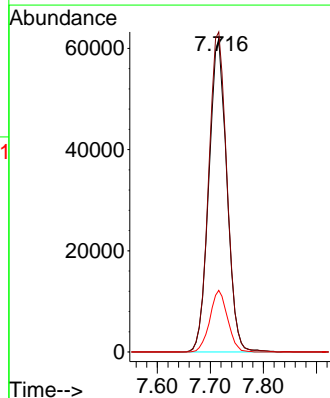
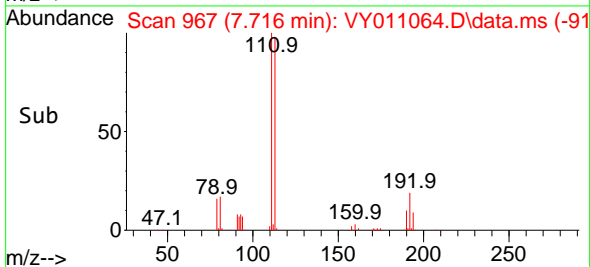
Tgt Ion:114 Resp: 368213  
 Ion Ratio Lower Upper  
 114 100  
 63 19.3 0.0 43.2  
 88 15.2 0.0 31.8

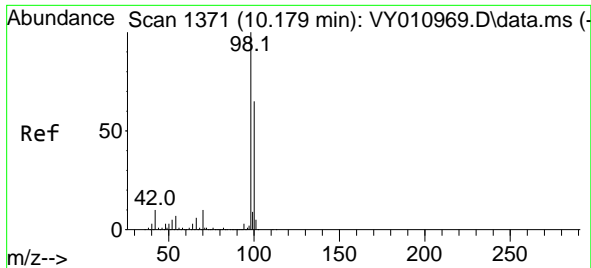


#35  
 Dibromofluoromethane  
 Concen: 71.795 ug/l  
 RT: 7.716 min Scan# 967  
 Delta R.T. 0.006 min  
 Lab File: VY011064.D  
 Acq: 24 Oct 2022 13:20



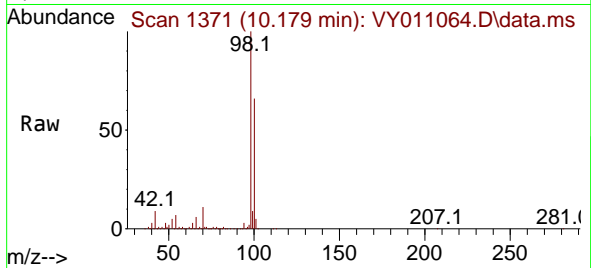
Tgt Ion:113 Resp: 145432  
 Ion Ratio Lower Upper  
 113 100  
 111 103.6 82.6 124.0  
 192 19.4 17.6 26.4



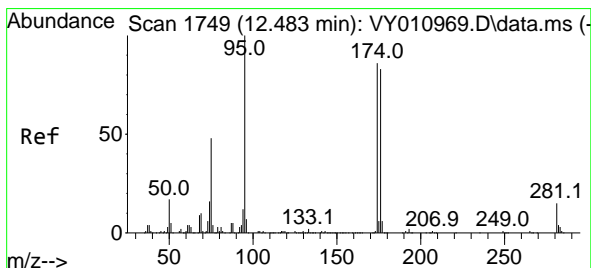
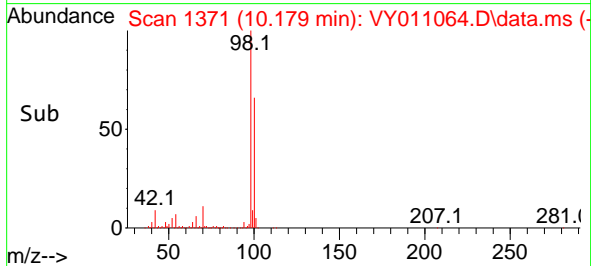
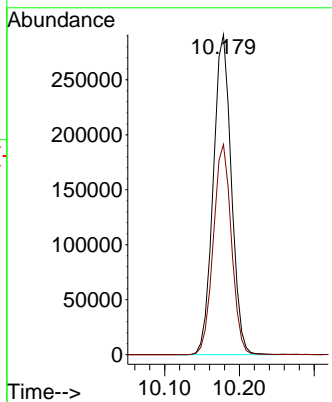


#50  
 Toluene-d8  
 Concen: 63.605 ug/l  
 RT: 10.179 min Scan# 1371  
 Delta R.T. -0.000 min  
 Lab File: VY011064.D  
 Acq: 24 Oct 2022 13:20

Instrument : MSVOA\_Y  
 ClientSampleId : SB-K1-3.5-4.0RE

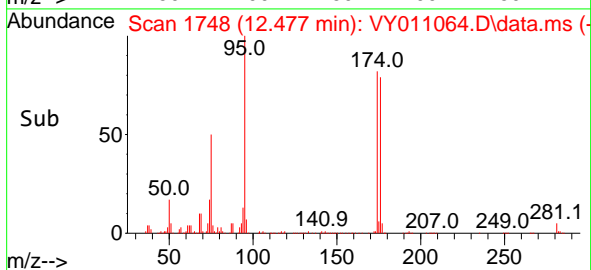
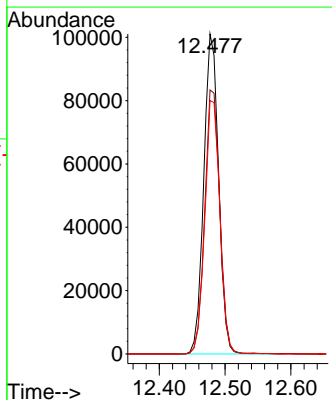
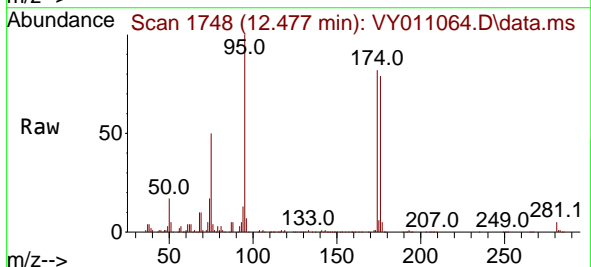


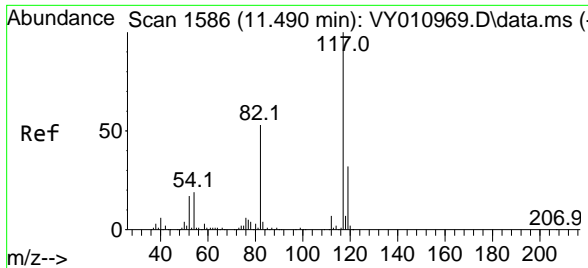
Tgt Ion: 98 Resp: 489013  
 Ion Ratio Lower Upper  
 98 100  
 100 65.8 50.2 75.2



#62  
 4-Bromofluorobenzene  
 Concen: 58.804 ug/l  
 RT: 12.477 min Scan# 1748  
 Delta R.T. -0.006 min  
 Lab File: VY011064.D  
 Acq: 24 Oct 2022 13:20

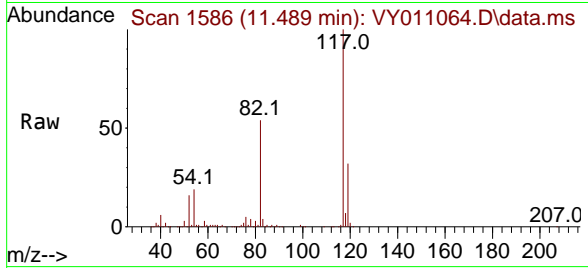
Tgt Ion: 95 Resp: 158675  
 Ion Ratio Lower Upper  
 95 100  
 174 84.0 0.0 177.0  
 176 80.3 0.0 175.8





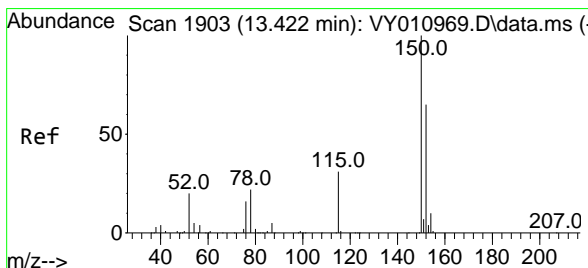
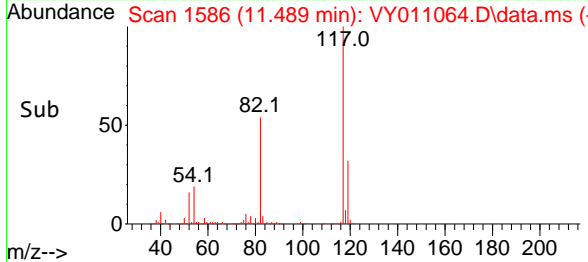
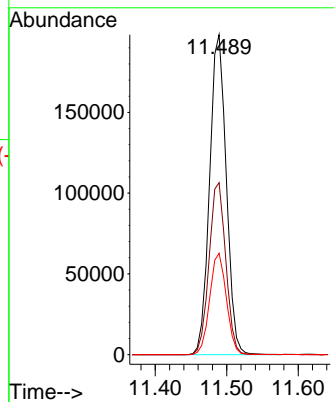
#63  
 Chlorobenzene-d5  
 Concen: 50.000 ug/l  
 RT: 11.489 min Scan# 11  
 Delta R.T. -0.001 min  
 Lab File: VY011064.D  
 Acq: 24 Oct 2022 13:20

Instrument : MSVOA\_Y  
 ClientSampleId : SB-K1-3.5-4.0RE

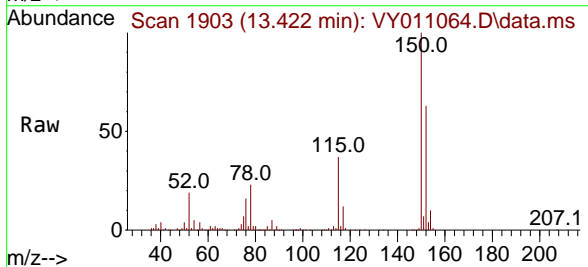


Tgt Ion:117 Resp: 320828

Ion	Ratio	Lower	Upper
117	100		
82	53.8	43.0	64.4
119	31.7	25.4	38.0



#72  
 1,4-Dichlorobenzene-d4  
 Concen: 50.000 ug/l  
 RT: 13.422 min Scan# 1903  
 Delta R.T. -0.000 min  
 Lab File: VY011064.D  
 Acq: 24 Oct 2022 13:20



Tgt Ion:152 Resp: 133863

Ion	Ratio	Lower	Upper
152	100		
115	58.8	28.2	84.7
150	158.7	0.0	347.6

