

Data Path : Z:\voasrv\HPCHEM1\MSVOA_Y\Data\VY102824\
 Data File : VY020039.D
 Acq On : 28 Oct 2024 15:15
 Operator : SY/MD
 Sample : P4574-01
 Misc : 5.01g/5.0mL/MSVOA_Y/SOIL/A
 ALS Vial : 13 Sample Multiplier: 1

Instrument :
 MSVOA_Y
 ClientSampleId :
 GRAVEL-1

Integration Parameters: RTEINT.P

Integrator: RTE
 Smoothing : ON Filtering: 5
 Sampling : 1 Min Area: 3 % of largest Peak
 Start Thrs: 0.2 Max Peaks: 100
 Stop Thrs : 0 Peak Location: TOP

If leading or trailing edge < 100 prefer < Baseline drop else tangent >
 Peak separation: 5

Method : Z:\voasrv\HPCHEM1\MSVOA_Y\methods\82Y100924S.M
 Title : SW846 8260

Signal : TIC: VY020039.D\data.ms

peak #	R.T. min	first scan	max scan	last scan	PK TY	peak height	corr. area	corr. % max.	% of total
1	6.884	837	847	860	rBV	6055	20798	2.13%	0.433%
2	7.634	960	970	976	rBV	129173	318186	32.63%	6.623%
3	7.707	976	982	997	rVB	198362	465811	47.77%	9.695%
4	8.061	1030	1040	1052	rBV	120422	274301	28.13%	5.709%
5	8.616	1122	1131	1145	rBV	358034	721180	73.96%	15.010%
6	10.109	1365	1376	1385	rBV	560657	975152	100.00%	20.296%
7	10.512	1435	1442	1450	rVB2	8658	16333	1.67%	0.340%
8	10.878	1497	1502	1509	rBV5	7689	13866	1.42%	0.289%
9	11.414	1583	1590	1604	rBV	517509	847994	86.96%	17.650%
10	12.408	1745	1753	1763	rBV	348437	549215	56.32%	11.431%
11	13.347	1900	1907	1917	rVB	392791	601755	61.71%	12.525%

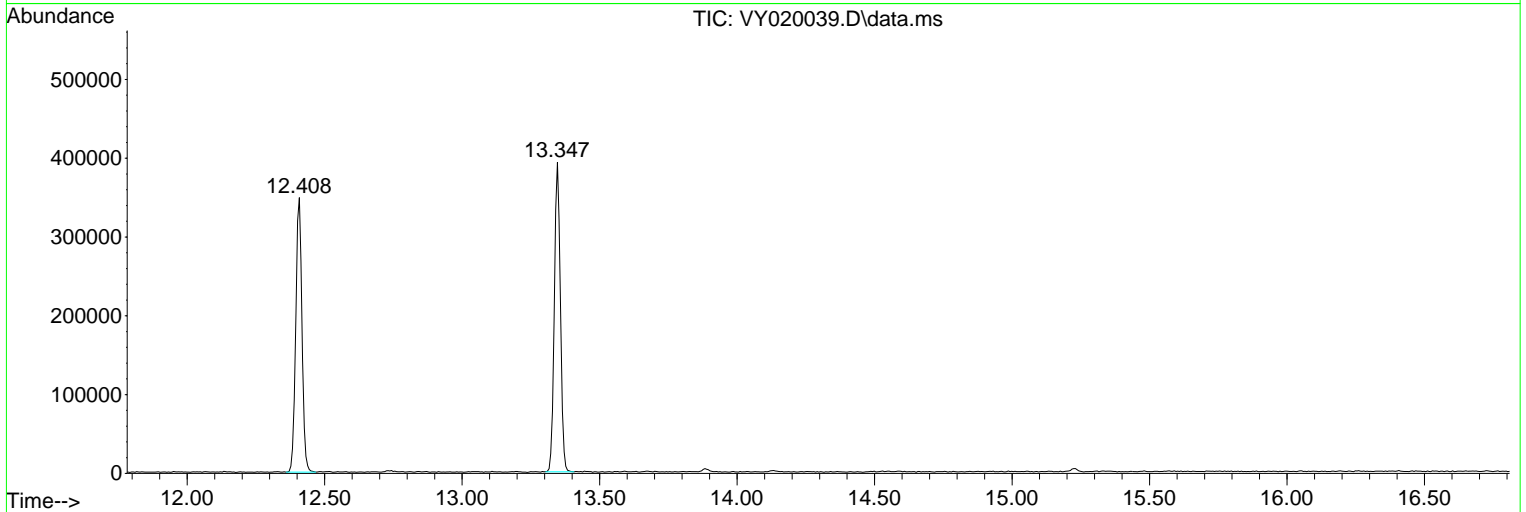
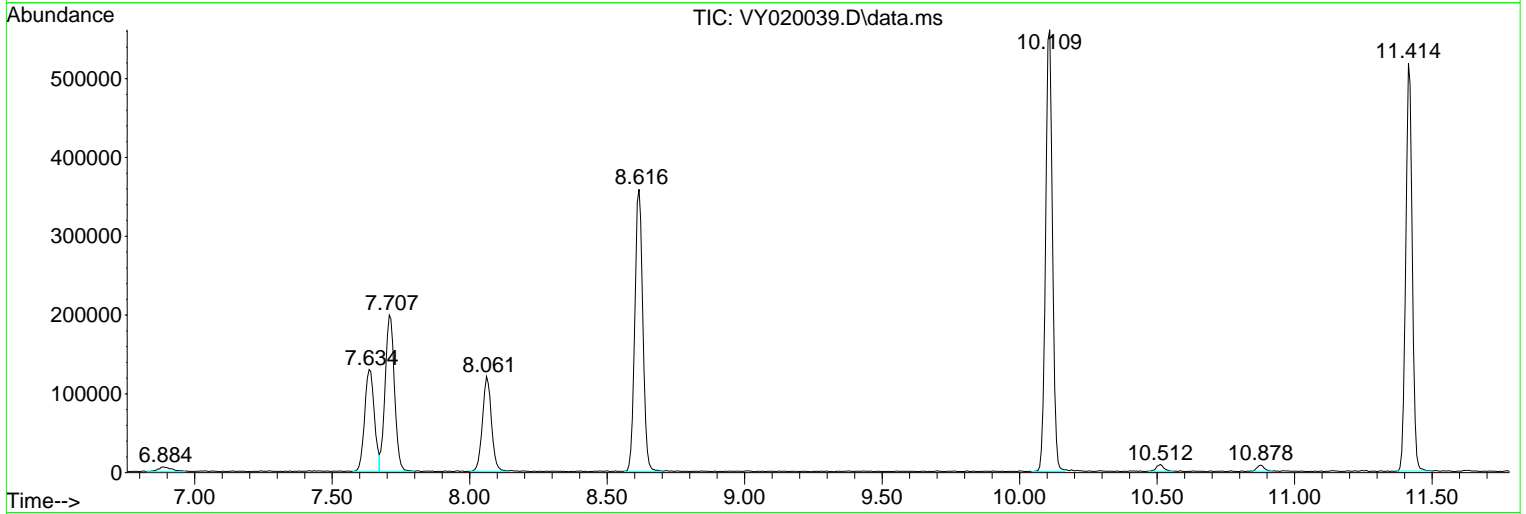
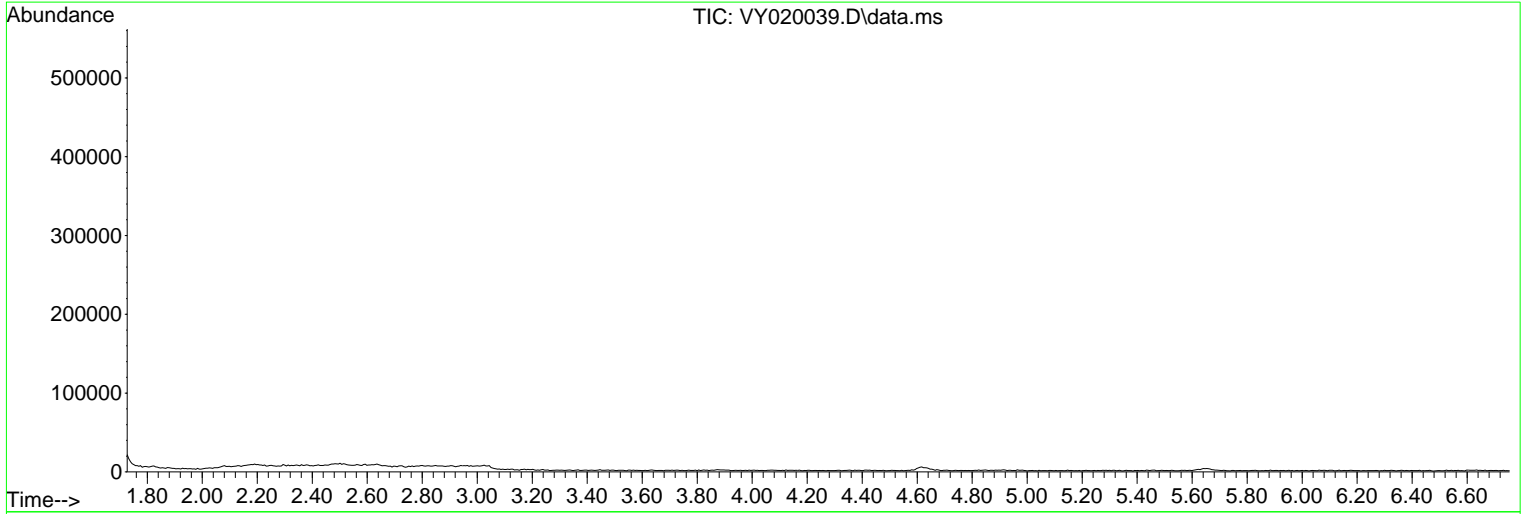
Sum of corrected areas: 4804591

Data Path : Z:\voasrv\HPCHEM1\MSVOA_Y\Data\VY102824\
 Data File : VY020039.D
 Acq On : 28 Oct 2024 15:15
 Operator : SY/MD
 Sample : P4574-01
 Misc : 5.01g/5.0mL/MSVOA_Y/SOIL/A
 ALS Vial : 13 Sample Multiplier: 1

Instrument :
 MSVOA_Y
 ClientSampleId :
 GRAVEL-1

Quant Method : Z:\voasrv\HPCHEM1\MSVOA_Y\methods\82Y100924S.M
 Quant Title : SW846 8260

TIC Library : C:\Database\NIST20.L
 TIC Integration Parameters: LSCINT.P



Library Search Compound Report

Data Path : Z:\voasrv\HPCHEM1\MSVOA_Y\Data\VY102824\
Data File : VY020039.D
Acq On : 28 Oct 2024 15:15
Operator : SY/MD
Sample : P4574-01
Misc : 5.01g/5.0mL/MSVOA_Y/SOIL/A
ALS Vial : 13 Sample Multiplier: 1

Instrument :
MSVOA_Y
ClientSampleId :
GRAVEL-1

Quant Method : Z:\voasrv\HPCHEM1\MSVOA_Y\methods\82Y100924S.M
Quant Title : SW846 8260

TIC Library : C:\Database\NIST20.L
TIC Integration Parameters: LSCINT.P

No Library Search Compounds Detected

Data Path : Z:\voasrv\HPCHEM1\MSVOA_Y\Data\VY102824\
Data File : VY020039.D
Acq On : 28 Oct 2024 15:15
Operator : SY/MD
Sample : P4574-01
Misc : 5.01g/5.0mL/MSVOA_Y/SOIL/A
ALS Vial : 13 Sample Multiplier: 1

Instrument :
MSVOA_Y
ClientSampleId :
GRAVEL-1

Quant Method : Z:\voasrv\HPCHEM1\MSVOA_Y\methods\82Y100924S.M
Quant Title : SW846 8260

TIC Library : C:\Database\NIST0.L
TIC Integration Parameters: LSCINT.P

TIC Top Hit name	RT	EstConc	Units	Response	#	RT	Resp	Conc
------------------	----	---------	-------	----------	---	----	------	------
