

Data Path : Z:\voasrv\HPCHEM1\MSVOA\_Y\Data\VY110325\  
 Data File : VY023648.D  
 Acq On : 03 Nov 2025 10:38  
 Operator : SY/MD  
 Sample : VY1103SBL01  
 Misc : 5.00g/5.0mL/MSVOA\_Y/SOIL  
 ALS Vial : 3 Sample Multiplier: 1

Instrument :  
 MSVOA\_Y  
 ClientSampleId :

Quant Time: Nov 04 01:29:30 2025  
 Quant Method : Z:\voasrv\HPCHEM1\MSVOA\_Y\methods\82Y100725S.M  
 Quant Title : SW846 8260  
 QLast Update : Wed Oct 08 05:12:50 2025  
 Response via : Initial Calibration

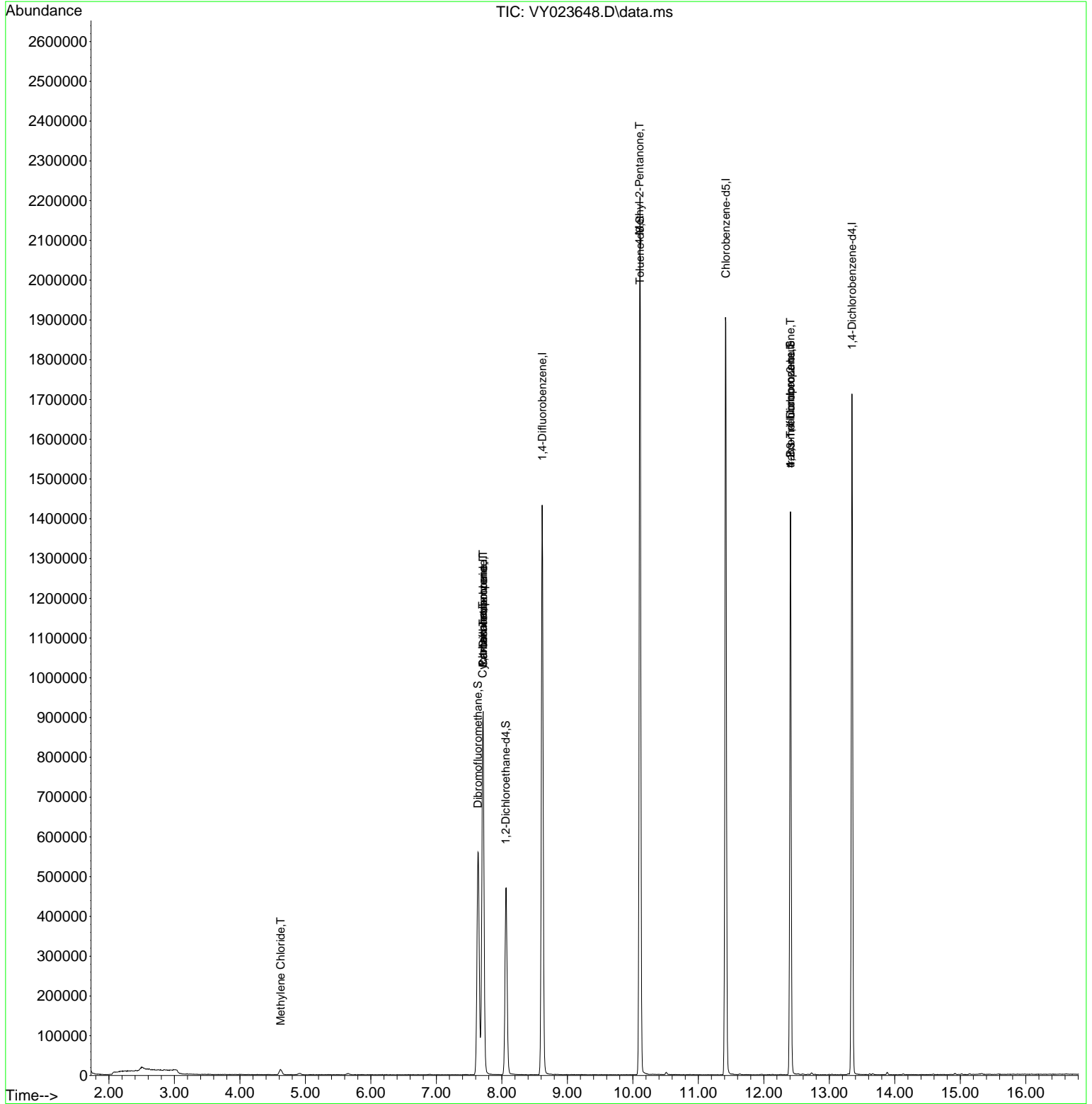
Compound	R.T.	QIon	Response	Conc	Units	Dev(Min)
-----						
Internal Standards						
1) Pentafluorobenzene	7.713	168	759655	50.000	ug/l	0.00
34) 1,4-Difluorobenzene	8.616	114	1277366	50.000	ug/l	0.00
63) Chlorobenzene-d5	11.420	117	1087348	50.000	ug/l	0.00
72) 1,4-Dichlorobenzene-d4	13.347	152	440158	50.000	ug/l	0.00
System Monitoring Compounds						
33) 1,2-Dichloroethane-d4	8.061	65	370500	58.325	ug/l	0.00
Spiked Amount	50.000	Range	50 - 163	Recovery	=	116.640%
35) Dibromofluoromethane	7.634	113	405302	51.639	ug/l	0.00
Spiked Amount	50.000	Range	54 - 147	Recovery	=	103.280%
50) Toluene-d8	10.109	98	1446129	49.475	ug/l	0.00
Spiked Amount	50.000	Range	58 - 134	Recovery	=	98.940%
62) 4-Bromofluorobenzene	12.408	95	416804	43.191	ug/l	0.00
Spiked Amount	50.000	Range	30 - 143	Recovery	=	86.380%
Target Compounds						
					Qvalue	
20) Methylene Chloride	4.623	84	10613	1.298	ug/l #	86
31) Cyclohexane	7.707	56	12893	1.220	ug/l #	9
36) 1,1-Dichloropropene	7.713	75	49360	4.750	ug/l #	47
38) Carbon Tetrachloride	7.713	117	70796	5.619	ug/l #	16
51) 4-Methyl-2-Pentanone	10.103	43	5047	1.190	ug/l #	1
76) 1,2,3-Trichloropropane	12.408	75	205663	52.960	ug/l #	100
81) trans-1,4-Dichloro-2-b...	12.408	75	205663	129.868	ug/l #	15

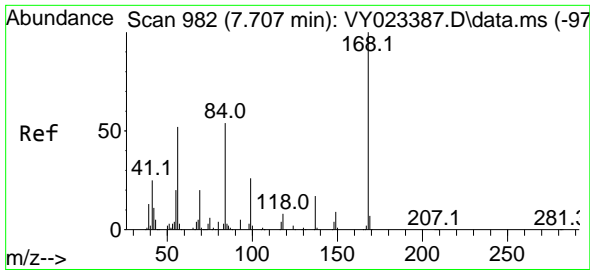
(#) = qualifier out of range (m) = manual integration (+) = signals summed

Data Path : Z:\voasrv\HPCHEM1\MSVOA\_Y\Data\VY110325\  
 Data File : VY023648.D  
 Acq On : 03 Nov 2025 10:38  
 Operator : SY/MD  
 Sample : VY1103SBL01  
 Misc : 5.00g/5.0mL/MSVOA\_Y/SOIL  
 ALS Vial : 3 Sample Multiplier: 1

Instrument :  
 MSVOA\_Y  
 ClientSampleId :

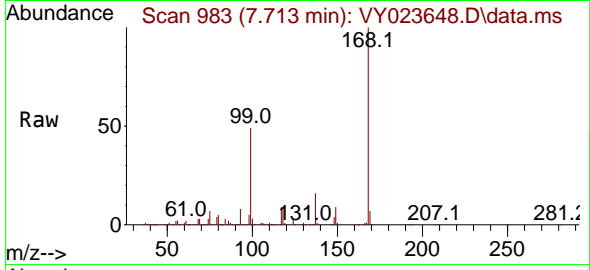
Quant Time: Nov 04 01:29:30 2025  
 Quant Method : Z:\voasrv\HPCHEM1\MSVOA\_Y\methods\82Y100725S.M  
 Quant Title : SW846 8260  
 QLast Update : Wed Oct 08 05:12:50 2025  
 Response via : Initial Calibration



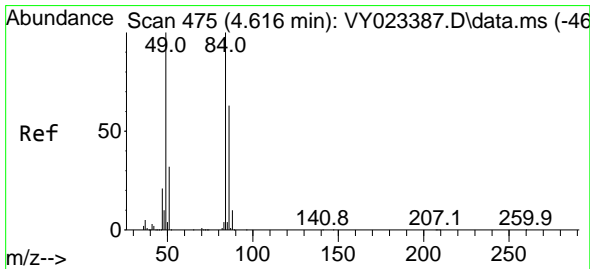
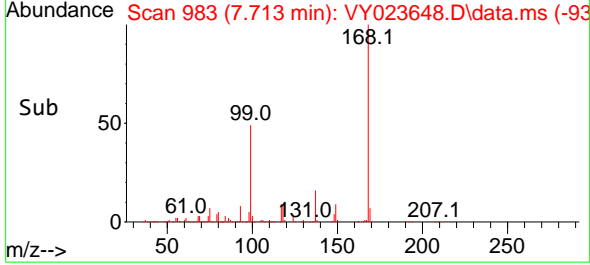
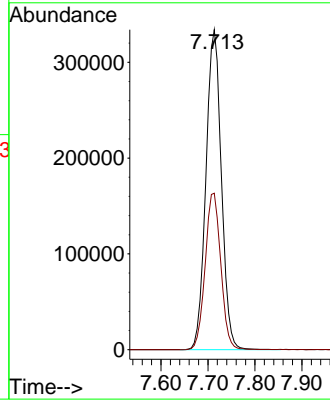


#1  
 Pentafluorobenzene  
 Concen: 50.000 ug/l  
 RT: 7.713 min Scan# 91  
 Delta R.T. 0.006 min  
 Lab File: VY023648.D  
 Acq: 03 Nov 2025 10:38

Instrument :  
 MSVOA\_Y  
 ClientSampleId :

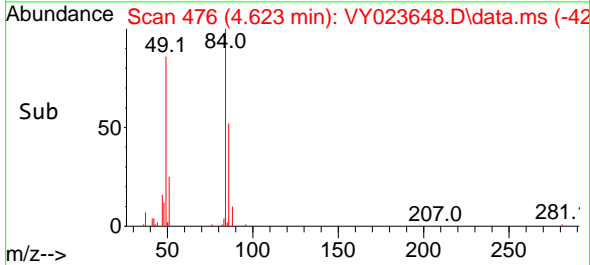
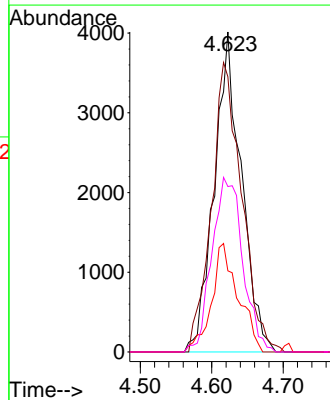
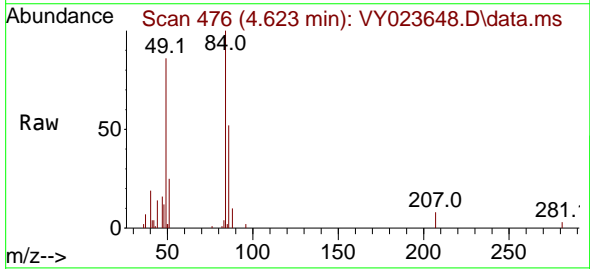


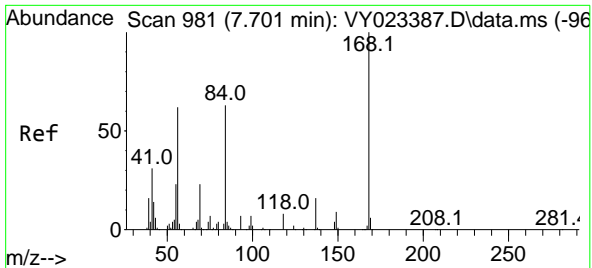
Tgt Ion:168 Resp: 759655  
 Ion Ratio Lower Upper  
 168 100  
 99 48.9 39.7 59.5



#20  
 Methylene Chloride  
 Concen: 1.298 ug/l  
 RT: 4.623 min Scan# 476  
 Delta R.T. 0.006 min  
 Lab File: VY023648.D  
 Acq: 03 Nov 2025 10:38

Tgt Ion: 84 Resp: 10613  
 Ion Ratio Lower Upper  
 84 100  
 49 86.0 80.2 120.4  
 51 25.3 25.9 38.9#  
 86 51.7 50.6 75.8

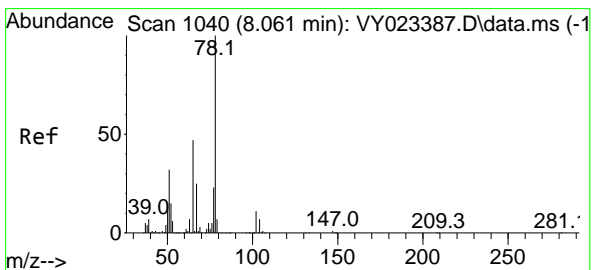
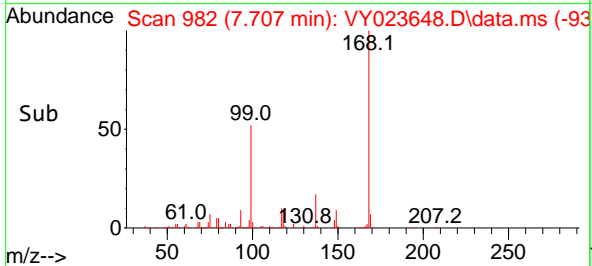
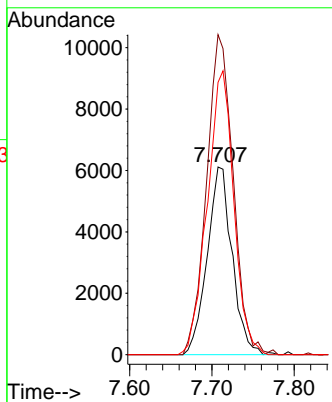
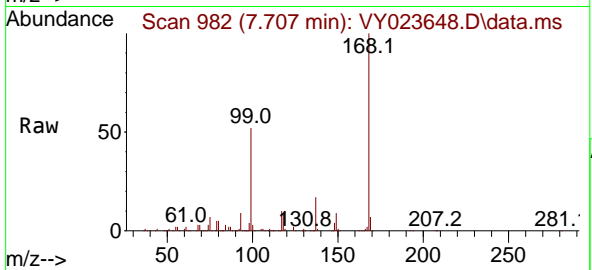




#31  
 Cyclohexane  
 Concen: 1.220 ug/l  
 RT: 7.707 min Scan# 91  
 Delta R.T. 0.006 min  
 Lab File: VY023648.D  
 Acq: 03 Nov 2025 10:38

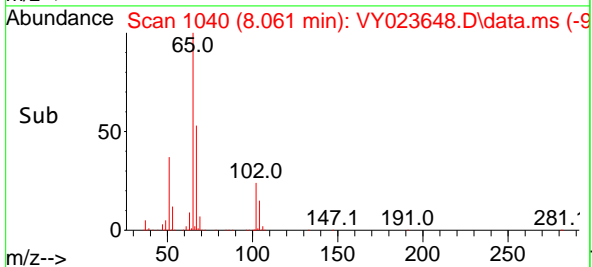
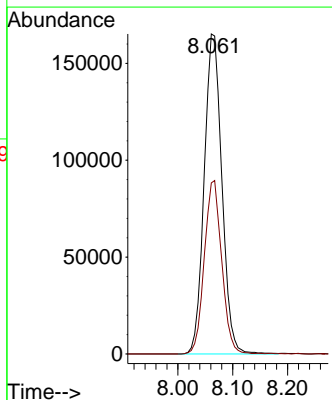
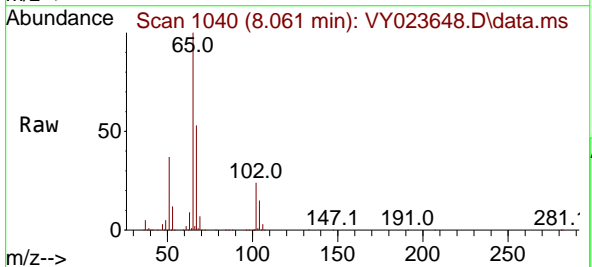
Instrument :  
 MSVOA\_Y  
 ClientSampleId :

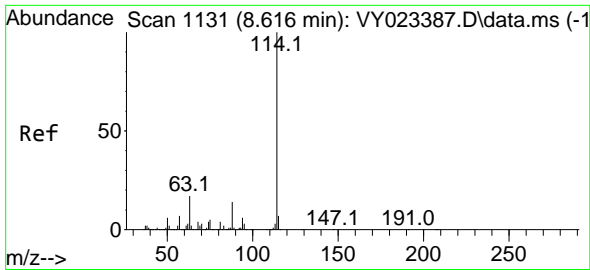
Tgt Ion: 56 Resp: 12893  
 Ion Ratio Lower Upper  
 56 100  
 69 170.5 30.0 45.0#  
 84 145.0 81.2 121.8#



#33  
 1,2-Dichloroethane-d4  
 Concen: 58.325 ug/l  
 RT: 8.061 min Scan# 1040  
 Delta R.T. 0.000 min  
 Lab File: VY023648.D  
 Acq: 03 Nov 2025 10:38

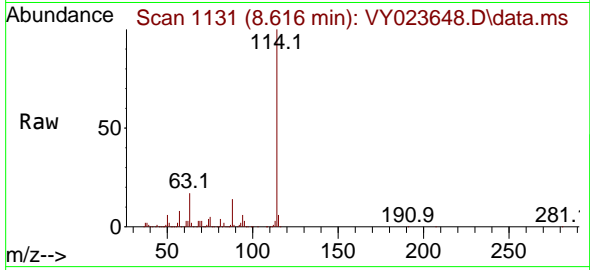
Tgt Ion: 65 Resp: 370500  
 Ion Ratio Lower Upper  
 65 100  
 67 53.2 0.0 105.8



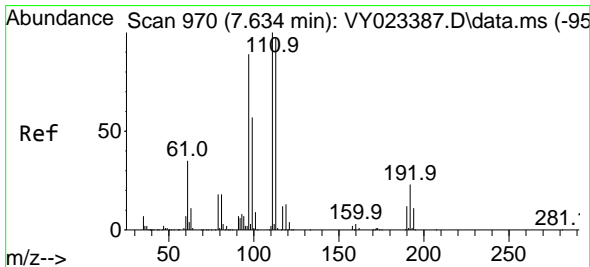
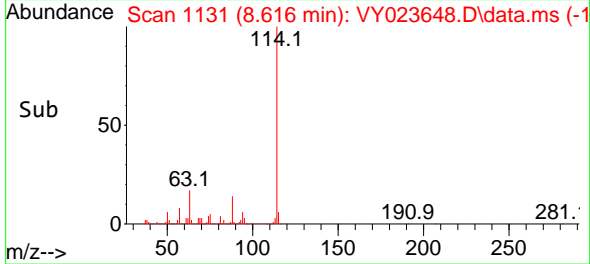
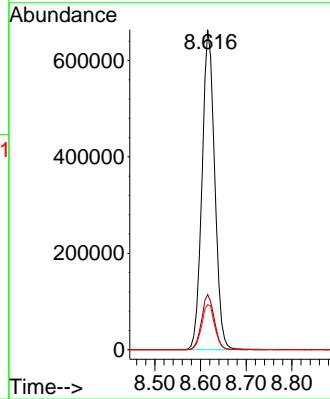


#34  
 1,4-Difluorobenzene  
 Concen: 50.000 ug/l  
 RT: 8.616 min Scan# 1131  
 Delta R.T. 0.000 min  
 Lab File: VY023648.D  
 Acq: 03 Nov 2025 10:38

Instrument :  
 MSVOA\_Y  
 ClientSampleId :

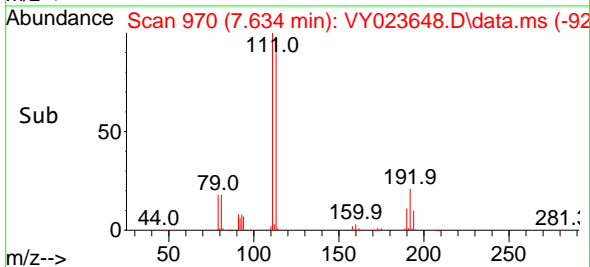
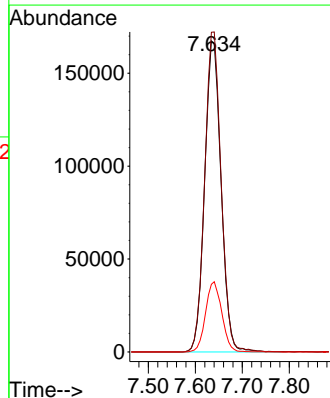
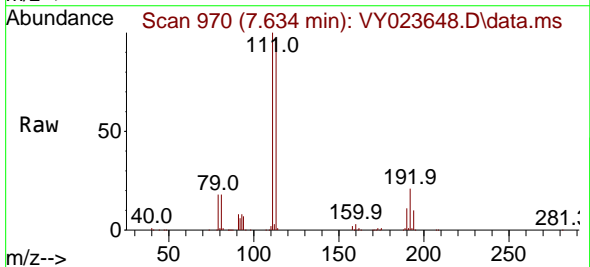


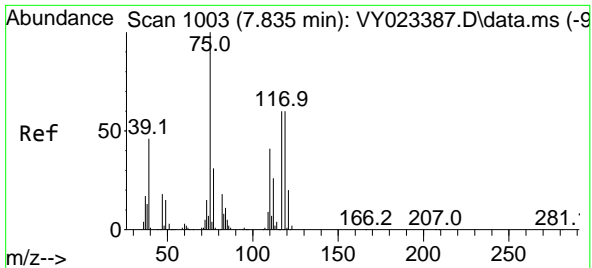
Tgt Ion:114 Resp: 1277366  
 Ion Ratio Lower Upper  
 114 100  
 63 17.2 0.0 34.2  
 88 14.0 0.0 28.4



#35  
 Dibromofluoromethane  
 Concen: 51.639 ug/l  
 RT: 7.634 min Scan# 970  
 Delta R.T. 0.000 min  
 Lab File: VY023648.D  
 Acq: 03 Nov 2025 10:38

Tgt Ion:113 Resp: 405302  
 Ion Ratio Lower Upper  
 113 100  
 111 102.8 81.8 122.6  
 192 22.4 18.0 27.0

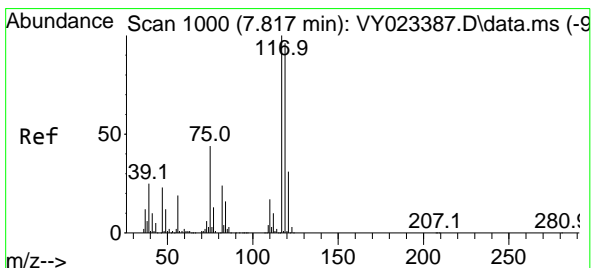
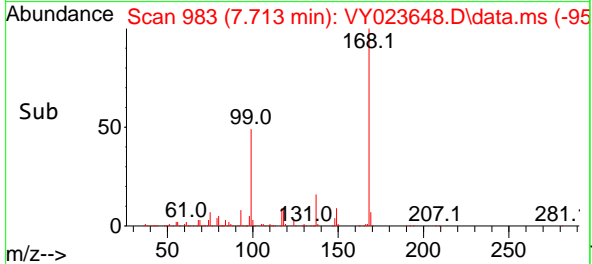
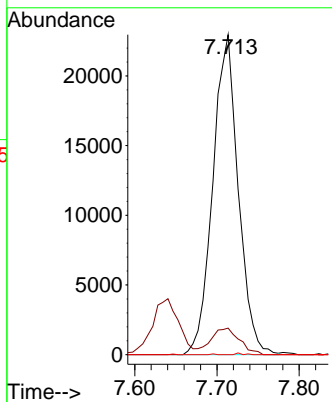
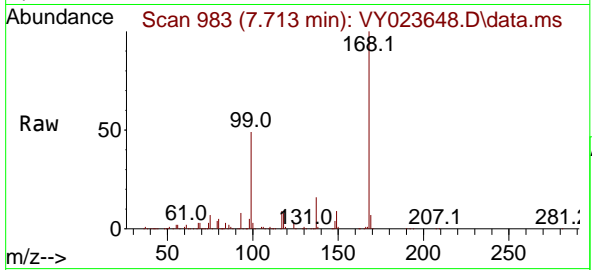




#36  
 1,1-Dichloropropene  
 Concen: 4.750 ug/l  
 RT: 7.713 min Scan# 983  
 Delta R.T. -0.122 min  
 Lab File: VY023648.D  
 Acq: 03 Nov 2025 10:38

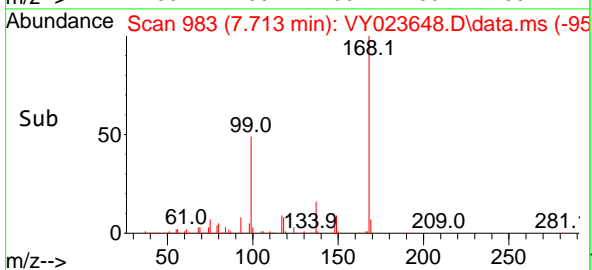
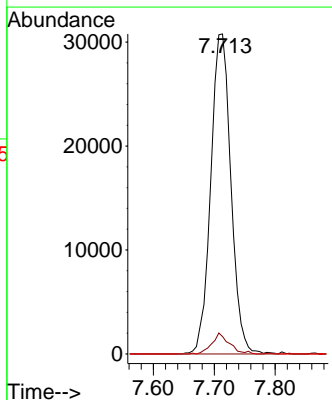
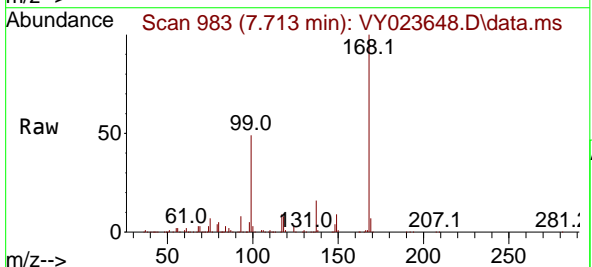
Instrument :  
 MSVOA\_Y  
 ClientSampleId :

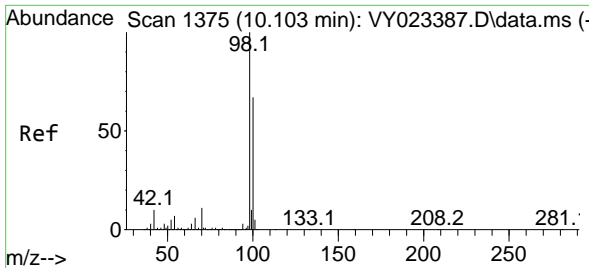
Tgt Ion: 75 Resp: 49360  
 Ion Ratio Lower Upper  
 75 100  
 110 9.2 19.9 59.7#  
 77 0.1 25.0 37.6#



#38  
 Carbon Tetrachloride  
 Concen: 5.619 ug/l  
 RT: 7.713 min Scan# 983  
 Delta R.T. -0.104 min  
 Lab File: VY023648.D  
 Acq: 03 Nov 2025 10:38

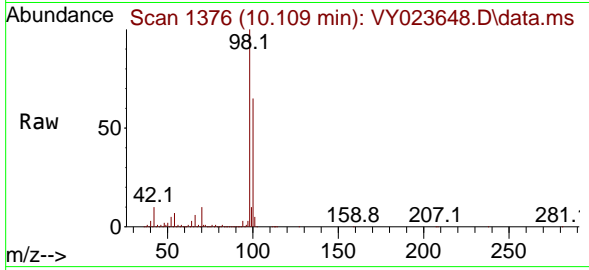
Tgt Ion: 117 Resp: 70796  
 Ion Ratio Lower Upper  
 117 100  
 119 5.4 76.8 115.2#  
 121 0.0 24.5 36.7#



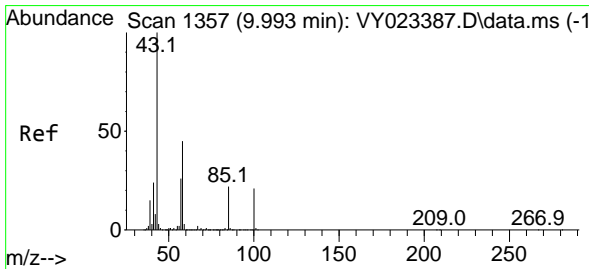
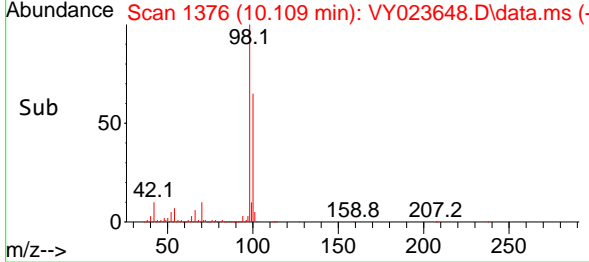
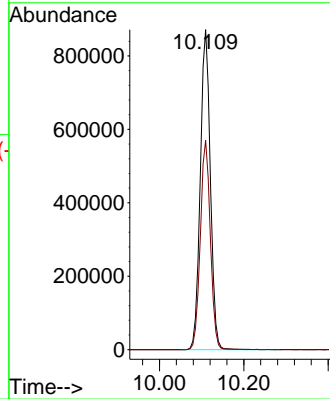


#50  
 Toluene-d8  
 Concen: 49.475 ug/l  
 RT: 10.109 min Scan# 11  
 Delta R.T. 0.006 min  
 Lab File: VY023648.D  
 Acq: 03 Nov 2025 10:38

Instrument :  
 MSVOA\_Y  
 ClientSampleId :

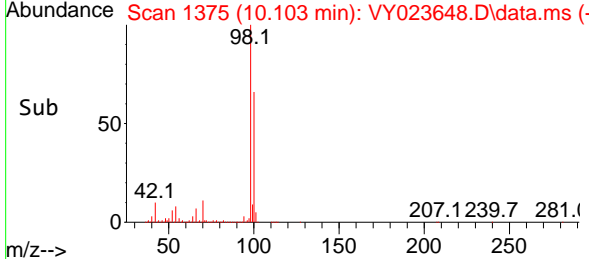
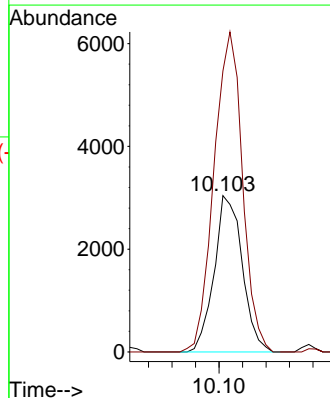
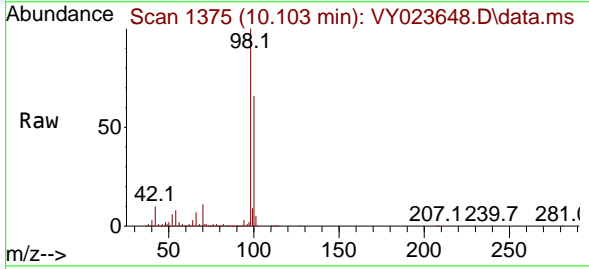


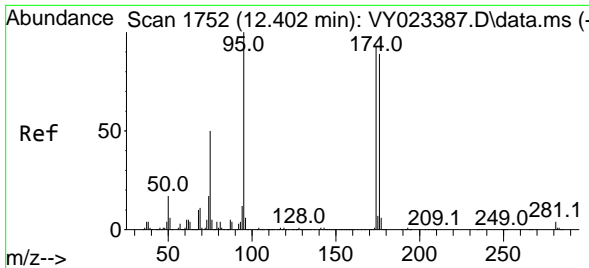
Tgt Ion: 98 Resp: 1446129  
 Ion Ratio Lower Upper  
 98 100  
 100 65.2 53.0 79.4



#51  
 4-Methyl-2-Pentanone  
 Concen: 1.190 ug/l  
 RT: 10.103 min Scan# 1375  
 Delta R.T. 0.110 min  
 Lab File: VY023648.D  
 Acq: 03 Nov 2025 10:38

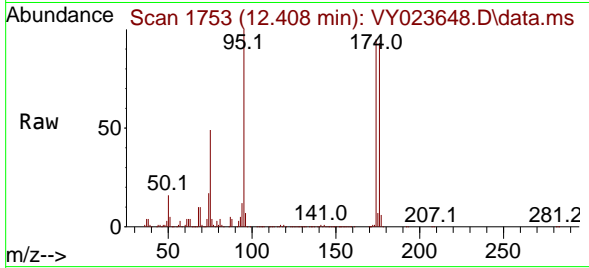
Tgt Ion: 43 Resp: 5047  
 Ion Ratio Lower Upper  
 43 100  
 58 208.0 35.3 52.9#



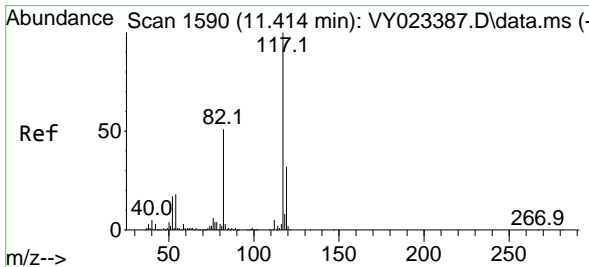
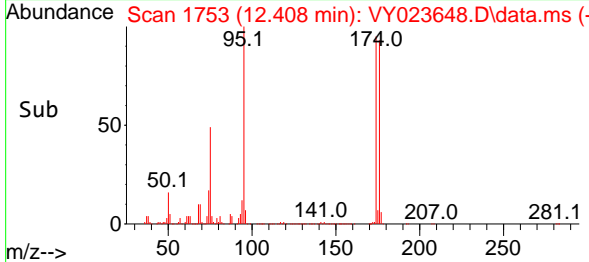
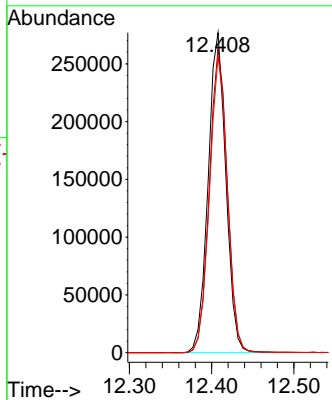


#62  
 4-Bromofluorobenzene  
 Concen: 43.191 ug/l  
 RT: 12.408 min Scan# 1752  
 Delta R.T. 0.006 min  
 Lab File: VY023648.D  
 Acq: 03 Nov 2025 10:38

Instrument : MSVOA\_Y  
 ClientSampleId :

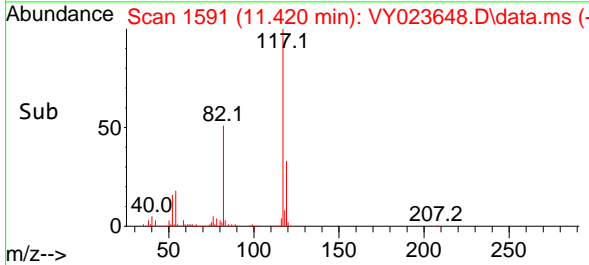
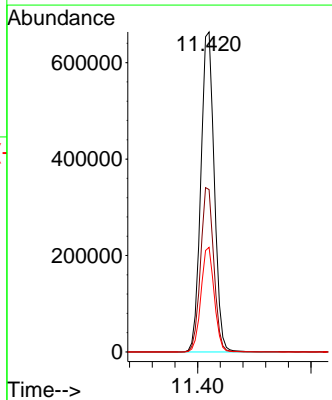
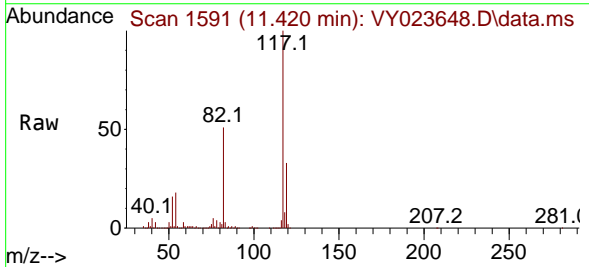


Tgt Ion: 95 Resp: 416804  
 Ion Ratio Lower Upper  
 95 100  
 174 96.0 0.0 192.8  
 176 93.0 0.0 187.6

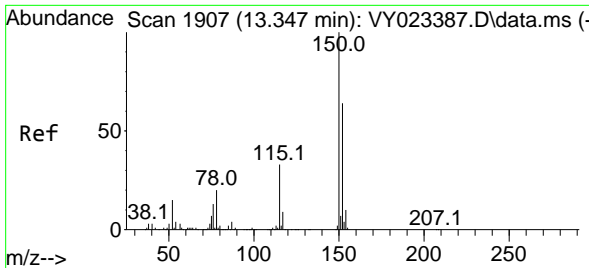


#63  
 Chlorobenzene-d5  
 Concen: 50.000 ug/l  
 RT: 11.420 min Scan# 1591  
 Delta R.T. 0.006 min  
 Lab File: VY023648.D  
 Acq: 03 Nov 2025 10:38

Tgt Ion: 117 Resp: 1087348  
 Ion Ratio Lower Upper  
 117 100  
 82 50.7 41.0 61.4  
 119 32.7 25.6 38.4

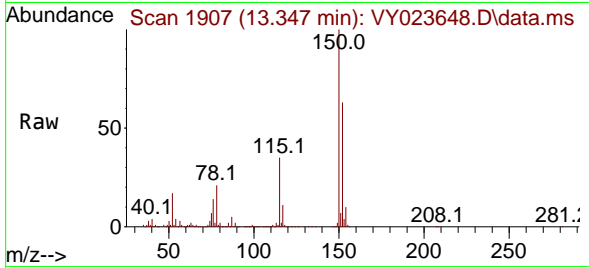




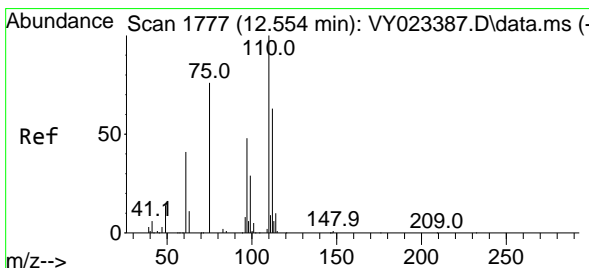
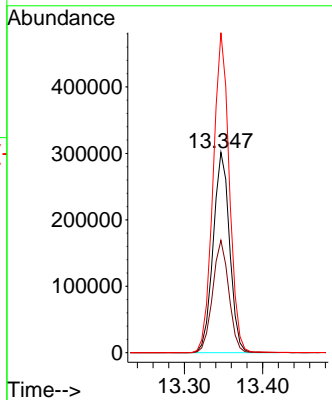
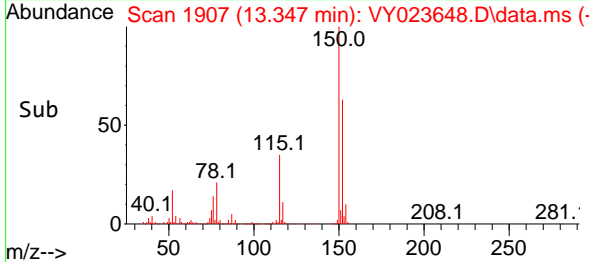


#72  
 1,4-Dichlorobenzene-d4  
 Concen: 50.000 ug/l  
 RT: 13.347 min Scan# 1907  
 Delta R.T. 0.000 min  
 Lab File: VY023648.D  
 Acq: 03 Nov 2025 10:38

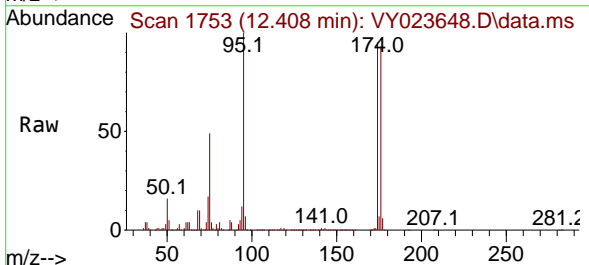
Instrument :  
 MSVOA\_Y  
 ClientSampleId :



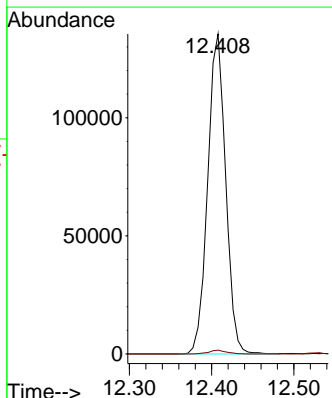
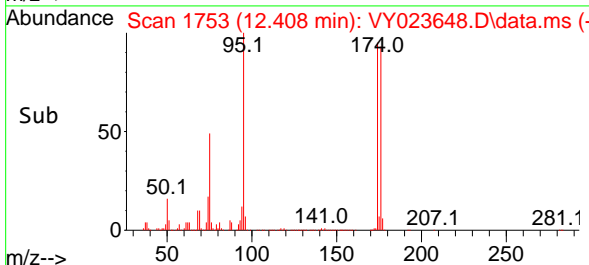
Tgt Ion:152 Resp: 440158  
 Ion Ratio Lower Upper  
 152 100  
 115 55.1 27.1 81.2  
 150 157.5 0.0 347.4

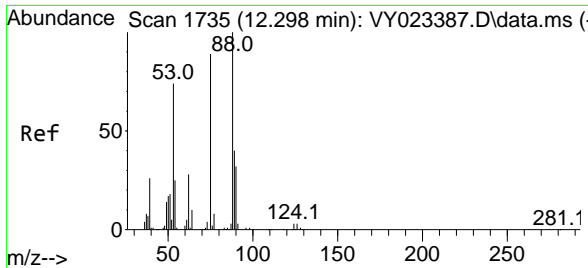


#76  
 1,2,3-Trichloropropane  
 Concen: 52.960 ug/l  
 RT: 12.408 min Scan# 1753  
 Delta R.T. -0.146 min  
 Lab File: VY023648.D  
 Acq: 03 Nov 2025 10:38



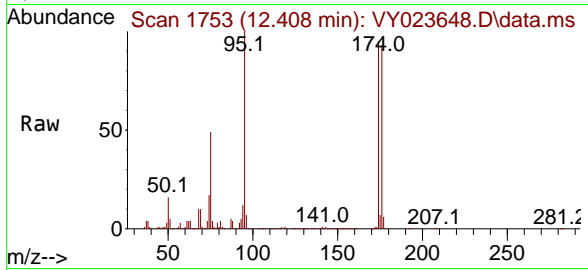
Tgt Ion: 75 Resp: 205663  
 Ion Ratio Lower Upper  
 75 100  
 77 1.2 0.0 0.0#





#81  
 trans-1,4-Dichloro-2-butene  
 Concen: 129.868 ug/l  
 RT: 12.408 min Scan# 1  
 Delta R.T. 0.110 min  
 Lab File: VY023648.D  
 Acq: 03 Nov 2025 10:38

Instrument :  
 MSVOA\_Y  
 ClientSampleId :



Tgt Ion: 75 Resp: 205663  
 Ion Ratio Lower Upper  
 75 100  
 53 0.2 68.6 102.8#  
 89 0.0 39.0 58.4#

