

Data Path : Z:\voasrv\HPCHEM1\MSVOA_Y\Data\VY110325\
 Data File : VY023652.D
 Acq On : 03 Nov 2025 12:39
 Operator : SY/MD
 Sample : Q3515-01
 Misc : 6.21g/5.0mL/MSVOA_Y/SOIL/B
 ALS Vial : 7 Sample Multiplier: 1

Instrument :
 MSVOA_Y
 ClientSampleId :

Quant Time: Nov 04 01:32:17 2025
 Quant Method : Z:\voasrv\HPCHEM1\MSVOA_Y\methods\82Y100725S.M
 Quant Title : SW846 8260
 QLast Update : Wed Oct 08 05:12:50 2025
 Response via : Initial Calibration

Compound	R.T.	QIon	Response	Conc	Units	Dev(Min)

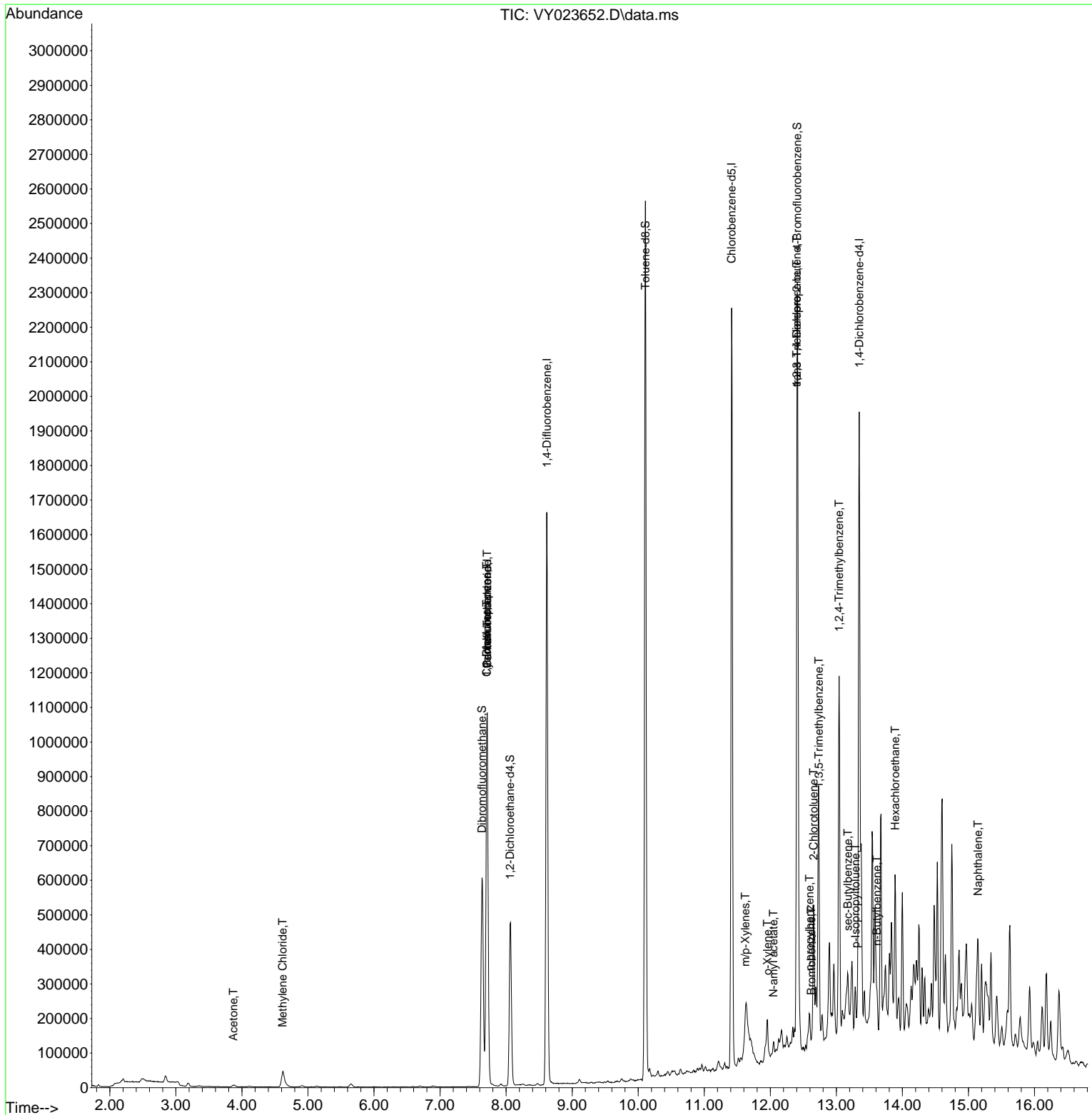
Internal Standards						
1) Pentafluorobenzene	7.713	168	895705	50.000	ug/l	0.00
34) 1,4-Difluorobenzene	8.615	114	1469927	50.000	ug/l	0.00
63) Chlorobenzene-d5	11.414	117	1236479	50.000	ug/l	0.00
72) 1,4-Dichlorobenzene-d4	13.346	152	472952	50.000	ug/l	0.00
System Monitoring Compounds						
33) 1,2-Dichloroethane-d4	8.061	65	372642	49.752	ug/l	0.00
Spiked Amount	50.000	Range	50 - 163	Recovery	=	99.500%
35) Dibromofluoromethane	7.634	113	437084	48.393	ug/l	0.00
Spiked Amount	50.000	Range	54 - 147	Recovery	=	96.780%
50) Toluene-d8	10.109	98	1667567	49.577	ug/l	0.00
Spiked Amount	50.000	Range	58 - 134	Recovery	=	99.160%
62) 4-Bromofluorobenzene	12.407	95	481923	43.397	ug/l	0.00
Spiked Amount	50.000	Range	30 - 143	Recovery	=	86.800%
Target Compounds						
						Qvalue
16) Acetone	3.872	43	8884	4.982	ug/l	91
20) Methylene Chloride	4.616	84	33865	3.512	ug/l	96
31) Cyclohexane	7.707	56	16550	1.328	ug/l #	1
36) 1,1-Dichloropropene	7.707	75	57678	4.824	ug/l #	47
38) Carbon Tetrachloride	7.713	117	82624	5.699	ug/l #	17
68) m/p-Xylenes	11.621	106	27577	1.579	ug/l	91
69) o-Xylene	11.956	106	29419	1.796	ug/l	94
74) N-amyl acetate	12.048	43	7007	1.252	ug/l #	58
76) 1,2,3-Trichloropropane	12.401	75	242212	58.047	ug/l #	100
77) Bromobenzene	12.621	156	37601	4.538	ug/l #	1
78) n-propylbenzene	12.596	91	66211	1.836	ug/l	100
79) 2-Chlorotoluene	12.657	91	37421	1.772	ug/l #	38
80) 1,3,5-Trimethylbenzene	12.737	105	137289	5.451	ug/l	99
81) trans-1,4-Dichloro-2-b...	12.401	75	242212	142.342	ug/l #	15
84) 1,2,4-Trimethylbenzene	13.042	105	548337	21.815	ug/l	99
85) sec-Butylbenzene	13.176	105	44907	1.346	ug/l	87
86) p-Isopropyltoluene	13.291	119	29991	1.056	ug/l	99
89) n-Butylbenzene	13.615	91	50053	2.023	ug/l #	75
90) Hexachloroethane	13.889	117	15160	2.482	ug/l #	8
95) Naphthalene	15.145	128	208401	14.840	ug/l	99

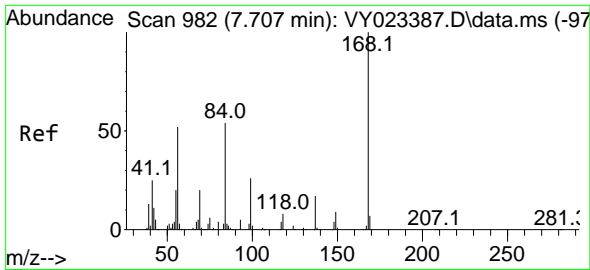
(#) = qualifier out of range (m) = manual integration (+) = signals summed

Data Path : Z:\voasrv\HPCHEM1\MSVOA_Y\Data\VY110325\
 Data File : VY023652.D
 Acq On : 03 Nov 2025 12:39
 Operator : SY/MD
 Sample : Q3515-01
 Misc : 6.21g/5.0mL/MSVOA_Y/SOIL/B
 ALS Vial : 7 Sample Multiplier: 1

Instrument :
 MSVOA_Y
 ClientSampleId :

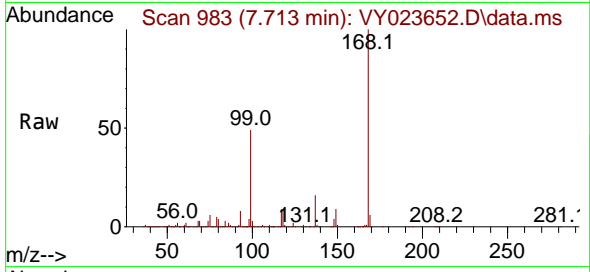
Quant Time: Nov 04 01:32:17 2025
 Quant Method : Z:\voasrv\HPCHEM1\MSVOA_Y\methods\82Y100725S.M
 Quant Title : SW846 8260
 QLast Update : Wed Oct 08 05:12:50 2025
 Response via : Initial Calibration



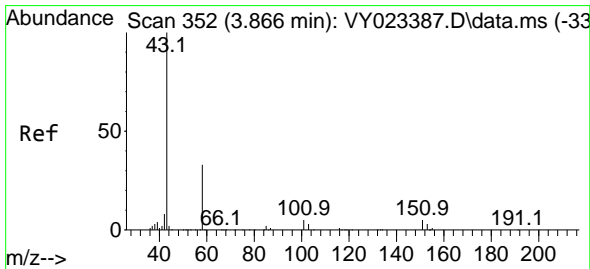
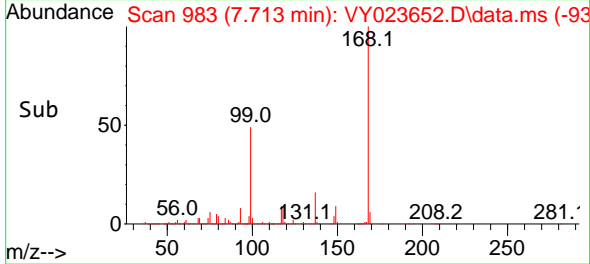
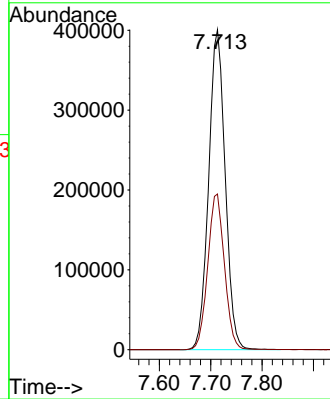


#1
 Pentafluorobenzene
 Concen: 50.000 ug/l
 RT: 7.713 min Scan# 91
 Delta R.T. 0.006 min
 Lab File: VY023652.D
 Acq: 03 Nov 2025 12:39

Instrument :
 MSVOA_Y
 ClientSampleId :

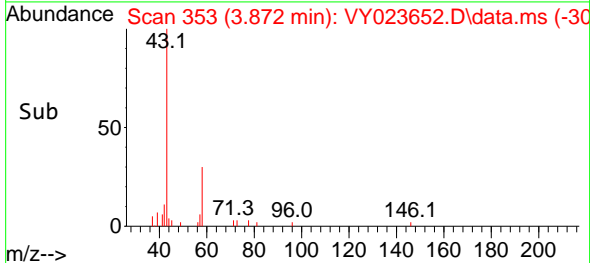
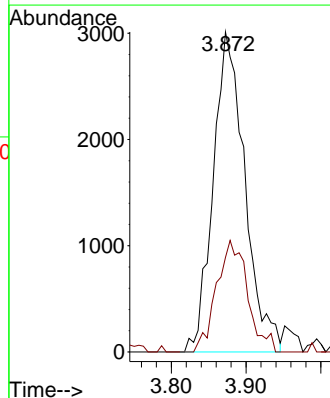
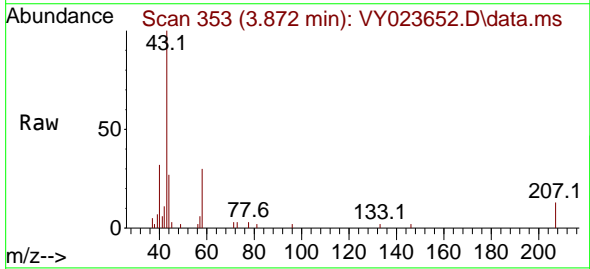


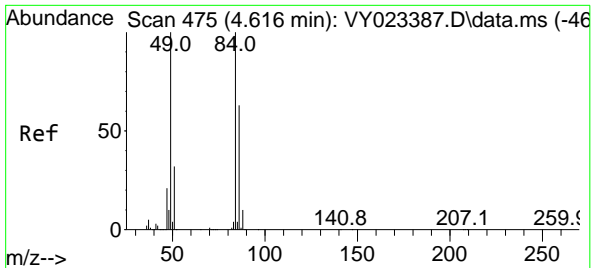
Tgt Ion:168 Resp: 895705
 Ion Ratio Lower Upper
 168 100
 99 48.6 39.7 59.5



#16
 Acetone
 Concen: 4.982 ug/l
 RT: 3.872 min Scan# 353
 Delta R.T. 0.006 min
 Lab File: VY023652.D
 Acq: 03 Nov 2025 12:39

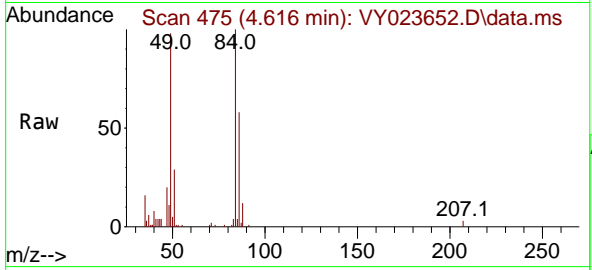
Tgt Ion: 43 Resp: 8884
 Ion Ratio Lower Upper
 43 100
 58 29.5 27.7 41.5





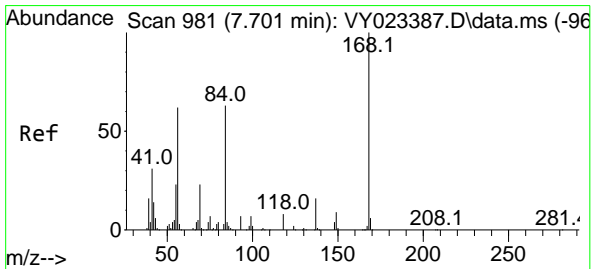
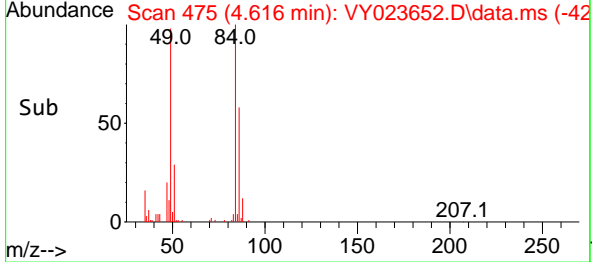
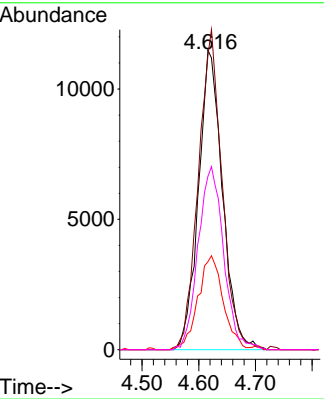
#20
 Methylene Chloride
 Concen: 3.512 ug/l
 RT: 4.616 min Scan# 41
 Delta R.T. -0.000 min
 Lab File: VY023652.D
 Acq: 03 Nov 2025 12:39

Instrument :
 MSVOA_Y
 ClientSampleId :

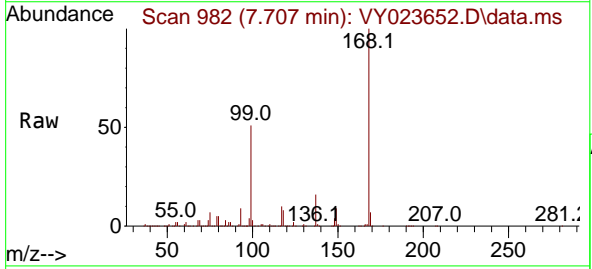


Tgt Ion: 84 Resp: 33865

Ion	Ratio	Lower	Upper
84	100		
49	98.4	80.2	120.4
51	29.4	25.9	38.9
86	57.9	50.6	75.8

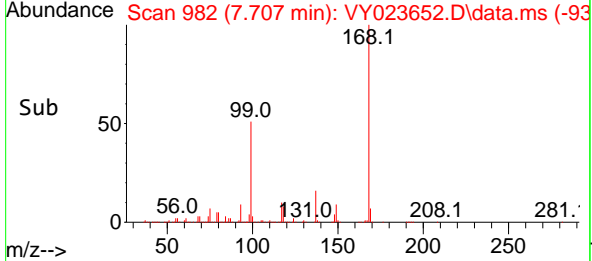
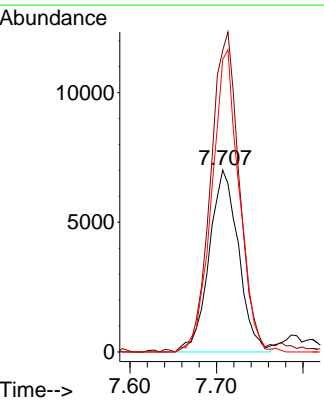


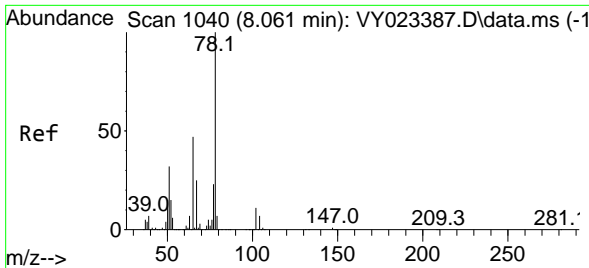
#31
 Cyclohexane
 Concen: 1.328 ug/l
 RT: 7.707 min Scan# 982
 Delta R.T. 0.006 min
 Lab File: VY023652.D
 Acq: 03 Nov 2025 12:39



Tgt Ion: 56 Resp: 16550

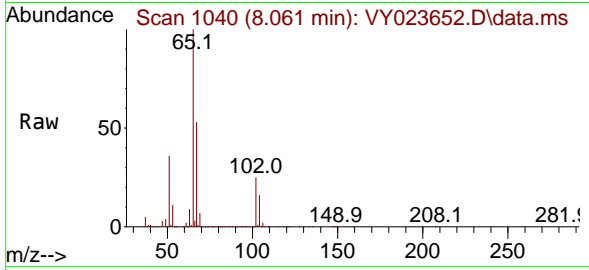
Ion	Ratio	Lower	Upper
56	100		
69	164.6	30.0	45.0#
84	160.7	81.2	121.8#



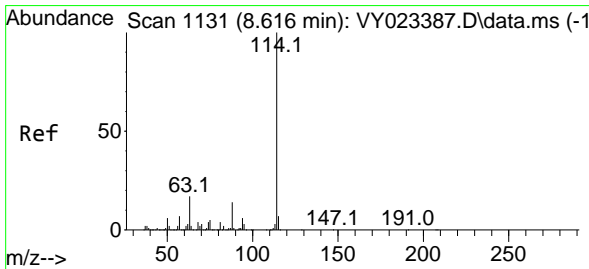
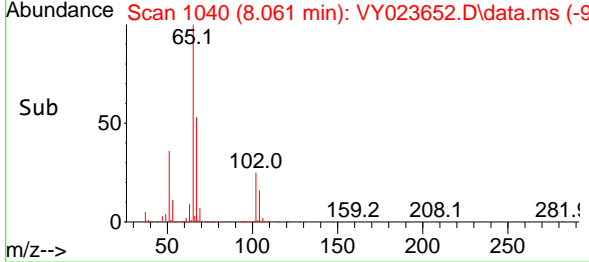
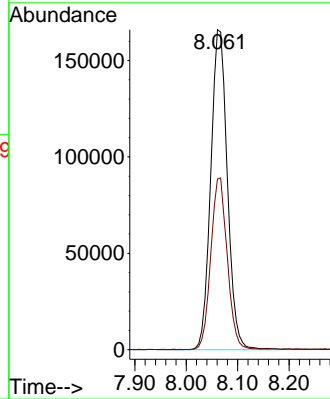


#33
 1,2-Dichloroethane-d4
 Concen: 49.752 ug/l
 RT: 8.061 min Scan# 1040
 Delta R.T. -0.000 min
 Lab File: VY023652.D
 Acq: 03 Nov 2025 12:39

Instrument : MSVOA_Y
 ClientSampleId :

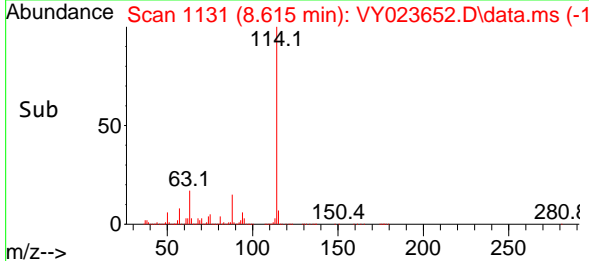
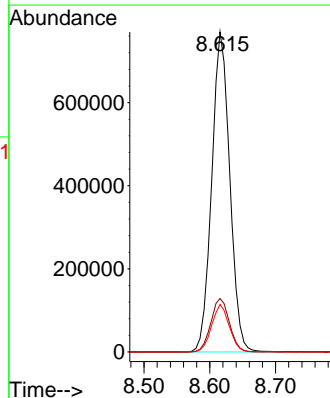
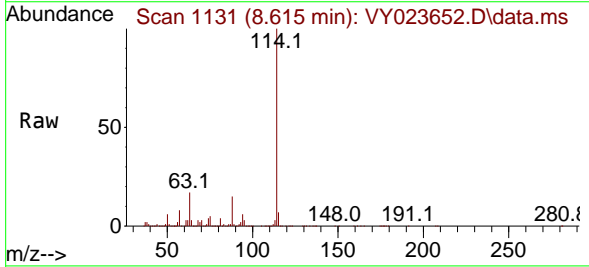


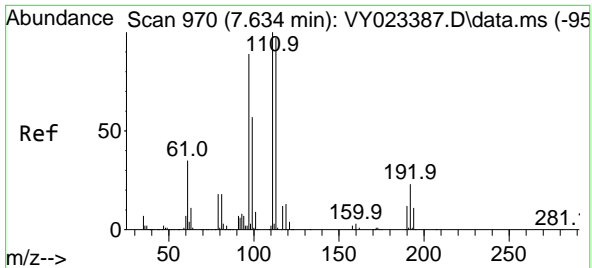
Tgt Ion: 65 Resp: 372642
 Ion Ratio Lower Upper
 65 100
 67 52.9 0.0 105.8



#34
 1,4-Difluorobenzene
 Concen: 50.000 ug/l
 RT: 8.615 min Scan# 1131
 Delta R.T. -0.000 min
 Lab File: VY023652.D
 Acq: 03 Nov 2025 12:39

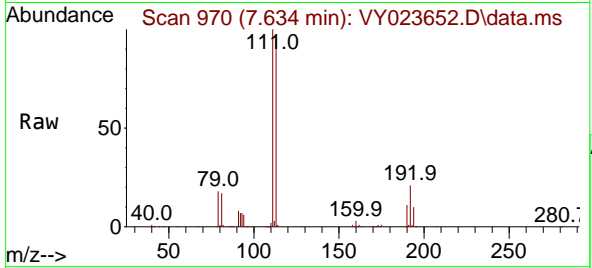
Tgt Ion: 114 Resp: 1469927
 Ion Ratio Lower Upper
 114 100
 63 16.7 0.0 34.2
 88 14.9 0.0 28.4





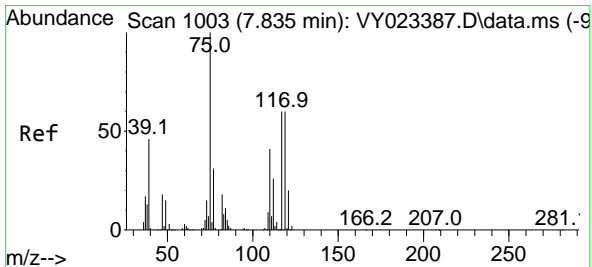
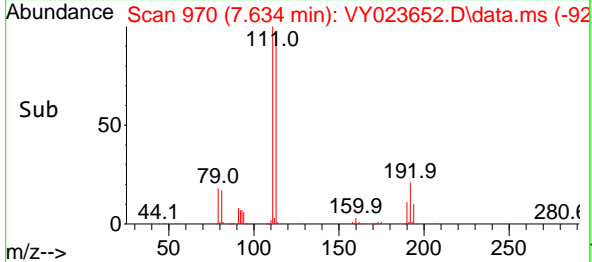
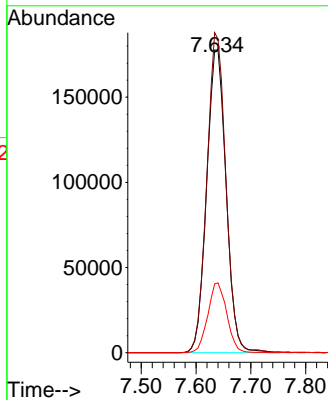
#35
 Dibromofluoromethane
 Concen: 48.393 ug/l
 RT: 7.634 min Scan# 91
 Delta R.T. -0.000 min
 Lab File: VY023652.D
 Acq: 03 Nov 2025 12:39

Instrument : MSVOA_Y
 ClientSampleId :



Tgt Ion: 113 Resp: 437084

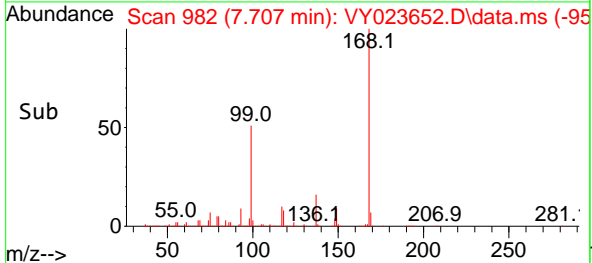
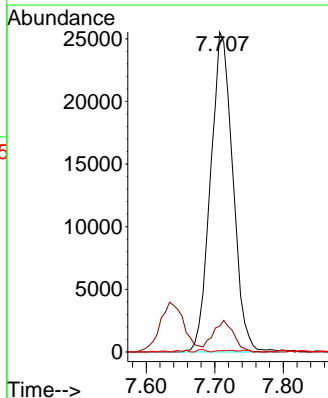
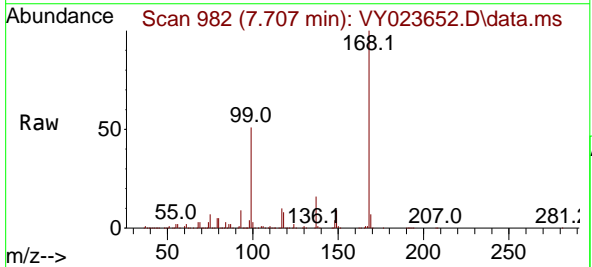
Ion	Ratio	Lower	Upper
113	100		
111	103.5	81.8	122.6
192	22.6	18.0	27.0

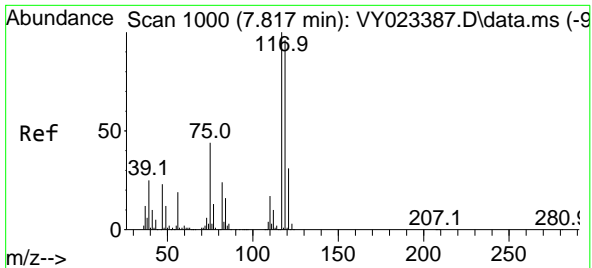


#36
 1,1-Dichloropropene
 Concen: 4.824 ug/l
 RT: 7.707 min Scan# 982
 Delta R.T. -0.128 min
 Lab File: VY023652.D
 Acq: 03 Nov 2025 12:39

Tgt Ion: 75 Resp: 57678

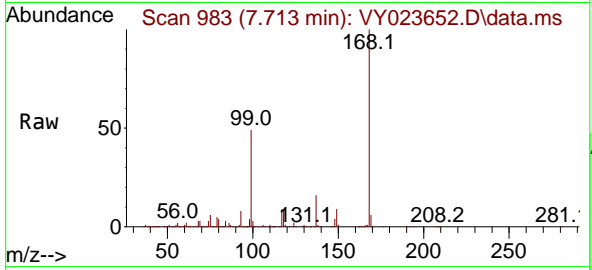
Ion	Ratio	Lower	Upper
75	100		
110	9.0	19.9	59.7#
77	0.4	25.0	37.6#



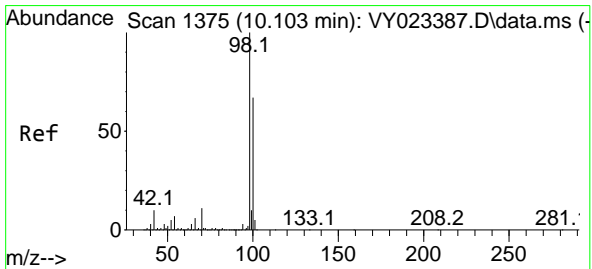
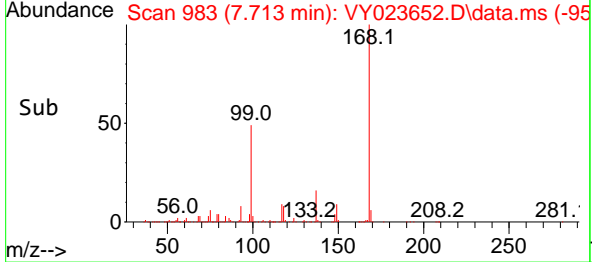
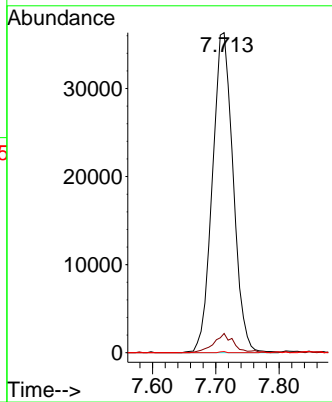


#38
 Carbon Tetrachloride
 Concen: 5.699 ug/l
 RT: 7.713 min Scan# 91
 Delta R.T. -0.104 min
 Lab File: VY023652.D
 Acq: 03 Nov 2025 12:39

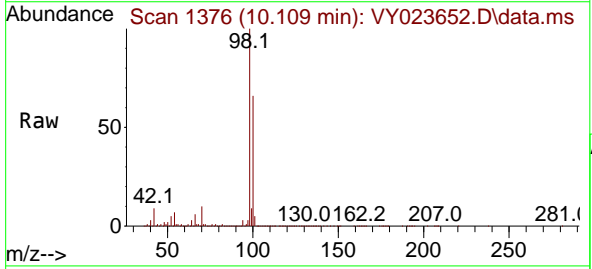
Instrument :
 MSVOA_Y
 ClientSampled :



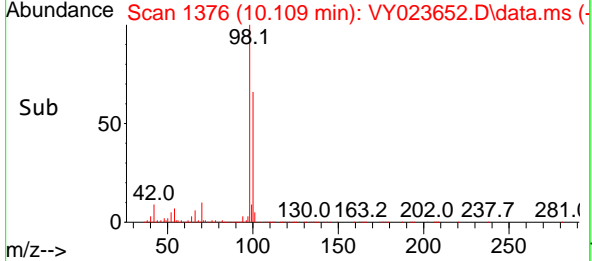
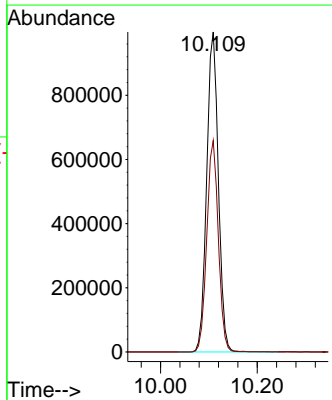
Tgt Ion:117 Resp: 82624
 Ion Ratio Lower Upper
 117 100
 119 6.0 76.8 115.2#
 121 0.3 24.5 36.7#

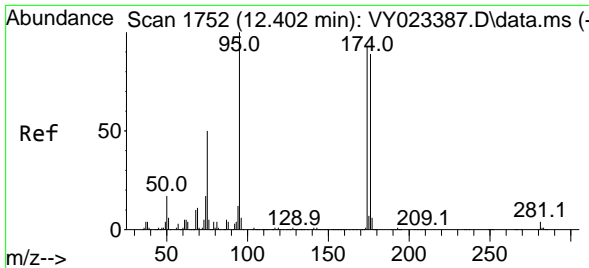


#50
 Toluene-d8
 Concen: 49.577 ug/l
 RT: 10.109 min Scan# 1376
 Delta R.T. 0.006 min
 Lab File: VY023652.D
 Acq: 03 Nov 2025 12:39



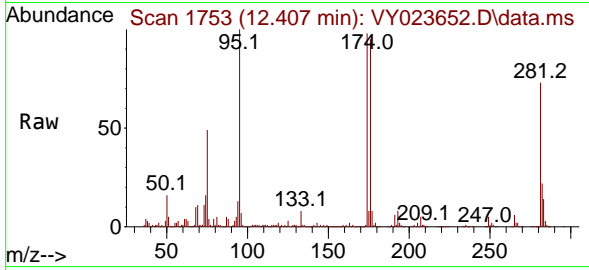
Tgt Ion: 98 Resp: 1667567
 Ion Ratio Lower Upper
 98 100
 100 65.6 53.0 79.4



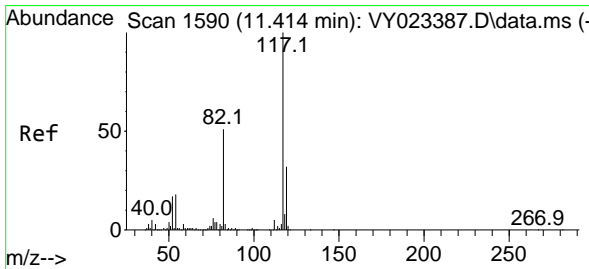
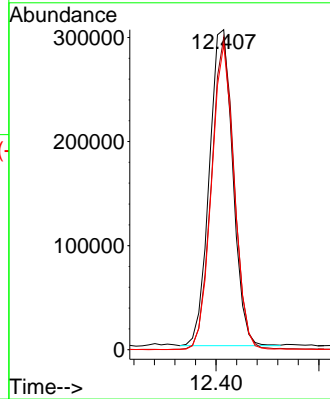
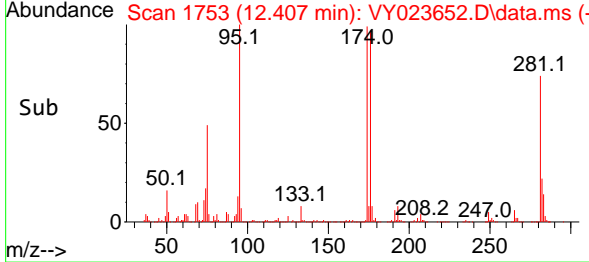


#62
 4-Bromofluorobenzene
 Concen: 43.397 ug/l
 RT: 12.407 min Scan# 1753
 Delta R.T. 0.006 min
 Lab File: VY023652.D
 Acq: 03 Nov 2025 12:39

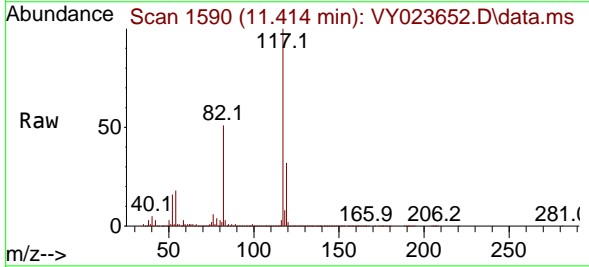
Instrument :
 MSVOA_Y
 ClientSampleId :



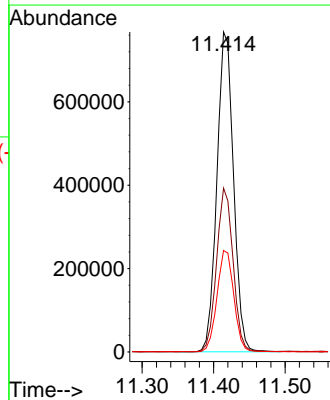
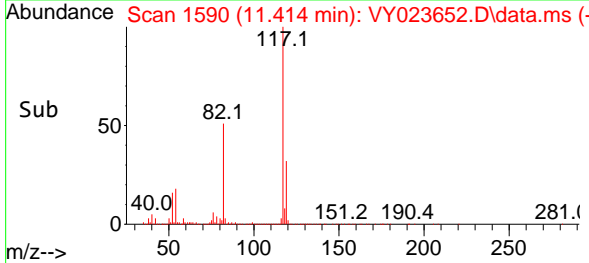
Tgt Ion: 95 Resp: 481923
 Ion Ratio Lower Upper
 95 100
 174 96.2 0.0 192.8
 176 93.1 0.0 187.6

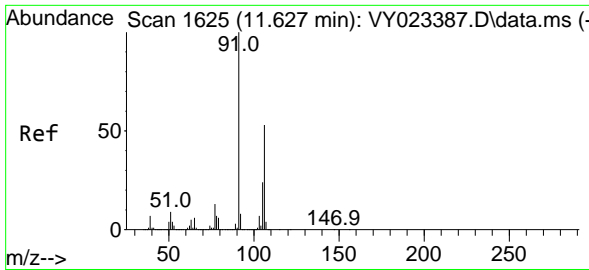


#63
 Chlorobenzene-d5
 Concen: 50.000 ug/l
 RT: 11.414 min Scan# 1590
 Delta R.T. -0.000 min
 Lab File: VY023652.D
 Acq: 03 Nov 2025 12:39



Tgt Ion: 117 Resp: 1236479
 Ion Ratio Lower Upper
 117 100
 82 51.1 41.0 61.4
 119 31.6 25.6 38.4

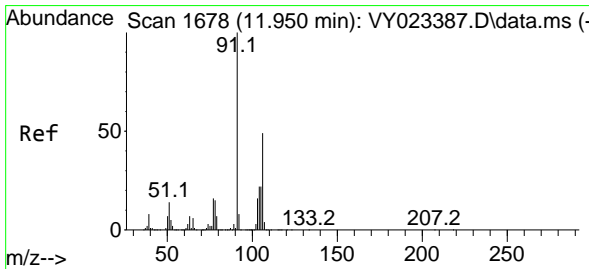
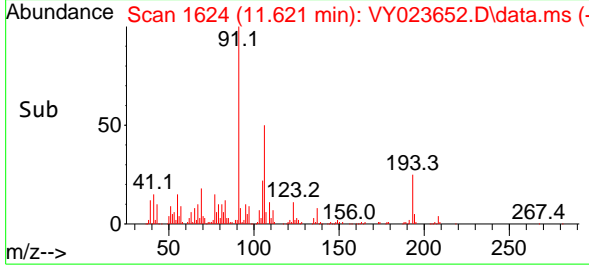
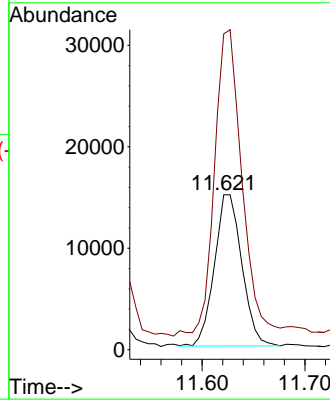
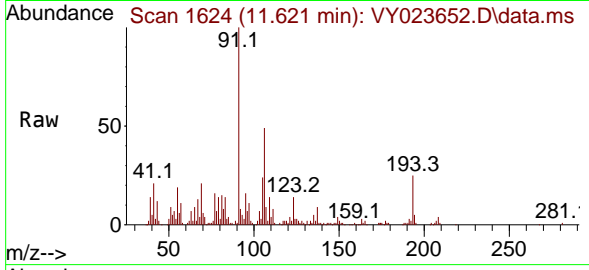




#68
 m/p-Xylenes
 Concen: 1.579 ug/l
 RT: 11.621 min Scan# 1624
 Delta R.T. -0.006 min
 Lab File: VY023652.D
 Acq: 03 Nov 2025 12:39

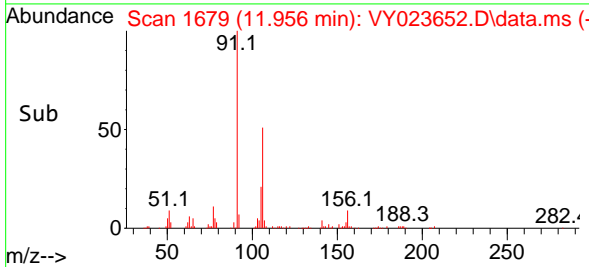
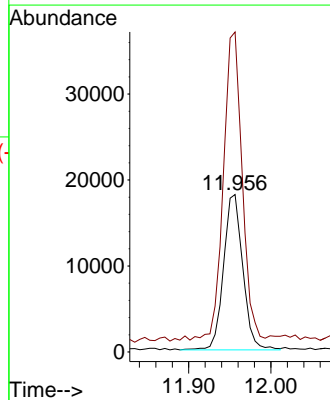
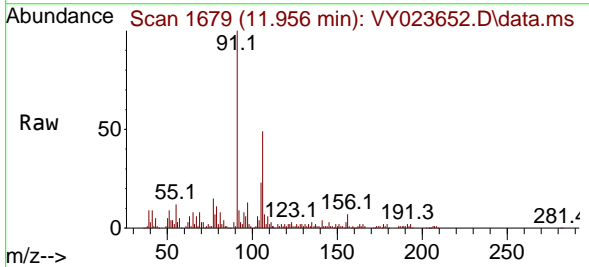
Instrument :
 MSVOA_Y
 ClientSampleId :

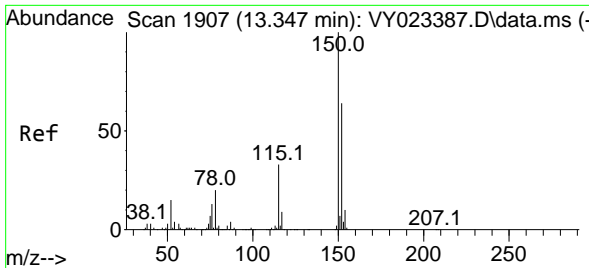
Tgt Ion:106 Resp: 27577
 Ion Ratio Lower Upper
 106 100
 91 203.4 152.6 229.0



#69
 o-Xylene
 Concen: 1.796 ug/l
 RT: 11.956 min Scan# 1679
 Delta R.T. 0.006 min
 Lab File: VY023652.D
 Acq: 03 Nov 2025 12:39

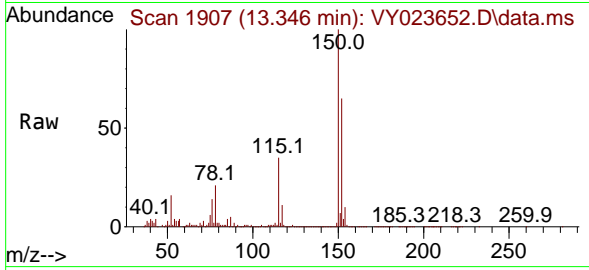
Tgt Ion:106 Resp: 29419
 Ion Ratio Lower Upper
 106 100
 91 193.2 101.4 304.1



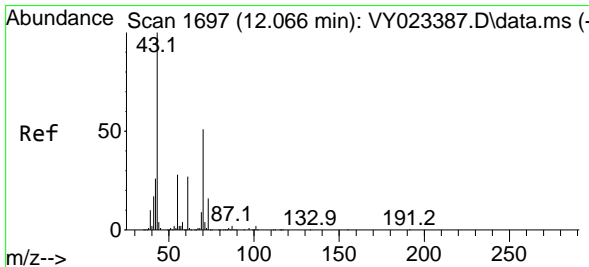
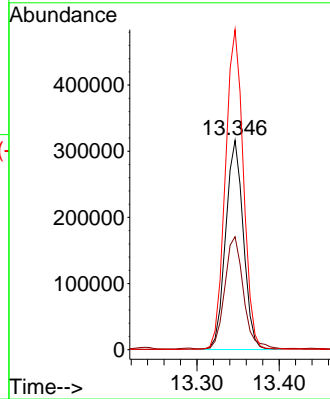
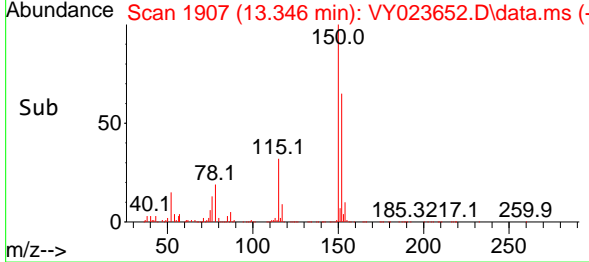


#72
 1,4-Dichlorobenzene-d4
 Concen: 50.000 ug/l
 RT: 13.346 min Scan# 1907
 Delta R.T. -0.000 min
 Lab File: VY023652.D
 Acq: 03 Nov 2025 12:39

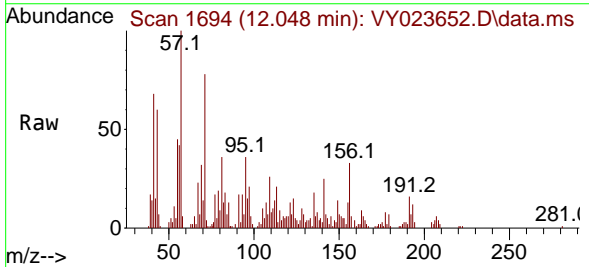
Instrument : MSVOA_Y
 ClientSampleId :



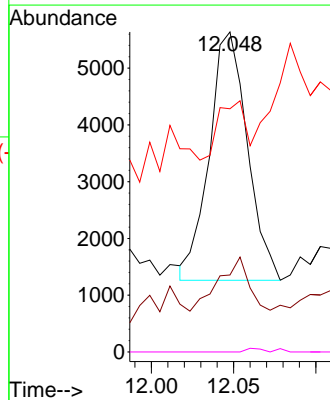
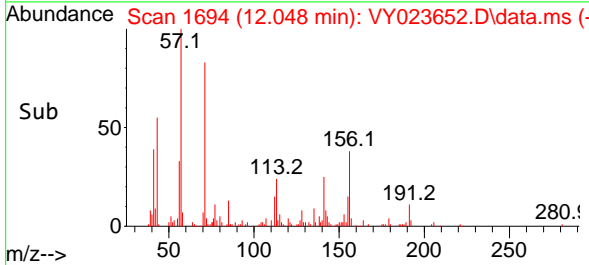
Tgt Ion:152 Resp: 472952
 Ion Ratio Lower Upper
 152 100
 115 56.5 27.1 81.2
 150 155.6 0.0 347.4

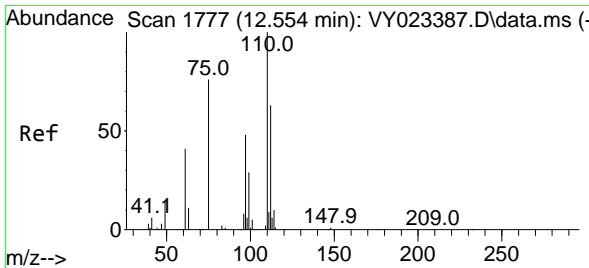


#74
 N-amy1 acetate
 Concen: 1.252 ug/l
 RT: 12.048 min Scan# 1694
 Delta R.T. -0.018 min
 Lab File: VY023652.D
 Acq: 03 Nov 2025 12:39



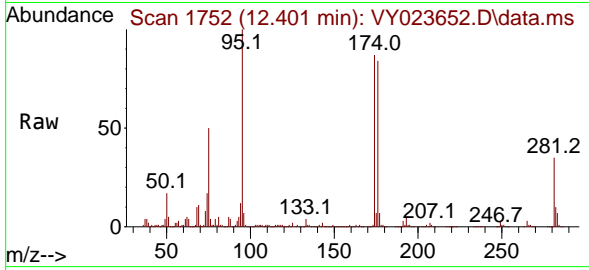
Tgt Ion: 43 Resp: 7007
 Ion Ratio Lower Upper
 43 100
 70 17.1 41.1 61.7#
 55 16.8 23.0 34.6#
 61 0.6 21.4 32.2#



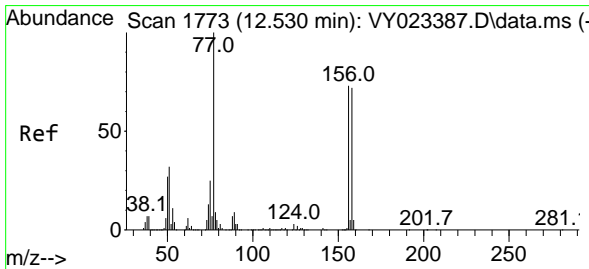
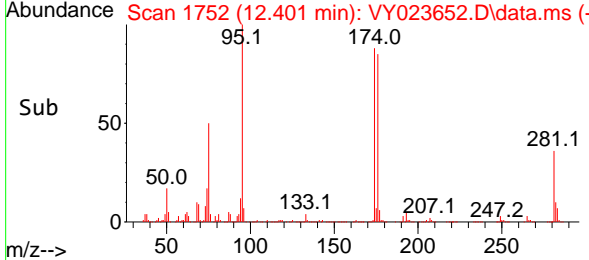
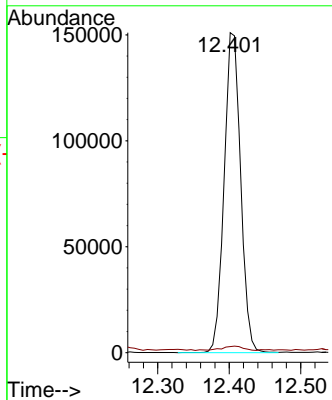


#76
 1,2,3-Trichloropropane
 Concen: 58.047 ug/l
 RT: 12.401 min Scan# 1787
 Delta R.T. -0.153 min
 Lab File: VY023652.D
 Acq: 03 Nov 2025 12:39

Instrument : MSVOA_Y
 ClientSampled :

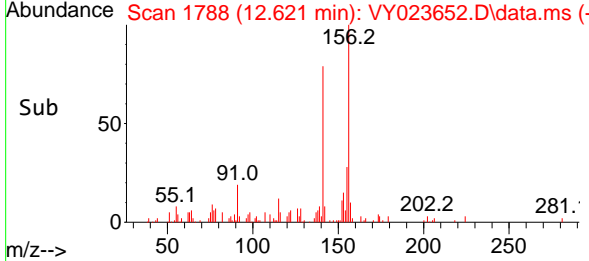
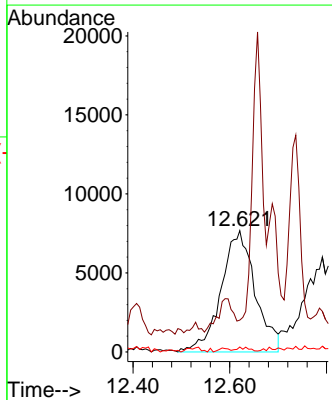
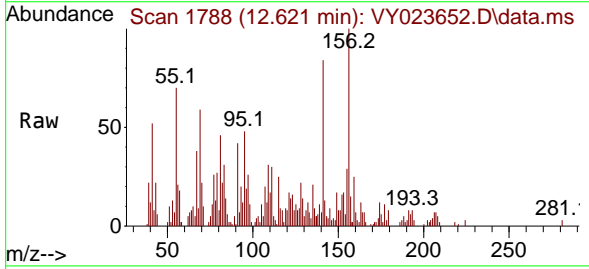


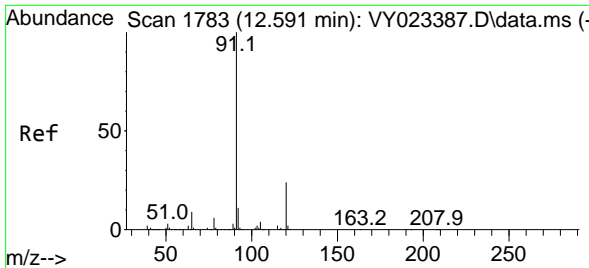
Tgt Ion: 75 Resp: 242212
 Ion Ratio Lower Upper
 75 100
 77 1.7 0.0 0.0#



#77
 Bromobenzene
 Concen: 4.538 ug/l
 RT: 12.621 min Scan# 1788
 Delta R.T. 0.091 min
 Lab File: VY023652.D
 Acq: 03 Nov 2025 12:39

Tgt Ion: 156 Resp: 37601
 Ion Ratio Lower Upper
 156 100
 77 0.0 76.8 230.5#
 158 1.0 49.0 147.2#

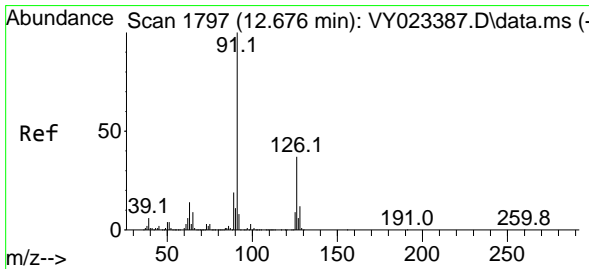
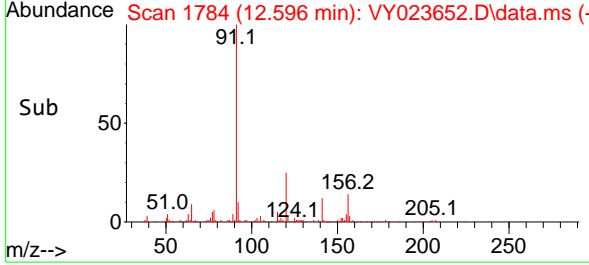
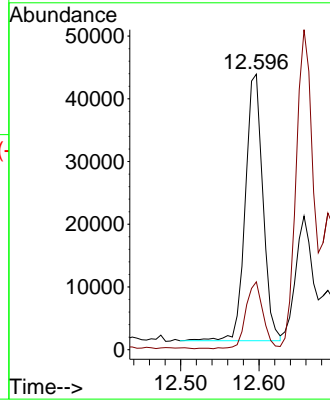
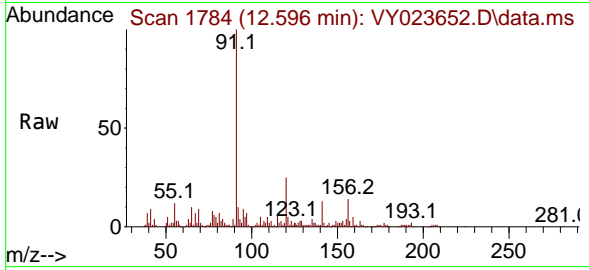




#78
 n-propylbenzene
 Concen: 1.836 ug/l
 RT: 12.596 min Scan# 1783
 Delta R.T. 0.006 min
 Lab File: VY023652.D
 Acq: 03 Nov 2025 12:39

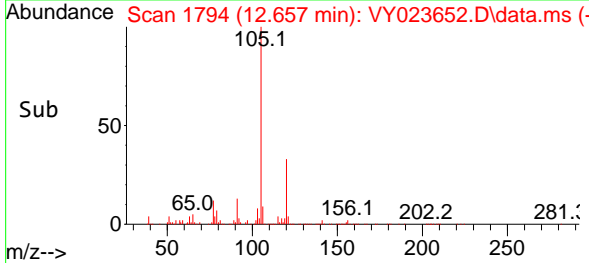
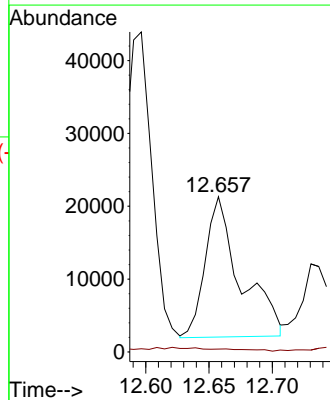
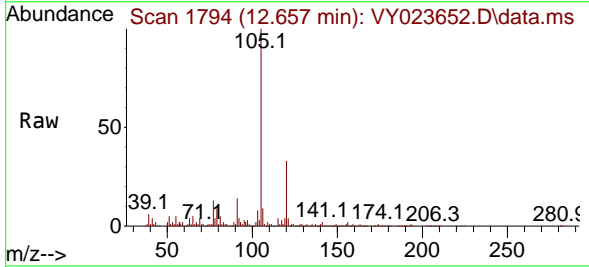
Instrument : MSVOA_Y
 ClientSampleId :

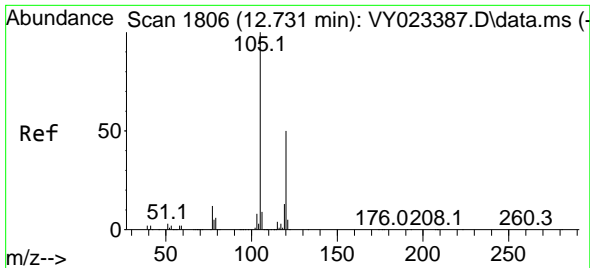
Tgt Ion: 91 Resp: 66211
 Ion Ratio Lower Upper
 91 100
 120 24.6 12.3 36.8



#79
 2-Chlorotoluene
 Concen: 1.772 ug/l
 RT: 12.657 min Scan# 1794
 Delta R.T. -0.018 min
 Lab File: VY023652.D
 Acq: 03 Nov 2025 12:39

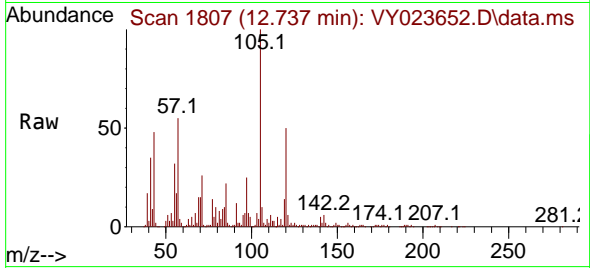
Tgt Ion: 91 Resp: 37421
 Ion Ratio Lower Upper
 91 100
 126 0.0 18.5 55.5#



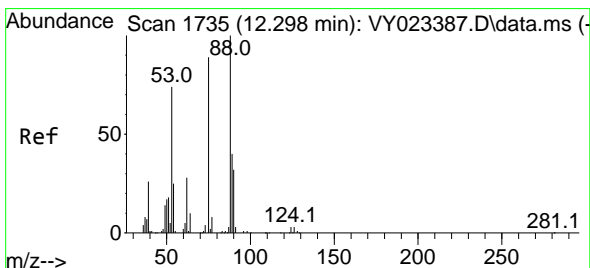
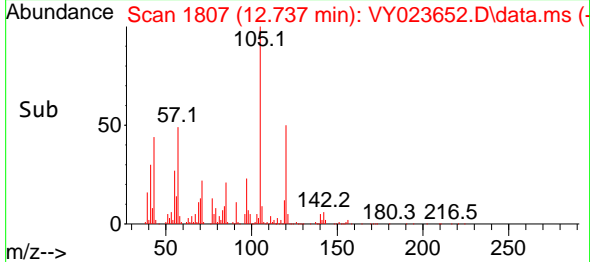
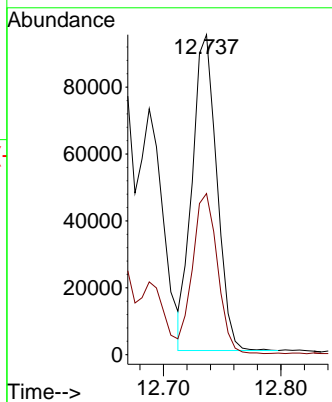


#80
 1,3,5-Trimethylbenzene
 Concen: 5.451 ug/l
 RT: 12.737 min Scan# 1752
 Delta R.T. 0.006 min
 Lab File: VY023652.D
 Acq: 03 Nov 2025 12:39

Instrument :
 MSVOA_Y
 Client Sampled :

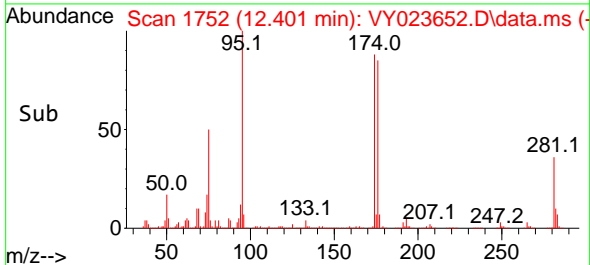
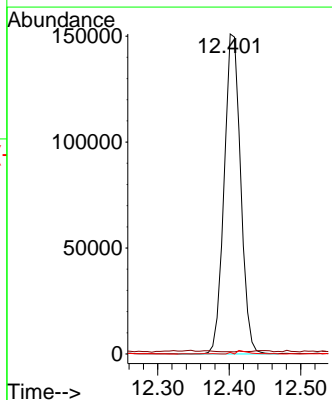
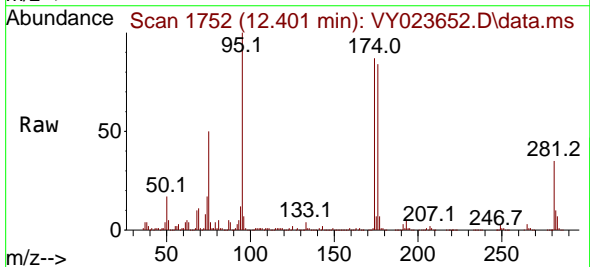


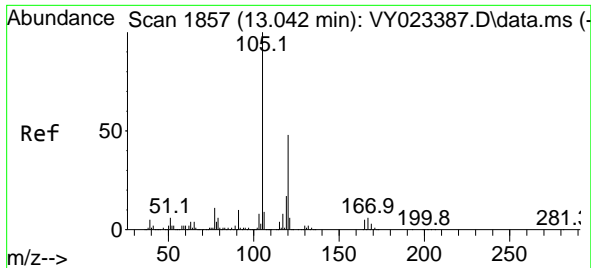
Tgt Ion: 105 Resp: 137289
 Ion Ratio Lower Upper
 105 100
 120 51.4 25.4 76.4



#81
 trans-1,4-Dichloro-2-butene
 Concen: 142.342 ug/l
 RT: 12.401 min Scan# 1752
 Delta R.T. 0.103 min
 Lab File: VY023652.D
 Acq: 03 Nov 2025 12:39

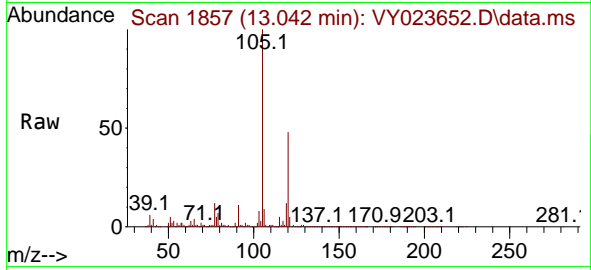
Tgt Ion: 75 Resp: 242212
 Ion Ratio Lower Upper
 75 100
 53 0.1 68.6 102.8#
 89 0.9 39.0 58.4#



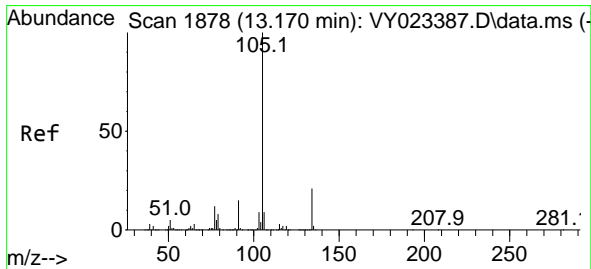
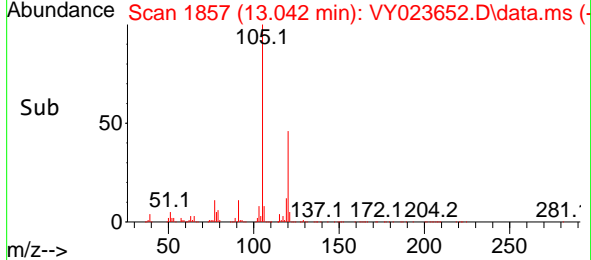
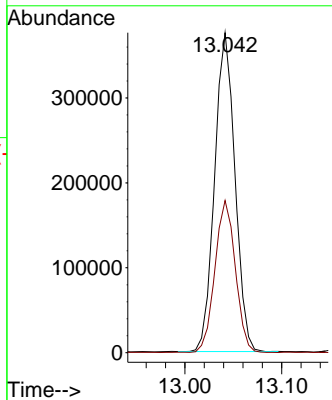


#84
 1,2,4-Trimethylbenzene
 Concen: 21.815 ug/l
 RT: 13.042 min Scan# 1857
 Delta R.T. -0.000 min
 Lab File: VY023652.D
 Acq: 03 Nov 2025 12:39

Instrument : MSVOA_Y
 ClientSampleId :

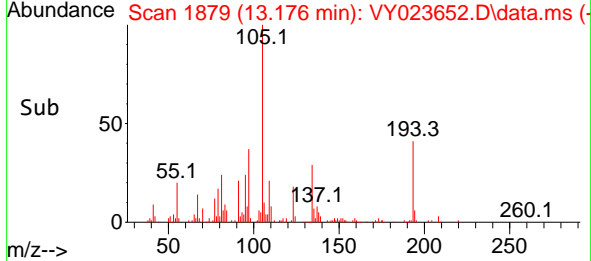
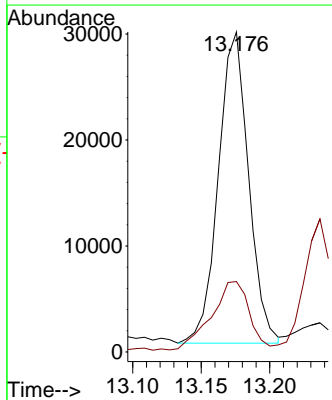
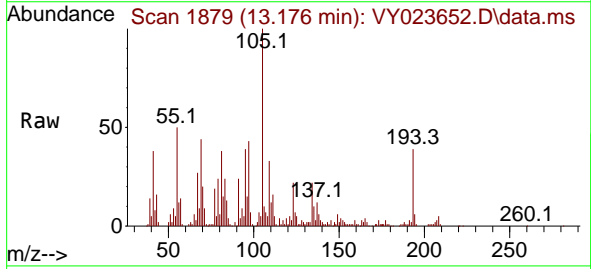


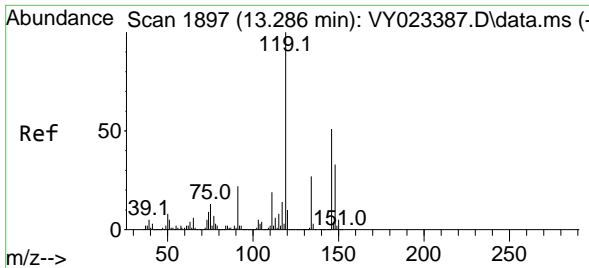
Tgt Ion:105 Resp: 548337
 Ion Ratio Lower Upper
 105 100
 120 47.9 23.8 71.2



#85
 sec-Butylbenzene
 Concen: 1.346 ug/l
 RT: 13.176 min Scan# 1879
 Delta R.T. 0.006 min
 Lab File: VY023652.D
 Acq: 03 Nov 2025 12:39

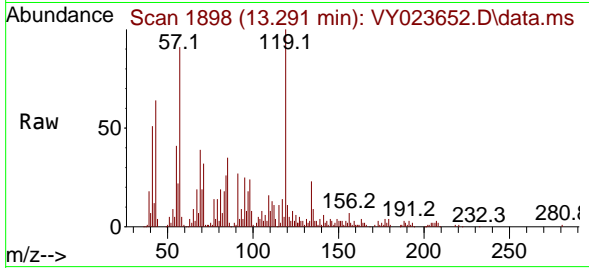
Tgt Ion:105 Resp: 44907
 Ion Ratio Lower Upper
 105 100
 134 27.4 10.7 32.1



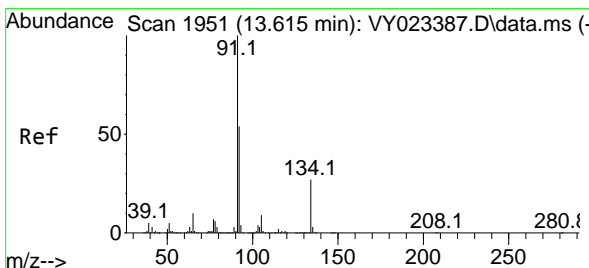
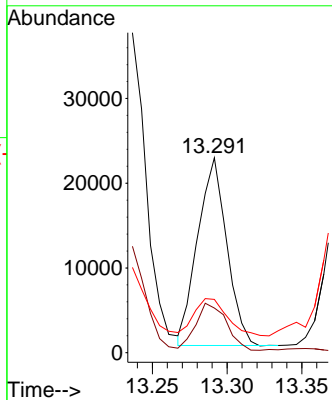
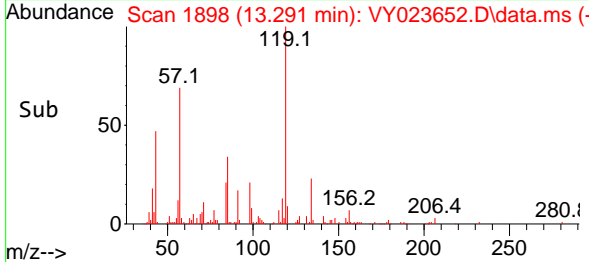


#86
 p-Isopropyltoluene
 Concen: 1.056 ug/l
 RT: 13.291 min Scan# 1898
 Delta R.T. 0.006 min
 Lab File: VY023652.D
 Acq: 03 Nov 2025 12:39

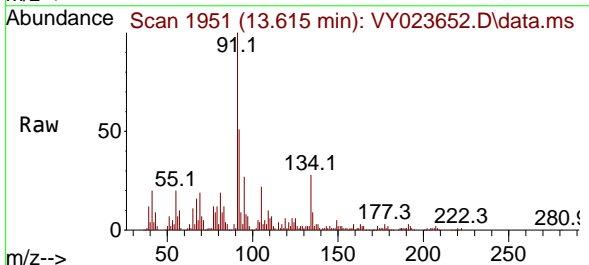
Instrument : MSVOA_Y
 ClientSampleId :



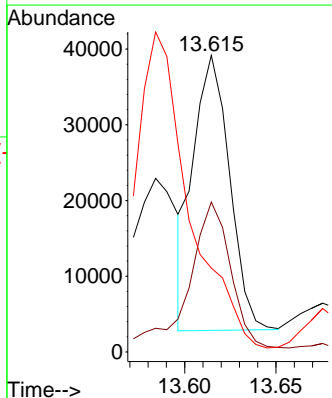
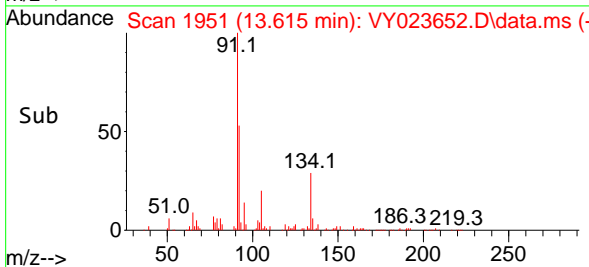
Tgt Ion:119 Resp: 29991
 Ion Ratio Lower Upper
 119 100
 134 26.5 13.6 40.7
 91 22.2 10.9 32.9

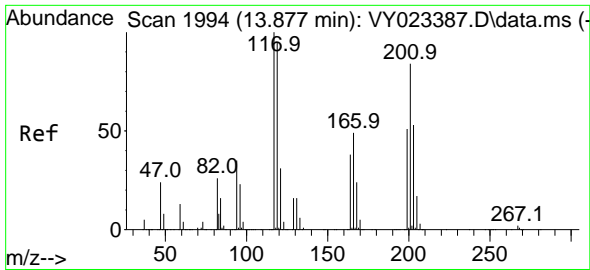


#89
 n-Butylbenzene
 Concen: 2.023 ug/l
 RT: 13.615 min Scan# 1951
 Delta R.T. -0.000 min
 Lab File: VY023652.D
 Acq: 03 Nov 2025 12:39



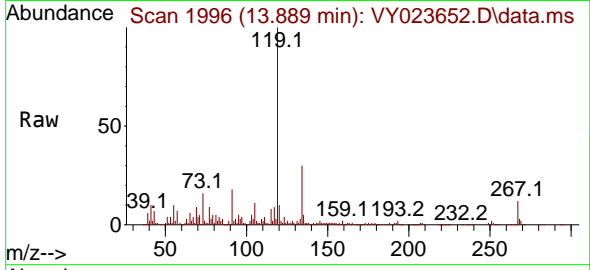
Tgt Ion: 91 Resp: 50053
 Ion Ratio Lower Upper
 91 100
 92 61.4 27.0 80.8
 134 0.0 14.1 42.2#



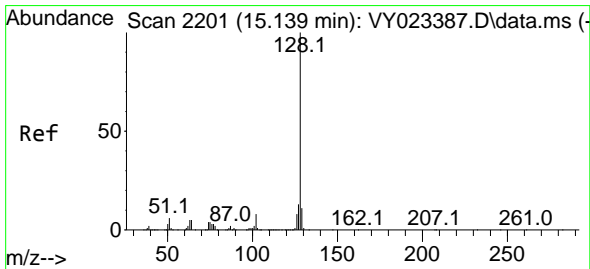
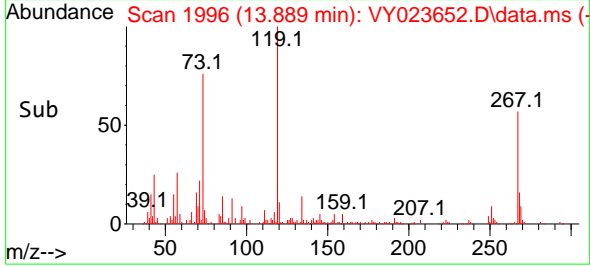
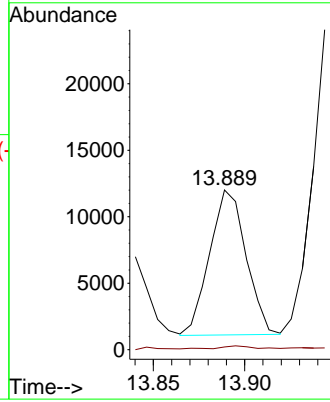


#90
 Hexachloroethane
 Concen: 2.482 ug/l
 RT: 13.889 min Scan# 1996
 Delta R.T. 0.012 min
 Lab File: VY023652.D
 Acq: 03 Nov 2025 12:39

Instrument : MSVOA_Y
 ClientSampleId :



Tgt Ion:117 Resp: 15160
 Ion Ratio Lower Upper
 117 100
 201 2.3 43.8 131.4#



#95
 Naphthalene
 Concen: 14.840 ug/l
 RT: 15.145 min Scan# 2202
 Delta R.T. 0.006 min
 Lab File: VY023652.D
 Acq: 03 Nov 2025 12:39

Tgt Ion:128 Resp: 208401
 Ion Ratio Lower Upper
 128 100
 127 13.2 10.4 15.6
 129 12.0 8.9 13.3

