

Data Path : Z:\voasrv\HPCHEM1\MSVOA\_Y\Data\VY110325\  
 Data File : VY023653.D  
 Acq On : 03 Nov 2025 13:03  
 Operator : SY/MD  
 Sample : Q3516-01  
 Misc : 4.08g/5.0mL/MSVOA\_Y/SOIL/B  
 ALS Vial : 8 Sample Multiplier: 1

Instrument :  
 MSVOA\_Y  
 ClientSampleId :

Quant Time: Nov 04 01:32:43 2025  
 Quant Method : Z:\voasrv\HPCHEM1\MSVOA\_Y\methods\82Y100725S.M  
 Quant Title : SW846 8260  
 QLast Update : Wed Oct 08 05:12:50 2025  
 Response via : Initial Calibration

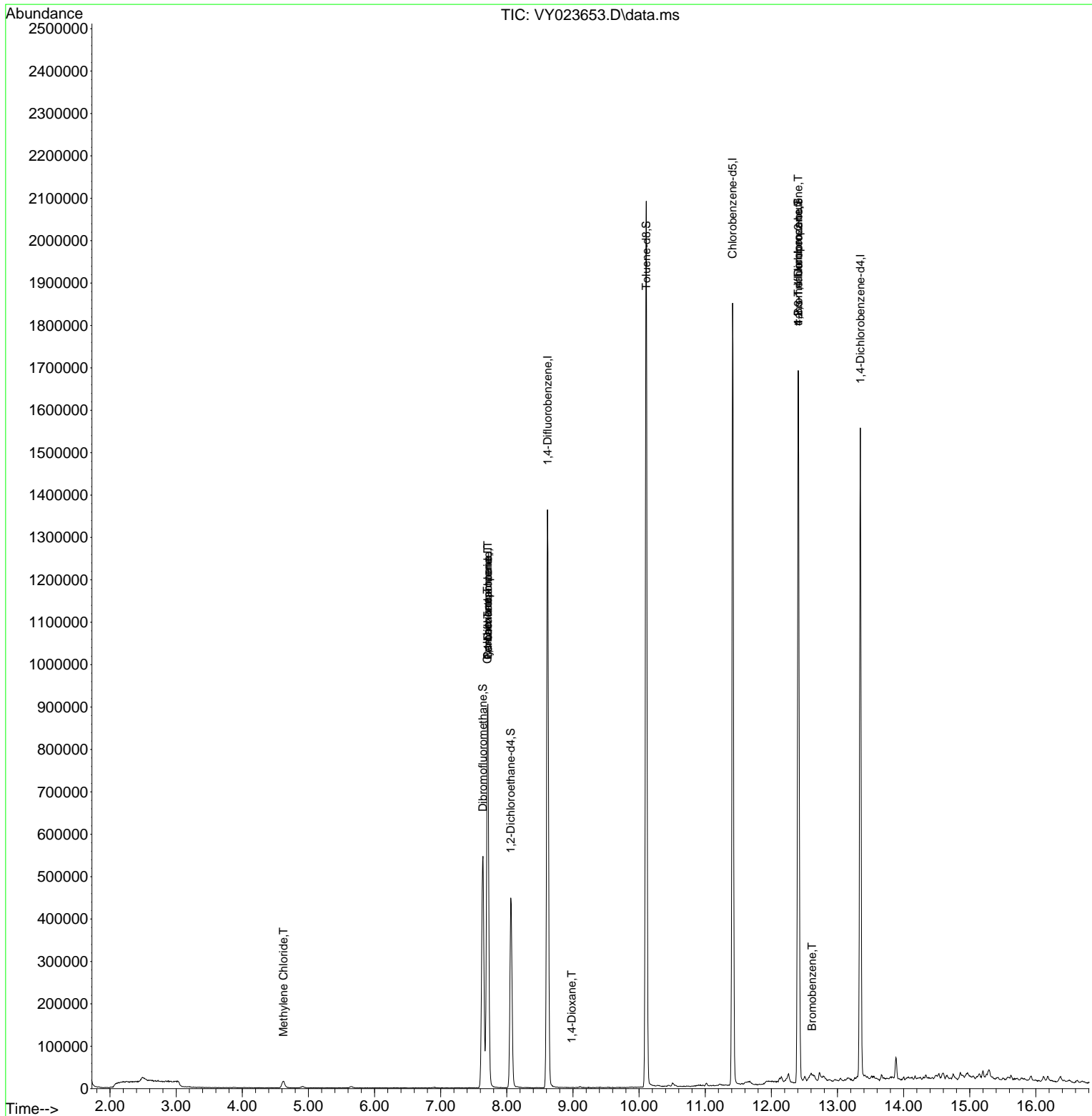
Compound	R.T.	QIon	Response	Conc	Units	Dev(Min)
-----						
Internal Standards						
1) Pentafluorobenzene	7.713	168	782610	50.000	ug/l	0.00
34) 1,4-Difluorobenzene	8.615	114	1265322	50.000	ug/l	0.00
63) Chlorobenzene-d5	11.414	117	1049766	50.000	ug/l	0.00
72) 1,4-Dichlorobenzene-d4	13.346	152	413890	50.000	ug/l	0.00
System Monitoring Compounds						
33) 1,2-Dichloroethane-d4	8.061	65	348248	53.214	ug/l	0.00
Spiked Amount	50.000	Range	50 - 163	Recovery	=	106.420%
35) Dibromofluoromethane	7.640	113	393728	50.642	ug/l	0.00
Spiked Amount	50.000	Range	54 - 147	Recovery	=	101.280%
50) Toluene-d8	10.109	98	1404966	48.524	ug/l	0.00
Spiked Amount	50.000	Range	58 - 134	Recovery	=	97.040%
62) 4-Bromofluorobenzene	12.407	95	417437	43.669	ug/l	0.00
Spiked Amount	50.000	Range	30 - 143	Recovery	=	87.340%
Target Compounds						
					Qvalue	
20) Methylene Chloride	4.622	84	12865	1.527	ug/l	91
31) Cyclohexane	7.707	56	13004	1.194	ug/l #	15
36) 1,1-Dichloropropene	7.713	75	48616	4.723	ug/l #	48
38) Carbon Tetrachloride	7.713	117	69973	5.606	ug/l #	15
49) 1,4-Dioxane	8.981	88	66	1.250	ug/l #	1
76) 1,2,3-Trichloropropane	12.407	75	202567	55.473	ug/l #	100
77) Bromobenzene	12.615	156	20140	2.777	ug/l #	1
81) trans-1,4-Dichloro-2-b...	12.407	75	202567	136.031	ug/l #	15
-----						

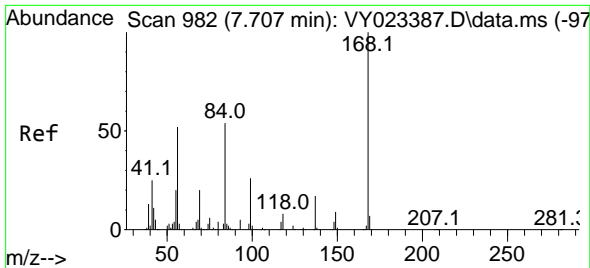
(#) = qualifier out of range (m) = manual integration (+) = signals summed

Data Path : Z:\voasrv\HPCHEM1\MSVOA\_Y\Data\VY110325\  
 Data File : VY023653.D  
 Acq On : 03 Nov 2025 13:03  
 Operator : SY/MD  
 Sample : Q3516-01  
 Misc : 4.08g/5.0mL/MSVOA\_Y/SOIL/B  
 ALS Vial : 8 Sample Multiplier: 1

Instrument :  
 MSVOA\_Y  
 ClientSampleId :

Quant Time: Nov 04 01:32:43 2025  
 Quant Method : Z:\voasrv\HPCHEM1\MSVOA\_Y\methods\82Y100725S.M  
 Quant Title : SW846 8260  
 QLast Update : Wed Oct 08 05:12:50 2025  
 Response via : Initial Calibration

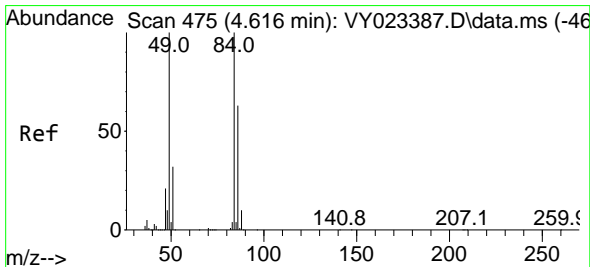
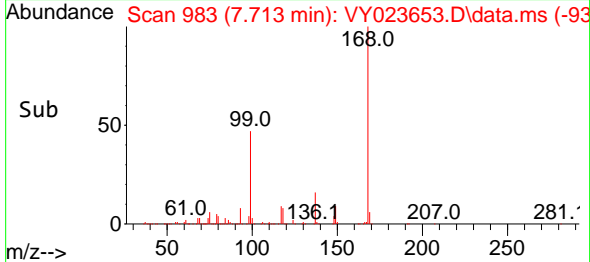
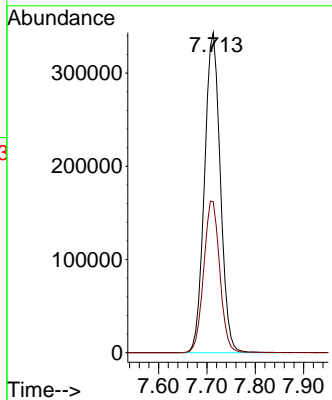
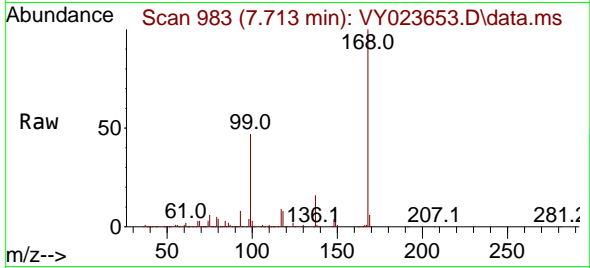




#1  
 Pentafluorobenzene  
 Concen: 50.000 ug/l  
 RT: 7.713 min Scan# 91  
 Delta R.T. 0.006 min  
 Lab File: VY023653.D  
 Acq: 03 Nov 2025 13:03

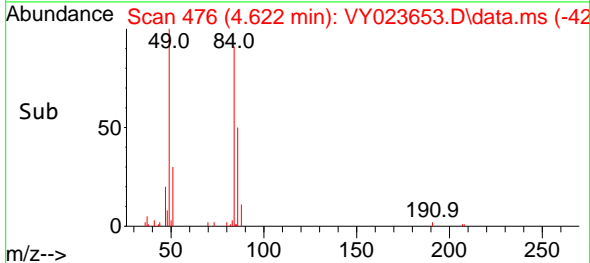
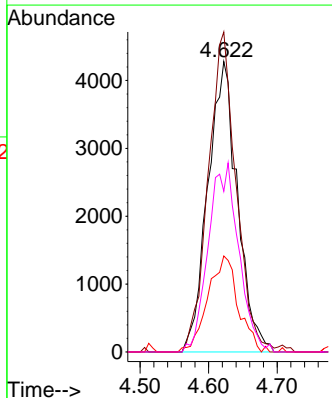
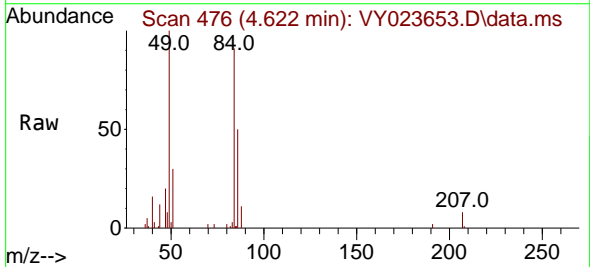
Instrument :  
 MSVOA\_Y  
 ClientSampleId :

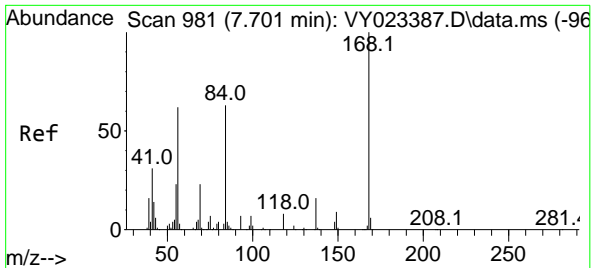
Tgt Ion:168 Resp: 782610  
 Ion Ratio Lower Upper  
 168 100  
 99 47.2 39.7 59.5



#20  
 Methylene Chloride  
 Concen: 1.527 ug/l  
 RT: 4.622 min Scan# 476  
 Delta R.T. 0.006 min  
 Lab File: VY023653.D  
 Acq: 03 Nov 2025 13:03

Tgt Ion: 84 Resp: 12865  
 Ion Ratio Lower Upper  
 84 100  
 49 110.2 80.2 120.4  
 51 33.1 25.9 38.9  
 86 55.3 50.6 75.8

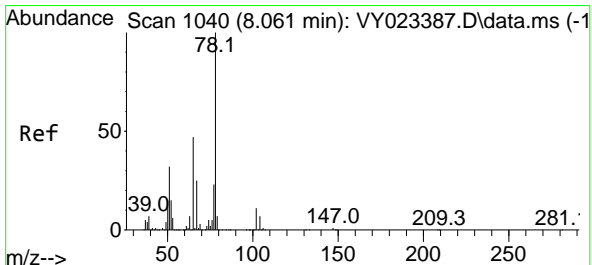
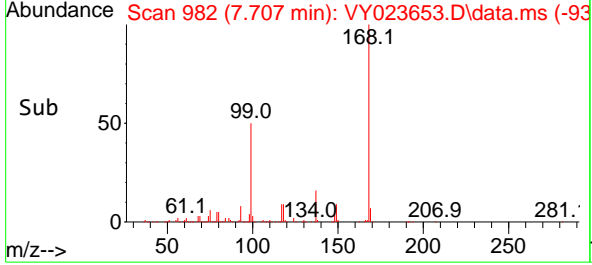
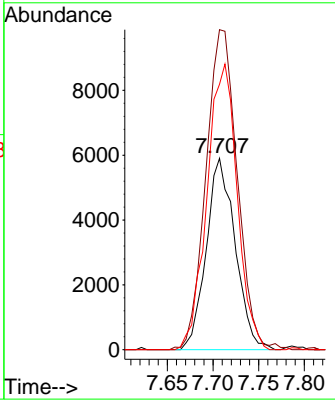
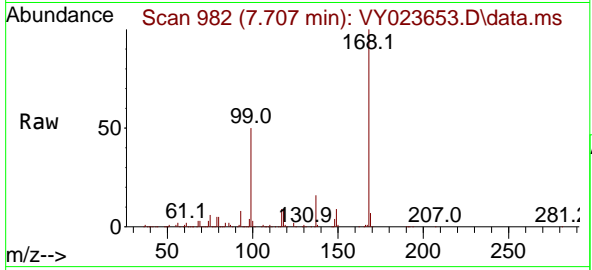




#31  
 Cyclohexane  
 Concen: 1.194 ug/l  
 RT: 7.707 min Scan# 981  
 Delta R.T. 0.006 min  
 Lab File: VY023653.D  
 Acq: 03 Nov 2025 13:03

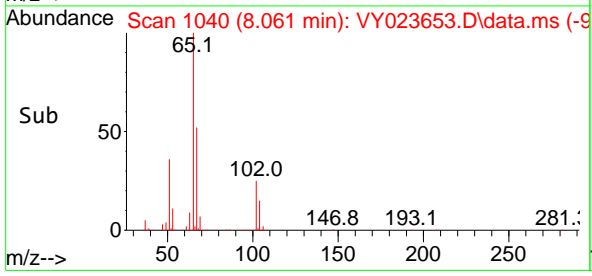
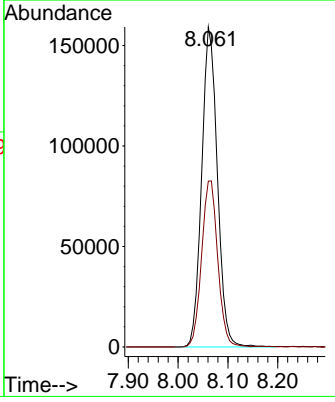
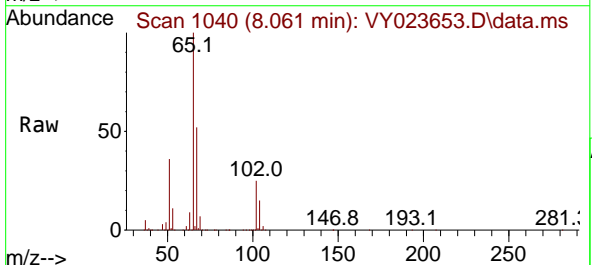
Instrument : MSVOA\_Y  
 ClientSampleId :

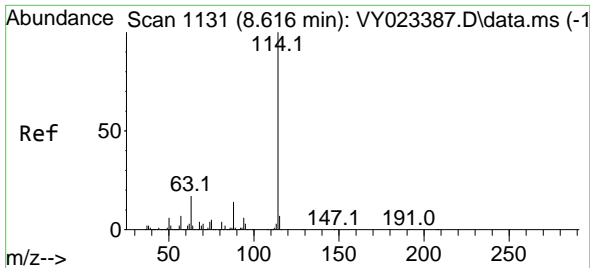
Tgt Ion	Resp	Lower	Upper
56	13004		
Ion Ratio			
56	100		
69	165.8	30.0	45.0#
84	138.7	81.2	121.8#



#33  
 1,2-Dichloroethane-d4  
 Concen: 53.214 ug/l  
 RT: 8.061 min Scan# 1040  
 Delta R.T. -0.000 min  
 Lab File: VY023653.D  
 Acq: 03 Nov 2025 13:03

Tgt Ion	Resp	Lower	Upper
65	348248		
Ion Ratio			
65	100		
67	53.4	0.0	105.8



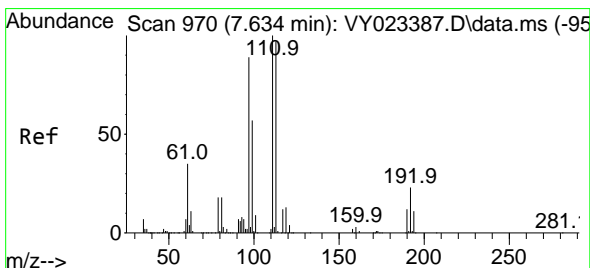
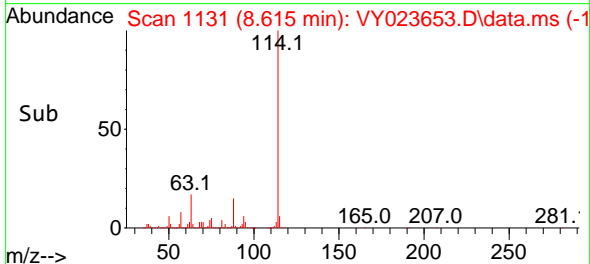
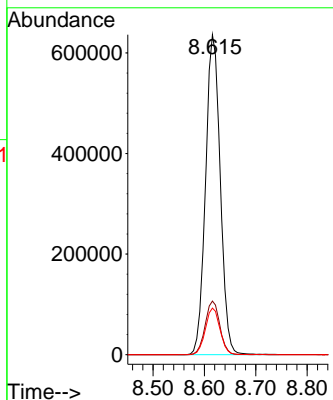
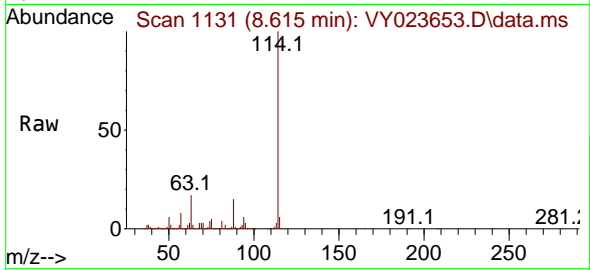


#34  
 1,4-Difluorobenzene  
 Concen: 50.000 ug/l  
 RT: 8.615 min Scan# 1131  
 Delta R.T. -0.000 min  
 Lab File: VY023653.D  
 Acq: 03 Nov 2025 13:03

Instrument : MSVOA\_Y  
 ClientSampleId :

Tgt Ion:114 Resp: 1265322

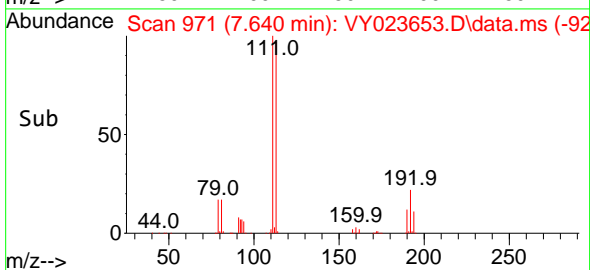
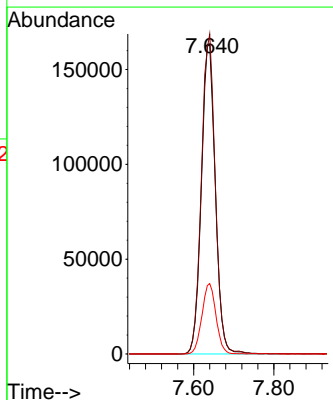
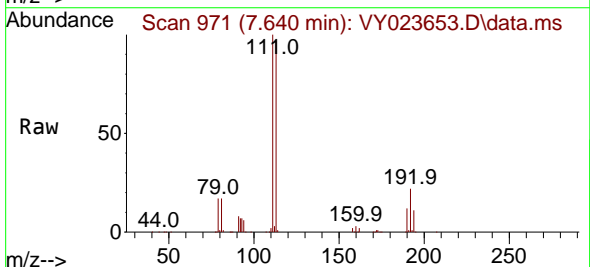
Ion	Ratio	Lower	Upper
114	100		
63	16.8	0.0	34.2
88	14.6	0.0	28.4

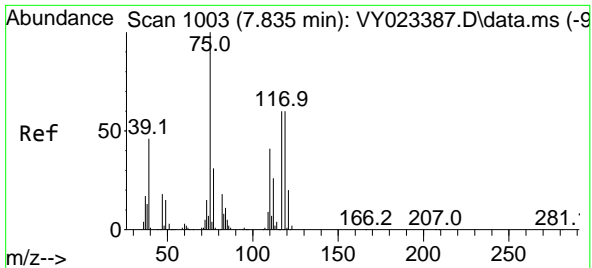


#35  
 Dibromofluoromethane  
 Concen: 50.642 ug/l  
 RT: 7.640 min Scan# 971  
 Delta R.T. 0.006 min  
 Lab File: VY023653.D  
 Acq: 03 Nov 2025 13:03

Tgt Ion:113 Resp: 393728

Ion	Ratio	Lower	Upper
113	100		
111	102.9	81.8	122.6
192	22.9	18.0	27.0

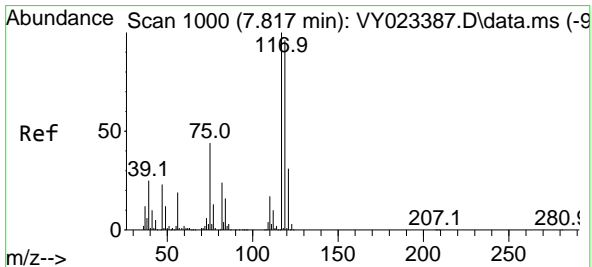
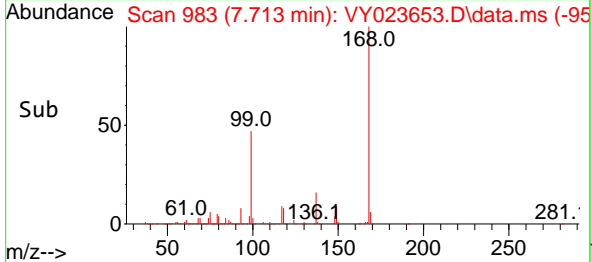
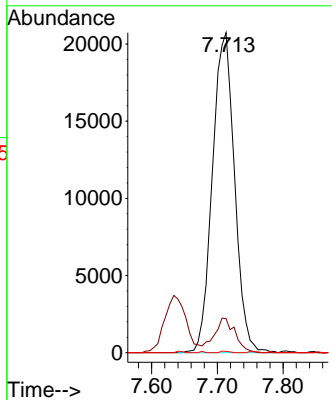
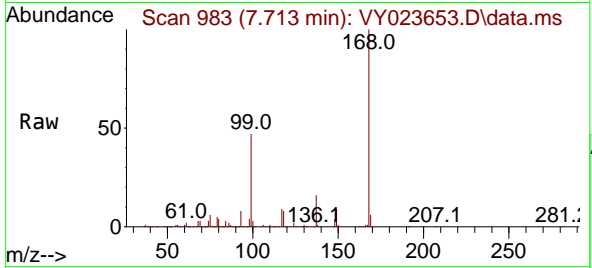




#36  
 1,1-Dichloropropene  
 Concen: 4.723 ug/l  
 RT: 7.713 min Scan# 983  
 Delta R.T. -0.122 min  
 Lab File: VY023653.D  
 Acq: 03 Nov 2025 13:03

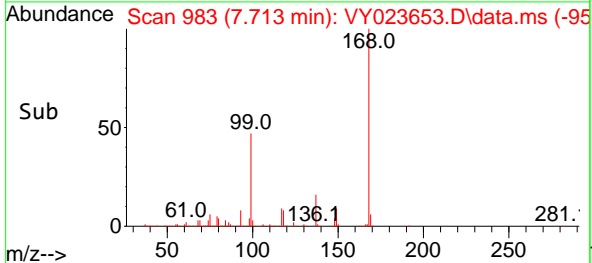
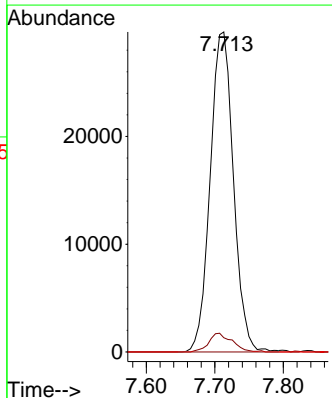
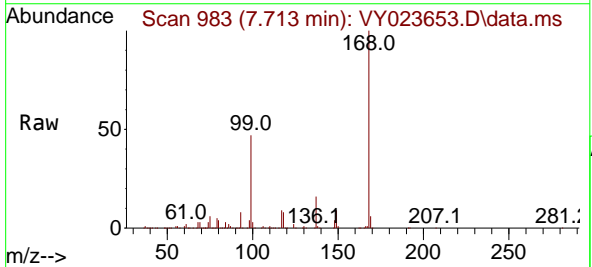
Instrument : MSVOA\_Y  
 ClientSampleId :

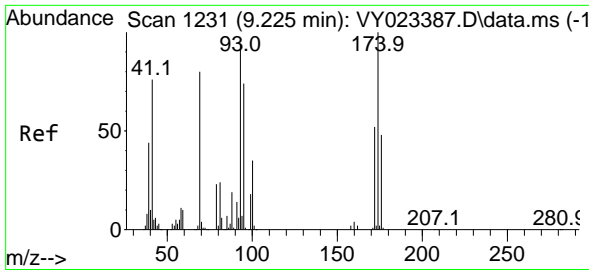
Tgt Ion	Resp	Lower	Upper
75	48616		
75	100		
110	10.1	19.9	59.7#
77	0.2	25.0	37.6#



#38  
 Carbon Tetrachloride  
 Concen: 5.606 ug/l  
 RT: 7.713 min Scan# 983  
 Delta R.T. -0.104 min  
 Lab File: VY023653.D  
 Acq: 03 Nov 2025 13:03

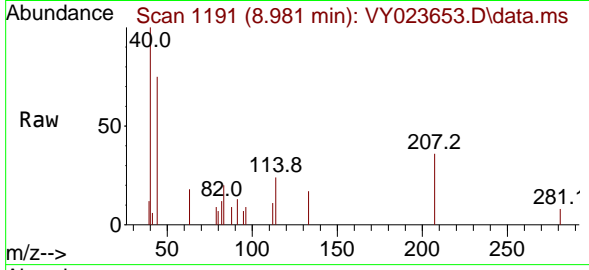
Tgt Ion	Resp	Lower	Upper
117	69973		
117	100		
119	4.5	76.8	115.2#
121	0.0	24.5	36.7#



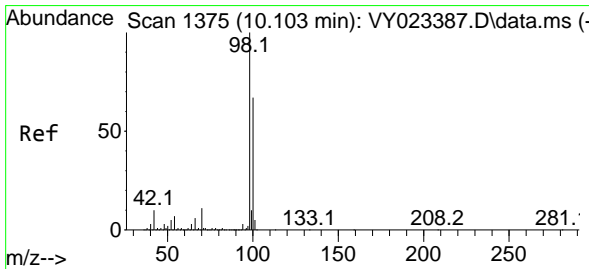
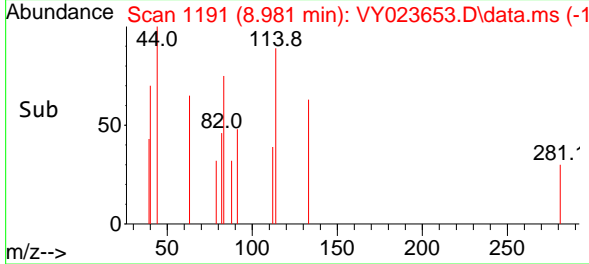
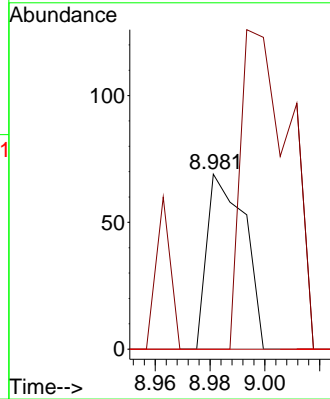


#49  
 1,4-Dioxane  
 Concen: 1.250 ug/l  
 RT: 8.981 min Scan# 1191  
 Delta R.T. -0.244 min  
 Lab File: VY023653.D  
 Acq: 03 Nov 2025 13:03

Instrument :  
 MSVOA\_Y  
 ClientSampleId :

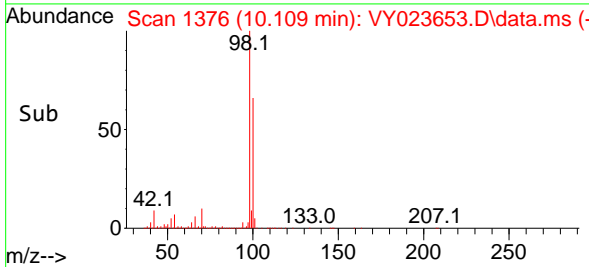
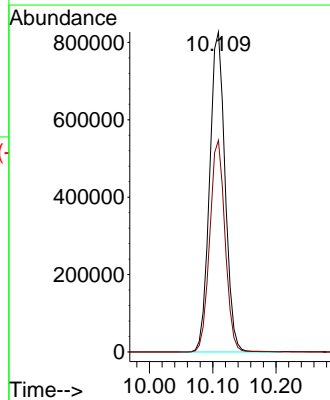
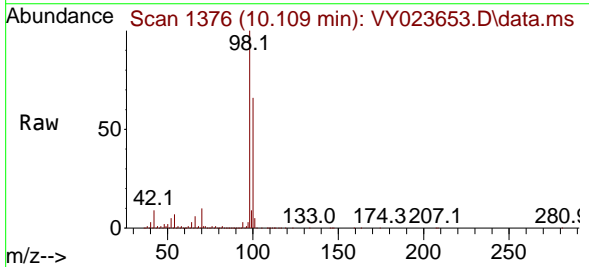


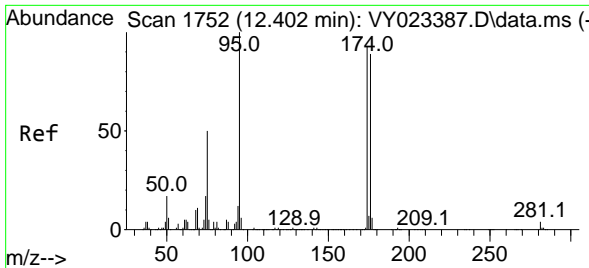
Tgt Ion: 88 Resp: 66  
 Ion Ratio Lower Upper  
 88 100  
 43 233.3 21.8 32.8#  
 58 0.0 46.8 70.2#



#50  
 Toluene-d8  
 Concen: 48.524 ug/l  
 RT: 10.109 min Scan# 1376  
 Delta R.T. 0.006 min  
 Lab File: VY023653.D  
 Acq: 03 Nov 2025 13:03

Tgt Ion: 98 Resp: 1404966  
 Ion Ratio Lower Upper  
 98 100  
 100 65.5 53.0 79.4

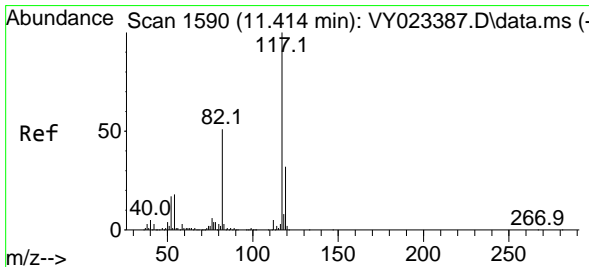
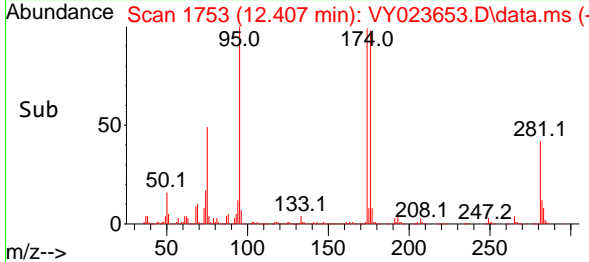
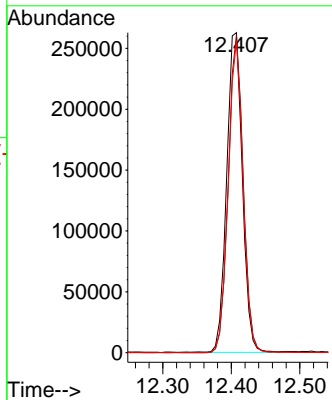
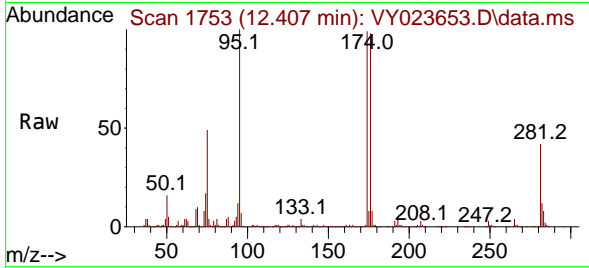




#62  
 4-Bromofluorobenzene  
 Concen: 43.669 ug/l  
 RT: 12.407 min Scan# 1753  
 Delta R.T. 0.006 min  
 Lab File: VY023653.D  
 Acq: 03 Nov 2025 13:03

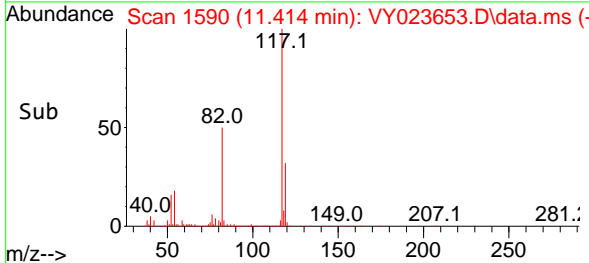
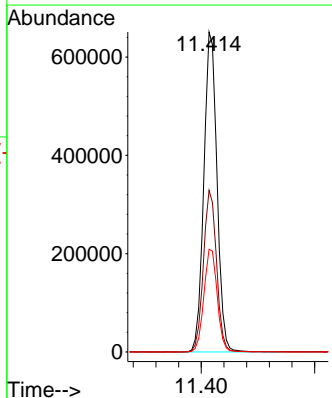
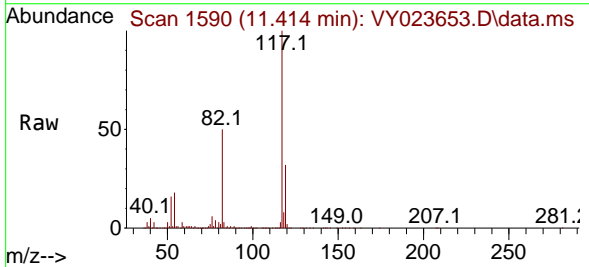
Instrument : MSVOA\_Y  
 ClientSampleId :

Tgt Ion: 95 Resp: 417437  
 Ion Ratio Lower Upper  
 95 100  
 174 95.4 0.0 192.8  
 176 92.7 0.0 187.6

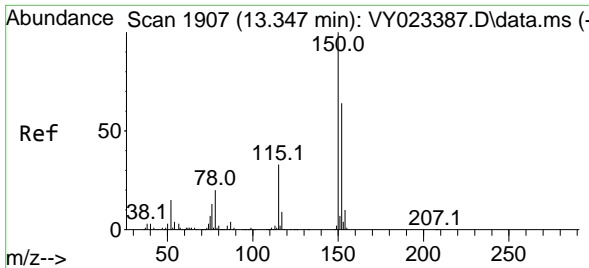


#63  
 Chlorobenzene-d5  
 Concen: 50.000 ug/l  
 RT: 11.414 min Scan# 1590  
 Delta R.T. -0.000 min  
 Lab File: VY023653.D  
 Acq: 03 Nov 2025 13:03

Tgt Ion: 117 Resp: 1049766  
 Ion Ratio Lower Upper  
 117 100  
 82 50.5 41.0 61.4  
 119 32.1 25.6 38.4

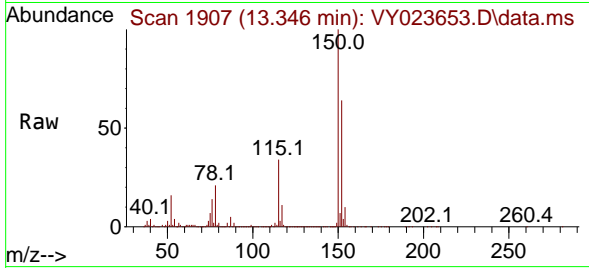




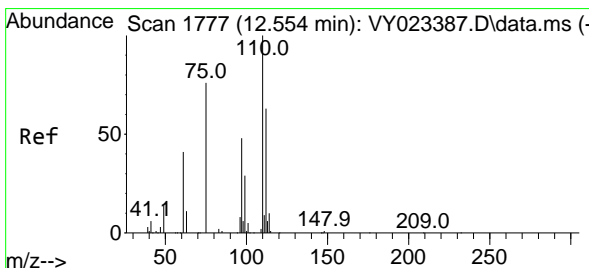
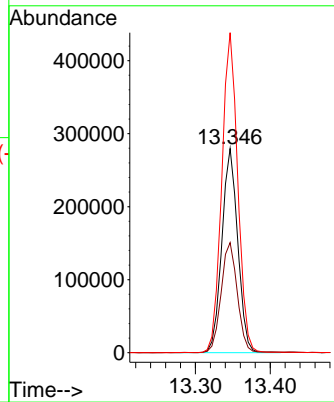
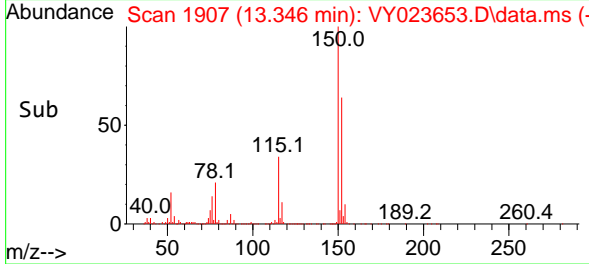


#72  
 1,4-Dichlorobenzene-d4  
 Concen: 50.000 ug/l  
 RT: 13.346 min Scan# 1907  
 Delta R.T. -0.000 min  
 Lab File: VY023653.D  
 Acq: 03 Nov 2025 13:03

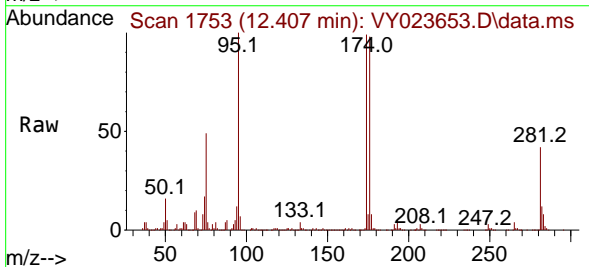
Instrument : MSVOA\_Y  
 ClientSampleId :



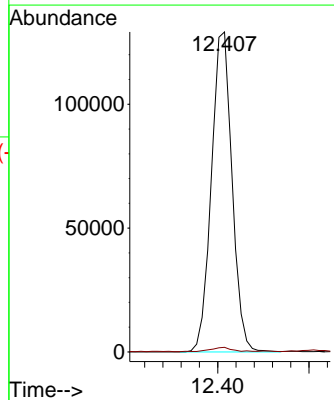
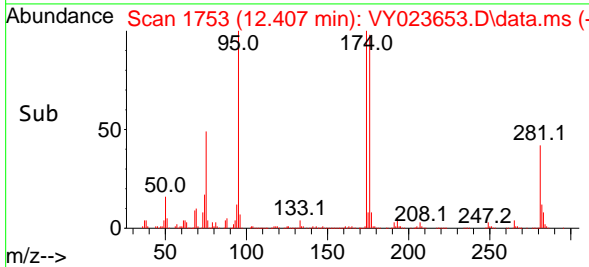
Tgt Ion:152 Resp: 413890  
 Ion Ratio Lower Upper  
 152 100  
 115 54.7 27.1 81.2  
 150 157.3 0.0 347.4

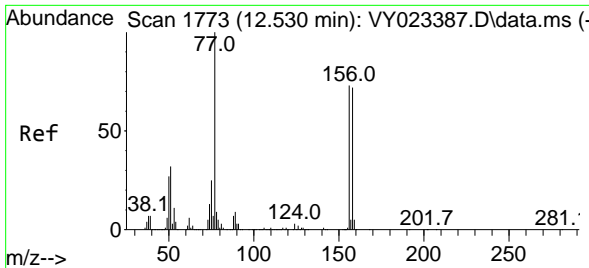


#76  
 1,2,3-Trichloropropane  
 Concen: 55.473 ug/l  
 RT: 12.407 min Scan# 1753  
 Delta R.T. -0.147 min  
 Lab File: VY023653.D  
 Acq: 03 Nov 2025 13:03



Tgt Ion: 75 Resp: 202567  
 Ion Ratio Lower Upper  
 75 100  
 77 1.4 0.0 0.0#



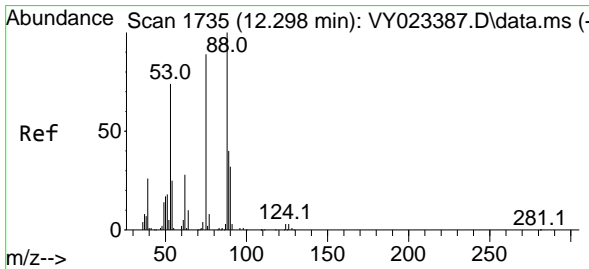
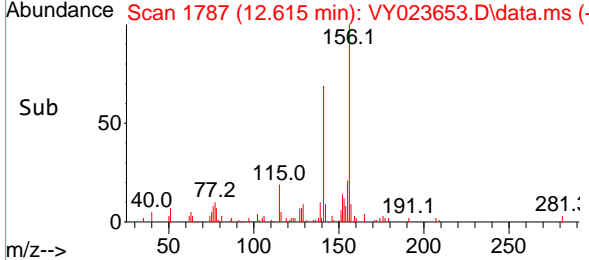
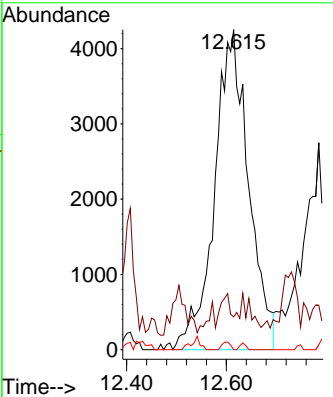
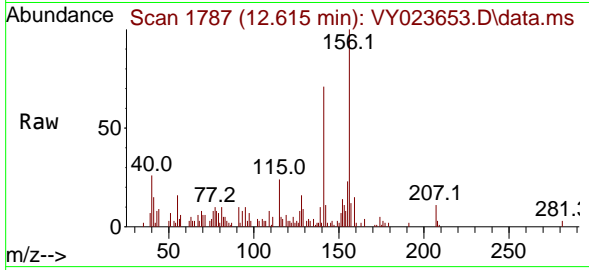


#77  
 Bromobenzene  
 Concen: 2.777 ug/l  
 RT: 12.615 min Scan# 1787  
 Delta R.T. 0.085 min  
 Lab File: VY023653.D  
 Acq: 03 Nov 2025 13:03

Instrument : MSVOA\_Y  
 ClientSampleId :

Tgt Ion:156 Resp: 20140

Ion	Ratio	Lower	Upper
156	100		
77	3.2	76.8	230.5#
158	0.6	49.0	147.2#



#81  
 trans-1,4-Dichloro-2-butene  
 Concen: 136.031 ug/l  
 RT: 12.407 min Scan# 1753  
 Delta R.T. 0.109 min  
 Lab File: VY023653.D  
 Acq: 03 Nov 2025 13:03

Tgt Ion: 75 Resp: 202567

Ion	Ratio	Lower	Upper
75	100		
53	0.2	68.6	102.8#
89	0.1	39.0	58.4#

