

Data Path : Z:\voasrv\HPCHEM1\MSVOA\_Y\Data\VY110325\  
 Data File : VY023656.D  
 Acq On : 03 Nov 2025 14:13  
 Operator : SY/MD  
 Sample : Q3520-01  
 Misc : 7.21g/5.0mL/MSVOA\_Y/SOIL/A  
 ALS Vial : 11 Sample Multiplier: 1

Instrument :  
 MSVOA\_Y  
 ClientSampleId :

Quant Time: Nov 04 01:33:44 2025  
 Quant Method : Z:\voasrv\HPCHEM1\MSVOA\_Y\methods\82Y100725S.M  
 Quant Title : SW846 8260  
 QLast Update : Wed Oct 08 05:12:50 2025  
 Response via : Initial Calibration

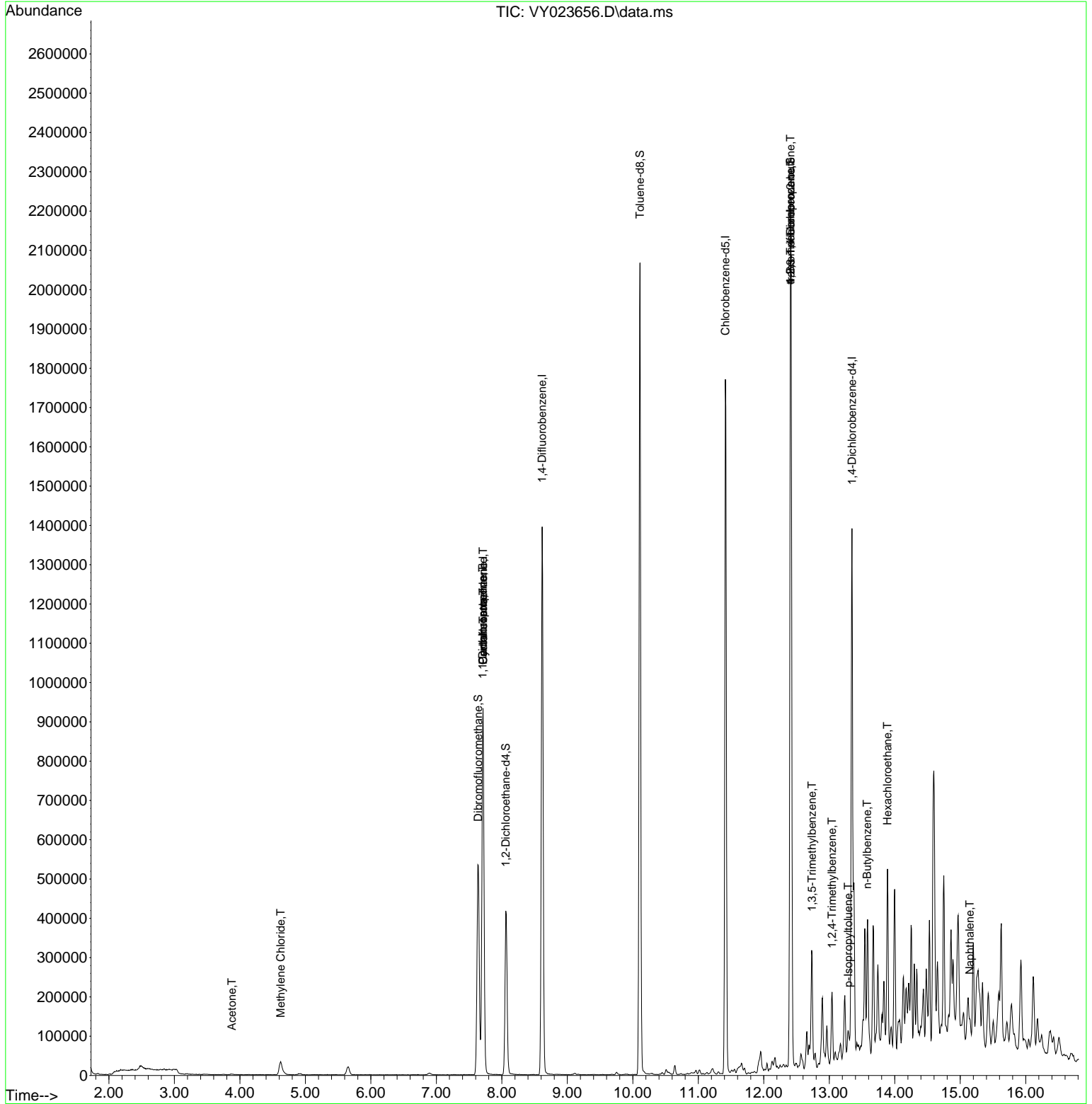
Compound	R.T.	QIon	Response	Conc	Units	Dev(Min)
-----						
Internal Standards						
1) Pentafluorobenzene	7.713	168	780473	50.000	ug/l	0.00
34) 1,4-Difluorobenzene	8.616	114	1262917	50.000	ug/l	0.00
63) Chlorobenzene-d5	11.414	117	1020424	50.000	ug/l	0.00
72) 1,4-Dichlorobenzene-d4	13.347	152	366348	50.000	ug/l	0.00
System Monitoring Compounds						
33) 1,2-Dichloroethane-d4	8.061	65	328437	50.324	ug/l	0.00
Spiked Amount	50.000	Range	50 - 163	Recovery	=	100.640%
35) Dibromofluoromethane	7.640	113	391260	50.420	ug/l	0.00
Spiked Amount	50.000	Range	54 - 147	Recovery	=	100.840%
50) Toluene-d8	10.109	98	1390167	48.104	ug/l	0.00
Spiked Amount	50.000	Range	58 - 134	Recovery	=	96.200%
62) 4-Bromofluorobenzene	12.408	95	387093	40.571	ug/l	0.00
Spiked Amount	50.000	Range	30 - 143	Recovery	=	81.140%
Target Compounds						
						Qvalue
16) Acetone	3.879	43	2045	1.316	ug/l	93
20) Methylene Chloride	4.623	84	26694	3.177	ug/l	96
31) Cyclohexane	7.713	56	12819	1.181	ug/l #	1
36) 1,1-Dichloropropene	7.707	75	49761	4.844	ug/l #	48
38) Carbon Tetrachloride	7.713	117	70610	5.668	ug/l #	16
76) 1,2,3-Trichloropropane	12.408	75	195047	60.346	ug/l #	100
80) 1,3,5-Trimethylbenzene	12.737	105	104005	5.331	ug/l	99
81) trans-1,4-Dichloro-2-b...	12.408	75	195047	147.979	ug/l #	15
84) 1,2,4-Trimethylbenzene	13.042	105	95462	4.903	ug/l	99
86) p-Isopropyltoluene	13.292	119	22067	1.003	ug/l	99
89) n-Butylbenzene	13.578	91	22852	1.192	ug/l #	1
90) Hexachloroethane	13.889	117	16991	3.591	ug/l #	6
95) Naphthalene	15.145	128	13412	1.233	ug/l #	86
-----						

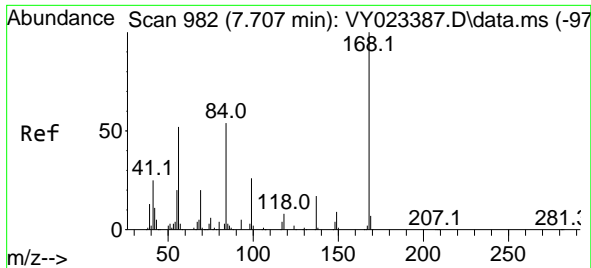
(#) = qualifier out of range (m) = manual integration (+) = signals summed

Data Path : Z:\voasrv\HPCHEM1\MSVOA\_Y\Data\VY110325\  
 Data File : VY023656.D  
 Acq On : 03 Nov 2025 14:13  
 Operator : SY/MD  
 Sample : Q3520-01  
 Misc : 7.21g/5.0mL/MSVOA\_Y/SOIL/A  
 ALS Vial : 11 Sample Multiplier: 1

Instrument :  
 MSVOA\_Y  
 ClientSampleId :

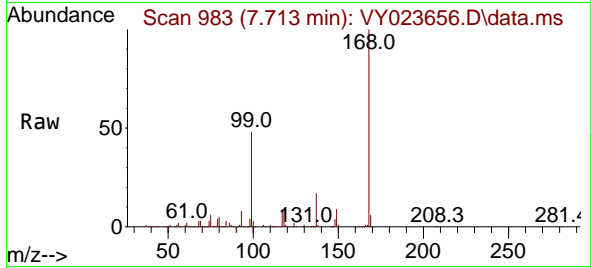
Quant Time: Nov 04 01:33:44 2025  
 Quant Method : Z:\voasrv\HPCHEM1\MSVOA\_Y\methods\82Y100725S.M  
 Quant Title : SW846 8260  
 QLast Update : Wed Oct 08 05:12:50 2025  
 Response via : Initial Calibration



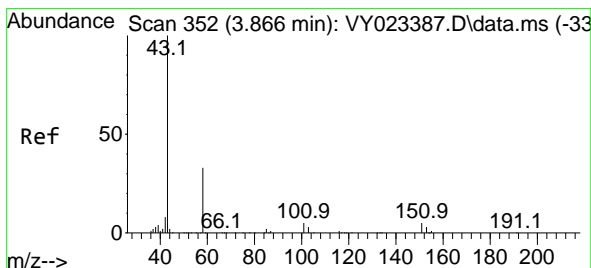
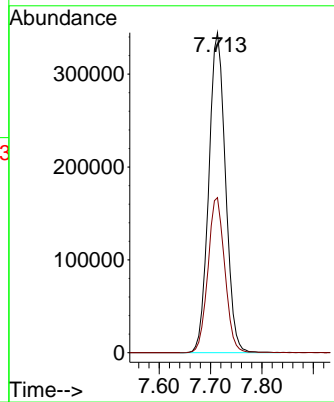
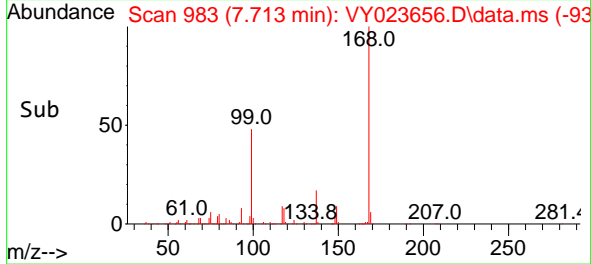


#1  
 Pentafluorobenzene  
 Concen: 50.000 ug/l  
 RT: 7.713 min Scan# 91  
 Delta R.T. 0.006 min  
 Lab File: VY023656.D  
 Acq: 03 Nov 2025 14:13

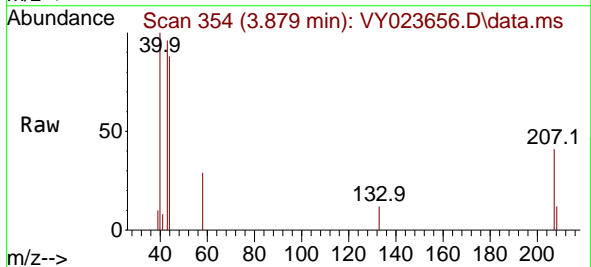
Instrument :  
 MSVOA\_Y  
 ClientSampleId :



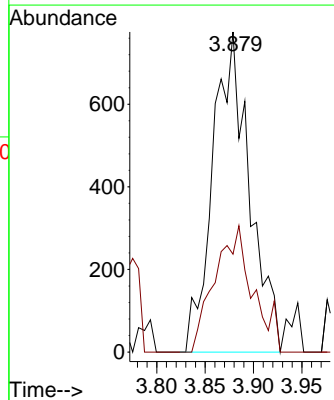
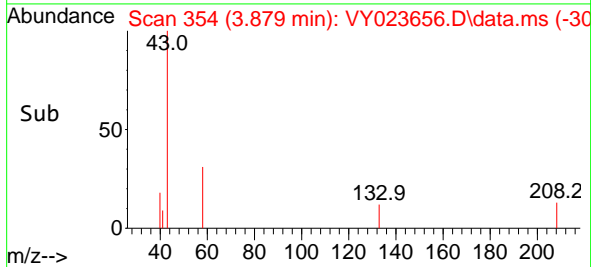
Tgt Ion:168 Resp: 780473  
 Ion Ratio Lower Upper  
 168 100  
 99 48.4 39.7 59.5

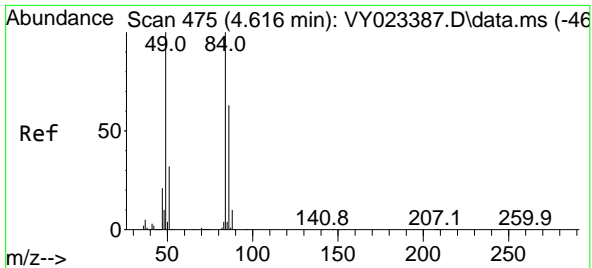


#16  
 Acetone  
 Concen: 1.316 ug/l  
 RT: 3.879 min Scan# 354  
 Delta R.T. 0.012 min  
 Lab File: VY023656.D  
 Acq: 03 Nov 2025 14:13



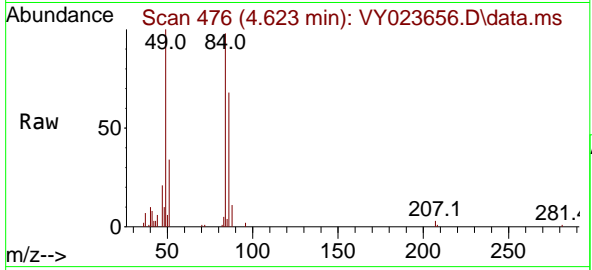
Tgt Ion: 43 Resp: 2045  
 Ion Ratio Lower Upper  
 43 100  
 58 30.6 27.7 41.5





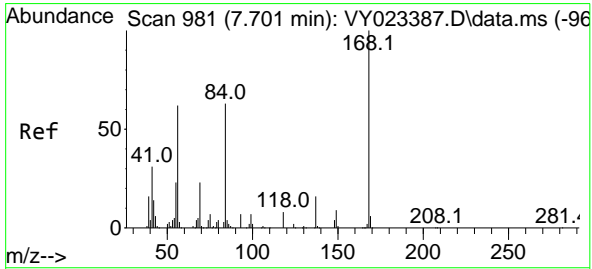
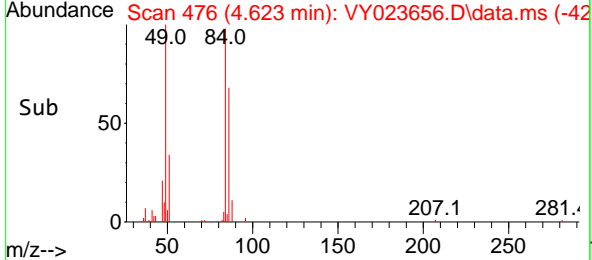
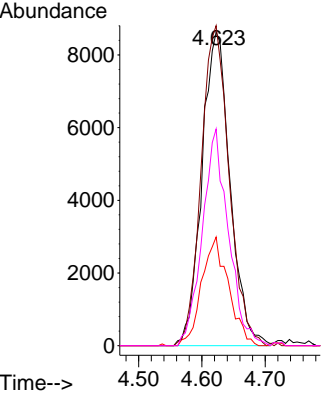
#20  
 Methylene Chloride  
 Concen: 3.177 ug/l  
 RT: 4.623 min Scan# 41  
 Delta R.T. 0.006 min  
 Lab File: VY023656.D  
 Acq: 03 Nov 2025 14:13

Instrument :  
 MSVOA\_Y  
 ClientSampleId :

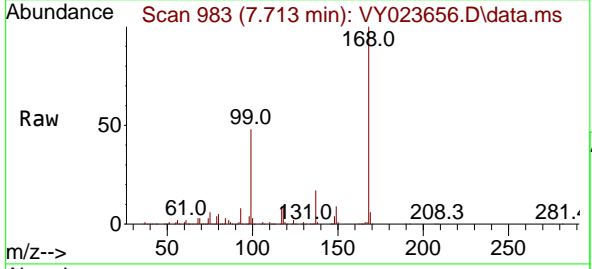


Tgt Ion: 84 Resp: 26694

Ion	Ratio	Lower	Upper
84	100		
49	102.1	80.2	120.4
51	34.7	25.9	38.9
86	69.1	50.6	75.8

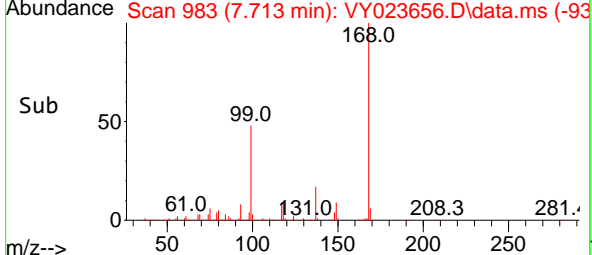
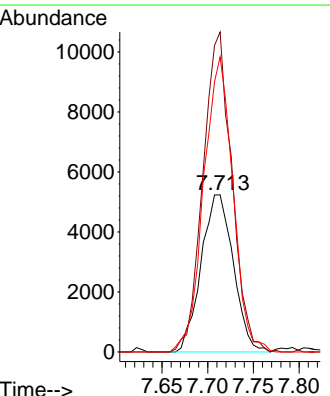


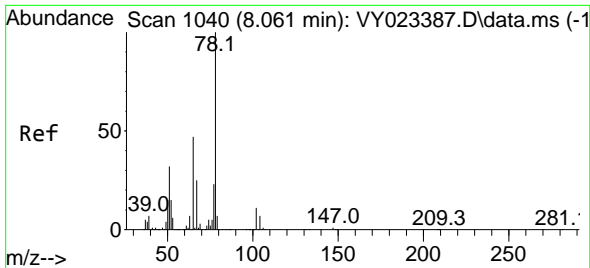
#31  
 Cyclohexane  
 Concen: 1.181 ug/l  
 RT: 7.713 min Scan# 983  
 Delta R.T. 0.012 min  
 Lab File: VY023656.D  
 Acq: 03 Nov 2025 14:13



Tgt Ion: 56 Resp: 12819

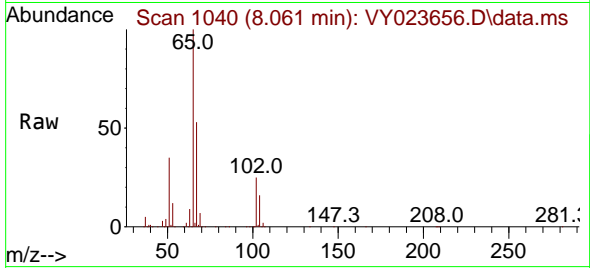
Ion	Ratio	Lower	Upper
56	100		
69	203.6	30.0	45.0#
84	187.7	81.2	121.8#



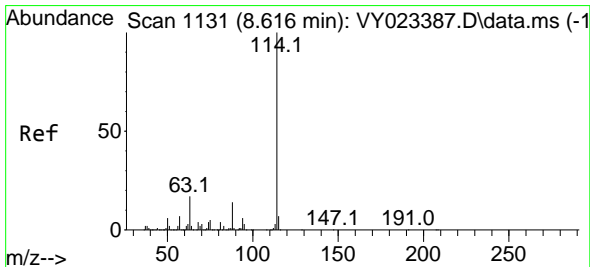
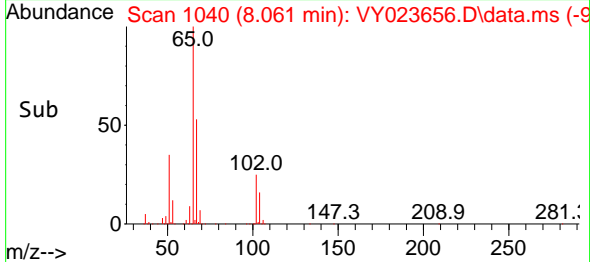
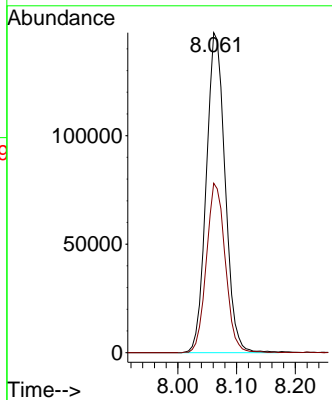


#33  
 1,2-Dichloroethane-d4  
 Concen: 50.324 ug/l  
 RT: 8.061 min Scan# 1040  
 Delta R.T. 0.000 min  
 Lab File: VY023656.D  
 Acq: 03 Nov 2025 14:13

Instrument :  
 MSVOA\_Y  
 ClientSampleId :

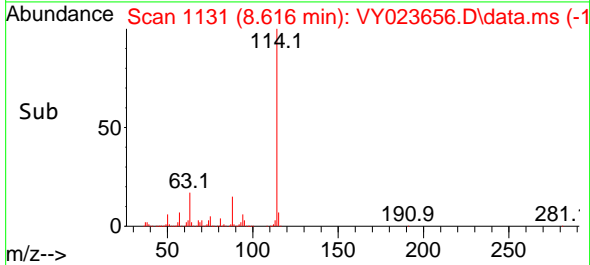
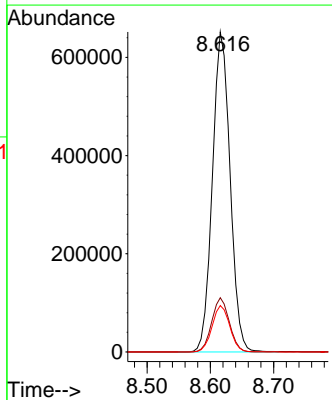
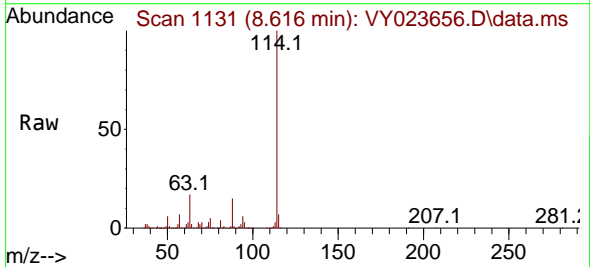


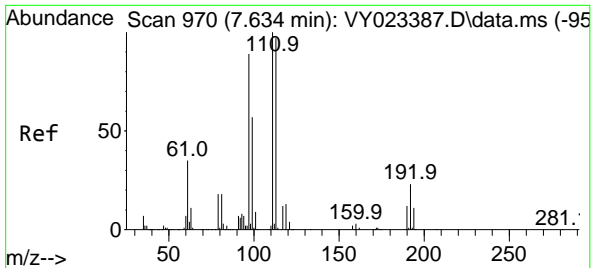
Tgt Ion: 65 Resp: 328437  
 Ion Ratio Lower Upper  
 65 100  
 67 53.1 0.0 105.8



#34  
 1,4-Difluorobenzene  
 Concen: 50.000 ug/l  
 RT: 8.616 min Scan# 1131  
 Delta R.T. 0.000 min  
 Lab File: VY023656.D  
 Acq: 03 Nov 2025 14:13

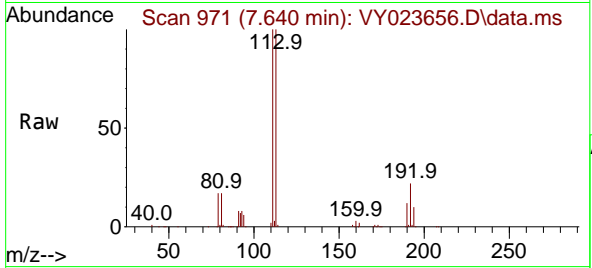
Tgt Ion: 114 Resp: 1262917  
 Ion Ratio Lower Upper  
 114 100  
 63 16.9 0.0 34.2  
 88 14.5 0.0 28.4





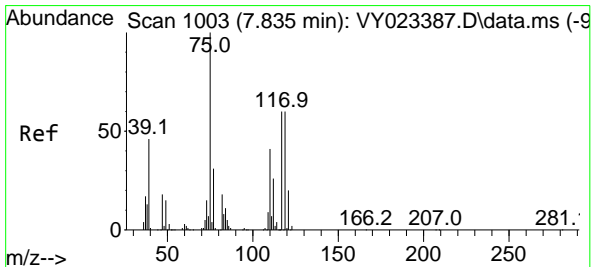
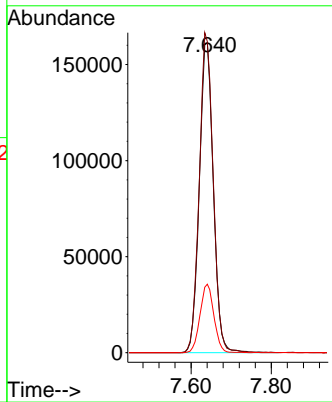
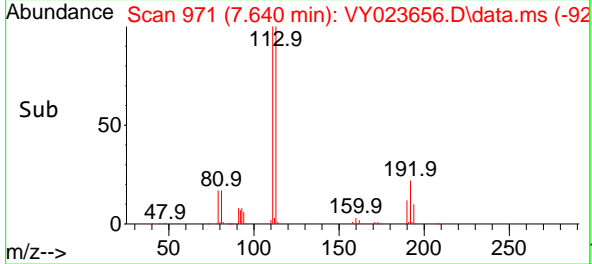
#35  
 Dibromofluoromethane  
 Concen: 50.420 ug/l  
 RT: 7.640 min Scan# 91  
 Delta R.T. 0.006 min  
 Lab File: VY023656.D  
 Acq: 03 Nov 2025 14:13

Instrument :  
 MSVOA\_Y  
 ClientSampleId :

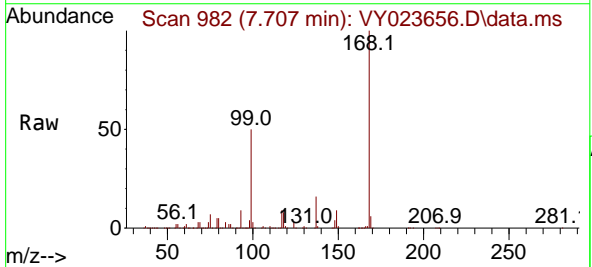


Tgt Ion:113 Resp: 391260

Ion	Ratio	Lower	Upper
113	100		
111	102.4	81.8	122.6
192	21.9	18.0	27.0

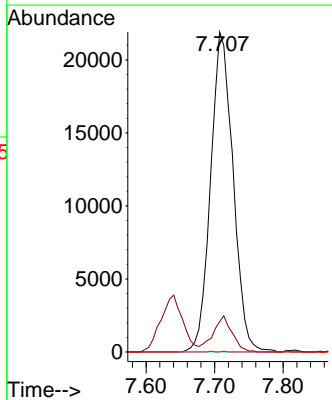
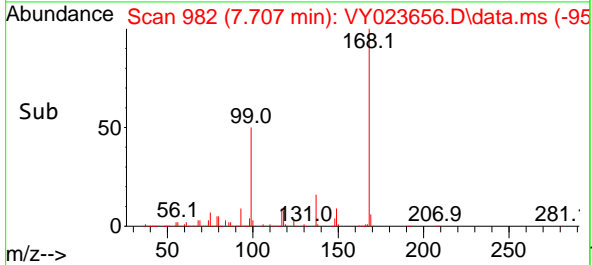


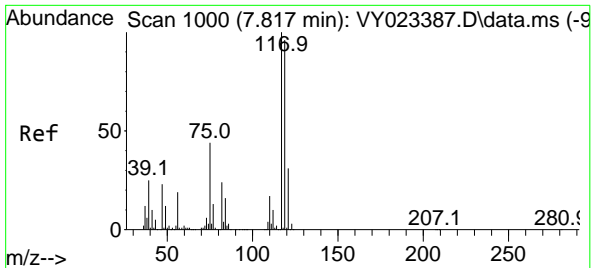
#36  
 1,1-Dichloropropene  
 Concen: 4.844 ug/l  
 RT: 7.707 min Scan# 982  
 Delta R.T. -0.128 min  
 Lab File: VY023656.D  
 Acq: 03 Nov 2025 14:13



Tgt Ion: 75 Resp: 49761

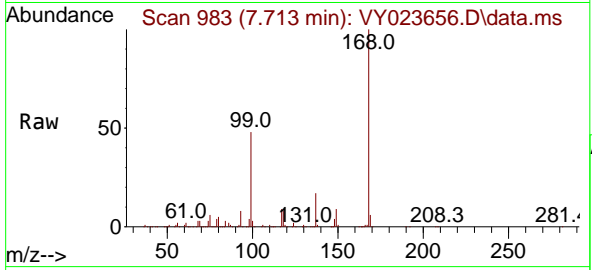
Ion	Ratio	Lower	Upper
75	100		
110	9.6	19.9	59.7#
77	0.0	25.0	37.6#



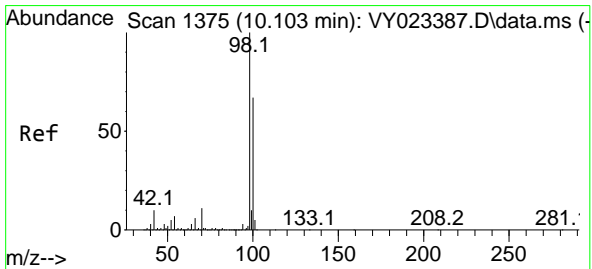
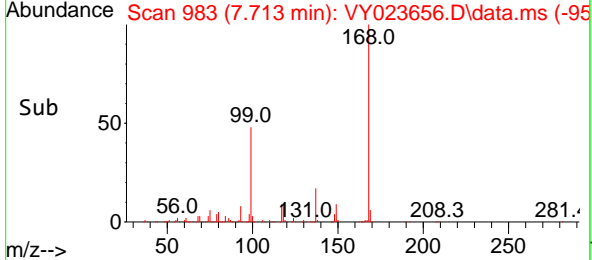
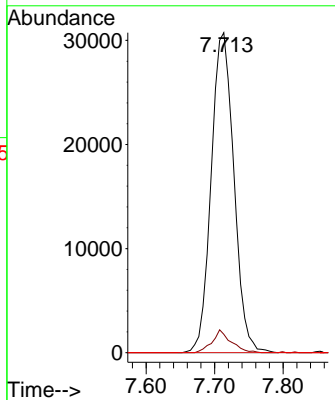


#38  
 Carbon Tetrachloride  
 Concen: 5.668 ug/l  
 RT: 7.713 min Scan# 91  
 Delta R.T. -0.104 min  
 Lab File: VY023656.D  
 Acq: 03 Nov 2025 14:13

Instrument :  
 MSVOA\_Y  
 ClientSampled :

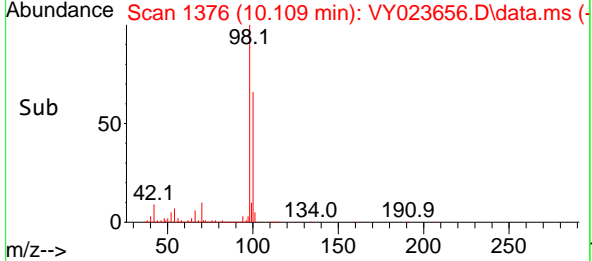
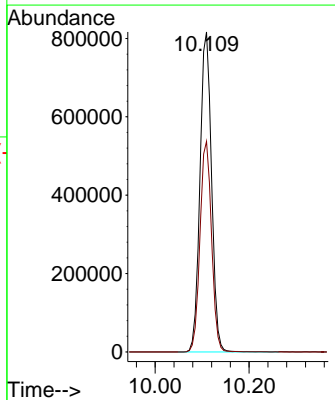
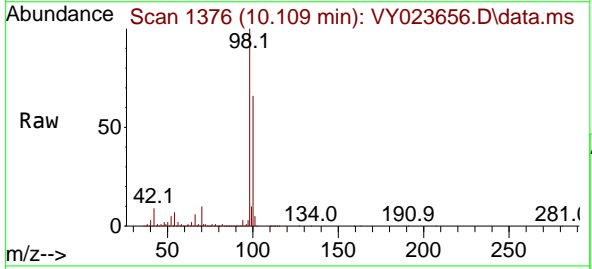


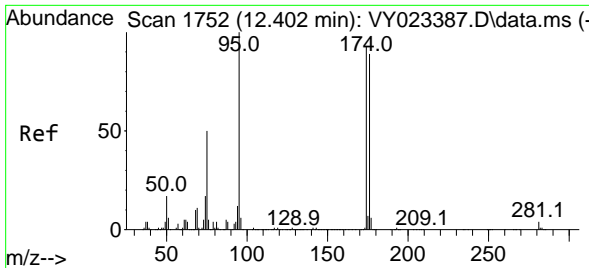
Tgt Ion:117 Resp: 70610  
 Ion Ratio Lower Upper  
 117 100  
 119 5.8 76.8 115.2#  
 121 0.0 24.5 36.7#



#50  
 Toluene-d8  
 Concen: 48.104 ug/l  
 RT: 10.109 min Scan# 1376  
 Delta R.T. 0.006 min  
 Lab File: VY023656.D  
 Acq: 03 Nov 2025 14:13

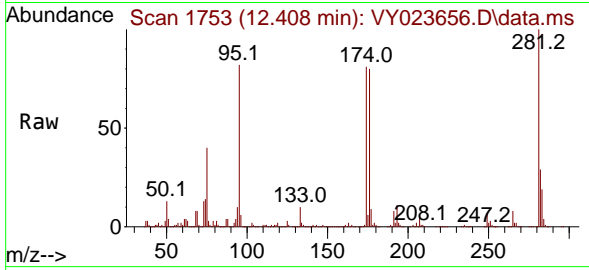
Tgt Ion: 98 Resp: 1390167  
 Ion Ratio Lower Upper  
 98 100  
 100 65.9 53.0 79.4



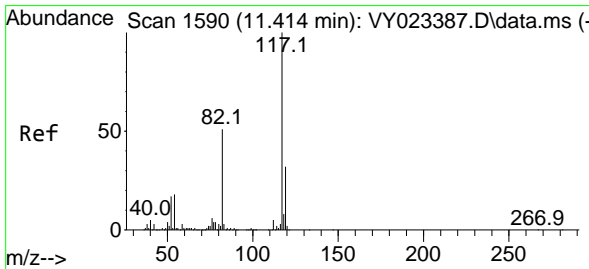
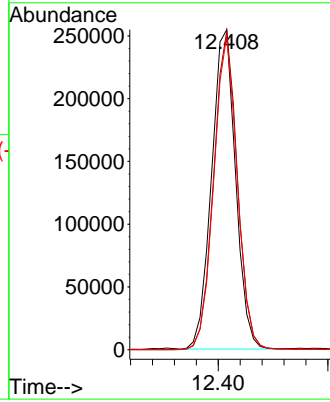
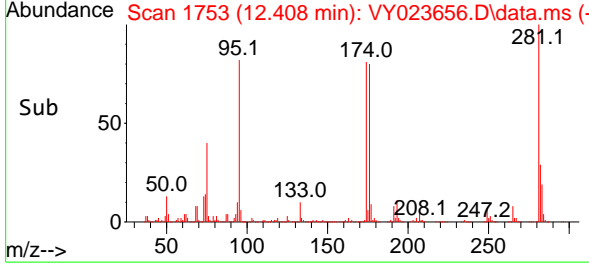


#62  
 4-Bromofluorobenzene  
 Concen: 40.571 ug/l  
 RT: 12.408 min Scan# 11  
 Delta R.T. 0.006 min  
 Lab File: VY023656.D  
 Acq: 03 Nov 2025 14:13

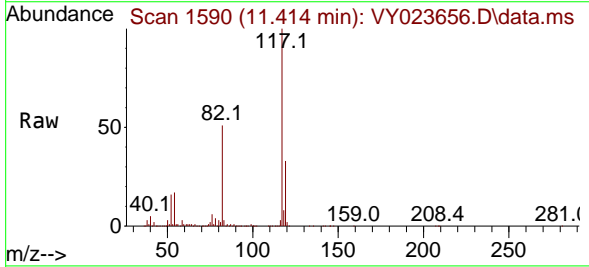
Instrument :  
 MSVOA\_Y  
 ClientSampleId :



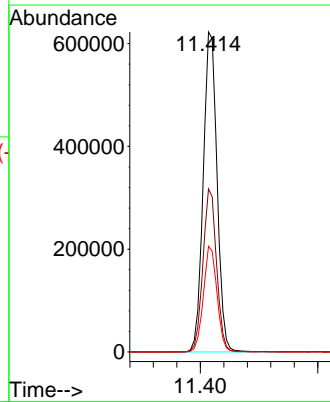
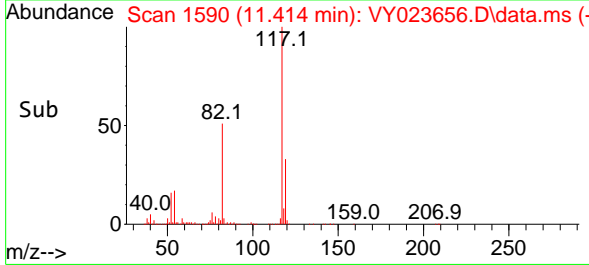
Tgt Ion: 95 Resp: 387093  
 Ion Ratio Lower Upper  
 95 100  
 174 98.4 0.0 192.8  
 176 96.2 0.0 187.6



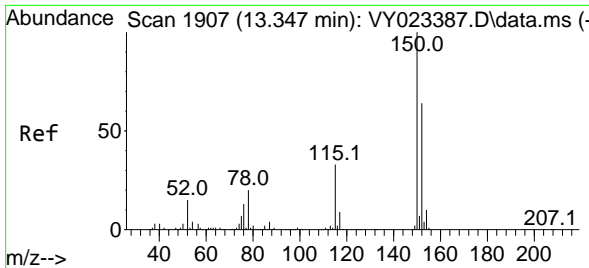
#63  
 Chlorobenzene-d5  
 Concen: 50.000 ug/l  
 RT: 11.414 min Scan# 1590  
 Delta R.T. 0.000 min  
 Lab File: VY023656.D  
 Acq: 03 Nov 2025 14:13



Tgt Ion: 117 Resp: 1020424  
 Ion Ratio Lower Upper  
 117 100  
 82 50.9 41.0 61.4  
 119 33.1 25.6 38.4

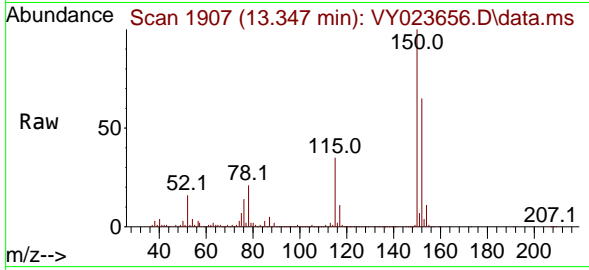




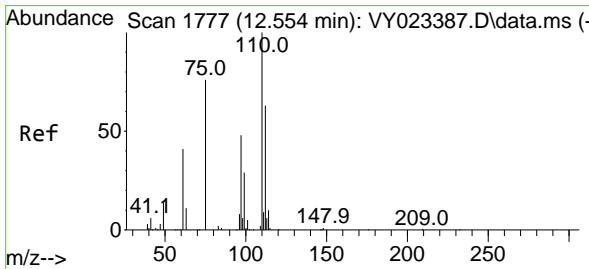
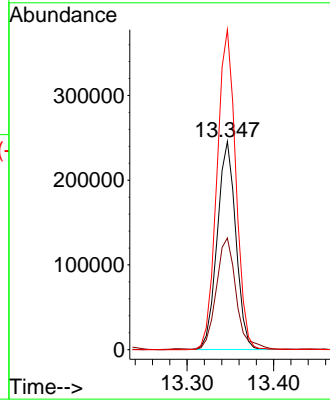
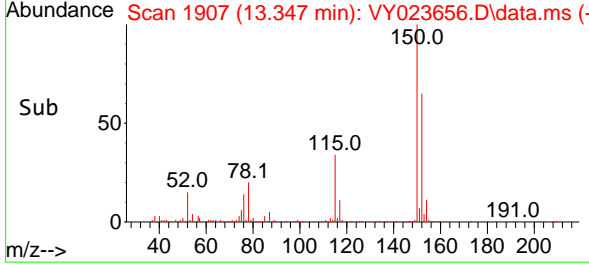


#72  
 1,4-Dichlorobenzene-d4  
 Concen: 50.000 ug/l  
 RT: 13.347 min Scan# 1907  
 Delta R.T. 0.000 min  
 Lab File: VY023656.D  
 Acq: 03 Nov 2025 14:13

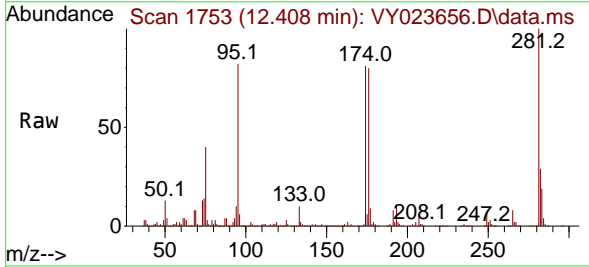
Instrument : MSVOA\_Y  
 ClientSampleId :



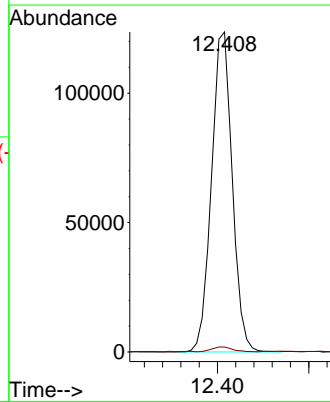
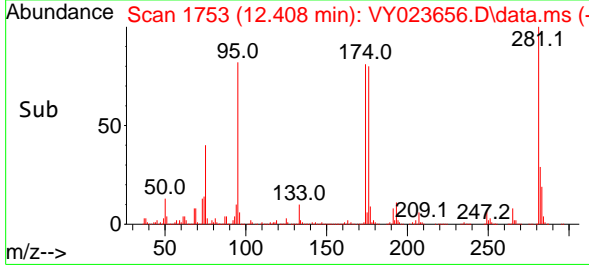
Tgt Ion:152 Resp: 366348  
 Ion Ratio Lower Upper  
 152 100  
 115 57.1 27.1 81.2  
 150 156.3 0.0 347.4

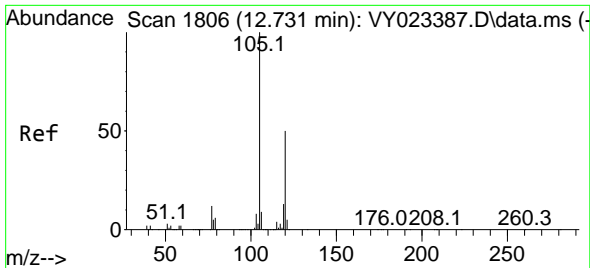


#76  
 1,2,3-Trichloropropane  
 Concen: 60.346 ug/l  
 RT: 12.408 min Scan# 1753  
 Delta R.T. -0.146 min  
 Lab File: VY023656.D  
 Acq: 03 Nov 2025 14:13



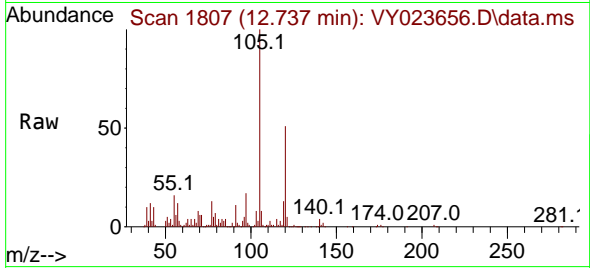
Tgt Ion: 75 Resp: 195047  
 Ion Ratio Lower Upper  
 75 100  
 77 1.5 0.0 0.0#



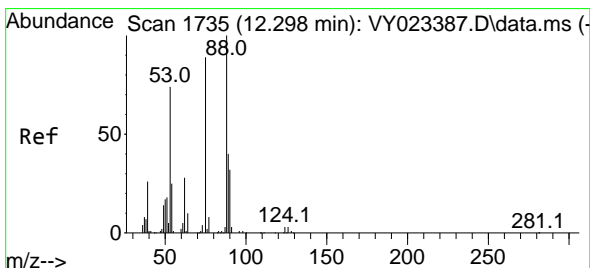
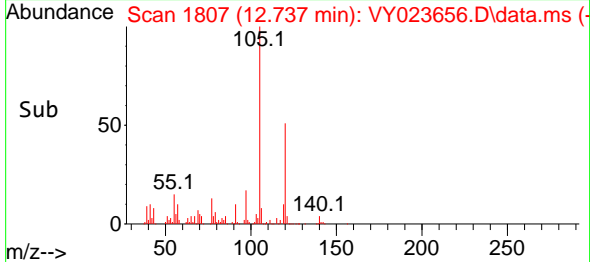
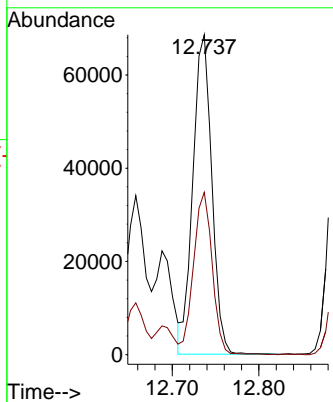


#80  
 1,3,5-Trimethylbenzene  
 Concen: 5.331 ug/l  
 RT: 12.737 min Scan# 1807  
 Delta R.T. 0.006 min  
 Lab File: VY023656.D  
 Acq: 03 Nov 2025 14:13

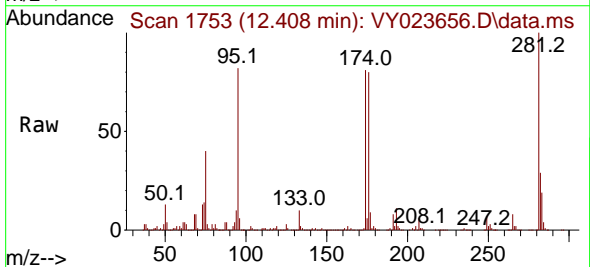
Instrument : MSVOA\_Y  
 ClientSampleId :



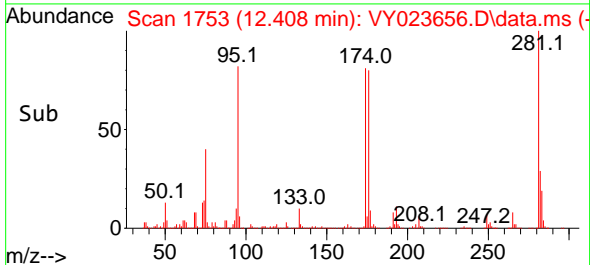
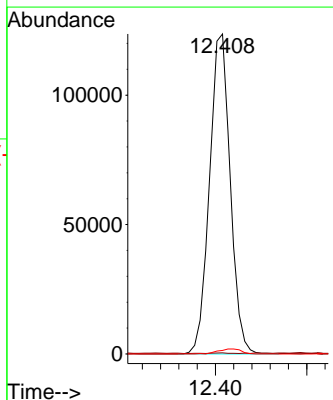
Tgt Ion: 105 Resp: 104005  
 Ion Ratio Lower Upper  
 105 100  
 120 50.5 25.4 76.4

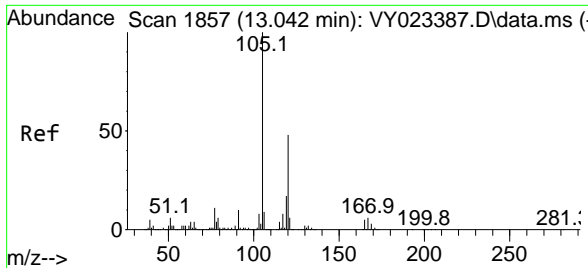


#81  
 trans-1,4-Dichloro-2-butene  
 Concen: 147.979 ug/l  
 RT: 12.408 min Scan# 1753  
 Delta R.T. 0.110 min  
 Lab File: VY023656.D  
 Acq: 03 Nov 2025 14:13



Tgt Ion: 75 Resp: 195047  
 Ion Ratio Lower Upper  
 75 100  
 53 0.2 68.6 102.8#  
 89 1.7 39.0 58.4#

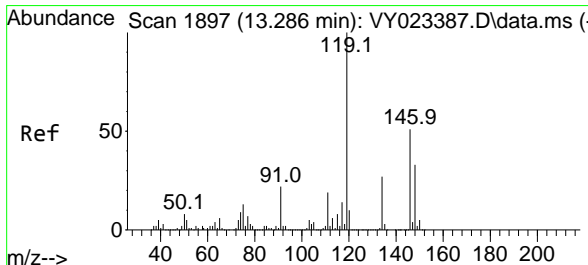
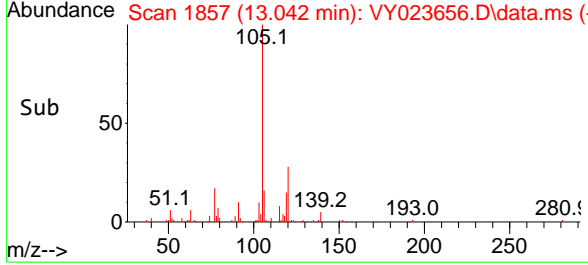
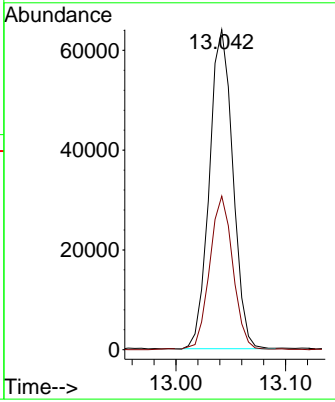
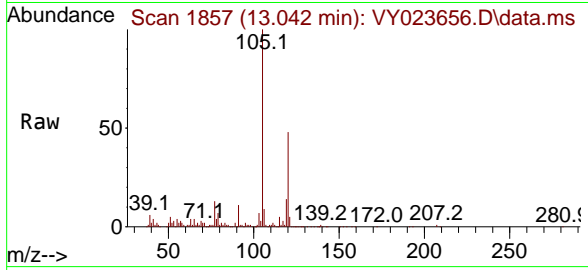




#84  
 1,2,4-Trimethylbenzene  
 Concen: 4.903 ug/l  
 RT: 13.042 min Scan# 1857  
 Delta R.T. 0.000 min  
 Lab File: VY023656.D  
 Acq: 03 Nov 2025 14:13

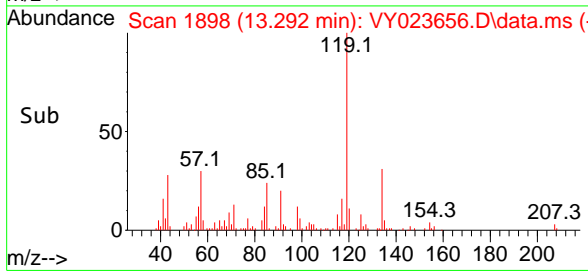
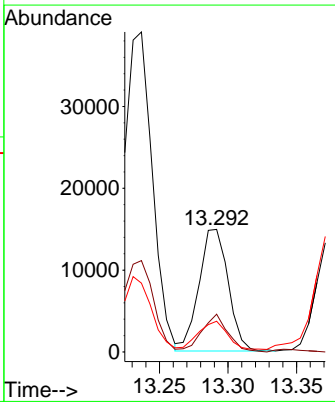
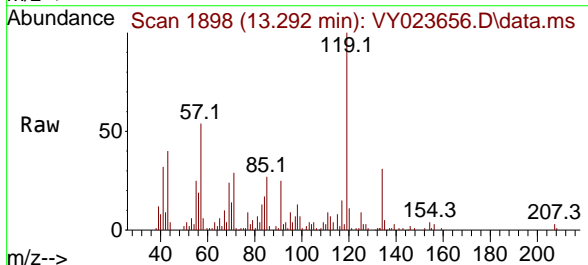
Instrument : MSVOA\_Y  
 ClientSampleId :

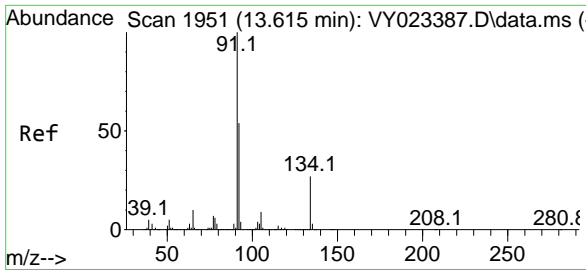
Tgt Ion:105 Resp: 95462  
 Ion Ratio Lower Upper  
 105 100  
 120 48.0 23.8 71.2



#86  
 p-Isopropyltoluene  
 Concen: 1.003 ug/l  
 RT: 13.292 min Scan# 1898  
 Delta R.T. 0.006 min  
 Lab File: VY023656.D  
 Acq: 03 Nov 2025 14:13

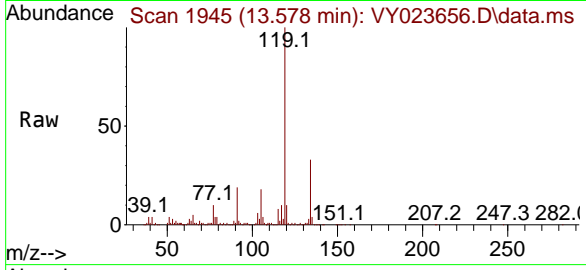
Tgt Ion:119 Resp: 22067  
 Ion Ratio Lower Upper  
 119 100  
 134 27.8 13.6 40.7  
 91 21.9 10.9 32.9





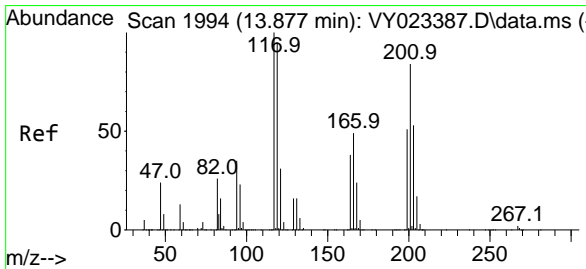
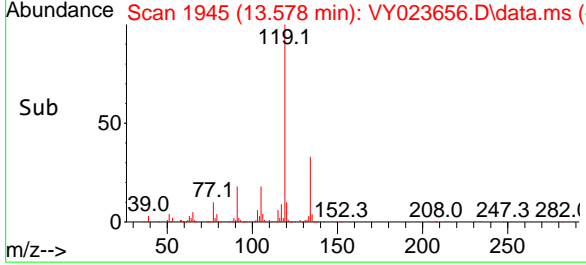
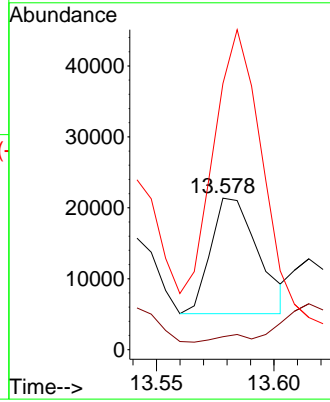
#89  
 n-Butylbenzene  
 Concen: 1.192 ug/l  
 RT: 13.578 min Scan# 1945  
 Delta R.T. -0.037 min  
 Lab File: VY023656.D  
 Acq: 03 Nov 2025 14:13

Instrument : MSVOA\_Y  
 ClientSampleId :



Tgt Ion: 91 Resp: 22852

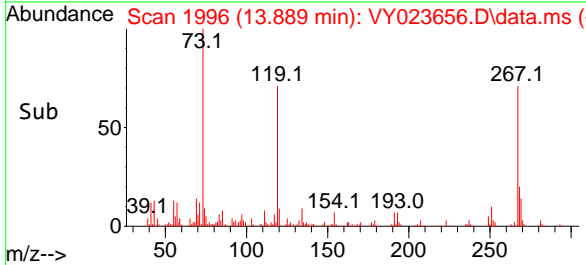
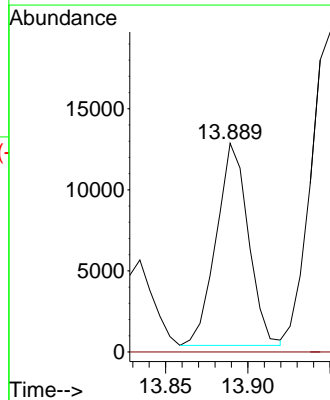
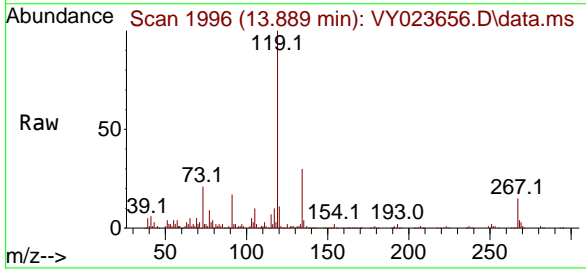
Ion	Ratio	Lower	Upper
91	100		
92	0.0	27.0	80.8#
134	327.8	14.1	42.2#

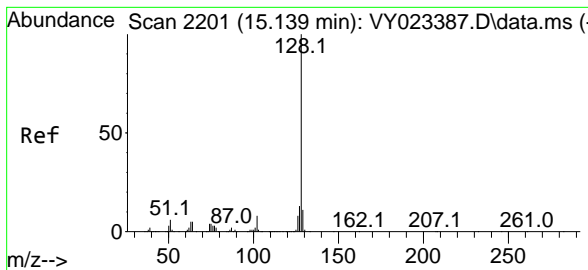


#90  
 Hexachloroethane  
 Concen: 3.591 ug/l  
 RT: 13.889 min Scan# 1996  
 Delta R.T. 0.012 min  
 Lab File: VY023656.D  
 Acq: 03 Nov 2025 14:13

Tgt Ion: 117 Resp: 16991

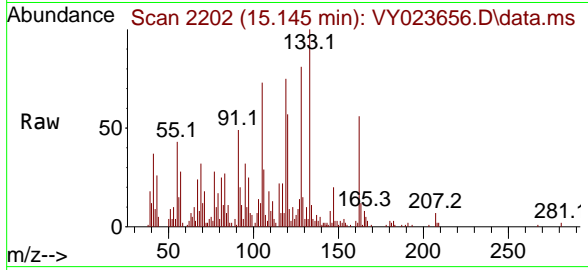
Ion	Ratio	Lower	Upper
117	100		
201	0.0	43.8	131.4#





#95  
 Naphthalene  
 Concen: 1.233 ug/l  
 RT: 15.145 min Scan# 21  
 Delta R.T. 0.006 min  
 Lab File: VY023656.D  
 Acq: 03 Nov 2025 14:13

Instrument :  
 MSVOA\_Y  
 ClientSampleId :



Tgt Ion:128 Resp: 13412

Ion	Ratio	Lower	Upper
128	100		
127	5.6	10.4	15.6#
129	7.8	8.9	13.3#

