

Data Path : Z:\voasrv\HPCHEM1\MSVOA_Y\Data\VY110325\
 Data File : VY023658.D
 Acq On : 03 Nov 2025 15:20
 Operator : SY/MD
 Sample : VIBLK
 Misc : 5.00g/5.0mL/MSVOA_Y/SOIL
 ALS Vial : 13 Sample Multiplier: 1

Instrument :
 MSVOA_Y
 ClientSampleId :

Quant Time: Nov 04 01:34:28 2025
 Quant Method : Z:\voasrv\HPCHEM1\MSVOA_Y\methods\82Y100725S.M
 Quant Title : SW846 8260
 QLast Update : Wed Oct 08 05:12:50 2025
 Response via : Initial Calibration

Compound	R.T.	QIon	Response	Conc	Units	Dev(Min)

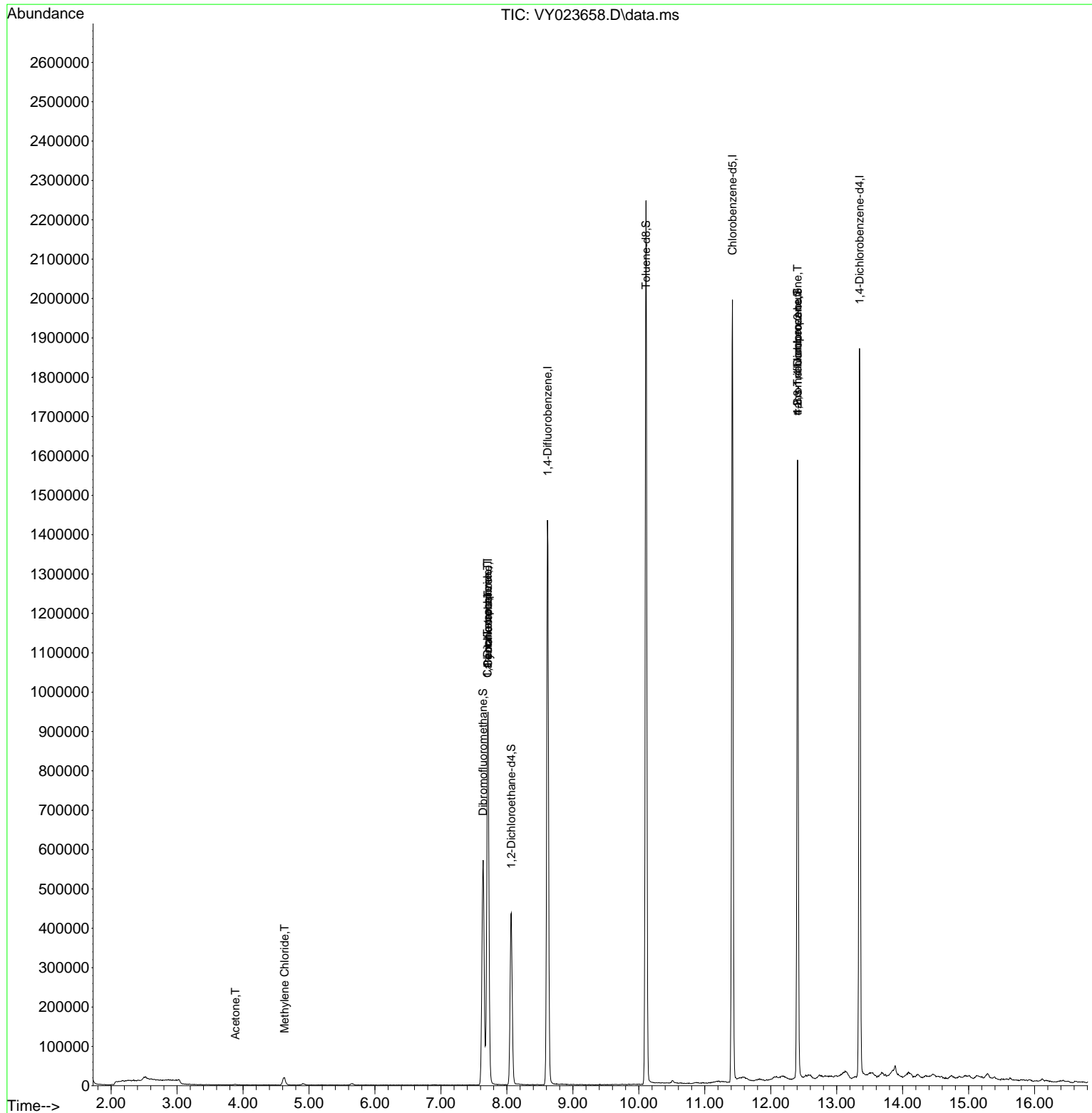
Internal Standards						
1) Pentafluorobenzene	7.713	168	807013	50.000	ug/l	0.00
34) 1,4-Difluorobenzene	8.616	114	1326806	50.000	ug/l	0.00
63) Chlorobenzene-d5	11.420	117	1152263	50.000	ug/l	0.00
72) 1,4-Dichlorobenzene-d4	13.346	152	502636	50.000	ug/l	0.00
System Monitoring Compounds						
33) 1,2-Dichloroethane-d4	8.067	65	342367	50.733	ug/l	0.00
Spiked Amount	50.000	Range	50 - 163	Recovery	=	101.460%
35) Dibromofluoromethane	7.640	113	409053	50.175	ug/l	0.00
Spiked Amount	50.000	Range	54 - 147	Recovery	=	100.340%
50) Toluene-d8	10.109	98	1505651	49.592	ug/l	0.00
Spiked Amount	50.000	Range	58 - 134	Recovery	=	99.180%
62) 4-Bromofluorobenzene	12.408	95	468500	46.739	ug/l	0.00
Spiked Amount	50.000	Range	30 - 143	Recovery	=	93.480%
Target Compounds						
						Qvalue
16) Acetone	3.885	43	1974	1.229	ug/l	91
20) Methylene Chloride	4.628	84	15398	1.772	ug/l #	94
31) Cyclohexane	7.713	56	12726	1.134	ug/l #	1
36) 1,1-Dichloropropene	7.707	75	50426	4.672	ug/l #	48
38) Carbon Tetrachloride	7.707	117	73205	5.594	ug/l #	16
76) 1,2,3-Trichloropropane	12.408	75	222637	50.205	ug/l #	100
81) trans-1,4-Dichloro-2-b...	12.408	75	222637	123.111	ug/l #	15

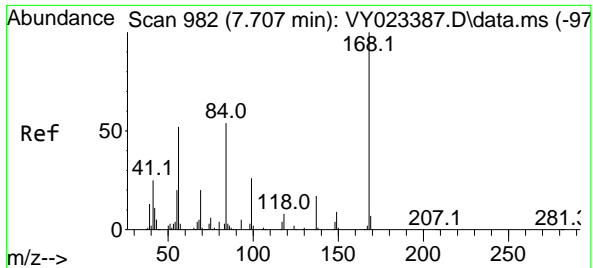
(#) = qualifier out of range (m) = manual integration (+) = signals summed

Data Path : Z:\voasrv\HPCHEM1\MSVOA_Y\Data\VY110325\
 Data File : VY023658.D
 Acq On : 03 Nov 2025 15:20
 Operator : SY/MD
 Sample : VIBLK
 Misc : 5.00g/5.0mL/MSVOA_Y/SOIL
 ALS Vial : 13 Sample Multiplier: 1

Instrument :
 MSVOA_Y
 ClientSampleId :

Quant Time: Nov 04 01:34:28 2025
 Quant Method : Z:\voasrv\HPCHEM1\MSVOA_Y\methods\82Y100725S.M
 Quant Title : SW846 8260
 QLast Update : Wed Oct 08 05:12:50 2025
 Response via : Initial Calibration

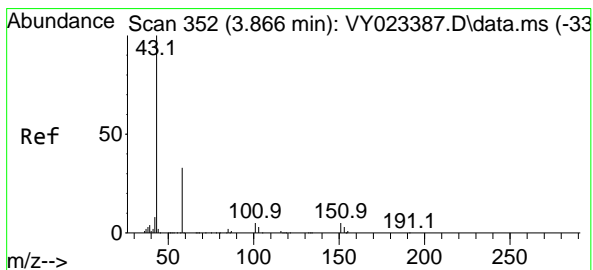
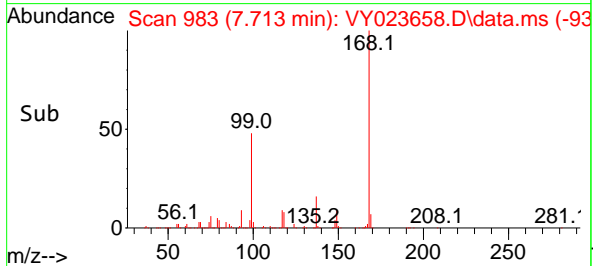
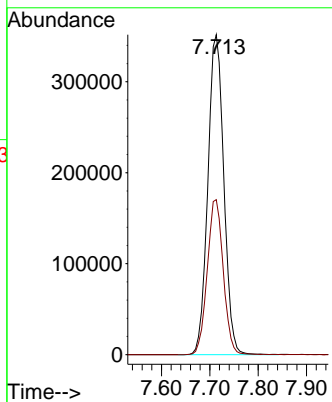
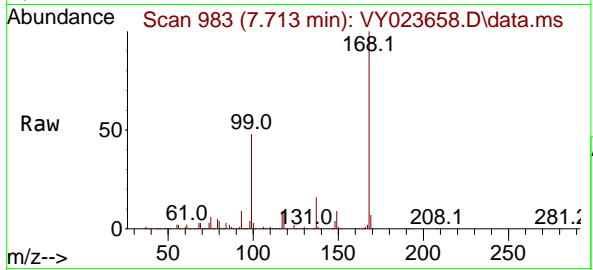




#1
 Pentafluorobenzene
 Concen: 50.000 ug/l
 RT: 7.713 min Scan# 91
 Delta R.T. 0.006 min
 Lab File: VY023658.D
 Acq: 03 Nov 2025 15:20

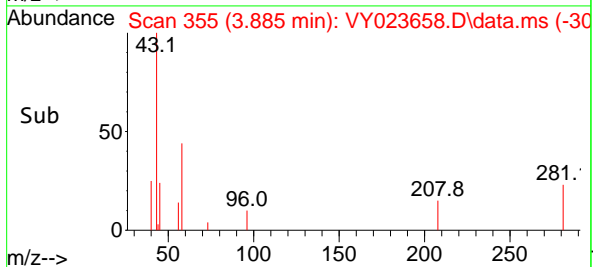
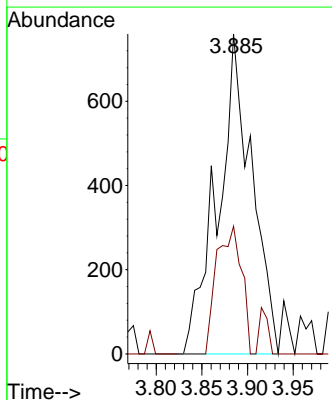
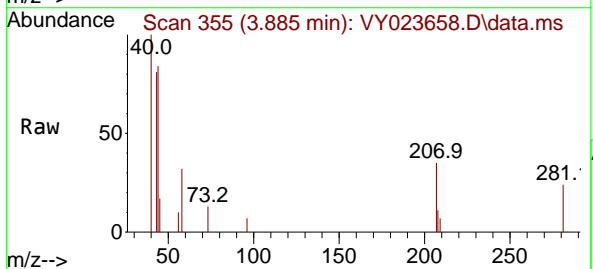
Instrument :
 MSVOA_Y
 ClientSampleId :

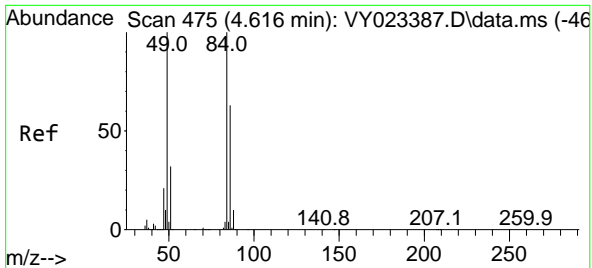
Tgt Ion:168 Resp: 807013
 Ion Ratio Lower Upper
 168 100
 99 48.5 39.7 59.5



#16
 Acetone
 Concen: 1.229 ug/l
 RT: 3.885 min Scan# 355
 Delta R.T. 0.018 min
 Lab File: VY023658.D
 Acq: 03 Nov 2025 15:20

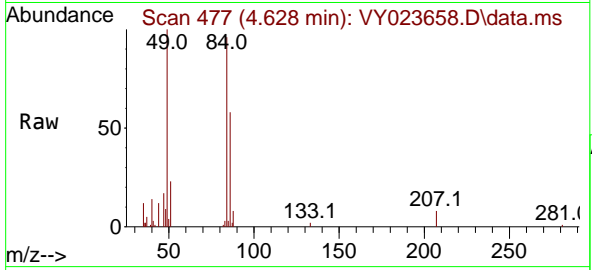
Tgt Ion: 43 Resp: 1974
 Ion Ratio Lower Upper
 43 100
 58 39.9 27.7 41.5





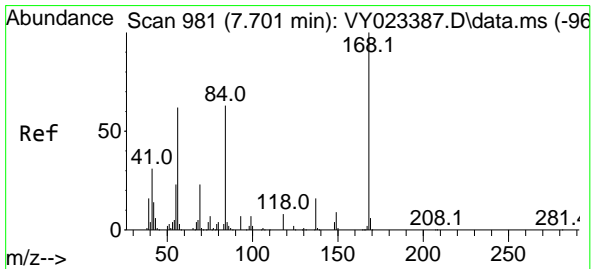
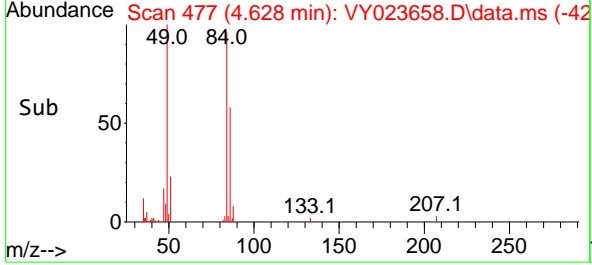
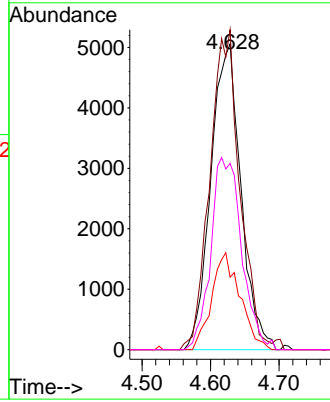
#20
 Methylene Chloride
 Concen: 1.772 ug/l
 RT: 4.628 min Scan# 41
 Delta R.T. 0.012 min
 Lab File: VY023658.D
 Acq: 03 Nov 2025 15:20

Instrument :
 MSVOA_Y
 ClientSampleId :

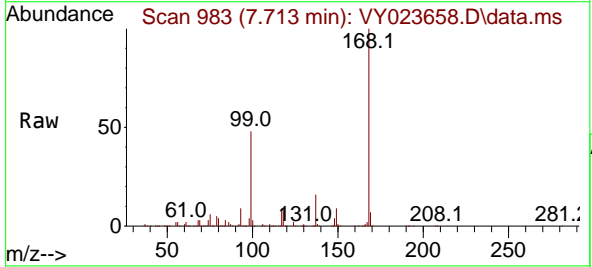


Tgt Ion: 84 Resp: 15398

Ion	Ratio	Lower	Upper
84	100		
49	104.6	80.2	120.4
51	23.7	25.9	38.9#
86	60.9	50.6	75.8

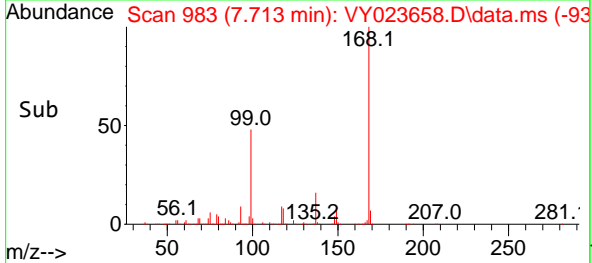
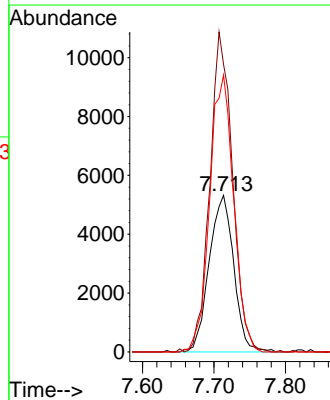


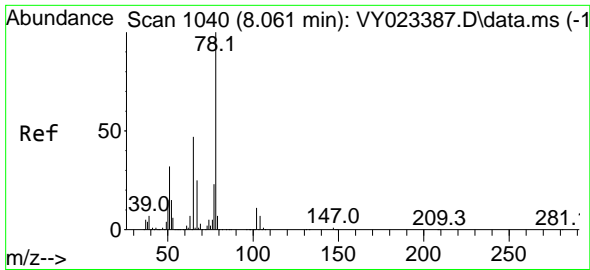
#31
 Cyclohexane
 Concen: 1.134 ug/l
 RT: 7.713 min Scan# 983
 Delta R.T. 0.012 min
 Lab File: VY023658.D
 Acq: 03 Nov 2025 15:20



Tgt Ion: 56 Resp: 12726

Ion	Ratio	Lower	Upper
56	100		
69	182.6	30.0	45.0#
84	176.7	81.2	121.8#

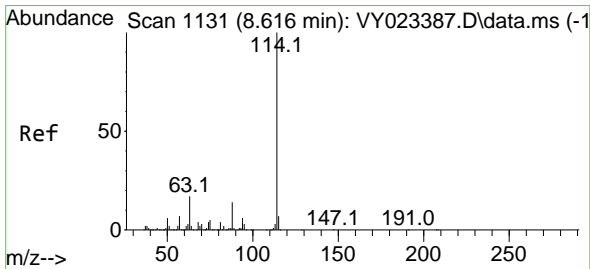
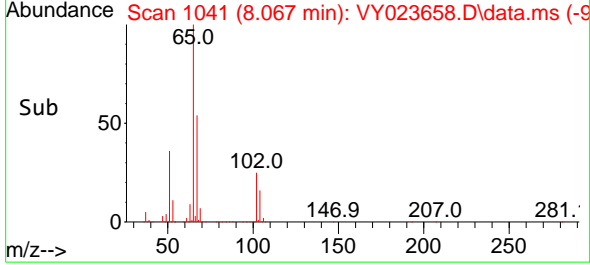
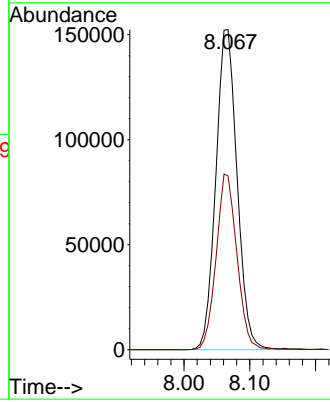
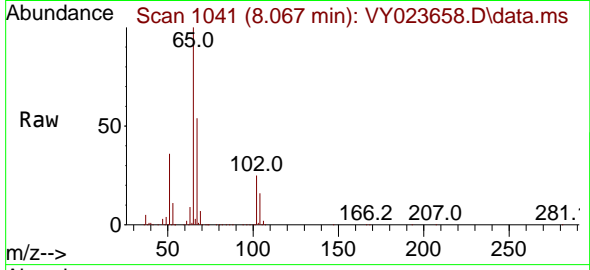




#33
 1,2-Dichloroethane-d4
 Concen: 50.733 ug/l
 RT: 8.067 min Scan# 1041
 Delta R.T. 0.006 min
 Lab File: VY023658.D
 Acq: 03 Nov 2025 15:20

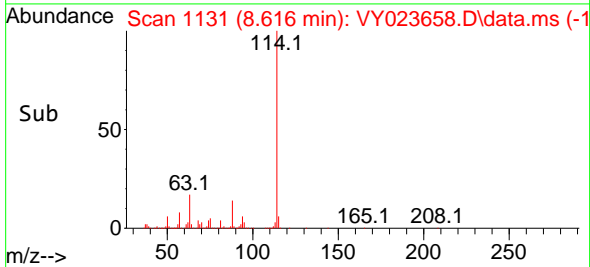
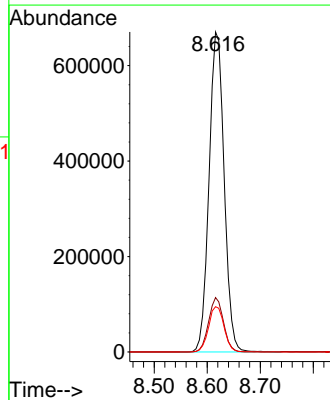
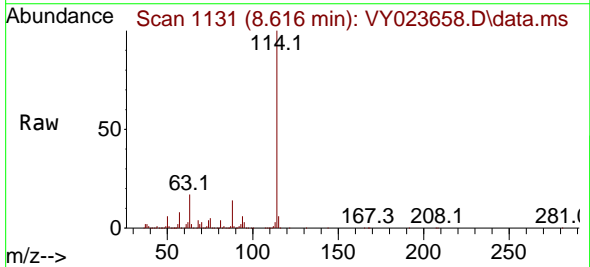
Instrument :
 MSVOA_Y
 ClientSampleId :

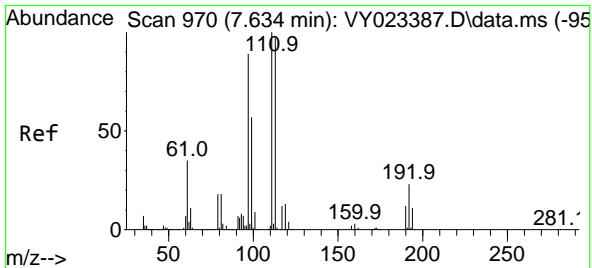
Tgt Ion: 65 Resp: 342367
 Ion Ratio Lower Upper
 65 100
 67 53.8 0.0 105.8



#34
 1,4-Difluorobenzene
 Concen: 50.000 ug/l
 RT: 8.616 min Scan# 1131
 Delta R.T. -0.000 min
 Lab File: VY023658.D
 Acq: 03 Nov 2025 15:20

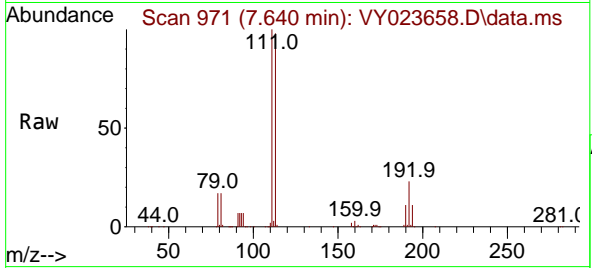
Tgt Ion: 114 Resp: 1326806
 Ion Ratio Lower Upper
 114 100
 63 17.0 0.0 34.2
 88 14.2 0.0 28.4





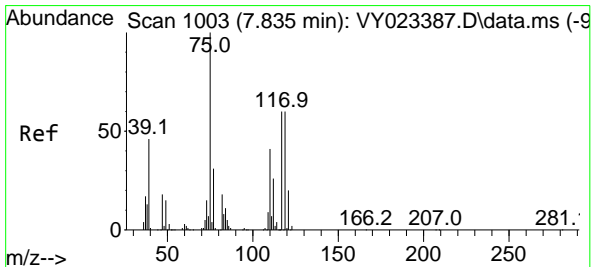
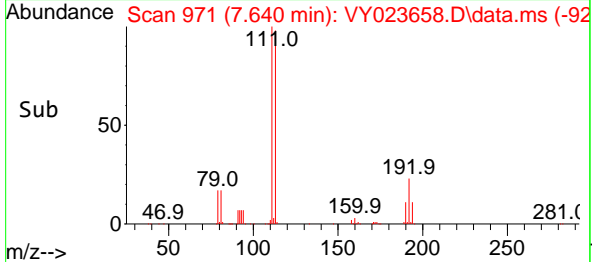
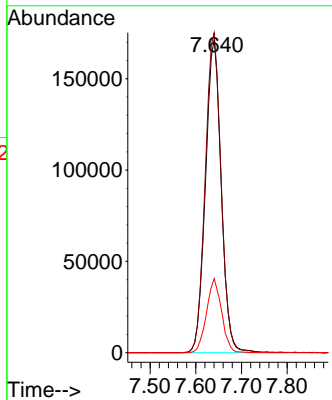
#35
 Dibromofluoromethane
 Concen: 50.175 ug/l
 RT: 7.640 min Scan# 911
 Delta R.T. 0.006 min
 Lab File: VY023658.D
 Acq: 03 Nov 2025 15:20

Instrument :
 MSVOA_Y
 ClientSampleId :

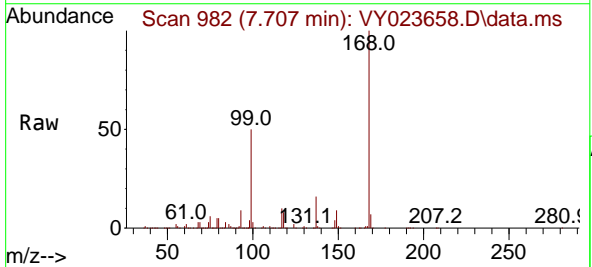


Tgt Ion: 113 Resp: 409053

Ion	Ratio	Lower	Upper
113	100		
111	103.3	81.8	122.6
192	22.7	18.0	27.0

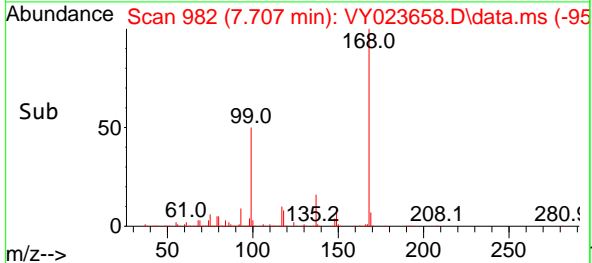
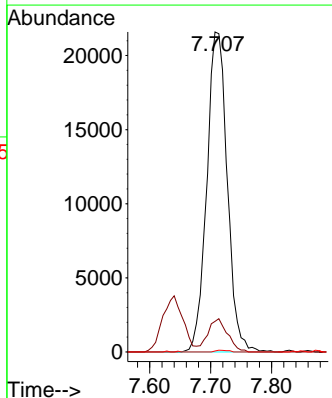


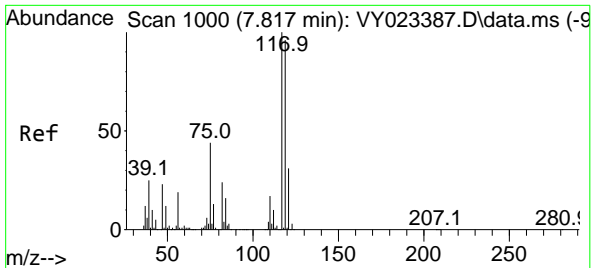
#36
 1,1-Dichloropropene
 Concen: 4.672 ug/l
 RT: 7.707 min Scan# 982
 Delta R.T. -0.128 min
 Lab File: VY023658.D
 Acq: 03 Nov 2025 15:20



Tgt Ion: 75 Resp: 50426

Ion	Ratio	Lower	Upper
75	100		
110	10.1	19.9	59.7#
77	0.3	25.0	37.6#

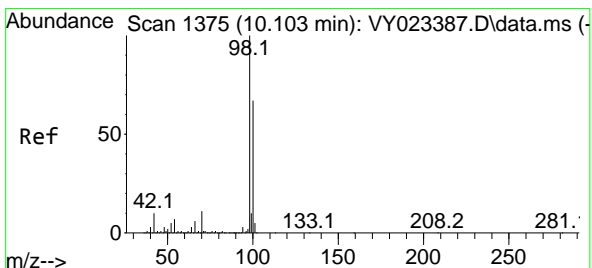
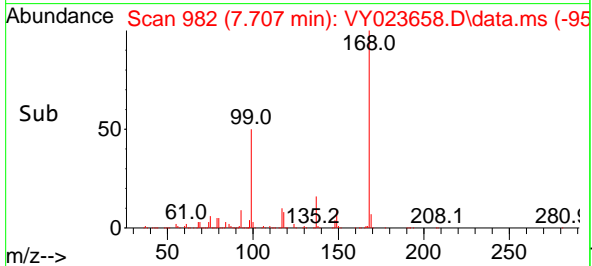
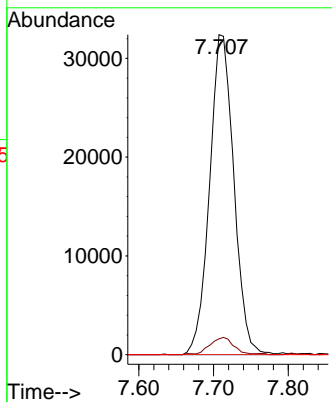
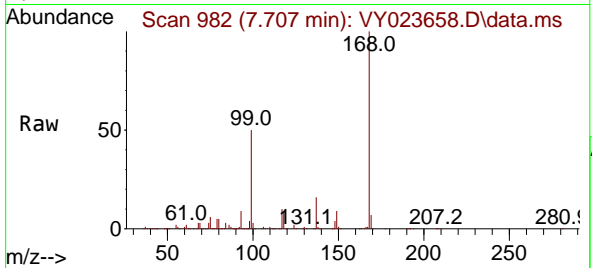




#38
 Carbon Tetrachloride
 Concen: 5.594 ug/l
 RT: 7.707 min Scan# 91
 Delta R.T. -0.110 min
 Lab File: VY023658.D
 Acq: 03 Nov 2025 15:20

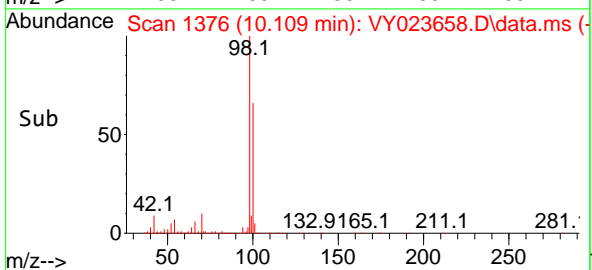
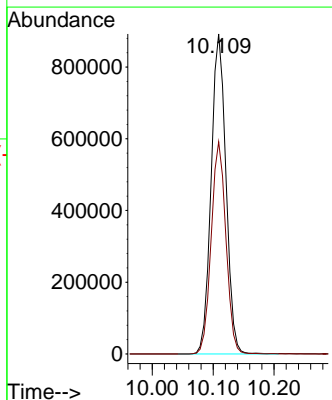
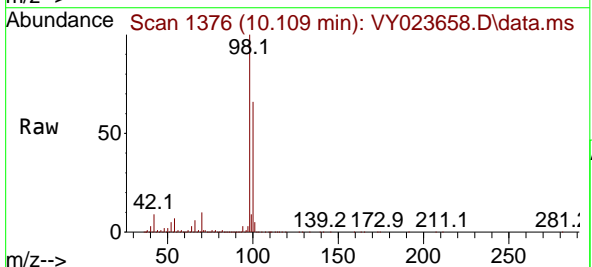
Instrument : MSVOA_Y
 ClientSampled :

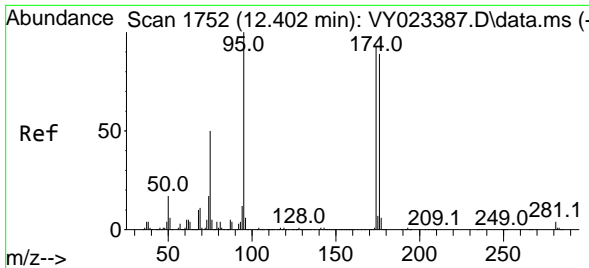
Tgt Ion:117 Resp: 73205
 Ion Ratio Lower Upper
 117 100
 119 5.0 76.8 115.2#
 121 0.0 24.5 36.7#



#50
 Toluene-d8
 Concen: 49.592 ug/l
 RT: 10.109 min Scan# 1376
 Delta R.T. 0.006 min
 Lab File: VY023658.D
 Acq: 03 Nov 2025 15:20

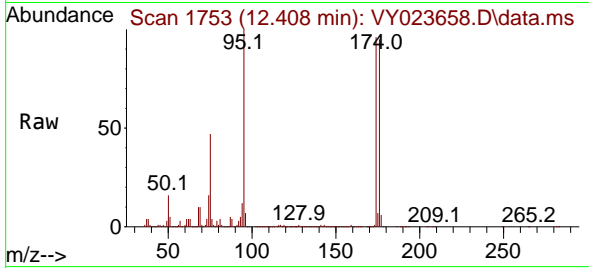
Tgt Ion: 98 Resp: 1505651
 Ion Ratio Lower Upper
 98 100
 100 65.8 53.0 79.4



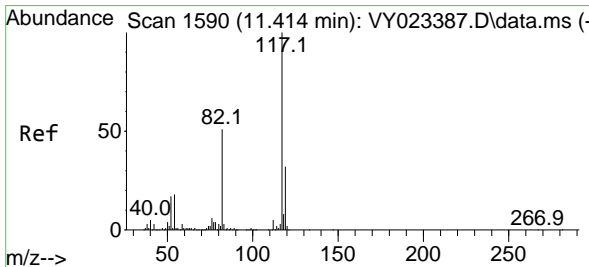
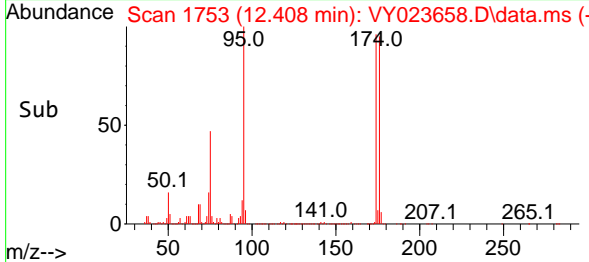
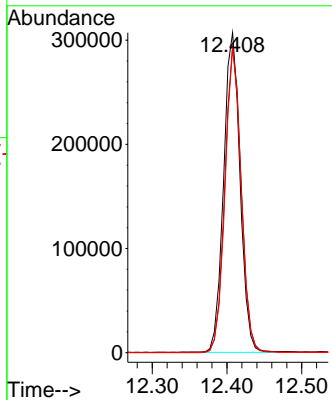


#62
 4-Bromofluorobenzene
 Concen: 46.739 ug/l
 RT: 12.408 min Scan# 11
 Delta R.T. 0.006 min
 Lab File: VY023658.D
 Acq: 03 Nov 2025 15:20

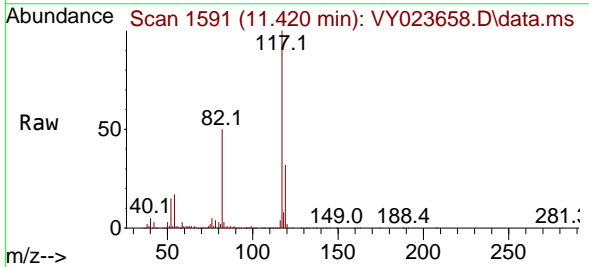
Instrument :
 MSVOA_Y
 ClientSampleId :



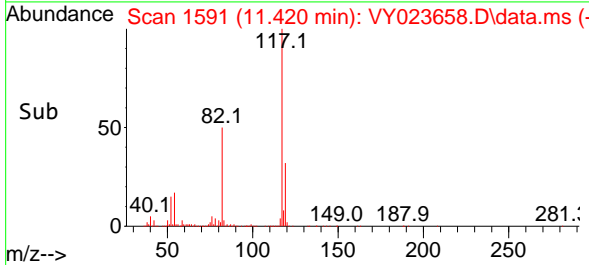
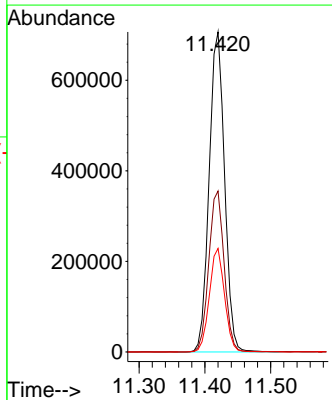
Tgt Ion: 95 Resp: 468500
 Ion Ratio Lower Upper
 95 100
 174 95.4 0.0 192.8
 176 93.4 0.0 187.6

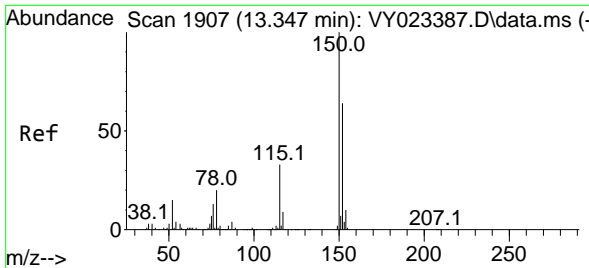


#63
 Chlorobenzene-d5
 Concen: 50.000 ug/l
 RT: 11.420 min Scan# 1591
 Delta R.T. 0.006 min
 Lab File: VY023658.D
 Acq: 03 Nov 2025 15:20



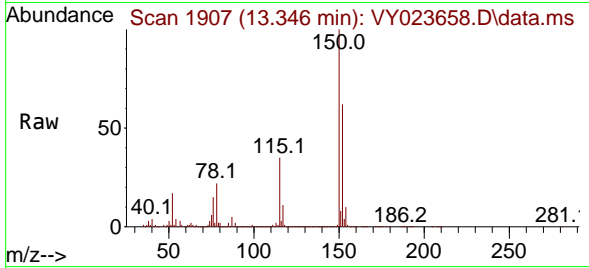
Tgt Ion: 117 Resp: 1152263
 Ion Ratio Lower Upper
 117 100
 82 50.3 41.0 61.4
 119 32.3 25.6 38.4



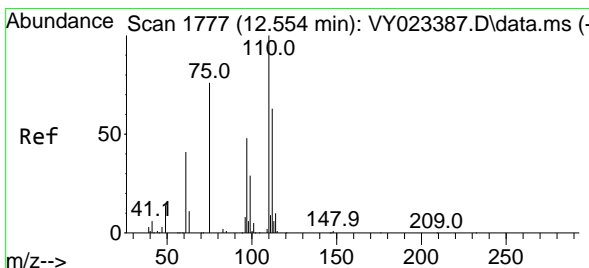
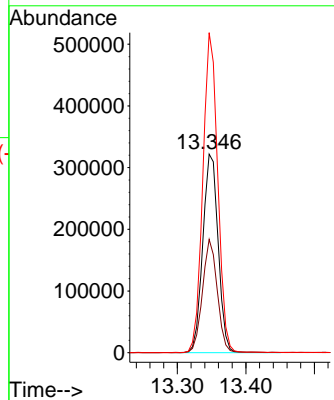
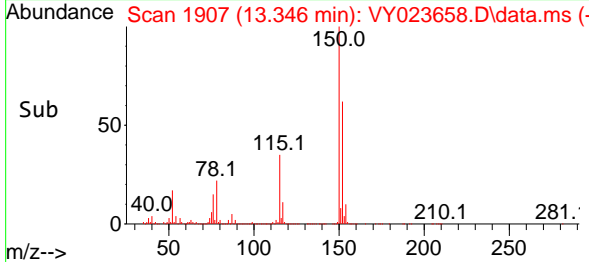


#72
 1,4-Dichlorobenzene-d4
 Concen: 50.000 ug/l
 RT: 13.346 min Scan# 1907
 Delta R.T. -0.000 min
 Lab File: VY023658.D
 Acq: 03 Nov 2025 15:20

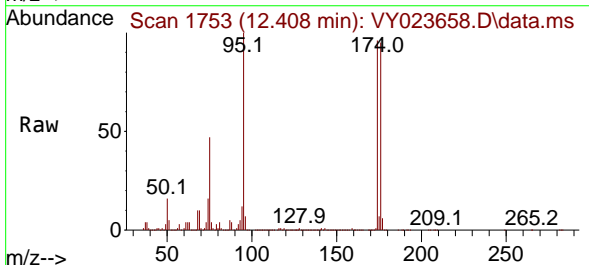
Instrument : MSVOA_Y
 ClientSampleId :



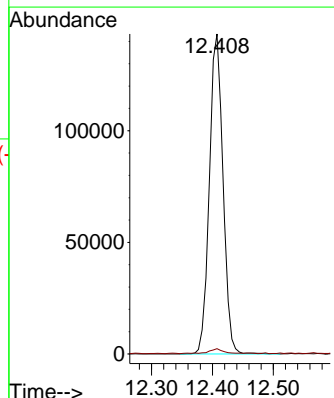
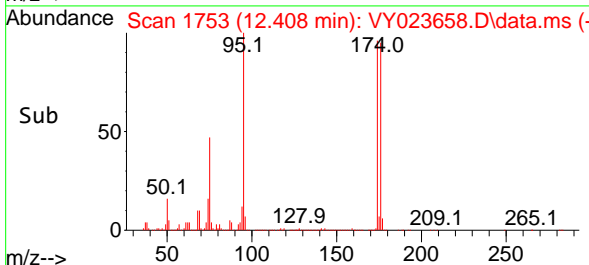
Tgt Ion:152 Resp: 502636
 Ion Ratio Lower Upper
 152 100
 115 54.9 27.1 81.2
 150 156.5 0.0 347.4

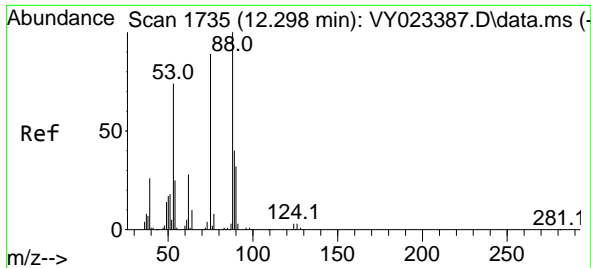


#76
 1,2,3-Trichloropropane
 Concen: 50.205 ug/l
 RT: 12.408 min Scan# 1753
 Delta R.T. -0.146 min
 Lab File: VY023658.D
 Acq: 03 Nov 2025 15:20



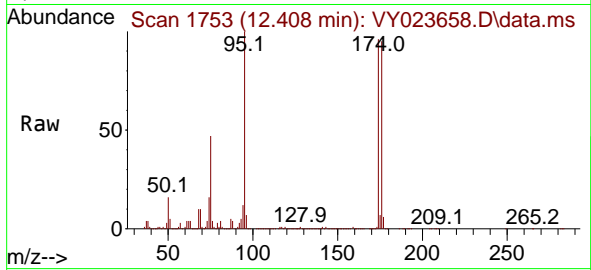
Tgt Ion: 75 Resp: 222637
 Ion Ratio Lower Upper
 75 100
 77 1.5 0.0 0.0#





#81
 trans-1,4-Dichloro-2-butene
 Concen: 123.111 ug/l
 RT: 12.408 min Scan# 1
 Delta R.T. 0.110 min
 Lab File: VY023658.D
 Acq: 03 Nov 2025 15:20

Instrument :
 MSVOA_Y
 ClientSampleId :



Tgt Ion: 75 Resp: 222637
 Ion Ratio Lower Upper
 75 100
 53 0.1 68.6 102.8#
 89 0.1 39.0 58.4#

