

Data Path : Z:\voasrv\HPCHEM1\MSVOA\_Y\Data\VY110422\  
 Data File : VY011314.D  
 Acq On : 04 Nov 2022 21:40  
 Operator : KP/MD  
 Sample : N5436-05  
 Misc : 5.05g/5.0mL/MSVOA\_Y/SOIL  
 ALS Vial : 21 Sample Multiplier: 1

Instrument :  
 MSVOA\_Y  
 ClientSampleId :

Quant Time: Nov 07 01:56:11 2022  
 Quant Method : Z:\voasrv\HPCHEM1\MSVOA\_Y\methods\82Y110122S.M  
 Quant Title : SW846 8260  
 QLast Update : Tue Nov 01 11:56:18 2022  
 Response via : Initial Calibration

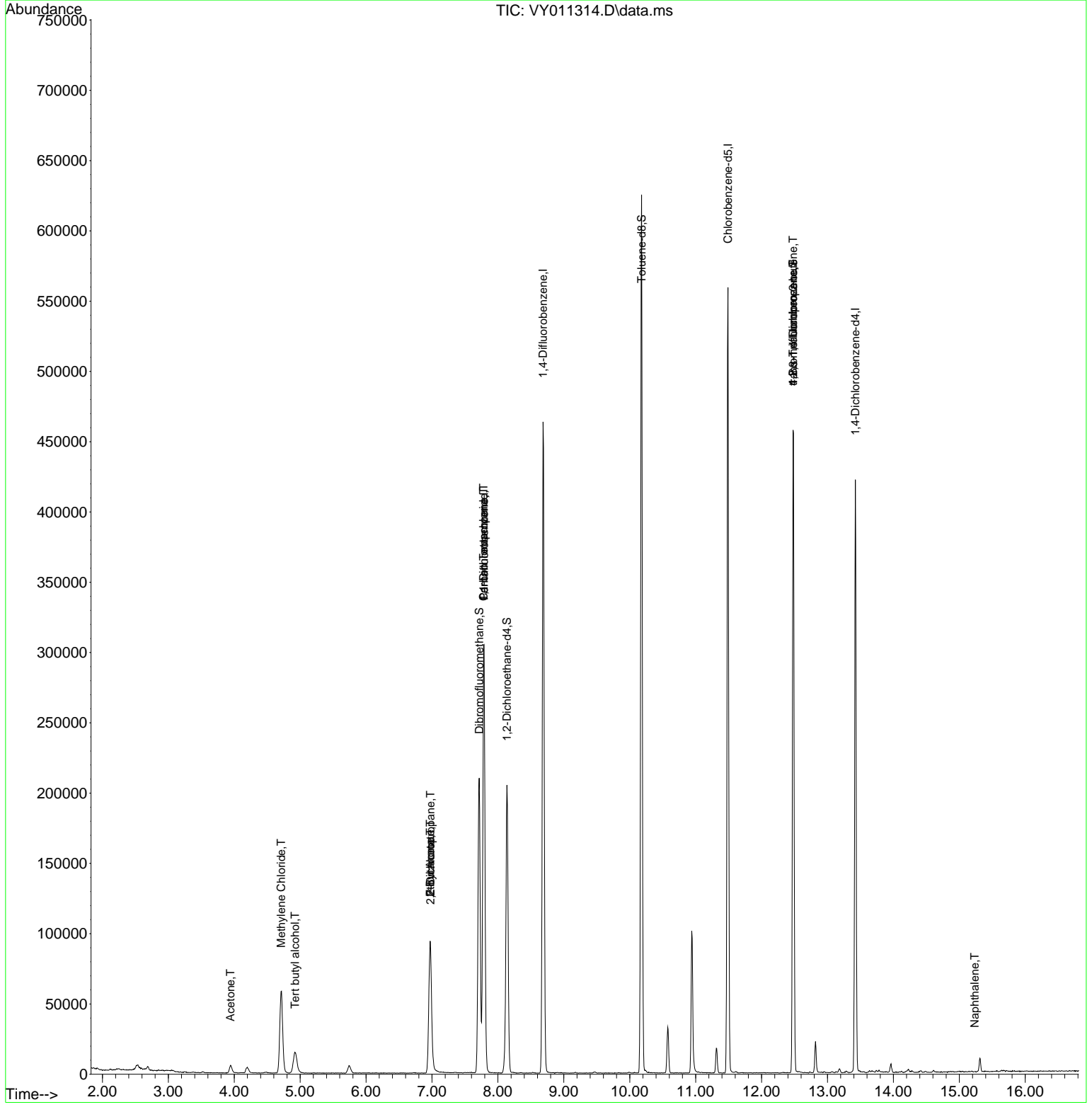
Compound	R.T.	QIon	Response	Conc	Units	Dev(Min)
-----						
Internal Standards						
1) Pentafluorobenzene	7.789	168	245496	50.000	ug/l	0.00
34) 1,4-Difluorobenzene	8.685	114	405416	50.000	ug/l	0.00
63) Chlorobenzene-d5	11.490	117	315773	50.000	ug/l	0.00
72) 1,4-Dichlorobenzene-d4	13.422	152	112592	50.000	ug/l	0.00
System Monitoring Compounds						
33) 1,2-Dichloroethane-d4	8.137	65	151872	57.843	ug/l	0.00
Spiked Amount	50.000	Range	50 - 163	Recovery	=	115.680%
35) Dibromofluoromethane	7.716	113	153432	58.904	ug/l	0.00
Spiked Amount	50.000	Range	54 - 147	Recovery	=	117.800%
50) Toluene-d8	10.179	98	419741	41.504	ug/l	0.00
Spiked Amount	50.000	Range	49 - 140	Recovery	=	83.000%
62) 4-Bromofluorobenzene	12.477	95	144598	41.185	ug/l	0.00
Spiked Amount	50.000	Range	25 - 144	Recovery	=	82.380%
Target Compounds						
					Qvalue	
2) Dichlorodifluoromethane	1.906	85	109	Below Cal	#	43
11) Tert butyl alcohol	4.924	59	15826	5.918	ug/l #	79
16) Acetone	3.942	43	9623	12.142	ug/l	94
20) Methylene Chloride	4.710	84	46475	10.351	ug/l #	82
25) 2-Butanone	6.972	43	4914	4.406	ug/l	91
26) 2,2-Dichloropropane	6.978	77	7295	1.519	ug/l #	55
36) 1,1-Dichloropropene	7.783	75	17493	4.112	ug/l #	51
37) Ethyl Acetate	6.972	43	4914	2.143	ug/l #	1
38) Carbon Tetrachloride	7.783	117	24437	5.537	ug/l #	17
76) 1,2,3-Trichloropropane	12.477	75	70125	51.160	ug/l #	100
81) trans-1,4-Dichloro-2-b...	12.477	75	70125	109.488	ug/l #	7
95) Naphthalene	15.233	128	102	3.987	ug/l #	69
-----						

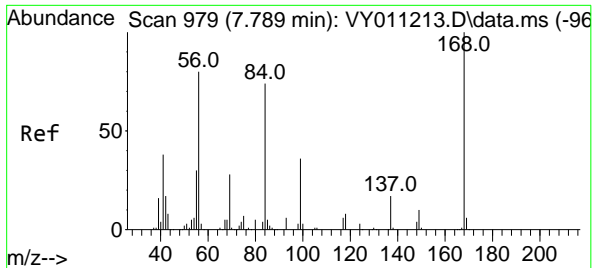
(#) = qualifier out of range (m) = manual integration (+) = signals summed

Data Path : Z:\voasrv\HPCHEM1\MSVOA\_Y\Data\VY110422\  
 Data File : VY011314.D  
 Acq On : 04 Nov 2022 21:40  
 Operator : KP/MD  
 Sample : N5436-05  
 Misc : 5.05g/5.0mL/MSVOA\_Y/SOIL  
 ALS Vial : 21 Sample Multiplier: 1

Instrument :  
 MSVOA\_Y  
 ClientSampleId :

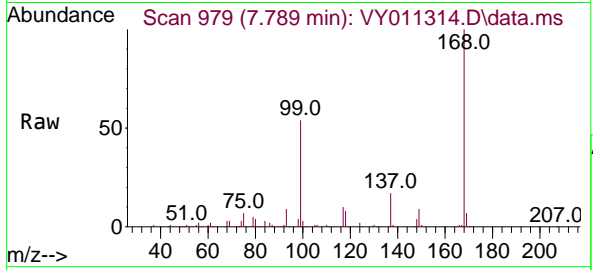
Quant Time: Nov 07 01:56:11 2022  
 Quant Method : Z:\voasrv\HPCHEM1\MSVOA\_Y\methods\82Y110122S.M  
 Quant Title : SW846 8260  
 QLast Update : Tue Nov 01 11:56:18 2022  
 Response via : Initial Calibration



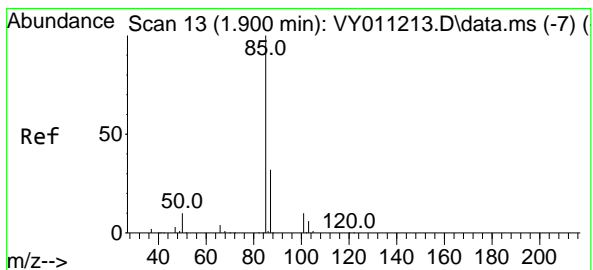
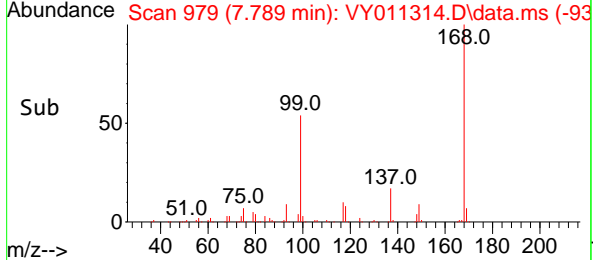
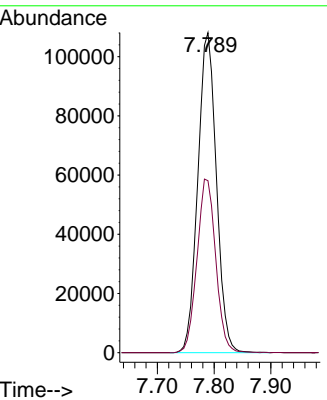


#1  
 Pentafluorobenzene  
 Concen: 50.000 ug/l  
 RT: 7.789 min Scan# 91  
 Delta R.T. 0.000 min  
 Lab File: VY011314.D  
 Acq: 04 Nov 2022 21:40

Instrument :  
 MSVOA\_Y  
 ClientSampleId :

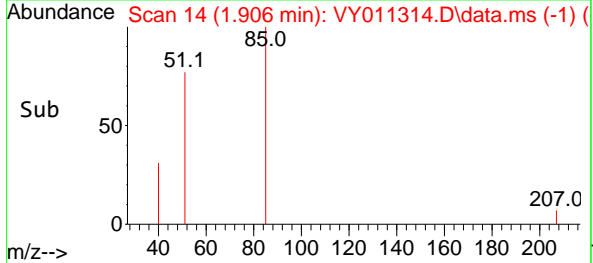
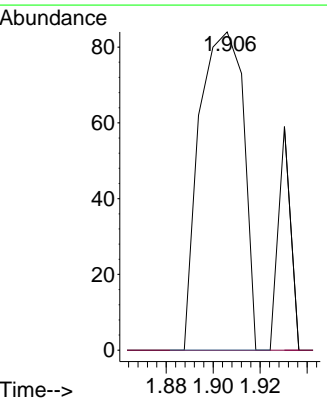
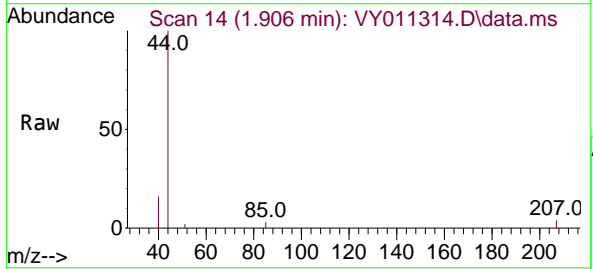


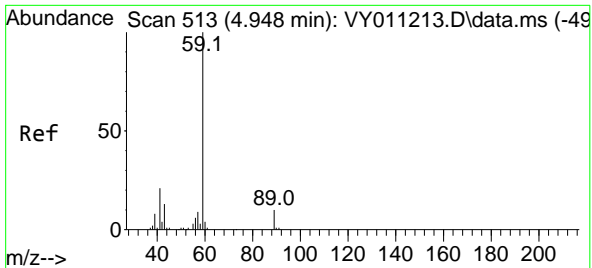
Tgt Ion:168 Resp: 245496  
 Ion Ratio Lower Upper  
 168 100  
 99 53.7 46.9 70.3



#2  
 Dichlorodifluoromethane  
 Concen: Below Cal  
 RT: 1.906 min Scan# 14  
 Delta R.T. 0.006 min  
 Lab File: VY011314.D  
 Acq: 04 Nov 2022 21:40

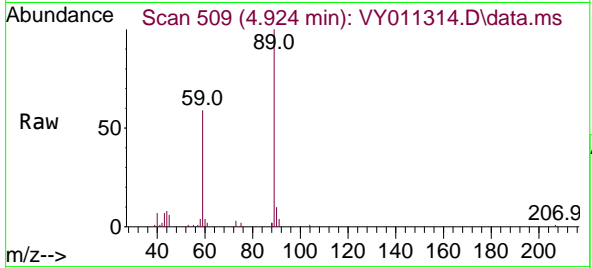
Tgt Ion: 85 Resp: 109  
 Ion Ratio Lower Upper  
 85 100  
 87 0.0 16.1 48.2#



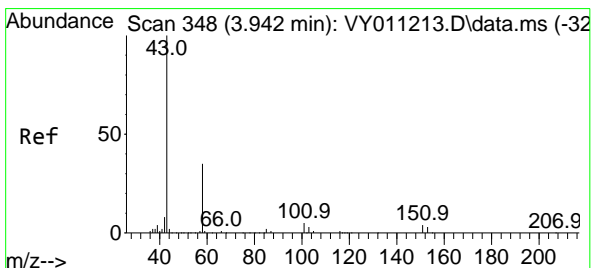
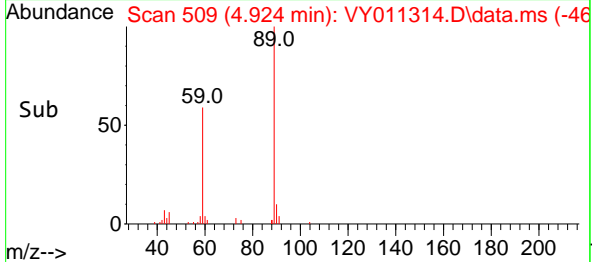
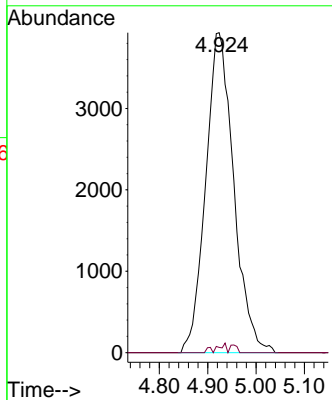


#11  
 Tert butyl alcohol  
 Concen: 5.918 ug/l  
 RT: 4.924 min Scan# 509  
 Delta R.T. -0.030 min  
 Lab File: VY011314.D  
 Acq: 04 Nov 2022 21:40

Instrument : MSVOA\_Y  
 ClientSampleId :

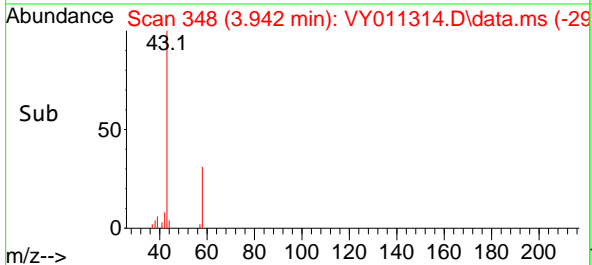
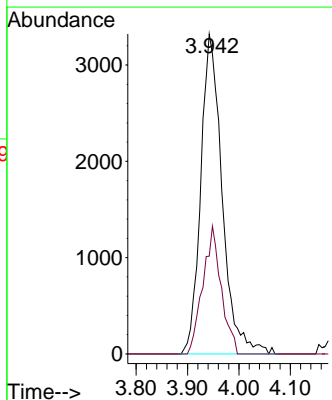
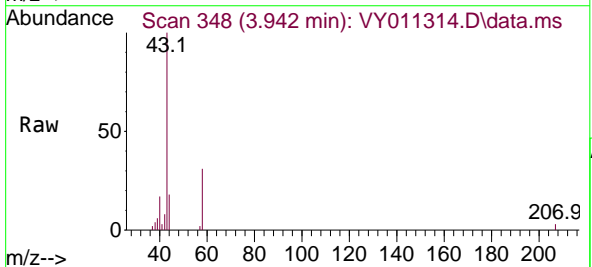


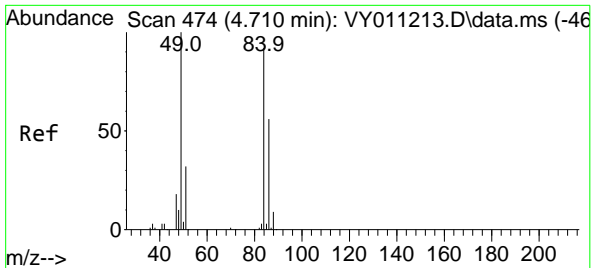
Tgt Ion: 59 Resp: 15826  
 Ion Ratio Lower Upper  
 59 100  
 57 0.5 6.4 9.6#



#16  
 Acetone  
 Concen: 12.142 ug/l  
 RT: 3.942 min Scan# 348  
 Delta R.T. 0.000 min  
 Lab File: VY011314.D  
 Acq: 04 Nov 2022 21:40

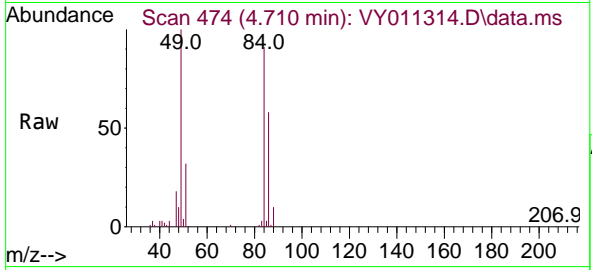
Tgt Ion: 43 Resp: 9623  
 Ion Ratio Lower Upper  
 43 100  
 58 30.5 22.0 33.0



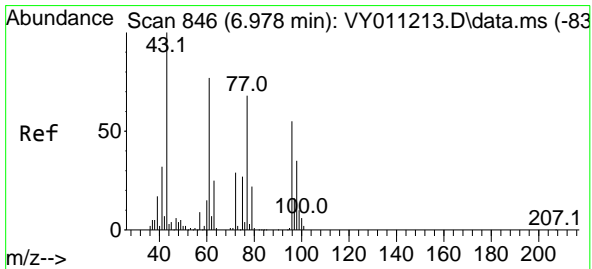
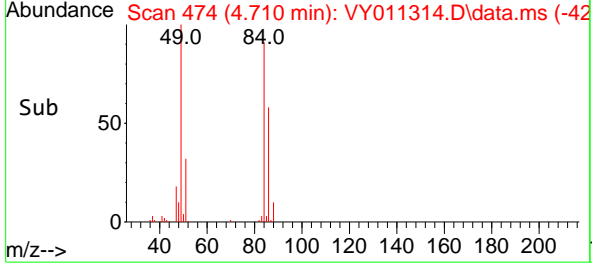
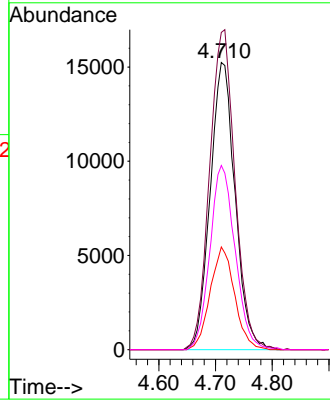


#20  
 Methylene Chloride  
 Concen: 10.351 ug/l  
 RT: 4.710 min Scan# 41  
 Delta R.T. 0.000 min  
 Lab File: VY011314.D  
 Acq: 04 Nov 2022 21:40

Instrument :  
 MSVOA\_Y  
 ClientSampleId :

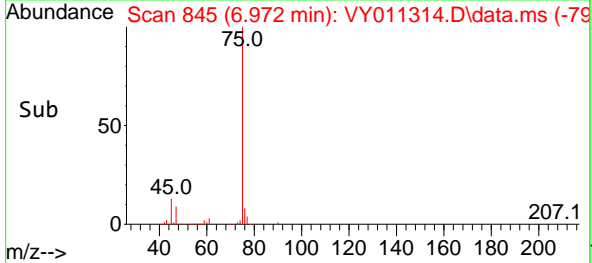
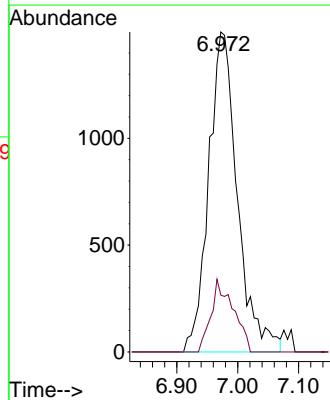
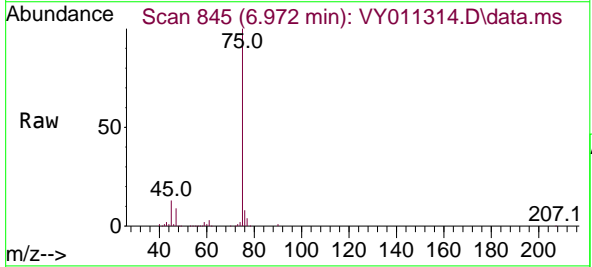


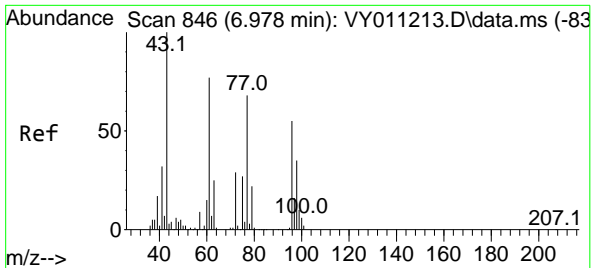
Tgt Ion: 84 Resp: 46475  
 Ion Ratio Lower Upper  
 84 100  
 49 110.5 114.4 171.6#  
 51 35.8 35.3 52.9  
 86 64.1 53.7 80.5



#25  
 2-Butanone  
 Concen: 4.406 ug/l  
 RT: 6.972 min Scan# 845  
 Delta R.T. -0.006 min  
 Lab File: VY011314.D  
 Acq: 04 Nov 2022 21:40

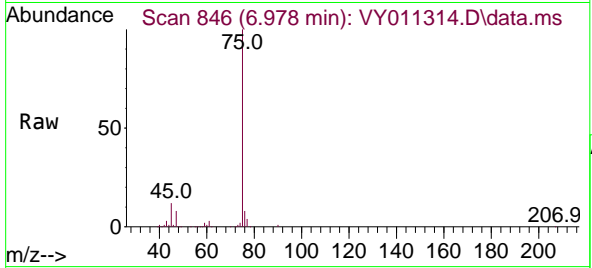
Tgt Ion: 43 Resp: 4914  
 Ion Ratio Lower Upper  
 43 100  
 72 17.8 17.7 26.5



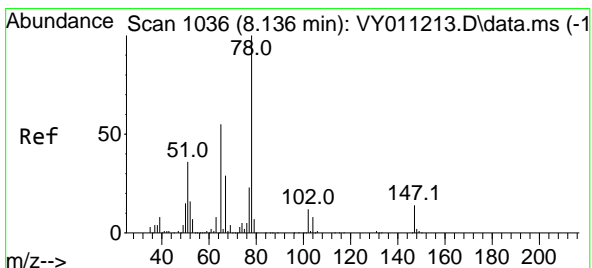
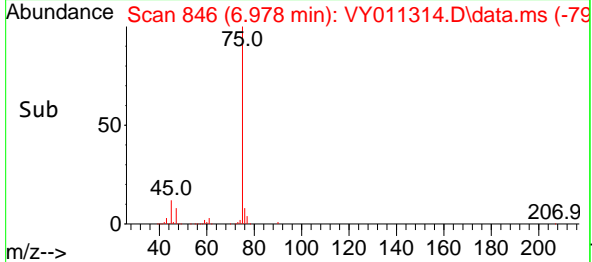
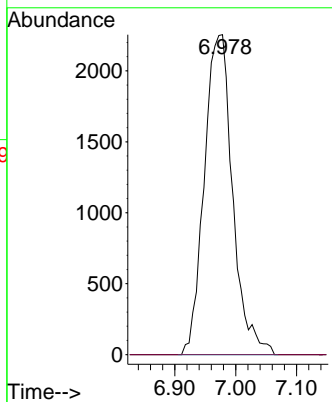


#26  
 2,2-Dichloropropane  
 Concen: 1.519 ug/l  
 RT: 6.978 min Scan# 846  
 Delta R.T. 0.000 min  
 Lab File: VY011314.D  
 Acq: 04 Nov 2022 21:40

Instrument :  
 MSVOA\_Y  
 ClientSampleId :

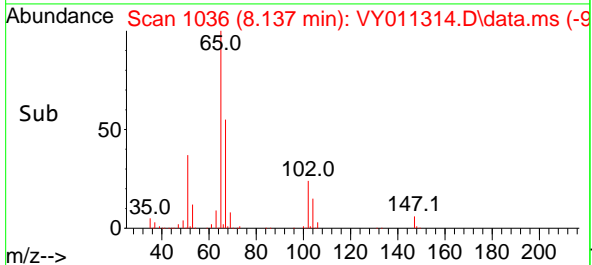
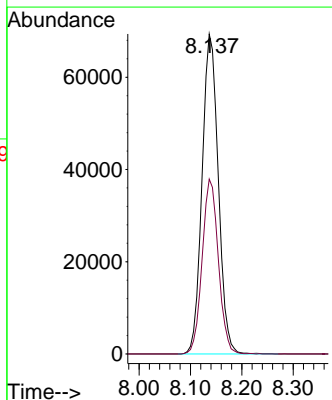
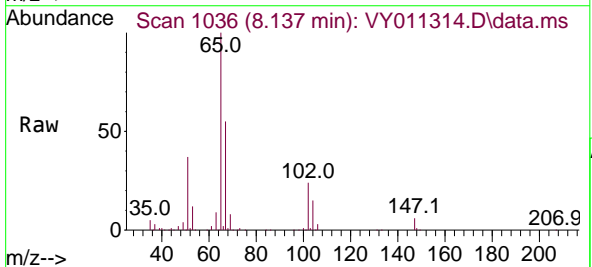


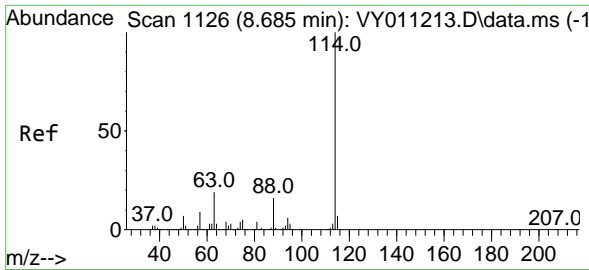
Tgt Ion: 77 Resp: 7295  
 Ion Ratio Lower Upper  
 77 100  
 97 0.0 10.4 31.4#



#33  
 1,2-Dichloroethane-d4  
 Concen: 57.843 ug/l  
 RT: 8.137 min Scan# 1036  
 Delta R.T. 0.001 min  
 Lab File: VY011314.D  
 Acq: 04 Nov 2022 21:40

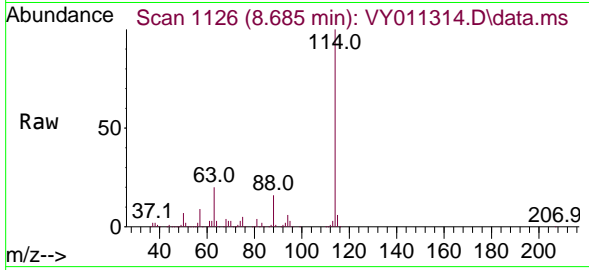
Tgt Ion: 65 Resp: 151872  
 Ion Ratio Lower Upper  
 65 100  
 67 54.5 0.0 99.4



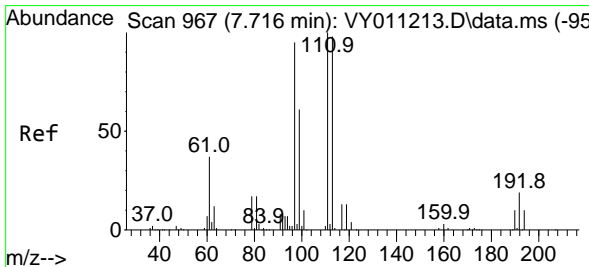
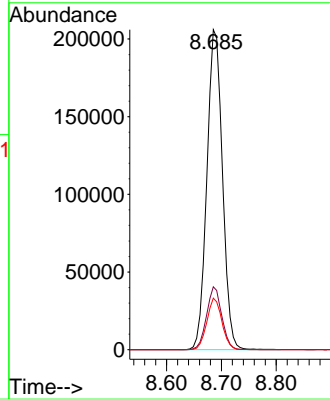
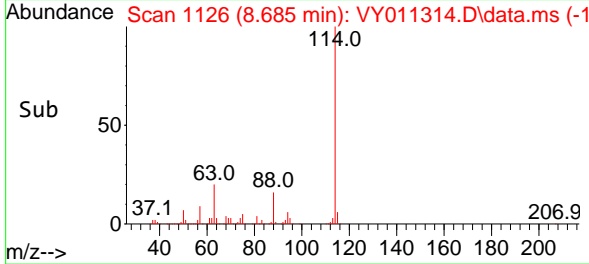


#34  
 1,4-Difluorobenzene  
 Concen: 50.000 ug/l  
 RT: 8.685 min Scan# 1126  
 Delta R.T. 0.000 min  
 Lab File: VY011314.D  
 Acq: 04 Nov 2022 21:40

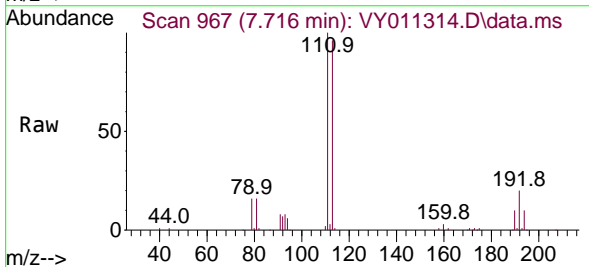
Instrument :  
 MSVOA\_Y  
 ClientSampleId :



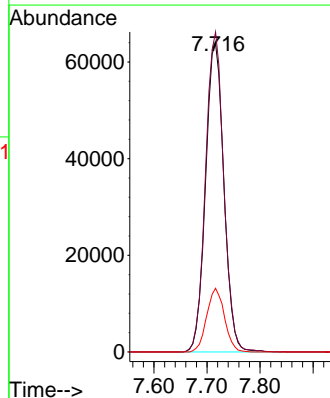
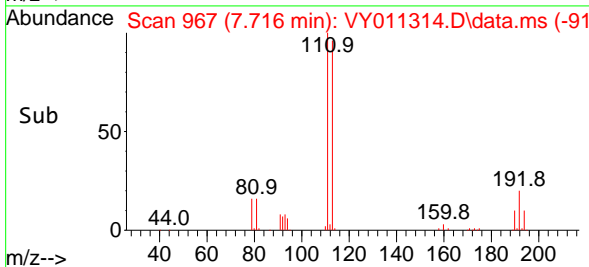
Tgt Ion:114 Resp: 405416  
 Ion Ratio Lower Upper  
 114 100  
 63 19.6 0.0 43.2  
 88 16.1 0.0 31.8

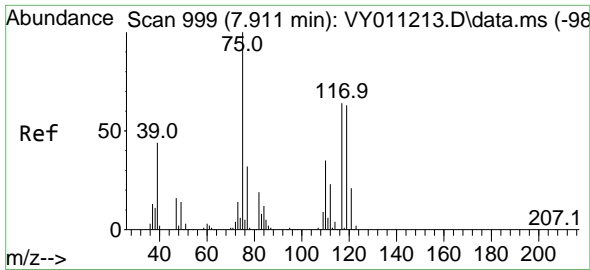


#35  
 Dibromofluoromethane  
 Concen: 58.904 ug/l  
 RT: 7.716 min Scan# 967  
 Delta R.T. 0.006 min  
 Lab File: VY011314.D  
 Acq: 04 Nov 2022 21:40



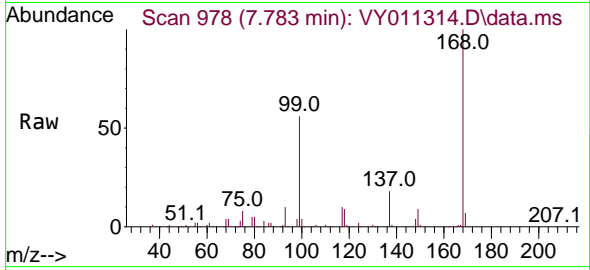
Tgt Ion:113 Resp: 153432  
 Ion Ratio Lower Upper  
 113 100  
 111 102.9 82.6 124.0  
 192 19.9 17.6 26.4



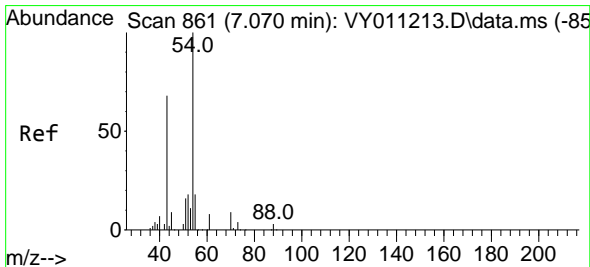
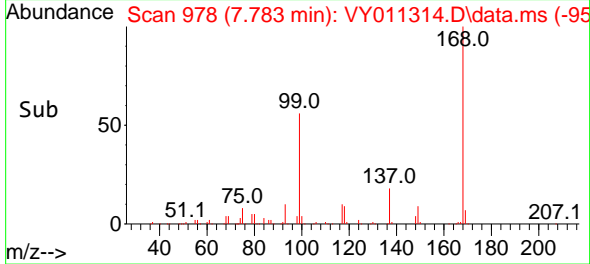
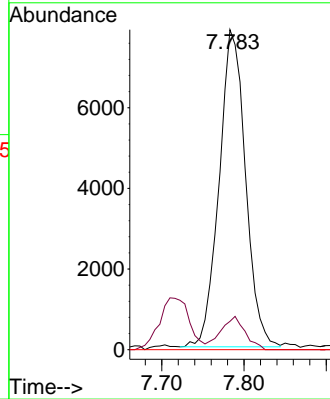


#36  
 1,1-Dichloropropene  
 Concen: 4.112 ug/l  
 RT: 7.783 min Scan# 911  
 Delta R.T. -0.134 min  
 Lab File: VY011314.D  
 Acq: 04 Nov 2022 21:40

Instrument : MSVOA\_Y  
 ClientSampleId :

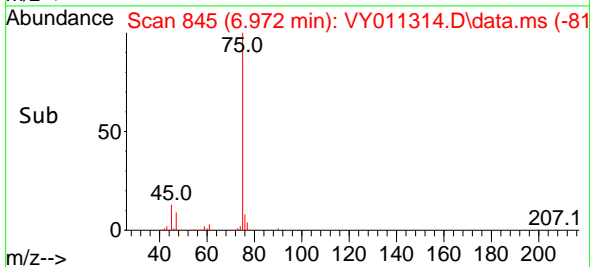
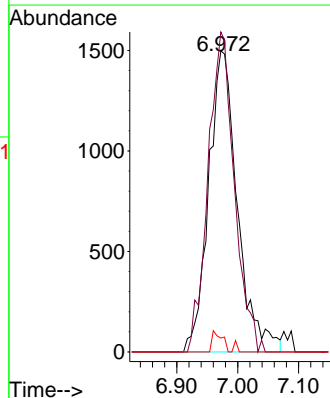
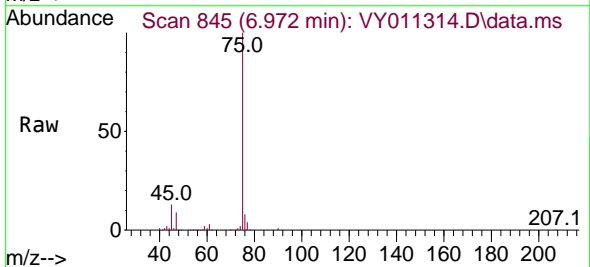


Tgt Ion: 75 Resp: 17493  
 Ion Ratio Lower Upper  
 75 100  
 110 9.7 17.1 51.2#  
 77 0.0 24.4 36.6#

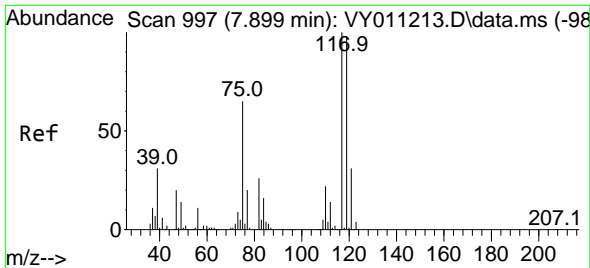


#37  
 Ethyl Acetate  
 Concen: 2.143 ug/l  
 RT: 6.972 min Scan# 845  
 Delta R.T. -0.098 min  
 Lab File: VY011314.D  
 Acq: 04 Nov 2022 21:40

Tgt Ion: 43 Resp: 4914  
 Ion Ratio Lower Upper  
 43 100  
 61 96.9 9.7 14.5#  
 70 2.4 7.1 10.7#

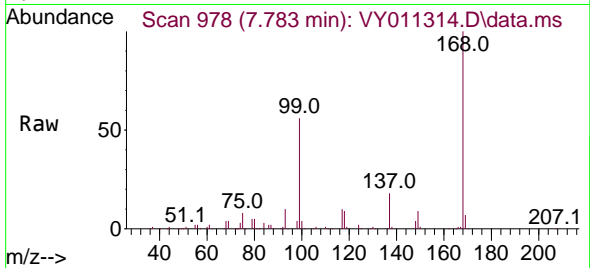




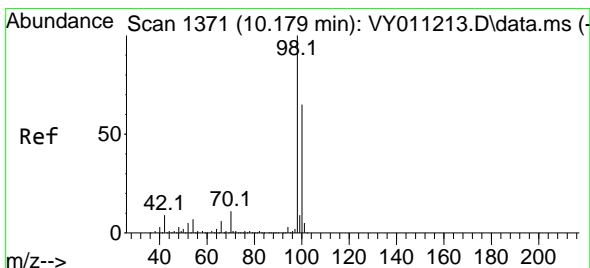
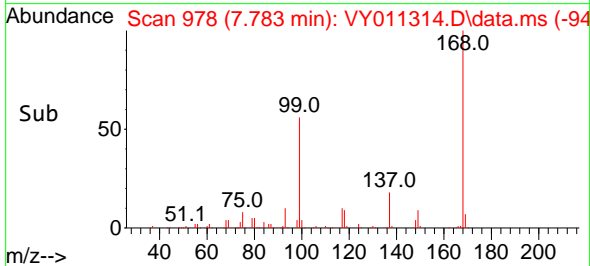
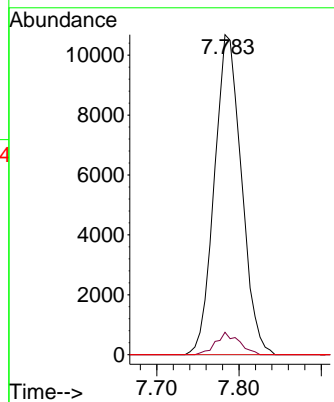


#38  
 Carbon Tetrachloride  
 Concen: 5.537 ug/l  
 RT: 7.783 min Scan# 91  
 Delta R.T. -0.116 min  
 Lab File: VY011314.D  
 Acq: 04 Nov 2022 21:40

Instrument :  
 MSVOA\_Y  
 ClientSampleId :

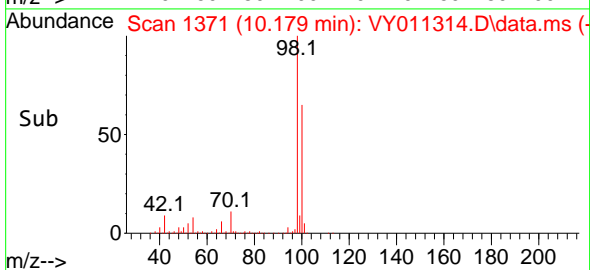
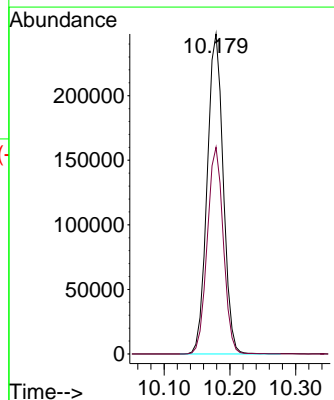
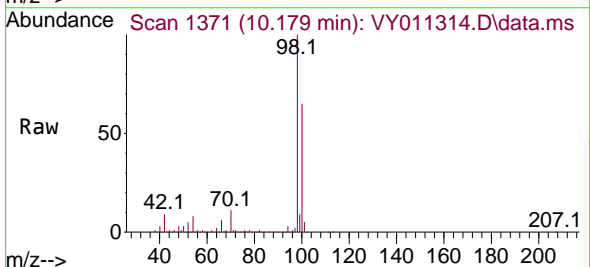


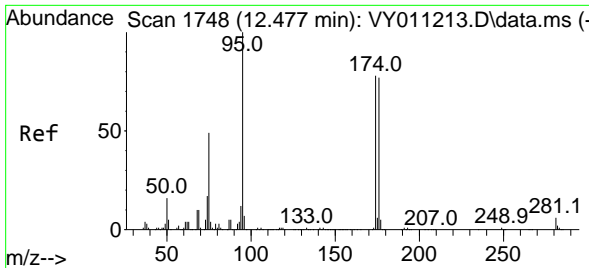
Tgt Ion:117 Resp: 24437  
 Ion Ratio Lower Upper  
 117 100  
 119 7.0 77.9 116.9#  
 121 0.0 24.8 37.2#



#50  
 Toluene-d8  
 Concen: 41.504 ug/l  
 RT: 10.179 min Scan# 1371  
 Delta R.T. -0.000 min  
 Lab File: VY011314.D  
 Acq: 04 Nov 2022 21:40

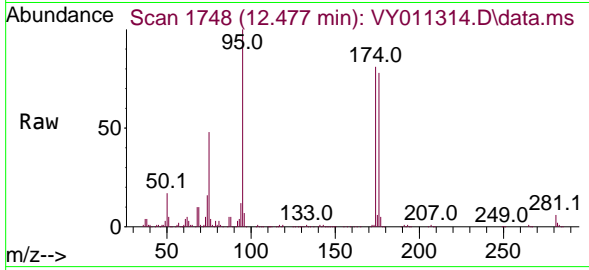
Tgt Ion: 98 Resp: 419741  
 Ion Ratio Lower Upper  
 98 100  
 100 64.8 50.2 75.2



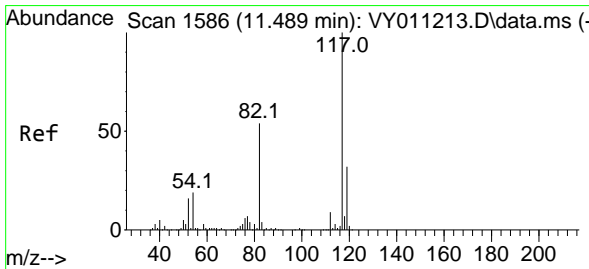
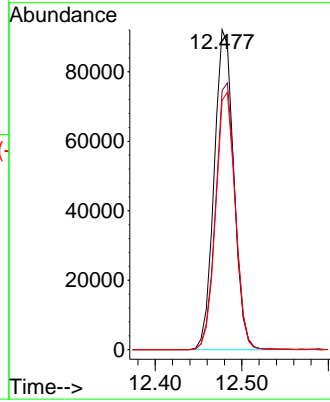
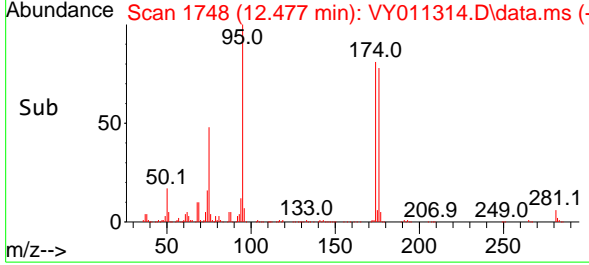


#62  
 4-Bromofluorobenzene  
 Concen: 41.185 ug/l  
 RT: 12.477 min Scan# 11  
 Delta R.T. -0.006 min  
 Lab File: VY011314.D  
 Acq: 04 Nov 2022 21:40

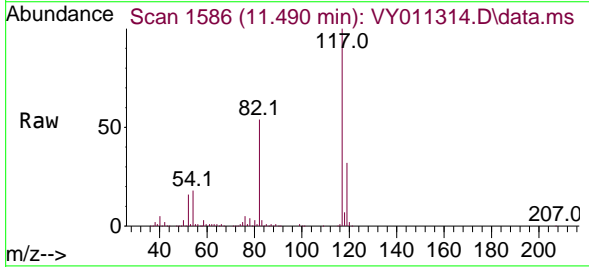
Instrument :  
 MSVOA\_Y  
 ClientSampleId :



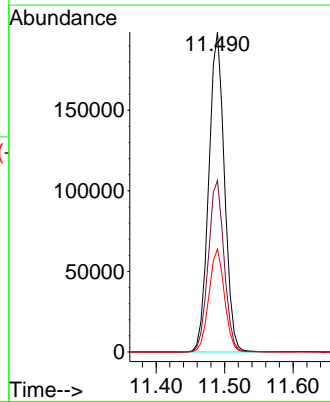
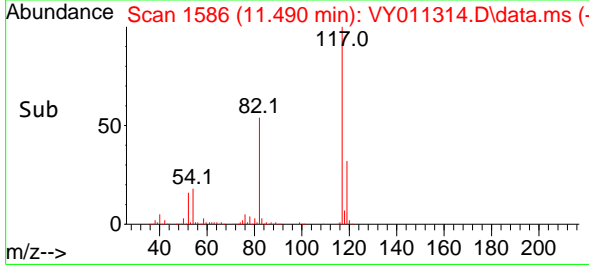
Tgt Ion: 95 Resp: 144598  
 Ion Ratio Lower Upper  
 95 100  
 174 83.5 0.0 177.0  
 176 80.3 0.0 175.8

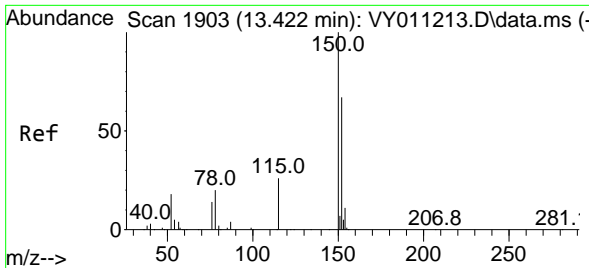


#63  
 Chlorobenzene-d5  
 Concen: 50.000 ug/l  
 RT: 11.490 min Scan# 1586  
 Delta R.T. -0.000 min  
 Lab File: VY011314.D  
 Acq: 04 Nov 2022 21:40



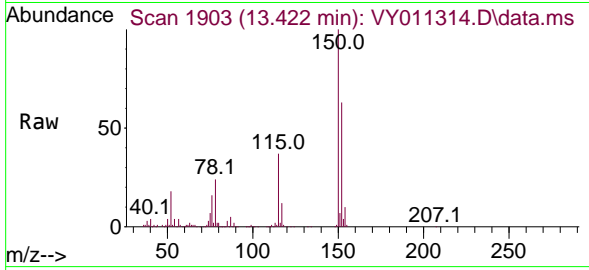
Tgt Ion: 117 Resp: 315773  
 Ion Ratio Lower Upper  
 117 100  
 82 53.5 43.0 64.4  
 119 32.1 25.4 38.0



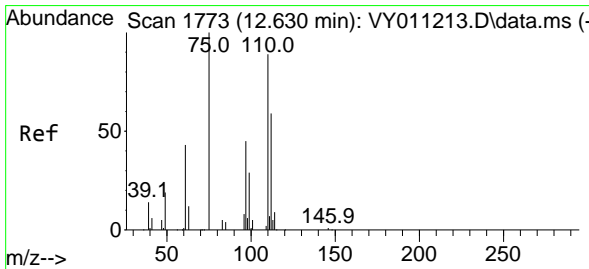
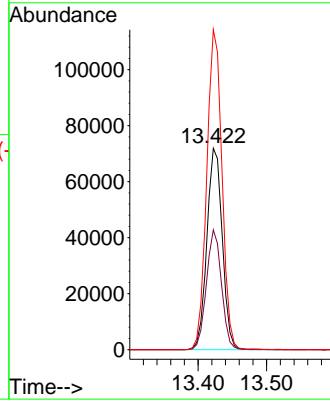
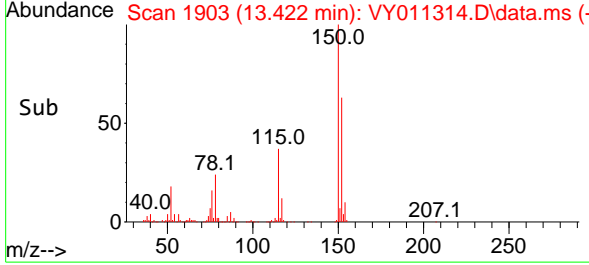


#72  
 1,4-Dichlorobenzene-d4  
 Concen: 50.000 ug/l  
 RT: 13.422 min Scan# 1903  
 Delta R.T. 0.000 min  
 Lab File: VY011314.D  
 Acq: 04 Nov 2022 21:40

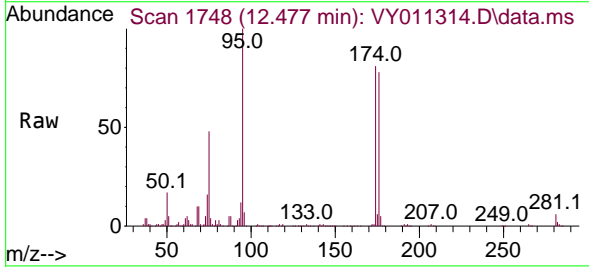
Instrument : MSVOA\_Y  
 ClientSampleId :



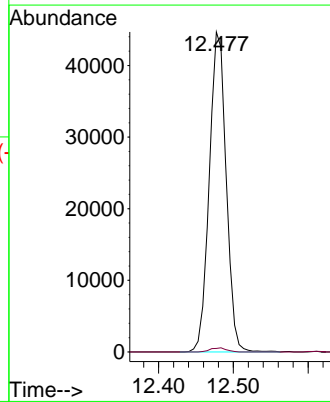
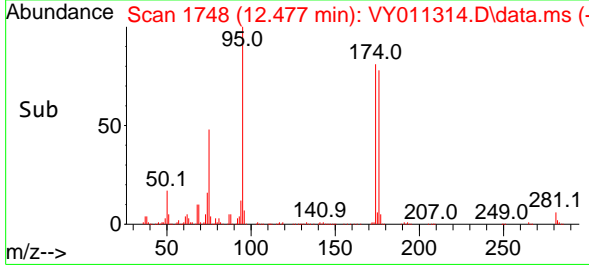
Tgt Ion:152 Resp: 112592  
 Ion Ratio Lower Upper  
 152 100  
 115 58.2 28.2 84.7  
 150 157.0 0.0 347.6

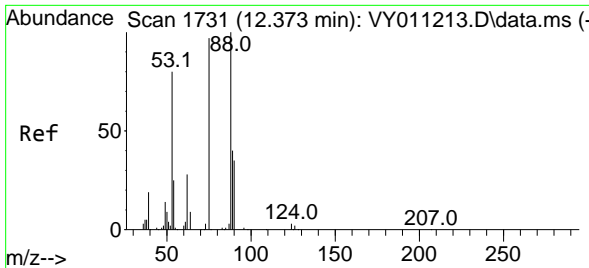


#76  
 1,2,3-Trichloropropane  
 Concen: 51.160 ug/l  
 RT: 12.477 min Scan# 1748  
 Delta R.T. -0.153 min  
 Lab File: VY011314.D  
 Acq: 04 Nov 2022 21:40



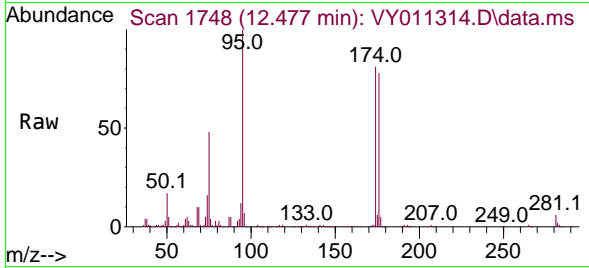
Tgt Ion: 75 Resp: 70125  
 Ion Ratio Lower Upper  
 75 100  
 77 1.2 0.0 0.0#





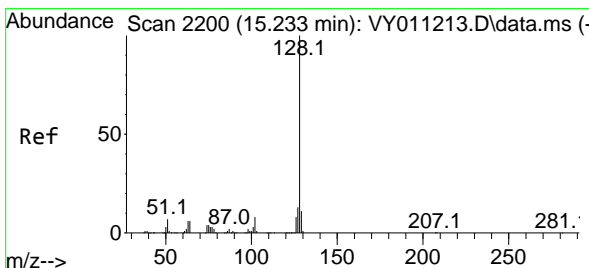
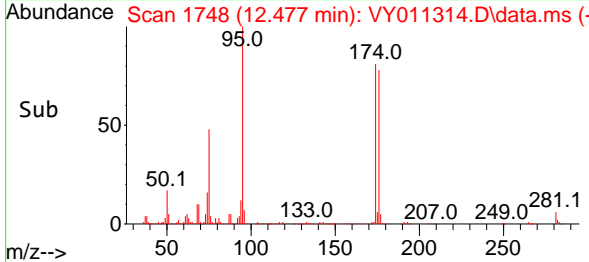
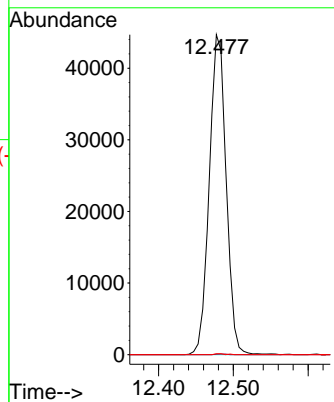
#81  
 trans-1,4-Dichloro-2-butene  
 Concen: 109.488 ug/l  
 RT: 12.477 min Scan# 1748  
 Delta R.T. 0.097 min  
 Lab File: VY011314.D  
 Acq: 04 Nov 2022 21:40

Instrument : MSVOA\_Y  
 ClientSampled :



Tgt Ion: 75 Resp: 70125

Ion	Ratio	Lower	Upper
75	100		
53	0.1	85.3	127.9#
89	0.2	37.0	55.4#



#95  
 Naphthalene  
 Concen: 3.987 ug/l  
 RT: 15.233 min Scan# 2200  
 Delta R.T. -0.000 min  
 Lab File: VY011314.D  
 Acq: 04 Nov 2022 21:40

Tgt Ion: 128 Resp: 102

Ion	Ratio	Lower	Upper
128	100		
127	0.0	11.0	16.4#
129	0.0	8.4	12.6#

