

Data Path : Z:\voasrv\HPCHEM1\MSVOA_Y\Data\VY110722\
 Data File : VY011339.D
 Acq On : 07 Nov 2022 16:48
 Operator : KP/MD
 Sample : N5495-11
 Misc : 5.07g/5.0mL/MSVOA_Y/SOIL
 ALS Vial : 19 Sample Multiplier: 1

Instrument :
 MSVOA_Y
 ClientSampleId :
 SB-14

Integration Parameters: RTEINT.P

Integrator: RTE
 Smoothing : ON Filtering: 5
 Sampling : 1 Min Area: 3 % of largest Peak
 Start Thrs: 0.2 Max Peaks: 100
 Stop Thrs : 0 Peak Location: TOP

If leading or trailing edge < 100 prefer < Baseline drop else tangent >
 Peak separation: 5

Method : Z:\voasrv\HPCHEM1\MSVOA_Y\methods\82Y110122S.M
 Title : SW846 8260

Signal : TIC: VY011339.D\data.ms

peak #	R.T. min	first scan	max scan	last scan	PK TY	peak height	corr. area	corr. % max.	% of total
1	2.503	107	112	114	rBV3	1393	2223	1.34%	0.217%
2	2.650	134	136	142	rVB4	927	1737	1.05%	0.169%
3	3.936	340	347	351	rBV5	833	1941	1.17%	0.189%
4	4.198	381	390	399	rVB3	1140	3556	2.14%	0.347%
5	4.710	465	474	484	rBV4	6549	19685	11.85%	1.921%
6	4.923	497	509	520	rBV4	1659	6376	3.84%	0.622%
7	5.740	634	643	652	rBV3	2504	7935	4.78%	0.774%
8	6.972	836	845	858	rBV	16612	51568	31.05%	5.031%
9	7.716	957	967	972	rBV	29037	70435	42.41%	6.872%
10	7.783	972	978	989	rVB	43107	99143	59.70%	9.673%
11	8.136	1023	1036	1048	rVB3	28176	71212	42.88%	6.948%
12	8.685	1117	1126	1136	rBV	59008	116704	70.28%	11.386%
13	10.179	1364	1371	1383	rVB	96448	166066	100.00%	16.202%
14	10.575	1430	1436	1445	rBV2	8468	15823	9.53%	1.544%
15	10.941	1491	1496	1506	rVB	8581	14858	8.95%	1.450%
16	11.313	1553	1557	1565	rVB2	5500	8907	5.36%	0.869%
17	11.489	1577	1586	1598	rBV	80464	129659	78.08%	12.650%
18	12.483	1743	1749	1757	rBV2	70701	119815	72.15%	11.690%
19	12.818	1798	1804	1809	rBV3	1506	2354	1.42%	0.230%
20	13.422	1894	1903	1912	rBV	67595	106744	64.28%	10.414%
21	13.958	1986	1991	1997	rVB3	1470	2647	1.59%	0.258%
22	15.312	2207	2213	2218	rBV3	3327	5575	3.36%	0.544%

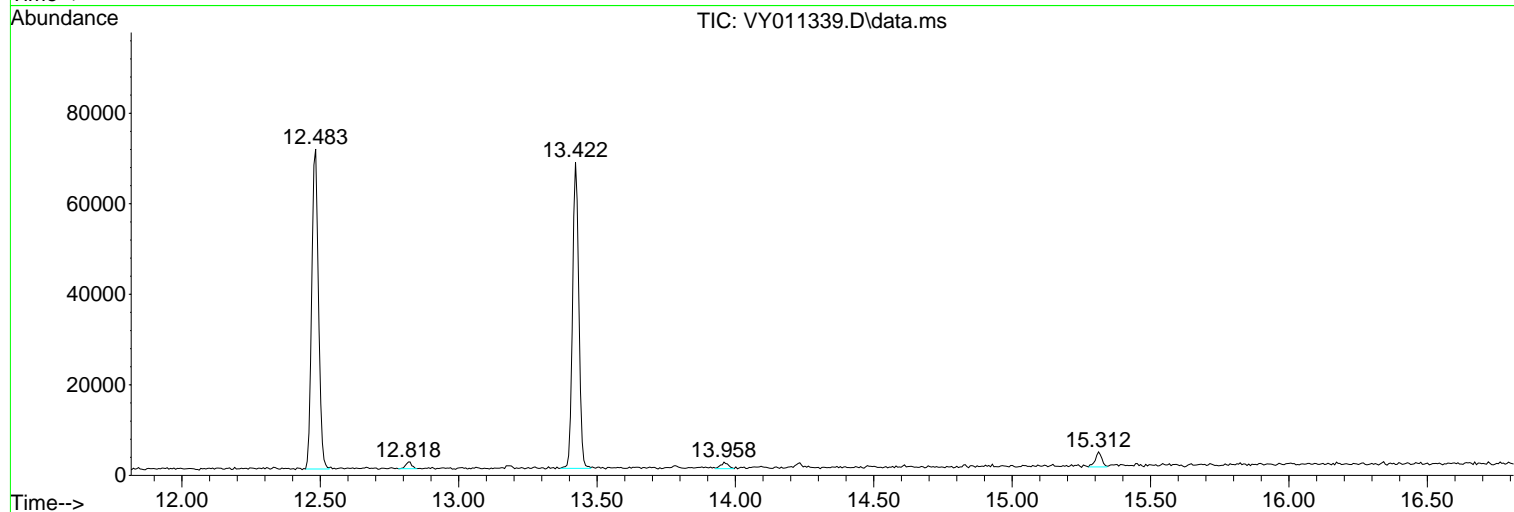
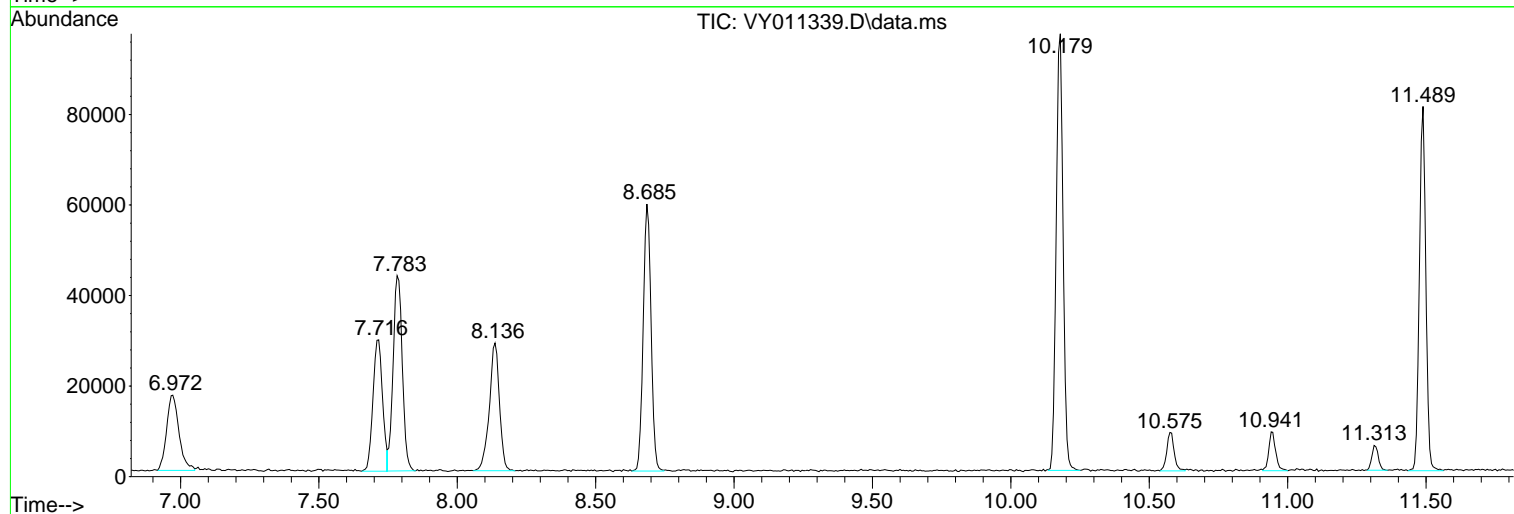
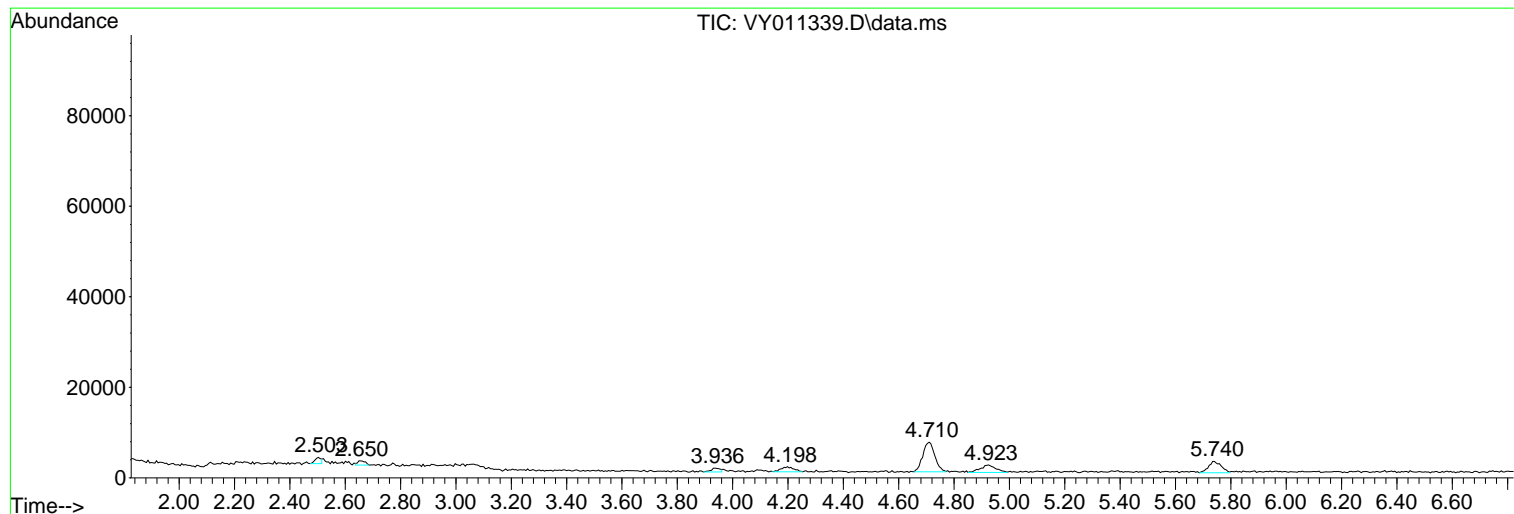
Sum of corrected areas: 1024963

Data Path : Z:\voasrv\HPCHEM1\MSVOA_Y\Data\VY110722\
Data File : VY011339.D
Acq On : 07 Nov 2022 16:48
Operator : KP/MD
Sample : N5495-11
Misc : 5.07g/5.0mL/MSVOA_Y/SOIL
ALS Vial : 19 Sample Multiplier: 1

Instrument :
MSVOA_Y
ClientSampleId :
SB-14

Quant Method : Z:\voasrv\HPCHEM1\MSVOA_Y\methods\82Y110122S.M
Quant Title : SW846 8260

TIC Library : C:\Database\NIST20.L
TIC Integration Parameters: LSCINT.P



Library Search Compound Report

Data Path : Z:\voasrv\HPCHEM1\MSVOA_Y\Data\VY110722\
Data File : VY011339.D
Acq On : 07 Nov 2022 16:48
Operator : KP/MD
Sample : N5495-11
Misc : 5.07g/5.0mL/MSVOA_Y/SOIL
ALS Vial : 19 Sample Multiplier: 1

Instrument :
MSVOA_Y
ClientSampleId :
SB-14

Quant Method : Z:\voasrv\HPCHEM1\MSVOA_Y\methods\82Y110122S.M
Quant Title : SW846 8260

TIC Library : C:\Database\NIST20.L
TIC Integration Parameters: LSCINT.P

No Library Search Compounds Detected

Data Path : Z:\voasrv\HPCHEM1\MSVOA_Y\Data\VY110722\
Data File : VY011339.D
Acq On : 07 Nov 2022 16:48
Operator : KP/MD
Sample : N5495-11
Misc : 5.07g/5.0mL/MSVOA_Y/SOIL
ALS Vial : 19 Sample Multiplier: 1

Instrument :
MSVOA_Y
ClientSampleId :
SB-14

Quant Method : Z:\voasrv\HPCHEM1\MSVOA_Y\methods\82Y110122S.M
Quant Title : SW846 8260

TIC Library : C:\Database\NIST0.L
TIC Integration Parameters: LSCINT.P

TIC Top Hit name	RT	EstConc	Units	Response	--Internal Standard--			
					#	RT	Resp	Conc
