

Data Path : Z:\voasrv\HPCHEM1\MSVOA_Y\Data\VY110725\
 Data File : VY023709.D
 Acq On : 07 Nov 2025 15:29
 Operator : SY/MD
 Sample : Q3580-01
 Misc : 5.71g/5.0mL/MSVOA_Y/SOIL/A
 ALS Vial : 7 Sample Multiplier: 1

Instrument :
 MSVOA_Y
 ClientSampleId :
 346

Quant Time: Nov 08 03:28:34 2025
 Quant Method : Z:\voasrv\HPCHEM1\MSVOA_Y\methods\82Y110425S.M
 Quant Title : SW846 8260
 QLast Update : Wed Nov 05 04:41:50 2025
 Response via : Initial Calibration

Compound	R.T.	QIon	Response	Conc	Units	Dev(Min)

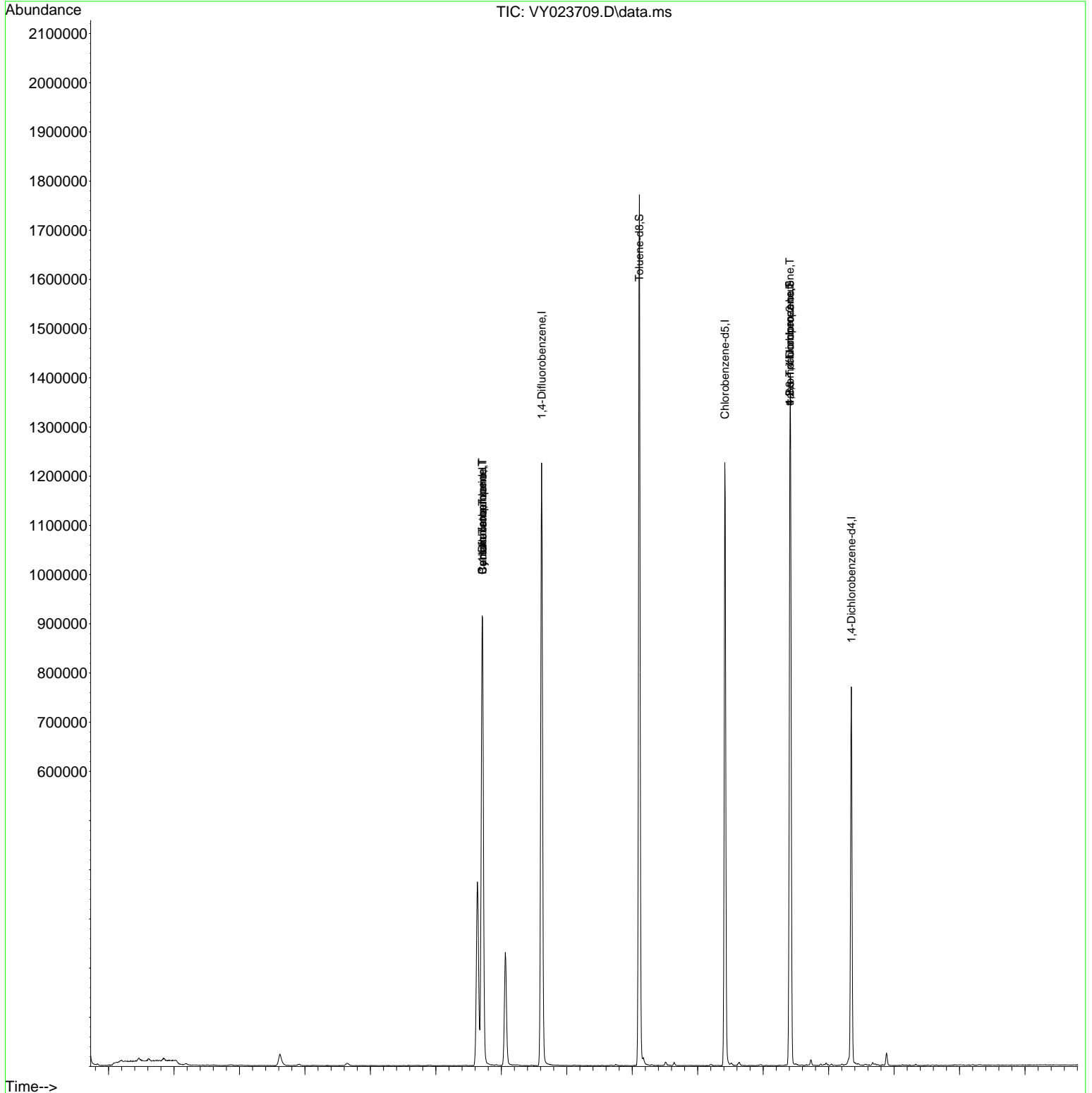
Internal Standards						
1) Pentafluorobenzene	7.713	168	762740	50.000	ug/l	0.00
34) 1,4-Difluorobenzene	8.616	114	1105415	50.000	ug/l	0.00
63) Chlorobenzene-d5	11.414	117	690272	50.000	ug/l	0.00
72) 1,4-Dichlorobenzene-d4	13.346	152	205694	50.000	ug/l	0.00
System Monitoring Compounds						
33) 1,2-Dichloroethane-d4	8.061	65	181018	27.822	ug/l	0.00
Spiked Amount	50.000	Range 50 - 163	Recovery	=	55.640%	
35) Dibromofluoromethane	7.634	113	274375	39.718	ug/l	0.00
Spiked Amount	50.000	Range 54 - 147	Recovery	=	79.440%	
50) Toluene-d8	10.109	98	1155674	44.910	ug/l	0.00
Spiked Amount	50.000	Range 58 - 134	Recovery	=	89.820%	
62) 4-Bromofluorobenzene	12.408	95	227125	27.292	ug/l	0.00
Spiked Amount	50.000	Range 30 - 143	Recovery	=	54.580%	
Target Compounds						
						Qvalue
16) Acetone	3.872	43	2306	1.426	ug/l #	34
20) Methylene Chloride	4.622	84	17500	2.241	ug/l	95
31) Cyclohexane	7.713	56	13888	1.295	ug/l #	6
36) 1,1-Dichloropropene	7.707	75	53031	5.745	ug/l #	48
38) Carbon Tetrachloride	7.713	117	71625	6.585	ug/l #	16
49) 1,4-Dioxane	8.993	88	64	1.572	ug/l #	1
76) 1,2,3-Trichloropropane	12.408	75	117803	70.765	ug/l #	100
81) trans-1,4-Dichloro-2-b...	12.408	75	117803	159.925	ug/l #	15
95) Naphthalene	15.145	128	978	5.407	ug/l #	69

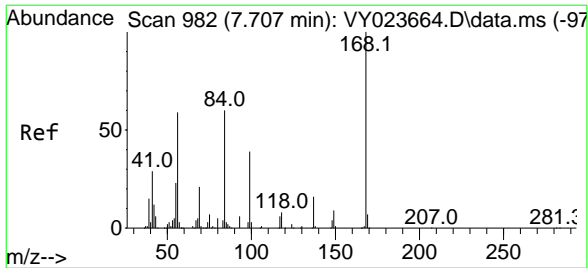
(#) = qualifier out of range (m) = manual integration (+) = signals summed

Data Path : Z:\voasrv\HPCHEM1\MSVOA_Y\Data\VY110725\
 Data File : VY023709.D
 Acq On : 07 Nov 2025 15:29
 Operator : SY/MD
 Sample : Q3580-01
 Misc : 5.71g/5.0mL/MSVOA_Y/SOIL/A
 ALS Vial : 7 Sample Multiplier: 1

Instrument :
 MSVOA_Y
 ClientSampleId :
 346

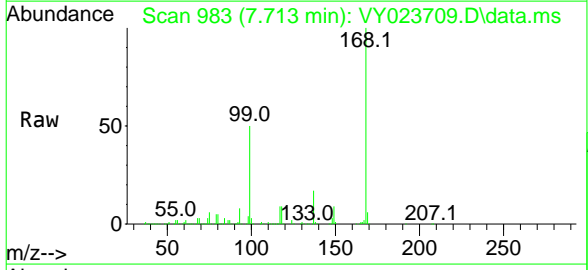
Quant Time: Nov 08 03:28:34 2025
 Quant Method : Z:\voasrv\HPCHEM1\MSVOA_Y\methods\82Y110425S.M
 Quant Title : SW846 8260
 QLast Update : Wed Nov 05 04:41:50 2025
 Response via : Initial Calibration



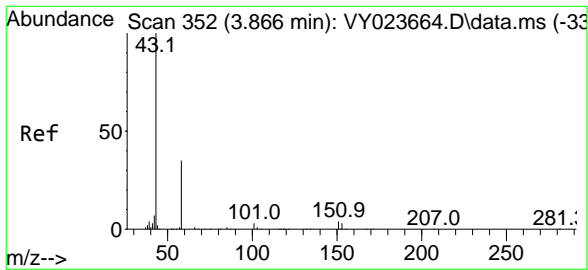
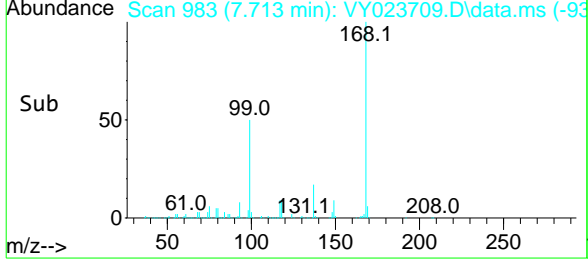
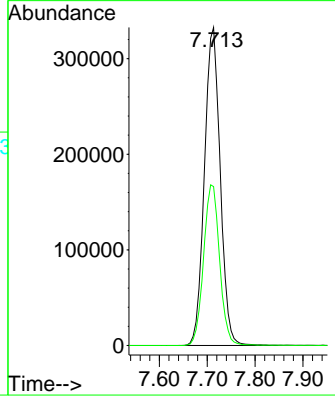


#1
 Pentafluorobenzene
 Concen: 50.000 ug/l
 RT: 7.713 min Scan# 98
 Delta R.T. 0.006 min
 Lab File: VY023709.D
 Acq: 07 Nov 2025 15:29

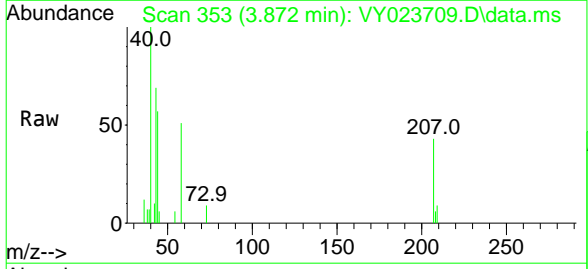
Instrument : MSVOA_Y
 ClientSampleId : 346



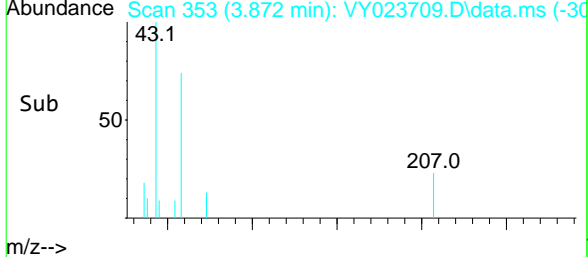
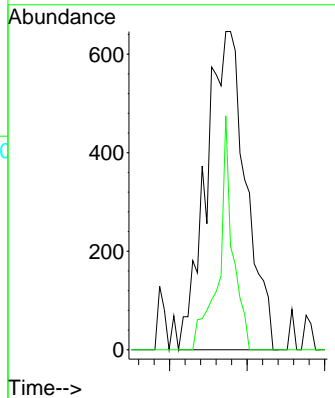
Tgt Ion:168 Resp: 762740
 Ion Ratio Lower Upper
 168 100
 99 50.0 41.0 61.4

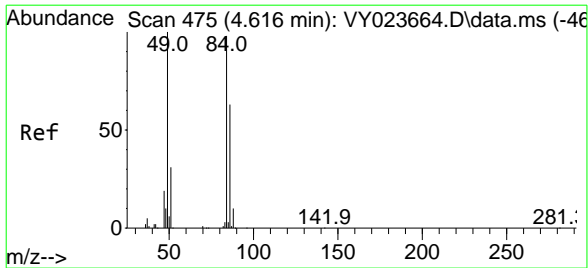


#16
 Acetone
 Concen: 1.426 ug/l
 RT: 3.872 min Scan# 353
 Delta R.T. 0.006 min
 Lab File: VY023709.D
 Acq: 07 Nov 2025 15:29



Tgt Ion: 43 Resp: 2306
 Ion Ratio Lower Upper
 43 100
 58 73.5 28.2 42.4#

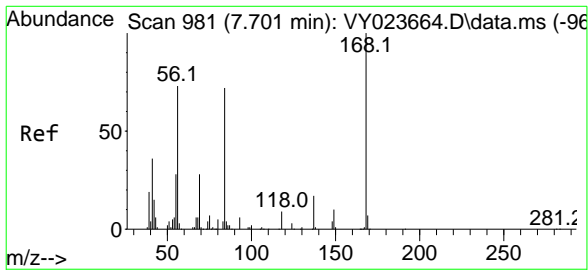
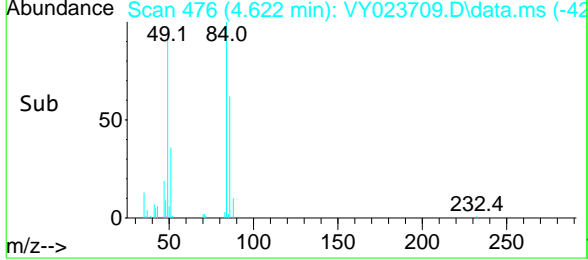
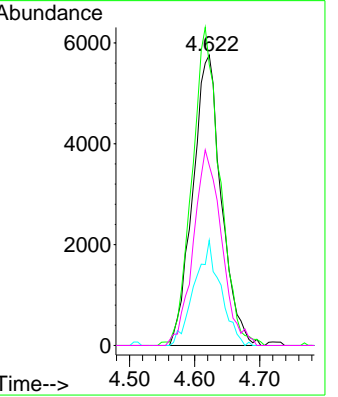
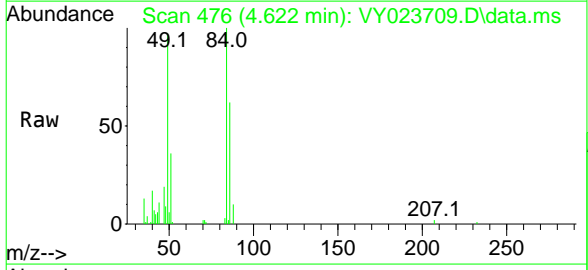




#20
 Methylene Chloride
 Concen: 2.241 ug/l
 RT: 4.622 min Scan# 47
 Delta R.T. 0.006 min
 Lab File: VY023709.D
 Acq: 07 Nov 2025 15:29

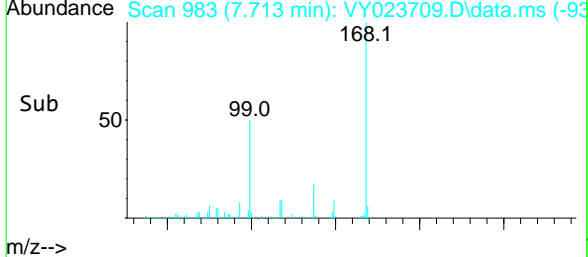
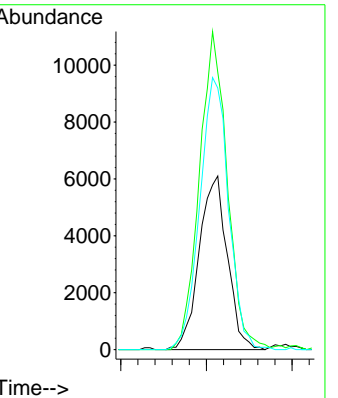
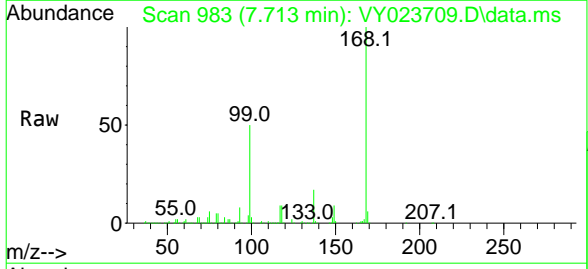
Instrument : MSVOA_Y
 ClientSampleId : 346

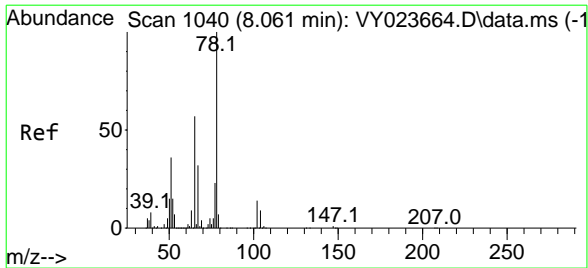
Tgt Ion	Ratio	Lower	Upper
84	100		
49	96.8	81.5	122.3
51	36.2	25.5	38.3
86	62.0	51.2	76.8



#31
 Cyclohexane
 Concen: 1.295 ug/l
 RT: 7.713 min Scan# 983
 Delta R.T. 0.012 min
 Lab File: VY023709.D
 Acq: 07 Nov 2025 15:29

Tgt Ion	Ratio	Lower	Upper
56	100		
69	159.8	30.5	45.7#
84	150.7	79.0	118.4#

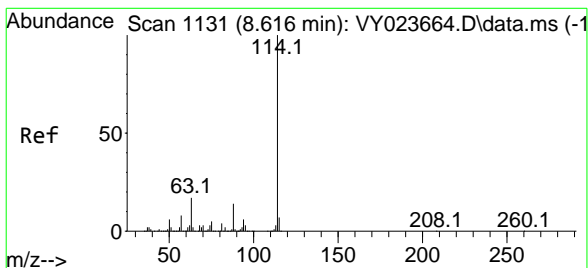
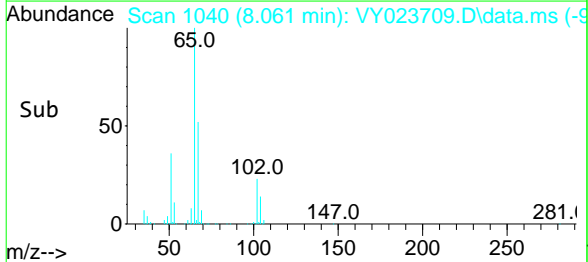
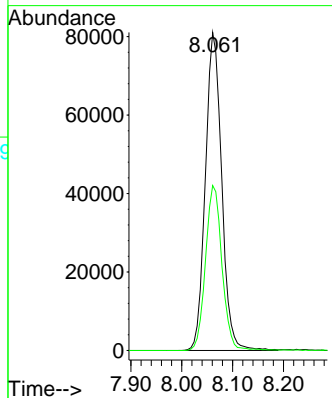
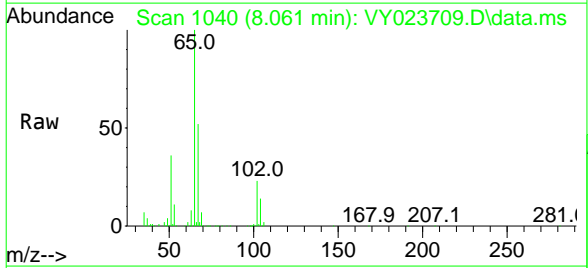




#33
 1,2-Dichloroethane-d4
 Concen: 27.822 ug/l
 RT: 8.061 min Scan# 1040
 Delta R.T. -0.000 min
 Lab File: VY023709.D
 Acq: 07 Nov 2025 15:29

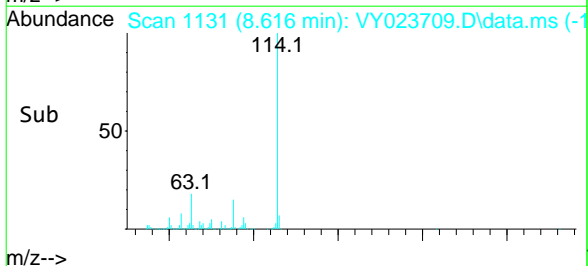
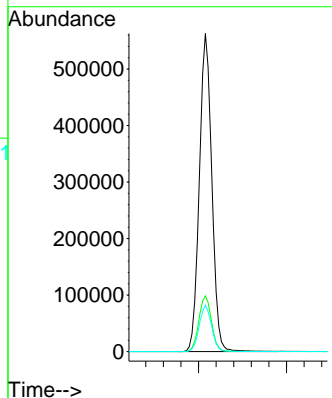
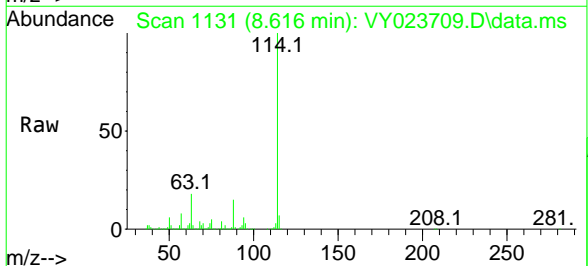
Instrument : MSVOA_Y
 ClientSampleId : 346

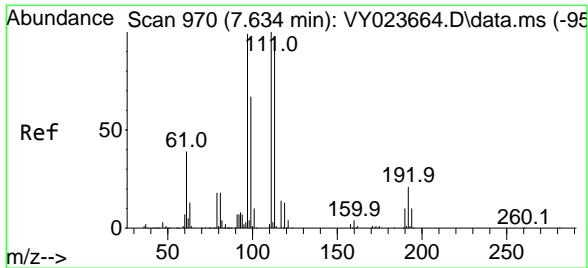
Tgt Ion: 65 Resp: 181018
 Ion Ratio Lower Upper
 65 100
 67 52.4 0.0 107.4



#34
 1,4-Difluorobenzene
 Concen: 50.000 ug/l
 RT: 8.616 min Scan# 1131
 Delta R.T. -0.000 min
 Lab File: VY023709.D
 Acq: 07 Nov 2025 15:29

Tgt Ion: 114 Resp: 1105415
 Ion Ratio Lower Upper
 114 100
 63 17.5 0.0 33.8
 88 14.6 0.0 29.0

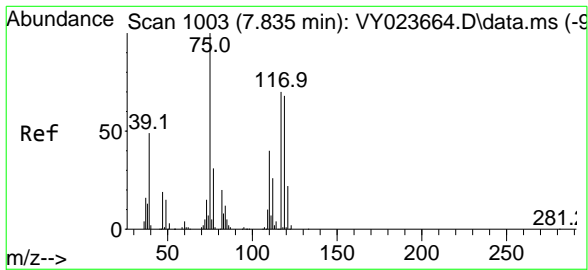
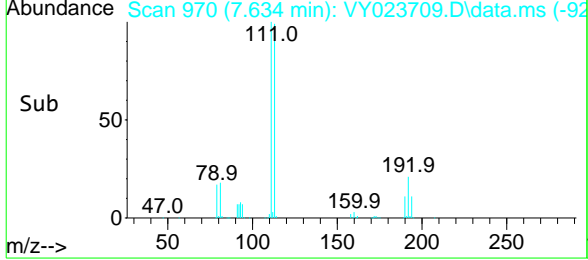
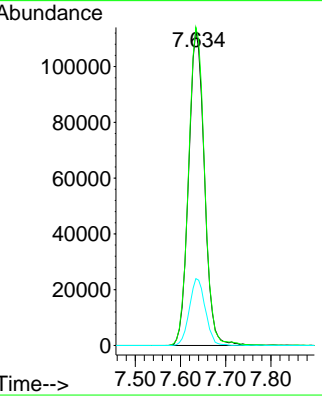
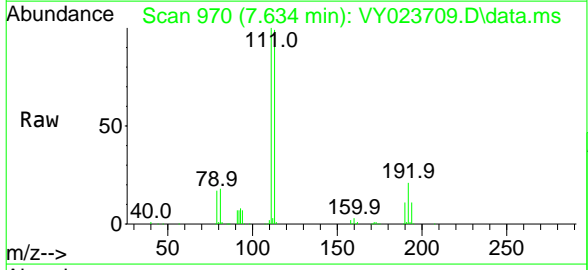




#35
 Dibromofluoromethane
 Concen: 39.718 ug/l
 RT: 7.634 min Scan# 971
 Delta R.T. -0.000 min
 Lab File: VY023709.D
 Acq: 07 Nov 2025 15:29

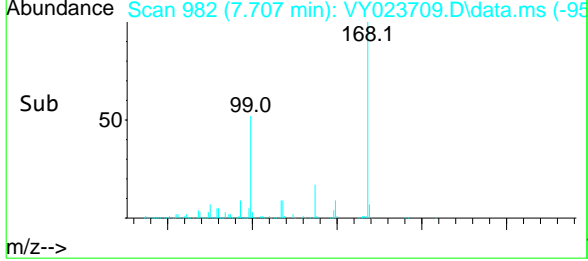
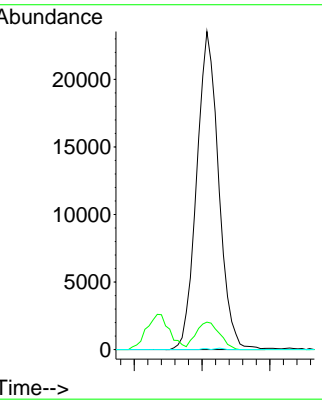
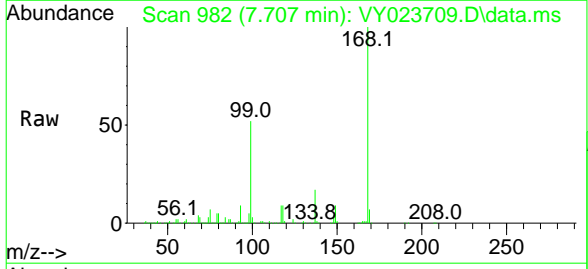
Instrument : MSVOA_Y
 ClientSampleId : 346

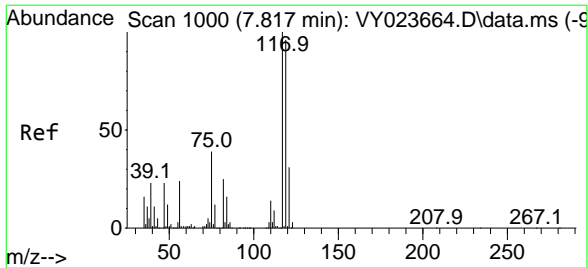
Tgt Ion	Resp	Lower	Upper
113	100		
111	102.3	82.2	123.4
192	21.4	17.3	25.9



#36
 1,1-Dichloropropene
 Concen: 5.745 ug/l
 RT: 7.707 min Scan# 982
 Delta R.T. -0.128 min
 Lab File: VY023709.D
 Acq: 07 Nov 2025 15:29

Tgt Ion	Resp	Lower	Upper
75	100		
110	9.3	19.7	59.0#
77	0.1	25.2	37.8#

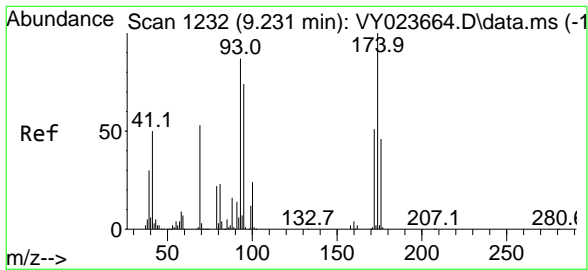
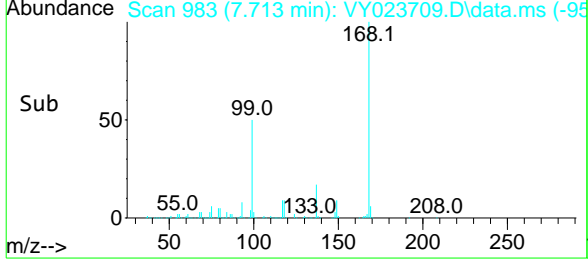
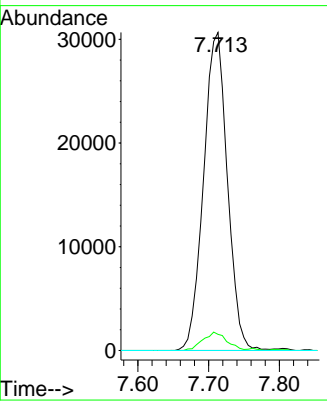
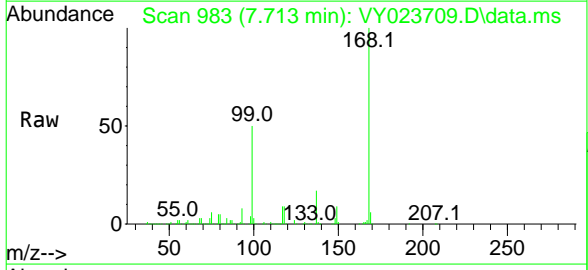




#38
 Carbon Tetrachloride
 Concen: 6.585 ug/l
 RT: 7.713 min Scan# 98
 Delta R.T. -0.104 min
 Lab File: VY023709.D
 Acq: 07 Nov 2025 15:29

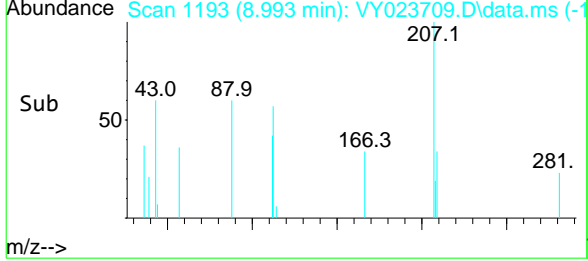
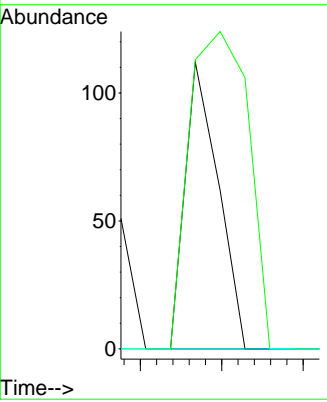
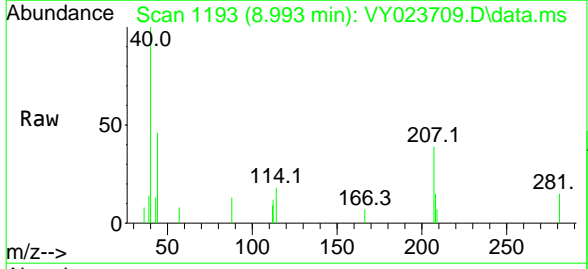
Instrument : MSVOA_Y
 ClientSampled : 346

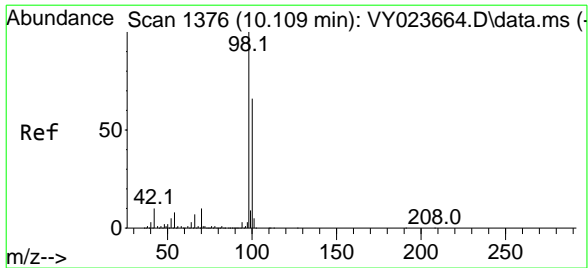
Tgt Ion	Resp	Lower	Upper
117	71625		
117	100		
119	5.1	76.3	114.5#
121	0.0	24.8	37.2#



#49
 1,4-Dioxane
 Concen: 1.572 ug/l
 RT: 8.993 min Scan# 1193
 Delta R.T. -0.238 min
 Lab File: VY023709.D
 Acq: 07 Nov 2025 15:29

Tgt Ion	Resp	Lower	Upper
88	64		
88	100		
43	195.3	22.0	33.0#
58	0.0	47.8	71.8#

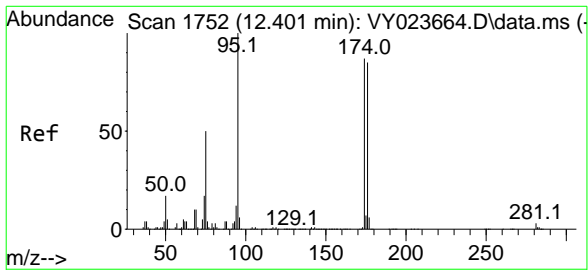
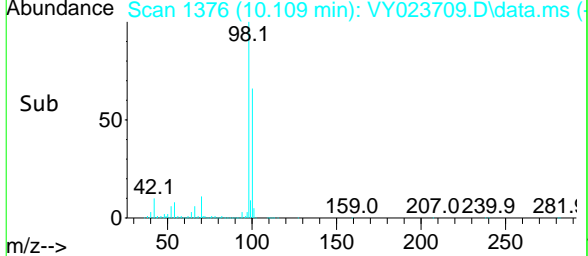
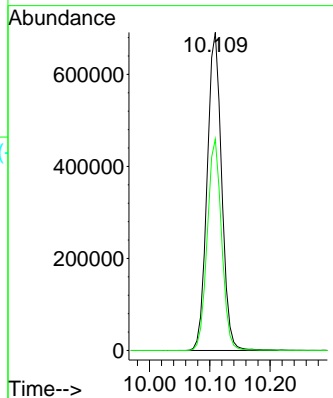
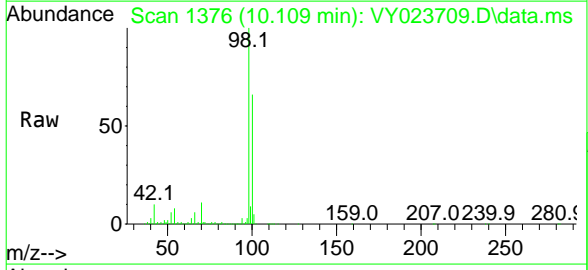




#50
 Toluene-d8
 Concen: 44.910 ug/l
 RT: 10.109 min Scan# 1376
 Delta R.T. -0.000 min
 Lab File: VY023709.D
 Acq: 07 Nov 2025 15:29

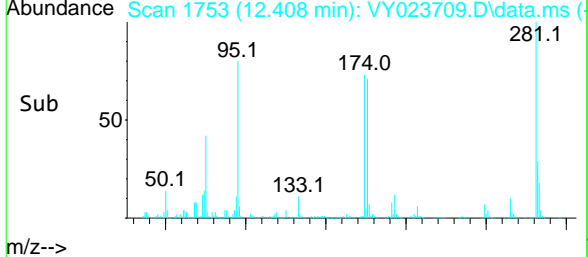
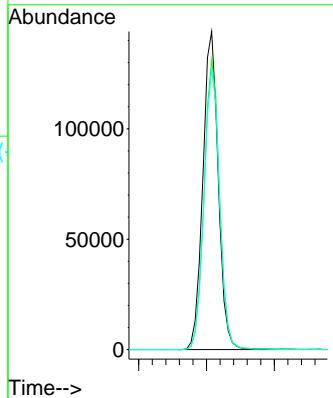
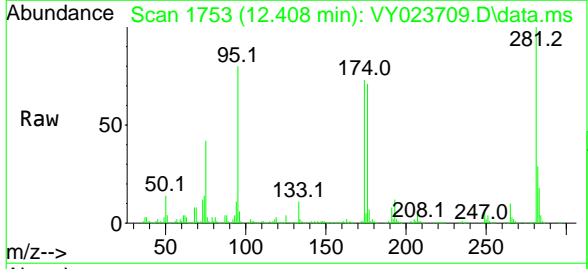
Instrument : MSVOA_Y
 ClientSampleId : 346

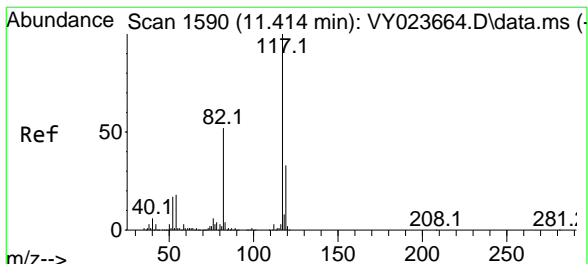
Tgt Ion: 98 Resp: 1155674
 Ion Ratio Lower Upper
 98 100
 100 65.7 52.7 79.1



#62
 4-Bromofluorobenzene
 Concen: 27.292 ug/l
 RT: 12.408 min Scan# 1753
 Delta R.T. 0.006 min
 Lab File: VY023709.D
 Acq: 07 Nov 2025 15:29

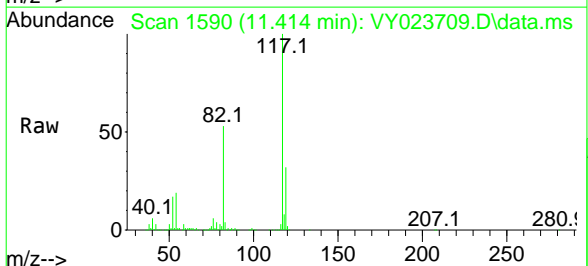
Tgt Ion: 95 Resp: 227125
 Ion Ratio Lower Upper
 95 100
 174 91.4 0.0 184.8
 176 88.8 0.0 181.6





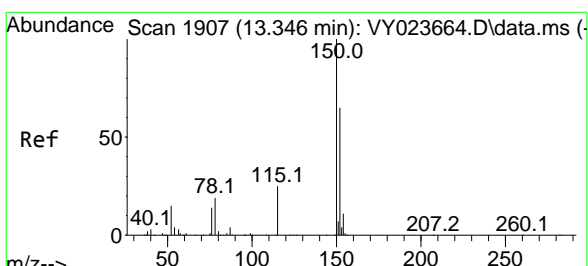
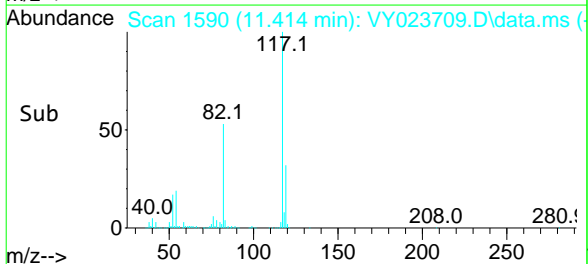
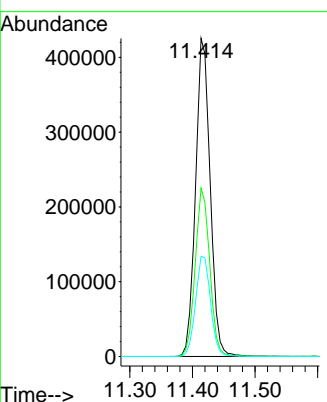
#63
 Chlorobenzene-d5
 Concen: 50.000 ug/l
 RT: 11.414 min Scan# 1519
 Delta R.T. -0.000 min
 Lab File: VY023709.D
 Acq: 07 Nov 2025 15:29

Instrument : MSVOA_Y
 ClientSampleId : 346



Tgt Ion:117 Resp: 690272

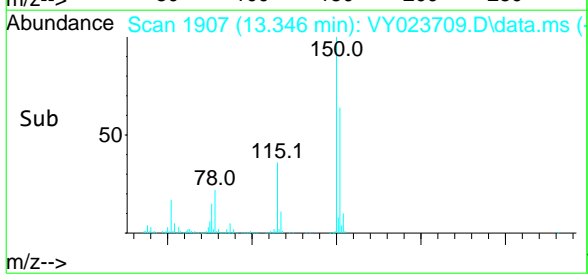
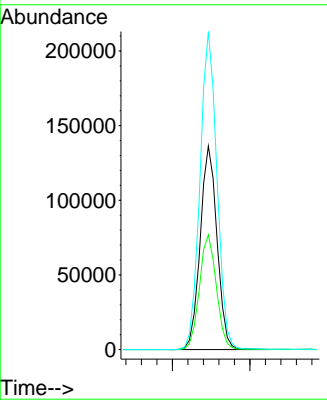
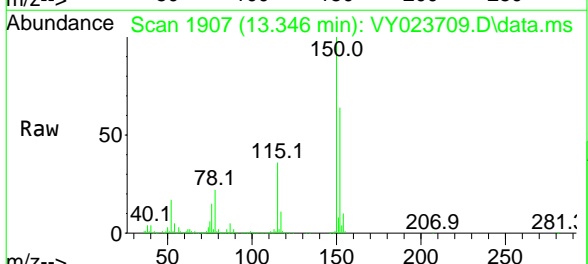
Ion	Ratio	Lower	Upper
117	100		
82	52.9	41.2	61.8
119	31.5	26.2	39.2

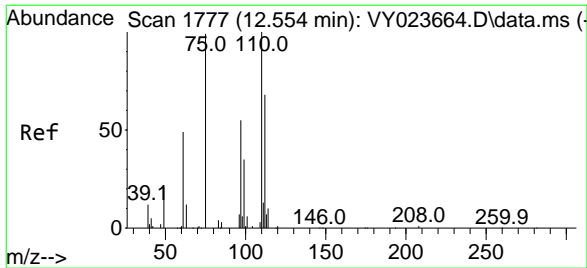


#72
 1,4-Dichlorobenzene-d4
 Concen: 50.000 ug/l
 RT: 13.346 min Scan# 1907
 Delta R.T. -0.000 min
 Lab File: VY023709.D
 Acq: 07 Nov 2025 15:29

Tgt Ion:152 Resp: 205694

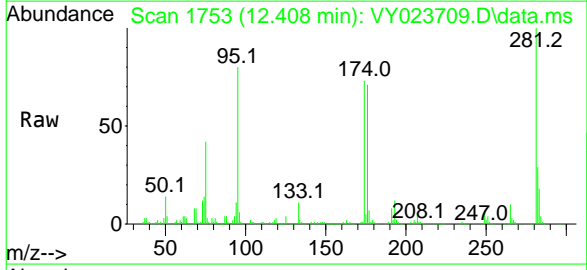
Ion	Ratio	Lower	Upper
152	100		
115	56.8	27.5	82.5
150	156.9	0.0	349.0



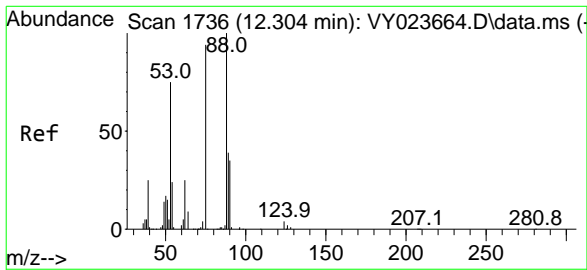
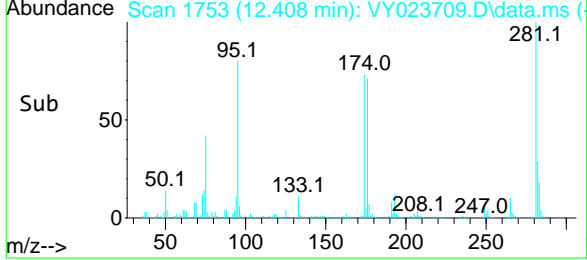
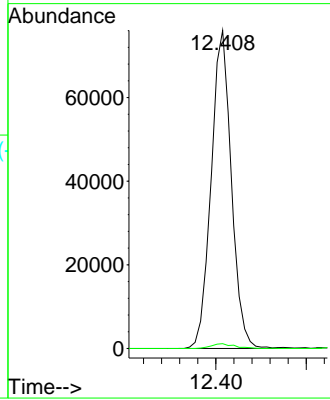


#76
 1,2,3-Trichloropropane
 Concen: 70.765 ug/l
 RT: 12.408 min Scan# 17
 Delta R.T. -0.146 min
 Lab File: VY023709.D
 Acq: 07 Nov 2025 15:29

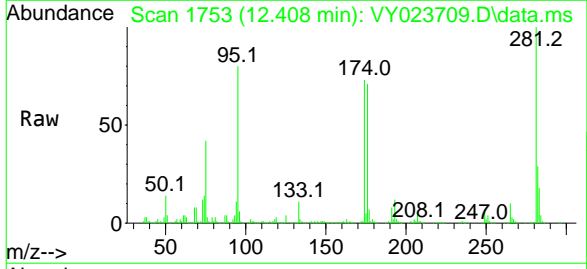
Instrument :
 MSVOA_Y
 ClientSampleId :
 346



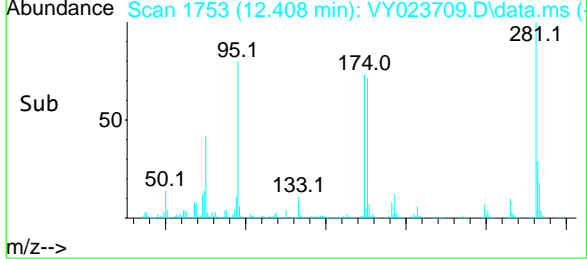
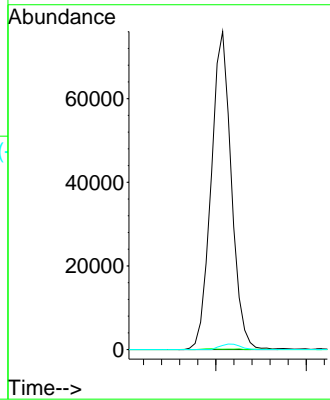
Tgt Ion: 75 Resp: 117803
 Ion Ratio Lower Upper
 75 100
 77 1.7 0.0 0.0#

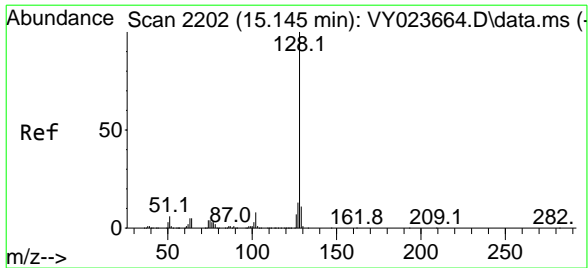


#81
 trans-1,4-Dichloro-2-butene
 Concen: 159.925 ug/l
 RT: 12.408 min Scan# 1753
 Delta R.T. 0.104 min
 Lab File: VY023709.D
 Acq: 07 Nov 2025 15:29



Tgt Ion: 75 Resp: 117803
 Ion Ratio Lower Upper
 75 100
 53 0.2 69.6 104.4#
 89 1.7 38.2 57.4#





#95
 Naphthalene
 Concen: 5.407 ug/l
 RT: 15.145 min Scan# 22
 Delta R.T. -0.000 min
 Lab File: VY023709.D
 Acq: 07 Nov 2025 15:29

Instrument : MSVOA_Y
 ClientSampleId : 346

Tgt Ion	Resp	Lower	Upper
128	978		
127	0.0	10.5	15.7#
129	0.0	8.8	13.2#

