

Data Path : Z:\voasrv\HPCHEM1\MSVOA\_Y\Data\VY112024\  
 Data File : VY020364.D  
 Acq On : 20 Nov 2024 17:01  
 Operator : SY/MD  
 Sample : P4870-06  
 Misc : 4.40g/5.0mL/MSVOA\_Y/SOIL/A  
 ALS Vial : 19 Sample Multiplier: 1

Instrument :  
 MSVOA\_Y  
 ClientSampleId :

Quant Time: Nov 21 00:50:30 2024  
 Quant Method : Z:\voasrv\HPCHEM1\MSVOA\_Y\methods\82Y111924S.M  
 Quant Title : SW846 8260  
 QLast Update : Wed Nov 20 04:38:24 2024  
 Response via : Initial Calibration

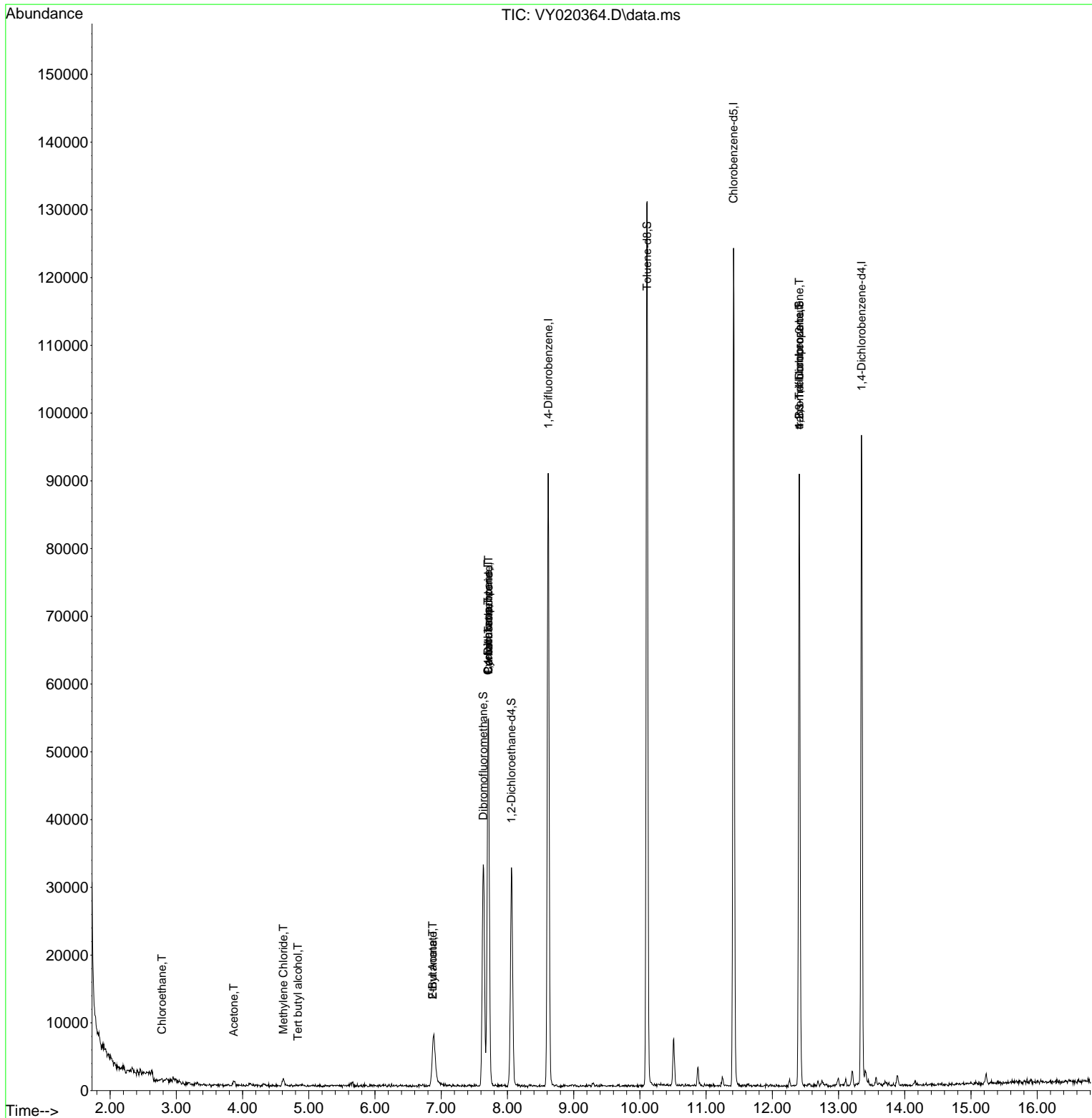
Compound	R.T.	QIon	Response	Conc	Units	Dev(Min)
-----						
Internal Standards						
1) Pentafluorobenzene	7.713	168	40332	50.000	ug/l	0.00
34) 1,4-Difluorobenzene	8.615	114	73830	50.000	ug/l	0.00
63) Chlorobenzene-d5	11.414	117	65009	50.000	ug/l	0.00
72) 1,4-Dichlorobenzene-d4	13.346	152	23052	50.000	ug/l	0.00
System Monitoring Compounds						
33) 1,2-Dichloroethane-d4	8.061	65	25860	55.809	ug/l	0.00
Spiked Amount	50.000	Range	50 - 163	Recovery	=	111.620%
35) Dibromofluoromethane	7.634	113	23904	50.492	ug/l	0.00
Spiked Amount	50.000	Range	54 - 147	Recovery	=	100.980%
50) Toluene-d8	10.109	98	85986	46.108	ug/l	0.00
Spiked Amount	50.000	Range	58 - 134	Recovery	=	92.220%
62) 4-Bromofluorobenzene	12.407	95	27431	45.756	ug/l	0.00
Spiked Amount	50.000	Range	29 - 146	Recovery	=	91.520%
Target Compounds						
					Qvalue	
6) Chloroethane	2.781	64	568	1.813	ug/l #	43
11) Tert butyl alcohol	4.836	59	212	5.122	ug/l #	73
16) Acetone	3.866	43	1200	10.803	ug/l #	81
20) Methylene Chloride	4.616	84	734	1.560	ug/l #	80
25) 2-Butanone	6.872	43	439	3.070	ug/l #	50
31) Cyclohexane	7.707	56	1055	1.221	ug/l #	40
36) 1,1-Dichloropropene	7.707	75	3561	4.925	ug/l #	53
37) Ethyl Acetate	6.872	43	439	1.325	ug/l #	1
38) Carbon Tetrachloride	7.713	117	4546	6.021	ug/l #	14
76) 1,2,3-Trichloropropane	12.407	75	15122	69.599	ug/l #	100
81) trans-1,4-Dichloro-2-b...	12.407	75	15122	136.377	ug/l #	9
-----						

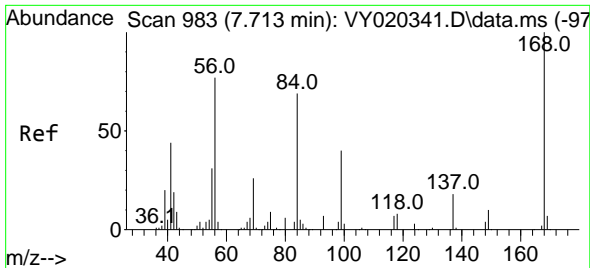
(#) = qualifier out of range (m) = manual integration (+) = signals summed

Data Path : Z:\voasrv\HPCHEM1\MSVOA\_Y\Data\VY112024\  
 Data File : VY020364.D  
 Acq On : 20 Nov 2024 17:01  
 Operator : SY/MD  
 Sample : P4870-06  
 Misc : 4.40g/5.0mL/MSVOA\_Y/SOIL/A  
 ALS Vial : 19 Sample Multiplier: 1

Instrument :  
 MSVOA\_Y  
 ClientSampleId :

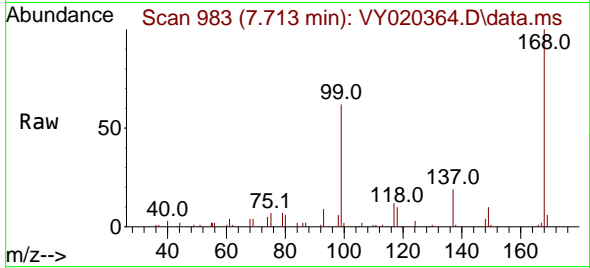
Quant Time: Nov 21 00:50:30 2024  
 Quant Method : Z:\voasrv\HPCHEM1\MSVOA\_Y\methods\82Y111924S.M  
 Quant Title : SW846 8260  
 QLast Update : Wed Nov 20 04:38:24 2024  
 Response via : Initial Calibration



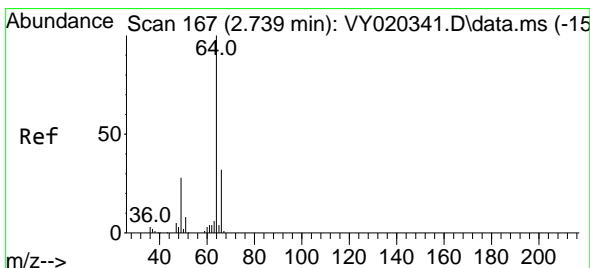
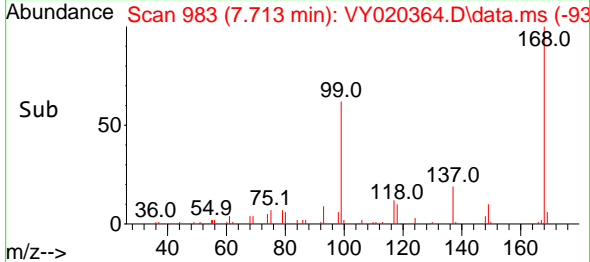
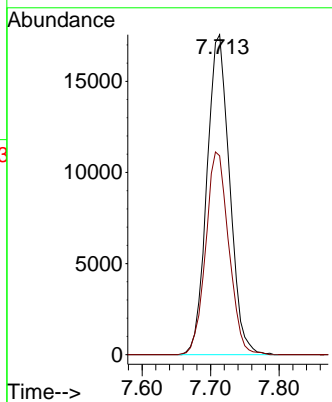


#1  
 Pentafluorobenzene  
 Concen: 50.000 ug/l  
 RT: 7.713 min Scan# 91  
 Delta R.T. 0.000 min  
 Lab File: VY020364.D  
 Acq: 20 Nov 2024 17:01

Instrument :  
 MSVOA\_Y  
 ClientSampleId :

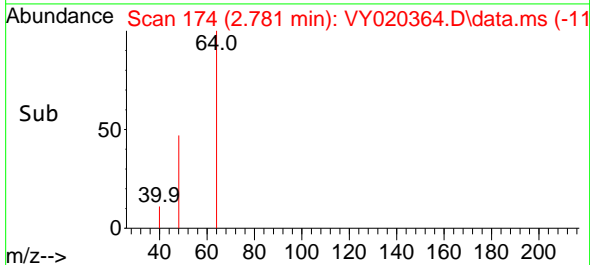
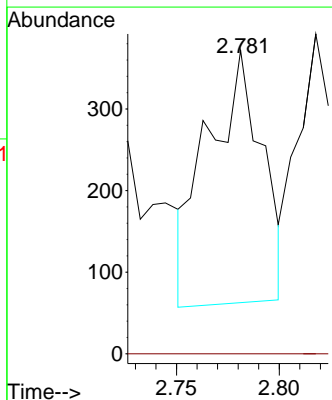
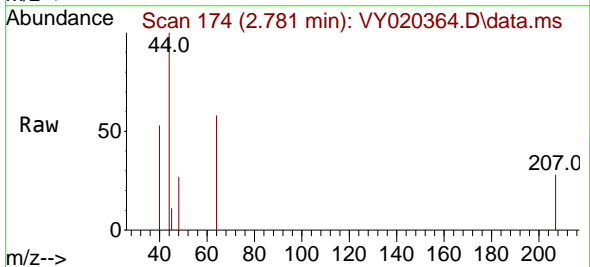


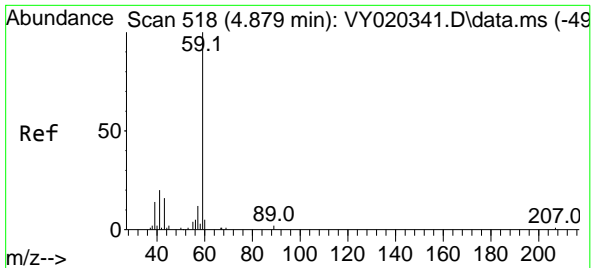
Tgt Ion:168 Resp: 40332  
 Ion Ratio Lower Upper  
 168 100  
 99 62.2 46.6 69.8



#6  
 Chloroethane  
 Concen: 1.813 ug/l  
 RT: 2.781 min Scan# 174  
 Delta R.T. 0.042 min  
 Lab File: VY020364.D  
 Acq: 20 Nov 2024 17:01

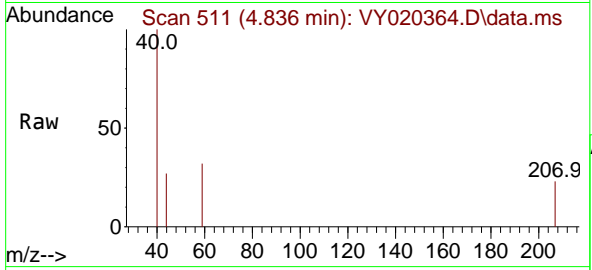
Tgt Ion: 64 Resp: 568  
 Ion Ratio Lower Upper  
 64 100  
 66 0.0 25.7 38.5#



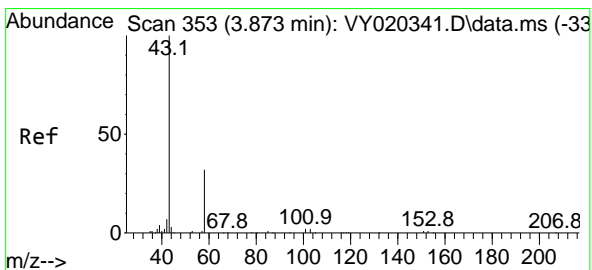
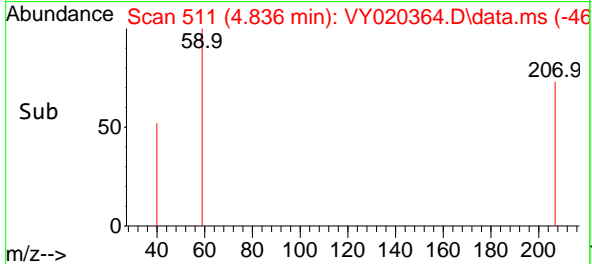
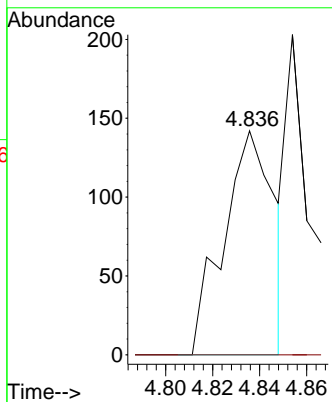


#11  
 Tert butyl alcohol  
 Concen: 5.122 ug/l  
 RT: 4.836 min Scan# 511  
 Delta R.T. -0.043 min  
 Lab File: VY020364.D  
 Acq: 20 Nov 2024 17:01

Instrument :  
 MSVOA\_Y  
 ClientSampleId :

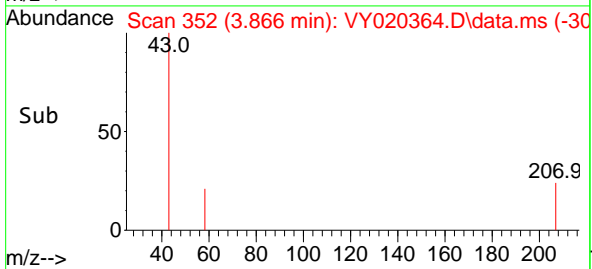
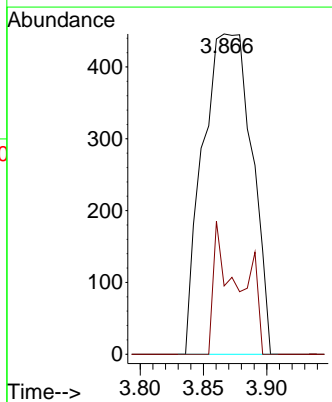
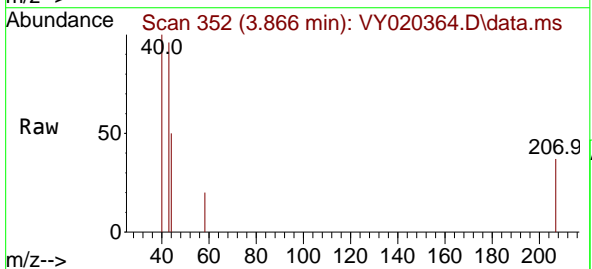


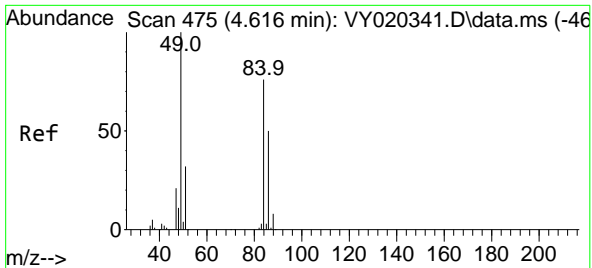
Tgt Ion: 59 Resp: 212  
 Ion Ratio Lower Upper  
 59 100  
 57 0.0 8.2 12.2#



#16  
 Acetone  
 Concen: 10.803 ug/l  
 RT: 3.866 min Scan# 352  
 Delta R.T. -0.006 min  
 Lab File: VY020364.D  
 Acq: 20 Nov 2024 17:01

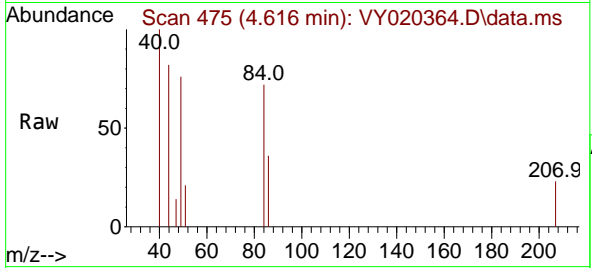
Tgt Ion: 43 Resp: 1200  
 Ion Ratio Lower Upper  
 43 100  
 58 21.3 25.7 38.5#



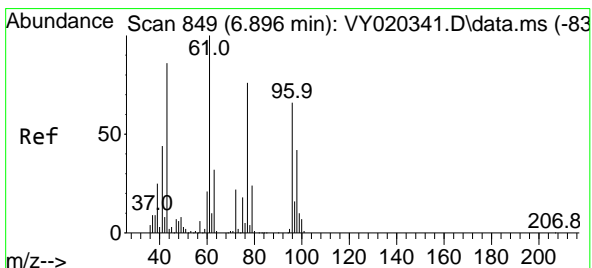
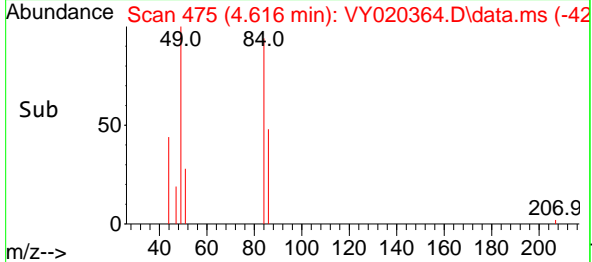
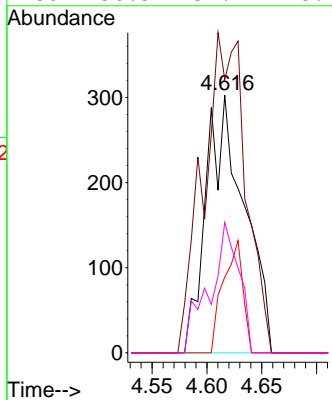


#20  
 Methylene Chloride  
 Concen: 1.560 ug/l  
 RT: 4.616 min Scan# 41  
 Delta R.T. -0.000 min  
 Lab File: VY020364.D  
 Acq: 20 Nov 2024 17:01

Instrument :  
 MSVOA\_Y  
 ClientSampleId :

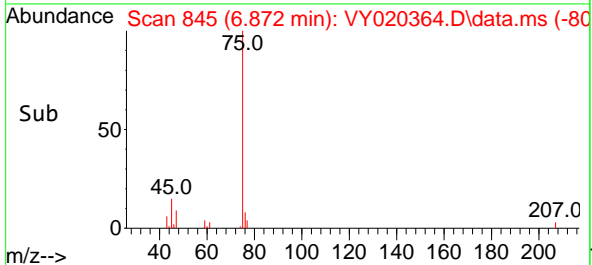
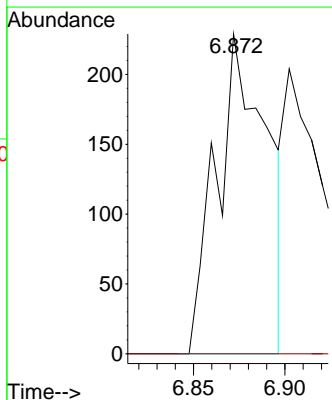
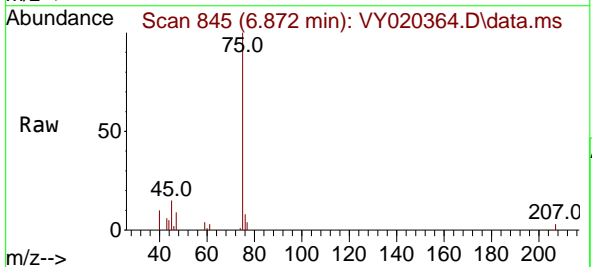


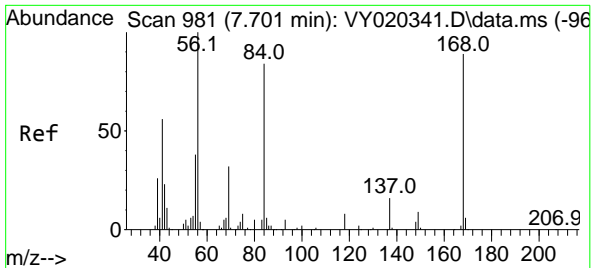
Tgt Ion	Resp	Lower	Upper
84	100		
49	105.9	104.7	157.1
51	29.4	33.4	50.0#
86	50.5	52.2	78.2#



#25  
 2-Butanone  
 Concen: 3.070 ug/l  
 RT: 6.872 min Scan# 845  
 Delta R.T. -0.025 min  
 Lab File: VY020364.D  
 Acq: 20 Nov 2024 17:01

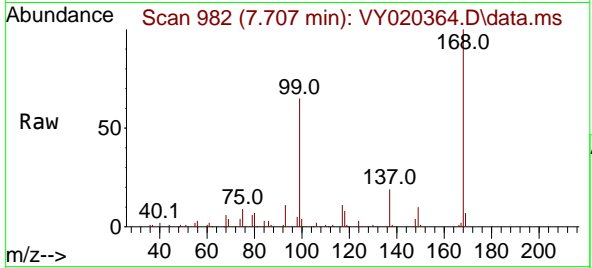
Tgt Ion	Resp	Lower	Upper
43	100		
72	0.0	20.4	30.6#



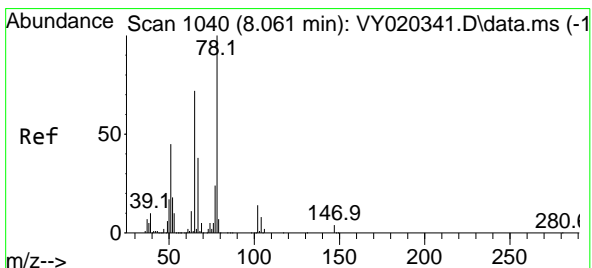
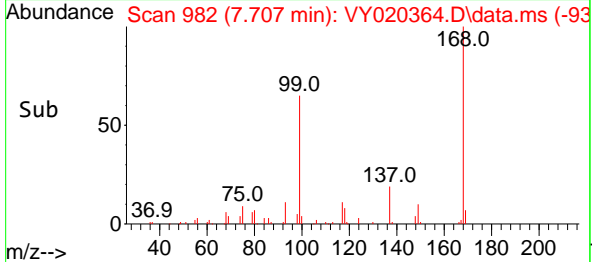
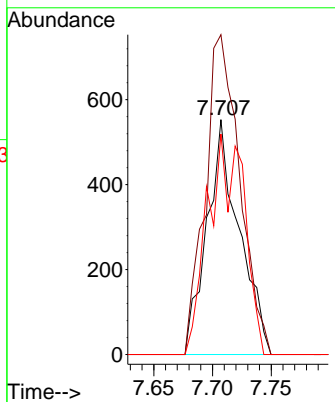


#31  
 Cyclohexane  
 Concen: 1.221 ug/l  
 RT: 7.707 min Scan# 91  
 Delta R.T. 0.006 min  
 Lab File: VY020364.D  
 Acq: 20 Nov 2024 17:01

Instrument :  
 MSVOA\_Y  
 ClientSampleId :

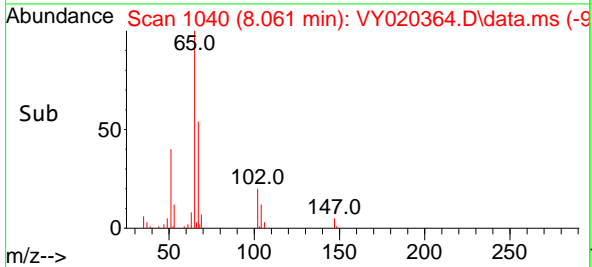
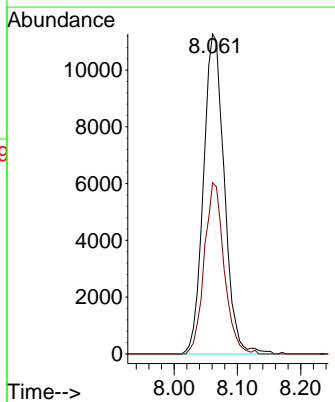
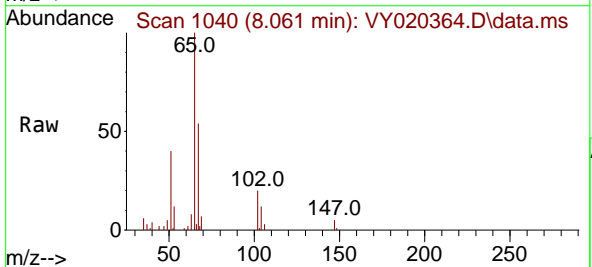


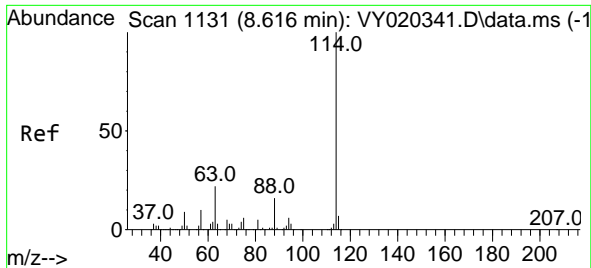
Tgt Ion: 56 Resp: 1055  
 Ion Ratio Lower Upper  
 56 100  
 69 136.2 25.3 37.9#  
 84 93.9 66.9 100.3



#33  
 1,2-Dichloroethane-d4  
 Concen: 55.809 ug/l  
 RT: 8.061 min Scan# 1040  
 Delta R.T. -0.000 min  
 Lab File: VY020364.D  
 Acq: 20 Nov 2024 17:01

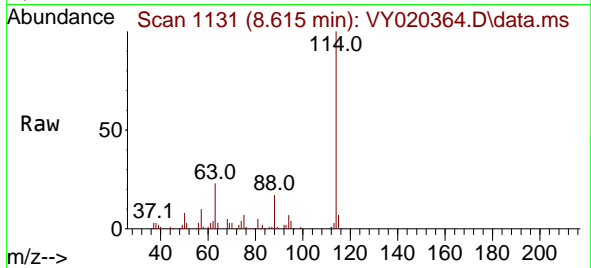
Tgt Ion: 65 Resp: 25860  
 Ion Ratio Lower Upper  
 65 100  
 67 51.1 0.0 105.8



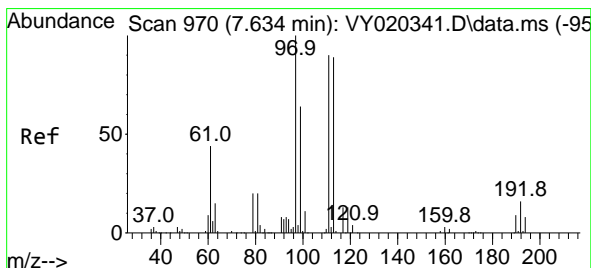
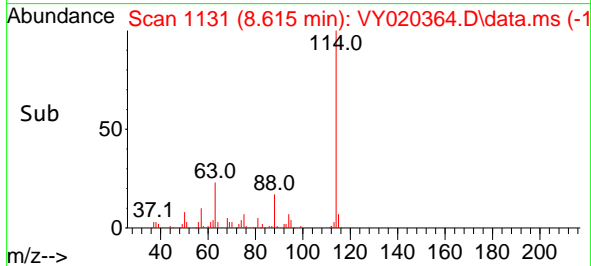
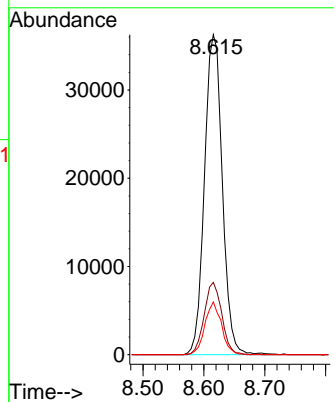


#34  
 1,4-Difluorobenzene  
 Concen: 50.000 ug/l  
 RT: 8.615 min Scan# 1131  
 Delta R.T. -0.000 min  
 Lab File: VY020364.D  
 Acq: 20 Nov 2024 17:01

Instrument : MSVOA\_Y  
 ClientSampleId :

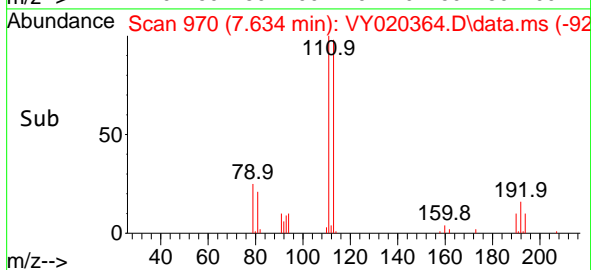
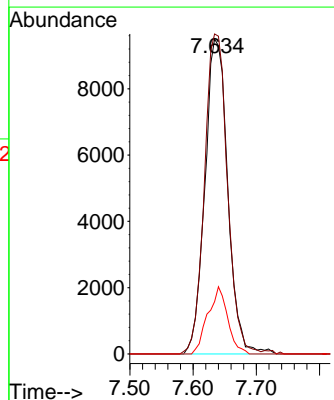
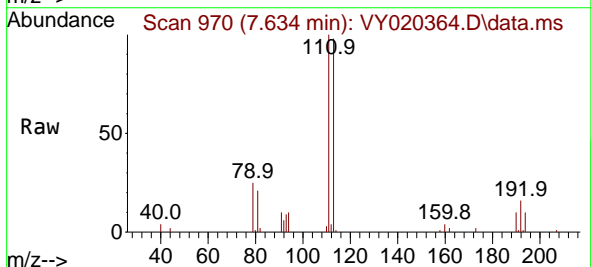


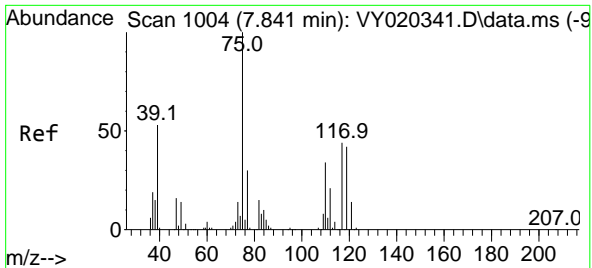
Tgt Ion:114 Resp: 73830  
 Ion Ratio Lower Upper  
 114 100  
 63 22.6 0.0 44.8  
 88 16.5 0.0 32.0



#35  
 Dibromofluoromethane  
 Concen: 50.492 ug/l  
 RT: 7.634 min Scan# 970  
 Delta R.T. -0.000 min  
 Lab File: VY020364.D  
 Acq: 20 Nov 2024 17:01

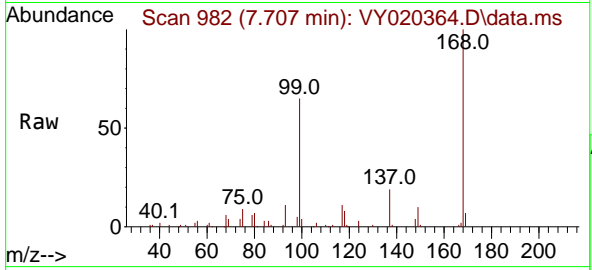
Tgt Ion:113 Resp: 23904  
 Ion Ratio Lower Upper  
 113 100  
 111 101.8 81.4 122.0  
 192 18.5 15.1 22.7





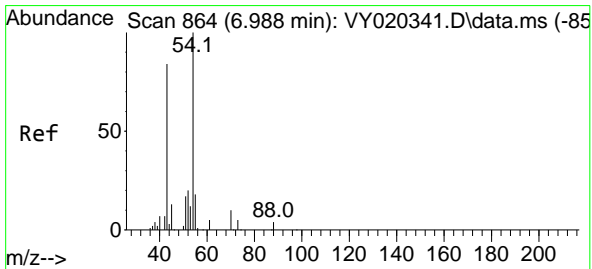
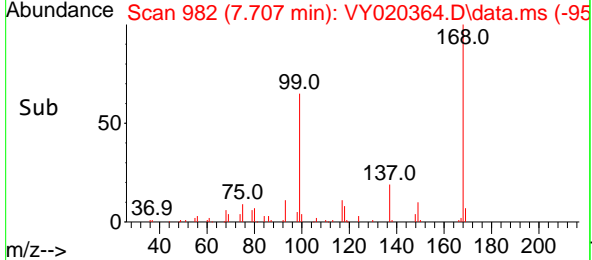
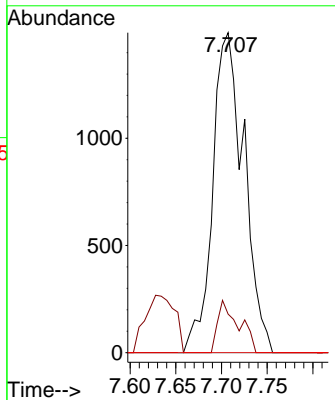
#36  
 1,1-Dichloropropene  
 Concen: 4.925 ug/l  
 RT: 7.707 min Scan# 911  
 Delta R.T. -0.134 min  
 Lab File: VY020364.D  
 Acq: 20 Nov 2024 17:01

Instrument : MSVOA\_Y  
 ClientSampleId :



Tgt Ion: 75 Resp: 3561

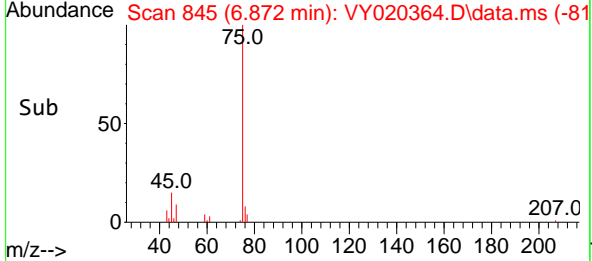
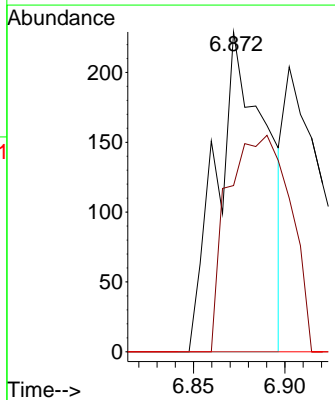
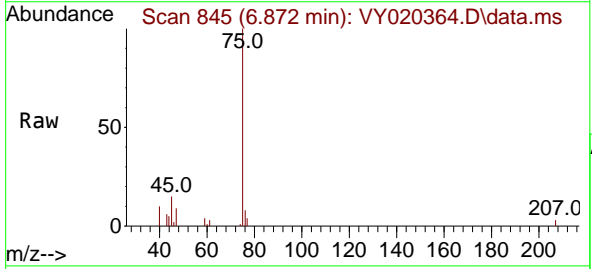
Ion	Ratio	Lower	Upper
75	100		
110	10.9	16.7	50.0#
77	0.0	24.6	36.8#



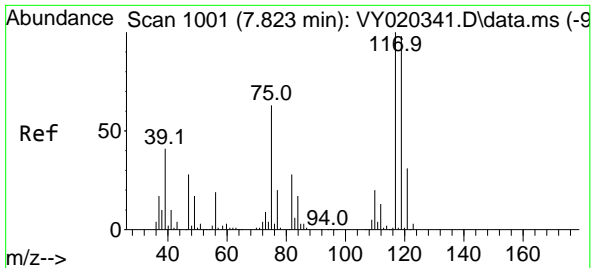
#37  
 Ethyl Acetate  
 Concen: 1.325 ug/l  
 RT: 6.872 min Scan# 845  
 Delta R.T. -0.116 min  
 Lab File: VY020364.D  
 Acq: 20 Nov 2024 17:01

Tgt Ion: 43 Resp: 439

Ion	Ratio	Lower	Upper
43	100		
61	84.1	10.7	16.1#
70	0.0	7.3	10.9#

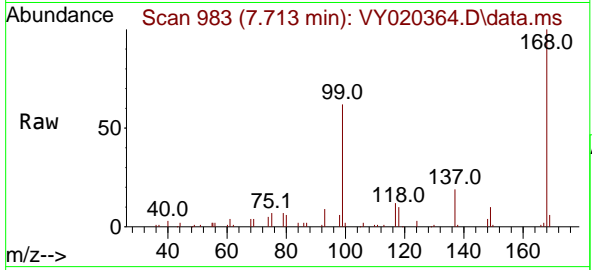




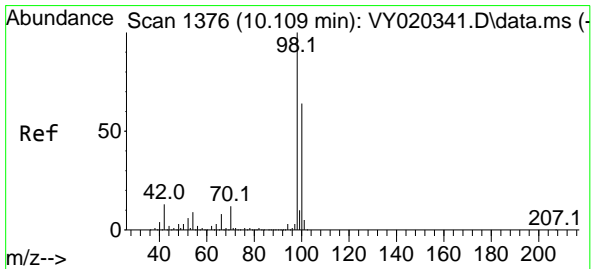
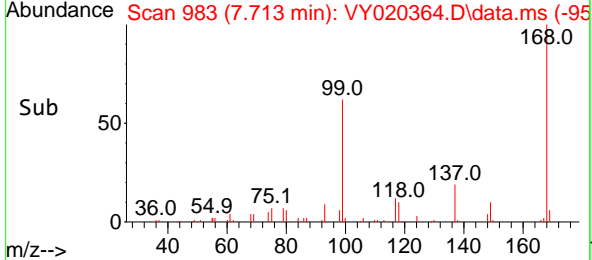
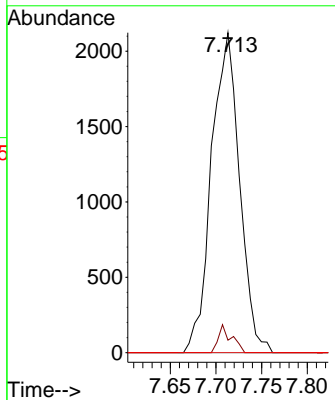


#38  
 Carbon Tetrachloride  
 Concen: 6.021 ug/l  
 RT: 7.713 min Scan# 91  
 Delta R.T. -0.110 min  
 Lab File: VY020364.D  
 Acq: 20 Nov 2024 17:01

Instrument :  
 MSVOA\_Y  
 ClientSampleId :

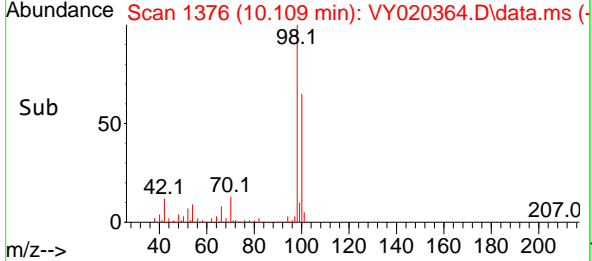
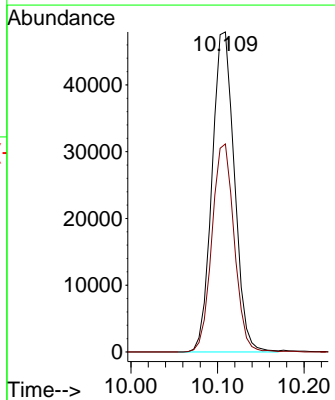
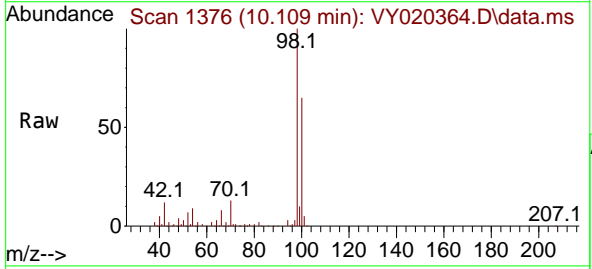


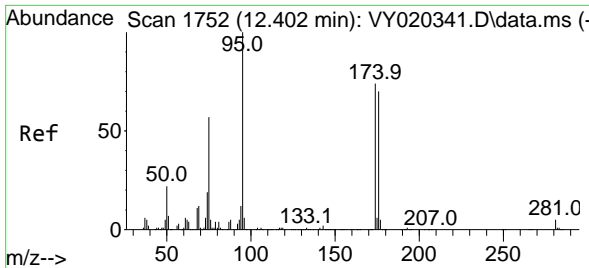
Tgt Ion:117 Resp: 4546  
 Ion Ratio Lower Upper  
 117 100  
 119 3.9 77.8 116.6#  
 121 0.0 24.6 37.0#



#50  
 Toluene-d8  
 Concen: 46.108 ug/l  
 RT: 10.109 min Scan# 1376  
 Delta R.T. -0.000 min  
 Lab File: VY020364.D  
 Acq: 20 Nov 2024 17:01

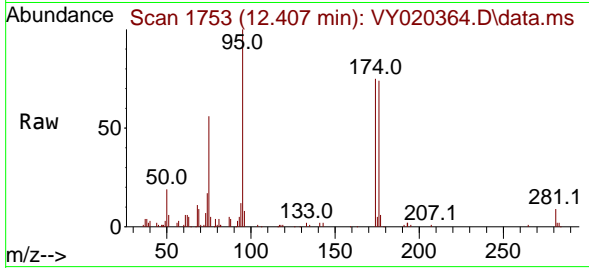
Tgt Ion: 98 Resp: 85986  
 Ion Ratio Lower Upper  
 98 100  
 100 64.6 51.3 76.9



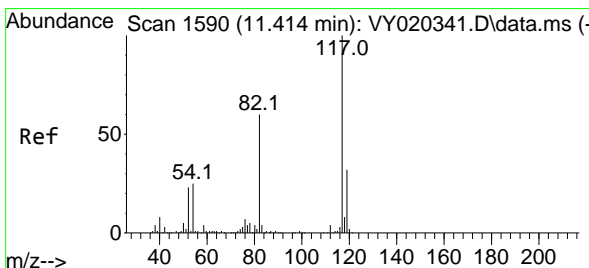
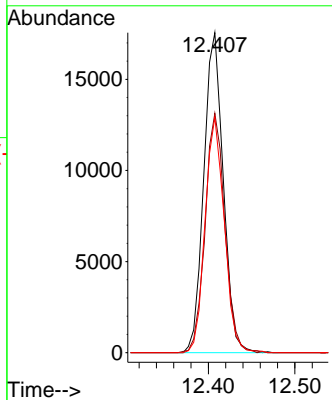
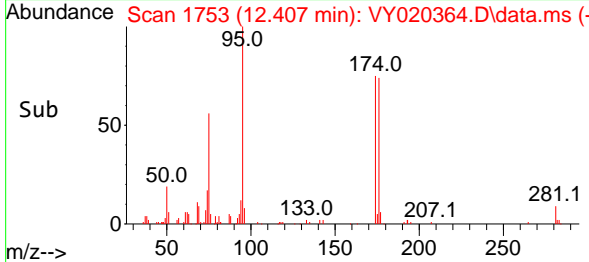


#62  
 4-Bromofluorobenzene  
 Concen: 45.756 ug/l  
 RT: 12.407 min Scan# 1753  
 Delta R.T. 0.006 min  
 Lab File: VY020364.D  
 Acq: 20 Nov 2024 17:01

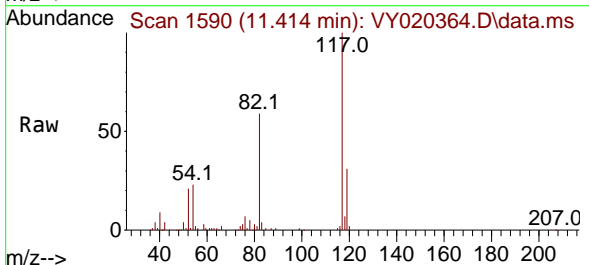
Instrument :  
 MSVOA\_Y  
 ClientSampleId :



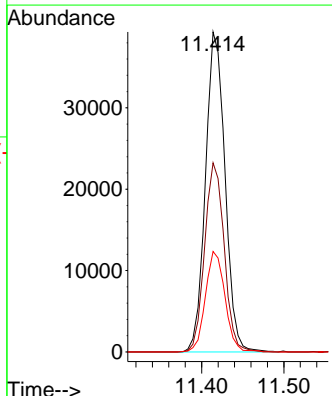
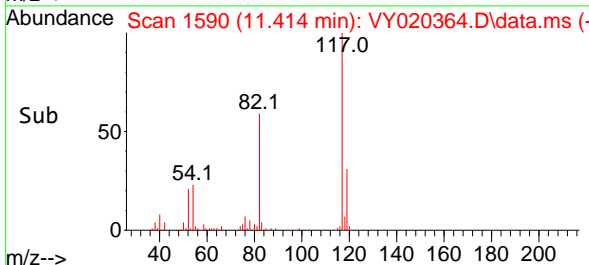
Tgt Ion: 95 Resp: 27431  
 Ion Ratio Lower Upper  
 95 100  
 174 75.7 0.0 156.8  
 176 72.6 0.0 152.0

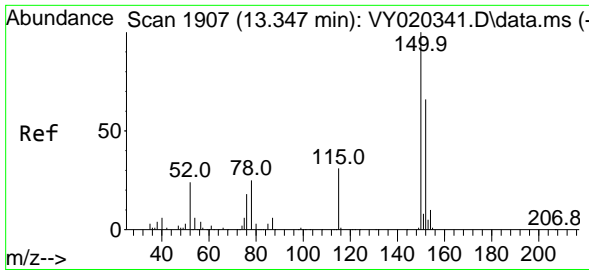


#63  
 Chlorobenzene-d5  
 Concen: 50.000 ug/l  
 RT: 11.414 min Scan# 1590  
 Delta R.T. -0.000 min  
 Lab File: VY020364.D  
 Acq: 20 Nov 2024 17:01



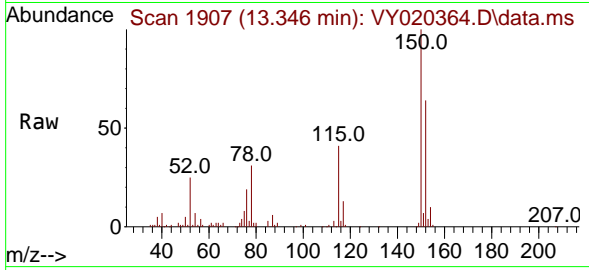
Tgt Ion: 117 Resp: 65009  
 Ion Ratio Lower Upper  
 117 100  
 82 59.1 48.2 72.4  
 119 31.4 25.8 38.8



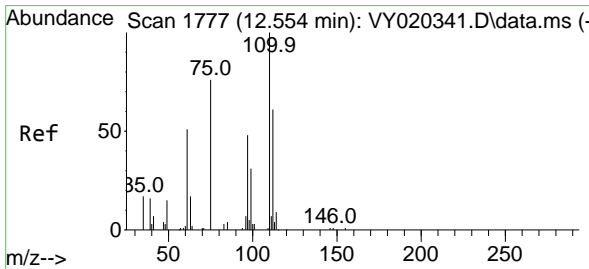
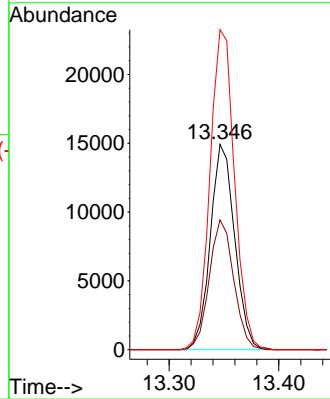
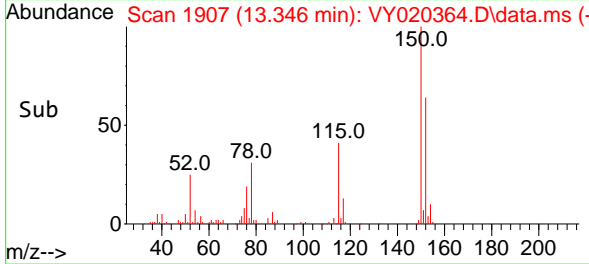


#72  
 1,4-Dichlorobenzene-d4  
 Concen: 50.000 ug/l  
 RT: 13.346 min Scan# 14  
 Delta R.T. -0.000 min  
 Lab File: VY020364.D  
 Acq: 20 Nov 2024 17:01

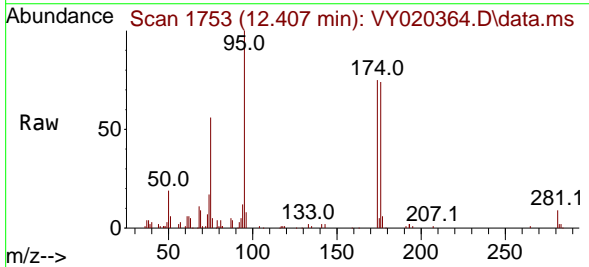
Instrument :  
 MSVOA\_Y  
 ClientSampleId :



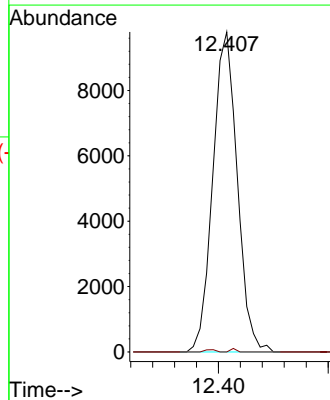
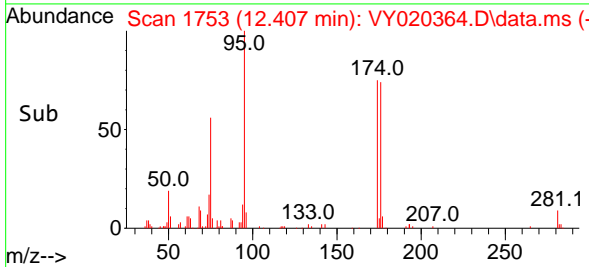
Tgt Ion:152 Resp: 23052  
 Ion Ratio Lower Upper  
 152 100  
 115 63.4 30.0 90.0  
 150 156.8 0.0 348.2

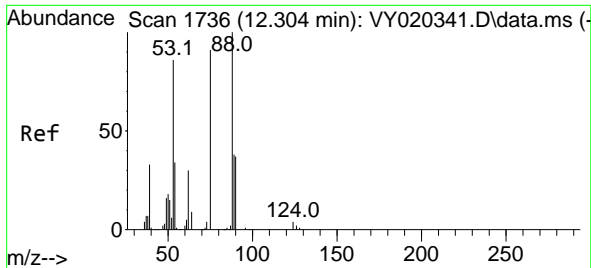


#76  
 1,2,3-Trichloropropane  
 Concen: 69.599 ug/l  
 RT: 12.407 min Scan# 1753  
 Delta R.T. -0.147 min  
 Lab File: VY020364.D  
 Acq: 20 Nov 2024 17:01



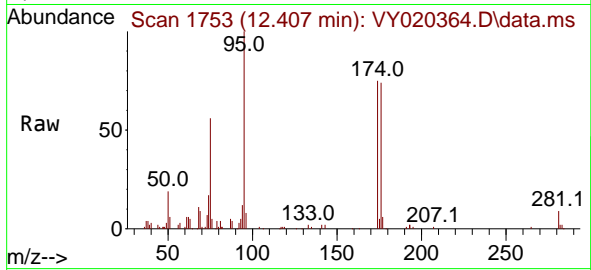
Tgt Ion: 75 Resp: 15122  
 Ion Ratio Lower Upper  
 75 100  
 77 0.3 0.0 0.0#





#81  
 trans-1,4-Dichloro-2-butene  
 Concen: 136.377 ug/l  
 RT: 12.407 min Scan# 1  
 Delta R.T. 0.103 min  
 Lab File: VY020364.D  
 Acq: 20 Nov 2024 17:01

Instrument :  
 MSVOA\_Y  
 ClientSampleId :



Tgt Ion: 75 Resp: 15122

Ion	Ratio	Lower	Upper
75	100		
53	0.0	81.1	121.7#
89	0.0	35.1	52.7#

