

Data Path : Z:\voasrv\HPCHEM1\MSVOA\_Y\Data\VY112624\  
 Data File : VY020448.D  
 Acq On : 26 Nov 2024 13:57  
 Operator : SY/MD  
 Sample : P4985-03  
 Misc : 4.56g/5.0mL/MSVOA\_Y/SOIL/A  
 ALS Vial : 6 Sample Multiplier: 1

Instrument :  
 MSVOA\_Y  
 ClientSampleId :  
 MH-756-VOC

Integration Parameters: RTEINT.P

Integrator: RTE  
 Smoothing : ON  
 Sampling : 1  
 Start Thrs: 0.2  
 Stop Thrs : 0  
 Filtering: 5  
 Min Area: 3 % of largest Peak  
 Max Peaks: 100  
 Peak Location: TOP

If leading or trailing edge < 100 prefer < Baseline drop else tangent >  
 Peak separation: 5

Method : Z:\voasrv\HPCHEM1\MSVOA\_Y\methods\82Y111924S.M  
 Title : SW846 8260

Signal : TIC: VY020448.D\data.ms

peak #	R.T. min	first scan	max scan	last scan	PK TY	peak height	corr. area	corr. % max.	% of total
1	6.890	840	848	859	rVB2	4436	12694	1.58%	0.240%
2	7.634	960	970	976	rBV	107210	258595	32.15%	4.887%
3	7.707	976	982	996	rVB	168775	391308	48.66%	7.396%
4	8.067	1031	1041	1052	rBV	92467	207484	25.80%	3.921%
5	8.616	1123	1131	1149	rVB	300162	584852	72.72%	11.054%
6	10.103	1367	1375	1387	rBV	450023	804240	100.00%	15.200%
7	11.414	1583	1590	1599	rBV	445741	731500	90.96%	13.825%
8	11.633	1615	1626	1634	rBV3	9762	25318	3.15%	0.479%
9	11.957	1675	1679	1683	rVB2	5031	8265	1.03%	0.156%
10	12.408	1744	1753	1763	rVB	337489	534030	66.40%	10.093%
11	12.591	1776	1783	1788	rVB2	4615	9236	1.15%	0.175%
12	12.658	1788	1794	1798	rBV	16356	26820	3.33%	0.507%
13	12.731	1802	1806	1812	rVB3	21208	33740	4.20%	0.638%
14	12.895	1825	1833	1840	rBV2	8768	17221	2.14%	0.325%
15	12.962	1840	1844	1851	rVB6	5184	8730	1.09%	0.165%
16	13.042	1851	1857	1863	rBV	31080	47202	5.87%	0.892%
17	13.170	1872	1878	1883	rBV4	4889	8961	1.11%	0.169%
18	13.237	1883	1889	1893	rBV4	8841	14978	1.86%	0.283%
19	13.347	1901	1907	1917	rVV	399712	611992	76.10%	11.567%
20	13.548	1931	1940	1943	rBV3	21684	37638	4.68%	0.711%
21	13.590	1943	1947	1955	rVB3	22885	46304	5.76%	0.875%
22	13.676	1955	1961	1965	rBV4	18025	28048	3.49%	0.530%
23	13.749	1968	1973	1977	rVV2	9701	14960	1.86%	0.283%
24	13.810	1978	1983	1985	rVV	14762	21358	2.66%	0.404%
25	13.840	1985	1988	1992	rVV	16778	23305	2.90%	0.440%
26	13.895	1992	1997	2002	rVB2	29533	45756	5.69%	0.865%
27	14.005	2009	2015	2020	rVB	21593	34995	4.35%	0.661%
28	14.133	2030	2036	2040	rVV3	9575	18327	2.28%	0.346%
29	14.176	2040	2043	2046	rVV4	7623	13312	1.66%	0.252%
30	14.218	2046	2050	2053	rVV	20877	32576	4.05%	0.616%
31	14.255	2053	2056	2060	rVV	33774	45614	5.67%	0.862%
32	14.304	2060	2064	2067	rVV2	14431	19434	2.42%	0.367%
33	14.340	2067	2070	2076	rVB3	10956	13464	1.67%	0.254%
34	14.444	2083	2087	2090	rVB2	9646	12455	1.55%	0.235%
35	14.487	2090	2094	2098	rBV2	19390	33688	4.19%	0.637%
36	14.535	2098	2102	2106	rVB	21694	32545	4.05%	0.615%

Data Path : Z:\voasrv\HPCHEM1\MSVOA\_Y\Data\VY112624\  
 Data File : VY020448.D  
 Acq On : 26 Nov 2024 13:57  
 Operator : SY/MD  
 Sample : P4985-03  
 Misc : 4.56g/5.0mL/MSVOA\_Y/SOIL/A  
 ALS Vial : 6 Sample Multiplier: 1

Instrument :  
 MSVOA\_Y  
 ClientSampleId :  
 MH-756-VOC

Integration Parameters: RTEINT.P

Integrator: RTE  
 Smoothing : ON  
 Sampling : 1  
 Start Thrs: 0.2  
 Stop Thrs : 0

Filtering: 5  
 Min Area: 3 % of largest Peak  
 Max Peaks: 100  
 Peak Location: TOP

If leading or trailing edge < 100 prefer < Baseline drop else tangent >  
 Peak separation: 5

Method : Z:\voasrv\HPCHEM1\MSVOA\_Y\methods\82Y111924S.M  
 Title : SW846 8260

37	14.602	2106	2113	2119	rBV5	41110	95782	11.91%	1.810%
38	14.657	2119	2122	2128	rVB	12124	19323	2.40%	0.365%
39	14.755	2132	2138	2146	rBV3	18392	29508	3.67%	0.558%
40	14.865	2146	2156	2159	rBV3	20616	41332	5.14%	0.781%
41	14.895	2159	2161	2168	rVB4	9617	12487	1.55%	0.236%
42	14.968	2168	2173	2181	rVB3	16166	32747	4.07%	0.619%
43	15.151	2193	2203	2207	rBV4	9176	24585	3.06%	0.465%
44	15.206	2207	2212	2216	rBV3	10622	19087	2.37%	0.361%
45	15.261	2216	2221	2225	rBV6	6855	14380	1.79%	0.272%
46	15.340	2232	2234	2240	rVB6	8795	12939	1.61%	0.245%
47	15.432	2244	2249	2257	rBV4	10947	20870	2.59%	0.394%
48	15.596	2270	2276	2278	rBV5	6899	12822	1.59%	0.242%
49	15.633	2278	2282	2290	rVB2	23025	40126	4.99%	0.758%
50	15.718	2290	2296	2302	rBV7	4220	8688	1.08%	0.164%
51	15.785	2302	2307	2320	rVB8	6279	18799	2.34%	0.355%
52	15.931	2323	2331	2336	rBV2	13129	27300	3.39%	0.516%
53	16.120	2354	2362	2368	rBV3	12172	27269	3.39%	0.515%
54	16.181	2368	2372	2378	rBV5	5116	11038	1.37%	0.209%
55	16.377	2398	2404	2410	rBV7	4297	10983	1.37%	0.208%

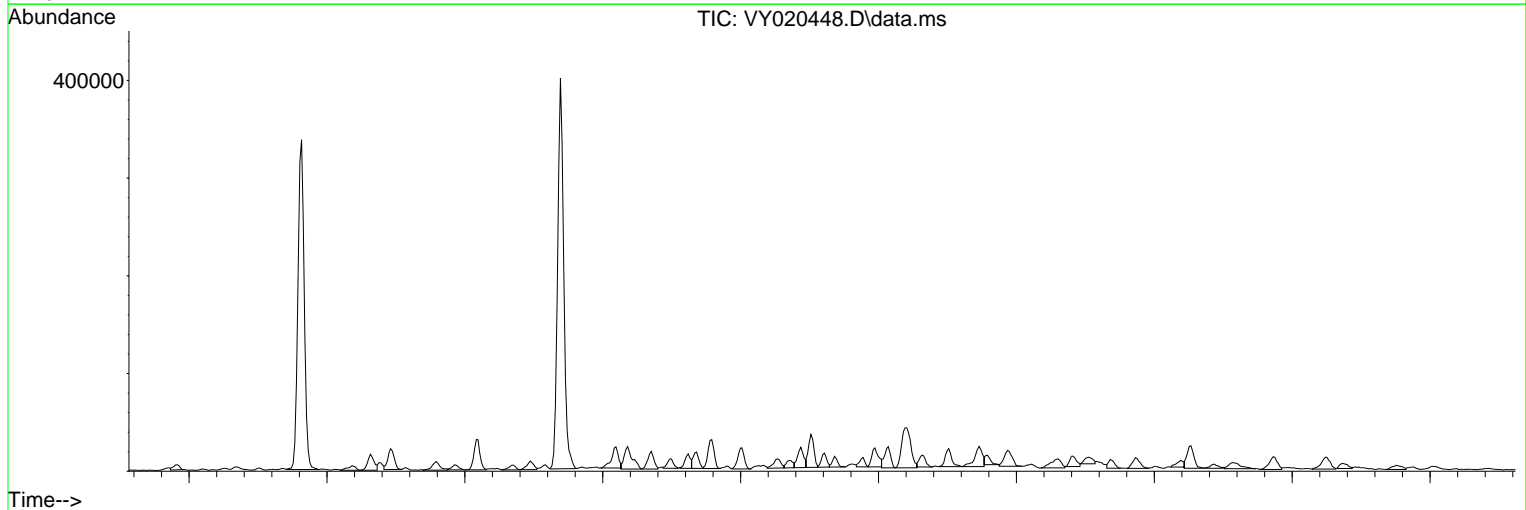
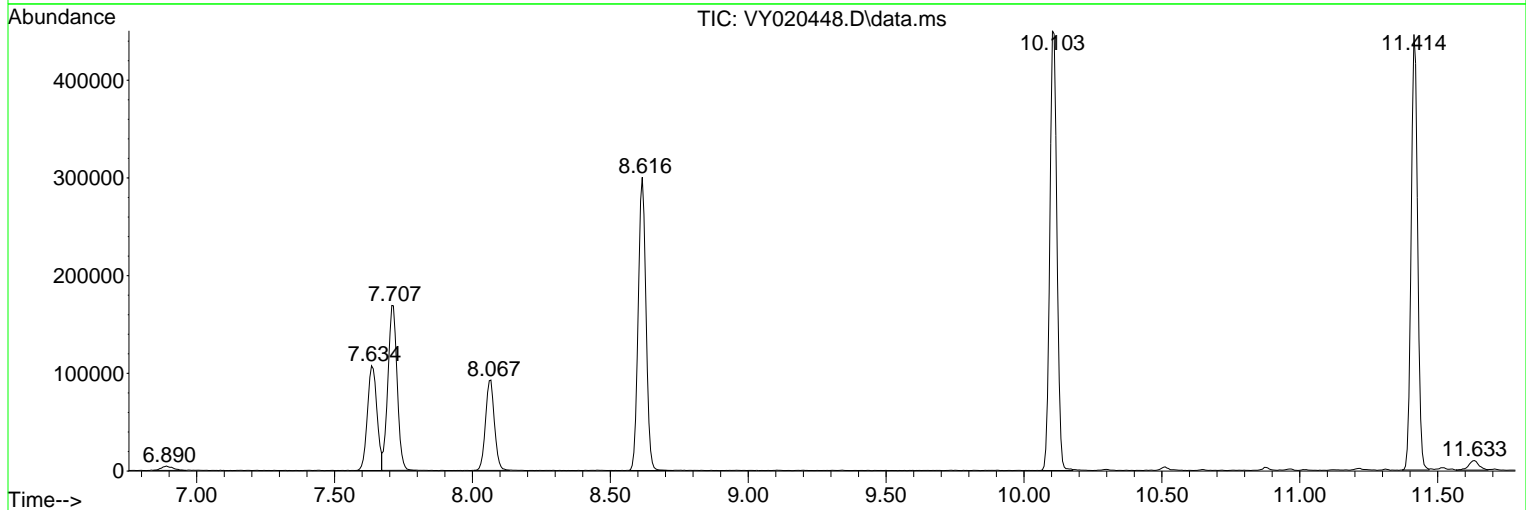
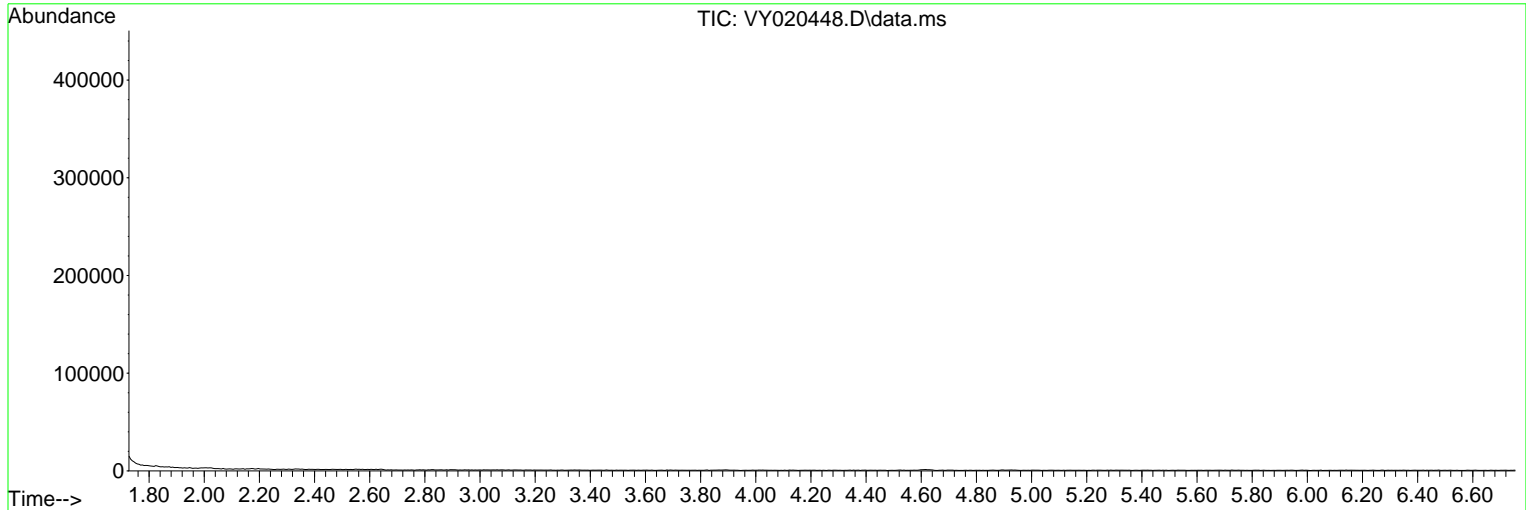
Sum of corrected areas: 5291010

Data Path : Z:\voasrv\HPCHEM1\MSVOA\_Y\Data\VY112624\  
Data File : VY020448.D  
Acq On : 26 Nov 2024 13:57  
Operator : SY/MD  
Sample : P4985-03  
Misc : 4.56g/5.0mL/MSVOA\_Y/SOIL/A  
ALS Vial : 6 Sample Multiplier: 1

Instrument :  
MSVOA\_Y  
ClientSampleId :  
MH-756-VOC

Quant Method : Z:\voasrv\HPCHEM1\MSVOA\_Y\methods\82Y111924S.M  
Quant Title : SW846 8260

TIC Library : C:\Database\NIST20.L  
TIC Integration Parameters: LSCINT.P



Data Path : Z:\voasrv\HPCHEM1\MSVOA\_Y\Data\VY112624\  
 Data File : VY020448.D  
 Acq On : 26 Nov 2024 13:57  
 Operator : SY/MD  
 Sample : P4985-03  
 Misc : 4.56g/5.0mL/MSVOA\_Y/SOIL/A  
 ALS Vial : 6 Sample Multiplier: 1

Instrument :  
 MSVOA\_Y  
 ClientSampleId :  
 MH-756-VOC

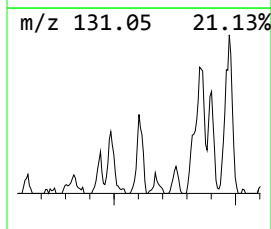
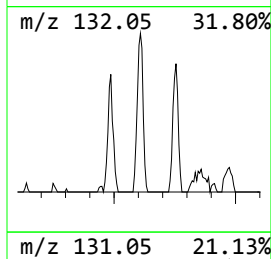
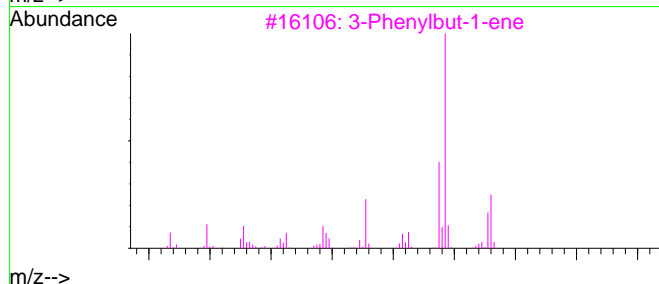
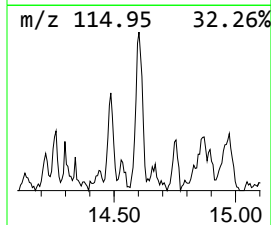
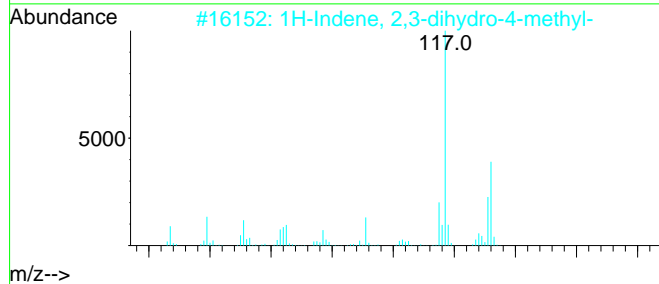
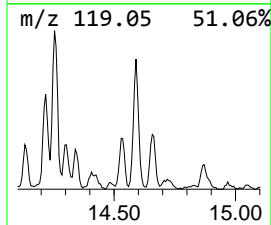
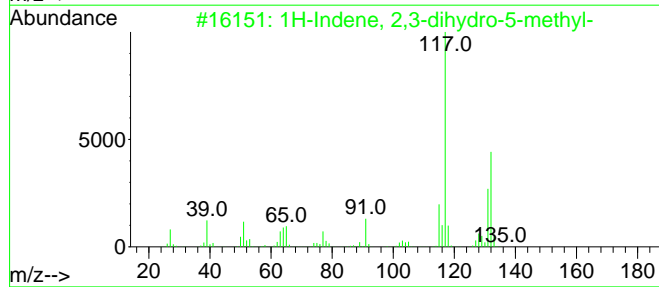
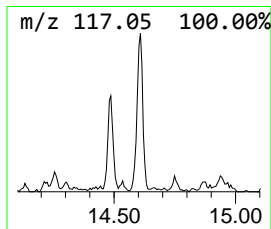
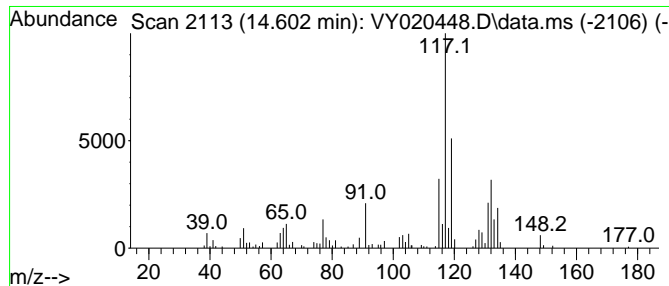
Quant Method : Z:\voasrv\HPCHEM1\MSVOA\_Y\methods\82Y111924S.M  
 Quant Title : SW846 8260

TIC Library : C:\Database\NIST20.L  
 TIC Integration Parameters: LSCINT.P

\*\*\*\*\*  
 Peak Number 1 1H-Indene, 2,3-dihydro-5-me... Concentration Rank 1

R.T.	EstConc	Area	Relative to ISTD	R.T.
14.602	7.83 ug/l	95782	1,4-Dichlorobenzene-d4	13.347

Hit#	of 5	Tentative ID	MW	MolForm	CAS#	Qual
1		1H-Indene, 2,3-dihydro-5-methyl-	132	C10H12	000874-35-1	86
2		1H-Indene, 2,3-dihydro-4-methyl-	132	C10H12	000824-22-6	70
3		3-Phenylbut-1-ene	132	C10H12	000934-10-1	70
4		Benzene, 1-ethenyl-3-ethyl-	132	C10H12	007525-62-4	64
5		Benzene, 1-ethenyl-4-ethyl-	132	C10H12	003454-07-7	60



Data Path : Z:\voasrv\HPCHEM1\MSVOA\_Y\Data\VY112624\  
Data File : VY020448.D  
Acq On : 26 Nov 2024 13:57  
Operator : SY/MD  
Sample : P4985-03  
Misc : 4.56g/5.0mL/MSVOA\_Y/SOIL/A  
ALS Vial : 6 Sample Multiplier: 1

Instrument :  
MSVOA\_Y  
ClientSampleId :  
MH-756-VOC

Quant Method : Z:\voasrv\HPCHEM1\MSVOA\_Y\methods\82Y111924S.M  
Quant Title : SW846 8260

TIC Library : C:\Database\NIST20.L  
TIC Integration Parameters: LSCINT.P

TIC Top Hit name	RT	EstConc	Units	Response	--Internal Standard--			
					#	RT	Resp	Conc
1H-Indene, 2,3-...	14.602	7.8	ug/l	95782	4	13.347	611992	50.0