

Data Path : Z:\voasrv\HPCHEM1\MSVOA_Y\Data\VY112724\
 Data File : VY020460.D
 Acq On : 27 Nov 2024 13:20
 Operator : SY/MD
 Sample : P5005-01
 Misc : 5.07g/5.0mL/MSVOA_Y/SOIL/B
 ALS Vial : 9 Sample Multiplier: 1

Instrument :
 MSVOA_Y
 ClientSampleId :

Quant Time: Nov 28 00:59:55 2024
 Quant Method : Z:\voasrv\HPCHEM1\MSVOA_Y\methods\82Y111924S.M
 Quant Title : SW846 8260
 QLast Update : Wed Nov 20 04:38:24 2024
 Response via : Initial Calibration

Compound	R.T.	QIon	Response	Conc	Units	Dev(Min)

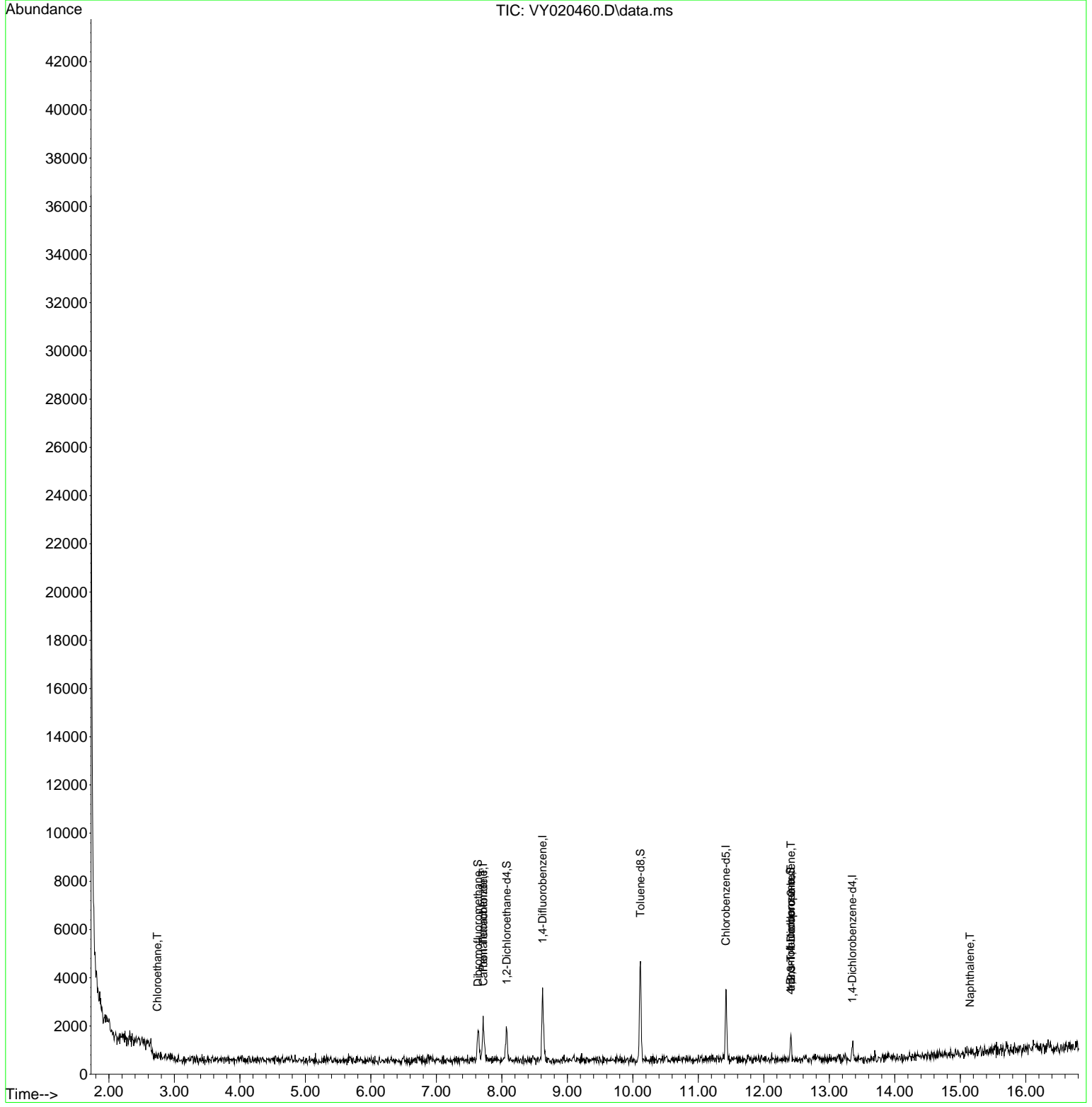
Internal Standards						
1) Pentafluorobenzene	7.713	168	1696	50.000	ug/l	0.00
34) 1,4-Difluorobenzene	8.622	114	2829	50.000	ug/l	0.00
63) Chlorobenzene-d5	11.420	117	1817	50.000	ug/l	# 0.00
72) 1,4-Dichlorobenzene-d4	13.352	152	321	50.000	ug/l	# 0.00
System Monitoring Compounds						
33) 1,2-Dichloroethane-d4	8.073	65	1165	59.789	ug/l	0.01
Spiked Amount	50.000	Range 50 - 163	Recovery	=	119.580%	
35) Dibromofluoromethane	7.634	113	957	52.755	ug/l	0.00
Spiked Amount	50.000	Range 54 - 147	Recovery	=	105.520%	
50) Toluene-d8	10.115	98	2856	39.967	ug/l	0.00
Spiked Amount	50.000	Range 58 - 134	Recovery	=	79.940%	
62) 4-Bromofluorobenzene	12.408	95	323	14.061	ug/l	0.00
Spiked Amount	50.000	Range 29 - 146	Recovery	=	28.120%#	
Target Compounds						
						Qvalue
6) Chloroethane	2.739	64	106	8.046	ug/l #	43
38) Carbon Tetrachloride	7.719	117	90	3.111	ug/l #	11
76) 1,2,3-Trichloropropane	12.414	75	187	61.808	ug/l #	100
81) trans-1,4-Dichloro-2-b...	12.414	75	187	121.109	ug/l #	9
95) Naphthalene	15.151	128	45	4.503	ug/l #	69

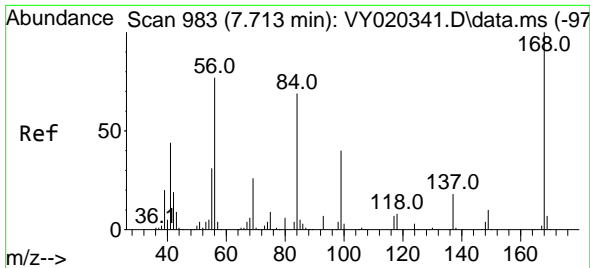
(#) = qualifier out of range (m) = manual integration (+) = signals summed

Data Path : Z:\voasrv\HPCHEM1\MSVOA_Y\Data\VY112724\
Data File : VY020460.D
Acq On : 27 Nov 2024 13:20
Operator : SY/MD
Sample : P5005-01
Misc : 5.07g/5.0mL/MSVOA_Y/SOIL/B
ALS Vial : 9 Sample Multiplier: 1

Instrument :
MSVOA_Y
ClientSampleId :

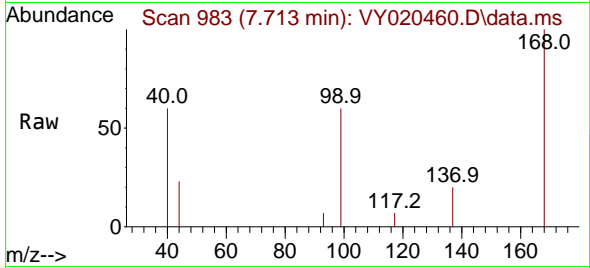
Quant Time: Nov 28 00:59:55 2024
Quant Method : Z:\voasrv\HPCHEM1\MSVOA_Y\methods\82Y111924S.M
Quant Title : SW846 8260
QLast Update : Wed Nov 20 04:38:24 2024
Response via : Initial Calibration



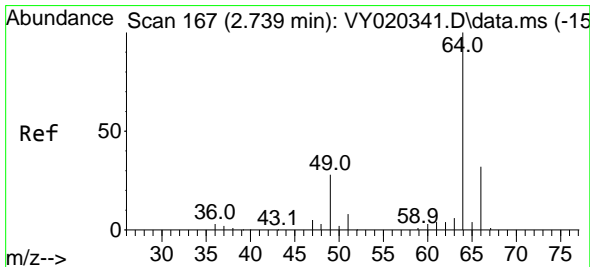
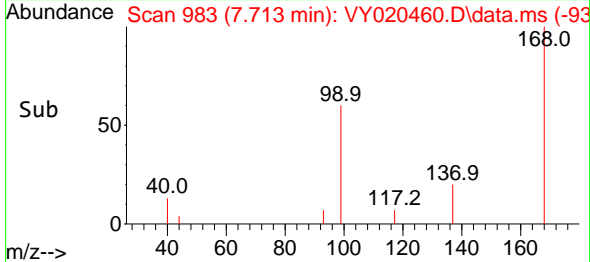
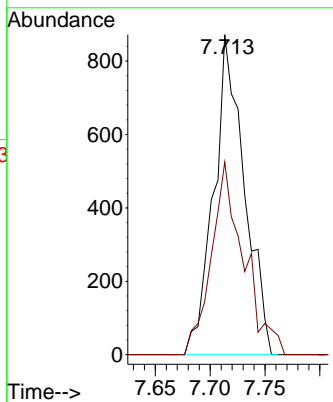


#1
 Pentafluorobenzene
 Concen: 50.000 ug/l
 RT: 7.713 min Scan# 91
 Delta R.T. 0.000 min
 Lab File: VY020460.D
 Acq: 27 Nov 2024 13:20

Instrument :
 MSVOA_Y
 ClientSampleId :

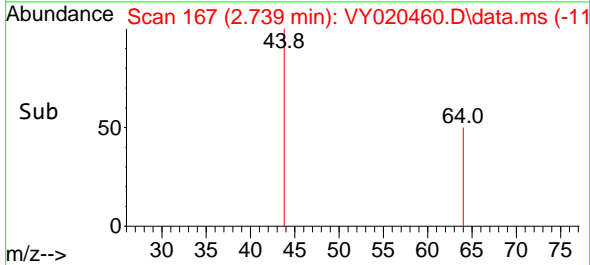
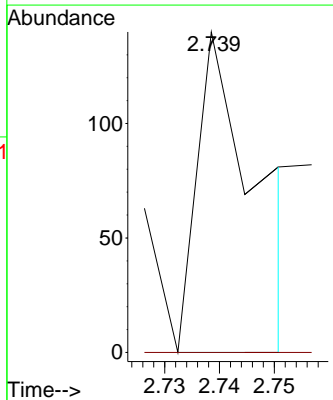
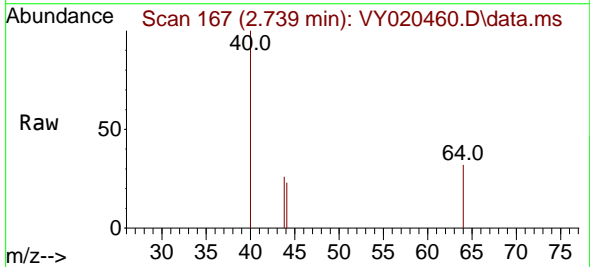


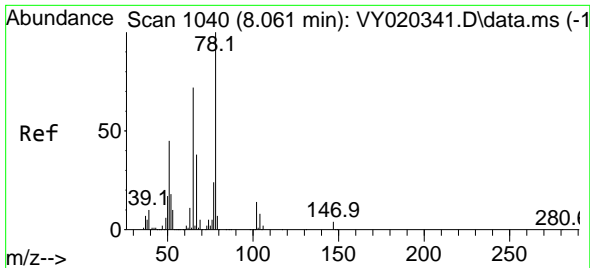
Tgt Ion:168 Resp: 1696
 Ion Ratio Lower Upper
 168 100
 99 60.2 46.6 69.8



#6
 Chloroethane
 Concen: 8.046 ug/l
 RT: 2.739 min Scan# 167
 Delta R.T. -0.000 min
 Lab File: VY020460.D
 Acq: 27 Nov 2024 13:20

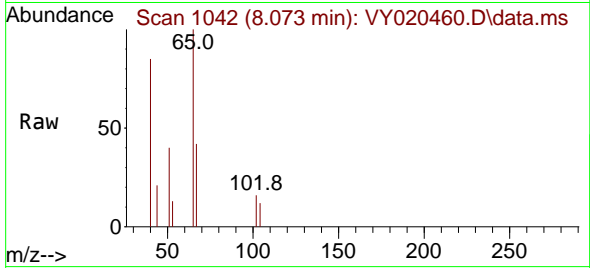
Tgt Ion: 64 Resp: 106
 Ion Ratio Lower Upper
 64 100
 66 0.0 25.7 38.5#



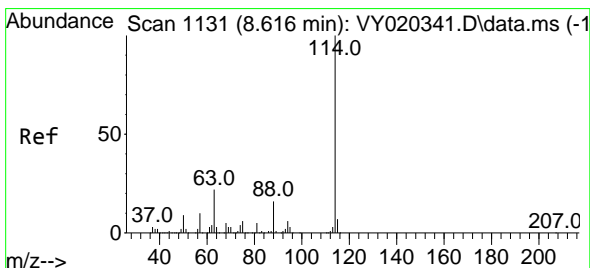
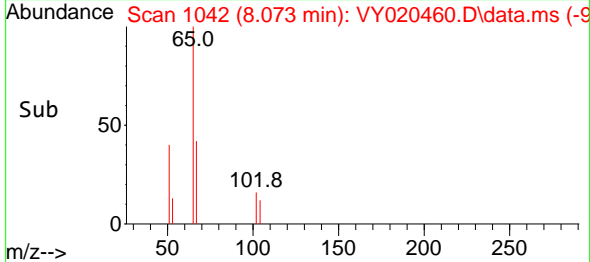
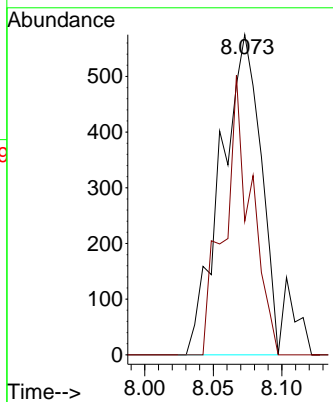


#33
 1,2-Dichloroethane-d4
 Concen: 59.789 ug/l
 RT: 8.073 min Scan# 1042
 Delta R.T. 0.012 min
 Lab File: VY020460.D
 Acq: 27 Nov 2024 13:20

Instrument : MSVOA_Y
 ClientSampleId :

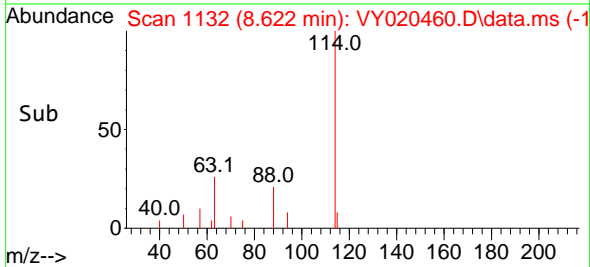
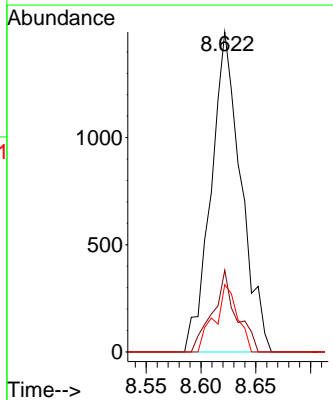
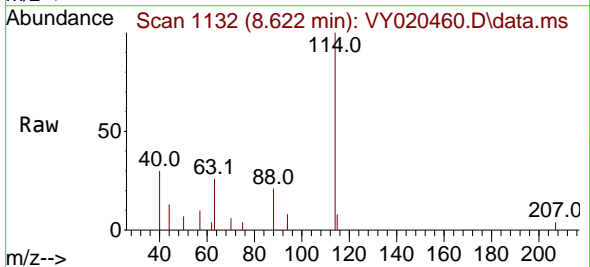


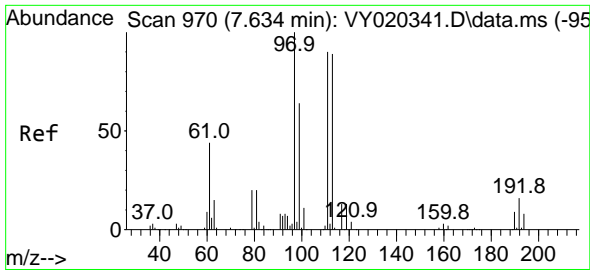
Tgt Ion: 65 Resp: 1165
 Ion Ratio Lower Upper
 65 100
 67 59.7 0.0 105.8



#34
 1,4-Difluorobenzene
 Concen: 50.000 ug/l
 RT: 8.622 min Scan# 1132
 Delta R.T. 0.006 min
 Lab File: VY020460.D
 Acq: 27 Nov 2024 13:20

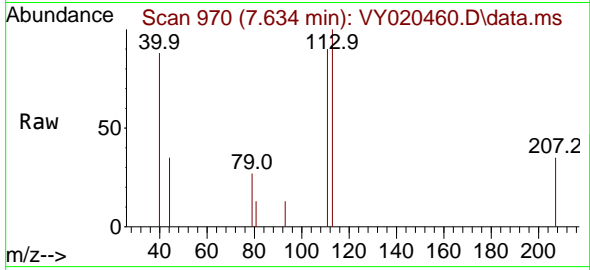
Tgt Ion: 114 Resp: 2829
 Ion Ratio Lower Upper
 114 100
 63 25.5 0.0 44.8
 88 21.0 0.0 32.0



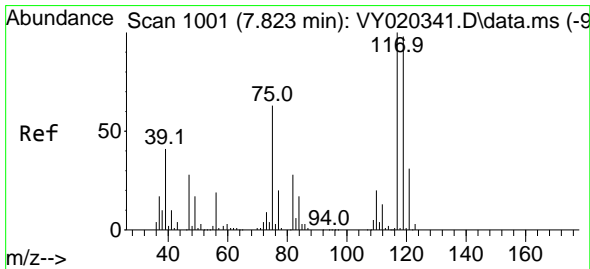
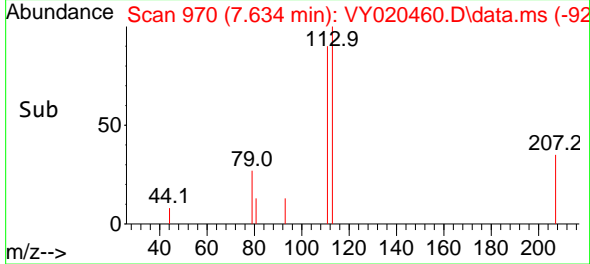
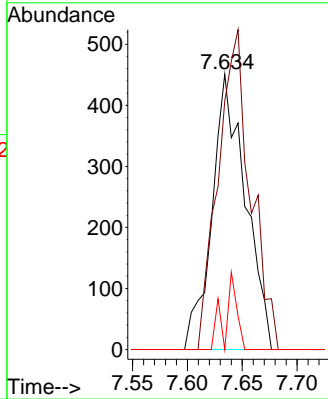


#35
 Dibromofluoromethane
 Concen: 52.755 ug/l
 RT: 7.634 min Scan# 91
 Delta R.T. -0.000 min
 Lab File: VY020460.D
 Acq: 27 Nov 2024 13:20

Instrument :
 MSVOA_Y
 ClientSampleId :

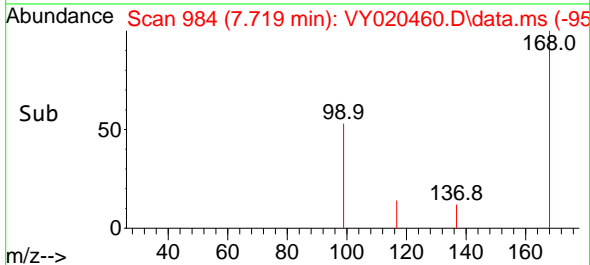
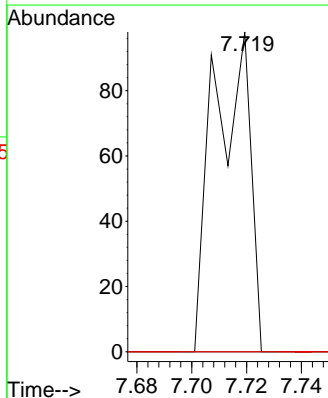
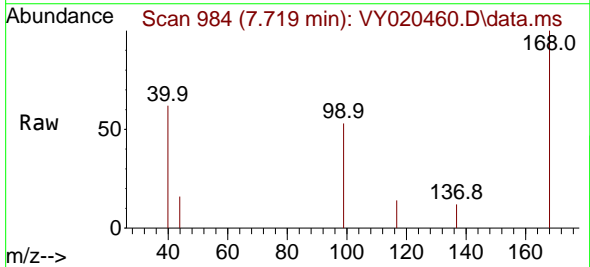


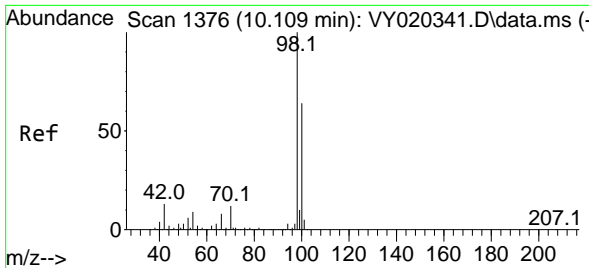
Tgt Ion:113 Resp: 957
 Ion Ratio Lower Upper
 113 100
 111 112.4 81.4 122.0
 192 10.1 15.1 22.7#



#38
 Carbon Tetrachloride
 Concen: 3.111 ug/l
 RT: 7.719 min Scan# 984
 Delta R.T. -0.104 min
 Lab File: VY020460.D
 Acq: 27 Nov 2024 13:20

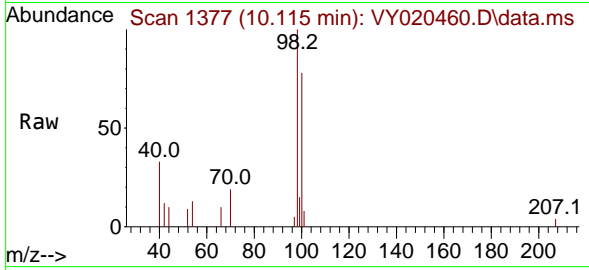
Tgt Ion:117 Resp: 90
 Ion Ratio Lower Upper
 117 100
 119 0.0 77.8 116.6#
 121 0.0 24.6 37.0#



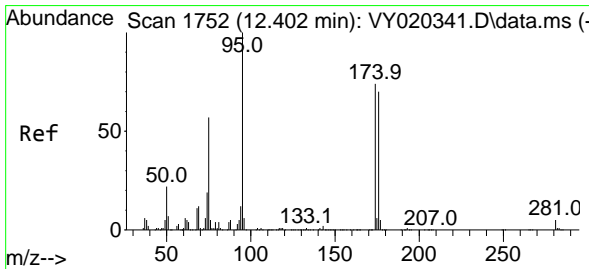
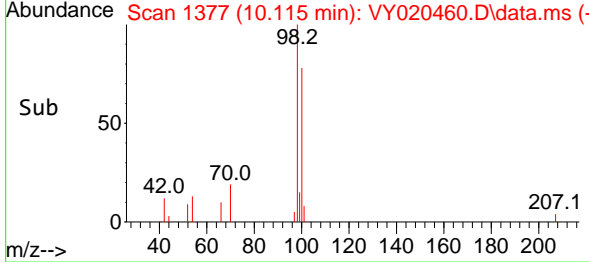
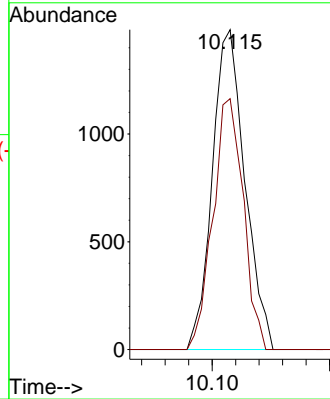


#50
 Toluene-d8
 Concen: 39.967 ug/l
 RT: 10.115 min Scan# 11
 Delta R.T. 0.006 min
 Lab File: VY020460.D
 Acq: 27 Nov 2024 13:20

Instrument :
 MSVOA_Y
 ClientSampleId :

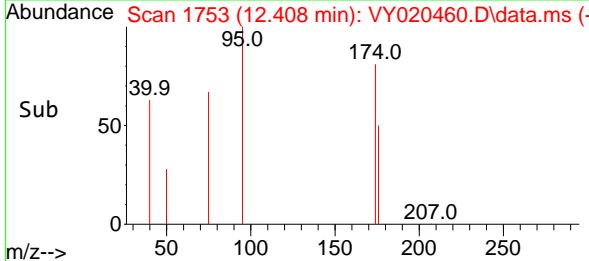
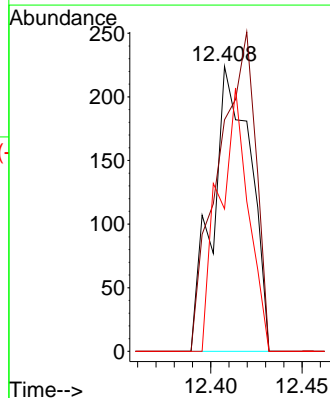
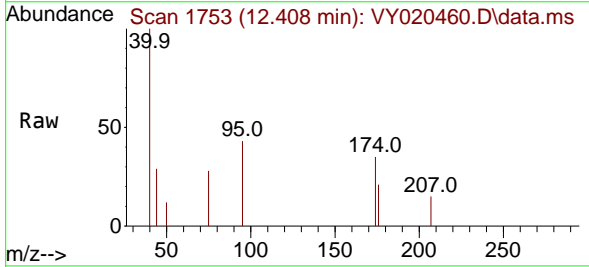


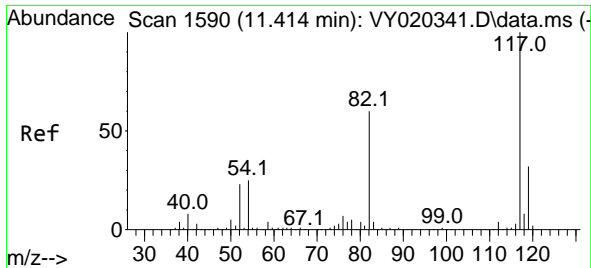
Tgt Ion: 98 Resp: 2856
 Ion Ratio Lower Upper
 98 100
 100 73.1 51.3 76.9



#62
 4-Bromofluorobenzene
 Concen: 14.061 ug/l
 RT: 12.408 min Scan# 1753
 Delta R.T. 0.006 min
 Lab File: VY020460.D
 Acq: 27 Nov 2024 13:20

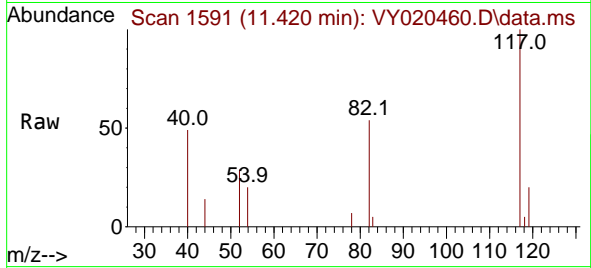
Tgt Ion: 95 Resp: 323
 Ion Ratio Lower Upper
 95 100
 174 110.8 0.0 156.8
 176 71.8 0.0 152.0



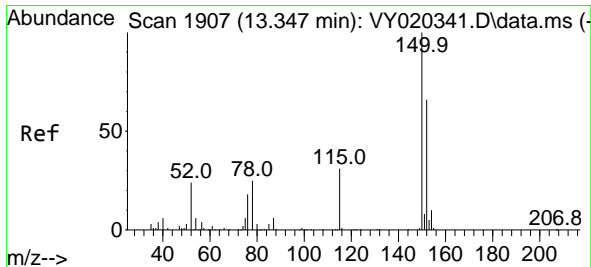
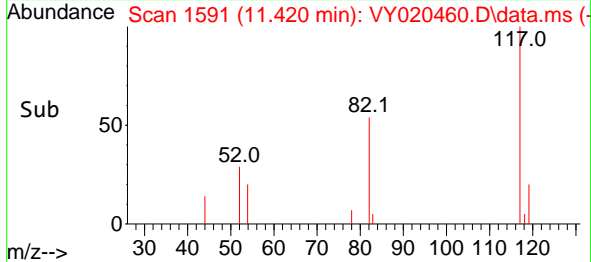
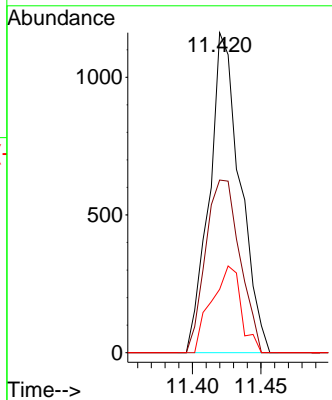


#63
 Chlorobenzene-d5
 Concen: 50.000 ug/l
 RT: 11.420 min Scan# 1117
 Delta R.T. 0.006 min
 Lab File: VY020460.D
 Acq: 27 Nov 2024 13:20

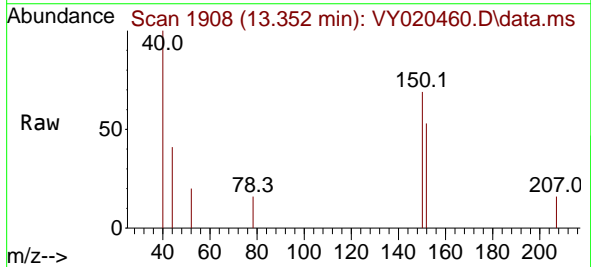
Instrument : MSVOA_Y
 ClientSampleId :



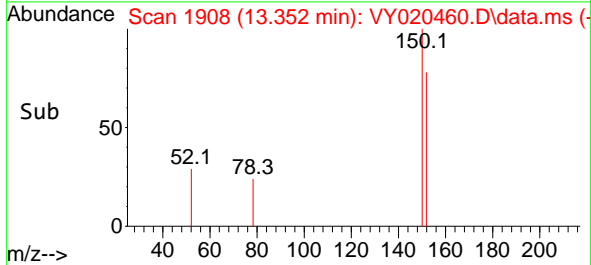
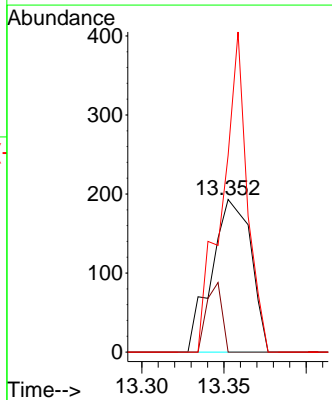
Tgt Ion	Resp	Ion Ratio	Lower	Upper
117	1817	100		
82	54.0	48.2	48.2	72.4
119	19.8	25.8		38.8#

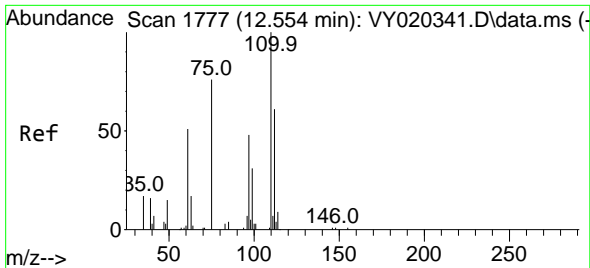


#72
 1,4-Dichlorobenzene-d4
 Concen: 50.000 ug/l
 RT: 13.352 min Scan# 1908
 Delta R.T. 0.006 min
 Lab File: VY020460.D
 Acq: 27 Nov 2024 13:20



Tgt Ion	Resp	Ion Ratio	Lower	Upper
152	321	100		
115	17.8	30.0	30.0	90.0#
150	134.0	0.0		348.2

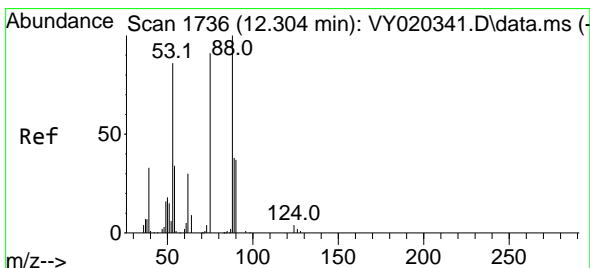
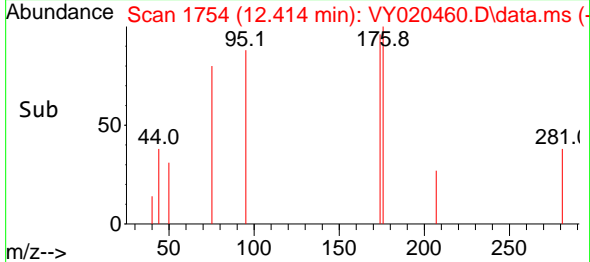
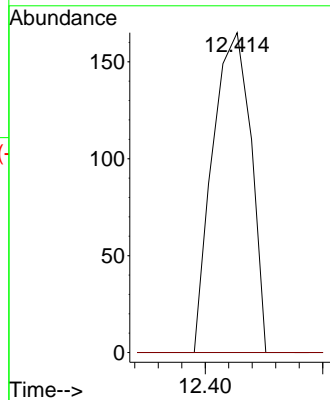
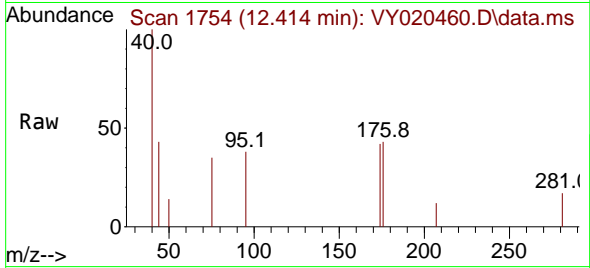




#76
 1,2,3-Trichloropropane
 Concen: 61.808 ug/l
 RT: 12.414 min Scan# 1754
 Delta R.T. -0.140 min
 Lab File: VY020460.D
 Acq: 27 Nov 2024 13:20

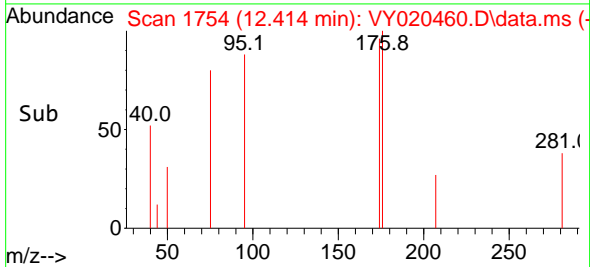
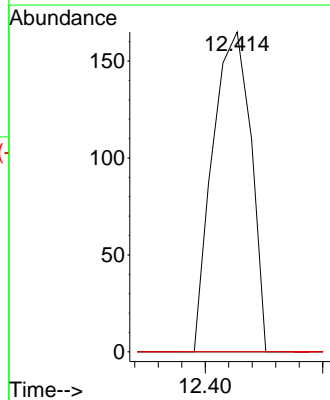
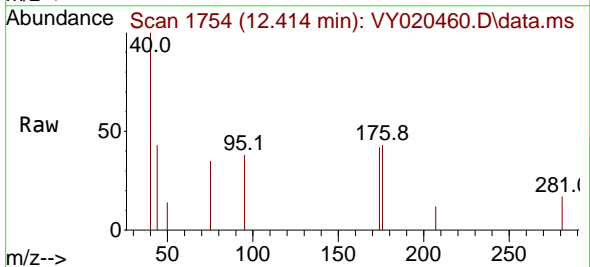
Instrument : MSVOA_Y
 ClientSampleId :

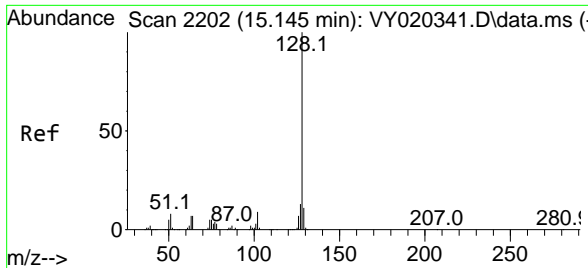
Tgt Ion: 75 Resp: 187
 Ion Ratio Lower Upper
 75 100
 77 0.0 0.0 0.0



#81
 trans-1,4-Dichloro-2-butene
 Concen: 121.109 ug/l
 RT: 12.414 min Scan# 1754
 Delta R.T. 0.110 min
 Lab File: VY020460.D
 Acq: 27 Nov 2024 13:20

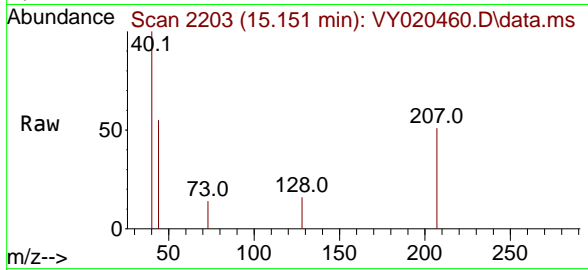
Tgt Ion: 75 Resp: 187
 Ion Ratio Lower Upper
 75 100
 53 0.0 81.1 121.7#
 89 0.0 35.1 52.7#





#95
 Naphthalene
 Concen: 4.503 ug/l
 RT: 15.151 min Scan# 21
 Delta R.T. 0.006 min
 Lab File: VY020460.D
 Acq: 27 Nov 2024 13:20

Instrument :
 MSVOA_Y
 ClientSampleId :



Tgt Ion:128 Resp: 45

Ion	Ratio	Lower	Upper
128	100		
127	0.0	10.5	15.7#
129	0.0	8.6	13.0#

