

Data Path : Z:\voasrv\HPCHEM1\MSVOA_Y\Data\VY112922\
 Data File : VY011627.D
 Acq On : 29 Nov 2022 17:09
 Operator : KP/MD
 Sample : N5812-01
 Misc : 4.62g/5.0mL/MSVOA_Y/SOIL
 ALS Vial : 19 Sample Multiplier: 1

Instrument :
 MSVOA_Y
 ClientSampleId :
 MH-16

Quant Time: Nov 30 04:44:55 2022
 Quant Method : Z:\voasrv\HPCHEM1\MSVOA_Y\methods\82Y111822S.M
 Quant Title : SW846 8260
 QLast Update : Sat Nov 19 22:37:14 2022
 Response via : Initial Calibration

Compound	R.T.	QIon	Response	Conc	Units	Dev(Min)
Internal Standards						
1) Pentafluorobenzene	7.795	168	190304	50.000	ug/l	0.00
34) 1,4-Difluorobenzene	8.691	114	356484	50.000	ug/l	0.00
63) Chlorobenzene-d5	11.490	117	345362	50.000	ug/l	0.00
72) 1,4-Dichlorobenzene-d4	13.428	152	155362	50.000	ug/l	0.00
System Monitoring Compounds						
33) 1,2-Dichloroethane-d4	8.143	65	131637	68.123	ug/l	0.00
Spiked Amount	50.000	Range	50 - 163	Recovery	=	136.240%
35) Dibromofluoromethane	7.722	113	114925	52.370	ug/l	0.00
Spiked Amount	50.000	Range	54 - 147	Recovery	=	104.740%
50) Toluene-d8	10.179	98	438307	54.963	ug/l	0.00
Spiked Amount	50.000	Range	49 - 140	Recovery	=	109.920%
62) 4-Bromofluorobenzene	12.483	95	144068	48.862	ug/l	0.00
Spiked Amount	50.000	Range	25 - 144	Recovery	=	97.720%

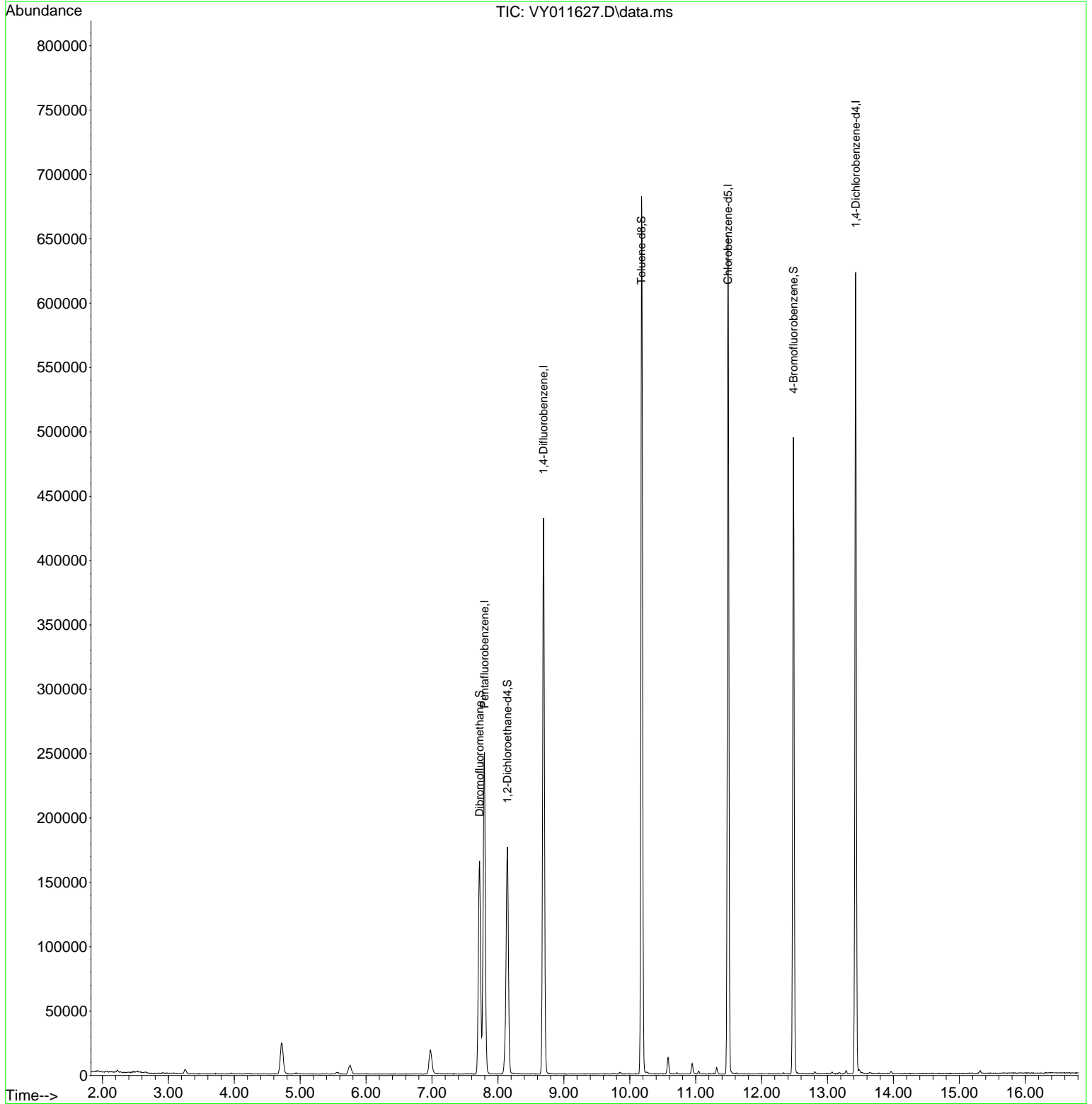
Target Compounds Qvalue

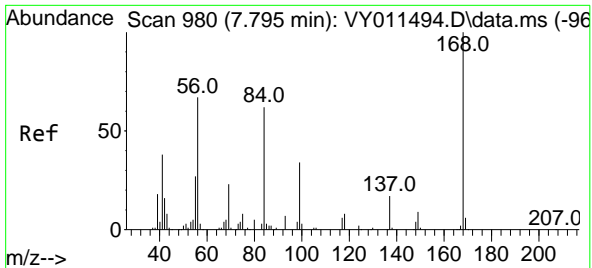
(#) = qualifier out of range (m) = manual integration (+) = signals summed

Data Path : Z:\voasrv\HPCHEM1\MSVOA_Y\Data\VY112922\
 Data File : VY011627.D
 Acq On : 29 Nov 2022 17:09
 Operator : KP/MD
 Sample : N5812-01
 Misc : 4.62g/5.0mL/MSVOA_Y/SOIL
 ALS Vial : 19 Sample Multiplier: 1

Instrument :
 MSVOA_Y
ClientSampleId :
 MH-16

Quant Time: Nov 30 04:44:55 2022
 Quant Method : Z:\voasrv\HPCHEM1\MSVOA_Y\methods\82Y111822S.M
 Quant Title : SW846 8260
 QLast Update : Sat Nov 19 22:37:14 2022
 Response via : Initial Calibration

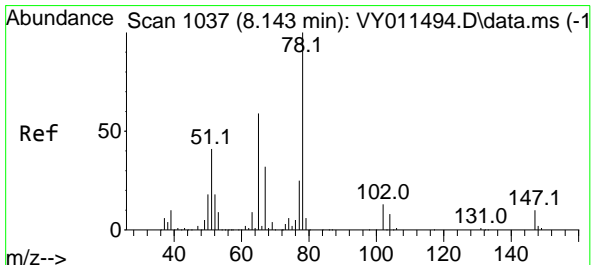
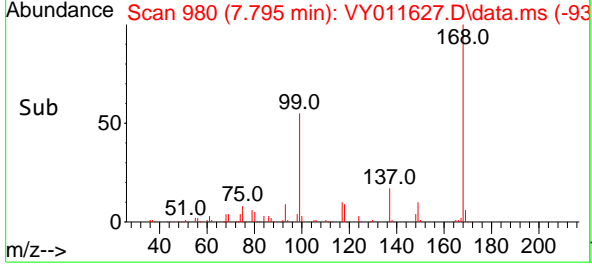
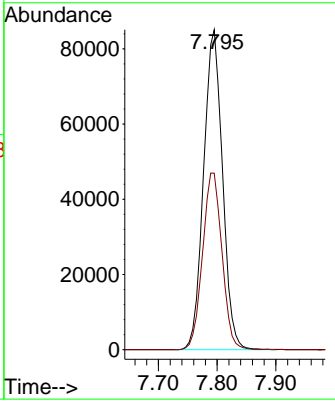
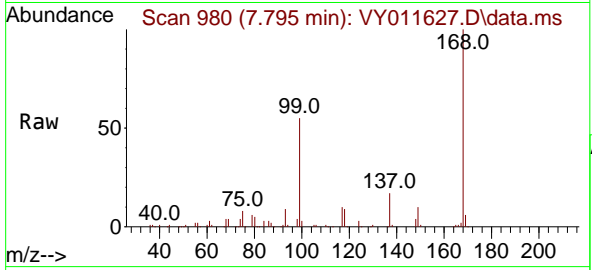




#1
 Pentafluorobenzene
 Concen: 50.000 ug/l
 RT: 7.795 min Scan# 980
 Delta R.T. 0.000 min
 Lab File: VY011627.D
 Acq: 29 Nov 2022 17:09

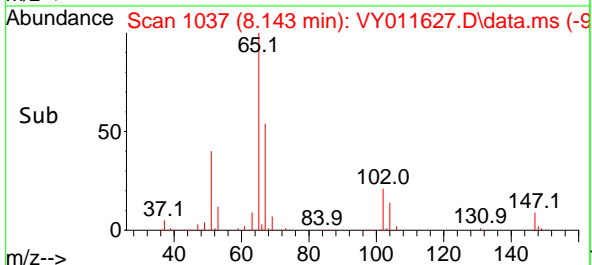
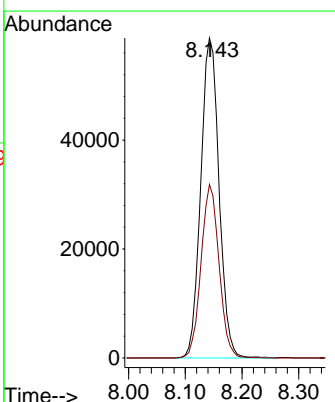
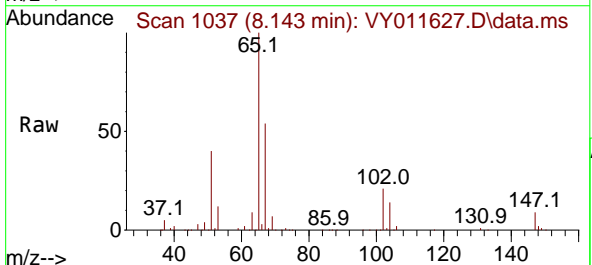
Instrument : MSVOA_Y
 ClientSampleId : MH-16

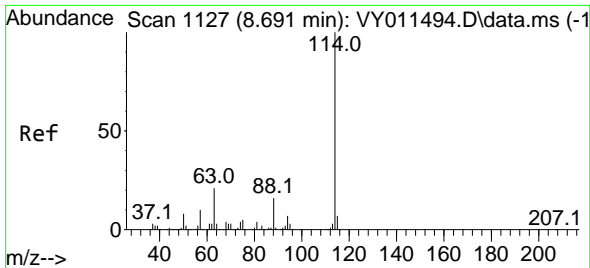
Tgt Ion:168 Resp: 190304
 Ion Ratio Lower Upper
 168 100
 99 55.1 46.9 70.3



#33
 1,2-Dichloroethane-d4
 Concen: 68.123 ug/l
 RT: 8.143 min Scan# 1037
 Delta R.T. -0.000 min
 Lab File: VY011627.D
 Acq: 29 Nov 2022 17:09

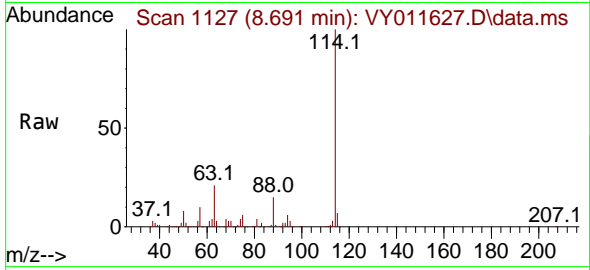
Tgt Ion: 65 Resp: 131637
 Ion Ratio Lower Upper
 65 100
 67 53.3 0.0 99.4



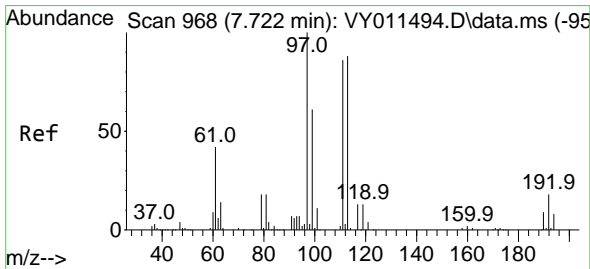
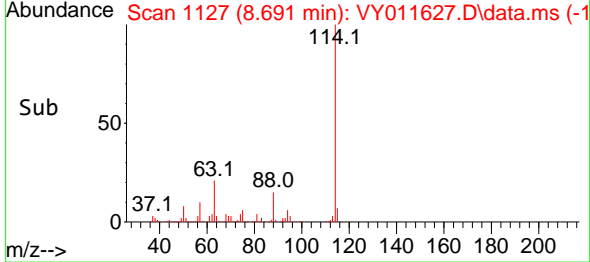
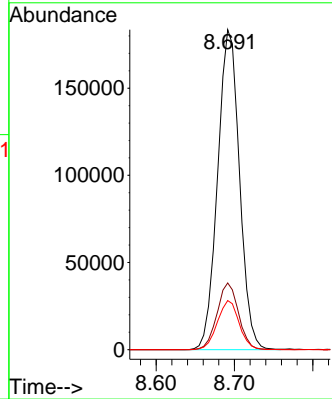


#34
 1,4-Difluorobenzene
 Concen: 50.000 ug/l
 RT: 8.691 min Scan# 1127
 Delta R.T. 0.000 min
 Lab File: VY011627.D
 Acq: 29 Nov 2022 17:09

Instrument : MSVOA_Y
 ClientSampleId : MH-16

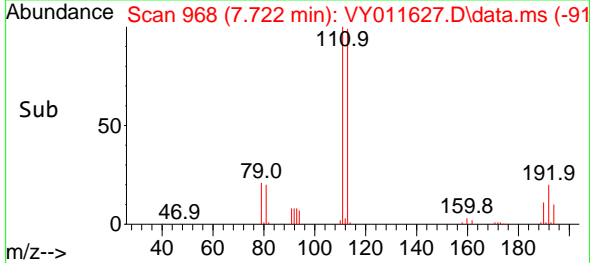
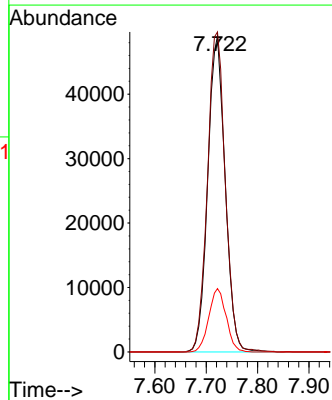
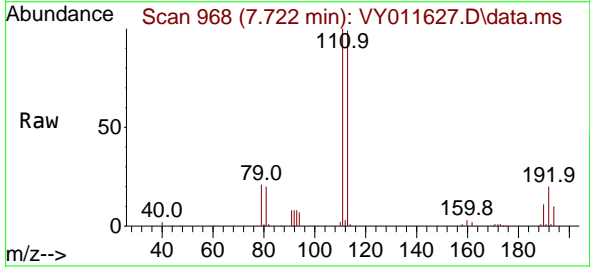


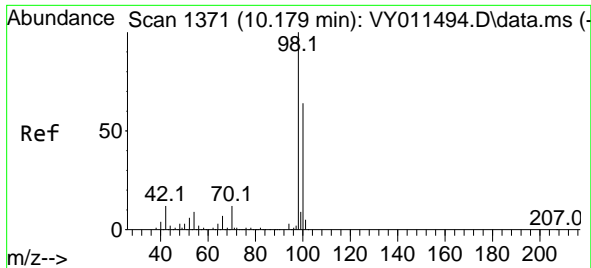
Tgt Ion:114 Resp: 356484
 Ion Ratio Lower Upper
 114 100
 63 20.9 0.0 43.2
 88 15.3 0.0 31.8



#35
 Dibromofluoromethane
 Concen: 52.370 ug/l
 RT: 7.722 min Scan# 968
 Delta R.T. -0.000 min
 Lab File: VY011627.D
 Acq: 29 Nov 2022 17:09

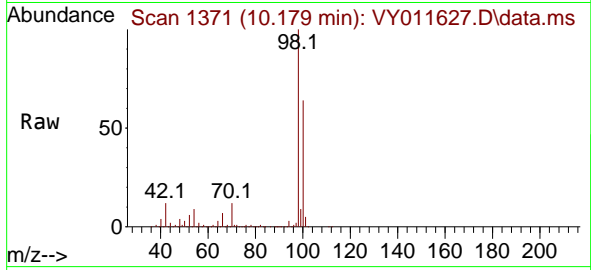
Tgt Ion:113 Resp: 114925
 Ion Ratio Lower Upper
 113 100
 111 104.0 82.6 124.0
 192 20.1 17.6 26.4



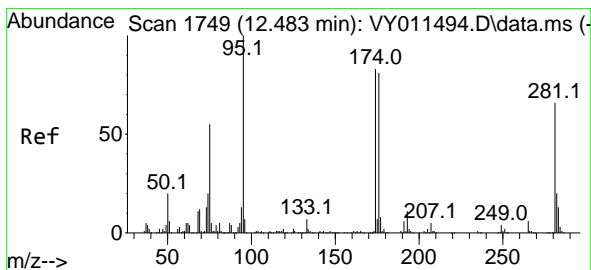
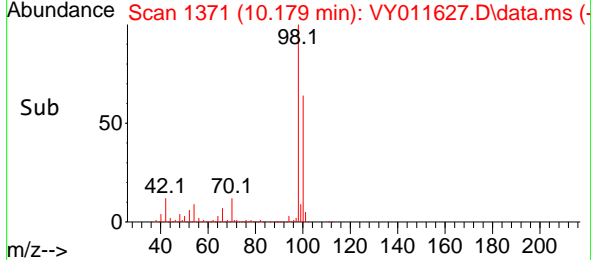
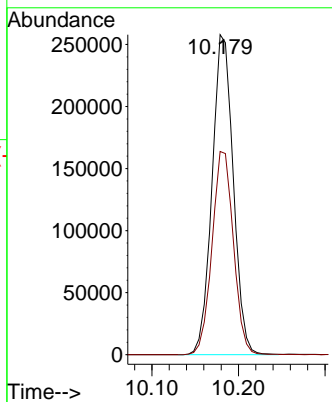


#50
 Toluene-d8
 Concen: 54.963 ug/l
 RT: 10.179 min Scan# 11
 Delta R.T. -0.000 min
 Lab File: VY011627.D
 Acq: 29 Nov 2022 17:09

Instrument :
 MSVOA_Y
 ClientSampleId :
 MH-16

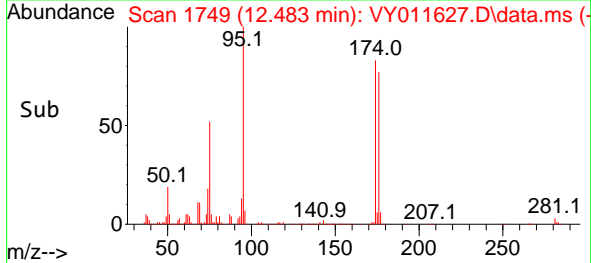
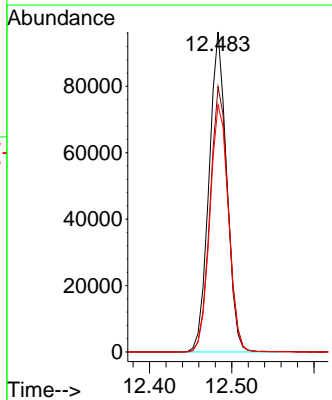
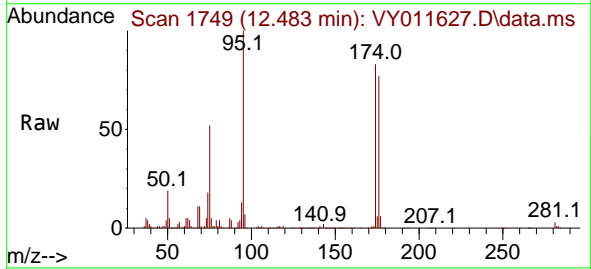


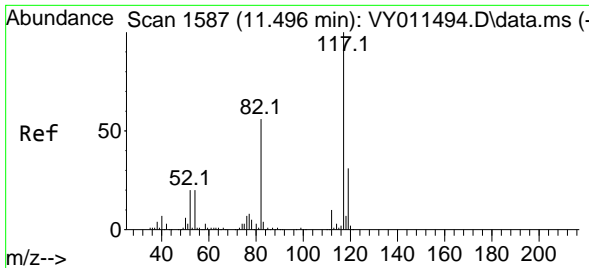
Tgt Ion: 98 Resp: 438307
 Ion Ratio Lower Upper
 98 100
 100 64.2 50.2 75.2



#62
 4-Bromofluorobenzene
 Concen: 48.862 ug/l
 RT: 12.483 min Scan# 1749
 Delta R.T. 0.000 min
 Lab File: VY011627.D
 Acq: 29 Nov 2022 17:09

Tgt Ion: 95 Resp: 144068
 Ion Ratio Lower Upper
 95 100
 174 85.5 0.0 177.0
 176 81.0 0.0 175.8



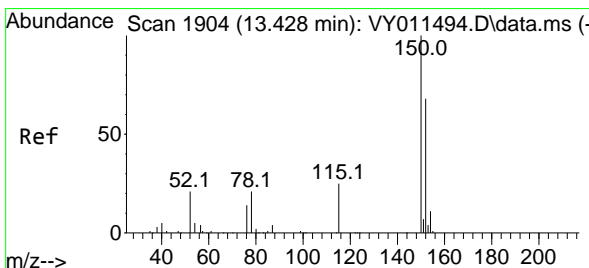
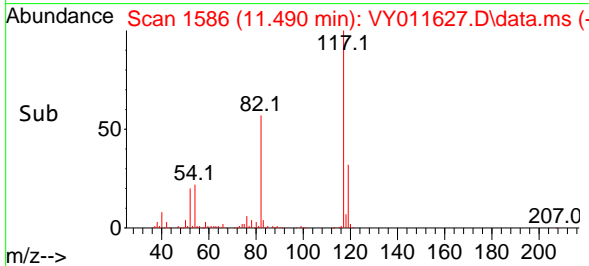
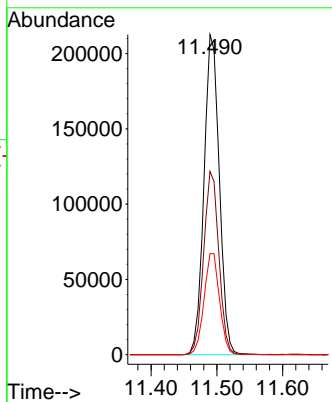
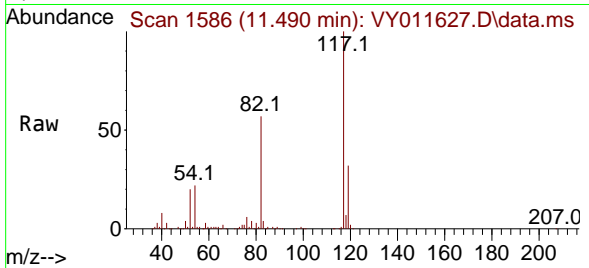


#63
 Chlorobenzene-d5
 Concen: 50.000 ug/l
 RT: 11.490 min Scan# 11
 Delta R.T. -0.006 min
 Lab File: VY011627.D
 Acq: 29 Nov 2022 17:09

Instrument : MSVOA_Y
 ClientSampleId : MH-16

Tgt Ion:117 Resp: 345362

Ion	Ratio	Lower	Upper
117	100		
82	57.3	43.0	64.4
119	31.6	25.4	38.0



#72
 1,4-Dichlorobenzene-d4
 Concen: 50.000 ug/l
 RT: 13.428 min Scan# 1904
 Delta R.T. 0.000 min
 Lab File: VY011627.D
 Acq: 29 Nov 2022 17:09

Tgt Ion:152 Resp: 155362

Ion	Ratio	Lower	Upper
152	100		
115	57.9	28.2	84.7
150	156.8	0.0	347.6

