

Data Path : Z:\voasrv\HPCHEM1\MSVOA\_Y\Data\VY121824\  
 Data File : VY020629.D  
 Acq On : 18 Dec 2024 12:33  
 Operator : SY/MD  
 Sample : P5277-02  
 Misc : 3.63g/5.0mL/MSVOA\_Y/SOIL/A  
 ALS Vial : 8 Sample Multiplier: 1

Instrument :  
 MSVOA\_Y  
 ClientSampleId :  
 COMP-2A

Integration Parameters: RTEINT.P  
 Integrator: RTE  
 Smoothing : ON Filtering: 5  
 Sampling : 1 Min Area: 3 % of largest Peak  
 Start Thrs: 0.2 Max Peaks: 100  
 Stop Thrs : 0 Peak Location: TOP

If leading or trailing edge < 100 prefer < Baseline drop else tangent >  
 Peak separation: 5

Method : Z:\voasrv\HPCHEM1\MSVOA\_Y\methods\82Y121724S.M  
 Title : SW846 8260

Signal : TIC: VY020629.D\data.ms

peak #	R.T. min	first scan	max scan	last scan	PK TY	peak height	corr. area	corr. % max.	% of total
1	4.616	464	475	486	rBV4	3379	10329	1.01%	0.202%
2	6.890	839	848	860	rBV2	7235	23311	2.27%	0.457%
3	7.634	959	970	976	rBV	123674	301199	29.38%	5.901%
4	7.707	976	982	998	rVB	218856	501674	48.93%	9.828%
5	8.061	1027	1040	1053	rBV2	134967	320484	31.26%	6.279%
6	8.616	1121	1131	1143	rBV	387324	763096	74.43%	14.950%
7	10.103	1368	1375	1392	rVB	582925	1025299	100.00%	20.087%
8	10.506	1436	1441	1448	rBV	8017	14970	1.46%	0.293%
9	11.414	1583	1590	1605	rBV	528252	849823	82.89%	16.649%
10	12.408	1744	1753	1763	rBV	379074	605019	59.01%	11.853%
11	13.200	1875	1883	1891	rVB5	6560	12228	1.19%	0.240%
12	13.347	1900	1907	1913	rBV	426247	651643	63.56%	12.767%
13	13.408	1913	1917	1924	rVB3	6131	11824	1.15%	0.232%
14	15.230	2208	2216	2223	rBV3	8058	13408	1.31%	0.263%

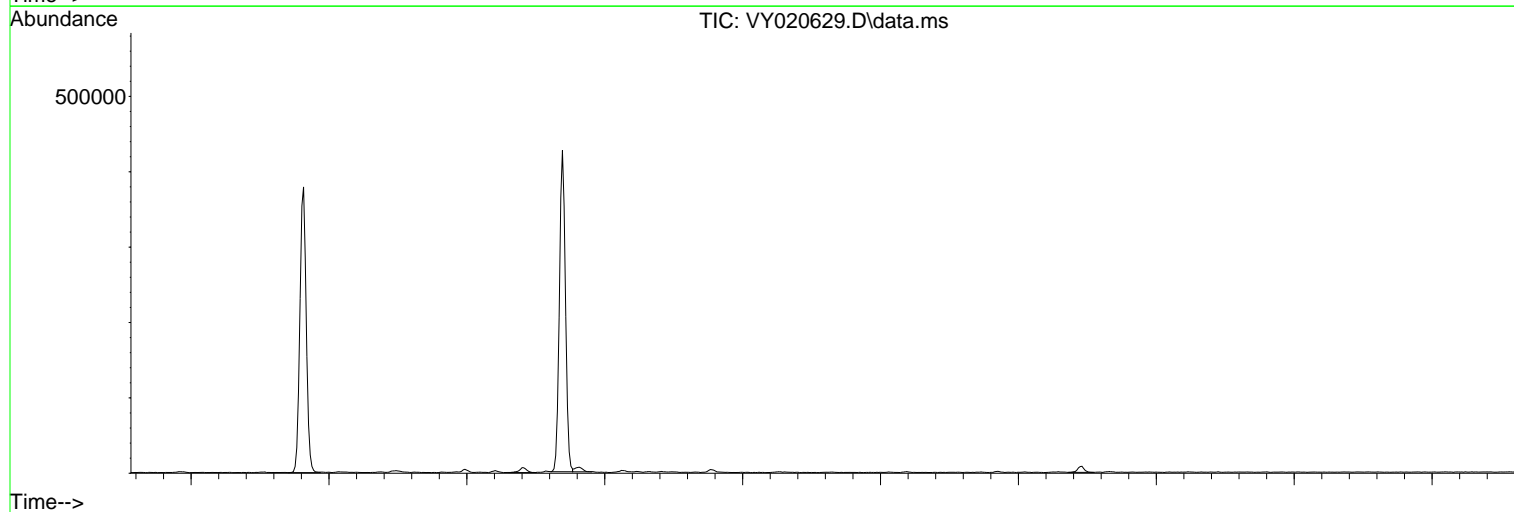
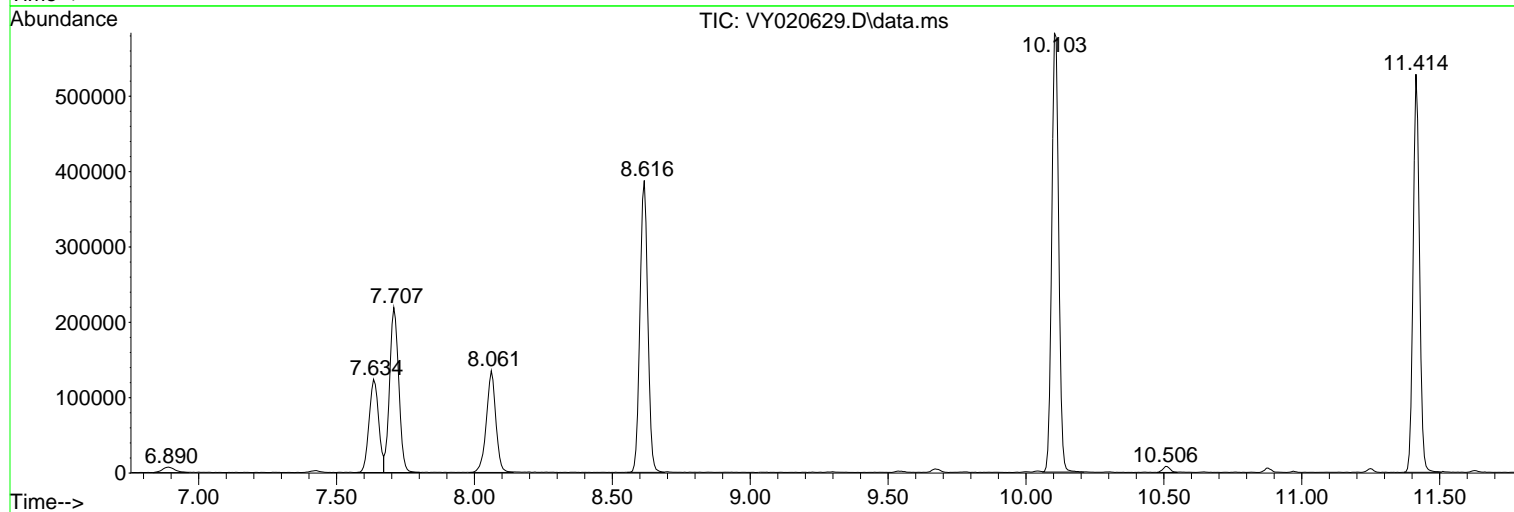
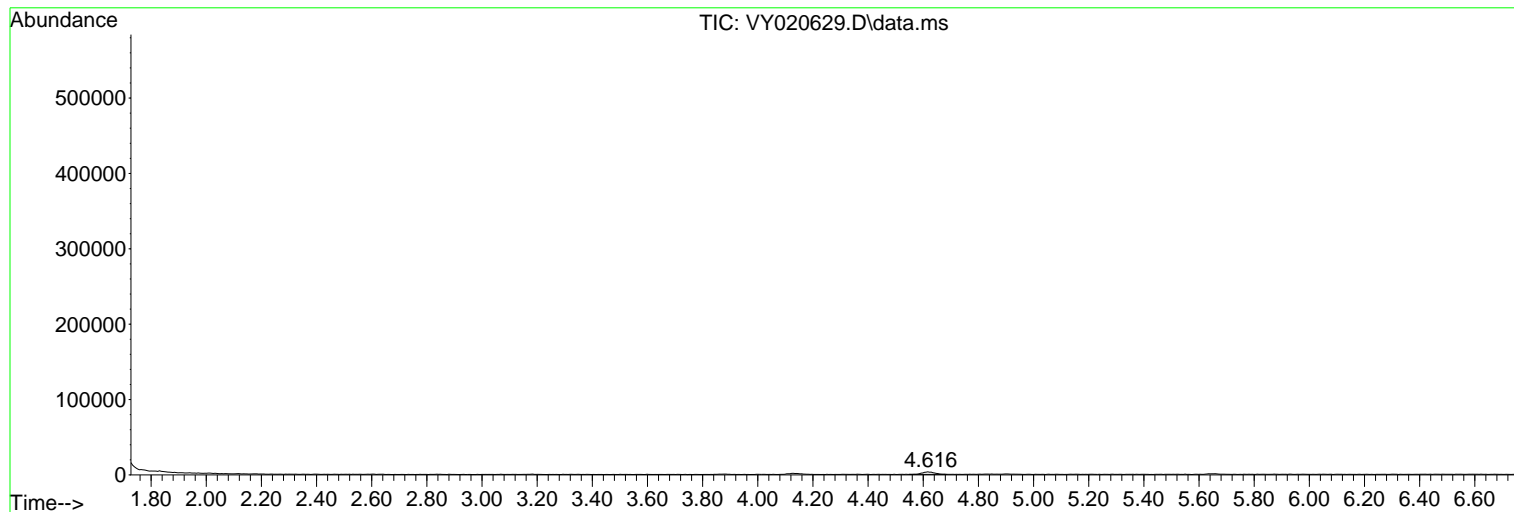
Sum of corrected areas: 5104307

Data Path : Z:\voasrv\HPCHEM1\MSVOA\_Y\Data\VY121824\  
Data File : VY020629.D  
Acq On : 18 Dec 2024 12:33  
Operator : SY/MD  
Sample : P5277-02  
Misc : 3.63g/5.0mL/MSVOA\_Y/SOIL/A  
ALS Vial : 8 Sample Multiplier: 1

Instrument :  
MSVOA\_Y  
ClientSampleId :  
COMP-2A

Quant Method : Z:\voasrv\HPCHEM1\MSVOA\_Y\methods\82Y121724S.M  
Quant Title : SW846 8260

TIC Library : C:\Database\NIST20.L  
TIC Integration Parameters: LSCINT.P



Data Path : Z:\voasrv\HPCHEM1\MSVOA\_Y\Data\VY121824\  
Data File : VY020629.D  
Acq On : 18 Dec 2024 12:33  
Operator : SY/MD  
Sample : P5277-02  
Misc : 3.63g/5.0mL/MSVOA\_Y/SOIL/A  
ALS Vial : 8 Sample Multiplier: 1

Instrument :  
MSVOA\_Y  
ClientSampleId :  
COMP-2A

Quant Method : Z:\voasrv\HPCHEM1\MSVOA\_Y\methods\82Y121724S.M  
Quant Title : SW846 8260

TIC Library : C:\Database\NIST20.L  
TIC Integration Parameters: LSCINT.P

No Library Search Compounds Detected

\*\*\*\*\*

Data Path : Z:\voasrv\HPCHEM1\MSVOA\_Y\Data\VY121824\  
Data File : VY020629.D  
Acq On : 18 Dec 2024 12:33  
Operator : SY/MD  
Sample : P5277-02  
Misc : 3.63g/5.0mL/MSVOA\_Y/SOIL/A  
ALS Vial : 8 Sample Multiplier: 1

Instrument :  
MSVOA\_Y  
ClientSampleId :  
COMP-2A

Quant Method : Z:\voasrv\HPCHEM1\MSVOA\_Y\methods\82Y121724S.M  
Quant Title : SW846 8260

TIC Library : C:\Database\NIST20.L  
TIC Integration Parameters: LSCINT.P

TIC Top Hit name	RT	EstConc	Units	Response	#	RT	Resp	Conc
------------------	----	---------	-------	----------	---	----	------	------

-----