

Data Path : Z:\voasrv\HPCHEM1\MSVOA_Y\Data\VY122623\
 Data File : VY016858.D
 Acq On : 26 Dec 2023 17:16
 Operator : SY/MD
 Sample : 06011-01
 Misc : 5.02g/5.0mL/MSVOA_Y/SOIL/A
 ALS Vial : 18 Sample Multiplier: 1

Instrument :
 MSVOA_Y
 ClientSampleId :

Quant Time: Dec 27 01:36:52 2023
 Quant Method : Z:\voasrv\HPCHEM1\MSVOA_Y\methods\82Y122023S.M
 Quant Title : SW846 8260
 QLast Update : Thu Dec 21 01:49:45 2023
 Response via : Initial Calibration

Compound	R.T.	QIon	Response	Conc	Units	Dev(Min)

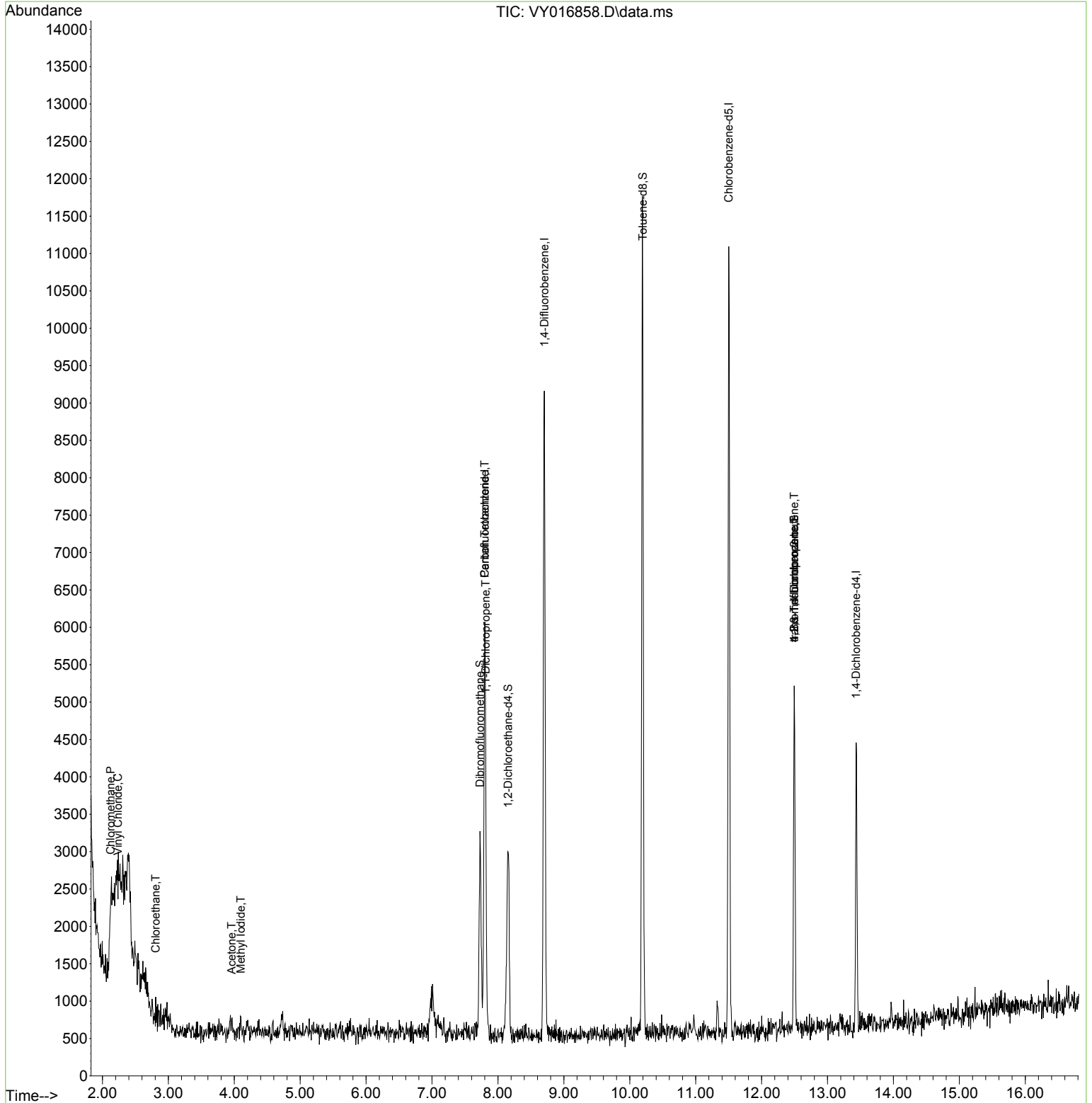
Internal Standards						
1) Pentafluorobenzene	7.801	168	4475	50.000	ug/l	0.00
34) 1,4-Difluorobenzene	8.703	114	7904	50.000	ug/l	0.00
63) Chlorobenzene-d5	11.502	117	5921	50.000	ug/l	0.00
72) 1,4-Dichlorobenzene-d4	13.434	152	1192	50.000	ug/l	0.00
System Monitoring Compounds						
33) 1,2-Dichloroethane-d4	8.155	65	2134	52.237	ug/l	0.00
Spiked Amount	50.000	Range 50 - 163	Recovery	=	104.480%	
35) Dibromofluoromethane	7.728	113	2016	44.527	ug/l	0.00
Spiked Amount	50.000	Range 54 - 147	Recovery	=	89.060%	
50) Toluene-d8	10.197	98	7662	46.944	ug/l	0.00
Spiked Amount	50.000	Range 58 - 134	Recovery	=	93.880%	
62) 4-Bromofluorobenzene	12.495	95	1435	27.100	ug/l	0.00
Spiked Amount	50.000	Range 30 - 143	Recovery	=	54.200%	
Target Compounds						
					Qvalue	
3) Chloromethane	2.125	50	128	2.177	ug/l #	66
4) Vinyl Chloride	2.235	62	175	2.636	ug/l #	43
6) Chloroethane	2.808	64	199	4.423	ug/l #	43
10) Methyl Iodide	4.100	142	65	1.315	ug/l #	40
16) Acetone	3.960	43	90	8.147	ug/l #	41
20) Methylene Chloride	4.734	84	158	Below Cal	#	59
36) 1,1-Dichloropropene	7.813	75	390	5.373	ug/l #	42
38) Carbon Tetrachloride	7.801	117	420	5.847	ug/l #	12
76) 1,2,3-Trichloropropane	12.495	75	818	62.078	ug/l #	100
81) trans-1,4-Dichloro-2-b...	12.495	75	818	145.787	ug/l #	12

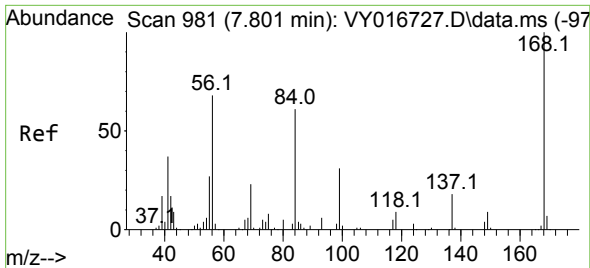
(#) = qualifier out of range (m) = manual integration (+) = signals summed

Data Path : Z:\voasrv\HPCHEM1\MSVOA_Y\Data\VY122623\
 Data File : VY016858.D
 Acq On : 26 Dec 2023 17:16
 Operator : SY/MD
 Sample : 06011-01
 Misc : 5.02g/5.0mL/MSVOA_Y/SOIL/A
 ALS Vial : 18 Sample Multiplier: 1

Instrument :
 MSVOA_Y
 ClientSampleId :

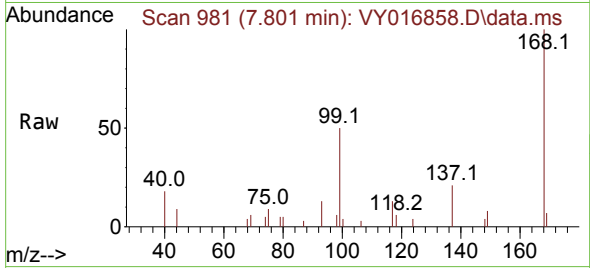
Quant Time: Dec 27 01:36:52 2023
 Quant Method : Z:\voasrv\HPCHEM1\MSVOA_Y\methods\82Y122023S.M
 Quant Title : SW846 8260
 QLast Update : Thu Dec 21 01:49:45 2023
 Response via : Initial Calibration



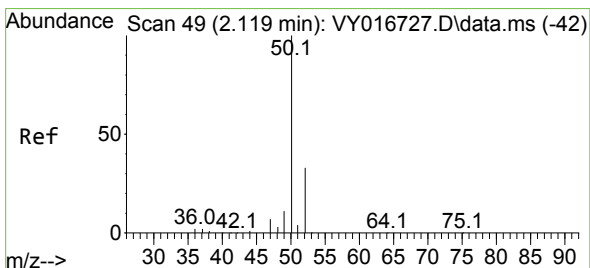
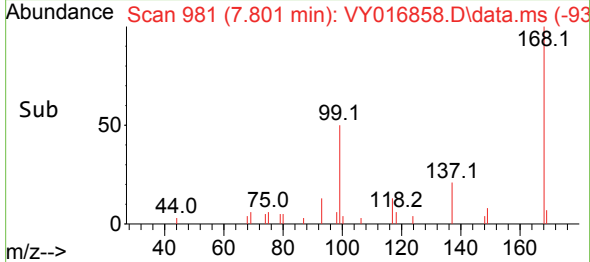
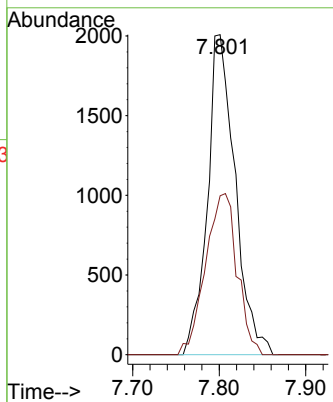


#1
 Pentafluorobenzene
 Concen: 50.000 ug/l
 RT: 7.801 min Scan# 91
 Delta R.T. 0.000 min
 Lab File: VY016858.D
 Acq: 26 Dec 2023 17:16

Instrument :
 MSVOA_Y
 ClientSampleId :

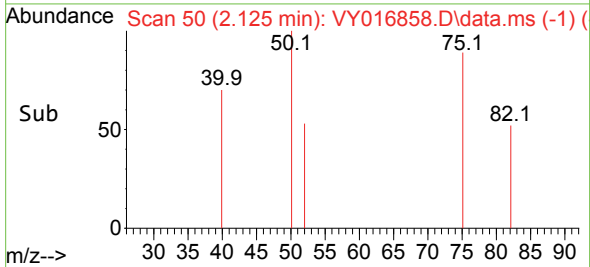
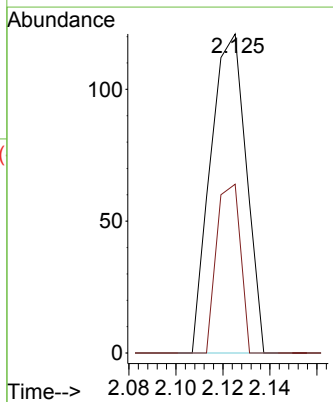
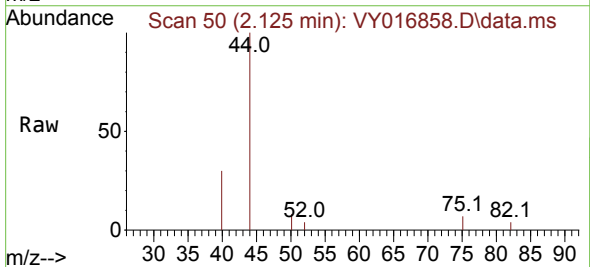


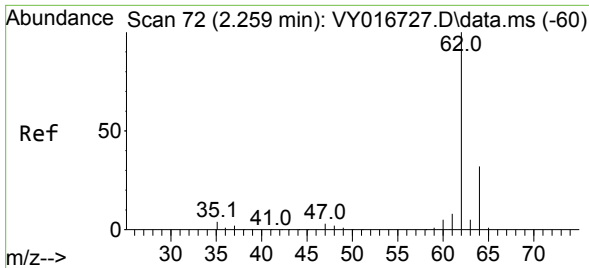
Tgt Ion:168 Resp: 4475
 Ion Ratio Lower Upper
 168 100
 99 49.7 44.2 66.4



#3
 Chloromethane
 Concen: 2.177 ug/l
 RT: 2.125 min Scan# 50
 Delta R.T. 0.006 min
 Lab File: VY016858.D
 Acq: 26 Dec 2023 17:16

Tgt Ion: 50 Resp: 128
 Ion Ratio Lower Upper
 50 100
 52 52.9 26.7 40.1#

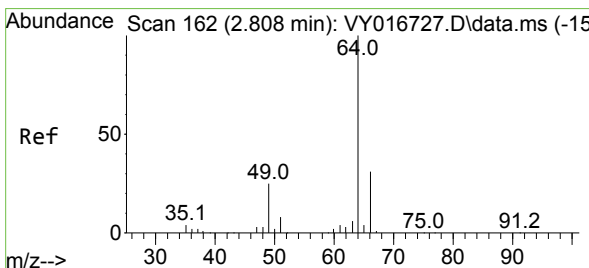
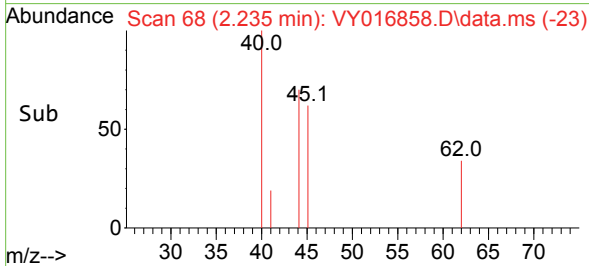
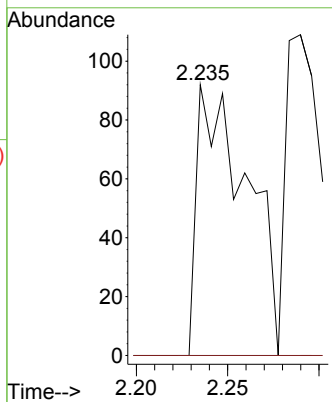
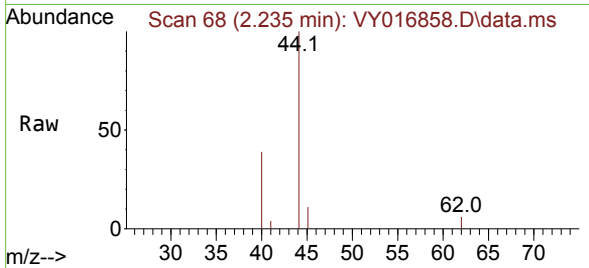




#4
 Vinyl Chloride
 Concen: 2.636 ug/l
 RT: 2.235 min Scan# 61
 Delta R.T. -0.024 min
 Lab File: VY016858.D
 Acq: 26 Dec 2023 17:16

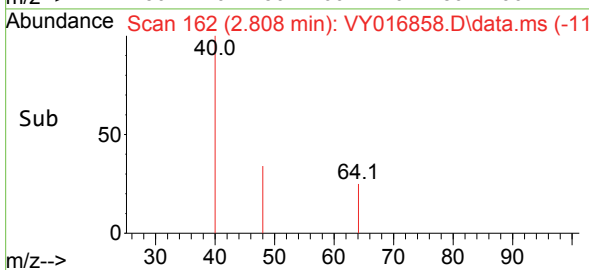
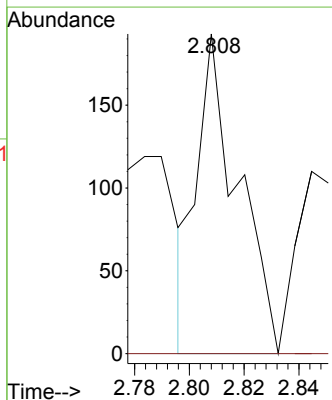
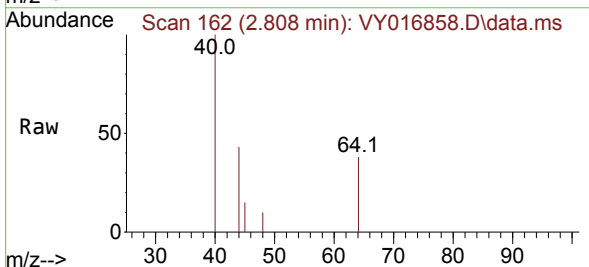
Instrument :
 MSVOA_Y
 ClientSampleId :

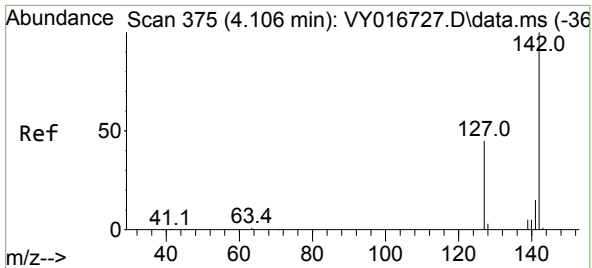
Tgt Ion: 62 Resp: 175
 Ion Ratio Lower Upper
 62 100
 64 0.0 25.7 38.5#



#6
 Chloroethane
 Concen: 4.423 ug/l
 RT: 2.808 min Scan# 162
 Delta R.T. 0.000 min
 Lab File: VY016858.D
 Acq: 26 Dec 2023 17:16

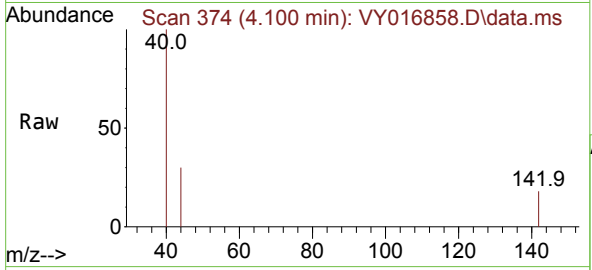
Tgt Ion: 64 Resp: 199
 Ion Ratio Lower Upper
 64 100
 66 0.0 25.1 37.7#



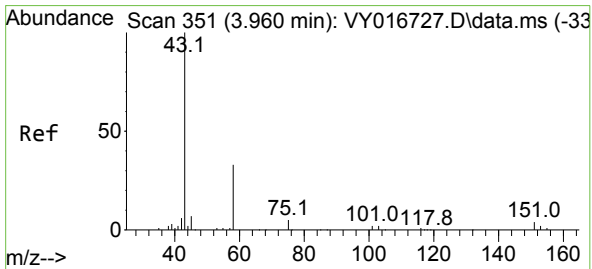
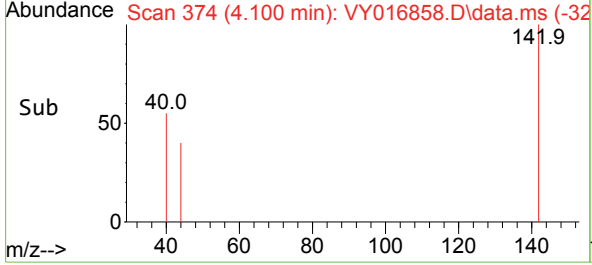
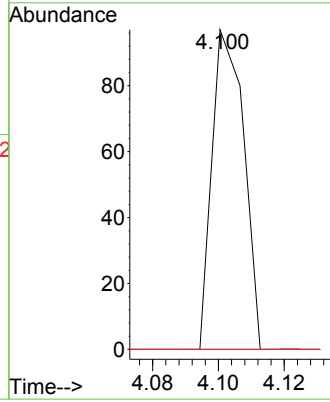


#10
Methyl Iodide
Concen: 1.315 ug/l
RT: 4.100 min Scan# 31
Delta R.T. -0.006 min
Lab File: VY016858.D
Acq: 26 Dec 2023 17:16

Instrument :
MSVOA_Y
ClientSampleId :

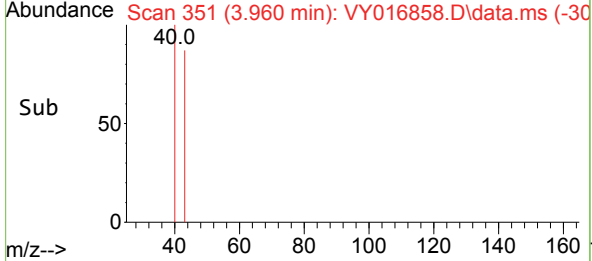
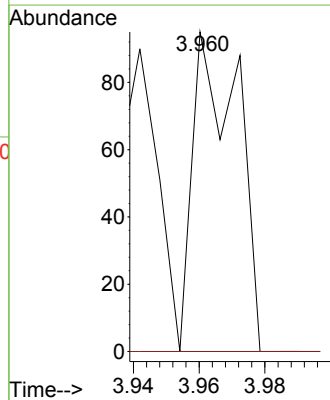
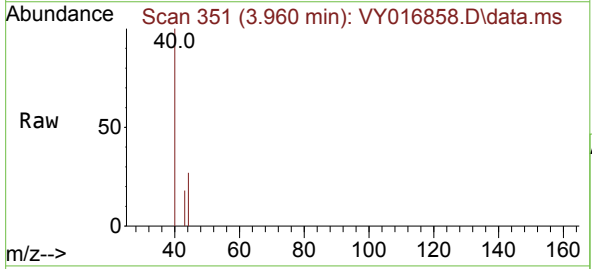


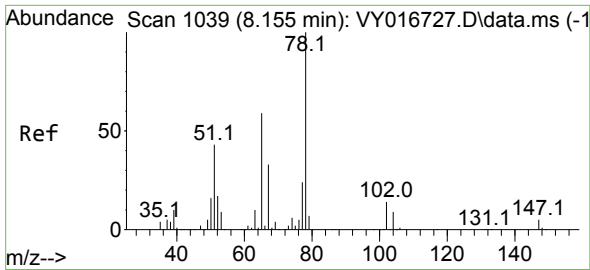
Tgt Ion:142 Resp: 65
Ion Ratio Lower Upper
142 100
127 0.0 35.1 52.7#
141 0.0 11.8 17.6#



#16
Acetone
Concen: 8.147 ug/l
RT: 3.960 min Scan# 351
Delta R.T. 0.000 min
Lab File: VY016858.D
Acq: 26 Dec 2023 17:16

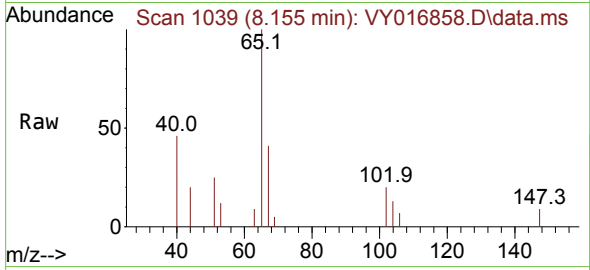
Tgt Ion: 43 Resp: 90
Ion Ratio Lower Upper
43 100
58 0.0 26.6 39.8#



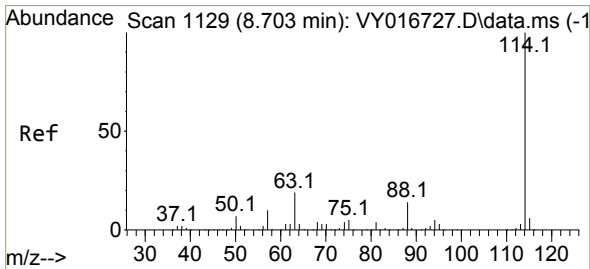
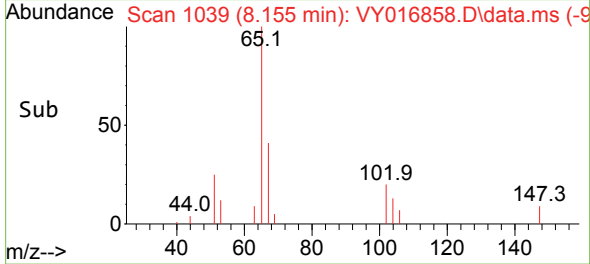
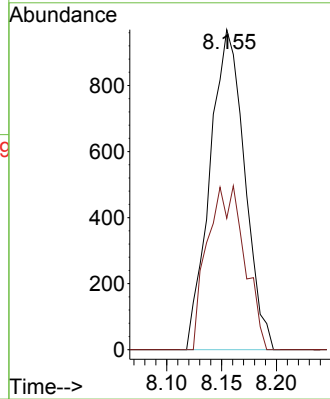


#33
 1,2-Dichloroethane-d4
 Concen: 52.237 ug/l
 RT: 8.155 min Scan# 1039
 Delta R.T. 0.000 min
 Lab File: VY016858.D
 Acq: 26 Dec 2023 17:16

Instrument :
 MSVOA_Y
 ClientSampleId :

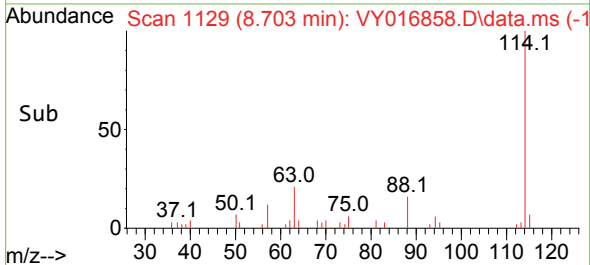
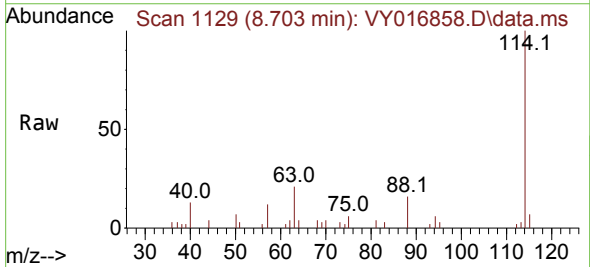
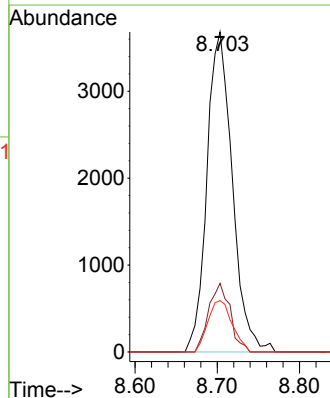


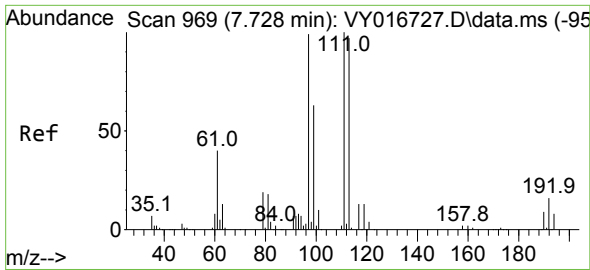
Tgt Ion: 65 Resp: 2134
 Ion Ratio Lower Upper
 65 100
 67 54.8 0.0 109.0



#34
 1,4-Difluorobenzene
 Concen: 50.000 ug/l
 RT: 8.703 min Scan# 1129
 Delta R.T. 0.000 min
 Lab File: VY016858.D
 Acq: 26 Dec 2023 17:16

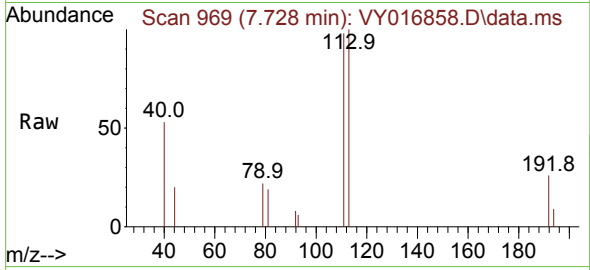
Tgt Ion: 114 Resp: 7904
 Ion Ratio Lower Upper
 114 100
 63 21.5 0.0 37.4
 88 16.1 0.0 29.0



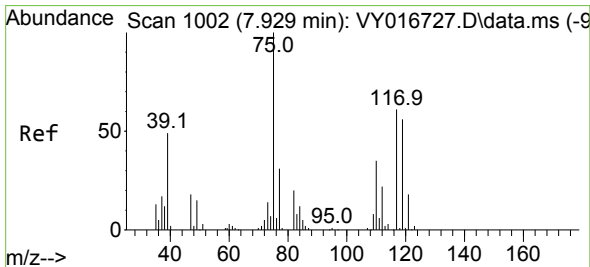
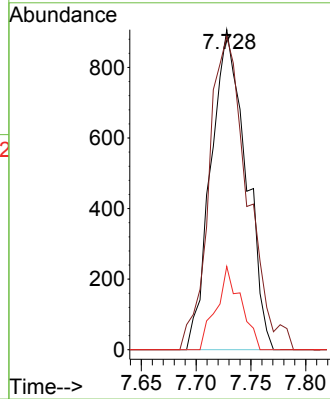
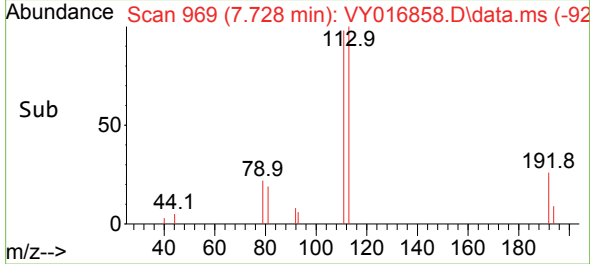


#35
 Dibromofluoromethane
 Concen: 44.527 ug/l
 RT: 7.728 min Scan# 90
 Delta R.T. 0.000 min
 Lab File: VY016858.D
 Acq: 26 Dec 2023 17:16

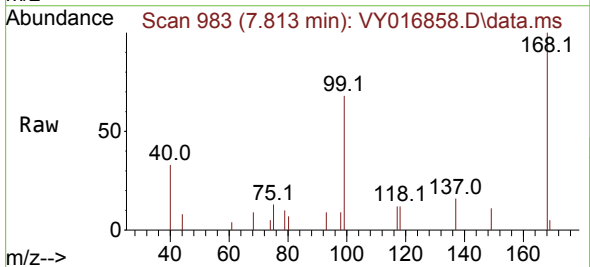
Instrument :
 MSVOA_Y
 ClientSampleId :



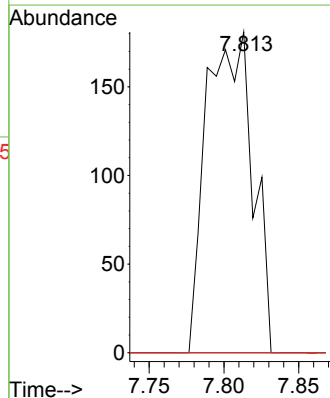
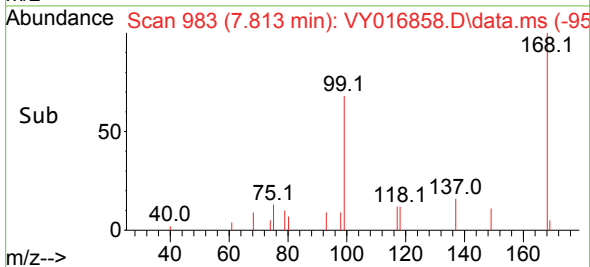
Tgt Ion:113 Resp: 2016
 Ion Ratio Lower Upper
 113 100
 111 107.5 83.8 125.6
 192 18.4 14.5 21.7

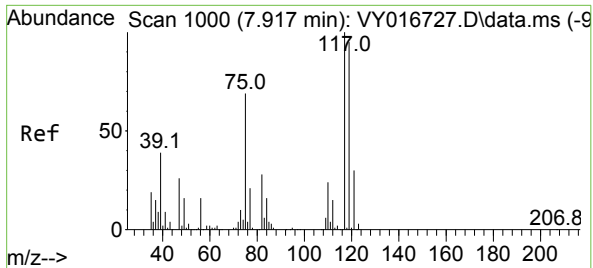


#36
 1,1-Dichloropropene
 Concen: 5.373 ug/l
 RT: 7.813 min Scan# 983
 Delta R.T. -0.116 min
 Lab File: VY016858.D
 Acq: 26 Dec 2023 17:16



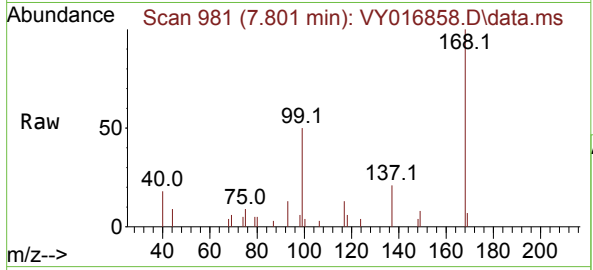
Tgt Ion: 75 Resp: 390
 Ion Ratio Lower Upper
 75 100
 110 0.0 17.4 52.3#
 77 0.0 24.7 37.1#



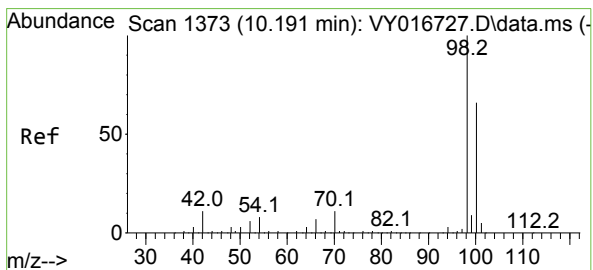
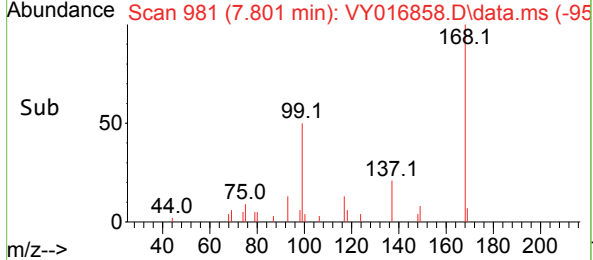
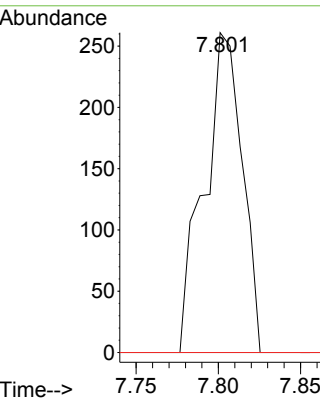


#38
 Carbon Tetrachloride
 Concen: 5.847 ug/l
 RT: 7.801 min Scan# 98
 Delta R.T. -0.116 min
 Lab File: VY016858.D
 Acq: 26 Dec 2023 17:16

Instrument :
 MSVOA_Y
 ClientSampleId :

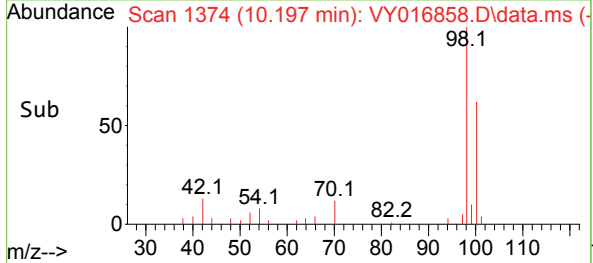
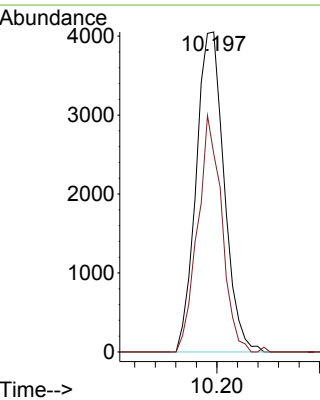
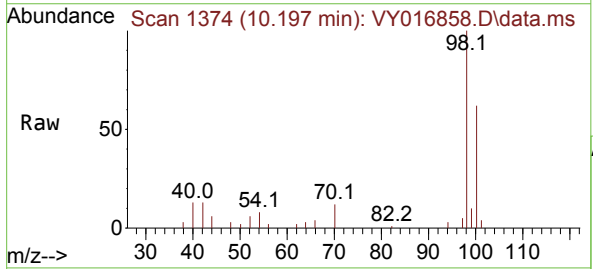


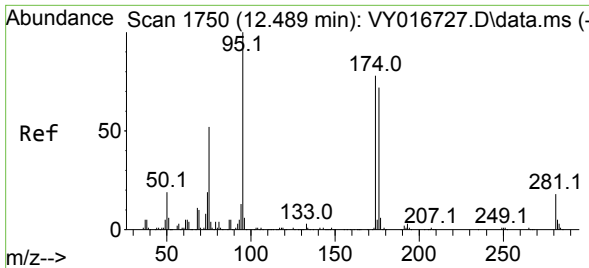
Tgt Ion: 117 Resp: 420
 Ion Ratio Lower Upper
 117 100
 119 0.0 76.0 114.0#
 121 0.0 24.2 36.2#



#50
 Toluene-d8
 Concen: 46.944 ug/l
 RT: 10.197 min Scan# 1374
 Delta R.T. 0.006 min
 Lab File: VY016858.D
 Acq: 26 Dec 2023 17:16

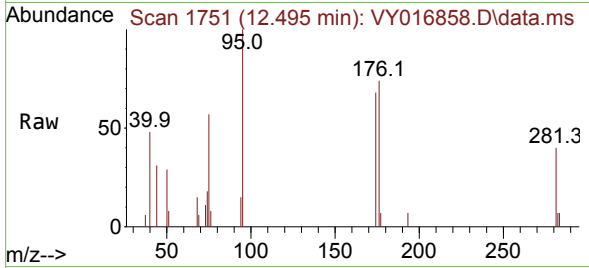
Tgt Ion: 98 Resp: 7662
 Ion Ratio Lower Upper
 98 100
 100 63.4 52.3 78.5





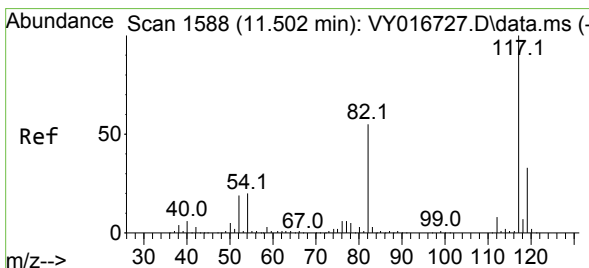
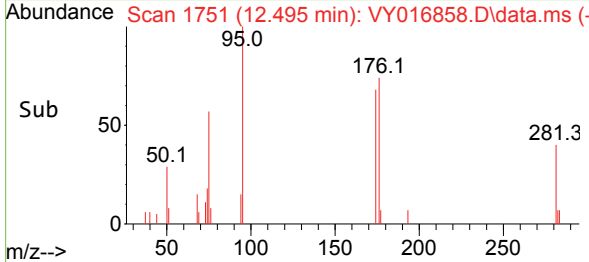
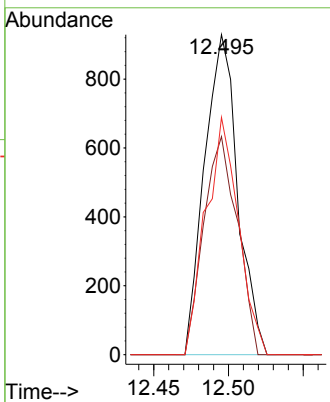
#62
 4-Bromofluorobenzene
 Concen: 27.100 ug/l
 RT: 12.495 min Scan# 1751
 Delta R.T. 0.006 min
 Lab File: VY016858.D
 Acq: 26 Dec 2023 17:16

Instrument : MSVOA_Y
 ClientSampleId :



Tgt Ion: 95 Resp: 1435

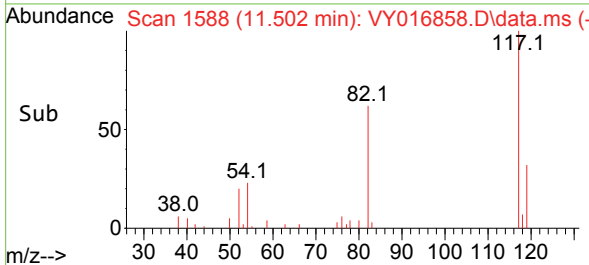
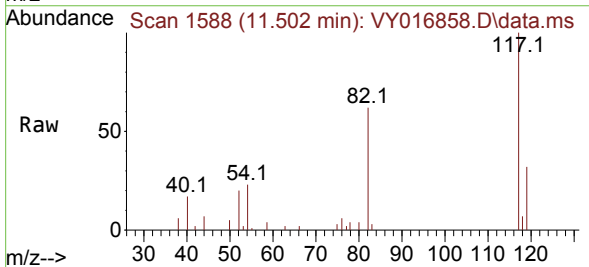
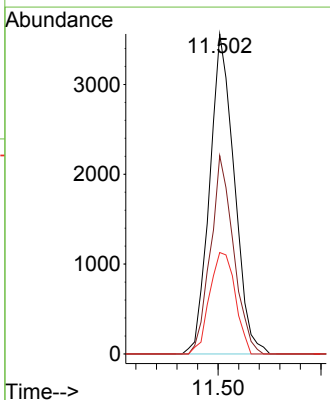
Ion	Ratio	Lower	Upper
95	100		
174	68.9	0.0	160.0
176	73.0	0.0	151.8

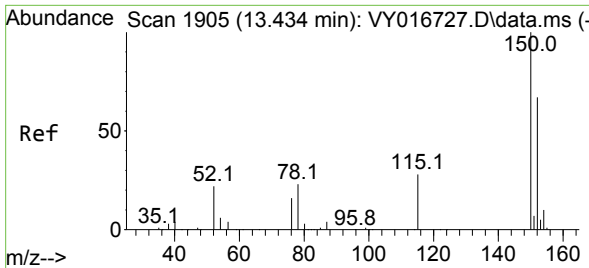


#63
 Chlorobenzene-d5
 Concen: 50.000 ug/l
 RT: 11.502 min Scan# 1588
 Delta R.T. 0.000 min
 Lab File: VY016858.D
 Acq: 26 Dec 2023 17:16

Tgt Ion: 117 Resp: 5921

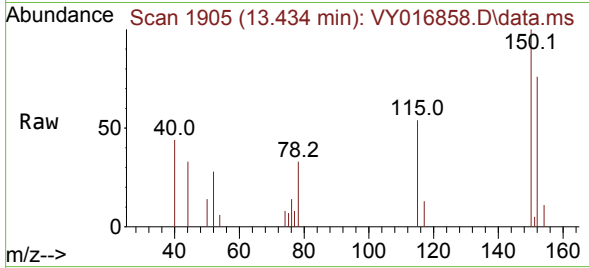
Ion	Ratio	Lower	Upper
117	100		
82	62.0	43.8	65.8
119	31.7	26.5	39.7



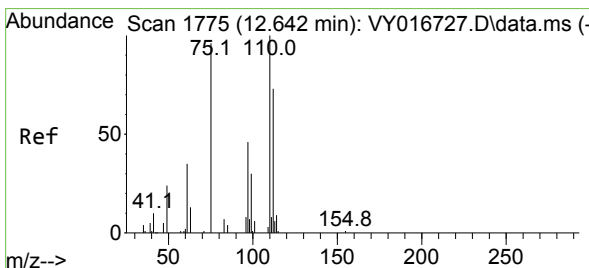
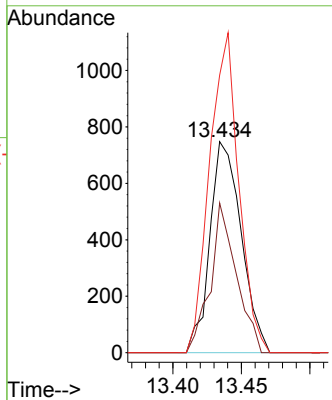
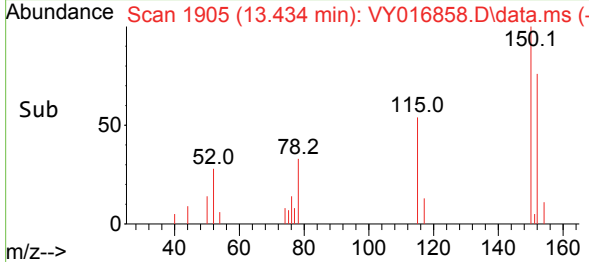


#72
 1,4-Dichlorobenzene-d4
 Concen: 50.000 ug/l
 RT: 13.434 min Scan# 1905
 Delta R.T. 0.000 min
 Lab File: VY016858.D
 Acq: 26 Dec 2023 17:16

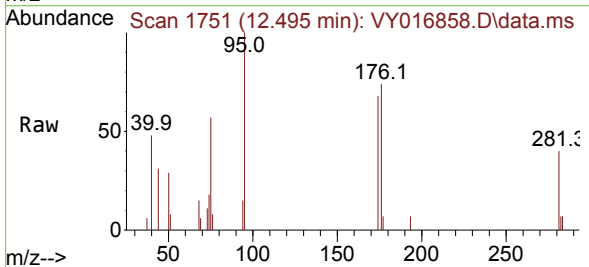
Instrument : MSVOA_Y
 ClientSampleId :



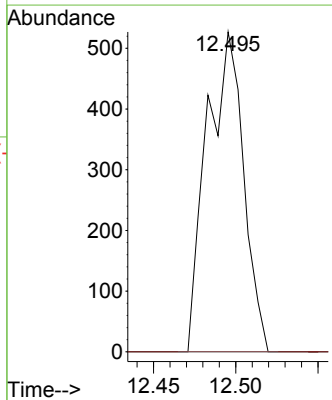
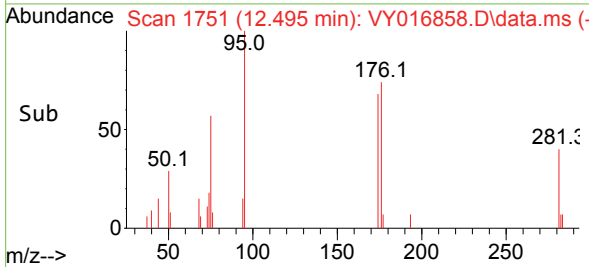
Tgt Ion:152 Resp: 1192
 Ion Ratio Lower Upper
 152 100
 115 58.8 30.0 90.0
 150 141.4 0.0 344.6

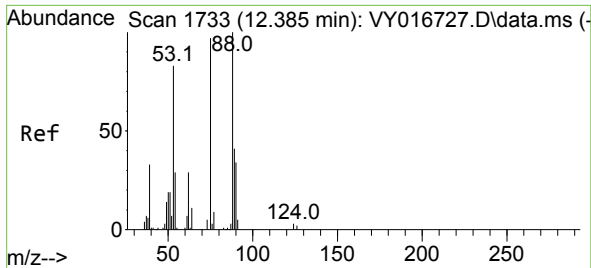


#76
 1,2,3-Trichloropropane
 Concen: 62.078 ug/l
 RT: 12.495 min Scan# 1751
 Delta R.T. -0.146 min
 Lab File: VY016858.D
 Acq: 26 Dec 2023 17:16



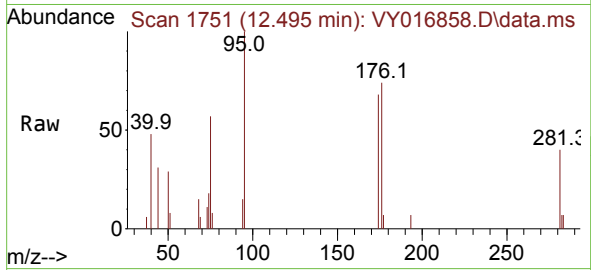
Tgt Ion: 75 Resp: 818
 Ion Ratio Lower Upper
 75 100
 77 0.0 0.0 0.0





#81
 trans-1,4-Dichloro-2-butene
 Concen: 145.787 ug/l
 RT: 12.495 min Scan# 11
 Delta R.T. 0.110 min
 Lab File: VY016858.D
 Acq: 26 Dec 2023 17:16

Instrument :
 MSVOA_Y
 ClientSampleId :



Tgt Ion: 75 Resp: 818

Ion	Ratio	Lower	Upper
75	100		
53	0.0	74.0	111.0#
89	0.0	36.5	54.7#

