

Data Path : Z:\voasrv\HPCHEM1\MSVOA_Y\Data\VY122623\
 Data File : VY016862.D
 Acq On : 26 Dec 2023 18:49
 Operator : SY/MD
 Sample : 05994-03
 Misc : 6.24g/5.0mL/MSVOA_Y/SOIL/A
 ALS Vial : 22 Sample Multiplier: 1

Instrument :
 MSVOA_Y
 ClientSampleId :
 WC-A-GRAB

Quant Time: Dec 27 01:38:18 2023
 Quant Method : Z:\voasrv\HPCHEM1\MSVOA_Y\methods\82Y122023S.M
 Quant Title : SW846 8260
 QLast Update : Thu Dec 21 01:49:45 2023
 Response via : Initial Calibration

Compound	R.T.	QIon	Response	Conc	Units	Dev(Min)

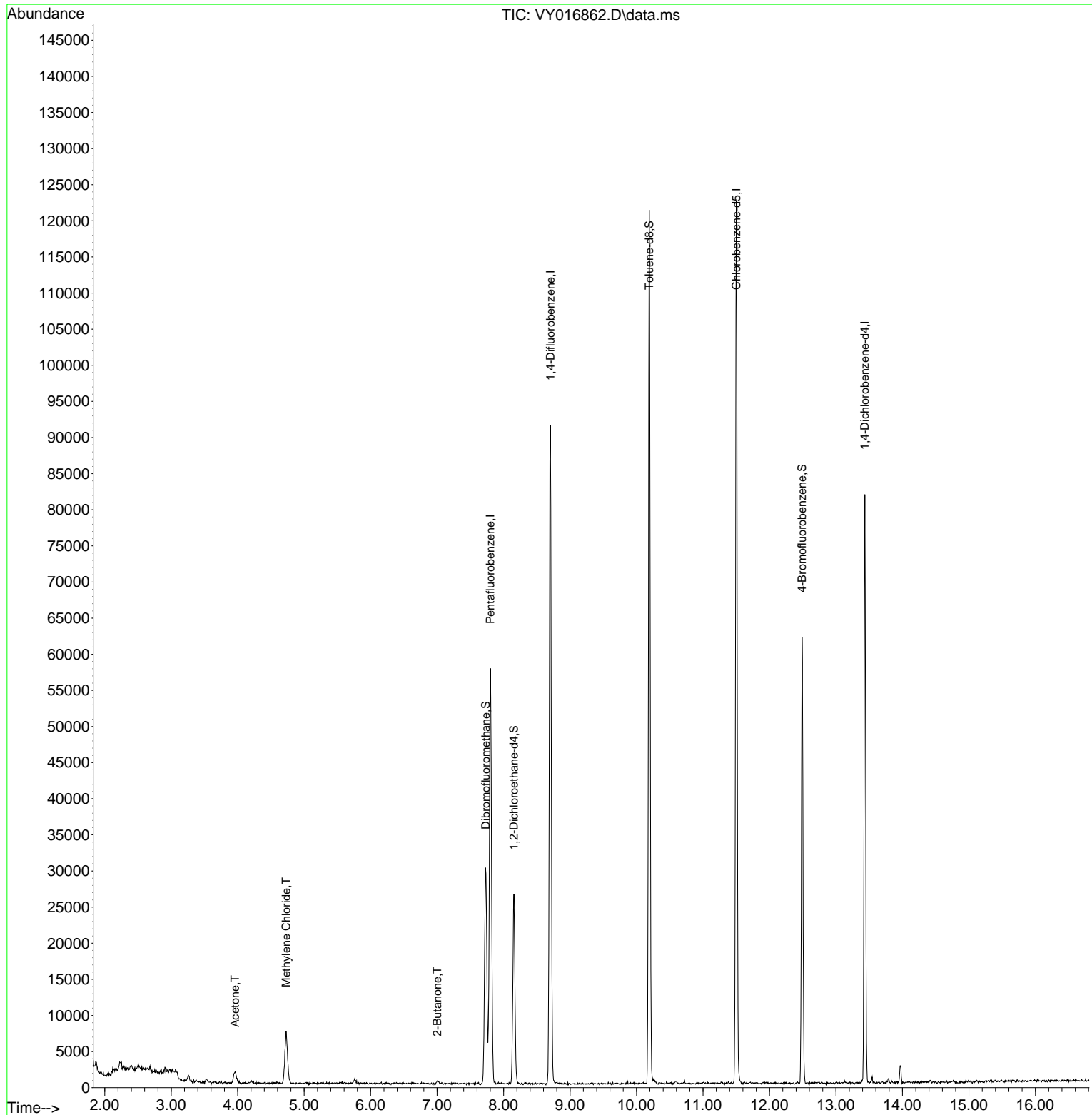
Internal Standards						
1) Pentafluorobenzene	7.801	168	43464	50.000	ug/l	0.00
34) 1,4-Difluorobenzene	8.703	114	77573	50.000	ug/l	0.00
63) Chlorobenzene-d5	11.502	117	67348	50.000	ug/l	0.00
72) 1,4-Dichlorobenzene-d4	13.434	152	20673	50.000	ug/l	0.00
System Monitoring Compounds						
33) 1,2-Dichloroethane-d4	8.155	65	20044	50.517	ug/l	0.00
Spiked Amount	50.000	Range	50 - 163	Recovery	=	101.040%
35) Dibromofluoromethane	7.734	113	22722	51.135	ug/l	0.00
Spiked Amount	50.000	Range	54 - 147	Recovery	=	102.260%
50) Toluene-d8	10.191	98	80164	50.044	ug/l	0.00
Spiked Amount	50.000	Range	58 - 134	Recovery	=	100.080%
62) 4-Bromofluorobenzene	12.489	95	18614	35.817	ug/l	0.00
Spiked Amount	50.000	Range	30 - 143	Recovery	=	71.640%
Target Compounds						
						Qvalue
16) Acetone	3.960	43	3143	29.293	ug/l	98
20) Methylene Chloride	4.729	84	5127	6.624	ug/l	93
25) 2-Butanone	7.003	43	678	4.590	ug/l #	87

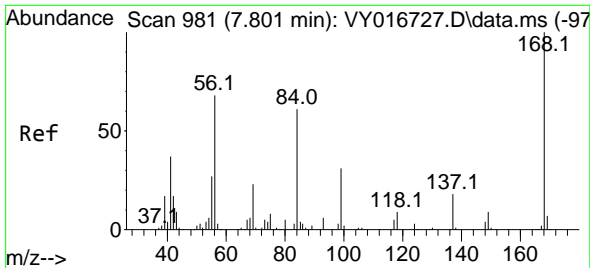
(#) = qualifier out of range (m) = manual integration (+) = signals summed

Data Path : Z:\voasrv\HPCHEM1\MSVOA_Y\Data\VY122623\
 Data File : VY016862.D
 Acq On : 26 Dec 2023 18:49
 Operator : SY/MD
 Sample : 05994-03
 Misc : 6.24g/5.0mL/MSVOA_Y/SOIL/A
 ALS Vial : 22 Sample Multiplier: 1

Instrument :
 MSVOA_Y
 ClientSampleId :
 WC-A-GRAB

Quant Time: Dec 27 01:38:18 2023
 Quant Method : Z:\voasrv\HPCHEM1\MSVOA_Y\methods\82Y122023S.M
 Quant Title : SW846 8260
 QLast Update : Thu Dec 21 01:49:45 2023
 Response via : Initial Calibration

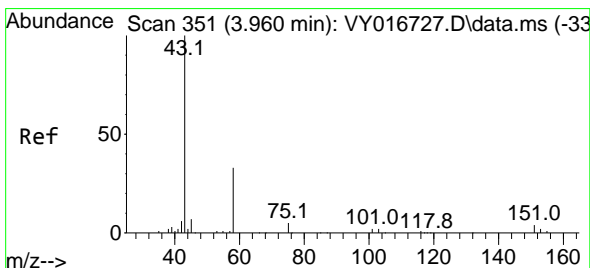
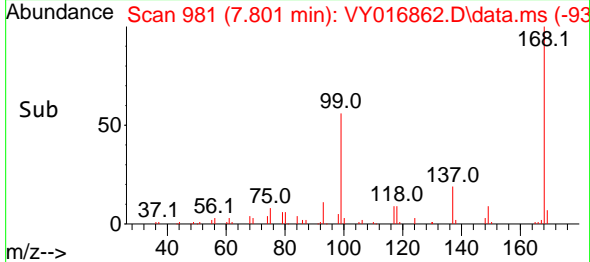
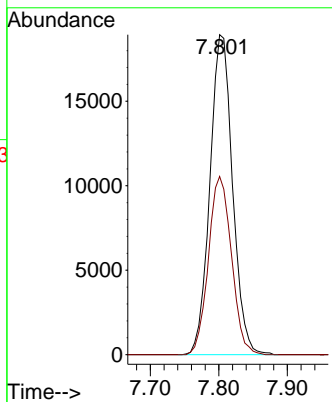
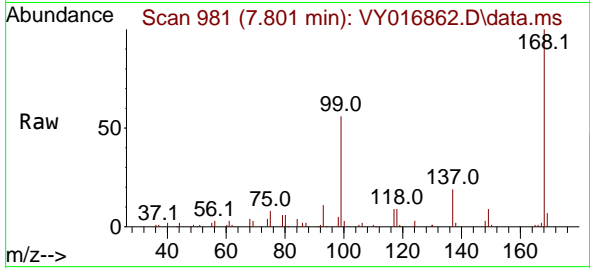




#1
 Pentafluorobenzene
 Concen: 50.000 ug/l
 RT: 7.801 min Scan# 981
 Delta R.T. 0.000 min
 Lab File: VY016862.D
 Acq: 26 Dec 2023 18:49

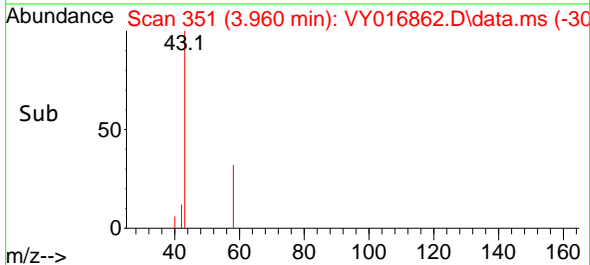
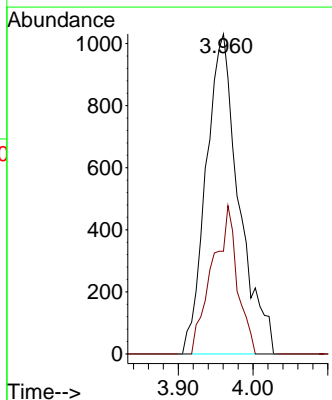
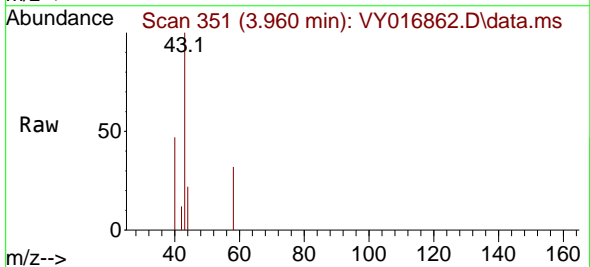
Instrument : MSVOA_Y
 ClientSampleId : WC-A-GRAB

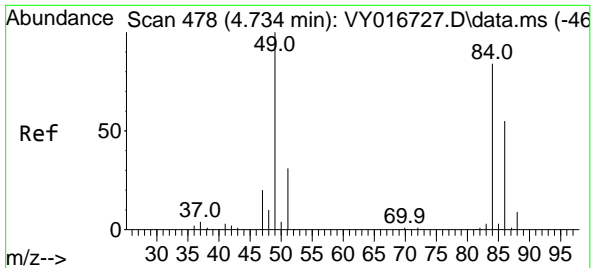
Tgt Ion:168 Resp: 43464
 Ion Ratio Lower Upper
 168 100
 99 55.7 44.2 66.4



#16
 Acetone
 Concen: 29.293 ug/l
 RT: 3.960 min Scan# 351
 Delta R.T. 0.000 min
 Lab File: VY016862.D
 Acq: 26 Dec 2023 18:49

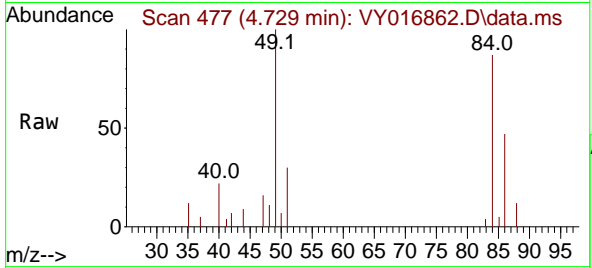
Tgt Ion: 43 Resp: 3143
 Ion Ratio Lower Upper
 43 100
 58 32.1 26.6 39.8





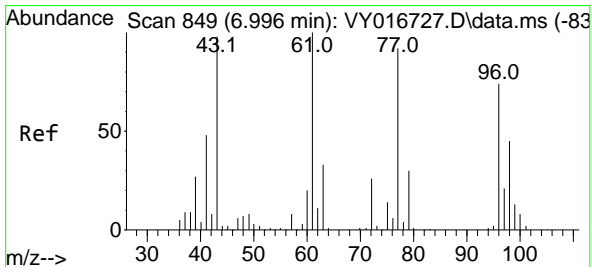
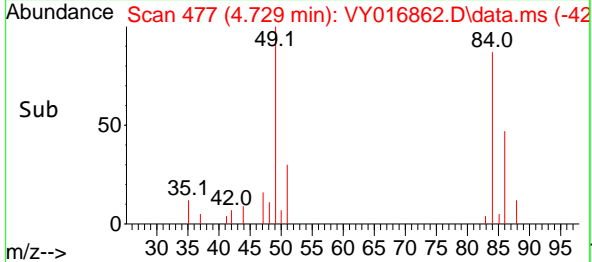
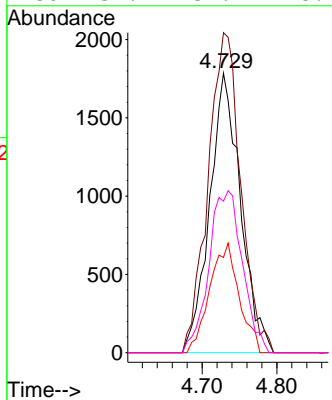
#20
 Methylene Chloride
 Concen: 6.624 ug/l
 RT: 4.729 min Scan# 41
 Delta R.T. -0.005 min
 Lab File: VY016862.D
 Acq: 26 Dec 2023 18:49

Instrument : MSVOA_Y
 ClientSampleId : WC-A-GRAB



Tgt Ion: 84 Resp: 5127

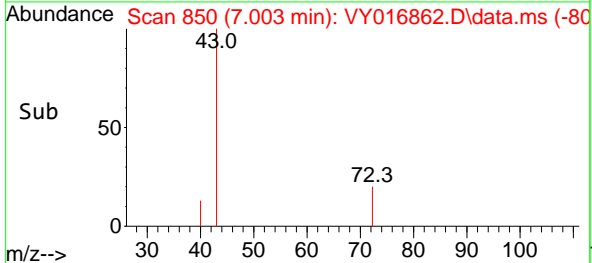
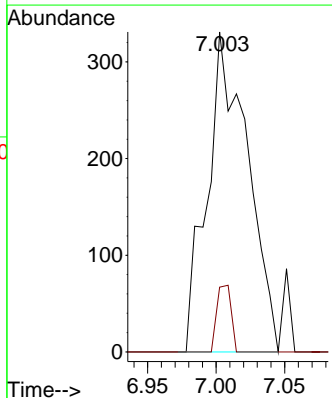
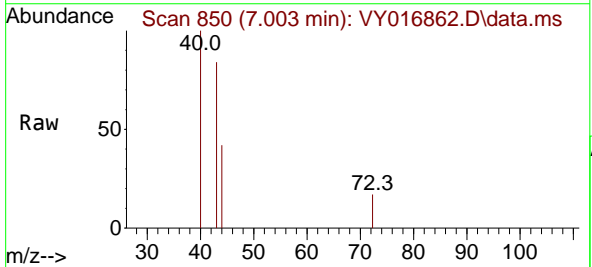
Ion	Ratio	Lower	Upper
84	100		
49	114.4	95.2	142.8
51	34.0	29.9	44.9
86	54.2	52.2	78.4

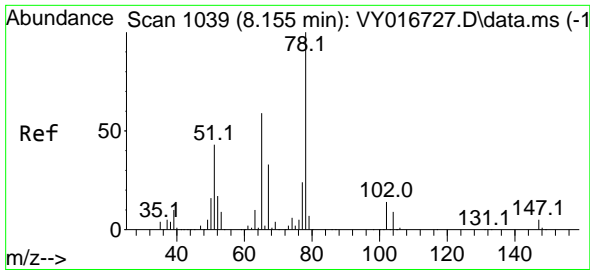


#25
 2-Butanone
 Concen: 4.590 ug/l
 RT: 7.003 min Scan# 850
 Delta R.T. 0.007 min
 Lab File: VY016862.D
 Acq: 26 Dec 2023 18:49

Tgt Ion: 43 Resp: 678

Ion	Ratio	Lower	Upper
43	100		
72	20.2	21.4	32.2#

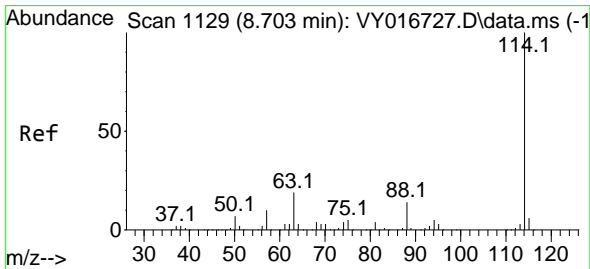
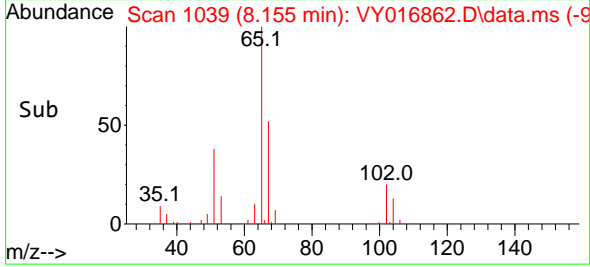
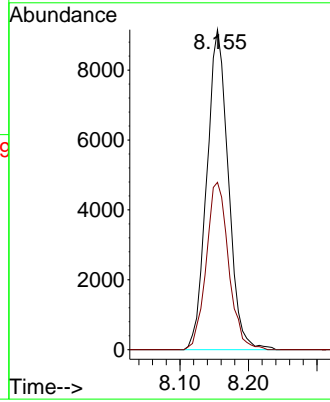
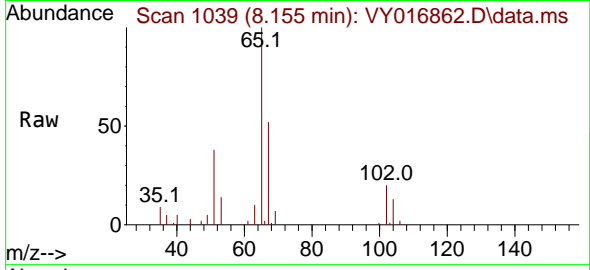




#33
 1,2-Dichloroethane-d4
 Concen: 50.517 ug/l
 RT: 8.155 min Scan# 1039
 Delta R.T. 0.000 min
 Lab File: VY016862.D
 Acq: 26 Dec 2023 18:49

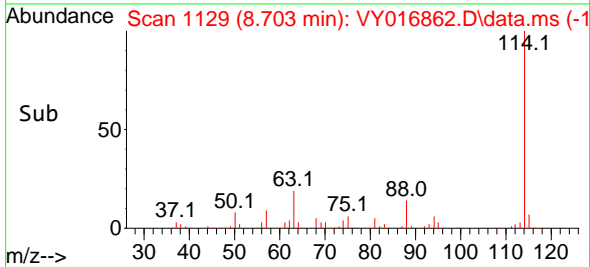
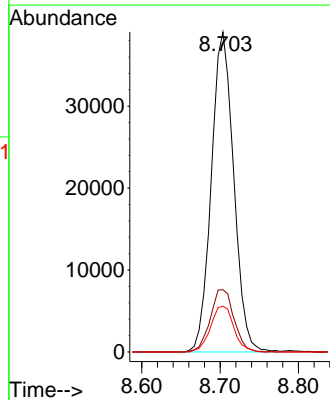
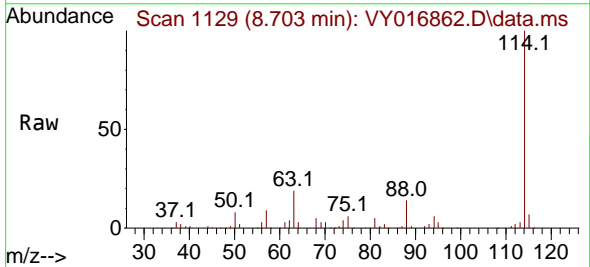
Instrument : MSVOA_Y
 ClientSampleId : WC-A-GRAB

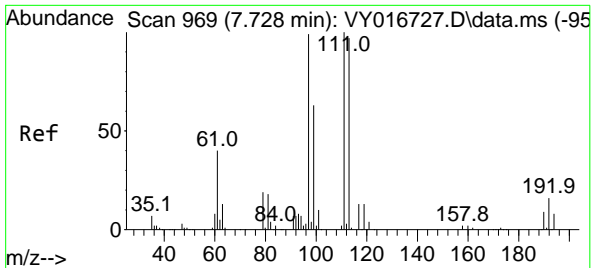
Tgt Ion: 65 Resp: 20044
 Ion Ratio Lower Upper
 65 100
 67 54.3 0.0 109.0



#34
 1,4-Difluorobenzene
 Concen: 50.000 ug/l
 RT: 8.703 min Scan# 1129
 Delta R.T. 0.000 min
 Lab File: VY016862.D
 Acq: 26 Dec 2023 18:49

Tgt Ion: 114 Resp: 77573
 Ion Ratio Lower Upper
 114 100
 63 19.5 0.0 37.4
 88 14.3 0.0 29.0



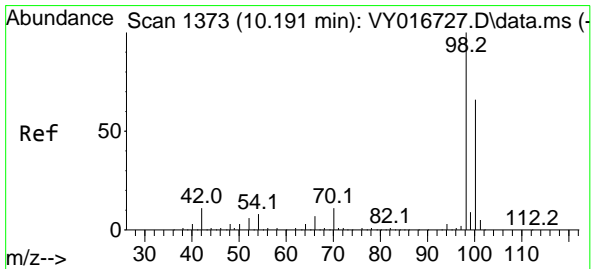
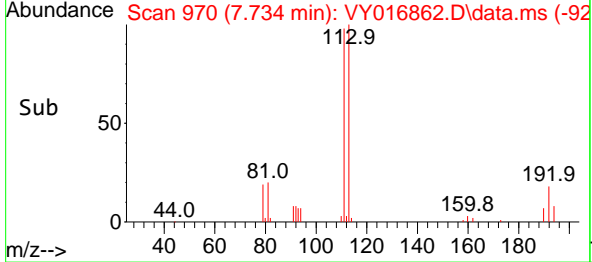
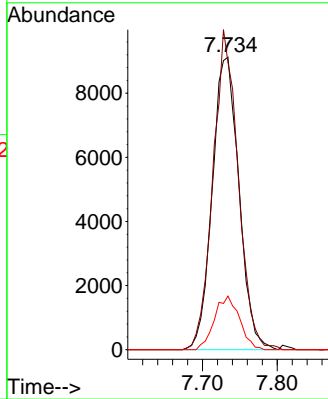
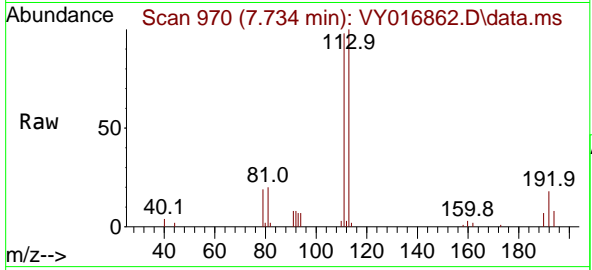


#35
 Dibromofluoromethane
 Concen: 51.135 ug/l
 RT: 7.734 min Scan# 91
 Delta R.T. 0.006 min
 Lab File: VY016862.D
 Acq: 26 Dec 2023 18:49

Instrument :
 MSVOA_Y
 ClientSampleId :
 WC-A-GRAB

Tgt Ion: 113 Resp: 22722

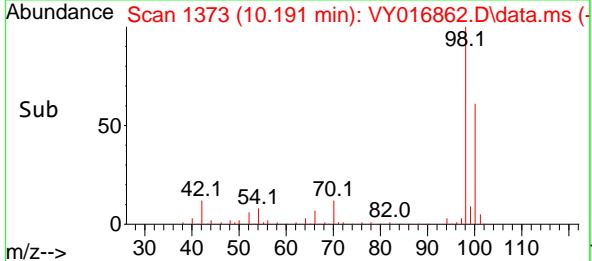
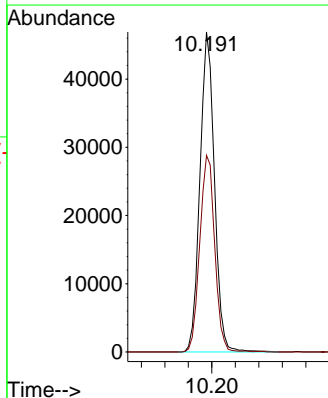
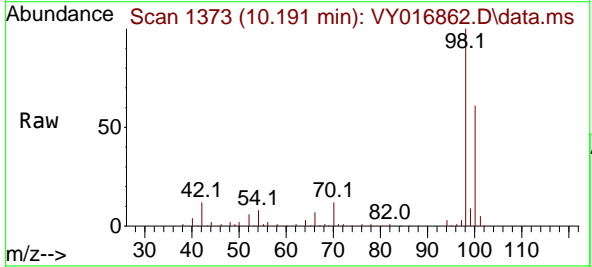
Ion	Ratio	Lower	Upper
113	100		
111	102.7	83.8	125.6
192	17.1	14.5	21.7

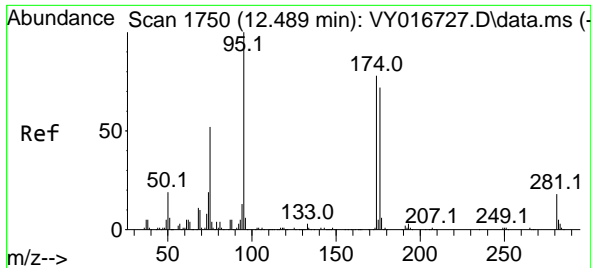


#50
 Toluene-d8
 Concen: 50.044 ug/l
 RT: 10.191 min Scan# 1373
 Delta R.T. 0.000 min
 Lab File: VY016862.D
 Acq: 26 Dec 2023 18:49

Tgt Ion: 98 Resp: 80164

Ion	Ratio	Lower	Upper
98	100		
100	63.3	52.3	78.5

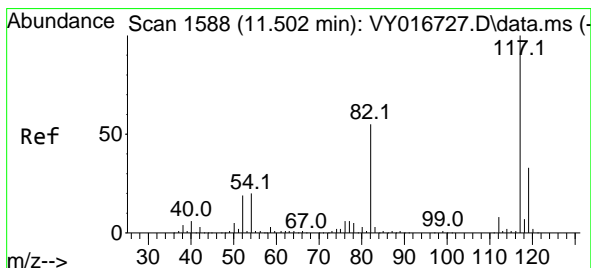
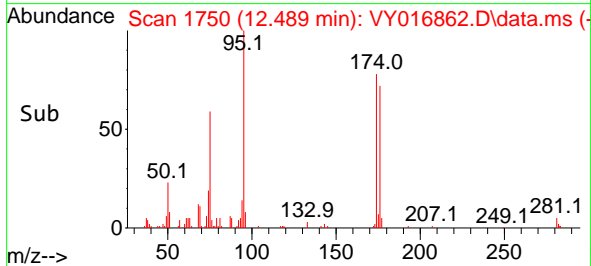
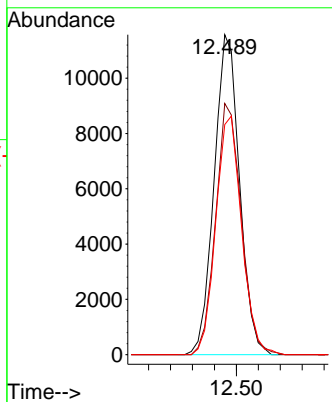
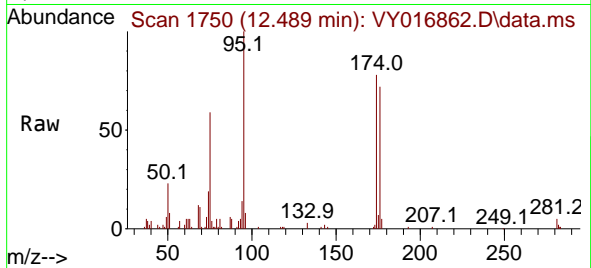




#62
 4-Bromofluorobenzene
 Concen: 35.817 ug/l
 RT: 12.489 min Scan# 1750
 Delta R.T. 0.000 min
 Lab File: VY016862.D
 Acq: 26 Dec 2023 18:49

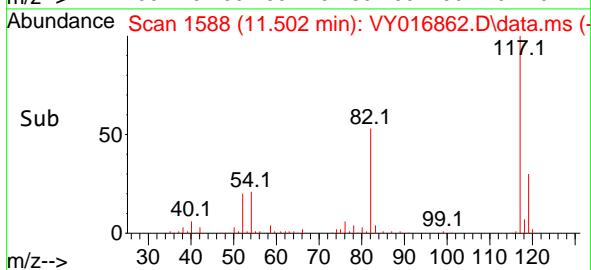
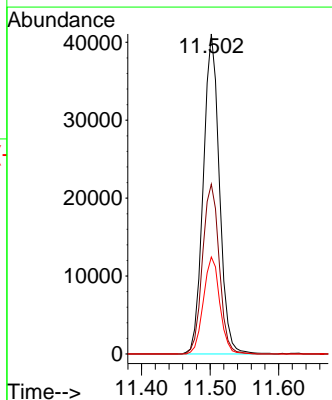
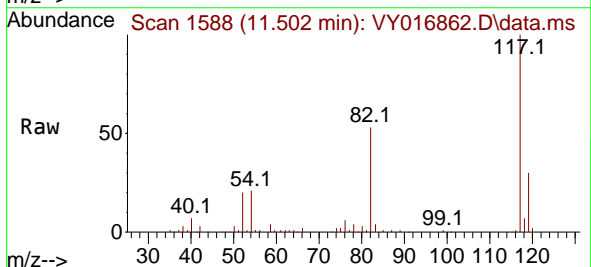
Instrument : MSVOA_Y
 ClientSampleId : WC-A-GRAB

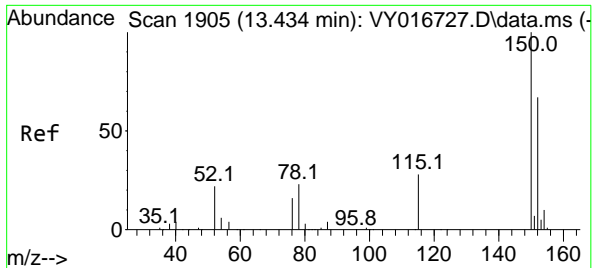
Tgt Ion	Resp	Lower	Upper
95	18614	100	
174	79.5	0.0	160.0
176	75.9	0.0	151.8



#63
 Chlorobenzene-d5
 Concen: 50.000 ug/l
 RT: 11.502 min Scan# 1588
 Delta R.T. 0.000 min
 Lab File: VY016862.D
 Acq: 26 Dec 2023 18:49

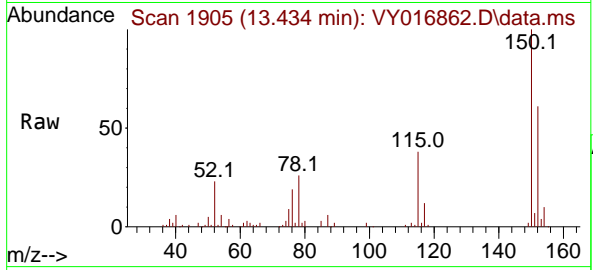
Tgt Ion	Resp	Lower	Upper
117	67348	100	
82	53.0	43.8	65.8
119	30.3	26.5	39.7





#72
 1,4-Dichlorobenzene-d4
 Concen: 50.000 ug/l
 RT: 13.434 min Scan# 1905
 Delta R.T. 0.000 min
 Lab File: VY016862.D
 Acq: 26 Dec 2023 18:49

Instrument : MSVOA_Y
 ClientSampleId : WC-A-GRAB



Tgt Ion:152 Resp: 20673

Ion	Ratio	Lower	Upper
152	100		
115	60.4	30.0	90.0
150	158.6	0.0	344.6

