

Data Path : Z:\VOASRV\HPCHEM1\MSVOA D\DATA\VD010220\
 Data File : VD064714.D
 Acq On : 02 Jan 2020 13:36
 Operator : VA/SY
 Sample : K6464-01
 Misc : 6.01G/5.00ml/MSVOA D/SOIL
 ALS Vial : 7 Sample Multiplier: 1

Instrument :
 MSVOA_D
 ClientSampleId :
 SB-4-(5-6)

Quant Time: Jan 03 00:24:15 2020
 Quant Method : Z:\VOASRV\HPCHEM1\MSVOA_D\METHOD\82D122419S.M
 Quant Title : SW846 8260
 QLast Update : Tue Dec 24 13:19:06 2019
 Response via : Initial Calibration

Internal Standards	R.T.	QIon	Response	Conc	Units	Dev(Min)
1) Pentafluorobenzene	7.98	168	501715	50.00	ug/l	0.00
34) 1,4-Difluorobenzene	8.87	114	765879	50.00	ug/l	0.00
63) Chlorobenzene-d5	11.65	117	662796	50.00	ug/l	0.00
72) 1,4-Dichlorobenzene-d4	13.58	152	292584	50.00	ug/l	0.00

System Monitoring Compounds

33) 1,2-Dichloroethane-d4	8.33	65	236839	53.53	ug/l	0.00
Spiked Amount				50.000		
				Recovery	=	107.06%
35) Dibromofluoromethane	7.91	113	240839	51.26	ug/l	0.00
Spiked Amount				50.000		
				Recovery	=	102.52%
50) Toluene-d8	10.34	98	906569	50.38	ug/l	0.00
Spiked Amount				50.000		
				Recovery	=	100.76%
62) 4-Bromofluorobenzene	12.64	95	275905	48.49	ug/l	0.00
Spiked Amount				50.000		
				Recovery	=	96.98%

Target Compounds

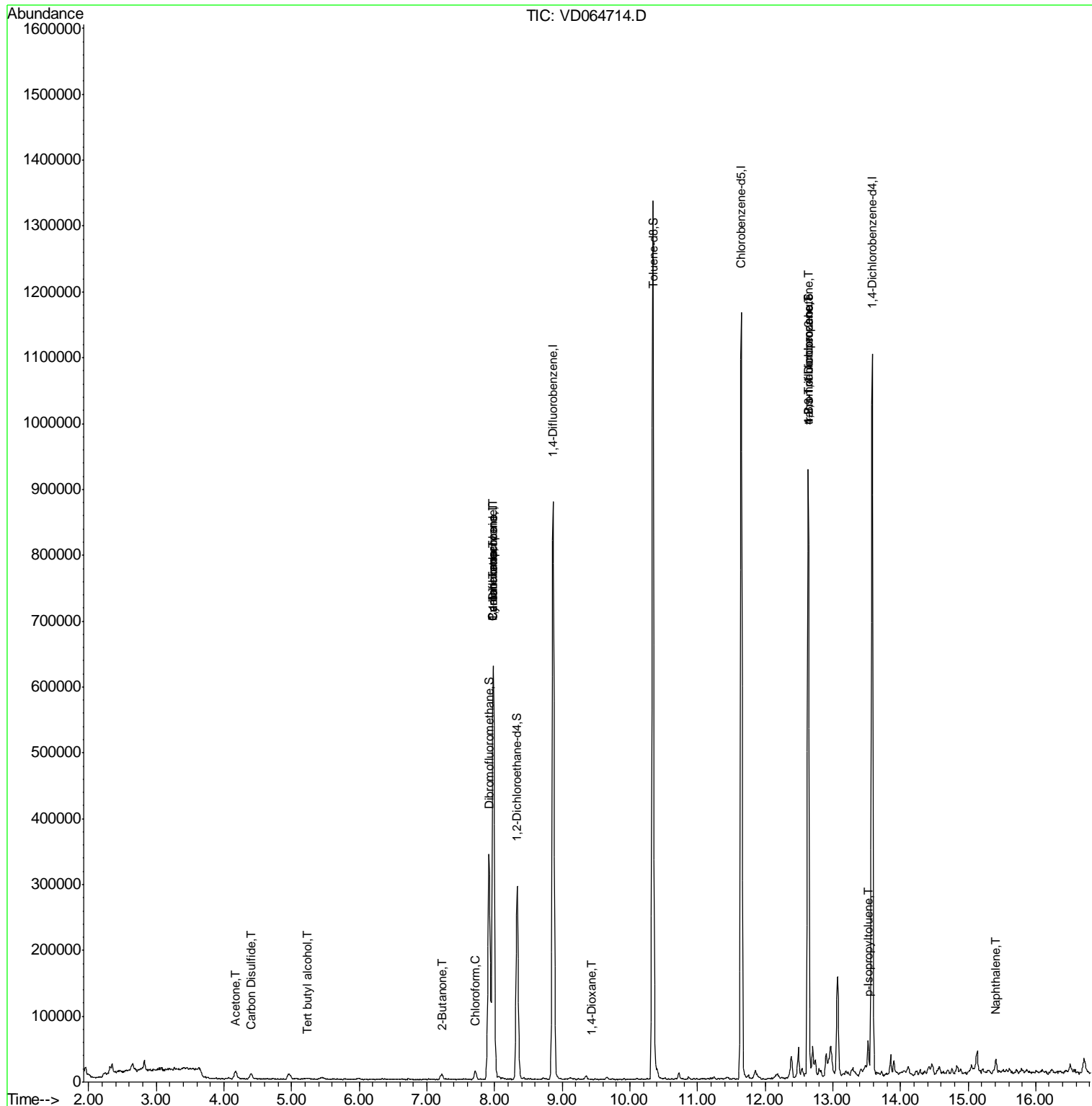
						Qvalue
11) Tert butyl alcohol	5.24	59	1128	4.449	ug/l	100
16) Acetone	4.17	43	21213	24.351	ug/l	98
17) Carbon Disulfide	4.40	76	16336	1.145	ug/l #	93
20) Methylene Chloride	4.94	84	2439	Below Cal	#	64
25) 2-Butanone	7.23	43	2130	1.752	ug/l #	89
30) Chloroform	7.71	83	11912	1.378	ug/l	99
31) Cyclohexane	7.98	56	11229	1.361	ug/l #	10
36) 1,1-Dichloropropene	7.98	75	37069	5.029	ug/l #	50
38) Carbon Tetrachloride	7.98	117	46760	5.949	ug/l #	17
49) 1,4-Dioxane	9.43	88	56	1.813	ug/l #	1
76) 1,2,3-Trichloropropane	12.64	75	144091	62.366	ug/l #	100
81) trans-1,4-Dichloro-2-buten	12.64	75	144091	130.436	ug/l #	10
86) p-Isopropyltoluene	13.53	119	24540	1.255	ug/l	96
95) Naphthalene	15.41	128	16910	1.738	ug/l #	95

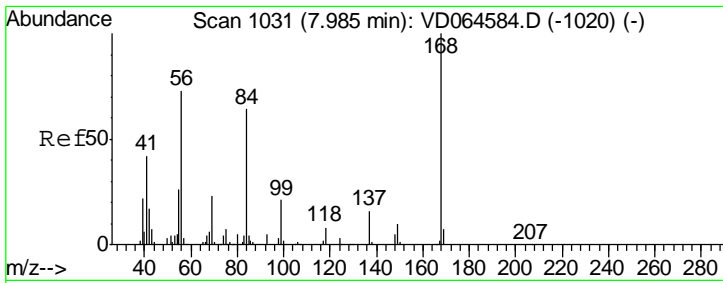
(#) = qualifier out of range (m) = manual integration (+) = signals summed

Data Path : Z:\VOASRV\HPCHEM1\MSVOA D\DATA\VD010220\
 Data File : VD064714.D
 Acq On : 02 Jan 2020 13:36
 Operator : VA/SY
 Sample : K6464-01
 Misc : 6.01G/5.00ml/MSVOA D/SOIL
 ALS Vial : 7 Sample Multiplier: 1

Instrument :
 MSVOA_D
 Client Sampled :
 SB-4-(5-6)

Quant Time: Jan 03 00:24:15 2020
 Quant Method : Z:\VOASRV\HPCHEM1\MSVOA_D\METHOD\82D122419S.M
 Quant Title : SW846 8260
 QLast Update : Tue Dec 24 13:19:06 2019
 Response via : Initial Calibration

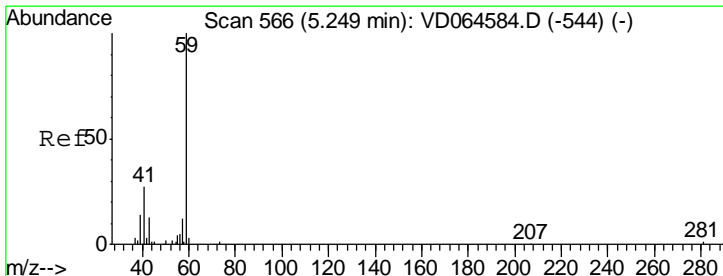
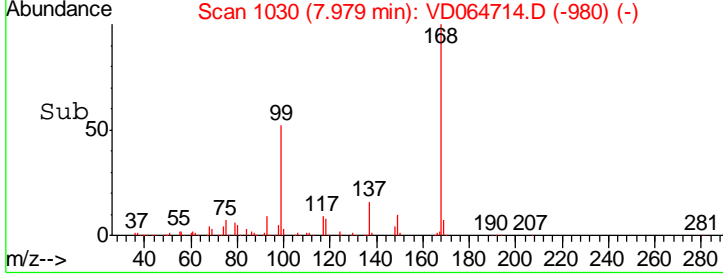
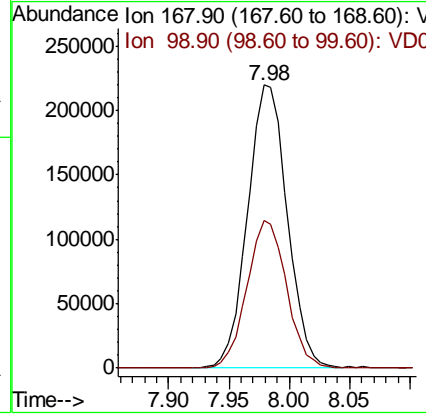
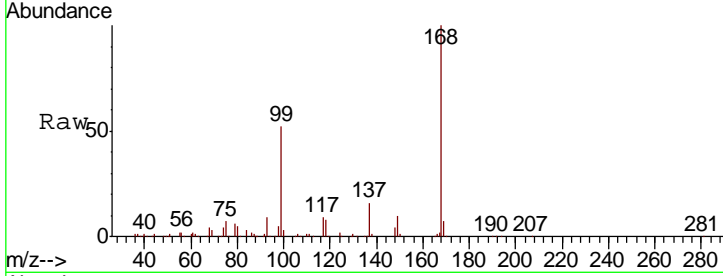




#1
 Pentafluorobenzene
 Concen: 50.000 ug/l
 RT: 7.98 min Scan# 1030
 Delta R.T. -0.01 min
 Lab File: VD064714.D
 Acq: 02 Jan 2020 13:36

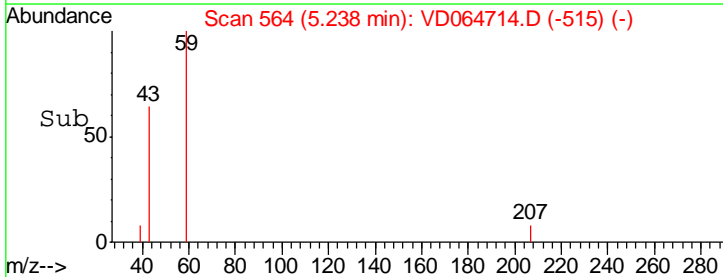
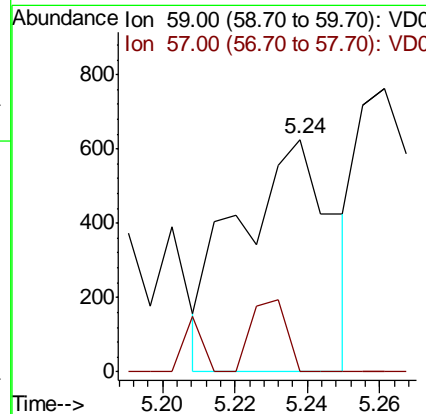
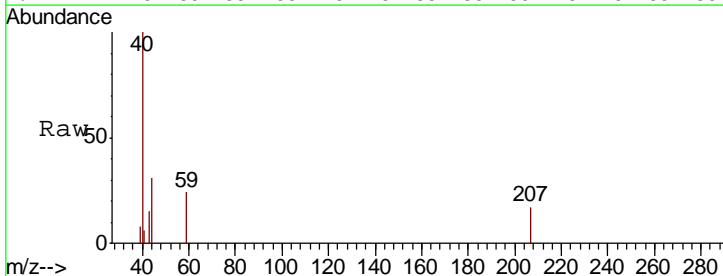
Instrument : MSVOA_D
 ClientSampled : SB-4-(5-6)

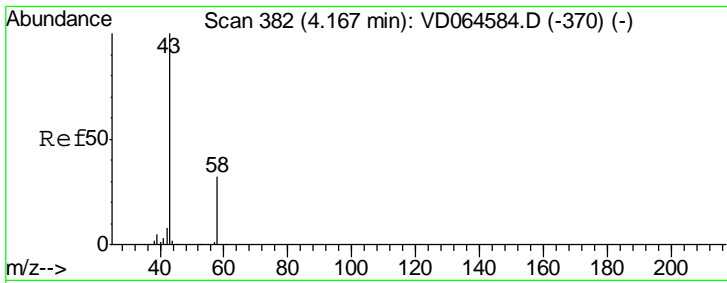
Tgt Ion	Resp	Lower	Upper
168	100		
99	52.2	41.8	62.6



#11
 Tert butyl alcohol
 Concen: 4.449 ug/l
 RT: 5.24 min Scan# 564
 Delta R.T. -0.01 min
 Lab File: VD064714.D
 Acq: 02 Jan 2020 13:36

Tgt Ion	Resp	Lower	Upper
59	100		
57	11.5	9.3	13.9

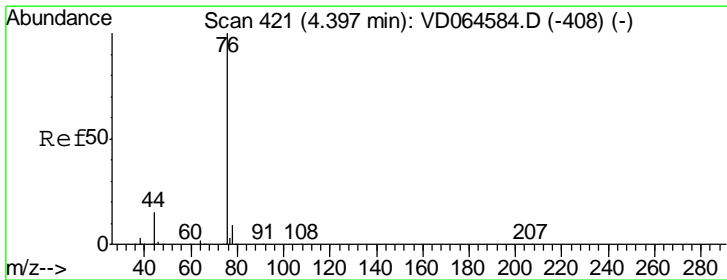
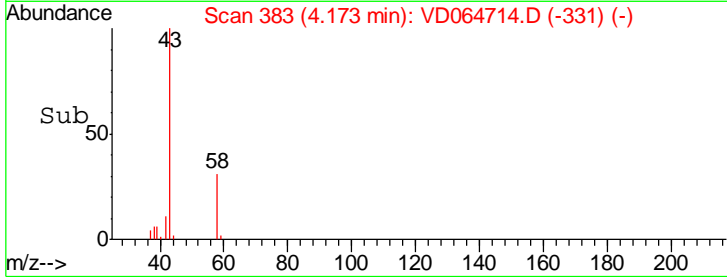
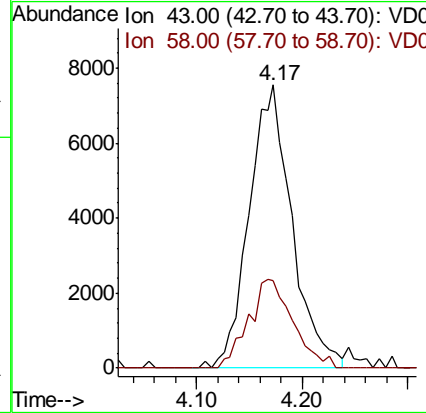
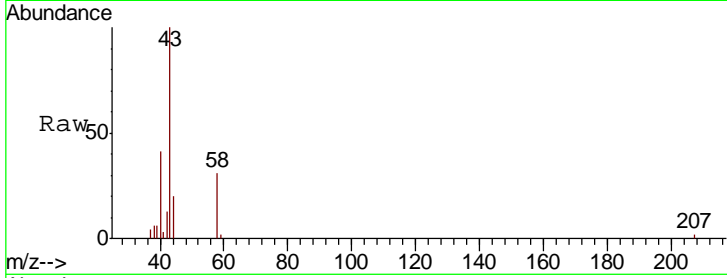




#16
 Acetone
 Concen: 24.351 ug/l
 RT: 4.17 min Scan# 383
 Delta R.T. 0.01 min
 Lab File: VD064714.D
 Acq: 02 Jan 2020 13:36

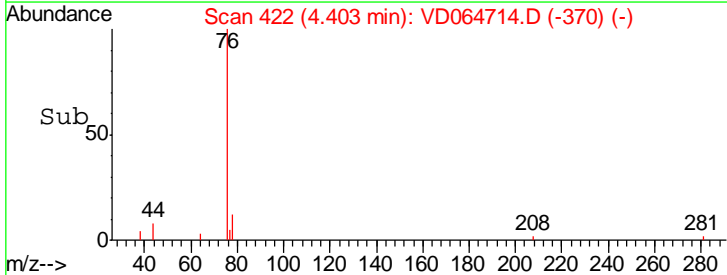
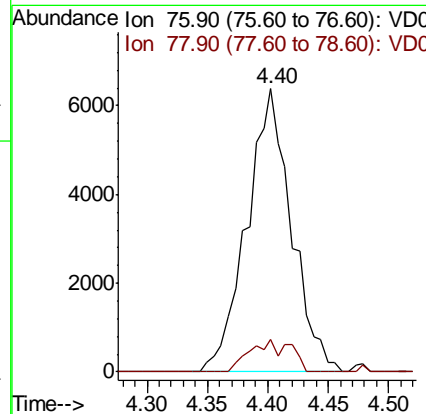
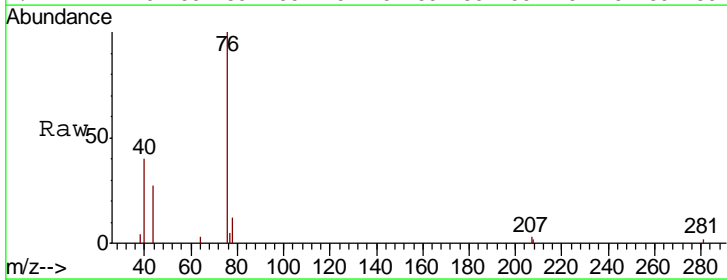
Instrument :
 MSVOA_D
 ClientSampled :
 SB-4-(5-6)

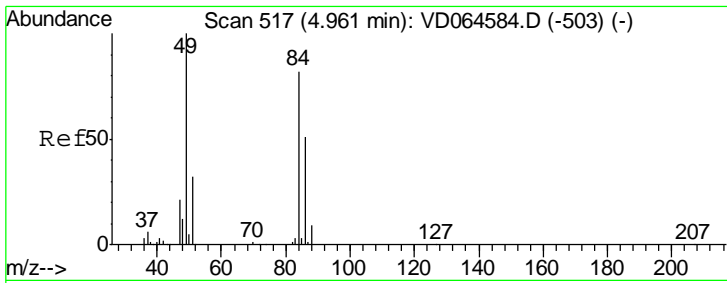
Tgt Ion: 43 Resp: 21213
 Ion Ratio Lower Upper
 43 100
 58 31.1 25.8 38.6



#17
 Carbon Disulfide
 Concen: 1.145 ug/l
 RT: 4.40 min Scan# 422
 Delta R.T. 0.01 min
 Lab File: VD064714.D
 Acq: 02 Jan 2020 13:36

Tgt Ion: 76 Resp: 16336
 Ion Ratio Lower Upper
 76 100
 78 11.5 7.3 10.9#

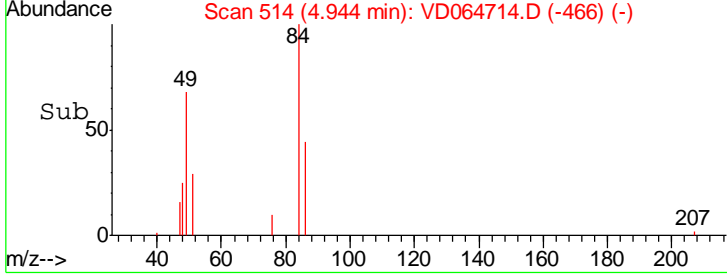
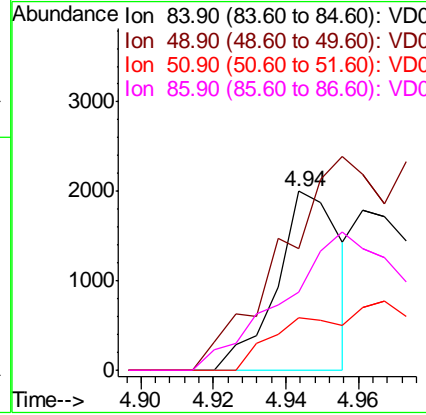
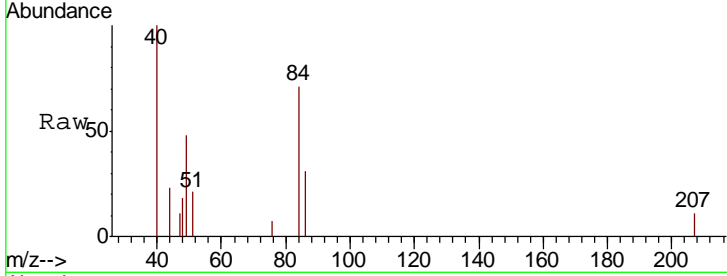




#20
 Methylene Chloride
 Concen: Below Cal
 RT: 4.94 min Scan# 514
 Delta R.T. -0.02 min
 Lab File: VD064714.D
 Acq: 02 Jan 2020 13:36

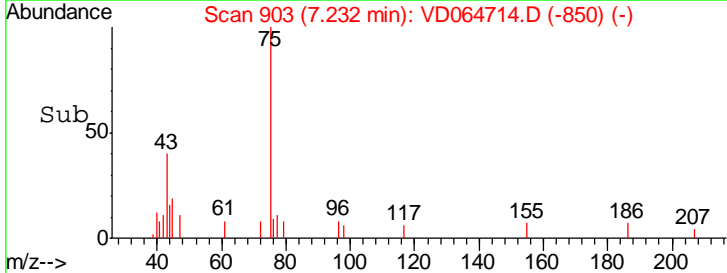
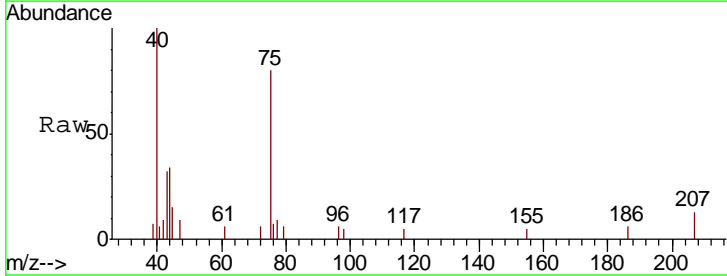
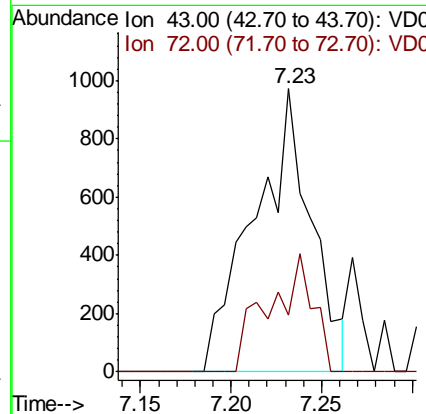
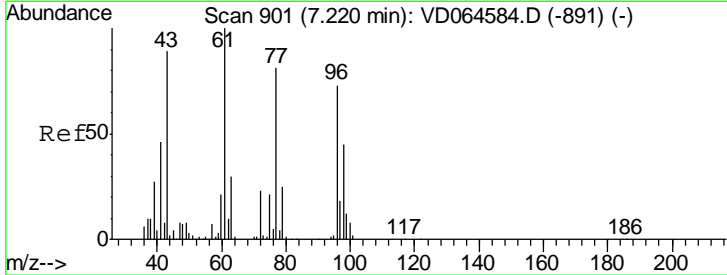
Instrument :
 MSVOA_D
 ClientSampled :
 SB-4-(5-6)

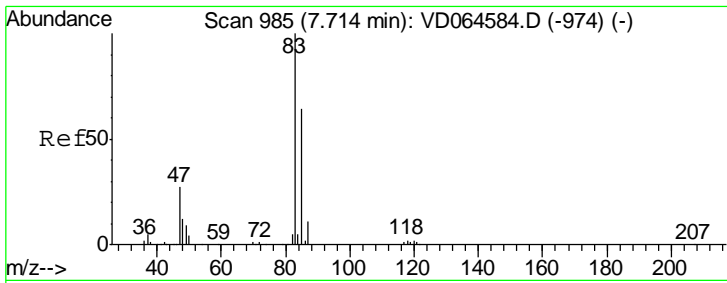
Tgt Ion	Resp	Lower	Upper
84	100		
49	67.8	97.2	145.8#
51	29.4	31.4	47.0#
86	43.6	49.3	73.9#



#25
 2-Butanone
 Concen: 1.752 ug/l
 RT: 7.23 min Scan# 903
 Delta R.T. 0.01 min
 Lab File: VD064714.D
 Acq: 02 Jan 2020 13:36

Tgt Ion	Resp	Lower	Upper
43	100		
72	20.1	20.7	31.1#

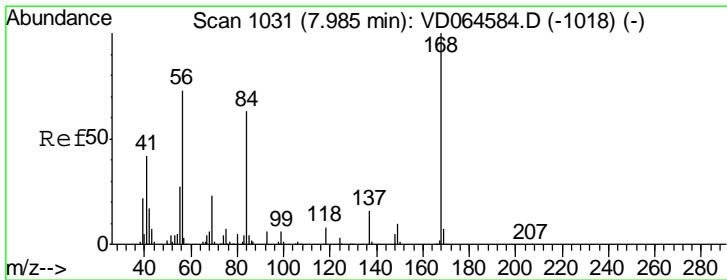
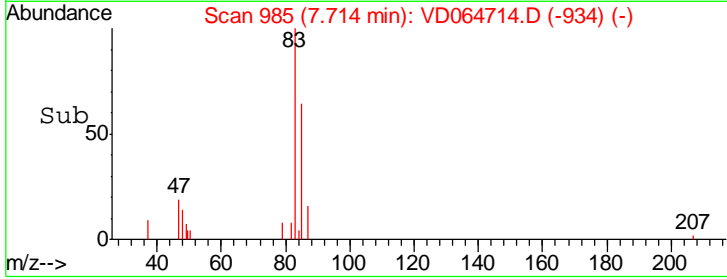
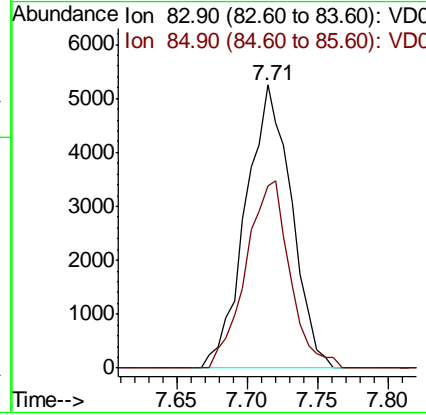
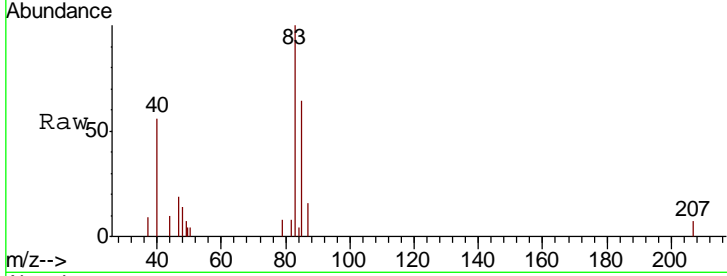




#30
 Chloroform
 Concen: 1.378 ug/l
 RT: 7.71 min Scan# 985
 Delta R.T. 0.00 min
 Lab File: VD064714.D
 Acq: 02 Jan 2020 13:36

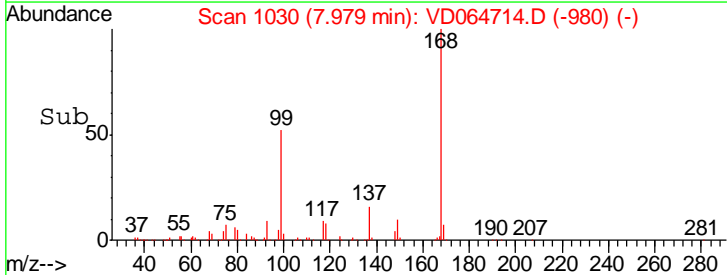
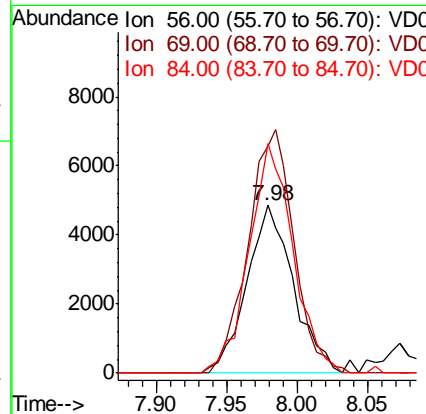
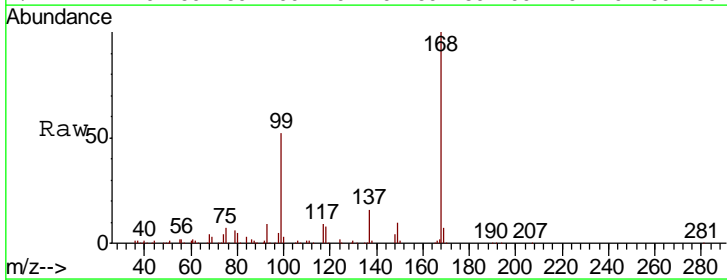
Instrument :
 MSVOA_D
 ClientSampled :
 SB-4-(5-6)

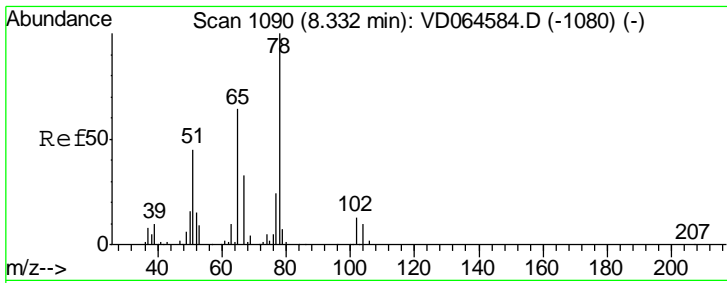
Tgt Ion: 83 Resp: 11912
 Ion Ratio Lower Upper
 83 100
 85 64.4 51.1 76.7



#31
 Cyclohexane
 Concen: 1.361 ug/l
 RT: 7.98 min Scan# 1030
 Delta R.T. -0.01 min
 Lab File: VD064714.D
 Acq: 02 Jan 2020 13:36

Tgt Ion: 56 Resp: 11229
 Ion Ratio Lower Upper
 56 100
 69 135.1 24.7 37.1#
 84 136.9 69.4 104.2#

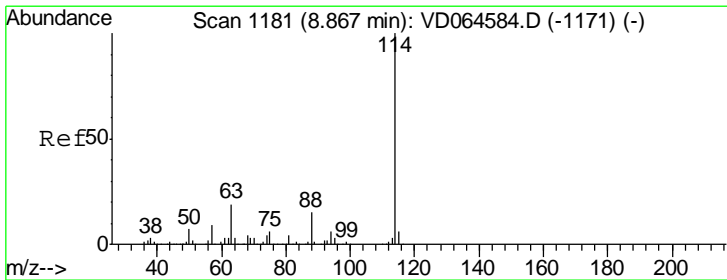
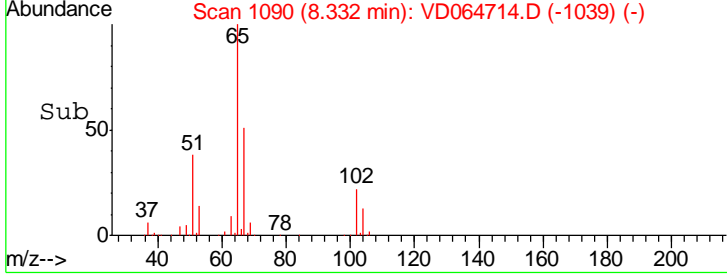
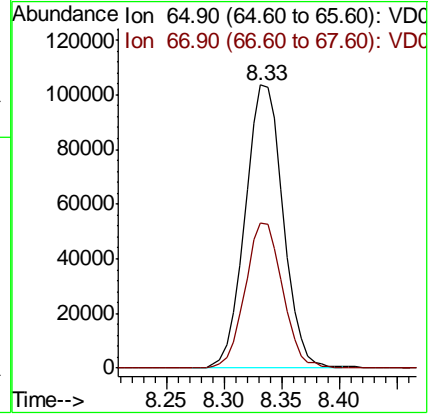
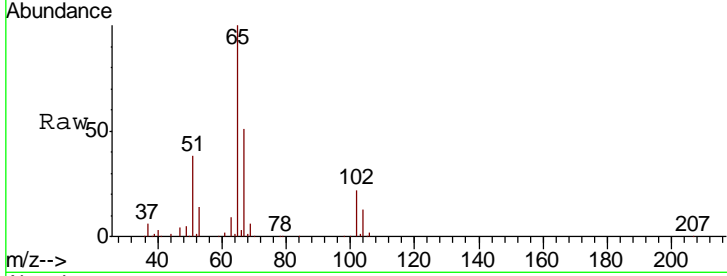




#33
 1,2-Dichloroethane-d4
 Concen: 53.534 ug/l
 RT: 8.33 min Scan# 1090
 Delta R.T. 0.00 min
 Lab File: VD064714.D
 Acq: 02 Jan 2020 13:36

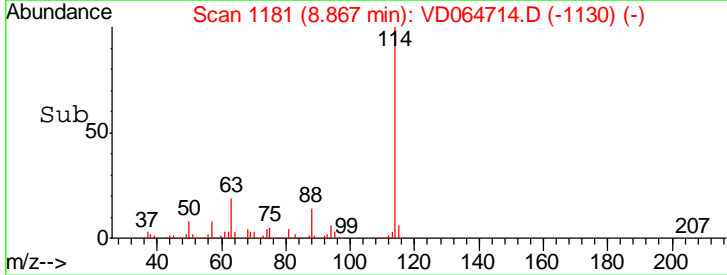
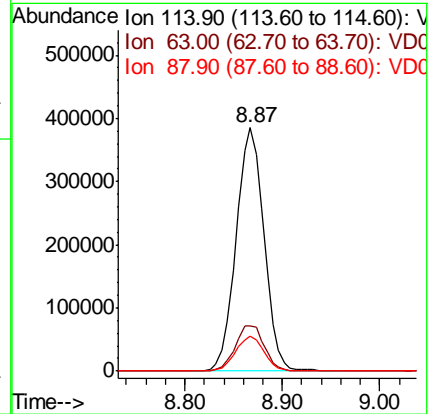
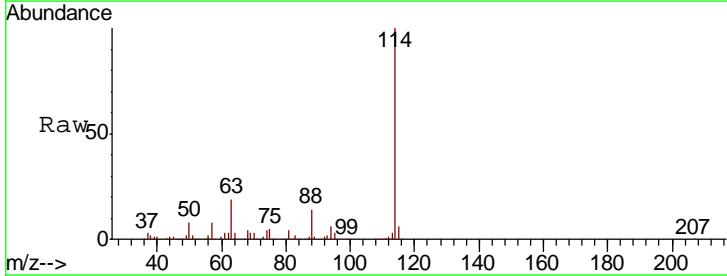
Instrument :
 MSVOA_D
 ClientSampled :
 SB-4-(5-6)

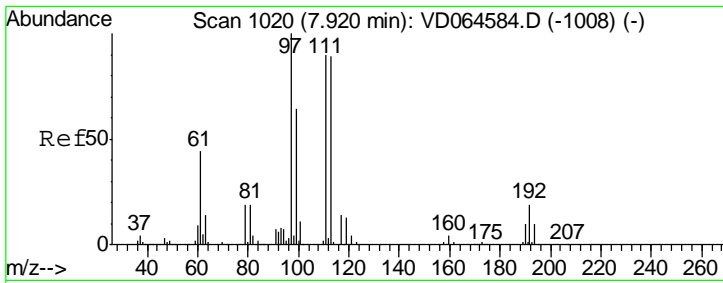
Tgt Ion: 65 Resp: 236839
 Ion Ratio Lower Upper
 65 100
 67 50.5 0.0 106.2



#34
 1,4-Difluorobenzene
 Concen: 50.000 ug/l
 RT: 8.87 min Scan# 1181
 Delta R.T. 0.00 min
 Lab File: VD064714.D
 Acq: 02 Jan 2020 13:36

Tgt Ion: 114 Resp: 765879
 Ion Ratio Lower Upper
 114 100
 63 18.7 0.0 38.0
 88 14.2 0.0 29.2

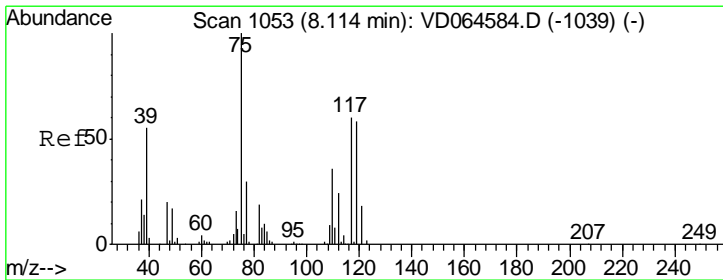
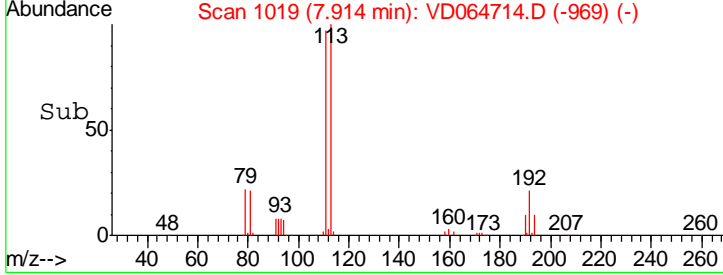
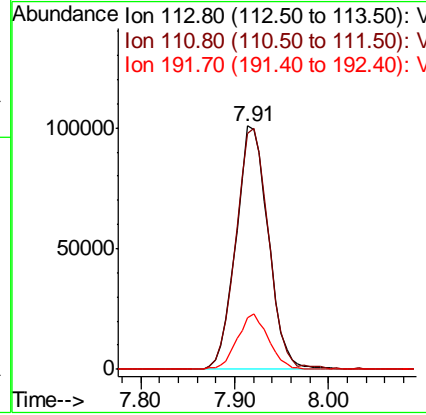
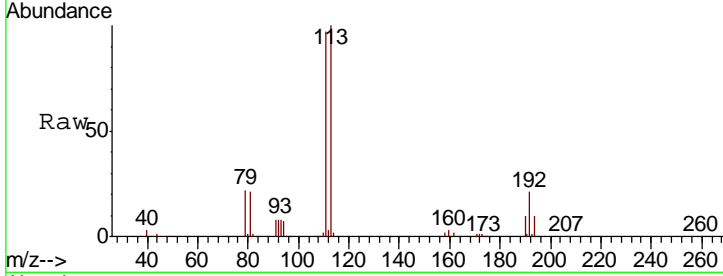




#35
 Dibromofluoromethane
 Concen: 51.255 ug/l
 RT: 7.91 min Scan# 1019
 Delta R.T. -0.01 min
 Lab File: VD064714.D
 Acq: 02 Jan 2020 13:36

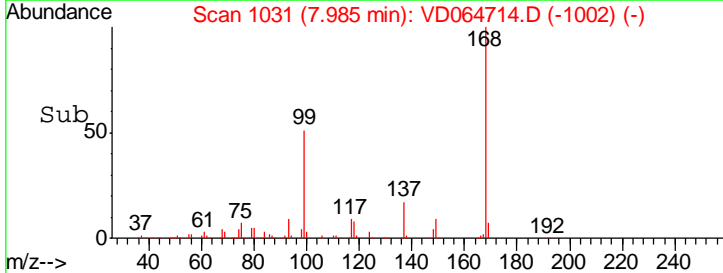
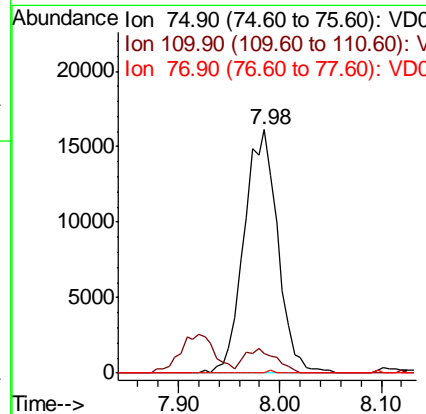
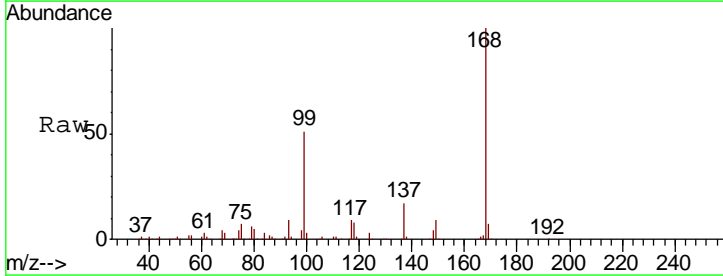
Instrument :
 MSVOA_D
 ClientSampled :
 SB-4-(5-6)

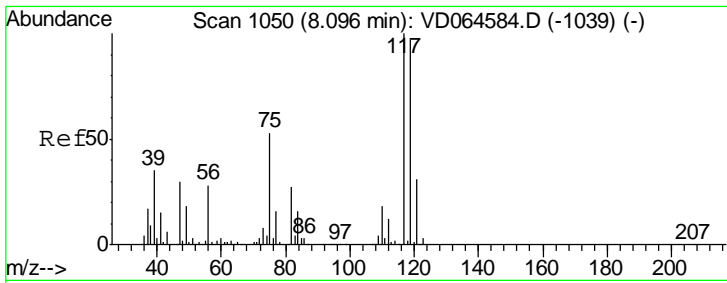
Tgt Ion	Resp	Lower	Upper
113	240839		
111	100.2	80.6	121.0
192	21.9	17.9	26.9



#36
 1,1-Dichloropropene
 Concen: 5.029 ug/l
 RT: 7.98 min Scan# 1031
 Delta R.T. -0.13 min
 Lab File: VD064714.D
 Acq: 02 Jan 2020 13:36

Tgt Ion	Resp	Lower	Upper
75	37069		
110	9.5	18.1	54.1#
77	0.2	24.2	36.4#

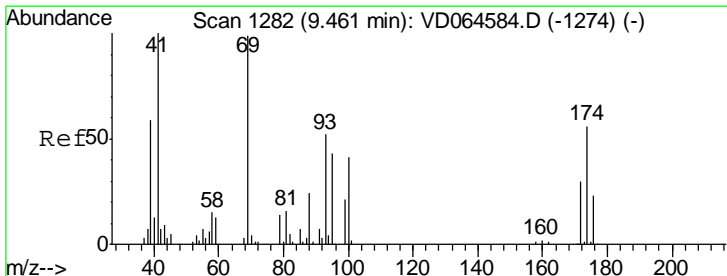
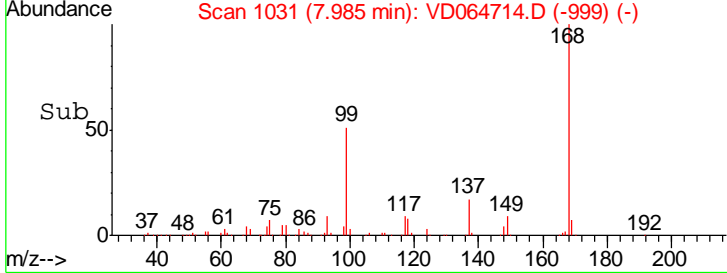
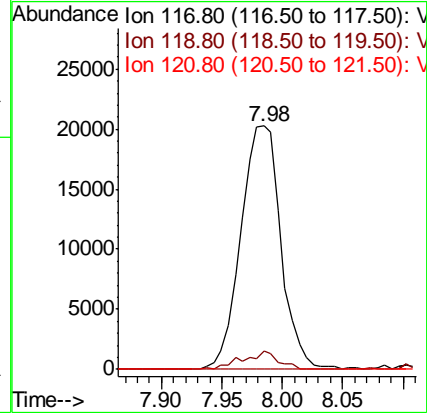
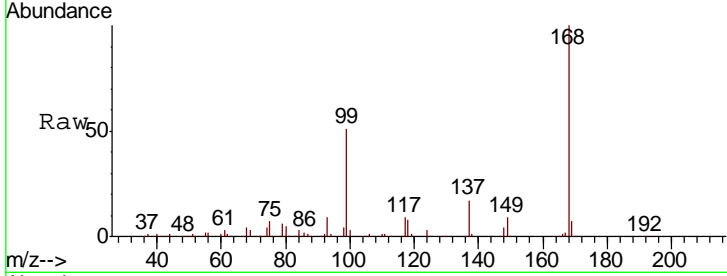




#38
 Carbon Tetrachloride
 Concen: 5.949 ug/l
 RT: 7.98 min Scan# 1031
 Delta R.T. -0.11 min
 Lab File: VD064714.D
 Acq: 02 Jan 2020 13:36

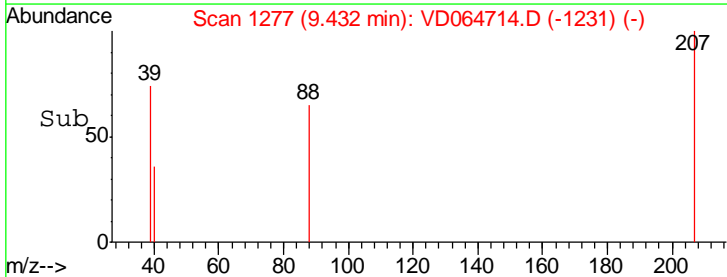
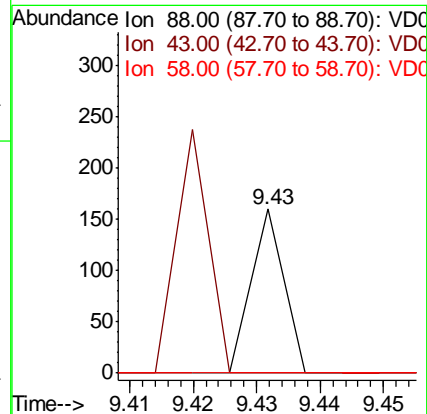
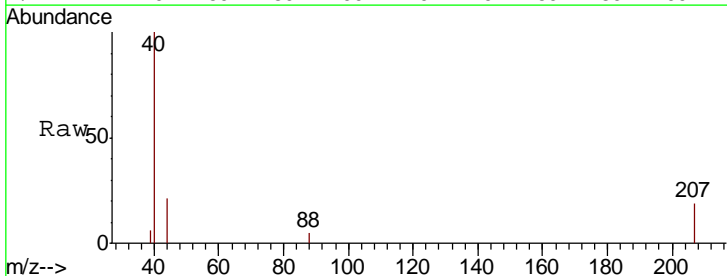
Instrument :
 MSVOA_D
 ClientSampled :
 SB-4-(5-6)

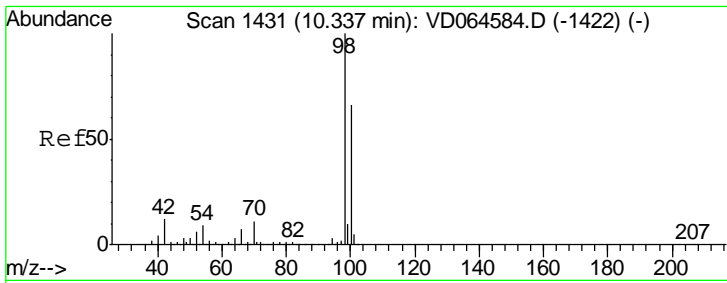
Tgt Ion	Resp	Lower	Upper
117	100		
119	7.5	77.3	115.9#
121	0.0	25.0	37.6#



#49
 1,4-Dioxane
 Concen: 1.813 ug/l
 RT: 9.43 min Scan# 1277
 Delta R.T. -0.03 min
 Lab File: VD064714.D
 Acq: 02 Jan 2020 13:36

Tgt Ion	Resp	Lower	Upper
88	100		
43	150.0	27.7	41.5#
58	0.0	53.8	80.6#

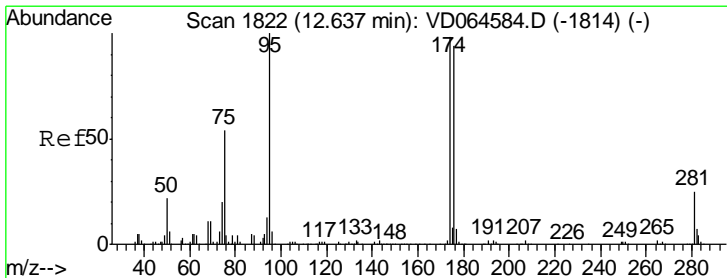
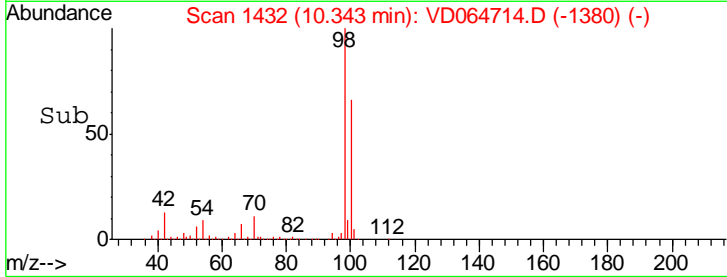
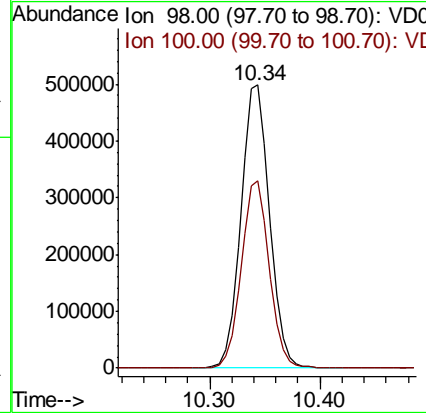
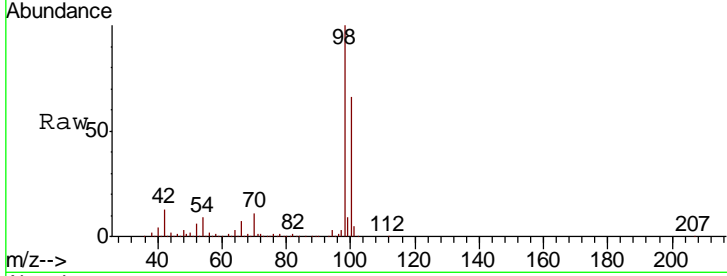




#50
 Toluene-d8
 Concen: 50.376 ug/l
 RT: 10.34 min Scan# 1432
 Delta R.T. 0.01 min
 Lab File: VD064714.D
 Acq: 02 Jan 2020 13:36

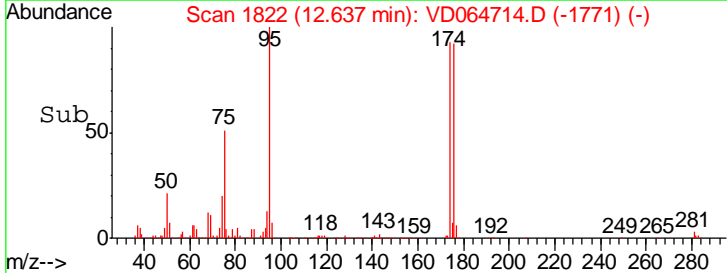
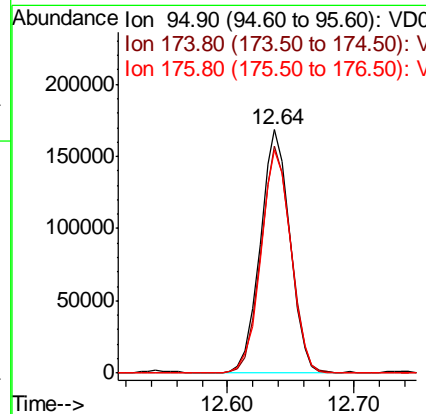
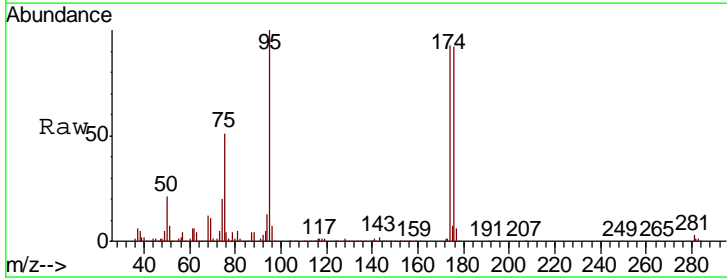
Instrument :
 MSVOA_D
 ClientSampleID :
 SB-4-(5-6)

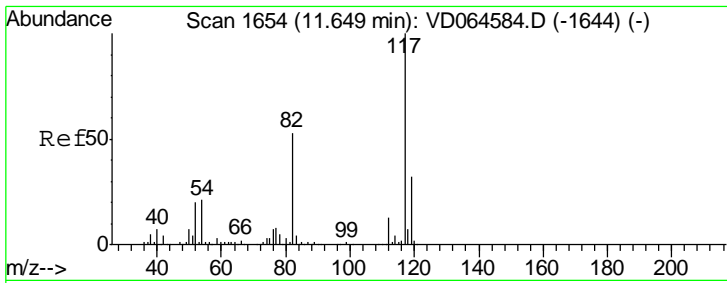
Tgt Ion: 98 Resp: 906569
 Ion Ratio Lower Upper
 98 100
 100 65.0 51.7 77.5



#62
 4-Bromofluorobenzene
 Concen: 48.485 ug/l
 RT: 12.64 min Scan# 1822
 Delta R.T. 0.00 min
 Lab File: VD064714.D
 Acq: 02 Jan 2020 13:36

Tgt Ion: 95 Resp: 275905
 Ion Ratio Lower Upper
 95 100
 174 93.4 0.0 193.2
 176 92.1 0.0 184.2

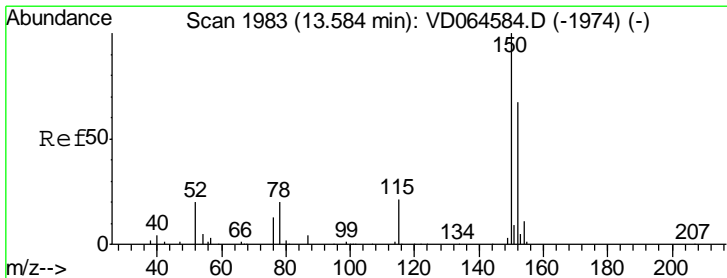
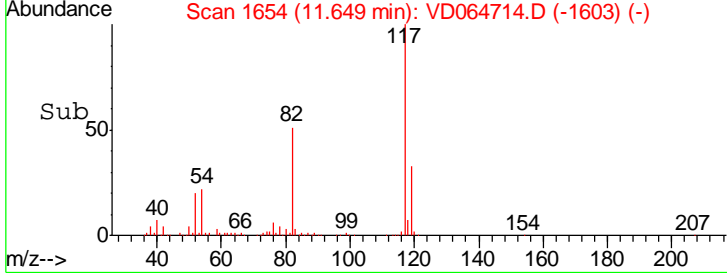
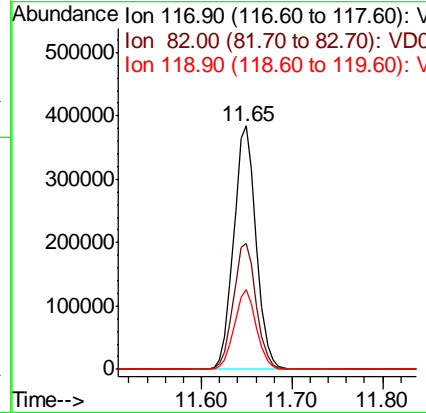
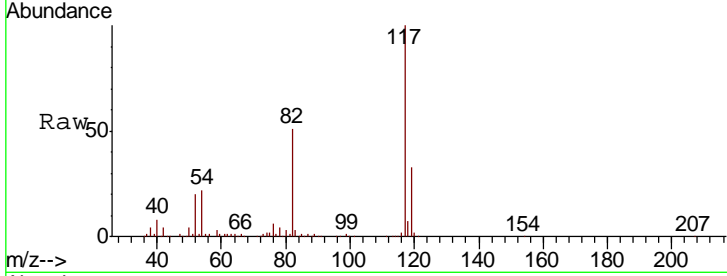




#63
 Chlorobenzene-d5
 Concen: 50.000 ug/l
 RT: 11.65 min Scan# 1654
 Delta R.T. 0.00 min
 Lab File: VD064714.D
 Acq: 02 Jan 2020 13:36

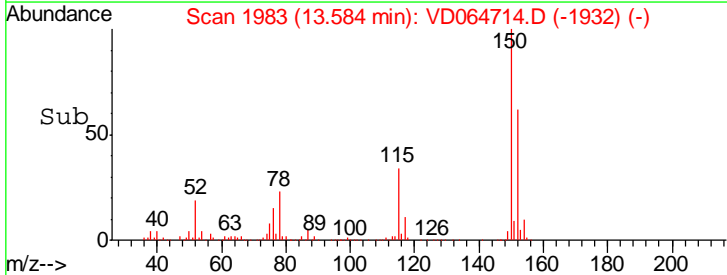
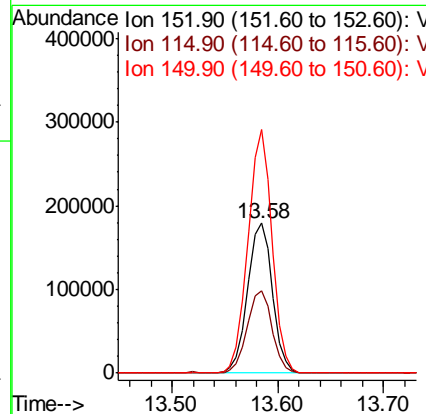
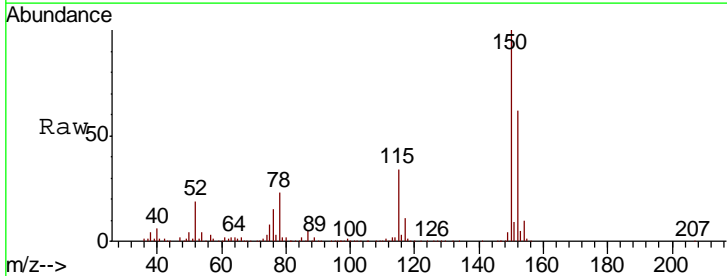
Instrument :
 MSVOA_D
 ClientSampled :
 SB-4-(5-6)

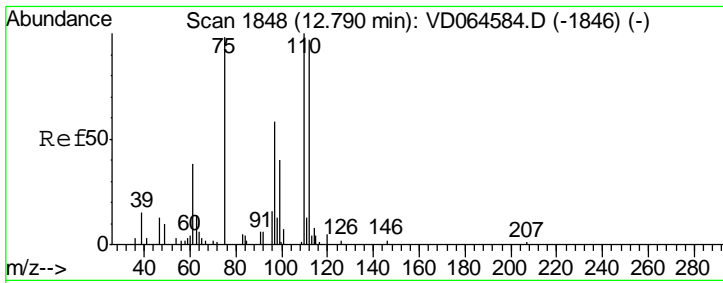
Tgt Ion	Resp	Lower	Upper
117	100		
82	51.5	42.2	63.4
119	32.9	26.0	39.0



#72
 1,4-Dichlorobenzene-d4
 Concen: 50.000 ug/l
 RT: 13.58 min Scan# 1983
 Delta R.T. 0.00 min
 Lab File: VD064714.D
 Acq: 02 Jan 2020 13:36

Tgt Ion	Resp	Lower	Upper
152	100		
115	55.0	27.8	83.4
150	157.3	0.0	351.4

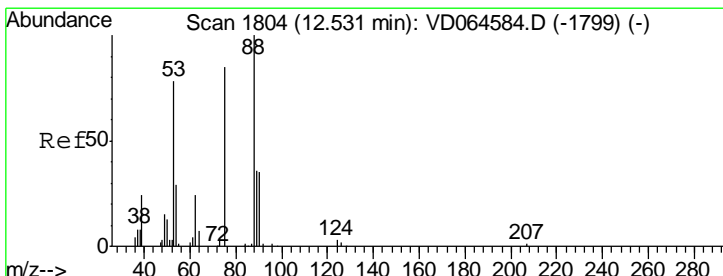
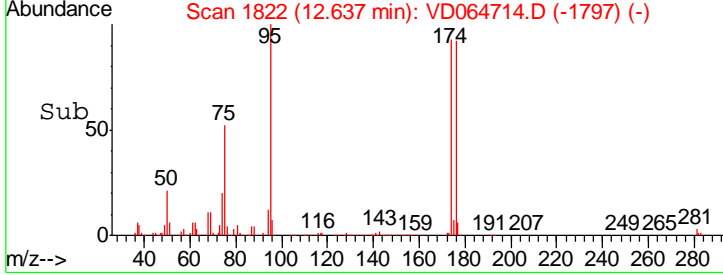
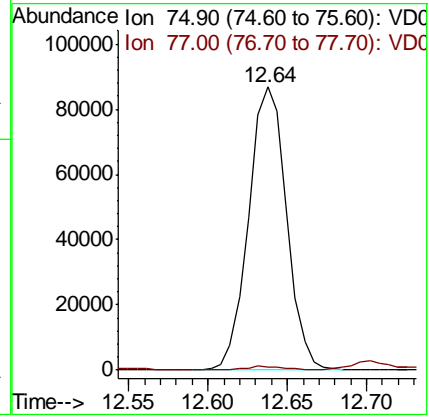
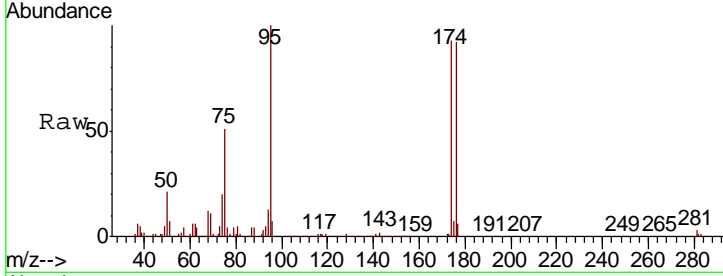




#76
 1,2,3-Trichloropropane
 Concen: 62.366 ug/l
 RT: 12.64 min Scan# 1822
 Delta R.T. -0.15 min
 Lab File: VD064714.D
 Acq: 02 Jan 2020 13:36

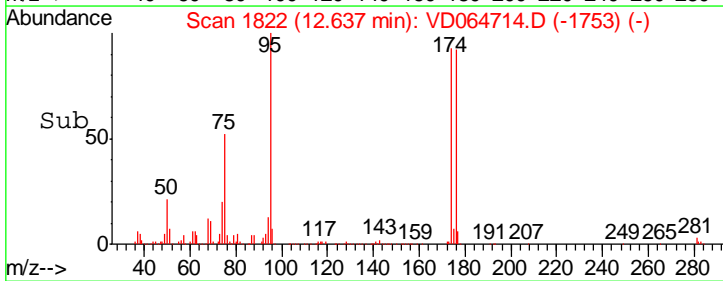
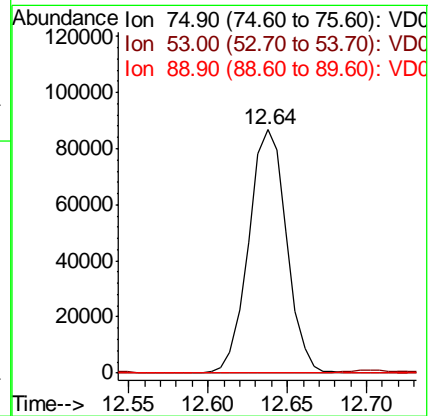
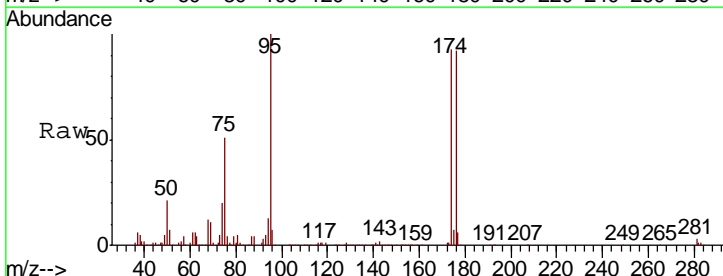
Instrument : MSVOA_D
 ClientSampled : SB-4-(5-6)

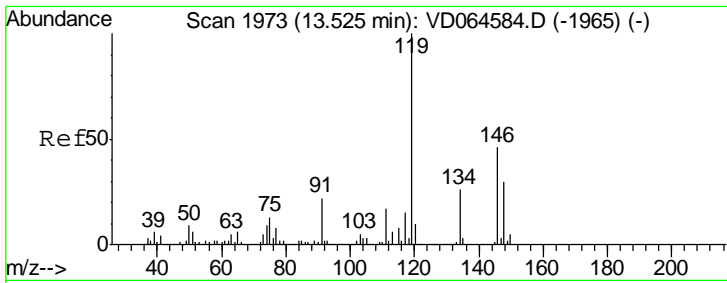
Tgt Ion	Resp	Lower	Upper
75	100		
77	1.5	0.0	0.0#



#81
 trans-1,4-Dichloro-2-butene
 Concen: 130.436 ug/l
 RT: 12.64 min Scan# 1822
 Delta R.T. 0.11 min
 Lab File: VD064714.D
 Acq: 02 Jan 2020 13:36

Tgt Ion	Resp	Lower	Upper
75	100		
53	0.0	78.8	118.2#
89	0.0	38.3	57.5#

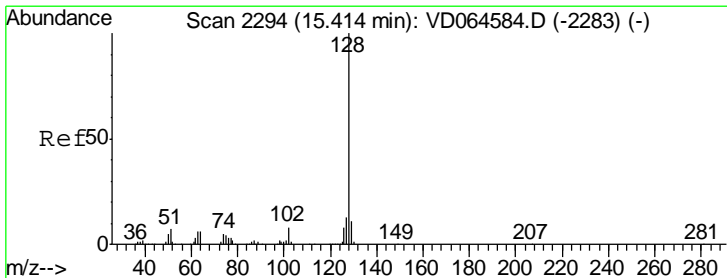
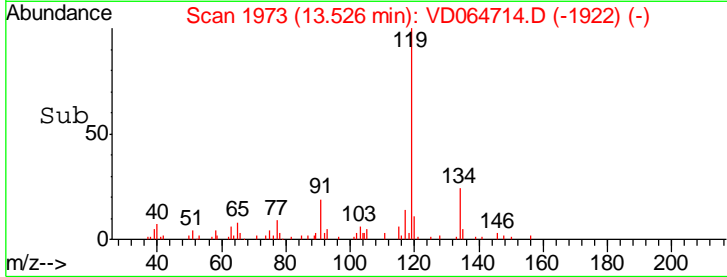
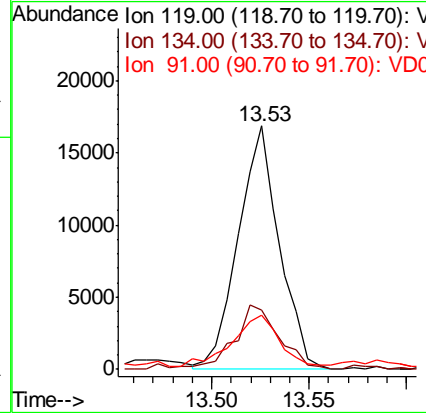
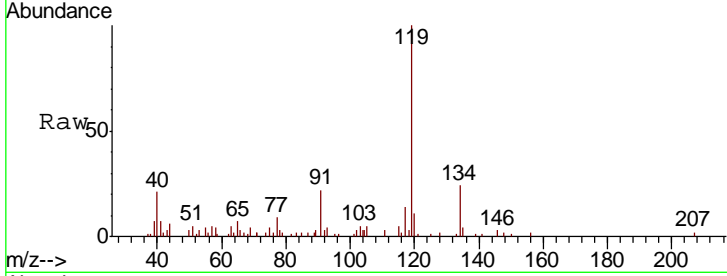




#86
 p-Isopropyltoluene
 Concen: 1.255 ug/l
 RT: 13.53 min Scan# 1973
 Delta R.T. 0.00 min
 Lab File: VD064714.D
 Acq: 02 Jan 2020 13:36

Instrument : MSVOA_D
 ClientSampled : SB-4-(5-6)

Tgt Ion	Resp	Lower	Upper
119	24540		
134	28.4	13.4	40.1
91	25.1	11.2	33.6



#95
 Naphthalene
 Concen: 1.738 ug/l
 RT: 15.41 min Scan# 2294
 Delta R.T. 0.00 min
 Lab File: VD064714.D
 Acq: 02 Jan 2020 13:36

Tgt Ion	Resp	Lower	Upper
128	16910		
127	14.2	10.3	15.5
129	13.3	8.5	12.7#

