

Data Path : Z:\VOASRV\HPCHEM1\MSVOA D\DATA\VD010220\
 Data File : VD064716.D
 Acq On : 02 Jan 2020 14:34
 Operator : VA/SY
 Sample : K6456-01
 Misc : 9.30G/5.00ml/MSVOA D/SOIL
 ALS Vial : 8 Sample Multiplier: 1

Instrument :
 MSVOA_D
 ClientSampleId :
 SB-03

Quant Time: Jan 03 01:05:30 2020
 Quant Method : Z:\VOASRV\HPCHEM1\MSVOA_D\METHOD\82D122419S.M
 Quant Title : SW846 8260
 QLast Update : Tue Dec 24 13:19:06 2019
 Response via : Initial Calibration

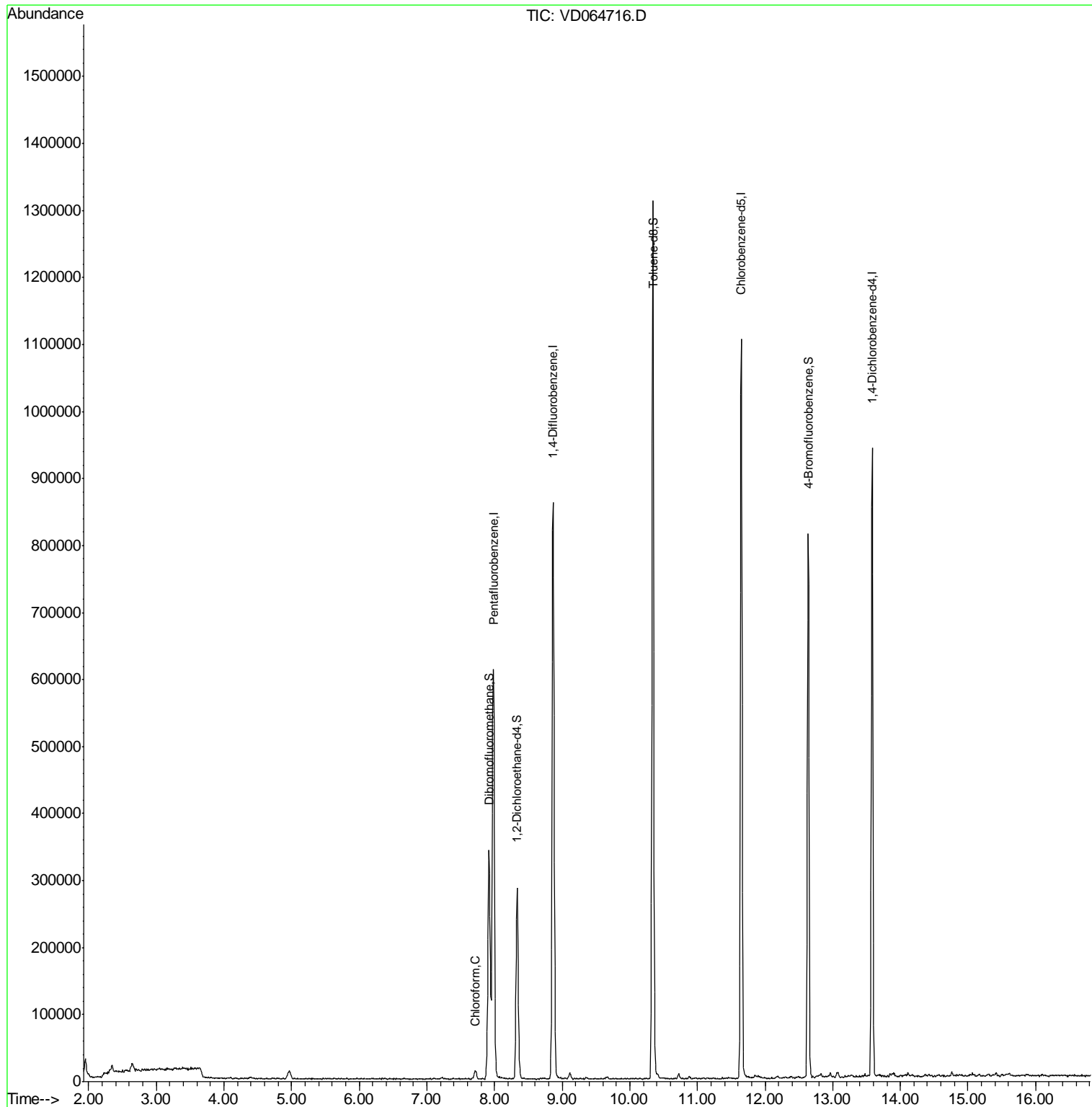
Internal Standards	R.T.	QIon	Response	Conc	Units	Dev(Min)
1) Pentafluorobenzene	7.99	168	491943	50.00	ug/l	0.00
34) 1,4-Difluorobenzene	8.87	114	751388	50.00	ug/l	0.00
63) Chlorobenzene-d5	11.65	117	627368	50.00	ug/l	0.00
72) 1,4-Dichlorobenzene-d4	13.58	152	244774	50.00	ug/l	0.00
System Monitoring Compounds						
33) 1,2-Dichloroethane-d4	8.33	65	229641	52.94	ug/l	0.00
Spiked Amount	50.000		Recovery	=	105.88%	
35) Dibromofluoromethane	7.92	113	237728	51.57	ug/l	0.00
Spiked Amount	50.000		Recovery	=	103.14%	
50) Toluene-d8	10.34	98	888121	50.30	ug/l	0.00
Spiked Amount	50.000		Recovery	=	100.60%	
62) 4-Bromofluorobenzene	12.64	95	239739	42.94	ug/l	0.00
Spiked Amount	50.000		Recovery	=	85.88%	
Target Compounds						
30) Chloroform	7.72	83	11601	1.368	ug/l	98

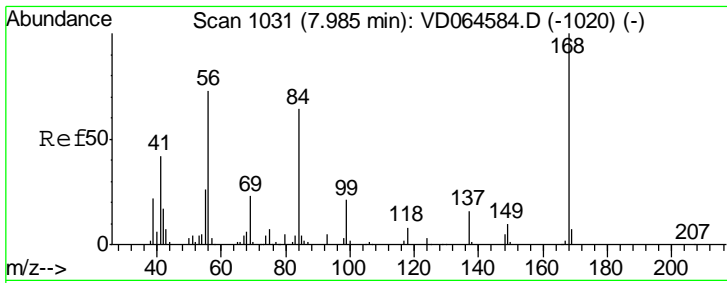
(#) = qualifier out of range (m) = manual integration (+) = signals summed

Data Path : Z:\VOASRV\HPCHEM1\MSVOA D\DATA\VD010220\
 Data File : VD064716.D
 Acq On : 02 Jan 2020 14:34
 Operator : VA/SY
 Sample : K6456-01
 Misc : 9.30G/5.00ml/MSVOA D/SOIL
 ALS Vial : 8 Sample Multiplier: 1

Instrument :
 MSVOA_D
 ClientSampled :
 SB-03

Quant Time: Jan 03 01:05:30 2020
 Quant Method : Z:\VOASRV\HPCHEM1\MSVOA_D\METHOD\82D122419S.M
 Quant Title : SW846 8260
 QLast Update : Tue Dec 24 13:19:06 2019
 Response via : Initial Calibration

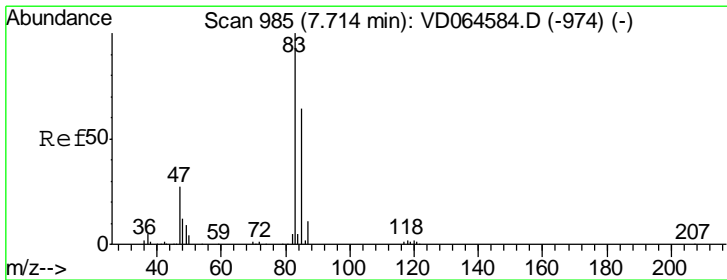
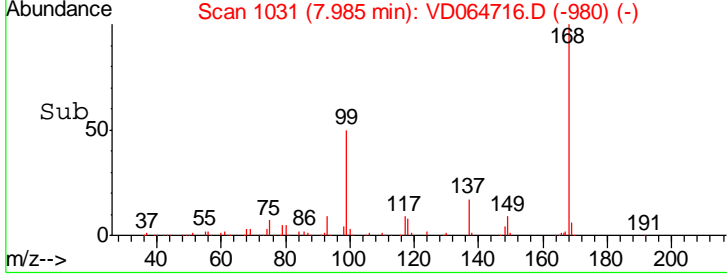
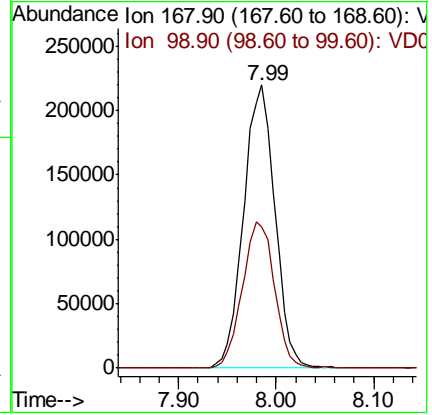
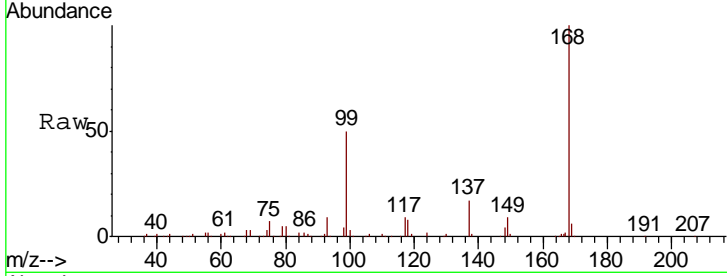




#1
 Pentafluorobenzene
 Concen: 50.000 ug/l
 RT: 7.99 min Scan# 1031
 Delta R.T. 0.00 min
 Lab File: VD064716.D
 Acq: 02 Jan 2020 14:34

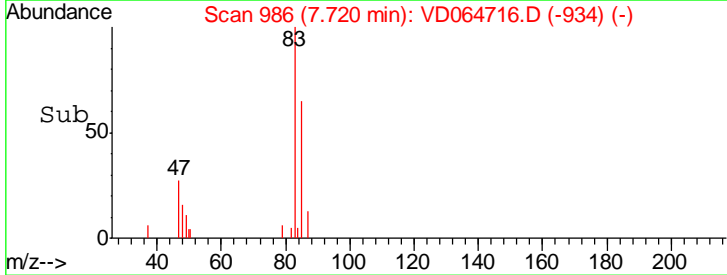
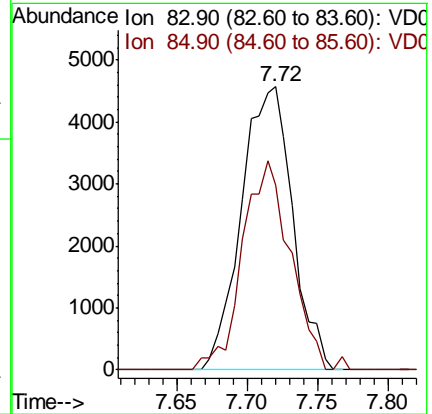
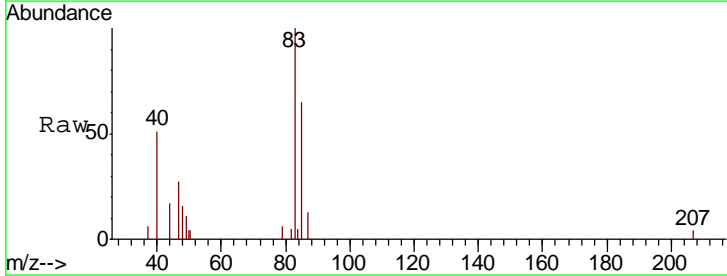
Instrument :
 MSVOA_D
 ClientSampled :
 SB-03

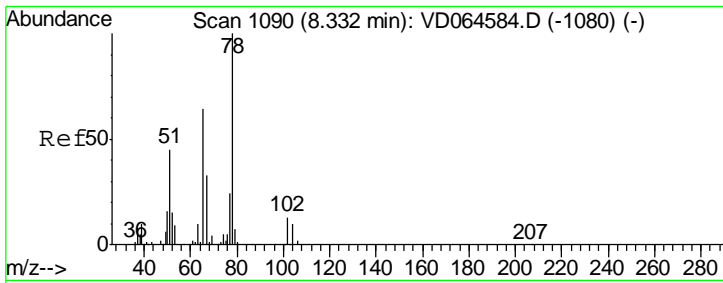
Tgt Ion: 168 Resp: 491943
 Ion Ratio Lower Upper
 168 100
 99 50.0 41.8 62.6



#30
 Chloroform
 Concen: 1.368 ug/l
 RT: 7.72 min Scan# 986
 Delta R.T. 0.01 min
 Lab File: VD064716.D
 Acq: 02 Jan 2020 14:34

Tgt Ion: 83 Resp: 11601
 Ion Ratio Lower Upper
 83 100
 85 65.2 51.1 76.7

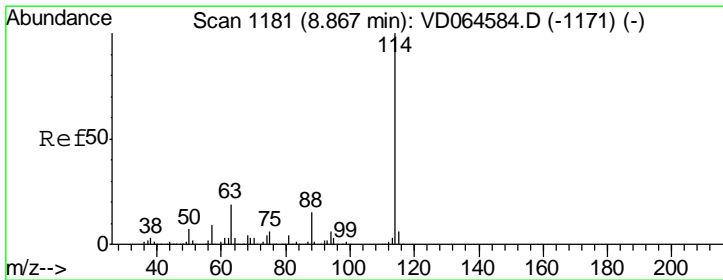
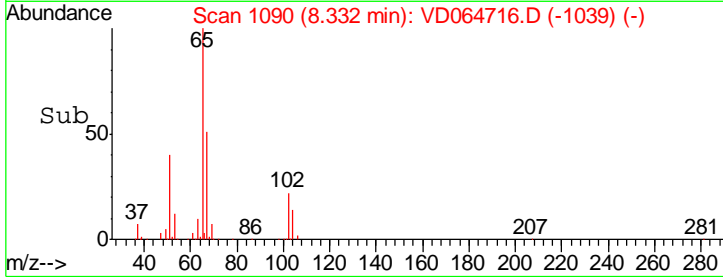
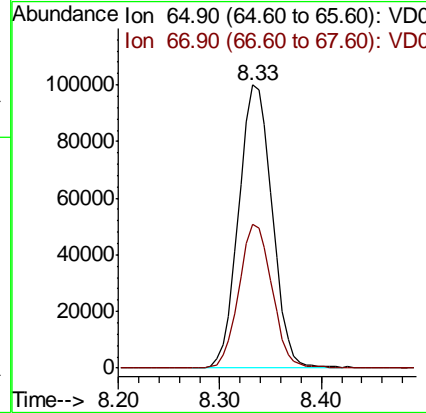
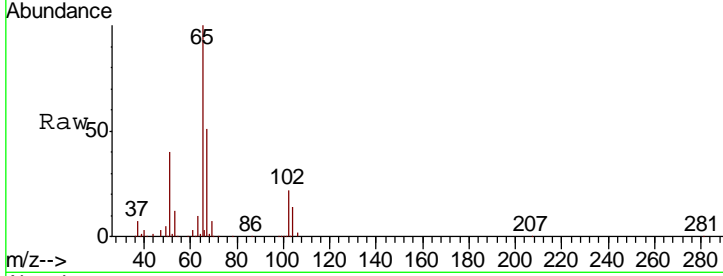




#33
 1,2-Dichloroethane-d4
 Concen: 52.938 ug/l
 RT: 8.33 min Scan# 1090
 Delta R.T. 0.00 min
 Lab File: VD064716.D
 Acq: 02 Jan 2020 14:34

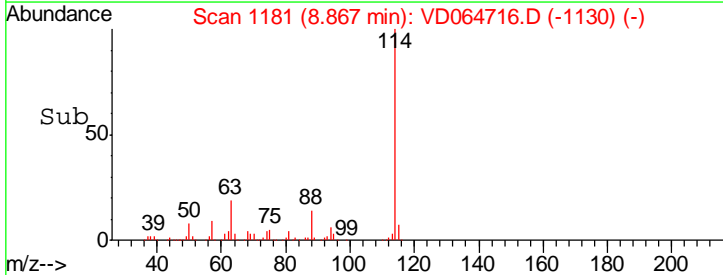
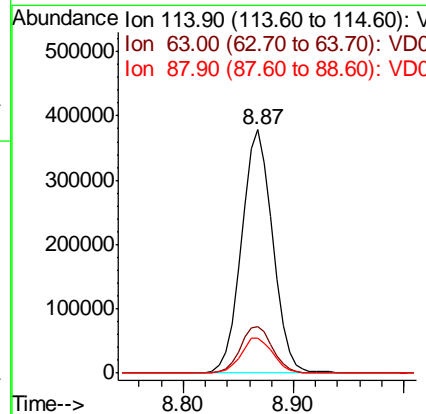
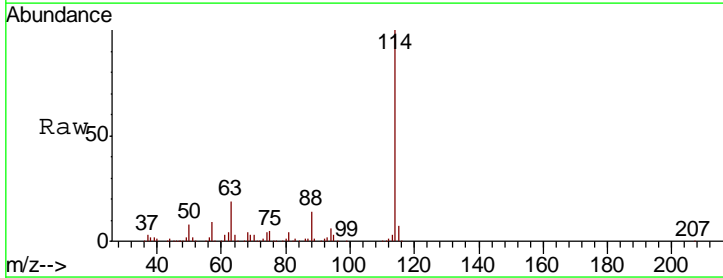
Instrument :
 MSVOA_D
 ClientSampled :
 SB-03

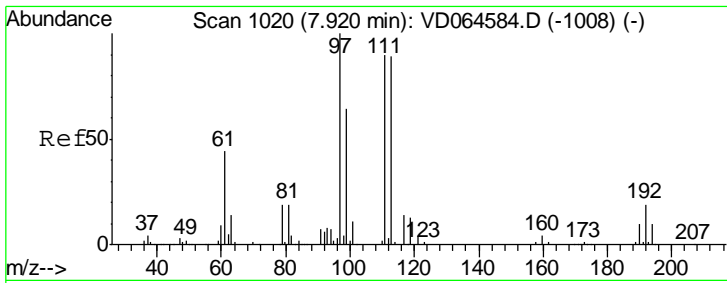
Tgt Ion	Resp	Lower	Upper
65	100		
67	50.2	0.0	106.2



#34
 1,4-Difluorobenzene
 Concen: 50.000 ug/l
 RT: 8.87 min Scan# 1181
 Delta R.T. 0.00 min
 Lab File: VD064716.D
 Acq: 02 Jan 2020 14:34

Tgt Ion	Resp	Lower	Upper
114	100		
63	19.3	0.0	38.0
88	14.4	0.0	29.2

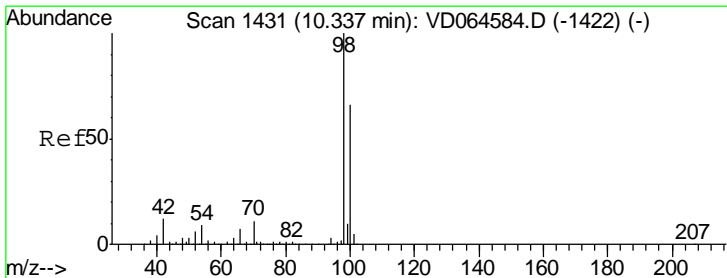
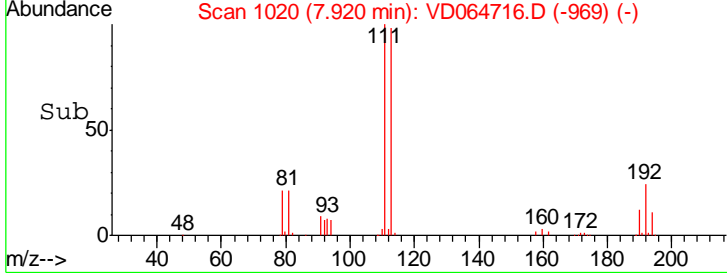
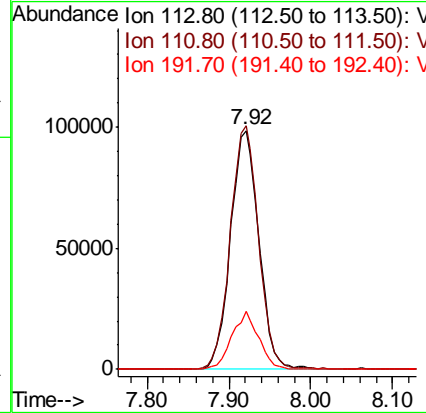
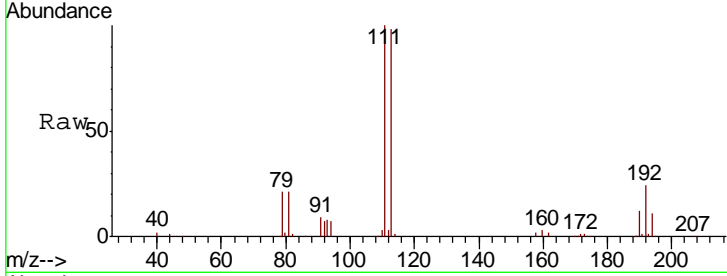




#35
 Dibromofluoromethane
 Concen: 51.569 ug/l
 RT: 7.92 min Scan# 1020
 Delta R.T. 0.00 min
 Lab File: VD064716.D
 Acq: 02 Jan 2020 14:34

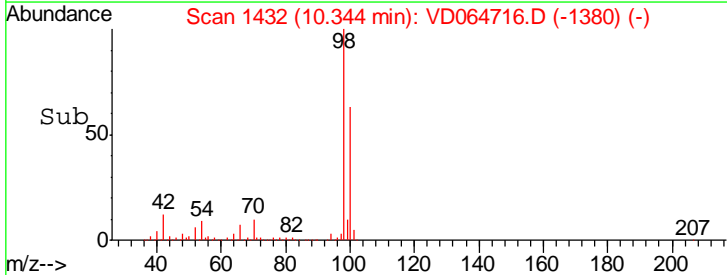
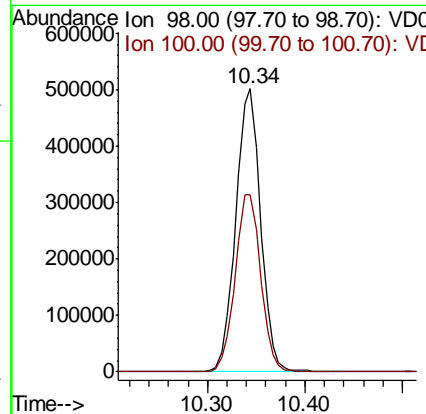
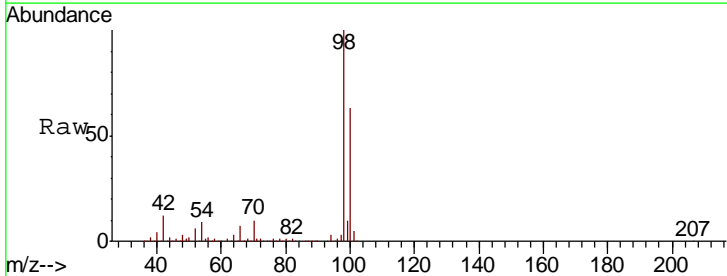
Instrument :
 MSVOA_D
 ClientSampled :
 SB-03

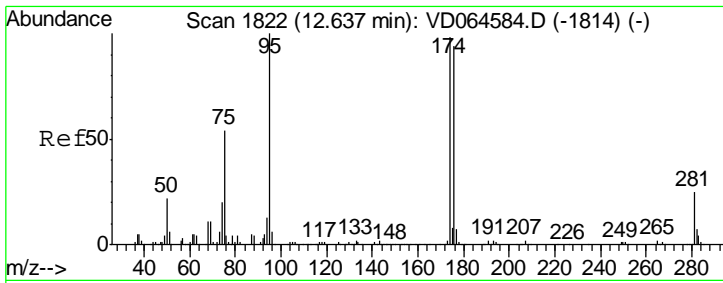
Tgt Ion	Resp	Lower	Upper
113	100		
111	101.7	80.6	121.0
192	22.8	17.9	26.9



#50
 Toluene-d8
 Concen: 50.303 ug/l
 RT: 10.34 min Scan# 1432
 Delta R.T. 0.01 min
 Lab File: VD064716.D
 Acq: 02 Jan 2020 14:34

Tgt Ion	Resp	Lower	Upper
98	100		
100	64.5	51.7	77.5

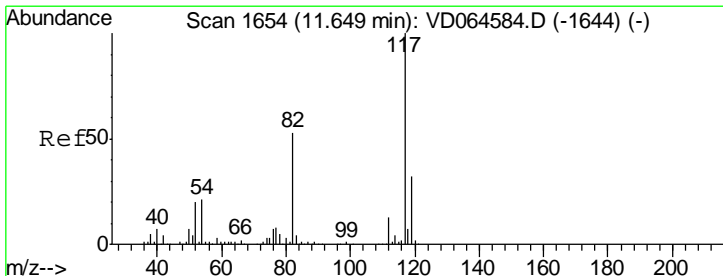
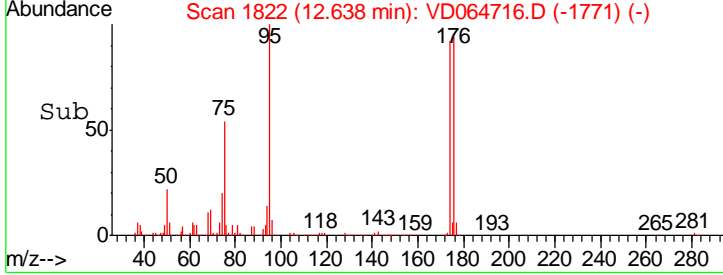
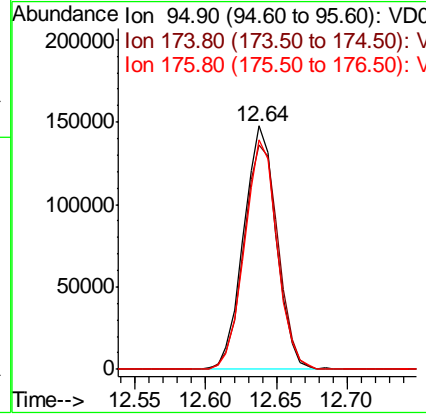
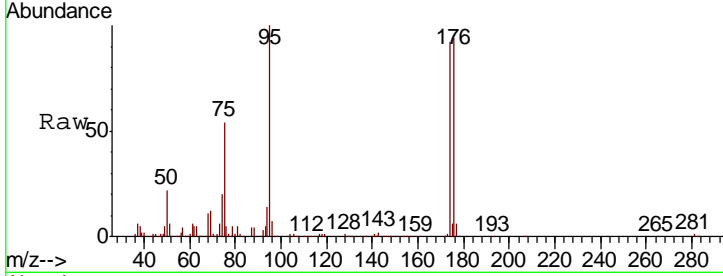




#62
 4-Bromofluorobenzene
 Concen: 42.942 ug/l
 RT: 12.64 min Scan# 1822
 Delta R.T. 0.00 min
 Lab File: VD064716.D
 Acq: 02 Jan 2020 14:34

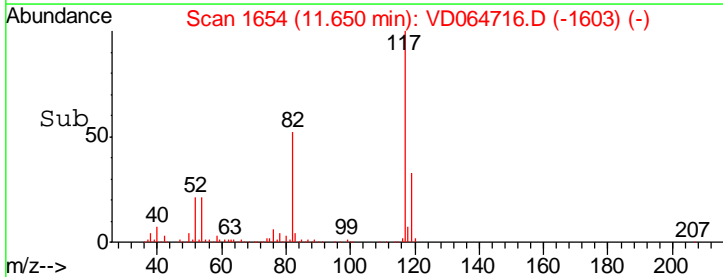
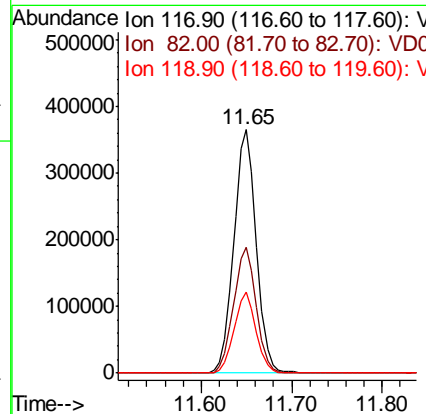
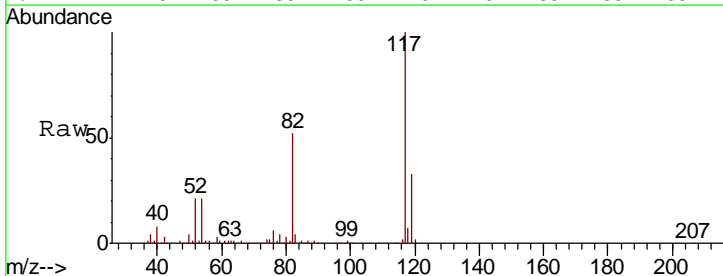
Instrument : MSVOA_D
 ClientSampled : SB-03

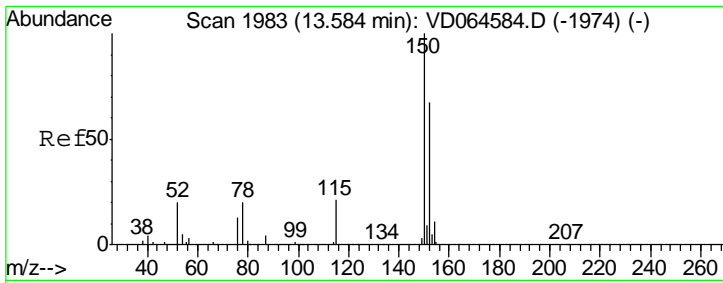
Tgt Ion	Resp	Lower	Upper
95	239739		
174	97.3	0.0	193.2
176	93.3	0.0	184.2



#63
 Chlorobenzene-d5
 Concen: 50.000 ug/l
 RT: 11.65 min Scan# 1654
 Delta R.T. 0.00 min
 Lab File: VD064716.D
 Acq: 02 Jan 2020 14:34

Tgt Ion	Resp	Lower	Upper
117	627368		
82	51.8	42.2	63.4
119	33.3	26.0	39.0





#72
 1,4-Dichlorobenzene-d4
 Concen: 50.000 ug/l
 RT: 13.58 min Scan# 1983
 Delta R.T. 0.00 min
 Lab File: VD064716.D
 Acq: 02 Jan 2020 14:34

Instrument :
 MSVOA_D
 ClientSampleID :
 SB-03

Tot Ion	Resp	Lower	Upper
152	100		
115	55.0	27.8	83.4
150	158.6	0.0	351.4

