

Data Path : Z:\VOASRV\HPCHEM1\MSVOA\_D\DATA\VD010320\  
 Data File : VD064765.D  
 Acq On : 04 Jan 2020 07:22  
 Operator : VA/SY  
 Sample : K6484-50  
 Misc : 5.10G/5.00ml/MSVOA\_D/SOIL  
 ALS Vial : 41 Sample Multiplier: 1

Instrument :  
 MSVOA\_D  
 ClientSampled :  
 30544-46-66

Manual Integrations  
 APPROVED

apatel  
 1/6/2020 10:50:17 AM

Quant Time: Jan 06 08:27:24 2020  
 Quant Method : Z:\VOASRV\HPCHEM1\MSVOA\_D\METHOD\82D122419S.M  
 Quant Title : SW846 8260  
 QLast Update : Tue Dec 24 13:19:06 2019  
 Response via : Initial Calibration

Internal Standards	R.T.	QIon	Response	Conc	Units	Dev(Min)
1) Pentafluorobenzene	7.98	168	341808	50.00	ug/l	0.00
34) 1,4-Difluorobenzene	8.87	114	541042	50.00	ug/l	0.00
63) Chlorobenzene-d5	11.65	117	475982	50.00	ug/l	0.00
72) 1,4-Dichlorobenzene-d4	13.58	152	214809	50.00	ug/l	0.00

## System Monitoring Compounds

33) 1,2-Dichloroethane-d4	8.33	65	165382	54.87	ug/l	0.00
Spiked Amount	50.000		Recovery	=	109.74%	
35) Dibromofluoromethane	7.92	113	169793	51.15	ug/l	0.00
Spiked Amount	50.000		Recovery	=	102.30%	
50) Toluene-d8	10.34	98	642604	50.55	ug/l	0.00
Spiked Amount	50.000		Recovery	=	101.10%	
62) 4-Bromofluorobenzene	12.64	95	197718	49.18	ug/l	0.00
Spiked Amount	50.000		Recovery	=	98.36%	

## Target Compounds

						Qvalue
16) Acetone	4.16	43	98090	148.982	ug/l	94
25) 2-Butanone	7.23	43	11012	13.292	ug/l #	87
52) Toluene	10.40	92	232433	24.921	ug/l	99
67) Ethyl Benzene	11.75	91	113779	6.345	ug/l	99
68) m/p-Xylenes	11.86	106	203012	29.333	ug/l	99
69) o-Xylene	12.18	106	89360	14.295	ug/l	99
73) Isopropylbenzene	12.49	105	26409	1.720	ug/l	81
78) n-propylbenzene	12.83	91	48375	2.701	ug/l	97
80) 1,3,5-Trimethylbenzene	12.97	105	53427	4.237	ug/l	99
84) 1,2,4-Trimethylbenzene	13.28	105	210421	16.755	ug/l	98
86) p-Isopropyltoluene	13.53	119	54162	3.774	ug/l	98
89) n-Butylbenzene	13.86	91	13181m	1.020	ug/l	
95) Naphthalene	15.42	128	15775	2.209	ug/l #	93

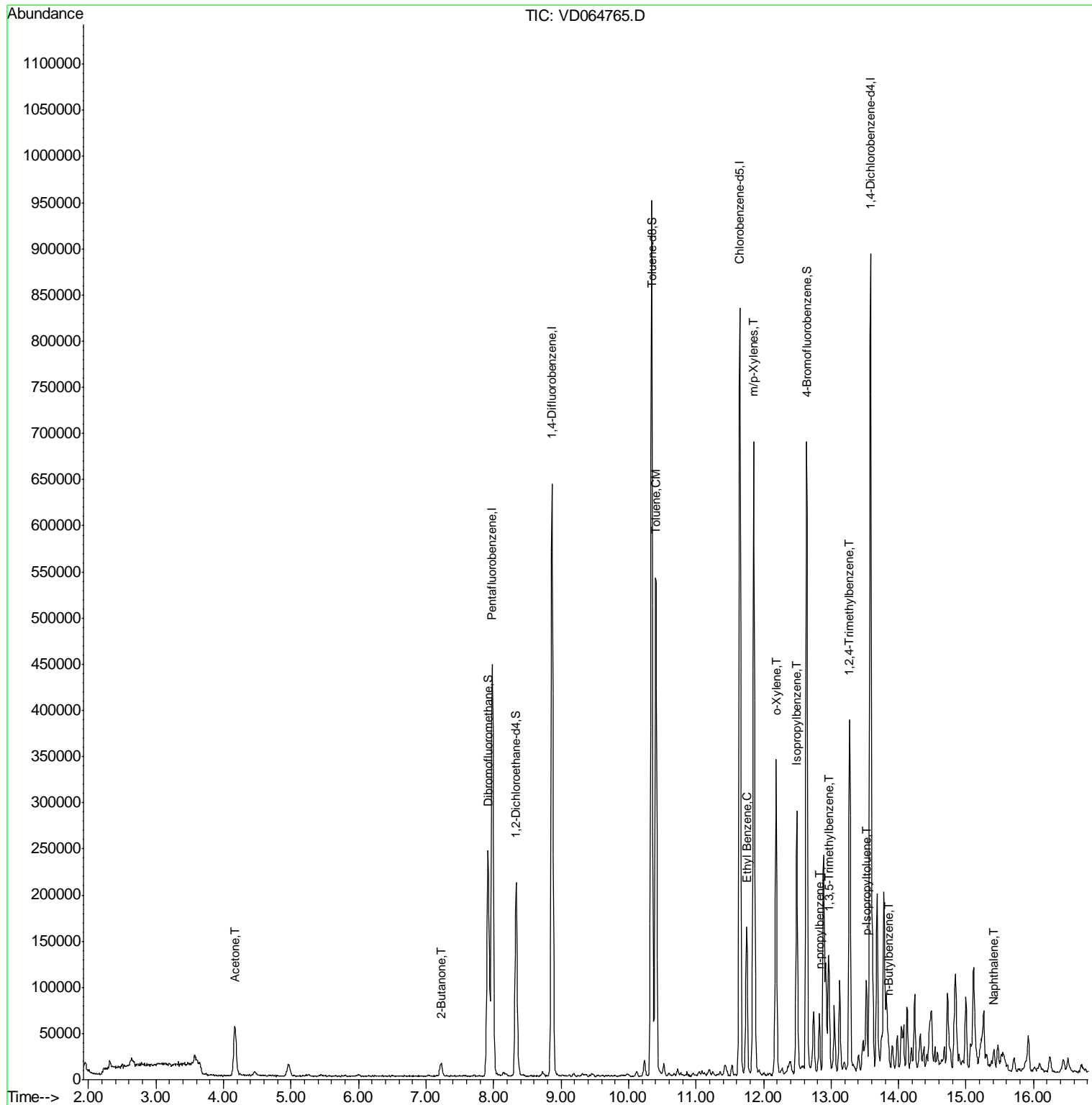
(#) = qualifier out of range (m) = manual integration (+) = signals summed

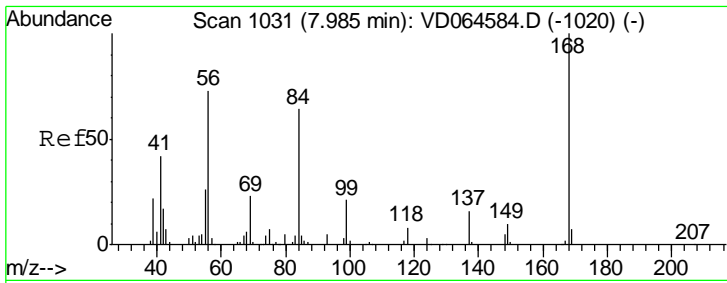
Data Path : Z:\VOASRV\HPCHEM1\MSVOA\_D\DATA\VD010320\  
 Data File : VD064765.D  
 Acq On : 04 Jan 2020 07:22  
 Operator : VA/SY  
 Sample : K6484-50  
 Misc : 5.10G/5.00ml/MSVOA\_D/SOIL  
 ALS Vial : 41 Sample Multiplier: 1

Instrument :  
 MSVOA\_D  
 Client Sampled :  
 30544-46-66

Manual Integrations  
 APPROVED  
 apatel  
 1/6/2020 10:50:17 AM

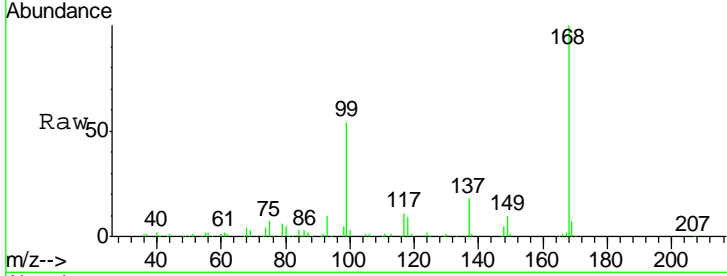
Quant Time: Jan 06 08:27:24 2020  
 Quant Method : Z:\VOASRV\HPCHEM1\MSVOA\_D\METHOD\82D122419S.M  
 Quant Title : SW846 8260  
 QLast Update : Tue Dec 24 13:19:06 2019  
 Response via : Initial Calibration





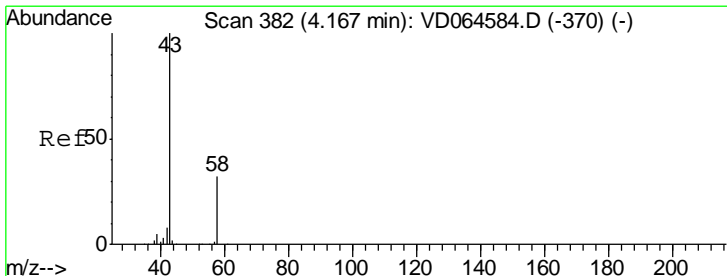
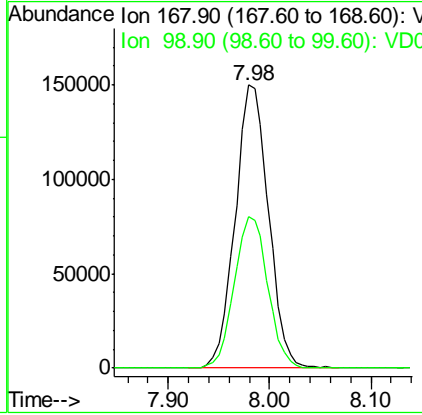
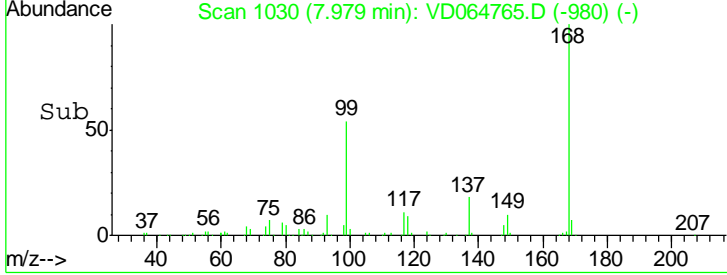
#1  
 Pentafluorobenzene  
 Concen: 50.000 ug/l  
 RT: 7.98 min Scan# 1030  
 Delta R.T. -0.01 min  
 Lab File: VD064765.D  
 Acq: 04 Jan 2020 07:22

Instrument : MSVOA\_D  
 ClientSampled : 30544-46-66

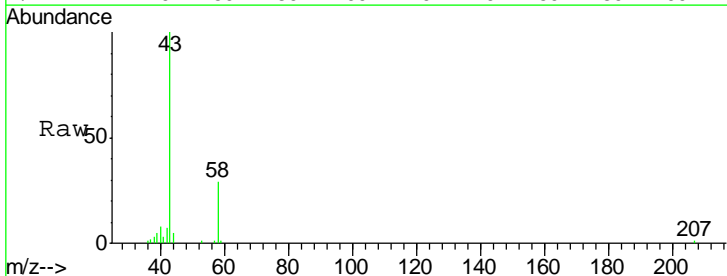


Tgt Ion: 168 Resp: 341808  
 Ion Ratio Lower Upper  
 168 100  
 99 53.7 41.8 62.6

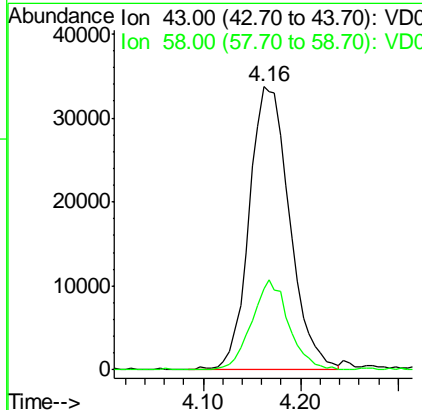
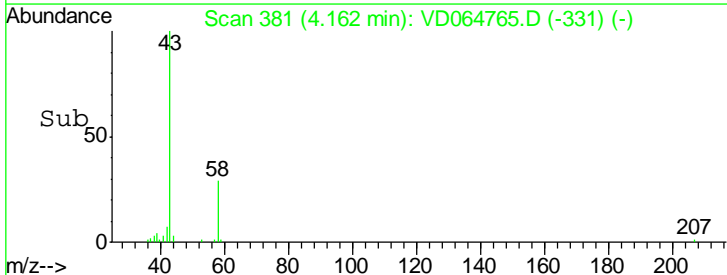
Manual Integrations APPROVED  
 apatel  
 1/6/2020 10:50:17 AM

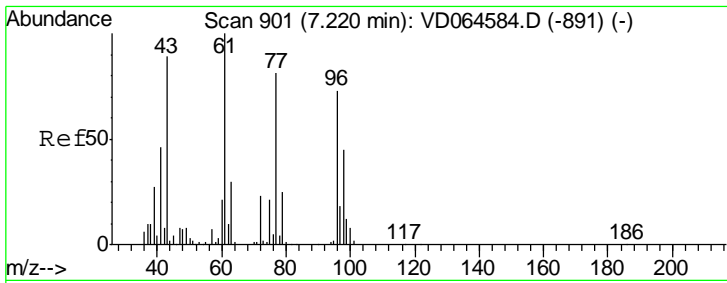


#16  
 Acetone  
 Concen: 148.982 ug/l  
 RT: 4.16 min Scan# 381  
 Delta R.T. -0.01 min  
 Lab File: VD064765.D  
 Acq: 04 Jan 2020 07:22



Tgt Ion: 43 Resp: 98090  
 Ion Ratio Lower Upper  
 43 100  
 58 28.6 25.8 38.6



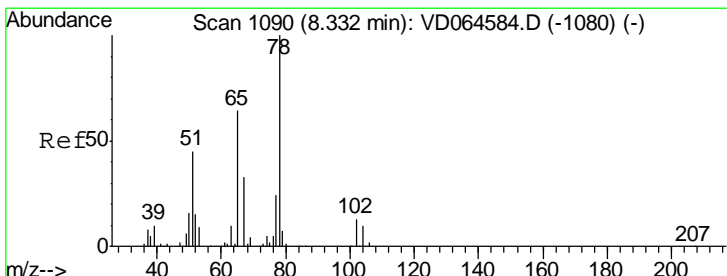
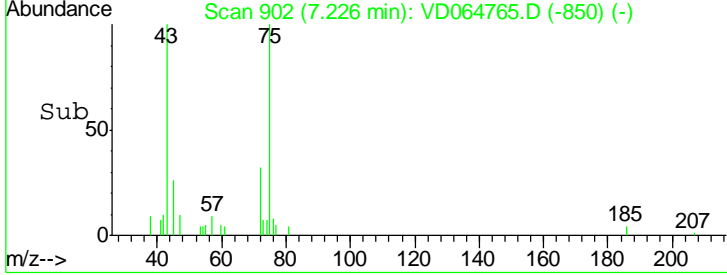
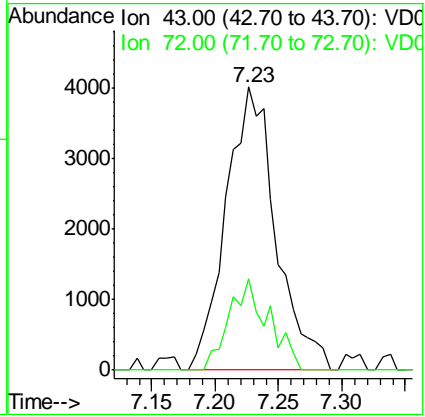
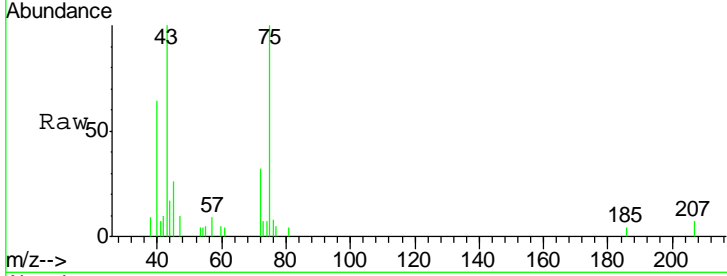


#25  
 2-Butanone  
 Concen: 13.292 ug/l  
 RT: 7.23 min Scan# 902  
 Delta R.T. 0.01 min  
 Lab File: VD064765.D  
 Acq: 04 Jan 2020 07:22

**Instrument :**  
 MSVOA\_D  
**ClientSampled :**  
 30544-46-66

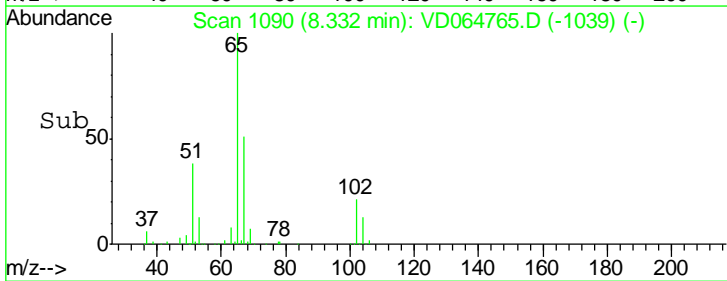
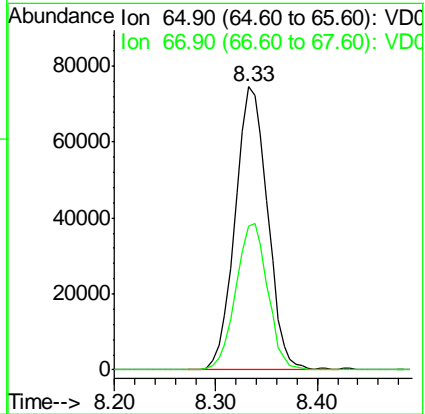
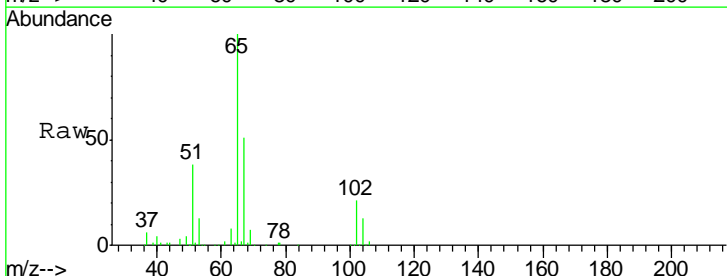
Tgt Ion	Resp	Lower	Upper
43	11012		
43	100		
72	32.5	20.7	31.1#

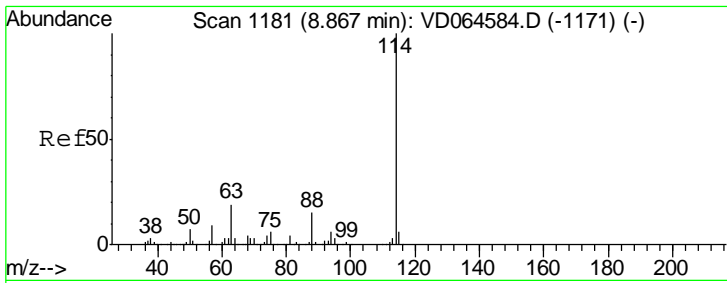
**Manual Integrations**  
**APPROVED**  
 apatel  
 1/6/2020 10:50:17 AM



#33  
 1,2-Dichloroethane-d4  
 Concen: 54.871 ug/l  
 RT: 8.33 min Scan# 1090  
 Delta R.T. 0.00 min  
 Lab File: VD064765.D  
 Acq: 04 Jan 2020 07:22

Tgt Ion	Resp	Lower	Upper
65	165382		
65	100		
67	50.9	0.0	106.2





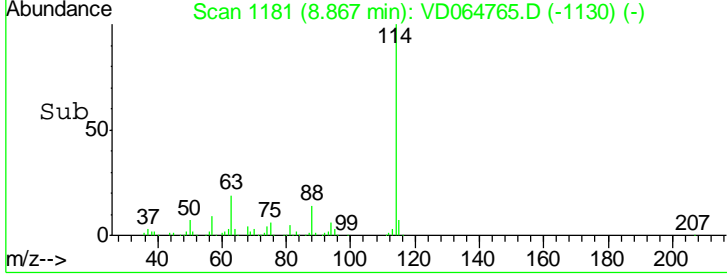
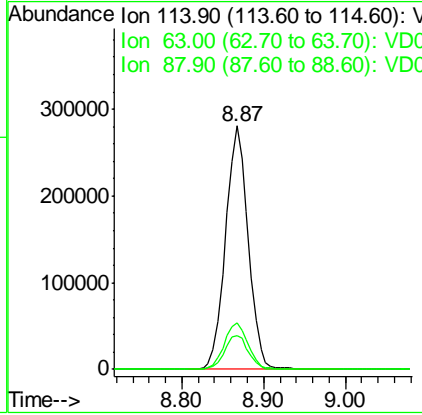
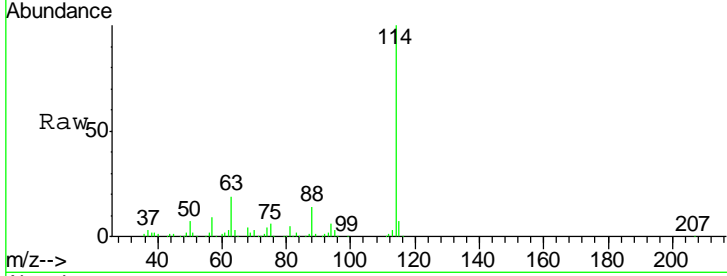
#34  
 1,4-Difluorobenzene  
 Concen: 50.000 ug/l  
 RT: 8.87 min Scan# 1181  
 Delta R.T. 0.00 min  
 Lab File: VD064765.D  
 Acq: 04 Jan 2020 07:22

**Instrument :**  
 MSVOA\_D  
**ClientSampled :**  
 30544-46-66

Tgt Ion	Resp	Lower	Upper
114	100		
63	19.0	0.0	38.0
88	13.9	0.0	29.2

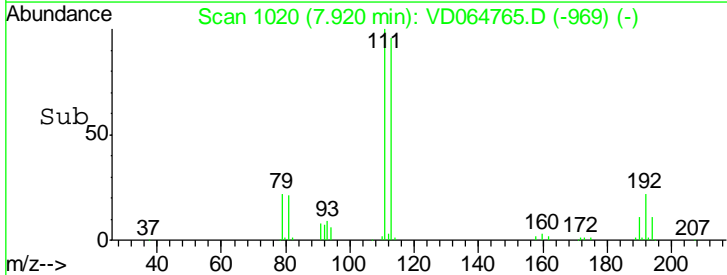
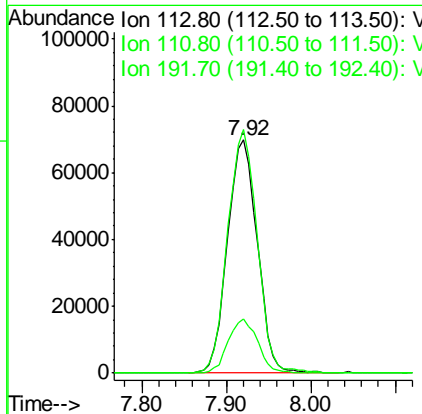
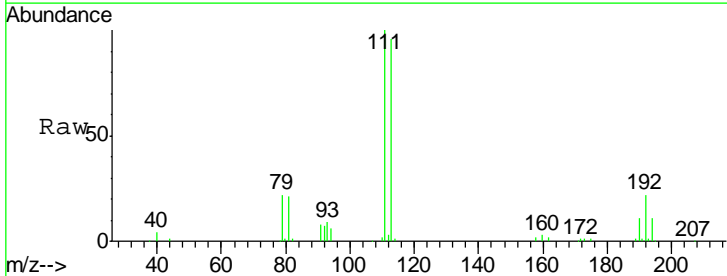
**Manual Integrations**  
**APPROVED**

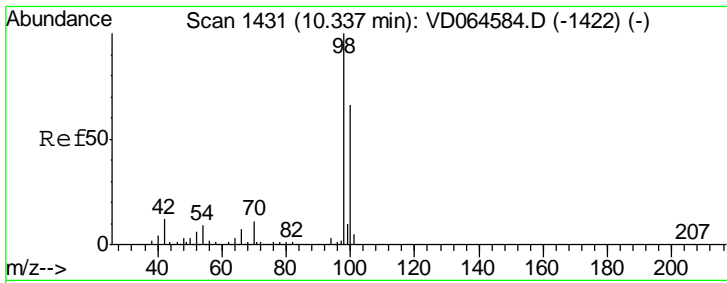
apatel  
 1/6/2020 10:50:17 AM



#35  
 Dibromofluoromethane  
 Concen: 51.152 ug/l  
 RT: 7.92 min Scan# 1020  
 Delta R.T. 0.00 min  
 Lab File: VD064765.D  
 Acq: 04 Jan 2020 07:22

Tgt Ion	Resp	Lower	Upper
113	100		
111	103.4	80.6	121.0
192	22.9	17.9	26.9



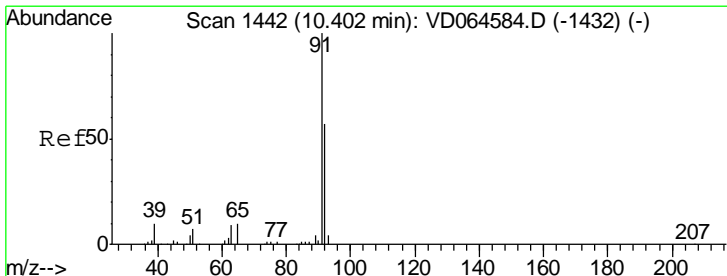
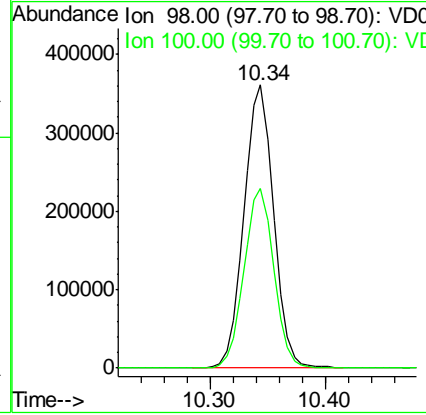
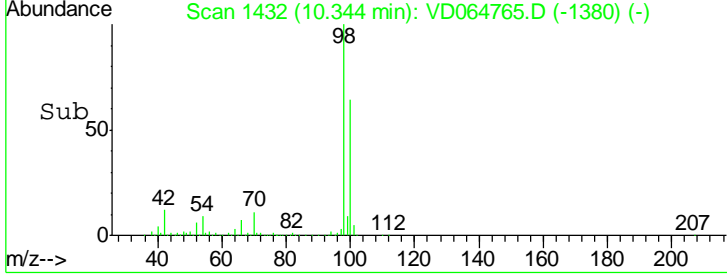
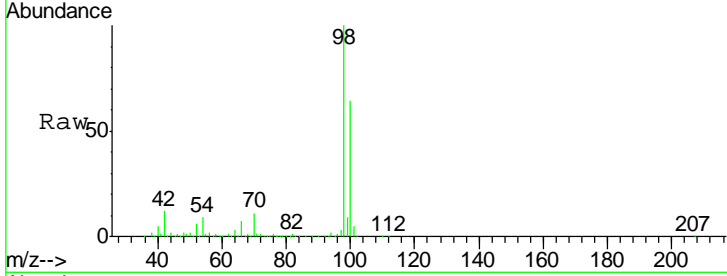


#50  
 Toluene-d8  
 Concen: 50.547 ug/l  
 RT: 10.34 min Scan# 1432  
 Delta R.T. 0.01 min  
 Lab File: VD064765.D  
 Acq: 04 Jan 2020 07:22

Instrument : MSVOA\_D  
 Client Sampled : 30544-46-66

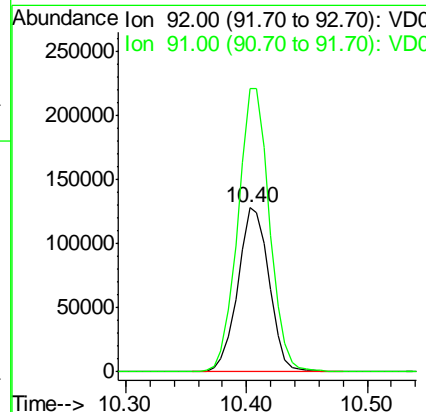
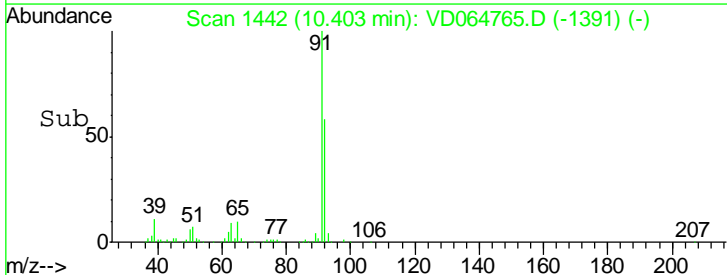
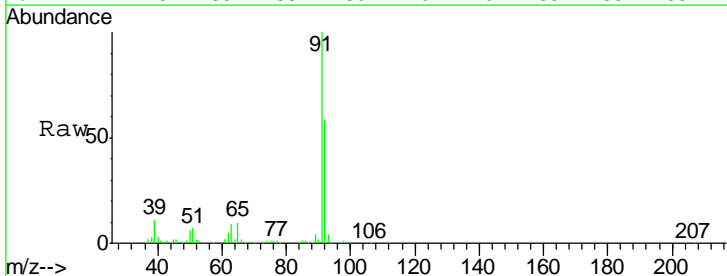
Tgt Ion	Resp	Lower	Upper
98	642604		
98	100		
100	64.4	51.7	77.5

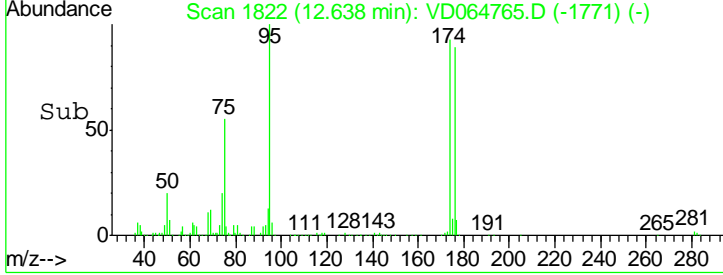
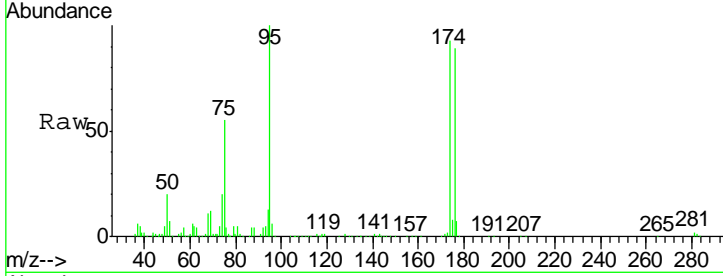
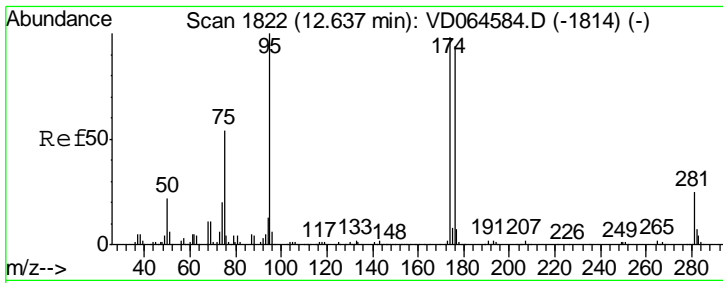
Manual Integrations APPROVED  
 apatel  
 1/6/2020 10:50:17 AM



#52  
 Toluene  
 Concen: 24.921 ug/l  
 RT: 10.40 min Scan# 1442  
 Delta R.T. 0.00 min  
 Lab File: VD064765.D  
 Acq: 04 Jan 2020 07:22

Tgt Ion	Resp	Lower	Upper
92	232433		
92	100		
91	174.5	138.7	208.1



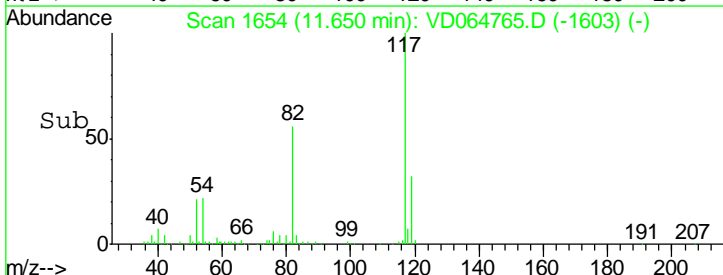
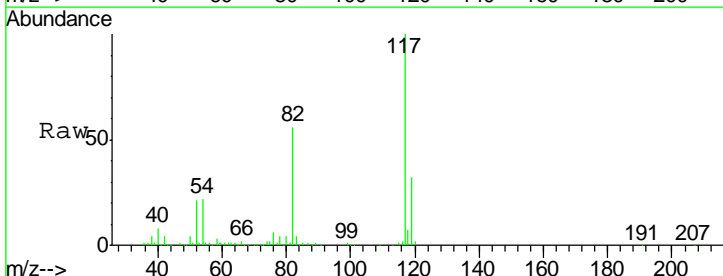
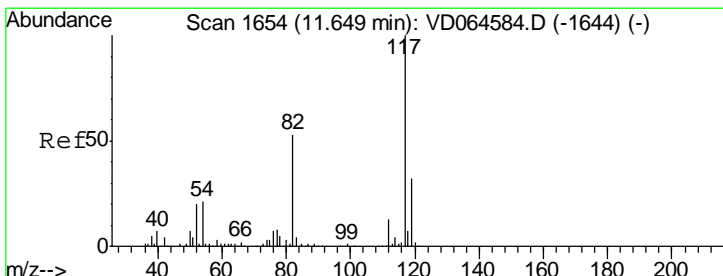
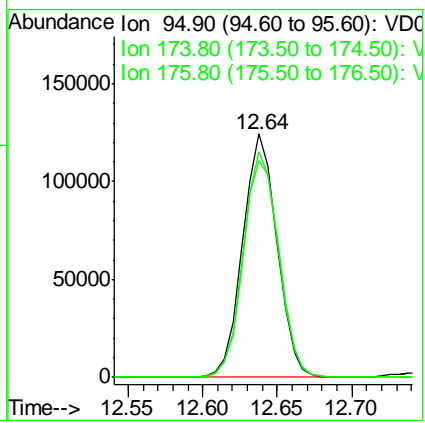


#62  
 4-Bromofluorobenzene  
 Concen: 49.184 ug/l  
 RT: 12.64 min Scan# 1822  
 Delta R.T. 0.00 min  
 Lab File: VD064765.D  
 Acq: 04 Jan 2020 07:22

Tgt Ion	Resp	Lower	Upper
95	197718		
95	100		
174	95.7	0.0	193.2
176	93.0	0.0	184.2

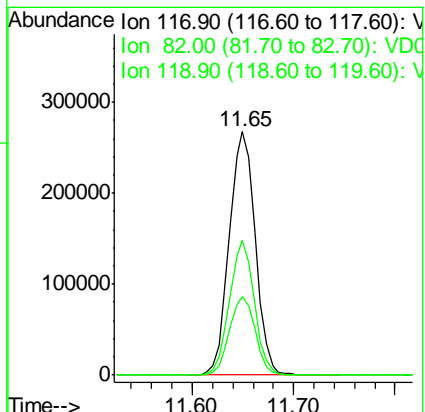
Instrument : MSVOA\_D  
 Client Sampled : 30544-46-66

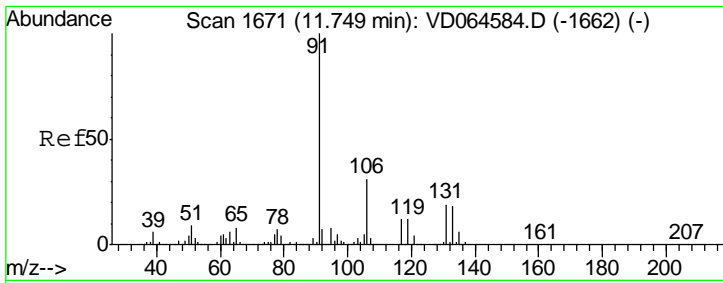
Manual Integrations  
**APPROVED**  
 apatel  
 1/6/2020 10:50:17 AM



#63  
 Chlorobenzene-d5  
 Concen: 50.000 ug/l  
 RT: 11.65 min Scan# 1654  
 Delta R.T. 0.00 min  
 Lab File: VD064765.D  
 Acq: 04 Jan 2020 07:22

Tgt Ion	Resp	Lower	Upper
117	475982		
117	100		
82	55.6	42.2	63.4
119	32.3	26.0	39.0





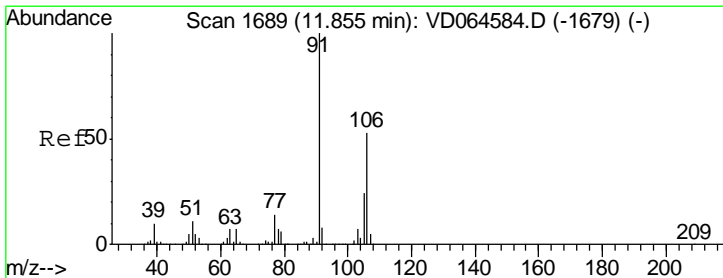
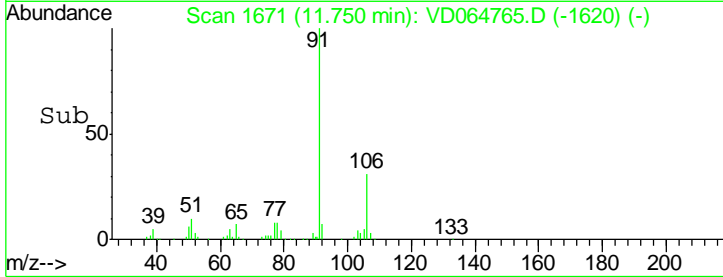
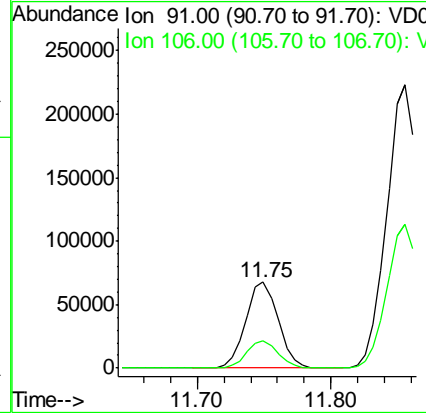
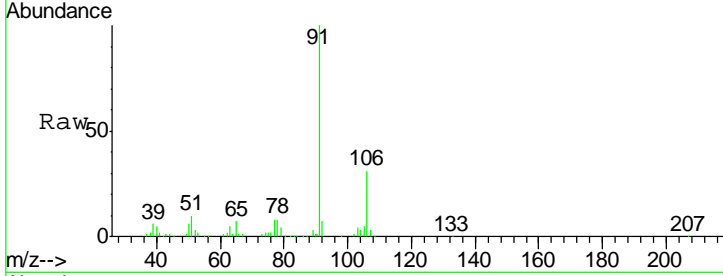
#67  
 Ethyl Benzene  
 Concen: 6.345 ug/l  
 RT: 11.75 min Scan# 1671  
 Delta R.T. 0.00 min  
 Lab File: VD064765.D  
 Acq: 04 Jan 2020 07:22

Instrument : MSVOA\_D  
 Client Sampled : 30544-46-66

Tgt Ion: 91 Resp: 113779  
 Ion Ratio Lower Upper  
 91 100  
 106 31.3 24.6 36.8

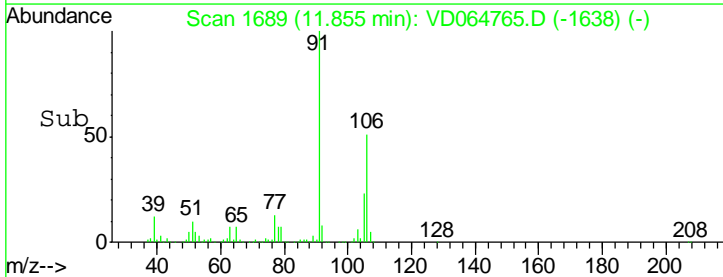
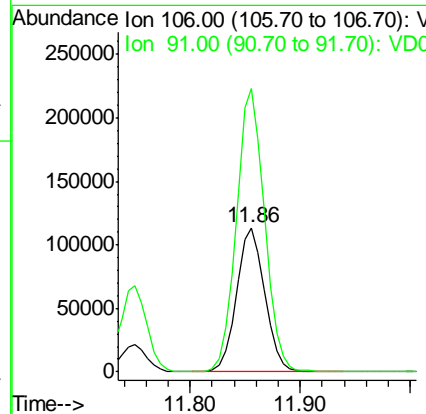
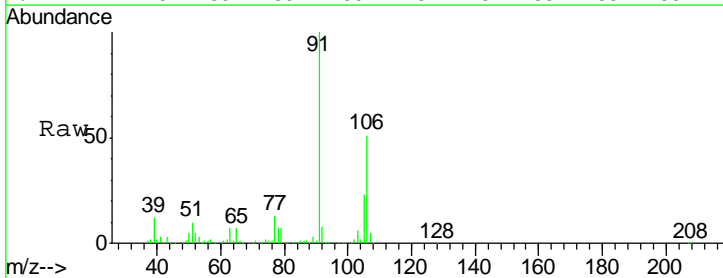
Manual Integrations  
 APPROVED

apatel  
 1/6/2020 10:50:17 AM

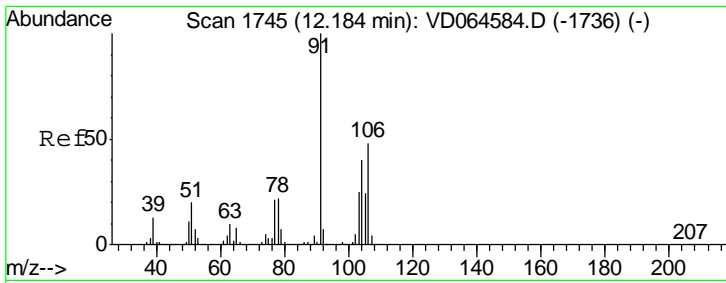


#68  
 m/p-Xylenes  
 Concen: 29.333 ug/l  
 RT: 11.86 min Scan# 1689  
 Delta R.T. 0.00 min  
 Lab File: VD064765.D  
 Acq: 04 Jan 2020 07:22

Tgt Ion: 106 Resp: 203012  
 Ion Ratio Lower Upper  
 106 100  
 91 196.6 156.3 234.5







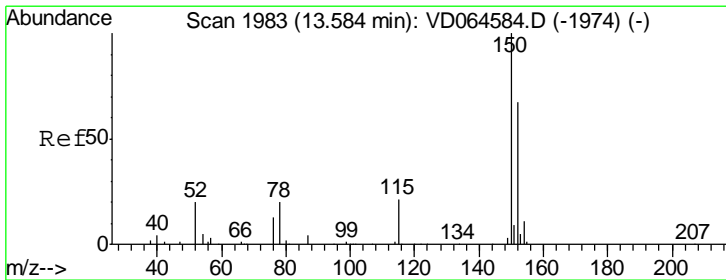
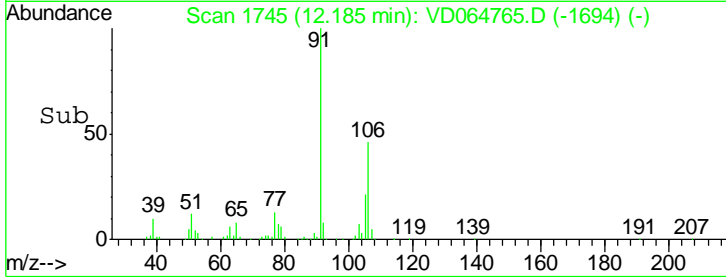
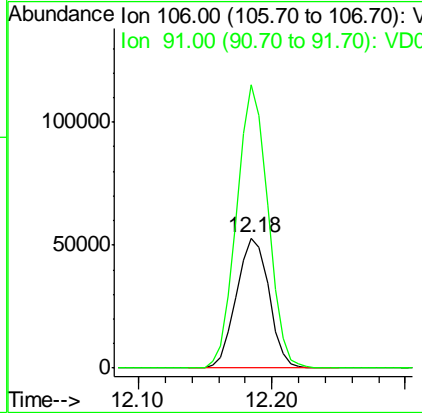
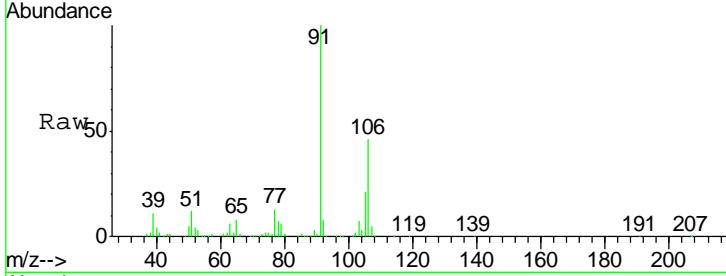
#69  
 o-Xylene  
 Concen: 14.295 ug/l  
 RT: 12.18 min Scan# 1745  
 Delta R.T. 0.00 min  
 Lab File: VD064765.D  
 Acq: 04 Jan 2020 07:22

Instrument : MSVOA\_D  
 Client Sampled : 30544-46-66

Tgt Ion	Resp	Lower	Upper
106	89360		
106	100		
91	210.4	104.8	314.4

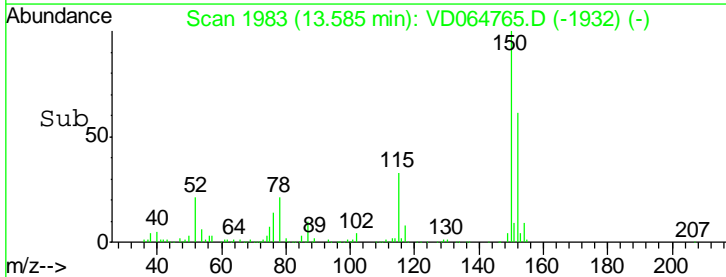
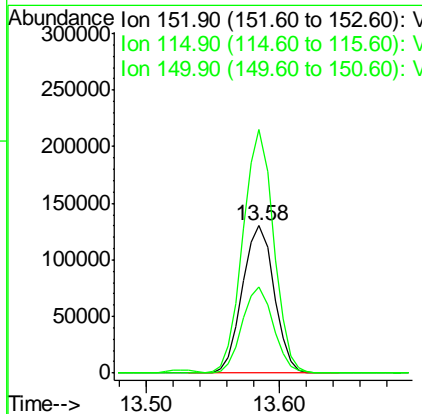
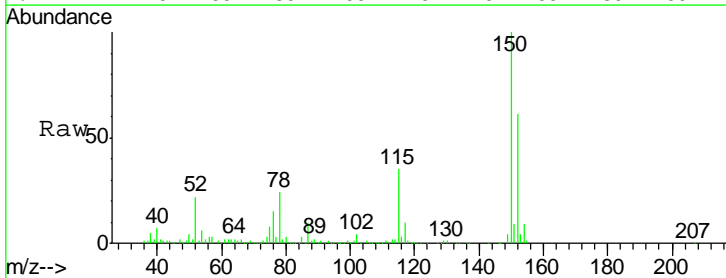
Manual Integrations  
 APPROVED

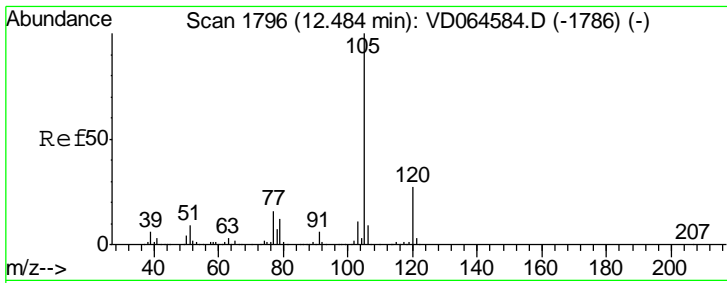
apatel  
 1/6/2020 10:50:17 AM



#72  
 1,4-Dichlorobenzene-d4  
 Concen: 50.000 ug/l  
 RT: 13.58 min Scan# 1983  
 Delta R.T. 0.00 min  
 Lab File: VD064765.D  
 Acq: 04 Jan 2020 07:22

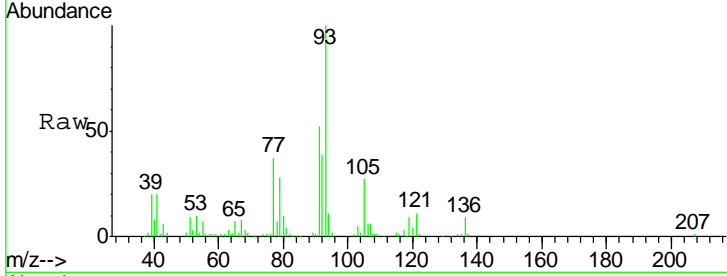
Tgt Ion	Resp	Lower	Upper
152	214809		
152	100		
115	57.8	27.8	83.4
150	159.5	0.0	351.4





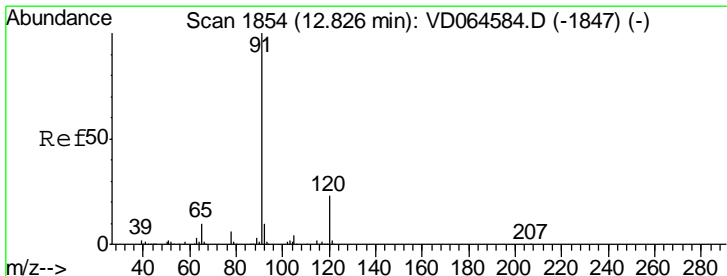
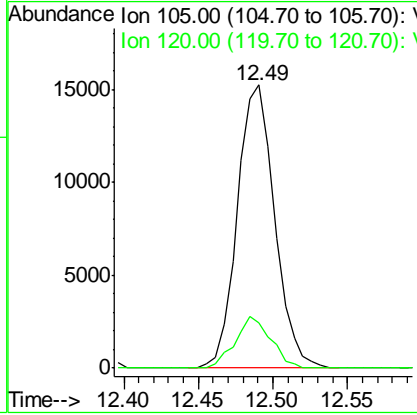
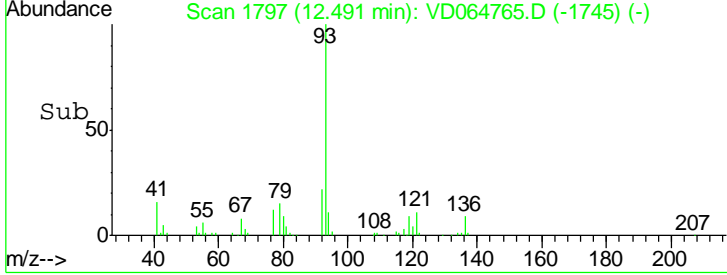
#73  
 Isopropylbenzene  
 Concen: 1.720 ug/l  
 RT: 12.49 min Scan# 1797  
 Delta R.T. 0.01 min  
 Lab File: VD064765.D  
 Acq: 04 Jan 2020 07:22

Instrument : MSVOA\_D  
 ClientSampled : 30544-46-66

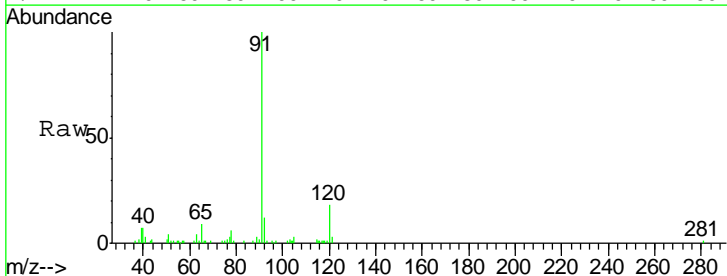


Tgt Ion: 105 Resp: 26409  
 Ion Ratio Lower Upper  
 105 100  
 120 17.1 13.5 40.5

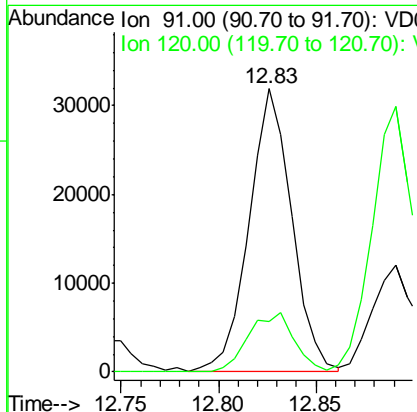
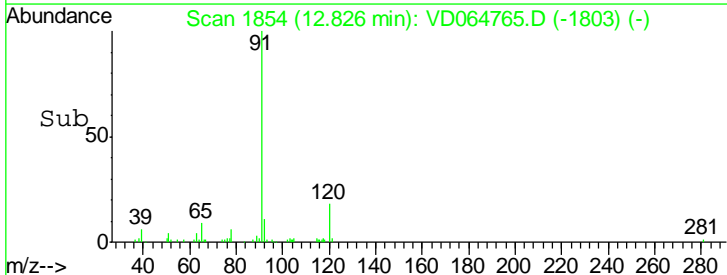
Manual Integrations APPROVED  
 apatel  
 1/6/2020 10:50:17 AM

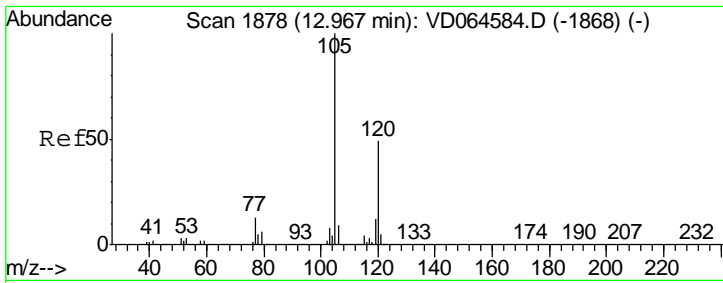


#78  
 n-propylbenzene  
 Concen: 2.701 ug/l  
 RT: 12.83 min Scan# 1854  
 Delta R.T. 0.00 min  
 Lab File: VD064765.D  
 Acq: 04 Jan 2020 07:22



Tgt Ion: 91 Resp: 48375  
 Ion Ratio Lower Upper  
 91 100  
 120 22.4 11.9 35.9





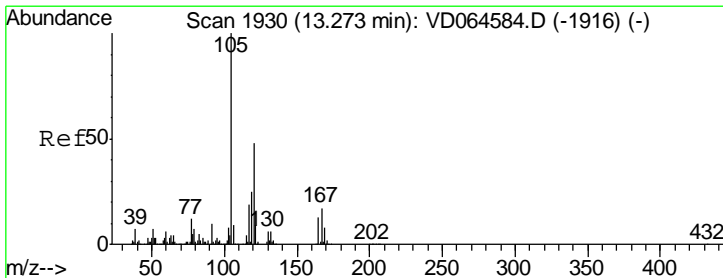
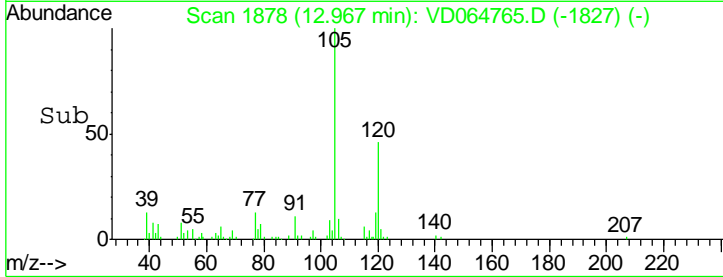
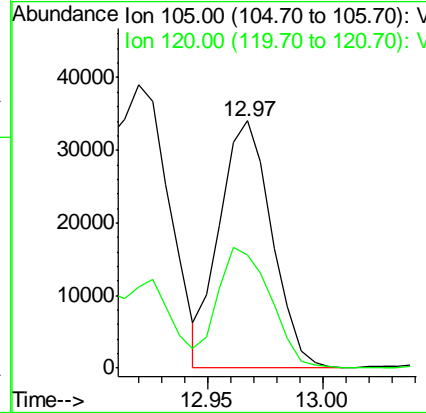
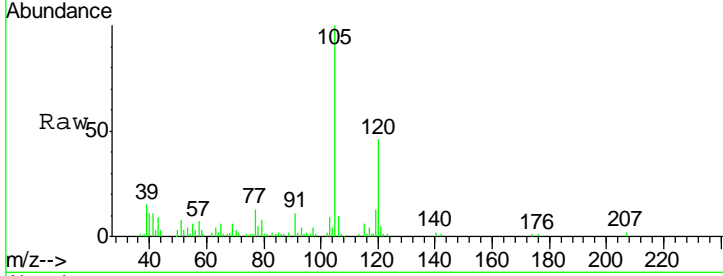
#80  
 1,3,5-Trimethylbenzene  
 Concen: 4.237 ug/l  
 RT: 12.97 min Scan# 1878  
 Delta R.T. 0.00 min  
 Lab File: VD064765.D  
 Acq: 04 Jan 2020 07:22

Instrument :  
 MSVOA\_D  
 ClientSampled :  
 30544-46-66

Tgt Ion	Resp	Lower	Upper
105	100		
120	49.5	25.0	75.0

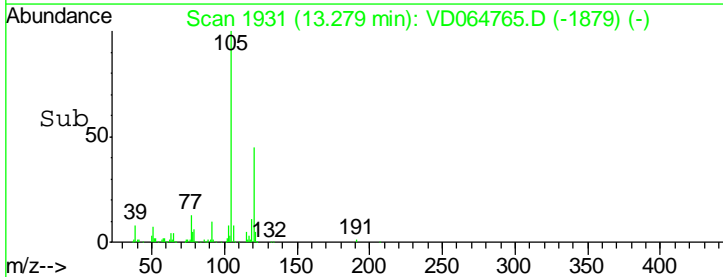
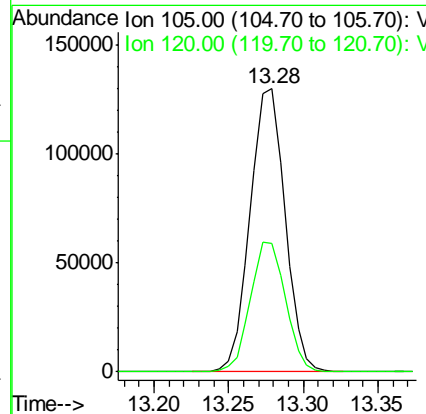
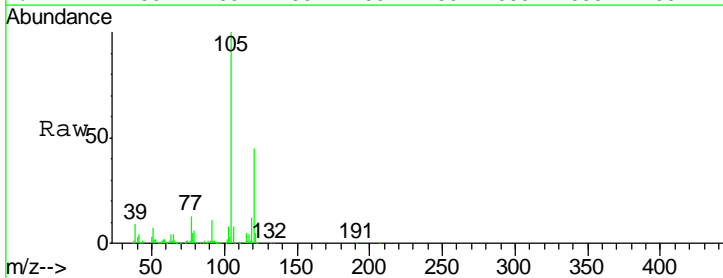
Manual Integrations  
 APPROVED

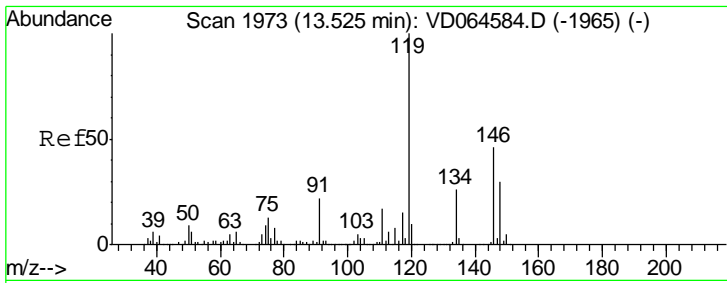
apatel  
 1/6/2020 10:50:17 AM



#84  
 1,2,4-Trimethylbenzene  
 Concen: 16.755 ug/l  
 RT: 13.28 min Scan# 1931  
 Delta R.T. 0.01 min  
 Lab File: VD064765.D  
 Acq: 04 Jan 2020 07:22

Tgt Ion	Resp	Lower	Upper
105	100		
120	46.1	23.8	71.2





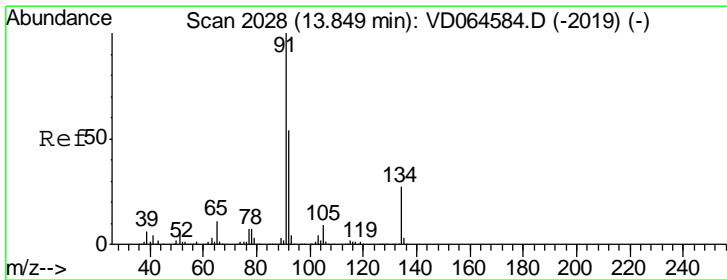
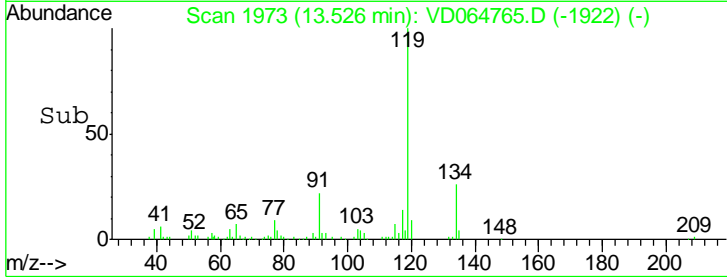
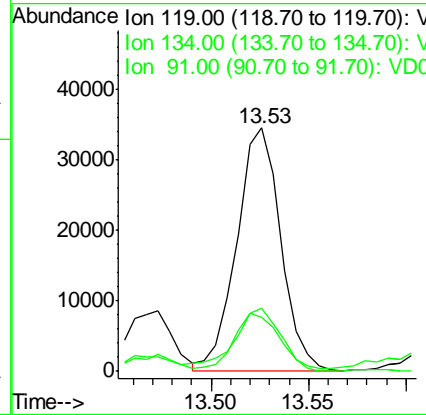
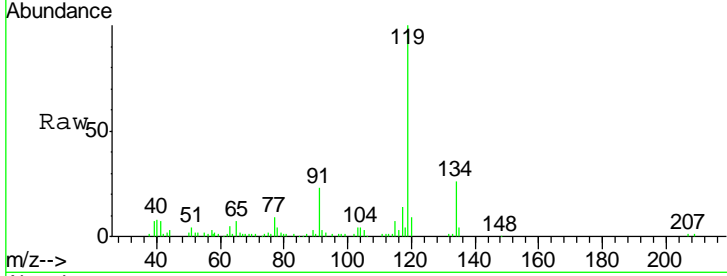
#86  
 p-Isopropyltoluene  
 Concen: 3.774 ug/l  
 RT: 13.53 min Scan# 1973  
 Delta R.T. 0.00 min  
 Lab File: VD064765.D  
 Acq: 04 Jan 2020 07:22

Instrument : MSVOA\_D  
 ClientSampled : 30544-46-66

Tgt Ion	Resp	Lower	Upper
119	54162		
134	26.2	13.4	40.1
91	23.5	11.2	33.6

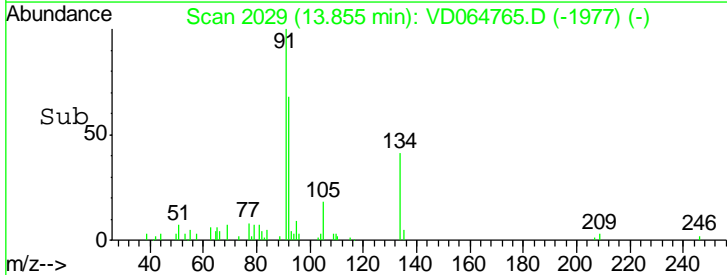
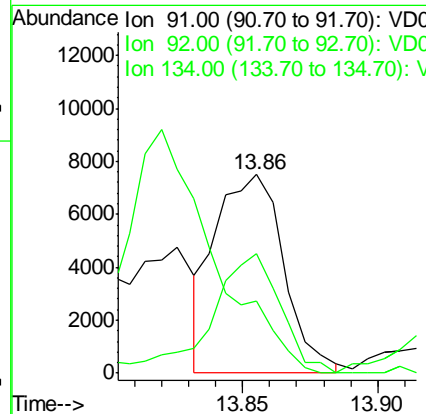
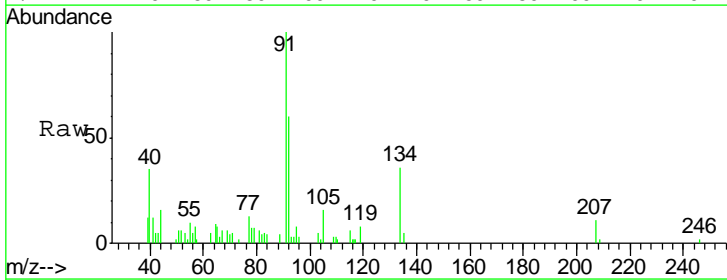
Manual Integrations  
 APPROVED

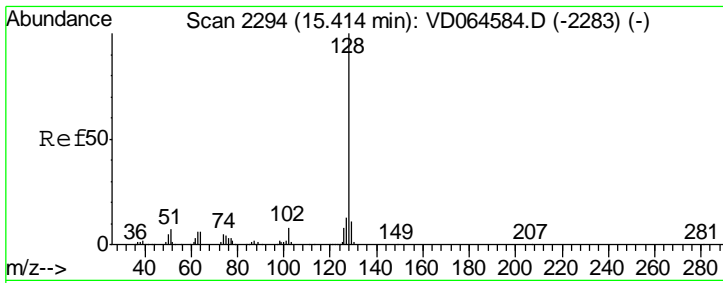
apatel  
 1/6/2020 10:50:17 AM



#89  
 n-Butylbenzene  
 Concen: 1.020 ug/l m  
 RT: 13.86 min Scan# 2029  
 Delta R.T. 0.01 min  
 Lab File: VD064765.D  
 Acq: 04 Jan 2020 07:22

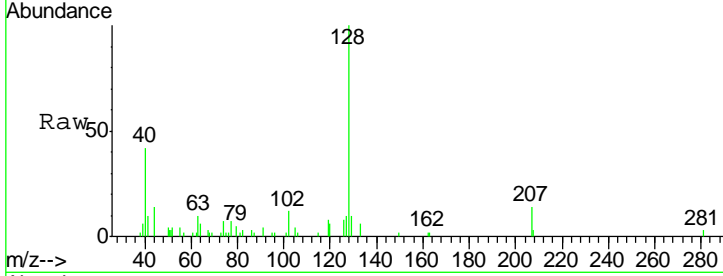
Tgt Ion	Resp	Lower	Upper
91	13181		
92	60.4	26.8	80.4
134	0.0	14.0	41.9#





#95  
 Naphthalene  
 Concen: 2.209 ug/l  
 RT: 15.42 min Scan# 2295  
 Delta R.T. 0.01 min  
 Lab File: VD064765.D  
 Acq: 04 Jan 2020 07:22

**Instrument :**  
 MSVOA\_D  
**ClientSampled :**  
 30544-46-66



Tgt Ion	Resp	Lower	Upper
128	15775		
127	15.0	10.3	15.5
129	14.2	8.5	12.7#

**Manual Integrations**  
**APPROVED**  
 apatel  
 1/6/2020 10:50:17 AM

