

Data Path : Z:\voasrv\HPCHEM1\MSVOA_D\Data\VD010421\
 Data File : VD067992.D
 Acq On : 04 Jan 2021 15:59
 Operator : VA/SY
 Sample : M1006-01
 Misc : 8.25G/5.00ml/MSVOA_D/SOIL
 ALS Vial : 8 Sample Multiplier: 1

Instrument :
 MSVOA_D
 ClientSampleId :
 R-LA-21-5-WC

Quant Time: Jan 05 00:09:14 2021
 Quant Method : Z:\voasrv\HPCHEM1\MSVOA_D\Method\82D122220S.M
 Quant Title : SW846 8260
 QLast Update : Wed Dec 23 07:34:16 2020
 Response via : Initial Calibration

Compound	R.T.	QIon	Response	Conc	Units	Dev(Min)

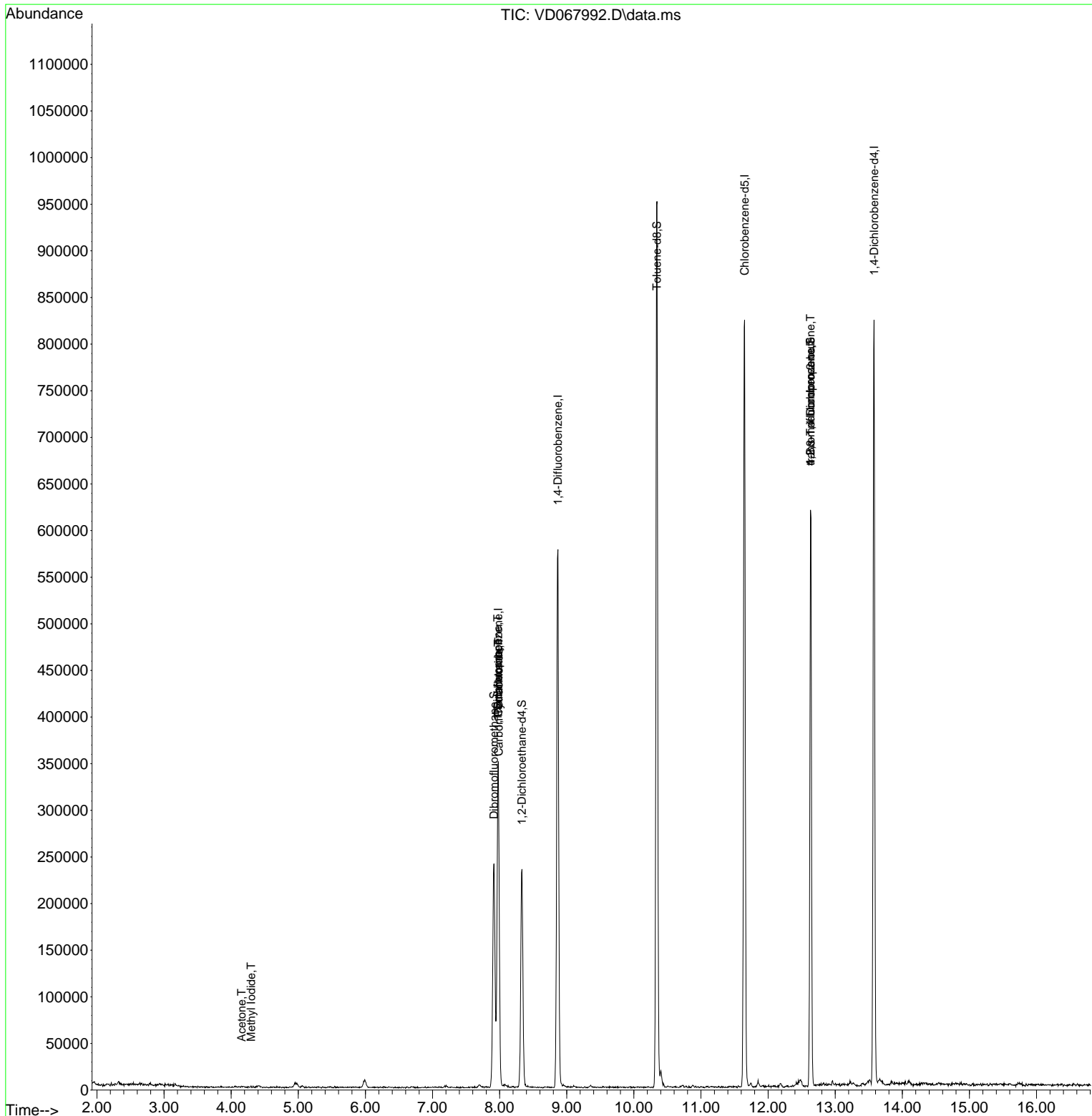
Internal Standards						
1) Pentafluorobenzene	7.979	168	245825	50.00	ug/l	0.00
34) 1,4-Difluorobenzene	8.867	114	493355	50.00	ug/l	0.00
63) Chlorobenzene-d5	11.650	117	476201	50.00	ug/l	0.00
72) 1,4-Dichlorobenzene-d4	13.579	152	209879	50.00	ug/l	0.00
System Monitoring Compounds						
33) 1,2-Dichloroethane-d4	8.332	65	186232	70.16	ug/l	0.00
Spiked Amount	50.000	Range	50 - 163	Recovery	=	140.32%
35) Dibromofluoromethane	7.914	113	174121	56.01	ug/l	0.00
Spiked Amount	50.000	Range	54 - 147	Recovery	=	112.02%
50) Toluene-d8	10.344	98	641675	54.92	ug/l	0.00
Spiked Amount	50.000	Range	49 - 140	Recovery	=	109.84%
62) 4-Bromofluorobenzene	12.632	95	209885	52.51	ug/l	0.00
Spiked Amount	50.000	Range	25 - 144	Recovery	=	105.02%
Target Compounds						
						Qvalue
5) Bromomethane	2.779	94	608	Below Cal		99
10) Methyl Iodide	4.297	142	142	3.90 ug/l #		41
11) Tert butyl alcohol	5.173	59	72	Below Cal #		74
16) Acetone	4.156	43	1340	2.64 ug/l		91
20) Methylene Chloride	4.956	84	4485	Below Cal #		74
31) Cyclohexane	7.979	56	7046	1.30 ug/l #		19
36) 1,1-Dichloropropene	7.973	75	21203	4.04 ug/l #		52
38) Carbon Tetrachloride	7.985	117	26503	5.29 ug/l #		15
76) 1,2,3-Trichloropropane	12.632	75	108173	61.22 ug/l #		100
81) trans-1,4-Dichloro-2-b...	12.632	75	108173	125.48 ug/l #		12

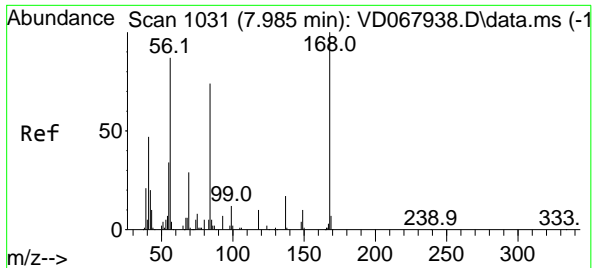
(#) = qualifier out of range (m) = manual integration (+) = signals summed

Data Path : Z:\voasrv\HPCHEM1\MSVOA_D\Data\VD010421\
 Data File : VD067992.D
 Acq On : 04 Jan 2021 15:59
 Operator : VA/SY
 Sample : M1006-01
 Misc : 8.25G/5.00ml/MSVOA_D/SOIL
 ALS Vial : 8 Sample Multiplier: 1

Instrument :
 MSVOA_D
ClientSampled :
 R-LA-21-5-WC

Quant Time: Jan 05 00:09:14 2021
 Quant Method : Z:\voasrv\HPCHEM1\MSVOA_D\Method\82D122220S.M
 Quant Title : SW846 8260
 QLast Update : Wed Dec 23 07:34:16 2020
 Response via : Initial Calibration

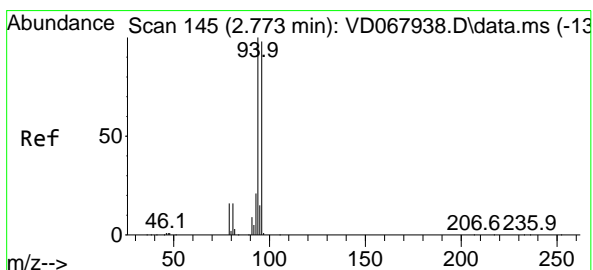
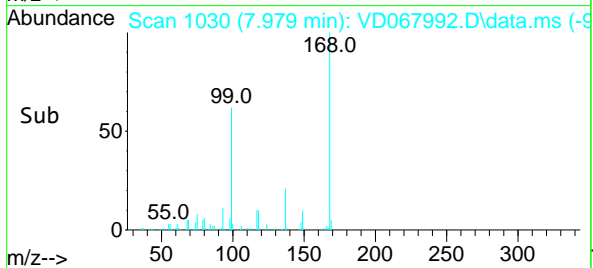
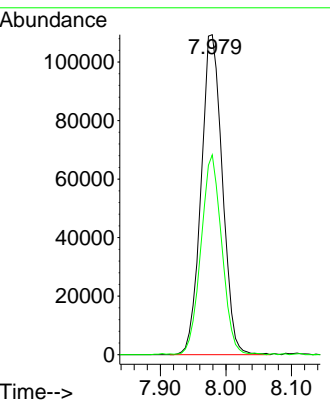
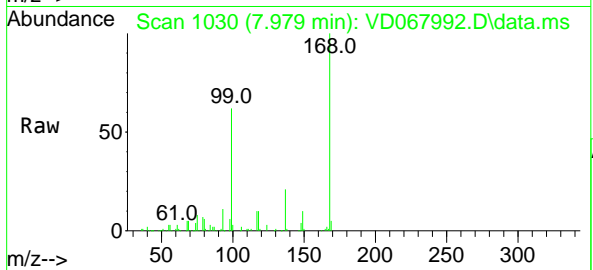




#1
 Pentafluorobenzene
 Concen: 50.00 ug/l
 RT: 7.979 min Scan# 1030
 Delta R.T. -0.006 min
 Lab File: VD067992.D
 Acq: 04 Jan 2021 15:59

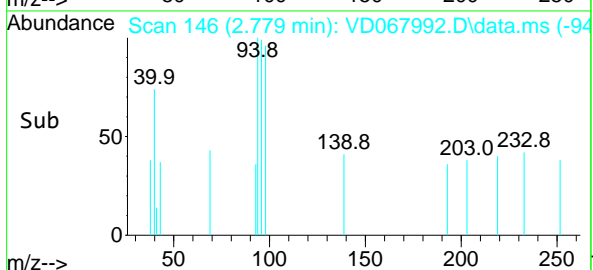
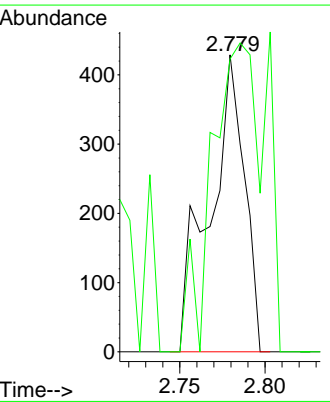
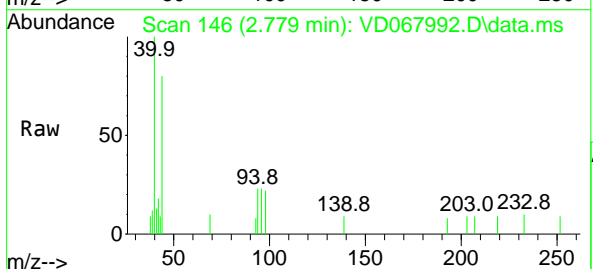
Instrument :
 MSVOA_D
ClientSampled :
 R-LA-21-5-WC

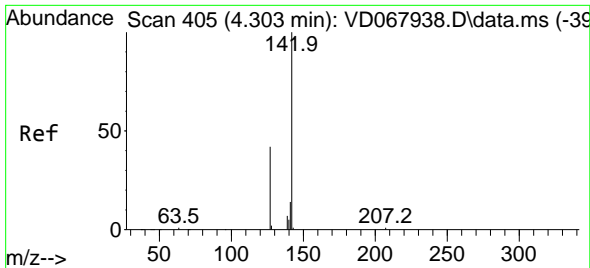
Tgt Ion:168 Resp: 245825
 Ion Ratio Lower Upper
 168 100
 99 62.3 48.0 72.0



#5
 Bromomethane
 Concen: Below Cal
 RT: 2.779 min Scan# 146
 Delta R.T. 0.006 min
 Lab File: VD067992.D
 Acq: 04 Jan 2021 15:59

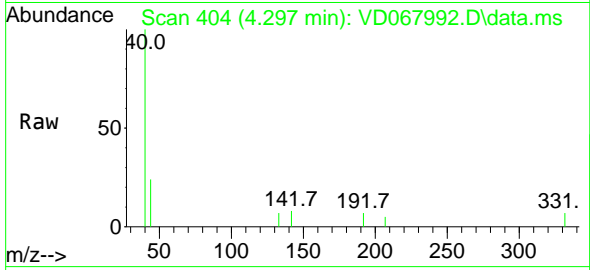
Tgt Ion: 94 Resp: 608
 Ion Ratio Lower Upper
 94 100
 96 98.6 78.0 117.0



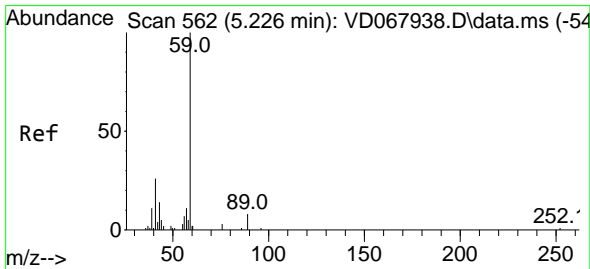
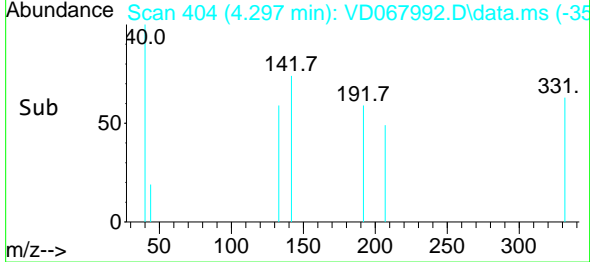
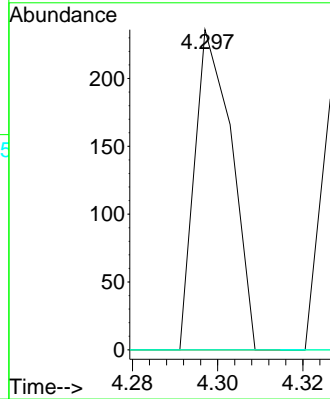


#10
Methyl Iodide
Concen: 3.90 ug/l
RT: 4.297 min Scan# 404
Delta R.T. -0.006 min
Lab File: VD067992.D
Acq: 04 Jan 2021 15:59

Instrument :
MSVOA_D
ClientSampled :
R-LA-21-5-WC

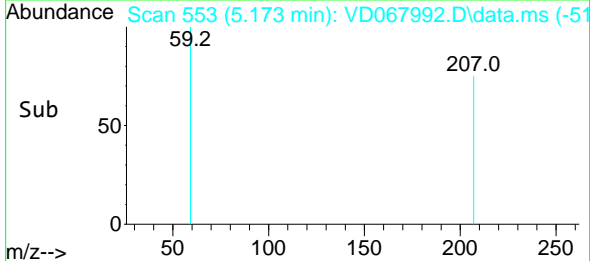
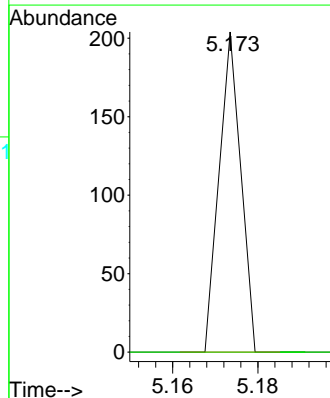
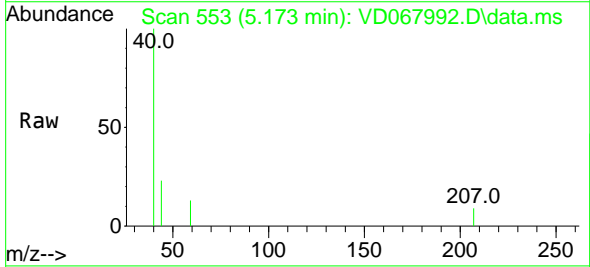


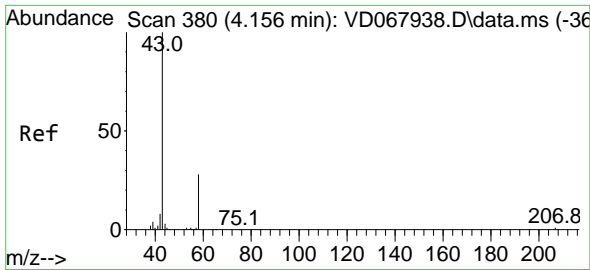
Tgt Ion:142 Resp: 142
Ion Ratio Lower Upper
142 100
127 0.0 34.4 51.6#
141 0.0 11.8 17.8#



#11
Tert butyl alcohol
Concen: Below Cal
RT: 5.173 min Scan# 553
Delta R.T. -0.053 min
Lab File: VD067992.D
Acq: 04 Jan 2021 15:59

Tgt Ion: 59 Resp: 72
Ion Ratio Lower Upper
59 100
57 0.0 7.4 11.2#

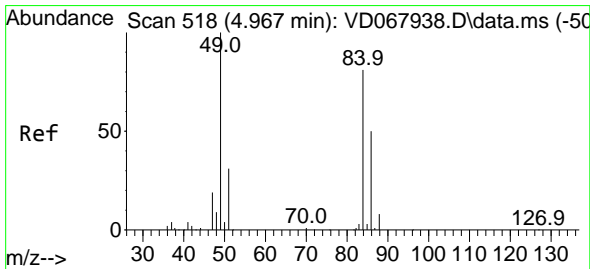
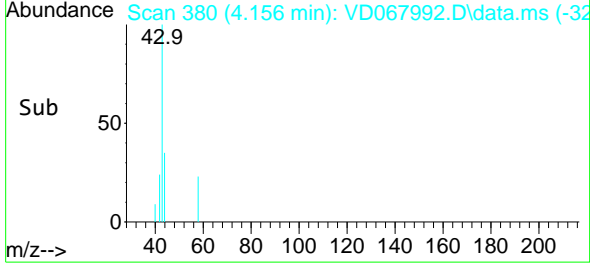
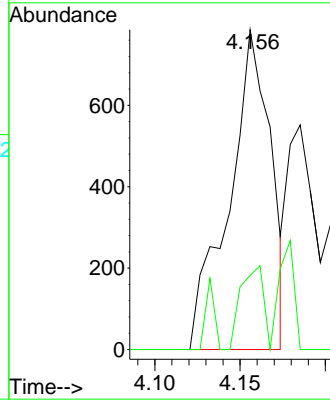
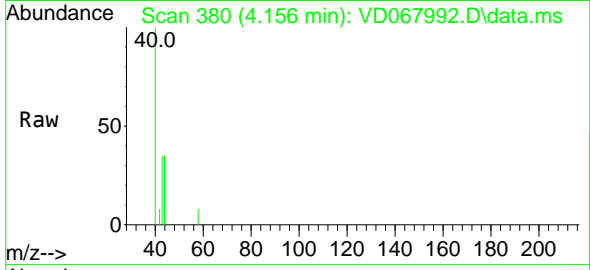




#16
 Acetone
 Concen: 2.64 ug/l
 RT: 4.156 min Scan# 380
 Delta R.T. 0.000 min
 Lab File: VD067992.D
 Acq: 04 Jan 2021 15:59

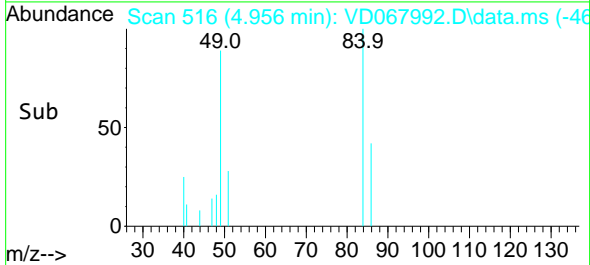
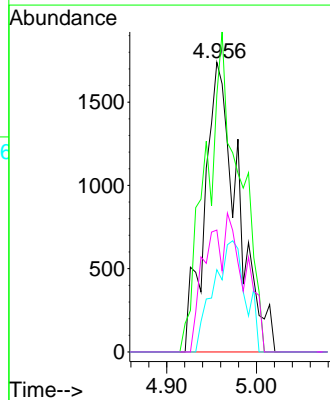
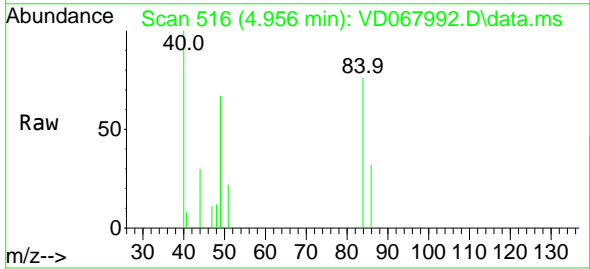
Instrument :
 MSVOA_D
 ClientSampleId :
 R-LA-21-5-WC

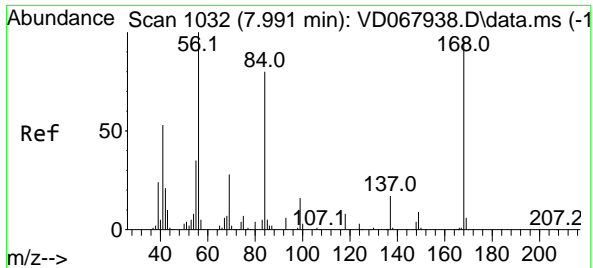
Tgt Ion	Resp	Lower	Upper
43	1340		
58	23.2	22.3	33.5



#20
 Methylene Chloride
 Concen: Below Cal
 RT: 4.956 min Scan# 516
 Delta R.T. -0.011 min
 Lab File: VD067992.D
 Acq: 04 Jan 2021 15:59

Tgt Ion	Resp	Lower	Upper
84	4485		
49	88.8	98.3	147.5#
51	28.4	30.3	45.5#
86	42.1	49.0	73.4#

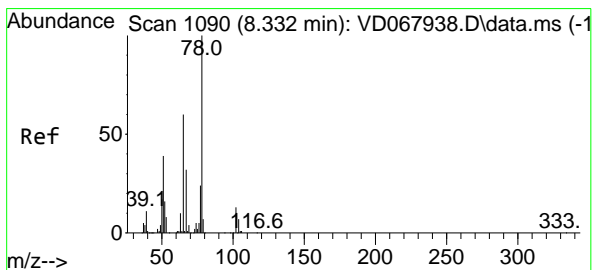
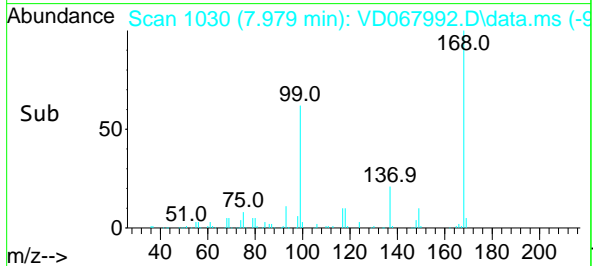
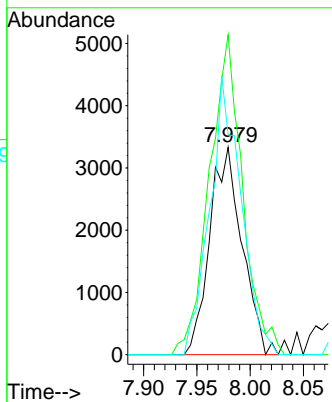
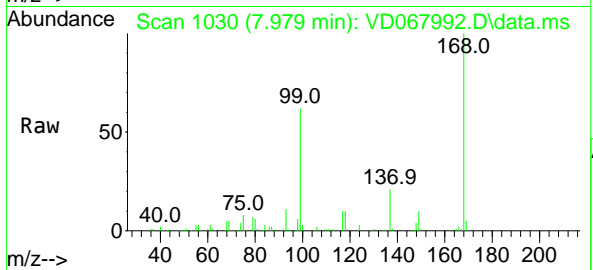




#31
 Cyclohexane
 Concen: 1.30 ug/l
 RT: 7.979 min Scan# 1030
 Delta R.T. -0.012 min
 Lab File: VD067992.D
 Acq: 04 Jan 2021 15:59

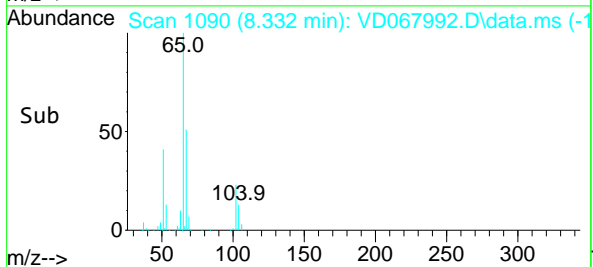
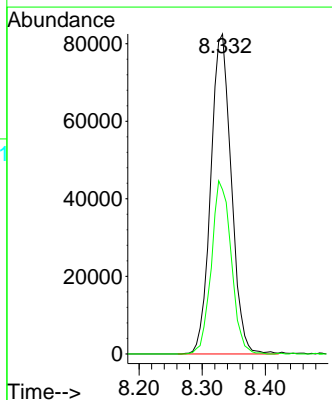
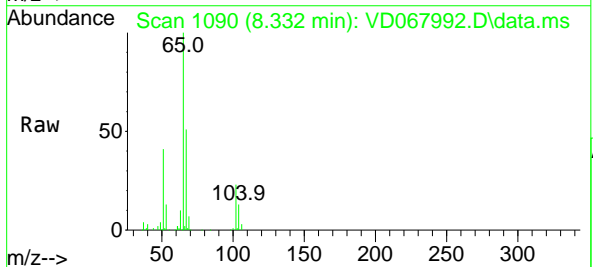
Instrument :
 MSVOA_D
 ClientSampled :
 R-LA-21-5-WC

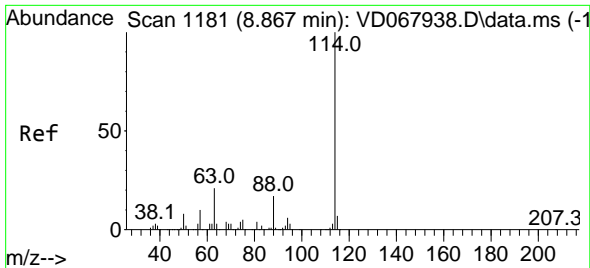
Tgt Ion	Resp	Lower	Upper
56	7046		
69	149.5	22.7	34.1#
84	105.9	64.2	96.4#



#33
 1,2-Dichloroethane-d4
 Concen: 70.16 ug/l
 RT: 8.332 min Scan# 1090
 Delta R.T. 0.000 min
 Lab File: VD067992.D
 Acq: 04 Jan 2021 15:59

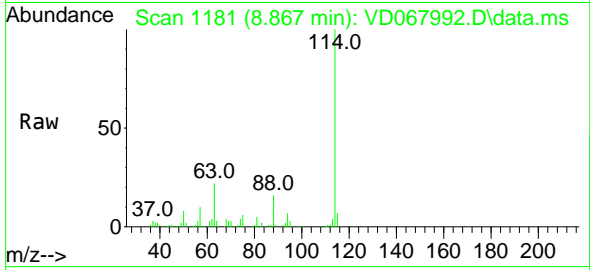
Tgt Ion	Resp	Lower	Upper
65	186232		
67	52.3	0.0	110.0





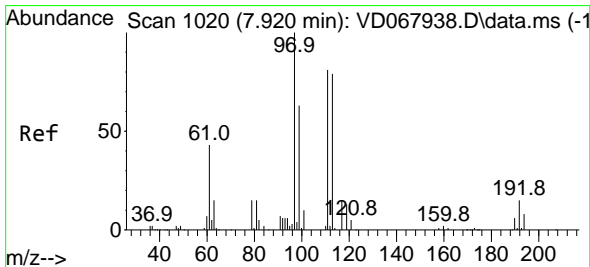
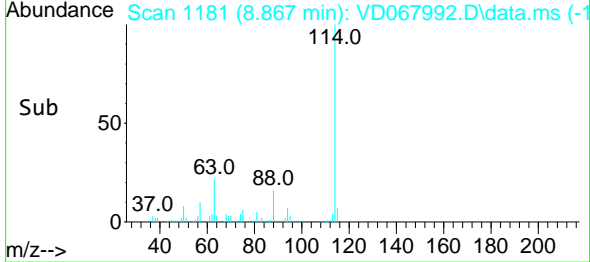
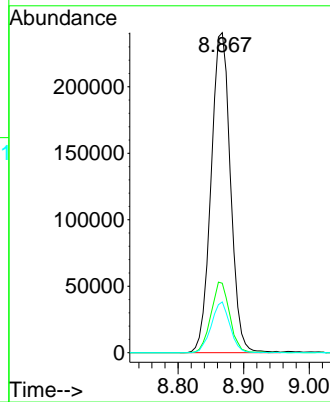
#34
 1,4-Difluorobenzene
 Concen: 50.00 ug/l
 RT: 8.867 min Scan# 1181
 Delta R.T. 0.000 min
 Lab File: VD067992.D
 Acq: 04 Jan 2021 15:59

Instrument : MSVOA_D
 ClientSampleId : R-LA-21-5-WC

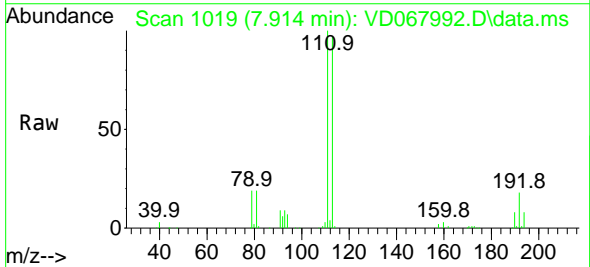


Tgt Ion:114 Resp: 493355

Ion	Ratio	Lower	Upper
114	100		
63	21.7	0.0	41.4
88	15.8	0.0	33.2

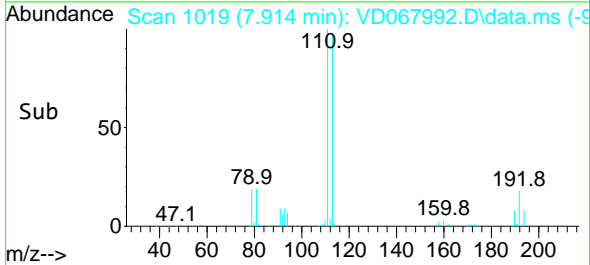
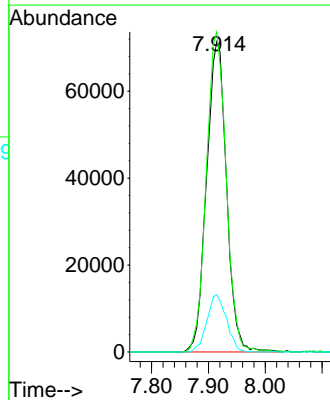


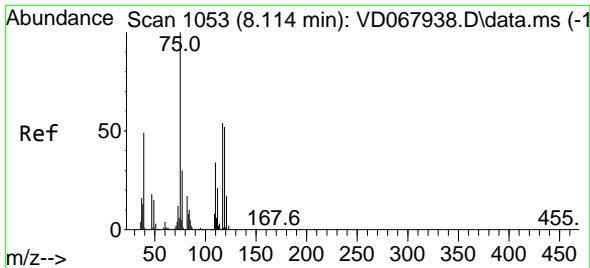
#35
 Dibromofluoromethane
 Concen: 56.01 ug/l
 RT: 7.914 min Scan# 1019
 Delta R.T. -0.006 min
 Lab File: VD067992.D
 Acq: 04 Jan 2021 15:59



Tgt Ion:113 Resp: 174121

Ion	Ratio	Lower	Upper
113	100		
111	102.4	79.3	118.9
192	18.1	14.5	21.7

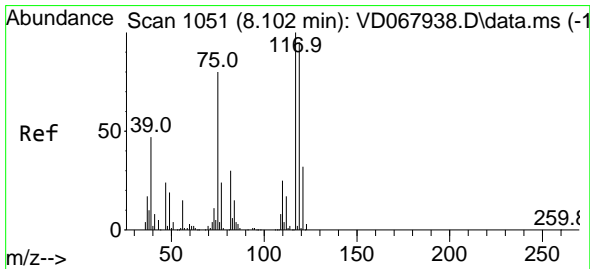
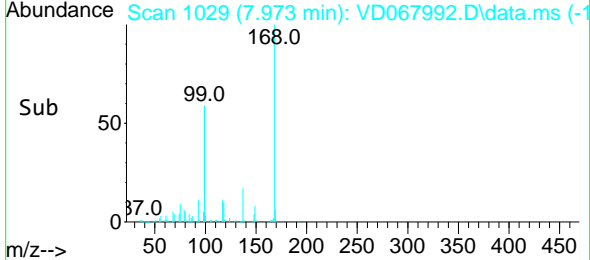
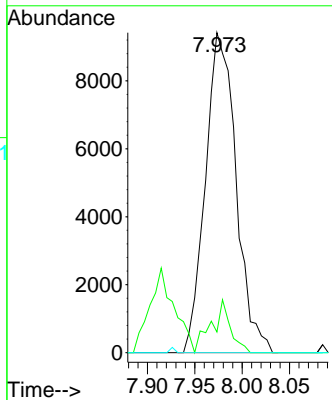
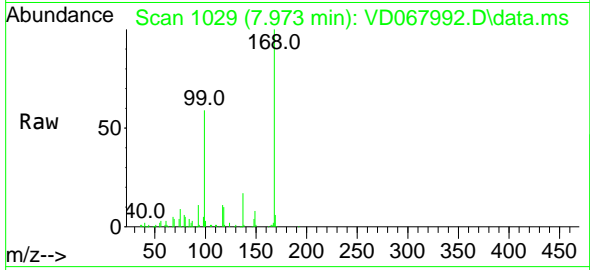




#36
 1,1-Dichloropropene
 Concen: 4.04 ug/l
 RT: 7.973 min Scan# 1029
 Delta R.T. -0.141 min
 Lab File: VD067992.D
 Acq: 04 Jan 2021 15:59

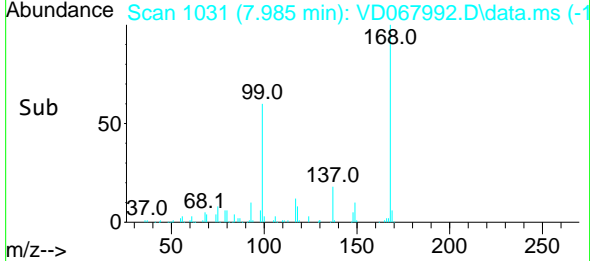
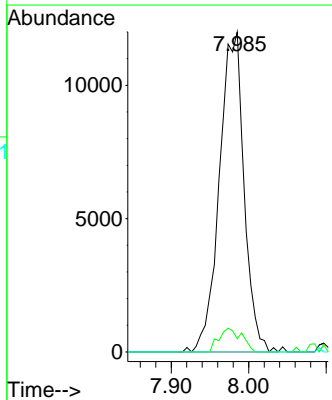
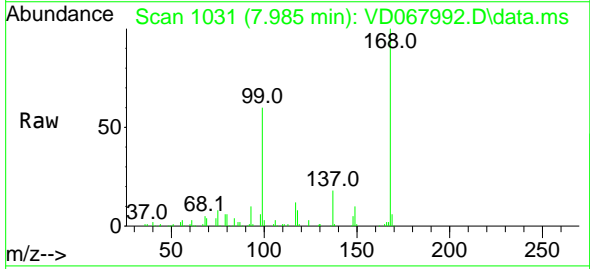
Instrument :
 MSVOA_D
ClientSampled :
 R-LA-21-5-WC

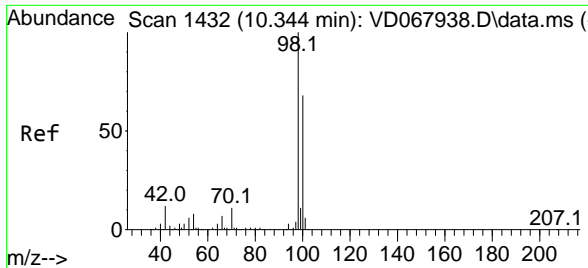
Tgt Ion	Resp	Lower	Upper
75	100		
110	10.3	17.0	51.0#
77	0.0	24.6	37.0#



#38
 Carbon Tetrachloride
 Concen: 5.29 ug/l
 RT: 7.985 min Scan# 1031
 Delta R.T. -0.117 min
 Lab File: VD067992.D
 Acq: 04 Jan 2021 15:59

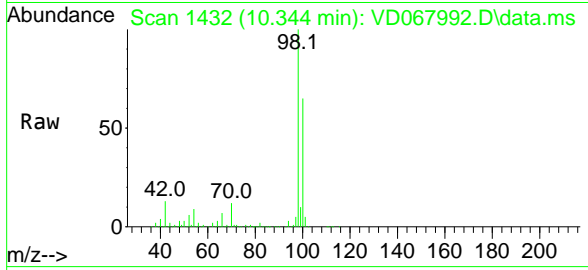
Tgt Ion	Resp	Lower	Upper
117	100		
119	4.2	76.2	114.4#
121	0.0	25.9	38.9#



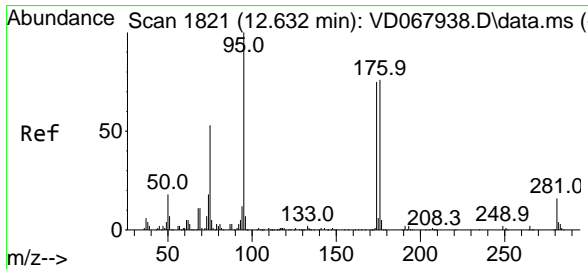
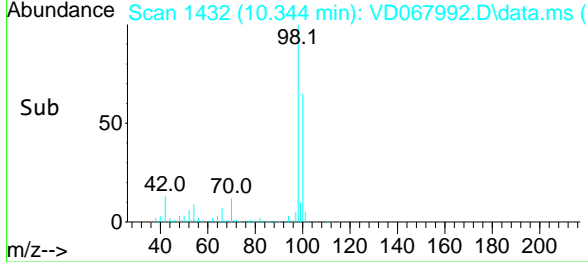
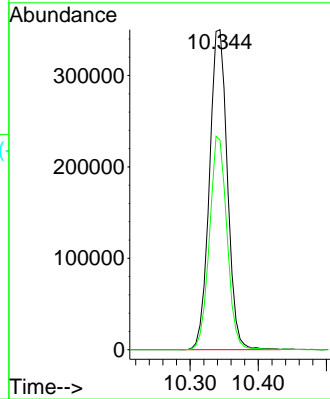


#50
 Toluene-d8
 Concen: 54.92 ug/l
 RT: 10.344 min Scan# 1432
 Delta R.T. 0.000 min
 Lab File: VD067992.D
 Acq: 04 Jan 2021 15:59

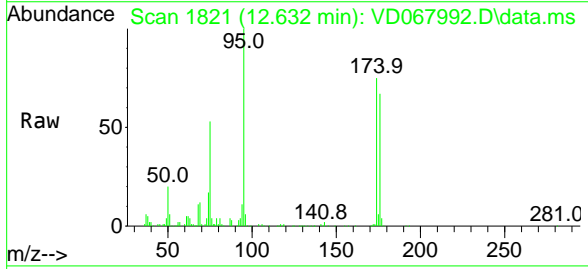
Instrument :
 MSVOA_D
 ClientSampleId :
 R-LA-21-5-WC



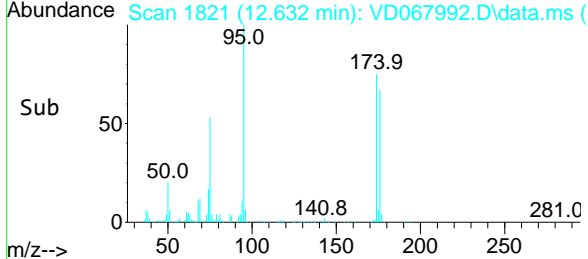
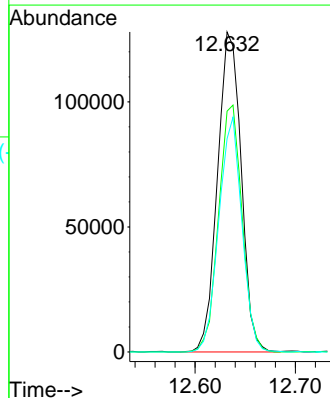
Tgt Ion: 98 Resp: 641675
 Ion Ratio Lower Upper
 98 100
 100 65.1 52.5 78.7

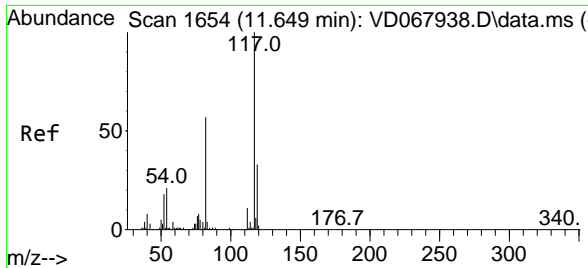


#62
 4-Bromofluorobenzene
 Concen: 52.51 ug/l
 RT: 12.632 min Scan# 1821
 Delta R.T. 0.000 min
 Lab File: VD067992.D
 Acq: 04 Jan 2021 15:59



Tgt Ion: 95 Resp: 209885
 Ion Ratio Lower Upper
 95 100
 174 76.6 0.0 150.6
 176 71.5 0.0 151.2



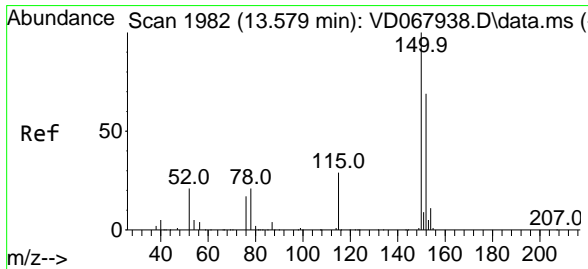
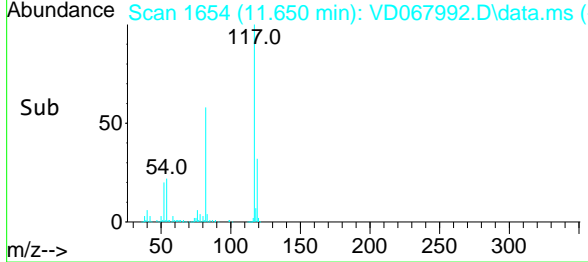
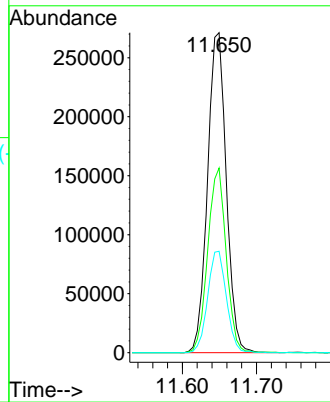
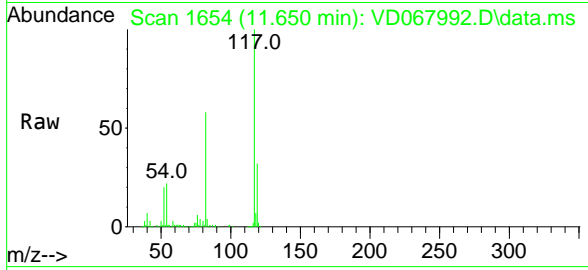


#63
 Chlorobenzene-d5
 Concen: 50.00 ug/l
 RT: 11.650 min Scan# 1654
 Delta R.T. 0.000 min
 Lab File: VD067992.D
 Acq: 04 Jan 2021 15:59

Instrument :
 MSVOA_D
 ClientSampled :
 R-LA-21-5-WC

Tgt Ion:117 Resp: 476201

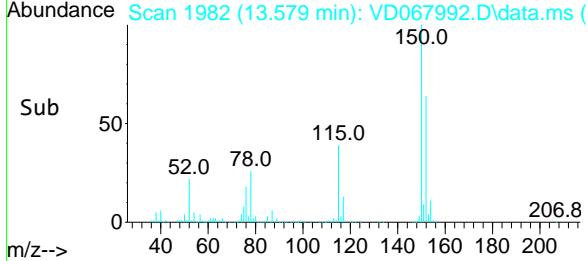
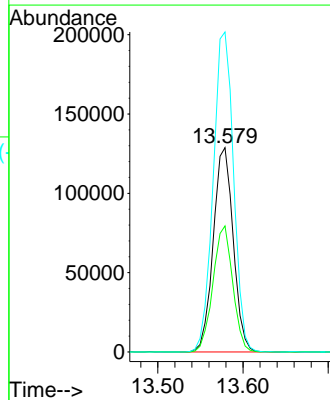
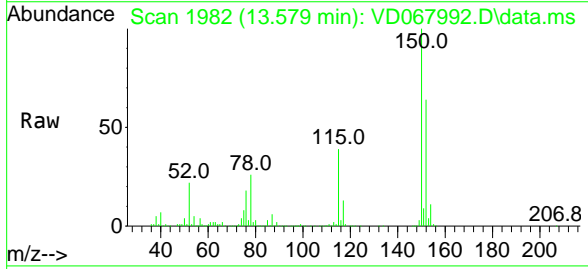
Ion	Ratio	Lower	Upper
117	100		
82	57.7	45.4	68.0
119	31.7	26.7	40.1

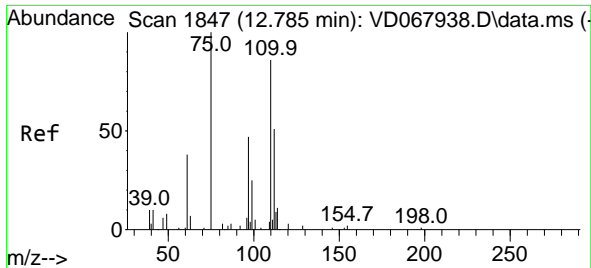


#72
 1,4-Dichlorobenzene-d4
 Concen: 50.00 ug/l
 RT: 13.579 min Scan# 1982
 Delta R.T. 0.000 min
 Lab File: VD067992.D
 Acq: 04 Jan 2021 15:59

Tgt Ion:152 Resp: 209879

Ion	Ratio	Lower	Upper
152	100		
115	61.0	29.3	88.0
150	159.5	0.0	340.0

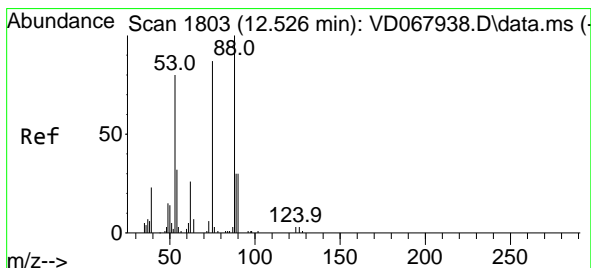
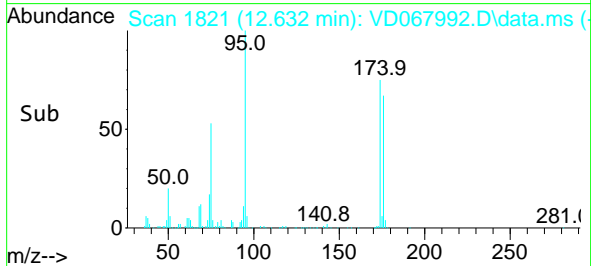
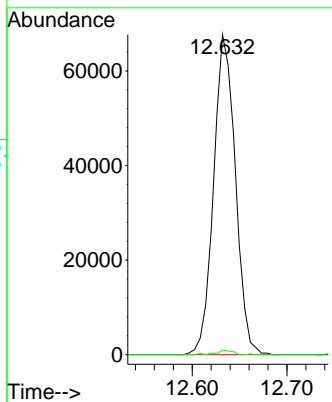
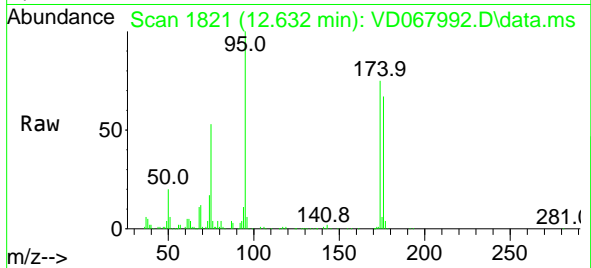




#76
 1,2,3-Trichloropropane
 Concen: 61.22 ug/l
 RT: 12.632 min Scan# 1821
 Delta R.T. -0.153 min
 Lab File: VD067992.D
 Acq: 04 Jan 2021 15:59

Instrument :
 MSVOA_D
 ClientSampled :
 R-LA-21-5-WC

Tgt Ion: 75 Resp: 108173
 Ion Ratio Lower Upper
 75 100
 77 1.1 0.0 0.0#



#81
 trans-1,4-Dichloro-2-butene
 Concen: 125.48 ug/l
 RT: 12.632 min Scan# 1821
 Delta R.T. 0.106 min
 Lab File: VD067992.D
 Acq: 04 Jan 2021 15:59

Tgt Ion: 75 Resp: 108173
 Ion Ratio Lower Upper
 75 100
 53 0.1 74.9 112.3#
 89 0.0 33.8 50.8#

