

Data Path : Z:\voasrv\HPCHEM1\MSVOA_D\Data\VD010522\
 Data File : VD071618.D
 Acq On : 05 Jan 2022 17:05
 Operator : VA/SY
 Sample : N1018-01
 Misc : 6.04G/5.00ml/MSVOA_D/SOIL
 ALS Vial : 1 Sample Multiplier: 1

Instrument :
 MSVOA_D
 ClientSampleId :
 FM-A4-A41-01-4.5

Integration Parameters: RTEINT.P

Integrator: RTE
 Smoothing : ON Filtering: 5
 Sampling : 1 Min Area: 3 % of largest Peak
 Start Thrs: 0.2 Max Peaks: 100
 Stop Thrs : 0 Peak Location: TOP

If leading or trailing edge < 100 prefer < Baseline drop else tangent >
 Peak separation: 5

Method : Z:\voasrv\HPCHEM1\MSVOA_D\Method\82D122221S.M
 Title : SW846 8260

Signal : TIC: VD071618.D\data.ms

peak #	R.T. min	first scan	max scan	last scan	PK TY	peak height	corr. area	corr. % max.	% of total
1	4.968	507	518	530	rVB	57326	185795	9.38%	1.744%
2	5.997	685	693	701	rVB5	9324	25655	1.30%	0.241%
3	7.914	1009	1019	1024	rBV	261724	630738	31.85%	5.922%
4	7.979	1024	1030	1043	rVB	457610	1023752	51.70%	9.612%
5	8.326	1073	1089	1099	rBV2	273900	757701	38.27%	7.114%
6	8.861	1170	1180	1192	rBV	708938	1424675	71.95%	13.376%
7	10.338	1422	1431	1443	rBV	1074372	1980088	100.00%	18.590%
8	10.720	1490	1496	1503	rVB2	25252	48705	2.46%	0.457%
9	11.079	1551	1557	1564	rVB5	14716	24702	1.25%	0.232%
10	11.455	1614	1621	1629	rVB3	17463	33113	1.67%	0.311%
11	11.638	1644	1652	1665	rVB	975573	1699055	85.81%	15.952%
12	12.626	1811	1820	1828	rBV	775935	1294880	65.40%	12.157%
13	13.567	1972	1980	1991	rBV	911026	1522338	76.88%	14.293%

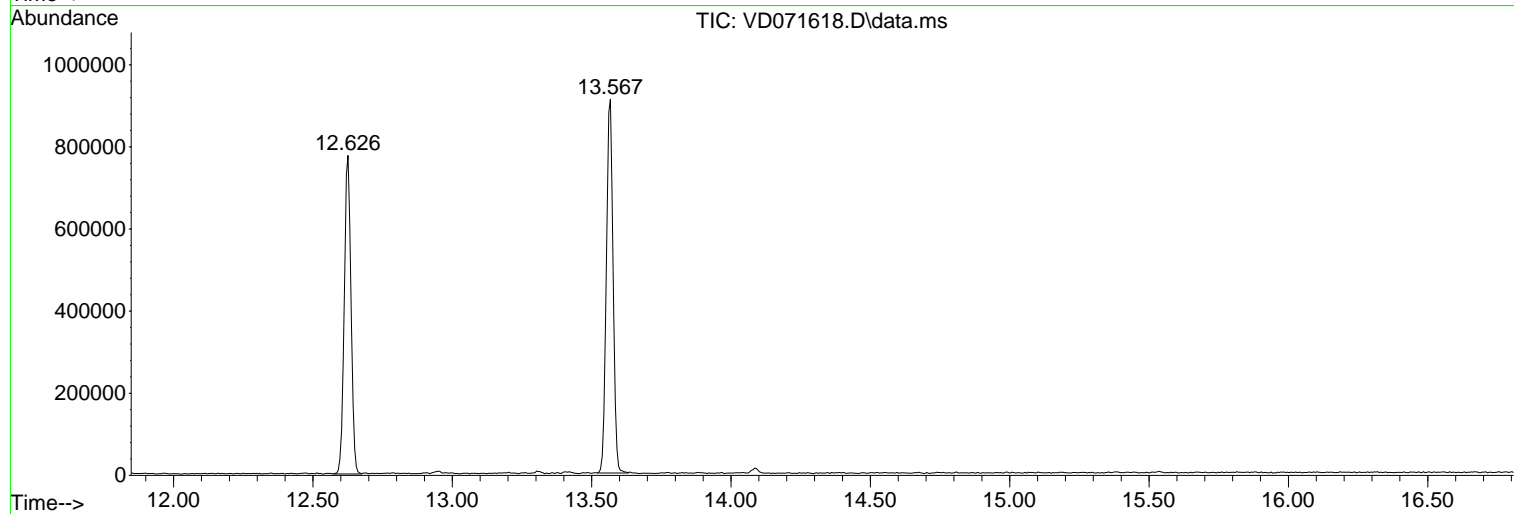
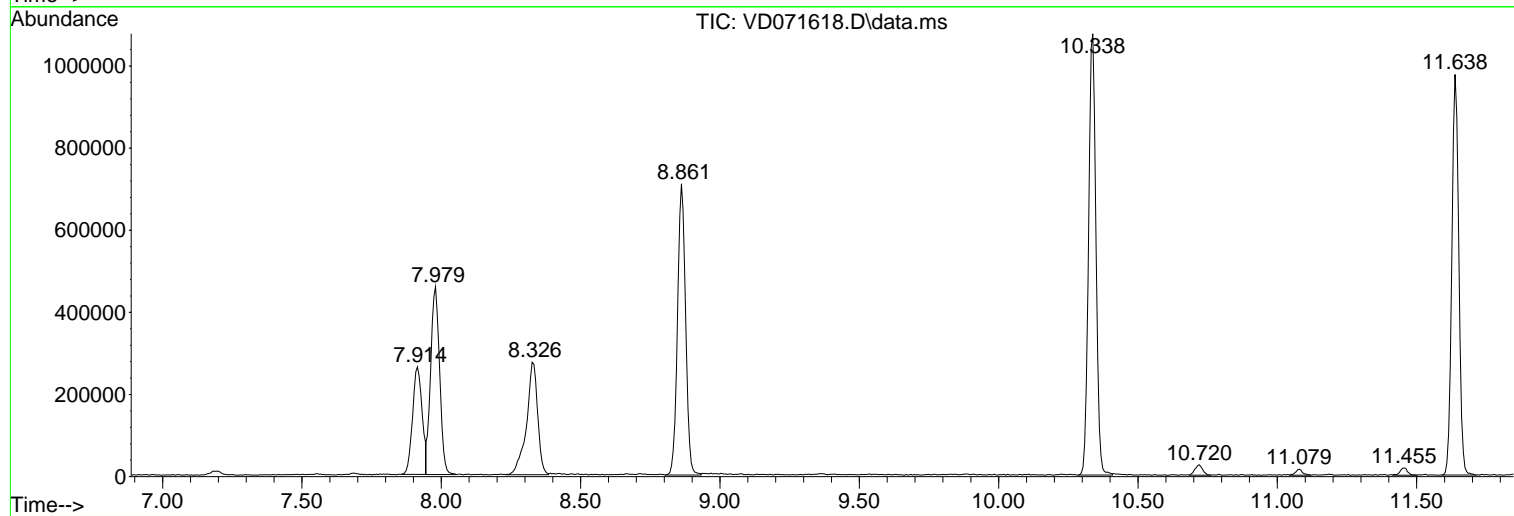
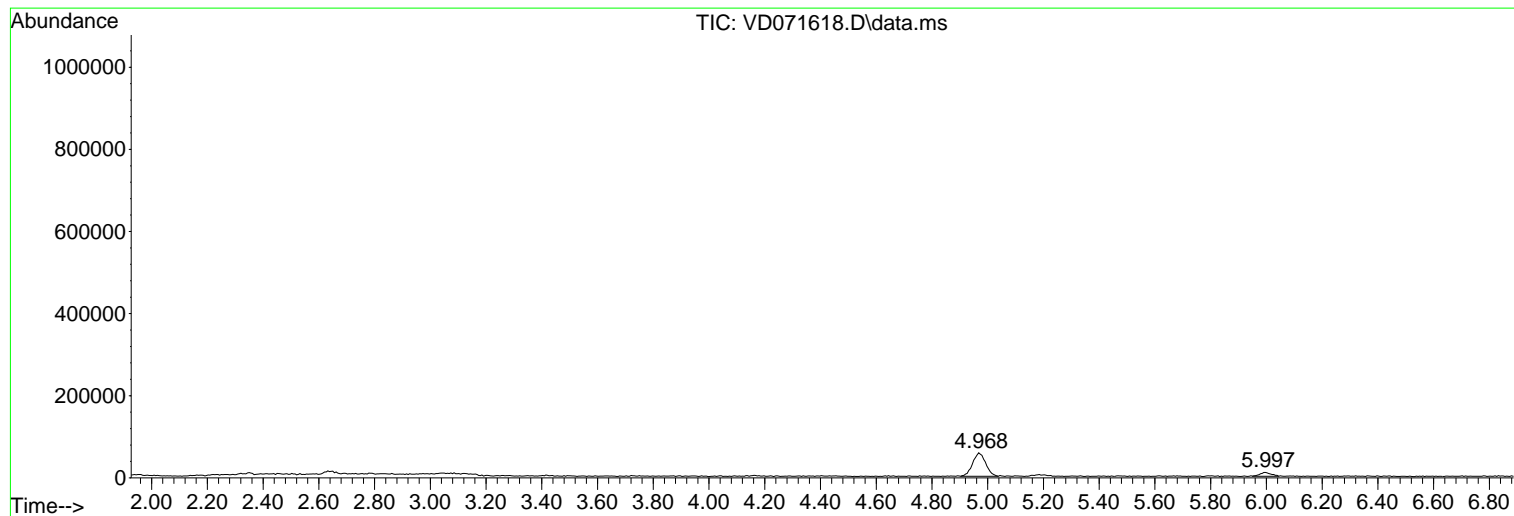
Sum of corrected areas: 10651197

Data Path : Z:\voasrv\HPCHEM1\MSVOA_D\Data\VD010522\
Data File : VD071618.D
Acq On : 05 Jan 2022 17:05
Operator : VA/SY
Sample : N1018-01
Misc : 6.04G/5.00ml/MSVOA_D/SOIL
ALS Vial : 1 Sample Multiplier: 1

Instrument :
MSVOA_D
ClientSampleId :
FM-A4-A41-01-4.5

Quant Method : Z:\voasrv\HPCHEM1\MSVOA_D\Method\82D122221S.M
Quant Title : SW846 8260

TIC Library : C:\Database\NIST20.L
TIC Integration Parameters: LSCINT.P



Library Search Compound Report

Data Path : Z:\voasrv\HPCHEM1\MSVOA_D\Data\VD010522\
Data File : VD071618.D
Acq On : 05 Jan 2022 17:05
Operator : VA/SY
Sample : N1018-01
Misc : 6.04G/5.00ml/MSVOA_D/SOIL
ALS Vial : 1 Sample Multiplier: 1

Instrument :
MSVOA_D
ClientSampleId :
FM-A4-A41-01-4.5

Quant Method : Z:\voasrv\HPCHEM1\MSVOA_D\Method\82D122221S.M
Quant Title : SW846 8260

TIC Library : C:\Database\NIST20.L
TIC Integration Parameters: LSCINT.P

No Library Search Compounds Detected

Data Path : Z:\voasrv\HPCHEM1\MSVOA_D\Data\VD010522\
Data File : VD071618.D
Acq On : 05 Jan 2022 17:05
Operator : VA/SY
Sample : N1018-01
Misc : 6.04G/5.00ml/MSVOA_D/SOIL
ALS Vial : 1 Sample Multiplier: 1

Instrument :
MSVOA_D
ClientSampleId :
FM-A4-A41-01-4.5

Quant Method : Z:\voasrv\HPCHEM1\MSVOA_D\Method\82D122221S.M
Quant Title : SW846 8260

TIC Library : C:\Database\NIST20.L
TIC Integration Parameters: LSCINT.P

TIC Top Hit name	RT	EstConc	Units	Response	--Internal Standard--			
					#	RT	Resp	Conc
