

Data Path : Z:\voasrv\HPCHEM1\MSVOA_D\Data\VD011921\
 Data File : VD068092.D
 Acq On : 19 Jan 2021 16:05
 Operator : VA/SY
 Sample : M1146-01
 Misc : 4.68G/5.00ml/MSVOA_D/SOIL
 ALS Vial : 15 Sample Multiplier: 1

Instrument :
 MSVOA_D
 ClientSampled :
 520-Z

Quant Time: Jan 19 16:45:09 2021
 Quant Method : Z:\voasrv\HPCHEM1\MSVOA_D\Method\82D011921S.M
 Quant Title : SW846 8260
 QLast Update : Tue Jan 19 13:19:08 2021
 Response via : Initial Calibration

Compound	R.T.	QIon	Response	Conc	Units	Dev(Min)

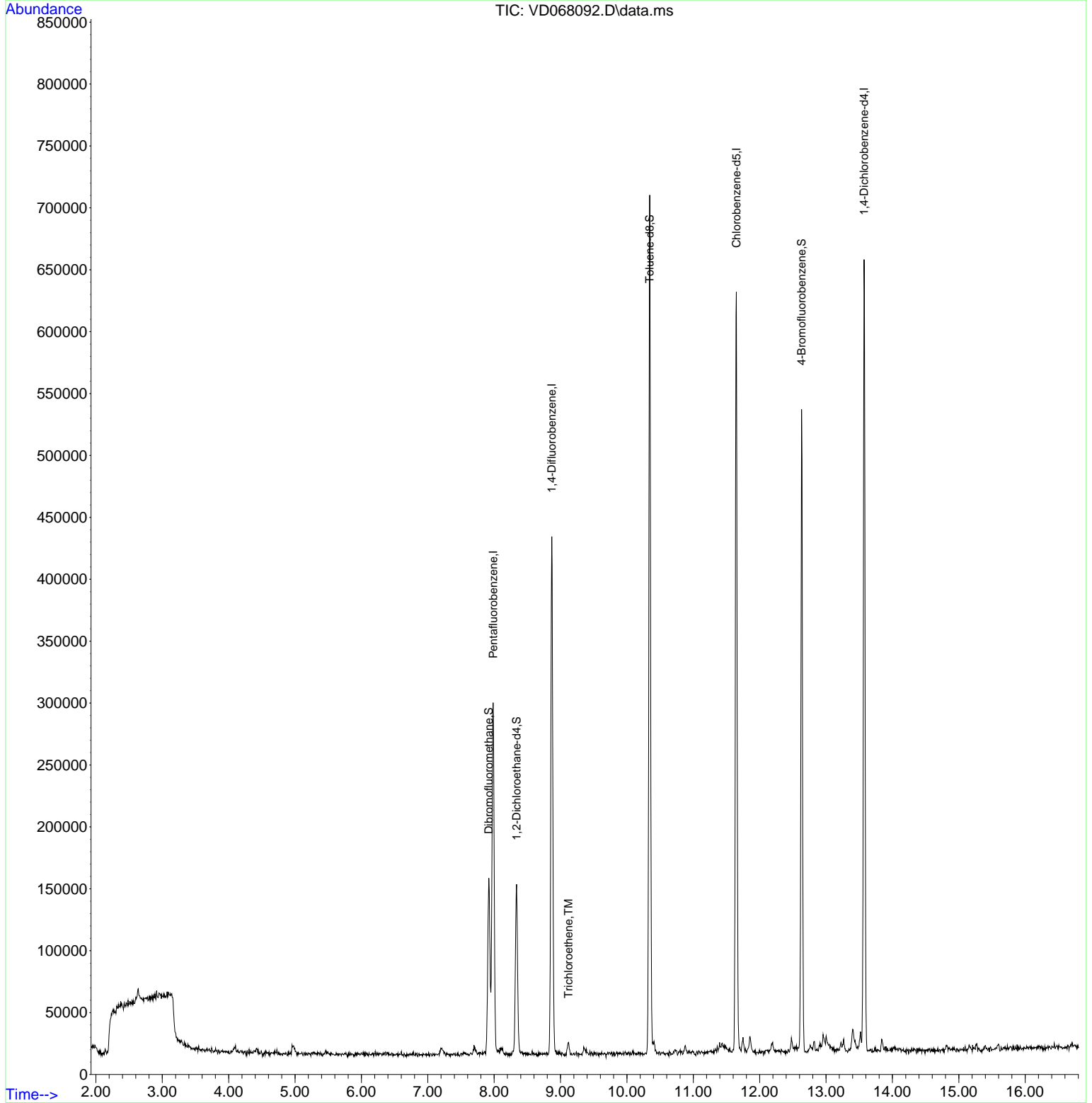
Internal Standards						
1) Pentafluorobenzene	7.985	168	215070	50.00	ug/l	0.00
34) 1,4-Difluorobenzene	8.867	114	372649	50.00	ug/l	0.00
63) Chlorobenzene-d5	11.649	117	360538	50.00	ug/l	0.00
72) 1,4-Dichlorobenzene-d4	13.573	152	173782	50.00	ug/l	0.00
System Monitoring Compounds						
33) 1,2-Dichloroethane-d4	8.338	65	109535	53.24	ug/l	0.00
Spiked Amount	50.000	Range	50 - 163	Recovery	=	106.48%
35) Dibromofluoromethane	7.920	113	100727	48.89	ug/l	0.00
Spiked Amount	50.000	Range	54 - 147	Recovery	=	97.78%
50) Toluene-d8	10.343	98	467384	56.72	ug/l	0.00
Spiked Amount	50.000	Range	49 - 140	Recovery	=	113.44%
62) 4-Bromofluorobenzene	12.631	95	179878	60.61	ug/l	0.00
Spiked Amount	50.000	Range	25 - 144	Recovery	=	121.22%
Target Compounds						
44) Trichloroethene	9.120	130	3172	1.10	ug/l	Qvalue 92

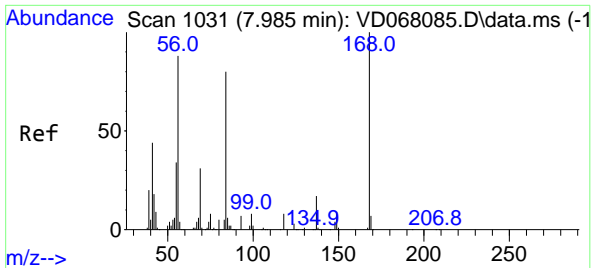
(#) = qualifier out of range (m) = manual integration (+) = signals summed

Data Path : Z:\voasrv\HPCHEM1\MSVOA_D\Data\VD011921\
 Data File : VD068092.D
 Acq On : 19 Jan 2021 16:05
 Operator : VA/SY
 Sample : M1146-01
 Misc : 4.68G/5.00ml/MSVOA_D/SOIL
 ALS Vial : 15 Sample Multiplier: 1

Instrument :
 MSVOA_D
 ClientSampled :
 520-Z

Quant Time: Jan 19 16:45:09 2021
 Quant Method : Z:\voasrv\HPCHEM1\MSVOA_D\Method\82D011921S.M
 Quant Title : SW846 8260
 QLast Update : Tue Jan 19 13:19:08 2021
 Response via : Initial Calibration

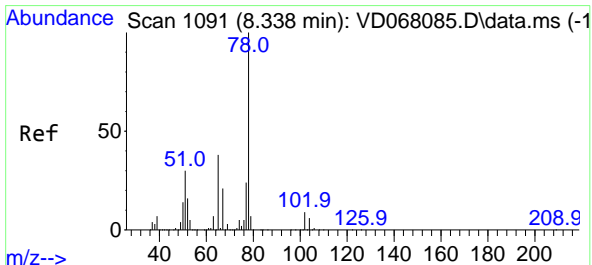
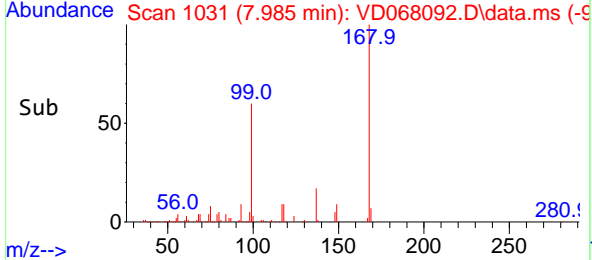
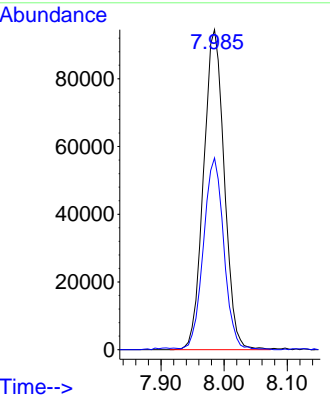
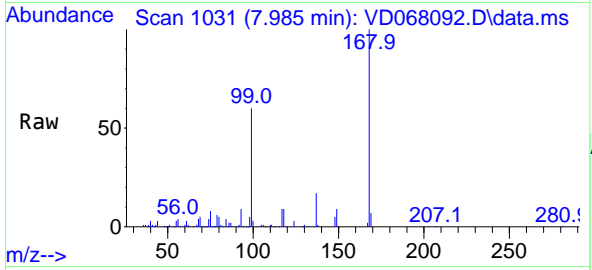




#1
 Pentafluorobenzene
 Concen: 50.00 ug/l
 RT: 7.985 min Scan# 1031
 Delta R.T. -0.000 min
 Lab File: VD068092.D
 Acq: 19 Jan 2021 16:05

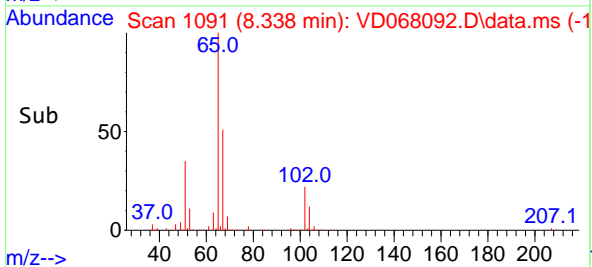
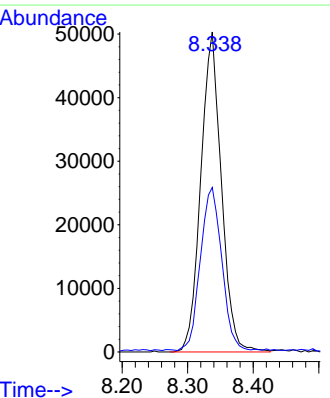
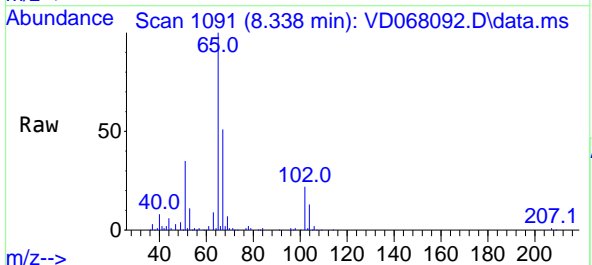
Instrument :
 MSVOA_D
 ClientSampled :
 520-Z

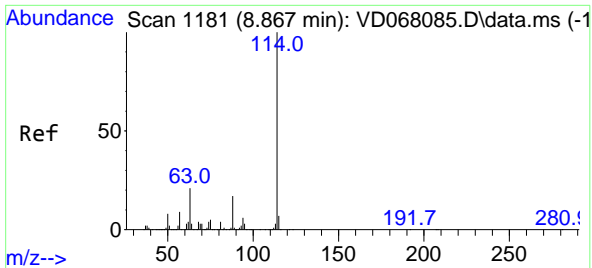
Tgt Ion:168 Resp: 215070
 Ion Ratio Lower Upper
 168 100
 99 59.7 43.5 65.3



#33
 1,2-Dichloroethane-d4
 Concen: 53.24 ug/l
 RT: 8.338 min Scan# 1091
 Delta R.T. 0.000 min
 Lab File: VD068092.D
 Acq: 19 Jan 2021 16:05

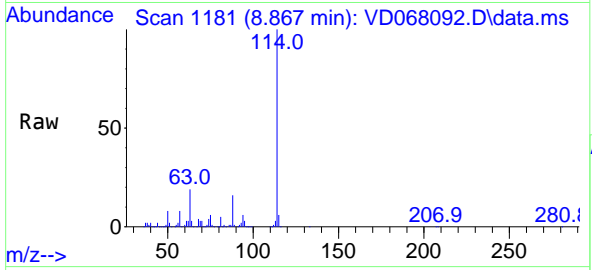
Tgt Ion: 65 Resp: 109535
 Ion Ratio Lower Upper
 65 100
 67 53.1 0.0 105.0





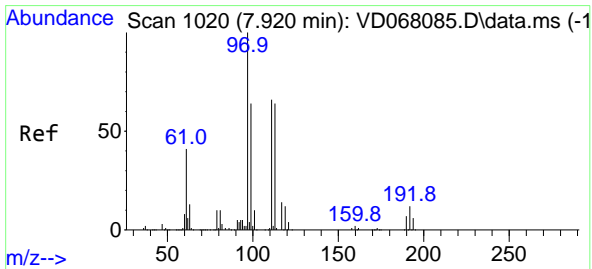
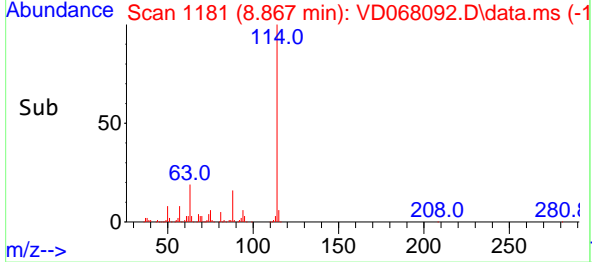
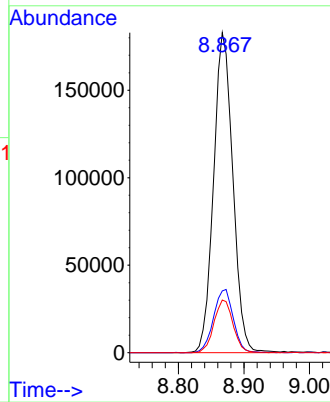
#34
 1,4-Difluorobenzene
 Concen: 50.00 ug/l
 RT: 8.867 min Scan# 1181
 Delta R.T. -0.000 min
 Lab File: VD068092.D
 Acq: 19 Jan 2021 16:05

Instrument :
 MSVOA_D
 ClientSampled :
 520-Z

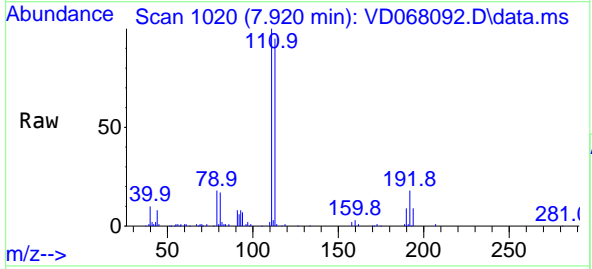


Tgt Ion:114 Resp: 372649

Ion	Ratio	Lower	Upper
114	100		
63	19.3	0.0	34.8
88	16.5	0.0	31.6

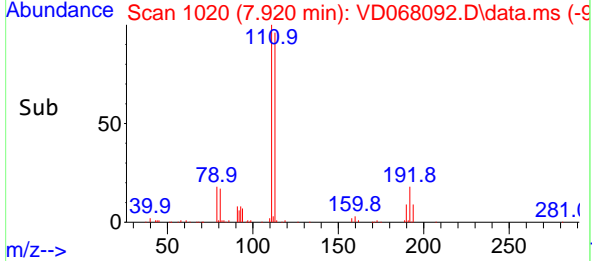
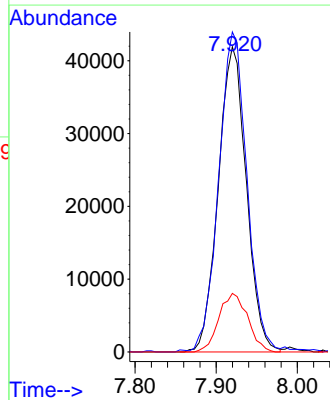


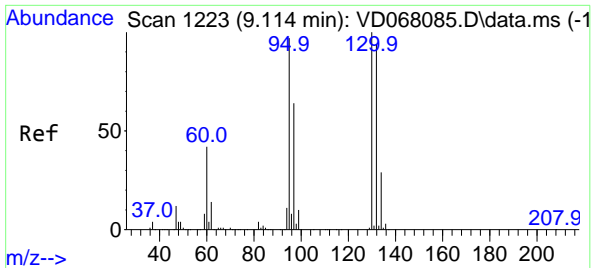
#35
 Dibromofluoromethane
 Concen: 48.89 ug/l
 RT: 7.920 min Scan# 1020
 Delta R.T. 0.000 min
 Lab File: VD068092.D
 Acq: 19 Jan 2021 16:05



Tgt Ion:113 Resp: 100727

Ion	Ratio	Lower	Upper
113	100		
111	106.4	81.4	122.0
192	19.7	16.1	24.1

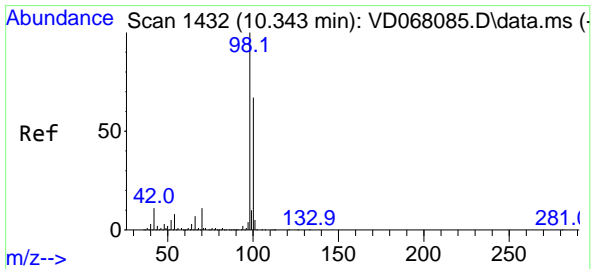
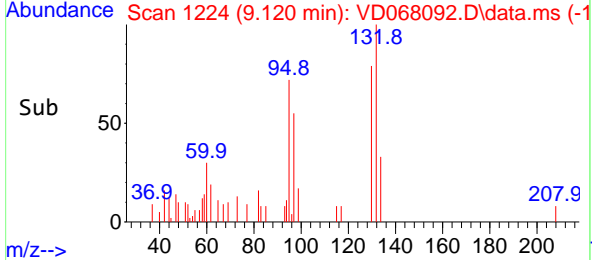
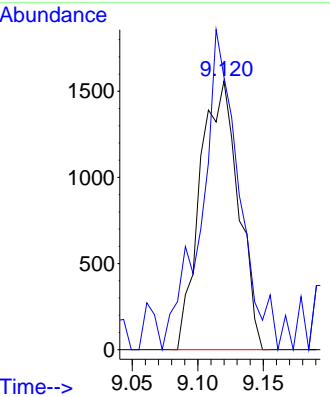
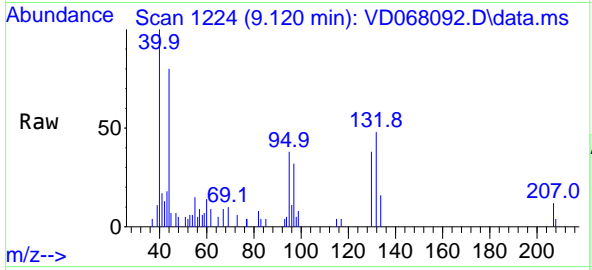




#44
 Trichloroethene
 Concen: 1.10 ug/l
 RT: 9.120 min Scan# 1224
 Delta R.T. 0.006 min
 Lab File: VD068092.D
 Acq: 19 Jan 2021 16:05

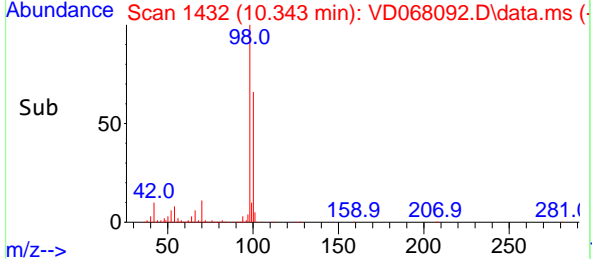
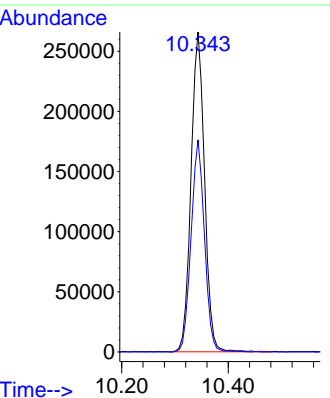
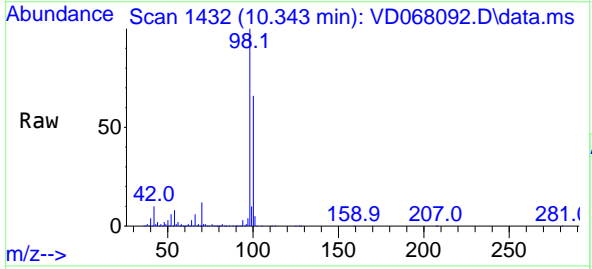
Instrument :
 MSVOA_D
 ClientSampled :
 520-Z

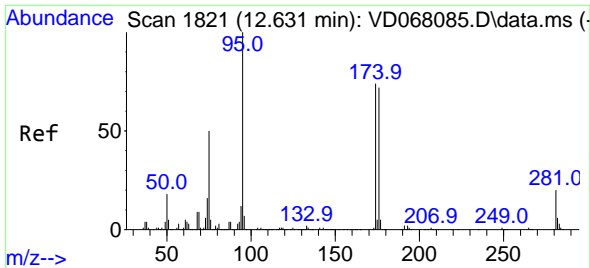
Tgt Ion:130 Resp: 3172
 Ion Ratio Lower Upper
 130 100
 95 88.2 0.0 191.2



#50
 Toluene-d8
 Concen: 56.72 ug/l
 RT: 10.343 min Scan# 1432
 Delta R.T. 0.000 min
 Lab File: VD068092.D
 Acq: 19 Jan 2021 16:05

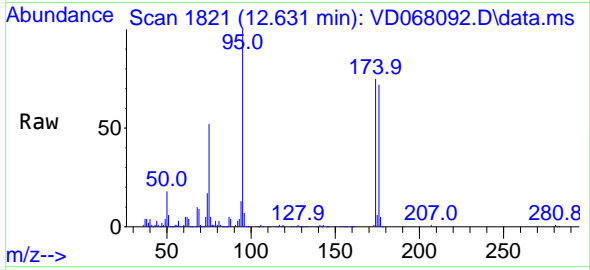
Tgt Ion: 98 Resp: 467384
 Ion Ratio Lower Upper
 98 100
 100 65.8 53.0 79.4





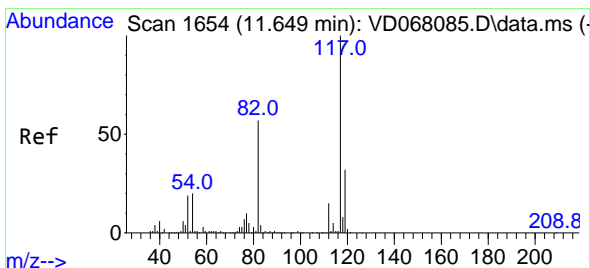
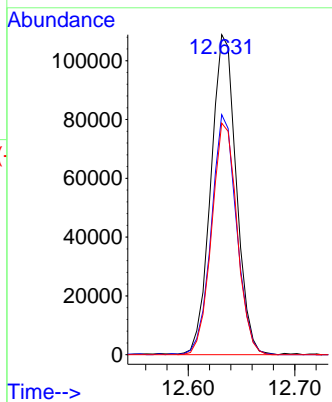
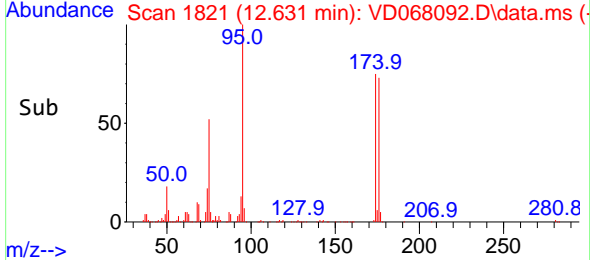
#62
 4-Bromofluorobenzene
 Concen: 60.61 ug/l
 RT: 12.631 min Scan# 1821
 Delta R.T. 0.000 min
 Lab File: VD068092.D
 Acq: 19 Jan 2021 16:05

Instrument :
 MSVOA_D
ClientSampled :
 520-Z

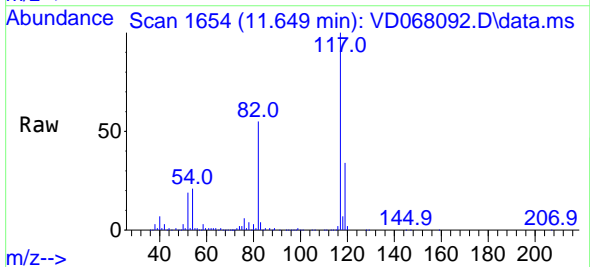


Tgt Ion: 95 Resp: 179878

Ion	Ratio	Lower	Upper
95	100		
174	74.5	0.0	172.4
176	72.2	0.0	168.4

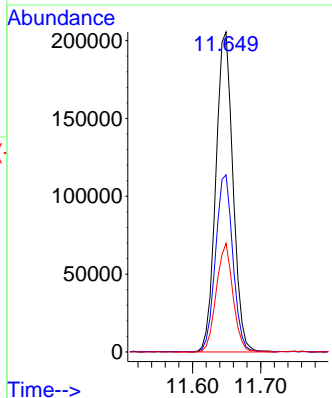
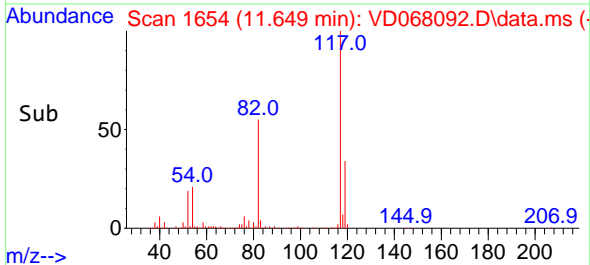


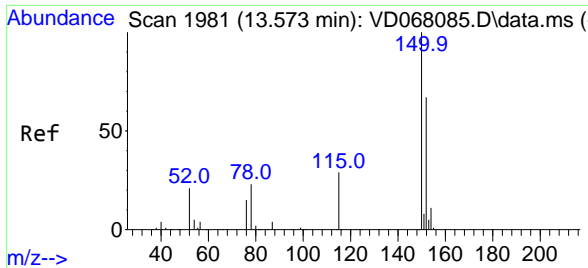
#63
 Chlorobenzene-d5
 Concen: 50.00 ug/l
 RT: 11.649 min Scan# 1654
 Delta R.T. 0.000 min
 Lab File: VD068092.D
 Acq: 19 Jan 2021 16:05



Tgt Ion: 117 Resp: 360538

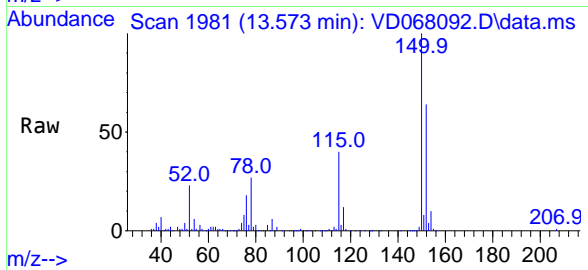
Ion	Ratio	Lower	Upper
117	100		
82	55.1	41.4	62.0
119	33.9	26.1	39.1





#72
 1,4-Dichlorobenzene-d4
 Concen: 50.00 ug/l
 RT: 13.573 min Scan# 1981
 Delta R.T. 0.000 min
 Lab File: VD068092.D
 Acq: 19 Jan 2021 16:05

Instrument :
 MSVOA_D
 ClientSampled :
 520-Z



Tgt Ion:152 Resp: 173782

Ion	Ratio	Lower	Upper
152	100		
115	60.8	28.9	86.8
150	155.7	0.0	344.4

