

Data Path : Z:\voasrv\HPCHEM1\MSVOA_D\Data\VD011922\
 Data File : VD071746.D
 Acq On : 19 Jan 2022 16:10
 Operator : VA/SY
 Sample : N1188-01
 Misc : 3.96G/5.00ml/MSVOA_D/SOIL
 ALS Vial : 1 Sample Multiplier: 1

Instrument :
 MSVOA_D
 ClientSampleId :

Quant Time: Jan 20 04:59:16 2022
 Quant Method : Z:\voasrv\HPCHEM1\MSVOA_D\Method\82D010722S.M
 Quant Title : SW846 8260
 QLast Update : Fri Jan 07 15:39:14 2022
 Response via : Initial Calibration

Compound	R.T.	QIon	Response	Conc	Units	Dev(Min)

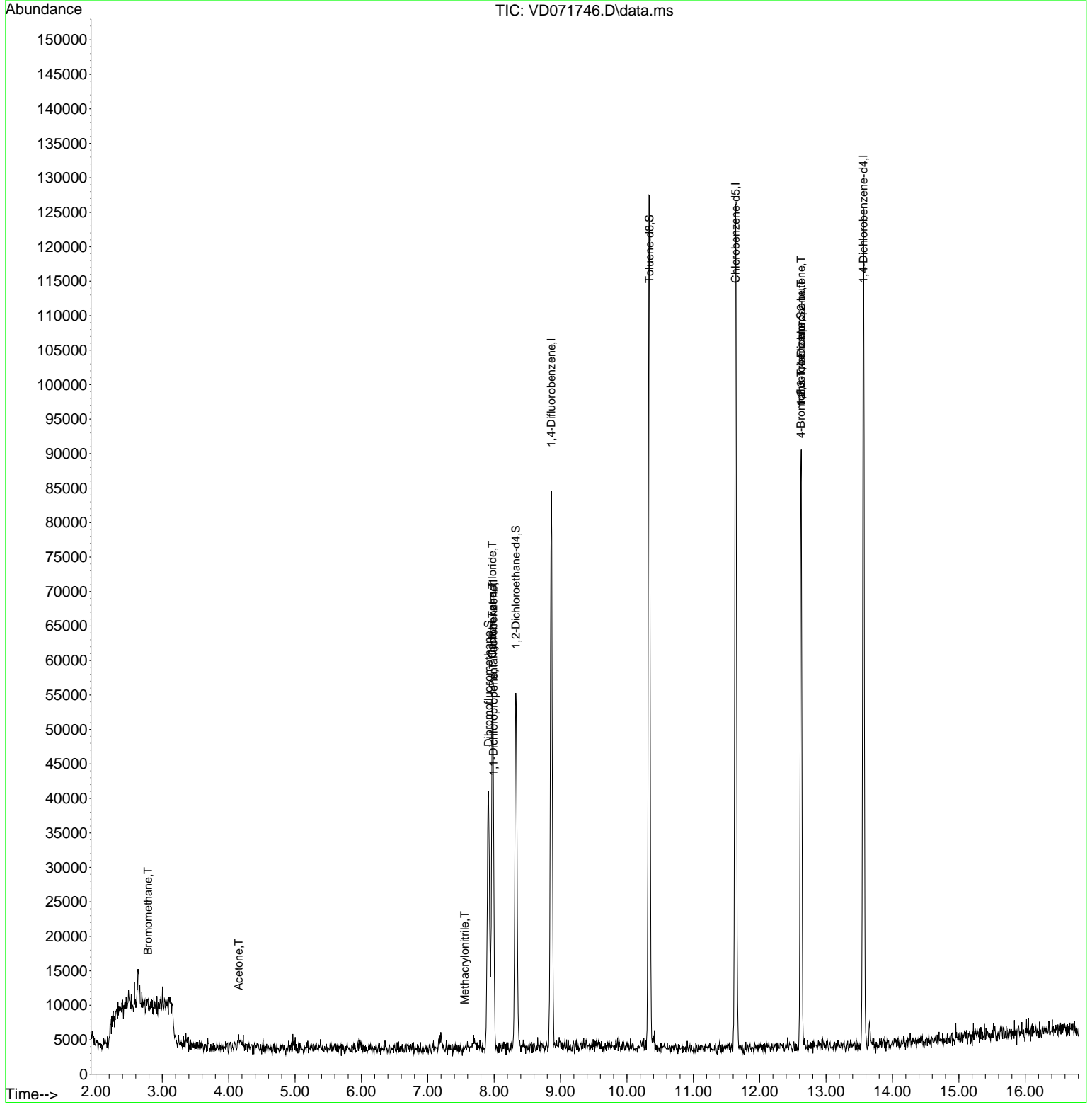
Internal Standards						
1) Pentafluorobenzene	7.985	168	34692	50.000	ug/l	0.00
34) 1,4-Difluorobenzene	8.861	114	61327	50.000	ug/l	0.00
63) Chlorobenzene-d5	11.638	117	64921	50.000	ug/l	0.00
72) 1,4-Dichlorobenzene-d4	13.561	152	30497	50.000	ug/l	0.00
System Monitoring Compounds						
33) 1,2-Dichloroethane-d4	8.326	65	43565	97.595	ug/l	0.00
Spiked Amount	50.000	Range	50 - 163	Recovery	=	195.180%#
35) Dibromofluoromethane	7.914	113	26954	66.505	ug/l	0.00
Spiked Amount	50.000	Range	54 - 147	Recovery	=	133.000%
50) Toluene-d8	10.338	98	79354	52.305	ug/l	0.00
Spiked Amount	50.000	Range	49 - 140	Recovery	=	104.600%
62) 4-Bromofluorobenzene	12.620	95	27660	51.739	ug/l	0.00
Spiked Amount	50.000	Range	25 - 144	Recovery	=	103.480%
Target Compounds						
					Qvalue	
3) Chloromethane	2.209	50	84	Below Cal	#	43
5) Bromomethane	2.785	94	528	1.153	ug/l	84
11) Tert butyl alcohol	5.208	59	254	Below Cal	#	75
16) Acetone	4.150	43	2867	27.819	ug/l	# 87
20) Methylene Chloride	4.985	84	306	Below Cal	#	15
31) Cyclohexane	7.973	56	1306	2.421	ug/l	# 54
36) 1,1-Dichloropropene	7.991	75	3532	6.109	ug/l	# 43
38) Carbon Tetrachloride	7.973	117	4146	7.081	ug/l	# 21
41) Methacrylonitrile	7.555	41	57	1.467	ug/l	# 25
76) 1,2,3-Trichloropropane	12.626	75	16213	55.018	ug/l	# 100
81) trans-1,4-Dichloro-2-b...	12.626	75	16213	153.384	ug/l	# 3

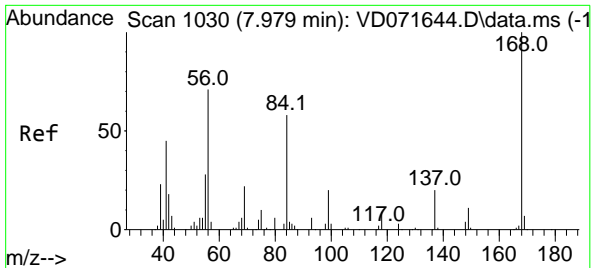
(#) = qualifier out of range (m) = manual integration (+) = signals summed

Data Path : Z:\voasrv\HPCHEM1\MSVOA_D\Data\VD011922\
 Data File : VD071746.D
 Acq On : 19 Jan 2022 16:10
 Operator : VA/SY
 Sample : N1188-01
 Misc : 3.96G/5.00ml/MSVOA_D/SOIL
 ALS Vial : 1 Sample Multiplier: 1

Instrument :
 MSVOA_D
 ClientSampleId :

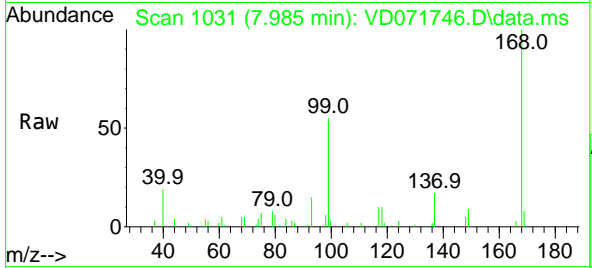
Quant Time: Jan 20 04:59:16 2022
 Quant Method : Z:\voasrv\HPCHEM1\MSVOA_D\Method\82D010722S.M
 Quant Title : SW846 8260
 QLast Update : Fri Jan 07 15:39:14 2022
 Response via : Initial Calibration



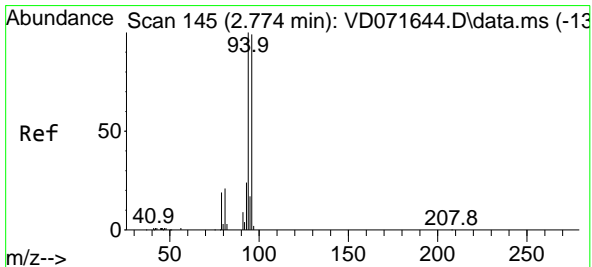
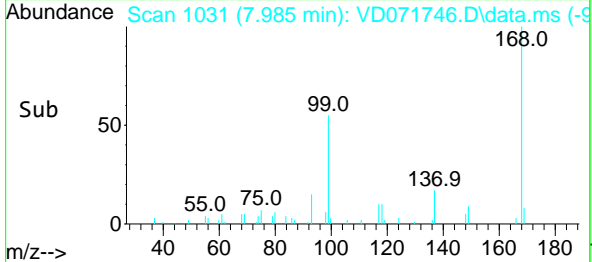
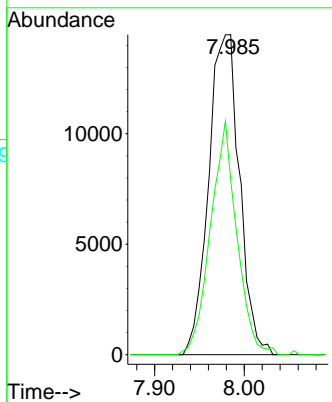


#1
 Pentafluorobenzene
 Concen: 50.000 ug/l
 RT: 7.985 min Scan# 10
 Delta R.T. 0.006 min
 Lab File: VD071746.D
 Acq: 19 Jan 2022 16:10

Instrument :
 MSVOA_D
 ClientSampleId :

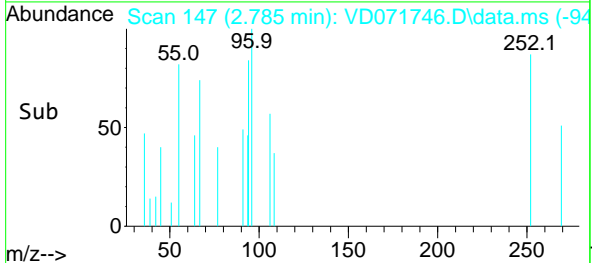
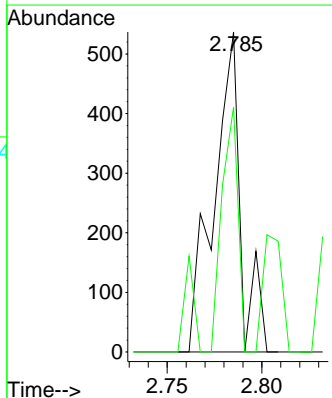
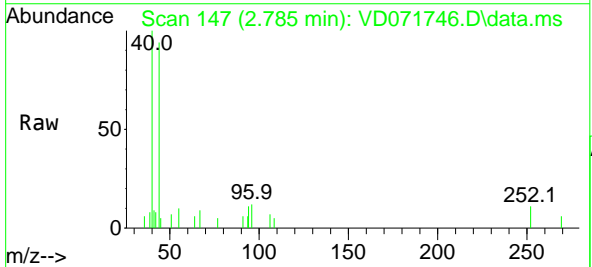


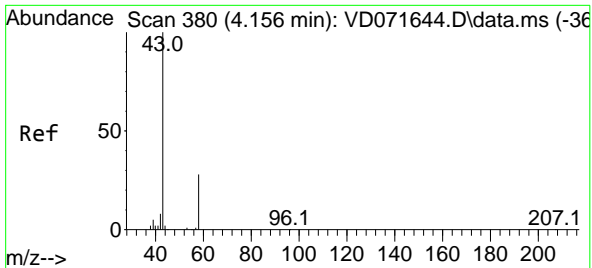
Tgt Ion:168 Resp: 34692
 Ion Ratio Lower Upper
 168 100
 99 54.7 51.8 77.6



#5
 Bromomethane
 Concen: 1.153 ug/l
 RT: 2.785 min Scan# 147
 Delta R.T. 0.012 min
 Lab File: VD071746.D
 Acq: 19 Jan 2022 16:10

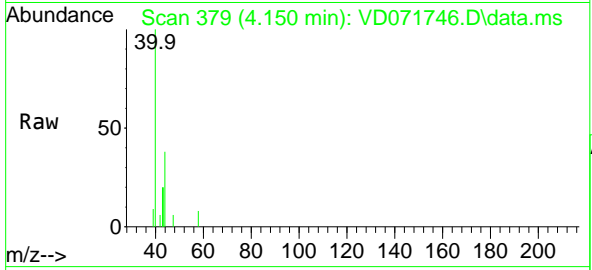
Tgt Ion: 94 Resp: 528
 Ion Ratio Lower Upper
 94 100
 96 76.5 73.7 110.5



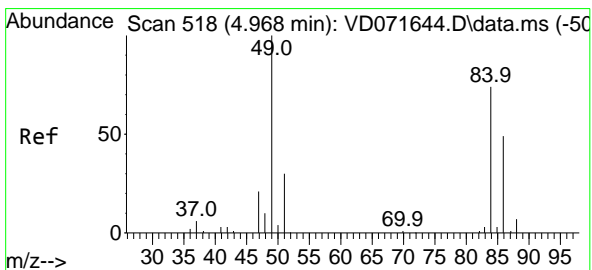
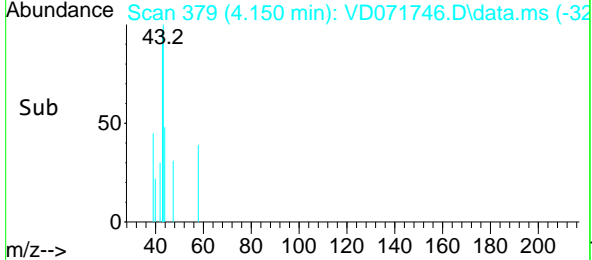
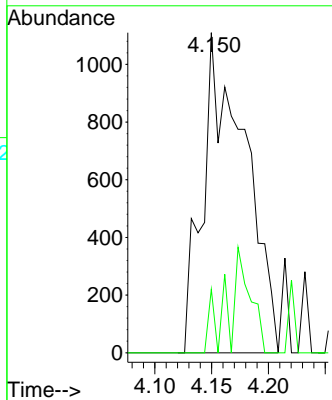


#16
 Acetone
 Concen: 27.819 ug/l
 RT: 4.150 min Scan# 31
 Delta R.T. -0.005 min
 Lab File: VD071746.D
 Acq: 19 Jan 2022 16:10

Instrument :
 MSVOA_D
 ClientSampleId :

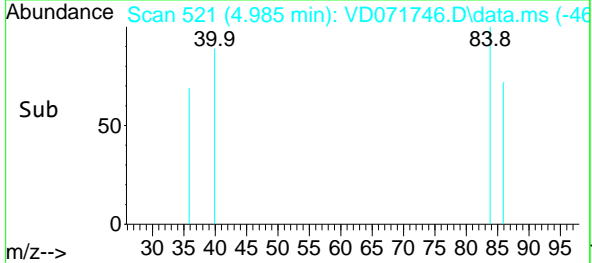
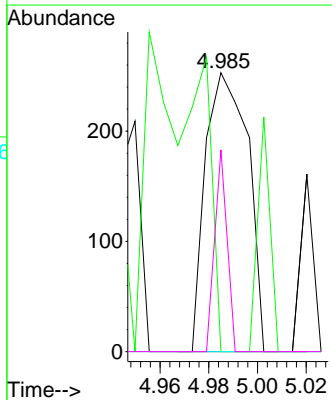
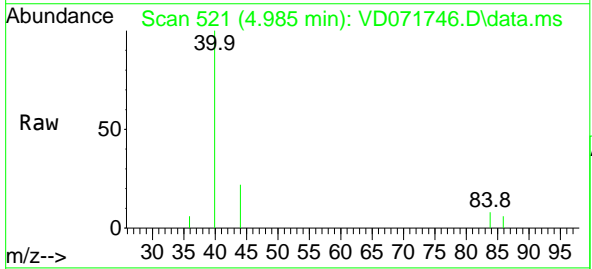


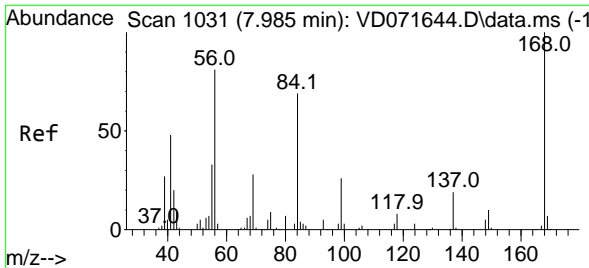
Tgt Ion: 43 Resp: 2867
 Ion Ratio Lower Upper
 43 100
 58 19.8 21.0 31.6#



#20
 Methylene Chloride
 Concen: Below Cal
 RT: 4.985 min Scan# 521
 Delta R.T. 0.018 min
 Lab File: VD071746.D
 Acq: 19 Jan 2022 16:10

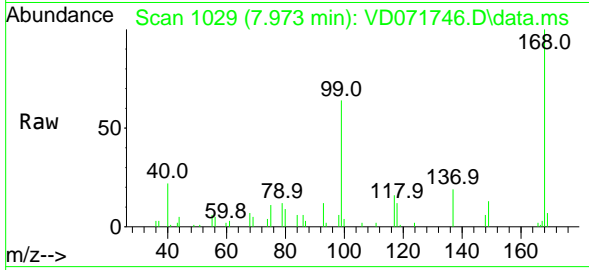
Tgt Ion: 84 Resp: 306
 Ion Ratio Lower Upper
 84 100
 49 0.0 118.6 178.0#
 51 0.0 37.8 56.6#
 86 72.3 47.9 71.9#



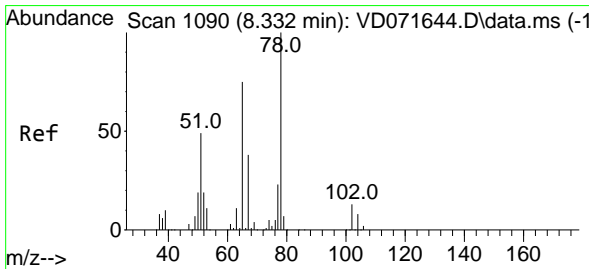
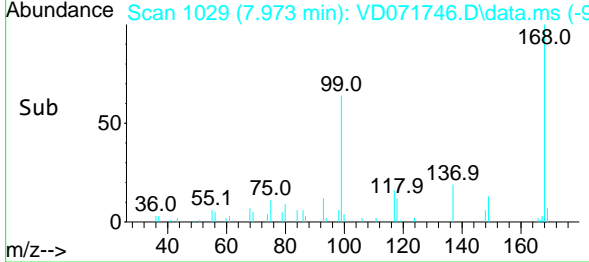
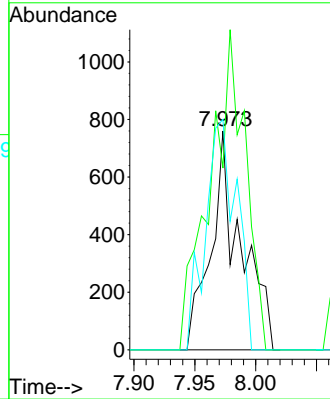


#31
 Cyclohexane
 Concen: 2.421 ug/l
 RT: 7.973 min Scan# 1029
 Delta R.T. -0.017 min
 Lab File: VD071746.D
 Acq: 19 Jan 2022 16:10

Instrument :
 MSVOA_D
 ClientSampleId :

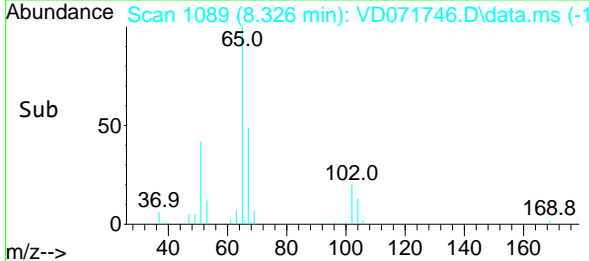
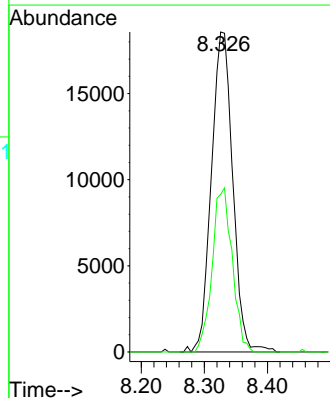
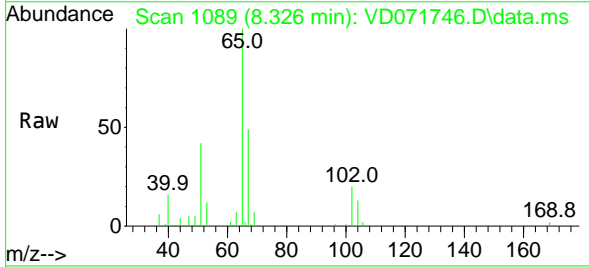


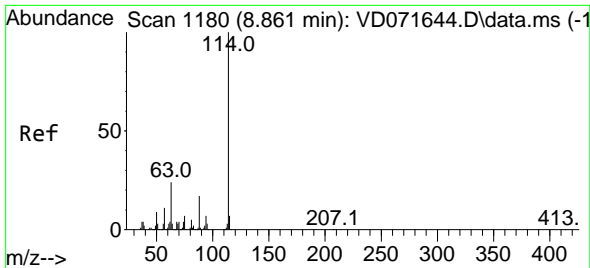
Tgt Ion: 56 Resp: 1306
 Ion Ratio Lower Upper
 56 100
 69 83.0 21.7 32.5#
 84 105.3 65.7 98.5#



#33
 1,2-Dichloroethane-d4
 Concen: 97.595 ug/l
 RT: 8.326 min Scan# 1089
 Delta R.T. -0.006 min
 Lab File: VD071746.D
 Acq: 19 Jan 2022 16:10

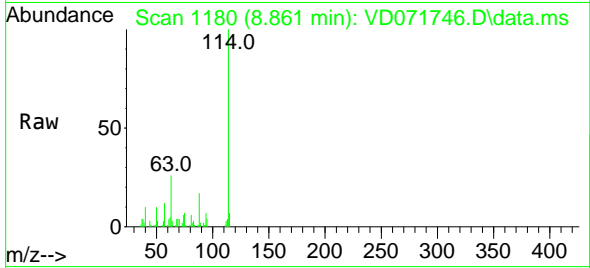
Tgt Ion: 65 Resp: 43565
 Ion Ratio Lower Upper
 65 100
 67 48.1 0.0 101.2





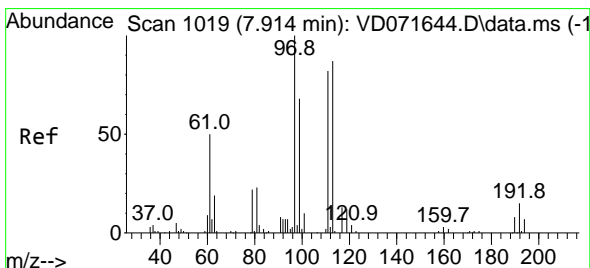
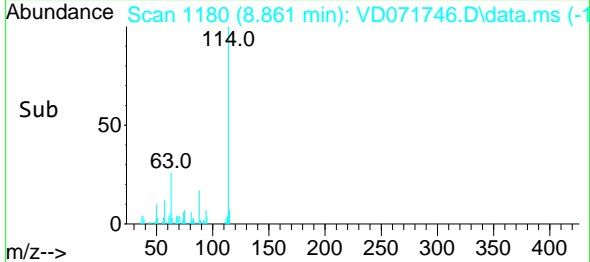
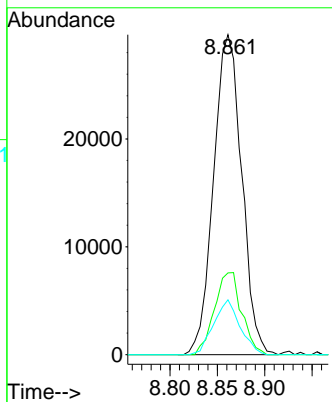
#34
 1,4-Difluorobenzene
 Concen: 50.000 ug/l
 RT: 8.861 min Scan# 1180
 Delta R.T. -0.006 min
 Lab File: VD071746.D
 Acq: 19 Jan 2022 16:10

Instrument : MSVOA_D
 ClientSampleId :



Tgt Ion:114 Resp: 61327

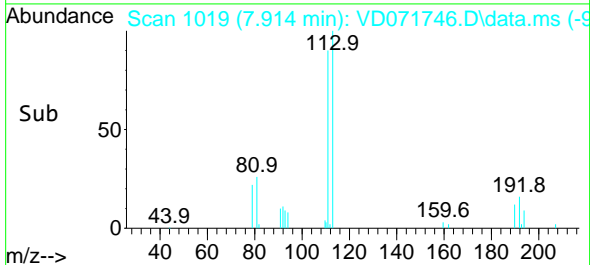
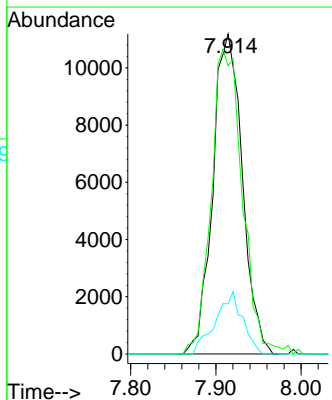
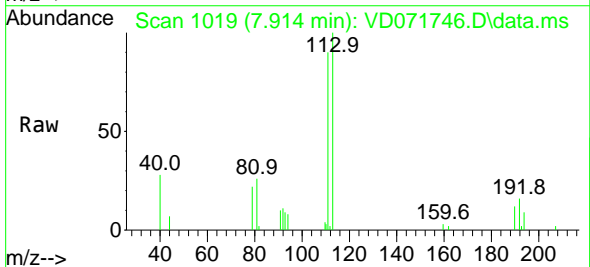
Ion	Ratio	Lower	Upper
114	100		
63	25.5	0.0	46.2
88	17.1	0.0	32.0

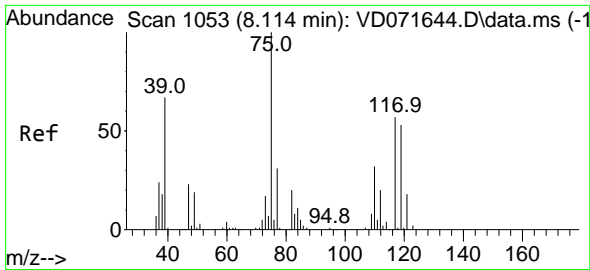


#35
 Dibromofluoromethane
 Concen: 66.505 ug/l
 RT: 7.914 min Scan# 1019
 Delta R.T. 0.000 min
 Lab File: VD071746.D
 Acq: 19 Jan 2022 16:10

Tgt Ion:113 Resp: 26954

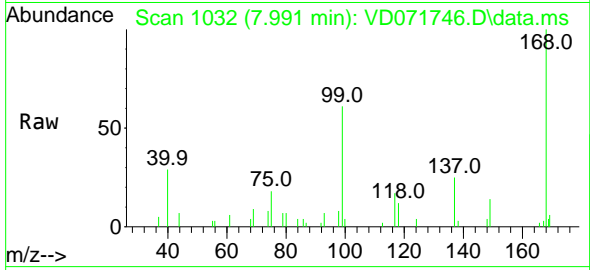
Ion	Ratio	Lower	Upper
113	100		
111	100.6	82.2	123.4
192	17.9	14.2	21.2



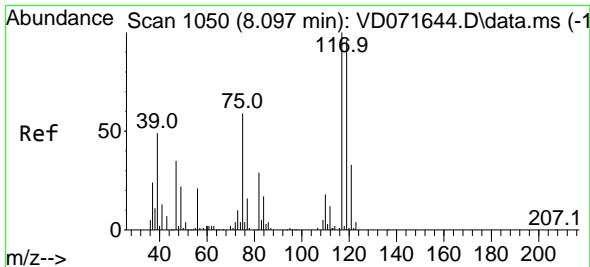
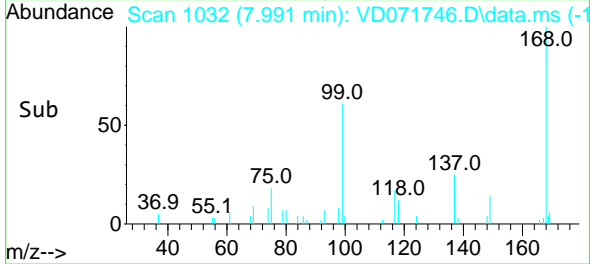
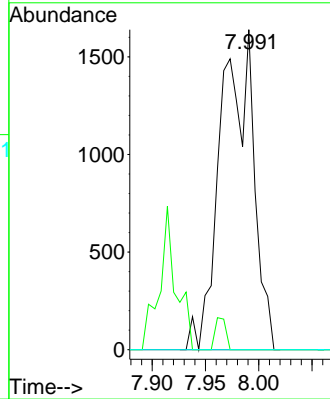


#36
 1,1-Dichloropropene
 Concen: 6.109 ug/l
 RT: 7.991 min Scan# 1029
 Delta R.T. -0.123 min
 Lab File: VD071746.D
 Acq: 19 Jan 2022 16:10

Instrument : MSVOA_D
 ClientSampleId :

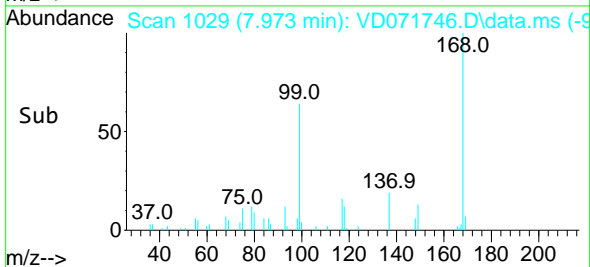
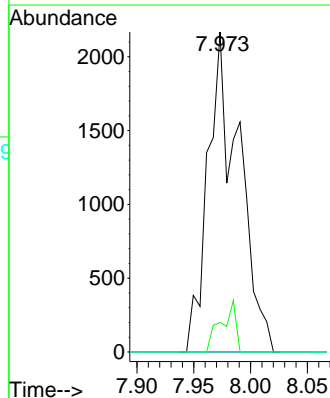
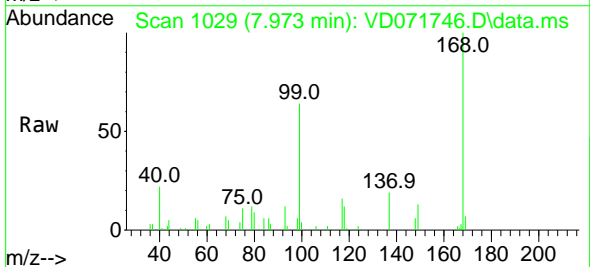


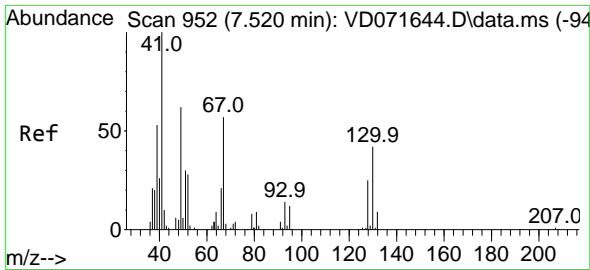
Tgt Ion: 75 Resp: 3532
 Ion Ratio Lower Upper
 75 100
 110 0.0 16.0 48.0#
 77 0.0 24.5 36.7#



#38
 Carbon Tetrachloride
 Concen: 7.081 ug/l
 RT: 7.973 min Scan# 1029
 Delta R.T. -0.123 min
 Lab File: VD071746.D
 Acq: 19 Jan 2022 16:10

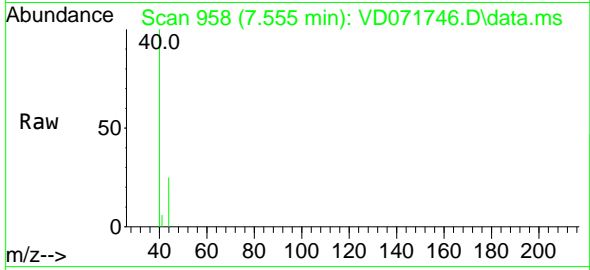
Tgt Ion: 117 Resp: 4146
 Ion Ratio Lower Upper
 117 100
 119 9.2 73.4 110.2#
 121 0.0 23.9 35.9#





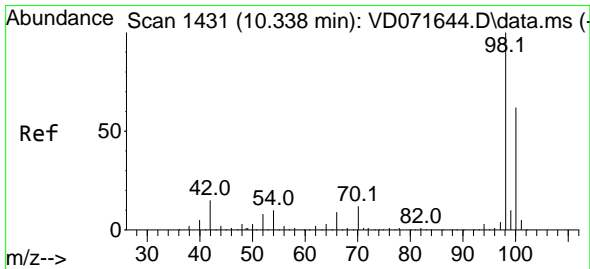
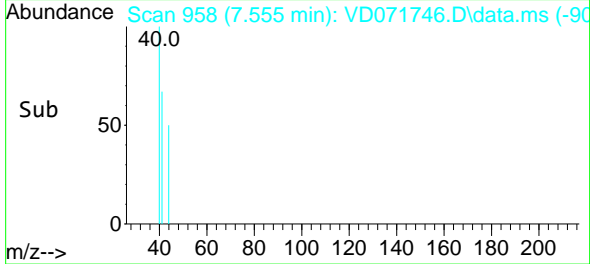
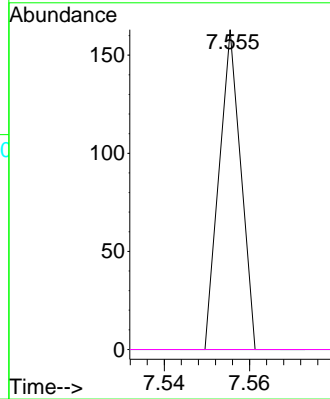
#41
 Methacrylonitrile
 Concen: 1.467 ug/l
 RT: 7.555 min Scan# 91
 Delta R.T. 0.035 min
 Lab File: VD071746.D
 Acq: 19 Jan 2022 16:10

Instrument :
 MSVOA_D
 ClientSampleId :



Tgt Ion: 41 Resp: 57

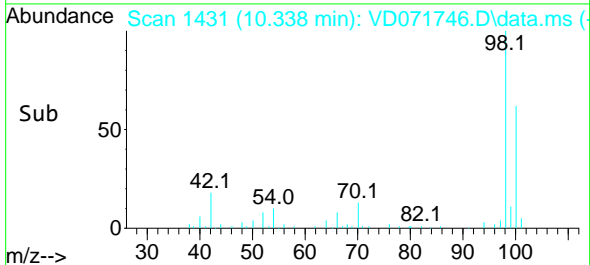
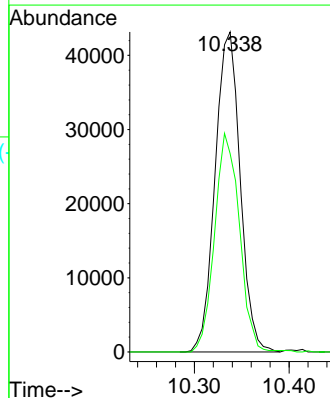
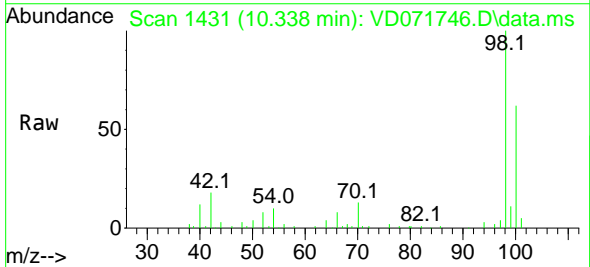
Ion	Ratio	Lower	Upper
41	100		
39	0.0	46.9	70.3#
67	0.0	49.3	73.9#
52	0.0	23.1	34.7#

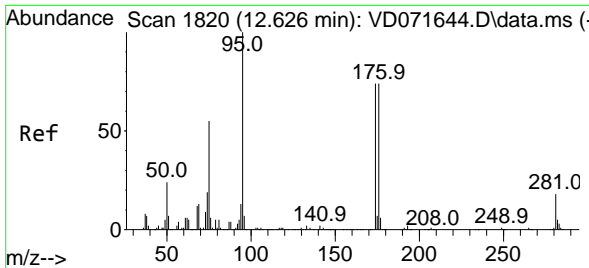


#50
 Toluene-d8
 Concen: 52.305 ug/l
 RT: 10.338 min Scan# 1431
 Delta R.T. 0.001 min
 Lab File: VD071746.D
 Acq: 19 Jan 2022 16:10

Tgt Ion: 98 Resp: 79354

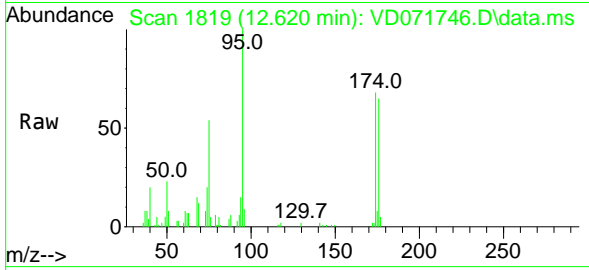
Ion	Ratio	Lower	Upper
98	100		
100	67.5	52.1	78.1



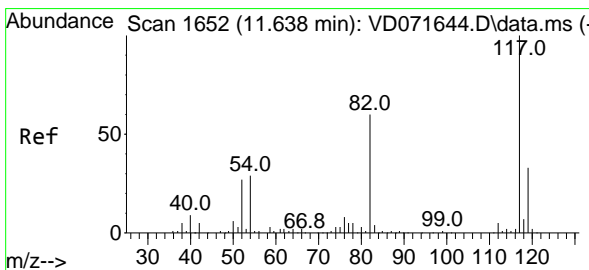
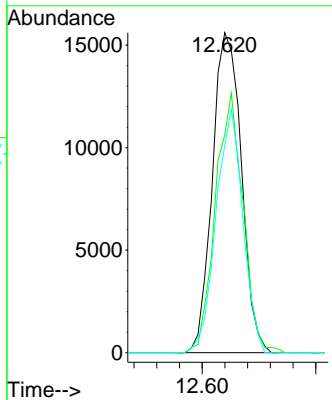
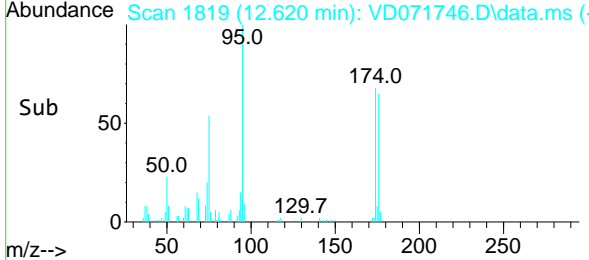


#62
 4-Bromofluorobenzene
 Concen: 51.739 ug/l
 RT: 12.620 min Scan# 1819
 Delta R.T. -0.006 min
 Lab File: VD071746.D
 Acq: 19 Jan 2022 16:10

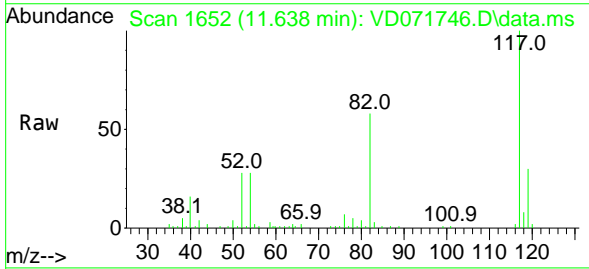
Instrument : MSVOA_D
 ClientSampleId :



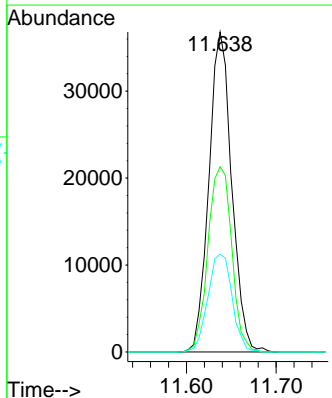
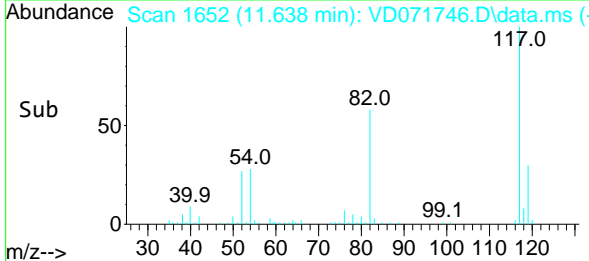
Tgt Ion: 95 Resp: 27660
 Ion Ratio Lower Upper
 95 100
 174 77.2 0.0 150.0
 176 70.4 0.0 146.4

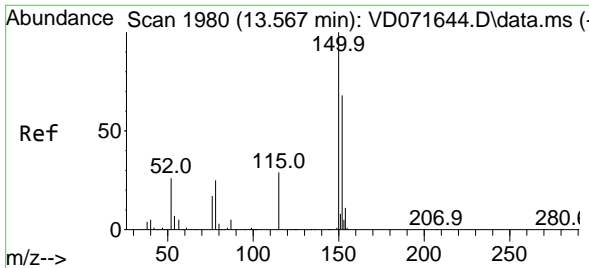


#63
 Chlorobenzene-d5
 Concen: 50.000 ug/l
 RT: 11.638 min Scan# 1652
 Delta R.T. 0.001 min
 Lab File: VD071746.D
 Acq: 19 Jan 2022 16:10



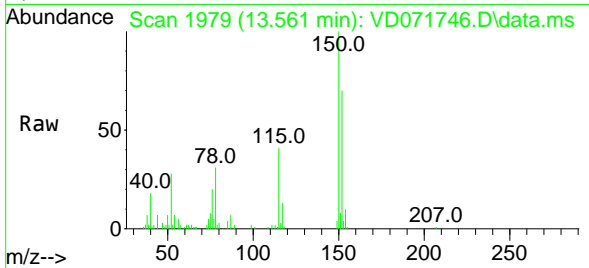
Tgt Ion: 117 Resp: 64921
 Ion Ratio Lower Upper
 117 100
 82 57.8 46.9 70.3
 119 30.5 26.6 39.8



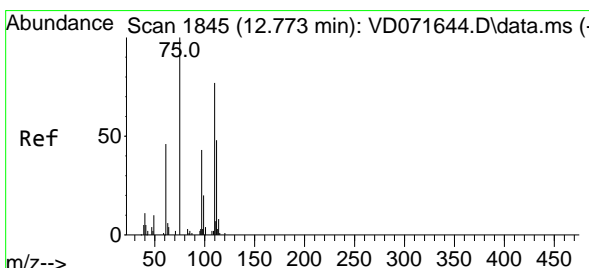
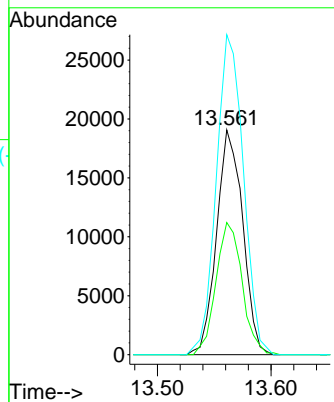
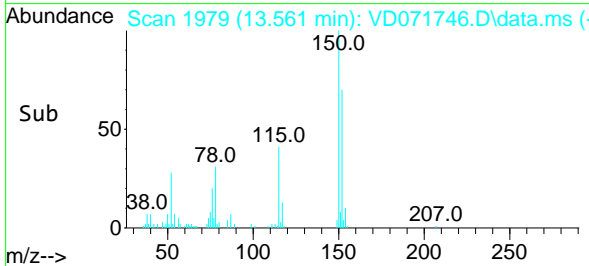


#72
 1,4-Dichlorobenzene-d4
 Concen: 50.000 ug/l
 RT: 13.561 min Scan# 1980
 Delta R.T. -0.006 min
 Lab File: VD071746.D
 Acq: 19 Jan 2022 16:10

Instrument : MSVOA_D
 ClientSampleId :

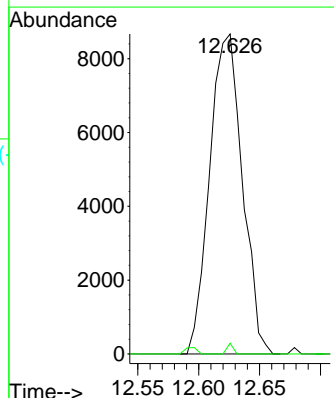
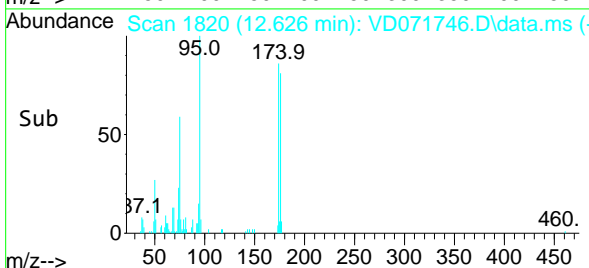
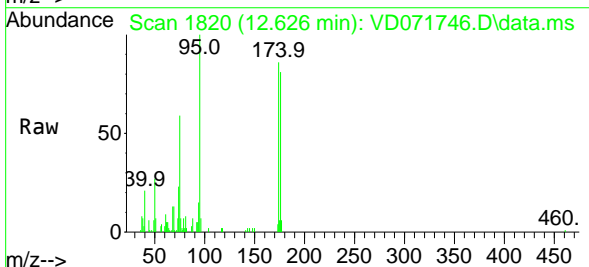


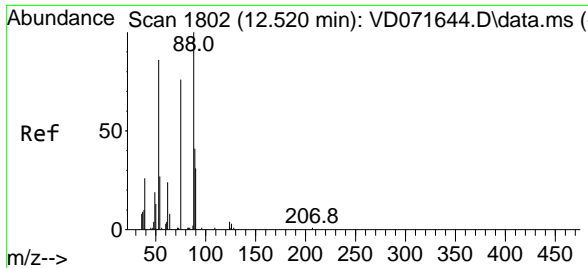
Tgt Ion:152 Resp: 30497
 Ion Ratio Lower Upper
 152 100
 115 58.8 31.5 94.5
 150 148.3 0.0 348.0



#76
 1,2,3-Trichloropropane
 Concen: 55.018 ug/l
 RT: 12.626 min Scan# 1820
 Delta R.T. -0.147 min
 Lab File: VD071746.D
 Acq: 19 Jan 2022 16:10

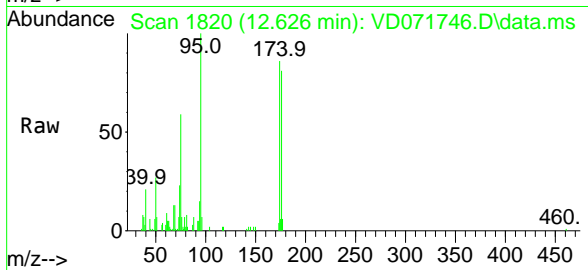
Tgt Ion: 75 Resp: 16213
 Ion Ratio Lower Upper
 75 100
 77 0.6 0.0 0.0#





#81
 trans-1,4-Dichloro-2-butene
 Concen: 153.384 ug/l
 RT: 12.626 min Scan# 11
 Delta R.T. 0.106 min
 Lab File: VD071746.D
 Acq: 19 Jan 2022 16:10

Instrument :
 MSVOA_D
 ClientSampleId :



Tgt Ion: 75 Resp: 16213

Ion	Ratio	Lower	Upper
75	100		
53	0.3	95.4	143.0#
89	0.0	37.2	55.8#

