

Data Path : Z:\voasrv\HPCHEM1\MSVOA\_D\Data\VD011922\  
 Data File : VD071751.D  
 Acq On : 19 Jan 2022 18:33  
 Operator : VA/SY  
 Sample : N1189-29  
 Misc : 5.07G/5.00ml/MSVOA\_D/SOIL  
 ALS Vial : 1 Sample Multiplier: 1

**Instrument :**  
 MSVOA\_D  
**ClientSampleId :**  
 MTR-SOIL-15

Quant Time: Jan 20 05:00:36 2022  
 Quant Method : Z:\voasrv\HPCHEM1\MSVOA\_D\Method\82D010722S.M  
 Quant Title : SW846 8260  
 QLast Update : Fri Jan 07 15:39:14 2022  
 Response via : Initial Calibration

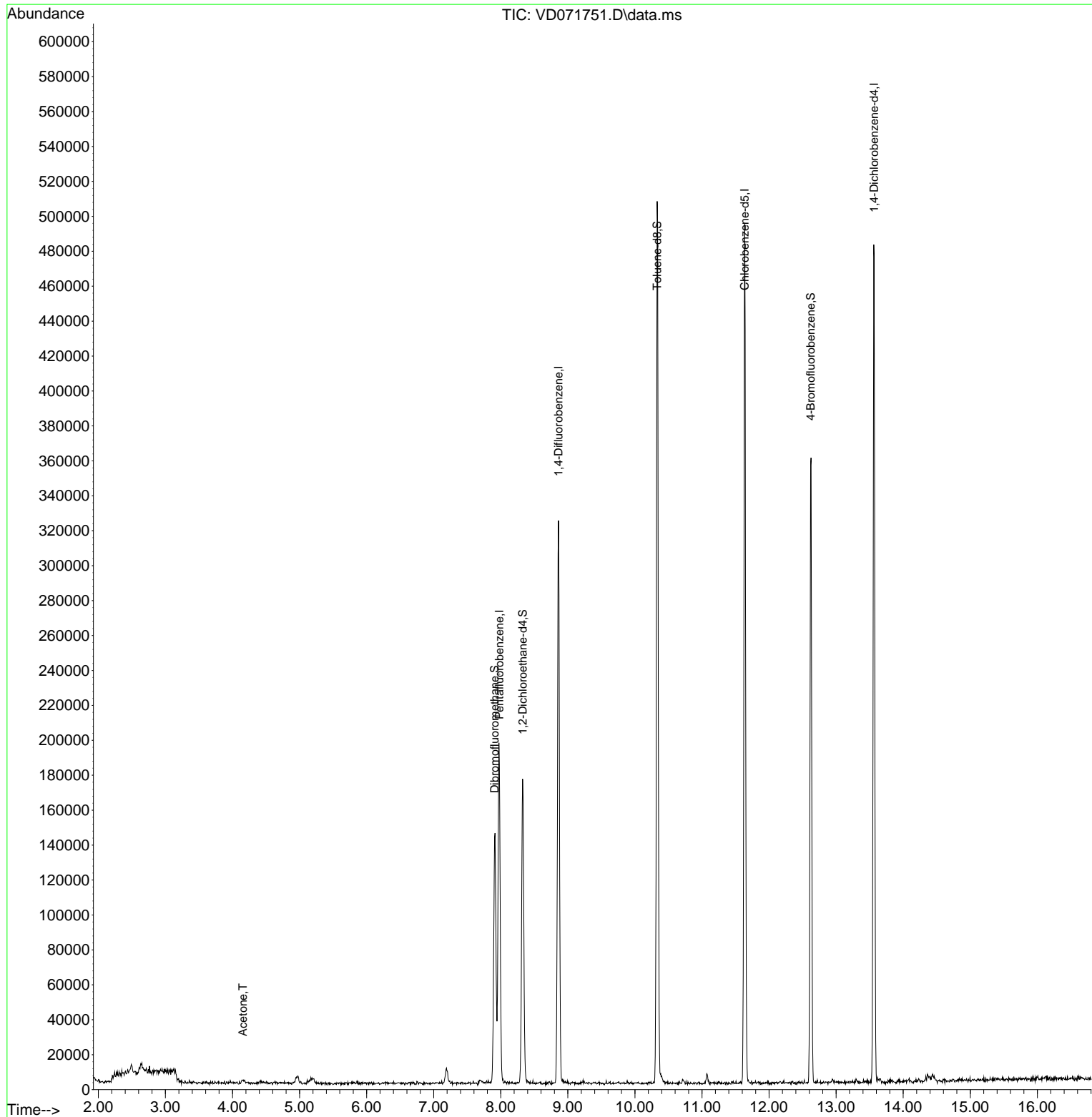
Compound	R.T.	QIon	Response	Conc	Units	Dev(Min)
-----						
Internal Standards						
1) Pentafluorobenzene	7.979	168	128472	50.000	ug/l	0.00
34) 1,4-Difluorobenzene	8.861	114	250167	50.000	ug/l	0.00
63) Chlorobenzene-d5	11.637	117	254675	50.000	ug/l	0.00
72) 1,4-Dichlorobenzene-d4	13.567	152	117206	50.000	ug/l	0.00
System Monitoring Compounds						
33) 1,2-Dichloroethane-d4	8.326	65	140327	84.889	ug/l	0.00
Spiked Amount	50.000	Range	50 - 163	Recovery	= 169.780%#	
35) Dibromofluoromethane	7.908	113	99855	60.398	ug/l	0.00
Spiked Amount	50.000	Range	54 - 147	Recovery	= 120.800%	
50) Toluene-d8	10.332	98	330285	53.368	ug/l	0.00
Spiked Amount	50.000	Range	49 - 140	Recovery	= 106.740%	
62) 4-Bromofluorobenzene	12.620	95	112645	51.654	ug/l	0.00
Spiked Amount	50.000	Range	25 - 144	Recovery	= 103.300%	
Target Compounds						
16) Acetone	4.155	43	3706	9.710	ug/l #	85
-----						

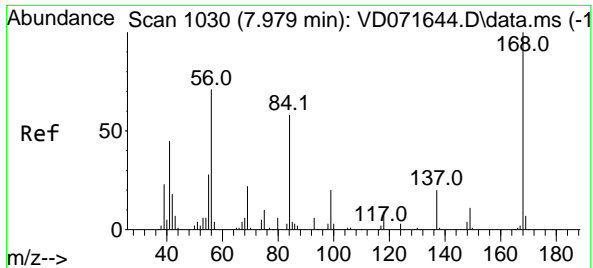
(#) = qualifier out of range (m) = manual integration (+) = signals summed

Data Path : Z:\voasrv\HPCHEM1\MSVOA\_D\Data\VD011922\  
 Data File : VD071751.D  
 Acq On : 19 Jan 2022 18:33  
 Operator : VA/SY  
 Sample : N1189-29  
 Misc : 5.07G/5.00ml/MSVOA\_D/SOIL  
 ALS Vial : 1 Sample Multiplier: 1

Instrument :  
 MSVOA\_D  
 ClientSampleId :  
 MTR-SOIL-15

Quant Time: Jan 20 05:00:36 2022  
 Quant Method : Z:\voasrv\HPCHEM1\MSVOA\_D\Method\82D010722S.M  
 Quant Title : SW846 8260  
 QLast Update : Fri Jan 07 15:39:14 2022  
 Response via : Initial Calibration

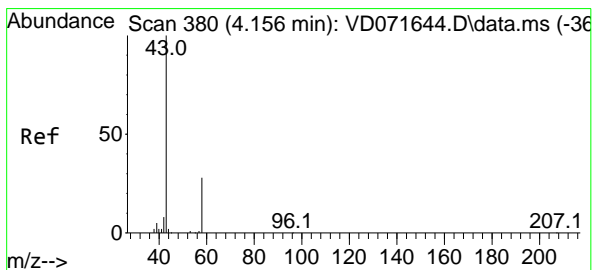
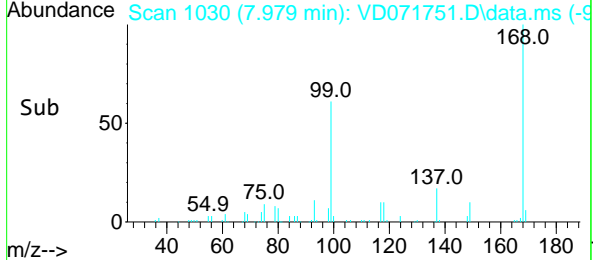
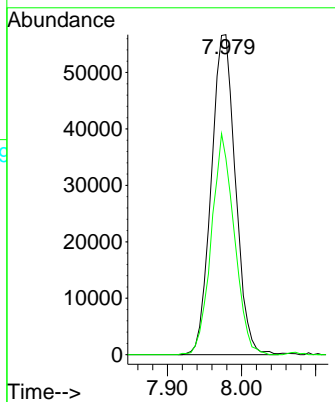
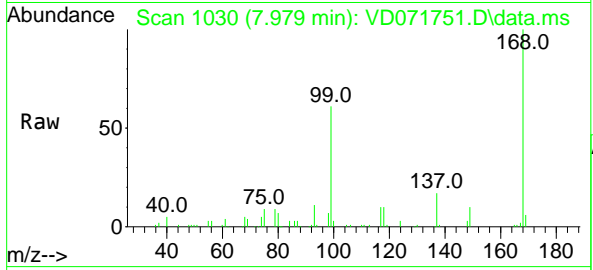




#1  
 Pentafluorobenzene  
 Concen: 50.000 ug/l  
 RT: 7.979 min Scan# 10  
 Delta R.T. -0.000 min  
 Lab File: VD071751.D  
 Acq: 19 Jan 2022 18:33

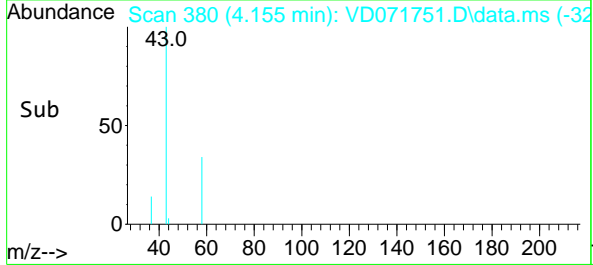
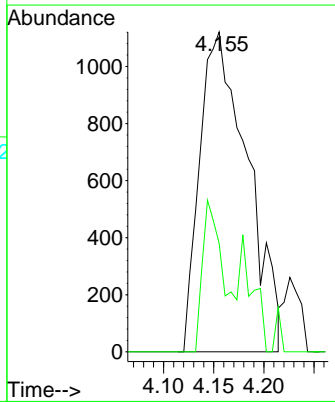
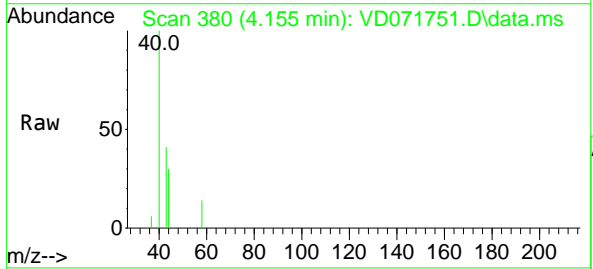
Instrument : MSVOA\_D  
 ClientSampleId : MTR-SOIL-15

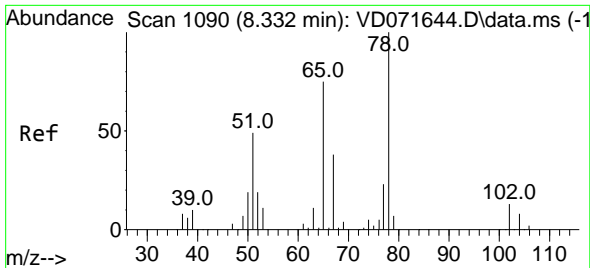
Tgt Ion:168 Resp: 128472  
 Ion Ratio Lower Upper  
 168 100  
 99 61.4 51.8 77.6



#16  
 Acetone  
 Concen: 9.710 ug/l  
 RT: 4.155 min Scan# 380  
 Delta R.T. 0.000 min  
 Lab File: VD071751.D  
 Acq: 19 Jan 2022 18:33

Tgt Ion: 43 Resp: 3706  
 Ion Ratio Lower Upper  
 43 100  
 58 33.9 21.0 31.6#





#33  
 1,2-Dichloroethane-d4  
 Concen: 84.889 ug/l  
 RT: 8.326 min Scan# 1090  
 Delta R.T. -0.006 min  
 Lab File: VD071751.D  
 Acq: 19 Jan 2022 18:33

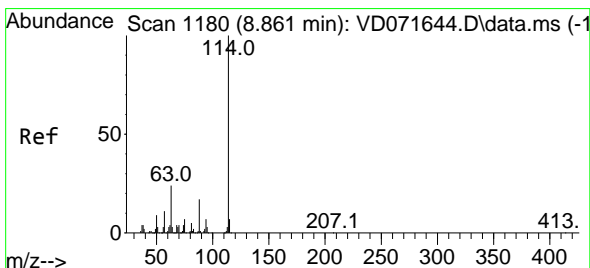
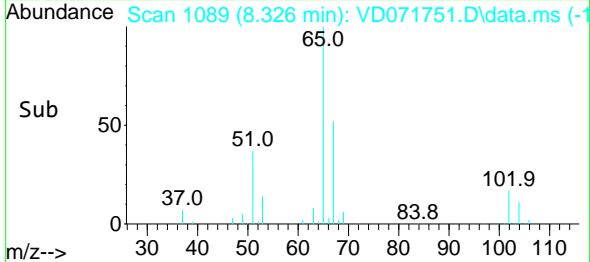
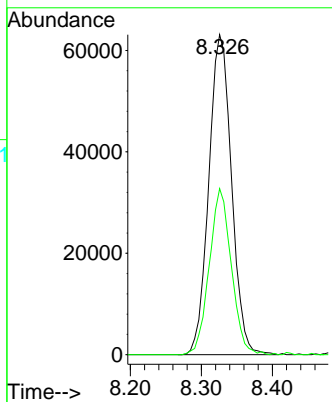
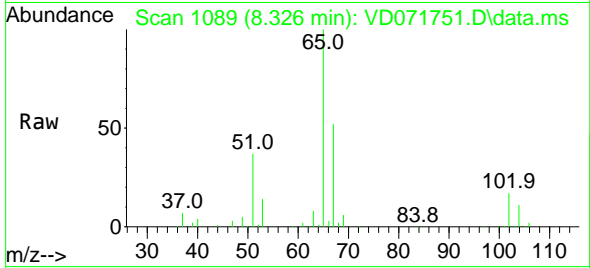
Instrument :

MSVOA\_D

ClientSampleId :

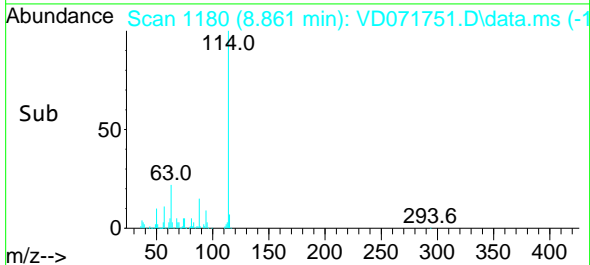
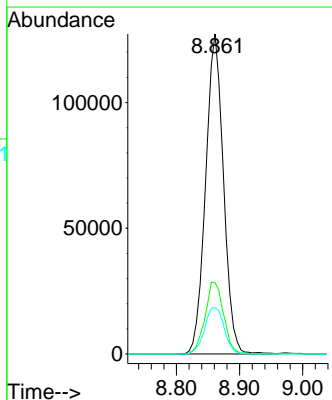
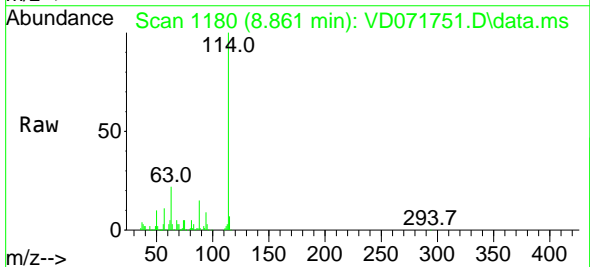
MTR-SOIL-15

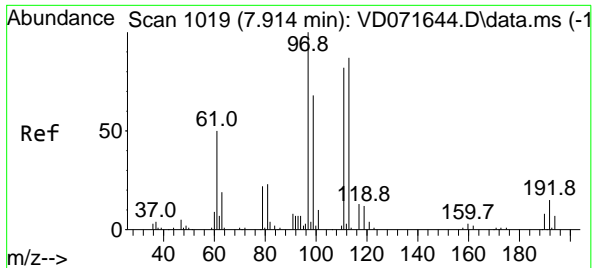
Tgt Ion: 65 Resp: 140327  
 Ion Ratio Lower Upper  
 65 100  
 67 50.2 0.0 101.2



#34  
 1,4-Difluorobenzene  
 Concen: 50.000 ug/l  
 RT: 8.861 min Scan# 1180  
 Delta R.T. -0.006 min  
 Lab File: VD071751.D  
 Acq: 19 Jan 2022 18:33

Tgt Ion: 114 Resp: 250167  
 Ion Ratio Lower Upper  
 114 100  
 63 22.3 0.0 46.2  
 88 14.5 0.0 32.0



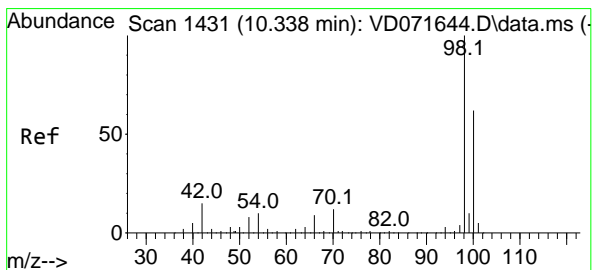
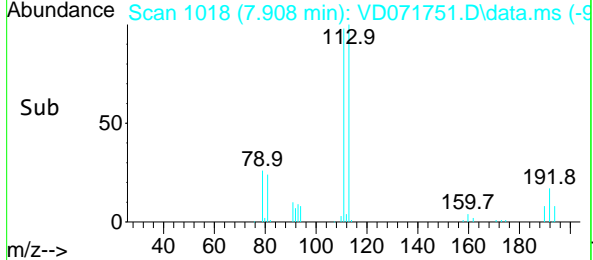
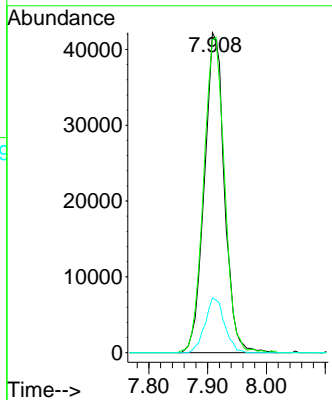
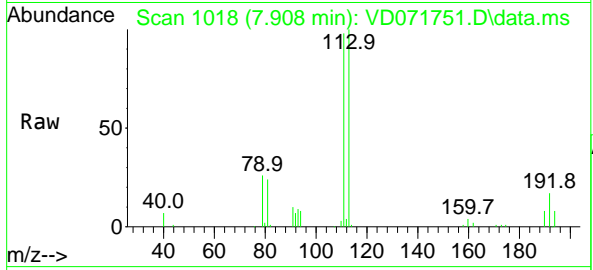


#35  
 Dibromofluoromethane  
 Concen: 60.398 ug/l  
 RT: 7.908 min Scan# 1019  
 Delta R.T. -0.006 min  
 Lab File: VD071751.D  
 Acq: 19 Jan 2022 18:33

Instrument : MSVOA\_D  
 ClientSampleId : MTR-SOIL-15

Tgt Ion: 113 Resp: 99855

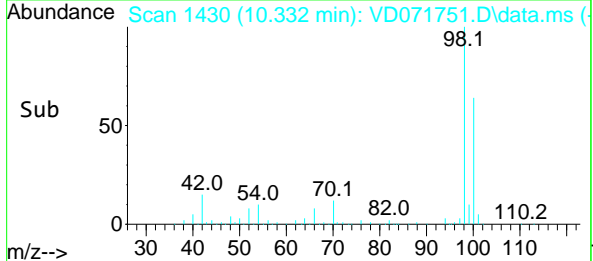
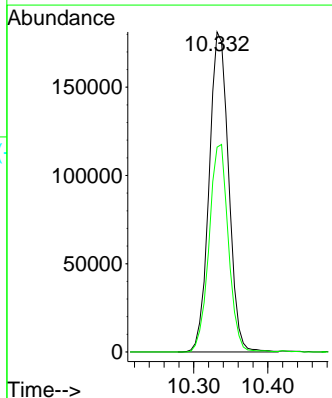
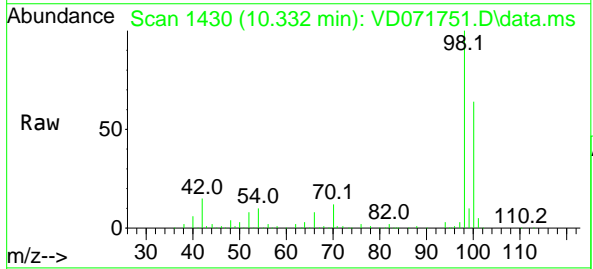
Ion	Ratio	Lower	Upper
113	100		
111	102.6	82.2	123.4
192	16.6	14.2	21.2

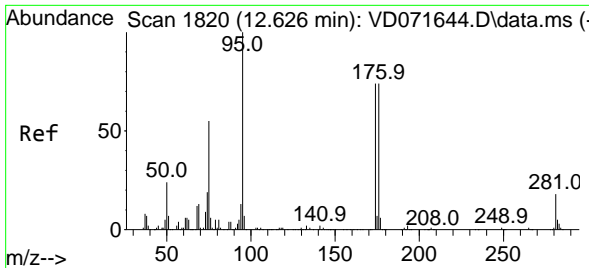


#50  
 Toluene-d8  
 Concen: 53.368 ug/l  
 RT: 10.332 min Scan# 1430  
 Delta R.T. -0.005 min  
 Lab File: VD071751.D  
 Acq: 19 Jan 2022 18:33

Tgt Ion: 98 Resp: 330285

Ion	Ratio	Lower	Upper
98	100		
100	64.3	52.1	78.1

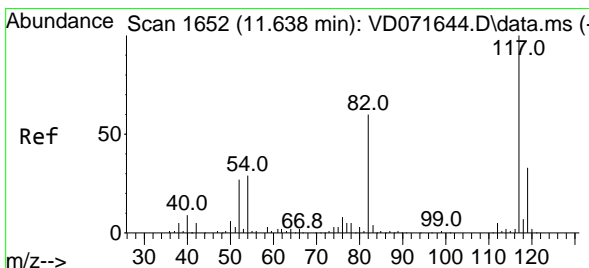
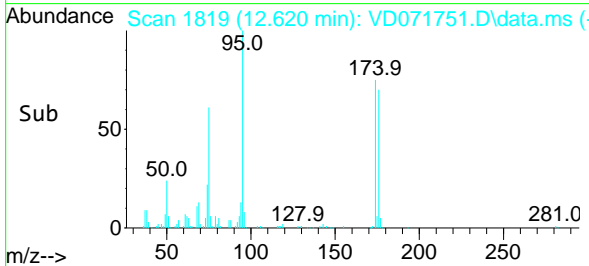
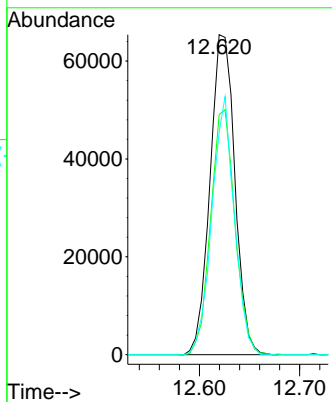
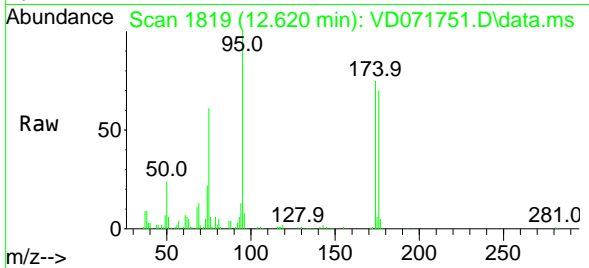




#62  
 4-Bromofluorobenzene  
 Concen: 51.654 ug/l  
 RT: 12.620 min Scan# 1819  
 Delta R.T. -0.006 min  
 Lab File: VD071751.D  
 Acq: 19 Jan 2022 18:33

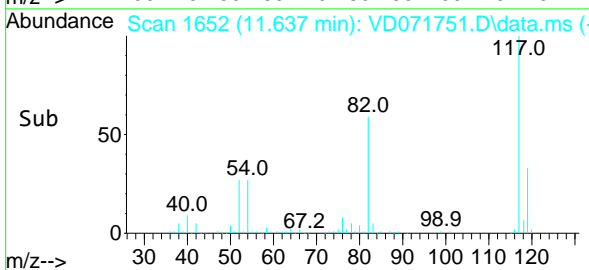
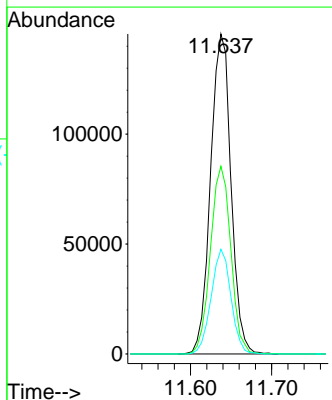
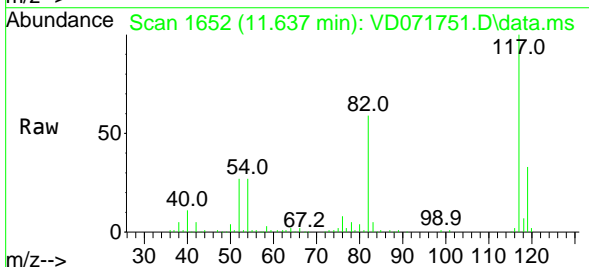
Instrument :  
 MSVOA\_D  
 ClientSampleId :  
 MTR-SOIL-15

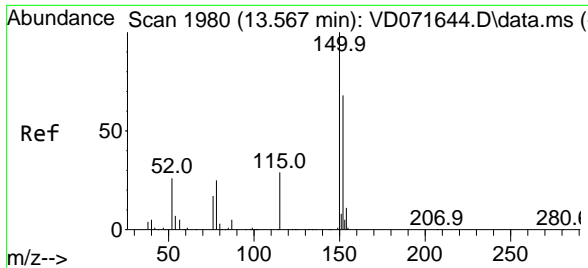
Tgt Ion: 95 Resp: 112645  
 Ion Ratio Lower Upper  
 95 100  
 174 75.1 0.0 150.0  
 176 73.0 0.0 146.4



#63  
 Chlorobenzene-d5  
 Concen: 50.000 ug/l  
 RT: 11.637 min Scan# 1652  
 Delta R.T. 0.000 min  
 Lab File: VD071751.D  
 Acq: 19 Jan 2022 18:33

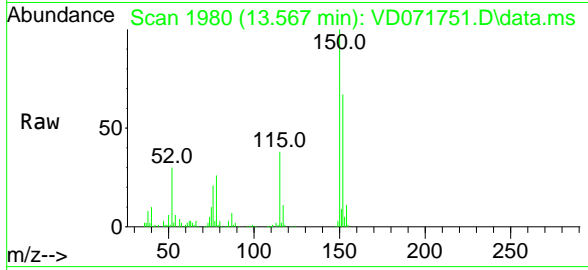
Tgt Ion:117 Resp: 254675  
 Ion Ratio Lower Upper  
 117 100  
 82 58.6 46.9 70.3  
 119 32.7 26.6 39.8





#72  
 1,4-Dichlorobenzene-d4  
 Concen: 50.000 ug/l  
 RT: 13.567 min Scan# 1980  
 Delta R.T. -0.000 min  
 Lab File: VD071751.D  
 Acq: 19 Jan 2022 18:33

Instrument : MSVOA\_D  
 ClientSampleId : MTR-SOIL-15



Tgt Ion:152 Resp: 117206

Ion	Ratio	Lower	Upper
152	100		
115	59.7	31.5	94.5
150	156.5	0.0	348.0

