

Data Path : Z:\voasrv\HPCHEM1\MSVOA_D\Data\VD012323\
 Data File : VD075169.D
 Acq On : 23 Jan 2023 12:14
 Operator : KP/SY
 Sample : VD0123SBL01
 Misc : 5.00G/5.00ml/MSVOA_D/SOIL
 ALS Vial : 4 Sample Multiplier: 1

Instrument :
 MSVOA_D
 ClientSampleId :
 VD0123SBL01

Quant Time: Jan 23 14:03:54 2023
 Quant Method : Z:\voasrv\HPCHEM1\MSVOA_D\Method\82D011823S.M
 Quant Title : SW846 8260
 QLast Update : Thu Jan 19 01:32:27 2023
 Response via : Initial Calibration

Compound	R.T.	QIon	Response	Conc	Units	Dev(Min)

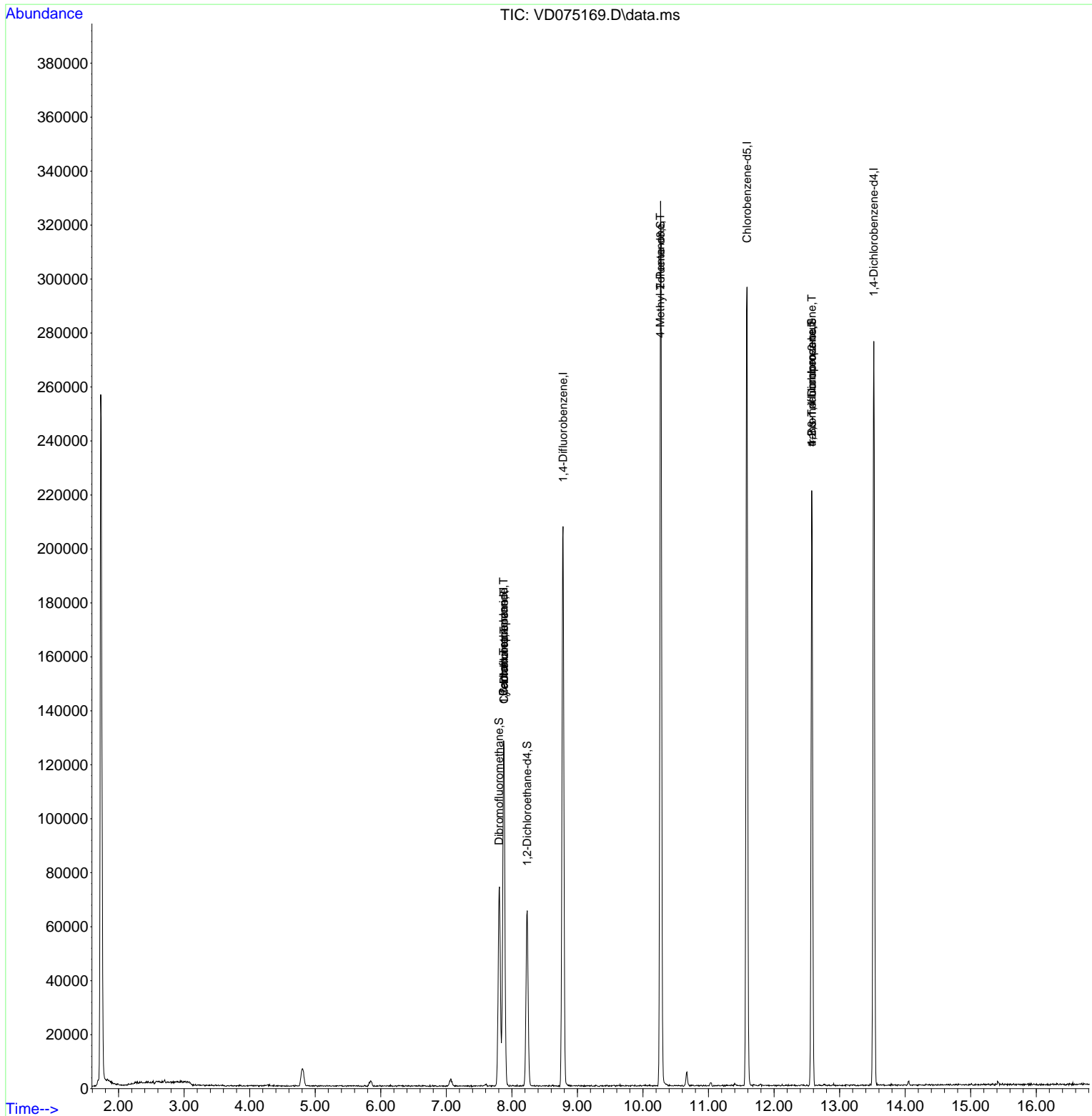
Internal Standards						
1) Pentafluorobenzene	7.875	168	95373	50.000	ug/l	0.00
34) 1,4-Difluorobenzene	8.781	114	184136	50.000	ug/l	0.00
63) Chlorobenzene-d5	11.587	117	168096	50.000	ug/l	0.00
72) 1,4-Dichlorobenzene-d4	13.522	152	71751	50.000	ug/l	0.00
System Monitoring Compounds						
33) 1,2-Dichloroethane-d4	8.234	65	50548	51.940	ug/l	0.00
Spiked Amount	50.000	Range	50 - 163	Recovery	=	103.880%
35) Dibromofluoromethane	7.805	113	53933	48.471	ug/l	0.00
Spiked Amount	50.000	Range	54 - 147	Recovery	=	96.940%
50) Toluene-d8	10.269	98	222538	50.796	ug/l	0.00
Spiked Amount	50.000	Range	49 - 140	Recovery	=	101.600%
62) 4-Bromofluorobenzene	12.575	95	70144	50.449	ug/l	0.00
Spiked Amount	50.000	Range	25 - 144	Recovery	=	100.900%
Target Compounds						
					Qvalue	
20) Methylene Chloride	4.805	84	5271	Below Cal	#	96
31) Cyclohexane	7.881	56	2218	1.136	ug/l #	14
36) 1,1-Dichloropropene	7.881	75	8286	4.635	ug/l #	46
38) Carbon Tetrachloride	7.875	117	10157	6.748	ug/l #	17
51) 4-Methyl-2-Pentanone	10.263	43	1113	1.654	ug/l #	1
76) 1,2,3-Trichloropropane	12.575	75	37600	61.875	ug/l #	100
81) trans-1,4-Dichloro-2-b...	12.575	75	37600	143.524	ug/l #	14

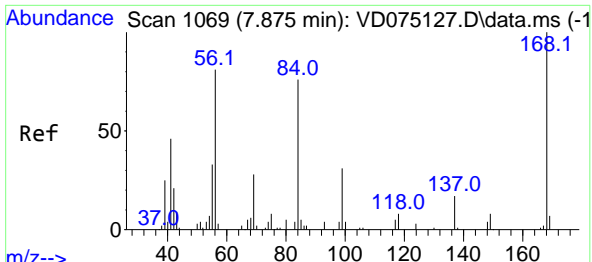
(#) = qualifier out of range (m) = manual integration (+) = signals summed

Data Path : Z:\voasrv\HPCHEM1\MSVOA_D\Data\VD012323\
 Data File : VD075169.D
 Acq On : 23 Jan 2023 12:14
 Operator : KP/SY
 Sample : VD0123SBL01
 Misc : 5.00G/5.00ml/MSVOA_D/SOIL
 ALS Vial : 4 Sample Multiplier: 1

Instrument :
 MSVOA_D
 ClientSampleId :
 VD0123SBL01

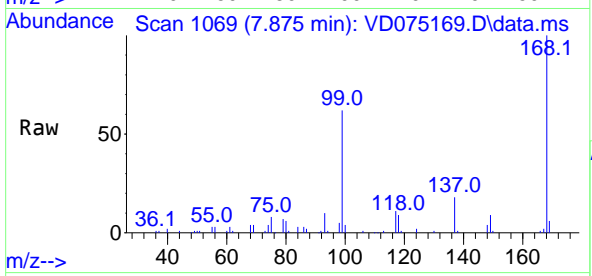
Quant Time: Jan 23 14:03:54 2023
 Quant Method : Z:\voasrv\HPCHEM1\MSVOA_D\Method\82D011823S.M
 Quant Title : SW846 8260
 QLast Update : Thu Jan 19 01:32:27 2023
 Response via : Initial Calibration



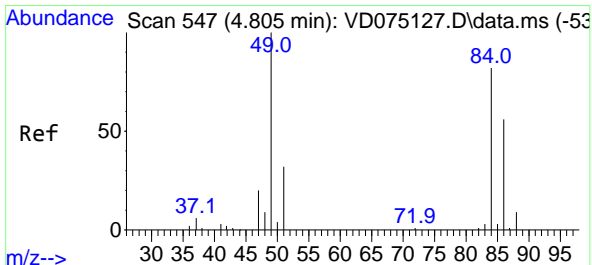
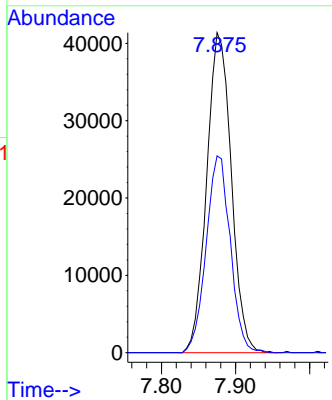
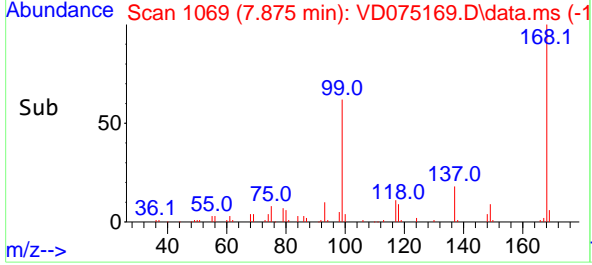


#1
 Pentafluorobenzene
 Concen: 50.000 ug/l
 RT: 7.875 min Scan# 1069
 Delta R.T. 0.000 min
 Lab File: VD075169.D
 Acq: 23 Jan 2023 12:14

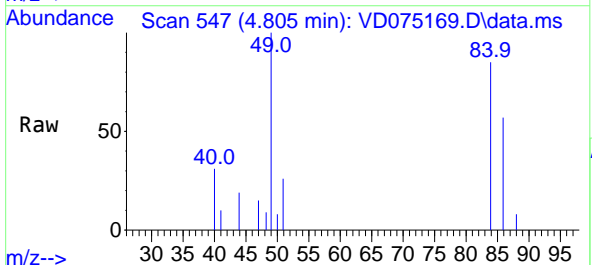
Instrument : MSVOA_D
 ClientSampleId : VD0123SBL01



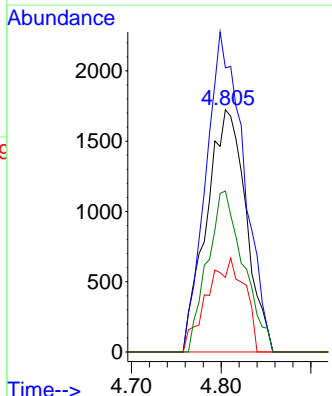
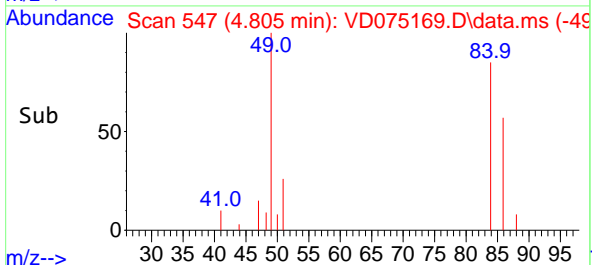
Tgt Ion:168 Resp: 95373
 Ion Ratio Lower Upper
 168 100
 99 61.5 45.2 67.8

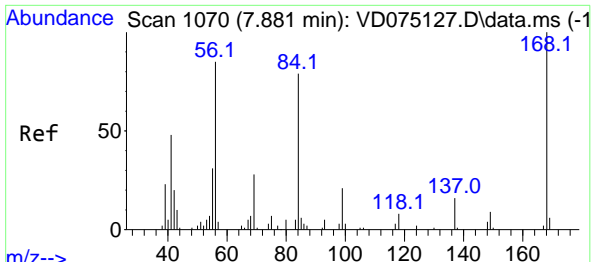


#20
 Methylene Chloride
 Concen: Below Cal
 RT: 4.805 min Scan# 547
 Delta R.T. -0.000 min
 Lab File: VD075169.D
 Acq: 23 Jan 2023 12:14



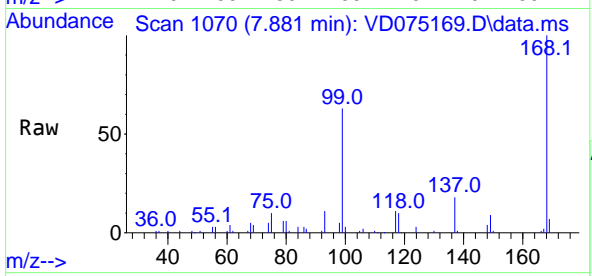
Tgt Ion: 84 Resp: 5271
 Ion Ratio Lower Upper
 84 100
 49 117.3 97.0 145.6
 51 30.8 30.9 46.3#
 86 66.4 54.0 81.0





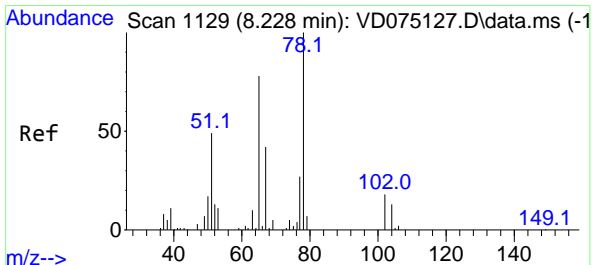
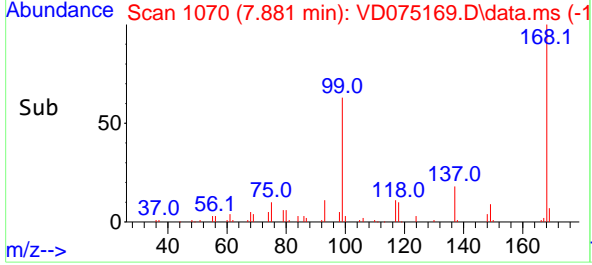
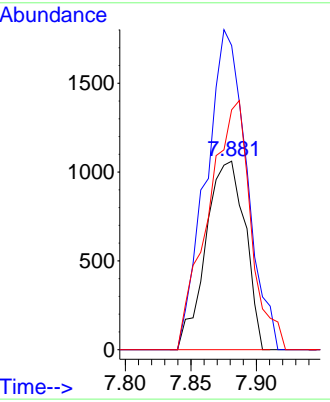
#31
 Cyclohexane
 Concen: 1.136 ug/l
 RT: 7.881 min Scan# 1130
 Delta R.T. -0.000 min
 Lab File: VD075169.D
 Acq: 23 Jan 2023 12:14

Instrument : MSVOA_D
 ClientSampleId : VD0123SBL01



Tgt Ion: 56 Resp: 2218

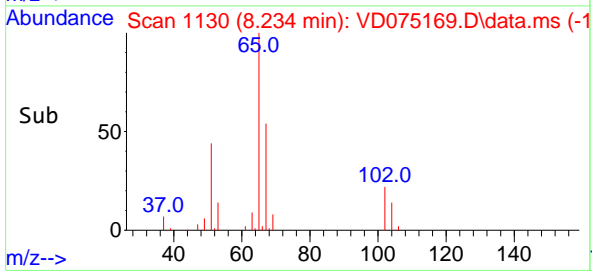
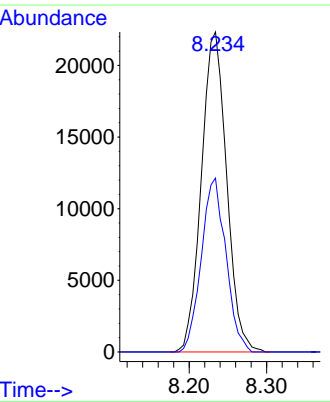
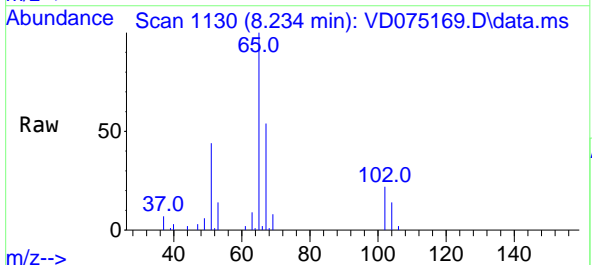
Ion	Ratio	Lower	Upper
56	100		
69	161.5	26.6	40.0#
84	127.3	74.1	111.1#

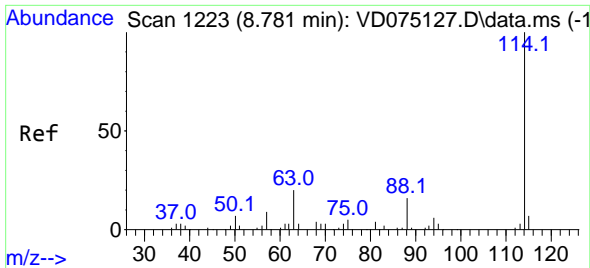


#33
 1,2-Dichloroethane-d4
 Concen: 51.940 ug/l
 RT: 8.234 min Scan# 1130
 Delta R.T. 0.006 min
 Lab File: VD075169.D
 Acq: 23 Jan 2023 12:14

Tgt Ion: 65 Resp: 50548

Ion	Ratio	Lower	Upper
65	100		
67	52.9	0.0	105.2

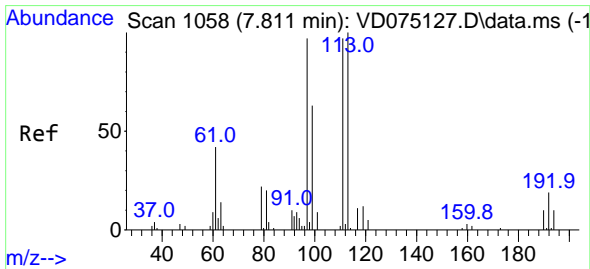
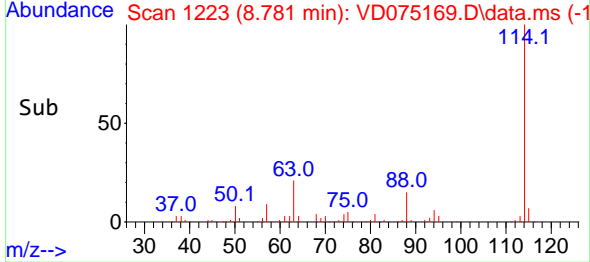
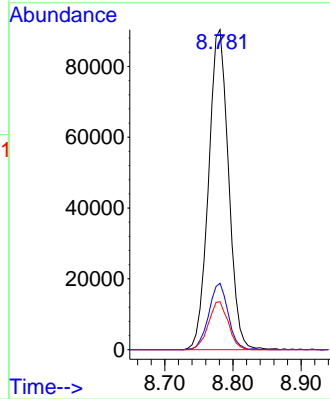
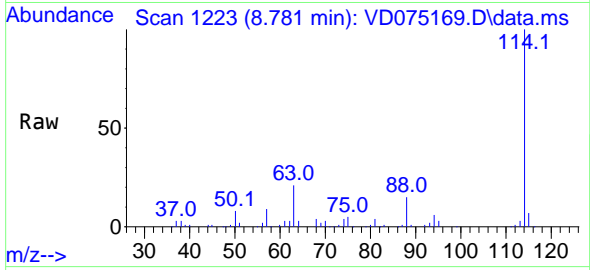




#34
 1,4-Difluorobenzene
 Concen: 50.000 ug/l
 RT: 8.781 min Scan# 11
 Delta R.T. -0.000 min
 Lab File: VD075169.D
 Acq: 23 Jan 2023 12:14

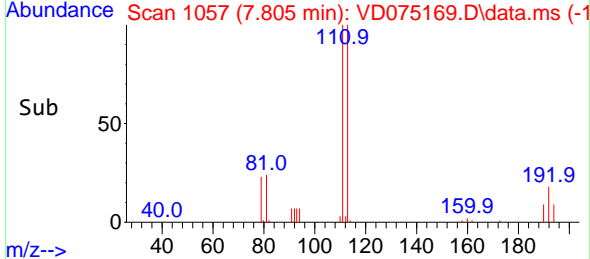
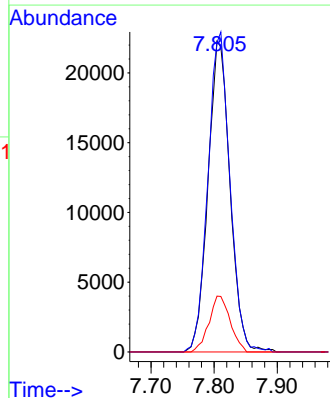
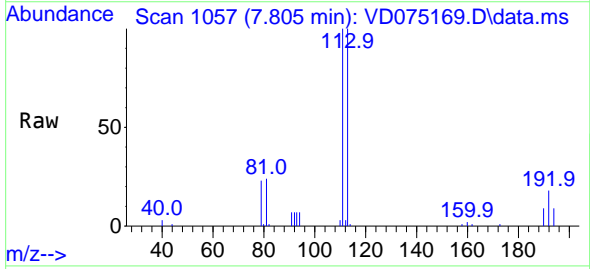
Instrument : MSVOA_D
 ClientSampleId : VD0123SBL01

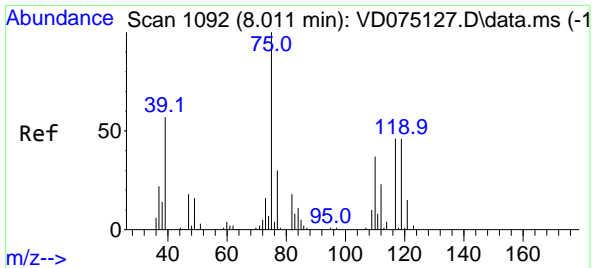
Tgt Ion:114 Resp: 184136
 Ion Ratio Lower Upper
 114 100
 63 20.8 0.0 40.2
 88 15.0 0.0 32.2



#35
 Dibromofluoromethane
 Concen: 48.471 ug/l
 RT: 7.805 min Scan# 1057
 Delta R.T. -0.006 min
 Lab File: VD075169.D
 Acq: 23 Jan 2023 12:14

Tgt Ion:113 Resp: 53933
 Ion Ratio Lower Upper
 113 100
 111 102.7 80.1 120.1
 192 17.3 15.4 23.0



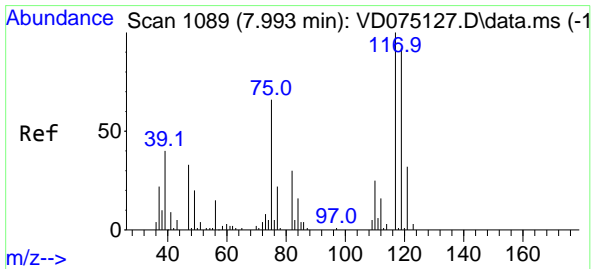
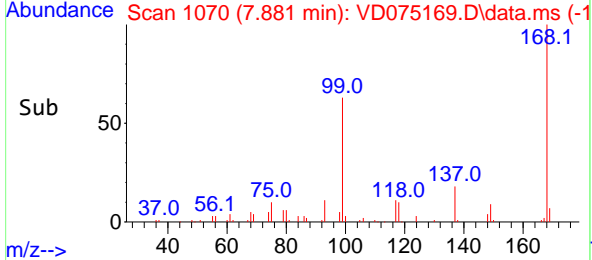
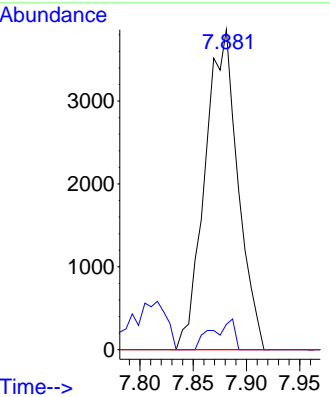
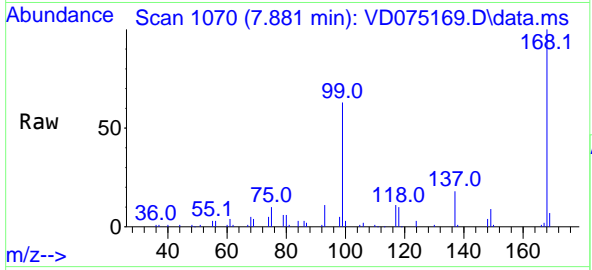


#36
 1,1-Dichloropropene
 Concen: 4.635 ug/l
 RT: 7.881 min Scan# 1069
 Delta R.T. -0.129 min
 Lab File: VD075169.D
 Acq: 23 Jan 2023 12:14

Instrument : MSVOA_D
 ClientSampleId : VD0123SBL01

Tgt Ion: 75 Resp: 8286

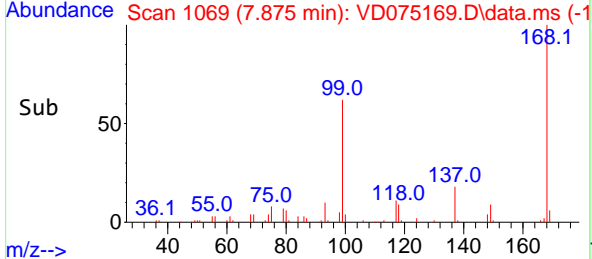
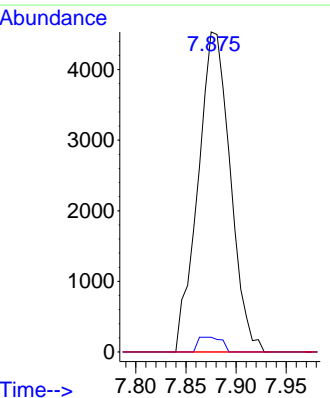
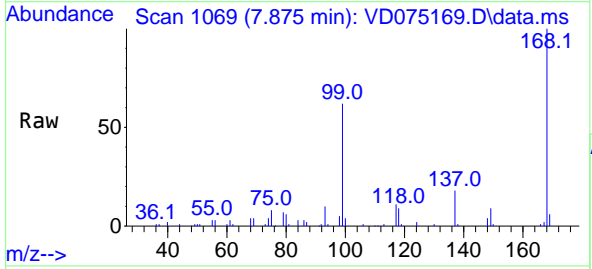
Ion	Ratio	Lower	Upper
75	100		
110	6.3	18.1	54.4#
77	0.0	25.1	37.7#

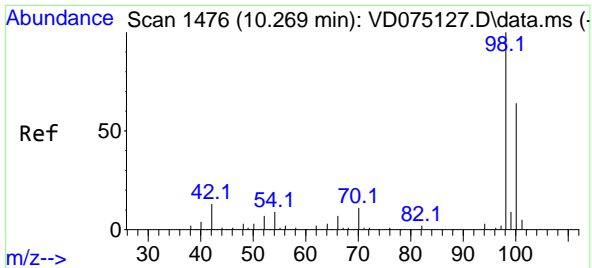


#38
 Carbon Tetrachloride
 Concen: 6.748 ug/l
 RT: 7.875 min Scan# 1069
 Delta R.T. -0.118 min
 Lab File: VD075169.D
 Acq: 23 Jan 2023 12:14

Tgt Ion: 117 Resp: 10157

Ion	Ratio	Lower	Upper
117	100		
119	4.6	73.6	110.4#
121	0.0	25.4	38.0#

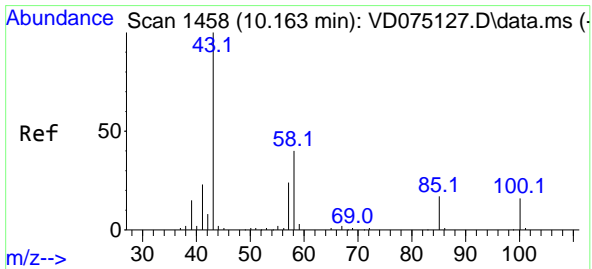
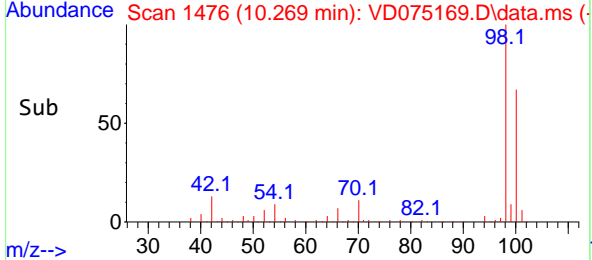
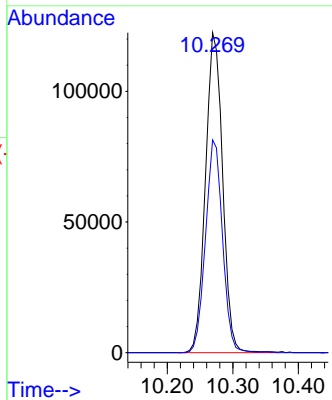
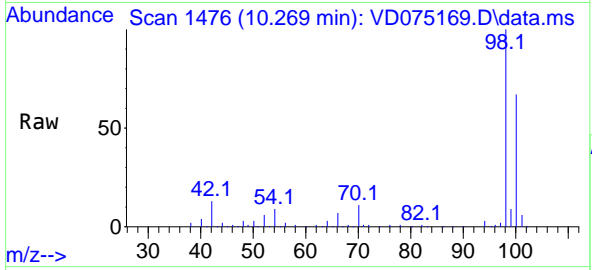




#50
 Toluene-d8
 Concen: 50.796 ug/l
 RT: 10.269 min Scan# 1476
 Delta R.T. -0.000 min
 Lab File: VD075169.D
 Acq: 23 Jan 2023 12:14

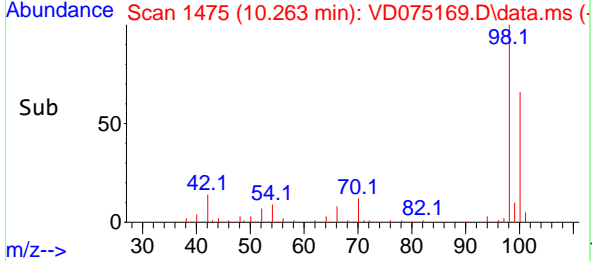
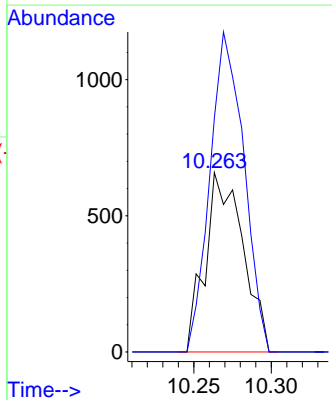
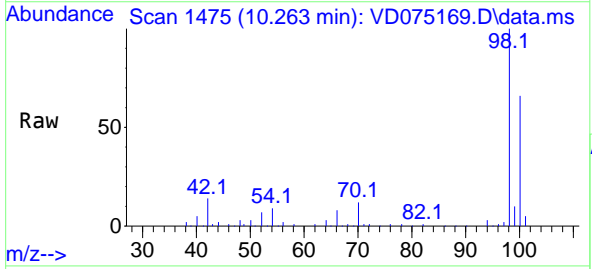
Instrument : MSVOA_D
 ClientSampleId : VD0123SBL01

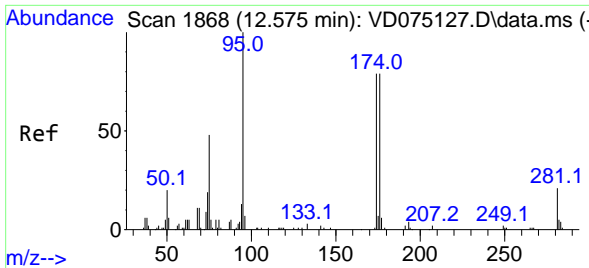
Tgt Ion: 98 Resp: 222538
 Ion Ratio Lower Upper
 98 100
 100 66.1 52.7 79.1



#51
 4-Methyl-2-Pentanone
 Concen: 1.654 ug/l
 RT: 10.263 min Scan# 1475
 Delta R.T. 0.100 min
 Lab File: VD075169.D
 Acq: 23 Jan 2023 12:14

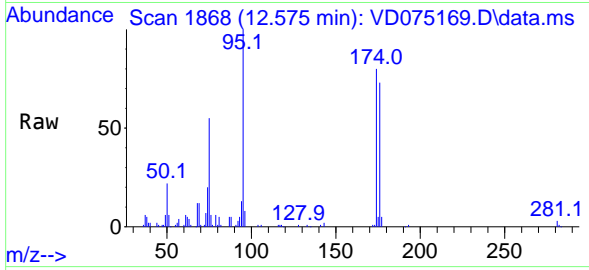
Tgt Ion: 43 Resp: 1113
 Ion Ratio Lower Upper
 43 100
 58 160.6 31.4 47.0#





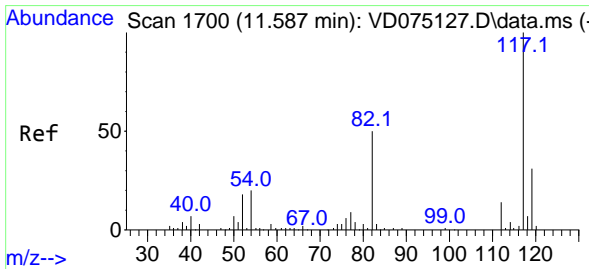
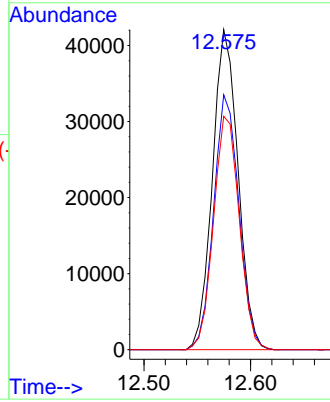
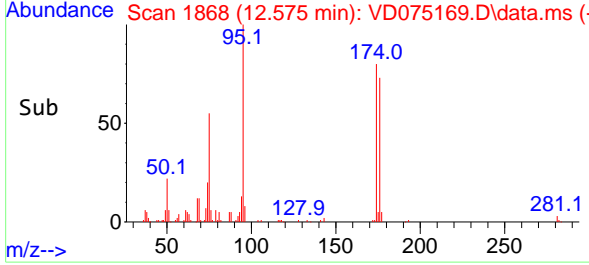
#62
 4-Bromofluorobenzene
 Concen: 50.449 ug/l
 RT: 12.575 min Scan# 1868
 Delta R.T. -0.000 min
 Lab File: VD075169.D
 Acq: 23 Jan 2023 12:14

Instrument : MSVOA_D
 ClientSampleId : VD0123SBL01

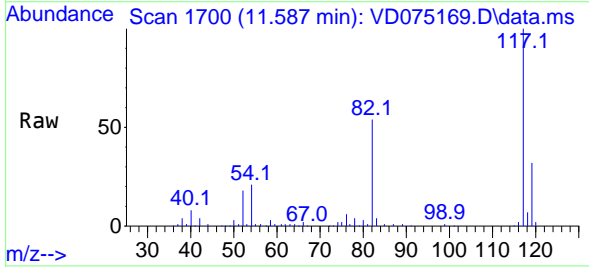


Tgt Ion: 95 Resp: 70144

Ion	Ratio	Lower	Upper
95	100		
174	78.7	0.0	161.2
176	73.5	0.0	160.2

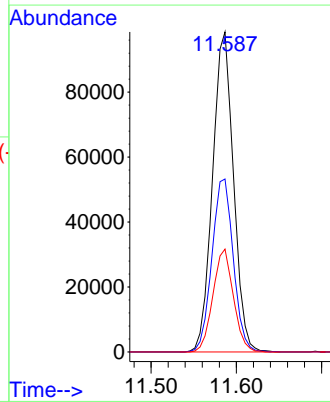
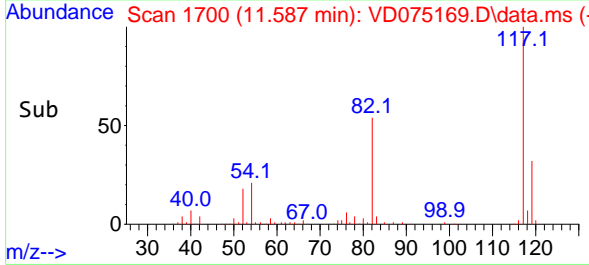


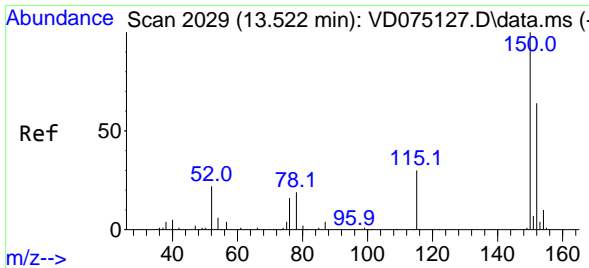
#63
 Chlorobenzene-d5
 Concen: 50.000 ug/l
 RT: 11.587 min Scan# 1700
 Delta R.T. -0.000 min
 Lab File: VD075169.D
 Acq: 23 Jan 2023 12:14



Tgt Ion: 117 Resp: 168096

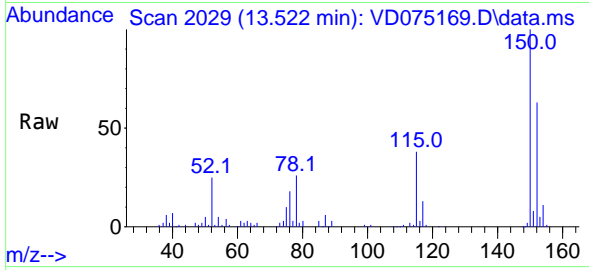
Ion	Ratio	Lower	Upper
117	100		
82	54.0	39.6	59.4
119	32.2	24.6	37.0



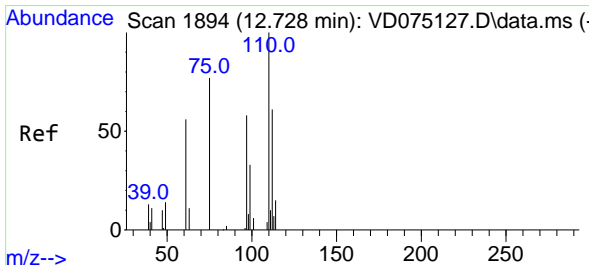
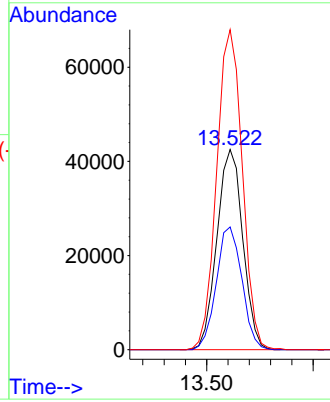
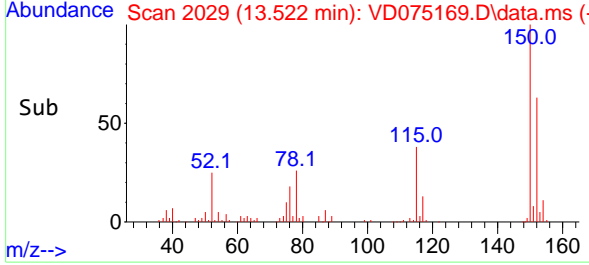


#72
 1,4-Dichlorobenzene-d4
 Concen: 50.000 ug/l
 RT: 13.522 min Scan# 2029
 Delta R.T. -0.000 min
 Lab File: VD075169.D
 Acq: 23 Jan 2023 12:14

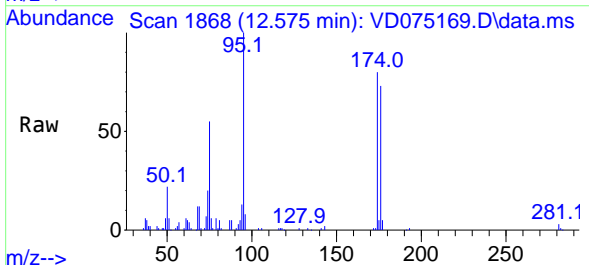
Instrument : MSVOA_D
 ClientSampleId : VD0123SBL01



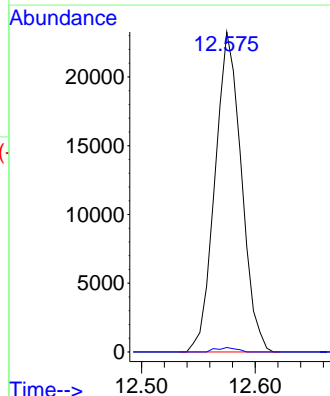
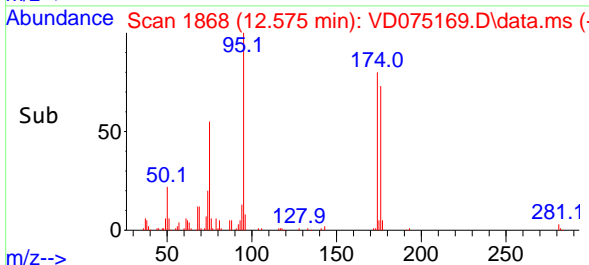
Tgt Ion:152 Resp: 71751
 Ion Ratio Lower Upper
 152 100
 115 60.6 28.8 86.4
 150 158.2 0.0 348.6

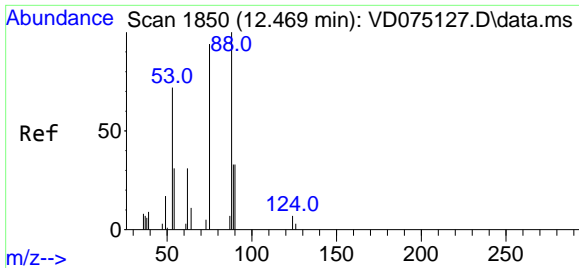


#76
 1,2,3-Trichloropropane
 Concen: 61.875 ug/l
 RT: 12.575 min Scan# 1868
 Delta R.T. -0.153 min
 Lab File: VD075169.D
 Acq: 23 Jan 2023 12:14



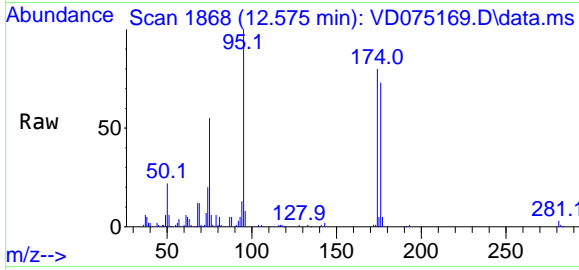
Tgt Ion: 75 Resp: 37600
 Ion Ratio Lower Upper
 75 100
 77 1.1 0.0 0.0#





#81
 trans-1,4-Dichloro-2-butene
 Concen: 143.524 ug/l
 RT: 12.575 min Scan# 11
 Delta R.T. 0.106 min
 Lab File: VD075169.D
 Acq: 23 Jan 2023 12:14

Instrument :
 MSVOA_D
 ClientSampleId :
 VD0123SBL01



Tgt Ion: 75 Resp: 37600

Ion	Ratio	Lower	Upper
75	100		
53	0.0	70.5	105.7#
89	0.0	34.6	52.0#

