

Data Path : Z:\voasrv\HPCHEM1\MSVOA\_D\Data\VD012324\  
 Data File : VD078210.D  
 Acq On : 23 Jan 2024 16:08  
 Operator : RP/MD  
 Sample : P1188-02RE  
 Misc : 4.29G/5.0ml/MSVOA\_D/SOIL/B  
 ALS Vial : 10 Sample Multiplier: 1

Instrument :  
 MSVOA\_D  
 ClientSampleId :  
 SOUTH-JERSEY-PORT-SAMPLE-SET-2-B

Quant Time: Jan 24 00:23:01 2024  
 Quant Method : Z:\voasrv\HPCHEM1\MSVOA\_D\Method\82D012224S.M  
 Quant Title : SW846 8260  
 QLast Update : Tue Jan 23 05:43:07 2024  
 Response via : Initial Calibration

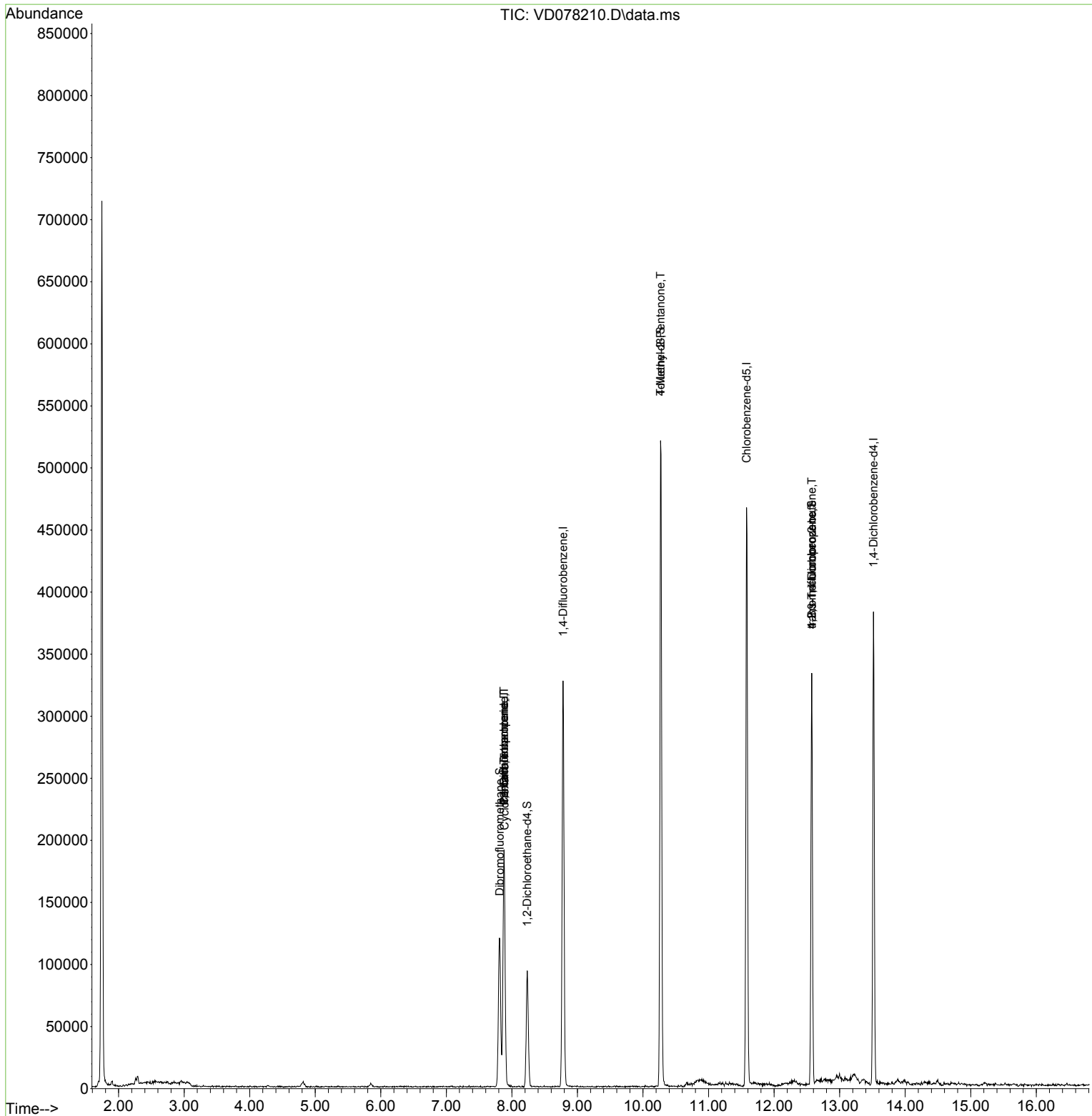
Compound	R.T.	QIon	Response	Conc	Units	Dev(Min)
-----						
Internal Standards						
1) Pentafluorobenzene	7.881	168	140991	50.000	ug/l	# 0.00
34) 1,4-Difluorobenzene	8.781	114	289449	50.000	ug/l	0.00
63) Chlorobenzene-d5	11.581	117	275322	50.000	ug/l	0.00
72) 1,4-Dichlorobenzene-d4	13.516	152	97608	50.000	ug/l	0.00
System Monitoring Compounds						
33) 1,2-Dichloroethane-d4	8.234	65	70864	44.027	ug/l	0.00
Spiked Amount	50.000	Range	50 - 163	Recovery	=	88.060%
35) Dibromofluoromethane	7.816	113	89139	46.793	ug/l	0.00
Spiked Amount	50.000	Range	54 - 147	Recovery	=	93.580%
50) Toluene-d8	10.269	98	363266	48.160	ug/l	0.00
Spiked Amount	50.000	Range	58 - 134	Recovery	=	96.320%
62) 4-Bromofluorobenzene	12.575	95	101988	46.624	ug/l	0.00
Spiked Amount	50.000	Range	30 - 143	Recovery	=	93.240%
Target Compounds						
						Qvalue
3) Chloromethane	2.158	50	221	Below Cal	#	41
16) Acetone	3.999	43	63	Below Cal	#	32
20) Methylene Chloride	4.810	84	3178	Below Cal		88
31) Cyclohexane	7.887	56	3187	1.071	ug/l	# 60
36) 1,1-Dichloropropene	7.881	75	11968	3.820	ug/l	# 47
38) Carbon Tetrachloride	7.881	117	15438	4.990	ug/l	# 14
51) 4-Methyl-2-Pentanone	10.269	43	1667	1.485	ug/l	# 1
76) 1,2,3-Trichloropropane	12.575	75	53923	57.599	ug/l	# 100
81) trans-1,4-Dichloro-2-b...	12.575	75	53923	124.070	ug/l	# 17
-----						

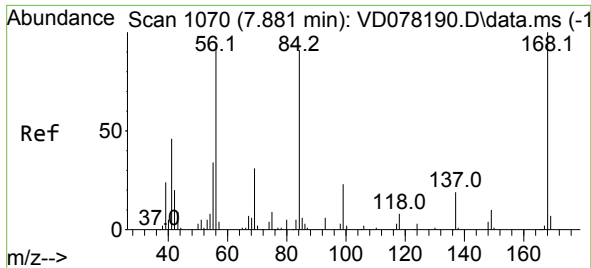
(#) = qualifier out of range (m) = manual integration (+) = signals summed

Data Path : Z:\voasrv\HPCHEM1\MSVOA\_D\Data\VD012324\  
 Data File : VD078210.D  
 Acq On : 23 Jan 2024 16:08  
 Operator : RP/MD  
 Sample : P1188-02RE  
 Misc : 4.29G/5.0ml/MSVOA\_D/SOIL/B  
 ALS Vial : 10 Sample Multiplier: 1

Instrument :  
 MSVOA\_D  
 ClientSampleId :  
 SOUTH-JERSEY-PORT-SAMPLE-SET-2-B

Quant Time: Jan 24 00:23:01 2024  
 Quant Method : Z:\voasrv\HPCHEM1\MSVOA\_D\Method\82D012224S.M  
 Quant Title : SW846 8260  
 QLast Update : Tue Jan 23 05:43:07 2024  
 Response via : Initial Calibration

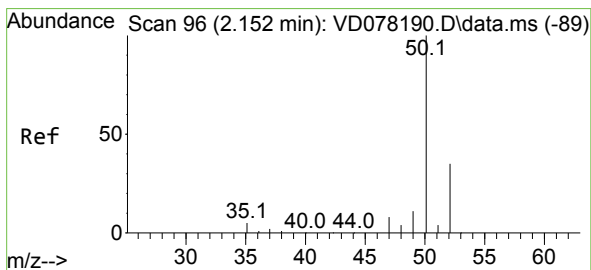
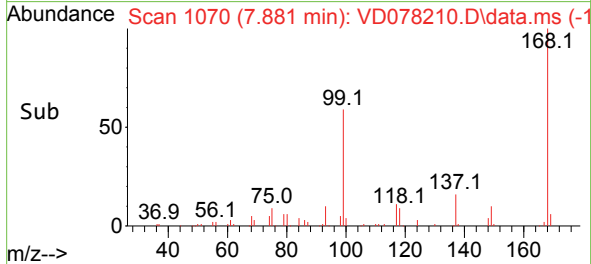
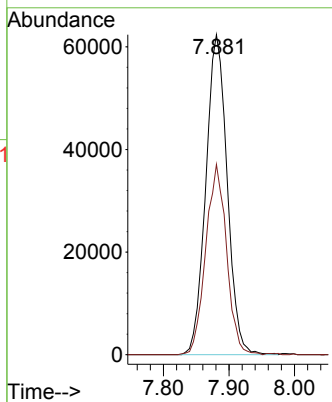
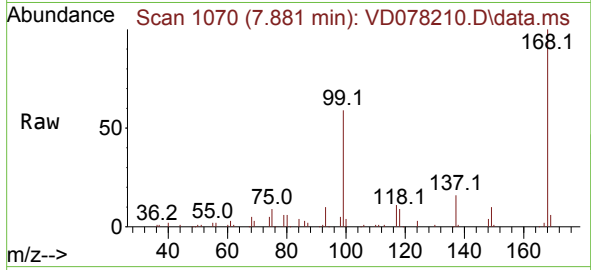




#1  
 Pentafluorobenzene  
 Concen: 50.000 ug/l  
 RT: 7.881 min Scan# 10  
 Delta R.T. -0.000 min  
 Lab File: VD078210.D  
 Acq: 23 Jan 2024 16:08

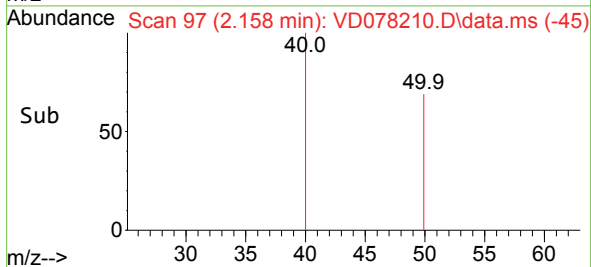
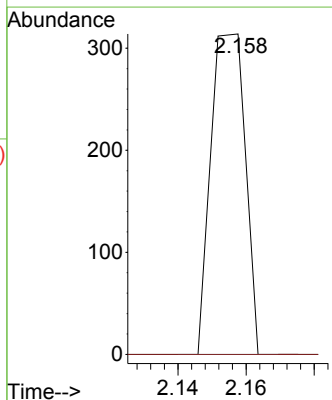
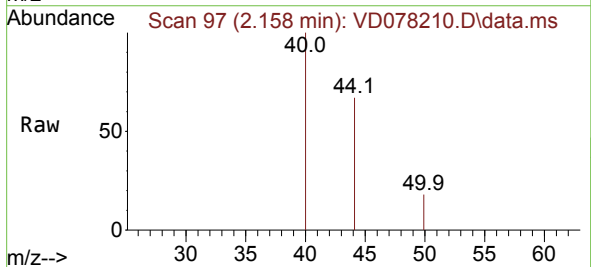
Instrument : MSVOA\_D  
 ClientSampleId : SOUTH-JERSEY-PORT-SAMPLE-SET-2-B

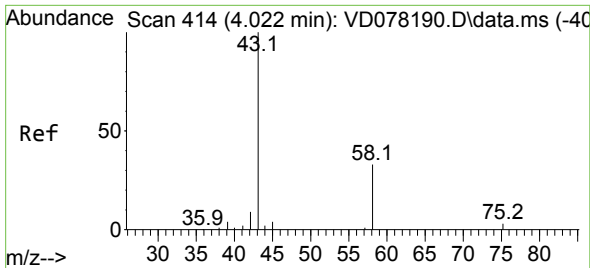
Tgt Ion:168 Resp: 140991  
 Ion Ratio Lower Upper  
 168 100  
 99 59.5 36.7 55.1#



#3  
 Chloromethane  
 Concen: Below Cal  
 RT: 2.158 min Scan# 97  
 Delta R.T. 0.006 min  
 Lab File: VD078210.D  
 Acq: 23 Jan 2024 16:08

Tgt Ion: 50 Resp: 221  
 Ion Ratio Lower Upper  
 50 100  
 52 0.0 26.6 40.0#

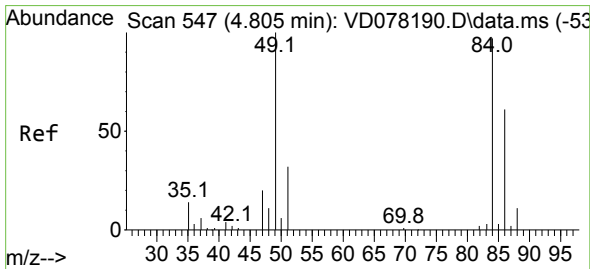
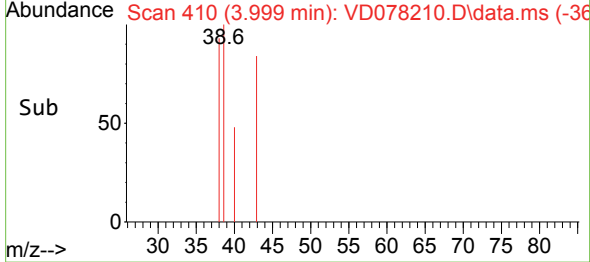
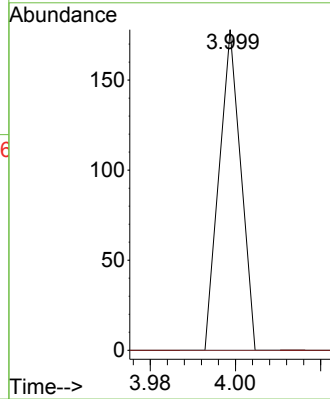
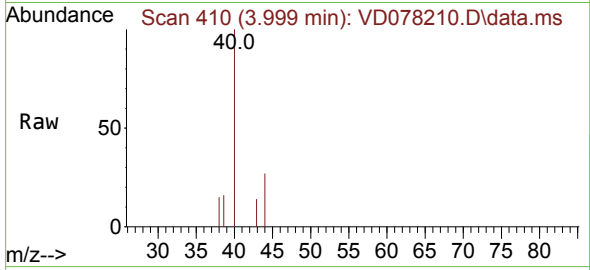




#16  
 Acetone  
 Concen: Below Cal  
 RT: 3.999 min Scan# 41  
 Delta R.T. -0.023 min  
 Lab File: VD078210.D  
 Acq: 23 Jan 2024 16:08

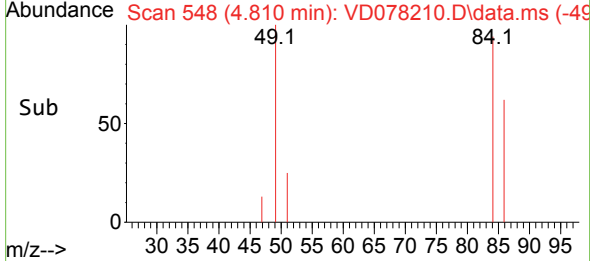
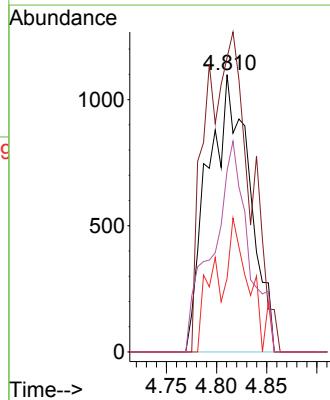
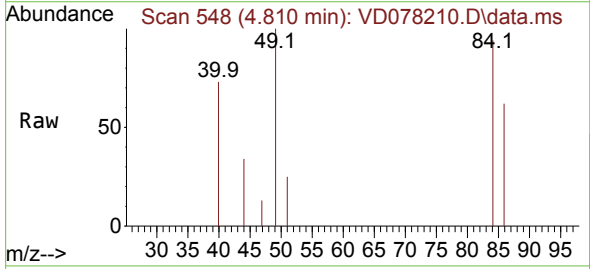
Instrument : MSVOA\_D  
 ClientSampleId : SOUTH-JERSEY-PORT-SAMPLE-SET-2-B

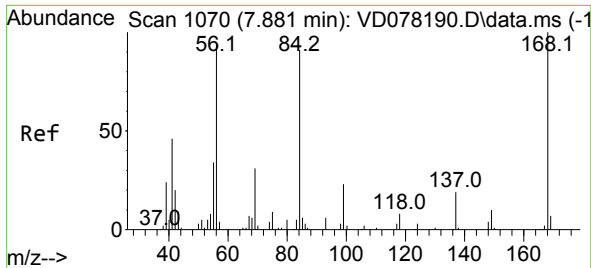
Tgt Ion: 43 Resp: 63  
 Ion Ratio Lower Upper  
 43 100  
 58 0.0 34.7 52.1#



#20  
 Methylene Chloride  
 Concen: Below Cal  
 RT: 4.810 min Scan# 548  
 Delta R.T. 0.005 min  
 Lab File: VD078210.D  
 Acq: 23 Jan 2024 16:08

Tgt Ion: 84 Resp: 3178  
 Ion Ratio Lower Upper  
 84 100  
 49 106.1 71.4 107.2  
 51 26.6 24.5 36.7  
 86 65.4 48.7 73.1

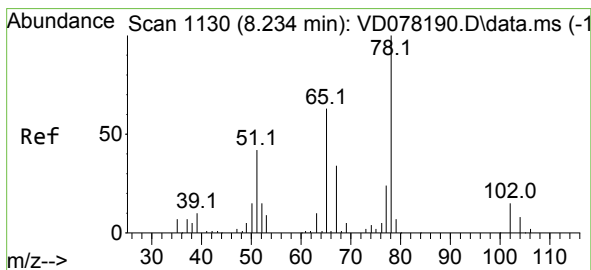
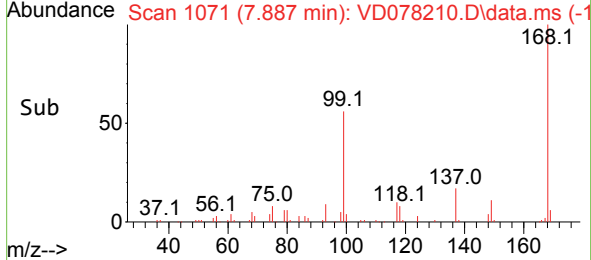
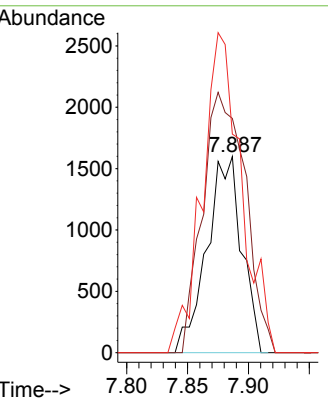
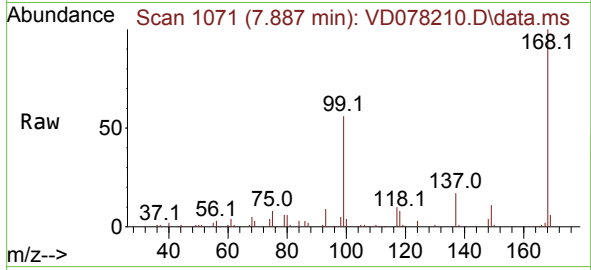




#31  
 Cyclohexane  
 Concen: 1.071 ug/l  
 RT: 7.887 min Scan# 1071  
 Delta R.T. 0.006 min  
 Lab File: VD078210.D  
 Acq: 23 Jan 2024 16:08

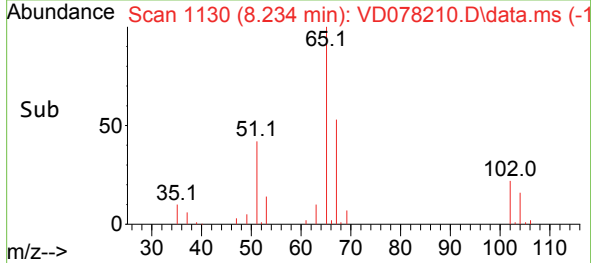
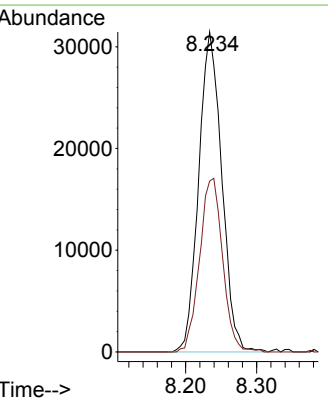
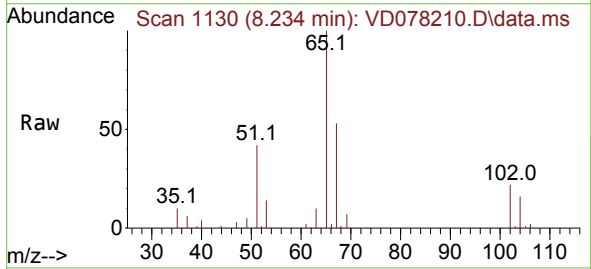
**Instrument :**  
 MSVOA\_D  
**ClientSampleId :**  
 SOUTH-JERSEY-PORT-SAMPLE-SET-2-B

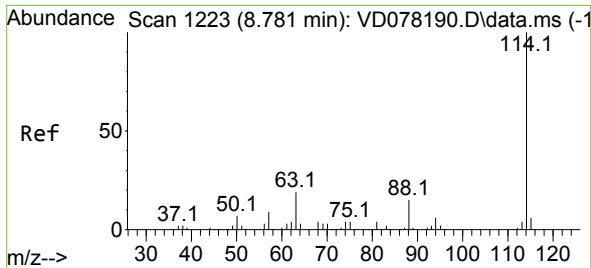
Tgt Ion	Resp	Lower	Upper
56	100		
69	119.4	28.6	43.0#
84	111.4	84.8	127.2



#33  
 1,2-Dichloroethane-d4  
 Concen: 44.027 ug/l  
 RT: 8.234 min Scan# 1130  
 Delta R.T. -0.000 min  
 Lab File: VD078210.D  
 Acq: 23 Jan 2024 16:08

Tgt Ion	Resp	Lower	Upper
65	100		
67	54.3	0.0	115.0

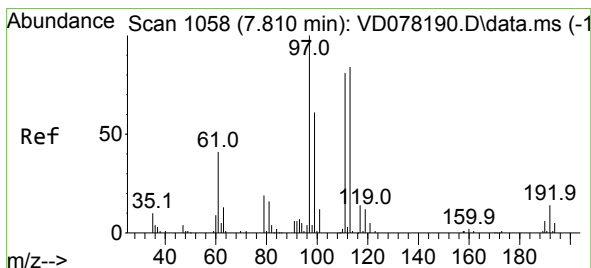
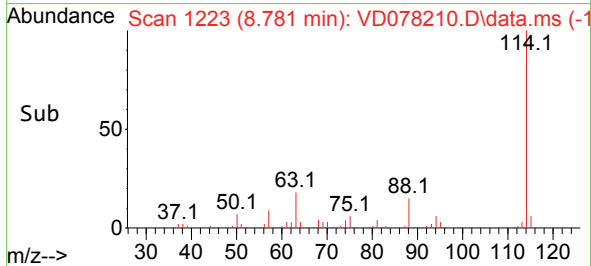
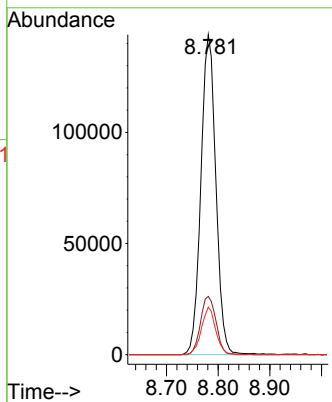
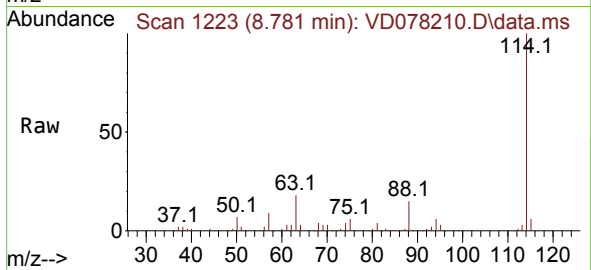




#34  
 1,4-Difluorobenzene  
 Concen: 50.000 ug/l  
 RT: 8.781 min Scan# 111  
 Delta R.T. -0.000 min  
 Lab File: VD078210.D  
 Acq: 23 Jan 2024 16:08

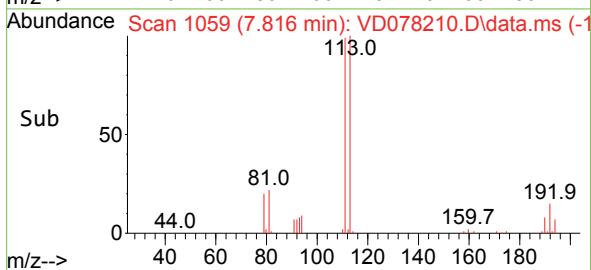
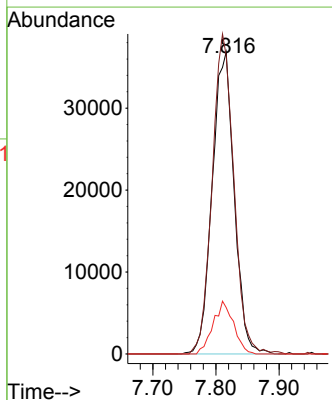
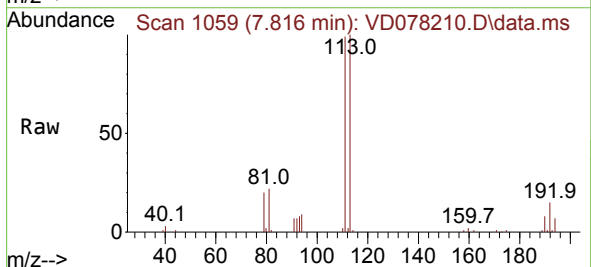
Instrument : MSVOA\_D  
 ClientSampleId : SOUTH-JERSEY-PORT-SAMPLE-SET-2-B

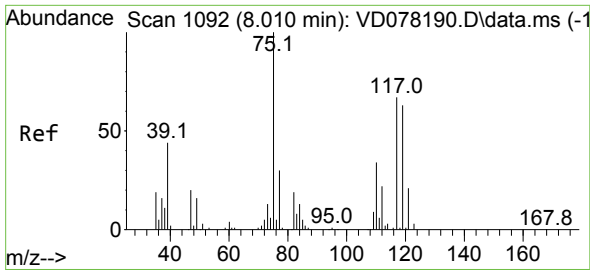
Tgt Ion	Resp	Lower	Upper
114	289449		
63	18.2	0.0	33.4
88	14.9	0.0	26.2



#35  
 Dibromofluoromethane  
 Concen: 46.793 ug/l  
 RT: 7.816 min Scan# 1059  
 Delta R.T. 0.006 min  
 Lab File: VD078210.D  
 Acq: 23 Jan 2024 16:08

Tgt Ion	Resp	Lower	Upper
113	89139		
111	104.5	84.7	127.1
192	16.3	16.8	25.2#

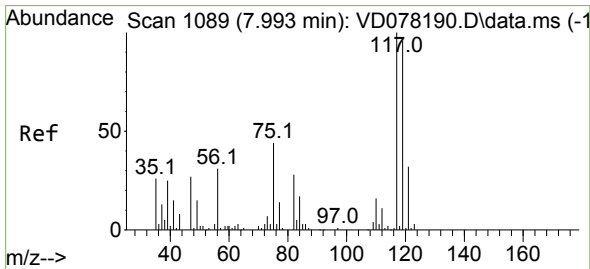
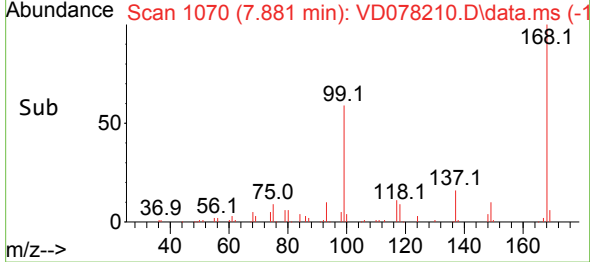
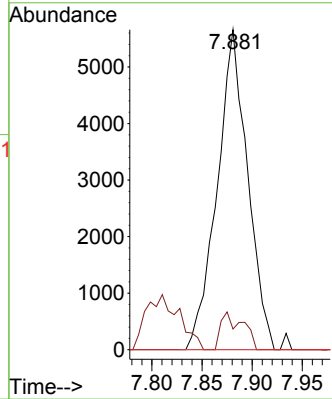
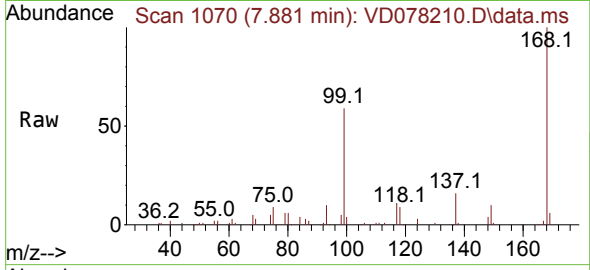




#36  
 1,1-Dichloropropene  
 Concen: 3.820 ug/l  
 RT: 7.881 min Scan# 1070  
 Delta R.T. -0.129 min  
 Lab File: VD078210.D  
 Acq: 23 Jan 2024 16:08

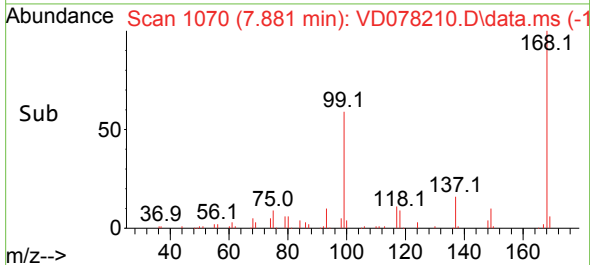
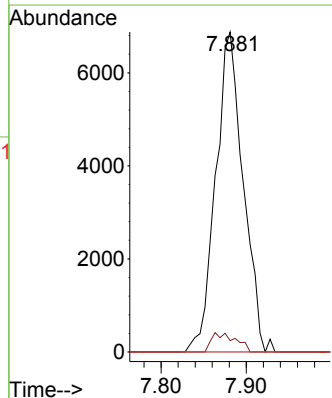
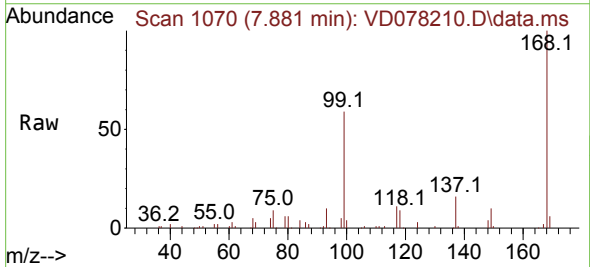
Instrument : MSVOA\_D  
 ClientSampleId : SOUTH-JERSEY-PORT-SAMPLE-SET-2-B

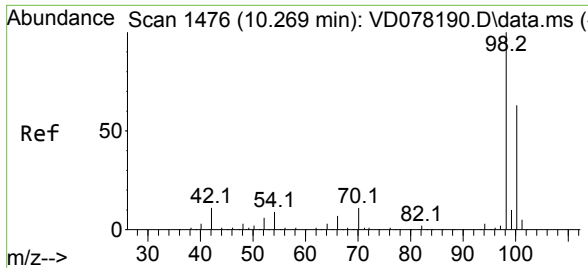
Tgt Ion	Resp	Lower	Upper
75	11968		
75	100		
110	8.4	19.9	59.6#
77	0.0	24.7	37.1#



#38  
 Carbon Tetrachloride  
 Concen: 4.990 ug/l  
 RT: 7.881 min Scan# 1070  
 Delta R.T. -0.112 min  
 Lab File: VD078210.D  
 Acq: 23 Jan 2024 16:08

Tgt Ion	Resp	Lower	Upper
117	15438		
117	100		
119	3.5	78.0	117.0#
121	0.0	24.2	36.2#

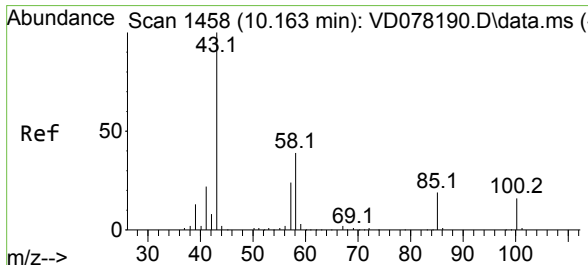
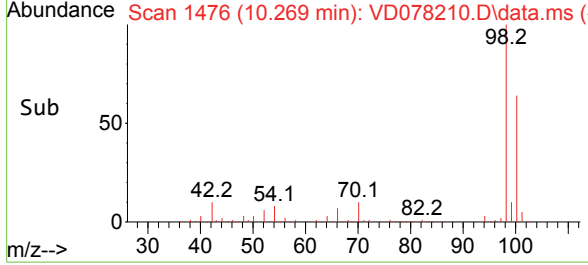
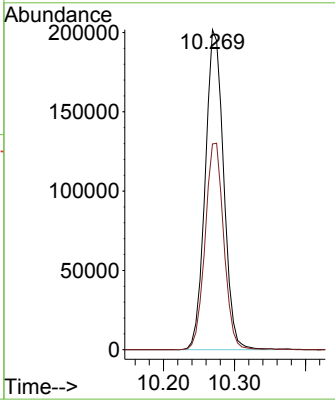
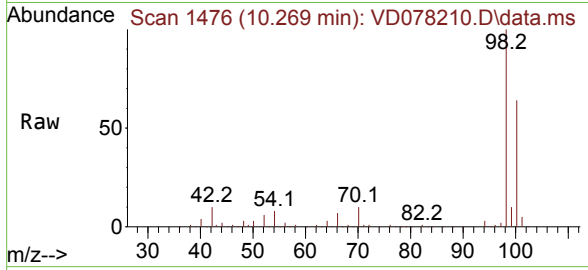




#50  
 Toluene-d8  
 Concen: 48.160 ug/l  
 RT: 10.269 min Scan# 1476  
 Delta R.T. -0.000 min  
 Lab File: VD078210.D  
 Acq: 23 Jan 2024 16:08

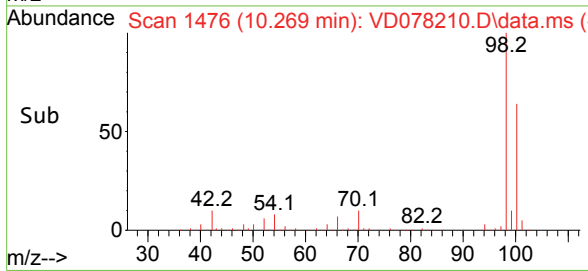
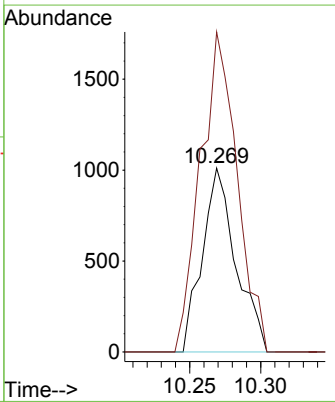
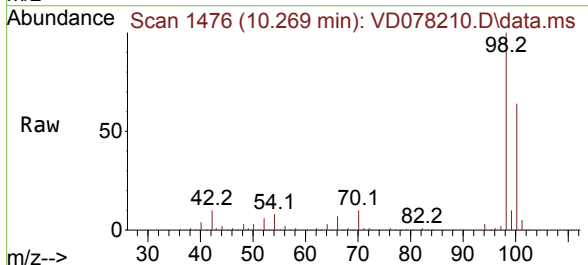
Instrument : MSVOA\_D  
 ClientSampleId : SOUTH-JERSEY-PORT-SAMPLE-SET-2-B

Tgt Ion: 98 Resp: 363266  
 Ion Ratio Lower Upper  
 98 100  
 100 65.4 50.3 75.5

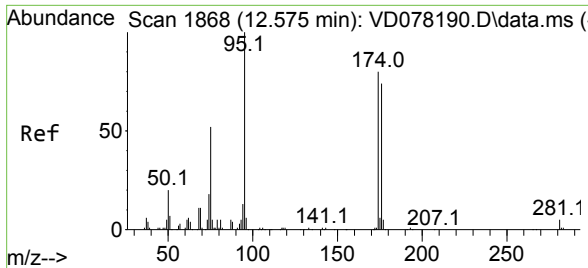


#51  
 4-Methyl-2-Pentanone  
 Concen: 1.485 ug/l  
 RT: 10.269 min Scan# 1476  
 Delta R.T. 0.106 min  
 Lab File: VD078210.D  
 Acq: 23 Jan 2024 16:08

Tgt Ion: 43 Resp: 1667  
 Ion Ratio Lower Upper  
 43 100  
 58 189.1 38.9 58.3#



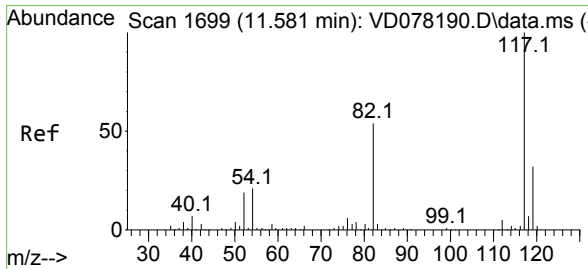
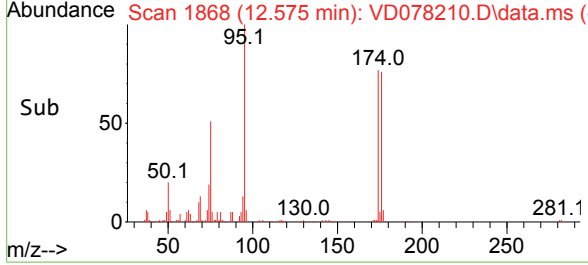
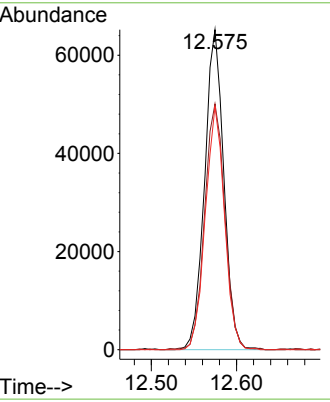
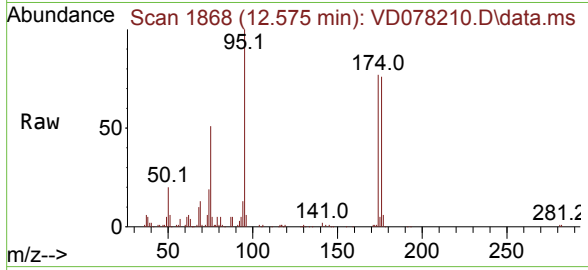




#62  
 4-Bromofluorobenzene  
 Concen: 46.624 ug/l  
 RT: 12.575 min Scan# 1868  
 Delta R.T. -0.000 min  
 Lab File: VD078210.D  
 Acq: 23 Jan 2024 16:08

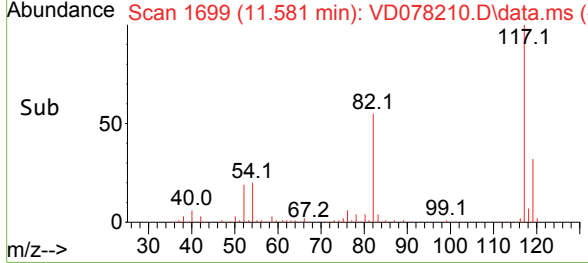
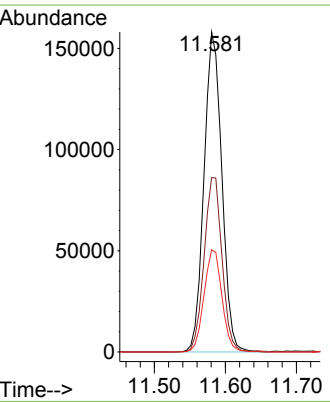
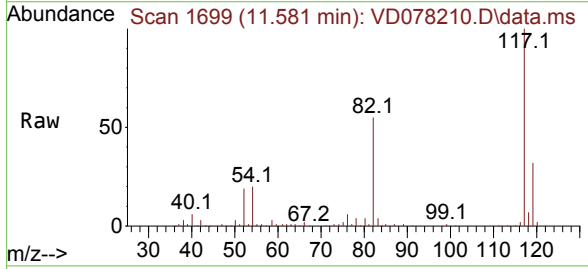
Instrument : MSVOA\_D  
 ClientSampleId : SOUTH-JERSEY-PORT-SAMPLE-SET-2-B

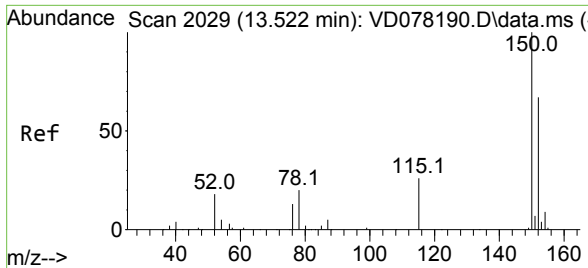
Tgt Ion	Resp	Lower	Upper
95	101988		
174	81.3	0.0	201.8
176	76.1	0.0	191.8



#63  
 Chlorobenzene-d5  
 Concen: 50.000 ug/l  
 RT: 11.581 min Scan# 1699  
 Delta R.T. -0.000 min  
 Lab File: VD078210.D  
 Acq: 23 Jan 2024 16:08

Tgt Ion	Resp	Lower	Upper
117	275322		
82	54.5	38.3	57.5
119	31.9	25.0	37.4



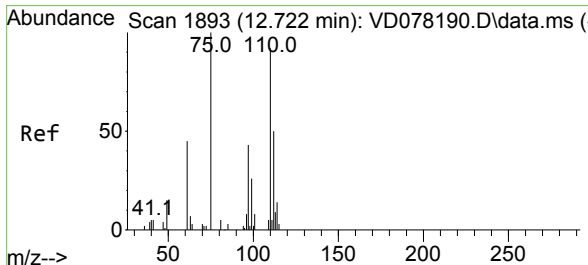
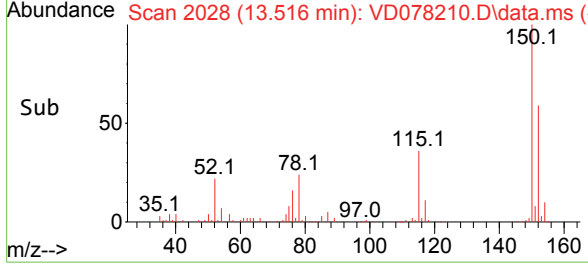
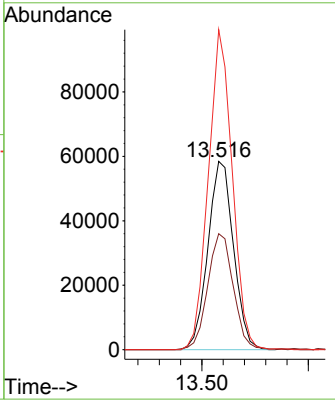
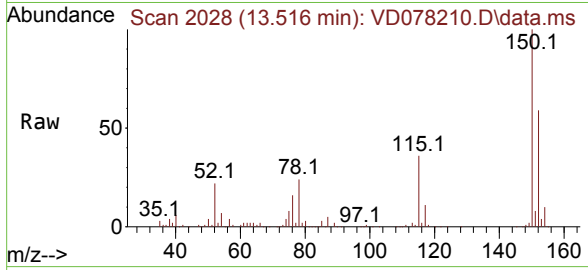


#72  
 1,4-Dichlorobenzene-d4  
 Concen: 50.000 ug/l  
 RT: 13.516 min Scan# 20  
 Delta R.T. -0.006 min  
 Lab File: VD078210.D  
 Acq: 23 Jan 2024 16:08

Instrument : MSVOA\_D  
 ClientSampleId : SOUTH-JERSEY-PORT-SAMPLE-SET-2-B

Tgt Ion:152 Resp: 97608

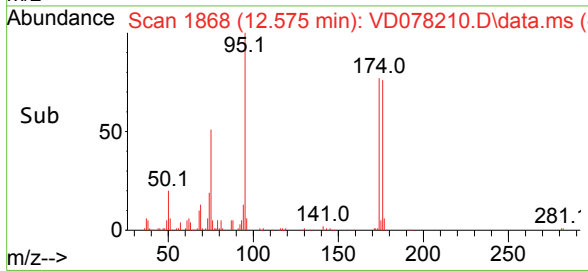
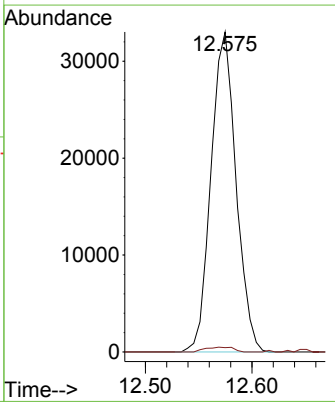
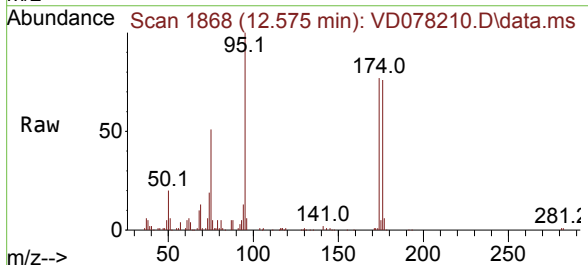
Ion	Ratio	Lower	Upper
152	100		
115	61.5	27.1	81.3
150	158.6	0.0	353.6

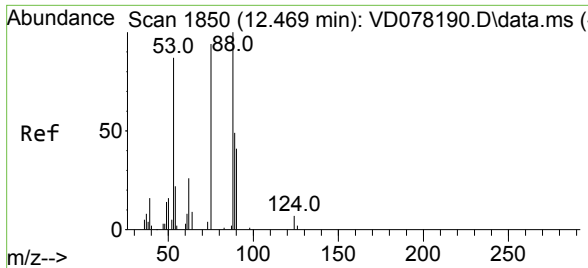


#76  
 1,2,3-Trichloropropane  
 Concen: 57.599 ug/l  
 RT: 12.575 min Scan# 1868  
 Delta R.T. -0.147 min  
 Lab File: VD078210.D  
 Acq: 23 Jan 2024 16:08

Tgt Ion: 75 Resp: 53923

Ion	Ratio	Lower	Upper
75	100		
77	1.7	0.0	0.0#





#81  
 trans-1,4-Dichloro-2-butene  
 Concen: 124.070 ug/l  
 RT: 12.575 min Scan# 1868  
 Delta R.T. 0.106 min  
 Lab File: VD078210.D  
 Acq: 23 Jan 2024 16:08

Instrument : MSVOA\_D  
 ClientSampleId : SOUTH-JERSEY-PORT-SAMPLE-SET-2-B

Tgt Ion: 75 Resp: 53923

Ion	Ratio	Lower	Upper
75	100		
53	0.0	63.0	94.4#
89	0.0	37.9	56.9#

