

Data Path : Z:\voasrv\HPCHEM1\MSVOA_D\Data\VD012523\
 Data File : VD075201.D
 Acq On : 25 Jan 2023 13:40
 Operator : KP/SY
 Sample : 01285-02
 Misc : 8.97G/5.00ml/MSVOA_D/SOIL
 ALS Vial : 11 Sample Multiplier: 1

Instrument :
 MSVOA_D
 ClientSampleId :
 B-07-SB02

Quant Time: Jan 25 15:56:51 2023
 Quant Method : Z:\voasrv\HPCHEM1\MSVOA_D\Method\82D011823S.M
 Quant Title : SW846 8260
 QLast Update : Thu Jan 19 01:32:27 2023
 Response via : Initial Calibration

Compound	R.T.	QIon	Response	Conc	Units	Dev(Min)

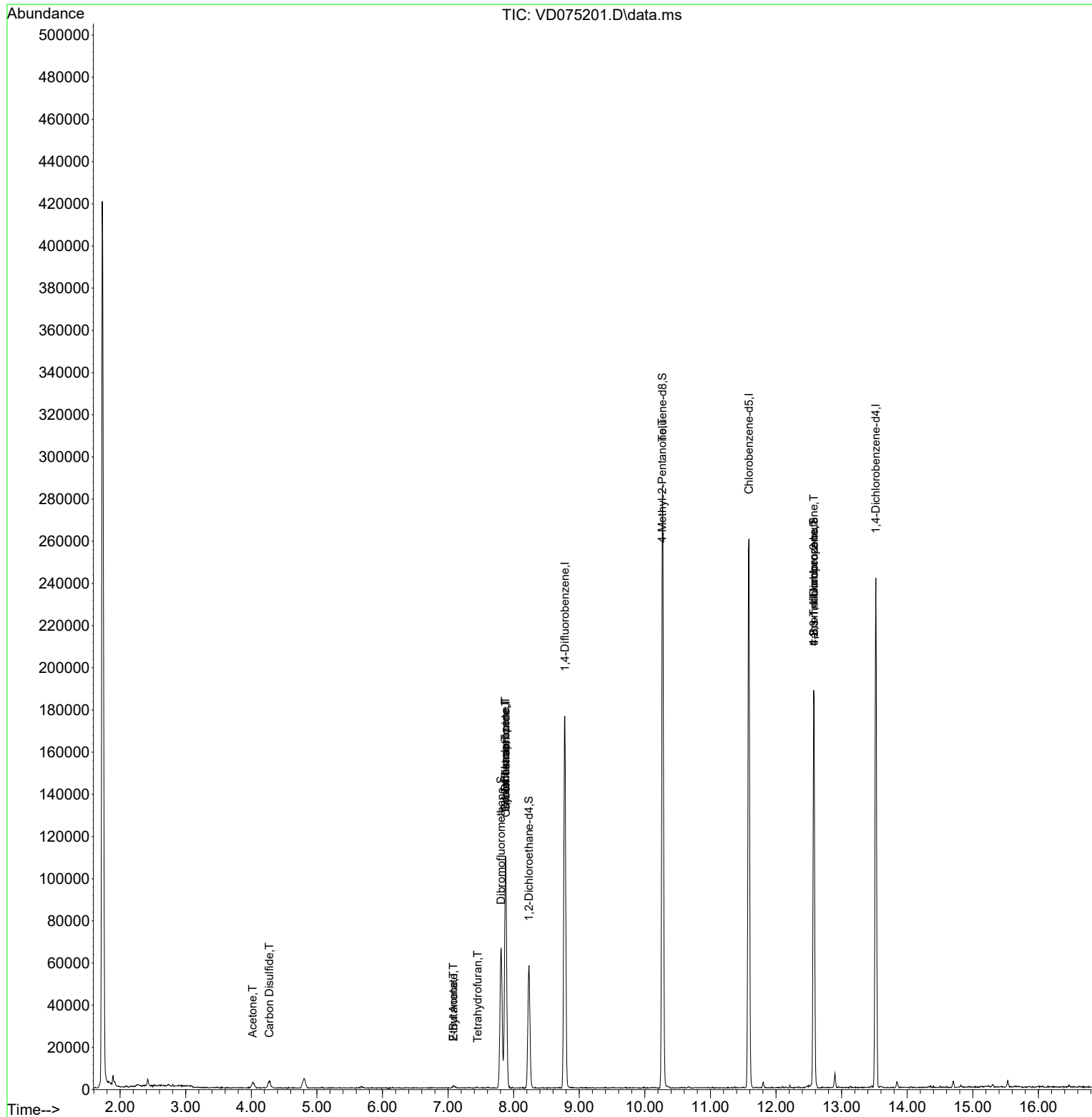
Internal Standards						
1) Pentafluorobenzene	7.875	168	81013	50.000	ug/l	0.00
34) 1,4-Difluorobenzene	8.781	114	156546	50.000	ug/l	0.00
63) Chlorobenzene-d5	11.586	117	147507	50.000	ug/l	0.00
72) 1,4-Dichlorobenzene-d4	13.522	152	60118	50.000	ug/l	0.00
System Monitoring Compounds						
33) 1,2-Dichloroethane-d4	8.234	65	44854	54.258	ug/l	0.00
Spiked Amount	50.000	Range	50 - 163	Recovery	=	108.520%
35) Dibromofluoromethane	7.810	113	48363	51.126	ug/l	0.00
Spiked Amount	50.000	Range	54 - 147	Recovery	=	102.260%
50) Toluene-d8	10.269	98	195260	52.424	ug/l	0.00
Spiked Amount	50.000	Range	49 - 140	Recovery	=	104.840%
62) 4-Bromofluorobenzene	12.575	95	61269	51.832	ug/l	0.00
Spiked Amount	50.000	Range	25 - 144	Recovery	=	103.660%
Target Compounds						
						Qvalue
16) Acetone	4.022	43	4864	22.309	ug/l	98
17) Carbon Disulfide	4.275	76	7163	2.381	ug/l #	75
20) Methylene Chloride	4.798	84	3483	Below Cal	#	83
25) 2-Butanone	7.081	43	1754	6.656	ug/l	95
29) Tetrahydrofuran	7.451	42	177	1.178	ug/l #	34
31) Cyclohexane	7.875	56	2078	1.253	ug/l #	18
36) 1,1-Dichloropropene	7.875	75	7250	4.770	ug/l #	46
37) Ethyl Acetate	7.081	43	1754	2.865	ug/l #	67
38) Carbon Tetrachloride	7.881	117	8534	6.669	ug/l #	14
51) 4-Methyl-2-Pentanone	10.263	43	1043	1.823	ug/l #	1
76) 1,2,3-Trichloropropane	12.575	75	32474	63.780	ug/l #	100
81) trans-1,4-Dichloro-2-b...	12.575	75	32474	147.943	ug/l #	14

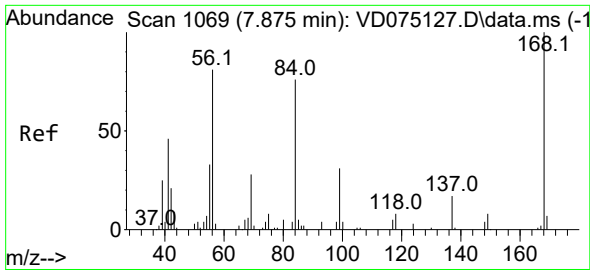
(#) = qualifier out of range (m) = manual integration (+) = signals summed

Data Path : Z:\voasrv\HPCHEM1\MSVOA_D\Data\VD012523\
 Data File : VD075201.D
 Acq On : 25 Jan 2023 13:40
 Operator : KP/SY
 Sample : 01285-02
 Misc : 8.97G/5.00ml/MSVOA_D/SOIL
 ALS Vial : 11 Sample Multiplier: 1

Instrument :
 MSVOA_D
 ClientSampleId :
 B-07-SB02

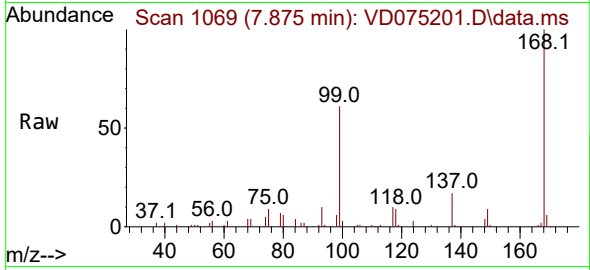
Quant Time: Jan 25 15:56:51 2023
 Quant Method : Z:\voasrv\HPCHEM1\MSVOA_D\Method\82D011823S.M
 Quant Title : SW846 8260
 QLast Update : Thu Jan 19 01:32:27 2023
 Response via : Initial Calibration



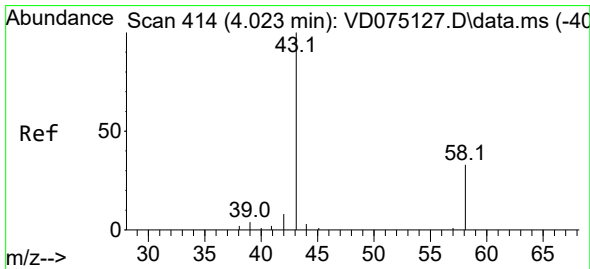
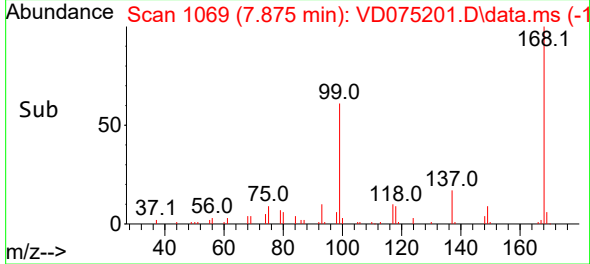
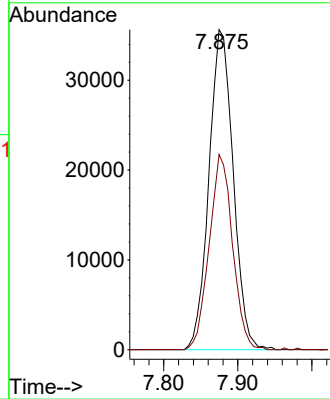


#1
 Pentafluorobenzene
 Concen: 50.000 ug/l
 RT: 7.875 min Scan# 1069
 Delta R.T. -0.000 min
 Lab File: VD075201.D
 Acq: 25 Jan 2023 13:40

Instrument :
 MSVOA_D
 ClientSampleId :
 B-07-SB02

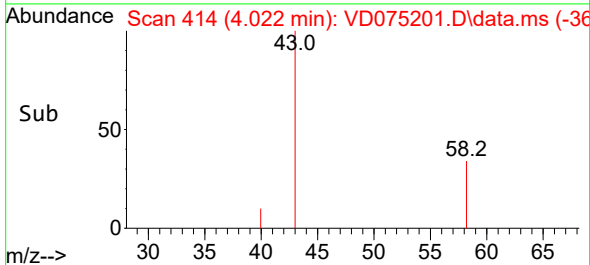
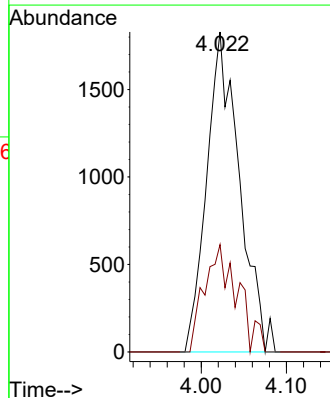
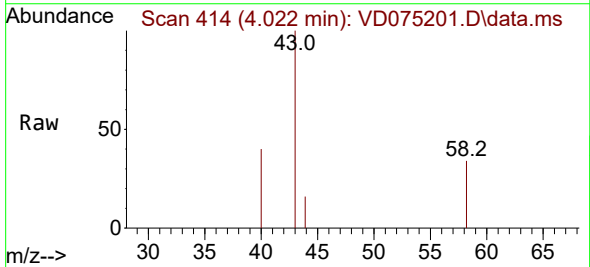


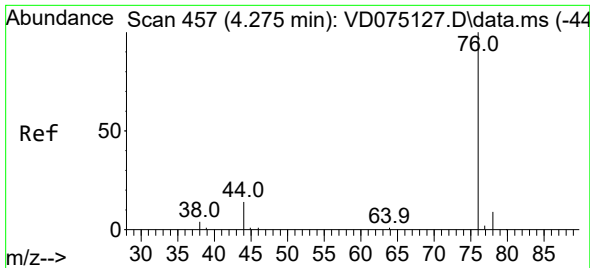
Tgt Ion:168 Resp: 81013
 Ion Ratio Lower Upper
 168 100
 99 61.0 45.2 67.8



#16
 Acetone
 Concen: 22.309 ug/l
 RT: 4.022 min Scan# 414
 Delta R.T. -0.000 min
 Lab File: VD075201.D
 Acq: 25 Jan 2023 13:40

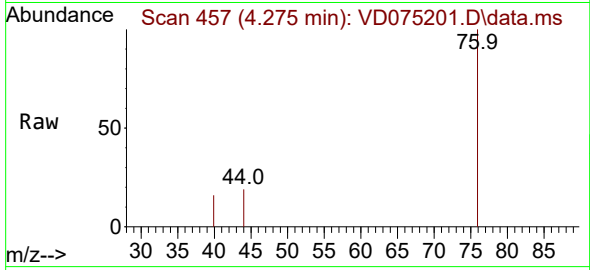
Tgt Ion: 43 Resp: 4864
 Ion Ratio Lower Upper
 43 100
 58 33.6 26.0 39.0



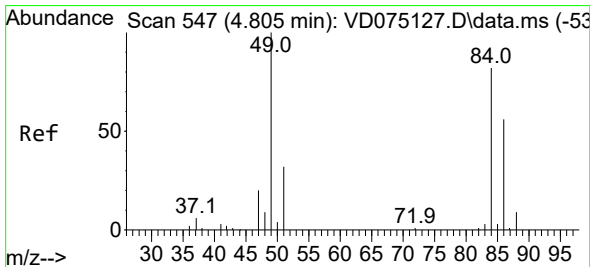
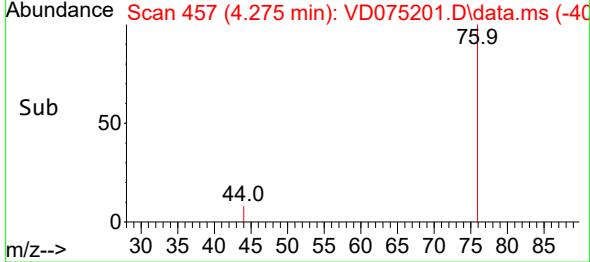
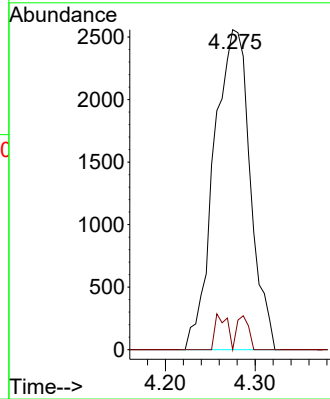


#17
 Carbon Disulfide
 Concen: 2.381 ug/l
 RT: 4.275 min Scan# 411
 Delta R.T. -0.000 min
 Lab File: VD075201.D
 Acq: 25 Jan 2023 13:40

Instrument : MSVOA_D
 ClientSampleId : B-07-SB02

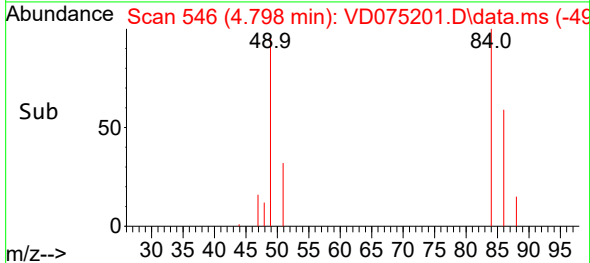
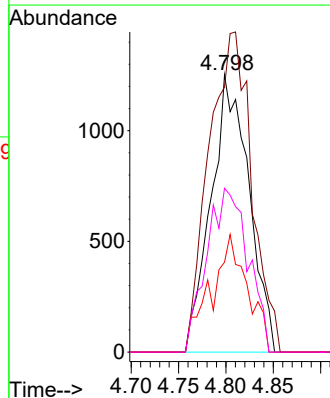
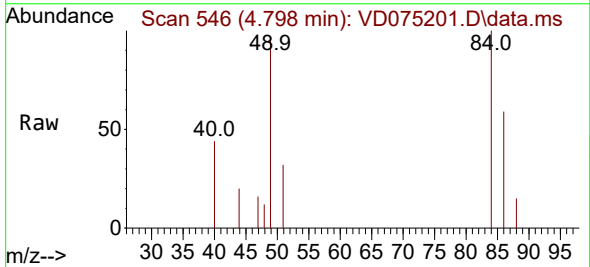


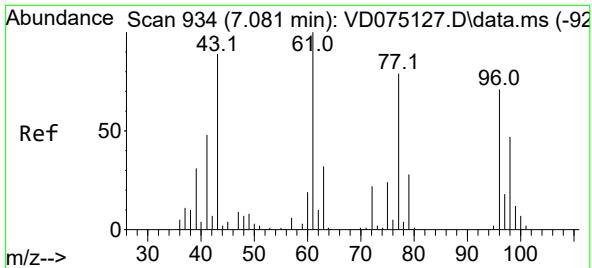
Tgt Ion: 76 Resp: 7163
 Ion Ratio Lower Upper
 76 100
 78 0.0 7.4 11.0#



#20
 Methylene Chloride
 Concen: Below Cal
 RT: 4.798 min Scan# 546
 Delta R.T. -0.007 min
 Lab File: VD075201.D
 Acq: 25 Jan 2023 13:40

Tgt Ion: 84 Resp: 3483
 Ion Ratio Lower Upper
 84 100
 49 95.6 97.0 145.6#
 51 32.4 30.9 46.3
 86 59.1 54.0 81.0

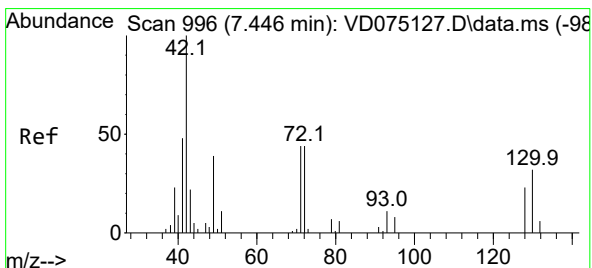
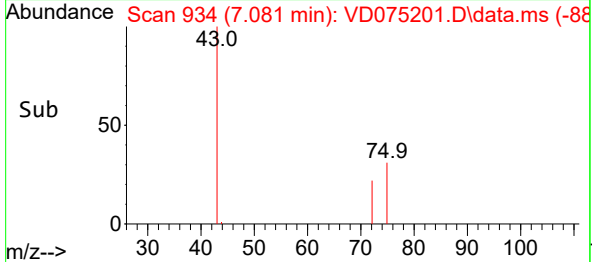
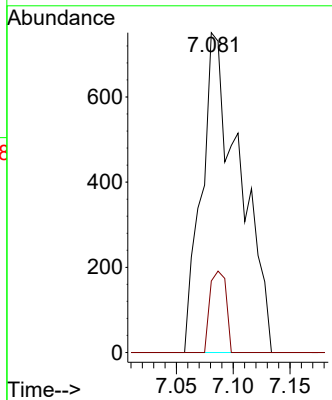
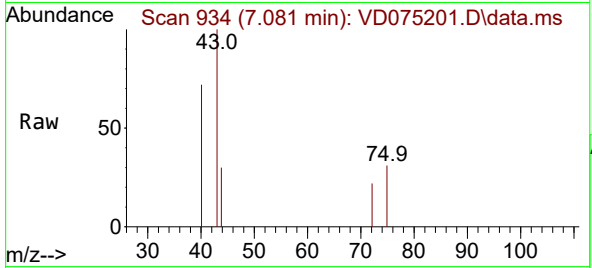




#25
 2-Butanone
 Concen: 6.656 ug/l
 RT: 7.081 min Scan# 911
 Delta R.T. -0.000 min
 Lab File: VD075201.D
 Acq: 25 Jan 2023 13:40

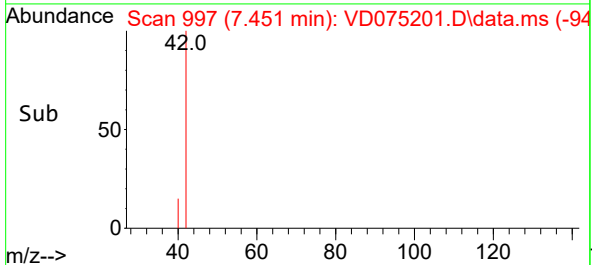
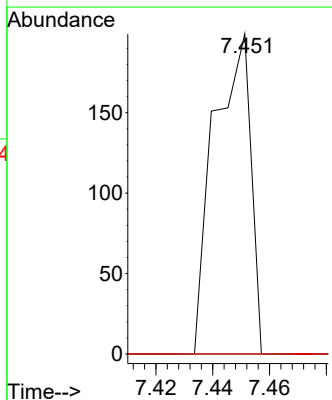
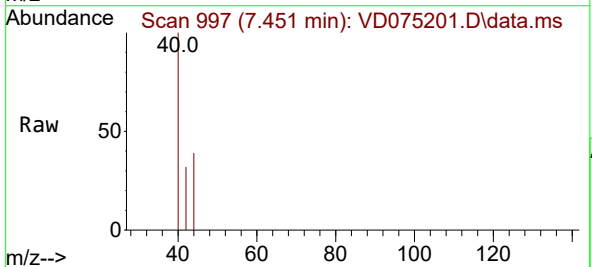
Instrument : MSVOA_D
 ClientSampleId : B-07-SB02

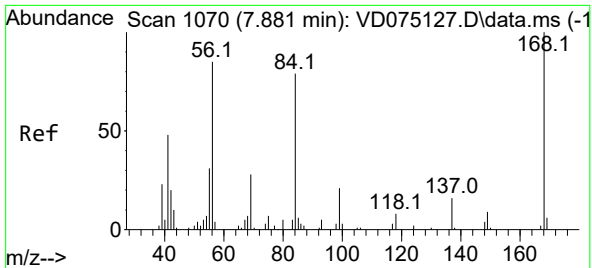
Tgt Ion: 43 Resp: 1754
 Ion Ratio Lower Upper
 43 100
 72 22.4 19.8 29.8



#29
 Tetrahydrofuran
 Concen: 1.178 ug/l
 RT: 7.451 min Scan# 997
 Delta R.T. 0.005 min
 Lab File: VD075201.D
 Acq: 25 Jan 2023 13:40

Tgt Ion: 42 Resp: 177
 Ion Ratio Lower Upper
 42 100
 72 0.0 33.8 50.8#
 71 0.0 31.6 47.4#



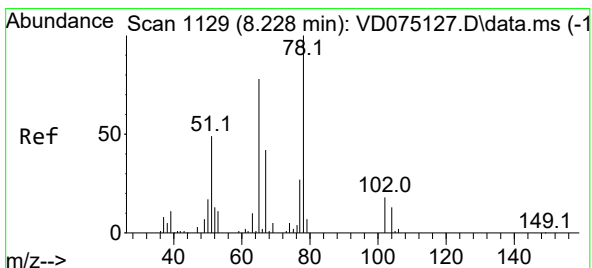
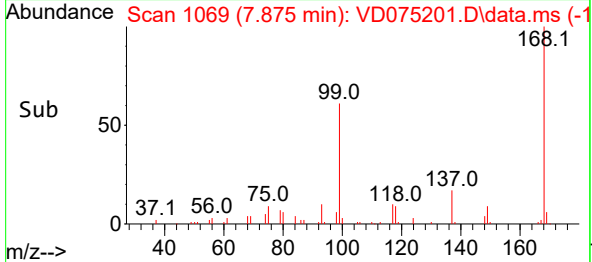
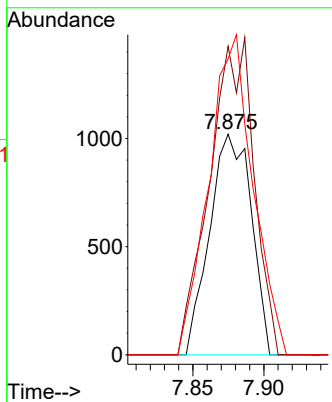
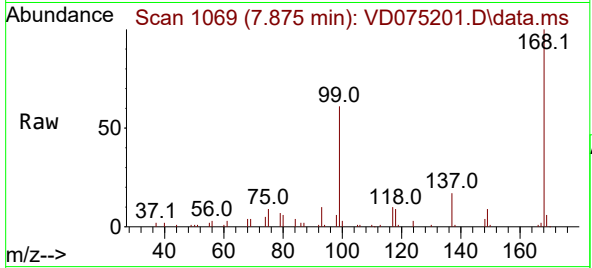


#31
 Cyclohexane
 Concen: 1.253 ug/l
 RT: 7.875 min Scan# 1069
 Delta R.T. -0.006 min
 Lab File: VD075201.D
 Acq: 25 Jan 2023 13:40

Instrument : MSVOA_D
 ClientSampleId : B-07-SB02

Tgt Ion: 56 Resp: 2078

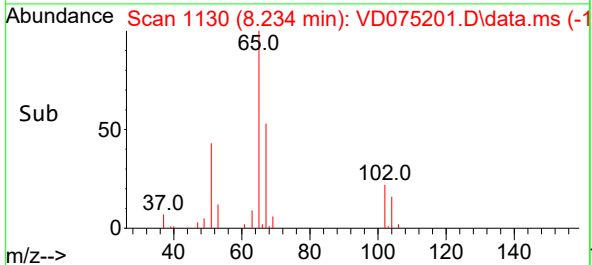
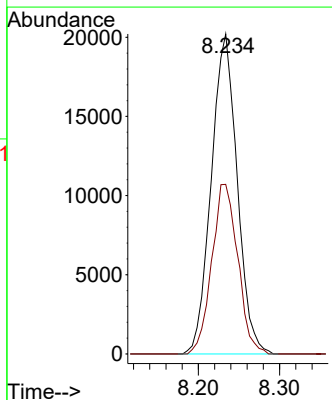
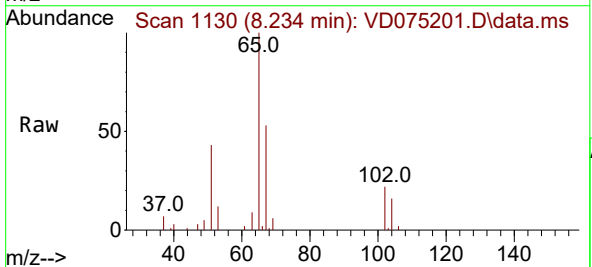
Ion	Ratio	Lower	Upper
56	100		
69	139.8	26.6	40.0#
84	134.1	74.1	111.1#

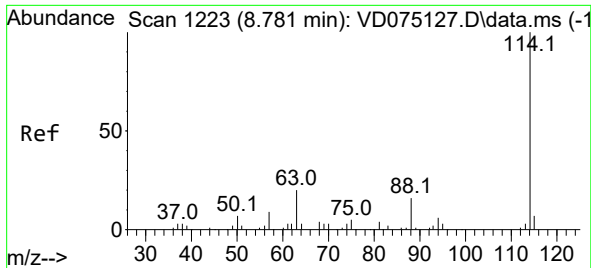


#33
 1,2-Dichloroethane-d4
 Concen: 54.258 ug/l
 RT: 8.234 min Scan# 1130
 Delta R.T. 0.005 min
 Lab File: VD075201.D
 Acq: 25 Jan 2023 13:40

Tgt Ion: 65 Resp: 44854

Ion	Ratio	Lower	Upper
65	100		
67	53.1	0.0	105.2

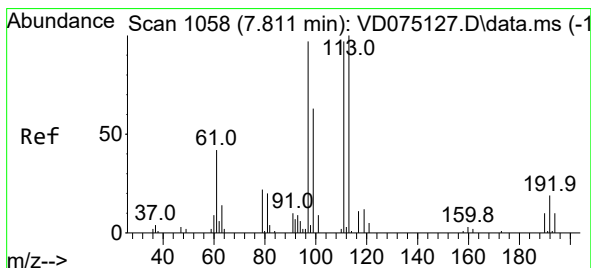
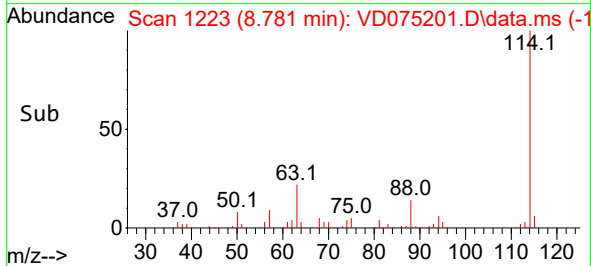
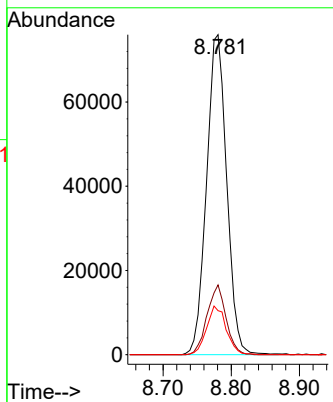
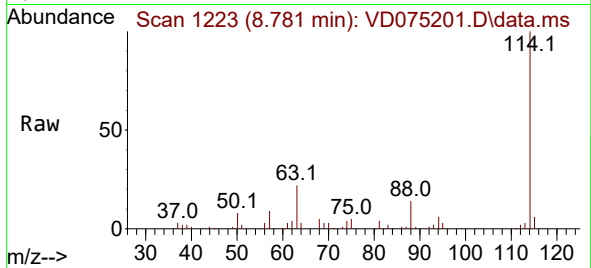




#34
 1,4-Difluorobenzene
 Concen: 50.000 ug/l
 RT: 8.781 min Scan# 11
 Delta R.T. -0.000 min
 Lab File: VD075201.D
 Acq: 25 Jan 2023 13:40

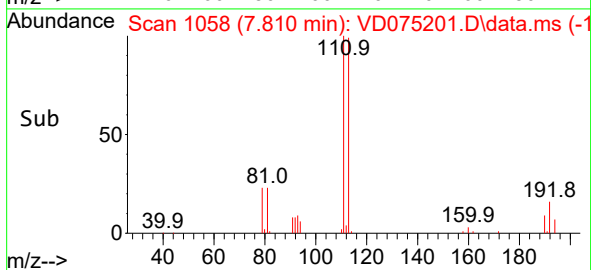
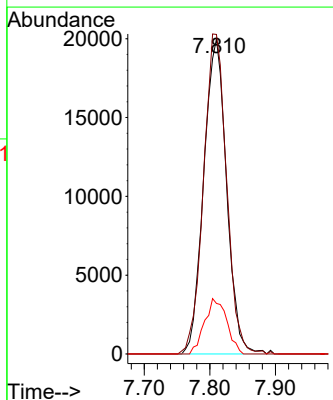
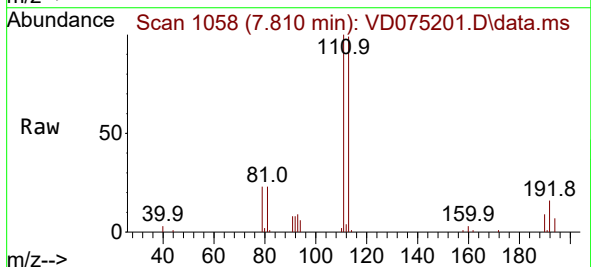
Instrument :
 MSVOA_D
 ClientSampleId :
 B-07-SB02

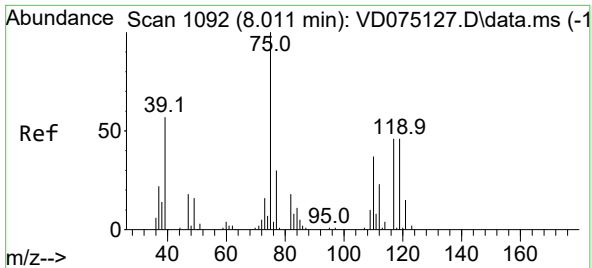
Tgt Ion	Resp	Lower	Upper
114	156546		
63	21.8	0.0	40.2
88	13.8	0.0	32.2



#35
 Dibromofluoromethane
 Concen: 51.126 ug/l
 RT: 7.810 min Scan# 1058
 Delta R.T. -0.000 min
 Lab File: VD075201.D
 Acq: 25 Jan 2023 13:40

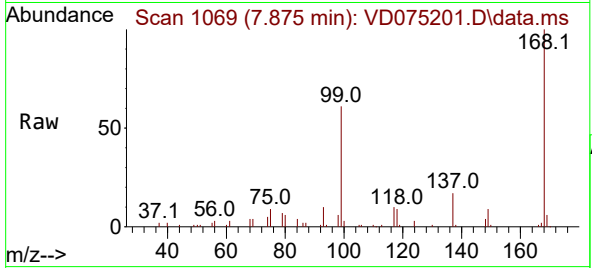
Tgt Ion	Resp	Lower	Upper
113	48363		
111	102.4	80.1	120.1
192	17.0	15.4	23.0





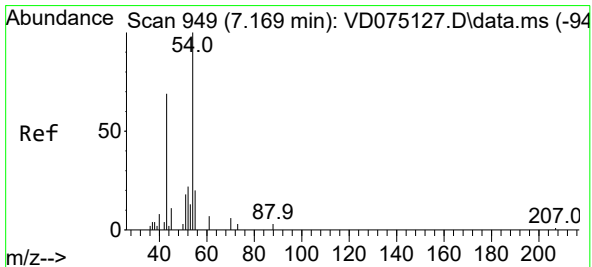
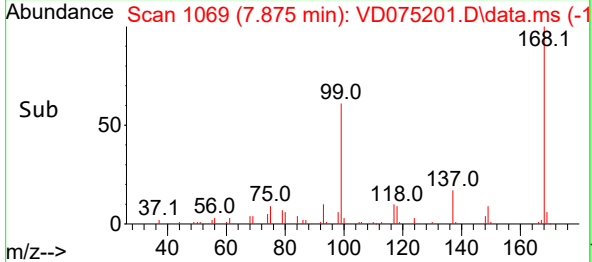
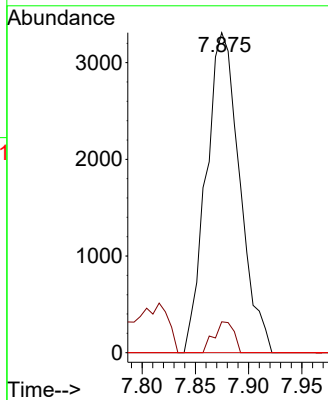
#36
 1,1-Dichloropropene
 Concen: 4.770 ug/l
 RT: 7.875 min Scan# 1092
 Delta R.T. -0.136 min
 Lab File: VD075201.D
 Acq: 25 Jan 2023 13:40

Instrument : MSVOA_D
 ClientSampleId : B-07-SB02



Tgt Ion: 75 Resp: 7250

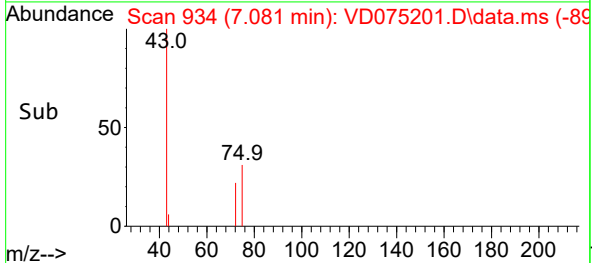
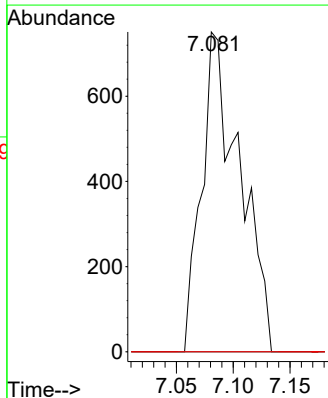
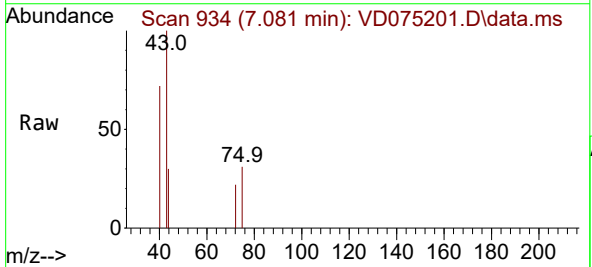
Ion	Ratio	Lower	Upper
75	100		
110	5.7	18.1	54.4#
77	0.0	25.1	37.7#

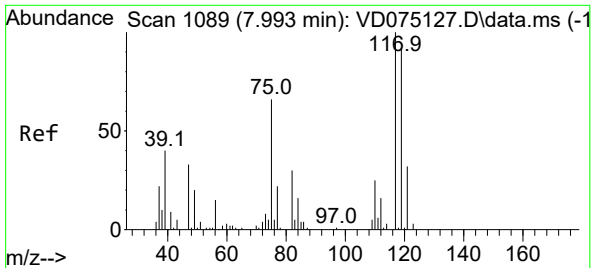


#37
 Ethyl Acetate
 Concen: 2.865 ug/l
 RT: 7.081 min Scan# 934
 Delta R.T. -0.089 min
 Lab File: VD075201.D
 Acq: 25 Jan 2023 13:40

Tgt Ion: 43 Resp: 1754

Ion	Ratio	Lower	Upper
43	100		
61	0.0	11.7	17.5#
70	0.0	8.8	13.2#



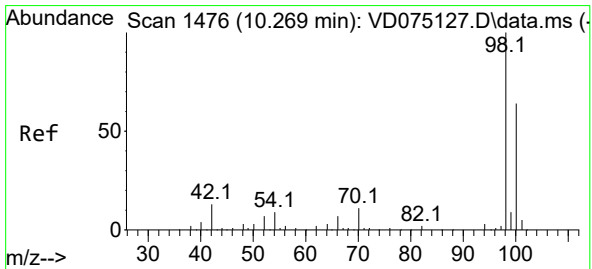
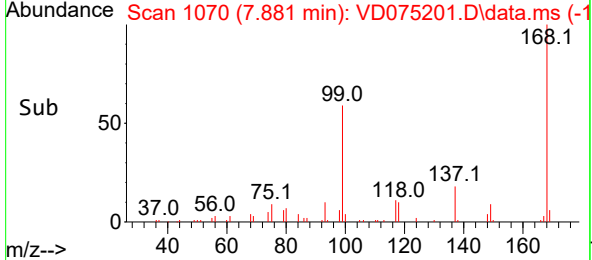
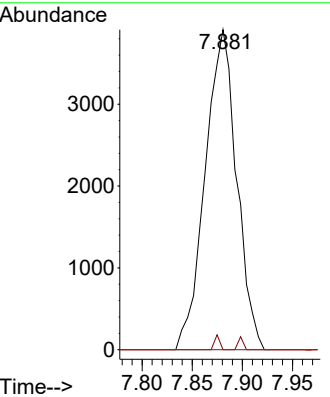
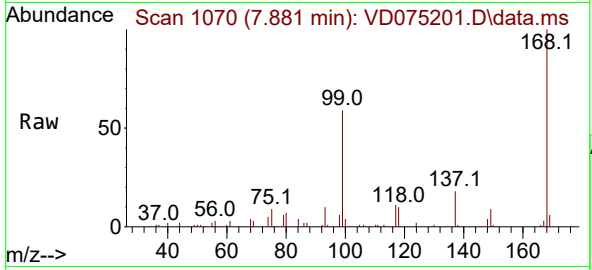


#38
 Carbon Tetrachloride
 Concen: 6.669 ug/l
 RT: 7.881 min Scan# 1089
 Delta R.T. -0.112 min
 Lab File: VD075201.D
 Acq: 25 Jan 2023 13:40

Instrument : MSVOA_D
 ClientSampleId : B-07-SB02

Tgt Ion:117 Resp: 8534

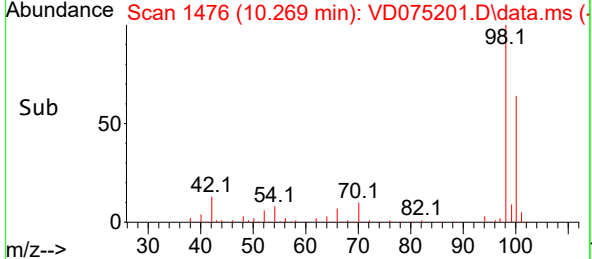
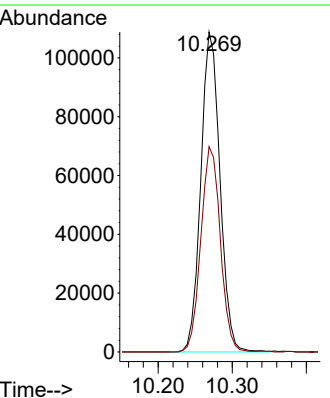
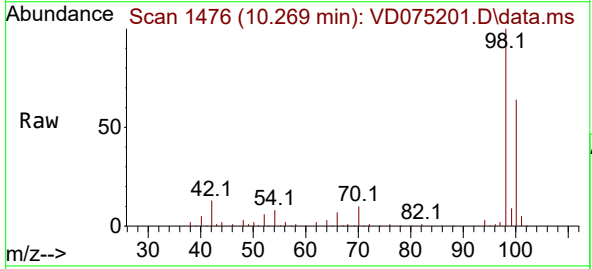
Ion	Ratio	Lower	Upper
117	100		
119	0.0	73.6	110.4#
121	0.0	25.4	38.0#

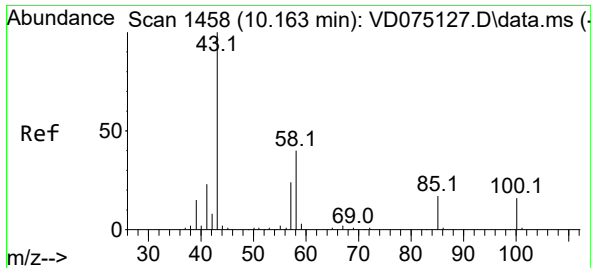


#50
 Toluene-d8
 Concen: 52.424 ug/l
 RT: 10.269 min Scan# 1476
 Delta R.T. -0.001 min
 Lab File: VD075201.D
 Acq: 25 Jan 2023 13:40

Tgt Ion: 98 Resp: 195260

Ion	Ratio	Lower	Upper
98	100		
100	65.1	52.7	79.1

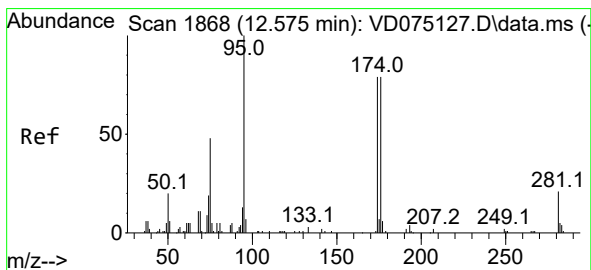
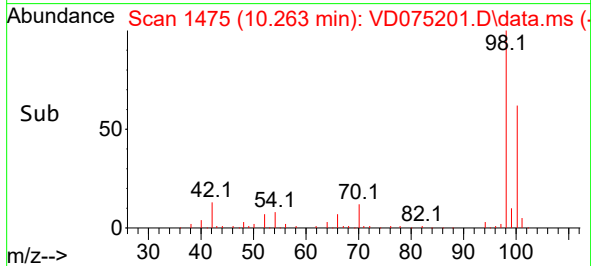
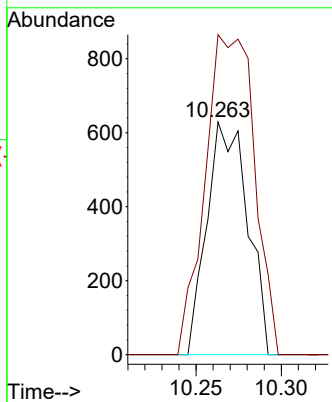
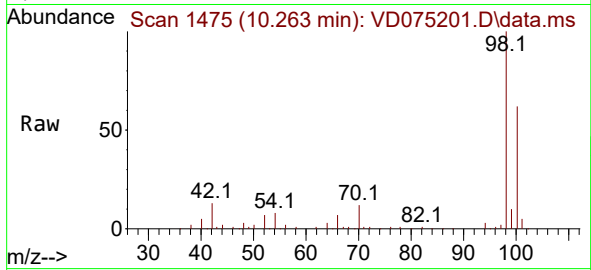




#51
 4-Methyl-2-Pentanone
 Concen: 1.823 ug/l
 RT: 10.263 min Scan# 1458
 Delta R.T. 0.100 min
 Lab File: VD075201.D
 Acq: 25 Jan 2023 13:40

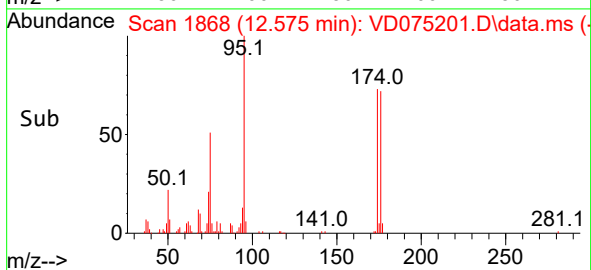
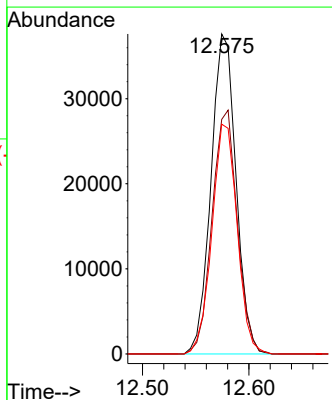
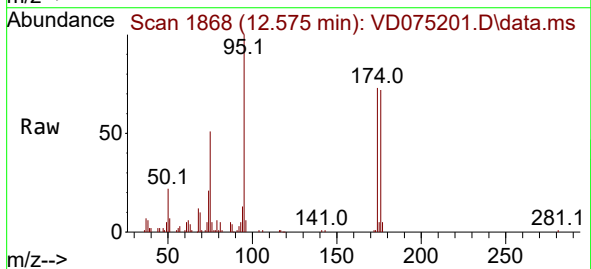
Instrument : MSVOA_D
 ClientSampleId : B-07-SB02

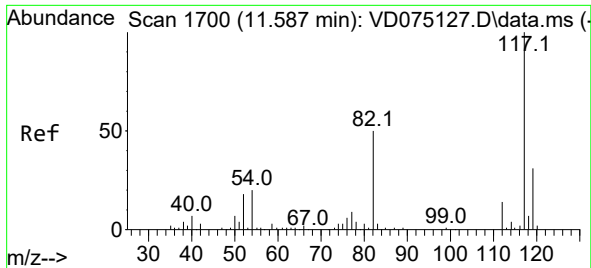
Tgt Ion: 43 Resp: 1043
 Ion Ratio Lower Upper
 43 100
 58 166.7 31.4 47.0#



#62
 4-Bromofluorobenzene
 Concen: 51.832 ug/l
 RT: 12.575 min Scan# 1868
 Delta R.T. -0.000 min
 Lab File: VD075201.D
 Acq: 25 Jan 2023 13:40

Tgt Ion: 95 Resp: 61269
 Ion Ratio Lower Upper
 95 100
 174 77.0 0.0 161.2
 176 72.4 0.0 160.2



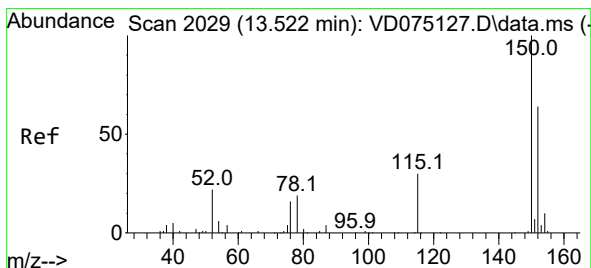
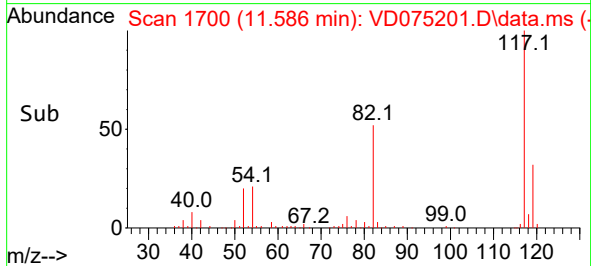
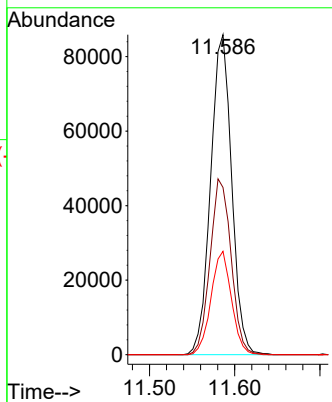
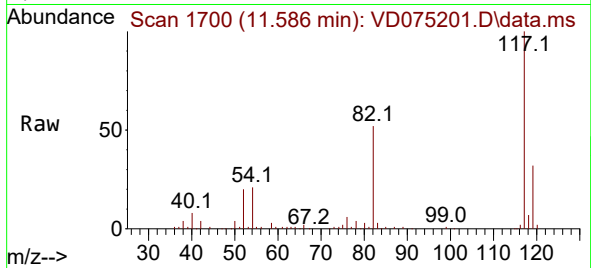


#63
 Chlorobenzene-d5
 Concen: 50.000 ug/l
 RT: 11.586 min Scan# 11
 Delta R.T. -0.000 min
 Lab File: VD075201.D
 Acq: 25 Jan 2023 13:40

Instrument :
 MSVOA_D
 ClientSampleId :
 B-07-SB02

Tgt Ion:117 Resp: 147507

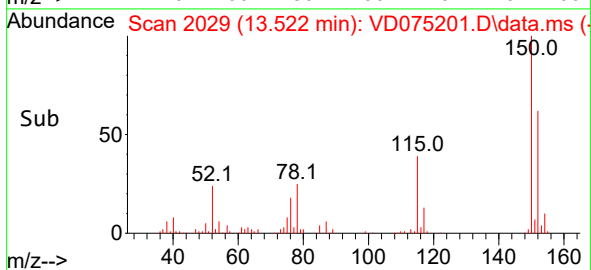
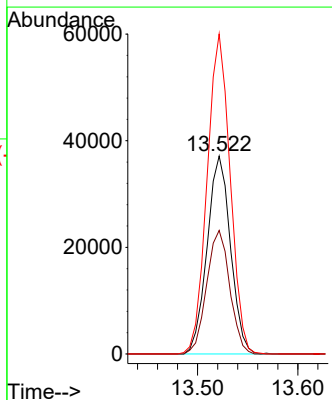
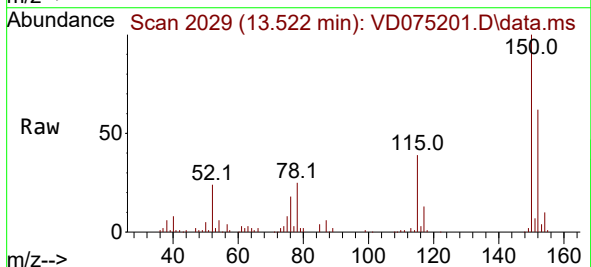
Ion	Ratio	Lower	Upper
117	100		
82	52.3	39.6	59.4
119	32.3	24.6	37.0

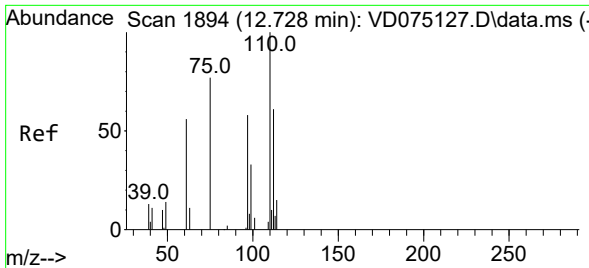


#72
 1,4-Dichlorobenzene-d4
 Concen: 50.000 ug/l
 RT: 13.522 min Scan# 2029
 Delta R.T. -0.001 min
 Lab File: VD075201.D
 Acq: 25 Jan 2023 13:40

Tgt Ion:152 Resp: 60118

Ion	Ratio	Lower	Upper
152	100		
115	61.5	28.8	86.4
150	158.8	0.0	348.6

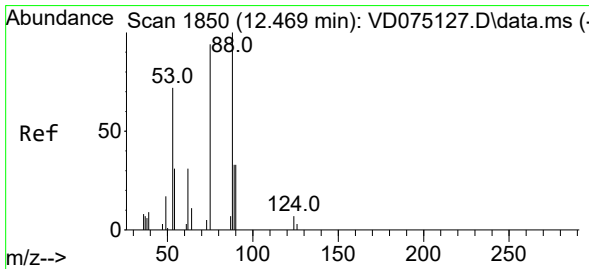
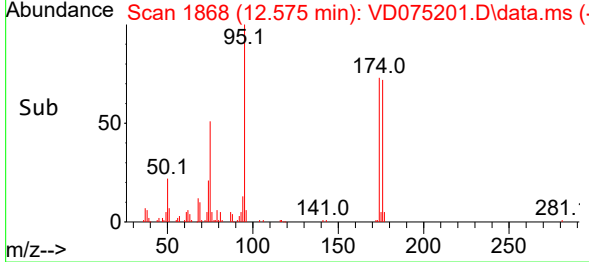
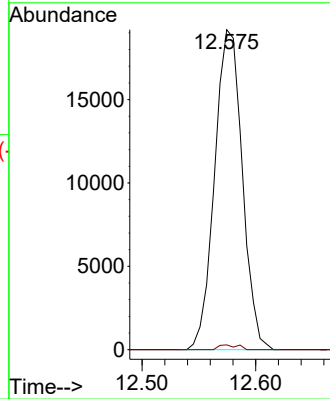
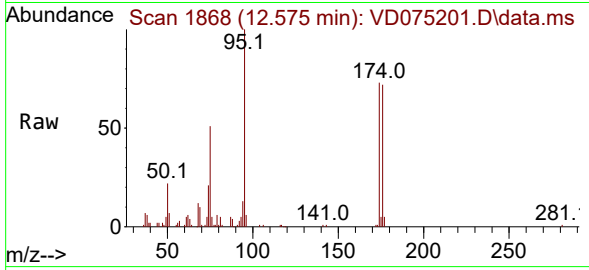




#76
 1,2,3-Trichloropropane
 Concen: 63.780 ug/l
 RT: 12.575 min Scan# 1868
 Delta R.T. -0.153 min
 Lab File: VD075201.D
 Acq: 25 Jan 2023 13:40

Instrument : MSVOA_D
 ClientSampleId : B-07-SB02

Tgt Ion: 75 Resp: 32474
 Ion Ratio Lower Upper
 75 100
 77 1.1 0.0 0.0#



#81
 trans-1,4-Dichloro-2-butene
 Concen: 147.943 ug/l
 RT: 12.575 min Scan# 1868
 Delta R.T. 0.105 min
 Lab File: VD075201.D
 Acq: 25 Jan 2023 13:40

Tgt Ion: 75 Resp: 32474
 Ion Ratio Lower Upper
 75 100
 53 0.0 70.5 105.7#
 89 0.3 34.6 52.0#

