

Data Path : Z:\voasrv\HPCHEM1\MSVOA_D\Data\VD012921\
 Data File : VD068247.D
 Acq On : 29 Jan 2021 18:37
 Operator : VA/SY
 Sample : M1286-20
 Misc : 4.84G/5.00ml/MSVOA_D/SOIL
 ALS Vial : 15 Sample Multiplier: 1

Instrument :
 MSVOA_D
 ClientSampled :

Quant Time: Jan 30 00:04:47 2021
 Quant Method : Z:\voasrv\HPCHEM1\MSVOA_D\Method\82D011921S.M
 Quant Title : SW846 8260
 QLast Update : Tue Jan 19 13:19:08 2021
 Response via : Initial Calibration

Compound	R.T.	QIon	Response	Conc	Units	Dev(Min)

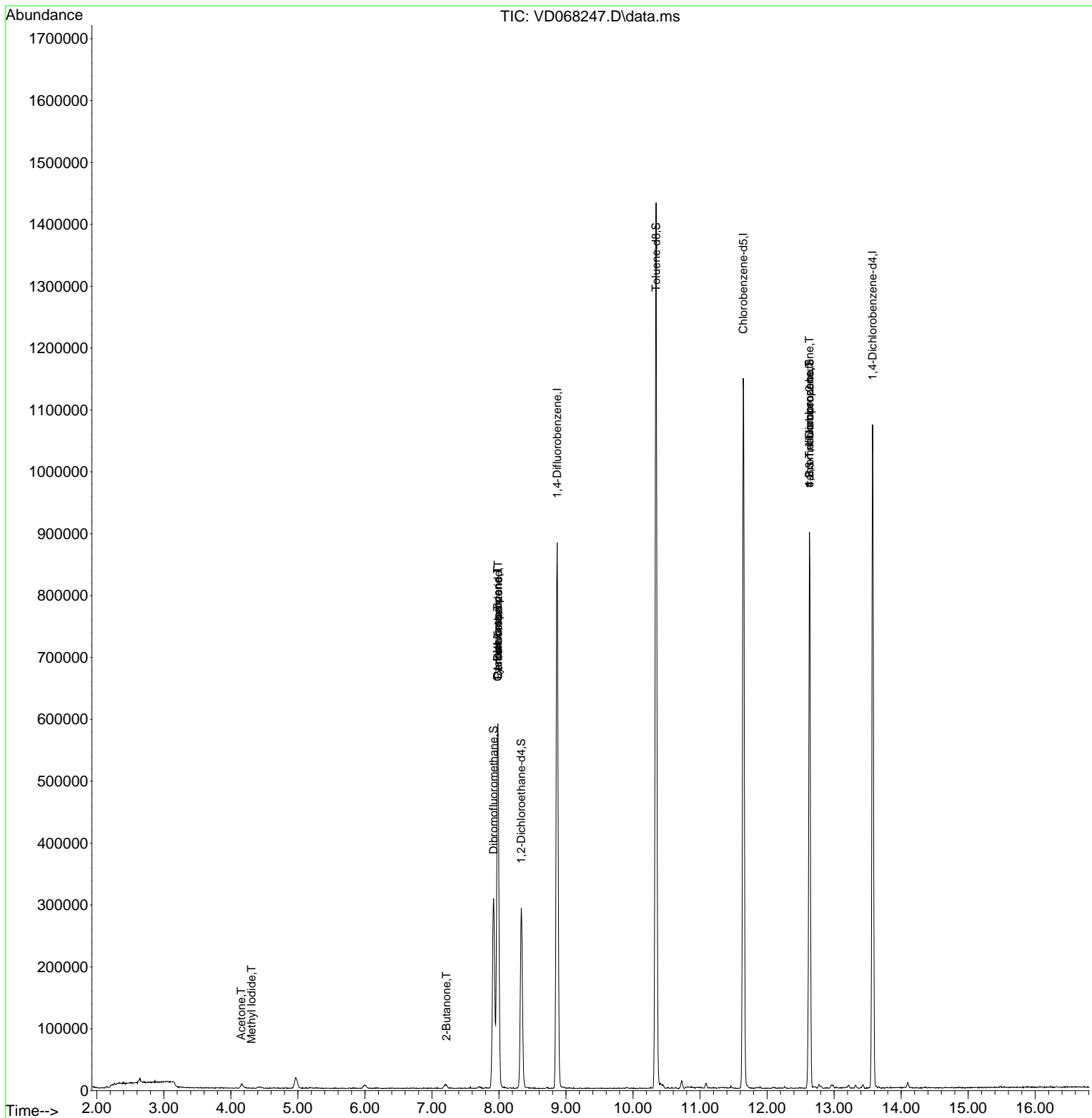
Internal Standards						
1) Pentafluorobenzene	7.985	168	448541	50.00	ug/l	0.00
34) 1,4-Difluorobenzene	8.867	114	788393	50.00	ug/l	0.00
63) Chlorobenzene-d5	11.644	117	692260	50.00	ug/l	0.00
72) 1,4-Dichlorobenzene-d4	13.573	152	289403	50.00	ug/l	0.00
System Monitoring Compounds						
33) 1,2-Dichloroethane-d4	8.332	65	230091	53.62	ug/l	0.00
Spiked Amount	50.000	Range	50 - 163	Recovery	=	107.24%
35) Dibromofluoromethane	7.920	113	230863	52.97	ug/l	0.00
Spiked Amount	50.000	Range	54 - 147	Recovery	=	105.94%
50) Toluene-d8	10.344	98	979326	56.17	ug/l	0.00
Spiked Amount	50.000	Range	49 - 140	Recovery	=	112.34%
62) 4-Bromofluorobenzene	12.632	95	301805	48.07	ug/l	0.00
Spiked Amount	50.000	Range	25 - 144	Recovery	=	96.14%
Target Compounds						
						Qvalue
10) Methyl Iodide	4.309	142	56	3.17	ug/l #	38
11) Tert butyl alcohol	5.173	59	386	Below	Cal #	74
16) Acetone	4.156	43	11697	15.27	ug/l	90
20) Methylene Chloride	4.973	84	13465	Below	Cal	98
25) 2-Butanone	7.214	43	3271	2.84	ug/l #	83
31) Cyclohexane	7.979	56	9544	1.03	ug/l #	1
36) 1,1-Dichloropropene	7.979	75	36409	4.58	ug/l #	47
38) Carbon Tetrachloride	7.985	117	47198	6.34	ug/l #	15
76) 1,2,3-Trichloropropane	12.632	75	155103	55.43	ug/l #	100
81) trans-1,4-Dichloro-2-b...	12.632	75	155103	112.16	ug/l #	13

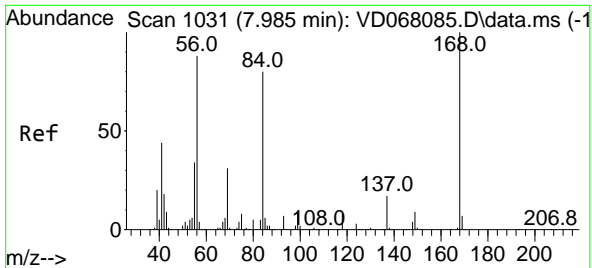
(#) = qualifier out of range (m) = manual integration (+) = signals summed

Data Path : Z:\voasrv\HPCHEM1\MSVOA_D\Data\VD012921\
 Data File : VD068247.D
 Acq On : 29 Jan 2021 18:37
 Operator : VA/SY
 Sample : M1286-20
 Misc : 4.84G/5.00ml/MSVOA_D/SOIL
 ALS Vial : 15 Sample Multiplier: 1

Instrument :
 MSVOA_D
 ClientSampled :

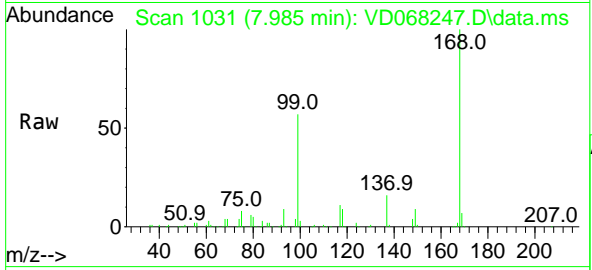
Quant Time: Jan 30 00:04:47 2021
 Quant Method : Z:\voasrv\HPCHEM1\MSVOA_D\Method\82D011921S.M
 Quant Title : SW846 8260
 QLast Update : Tue Jan 19 13:19:08 2021
 Response via : Initial Calibration



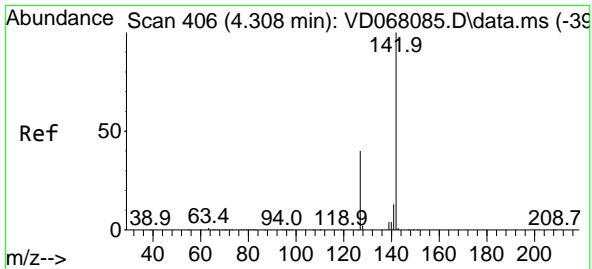
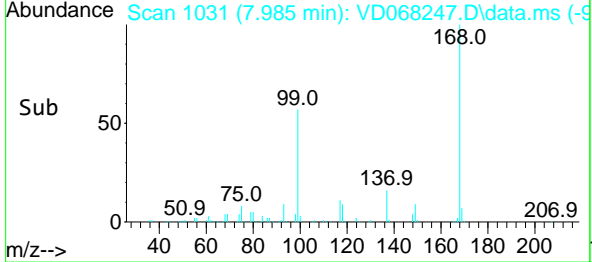
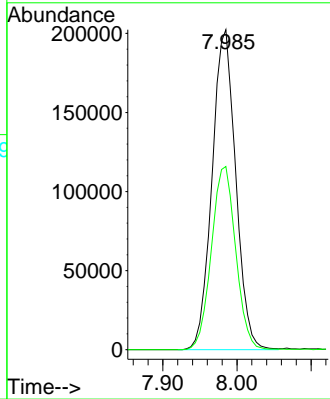


#1
 Pentafluorobenzene
 Concen: 50.00 ug/l
 RT: 7.985 min Scan# 1031
 Delta R.T. -0.000 min
 Lab File: VD068247.D
 Acq: 29 Jan 2021 18:37

Instrument :
 MSVOA_D
 ClientSampled :

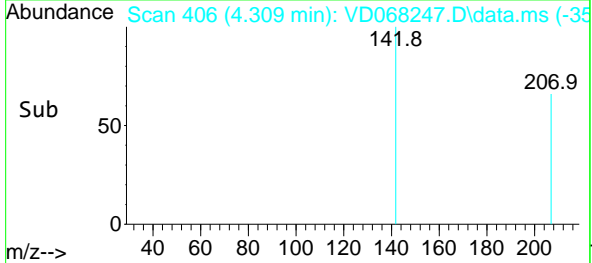
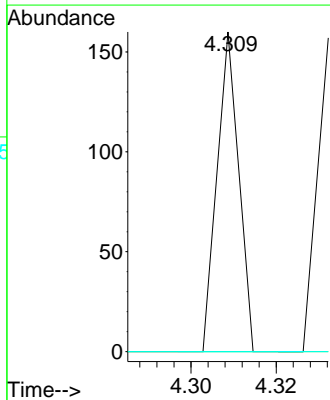
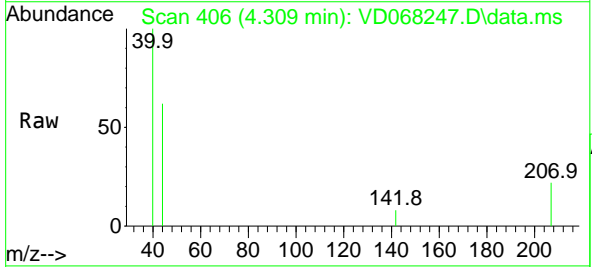


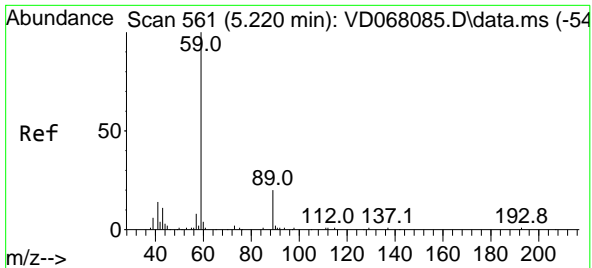
Tgt Ion:168 Resp: 448541
 Ion Ratio Lower Upper
 168 100
 99 57.2 43.5 65.3



#10
 Methyl Iodide
 Concen: 3.17 ug/l
 RT: 4.309 min Scan# 406
 Delta R.T. 0.001 min
 Lab File: VD068247.D
 Acq: 29 Jan 2021 18:37

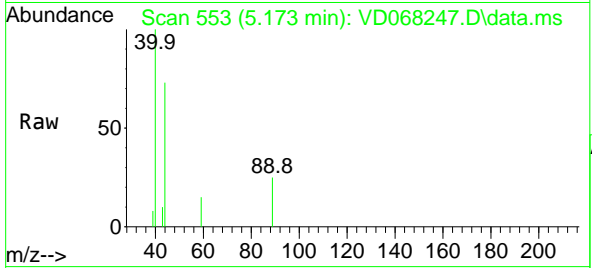
Tgt Ion:142 Resp: 56
 Ion Ratio Lower Upper
 142 100
 127 0.0 37.9 56.9#
 141 0.0 11.5 17.3#



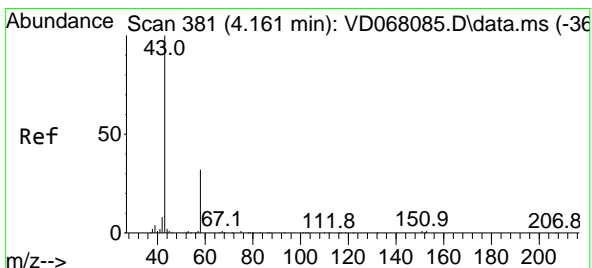
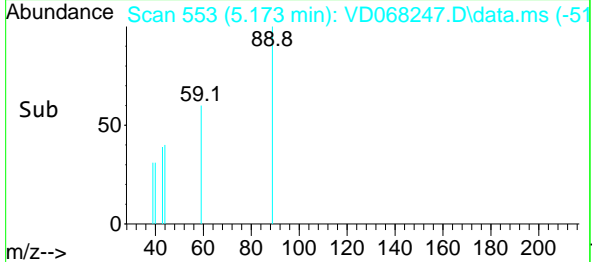
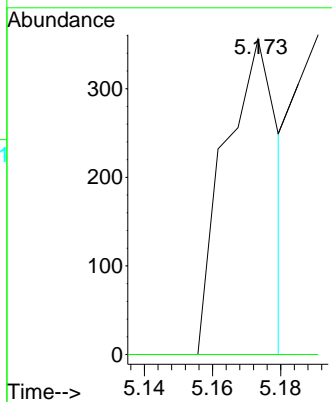


#11
 Tert butyl alcohol
 Concen: Below Cal
 RT: 5.173 min Scan# 553
 Delta R.T. -0.047 min
 Lab File: VD068247.D
 Acq: 29 Jan 2021 18:37

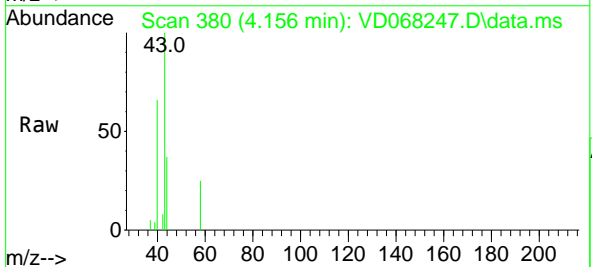
Instrument :
 MSVOA_D
 ClientSampled :



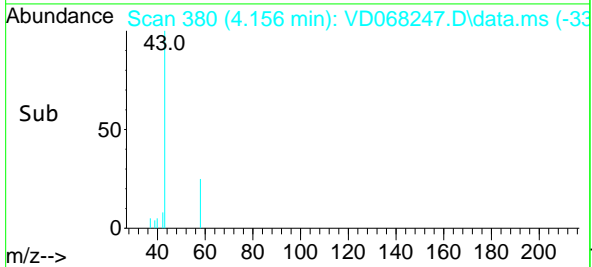
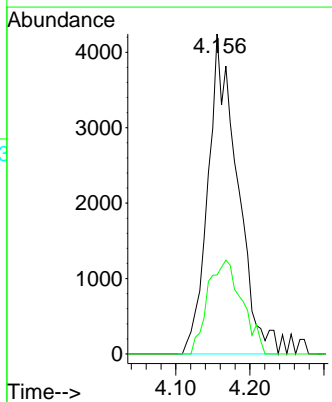
Tgt Ion: 59 Resp: 386
 Ion Ratio Lower Upper
 59 100
 57 0.0 7.4 11.2#

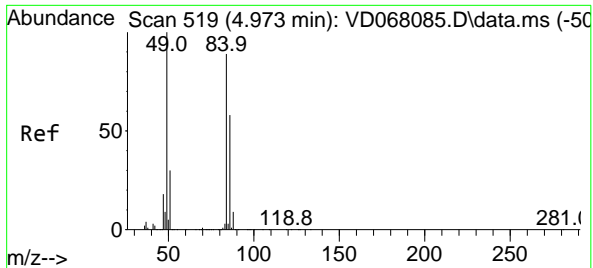


#16
 Acetone
 Concen: 15.27 ug/l
 RT: 4.156 min Scan# 380
 Delta R.T. -0.006 min
 Lab File: VD068247.D
 Acq: 29 Jan 2021 18:37



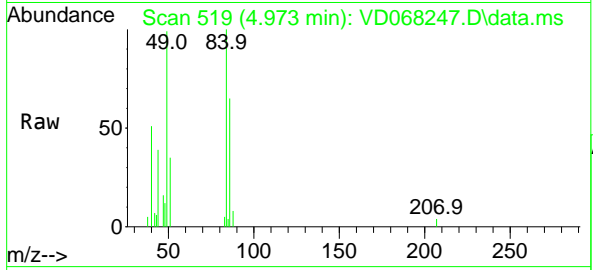
Tgt Ion: 43 Resp: 11697
 Ion Ratio Lower Upper
 43 100
 58 24.7 24.2 36.4





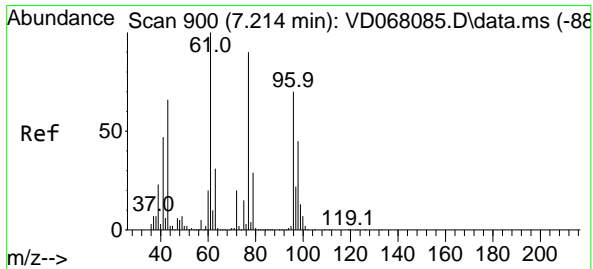
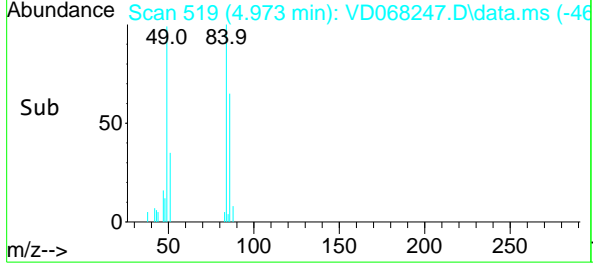
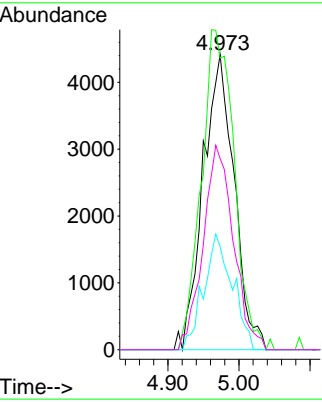
#20
 Methylene Chloride
 Concen: Below Cal
 RT: 4.973 min Scan# 519
 Delta R.T. 0.000 min
 Lab File: VD068247.D
 Acq: 29 Jan 2021 18:37

Instrument :
 MSVOA_D
 ClientSampled :

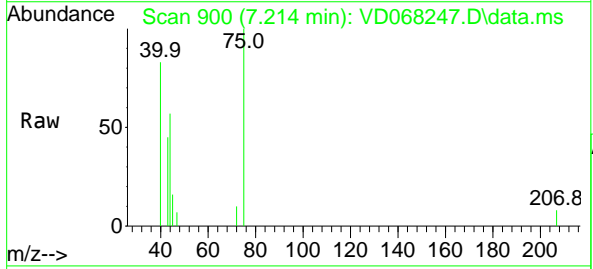


Tgt Ion: 84 Resp: 13465

Ion	Ratio	Lower	Upper
84	100		
49	98.8	77.4	116.2
51	34.9	26.1	39.1
86	64.8	51.8	77.8

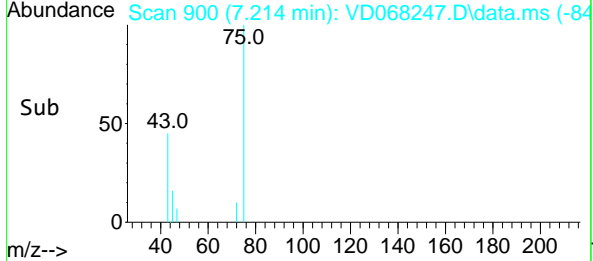
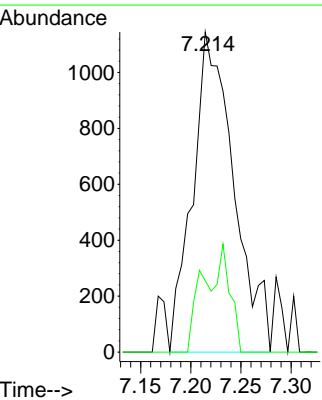


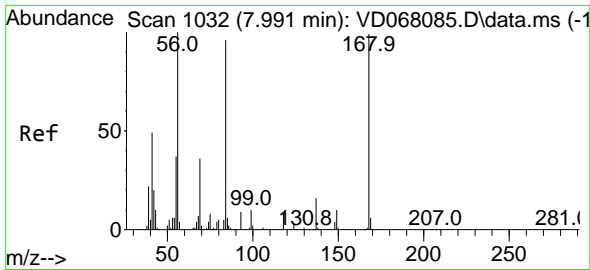
#25
 2-Butanone
 Concen: 2.84 ug/l
 RT: 7.214 min Scan# 900
 Delta R.T. 0.000 min
 Lab File: VD068247.D
 Acq: 29 Jan 2021 18:37



Tgt Ion: 43 Resp: 3271

Ion	Ratio	Lower	Upper
43	100		
72	22.3	25.1	37.7#

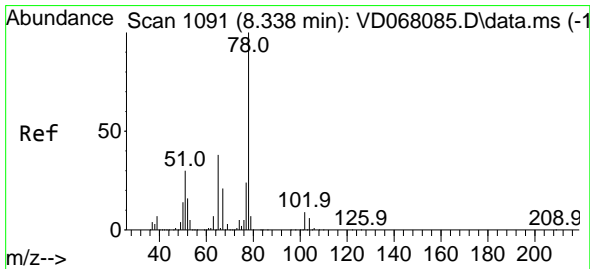
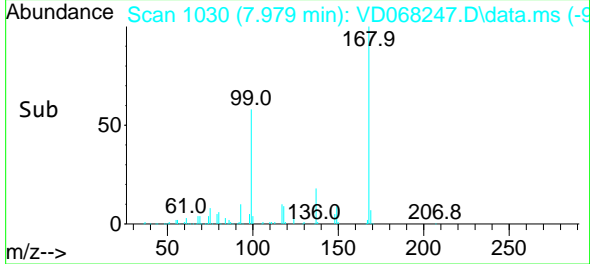
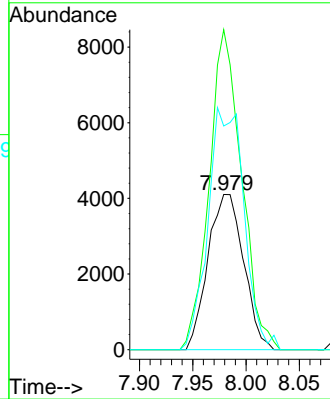
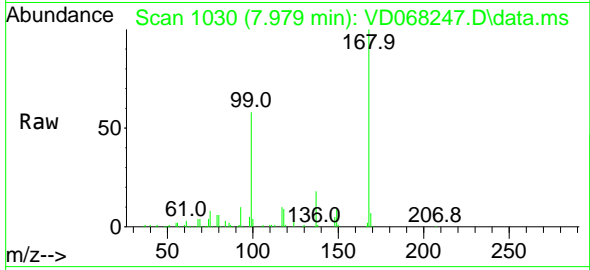




#31
 Cyclohexane
 Concen: 1.03 ug/l
 RT: 7.979 min Scan# 1030
 Delta R.T. -0.011 min
 Lab File: VD068247.D
 Acq: 29 Jan 2021 18:37

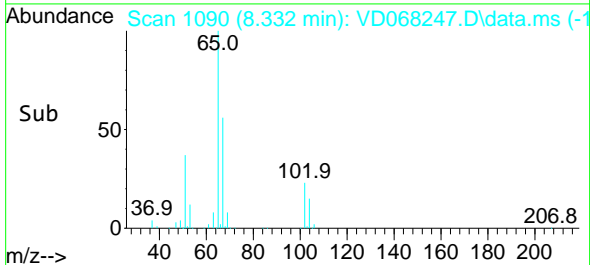
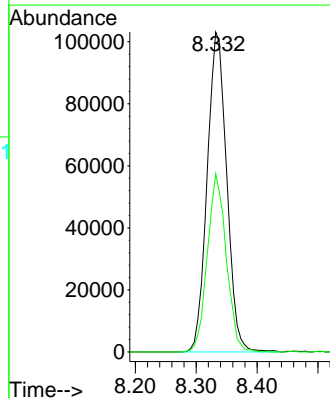
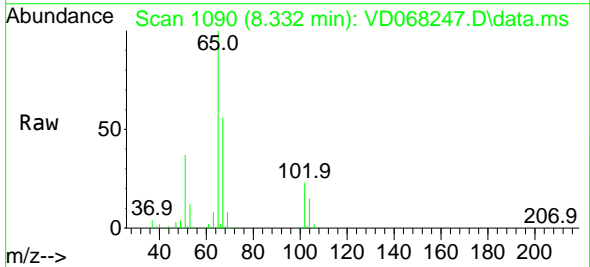
Instrument :
 MSVOA_D
 ClientSampled :

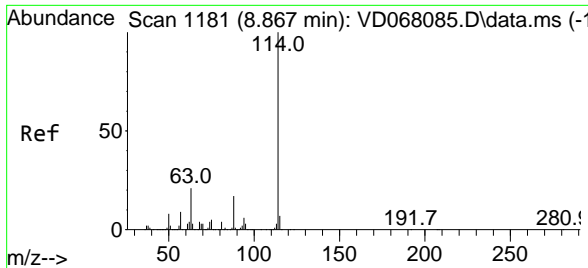
Tgt Ion	Resp	Lower	Upper
56	9544		
69	206.2	30.1	45.1#
84	144.2	82.1	123.1#



#33
 1,2-Dichloroethane-d4
 Concen: 53.62 ug/l
 RT: 8.332 min Scan# 1090
 Delta R.T. -0.006 min
 Lab File: VD068247.D
 Acq: 29 Jan 2021 18:37

Tgt Ion	Resp	Lower	Upper
65	230091		
67	53.9	0.0	105.0

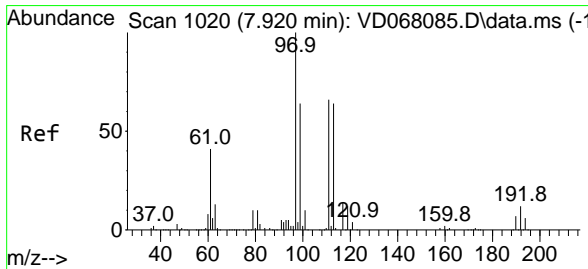
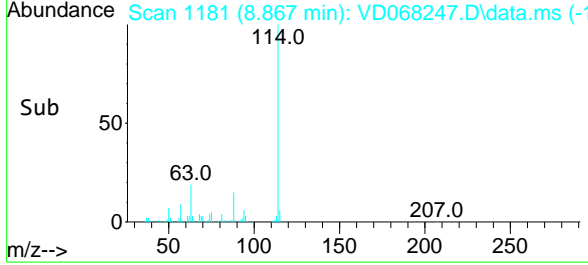
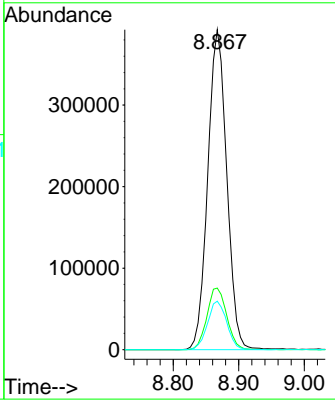
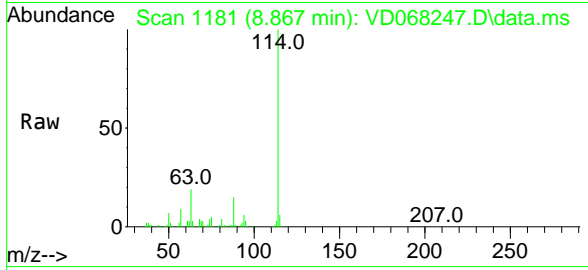




#34
 1,4-Difluorobenzene
 Concen: 50.00 ug/l
 RT: 8.867 min Scan# 1181
 Delta R.T. 0.000 min
 Lab File: VD068247.D
 Acq: 29 Jan 2021 18:37

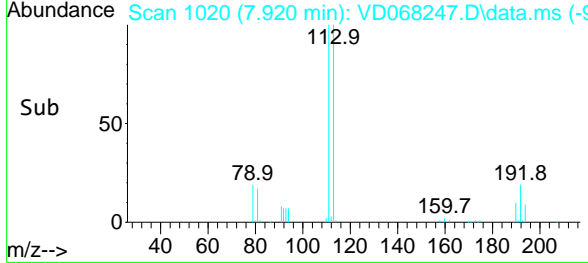
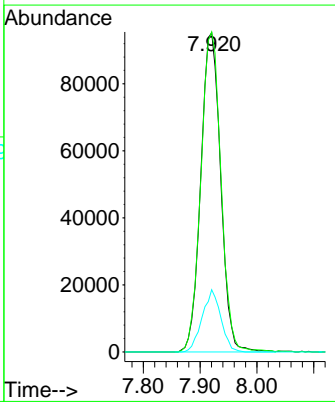
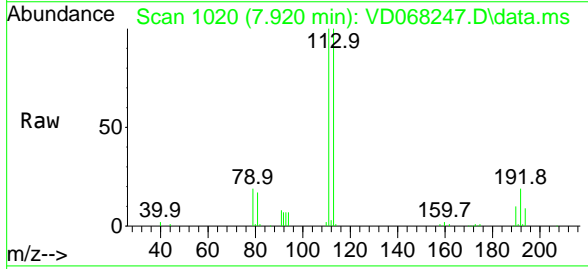
Instrument :
 MSVOA_D
 ClientSampled :

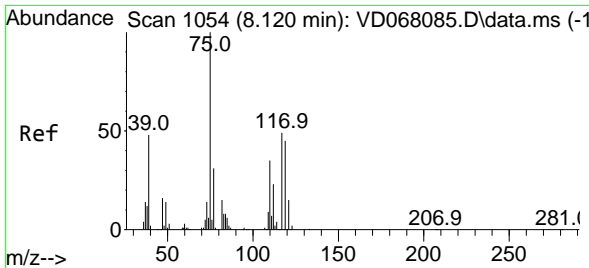
Tgt Ion	Resp	Lower	Upper
114	788393		
63	19.3	0.0	34.8
88	15.2	0.0	31.6



#35
 Dibromofluoromethane
 Concen: 52.97 ug/l
 RT: 7.920 min Scan# 1020
 Delta R.T. 0.000 min
 Lab File: VD068247.D
 Acq: 29 Jan 2021 18:37

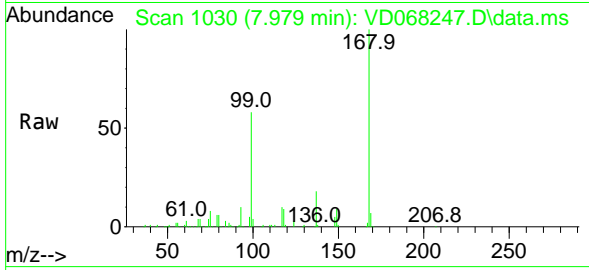
Tgt Ion	Resp	Lower	Upper
113	230863		
113	100		
111	101.5	81.4	122.0
192	18.3	16.1	24.1



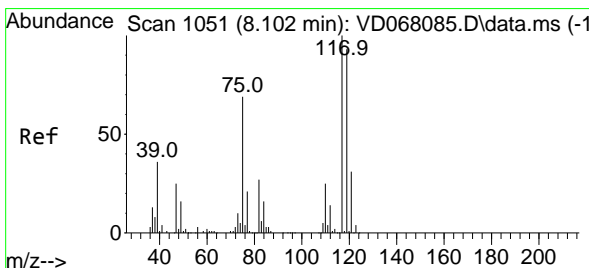
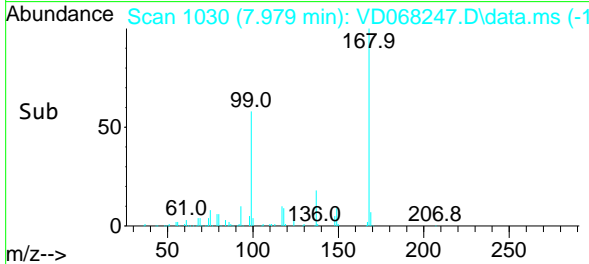
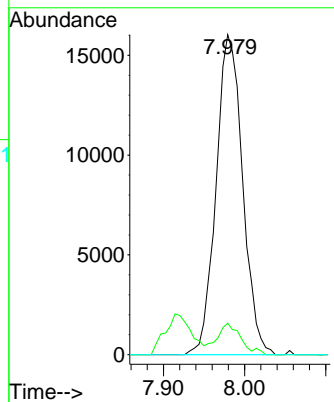


#36
 1,1-Dichloropropene
 Concen: 4.58 ug/l
 RT: 7.979 min Scan# 1030
 Delta R.T. -0.141 min
 Lab File: VD068247.D
 Acq: 29 Jan 2021 18:37

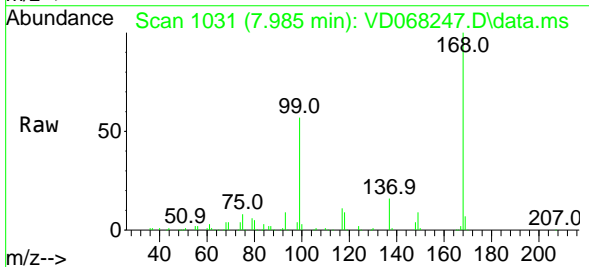
Instrument :
 MSVOA_D
 ClientSampled :



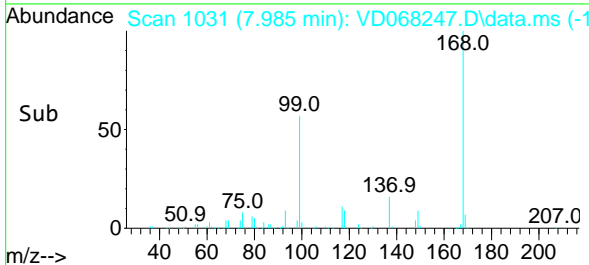
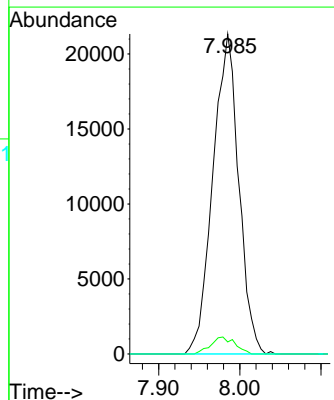
Tgt Ion: 75 Resp: 36409
 Ion Ratio Lower Upper
 75 100
 110 8.4 19.4 58.2#
 77 0.0 25.3 37.9#

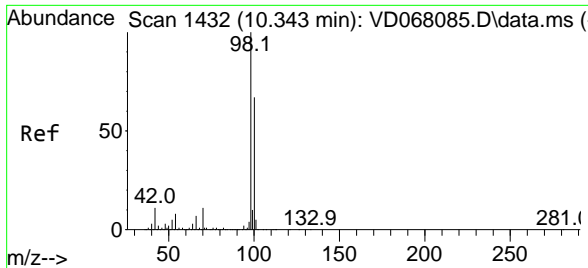


#38
 Carbon Tetrachloride
 Concen: 6.34 ug/l
 RT: 7.985 min Scan# 1031
 Delta R.T. -0.117 min
 Lab File: VD068247.D
 Acq: 29 Jan 2021 18:37



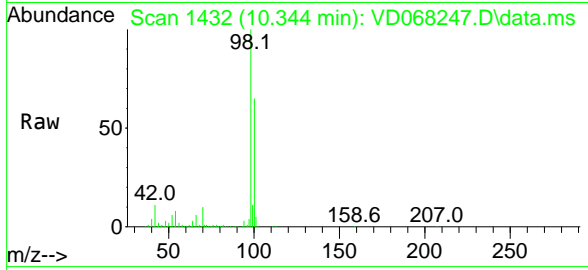
Tgt Ion: 117 Resp: 47198
 Ion Ratio Lower Upper
 117 100
 119 3.7 77.3 115.9#
 121 0.0 24.7 37.1#



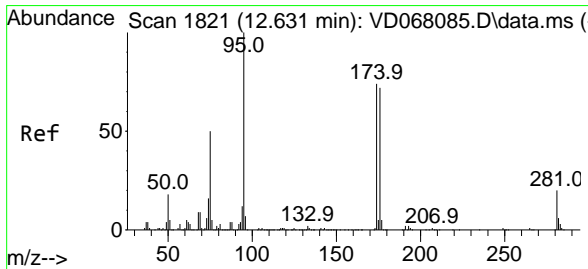
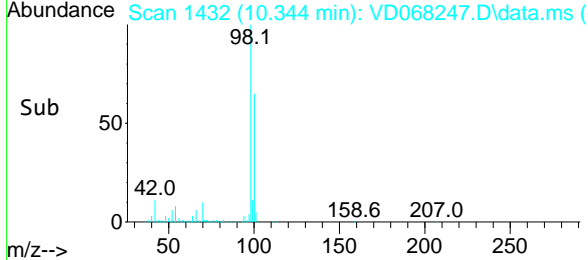
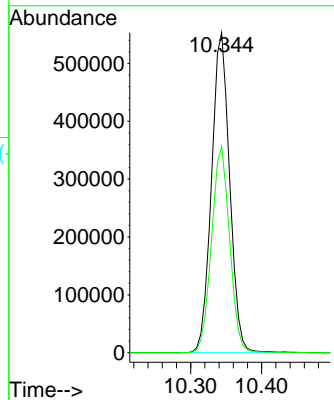


#50
 Toluene-d8
 Concen: 56.17 ug/l
 RT: 10.344 min Scan# 1432
 Delta R.T. 0.000 min
 Lab File: VD068247.D
 Acq: 29 Jan 2021 18:37

Instrument :
 MSVOA_D
 ClientSampled :

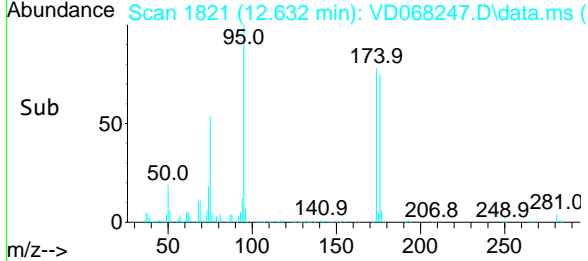
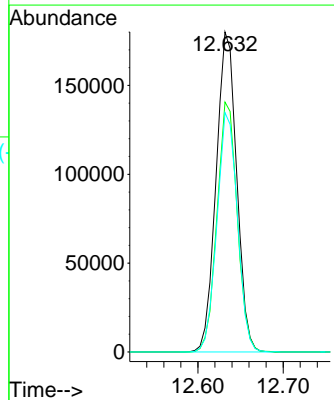
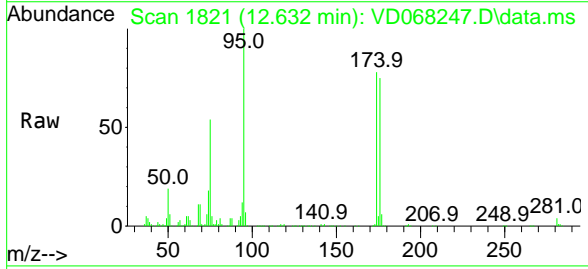


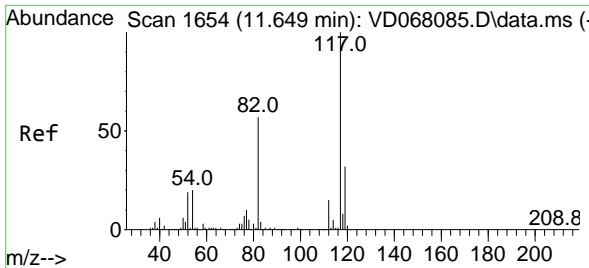
Tgt Ion: 98 Resp: 979326
 Ion Ratio Lower Upper
 98 100
 100 64.5 53.0 79.4



#62
 4-Bromofluorobenzene
 Concen: 48.07 ug/l
 RT: 12.632 min Scan# 1821
 Delta R.T. 0.000 min
 Lab File: VD068247.D
 Acq: 29 Jan 2021 18:37

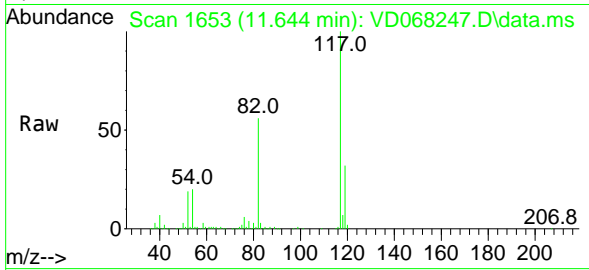
Tgt Ion: 95 Resp: 301805
 Ion Ratio Lower Upper
 95 100
 174 76.7 0.0 172.4
 176 74.4 0.0 168.4





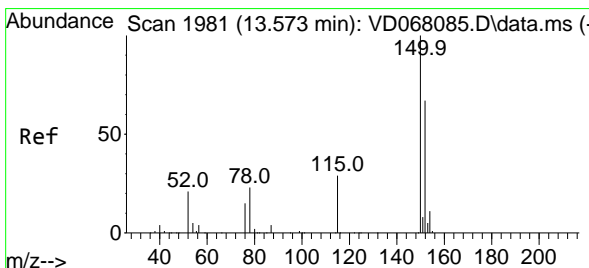
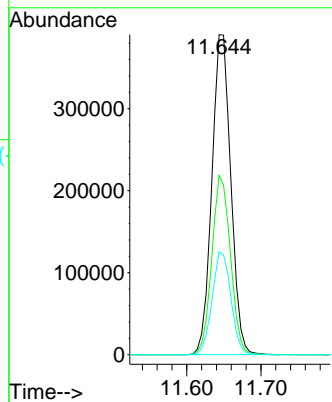
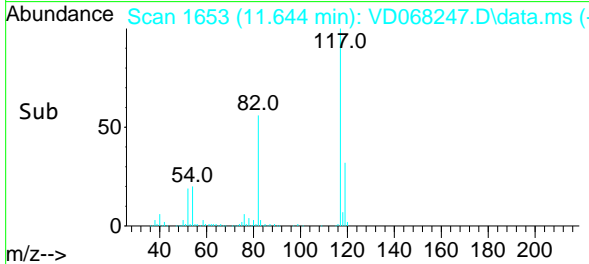
#63
 Chlorobenzene-d5
 Concen: 50.00 ug/l
 RT: 11.644 min Scan# 1653
 Delta R.T. -0.005 min
 Lab File: VD068247.D
 Acq: 29 Jan 2021 18:37

Instrument :
 MSVOA_D
 ClientSampled :

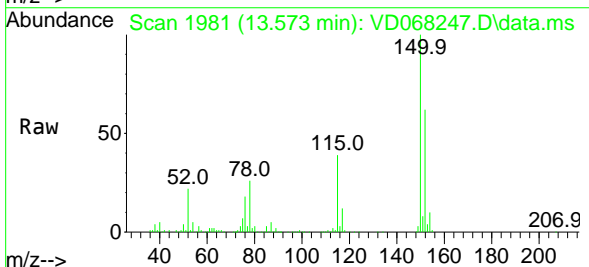


Tgt Ion:117 Resp: 692260

Ion	Ratio	Lower	Upper
117	100		
82	56.0	41.4	62.0
119	32.2	26.1	39.1

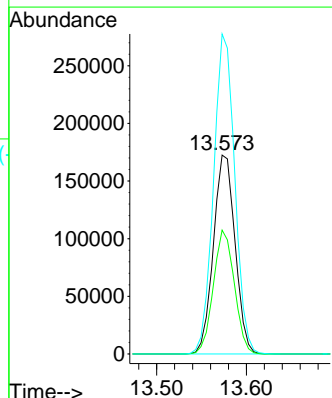
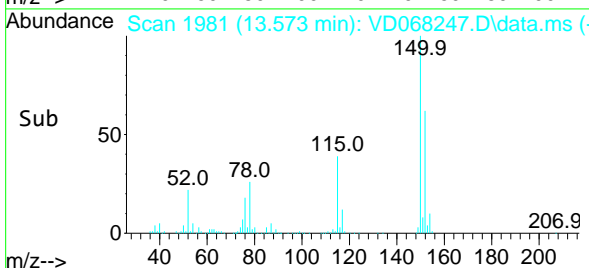


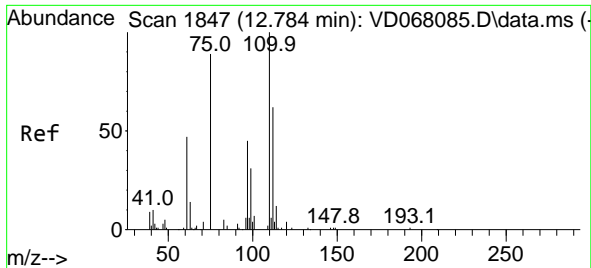
#72
 1,4-Dichlorobenzene-d4
 Concen: 50.00 ug/l
 RT: 13.573 min Scan# 1981
 Delta R.T. 0.000 min
 Lab File: VD068247.D
 Acq: 29 Jan 2021 18:37



Tgt Ion:152 Resp: 289403

Ion	Ratio	Lower	Upper
152	100		
115	60.4	28.9	86.8
150	157.3	0.0	344.4

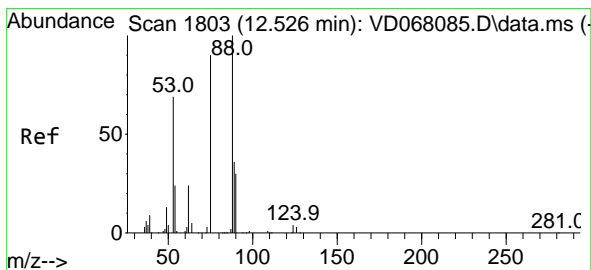
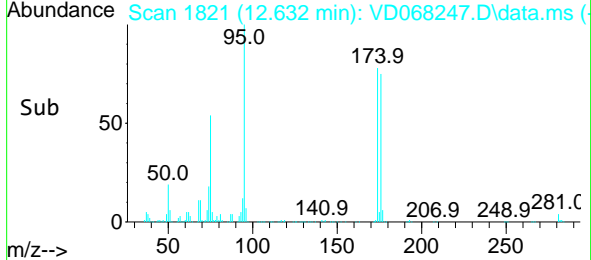
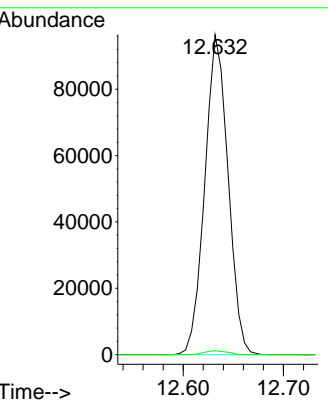
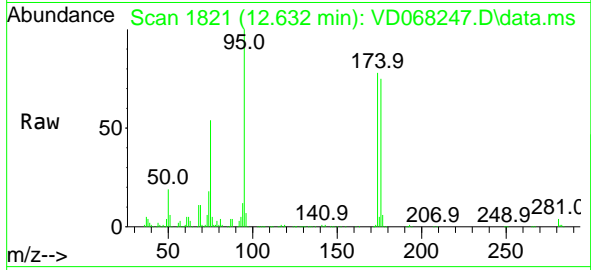




#76
 1,2,3-Trichloropropane
 Concen: 55.43 ug/l
 RT: 12.632 min Scan# 1821
 Delta R.T. -0.153 min
 Lab File: VD068247.D
 Acq: 29 Jan 2021 18:37

Instrument :
 MSVOA_D
 ClientSampled :

Tgt Ion: 75 Resp: 155103
 Ion Ratio Lower Upper
 75 100
 77 1.2 0.0 0.0#



#81
 trans-1,4-Dichloro-2-butene
 Concen: 112.16 ug/l
 RT: 12.632 min Scan# 1821
 Delta R.T. 0.106 min
 Lab File: VD068247.D
 Acq: 29 Jan 2021 18:37

Tgt Ion: 75 Resp: 155103
 Ion Ratio Lower Upper
 75 100
 53 0.0 70.2 105.2#
 89 0.0 40.3 60.5#

