

Data Path : Z:\VOASRV\HPCHEM1\MSVOA D\DATA\VD013120\  
 Data File : VD065039.D  
 Acq On : 31 Jan 2020 17:45  
 Operator : VA/SY  
 Sample : L1345-03  
 Misc : 5.00G/5.00ml/MSVOA D/SOIL  
 ALS Vial : 17 Sample Multiplier: 1

Instrument :  
 MSVOA\_D  
 ClientSampleId :  
 01-31-C

Integration Parameters: RTEINT.P

Integrator: RTE  
 Smoothing : ON  
 Sampling : 1  
 Start Thrs: 0.2  
 Stop Thrs : 0

Filtering: 5  
 Min Area: 3 % of largest Peak  
 Max Peaks: 100  
 Peak Location: TOP

If leading or trailing edge < 100 prefer < Baseline drop else tangent >  
 Peak separation: 5

Method : Z:\VOASRV\HPCHEM1\MSVOA\_D\METHOD\82D012320S.M  
 Title : SW846 8260

Signal : TIC

peak #	R.T. min	first scan	max scan	last scan	PK TY	peak height	corr. area	corr. % max.	% of total
1	2.221	45	51	52	rBV2	5713	7782	5.33%	0.548%
2	3.297	230	234	238	rVB3	1969	2802	1.92%	0.197%
3	3.373	245	247	248	rBV2	2496	1696	1.16%	0.119%
4	5.691	637	641	643	rBV3	1561	1725	1.18%	0.121%
5	5.985	687	691	694	rBV3	1162	2000	1.37%	0.141%
6	6.650	802	804	806	rBV2	1870	1711	1.17%	0.120%
7	7.538	953	955	960	rBV2	1265	2052	1.41%	0.144%
8	7.814	998	1002	1003	rVB3	1616	1747	1.20%	0.123%
9	7.914	1011	1019	1025	rBV3	25768	61751	42.29%	4.348%
10	7.985	1025	1031	1040	rVB2	38248	87541	59.95%	6.164%
11	8.214	1067	1070	1073	rBV	1480	1985	1.36%	0.140%
12	8.338	1083	1091	1098	rVB2	28282	59991	41.08%	4.224%
13	8.867	1173	1181	1188	rBV2	53831	105820	72.47%	7.451%
14	9.150	1226	1229	1232	rBV3	1384	2349	1.61%	0.165%
15	9.403	1270	1272	1275	rBV2	1696	1767	1.21%	0.124%
16	9.644	1309	1313	1317	rBV2	1926	3078	2.11%	0.217%
17	9.732	1323	1328	1330	rBV2	1511	2257	1.55%	0.159%
18	10.179	1397	1404	1407	rVV2	1031	2641	1.81%	0.186%
19	10.232	1410	1413	1414	rVB2	1768	1658	1.14%	0.117%
20	10.344	1425	1432	1439	rBV	77216	138005	94.51%	9.717%
21	10.626	1477	1480	1483	rVB	1914	1646	1.13%	0.116%
22	10.726	1493	1497	1501	rBV3	1789	2913	1.99%	0.205%
23	11.650	1647	1654	1661	rBV	85551	146024	100.00%	10.282%
24	11.861	1686	1690	1691	rBV3	1389	1826	1.25%	0.129%
25	12.020	1713	1717	1719	rBV2	1130	1663	1.14%	0.117%
26	12.144	1736	1738	1741	rBV	1154	1729	1.18%	0.122%
27	12.514	1797	1801	1802	rBV	1577	1657	1.13%	0.117%
28	12.644	1816	1823	1829	rBV	58004	100419	68.77%	7.071%
29	13.520	1968	1972	1975	rVB	2066	3321	2.27%	0.234%
30	13.585	1975	1983	1990	rBV	77806	138186	94.63%	9.730%
31	13.820	2022	2023	2027	rVB2	2212	2293	1.57%	0.161%
32	14.055	2061	2063	2065	rBV2	1499	1727	1.18%	0.122%
33	14.079	2065	2067	2069	rVB	2685	1807	1.24%	0.127%
34	14.132	2072	2076	2080	rVB3	5470	6993	4.79%	0.492%

Data Path : Z:\VOASRV\HPCHEM1\MSVOA D\DATA\VD013120\  
 Data File : VD065039.D  
 Acq On : 31 Jan 2020 17:45  
 Operator : VA/SY  
 Sample : L1345-03  
 Misc : 5.00G/5.00ml/MSVOA D/SOIL  
 ALS Vial : 17 Sample Multiplier: 1

Instrument :  
 MSVOA\_D  
 ClientSampleId :  
 01-31-C

## Integration Parameters: RTEINT.P

Integrator: RTE  
 Smoothing : ON  
 Sampling : 1  
 Start Thrs: 0.2  
 Stop Thrs : 0

Filtering: 5  
 Min Area: 3 % of largest Peak  
 Max Peaks: 100  
 Peak Location: TOP

If leading or trailing edge < 100 prefer < Baseline drop else tangent >  
 Peak separation: 5

Method : Z:\VOASRV\HPCHEM1\MSVOA\_D\METHOD\82D012320S.M  
 Title : SW846 8260

35	14.232	2089	2093	2098	rBV5	4617	7142	4.89%	0.503%
36	14.373	2113	2117	2121	rVB3	3397	4528	3.10%	0.319%
37	14.426	2121	2126	2127	rBV2	2760	3614	2.47%	0.254%
38	14.455	2127	2131	2133	rVV2	10303	14234	9.75%	1.002%
39	14.496	2133	2138	2141	rVV4	17905	26054	17.84%	1.834%
40	14.538	2141	2145	2148	rVV4	9437	14290	9.79%	1.006%
41	14.573	2149	2151	2156	rVB4	6950	10031	6.87%	0.706%
42	14.632	2160	2161	2164	rBV2	2522	1985	1.36%	0.140%
43	14.679	2164	2169	2173	rVB4	10227	15484	10.60%	1.090%
44	14.726	2173	2177	2180	rBV4	11162	18580	12.72%	1.308%
45	14.761	2181	2183	2189	rVB2	16536	24247	16.60%	1.707%
46	14.826	2189	2194	2202	rBV5	33960	84600	57.94%	5.957%
47	14.896	2202	2206	2211	rVB	19826	29141	19.96%	2.052%
48	15.114	2237	2243	2256	rVB5	27085	70276	48.13%	4.948%
49	15.220	2256	2261	2269	rVB4	18356	36165	24.77%	2.546%
50	15.302	2273	2275	2279	rVB3	4962	4750	3.25%	0.334%
51	15.367	2283	2286	2288	rBV4	4608	7146	4.89%	0.503%
52	15.414	2289	2294	2300	rVB3	19663	35276	24.16%	2.484%
53	15.520	2307	2312	2317	rBV6	11745	17160	11.75%	1.208%
54	15.608	2325	2327	2332	rVB5	6423	9448	6.47%	0.665%
55	15.714	2337	2345	2350	rBV7	7893	16033	10.98%	1.129%
56	15.838	2363	2366	2367	rBV2	3725	2890	1.98%	0.203%
57	15.873	2370	2372	2374	rBV2	3098	2357	1.61%	0.166%
58	16.014	2392	2396	2400	rVB5	5531	9828	6.73%	0.692%
59	16.049	2400	2402	2404	rBV2	1995	2197	1.50%	0.155%
60	16.355	2452	2454	2459	rBV4	2618	3771	2.58%	0.266%
61	16.443	2468	2469	2473	rVB4	2429	2823	1.93%	0.199%
62	16.508	2475	2480	2486	rVV5	5030	12948	8.87%	0.912%
63	16.573	2486	2491	2498	rVV5	11900	24376	16.69%	1.716%
64	16.620	2498	2499	2502	rVB3	3525	2721	1.86%	0.192%
65	16.702	2509	2513	2515	rBV4	2995	3573	2.45%	0.252%

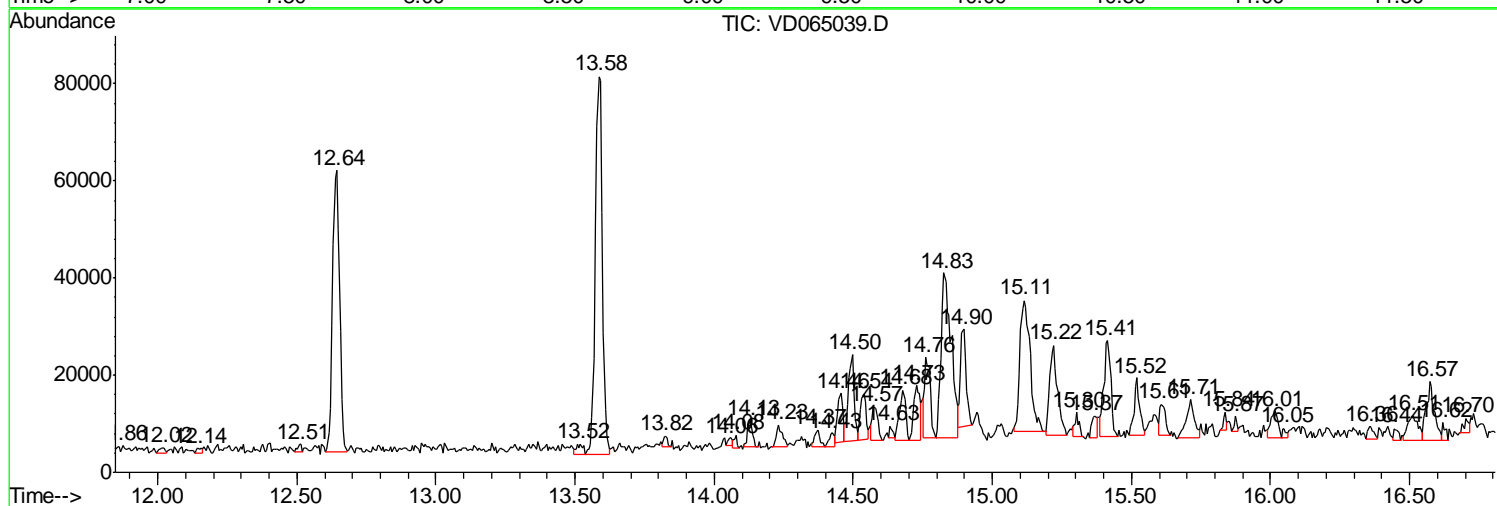
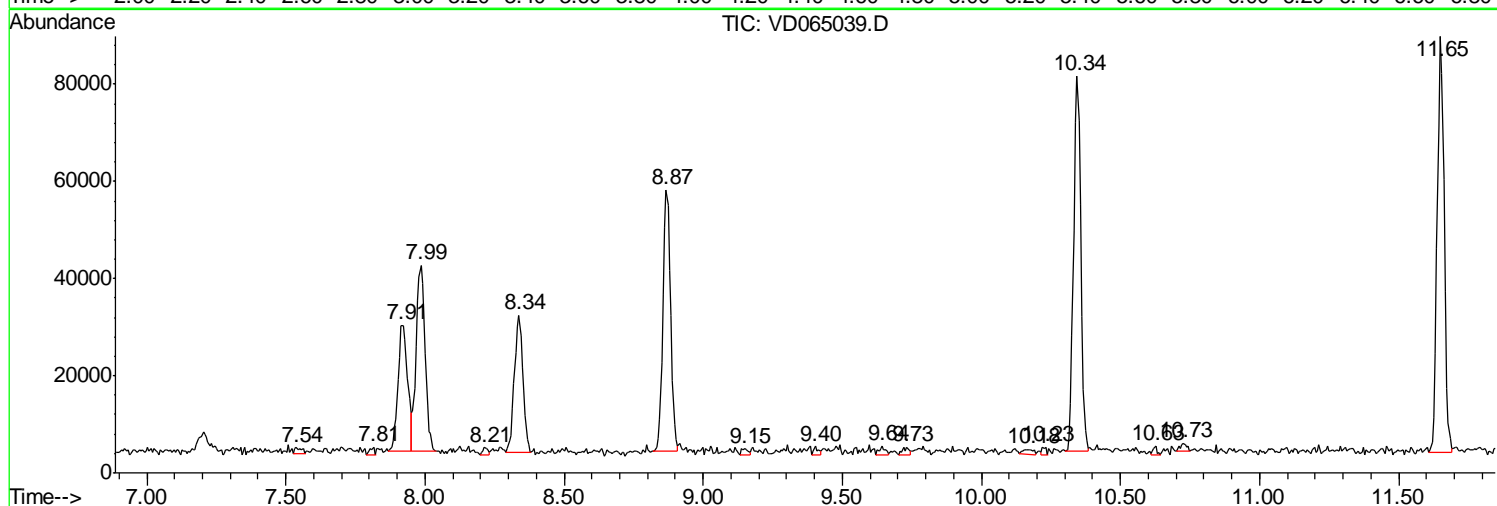
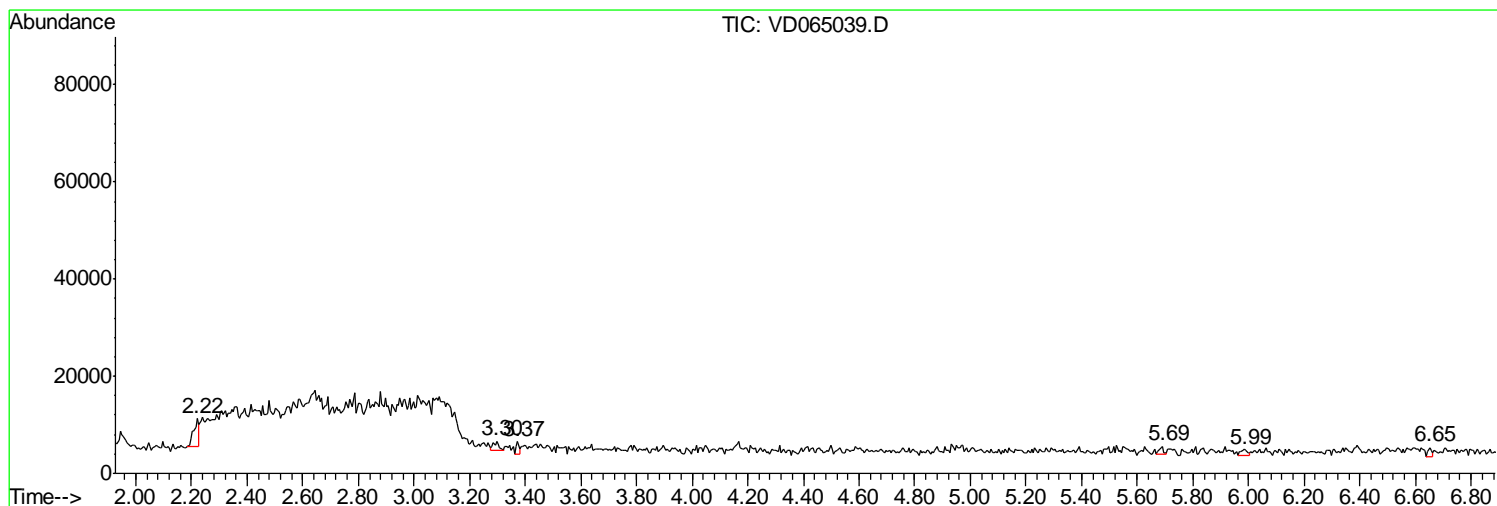
Sum of corrected areas: 1420230

Data Path : Z:\VOASRV\HPCHEM1\MSVOA D\DATA\VD013120\  
 Data File : VD065039.D  
 Acq On : 31 Jan 2020 17:45  
 Operator : VA/SY  
 Sample : L1345-03  
 Misc : 5.00G/5.00ml/MSVOA D/SOIL  
 ALS Vial : 17 Sample Multiplier: 1

**Instrument :**  
 MSVOA\_D  
**ClientSampled :**  
 01-31-C

Quant Method : Z:\VOASRV\HPCHEM1\MSVOA\_D\METHOD\82D012320S.M  
 Quant Title : SW846 8260

TIC Library : C:\DATABASE\NIST11.L  
 TIC Integration Parameters: LSCINT.P



Data Path : Z:\VOASRV\HPCHEM1\MSVOA D\DATA\VD013120\  
 Data File : VD065039.D  
 Acq On : 31 Jan 2020 17:45  
 Operator : VA/SY  
 Sample : L1345-03  
 Misc : 5.00G/5.00ml/MSVOA D/SOIL  
 ALS Vial : 17 Sample Multiplier: 1

Instrument :  
 MSVOA\_D  
 ClientSampleID :  
 01-31-C

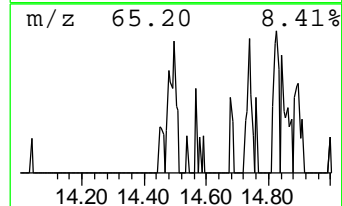
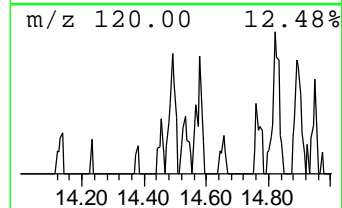
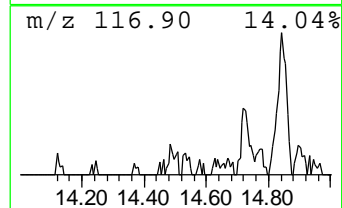
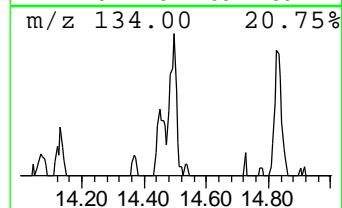
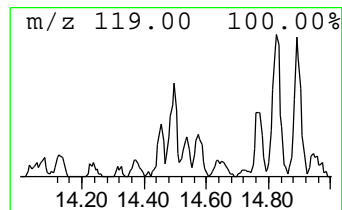
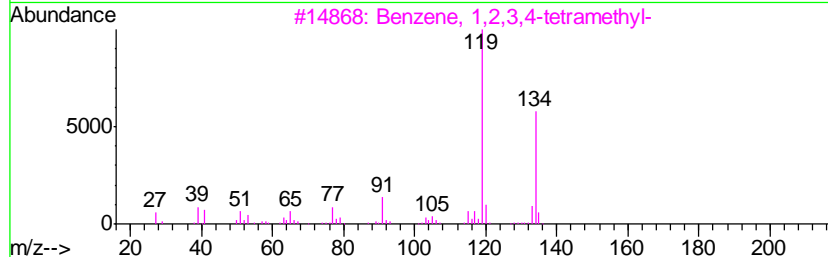
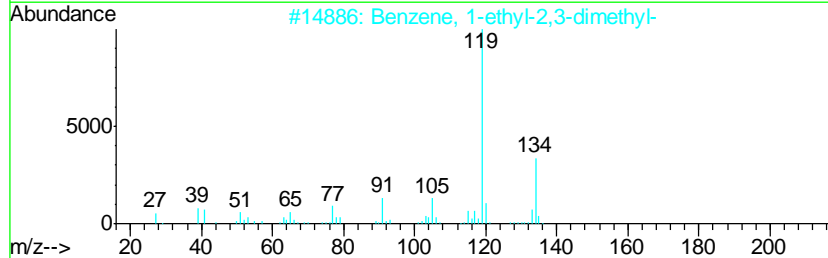
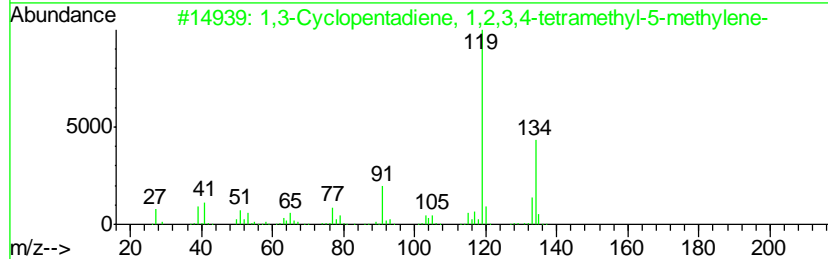
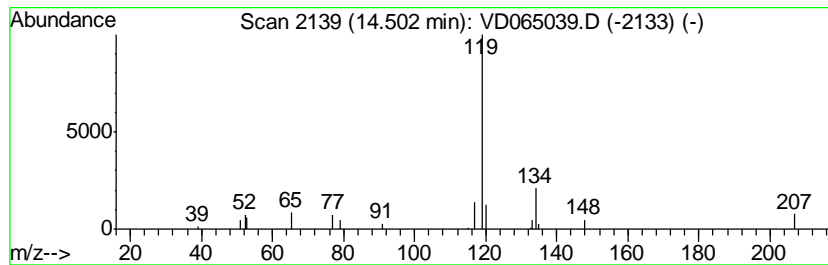
Quant Method : Z:\VOASRV\HPCHEM1\MSVOA\_D\METHOD\82D012320S.M  
 Quant Title : SW846 8260

TIC Library : C:\DATABASE\NIST11.L  
 TIC Integration Parameters: LSCINT.P

\*\*\*\*\*  
 Peak Number 1 1,3-Cyclopentadiene, 1,2,3,... Concentration Rank 5

R.T.	EstConc	Area	Relative to ISTD	R.T.
14.50	9.43 ug/l	26054	1,4-Dichlorobenzene-d4	13.58

Hit#	of	Tentative ID	MW	MolForm	CAS#	Qual
1	5	1,3-Cyclopentadiene, 1,2,3,4-tet...	134	C10H14	076089-59-3	91
2		Benzene, 1-ethyl-2,3-dimethyl-	134	C10H14	000933-98-2	91
3		Benzene, 1,2,3,4-tetramethyl-	134	C10H14	000488-23-3	91
4		Benzene, 2-ethyl-1,4-dimethyl-	134	C10H14	001758-88-9	90
5		Benzene, 1,2,4,5-tetramethyl-	134	C10H14	000095-93-2	90



Data Path : Z:\VOASRV\HPCHEM1\MSVOA D\DATA\VD013120\  
 Data File : VD065039.D  
 Acq On : 31 Jan 2020 17:45  
 Operator : VA/SY  
 Sample : L1345-03  
 Misc : 5.00G/5.00ml/MSVOA D/SOIL  
 ALS Vial : 17 Sample Multiplier: 1

Instrument :  
 MSVOA\_D  
 ClientSampled :  
 01-31-C

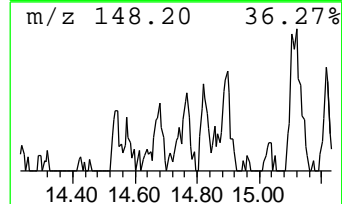
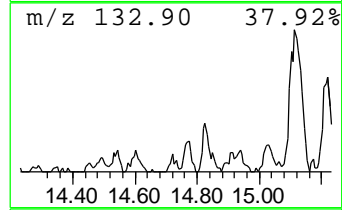
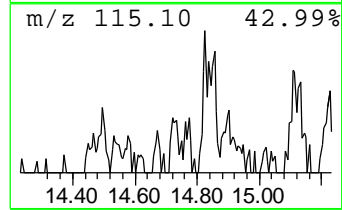
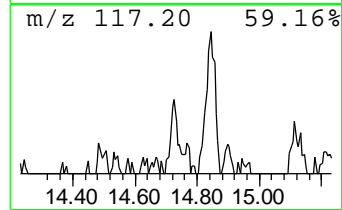
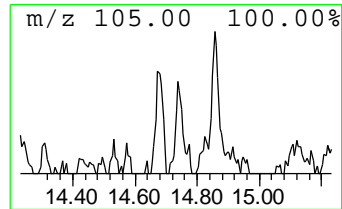
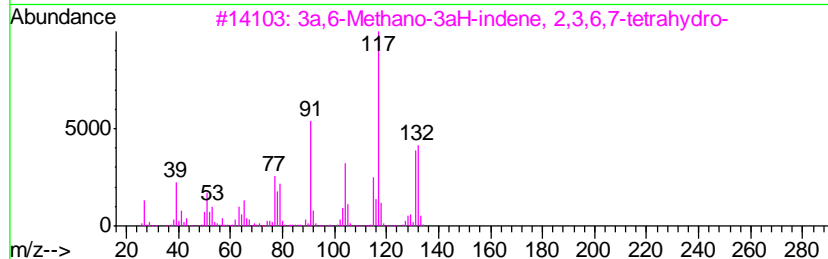
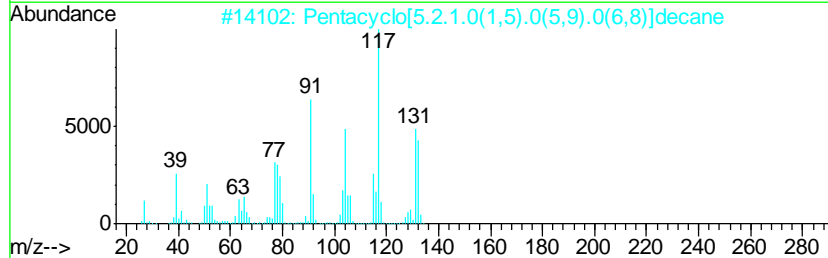
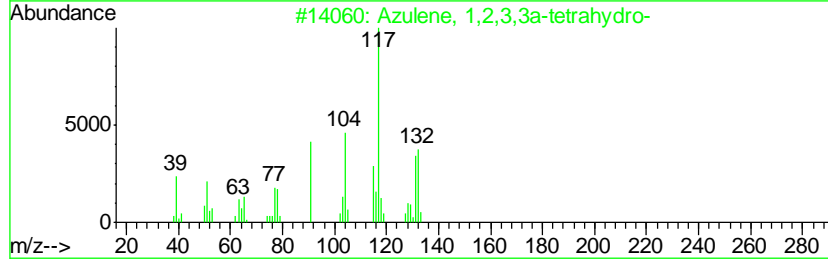
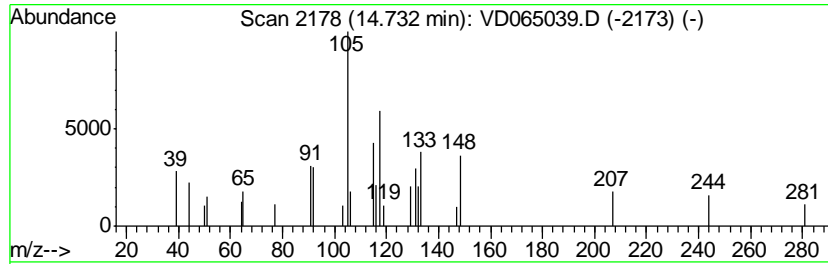
Quant Method : Z:\VOASRV\HPCHEM1\MSVOA\_D\METHOD\82D012320S.M  
 Quant Title : SW846 8260

TIC Library : C:\DATABASE\NIST11.L  
 TIC Integration Parameters: LSCINT.P

\*\*\*\*\*  
 Peak Number 2 unknown14.73 Concentration Rank 8

R.T.	EstConc	Area	Relative to ISTD	R.T.
14.73	6.72 ug/l	18580	1,4-Dichlorobenzene-d4	13.58

Hit#	of	Tentative ID	MW	MolForm	CAS#	Qual
1	5	Azulene, 1,2,3,3a-tetrahydro-	132	C10H12	033877-87-1	38
2		Pentacyclo[5.2.1.0(1,5).0(5,9).0...	132	C10H12	1000185-59-0	35
3		3a,6-Methano-3aH-indene, 2,3,6,7...	132	C10H12	098640-29-0	35
4		Benzene, 2-ethenyl-1,4-dimethyl-	132	C10H12	002039-89-6	30
5		2,4-Dimethylstyrene	132	C10H12	002234-20-0	27



Data Path : Z:\VOASRV\HPCHEM1\MSVOA D\DATA\VD013120\  
 Data File : VD065039.D  
 Acq On : 31 Jan 2020 17:45  
 Operator : VA/SY  
 Sample : L1345-03  
 Misc : 5.00G/5.00ml/MSVOA D/SOIL  
 ALS Vial : 17 Sample Multiplier: 1

Instrument :  
 MSVOA\_D  
 ClientSampleID :  
 01-31-C

Quant Method : Z:\VOASRV\HPCHEM1\MSVOA\_D\METHOD\82D012320S.M  
 Quant Title : SW846 8260

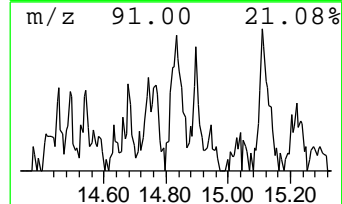
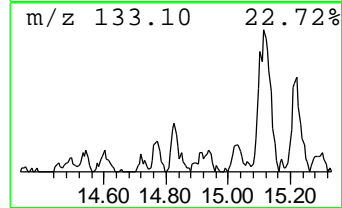
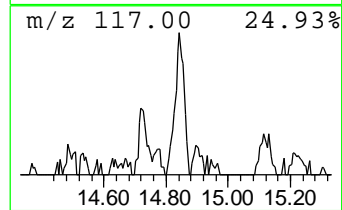
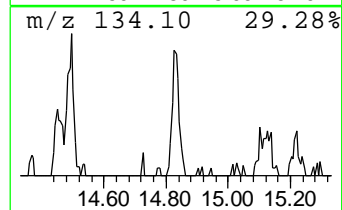
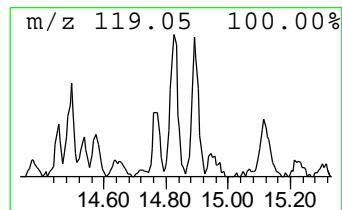
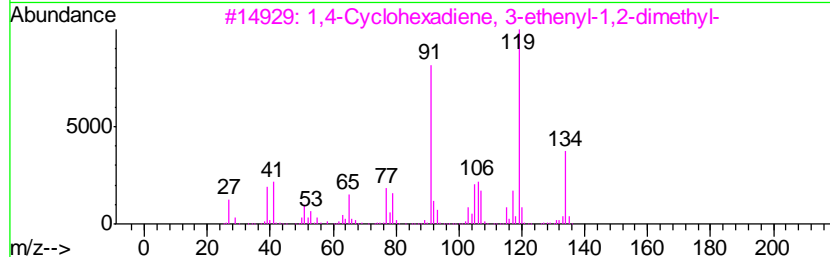
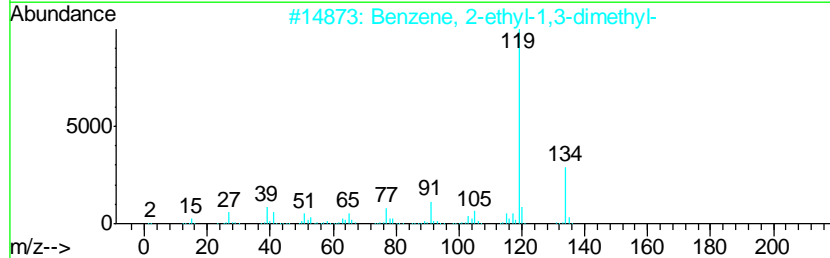
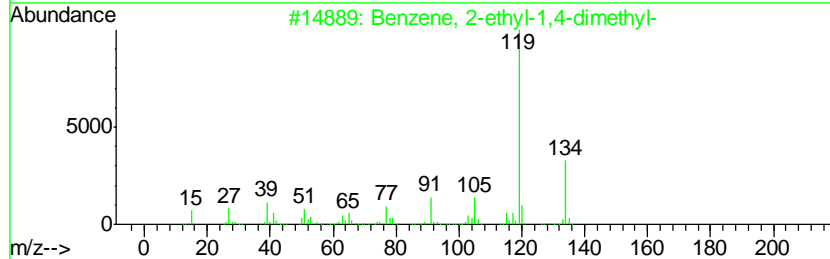
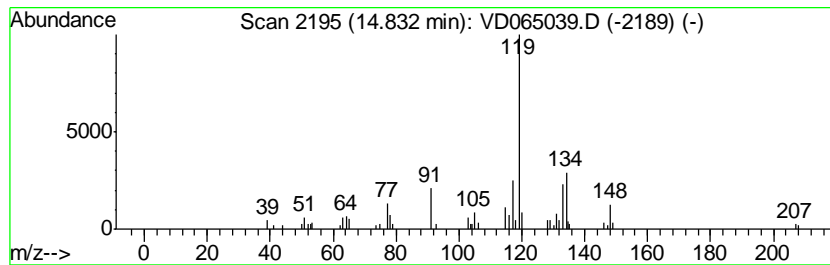
TIC Library : C:\DATABASE\NIST11.L  
 TIC Integration Parameters: LSCINT.P

\*\*\*\*\*  
 Peak Number 4 Benzene, 2-ethyl-1,4-dimethyl- Concentration Rank 1

R.T.	EstConc	Area	Relative to ISTD	R.T.
14.83	30.61 ug/l	84600	1,4-Dichlorobenzene-d4	13.58

Hit#	of	Tentative ID	MW	MolForm	CAS#	Qual
1	5	Benzene, 2-ethyl-1,4-dimethyl-	134	C10H14	001758-88-9	60
2		Benzene, 2-ethyl-1,3-dimethyl-	134	C10H14	002870-04-4	60
3		1,4-Cyclohexadiene, 3-ethenyl-1,...	134	C10H14	062338-57-2	60
4		o-Cymene	134	C10H14	000527-84-4	58
5		Benzene, 1-ethyl-2,3-dimethyl-	134	C10H14	000933-98-2	53



Data Path : Z:\VOASRV\HPCHEM1\MSVOA D\DATA\VD013120\  
 Data File : VD065039.D  
 Acq On : 31 Jan 2020 17:45  
 Operator : VA/SY  
 Sample : L1345-03  
 Misc : 5.00G/5.00ml/MSVOA D/SOIL  
 ALS Vial : 17 Sample Multiplier: 1

Instrument :  
 MSVOA\_D  
 ClientSampleID :  
 01-31-C

Quant Method : Z:\VOASRV\HPCHEM1\MSVOA\_D\METHOD\82D012320S.M  
 Quant Title : SW846 8260

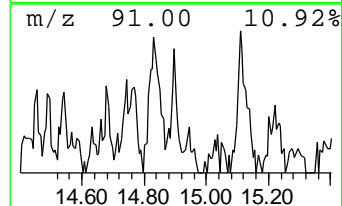
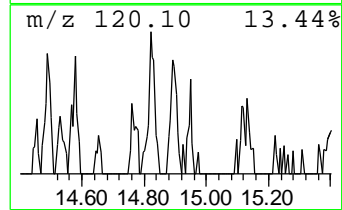
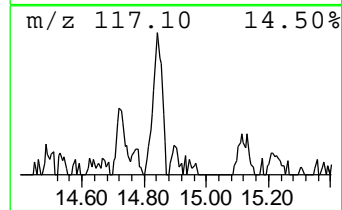
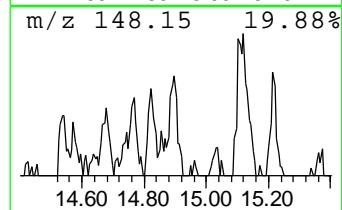
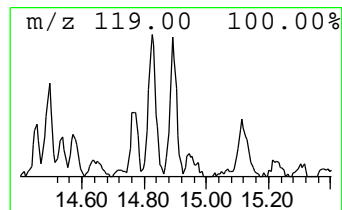
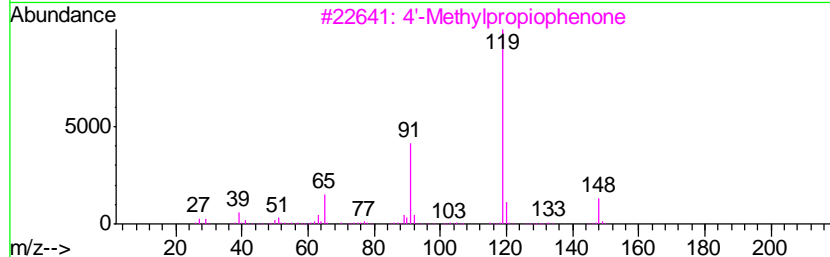
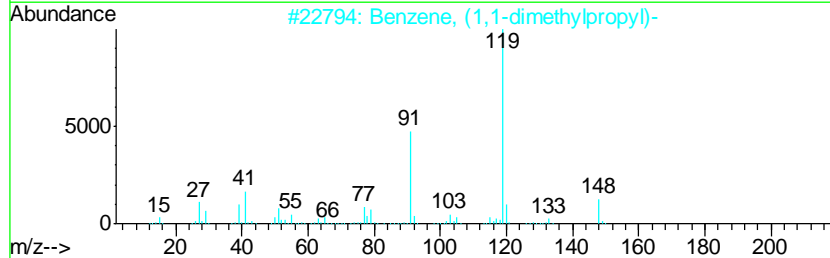
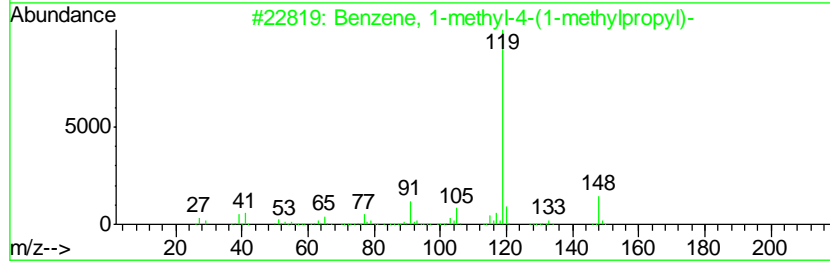
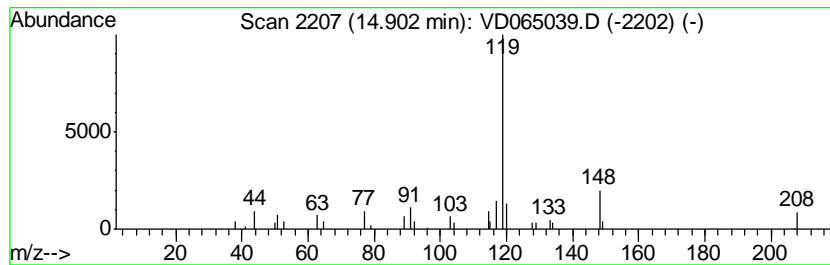
TIC Library : C:\DATABASE\NIST11.L  
 TIC Integration Parameters: LSCINT.P

\*\*\*\*\*  
 Peak Number 5 Benzene, 1-methyl-4-(1-meth... Concentration Rank 4

R.T.	EstConc	Area	Relative to ISTD	R.T.
14.90	10.54 ug/l	29141	1,4-Dichlorobenzene-d4	13.58

Hit#	of	Tentative ID	MW	MolForm	CAS#	Qual
1	5	Benzene, 1-methyl-4-(1-methylpro...	148	C11H16	001595-16-0	80
2		Benzene, (1,1-dimethylpropyl)-	148	C11H16	002049-95-8	64
3		4'-Methylpropiophenone	148	C10H12O	005337-93-9	59
4		Benzene, 4-ethyl-1,2-dimethyl-	134	C10H14	000934-80-5	59
5		Benzene, 1-ethyl-2,3-dimethyl-	134	C10H14	000933-98-2	58



Data Path : Z:\VOASRV\HPCHEM1\MSVOA D\DATA\VD013120\  
 Data File : VD065039.D  
 Acq On : 31 Jan 2020 17:45  
 Operator : VA/SY  
 Sample : L1345-03  
 Misc : 5.00G/5.00ml/MSVOA D/SOIL  
 ALS Vial : 17 Sample Multiplier: 1

Instrument :  
 MSVOA\_D  
 ClientSampleID :  
 01-31-C

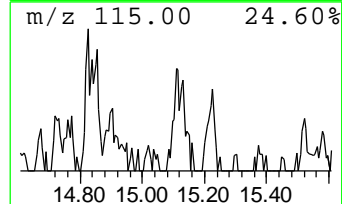
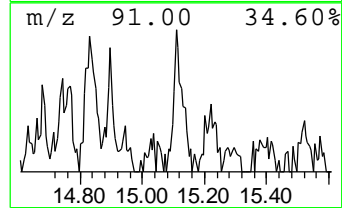
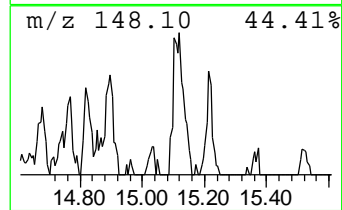
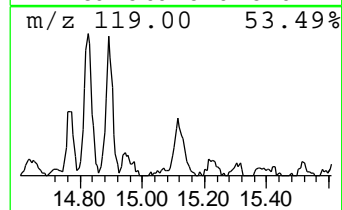
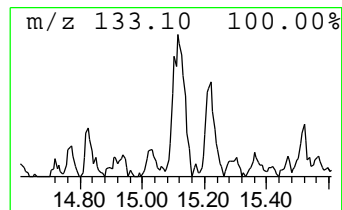
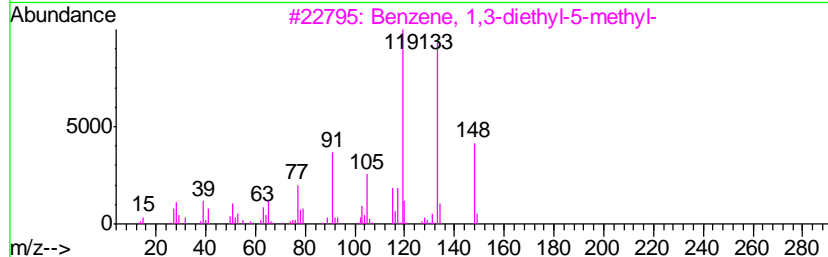
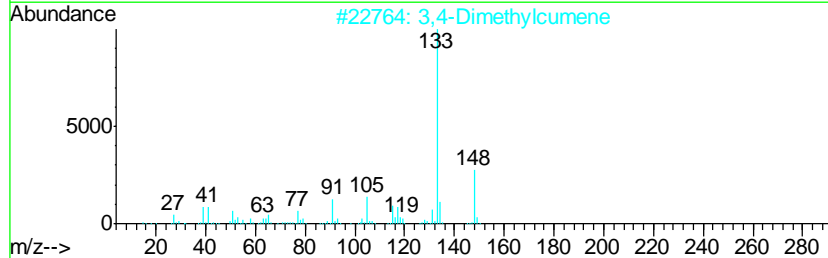
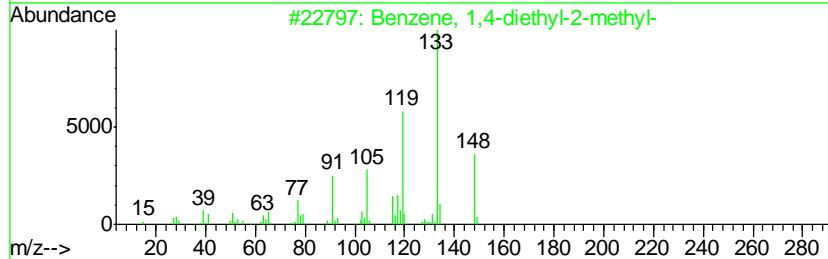
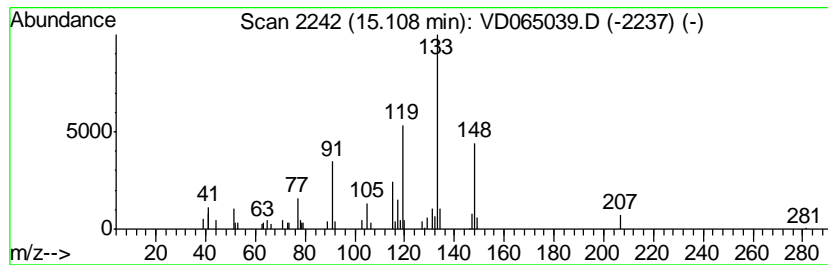
Quant Method : Z:\VOASRV\HPCHEM1\MSVOA\_D\METHOD\82D012320S.M  
 Quant Title : SW846 8260

TIC Library : C:\DATABASE\NIST11.L  
 TIC Integration Parameters: LSCINT.P

\*\*\*\*\*  
 Peak Number 6 Benzene, 1,4-diethyl-2-methyl- Concentration Rank 2

R.T.	EstConc	Area	Relative to ISTD	R.T.
15.11	25.43 ug/l	70276	1,4-Dichlorobenzene-d4	13.58

Hit#	of	Tentative ID	MW	MolForm	CAS#	Qual
1	5	Benzene, 1,4-diethyl-2-methyl-	148	C11H16	013632-94-5	87
2		3,4-Dimethylcumene	148	C11H16	1000370-34-1	76
3		Benzene, 1,3-diethyl-5-methyl-	148	C11H16	002050-24-0	70
4		Benzene, 2,4-diethyl-1-methyl-	148	C11H16	001758-85-6	70
5		Benzene, 1-ethyl-2,4,5-trimethyl-	148	C11H16	017851-27-3	64





Data Path : Z:\VOASRV\HPCHEM1\MSVOA D\DATA\VD013120\  
 Data File : VD065039.D  
 Acq On : 31 Jan 2020 17:45  
 Operator : VA/SY  
 Sample : L1345-03  
 Misc : 5.00G/5.00ml/MSVOA D/SOIL  
 ALS Vial : 17 Sample Multiplier: 1

Instrument :  
 MSVOA\_D  
 ClientSampled :  
 01-31-C

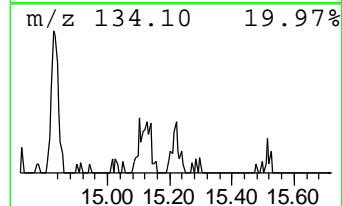
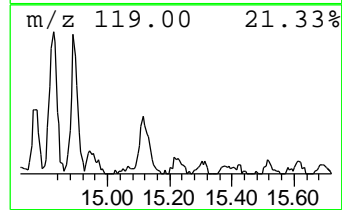
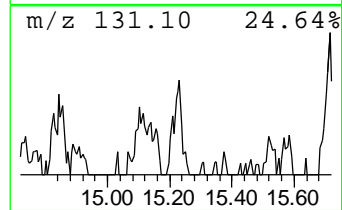
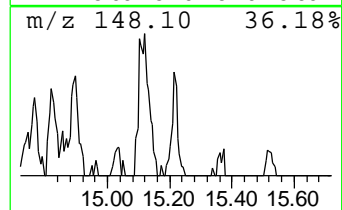
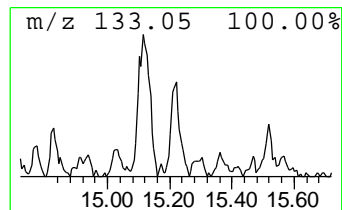
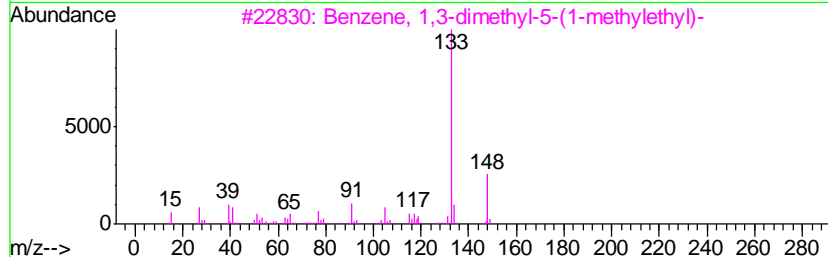
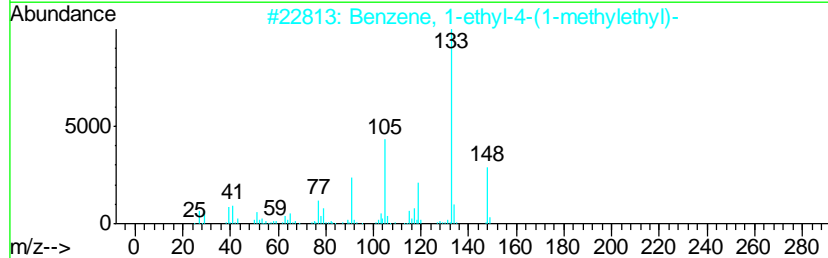
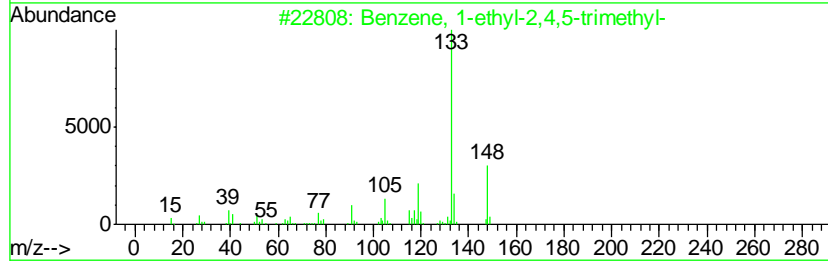
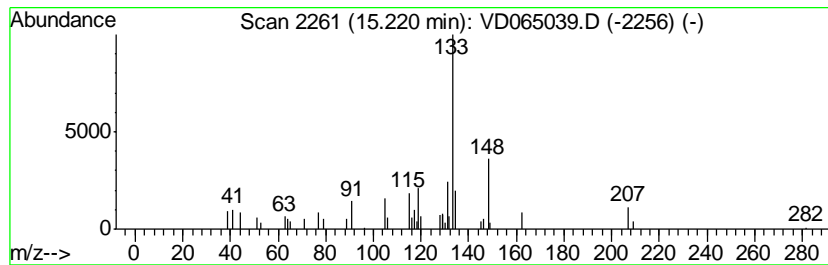
Quant Method : Z:\VOASRV\HPCHEM1\MSVOA\_D\METHOD\82D012320S.M  
 Quant Title : SW846 8260

TIC Library : C:\DATABASE\NIST11.L  
 TIC Integration Parameters: LSCINT.P

\*\*\*\*\*  
 Peak Number 7 Benzene, 1-ethyl-2,4,5-trim... Concentration Rank 3

R.T.	EstConc	Area	Relative to ISTD	R.T.
15.22	13.09 ug/l	36165	1,4-Dichlorobenzene-d4	13.58

Hit#	of	Tentative ID	MW	MolForm	CAS#	Qual
1	5	Benzene, 1-ethyl-2,4,5-trimethyl-	148	C11H16	017851-27-3	76
2		Benzene, 1-ethyl-4-(1-methylethyl)-	148	C11H16	004218-48-8	58
3		Benzene, 1,3-dimethyl-5-(1-methy...	148	C11H16	004706-90-5	52
4		3,4-Dimethylcumene	148	C11H16	1000370-34-1	52
5		2-tert-Butyltoluene	148	C11H16	001074-92-6	50



Data Path : Z:\VOASRV\HPCHEM1\MSVOA D\DATA\VD013120\  
 Data File : VD065039.D  
 Acq On : 31 Jan 2020 17:45  
 Operator : VA/SY  
 Sample : L1345-03  
 Misc : 5.00G/5.00ml/MSVOA D/SOIL  
 ALS Vial : 17 Sample Multiplier: 1

Instrument :  
 MSVOA\_D  
 ClientSampled :  
 01-31-C

Quant Method : Z:\VOASRV\HPCHEM1\MSVOA\_D\METHOD\82D012320S.M  
 Quant Title : SW846 8260

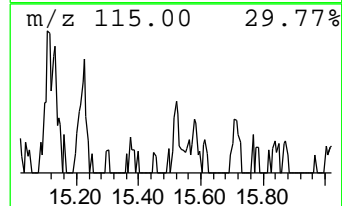
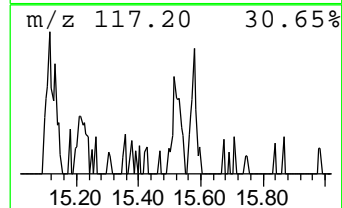
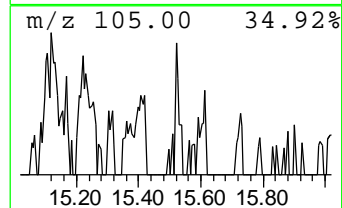
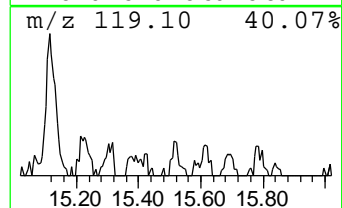
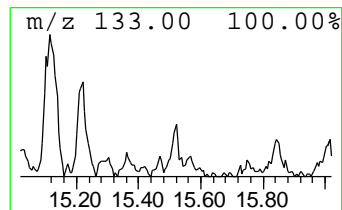
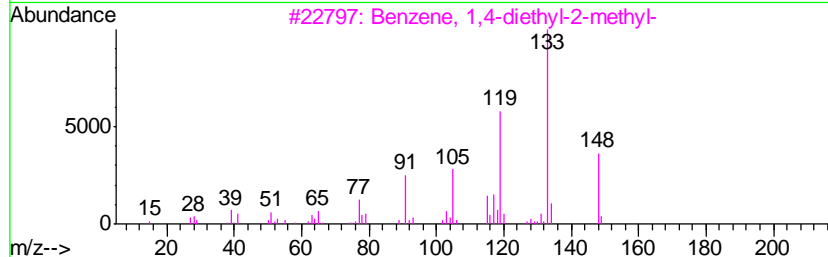
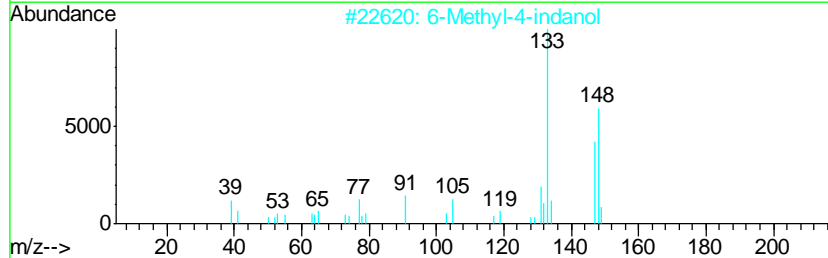
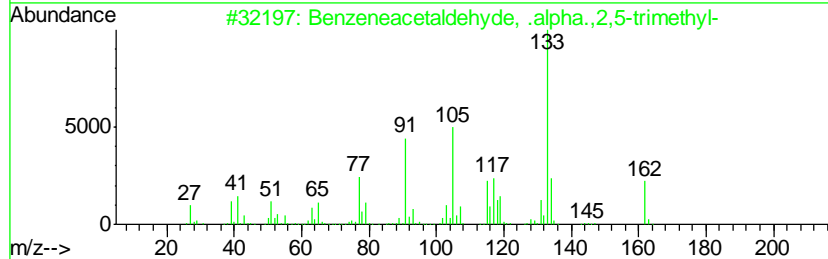
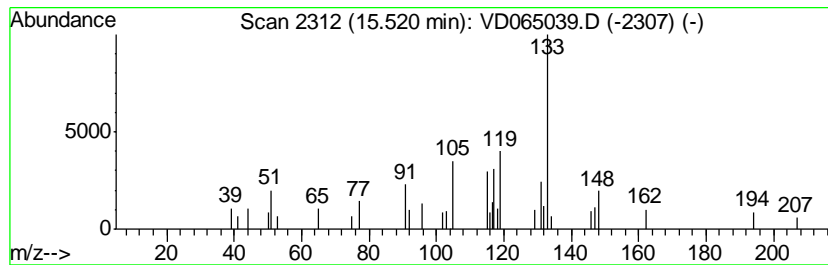
TIC Library : C:\DATABASE\NIST11.L  
 TIC Integration Parameters: LSCINT.P

\*\*\*\*\*  
 Peak Number 8 unknown15.52 Concentration Rank 9

R.T.	EstConc	Area	Relative to ISTD	R.T.
15.52	6.21 ug/l	17160	1,4-Dichlorobenzene-d4	13.58

Hit#	of	Tentative ID	MW	MolForm	CAS#	Qual
1	5	Benzeneacetaldehyde, .alpha.,2,5...	162	C11H14O	052417-50-2	38
2		6-Methyl-4-indanol	148	C10H12O	020294-32-0	38
3		Benzene, 1,4-diethyl-2-methyl-	148	C11H16	013632-94-5	35
4		Benzene, 1-ethyl-4-(1-methylethyl)-	148	C11H16	004218-48-8	35
5		Benzene, 2,4-diethyl-1-methyl-	148	C11H16	001758-85-6	30



Data Path : Z:\VOASRV\HPCHEM1\MSVOA D\DATA\VD013120\  
 Data File : VD065039.D  
 Acq On : 31 Jan 2020 17:45  
 Operator : VA/SY  
 Sample : L1345-03  
 Misc : 5.00G/5.00ml/MSVOA D/SOIL  
 ALS Vial : 17 Sample Multiplier: 1

Instrument :  
 MSVOA\_D  
 ClientSampleID :  
 01-31-C

Quant Method : Z:\VOASRV\HPCHEM1\MSVOA\_D\METHOD\82D012320S.M  
 Quant Title : SW846 8260

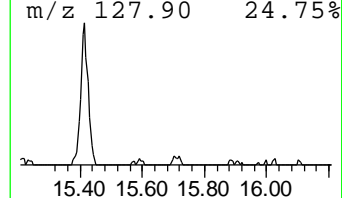
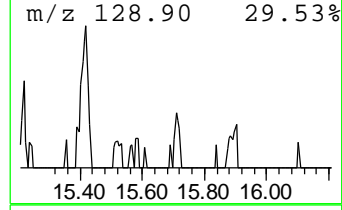
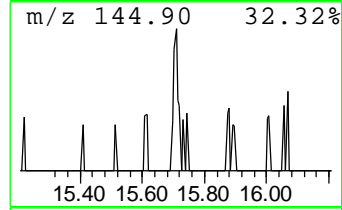
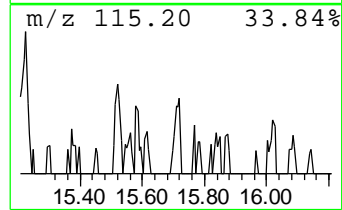
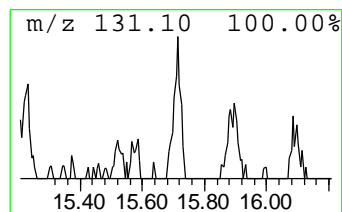
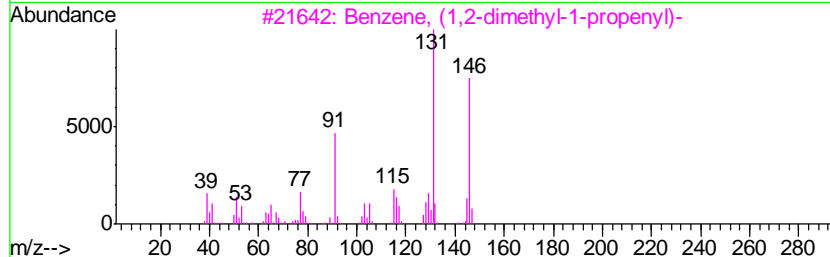
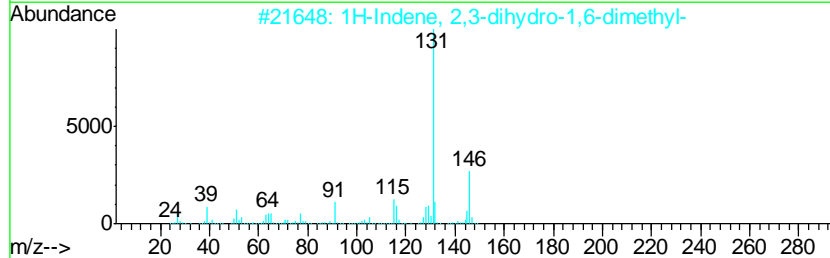
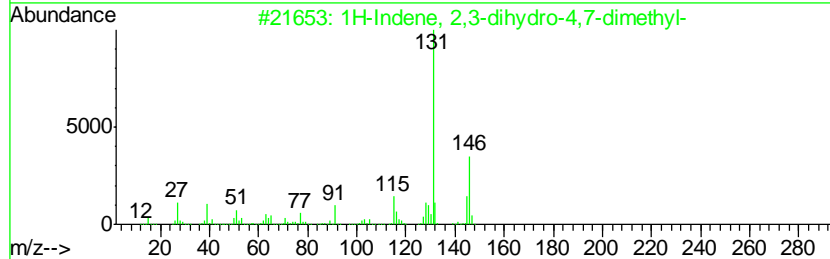
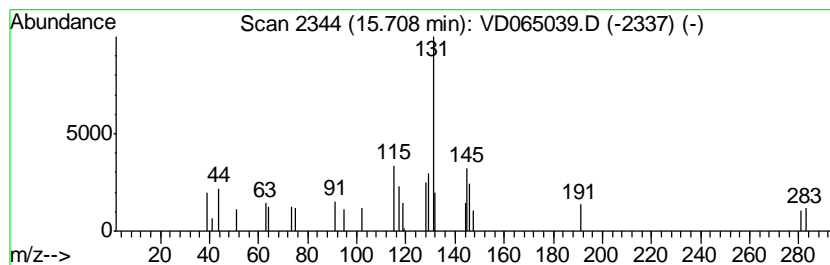
TIC Library : C:\DATABASE\NIST11.L  
 TIC Integration Parameters: LSCINT.P

\*\*\*\*\*  
 Peak Number 9 1H-Indene, 2,3-dihydro-4,7-... Concentration Rank 10

R.T.	EstConc	Area	Relative to ISTD	R.T.
15.71	5.80 ug/l	16033	1,4-Dichlorobenzene-d4	13.58

Hit#	of	Tentative ID	MW	MolForm	CAS#	Qual
1	5	1H-Indene, 2,3-dihydro-4,7-dimet...	146	C11H14	006682-71-9	72
2		1H-Indene, 2,3-dihydro-1,6-dimet...	146	C11H14	017059-48-2	72
3		Benzene, (1,2-dimethyl-1-propenyl)-	146	C11H14	000769-57-3	72
4		Benzene, (1-methyl-1-butenyl)-	146	C11H14	053172-84-2	72
5		Benzene, (2-methyl-1-butenyl)-	146	C11H14	056253-64-6	72



Data Path : Z:\VOASRV\HPCHEM1\MSVOA D\DATA\VD013120\  
 Data File : VD065039.D  
 Acq On : 31 Jan 2020 17:45  
 Operator : VA/SY  
 Sample : L1345-03  
 Misc : 5.00G/5.00ml/MSVOA D/SOIL  
 ALS Vial : 17 Sample Multiplier: 1

Instrument :  
 MSVOA\_D  
 ClientSampled :  
 01-31-C

Quant Method : Z:\VOASRV\HPCHEM1\MSVOA\_D\METHOD\82D012320S.M  
 Quant Title : SW846 8260

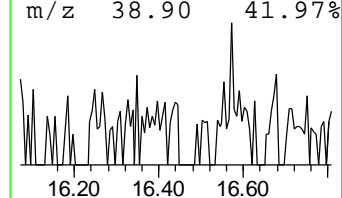
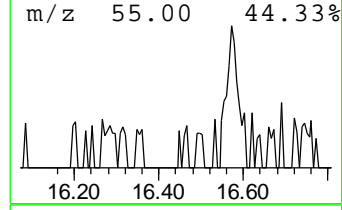
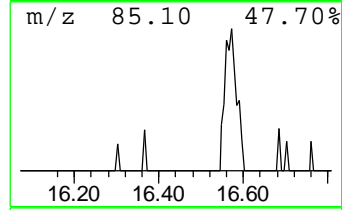
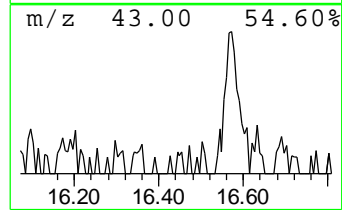
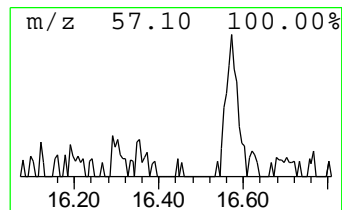
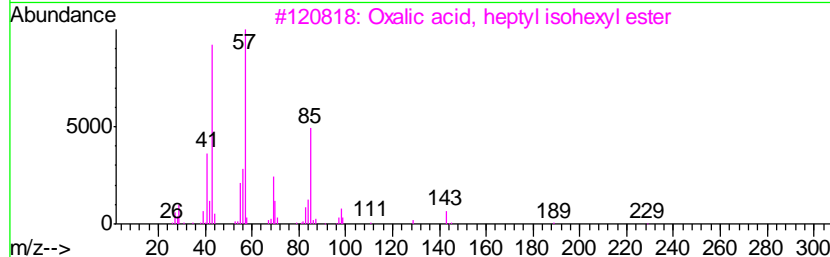
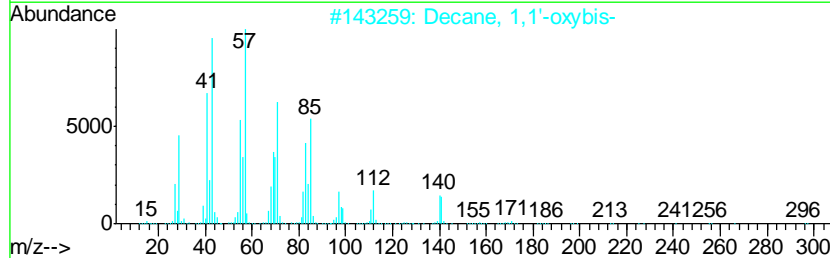
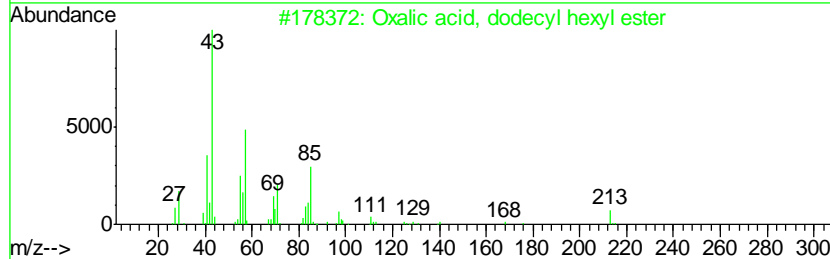
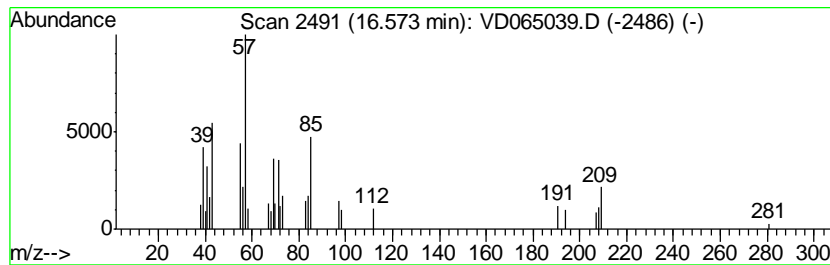
TIC Library : C:\DATABASE\NIST11.L  
 TIC Integration Parameters: LSCINT.P

\*\*\*\*\*  
 Peak Number 10 unknown16.57 Concentration Rank 6

R.T.	EstConc	Area	Relative to ISTD	R.T.
16.57	8.82 ug/l	24376	1,4-Dichlorobenzene-d4	13.58

Hit#	of	Tentative ID	MW	MolForm	CAS#	Qual
1	5	Oxalic acid, dodecyl hexyl ester	342	C20H38O4	1000309-24-6	38
2		Decane, 1,1'-oxybis-	298	C20H42O	002456-28-2	37
3		Oxalic acid, heptyl isohexyl ester	272	C15H28O4	1000309-33-1	35
4		Ether, heptyl hexyl	200	C13H28O	007289-40-9	32
5		Dodecane	170	C12H26	000112-40-3	32



Data Path : Z:\VOASRV\HPCHEM1\MSVOA\_D\DATA\VD013120\  
 Data File : VD065039.D  
 Acq On : 31 Jan 2020 17:45  
 Operator : VA/SY  
 Sample : L1345-03  
 Misc : 5.00G/5.00ml/MSVOA\_D/SOIL  
 ALS Vial : 17 Sample Multiplier: 1

Instrument :  
 MSVOA\_D  
 ClientSampleId :  
 01-31-C

Quant Method : Z:\VOASRV\HPCHEM1\MSVOA\_D\METHOD\82D012320S.M  
 Quant Title : SW846 8260

TIC Library : C:\DATABASE\NIST11.L  
 TIC Integration Parameters: LSCINT.P

TIC Top Hit name	RT	EstConc	Units	Response	--Internal Standard--			
					#	RT	Resp	Conc
1,3-Cyclopentadie...	14.50	9.4	ug/l	26054	4	13.58	138186	50.0
unknown14.73	14.73	6.7	ug/l	18580	4	13.58	138186	50.0
Benzene, 2-ethyl-...	14.83	30.6	ug/l	84600	4	13.58	138186	50.0
Benzene, 1-methyl...	14.90	10.5	ug/l	29141	4	13.58	138186	50.0
Benzene, 1,4-diet...	15.11	25.4	ug/l	70276	4	13.58	138186	50.0
Benzene, 1-ethyl-...	15.22	13.1	ug/l	36165	4	13.58	138186	50.0
unknown15.52	15.52	6.2	ug/l	17160	4	13.58	138186	50.0
1H-Indene, 2,3-di...	15.71	5.8	ug/l	16033	4	13.58	138186	50.0
unknown16.57	16.57	8.8	ug/l	24376	4	13.58	138186	50.0