

Data Path : Z:\voasrv\HPCHEM1\MSVOA_D\Data\VD013122\
 Data File : VD071843.D
 Acq On : 31 Jan 2022 14:15
 Operator : VA/SY
 Sample : N1325-16
 Misc : 3.74G/5.00ml/MSVOA_D/SOIL
 ALS Vial : 1 Sample Multiplier: 1

Instrument :
 MSVOA_D
 ClientSampleId :
 TEX-2

Quant Time: Jan 31 15:41:13 2022
 Quant Method : Z:\voasrv\HPCHEM1\MSVOA_D\Method\82D012622S.M
 Quant Title : SW846 8260
 QLast Update : Thu Jan 27 06:04:38 2022
 Response via : Initial Calibration

Compound	R.T.	QIon	Response	Conc	Units	Dev(Min)

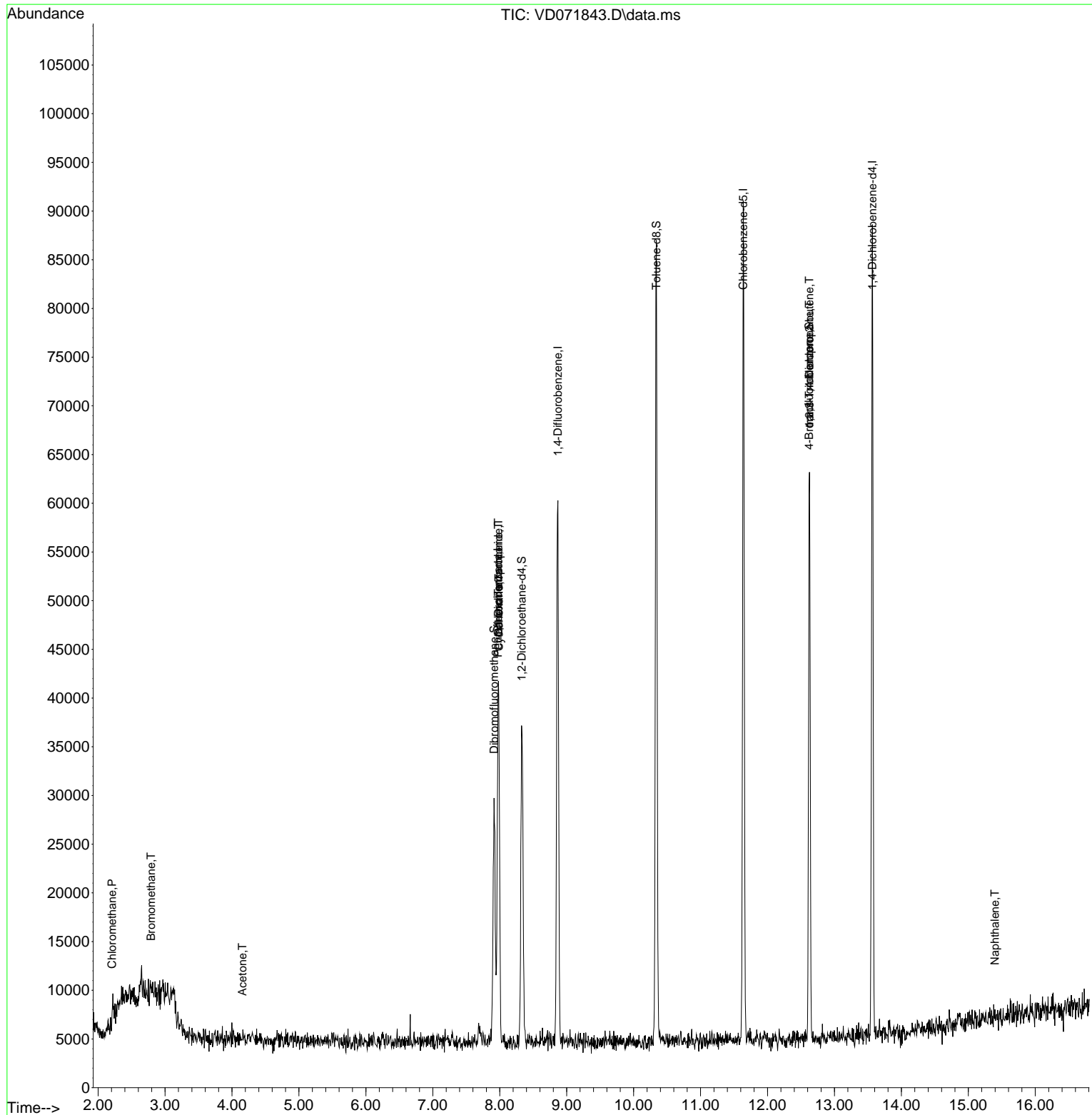
Internal Standards						
1) Pentafluorobenzene	7.973	168	26599	50.000	ug/l	0.00
34) 1,4-Difluorobenzene	8.867	114	43814	50.000	ug/l	0.00
63) Chlorobenzene-d5	11.638	117	44628	50.000	ug/l	0.00
72) 1,4-Dichlorobenzene-d4	13.567	152	19402	50.000	ug/l	0.00
System Monitoring Compounds						
33) 1,2-Dichloroethane-d4	8.326	65	27693	82.371	ug/l	0.00
Spiked Amount	50.000	Range 50 - 163	Recovery	=	164.740%#	
35) Dibromofluoromethane	7.914	113	17475	60.677	ug/l	0.00
Spiked Amount	50.000	Range 54 - 147	Recovery	=	121.360%	
50) Toluene-d8	10.338	98	55172	51.295	ug/l	0.00
Spiked Amount	50.000	Range 49 - 140	Recovery	=	102.580%	
62) 4-Bromofluorobenzene	12.620	95	18332	48.806	ug/l	0.00
Spiked Amount	50.000	Range 25 - 144	Recovery	=	97.620%	
Target Compounds						
						Qvalue
3) Chloromethane	2.209	50	603	1.597	ug/l #	40
5) Bromomethane	2.791	94	904	3.465	ug/l	90
16) Acetone	4.156	43	580	6.302	ug/l #	47
20) Methylene Chloride	4.950	84	57	Below Cal	#	2
31) Cyclohexane	7.985	56	703	1.095	ug/l #	52
36) 1,1-Dichloropropene	7.979	75	2376	4.807	ug/l #	43
38) Carbon Tetrachloride	7.979	117	3394	6.943	ug/l #	13
76) 1,2,3-Trichloropropane	12.626	75	10961	53.606	ug/l #	100
81) trans-1,4-Dichloro-2-b...	12.626	75	10961	131.805	ug/l #	7
95) Naphthalene	15.396	128	425	2.066	ug/l #	70

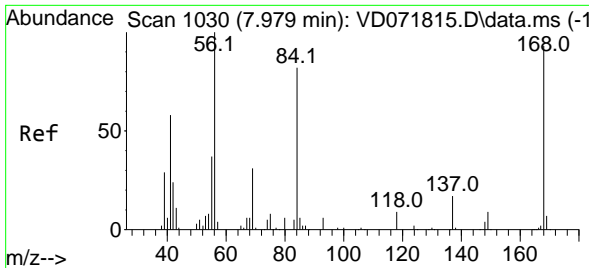
(#) = qualifier out of range (m) = manual integration (+) = signals summed

Data Path : Z:\voasrv\HPCHEM1\MSVOA_D\Data\VD013122\
 Data File : VD071843.D
 Acq On : 31 Jan 2022 14:15
 Operator : VA/SY
 Sample : N1325-16
 Misc : 3.74G/5.00ml/MSVOA_D/SOIL
 ALS Vial : 1 Sample Multiplier: 1

Instrument :
 MSVOA_D
 ClientSampleId :
 TEX-2

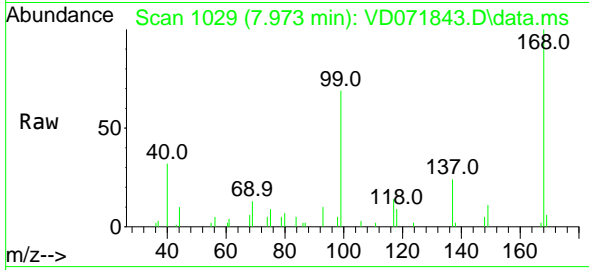
Quant Time: Jan 31 15:41:13 2022
 Quant Method : Z:\voasrv\HPCHEM1\MSVOA_D\Method\82D012622S.M
 Quant Title : SW846 8260
 QLast Update : Thu Jan 27 06:04:38 2022
 Response via : Initial Calibration



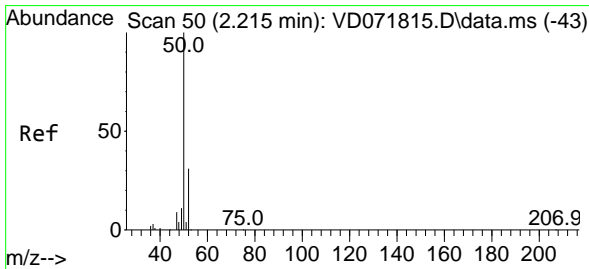
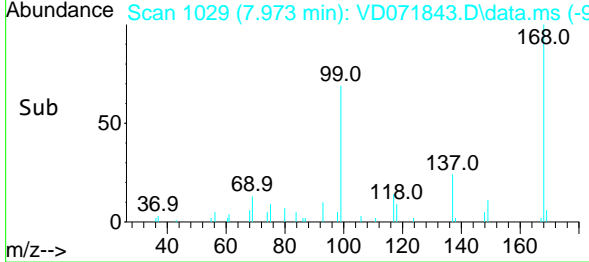
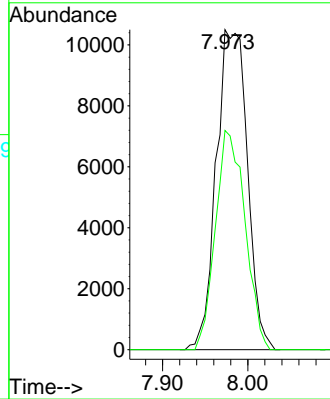


#1
 Pentafluorobenzene
 Concen: 50.000 ug/l
 RT: 7.973 min Scan# 10
 Delta R.T. -0.006 min
 Lab File: VD071843.D
 Acq: 31 Jan 2022 14:15

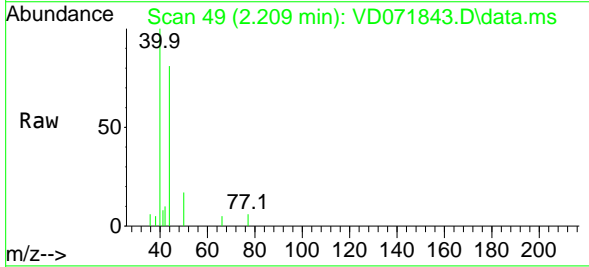
Instrument :
 MSVOA_D
 ClientSampleId :
 TEX-2



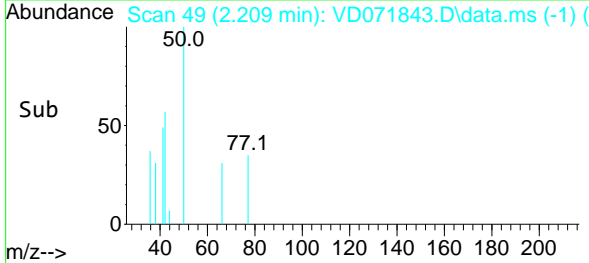
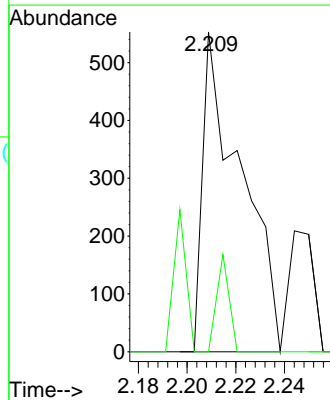
Tgt Ion:168 Resp: 26599
 Ion Ratio Lower Upper
 168 100
 99 68.5 49.8 74.6

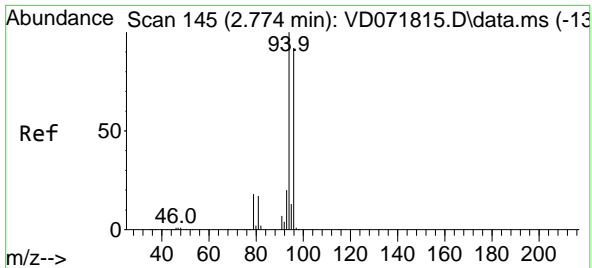


#3
 Chloromethane
 Concen: 1.597 ug/l
 RT: 2.209 min Scan# 49
 Delta R.T. -0.006 min
 Lab File: VD071843.D
 Acq: 31 Jan 2022 14:15



Tgt Ion: 50 Resp: 603
 Ion Ratio Lower Upper
 50 100
 52 0.0 27.4 41.0#

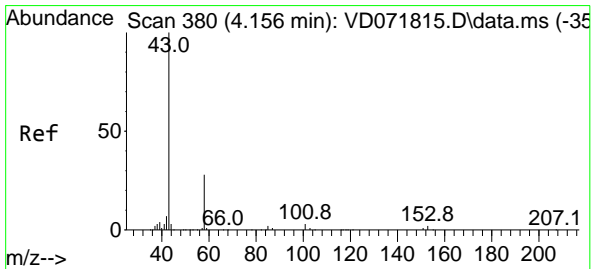
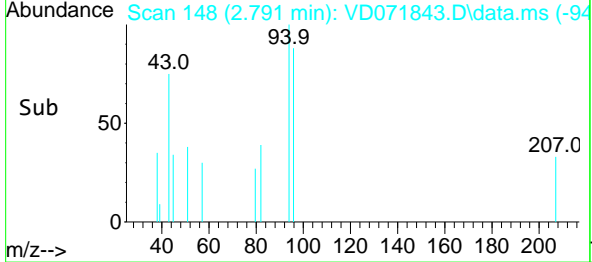
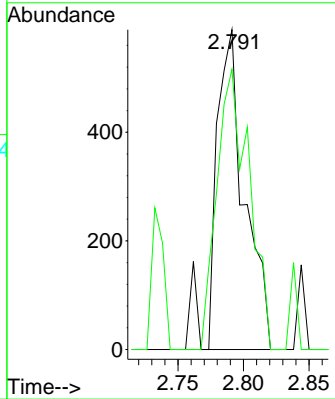
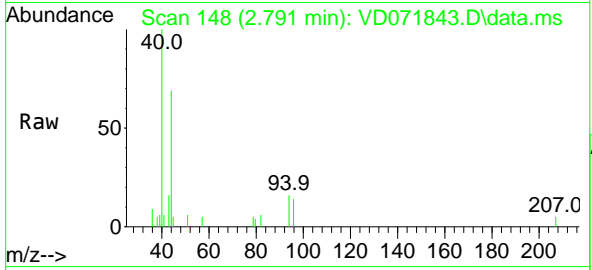




#5
 Bromomethane
 Concen: 3.465 ug/l
 RT: 2.791 min Scan# 14
 Delta R.T. 0.018 min
 Lab File: VD071843.D
 Acq: 31 Jan 2022 14:15

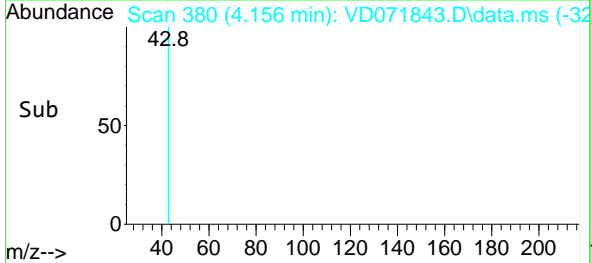
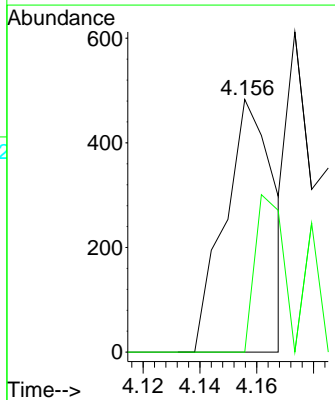
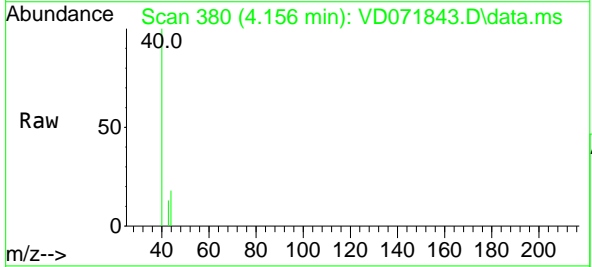
Instrument :
 MSVOA_D
 ClientSampleId :
 TEX-2

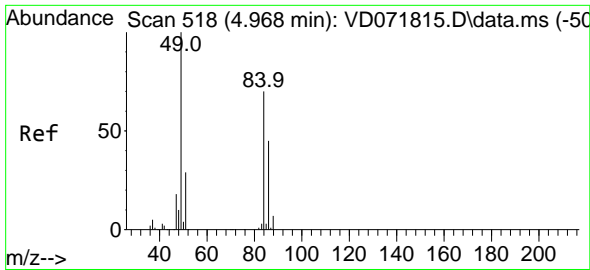
Tgt Ion: 94 Resp: 904
 Ion Ratio Lower Upper
 94 100
 96 87.6 77.6 116.4



#16
 Acetone
 Concen: 6.302 ug/l
 RT: 4.156 min Scan# 380
 Delta R.T. 0.000 min
 Lab File: VD071843.D
 Acq: 31 Jan 2022 14:15

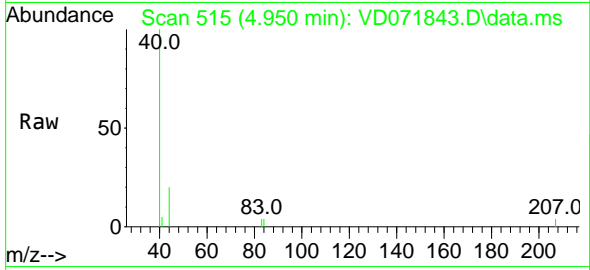
Tgt Ion: 43 Resp: 580
 Ion Ratio Lower Upper
 43 100
 58 0.0 22.1 33.1#





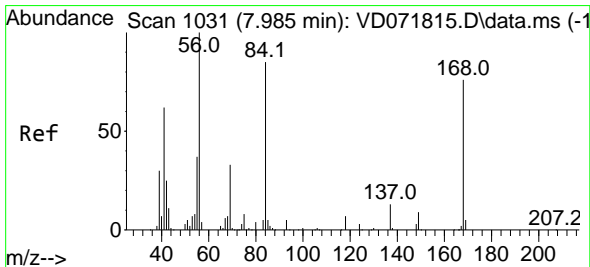
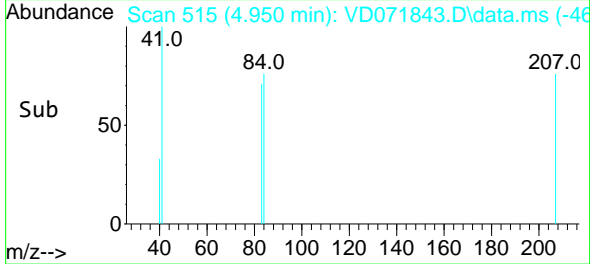
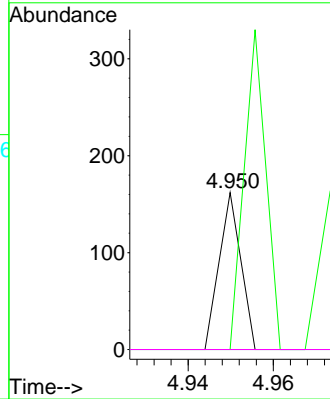
#20
 Methylene Chloride
 Concen: Below Cal
 RT: 4.950 min Scan# 51
 Delta R.T. -0.018 min
 Lab File: VD071843.D
 Acq: 31 Jan 2022 14:15

Instrument :
 MSVOA_D
 ClientSampleId :
 TEX-2



Tgt Ion: 84 Resp: 57

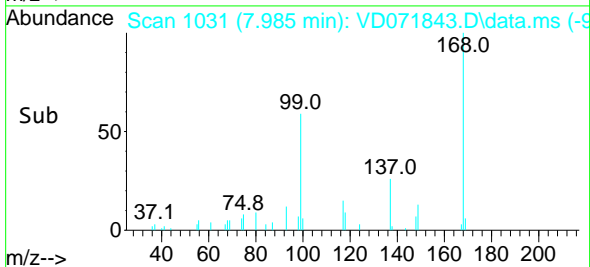
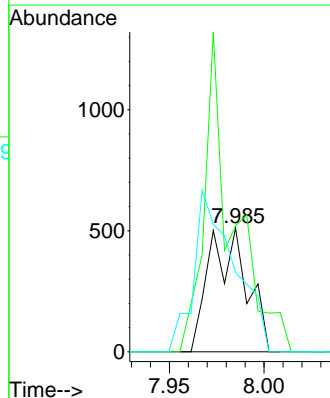
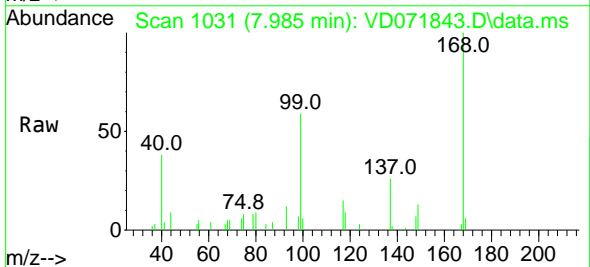
Ion	Ratio	Lower	Upper
84	100		
49	0.0	112.8	169.2#
51	0.0	32.6	48.8#
86	0.0	47.9	71.9#

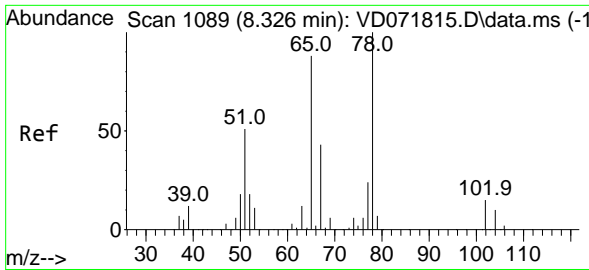


#31
 Cyclohexane
 Concen: 1.095 ug/l
 RT: 7.985 min Scan# 1031
 Delta R.T. 0.000 min
 Lab File: VD071843.D
 Acq: 31 Jan 2022 14:15

Tgt Ion: 56 Resp: 703

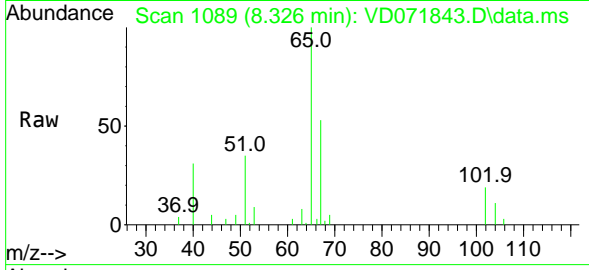
Ion	Ratio	Lower	Upper
56	100		
69	102.0	25.4	38.2#
84	64.0	63.0	94.4



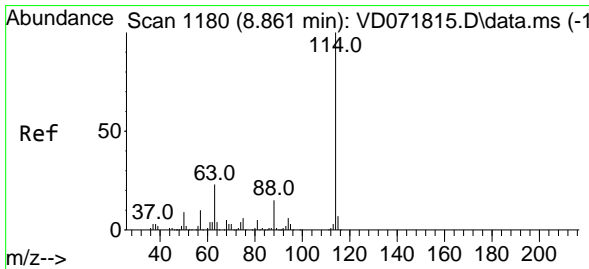
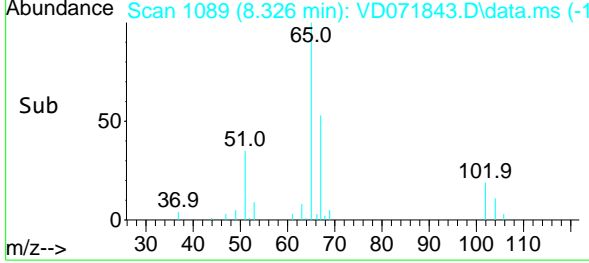
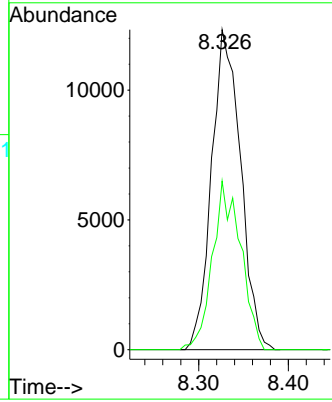


#33
 1,2-Dichloroethane-d4
 Concen: 82.371 ug/l
 RT: 8.326 min Scan# 1089
 Delta R.T. 0.000 min
 Lab File: VD071843.D
 Acq: 31 Jan 2022 14:15

Instrument : MSVOA_D
 ClientSampleId : TEX-2

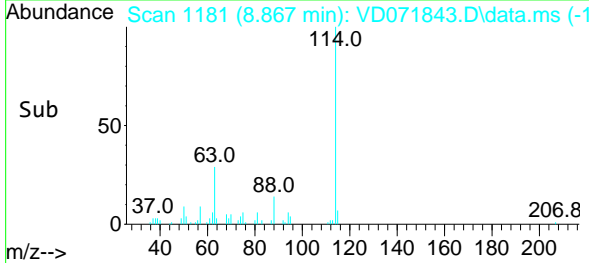
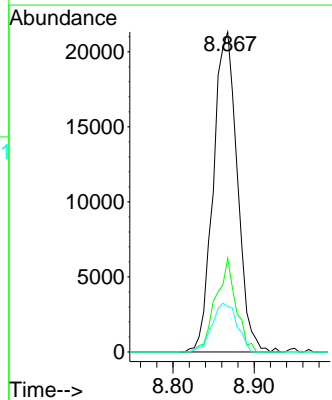
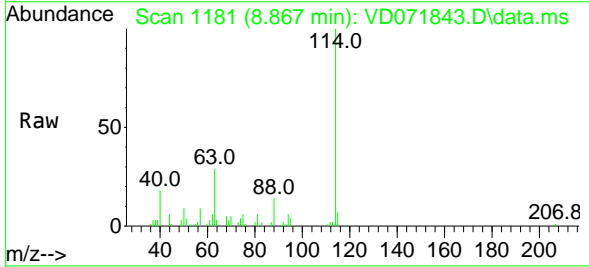


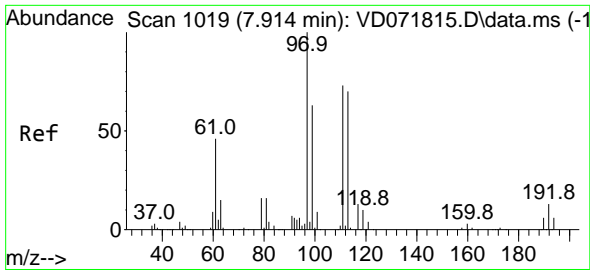
Tgt Ion: 65 Resp: 27693
 Ion Ratio Lower Upper
 65 100
 67 51.3 0.0 101.4



#34
 1,4-Difluorobenzene
 Concen: 50.000 ug/l
 RT: 8.867 min Scan# 1181
 Delta R.T. 0.006 min
 Lab File: VD071843.D
 Acq: 31 Jan 2022 14:15

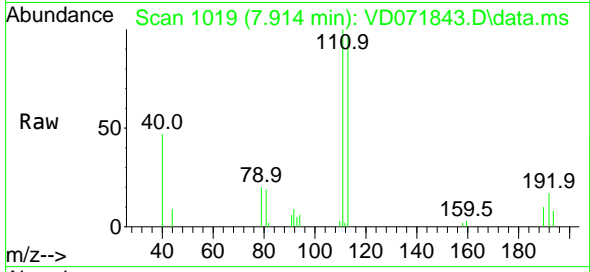
Tgt Ion: 114 Resp: 43814
 Ion Ratio Lower Upper
 114 100
 63 29.2 0.0 46.6
 88 14.3 0.0 33.2





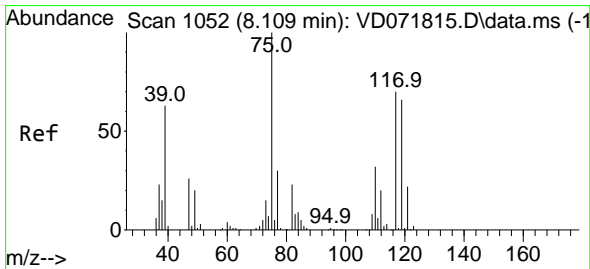
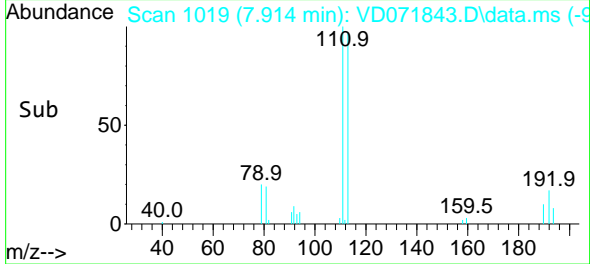
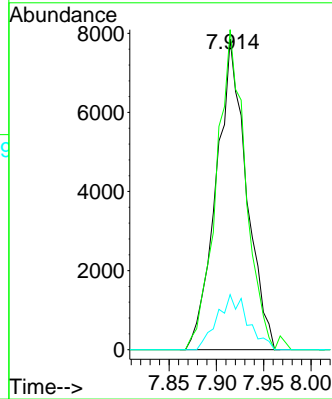
#35
 Dibromofluoromethane
 Concen: 60.677 ug/l
 RT: 7.914 min Scan# 1019
 Delta R.T. 0.000 min
 Lab File: VD071843.D
 Acq: 31 Jan 2022 14:15

Instrument : MSVOA_D
 ClientSampleId : TEX-2



Tgt Ion: 113 Resp: 17475

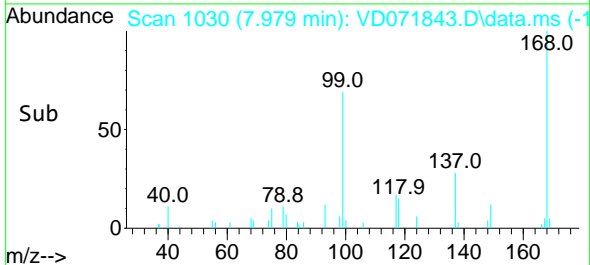
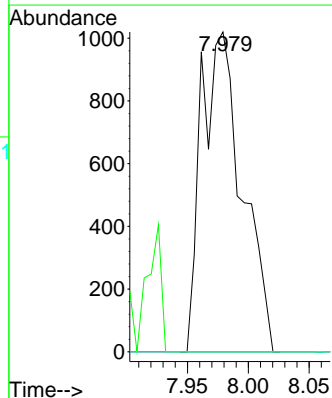
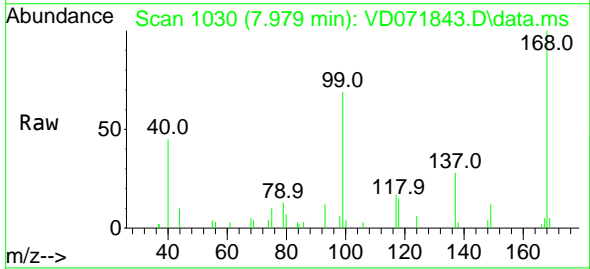
Ion	Ratio	Lower	Upper
113	100		
111	99.0	83.8	125.6
192	17.8	14.6	21.8

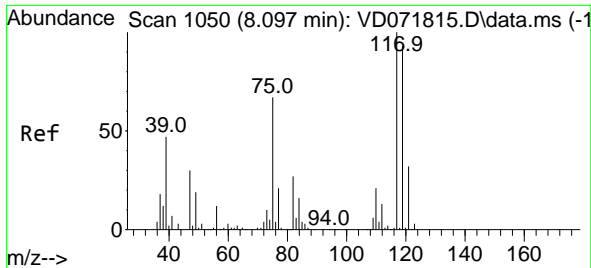


#36
 1,1-Dichloropropene
 Concen: 4.807 ug/l
 RT: 7.979 min Scan# 1030
 Delta R.T. -0.135 min
 Lab File: VD071843.D
 Acq: 31 Jan 2022 14:15

Tgt Ion: 75 Resp: 2376

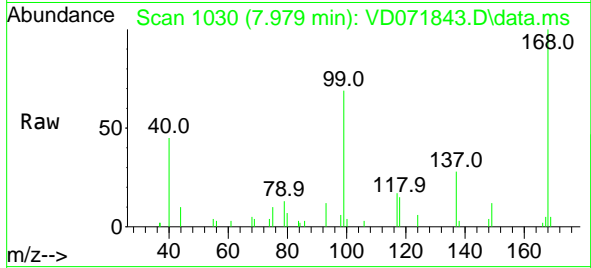
Ion	Ratio	Lower	Upper
75	100		
110	0.0	16.4	49.1#
77	0.0	24.2	36.2#



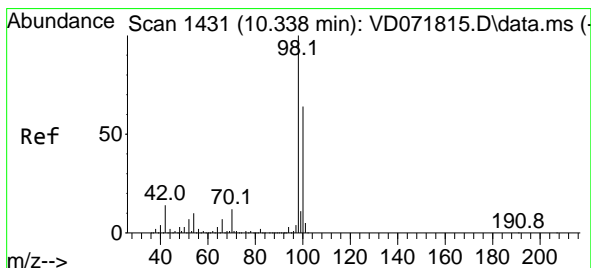
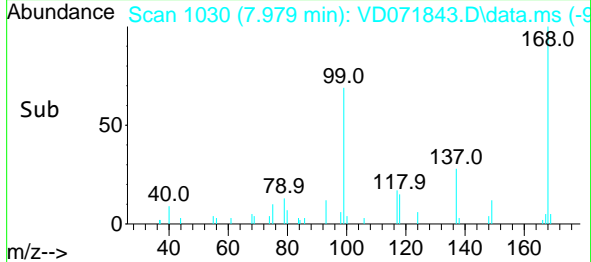
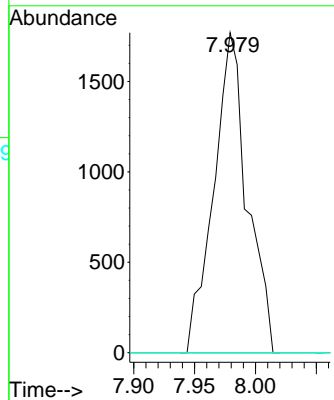


#38
 Carbon Tetrachloride
 Concen: 6.943 ug/l
 RT: 7.979 min Scan# 1050
 Delta R.T. -0.118 min
 Lab File: VD071843.D
 Acq: 31 Jan 2022 14:15

Instrument : MSVOA_D
 ClientSampleId : TEX-2

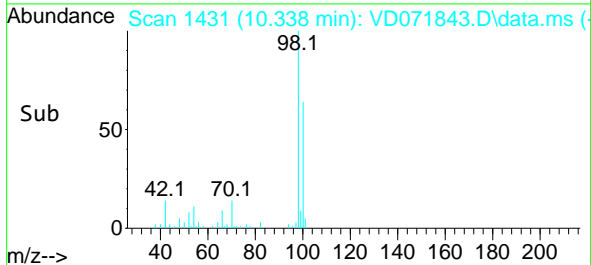
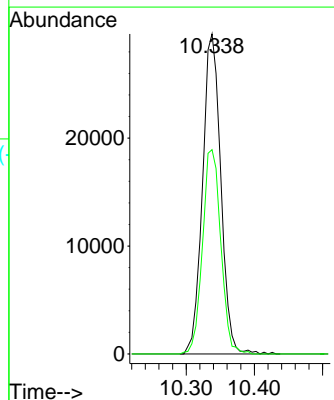
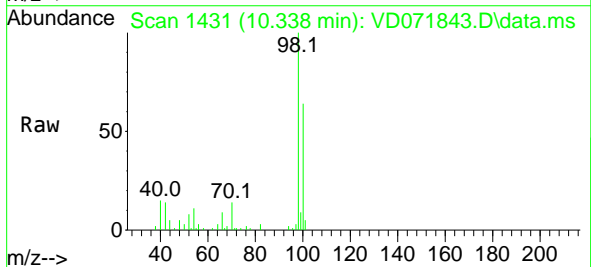


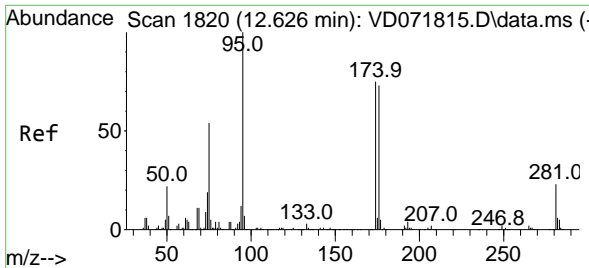
Tgt Ion:117 Resp: 3394
 Ion Ratio Lower Upper
 117 100
 119 0.0 75.8 113.6#
 121 0.0 24.5 36.7#



#50
 Toluene-d8
 Concen: 51.295 ug/l
 RT: 10.338 min Scan# 1431
 Delta R.T. 0.000 min
 Lab File: VD071843.D
 Acq: 31 Jan 2022 14:15

Tgt Ion: 98 Resp: 55172
 Ion Ratio Lower Upper
 98 100
 100 63.9 52.4 78.6

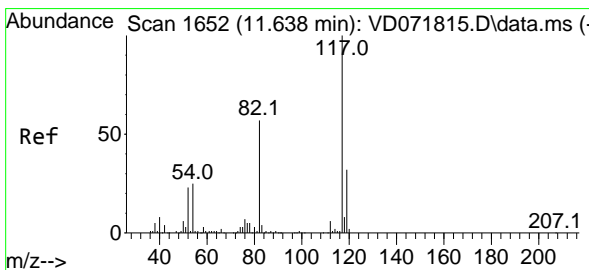
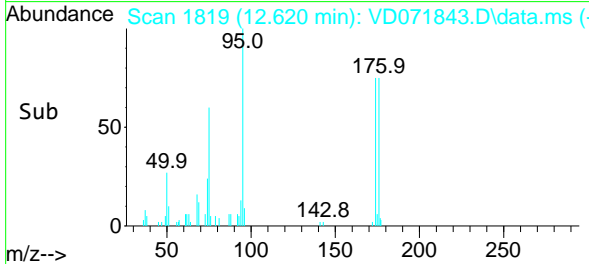
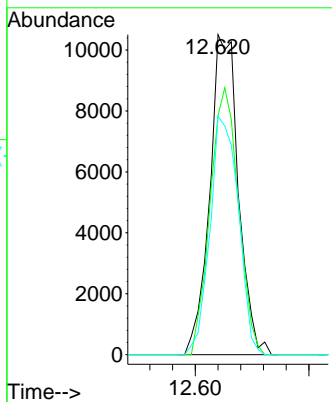
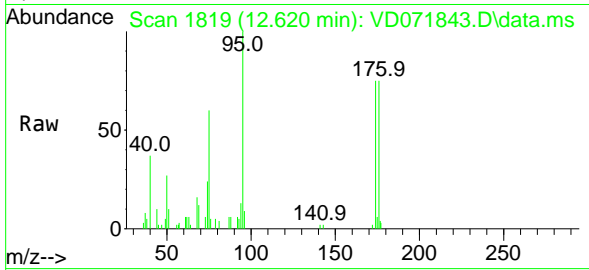




#62
 4-Bromofluorobenzene
 Concen: 48.806 ug/l
 RT: 12.620 min Scan# 1819
 Delta R.T. -0.006 min
 Lab File: VD071843.D
 Acq: 31 Jan 2022 14:15

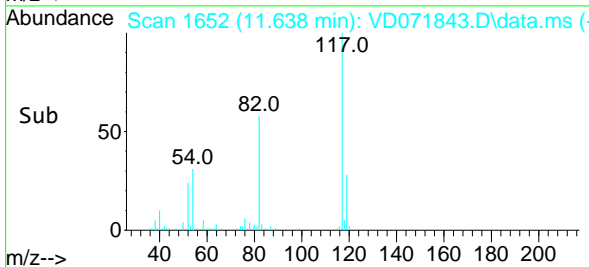
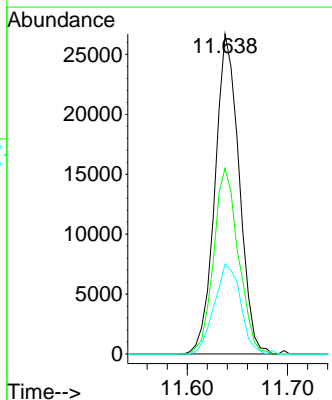
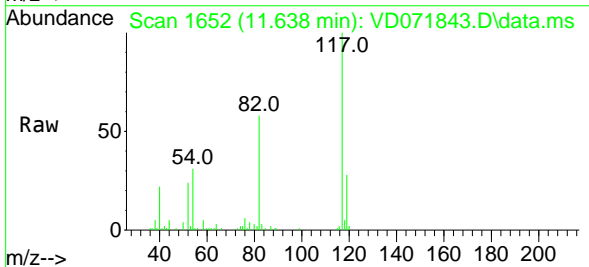
Instrument : MSVOA_D
 ClientSampleId : TEX-2

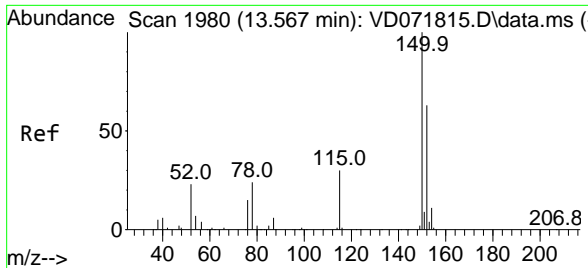
Tgt Ion	Resp	Lower	Upper
95	18332		
174	82.5	0.0	152.8
176	74.0	0.0	145.4



#63
 Chlorobenzene-d5
 Concen: 50.000 ug/l
 RT: 11.638 min Scan# 1652
 Delta R.T. 0.000 min
 Lab File: VD071843.D
 Acq: 31 Jan 2022 14:15

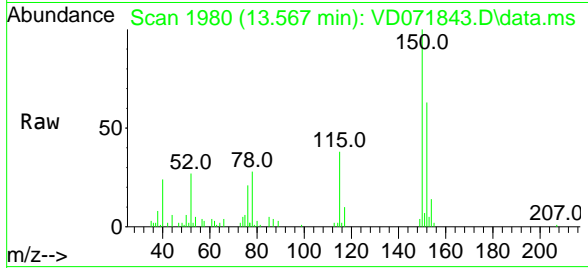
Tgt Ion	Resp	Lower	Upper
117	44628		
82	58.0	45.3	67.9
119	28.1	26.6	40.0



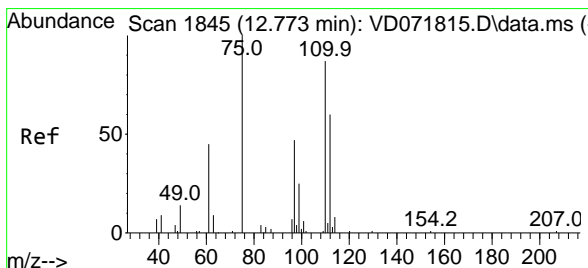
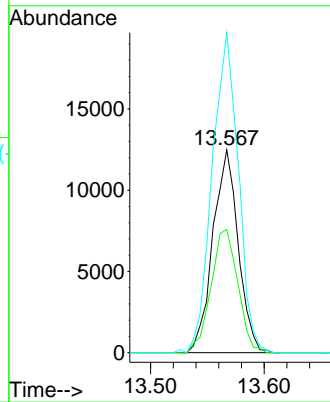
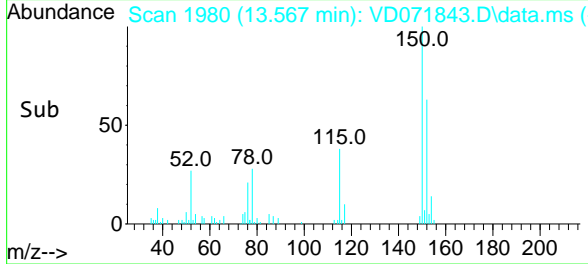


#72
 1,4-Dichlorobenzene-d4
 Concen: 50.000 ug/l
 RT: 13.567 min Scan# 1980
 Delta R.T. 0.000 min
 Lab File: VD071843.D
 Acq: 31 Jan 2022 14:15

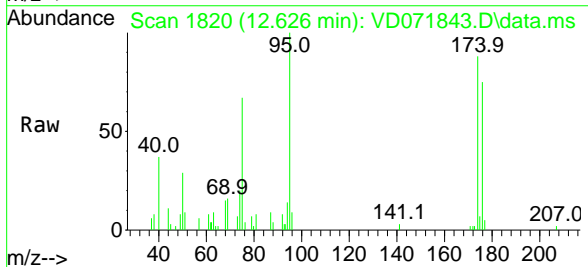
Instrument : MSVOA_D
 ClientSampleId : TEX-2



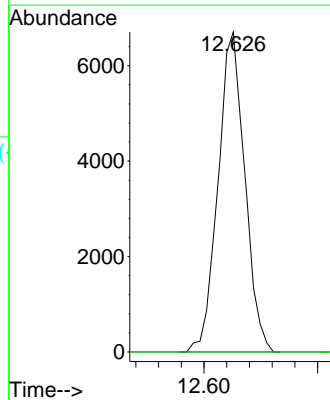
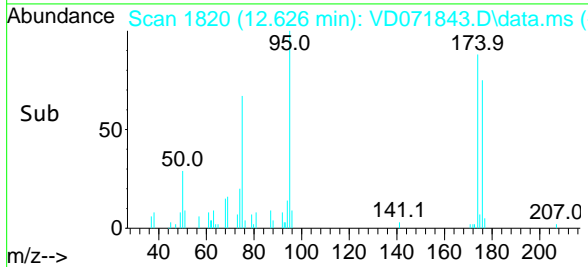
Tgt Ion:152 Resp: 19402
 Ion Ratio Lower Upper
 152 100
 115 64.1 31.3 93.8
 150 162.5 0.0 348.6

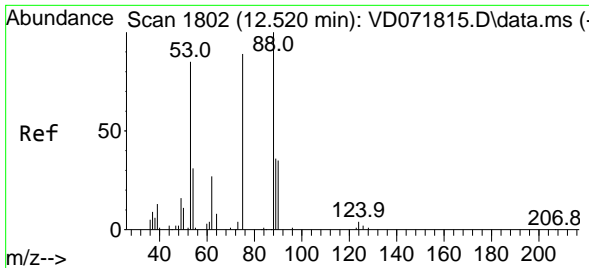


#76
 1,2,3-Trichloropropane
 Concen: 53.606 ug/l
 RT: 12.626 min Scan# 1820
 Delta R.T. -0.147 min
 Lab File: VD071843.D
 Acq: 31 Jan 2022 14:15



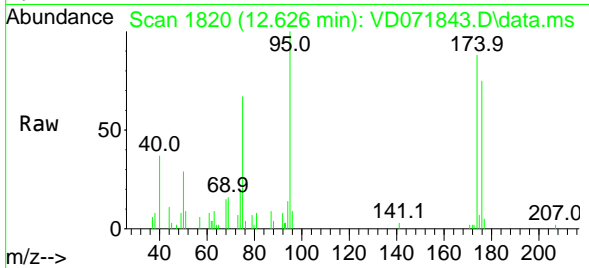
Tgt Ion: 75 Resp: 10961
 Ion Ratio Lower Upper
 75 100
 77 0.0 0.0 0.0





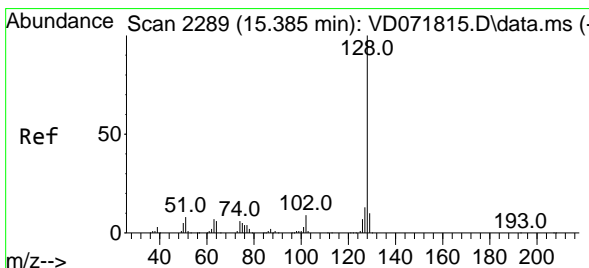
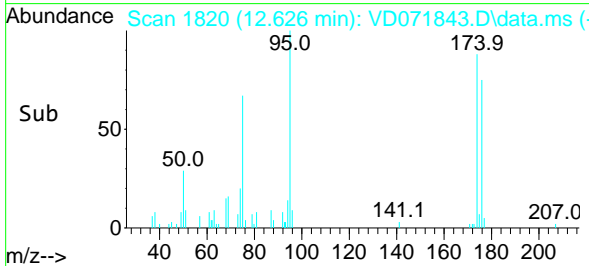
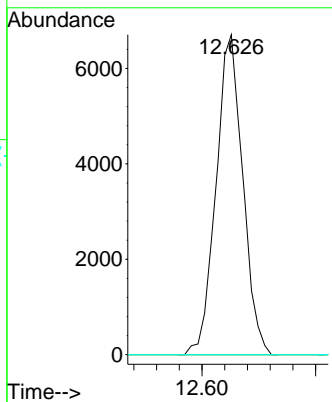
#81
 trans-1,4-Dichloro-2-butene
 Concen: 131.805 ug/l
 RT: 12.626 min Scan# 1802
 Delta R.T. 0.106 min
 Lab File: VD071843.D
 Acq: 31 Jan 2022 14:15

Instrument : MSVOA_D
 ClientSampleId : TEX-2

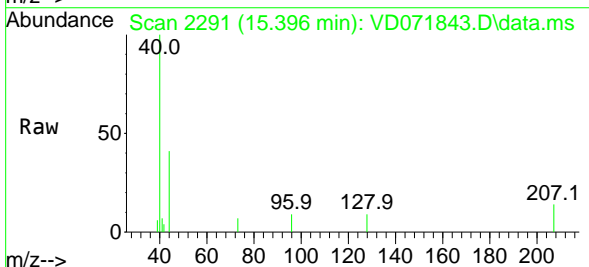


Tgt Ion: 75 Resp: 10961

Ion	Ratio	Lower	Upper
75	100		
53	0.0	86.5	129.7#
89	0.0	33.9	50.9#



#95
 Naphthalene
 Concen: 2.066 ug/l
 RT: 15.396 min Scan# 2291
 Delta R.T. 0.012 min
 Lab File: VD071843.D
 Acq: 31 Jan 2022 14:15



Tgt Ion: 128 Resp: 425

Ion	Ratio	Lower	Upper
128	100		
127	0.0	10.3	15.5#
129	0.0	8.4	12.6#

