

Data Path : Z:\VOASRV\HPCHEM1\MSVOA D\DATA\VD020119\
 Data File : VD060820.D
 Acq On : 1 Feb 2019 15:39
 Operator : VA/AP
 Sample : K1297-01RE
 Misc : 4.33µ/5ml/MSVOA D/SOIL
 ALS Vial : 10 Sample Multiplier: 1

Instrument :
 MSVOA_D
 ClientSampleId :
 A0C17-SSIRE

Quant Time: Feb 02 00:24:13 2019
 Quant Method : Z:\VOASRV\HPCHEM1\MSVOA_D\METHOD\82D012819S.M
 Quant Title : SW846 8260
 QLast Update : Tue Jan 29 13:53:55 2019
 Response via : Initial Calibration

Internal Standards	R.T.	QIon	Response	Conc	Units	Dev(Min)
1) Pentafluorobenzene	6.76	168	116244	50.00	µg/l	-0.03
34) 1,4-Difluorobenzene	7.95	114	158677	50.00	µg/l	-0.02
63) Chlorobenzene-d5	12.14	117	132160	50.00	µg/l	-0.02
72) 1,4-Dichlorobenzene-d4	14.31	152	61432	50.00	µg/l	0.00

System Monitoring Compounds

33) 1,2-Dichloroethane-d4	7.19	65	119295	66.94	µg/l	-0.03
Spiked Amount				50.000		
			Recovery	=		133.88%
35) Dibromofluoromethane	6.64	113	71867	47.23	µg/l	-0.03
Spiked Amount				50.000		
			Recovery	=		94.46%
50) Toluene-d8	10.16	98	122973	34.60	µg/l	-0.03
Spiked Amount				50.000		
			Recovery	=		69.20%
62) 4-Bromofluorobenzene	13.34	95	64901	36.34	µg/l	-0.02
Spiked Amount				50.000		
			Recovery	=		72.68%

Target Compounds

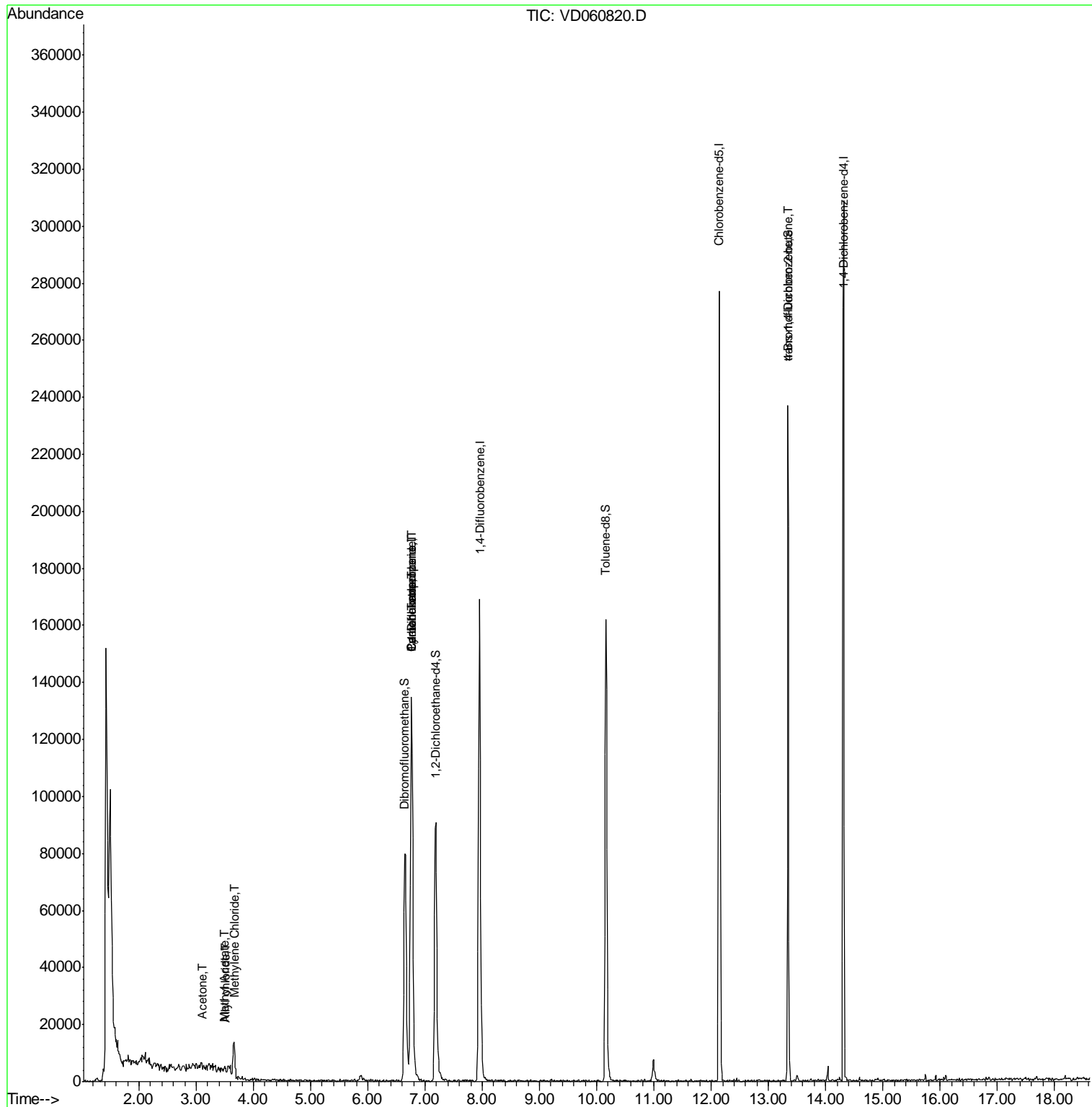
						Qvalue
13) Acrolein	2.83	56	208	Below Cal	#	9
14) Allyl chloride	3.51	41	2001	1.404	µg/l #	67
16) Acetone	3.10	43	5249	20.393	µg/l #	59
18) Methyl Acetate	3.50	43	2376	4.656	µg/l #	63
20) Methylene Chloride	3.66	84	6394	1.084	µg/l #	72
31) Cyclohexane	6.76	56	3183	1.946	µg/l #	1
36) 1,1-Dichloropropene	6.75	75	10364	5.470	µg/l #	47
38) Carbon Tetrachloride	6.76	117	13444	5.659	µg/l #	13
81) trans-1,4-Dichloro-2-buten	13.34	75	35961	122.444	µg/l #	1

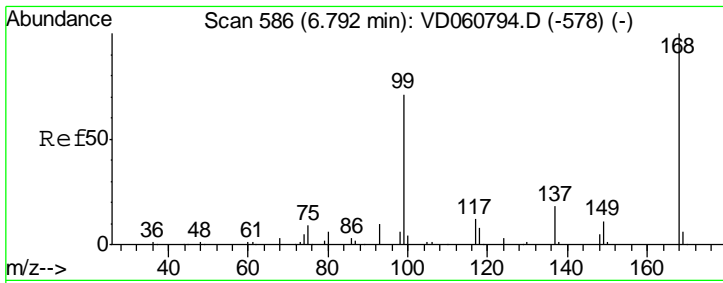
(#) = qualifier out of range (m) = manual integration (+) = signals summed

Data Path : Z:\VOASRV\HPCHEM1\MSVOA D\DATA\VD020119\
 Data File : VD060820.D
 Acq On : 1 Feb 2019 15:39
 Operator : VA/AP
 Sample : K1297-01RE
 Misc : 4.33µ/5ml/MSVOA D/SOIL
 ALS Vial : 10 Sample Multiplier: 1

Instrument :
 MSVOA_D
 ClientSampled :
 A0C17-SSIRE

Quant Time: Feb 02 00:24:13 2019
 Quant Method : Z:\VOASRV\HPCHEM1\MSVOA_D\METHOD\82D012819S.M
 Quant Title : SW846 8260
 QLast Update : Tue Jan 29 13:53:55 2019
 Response via : Initial Calibration

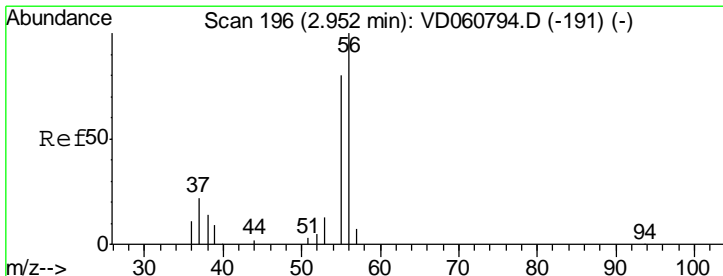
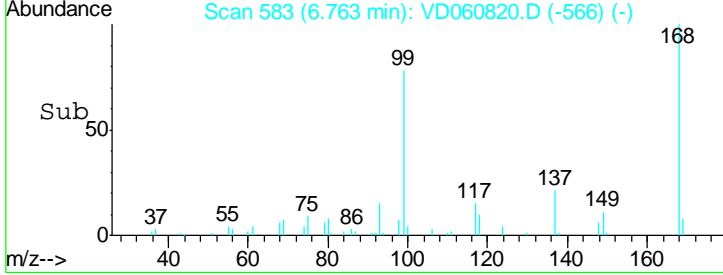
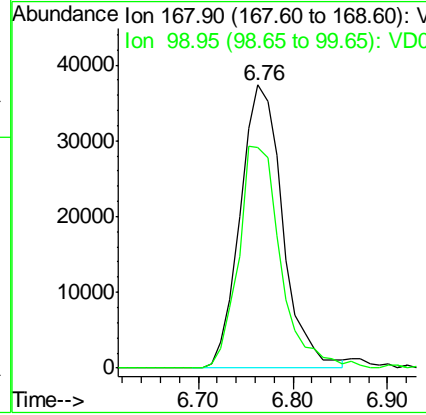
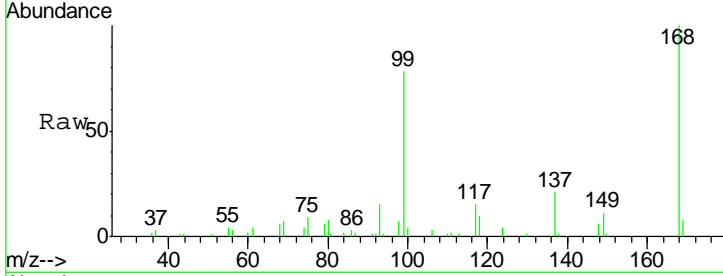




#1
 Pentafluorobenzene
 Concen: 50.000 ug/l
 RT: 6.76 min Scan# 583
 Delta R.T. -0.03 min
 Lab File: VD060820.D
 Acq: 1 Feb 2019 15:39

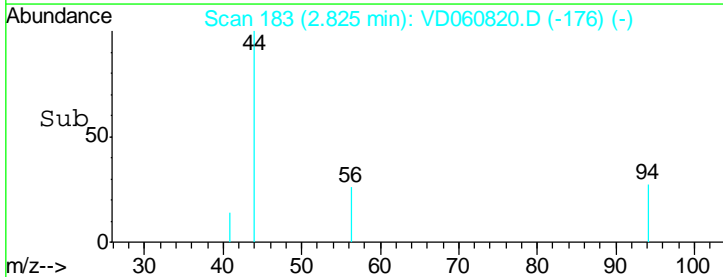
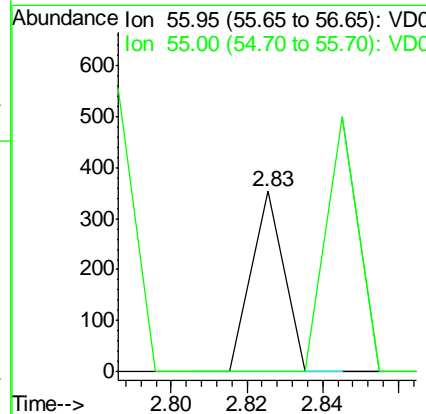
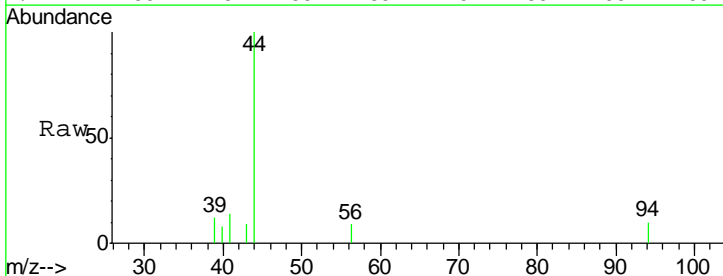
Instrument : MSVOA_D
 ClientSampled : A0C17-SSIRE

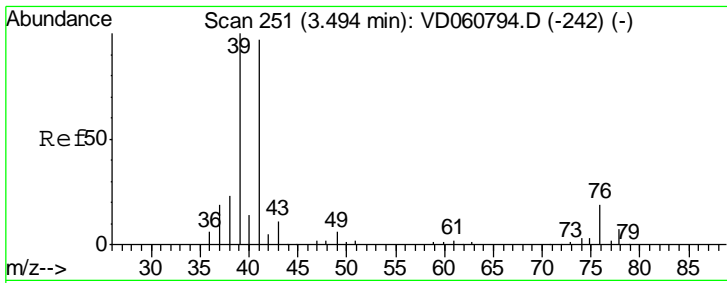
Tot Ion:168 Resp: 116244
 Ion Ratio Lower Upper
 168 100
 99 77.9 59.2 88.8



#13
 Acrolein
 Concen: Below Cal
 RT: 2.83 min Scan# 183
 Delta R.T. -0.13 min
 Lab File: VD060820.D
 Acq: 1 Feb 2019 15:39

Tgt Ion: 56 Resp: 208
 Ion Ratio Lower Upper
 56 100
 55 0.0 64.2 96.2#

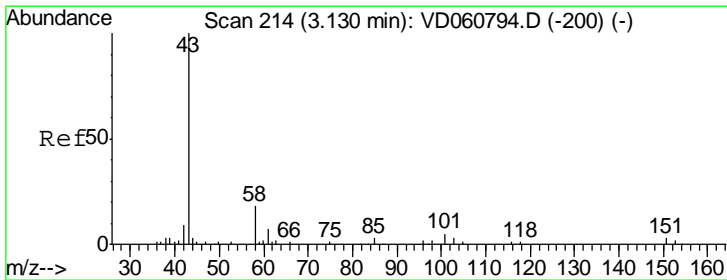
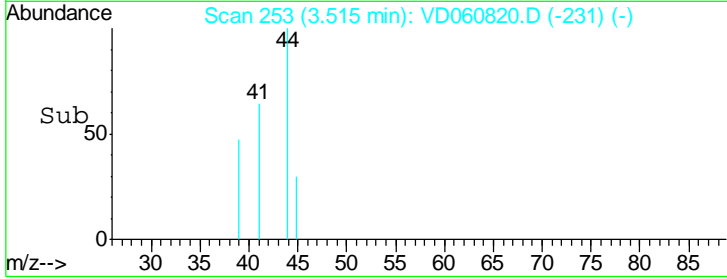
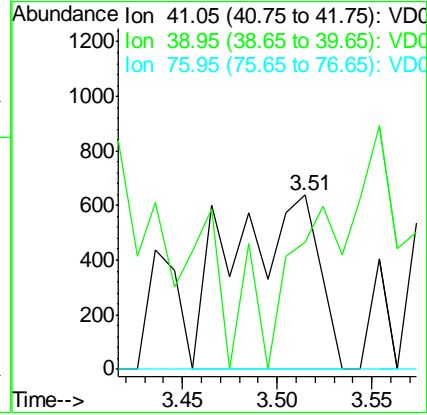
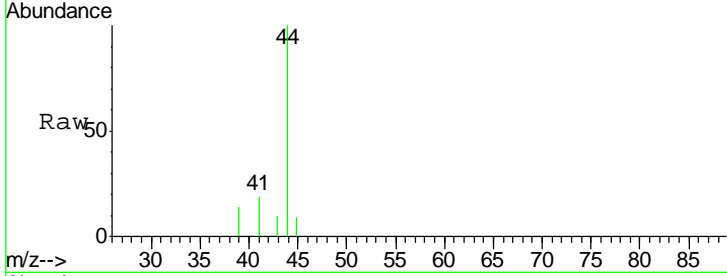




#14
 Allyl chloride
 Concen: 1.404 ug/l
 RT: 3.51 min Scan# 253
 Delta R.T. 0.02 min
 Lab File: VD060820.D
 Acq: 1 Feb 2019 15:39

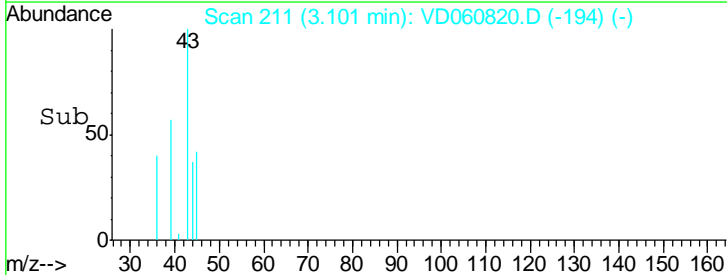
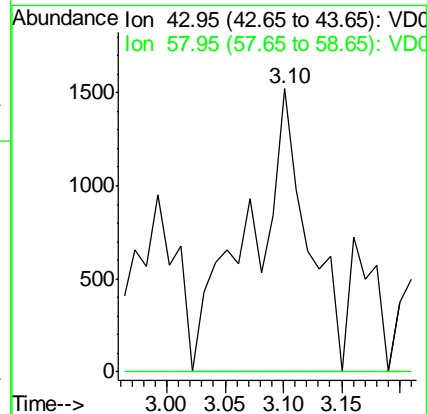
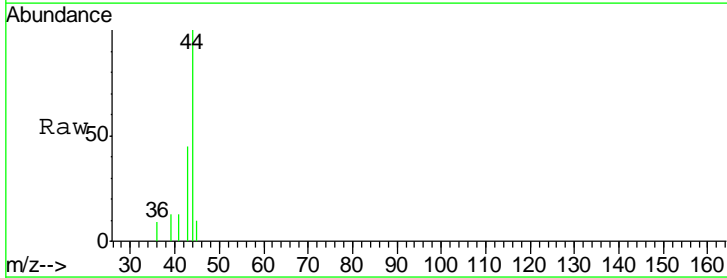
Instrument :
 MSVOA_D
 ClientSampleId :
 A0C17-SSIRE

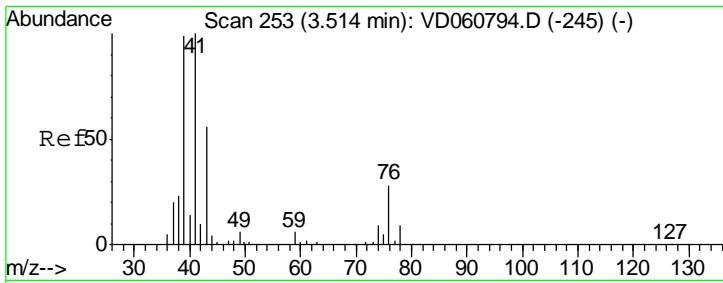
Tgt Ion	Ratio	Lower	Upper
41	100		
39	73.2	82.6	123.8#
76	0.0	18.9	28.3#



#16
 Acetone
 Concen: 20.393 ug/l
 RT: 3.10 min Scan# 211
 Delta R.T. -0.03 min
 Lab File: VD060820.D
 Acq: 1 Feb 2019 15:39

Tgt Ion	Ratio	Lower	Upper
43	100		
58	0.0	14.5	21.7#

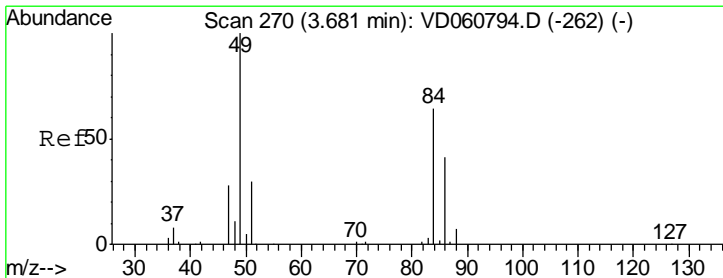
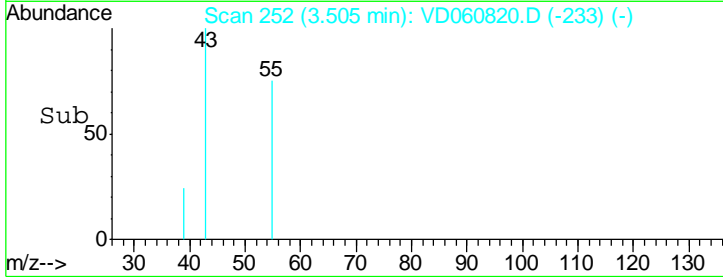
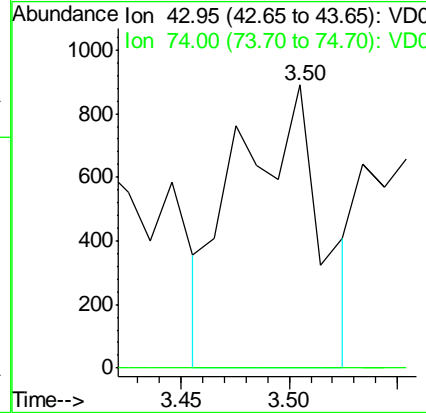
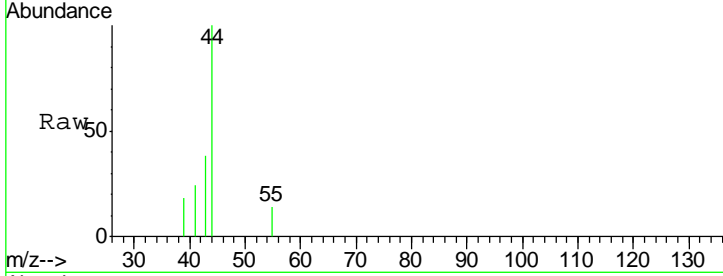




#18
 Methyl Acetate
 Concen: 4.656 ug/l
 RT: 3.50 min Scan# 252
 Delta R.T. -0.01 min
 Lab File: VD060820.D
 Acq: 1 Feb 2019 15:39

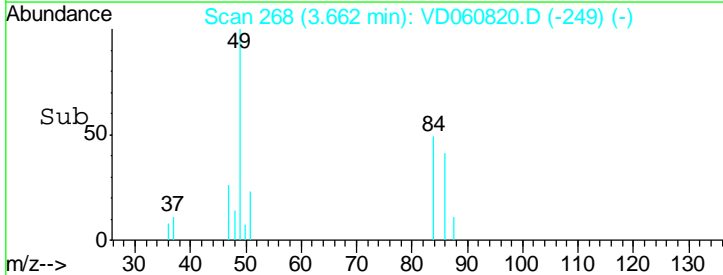
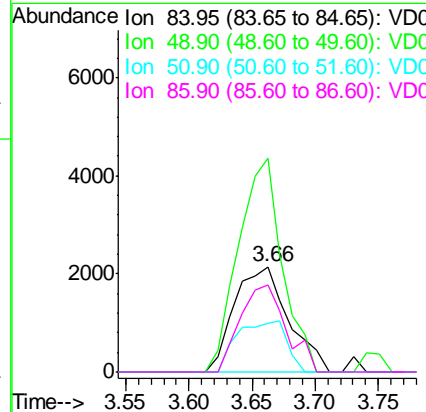
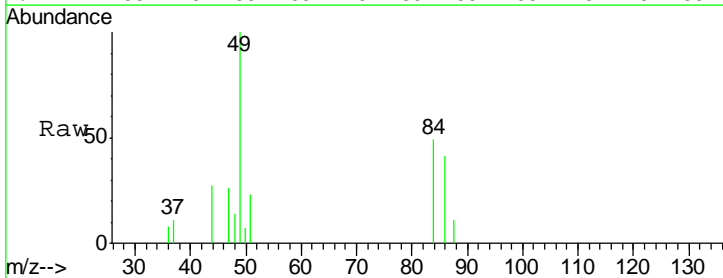
Instrument :
 MSVOA_D
 ClientSampleId :
 A0C17-SSIRE

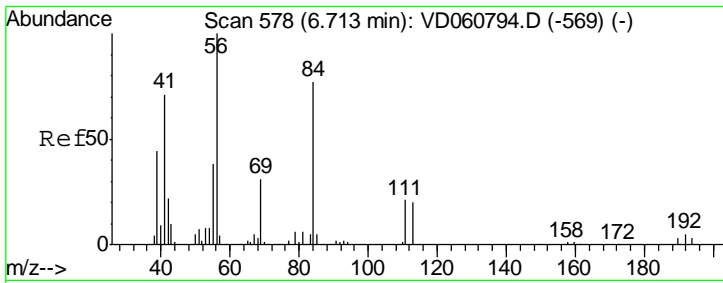
Tgt Ion: 43 Resp: 2376
 Ion Ratio Lower Upper
 43 100
 74 0.0 12.5 18.7#



#20
 Methylene Chloride
 Concen: 1.084 ug/l
 RT: 3.66 min Scan# 268
 Delta R.T. -0.02 min
 Lab File: VD060820.D
 Acq: 1 Feb 2019 15:39

Tgt Ion: 84 Resp: 6394
 Ion Ratio Lower Upper
 84 100
 49 203.0 124.2 186.2#
 51 46.8 38.1 57.1
 86 82.7 50.6 76.0#

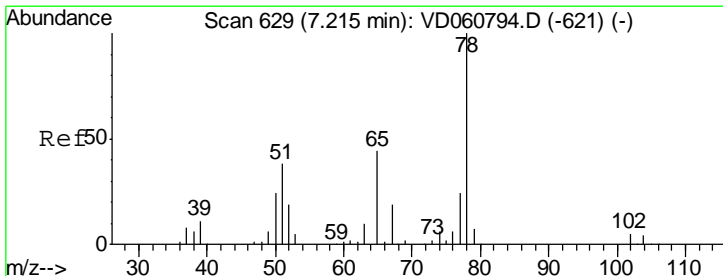
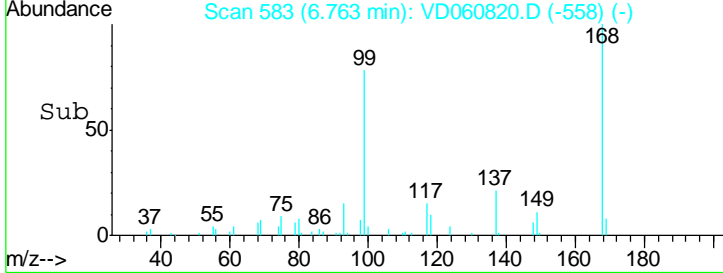
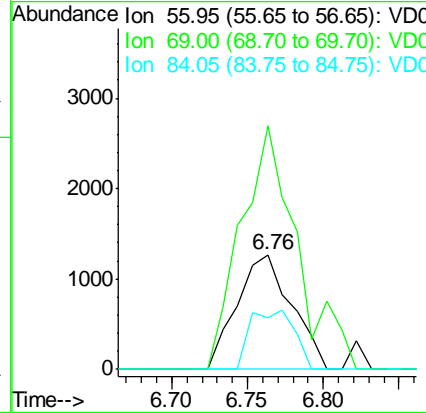
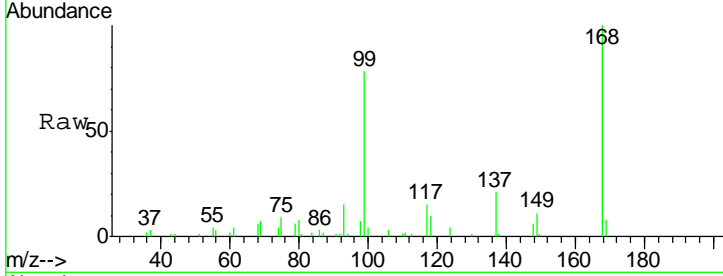




#31
 Cyclohexane
 Concen: 1.946 ug/l
 RT: 6.76 min Scan# 583
 Delta R.T. 0.05 min
 Lab File: VD060820.D
 Acq: 1 Feb 2019 15:39

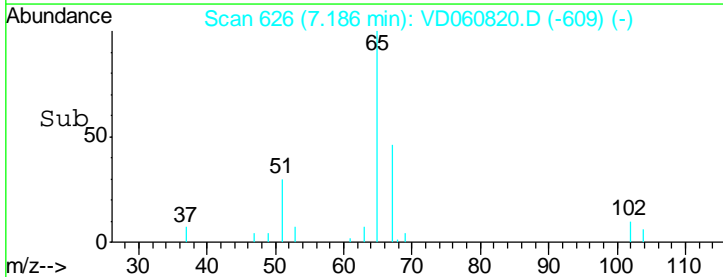
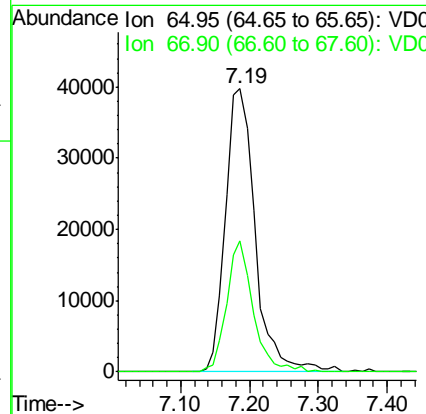
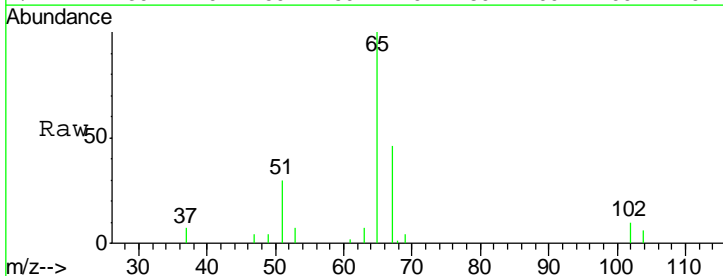
Instrument :
 MSVOA_D
 ClientSampleId :
 A0C17-SSIRE

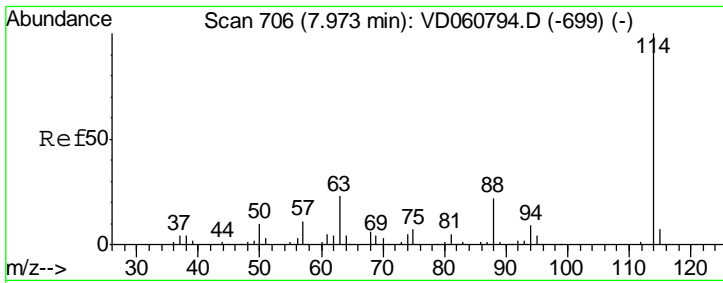
Tgt Ion	Resp	Lower	Upper
56	100		
69	212.1	25.1	37.7#
84	45.1	63.9	95.9#



#33
 1,2-Dichloroethane-d4
 Concen: N.D. ug/l
 RT: 7.19 min Scan# 626
 Delta R.T. -0.03 min
 Lab File: VD060820.D
 Acq: 1 Feb 2019 15:39

Tgt Ion	Resp	Lower	Upper
65	100		
67	46.4	0.0	85.8

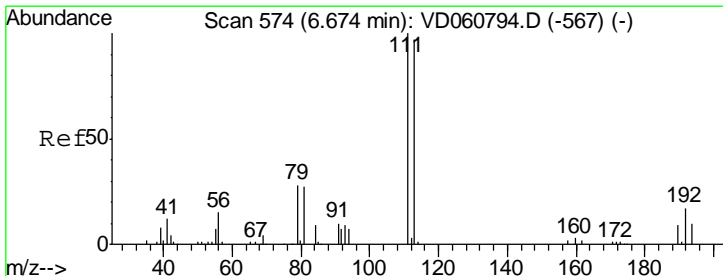
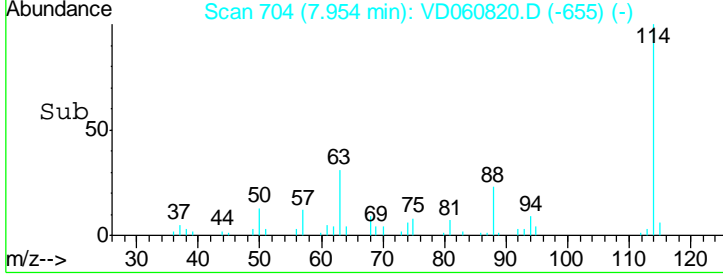
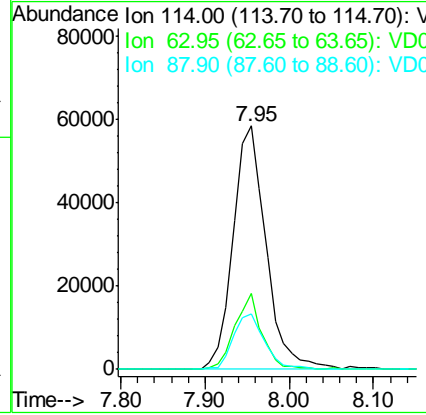
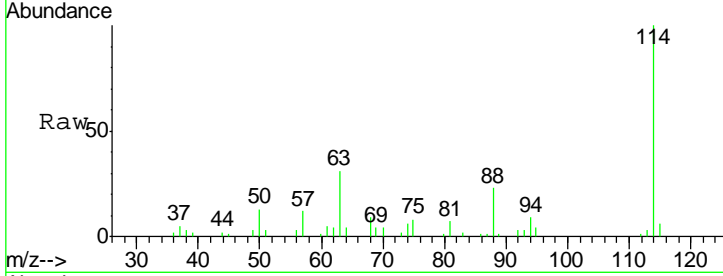




#34
 1,4-Difluorobenzene
 Concen: 50.000 ug/l
 RT: 7.95 min Scan# 704
 Delta R.T. -0.02 min
 Lab File: VD060820.D
 Acq: 1 Feb 2019 15:39

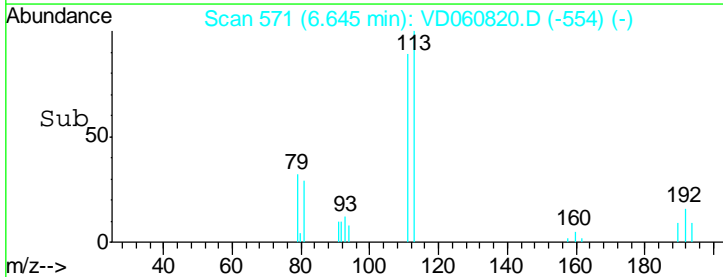
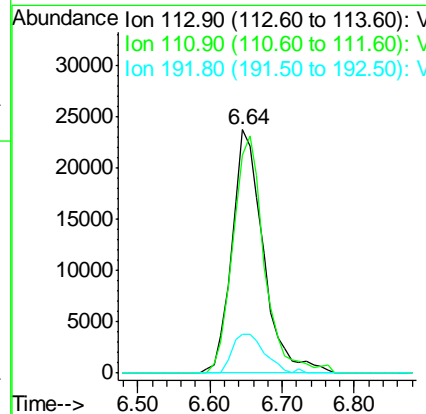
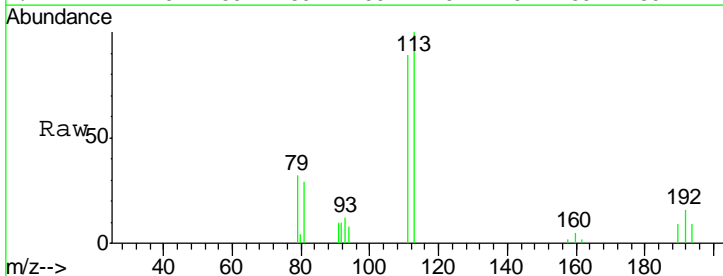
Instrument :
 MSVOA_D
 ClientSampled :
 A0C17-SSIRE

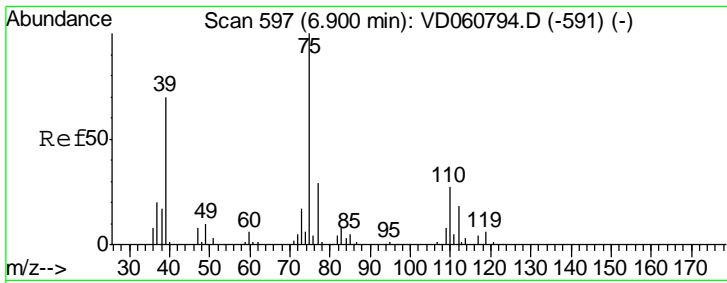
Tgt Ion	Resp	Lower	Upper
114	158677		
63	31.1	0.0	46.6
88	22.5	0.0	44.0



#35
 Dibromofluoromethane
 Concen: 50.000 ug/l
 RT: 6.64 min Scan# 571
 Delta R.T. -0.03 min
 Lab File: VD060820.D
 Acq: 1 Feb 2019 15:39

Tgt Ion	Resp	Lower	Upper
113	71867		
111	89.4	82.3	123.5
192	15.9	14.4	21.6

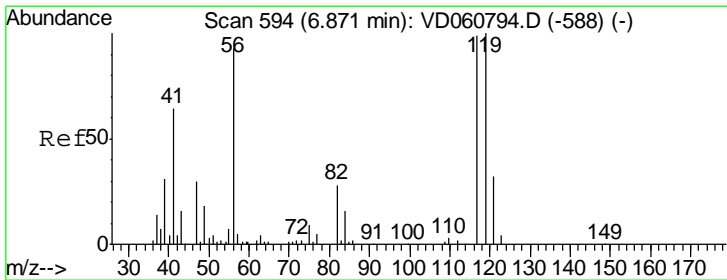
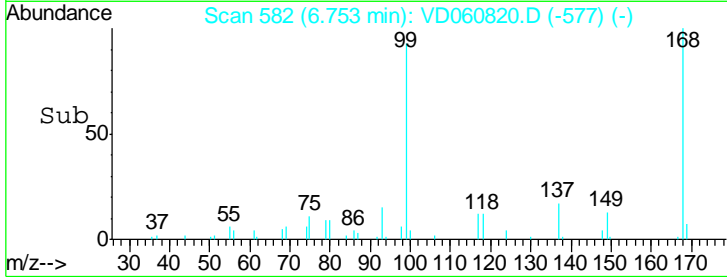
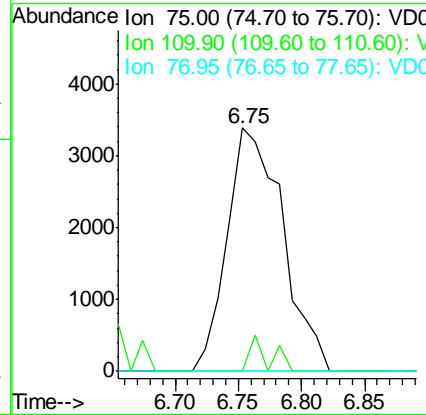
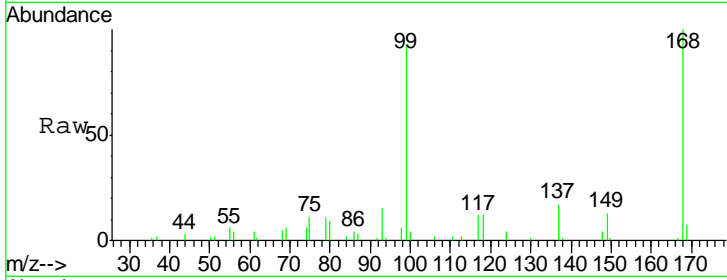




#36
 1,1-Dichloropropene
 Concen: 5.470 ug/l
 RT: 6.75 min Scan# 582
 Delta R.T. -0.15 min
 Lab File: VD060820.D
 Acq: 1 Feb 2019 15:39

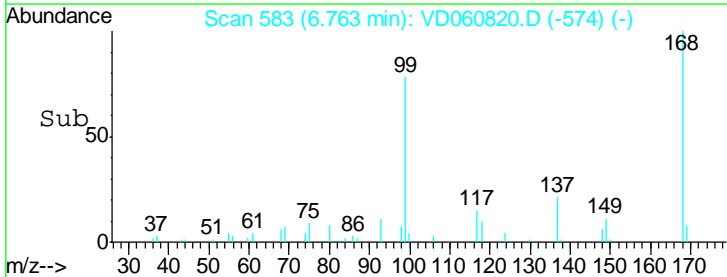
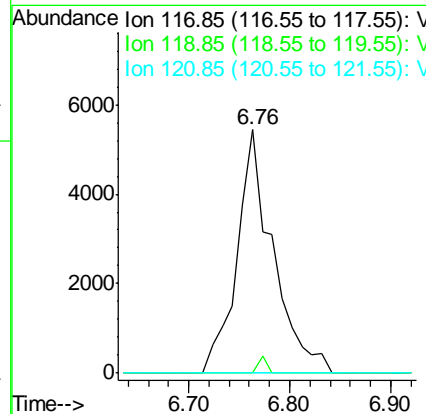
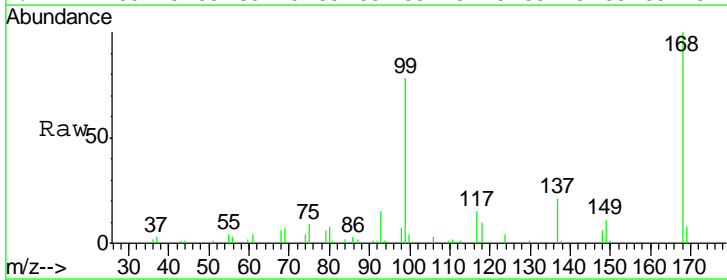
Instrument : MSVOA_D
 ClientSampled : A0C17-SSIRE

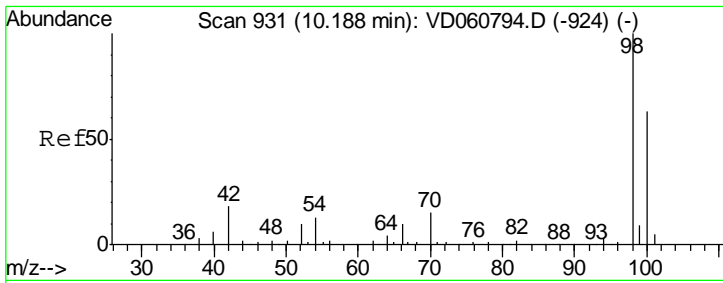
Tgt Ion	Resp	Lower	Upper
75	10364		
110	0.0	13.5	40.4#
77	0.0	23.4	35.2#



#38
 Carbon Tetrachloride
 Concen: 5.659 ug/l
 RT: 6.76 min Scan# 583
 Delta R.T. -0.11 min
 Lab File: VD060820.D
 Acq: 1 Feb 2019 15:39

Tgt Ion	Resp	Lower	Upper
117	13444		
119	0.0	75.6	113.4#
121	0.0	23.4	35.2#

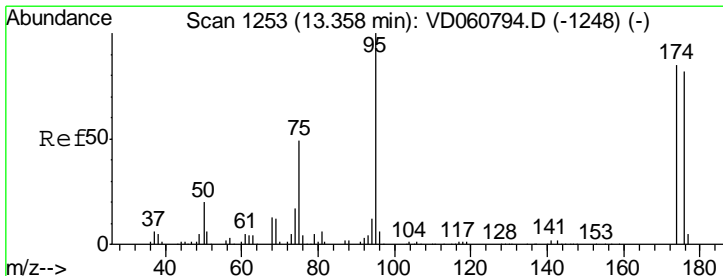
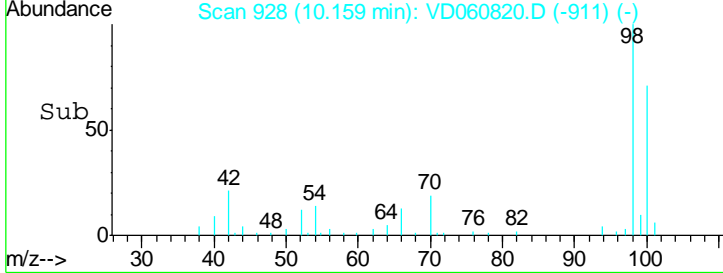
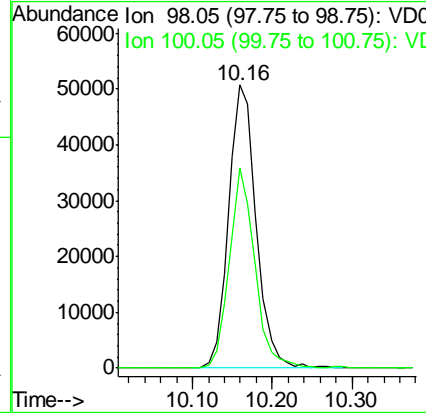
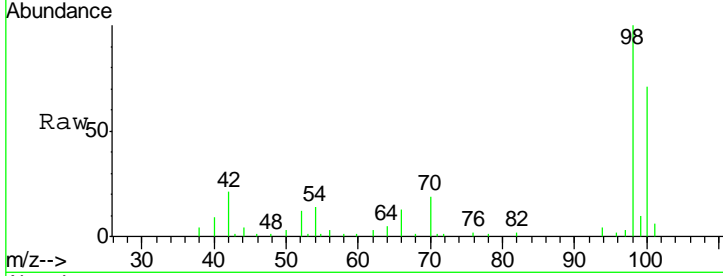




#50
 Toluene-d8
 Concen: N.D. ug/l
 RT: 10.16 min Scan# 928
 Delta R.T. -0.03 min
 Lab File: VD060820.D
 Acq: 1 Feb 2019 15:39

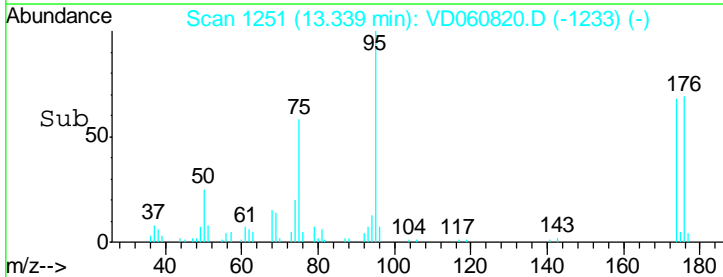
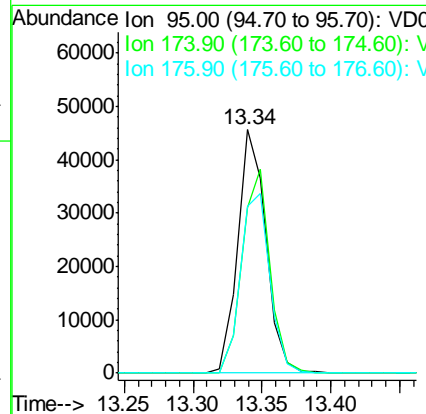
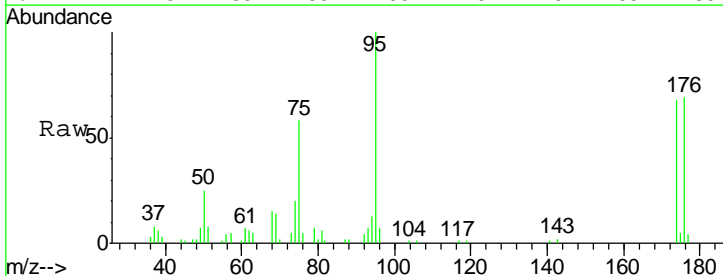
Instrument :
 MSVOA_D
 ClientSampleId :
 A0C17-SSIRE

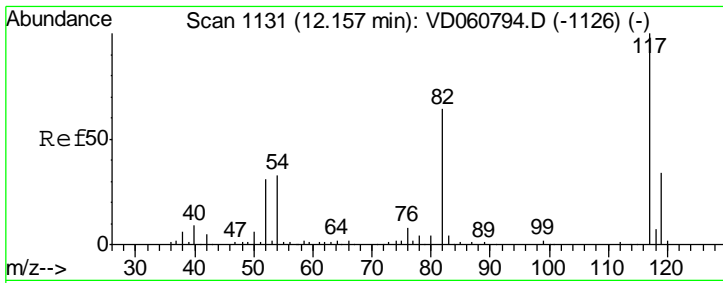
Tgt Ion: 98 Resp: 122973
 Ion Ratio Lower Upper
 98 100
 100 70.7 51.0 76.6



#62
 4-Bromofluorobenzene
 Concen: N.D. ug/l
 RT: 13.34 min Scan# 1251
 Delta R.T. -0.02 min
 Lab File: VD060820.D
 Acq: 1 Feb 2019 15:39

Tgt Ion: 95 Resp: 64901
 Ion Ratio Lower Upper
 95 100
 174 68.0 0.0 169.6
 176 68.6 0.0 163.8

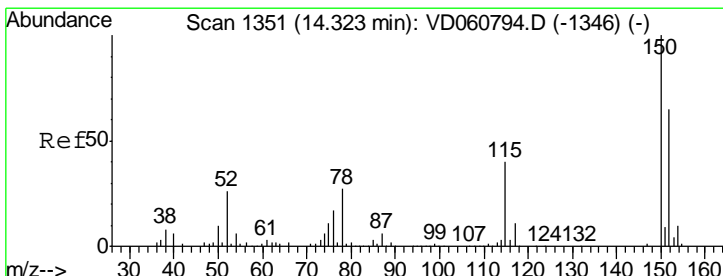
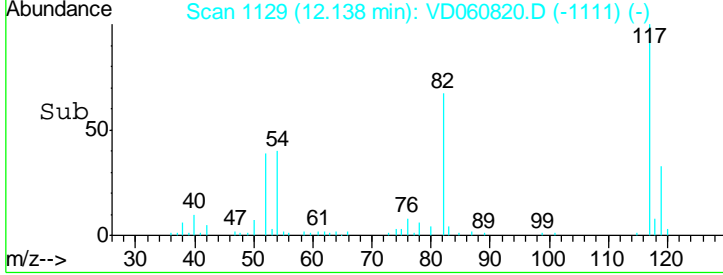
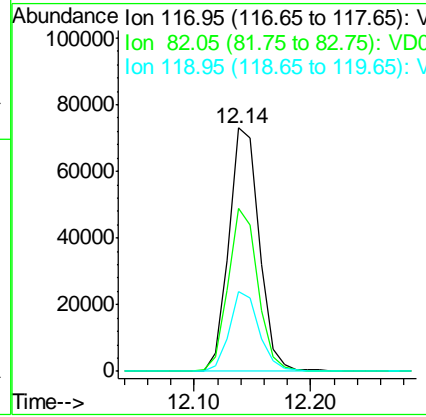
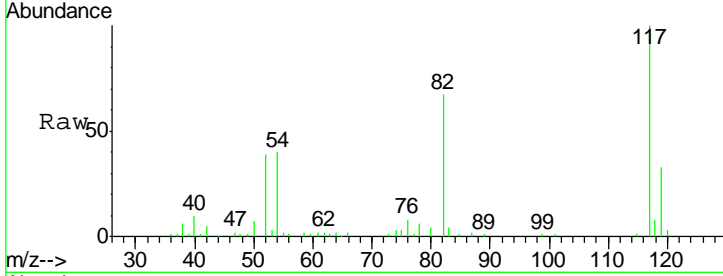




#63
 Chlorobenzene-d5
 Concen: 50.000 ug/l
 RT: 12.14 min Scan# 1129
 Delta R.T. -0.02 min
 Lab File: VD060820.D
 Acq: 1 Feb 2019 15:39

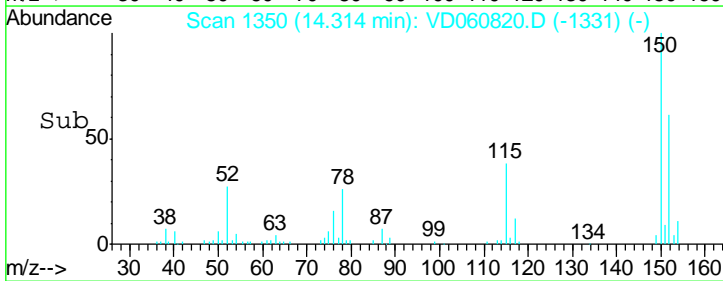
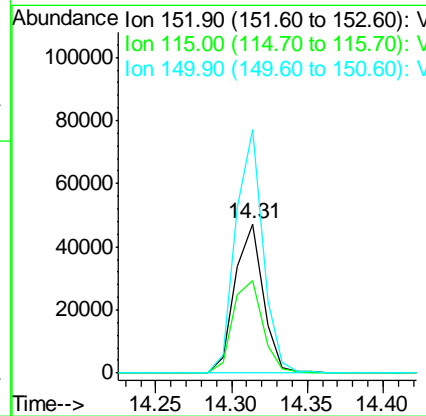
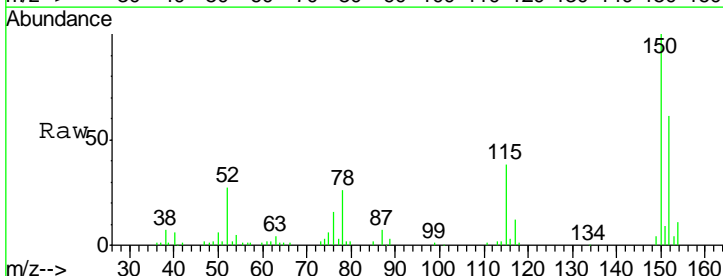
Instrument : MSVOA_D
 ClientSampled : A0C17-SSIRE

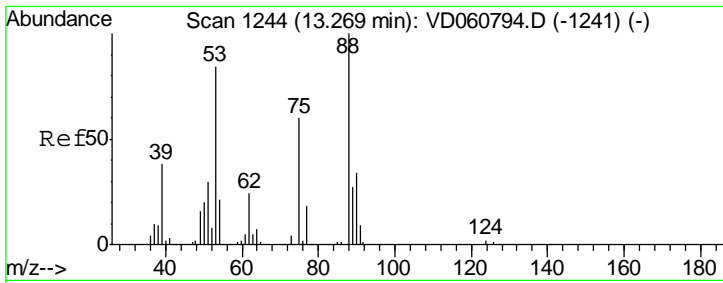
Tgt Ion	Resp	Lower	Upper
117	132160		
82	67.0	51.5	77.3
119	32.9	27.1	40.7



#72
 1,4-Dichlorobenzene-d4
 Concen: 50.000 ug/l
 RT: 14.31 min Scan# 1350
 Delta R.T. -0.01 min
 Lab File: VD060820.D
 Acq: 1 Feb 2019 15:39

Tgt Ion	Resp	Lower	Upper
152	61432		
115	62.1	31.6	95.0
150	163.0	0.0	317.6

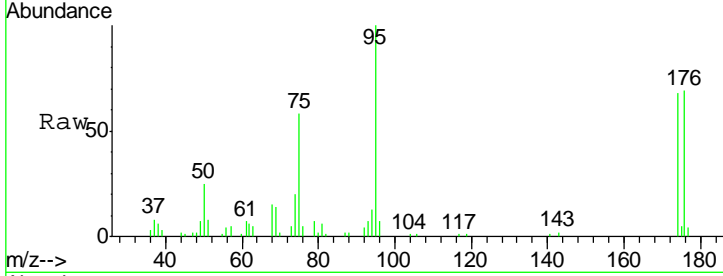




#81
 trans-1,4-Dichloro-2-butene
 Concen: 122.444 ug/l
 RT: 13.34 min Scan# 1251
 Delta R.T. 0.07 min
 Lab File: VD060820.D
 Acq: 1 Feb 2019 15:39

Instrument :
 MSVOA_D
 ClientSampleId :
 A0C17-SSIRE

Tot Ion	Resp	Lower	Upper
75	35961		
53	0.0	111.6	167.4#
89	0.0	35.9	53.9#



Abundance Ion 75.00 (74.70 to 75.70): VDC
 Ion 53.00 (52.70 to 53.70): VDC
 Ion 89.00 (88.70 to 89.70): VDC

