

Data Path : Z:\voasrv\HPCHEM1\MSVOA_D\Data\VD020321\
 Data File : VD068257.D
 Acq On : 03 Feb 2021 12:45
 Operator : VA/SY
 Sample : M1292-0-1
 Misc : 8.51G/5.00ml/MSVOA_D/SOIL
 ALS Vial : 6 Sample Multiplier: 1

Instrument :
 MSVOA_D
 ClientSampleId :
 OU421-005-0510

Quant Time: Feb 03 23:40:26 2021
 Quant Method : Z:\voasrv\HPCHEM1\MSVOA_D\Method\82D011921S.M
 Quant Title : SW846 8260
 QLast Update : Tue Jan 19 13:19:08 2021
 Response via : Initial Calibration

Compound	R.T.	QIon	Response	Conc	Units	Dev(Min)

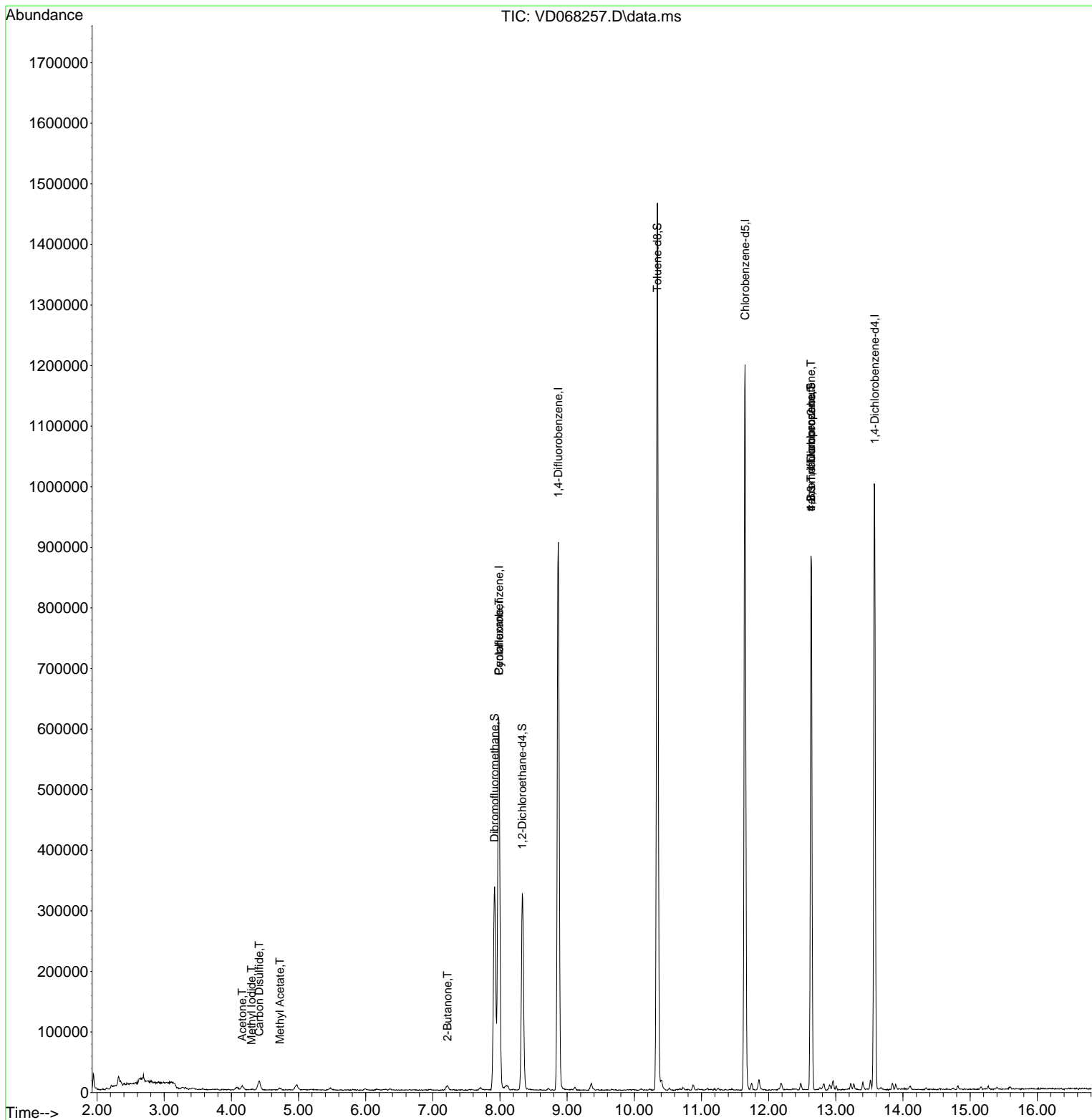
Internal Standards						
1) Pentafluorobenzene	7.985	168	475425	50.00	ug/l	0.00
34) 1,4-Difluorobenzene	8.867	114	831211	50.00	ug/l	0.00
63) Chlorobenzene-d5	11.649	117	718279	50.00	ug/l	0.00
72) 1,4-Dichlorobenzene-d4	13.579	152	277067	50.00	ug/l	0.00
System Monitoring Compounds						
33) 1,2-Dichloroethane-d4	8.332	65	259565	57.07	ug/l	0.00
Spiked Amount	50.000	Range	50 - 163	Recovery	=	114.14%
35) Dibromofluoromethane	7.920	113	248244	54.02	ug/l	0.00
Spiked Amount	50.000	Range	54 - 147	Recovery	=	108.04%
50) Toluene-d8	10.343	98	1014423	55.19	ug/l	0.00
Spiked Amount	50.000	Range	49 - 140	Recovery	=	110.38%
62) 4-Bromofluorobenzene	12.632	95	305811	46.20	ug/l	0.00
Spiked Amount	50.000	Range	25 - 144	Recovery	=	92.40%
Target Compounds						
						Qvalue
10) Methyl Iodide	4.303	142	2162	3.51	ug/l #	39
11) Tert butyl alcohol	5.214	59	317	Below	Cal #	74
16) Acetone	4.161	43	12733	15.68	ug/l	98
17) Carbon Disulfide	4.414	76	32526	1.94	ug/l	99
18) Methyl Acetate	4.726	43	3255	1.54	ug/l #	66
20) Methylene Chloride	4.967	84	6514	Below	Cal #	93
25) 2-Butanone	7.220	43	3931	3.21	ug/l #	76
31) Cyclohexane	7.985	56	13776	1.40	ug/l #	61
76) 1,2,3-Trichloropropane	12.632	75	154987	57.85	ug/l #	100
81) trans-1,4-Dichloro-2-b...	12.632	75	154987	117.07	ug/l #	13

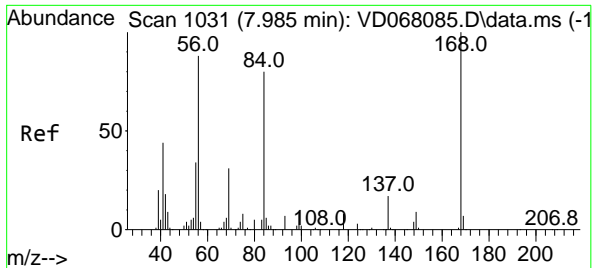
(#) = qualifier out of range (m) = manual integration (+) = signals summed

Data Path : Z:\voasrv\HPCHEM1\MSVOA_D\Data\VD020321\
 Data File : VD068257.D
 Acq On : 03 Feb 2021 12:45
 Operator : VA/SY
 Sample : M1292-0-1
 Misc : 8.51G/5.00ml/MSVOA_D/SOIL
 ALS Vial : 6 Sample Multiplier: 1

Instrument :
 MSVOA_D
 ClientSampleId :
 OU421-005-0510

Quant Time: Feb 03 23:40:26 2021
 Quant Method : Z:\voasrv\HPCHEM1\MSVOA_D\Method\82D011921S.M
 Quant Title : SW846 8260
 QLast Update : Tue Jan 19 13:19:08 2021
 Response via : Initial Calibration

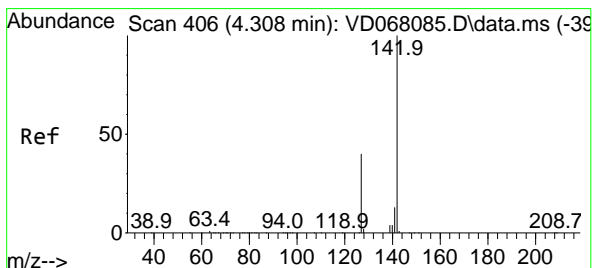
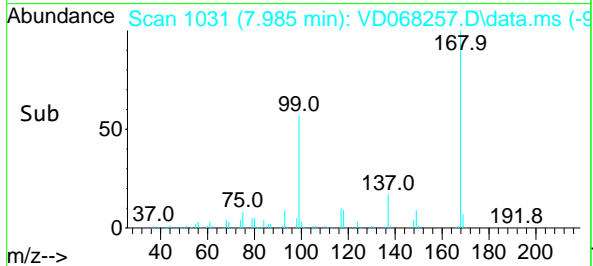
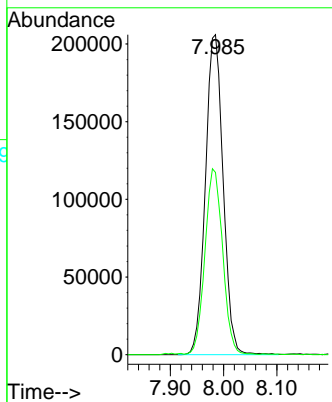
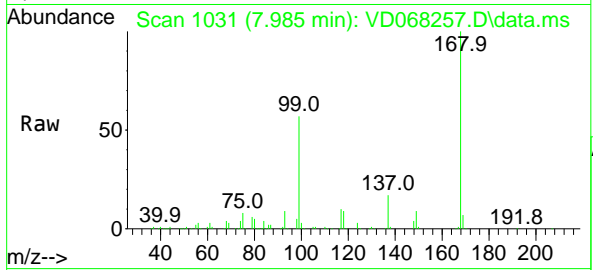




#1
 Pentafluorobenzene
 Concen: 50.00 ug/l
 RT: 7.985 min Scan# 1031
 Delta R.T. -0.000 min
 Lab File: VD068257.D
 Acq: 03 Feb 2021 12:45

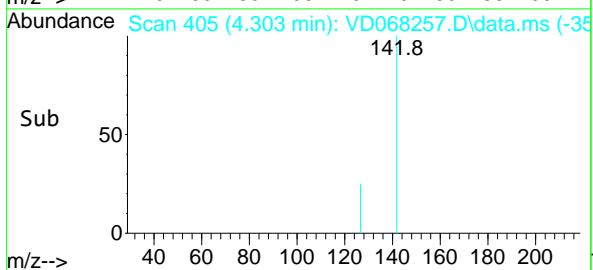
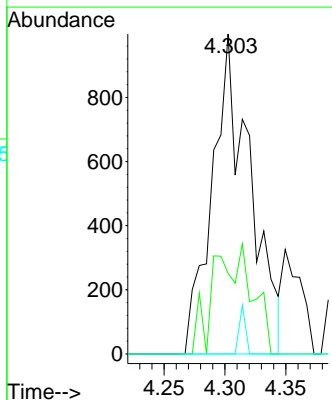
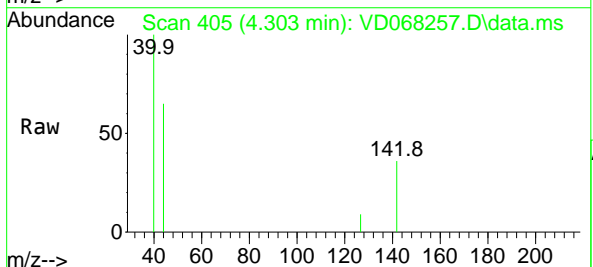
Instrument :
 MSVOA_D
ClientSampled :
 OU421-005-0510

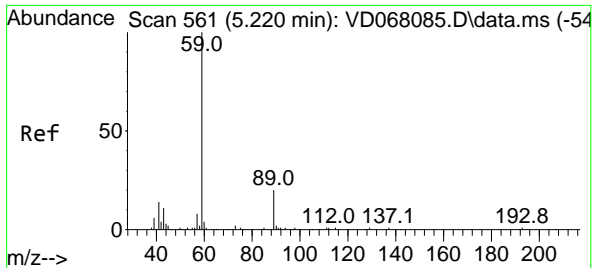
Tgt Ion:168 Resp: 475425
 Ion Ratio Lower Upper
 168 100
 99 56.7 43.5 65.3



#10
 Methyl Iodide
 Concen: 3.51 ug/l
 RT: 4.303 min Scan# 405
 Delta R.T. -0.005 min
 Lab File: VD068257.D
 Acq: 03 Feb 2021 12:45

Tgt Ion:142 Resp: 2162
 Ion Ratio Lower Upper
 142 100
 127 0.0 37.9 56.9#
 141 2.5 11.5 17.3#

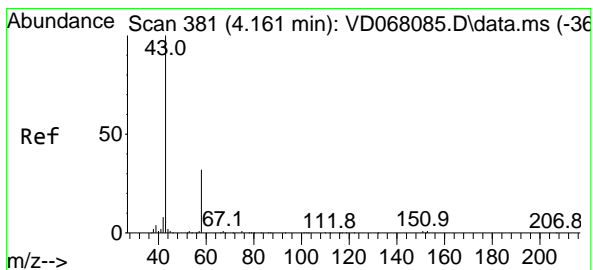
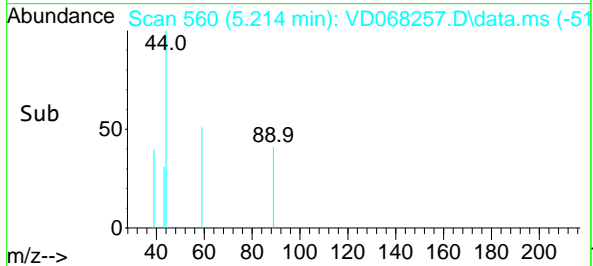
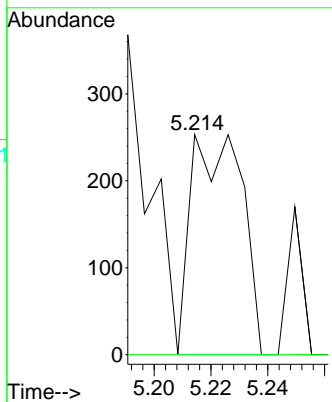
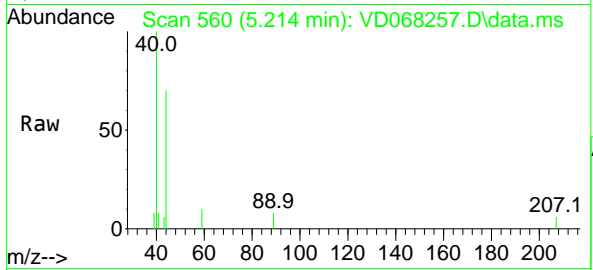




#11
 Tert butyl alcohol
 Concen: Below Cal
 RT: 5.214 min Scan# 560
 Delta R.T. -0.006 min
 Lab File: VD068257.D
 Acq: 03 Feb 2021 12:45

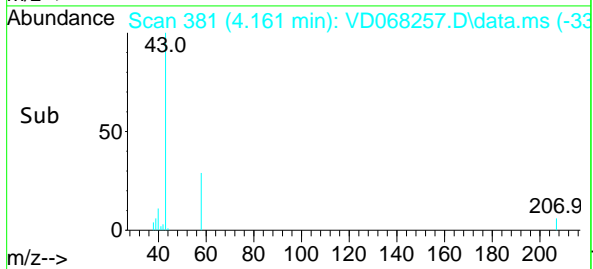
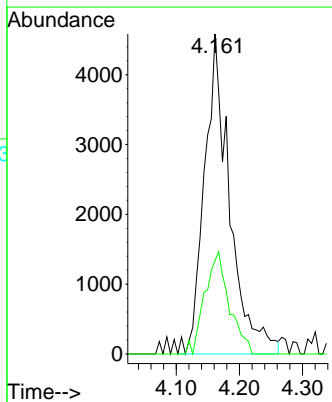
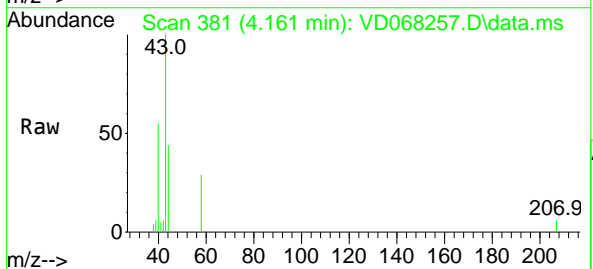
Instrument :
 MSVOA_D
ClientSampled :
 OU421-005-0510

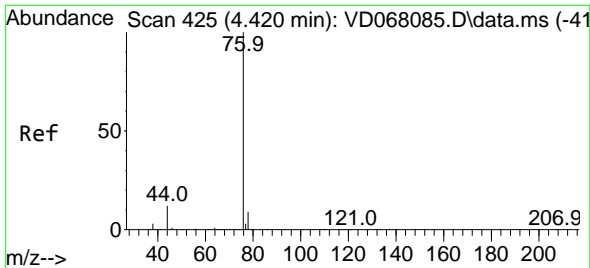
Tgt Ion: 59 Resp: 317
 Ion Ratio Lower Upper
 59 100
 57 0.0 7.4 11.2#



#16
 Acetone
 Concen: 15.68 ug/l
 RT: 4.161 min Scan# 381
 Delta R.T. 0.000 min
 Lab File: VD068257.D
 Acq: 03 Feb 2021 12:45

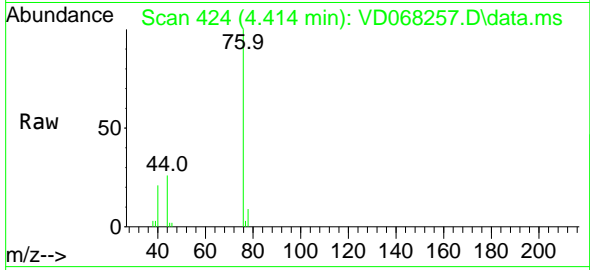
Tgt Ion: 43 Resp: 12733
 Ion Ratio Lower Upper
 43 100
 58 29.2 24.2 36.4



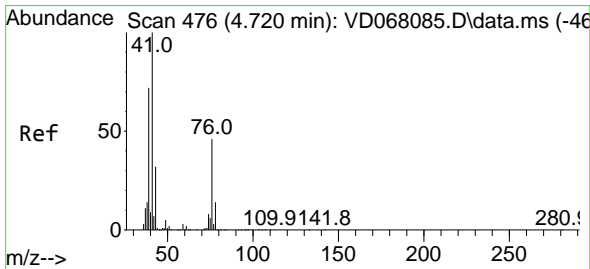
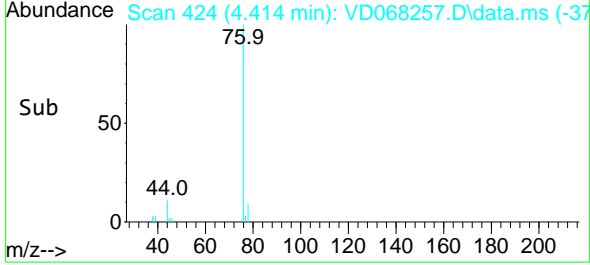
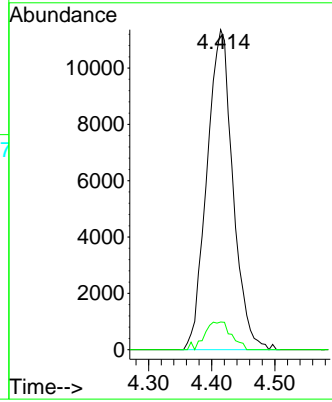


#17
 Carbon Disulfide
 Concen: 1.94 ug/l
 RT: 4.414 min Scan# 424
 Delta R.T. -0.006 min
 Lab File: VD068257.D
 Acq: 03 Feb 2021 12:45

Instrument :
 MSVOA_D
 ClientSampled :
 OU421-005-0510

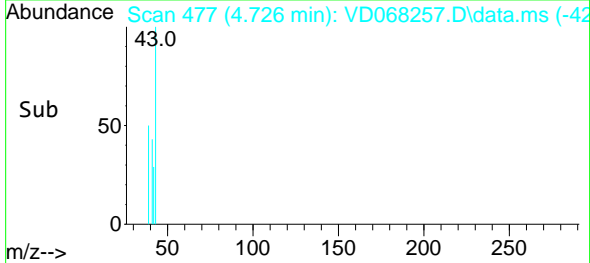
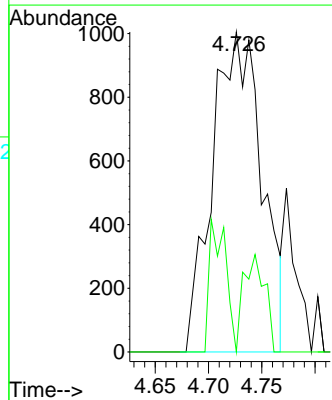
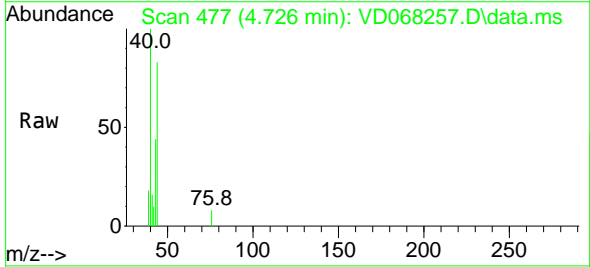


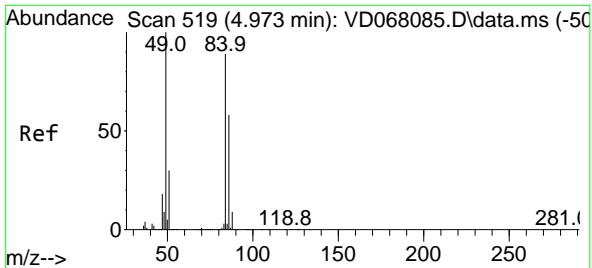
Tgt Ion: 76 Resp: 32526
 Ion Ratio Lower Upper
 76 100
 78 8.7 7.3 10.9



#18
 Methyl Acetate
 Concen: 1.54 ug/l
 RT: 4.726 min Scan# 477
 Delta R.T. 0.006 min
 Lab File: VD068257.D
 Acq: 03 Feb 2021 12:45

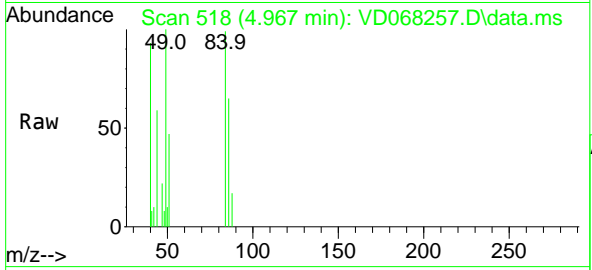
Tgt Ion: 43 Resp: 3255
 Ion Ratio Lower Upper
 43 100
 74 13.1 25.4 38.0#





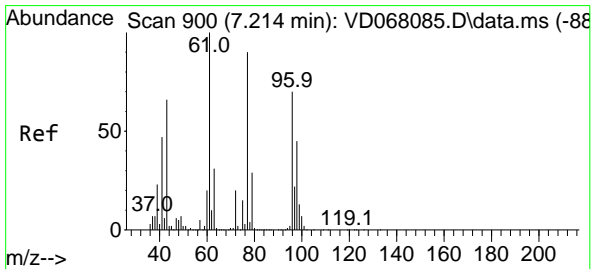
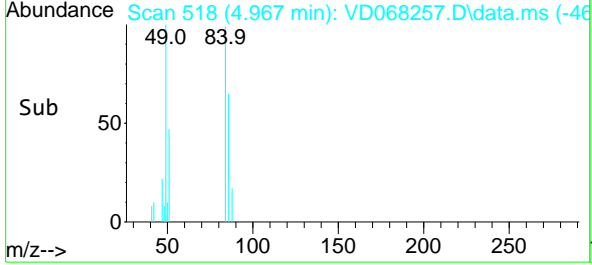
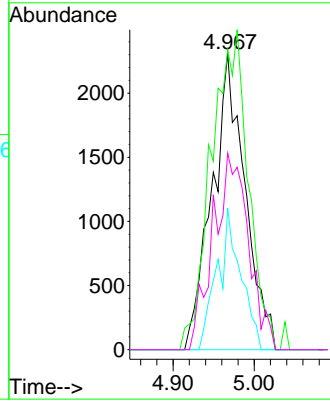
#20
 Methylene Chloride
 Concen: Below Cal
 RT: 4.967 min Scan# 518
 Delta R.T. -0.006 min
 Lab File: VD068257.D
 Acq: 03 Feb 2021 12:45

Instrument :
 MSVOA_D
 ClientSampled :
 OU421-005-0510

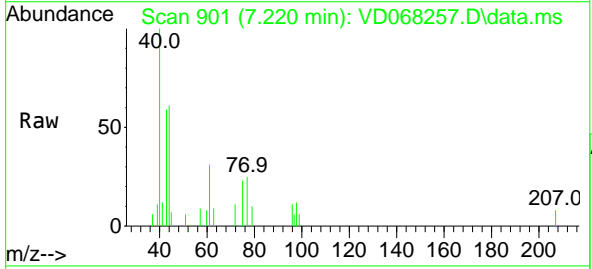


Tgt Ion: 84 Resp: 6514

Ion	Ratio	Lower	Upper
84	100		
49	101.3	77.4	116.2
51	47.8	26.1	39.1#
86	66.3	51.8	77.8

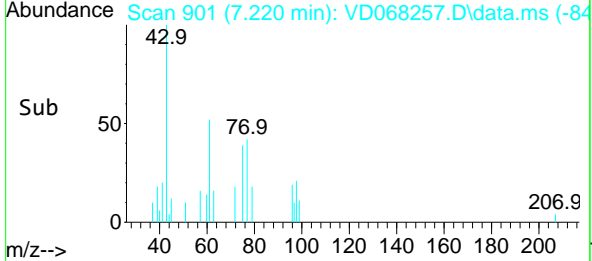
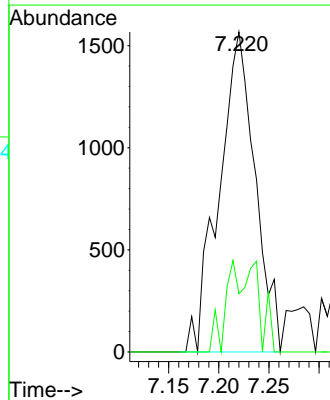


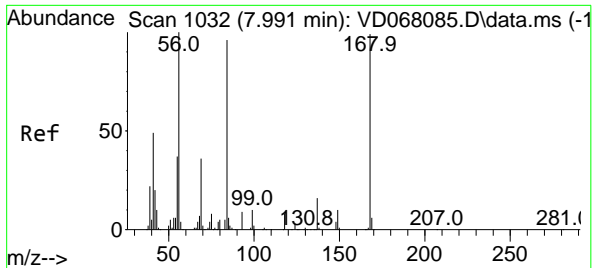
#25
 2-Butanone
 Concen: 3.21 ug/l
 RT: 7.220 min Scan# 901
 Delta R.T. 0.006 min
 Lab File: VD068257.D
 Acq: 03 Feb 2021 12:45



Tgt Ion: 43 Resp: 3931

Ion	Ratio	Lower	Upper
43	100		
72	18.2	25.1	37.7#

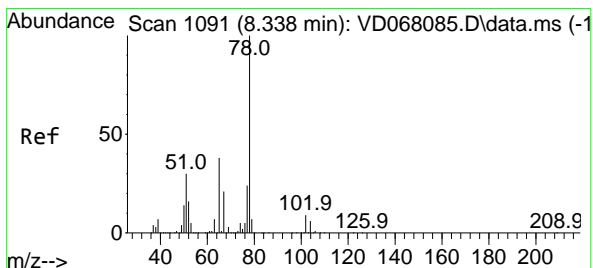
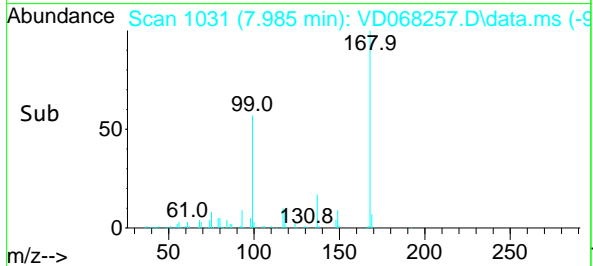
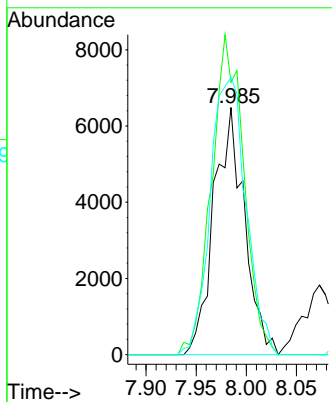
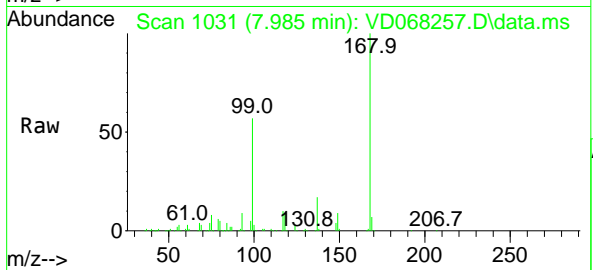




#31
 Cyclohexane
 Concen: 1.40 ug/l
 RT: 7.985 min Scan# 1031
 Delta R.T. -0.006 min
 Lab File: VD068257.D
 Acq: 03 Feb 2021 12:45

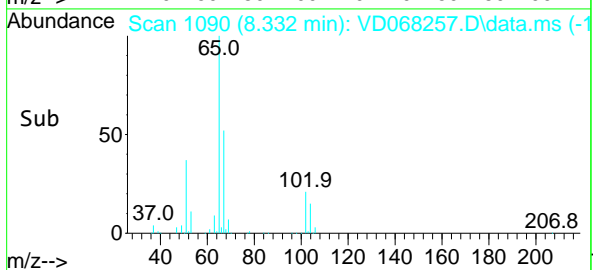
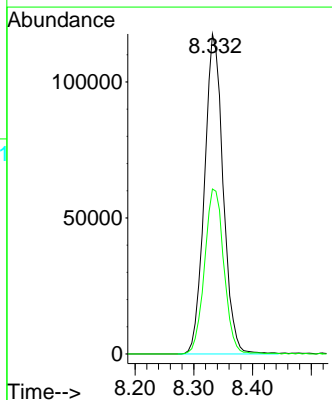
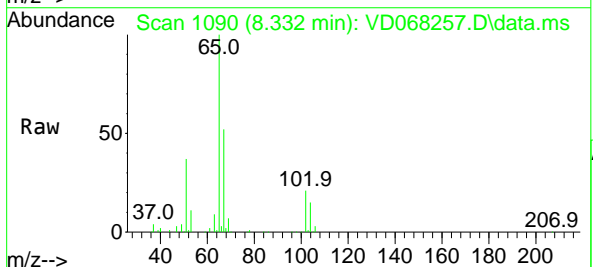
Instrument :
 MSVOA_D
ClientSampled :
 OU421-005-0510

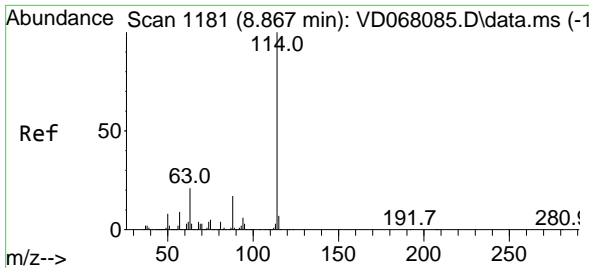
Tgt Ion	Resp	Lower	Upper
56	13776		
69	110.2	30.1	45.1#
84	112.2	82.1	123.1



#33
 1,2-Dichloroethane-d4
 Concen: 57.07 ug/l
 RT: 8.332 min Scan# 1090
 Delta R.T. -0.006 min
 Lab File: VD068257.D
 Acq: 03 Feb 2021 12:45

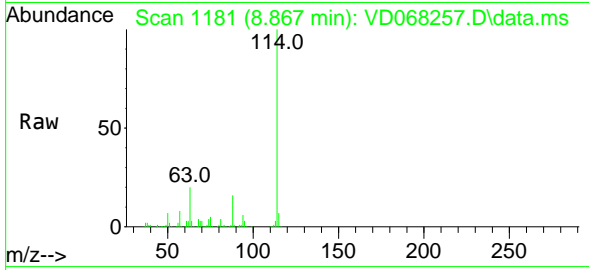
Tgt Ion	Resp	Lower	Upper
65	259565		
67	53.4	0.0	105.0





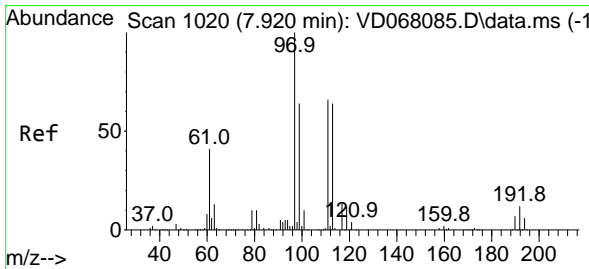
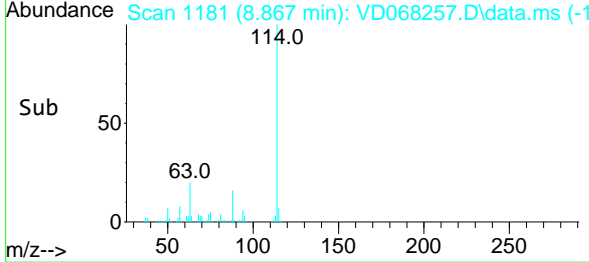
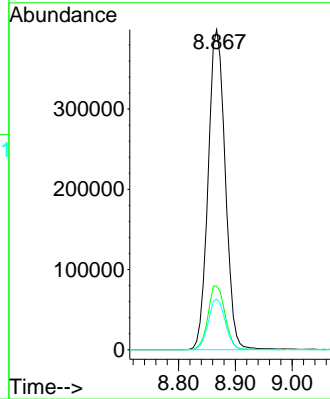
#34
 1,4-Difluorobenzene
 Concen: 50.00 ug/l
 RT: 8.867 min Scan# 1181
 Delta R.T. 0.000 min
 Lab File: VD068257.D
 Acq: 03 Feb 2021 12:45

Instrument :
 MSVOA_D
 ClientSampled :
 OU421-005-0510

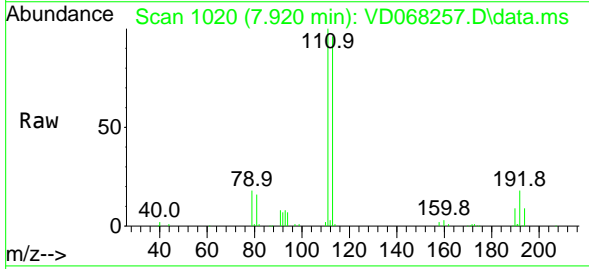


Tgt Ion:114 Resp: 831211

Ion	Ratio	Lower	Upper
114	100		
63	19.9	0.0	34.8
88	15.8	0.0	31.6

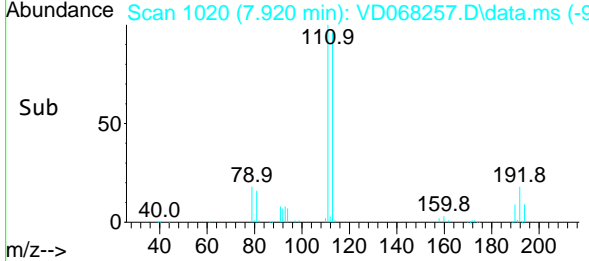
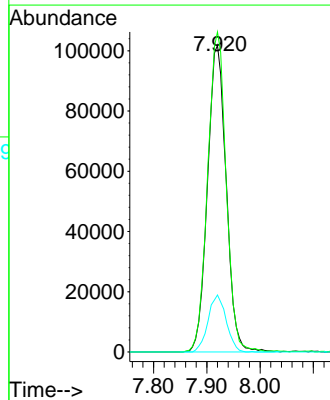


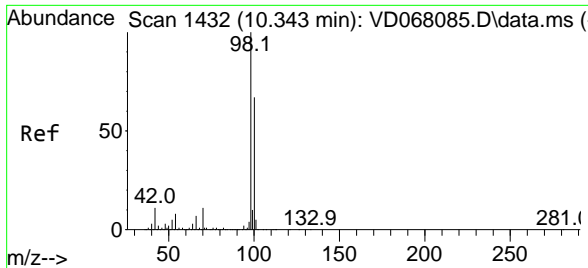
#35
 Dibromofluoromethane
 Concen: 54.02 ug/l
 RT: 7.920 min Scan# 1020
 Delta R.T. 0.000 min
 Lab File: VD068257.D
 Acq: 03 Feb 2021 12:45



Tgt Ion:113 Resp: 248244

Ion	Ratio	Lower	Upper
113	100		
111	103.2	81.4	122.0
192	17.9	16.1	24.1

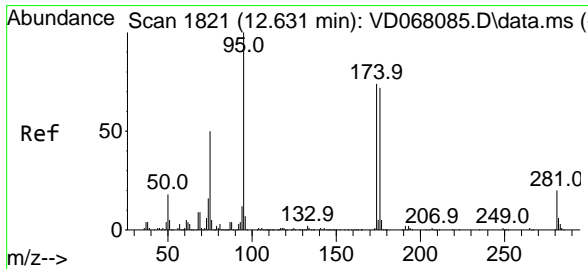
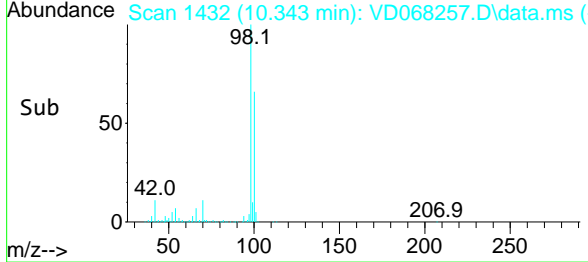
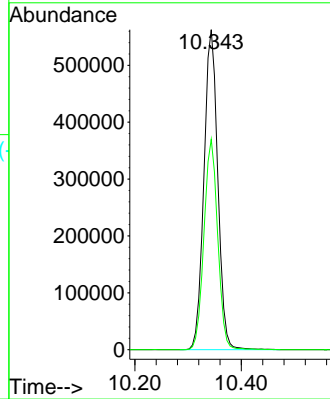
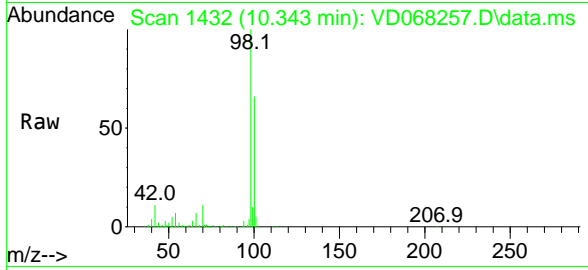




#50
 Toluene-d8
 Concen: 55.19 ug/l
 RT: 10.343 min Scan# 1432
 Delta R.T. 0.000 min
 Lab File: VD068257.D
 Acq: 03 Feb 2021 12:45

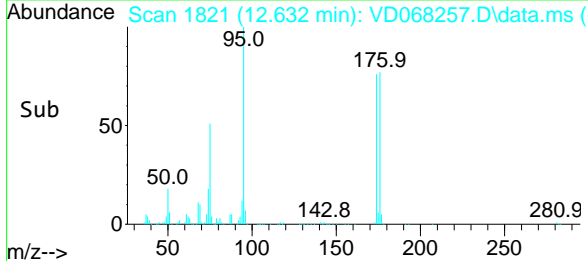
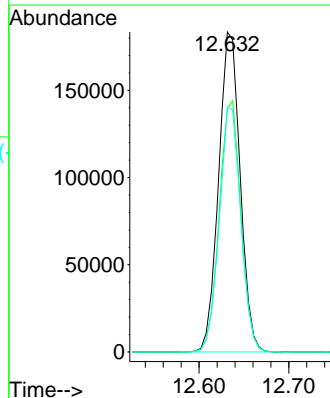
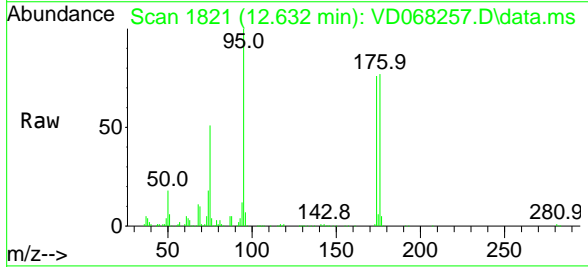
Instrument :
 MSVOA_D
 ClientSampleID :
 OU421-005-0510

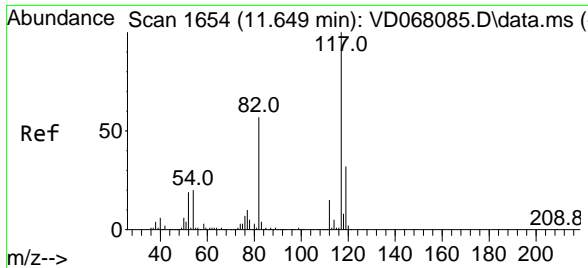
Tgt Ion: 98 Resp: 1014423
 Ion Ratio Lower Upper
 98 100
 100 65.2 53.0 79.4



#62
 4-Bromofluorobenzene
 Concen: 46.20 ug/l
 RT: 12.632 min Scan# 1821
 Delta R.T. 0.000 min
 Lab File: VD068257.D
 Acq: 03 Feb 2021 12:45

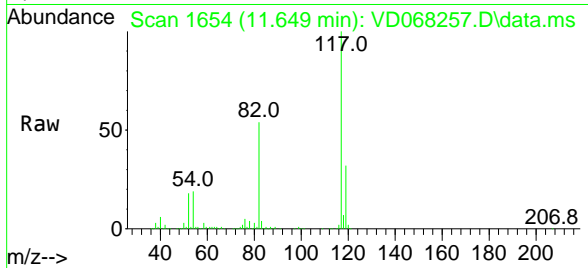
Tgt Ion: 95 Resp: 305811
 Ion Ratio Lower Upper
 95 100
 174 78.7 0.0 172.4
 176 76.3 0.0 168.4





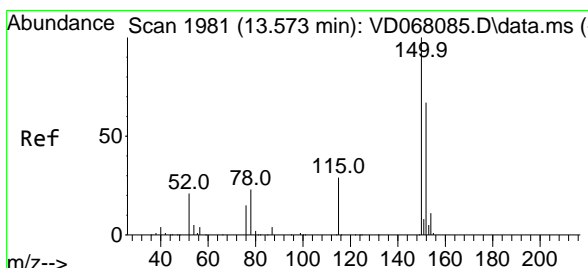
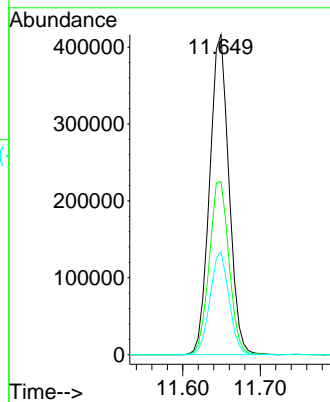
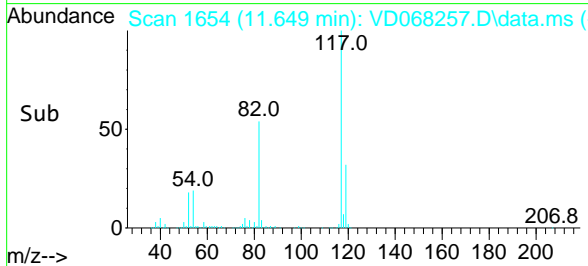
#63
 Chlorobenzene-d5
 Concen: 50.00 ug/l
 RT: 11.649 min Scan# 1654
 Delta R.T. 0.000 min
 Lab File: VD068257.D
 Acq: 03 Feb 2021 12:45

Instrument :
 MSVOA_D
 ClientSampleId :
 OU421-005-0510

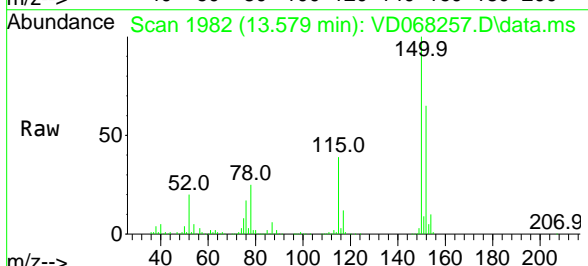


Tgt Ion:117 Resp: 718279

Ion	Ratio	Lower	Upper
117	100		
82	54.1	41.4	62.0
119	32.1	26.1	39.1

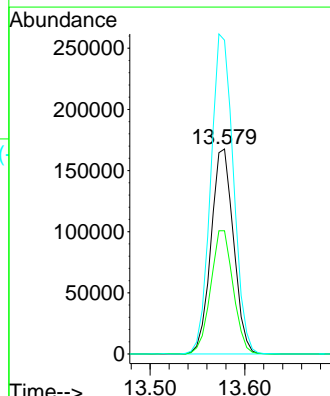
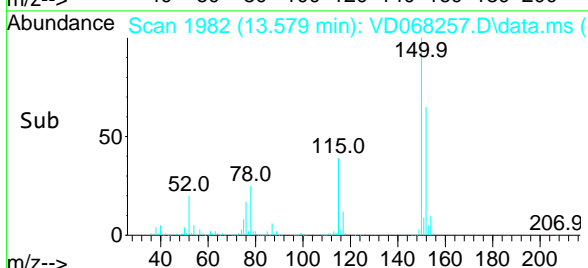


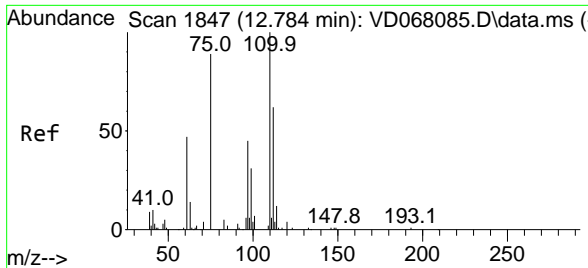
#72
 1,4-Dichlorobenzene-d4
 Concen: 50.00 ug/l
 RT: 13.579 min Scan# 1982
 Delta R.T. 0.006 min
 Lab File: VD068257.D
 Acq: 03 Feb 2021 12:45



Tgt Ion:152 Resp: 277067

Ion	Ratio	Lower	Upper
152	100		
115	60.1	28.9	86.8
150	157.5	0.0	344.4

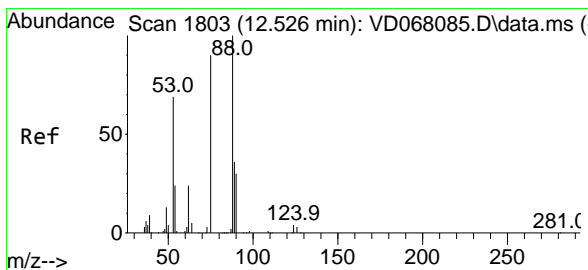
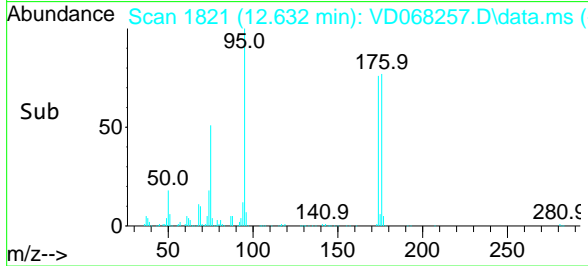
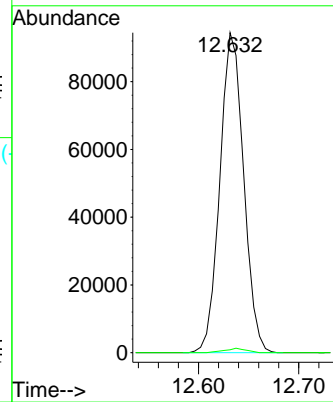
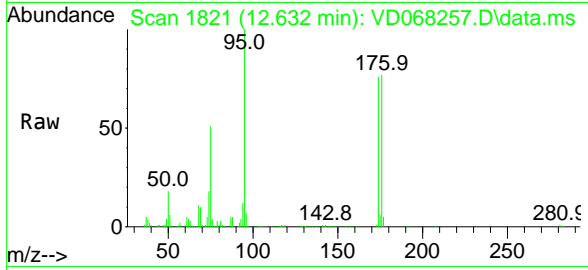




#76
 1,2,3-Trichloropropane
 Concen: 57.85 ug/l
 RT: 12.632 min Scan# 1821
 Delta R.T. -0.153 min
 Lab File: VD068257.D
 Acq: 03 Feb 2021 12:45

Instrument :
 MSVOA_D
 ClientSampled :
 OU421-005-0510

Tgt Ion: 75 Resp: 154987
 Ion Ratio Lower Upper
 75 100
 77 1.2 0.0 0.0#



#81
 trans-1,4-Dichloro-2-butene
 Concen: 117.07 ug/l
 RT: 12.632 min Scan# 1821
 Delta R.T. 0.106 min
 Lab File: VD068257.D
 Acq: 03 Feb 2021 12:45

Tgt Ion: 75 Resp: 154987
 Ion Ratio Lower Upper
 75 100
 53 0.0 70.2 105.2#
 89 0.1 40.3 60.5#

