

Data Path : Z:\voasrv\HPCHEM1\MSVOA\_D\Data\VD020421\  
 Data File : VD068290.D  
 Acq On : 04 Feb 2021 21:24  
 Operator : VA/SY  
 Sample : M1315-02  
 Misc : 5.01G/5.00ml/MSVOA\_D/SOIL  
 ALS Vial : 19 Sample Multiplier: 1

Instrument :  
 MSVOA\_D  
 ClientSampleId :  
 SP-1A

Integration Parameters: RTEINT.P

Integrator: RTE  
 Smoothing : ON Filtering: 5  
 Sampling : 1 Min Area: 3 % of largest Peak  
 Start Thrs: 0.2 Max Peaks: 100  
 Stop Thrs : 0 Peak Location: TOP

If leading or trailing edge < 100 prefer < Baseline drop else tangent >  
 Peak separation: 5

Method : Z:\voasrv\HPCHEM1\MSVOA\_D\Method\82D011921S.M  
 Title : SW846 8260

Signal : TIC: VD068290.D\data.ms

peak #	R.T. min	first scan	max scan	last scan	PK TY	peak height	corr. area	corr. % max.	% of total
1	4.967	509	518	528	rBV4	15983	48342	1.75%	0.351%
2	7.208	888	899	909	rBV6	10319	29993	1.09%	0.218%
3	7.920	1009	1020	1025	rBV2	342780	839715	30.44%	6.105%
4	7.979	1025	1030	1041	rVB	608834	1360702	49.33%	9.893%
5	8.332	1082	1090	1102	rVB	307940	707148	25.64%	5.141%
6	8.867	1172	1181	1195	rBV	950731	1919641	69.59%	13.957%
7	10.343	1423	1432	1440	rBV	1517884	2758497	100.00%	20.056%
8	10.726	1489	1497	1502	rBV2	22826	40629	1.47%	0.295%
9	11.649	1646	1654	1666	rBV	1294666	2258802	81.89%	16.423%
10	11.855	1684	1689	1699	rVB4	16746	29992	1.09%	0.218%
11	12.632	1810	1821	1831	rBV	998568	1673100	60.65%	12.165%
12	13.573	1974	1981	1990	rVB	1238670	2053318	74.44%	14.929%
13	14.102	2066	2071	2078	rVB4	18894	33898	1.23%	0.246%

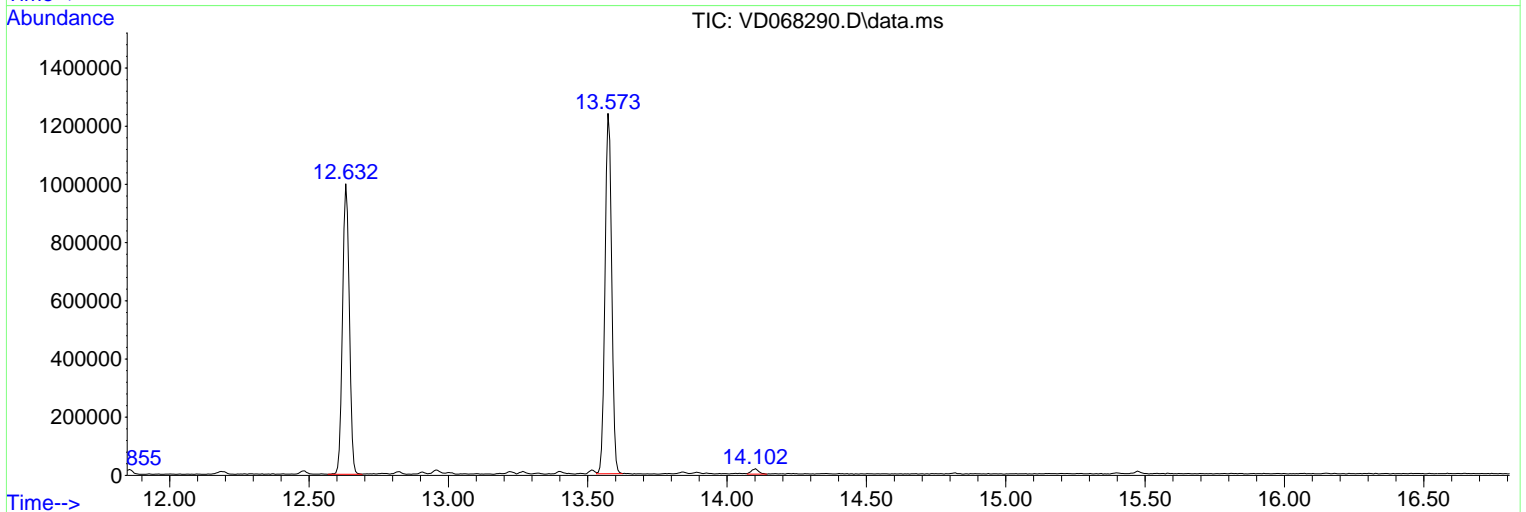
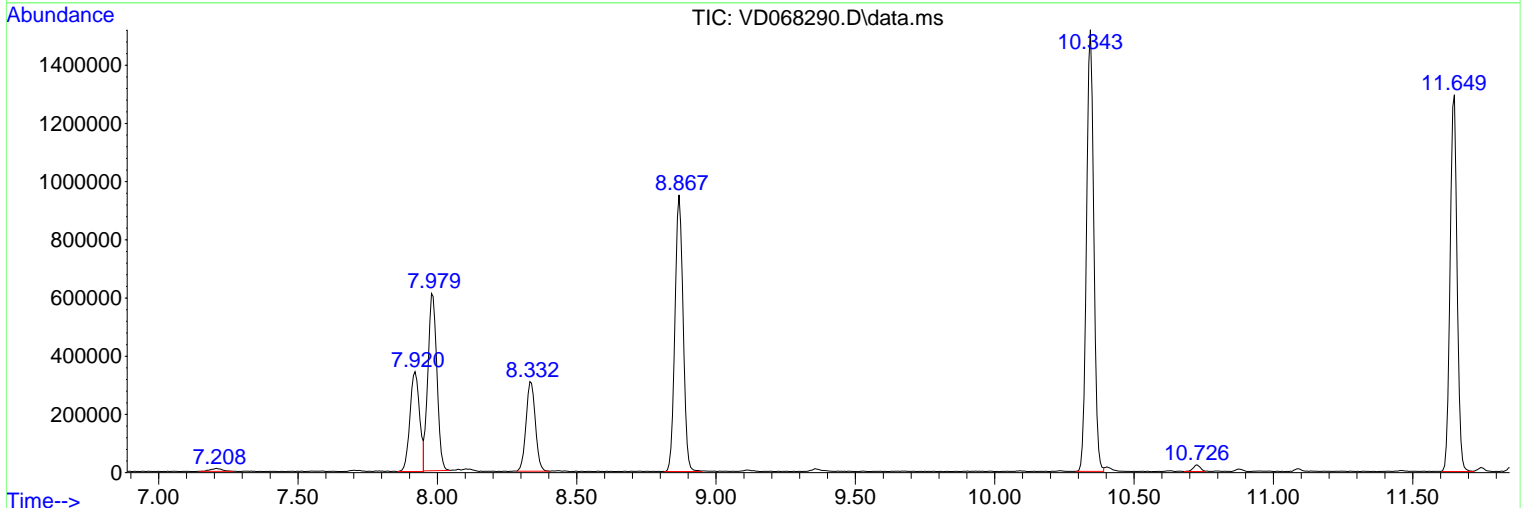
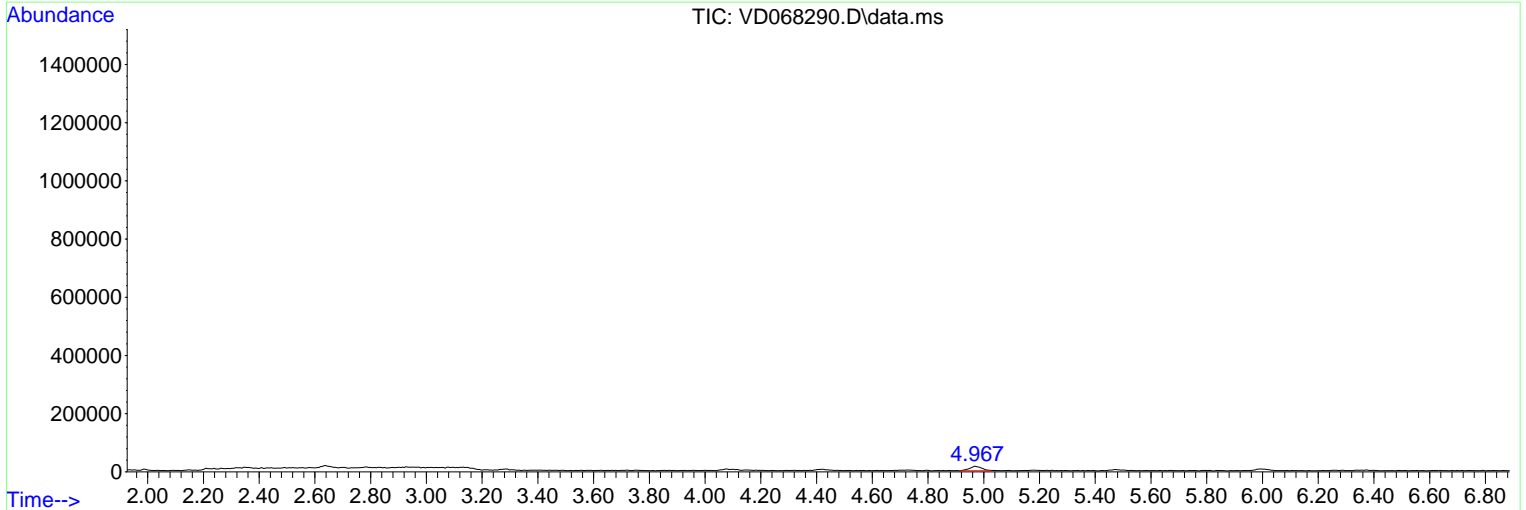
Sum of corrected areas: 13753777

Data Path : Z:\voasrv\HPCHEM1\MSVOA\_D\Data\VD020421\  
 Data File : VD068290.D  
 Acq On : 04 Feb 2021 21:24  
 Operator : VA/SY  
 Sample : M1315-02  
 Misc : 5.01G/5.00ml/MSVOA\_D/SOIL  
 ALS Vial : 19 Sample Multiplier: 1

**Instrument :**  
 MSVOA\_D  
**ClientSampleId :**  
 SP-1A

Quant Method : Z:\voasrv\HPCHEM1\MSVOA\_D\Method\82D011921S.M  
 Quant Title : SW846 8260

TIC Library : C:\Database\NIST11.L  
 TIC Integration Parameters: LSCINT.P



Library Search Compound Report

Data Path : Z:\voasrv\HPCHEM1\MSVOA\_D\Data\VD020421\  
Data File : VD068290.D  
Acq On : 04 Feb 2021 21:24  
Operator : VA/SY  
Sample : M1315-02  
Misc : 5.01G/5.00ml/MSVOA\_D/SOIL  
ALS Vial : 19 Sample Multiplier: 1

Instrument :  
MSVOA\_D  
ClientSampleId :  
SP-1A

Quant Method : Z:\voasrv\HPCHEM1\MSVOA\_D\Method\82D011921S.M  
Quant Title : SW846 8260

TIC Library : C:\Database\NIST11.L  
TIC Integration Parameters: LSCINT.P

No Library Search Compounds Detected

\*\*\*\*\*

Data Path : Z:\voasrv\HPCHEM1\MSVOA\_D\Data\VD020421\  
Data File : VD068290.D  
Acq On : 04 Feb 2021 21:24  
Operator : VA/SY  
Sample : M1315-02  
Misc : 5.01G/5.00ml/MSVOA\_D/SOIL  
ALS Vial : 19 Sample Multiplier: 1

Instrument :  
MSVOA\_D  
ClientSampled :  
SP-1A

Quant Method : Z:\voasrv\HPCHEM1\MSVOA\_D\Method\82D011921S.M  
Quant Title : SW846 8260

TIC Library : C:\Database\NIST11.L  
TIC Integration Parameters: LSCINT.P

TIC Top Hit name	RT	EstConc	Units	Response	--Internal Standard--			
					#	RT	Resp	Conc

---