

Data Path : Z:\VOASRV\HPCHEM1\MSVOA D\DATA\VD020520\
 Data File : VD065075.D
 Acq On : 05 Feb 2020 20:34
 Operator : VA/SY
 Sample : L1408-17
 Misc : 4.67G/5.00ml/MSVOA D/SOIL
 ALS Vial : 20 Sample Multiplier: 1

Instrument :
 MSVOA_D
 ClientSampleId :
 SHORE-RD-PATH-BH-02-B

Integration Parameters: RTEINT.P

Integrator: RTE
 Smoothing : ON Filtering: 5
 Sampling : 1 Min Area: 3 % of largest Peak
 Start Thrs: 0.2 Max Peaks: 100
 Stop Thrs : 0 Peak Location: TOP

If leading or trailing edge < 100 prefer < Baseline drop else tangent >
 Peak separation: 5

Method : Z:\VOASRV\HPCHEM1\MSVOA_D\METHOD\82D020520S.M
 Title : SW846 8260

Signal : TIC

peak #	R.T. min	first scan	max scan	last scan	PK TY	peak height	corr. area	corr. % max.	% of total
1	4.962	507	517	518	rBV3	15976	31563	1.08%	0.189%
2	7.220	889	901	912	rBV2	50450	147926	5.04%	0.886%
3	7.920	1009	1020	1025	rBV	386757	923361	31.49%	5.533%
4	7.985	1025	1031	1042	rVB	711601	1582158	53.95%	9.481%
5	8.338	1074	1091	1102	rBV2	323767	946495	32.28%	5.672%
6	8.867	1173	1181	1196	rBV	1035766	2094904	71.44%	12.553%
7	10.344	1424	1432	1442	rBV	1643257	2932572	100.00%	17.572%
8	10.732	1490	1498	1506	rBV	114970	218643	7.46%	1.310%
9	11.096	1553	1560	1565	rBV2	18517	32009	1.09%	0.192%
10	11.467	1617	1623	1631	rVB	49416	80855	2.76%	0.484%
11	11.649	1646	1654	1666	rBV	1564180	2713957	92.55%	16.262%
12	12.643	1814	1823	1832	rBV	1291255	2169465	73.98%	13.000%
13	13.226	1917	1922	1927	rVB4	17825	29732	1.01%	0.178%
14	13.438	1950	1958	1964	rVV5	25108	47281	1.61%	0.283%
15	13.585	1975	1983	1990	rVV	1650816	2682613	91.48%	16.075%
16	13.638	1990	1992	2005	rVB3	30158	54980	1.87%	0.329%

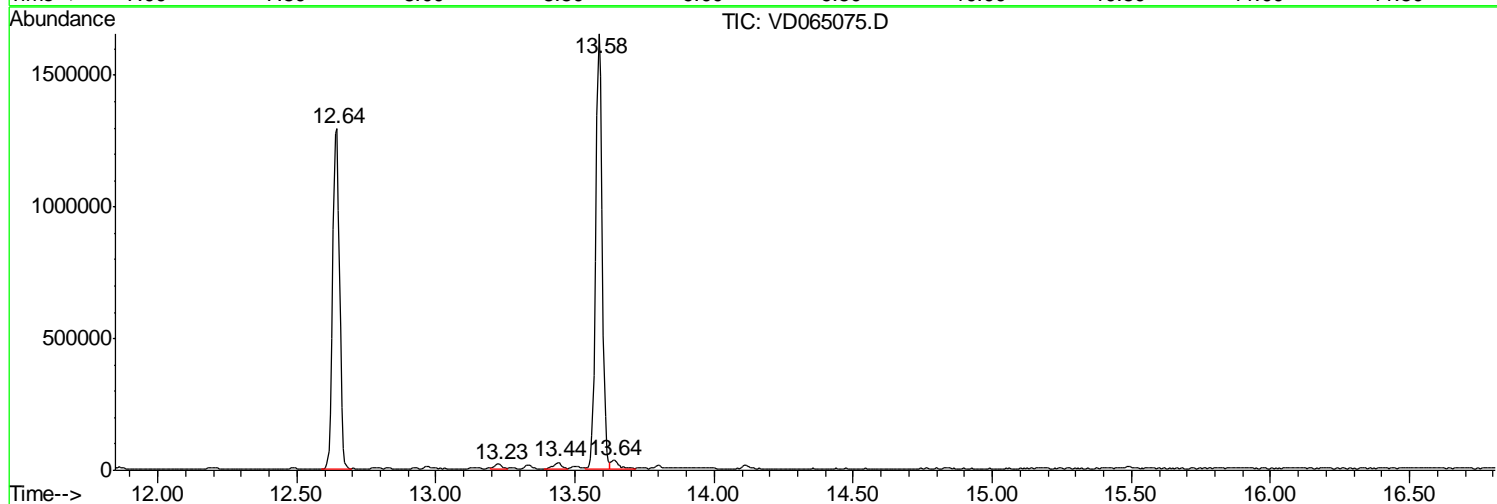
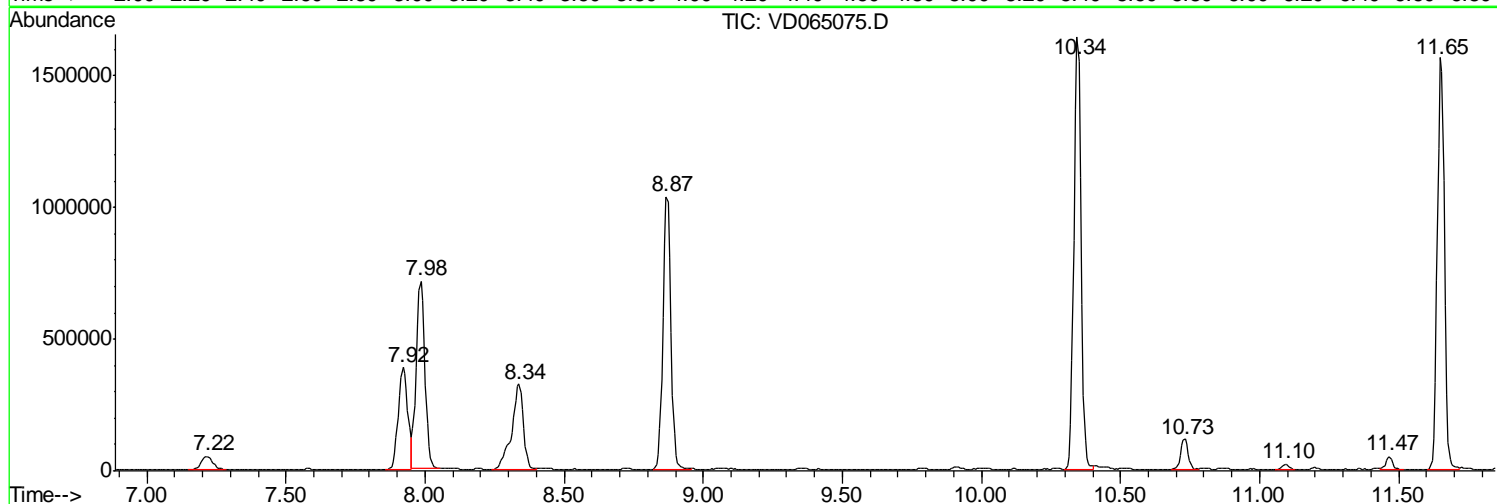
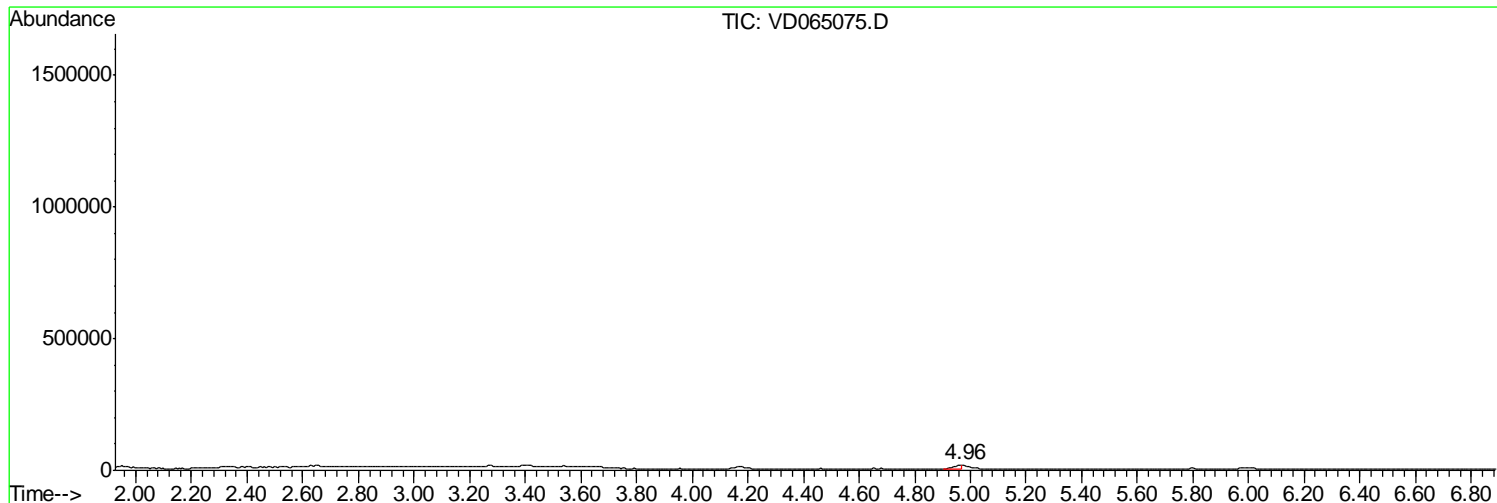
Sum of corrected areas: 16688514

Data Path : Z:\VOASRV\HPCHEM1\MSVOA D\DATA\VD020520\
 Data File : VD065075.D
 Acq On : 05 Feb 2020 20:34
 Operator : VA/SY
 Sample : L1408-17
 Misc : 4.67G/5.00ml/MSVOA D/SOIL
 ALS Vial : 20 Sample Multiplier: 1

Instrument :
 MSVOA_D
ClientSampled :
 SHORE-RD-PATH-BH-02-B

Quant Method : Z:\VOASRV\HPCHEM1\MSVOA_D\METHOD\82D020520S.M
 Quant Title : SW846 8260

TIC Library : C:\DATABASE\NIST11.L
 TIC Integration Parameters: LSCINT.P



Data Path : Z:\VOASRV\HPCHEM1\MSVOA_D\DATA\VD020520\
Data File : VD065075.D
Acq On : 05 Feb 2020 20:34
Operator : VA/SY
Sample : L1408-17
Misc : 4.67G/5.00ml/MSVOA_D/SOIL
ALS Vial : 20 Sample Multiplier: 1

Instrument :
MSVOA_D
ClientSampleId :
SHORE-RD-PATH-BH-02-B

Quant Method : Z:\VOASRV\HPCHEM1\MSVOA_D\METHOD\82D020520S.M
Quant Title : SW846 8260

TIC Library : C:\DATABASE\NIST11.L
TIC Integration Parameters: LSCINT.P

No Library Search Compounds Detected

Data Path : Z:\VOASRV\HPCHEM1\MSVOA_D\DATA\VD020520\
Data File : VD065075.D
Acq On : 05 Feb 2020 20:34
Operator : VA/SY
Sample : L1408-17
Misc : 4.67G/5.00ml/MSVOA_D/SOIL
ALS Vial : 20 Sample Multiplier: 1

Instrument :
MSVOA_D
ClientSampleId :
SHORE-RD-PATH-BH-02-B

Quant Method : Z:\VOASRV\HPCHEM1\MSVOA_D\METHOD\82D020520S.M
Quant Title : SW846 8260

TIC Library : C:\DATABASE\NIST11.L
TIC Integration Parameters: LSCINT.P

TIC Top Hit name	RT	EstConc	Units	Response	--Internal Standard--			
					#	RT	Resp	Conc
