

Data Path : Z:\voasrv\HPCHEM1\MSVOA_D\Data\VD020521\
 Data File : VD068304.D
 Acq On : 05 Feb 2021 16:47
 Operator : VA/SY
 Sample : M1317-01RE
 Misc : 7.86G/5.00ml/MSVOA_D/SOIL
 ALS Vial : 12 Sample Multiplier: 1

Instrument :
 MSVOA_D
 ClientSampleId :
 R-ARE

Quant Time: Feb 05 21:43:22 2021
 Quant Method : Z:\voasrv\HPCHEM1\MSVOA_D\Method\82D011921S.M
 Quant Title : SW846 8260
 QLast Update : Tue Jan 19 13:19:08 2021
 Response via : Initial Calibration

Compound	R.T.	QIon	Response	Conc	Units	Dev(Min)

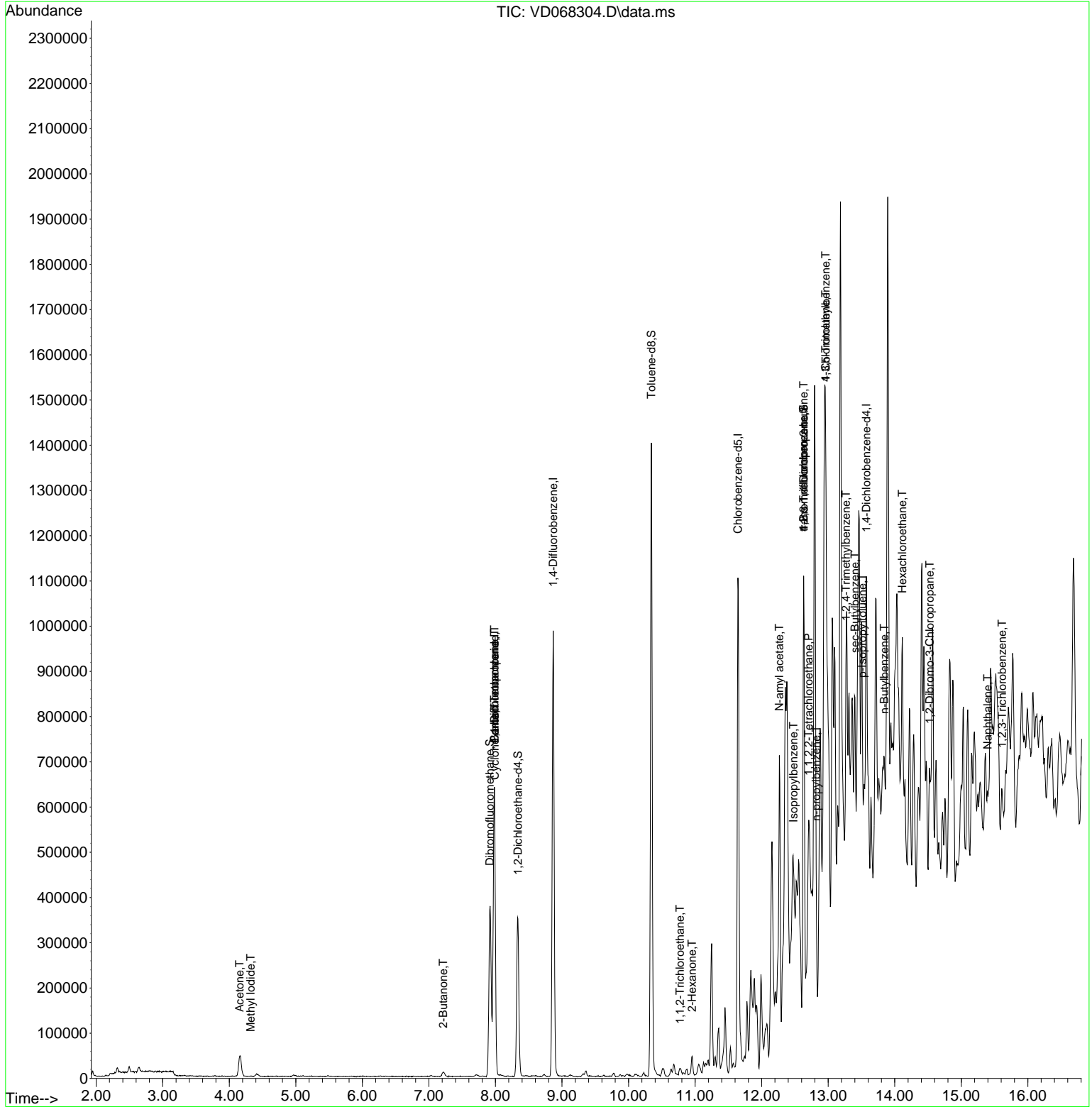
Internal Standards						
1) Pentafluorobenzene	7.985	168	491674	50.00	ug/l	0.00
34) 1,4-Difluorobenzene	8.867	114	893964	50.00	ug/l	0.00
63) Chlorobenzene-d5	11.643	117	663812	50.00	ug/l	0.00
72) 1,4-Dichlorobenzene-d4	13.573	152	167334	50.00	ug/l	0.00
System Monitoring Compounds						
33) 1,2-Dichloroethane-d4	8.338	65	283063	60.18	ug/l	0.00
Spiked Amount	50.000	Range	50 - 163	Recovery	=	120.36%
35) Dibromofluoromethane	7.914	113	281520	56.96	ug/l	0.00
Spiked Amount	50.000	Range	54 - 147	Recovery	=	113.92%
50) Toluene-d8	10.343	98	982682	49.71	ug/l	0.00
Spiked Amount	50.000	Range	49 - 140	Recovery	=	99.42%
62) 4-Bromofluorobenzene	12.632	95	259017	36.38	ug/l	0.00
Spiked Amount	50.000	Range	25 - 144	Recovery	=	72.76%
Target Compounds						
						Qvalue
10) Methyl Iodide	4.320	142	210	3.19	ug/l #	38
11) Tert butyl alcohol	5.232	59	287	Below	Cal #	74
16) Acetone	4.156	43	84860	101.05	ug/l	99
20) Methylene Chloride	4.973	84	2976	Below	Cal #	76
25) 2-Butanone	7.214	43	16240	12.84	ug/l	99
31) Cyclohexane	7.991	56	11334	1.11	ug/l #	29
36) 1,1-Dichloropropene	7.985	75	37884	4.20	ug/l #	47
38) Carbon Tetrachloride	7.985	117	49104	5.82	ug/l #	16
55) 1,1,2-Trichloroethane	10.773	97	5993	1.35	ug/l #	23
59) 2-Hexanone	10.955	43	17680	8.26	ug/l #	23
73) Isopropylbenzene	12.479	105	43134	3.10	ug/l	93
74) N-amyl acetate	12.267	43	125385	43.32	ug/l #	36
75) 1,1,2,2-Tetrachloroethane	12.708	83	29182	13.18	ug/l #	63
76) 1,2,3-Trichloropropane	12.632	75	123358	76.24	ug/l #	100
78) n-propylbenzene	12.820	91	91396	5.55	ug/l	96
80) 1,3,5-Trimethylbenzene	12.961	105	49538	4.27	ug/l	98
81) trans-1,4-Dichloro-2-b...	12.632	75	123358	154.28	ug/l #	19
82) 4-Chlorotoluene	12.961	91	11521	1.20	ug/l #	64
84) 1,2,4-Trimethylbenzene	13.267	105	202590	17.60	ug/l	98
85) sec-Butylbenzene	13.402	105	84451	6.14	ug/l #	75
86) p-Isopropyltoluene	13.514	119	43552	3.48	ug/l	95
89) n-Butylbenzene	13.843	91	73367	6.12	ug/l #	72
90) Hexachloroethane	14.114	117	15268	6.76	ug/l #	10
92) 1,2-Dibromo-3-Chloropr...	14.526	75	877	2.42	ug/l #	1
95) Naphthalene	15.396	128	111725	17.68	ug/l	97
96) 1,2,3-Trichlorobenzene	15.614	180	4888	1.72	ug/l #	12

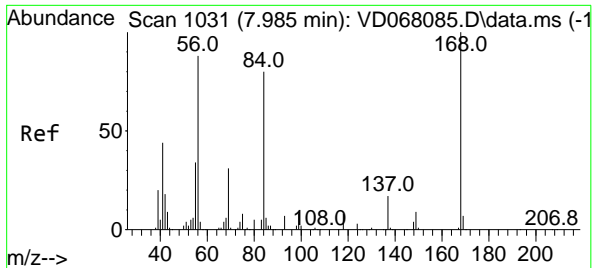
(#) = qualifier out of range (m) = manual integration (+) = signals summed

Data Path : Z:\voasrv\HPCHEM1\MSVOA_D\Data\VD020521\
 Data File : VD068304.D
 Acq On : 05 Feb 2021 16:47
 Operator : VA/SY
 Sample : M1317-01RE
 Misc : 7.86G/5.00ml/MSVOA_D/SOIL
 ALS Vial : 12 Sample Multiplier: 1

Instrument :
 MSVOA_D
 Client Sampled :
 R-ARE

Quant Time: Feb 05 21:43:22 2021
 Quant Method : Z:\voasrv\HPCHEM1\MSVOA_D\Method\82D011921S.M
 Quant Title : SW846 8260
 QLast Update : Tue Jan 19 13:19:08 2021
 Response via : Initial Calibration

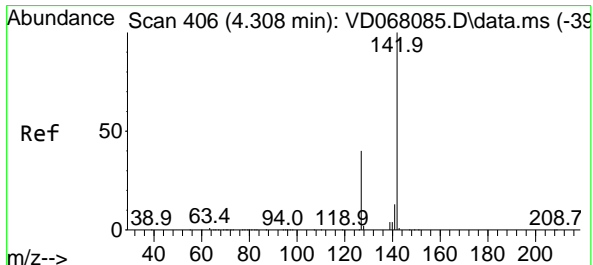
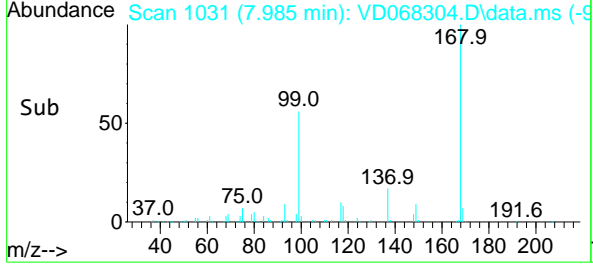
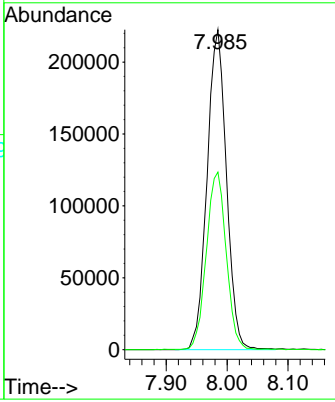
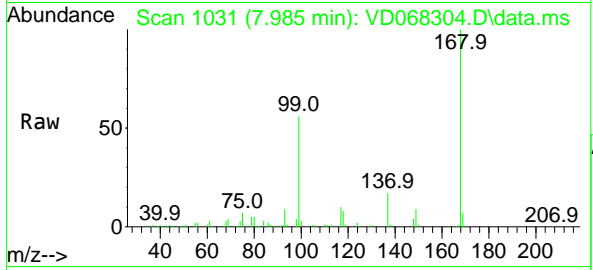




#1
 Pentafluorobenzene
 Concen: 50.00 ug/l
 RT: 7.985 min Scan# 1031
 Delta R.T. -0.000 min
 Lab File: VD068304.D
 Acq: 05 Feb 2021 16:47

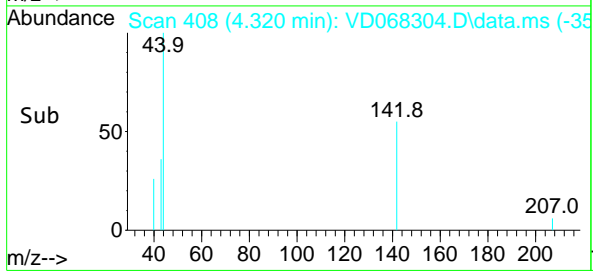
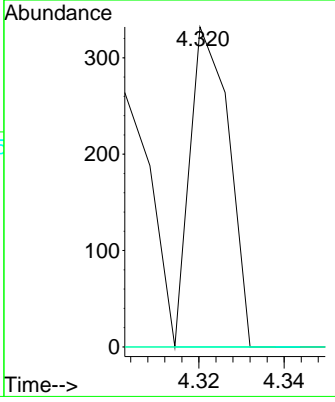
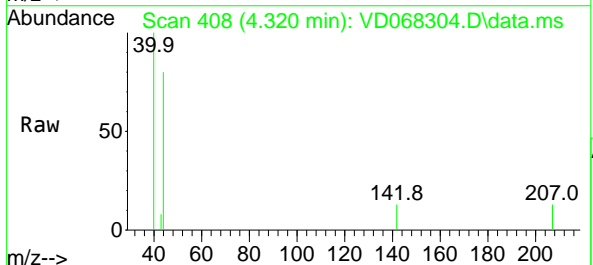
Instrument :
 MSVOA_D
 ClientSampled :
 R-ARE

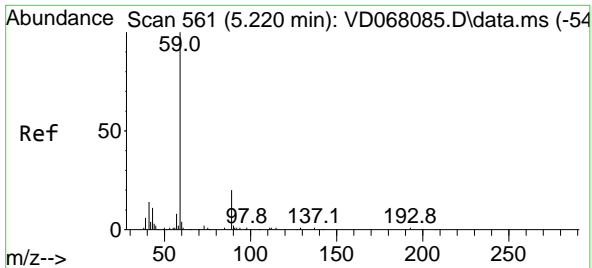
Tgt Ion:168 Resp: 491674
 Ion Ratio Lower Upper
 168 100
 99 55.4 43.5 65.3



#10
 Methyl Iodide
 Concen: 3.19 ug/l
 RT: 4.320 min Scan# 408
 Delta R.T. 0.012 min
 Lab File: VD068304.D
 Acq: 05 Feb 2021 16:47

Tgt Ion:142 Resp: 210
 Ion Ratio Lower Upper
 142 100
 127 0.0 37.9 56.9#
 141 0.0 11.5 17.3#

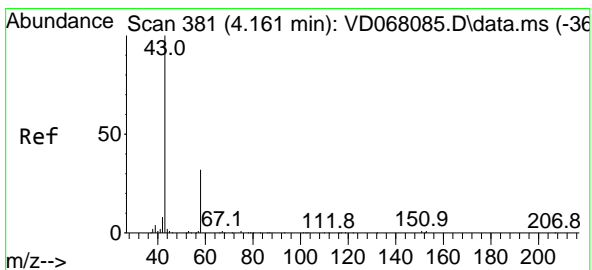
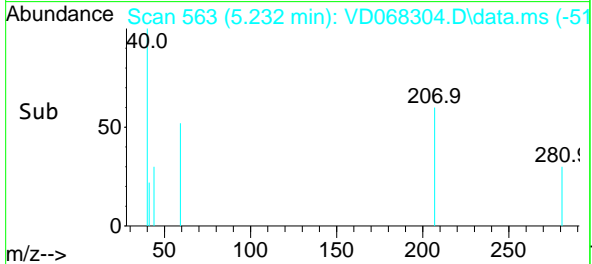
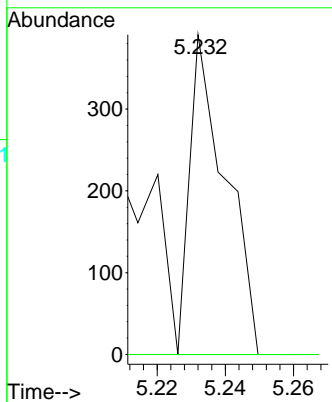
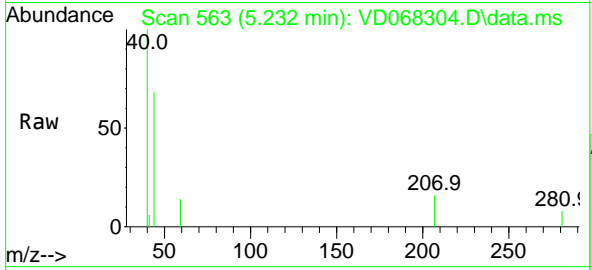




#11
 Tert butyl alcohol
 Concen: Below Cal
 RT: 5.232 min Scan# 563
 Delta R.T. 0.012 min
 Lab File: VD068304.D
 Acq: 05 Feb 2021 16:47

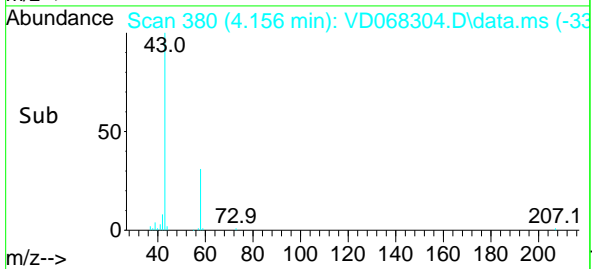
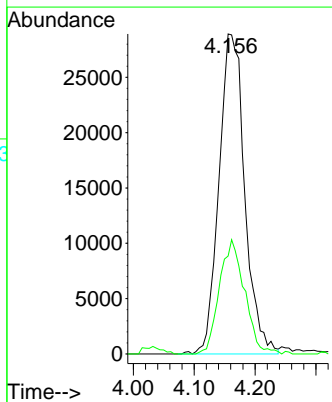
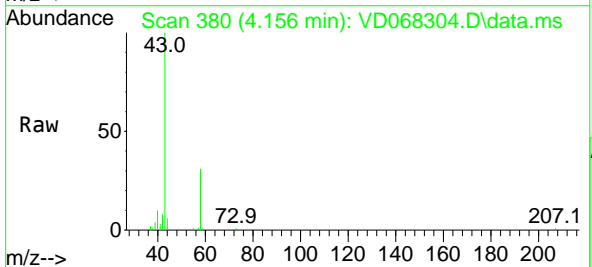
Instrument :
 MSVOA_D
 ClientSampled :
 R-ARE

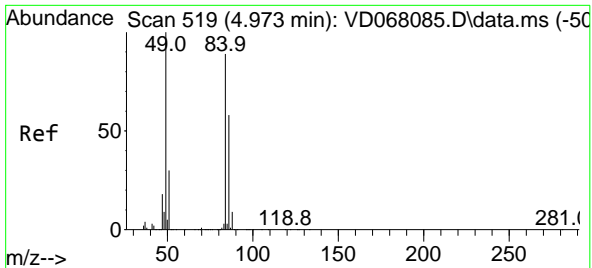
Tgt Ion: 59 Resp: 287
 Ion Ratio Lower Upper
 59 100
 57 0.0 7.4 11.2#



#16
 Acetone
 Concen: 101.05 ug/l
 RT: 4.156 min Scan# 380
 Delta R.T. -0.006 min
 Lab File: VD068304.D
 Acq: 05 Feb 2021 16:47

Tgt Ion: 43 Resp: 84860
 Ion Ratio Lower Upper
 43 100
 58 30.6 24.2 36.4



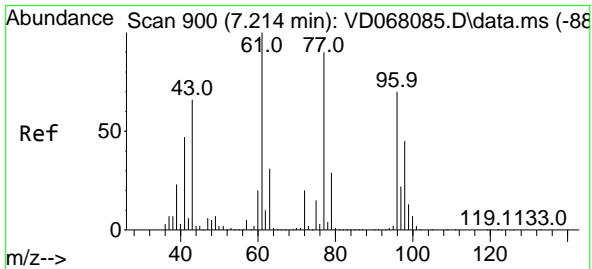
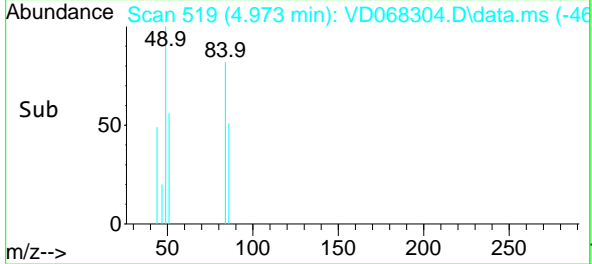
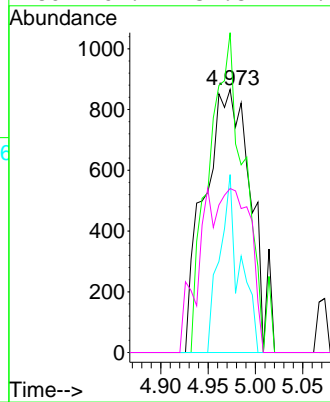
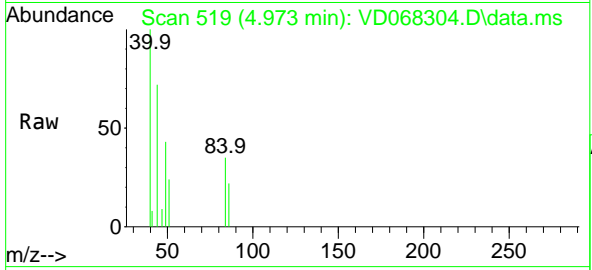


#20
 Methylene Chloride
 Concen: Below Cal
 RT: 4.973 min Scan# 519
 Delta R.T. 0.000 min
 Lab File: VD068304.D
 Acq: 05 Feb 2021 16:47

Instrument :
 MSVOA_D
 ClientSampled :
 R-ARE

Tgt Ion: 84 Resp: 2976

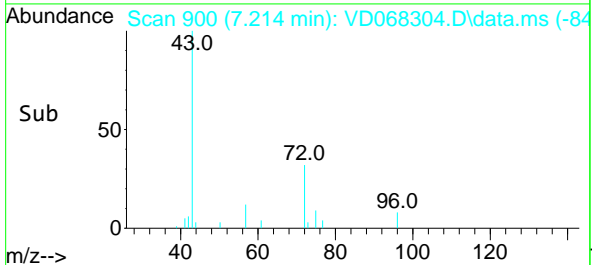
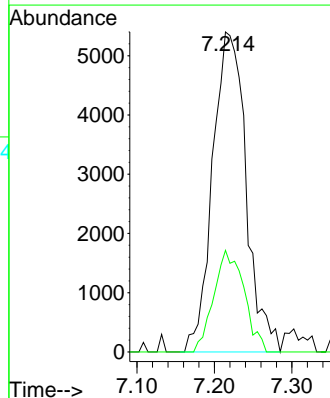
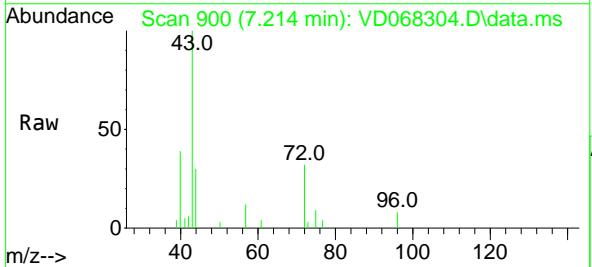
Ion	Ratio	Lower	Upper
84	100		
49	121.6	77.4	116.2#
51	67.7	26.1	39.1#
86	62.4	51.8	77.8

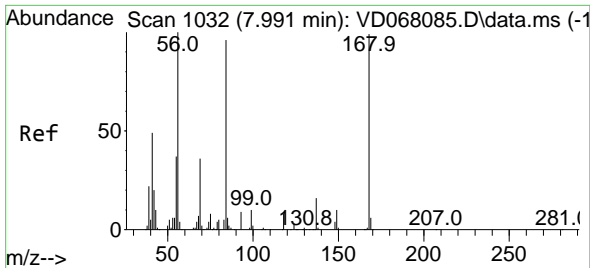


#25
 2-Butanone
 Concen: 12.84 ug/l
 RT: 7.214 min Scan# 900
 Delta R.T. 0.000 min
 Lab File: VD068304.D
 Acq: 05 Feb 2021 16:47

Tgt Ion: 43 Resp: 16240

Ion	Ratio	Lower	Upper
43	100		
72	31.8	25.1	37.7

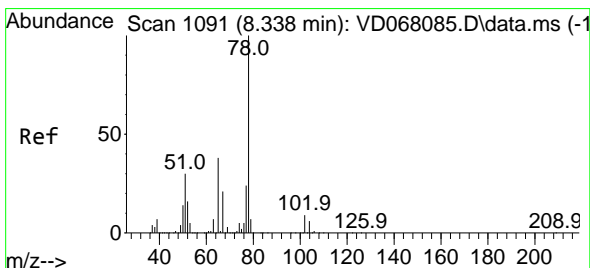
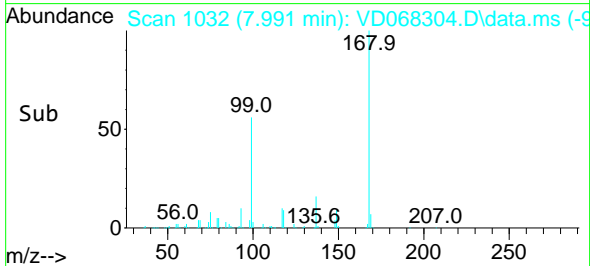
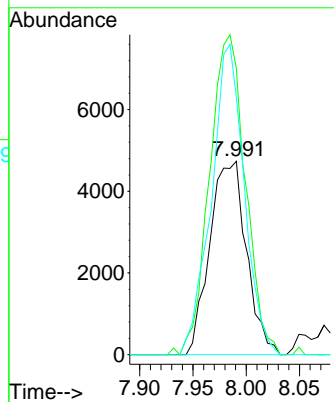
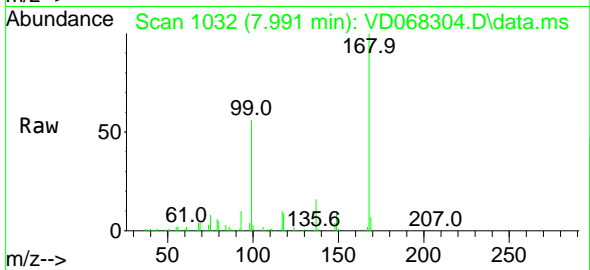




#31
 Cyclohexane
 Concen: 1.11 ug/l
 RT: 7.991 min Scan# 1032
 Delta R.T. 0.000 min
 Lab File: VD068304.D
 Acq: 05 Feb 2021 16:47

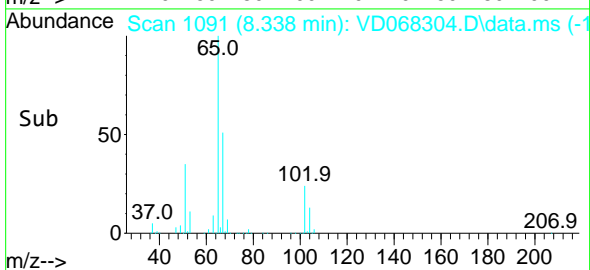
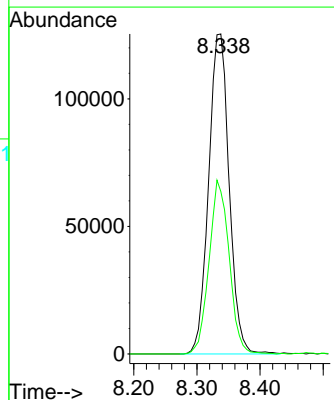
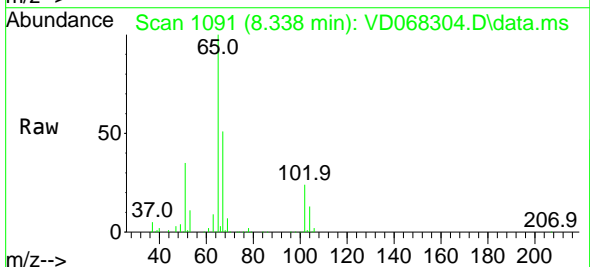
Instrument :
 MSVOA_D
 ClientSampled :
 R-ARE

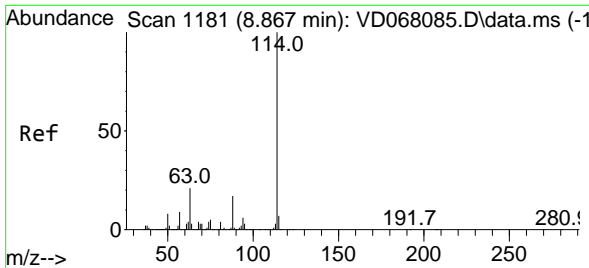
Tgt Ion: 56 Resp: 11334
 Ion Ratio Lower Upper
 56 100
 69 148.0 30.1 45.1#
 84 133.1 82.1 123.1#



#33
 1,2-Dichloroethane-d4
 Concen: 60.18 ug/l
 RT: 8.338 min Scan# 1091
 Delta R.T. 0.000 min
 Lab File: VD068304.D
 Acq: 05 Feb 2021 16:47

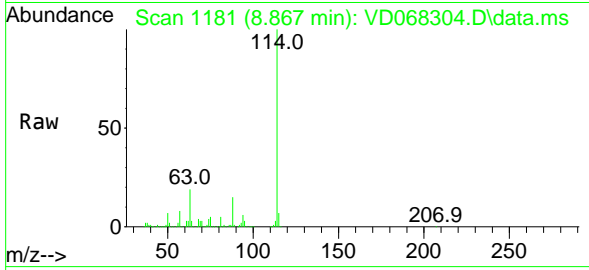
Tgt Ion: 65 Resp: 283063
 Ion Ratio Lower Upper
 65 100
 67 53.2 0.0 105.0





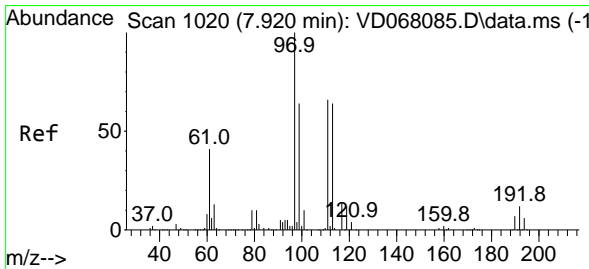
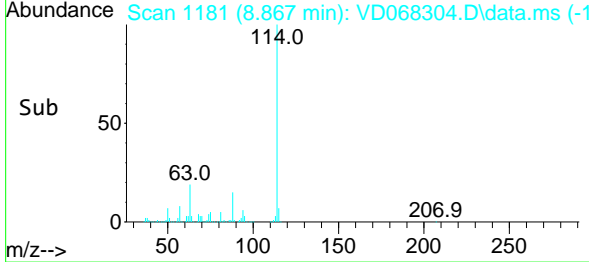
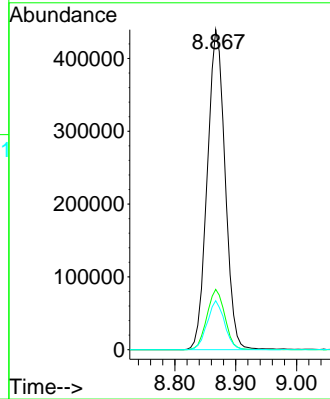
#34
 1,4-Difluorobenzene
 Concen: 50.00 ug/l
 RT: 8.867 min Scan# 1181
 Delta R.T. 0.000 min
 Lab File: VD068304.D
 Acq: 05 Feb 2021 16:47

Instrument :
 MSVOA_D
 ClientSampled :
 R-ARE

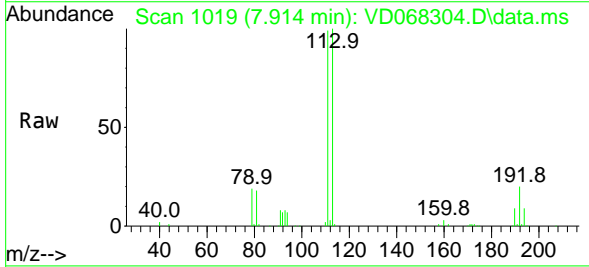


Tgt Ion:114 Resp: 893964

Ion	Ratio	Lower	Upper
114	100		
63	18.8	0.0	34.8
88	15.3	0.0	31.6

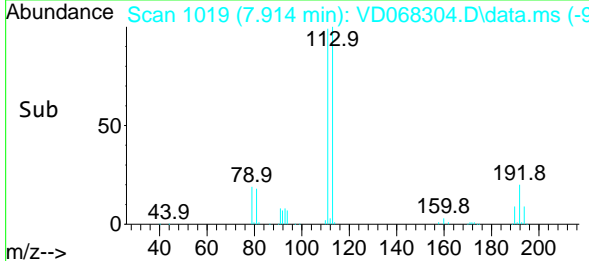
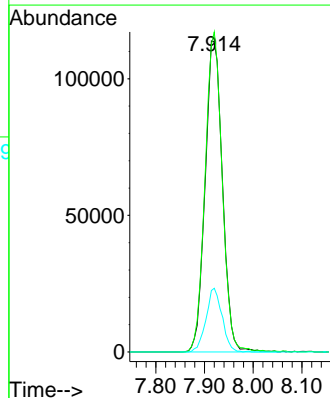


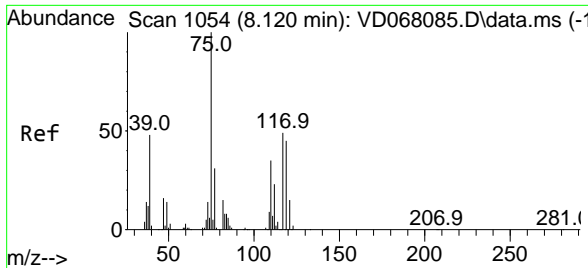
#35
 Dibromofluoromethane
 Concen: 56.96 ug/l
 RT: 7.914 min Scan# 1019
 Delta R.T. -0.006 min
 Lab File: VD068304.D
 Acq: 05 Feb 2021 16:47



Tgt Ion:113 Resp: 281520

Ion	Ratio	Lower	Upper
113	100		
111	101.4	81.4	122.0
192	18.9	16.1	24.1

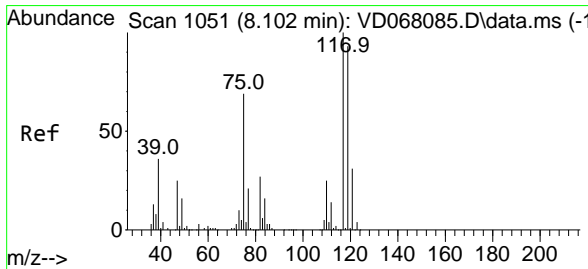
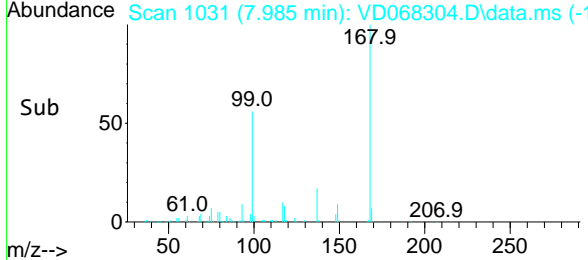
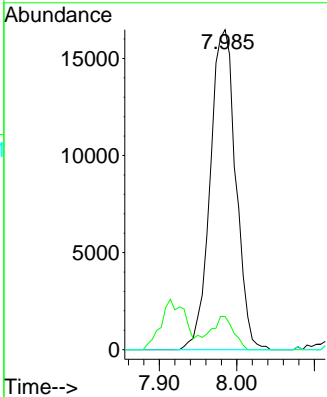
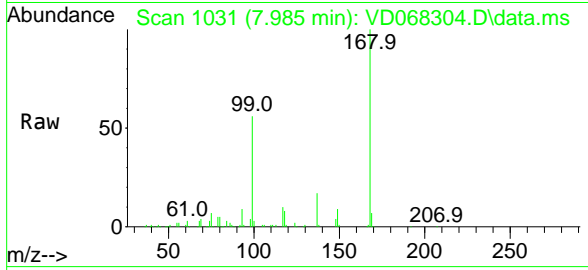




#36
 1,1-Dichloropropene
 Concen: 4.20 ug/l
 RT: 7.985 min Scan# 1031
 Delta R.T. -0.135 min
 Lab File: VD068304.D
 Acq: 05 Feb 2021 16:47

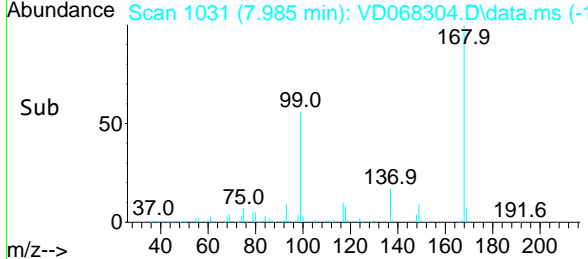
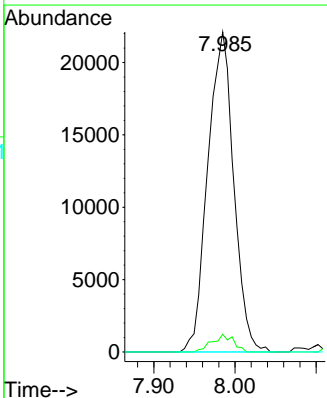
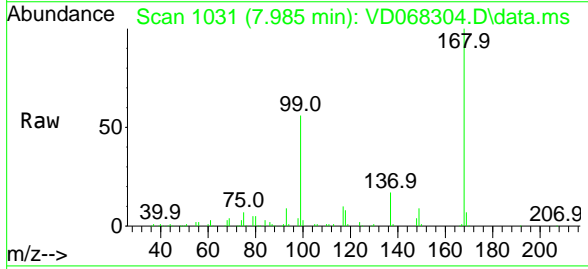
Instrument :
 MSVOA_D
 ClientSampled :
 R-ARE

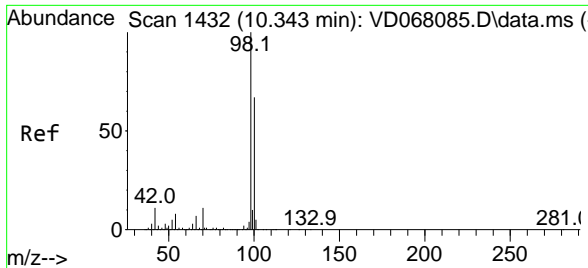
Tgt Ion	Resp	Lower	Upper
75	37884		
110	8.8	19.4	58.2#
77	0.0	25.3	37.9#



#38
 Carbon Tetrachloride
 Concen: 5.82 ug/l
 RT: 7.985 min Scan# 1031
 Delta R.T. -0.118 min
 Lab File: VD068304.D
 Acq: 05 Feb 2021 16:47

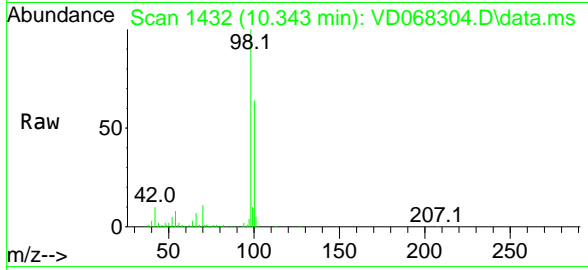
Tgt Ion	Resp	Lower	Upper
117	49104		
119	5.6	77.3	115.9#
121	0.0	24.7	37.1#



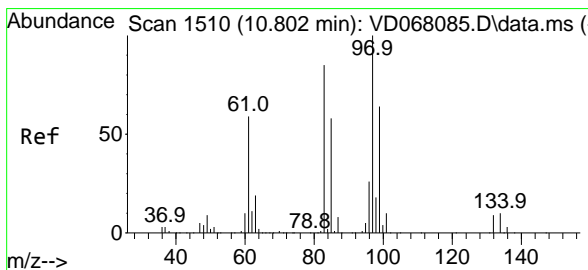
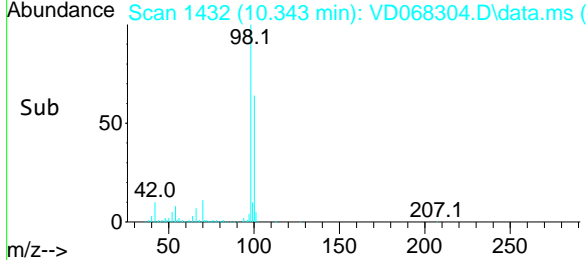
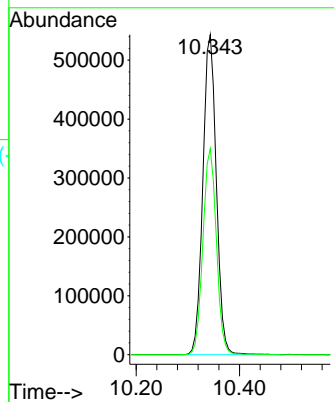


#50
 Toluene-d8
 Concen: 49.71 ug/l
 RT: 10.343 min Scan# 1432
 Delta R.T. 0.000 min
 Lab File: VD068304.D
 Acq: 05 Feb 2021 16:47

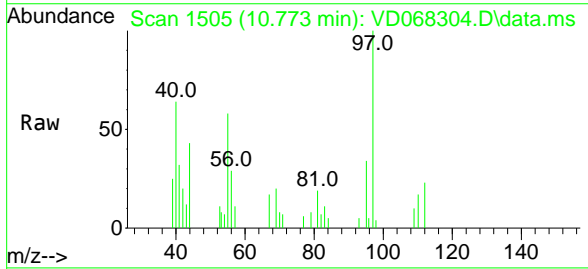
Instrument :
 MSVOA_D
 ClientSampled :
 R-ARE



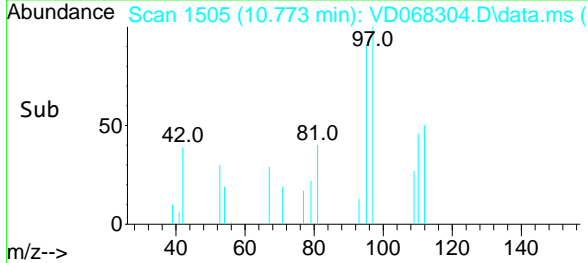
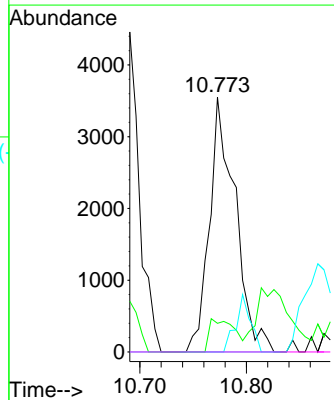
Tgt Ion: 98 Resp: 982682
 Ion Ratio Lower Upper
 98 100
 100 64.3 53.0 79.4

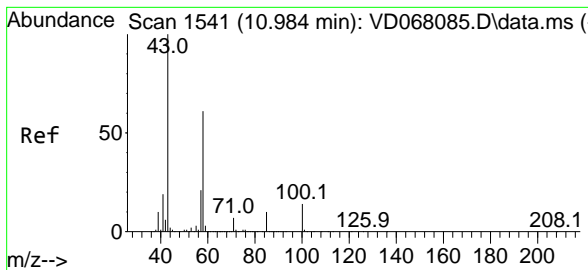


#55
 1,1,2-Trichloroethane
 Concen: 1.35 ug/l
 RT: 10.773 min Scan# 1505
 Delta R.T. -0.029 min
 Lab File: VD068304.D
 Acq: 05 Feb 2021 16:47



Tgt Ion: 97 Resp: 5993
 Ion Ratio Lower Upper
 97 100
 83 11.2 61.8 92.6#
 85 0.0 42.2 63.2#
 99 0.0 48.3 72.5#

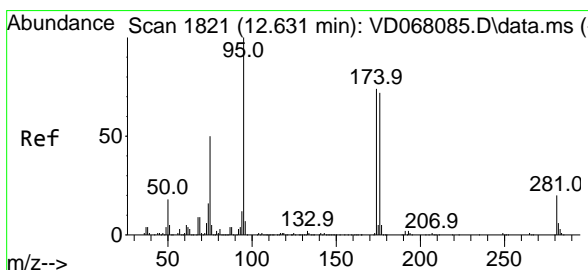
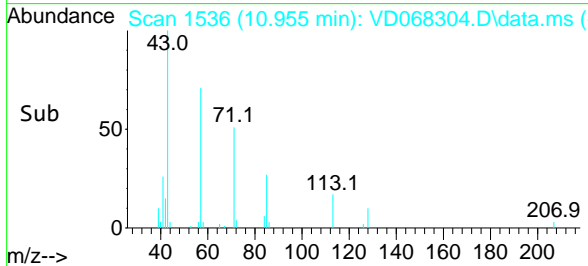
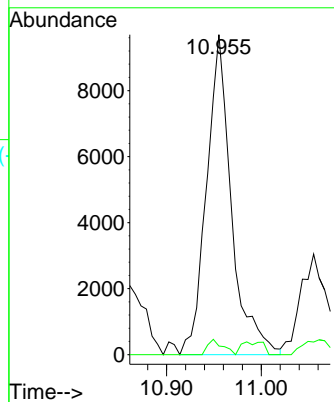
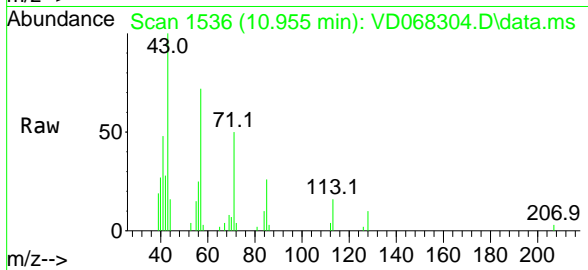




#59
 2-Hexanone
 Concen: 8.26 ug/l
 RT: 10.955 min Scan# 1536
 Delta R.T. -0.029 min
 Lab File: VD068304.D
 Acq: 05 Feb 2021 16:47

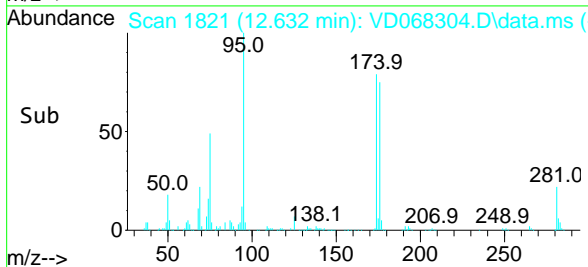
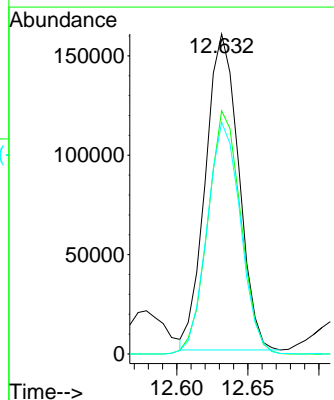
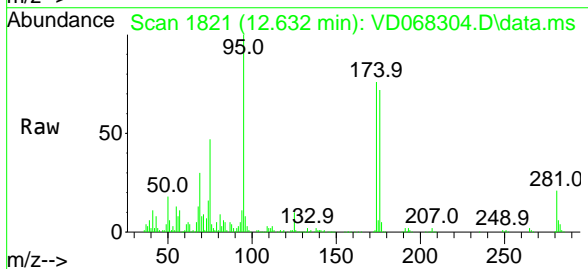
Instrument :
 MSVOA_D
 ClientSampled :
 R-ARE

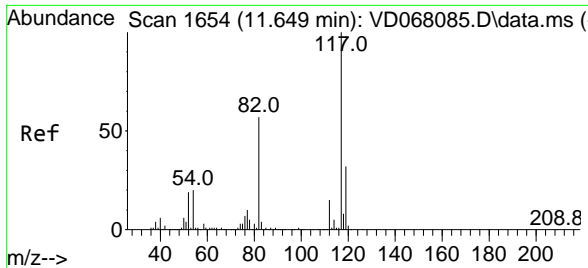
Tgt Ion: 43 Resp: 17680
 Ion Ratio Lower Upper
 43 100
 58 2.9 31.0 93.0#



#62
 4-Bromofluorobenzene
 Concen: 36.38 ug/l
 RT: 12.632 min Scan# 1821
 Delta R.T. 0.000 min
 Lab File: VD068304.D
 Acq: 05 Feb 2021 16:47

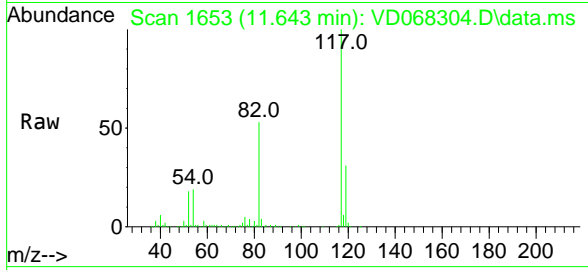
Tgt Ion: 95 Resp: 259017
 Ion Ratio Lower Upper
 95 100
 174 76.4 0.0 172.4
 176 73.8 0.0 168.4





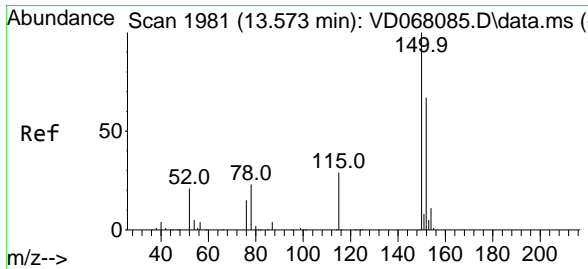
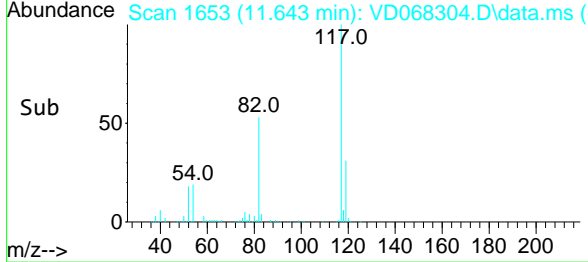
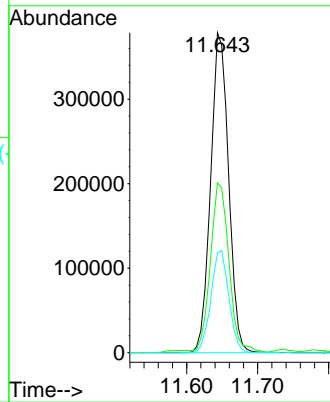
#63
 Chlorobenzene-d5
 Concen: 50.00 ug/l
 RT: 11.643 min Scan# 1653
 Delta R.T. -0.006 min
 Lab File: VD068304.D
 Acq: 05 Feb 2021 16:47

Instrument :
 MSVOA_D
 ClientSampled :
 R-ARE

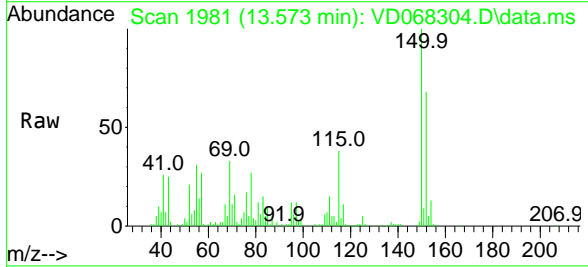


Tgt Ion:117 Resp: 663812

Ion	Ratio	Lower	Upper
117	100		
82	52.4	41.4	62.0
119	31.2	26.1	39.1

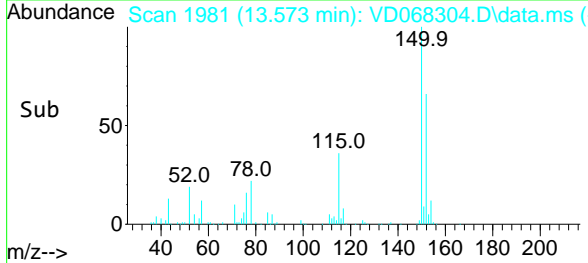
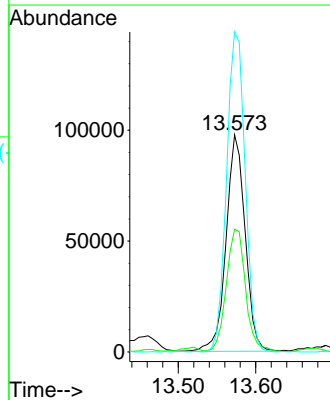


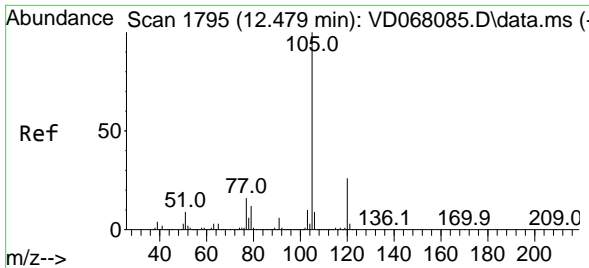
#72
 1,4-Dichlorobenzene-d4
 Concen: 50.00 ug/l
 RT: 13.573 min Scan# 1981
 Delta R.T. 0.000 min
 Lab File: VD068304.D
 Acq: 05 Feb 2021 16:47



Tgt Ion:152 Resp: 167334

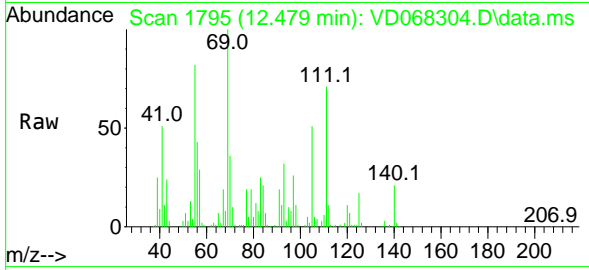
Ion	Ratio	Lower	Upper
152	100		
115	56.8	28.9	86.8
150	144.1	0.0	344.4



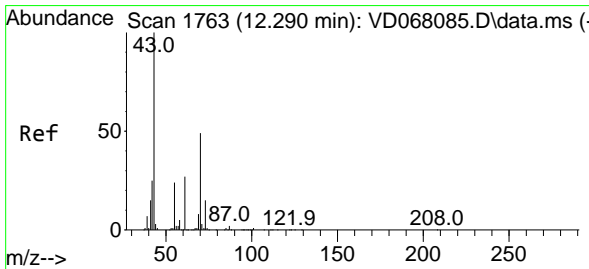
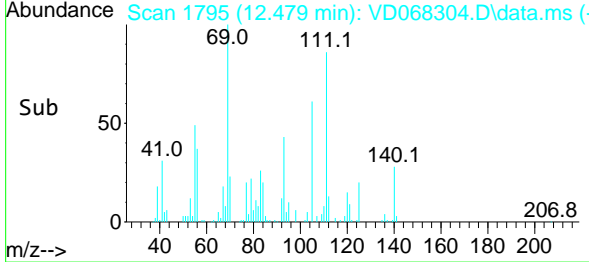
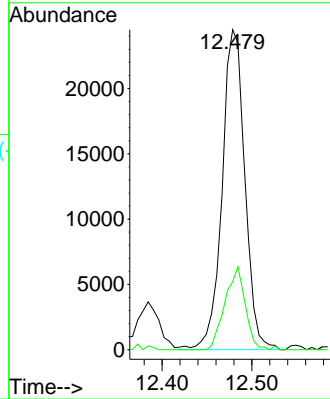


#73
 Isopropylbenzene
 Concen: 3.10 ug/l
 RT: 12.479 min Scan# 1795
 Delta R.T. 0.000 min
 Lab File: VD068304.D
 Acq: 05 Feb 2021 16:47

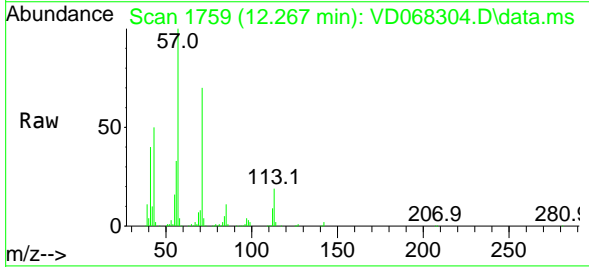
Instrument :
 MSVOA_D
 ClientSampled :
 R-ARE



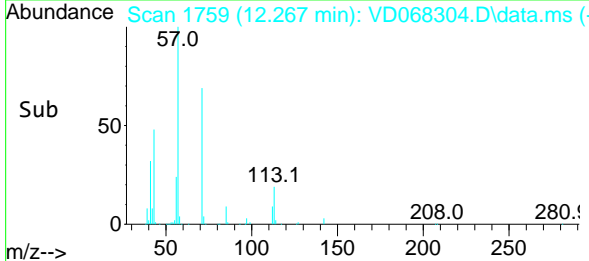
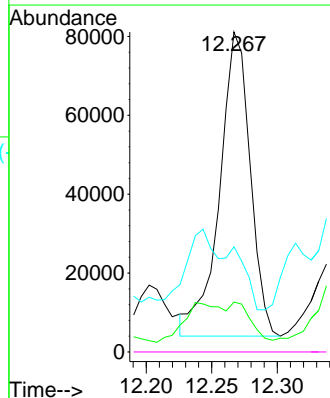
Tgt Ion:105 Resp: 43134
 Ion Ratio Lower Upper
 105 100
 120 23.0 13.2 39.6

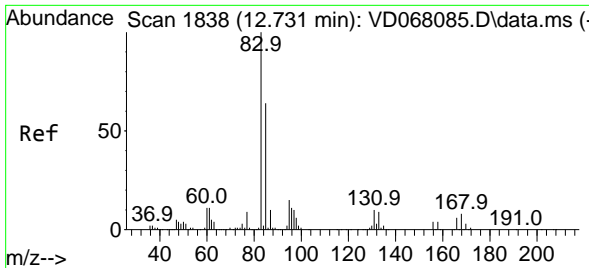


#74
 N-amy1 acetate
 Concen: 43.32 ug/l
 RT: 12.267 min Scan# 1759
 Delta R.T. -0.023 min
 Lab File: VD068304.D
 Acq: 05 Feb 2021 16:47



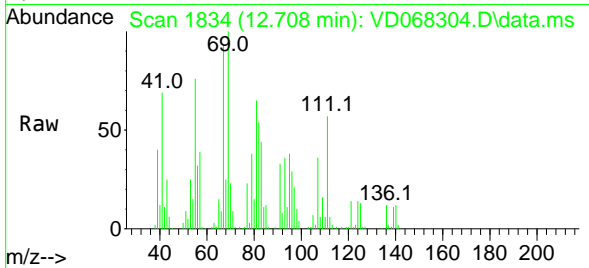
Tgt Ion: 43 Resp: 125385
 Ion Ratio Lower Upper
 43 100
 70 0.0 41.8 62.8#
 55 0.0 24.2 36.4#
 61 0.0 21.7 32.5#



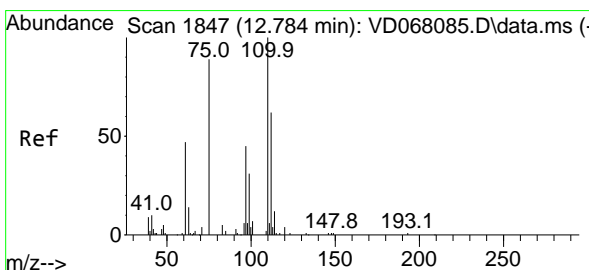
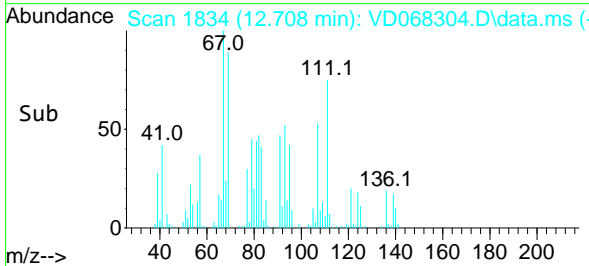
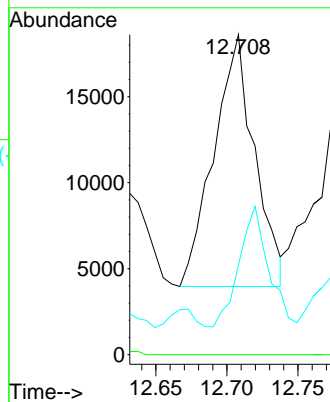


#75
 1,1,2,2-Tetrachloroethane
 Concen: 13.18 ug/l
 RT: 12.708 min Scan# 1834
 Delta R.T. -0.023 min
 Lab File: VD068304.D
 Acq: 05 Feb 2021 16:47

Instrument :
 MSVOA_D
 ClientSampled :
 R-ARE

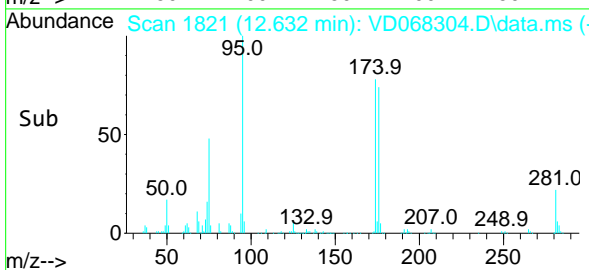
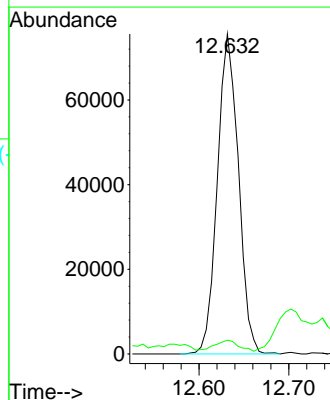
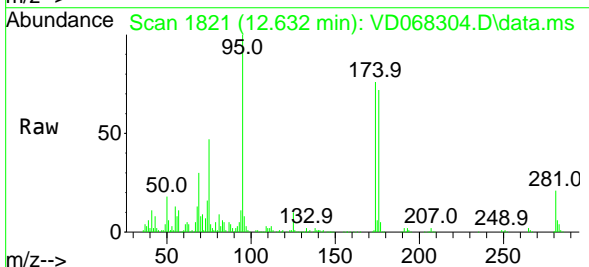


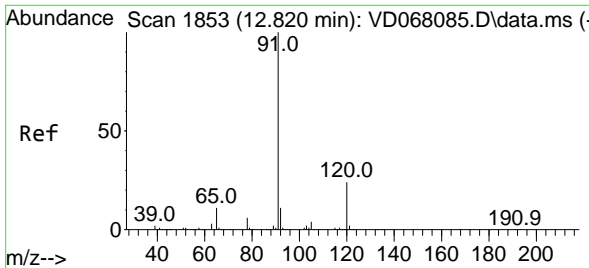
Tgt Ion: 83 Resp: 29182
 Ion Ratio Lower Upper
 83 100
 131 0.0 5.8 17.4#
 85 34.5 32.4 97.2



#76
 1,2,3-Trichloropropane
 Concen: 76.24 ug/l
 RT: 12.632 min Scan# 1821
 Delta R.T. -0.153 min
 Lab File: VD068304.D
 Acq: 05 Feb 2021 16:47

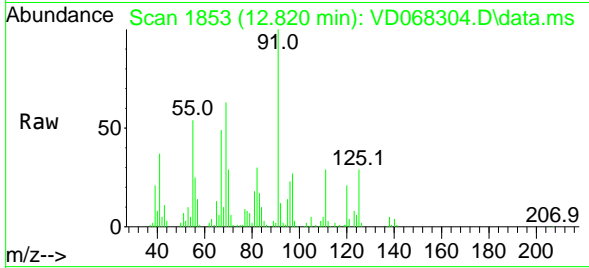
Tgt Ion: 75 Resp: 123358
 Ion Ratio Lower Upper
 75 100
 77 3.7 0.0 0.0#



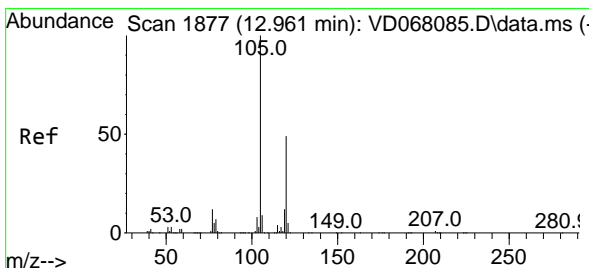
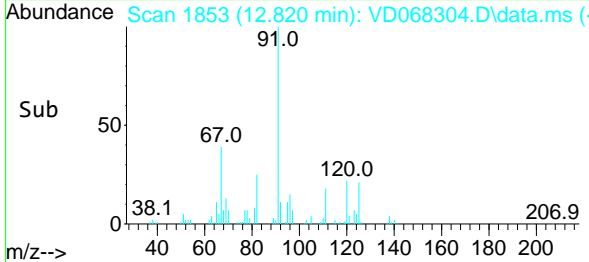
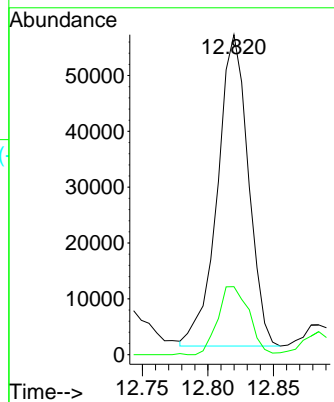


#78
 n-propylbenzene
 Concen: 5.55 ug/l
 RT: 12.820 min Scan# 1853
 Delta R.T. 0.000 min
 Lab File: VD068304.D
 Acq: 05 Feb 2021 16:47

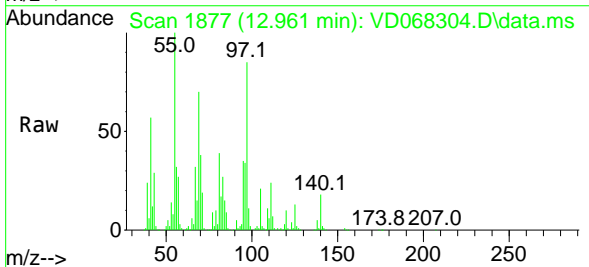
Instrument :
 MSVOA_D
 ClientSampled :
 R-ARE



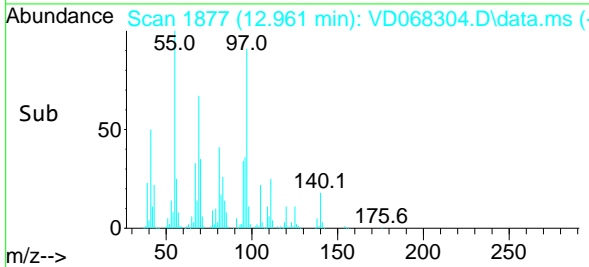
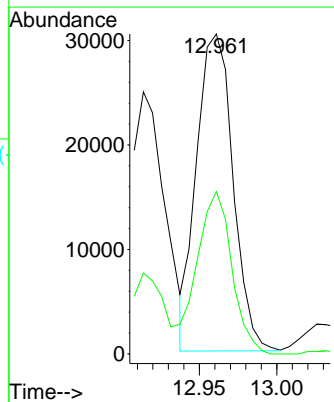
Tgt Ion: 91 Resp: 91396
 Ion Ratio Lower Upper
 91 100
 120 22.1 12.0 36.0

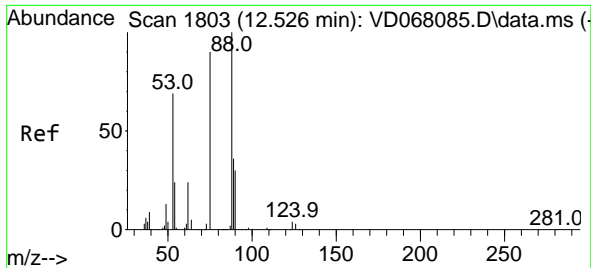


#80
 1,3,5-Trimethylbenzene
 Concen: 4.27 ug/l
 RT: 12.961 min Scan# 1877
 Delta R.T. 0.000 min
 Lab File: VD068304.D
 Acq: 05 Feb 2021 16:47



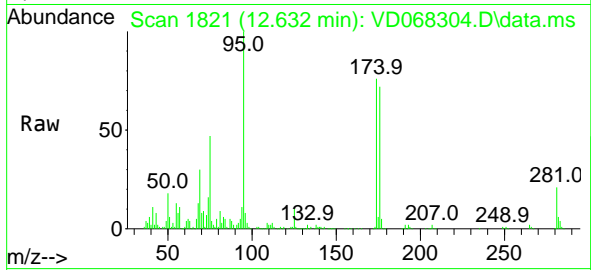
Tgt Ion: 105 Resp: 49538
 Ion Ratio Lower Upper
 105 100
 120 49.9 24.2 72.6



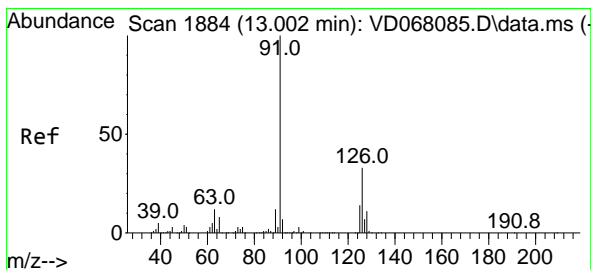
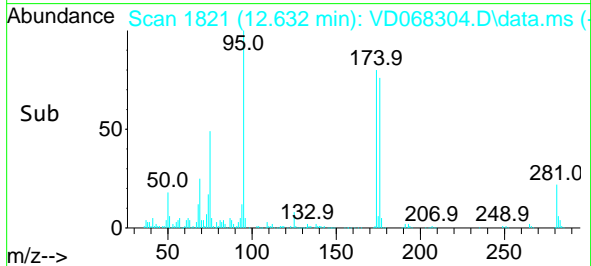
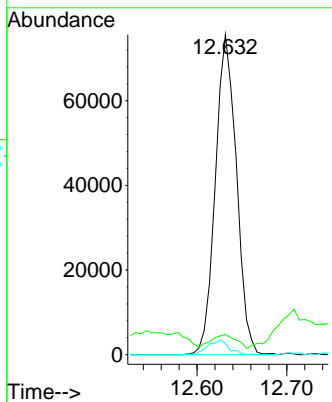


#81
 trans-1,4-Dichloro-2-butene
 Concen: 154.28 ug/l
 RT: 12.632 min Scan# 1821
 Delta R.T. 0.106 min
 Lab File: VD068304.D
 Acq: 05 Feb 2021 16:47

Instrument :
 MSVOA_D
 ClientSampled :
 R-ARE

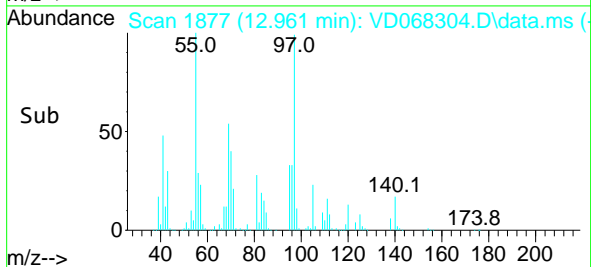
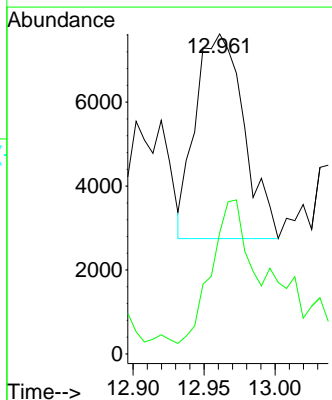
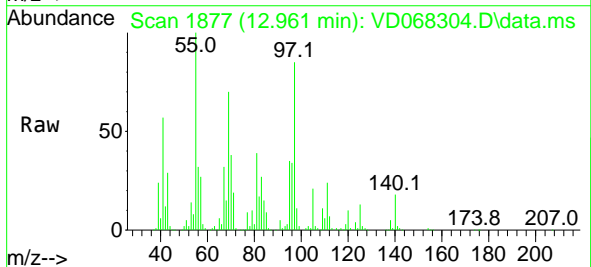


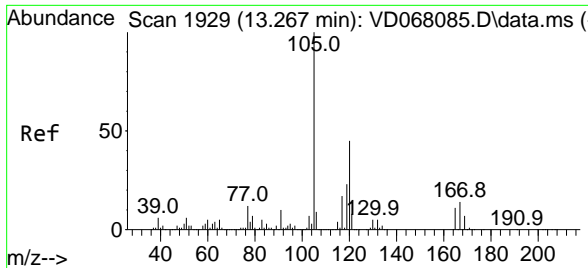
Tgt Ion: 75 Resp: 123358
 Ion Ratio Lower Upper
 75 100
 53 5.0 70.2 105.2#
 89 4.6 40.3 60.5#



#82
 4-Chlorotoluene
 Concen: 1.20 ug/l
 RT: 12.961 min Scan# 1877
 Delta R.T. -0.041 min
 Lab File: VD068304.D
 Acq: 05 Feb 2021 16:47

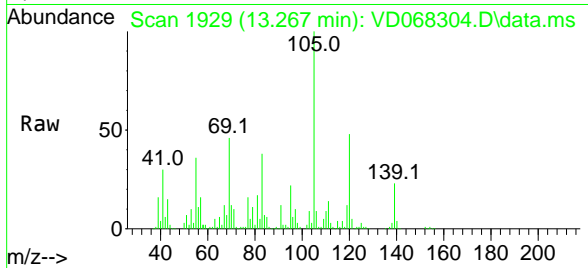
Tgt Ion: 91 Resp: 11521
 Ion Ratio Lower Upper
 91 100
 126 56.1 17.7 53.1#



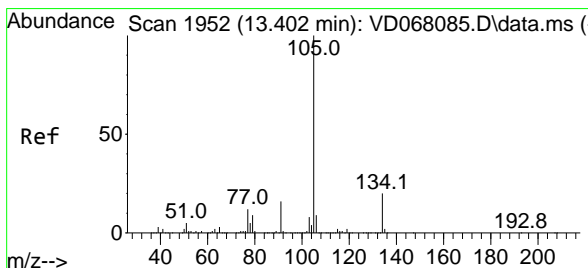
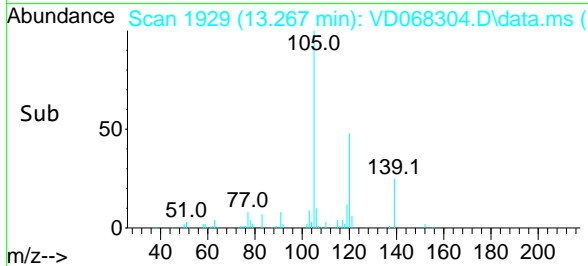
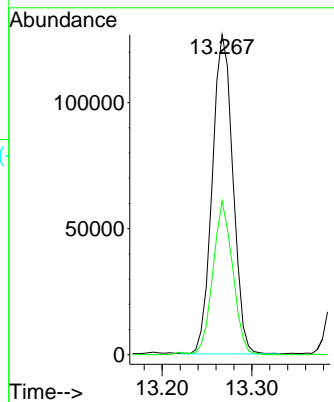


#84
 1,2,4-Trimethylbenzene
 Concen: 17.60 ug/l
 RT: 13.267 min Scan# 1929
 Delta R.T. 0.000 min
 Lab File: VD068304.D
 Acq: 05 Feb 2021 16:47

Instrument :
 MSVOA_D
 ClientSampled :
 R-ARE

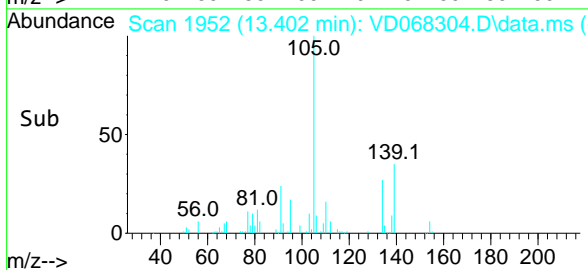
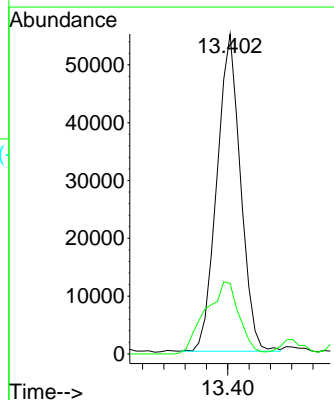
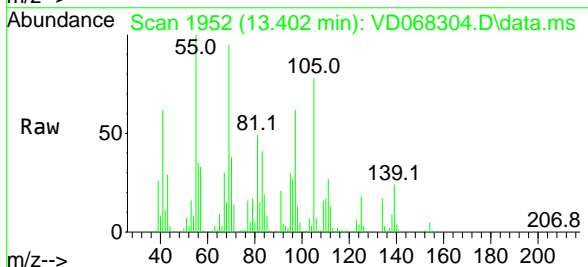


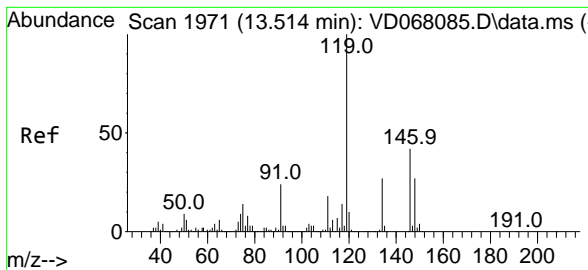
Tgt Ion:105 Resp: 202590
 Ion Ratio Lower Upper
 105 100
 120 46.0 22.4 67.0



#85
 sec-Butylbenzene
 Concen: 6.14 ug/l
 RT: 13.402 min Scan# 1952
 Delta R.T. 0.000 min
 Lab File: VD068304.D
 Acq: 05 Feb 2021 16:47

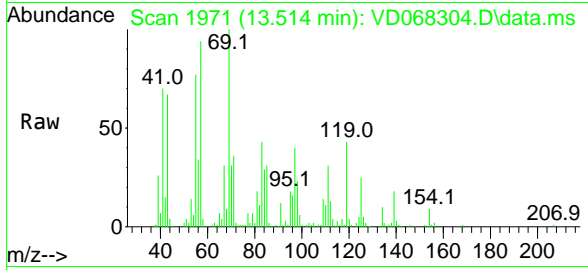
Tgt Ion:105 Resp: 84451
 Ion Ratio Lower Upper
 105 100
 134 32.4 10.3 30.9#





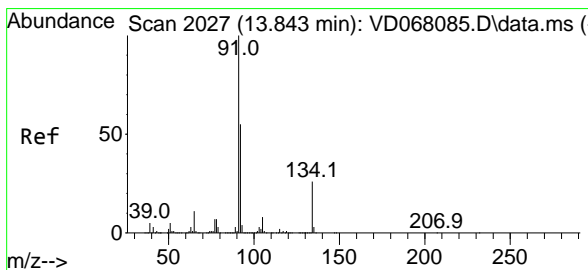
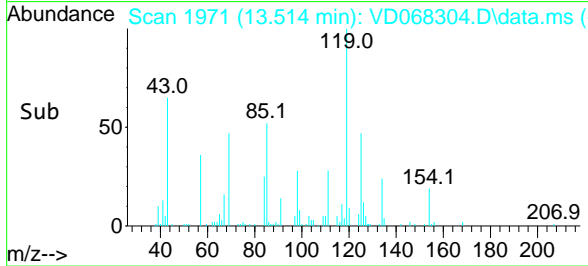
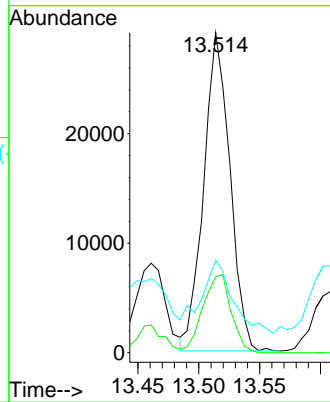
#86
 p-Isopropyltoluene
 Concen: 3.48 ug/l
 RT: 13.514 min Scan# 1971
 Delta R.T. 0.000 min
 Lab File: VD068304.D
 Acq: 05 Feb 2021 16:47

Instrument :
 MSVOA_D
 ClientSampled :
 R-ARE

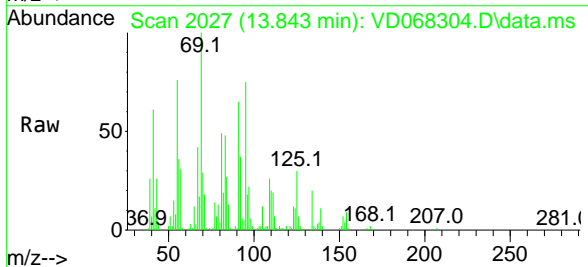


Tgt Ion:119 Resp: 43552

Ion	Ratio	Lower	Upper
119	100		
134	26.5	12.9	38.7
91	27.4	11.7	35.0

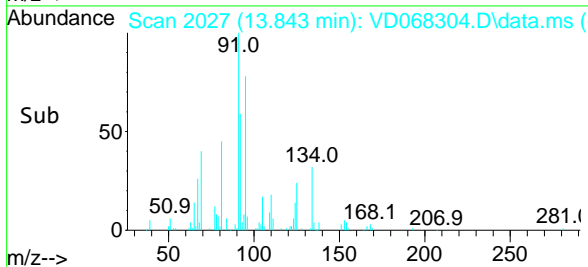
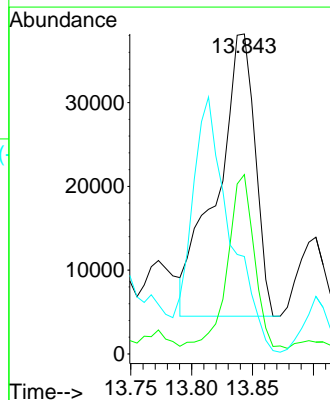


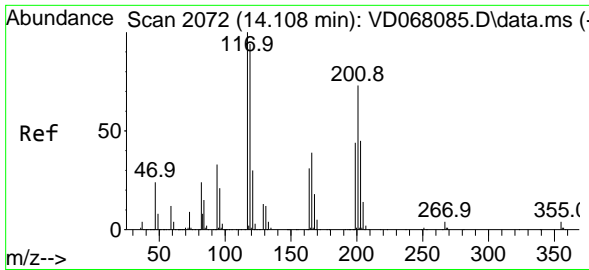
#89
 n-Butylbenzene
 Concen: 6.12 ug/l
 RT: 13.843 min Scan# 2027
 Delta R.T. 0.000 min
 Lab File: VD068304.D
 Acq: 05 Feb 2021 16:47



Tgt Ion: 91 Resp: 73367

Ion	Ratio	Lower	Upper
91	100		
92	43.2	27.2	81.6
134	0.0	13.9	41.7#

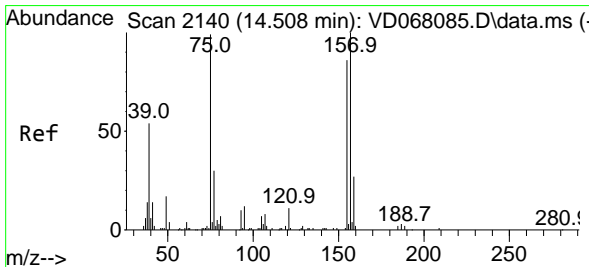
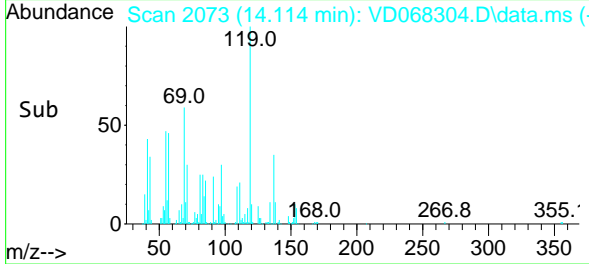
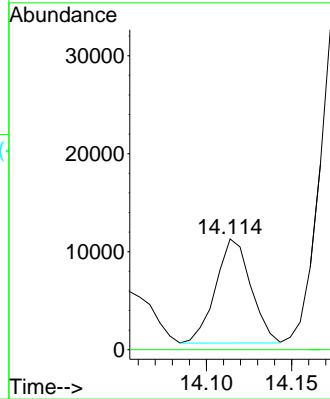
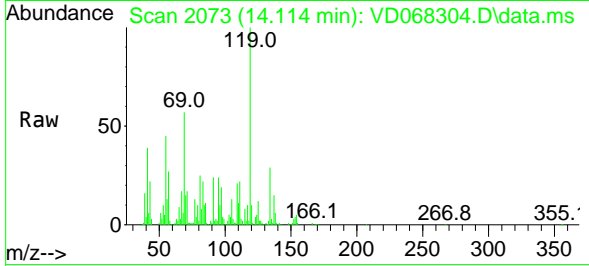




#90
 Hexachloroethane
 Concen: 6.76 ug/l
 RT: 14.114 min Scan# 2073
 Delta R.T. 0.006 min
 Lab File: VD068304.D
 Acq: 05 Feb 2021 16:47

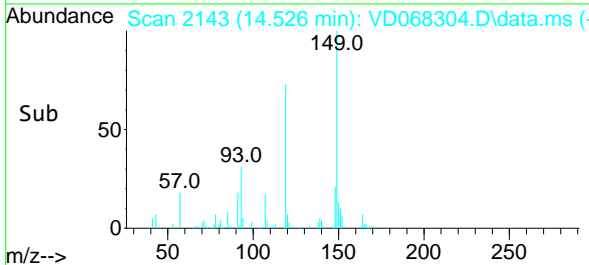
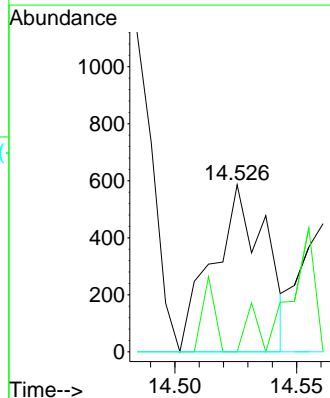
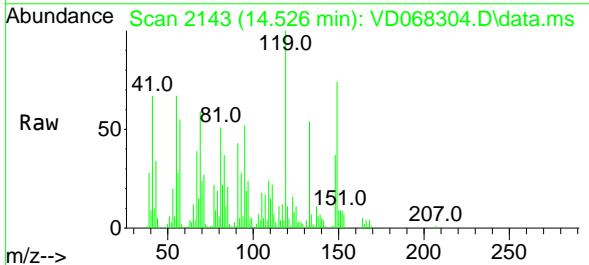
Instrument :
 MSVOA_D
 ClientSampled :
 R-ARE

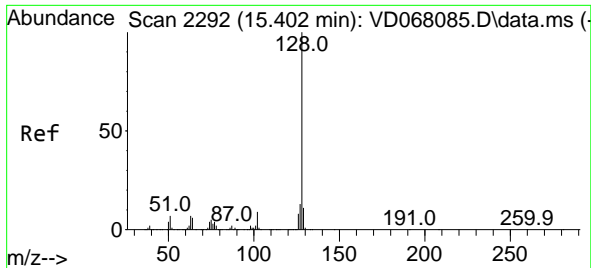
Tgt Ion:117 Resp: 15268
 Ion Ratio Lower Upper
 117 100
 201 0.0 39.5 118.5#



#92
 1,2-Dibromo-3-Chloropropane
 Concen: 2.42 ug/l
 RT: 14.526 min Scan# 2143
 Delta R.T. 0.018 min
 Lab File: VD068304.D
 Acq: 05 Feb 2021 16:47

Tgt Ion: 75 Resp: 877
 Ion Ratio Lower Upper
 75 100
 155 0.0 48.0 144.2#
 157 0.0 65.0 194.8#

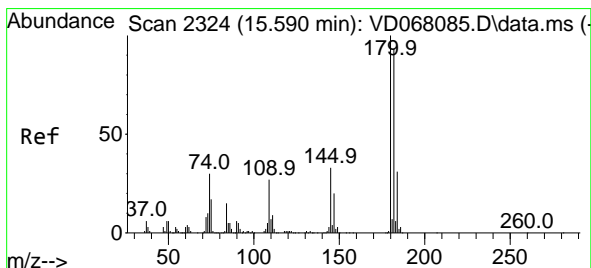
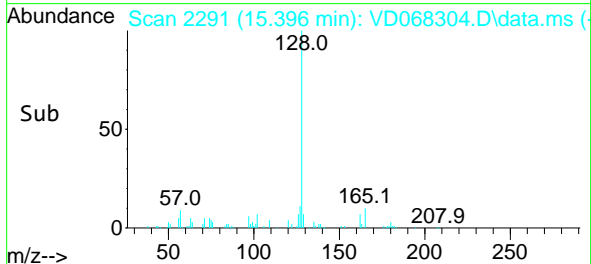
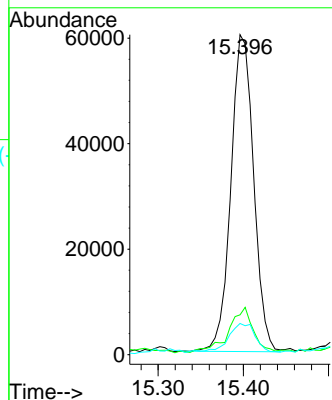
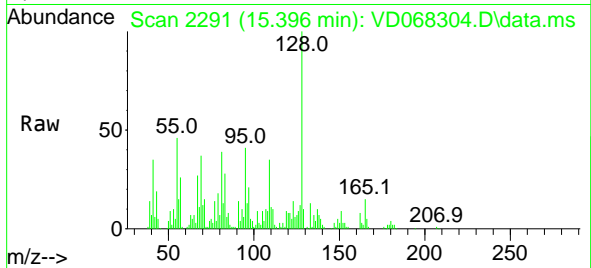




#95
 Naphthalene
 Concen: 17.68 ug/l
 RT: 15.396 min Scan# 2291
 Delta R.T. -0.006 min
 Lab File: VD068304.D
 Acq: 05 Feb 2021 16:47

Instrument :
 MSVOA_D
 ClientSampled :
 R-ARE

Tgt Ion:128 Resp: 111725
 Ion Ratio Lower Upper
 128 100
 127 15.0 10.2 15.2
 129 11.2 8.8 13.2



#96
 1,2,3-Trichlorobenzene
 Concen: 1.72 ug/l
 RT: 15.614 min Scan# 2328
 Delta R.T. 0.024 min
 Lab File: VD068304.D
 Acq: 05 Feb 2021 16:47

Tgt Ion:180 Resp: 4888
 Ion Ratio Lower Upper
 180 100
 182 0.0 48.3 144.8#
 145 0.0 16.7 50.1#

