

Data Path : Z:\voasrv\HPCHEM1\MSVOA\_D\Data\VD020524\  
 Data File : VD078347.D  
 Acq On : 05 Feb 2024 15:11  
 Operator : RP/MD  
 Sample : P1349-03  
 Misc : 5.83G/10ml/MSVOA\_D/SOIL  
 ALS Vial : 11 Sample Multiplier: 1

Instrument :  
 MSVOA\_D  
 ClientSampleId :

Quant Time: Feb 06 00:52:28 2024  
 Quant Method : Z:\voasrv\HPCHEM1\MSVOA\_D\Method\SFAMDLM020124SMA.M  
 Quant Title : SFAM01.0  
 QLast Update : Tue Feb 06 00:51:05 2024  
 Response via : Initial Calibration

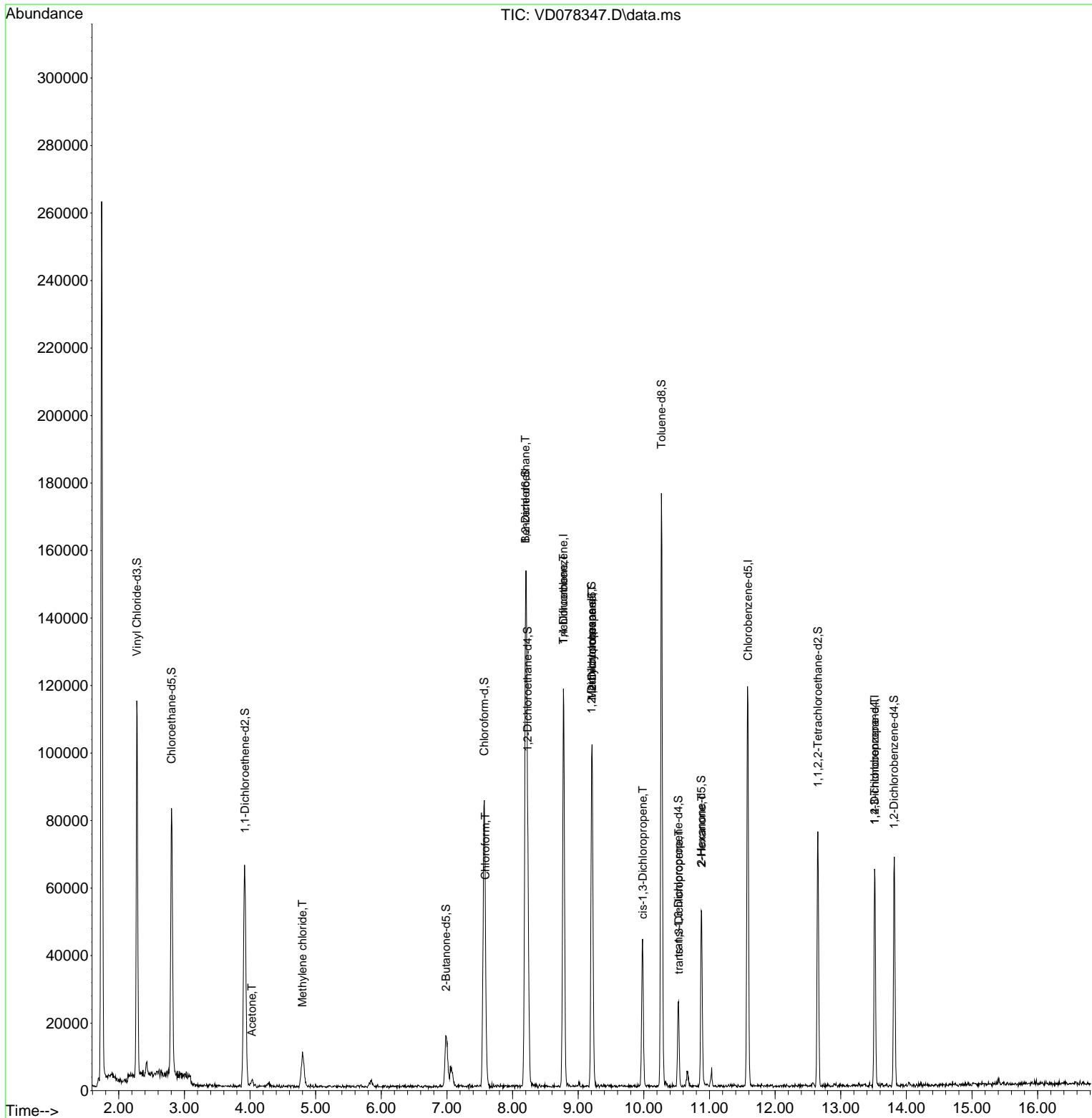
Compound	R.T.	QIon	Response	Conc	Units	Dev(Min)
-----						
Internal Standards						
1) 1,4-Difluorobenzene	8.775	114	100925	25.000	ug/L	0.00
28) Chlorobenzene-d5	11.587	117	69916	25.000	ug/L	0.00
58) 1,4-Dichlorobenzene-d4	13.516	152	16372	25.000	ug/L	0.00
System Monitoring Compounds						
4) Vinyl Chloride-d3	2.275	65	103261	36.062	ug/L	0.00
Spiked Amount	25.000	Range 30 - 150	Recovery	=	144.240%	
7) Chloroethane-d5	2.805	69	85152	35.378	ug/L	0.00
Spiked Amount	25.000	Range 30 - 150	Recovery	=	141.520%	
11) 1,1-Dichloroethene-d2	3.922	65	19174	31.013	ug/L	0.00
Spiked Amount	25.000	Range 45 - 110	Recovery	=	124.040%#	
21) 2-Butanone-d5	6.987	46	28518	67.644	ug/L	0.00
Spiked Amount	50.000	Range 20 - 135	Recovery	=	135.280%#	
24) Chloroform-d	7.569	84	85571	29.737	ug/L	0.00
Spiked Amount	25.000	Range 40 - 150	Recovery	=	118.960%	
26) 1,2-Dichloroethane-d4	8.228	65	44774	28.832	ug/L	0.00
Spiked Amount	25.000	Range 70 - 130	Recovery	=	115.320%	
32) Benzene-d6	8.199	84	168349	41.180	ug/L	0.00
Spiked Amount	25.000	Range 20 - 135	Recovery	=	164.720%#	
36) 1,2-Dichloropropane-d6	9.204	67	53615	42.600	ug/L	0.00
Spiked Amount	25.000	Range 70 - 120	Recovery	=	170.400%#	
41) Toluene-d8	10.269	98	119967	32.671	ug/L	0.00
Spiked Amount	25.000	Range 30 - 130	Recovery	=	130.680%#	
43) trans-1,3-Dichloroprop...	10.528	79	15008	26.706	ug/L	0.00
Spiked Amount	25.000	Range 30 - 135	Recovery	=	106.840%	
47) 2-Hexanone-d5	10.875	63	18700	73.232	ug/L	0.00
Spiked Amount	50.000	Range 20 - 135	Recovery	=	146.460%#	
56) 1,1,2,2-Tetrachloroeth...	12.651	84	39535	33.805	ug/L	0.00
Spiked Amount	25.000	Range 45 - 120	Recovery	=	135.240%#	
66) 1,2-Dichlorobenzene-d4	13.810	152	17870	30.489	ug/L	0.00
Spiked Amount	25.000	Range 75 - 120	Recovery	=	121.960%#	
-----						
Target Compounds						Qvalue
13) Acetone	4.028	43	1988	3.591	ug/L	88
16) Methylene chloride	4.799	84	4133	2.088	ug/L	90
25) Chloroform	7.587	83	1837	0.596	ug/L	80
27) 1,2-Dichloroethane	8.199	62	842	0.425	ug/L #	69
34) Trichloroethene	8.775	95	3236	2.720	ug/L #	3
35) Methylcyclohexane	9.210	83	12024	6.458	ug/L #	21
37) 1,2-Dichloropropane	9.210	63	5000	4.028	ug/L #	87
39) cis-1,3-Dichloropropene	9.987	75	1281	0.663	ug/L #	60
44) trans-1,3-Dichloropropene	10.534	75	741	0.438	ug/L #	83
48) 2-Hexanone	10.881	43	2283	3.630	ug/L #	63
61) 1,2,3-Trichloropropane	13.516	75	2547	6.099	ug/L #	61
-----						

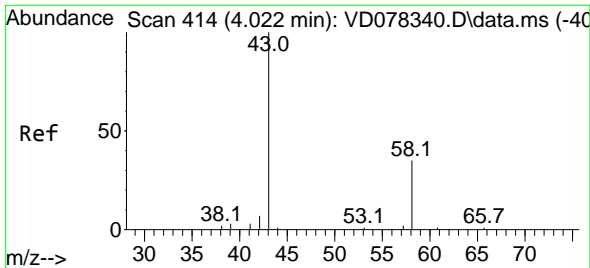
(#) = qualifier out of range (m) = manual integration (+) = signals summed

Data Path : Z:\voasrv\HPCHEM1\MSVOA\_D\Data\VD020524\  
 Data File : VD078347.D  
 Acq On : 05 Feb 2024 15:11  
 Operator : RP/MD  
 Sample : P1349-03  
 Misc : 5.83G/10ml/MSVOA\_D/SOIL  
 ALS Vial : 11 Sample Multiplier: 1

Instrument :  
 MSVOA\_D  
 ClientSampleId :

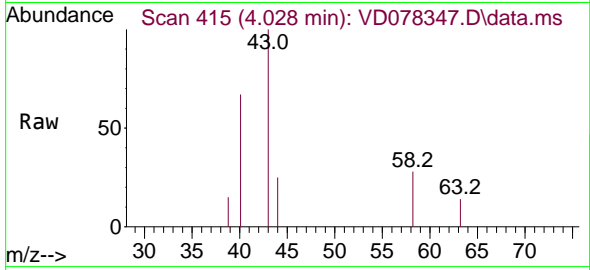
Quant Time: Feb 06 00:52:28 2024  
 Quant Method : Z:\voasrv\HPCHEM1\MSVOA\_D\Method\SFAMDLM020124SMA.M  
 Quant Title : SFAM01.0  
 QLast Update : Tue Feb 06 00:51:05 2024  
 Response via : Initial Calibration



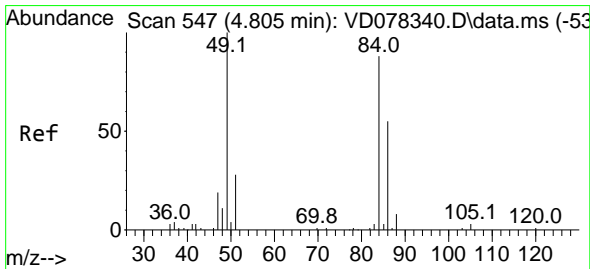
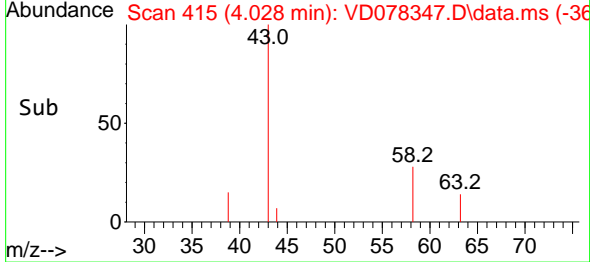
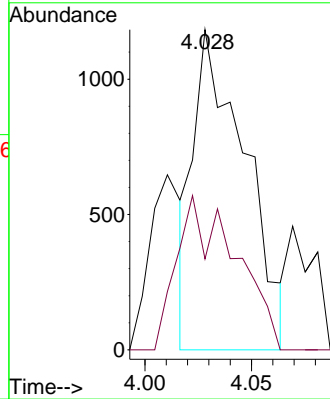


#13  
 Acetone  
 Concen: 3.591 ug/L  
 RT: 4.028 min Scan# 414  
 Delta R.T. 0.006 min  
 Lab File: VD078347.D  
 Acq: 05 Feb 2024 15:11

Instrument :  
 MSVOA\_D  
 ClientSampleId :

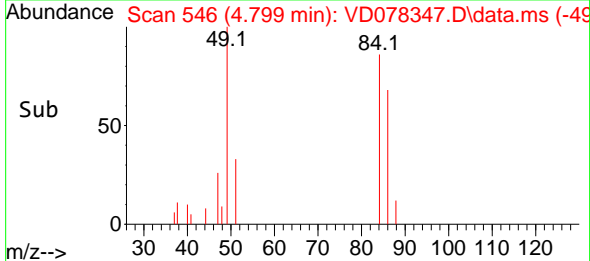
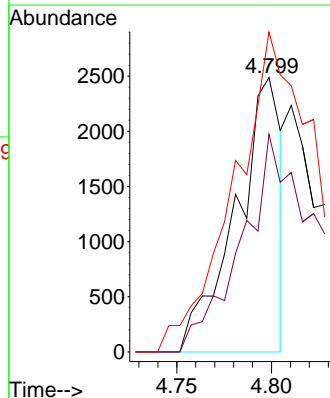
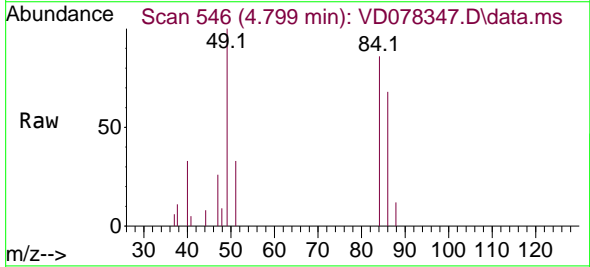


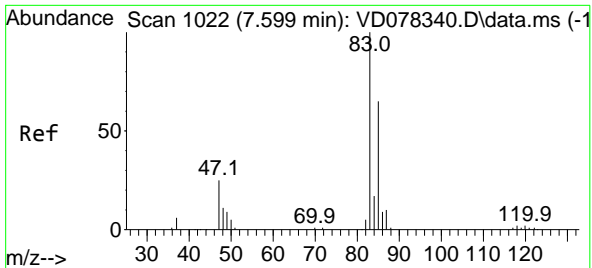
Tgt Ion: 43 Resp: 1988  
 Ion Ratio Lower Upper  
 43 100  
 58 26.6 0.0 67.2



#16  
 Methylene chloride  
 Concen: 2.088 ug/L  
 RT: 4.799 min Scan# 546  
 Delta R.T. -0.006 min  
 Lab File: VD078347.D  
 Acq: 05 Feb 2024 15:11

Tgt Ion: 84 Resp: 4133  
 Ion Ratio Lower Upper  
 84 100  
 86 79.3 45.4 84.2  
 49 116.6 77.3 143.7



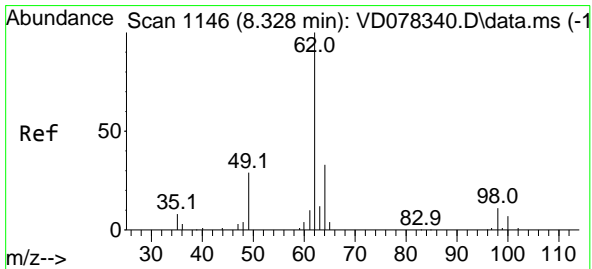
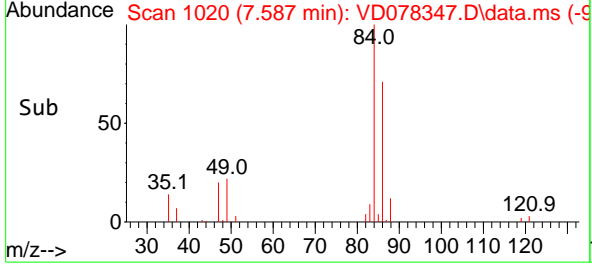
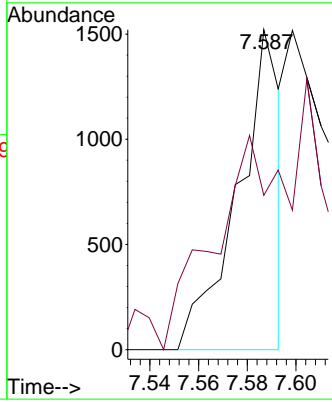
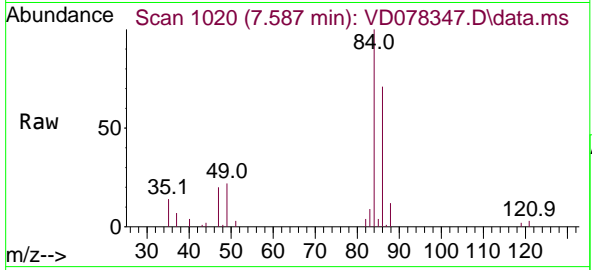


#25  
 Chloroform  
 Concen: 0.596 ug/L  
 RT: 7.587 min Scan# 1020  
 Delta R.T. -0.012 min  
 Lab File: VD078347.D  
 Acq: 05 Feb 2024 15:11

Instrument : MSVOA\_D  
 ClientSampleId :

Tgt Ion: 83 Resp: 1837

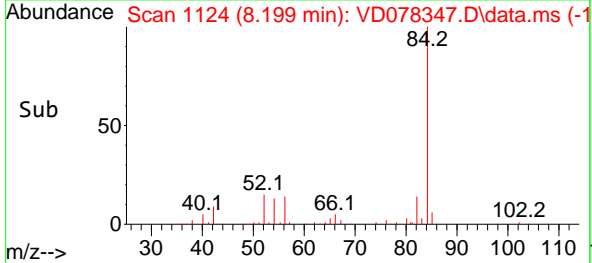
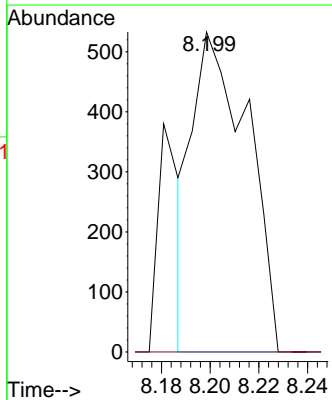
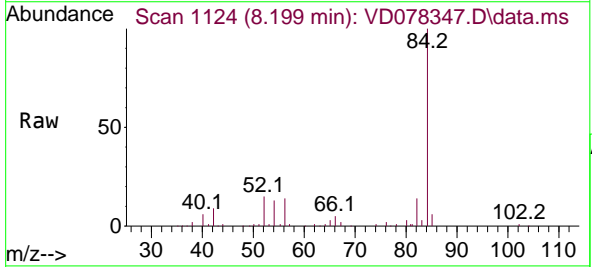
Ion	Ratio	Lower	Upper
83	100		
85	48.3	44.9	83.3

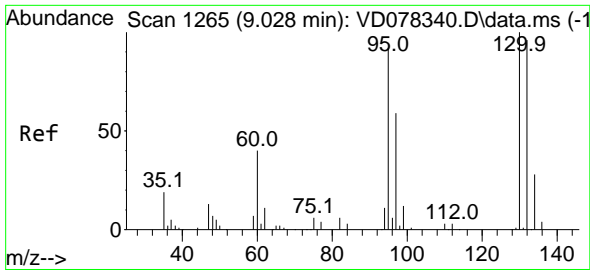


#27  
 1,2-Dichloroethane  
 Concen: 0.425 ug/L  
 RT: 8.199 min Scan# 1124  
 Delta R.T. -0.129 min  
 Lab File: VD078347.D  
 Acq: 05 Feb 2024 15:11

Tgt Ion: 62 Resp: 842

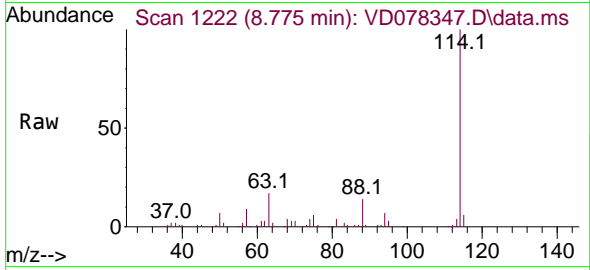
Ion	Ratio	Lower	Upper
62	100		
98	0.0	9.5	14.3#





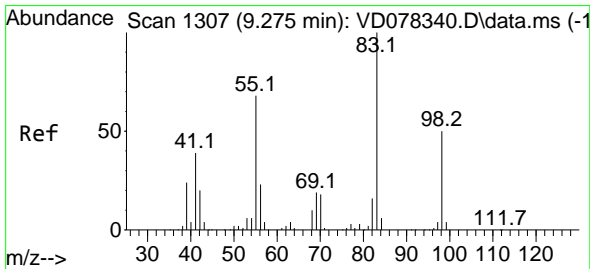
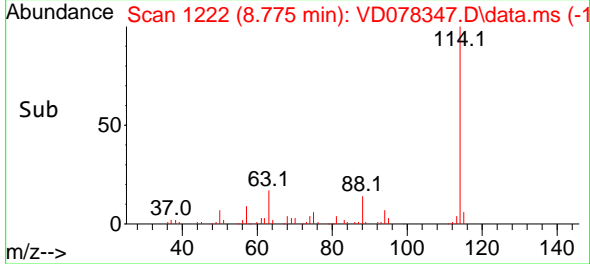
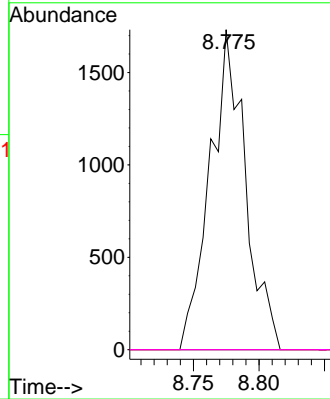
#34  
 Trichloroethene  
 Concen: 2.720 ug/L  
 RT: 8.775 min Scan# 1111  
 Delta R.T. -0.253 min  
 Lab File: VD078347.D  
 Acq: 05 Feb 2024 15:11

Instrument : MSVOA\_D  
 ClientSampleId :



Tgt Ion: 95 Resp: 3236

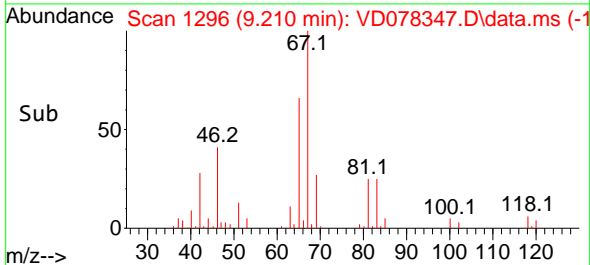
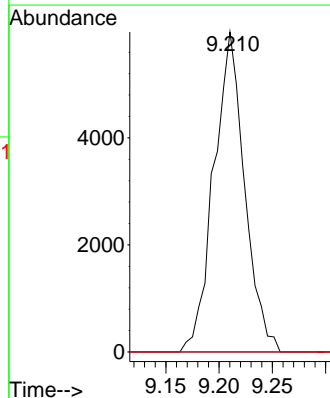
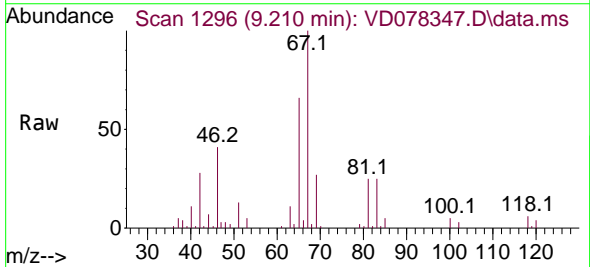
Ion	Ratio	Lower	Upper
95	100		
97	0.0	46.9	87.1#
132	0.0	73.7	136.9#
130	0.0	72.1	133.9#

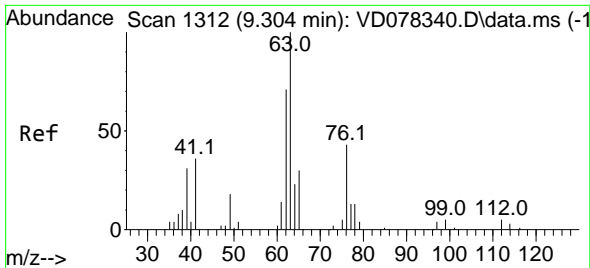


#35  
 Methylcyclohexane  
 Concen: 6.458 ug/L  
 RT: 9.210 min Scan# 1296  
 Delta R.T. -0.065 min  
 Lab File: VD078347.D  
 Acq: 05 Feb 2024 15:11

Tgt Ion: 83 Resp: 12024

Ion	Ratio	Lower	Upper
83	100		
55	0.0	56.2	84.4#
98	2.4	41.2	61.8#

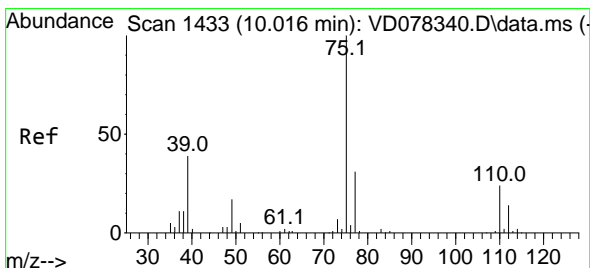
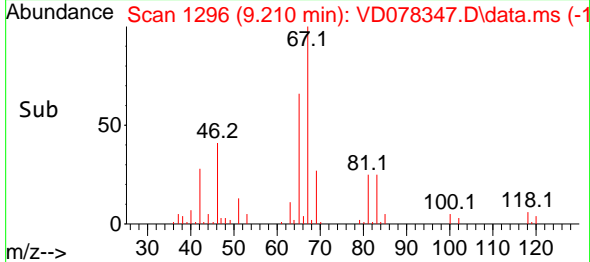
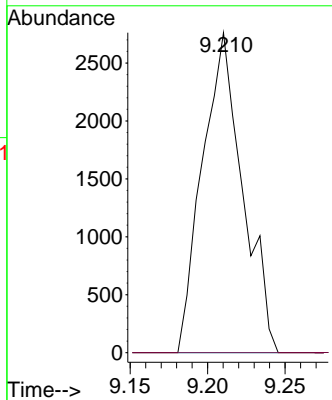
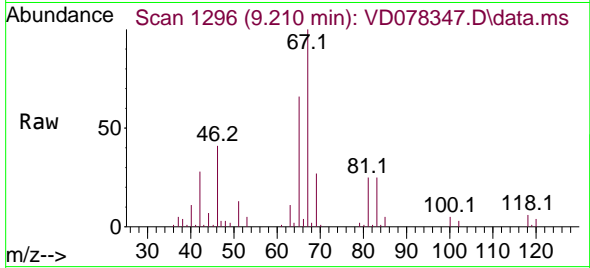




#37  
 1,2-Dichloropropane  
 Concen: 4.028 ug/L  
 RT: 9.210 min Scan# 11  
 Delta R.T. -0.094 min  
 Lab File: VD078347.D  
 Acq: 05 Feb 2024 15:11

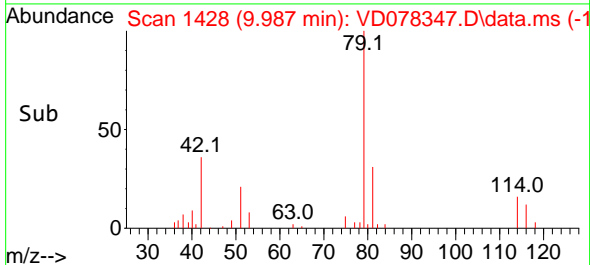
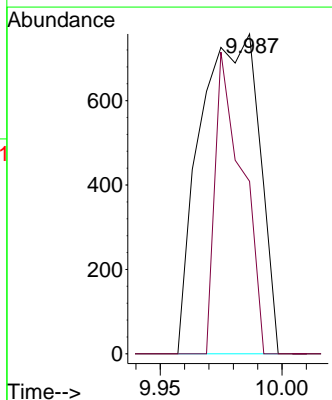
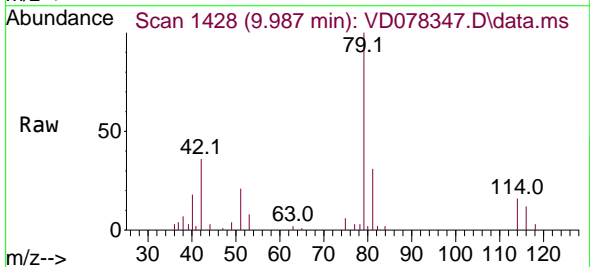
Instrument : MSVOA\_D  
 ClientSampleId :

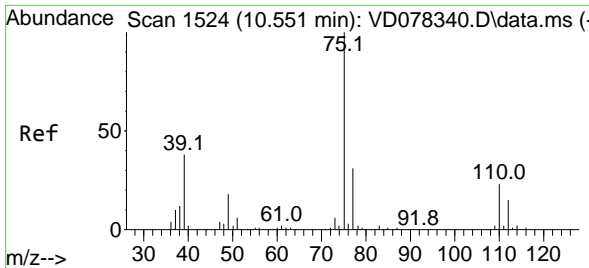
Tgt Ion: 63 Resp: 5000  
 Ion Ratio Lower Upper  
 63 100  
 112 0.0 3.4 5.2#



#39  
 cis-1,3-Dichloropropene  
 Concen: 0.663 ug/L  
 RT: 9.987 min Scan# 1428  
 Delta R.T. -0.029 min  
 Lab File: VD078347.D  
 Acq: 05 Feb 2024 15:11

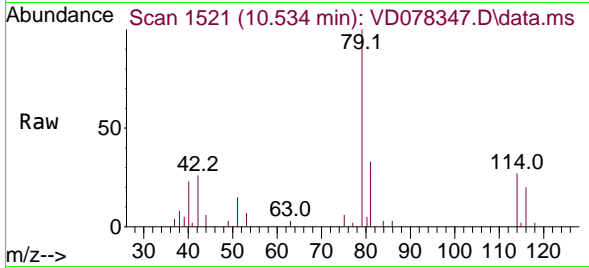
Tgt Ion: 75 Resp: 1281  
 Ion Ratio Lower Upper  
 75 100  
 77 54.0 22.3 41.5#



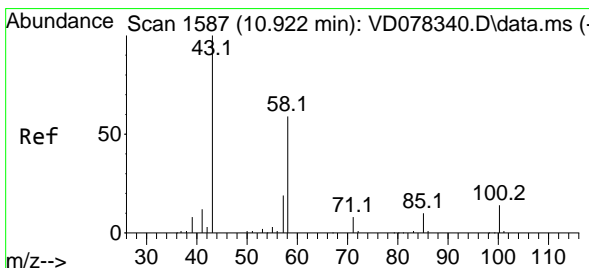
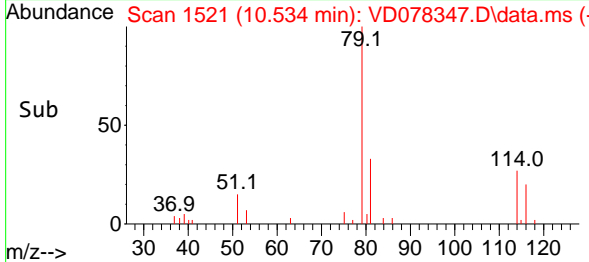
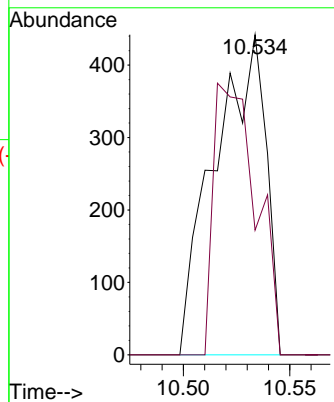


#44  
 trans-1,3-Dichloropropene  
 Concen: 0.438 ug/L  
 RT: 10.534 min Scan# 1521  
 Delta R.T. -0.018 min  
 Lab File: VD078347.D  
 Acq: 05 Feb 2024 15:11

Instrument : MSVOA\_D  
 ClientSampleId :

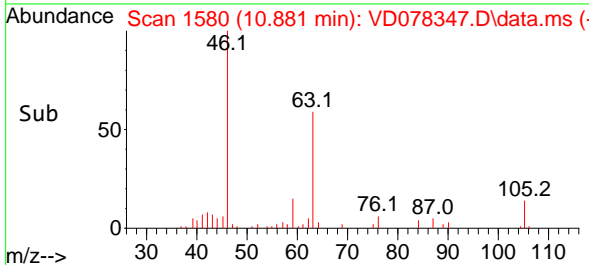
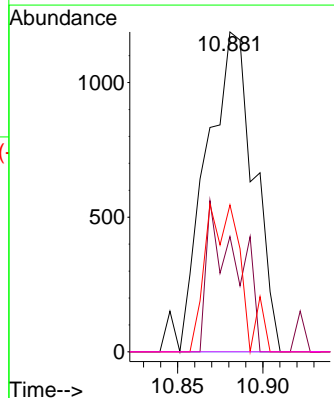
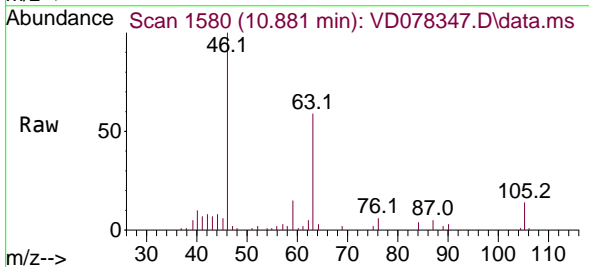


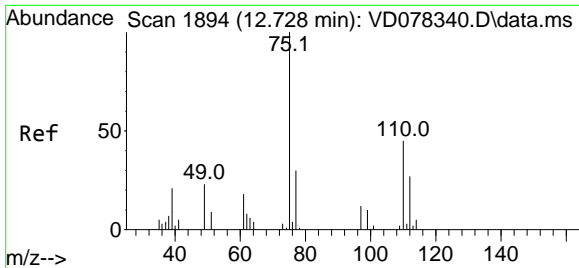
Tgt Ion: 75 Resp: 741  
 Ion Ratio Lower Upper  
 75 100  
 77 38.9 20.7 38.5#



#48  
 2-Hexanone  
 Concen: 3.630 ug/L  
 RT: 10.881 min Scan# 1580  
 Delta R.T. -0.041 min  
 Lab File: VD078347.D  
 Acq: 05 Feb 2024 15:11

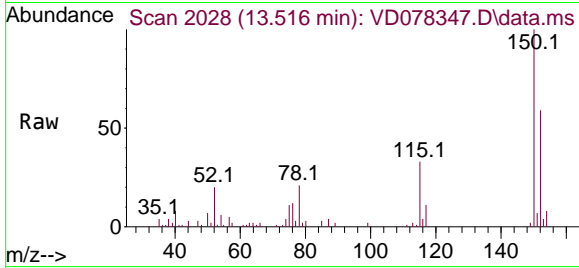
Tgt Ion: 43 Resp: 2283  
 Ion Ratio Lower Upper  
 43 100  
 58 23.6 48.5 72.7#  
 57 17.5 15.6 23.4  
 100 0.0 10.5 15.7#





#61  
 1,2,3-Trichloropropane  
 Concen: 6.099 ug/L  
 RT: 13.516 min Scan# 20  
 Delta R.T. 0.788 min  
 Lab File: VD078347.D  
 Acq: 05 Feb 2024 15:11

Instrument :  
 MSVOA\_D  
 ClientSampleId :



Tgt Ion: 75 Resp: 2547

Ion	Ratio	Lower	Upper
75	100		
77	38.4	26.5	39.7
110	0.0	31.8	47.8#

