

Data Path : Z:\voasrv\HPCHEM1\MSVOA\_D\Data\VD020923\  
 Data File : VD075296.D  
 Acq On : 09 Feb 2023 16:03  
 Operator : KP/SY  
 Sample : 01481-13  
 Misc : 5.96G/5.00ml/MSVOA\_D/SOIL  
 ALS Vial : 15 Sample Multiplier: 1

Instrument :  
 MSVOA\_D  
 ClientSampleId :  
 JPP-48-020723

Integration Parameters: RTEINT.P

Integrator: RTE  
 Smoothing : ON                   Filtering: 5  
 Sampling : 1                    Min Area: 3 % of largest Peak  
 Start Thrs: 0.2                Max Peaks: 100  
 Stop Thrs : 0                 Peak Location: TOP

If leading or trailing edge < 100 prefer < Baseline drop else tangent >  
 Peak separation: 5

Method : Z:\voasrv\HPCHEM1\MSVOA\_D\Method\82D020723S.M  
 Title : SW846 8260

Signal : TIC: VD075296.D\data.ms

peak #	R.T. min	first scan	max scan	last scan	PK TY	peak height	corr. area	corr. % max.	% of total
1	1.728	19	24	37	rVB	80260	136998	33.17%	6.007%
2	4.799	538	546	547	rBV2	3365	5893	1.43%	0.258%
3	7.810	1047	1058	1064	rBV	53644	135057	32.70%	5.922%
4	7.875	1064	1069	1080	rVB2	90531	202291	48.97%	8.870%
5	8.234	1120	1130	1144	rBV2	48546	110619	26.78%	4.850%
6	8.781	1212	1223	1231	rBV	145709	290808	70.40%	12.751%
7	10.269	1469	1476	1486	rBV	232762	413074	100.00%	18.112%
8	11.581	1692	1699	1712	rVB	221058	384931	93.19%	16.878%
9	12.575	1862	1868	1876	rVB	164990	266101	64.42%	11.668%
10	13.522	2022	2029	2036	rVB	205490	334884	81.07%	14.684%

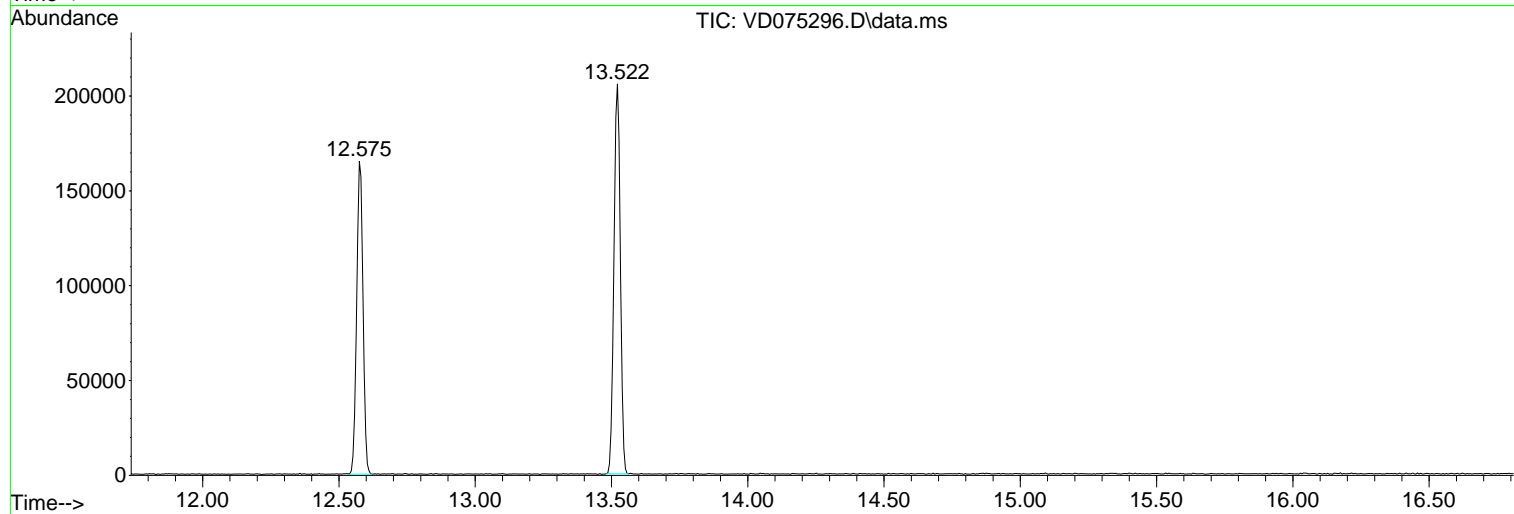
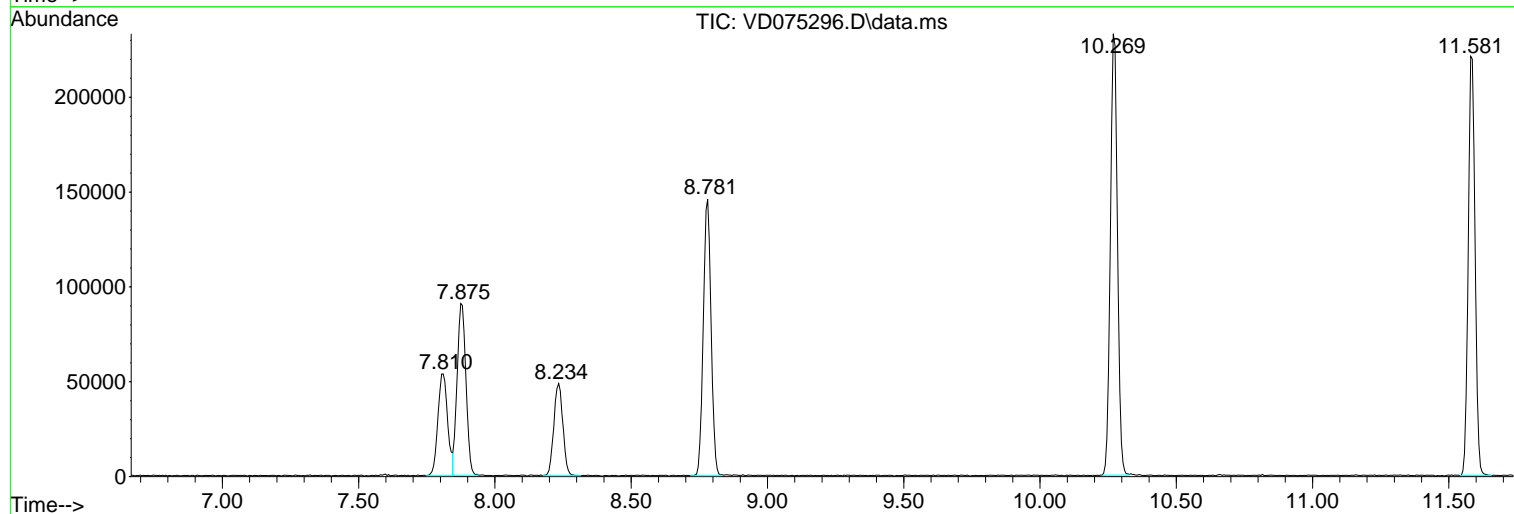
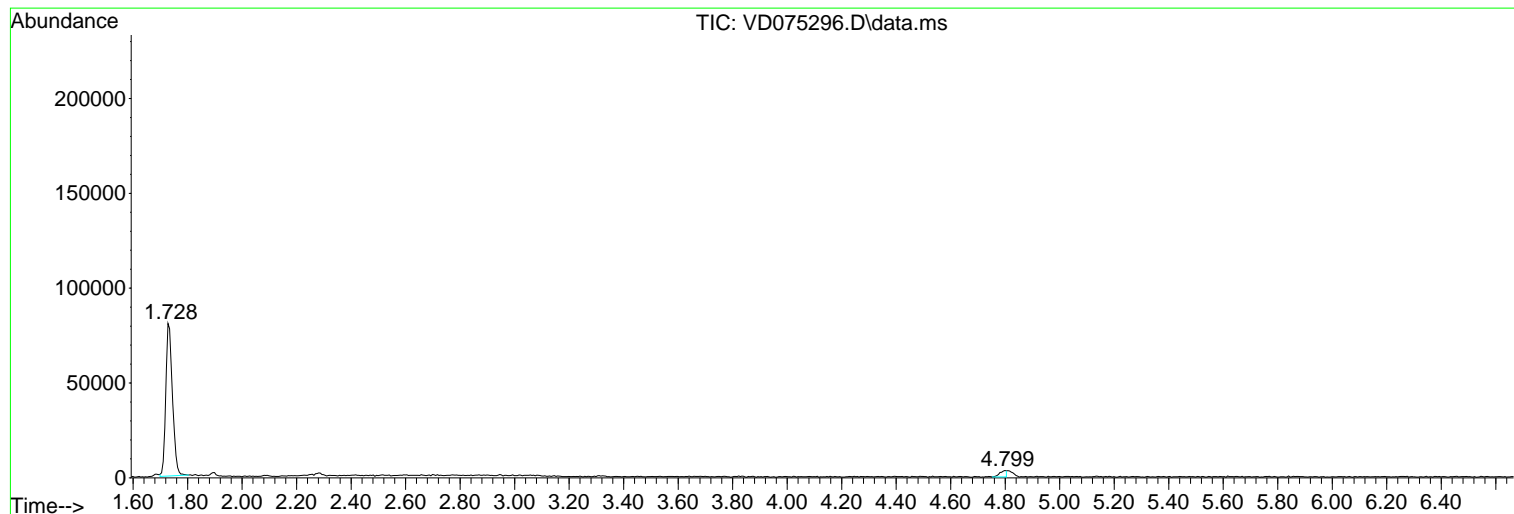
Sum of corrected areas: 2280656

Data Path : Z:\voasrv\HPCHEM1\MSVOA\_D\Data\VD020923\  
Data File : VD075296.D  
Acq On : 09 Feb 2023 16:03  
Operator : KP/SY  
Sample : 01481-13  
Misc : 5.96G/5.00ml/MSVOA\_D/SOIL  
ALS Vial : 15 Sample Multiplier: 1

Instrument :  
MSVOA\_D  
ClientSampleId :  
JPP-48-020723

Quant Method : Z:\voasrv\HPCHEM1\MSVOA\_D\Method\82D020723S.M  
Quant Title : SW846 8260

TIC Library : C:\Database\NIST20.L  
TIC Integration Parameters: LSCINT.P



Library Search Compound Report

Data Path : Z:\voasrv\HPCHEM1\MSVOA\_D\Data\VD020923\  
Data File : VD075296.D  
Acq On : 09 Feb 2023 16:03  
Operator : KP/SY  
Sample : 01481-13  
Misc : 5.96G/5.00ml/MSVOA\_D/SOIL  
ALS Vial : 15 Sample Multiplier: 1

Instrument :  
MSVOA\_D  
ClientSampleId :  
JPP-48-020723

Quant Method : Z:\voasrv\HPCHEM1\MSVOA\_D\Method\82D020723S.M  
Quant Title : SW846 8260

TIC Library : C:\Database\NIST20.L  
TIC Integration Parameters: LSCINT.P

No Library Search Compounds Detected

\*\*\*\*\*

Data Path : Z:\voasrv\HPCHEM1\MSVOA\_D\Data\VD020923\  
Data File : VD075296.D  
Acq On : 09 Feb 2023 16:03  
Operator : KP/SY  
Sample : 01481-13  
Misc : 5.96G/5.00ml/MSVOA\_D/SOIL  
ALS Vial : 15 Sample Multiplier: 1

Instrument :  
MSVOA\_D  
ClientSampleId :  
JPP-48-020723

Quant Method : Z:\voasrv\HPCHEM1\MSVOA\_D\Method\82D020723S.M  
Quant Title : SW846 8260

TIC Library : C:\Database\NIST20.L  
TIC Integration Parameters: LSCINT.P

TIC Top Hit name	RT	EstConc	Units	Response	--Internal Standard--			
					#	RT	Resp	Conc

---