

Data Path : Z:\voasrv\HPCHEM1\MSVOA_D\Data\VD021924\
 Data File : VD078462.D
 Acq On : 19 Feb 2024 14:34
 Operator : RP/MD
 Sample : P1509-11
 Misc : 5.08G/6ml/MSVOA_D/SOIL/A
 ALS Vial : 9 Sample Multiplier: 1

Instrument :
 MSVOA_D
 ClientSampleId :
 BP-VPB-191-GW-848-850

Quant Time: Feb 20 00:05:40 2024
 Quant Method : Z:\voasrv\HPCHEM1\MSVOA_D\Method\82D021324S.M
 Quant Title : SW846 8260
 QLast Update : Wed Feb 14 01:16:20 2024
 Response via : Initial Calibration

Compound	R.T.	QIon	Response	Conc	Units	Dev(Min)

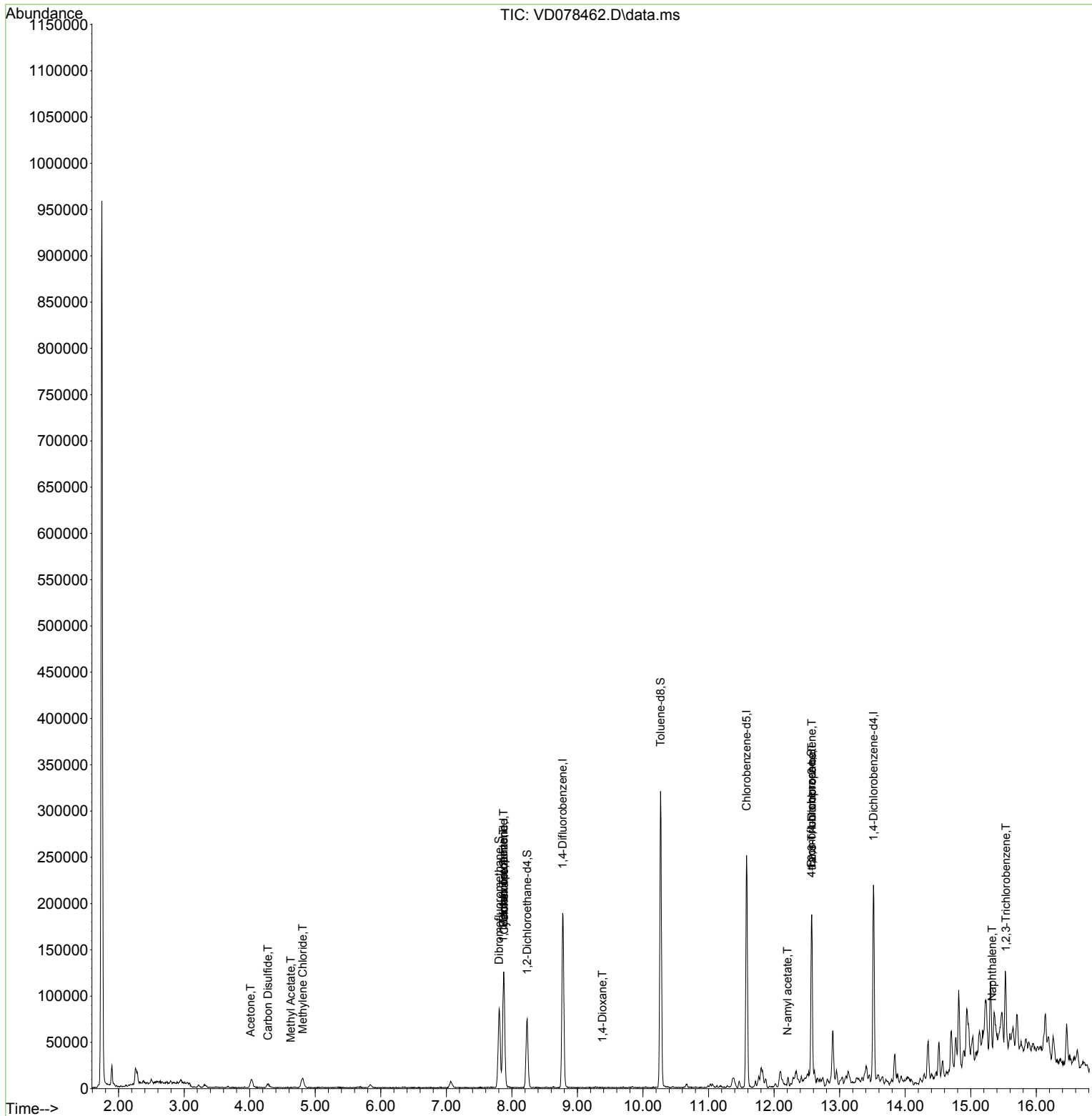
Internal Standards						
1) Pentafluorobenzene	7.875	168	95876	50.000	ug/l	0.00
34) 1,4-Difluorobenzene	8.775	114	175489	50.000	ug/l	0.00
63) Chlorobenzene-d5	11.581	117	153184	50.000	ug/l	0.00
72) 1,4-Dichlorobenzene-d4	13.516	152	56243	50.000	ug/l	0.00
System Monitoring Compounds						
33) 1,2-Dichloroethane-d4	8.234	65	55915	53.938	ug/l	0.00
Spiked Amount	50.000	Range	50 - 163	Recovery	=	107.880%
35) Dibromofluoromethane	7.805	113	63014	56.528	ug/l	0.00
Spiked Amount	50.000	Range	54 - 147	Recovery	=	113.060%
50) Toluene-d8	10.269	98	223282	50.072	ug/l	0.00
Spiked Amount	50.000	Range	58 - 134	Recovery	=	100.140%
62) 4-Bromofluorobenzene	12.569	95	57042	43.957	ug/l	0.00
Spiked Amount	50.000	Range	30 - 143	Recovery	=	87.920%
Target Compounds						
					Qvalue	
11) Tert butyl alcohol	5.046	59	312	Below Cal	#	73
16) Acetone	4.016	43	14998	55.476	ug/l #	84
17) Carbon Disulfide	4.281	76	5423	1.542	ug/l	99
18) Methyl Acetate	4.628	43	57	4.011	ug/l #	42
20) Methylene Chloride	4.811	84	8394	4.325	ug/l	93
23) Vinyl Acetate	6.334	43	57	Below Cal	#	63
25) 2-Butanone	7.081	43	507	Below Cal	#	37
31) Cyclohexane	7.881	56	2220	1.266	ug/l #	29
36) 1,1-Dichloropropene	7.869	75	7665	4.426	ug/l #	43
38) Carbon Tetrachloride	7.875	117	9163	5.343	ug/l #	14
49) 1,4-Dioxane	9.381	88	63	8.422	ug/l #	33
74) N-amyl acetate	12.204	43	1643	2.300	ug/l #	68
76) 1,2,3-Trichloropropane	12.575	75	29736	62.276	ug/l #	100
81) trans-1,4-Dichloro-2-b...	12.575	75	29736	129.287	ug/l #	18
95) Naphthalene	15.328	128	2595	1.497	ug/l #	76
96) 1,2,3-Trichlorobenzene	15.539	180	1855	2.341	ug/l #	13

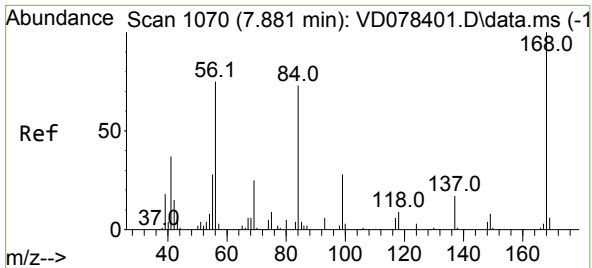
(#) = qualifier out of range (m) = manual integration (+) = signals summed

Data Path : Z:\voasrv\HPCHEM1\MSVOA_D\Data\VD021924\
 Data File : VD078462.D
 Acq On : 19 Feb 2024 14:34
 Operator : RP/MD
 Sample : P1509-11
 Misc : 5.08G/6ml/MSVOA_D/SOIL/A
 ALS Vial : 9 Sample Multiplier: 1

Instrument :
 MSVOA_D
 ClientSampleId :
 BP-VPB-191-GW-848-850

Quant Time: Feb 20 00:05:40 2024
 Quant Method : Z:\voasrv\HPCHEM1\MSVOA_D\Method\82D021324S.M
 Quant Title : SW846 8260
 QLast Update : Wed Feb 14 01:16:20 2024
 Response via : Initial Calibration

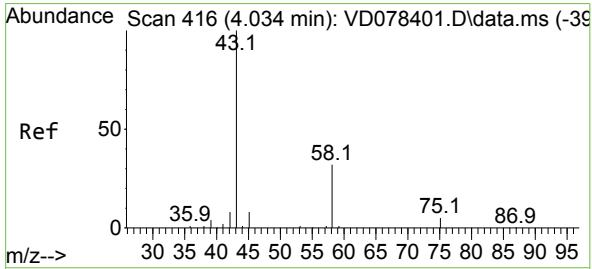
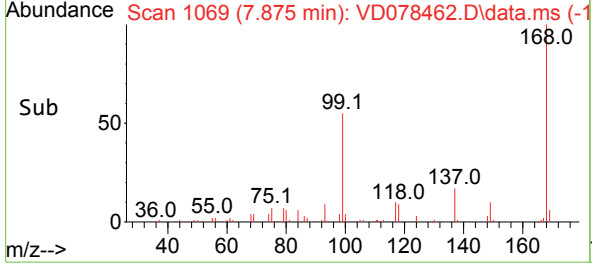
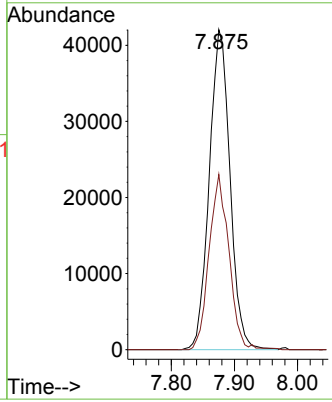
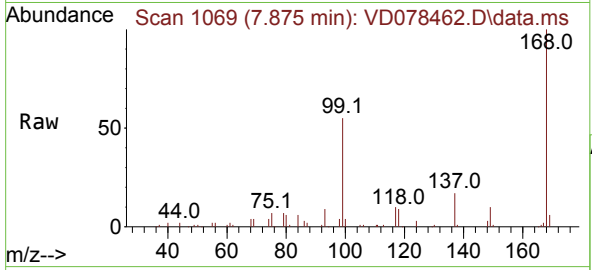




#1
 Pentafluorobenzene
 Concen: 50.000 ug/l
 RT: 7.875 min Scan# 10
 Delta R.T. -0.006 min
 Lab File: VD078462.D
 Acq: 19 Feb 2024 14:34

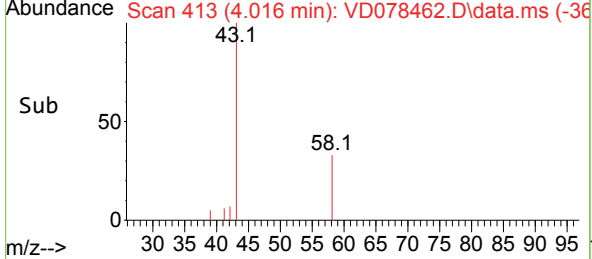
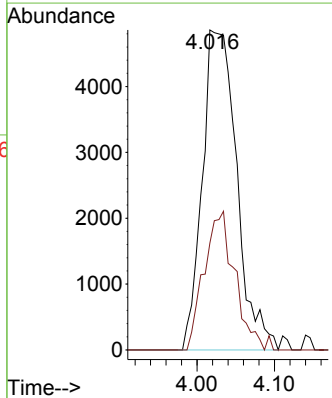
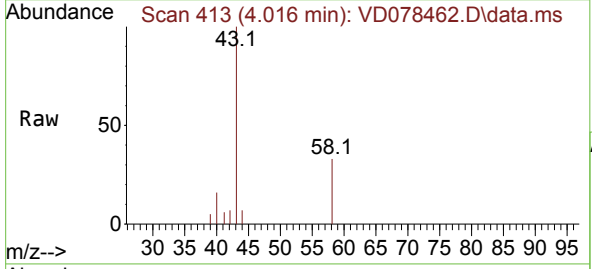
Instrument : MSVOA_D
 ClientSampleId : BP-VPB-191-GW-848-850

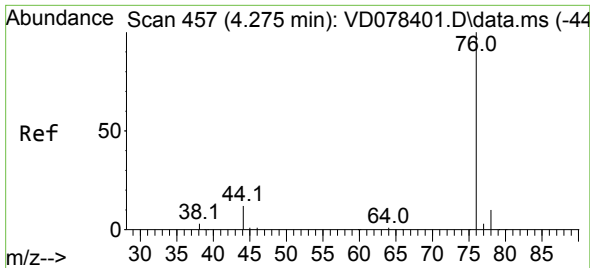
Tgt Ion:168 Resp: 95876
 Ion Ratio Lower Upper
 168 100
 99 54.8 36.7 55.1



#16
 Acetone
 Concen: 55.476 ug/l
 RT: 4.016 min Scan# 413
 Delta R.T. -0.018 min
 Lab File: VD078462.D
 Acq: 19 Feb 2024 14:34

Tgt Ion: 43 Resp: 14998
 Ion Ratio Lower Upper
 43 100
 58 33.4 34.7 52.1#

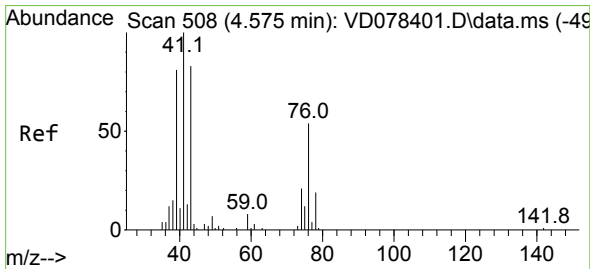
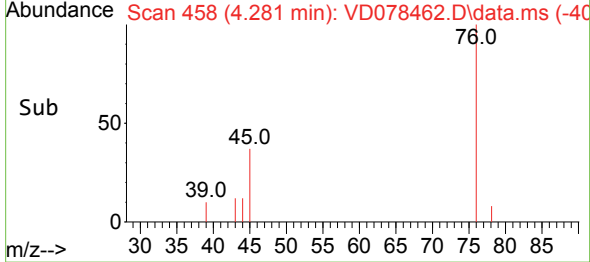
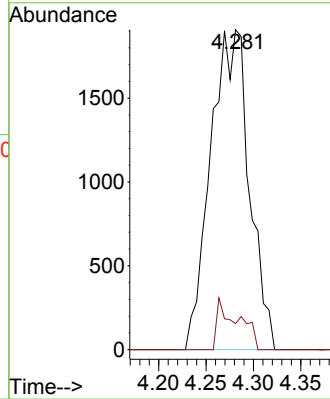
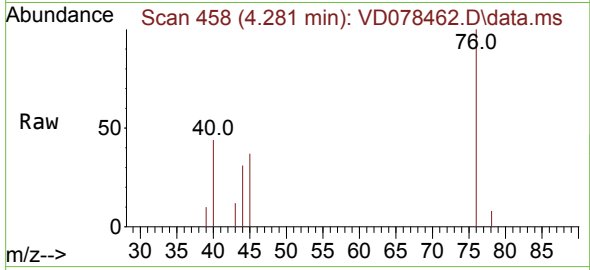




#17
 Carbon Disulfide
 Concen: 1.542 ug/l
 RT: 4.281 min Scan# 411
 Delta R.T. 0.006 min
 Lab File: VD078462.D
 Acq: 19 Feb 2024 14:34

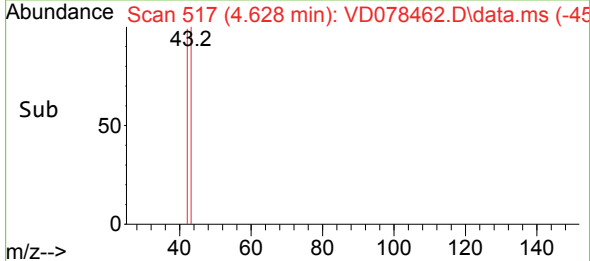
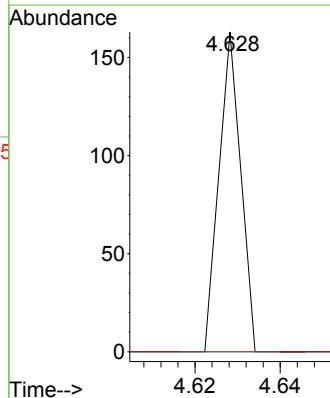
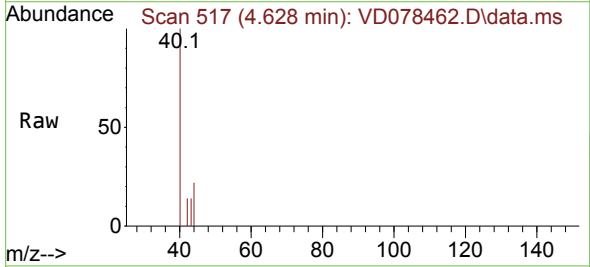
Instrument : MSVOA_D
 ClientSampleId : BP-VPB-191-GW-848-850

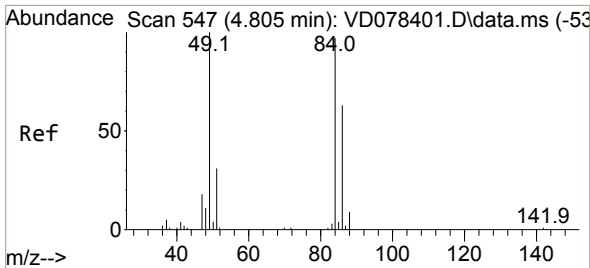
Tgt Ion: 76 Resp: 5423
 Ion Ratio Lower Upper
 76 100
 78 8.2 6.8 10.2



#18
 Methyl Acetate
 Concen: 4.011 ug/l
 RT: 4.628 min Scan# 517
 Delta R.T. 0.053 min
 Lab File: VD078462.D
 Acq: 19 Feb 2024 14:34

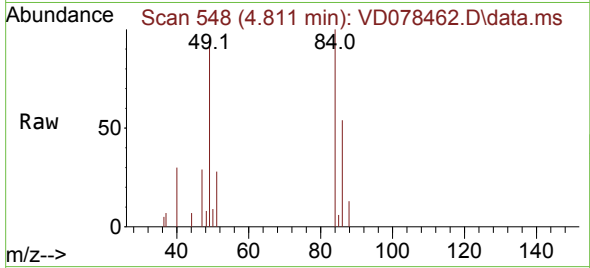
Tgt Ion: 43 Resp: 57
 Ion Ratio Lower Upper
 43 100
 74 0.0 26.4 39.6#





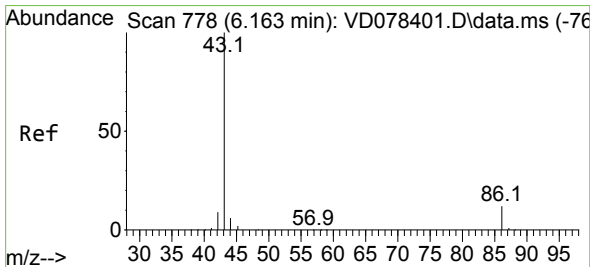
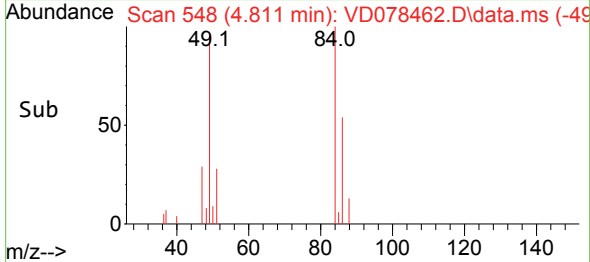
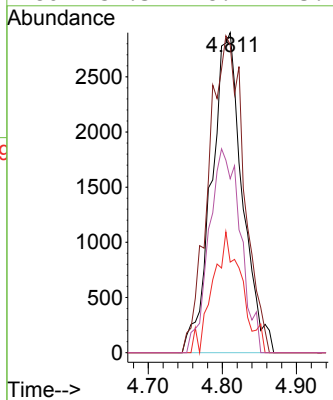
#20
 Methylene Chloride
 Concen: 4.325 ug/l
 RT: 4.811 min Scan# 54
 Delta R.T. 0.006 min
 Lab File: VD078462.D
 Acq: 19 Feb 2024 14:34

Instrument : MSVOA_D
 ClientSampleId : BP-VPB-191-GW-848-850



Tgt Ion: 84 Resp: 8394

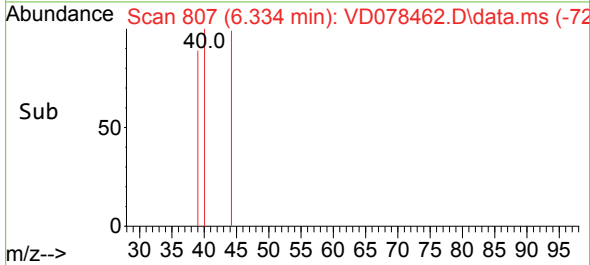
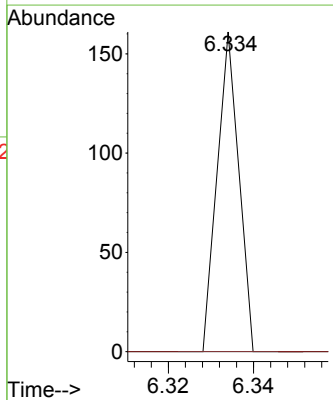
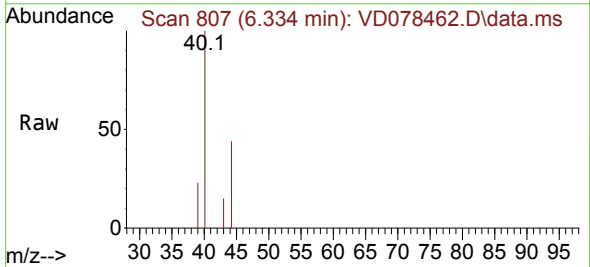
Ion	Ratio	Lower	Upper
84	100		
49	96.2	71.4	107.2
51	28.3	24.5	36.7
86	54.3	48.7	73.1

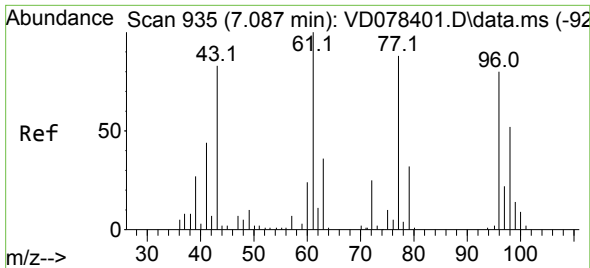


#23
 Vinyl Acetate
 Concen: Below Cal
 RT: 6.334 min Scan# 807
 Delta R.T. 0.171 min
 Lab File: VD078462.D
 Acq: 19 Feb 2024 14:34

Tgt Ion: 43 Resp: 57

Ion	Ratio	Lower	Upper
43	100		
86	0.0	12.5	18.7#

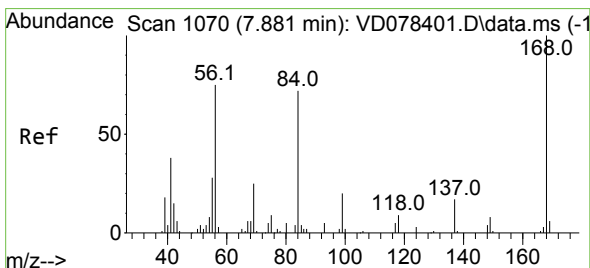
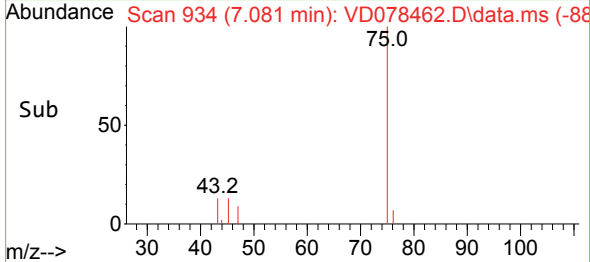
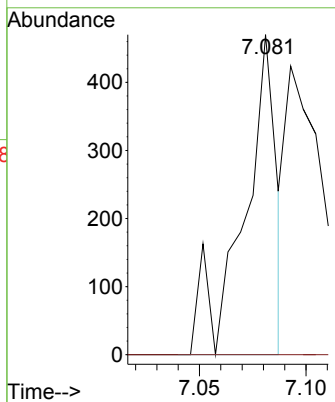
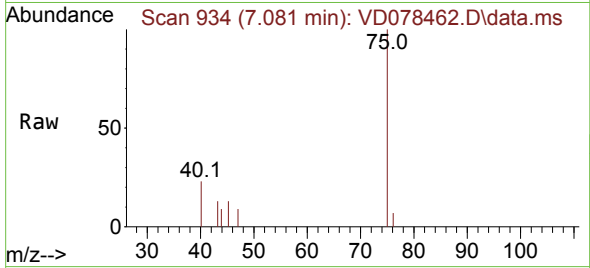




#25
 2-Butanone
 Concen: Below Cal
 RT: 7.081 min Scan# 91
 Delta R.T. -0.006 min
 Lab File: VD078462.D
 Acq: 19 Feb 2024 14:34

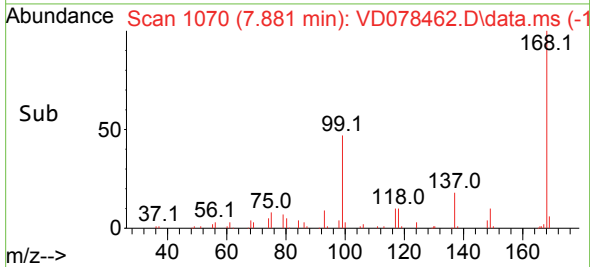
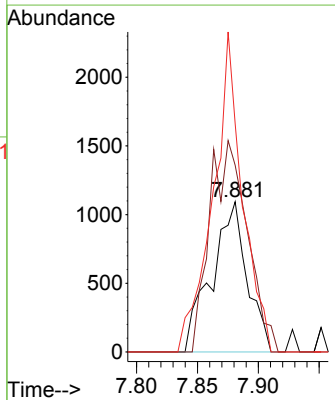
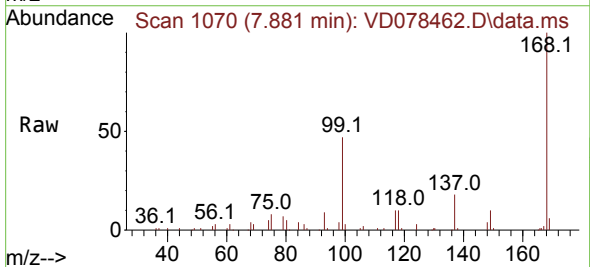
Instrument : MSVOA_D
 ClientSampleId : BP-VPB-191-GW-848-850

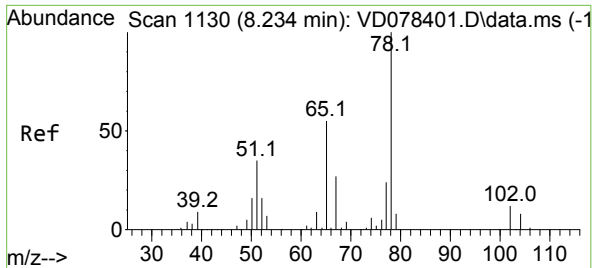
Tgt Ion: 43 Resp: 507
 Ion Ratio Lower Upper
 43 100
 72 0.0 30.7 46.1#



#31
 Cyclohexane
 Concen: 1.266 ug/l
 RT: 7.881 min Scan# 1070
 Delta R.T. 0.000 min
 Lab File: VD078462.D
 Acq: 19 Feb 2024 14:34

Tgt Ion: 56 Resp: 2220
 Ion Ratio Lower Upper
 56 100
 69 124.3 28.6 43.0#
 84 151.9 84.8 127.2#

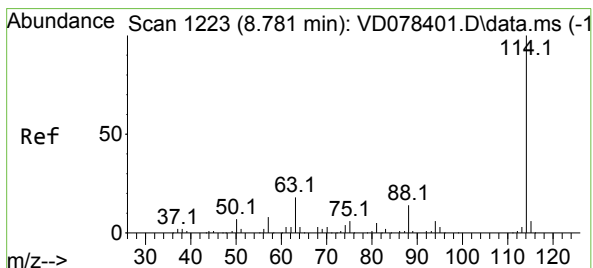
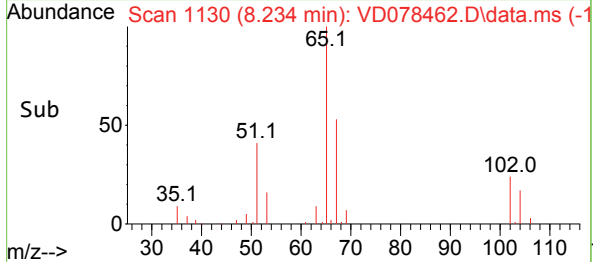
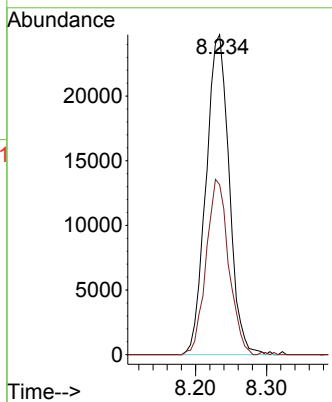
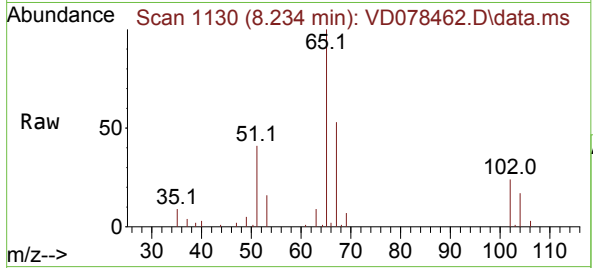




#33
 1,2-Dichloroethane-d4
 Concen: 53.938 ug/l
 RT: 8.234 min Scan# 1130
 Delta R.T. -0.000 min
 Lab File: VD078462.D
 Acq: 19 Feb 2024 14:34

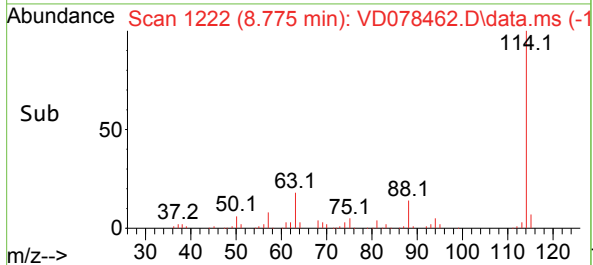
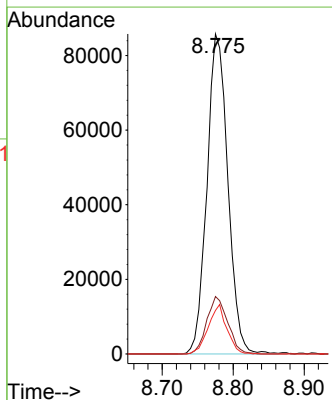
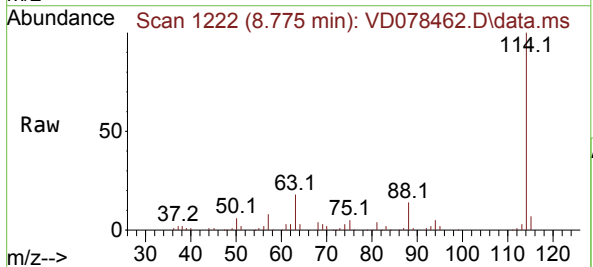
Instrument : MSVOA_D
 ClientSampleId : BP-VPB-191-GW-848-850

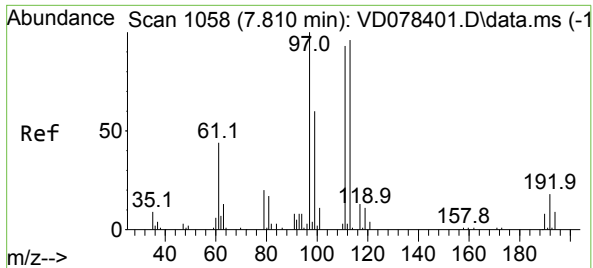
Tgt Ion: 65 Resp: 55915
 Ion Ratio Lower Upper
 65 100
 67 53.5 0.0 115.0



#34
 1,4-Difluorobenzene
 Concen: 50.000 ug/l
 RT: 8.775 min Scan# 1222
 Delta R.T. -0.006 min
 Lab File: VD078462.D
 Acq: 19 Feb 2024 14:34

Tgt Ion:114 Resp: 175489
 Ion Ratio Lower Upper
 114 100
 63 17.9 0.0 33.4
 88 13.6 0.0 26.2



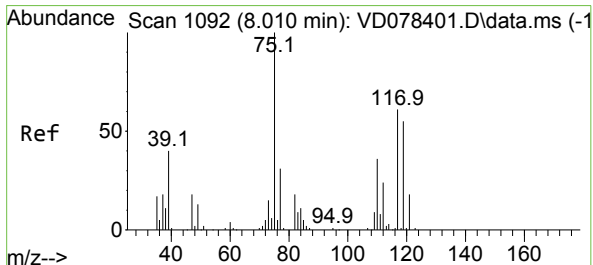
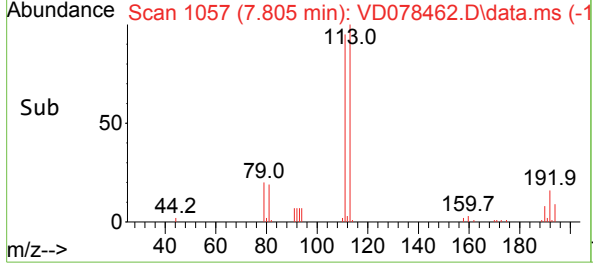
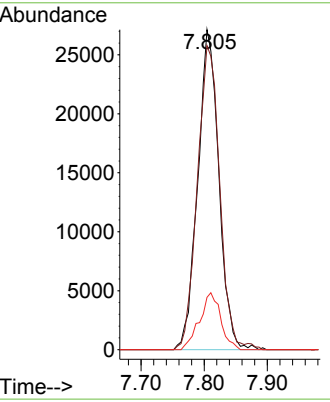
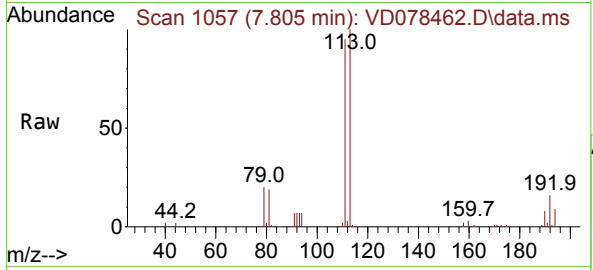


#35
 Dibromofluoromethane
 Concen: 56.528 ug/l
 RT: 7.805 min Scan# 1057
 Delta R.T. -0.006 min
 Lab File: VD078462.D
 Acq: 19 Feb 2024 14:34

Instrument : MSVOA_D
 ClientSampleId : BP-VPB-191-GW-848-850

Tgt Ion:113 Resp: 63014

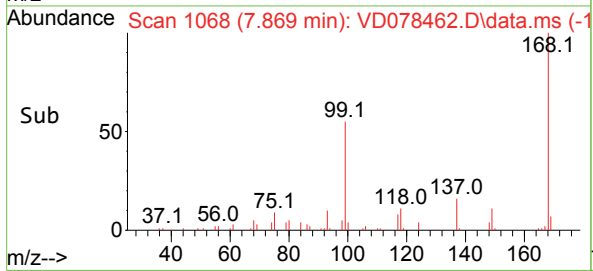
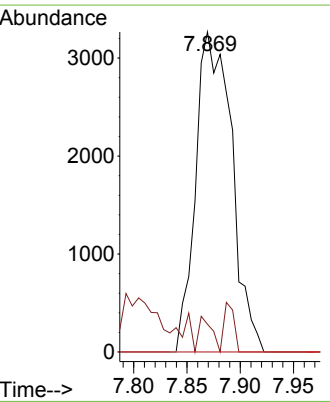
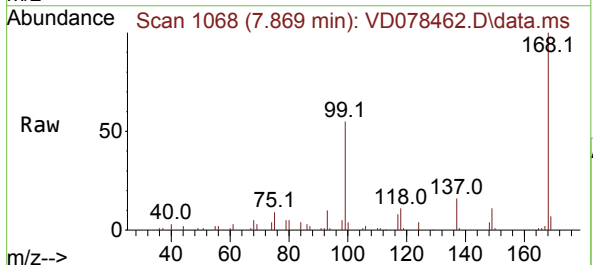
Ion	Ratio	Lower	Upper
113	100		
111	100.7	84.7	127.1
192	17.8	16.8	25.2

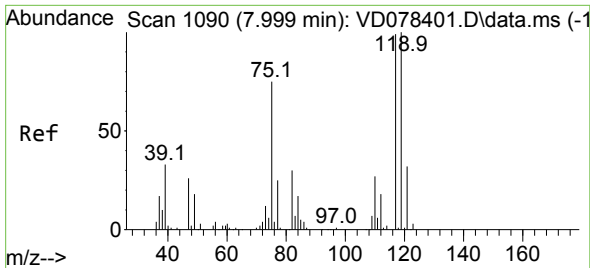


#36
 1,1-Dichloropropene
 Concen: 4.426 ug/l
 RT: 7.869 min Scan# 1068
 Delta R.T. -0.141 min
 Lab File: VD078462.D
 Acq: 19 Feb 2024 14:34

Tgt Ion: 75 Resp: 7665

Ion	Ratio	Lower	Upper
75	100		
110	4.0	19.9	59.6#
77	0.0	24.7	37.1#



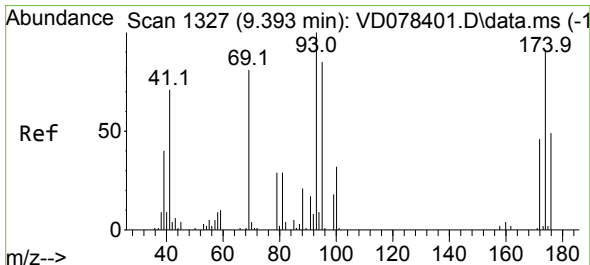
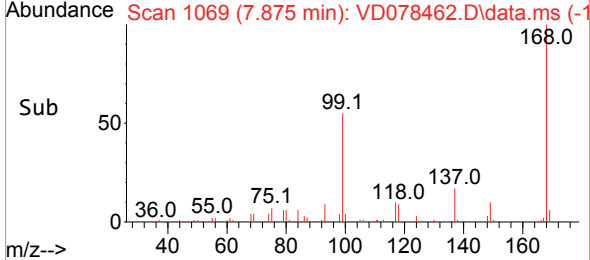
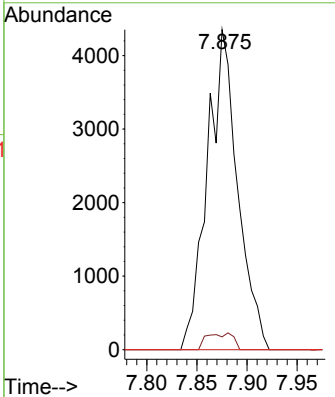
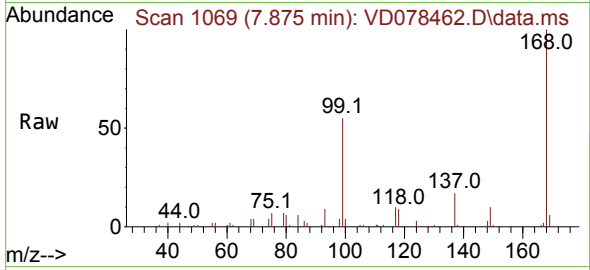


#38
 Carbon Tetrachloride
 Concen: 5.343 ug/l
 RT: 7.875 min Scan# 1069
 Delta R.T. -0.124 min
 Lab File: VD078462.D
 Acq: 19 Feb 2024 14:34

Instrument : MSVOA_D
 ClientSampleId : BP-VPB-191-GW-848-850

Tgt Ion: 117 Resp: 9163

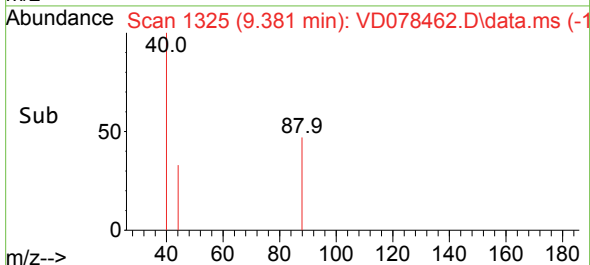
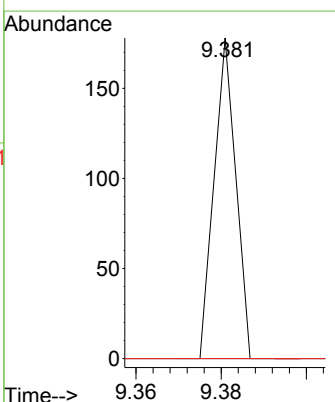
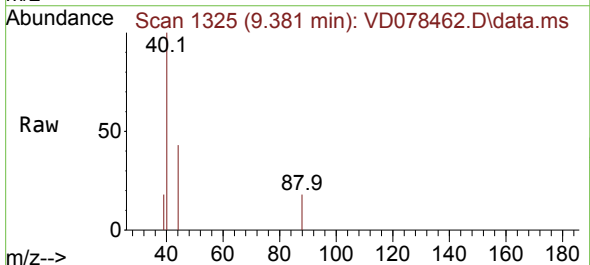
Ion	Ratio	Lower	Upper
117	100		
119	4.0	78.0	117.0#
121	0.0	24.2	36.2#

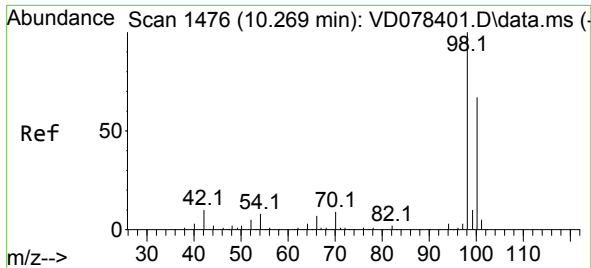


#49
 1,4-Dioxane
 Concen: 8.422 ug/l
 RT: 9.381 min Scan# 1325
 Delta R.T. -0.012 min
 Lab File: VD078462.D
 Acq: 19 Feb 2024 14:34

Tgt Ion: 88 Resp: 63

Ion	Ratio	Lower	Upper
88	100		
43	0.0	19.0	28.6#
58	0.0	43.5	65.3#

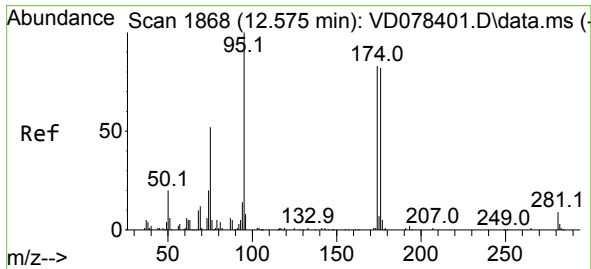
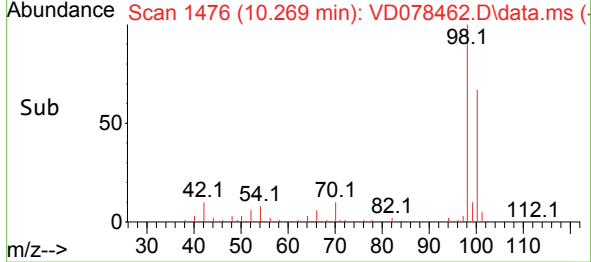
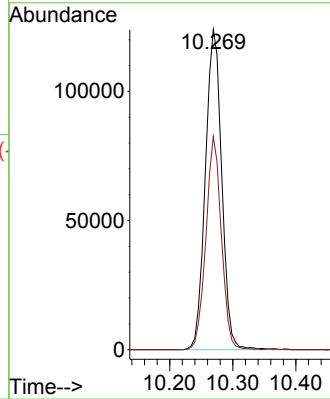
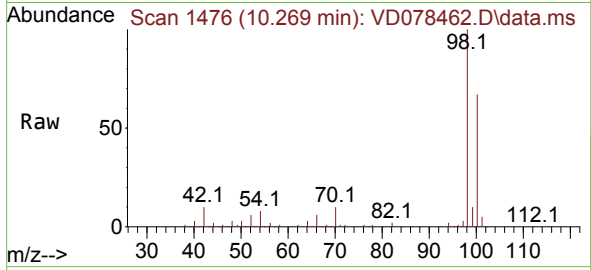




#50
 Toluene-d8
 Concen: 50.072 ug/l
 RT: 10.269 min Scan# 1476
 Delta R.T. -0.000 min
 Lab File: VD078462.D
 Acq: 19 Feb 2024 14:34

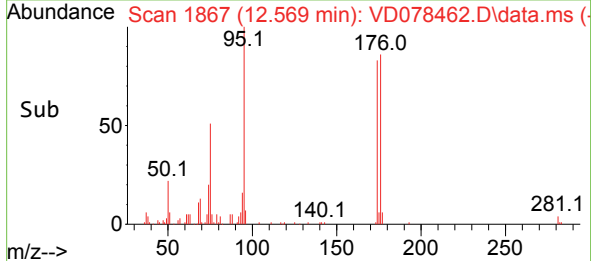
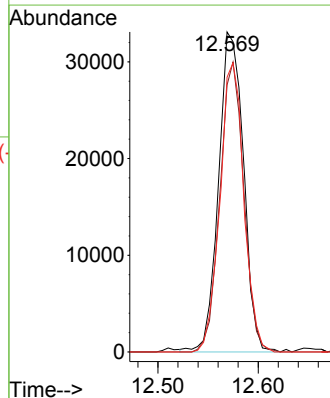
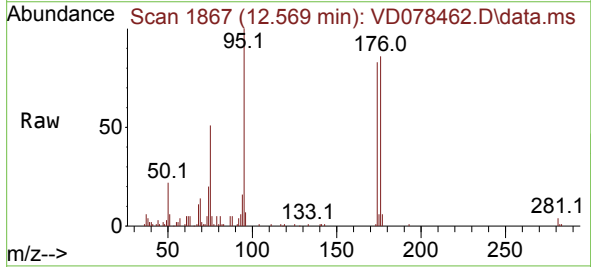
Instrument : MSVOA_D
 ClientSampleId : BP-VPB-191-GW-848-850

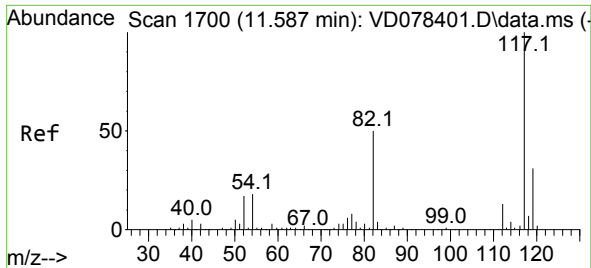
Tgt Ion: 98 Resp: 223282
 Ion Ratio Lower Upper
 98 100
 100 62.9 50.3 75.5



#62
 4-Bromofluorobenzene
 Concen: 43.957 ug/l
 RT: 12.569 min Scan# 1867
 Delta R.T. -0.006 min
 Lab File: VD078462.D
 Acq: 19 Feb 2024 14:34

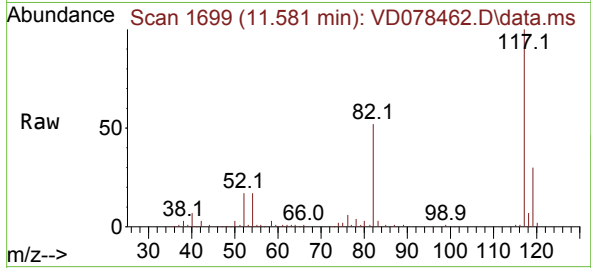
Tgt Ion: 95 Resp: 57042
 Ion Ratio Lower Upper
 95 100
 174 86.6 0.0 201.8
 176 86.7 0.0 191.8



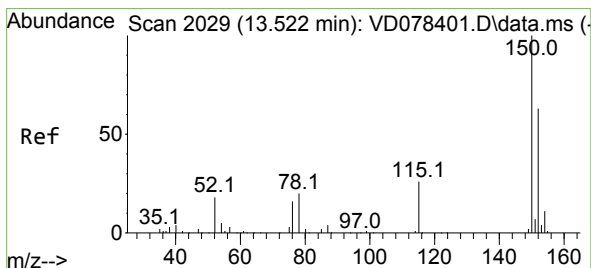
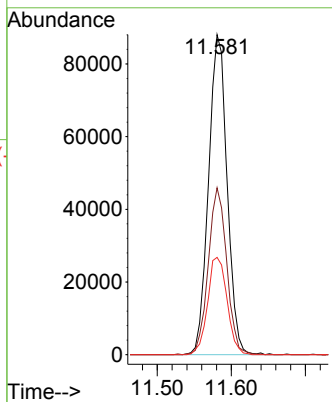
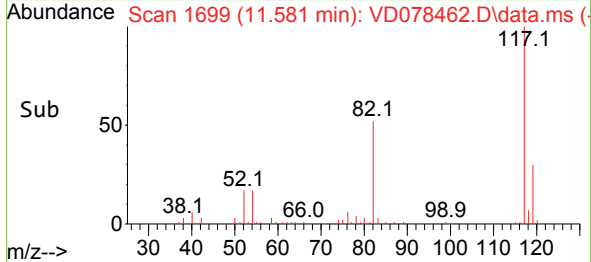


#63
 Chlorobenzene-d5
 Concen: 50.000 ug/l
 RT: 11.581 min Scan# 1699
 Delta R.T. -0.006 min
 Lab File: VD078462.D
 Acq: 19 Feb 2024 14:34

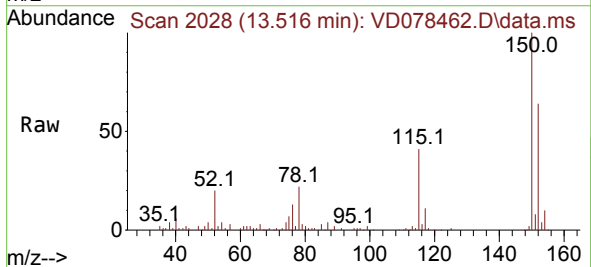
Instrument : MSVOA_D
 ClientSampleId : BP-VPB-191-GW-848-850



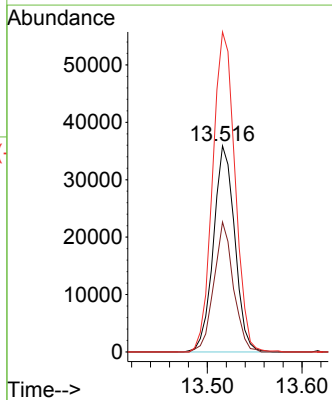
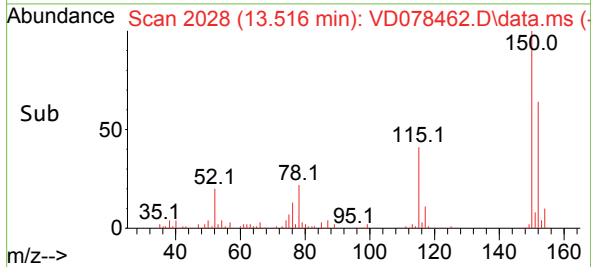
Tgt Ion:117 Resp: 153184
 Ion Ratio Lower Upper
 117 100
 82 52.2 38.3 57.5
 119 30.4 25.0 37.4

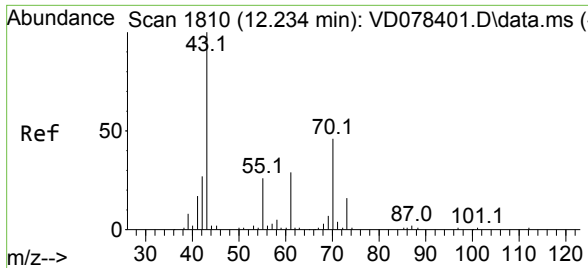


#72
 1,4-Dichlorobenzene-d4
 Concen: 50.000 ug/l
 RT: 13.516 min Scan# 2028
 Delta R.T. -0.006 min
 Lab File: VD078462.D
 Acq: 19 Feb 2024 14:34



Tgt Ion:152 Resp: 56243
 Ion Ratio Lower Upper
 152 100
 115 57.8 27.1 81.3
 150 162.7 0.0 353.6

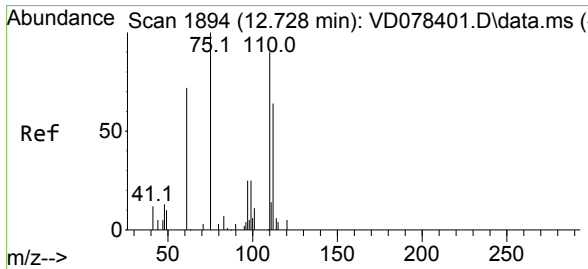
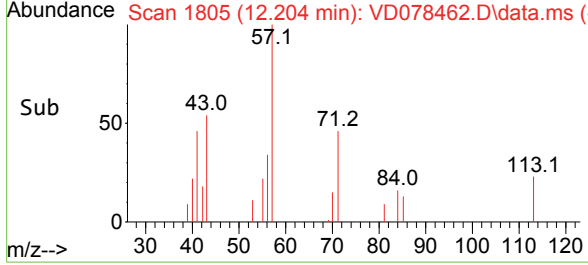
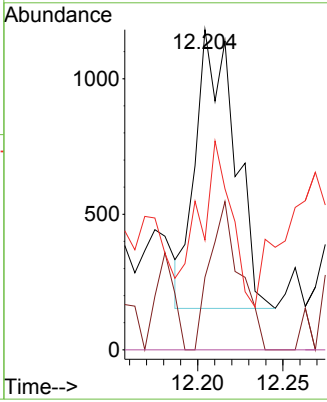
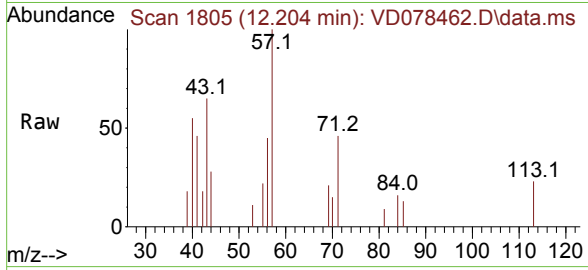




#74
 N-amy1 acetate
 Concen: 2.300 ug/l
 RT: 12.204 min Scan# 1805
 Delta R.T. -0.029 min
 Lab File: VD078462.D
 Acq: 19 Feb 2024 14:34

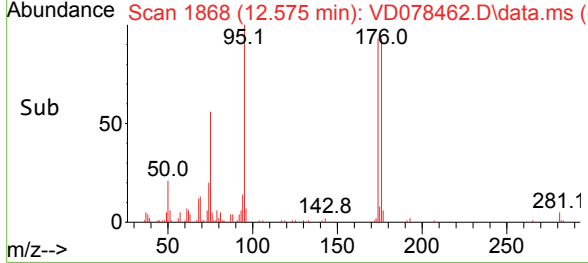
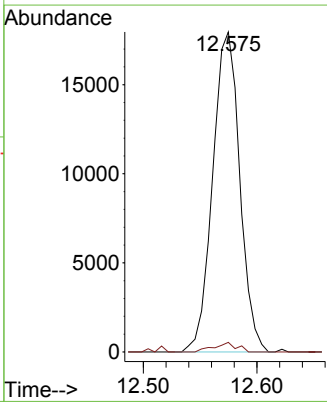
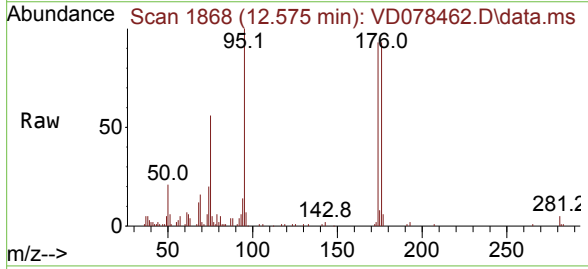
Instrument :
 MSVOA_D
ClientSampleId :
 BP-VPB-191-GW-848-850

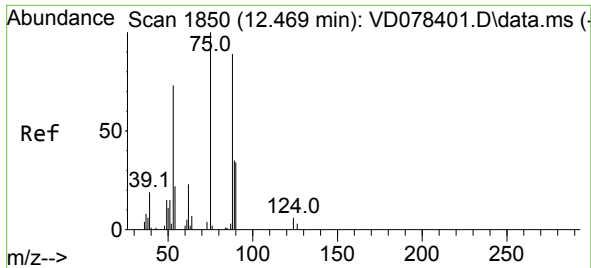
Tgt Ion	Resp	Ion Ratio	Lower	Upper
43	1643	100		
70		41.4	45.0	67.4#
55		47.6	23.8	35.6#
61		0.0	22.1	33.1#



#76
 1,2,3-Trichloropropane
 Concen: 62.276 ug/l
 RT: 12.575 min Scan# 1868
 Delta R.T. -0.153 min
 Lab File: VD078462.D
 Acq: 19 Feb 2024 14:34

Tgt Ion	Resp	Ion Ratio	Lower	Upper
75	29736	100		
77		2.5	0.0	0.0#

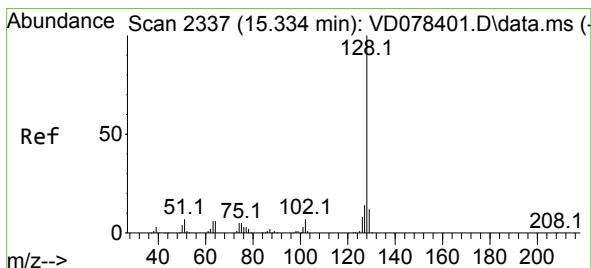
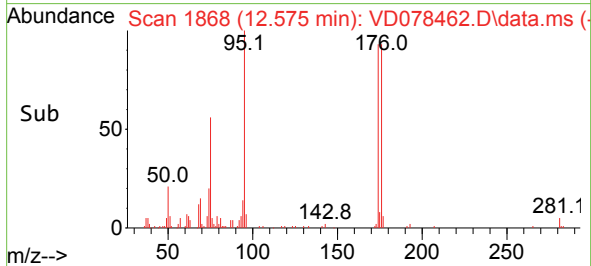
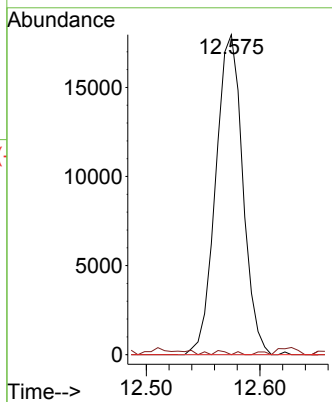
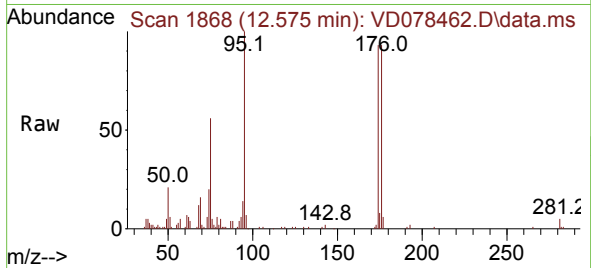




#81
 trans-1,4-Dichloro-2-butene
 Concen: 129.287 ug/l
 RT: 12.575 min Scan# 1868
 Delta R.T. 0.106 min
 Lab File: VD078462.D
 Acq: 19 Feb 2024 14:34

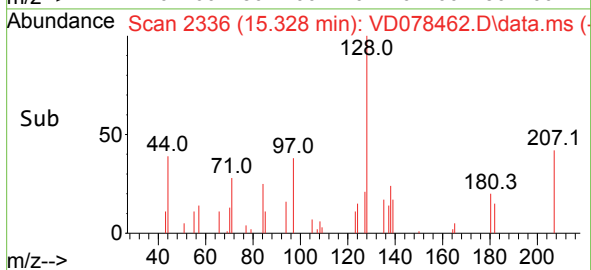
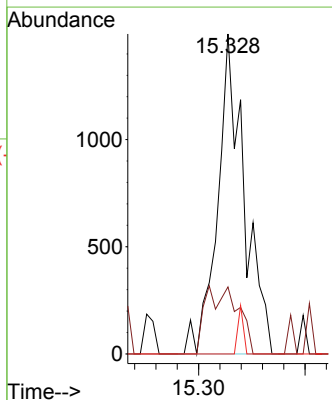
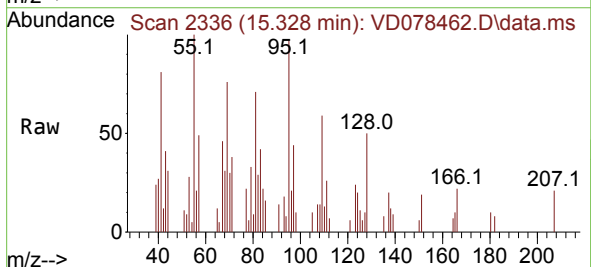
Instrument : MSVOA_D
 ClientSampleId : BP-VPB-191-GW-848-850

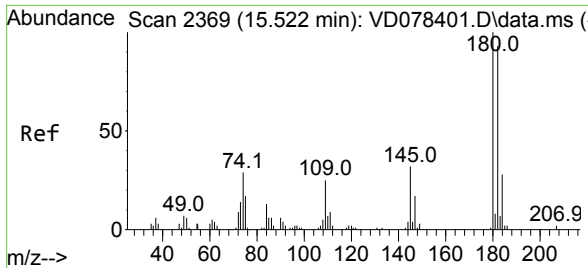
Tgt Ion	Resp	Lower	Upper
75	29736		
53	0.7	63.0	94.4#
89	0.0	37.9	56.9#



#95
 Naphthalene
 Concen: 1.497 ug/l
 RT: 15.328 min Scan# 2336
 Delta R.T. -0.006 min
 Lab File: VD078462.D
 Acq: 19 Feb 2024 14:34

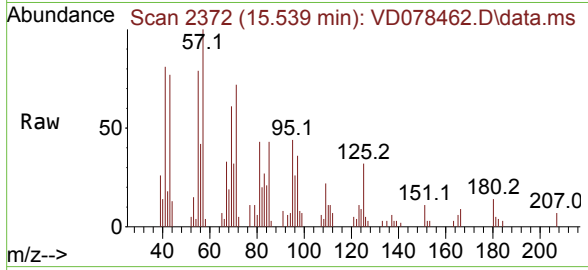
Tgt Ion	Resp	Lower	Upper
128	2595		
127	21.0	10.5	15.7#
129	0.0	8.7	13.1#





#96
 1,2,3-Trichlorobenzene
 Concen: 2.341 ug/l
 RT: 15.539 min Scan# 21
 Delta R.T. 0.018 min
 Lab File: VD078462.D
 Acq: 19 Feb 2024 14:34

Instrument : MSVOA_D
 ClientSampleId : BP-VPB-191-GW-848-850



Tgt Ion:180 Resp: 1855

Ion	Ratio	Lower	Upper
180	100		
182	0.0	47.3	141.9#
145	0.0	15.1	45.3#

