

Data Path : Z:\voasrv\HPCHEM1\MSVOA_D\Data\VD022421\
 Data File : VD068427.D
 Acq On : 24 Feb 2021 10:16
 Operator : VA/SY
 Sample : VD0224SBL01
 Misc : 5.00G/5.00ml/MSVOA_D/SOIL
 ALS Vial : 3 Sample Multiplier: 1

Instrument :
 MSVOA_D
 ClientSampleId :
 VD0224SBL01

Integration Parameters: RTEINT.P
 Integrator: RTE
 Smoothing : ON Filtering: 5
 Sampling : 1 Min Area: 3 % of largest Peak
 Start Thrs: 0.2 Max Peaks: 100
 Stop Thrs : 0 Peak Location: TOP

If leading or trailing edge < 100 prefer < Baseline drop else tangent >
 Peak separation: 5

Method : Z:\voasrv\HPCHEM1\MSVOA_D\Method\82D021221S.M
 Title : SW846 8260

Signal : TIC: VD068427.D\data.ms

peak #	R.T. min	first scan	max scan	last scan	PK TY	peak height	corr. area	corr. % max.	% of total
1	4.967	507	518	529	rBV4	14066	46004	1.77%	0.344%
2	7.203	887	898	907	rBV2	16768	49152	1.89%	0.367%
3	7.914	1009	1019	1024	rBV	332260	791857	30.43%	5.914%
4	7.979	1024	1030	1042	rVB	560863	1300399	49.97%	9.712%
5	8.332	1075	1090	1102	rBV	297312	725572	27.88%	5.419%
6	8.867	1172	1181	1196	rBV	902329	1806711	69.42%	13.493%
7	10.344	1424	1432	1442	rBV	1422506	2602499	100.00%	19.437%
8	10.726	1489	1497	1504	rBV	84613	145038	5.57%	1.083%
9	11.644	1645	1653	1665	rBV	1269948	2190161	84.16%	16.357%
10	11.849	1683	1688	1695	rBV2	14073	26161	1.01%	0.195%
11	12.632	1814	1821	1829	rVB	1021193	1658753	63.74%	12.388%
12	13.573	1974	1981	1989	rVB	1267540	2047207	78.66%	15.290%

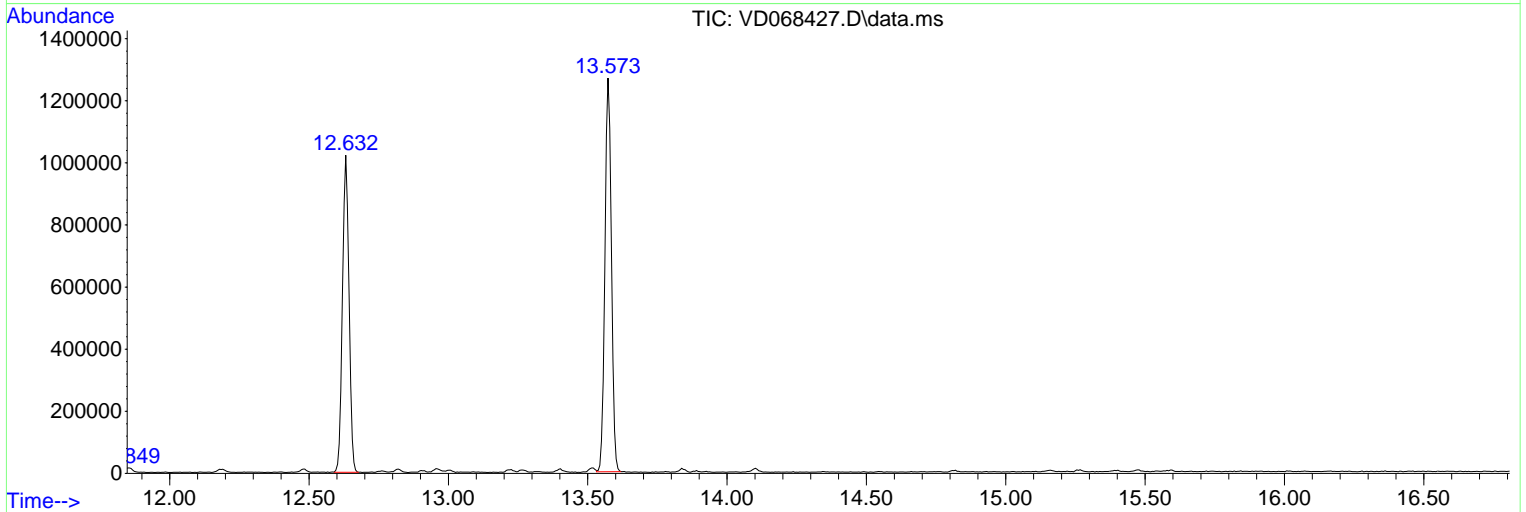
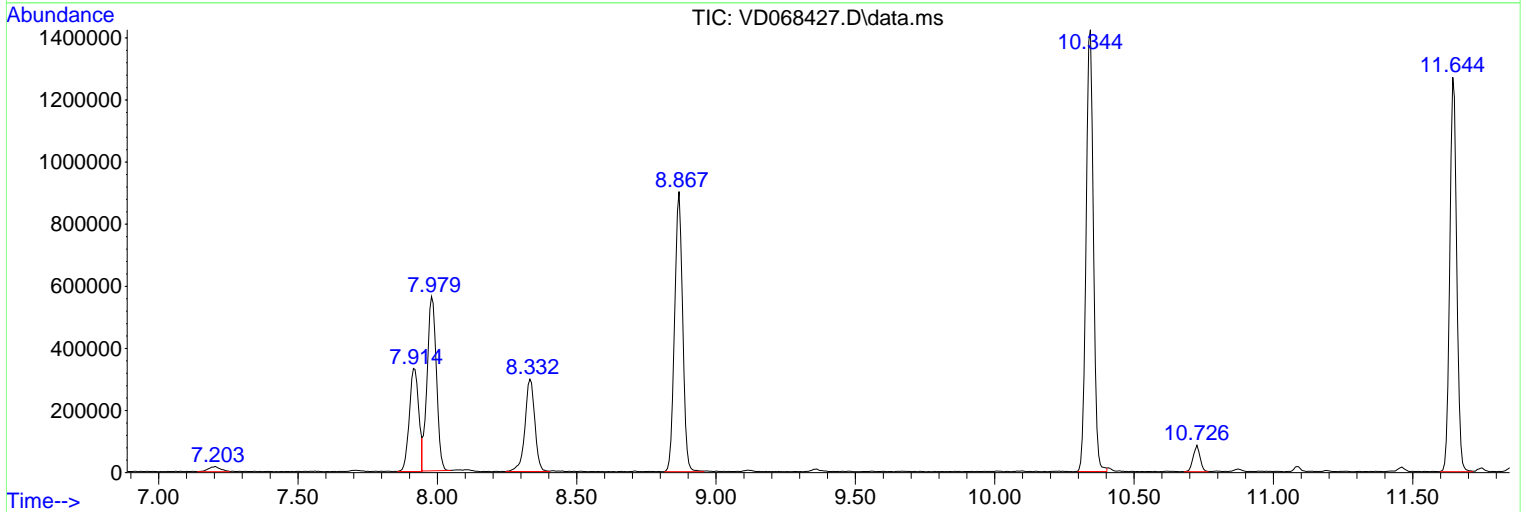
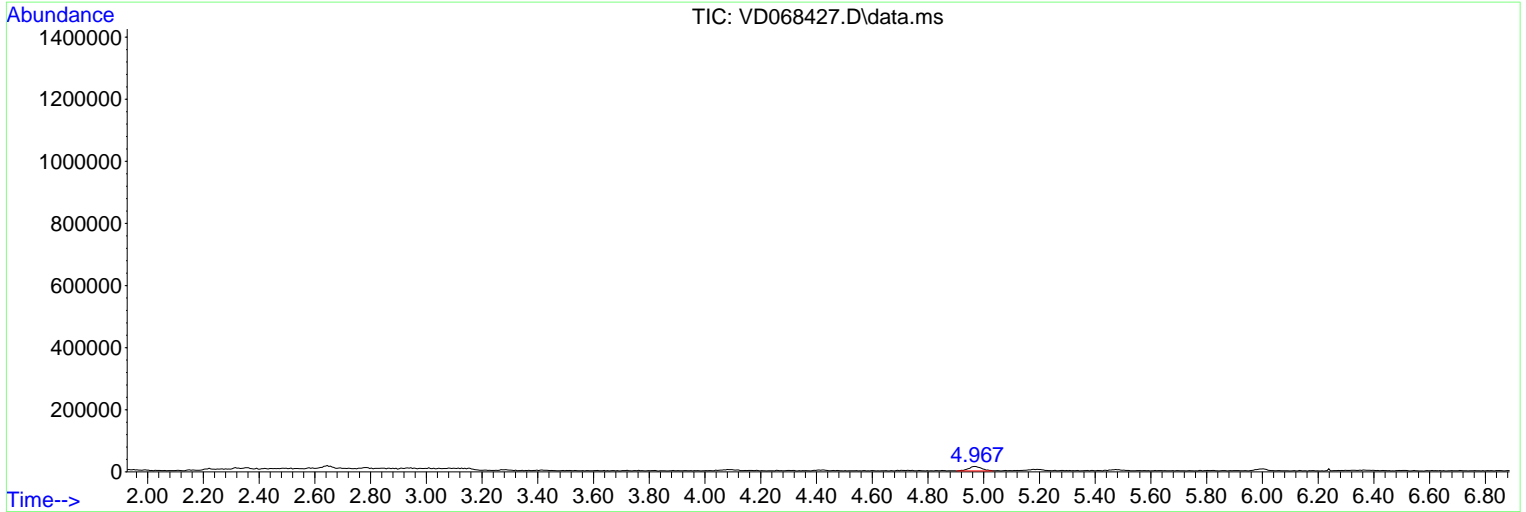
Sum of corrected areas: 13389514

Data Path : Z:\voasrv\HPCHEM1\MSVOA_D\Data\VD022421\
 Data File : VD068427.D
 Acq On : 24 Feb 2021 10:16
 Operator : VA/SY
 Sample : VD0224SBL01
 Misc : 5.00G/5.00ml/MSVOA_D/SOIL
 ALS Vial : 3 Sample Multiplier: 1

Instrument :
 MSVOA_D
ClientSampleId :
 VD0224SBL01

Quant Method : Z:\voasrv\HPCHEM1\MSVOA_D\Method\82D021221S.M
 Quant Title : SW846 8260

TIC Library : C:\Database\NIST11.L
 TIC Integration Parameters: LSCINT.P



Library Search Compound Report

Data Path : Z:\voasrv\HPCHEM1\MSVOA_D\Data\VD022421\
Data File : VD068427.D
Acq On : 24 Feb 2021 10:16
Operator : VA/SY
Sample : VD0224SBL01
Misc : 5.00G/5.00ml/MSVOA_D/SOIL
ALS Vial : 3 Sample Multiplier: 1

Instrument :
MSVOA_D
ClientSampleId :
VD0224SBL01

Quant Method : Z:\voasrv\HPCHEM1\MSVOA_D\Method\82D021221S.M
Quant Title : SW846 8260

TIC Library : C:\Database\NIST11.L
TIC Integration Parameters: LSCINT.P

No Library Search Compounds Detected

Data Path : Z:\voasrv\HPCHEM1\MSVOA_D\Data\VD022421\
Data File : VD068427.D
Acq On : 24 Feb 2021 10:16
Operator : VA/SY
Sample : VD0224SBL01
Misc : 5.00G/5.00ml/MSVOA_D/SOIL
ALS Vial : 3 Sample Multiplier: 1

Instrument :
MSVOA_D
ClientSampleID :
VD0224SBL01

Quant Method : Z:\voasrv\HPCHEM1\MSVOA_D\Method\82D021221S.M
Quant Title : SW846 8260

TIC Library : C:\Database\NIST11.L
TIC Integration Parameters: LSCINT.P

TIC Top Hit name	RT	EstConc	Units	Response	--Internal Standard--			
					#	RT	Resp	Conc
