

Data Path : Z:\voasrv\HPCHEM1\MSVOA_D\Data\VD022621\
 Data File : VD068467.D
 Acq On : 26 Feb 2021 20:13
 Operator : VA/SY
 Sample : M1518-04
 Misc : 10.29G/5.00ml/MSVOA_D/SOIL
 ALS Vial : 21 Sample Multiplier: 1

Instrument :
 MSVOA_D
 ClientSampled :
 SB-4

Integration Parameters: RTEINT.P

Integrator: RTE
 Smoothing : ON Filtering: 5
 Sampling : 1 Min Area: 3 % of largest Peak
 Start Thrs: 0.2 Max Peaks: 100
 Stop Thrs : 0 Peak Location: TOP

If leading or trailing edge < 100 prefer < Baseline drop else tangent >
 Peak separation: 5

Method : Z:\voasrv\HPCHEM1\MSVOA_D\Method\82D022621S.M
 Title : SW846 8260

Signal : TIC: VD068467.D\data.ms

peak #	R.T. min	first scan	max scan	last scan	PK TY	peak height	corr. area	corr. % max.	% of total
1	2.638	117	122	132	rVB3	7456	19697	1.08%	0.207%
2	7.920	1008	1020	1025	rBV	246662	604749	33.22%	6.358%
3	7.985	1025	1031	1041	rVB	390222	877200	48.19%	9.223%
4	8.332	1080	1090	1102	rBV	234087	537483	29.53%	5.651%
5	8.867	1171	1181	1191	rBV	619786	1241480	68.20%	13.053%
6	10.344	1423	1432	1440	rBV	996594	1820344	100.00%	19.139%
7	11.644	1644	1653	1666	rBV	916720	1591614	87.43%	16.734%
8	11.855	1682	1689	1699	rBV9	11443	28258	1.55%	0.297%
9	12.632	1812	1821	1832	rVB	759153	1216387	66.82%	12.789%
10	12.949	1869	1875	1881	rVB7	13124	27070	1.49%	0.285%
11	13.573	1973	1981	1989	rBV	958915	1546827	84.97%	16.263%

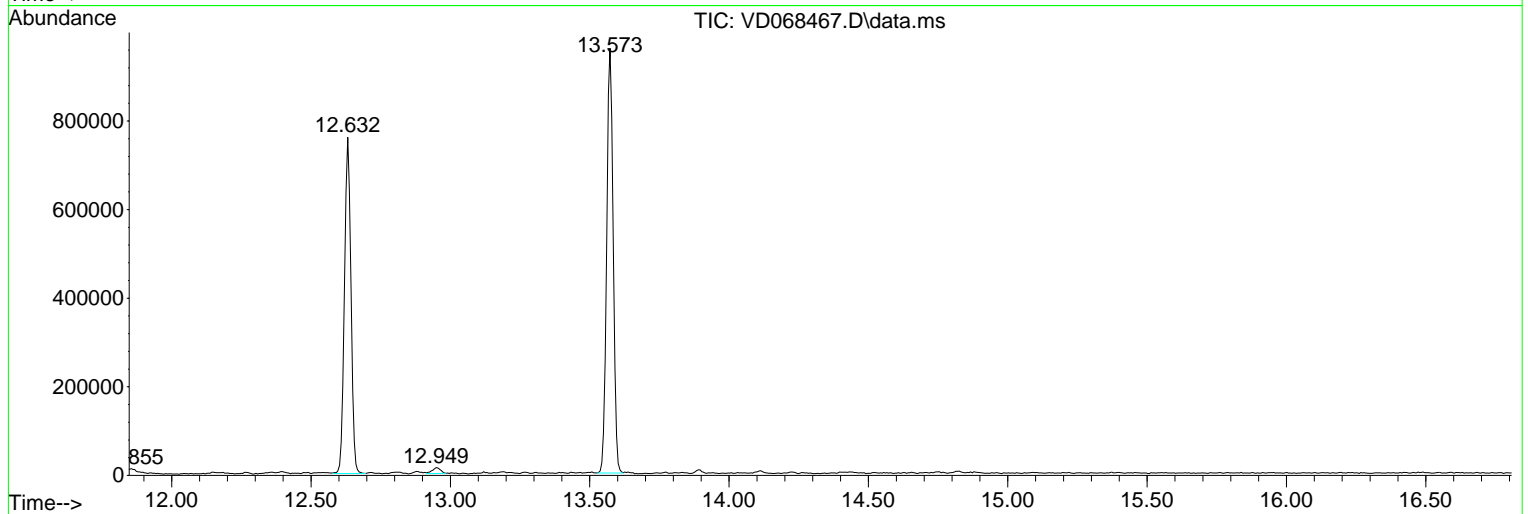
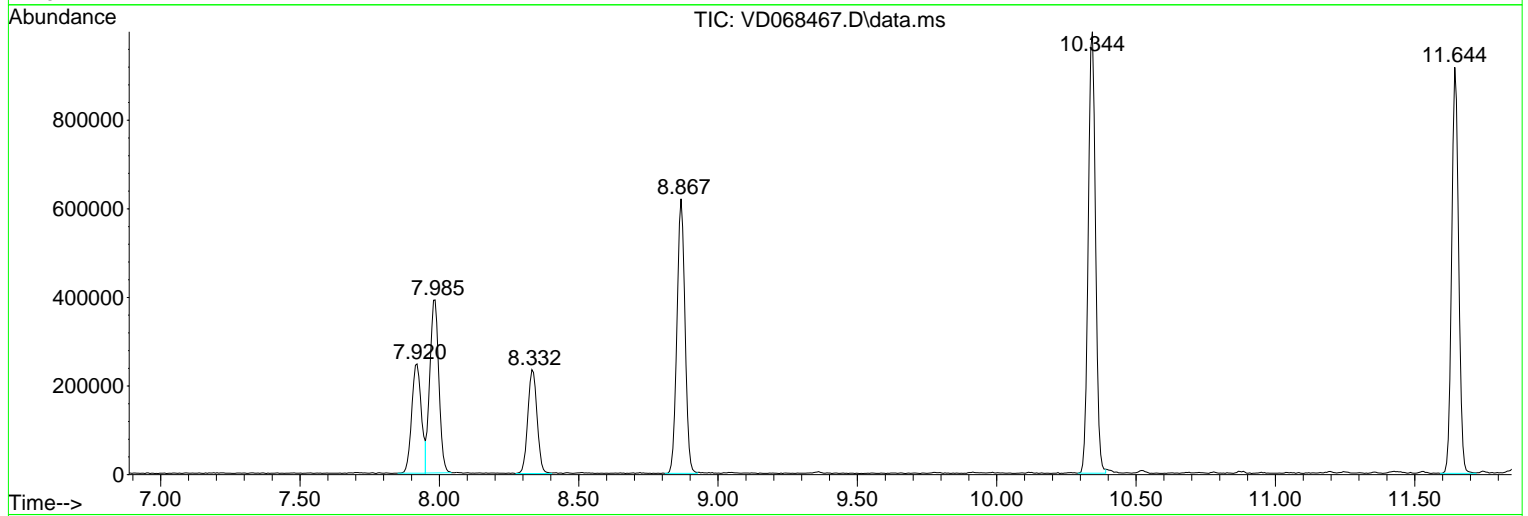
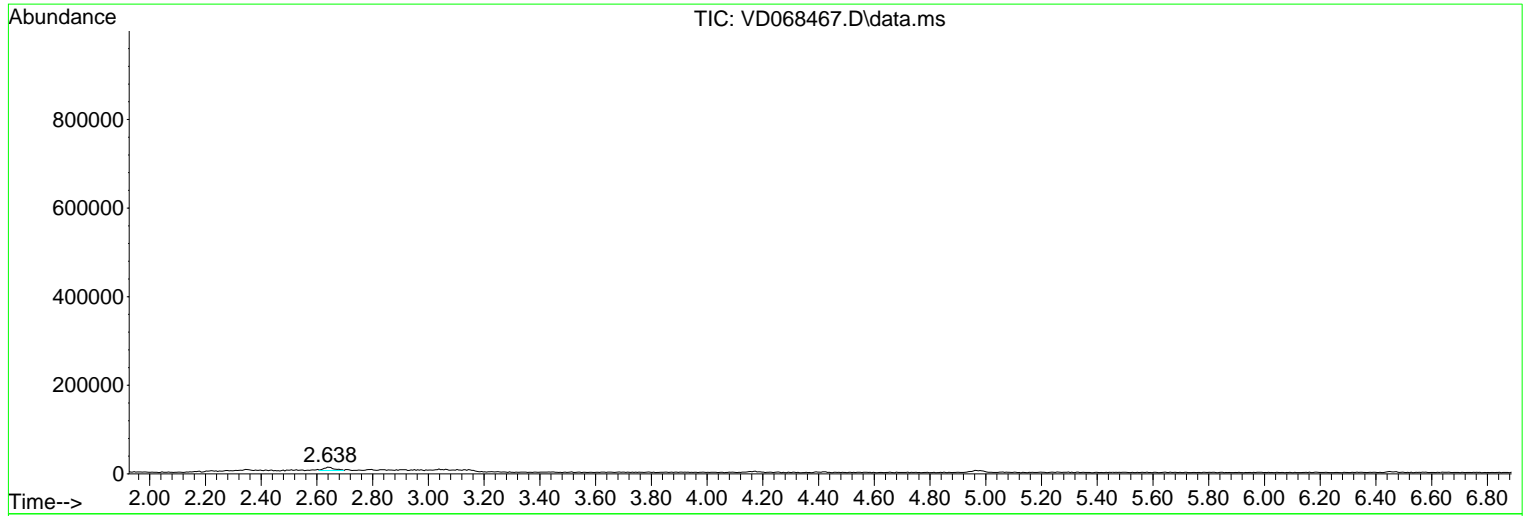
Sum of corrected areas: 9511109

Data Path : Z:\voasrv\HPCHEM1\MSVOA_D\Data\VD022621\
 Data File : VD068467.D
 Acq On : 26 Feb 2021 20:13
 Operator : VA/SY
 Sample : M1518-04
 Misc : 10.29G/5.00ml/MSVOA_D/SOIL
 ALS Vial : 21 Sample Multiplier: 1

Instrument :
 MSVOA_D
ClientSampled :
 SB-4

Quant Method : Z:\voasrv\HPCHEM1\MSVOA_D\Method\82D022621S.M
 Quant Title : SW846 8260

TIC Library : C:\Database\NIST11.L
 TIC Integration Parameters: LSCINT.P



Data Path : Z:\voasrv\HPCHEM1\MSVOA_D\Data\VD022621\
Data File : VD068467.D
Acq On : 26 Feb 2021 20:13
Operator : VA/SY
Sample : M1518-04
Misc : 10.29G/5.00ml/MSVOA_D/SOIL
ALS Vial : 21 Sample Multiplier: 1

Instrument :
MSVOA_D
ClientSampleId :
SB-4

Quant Method : Z:\voasrv\HPCHEM1\MSVOA_D\Method\82D022621S.M
Quant Title : SW846 8260

TIC Library : C:\Database\NIST11.L
TIC Integration Parameters: LSCINT.P

No Library Search Compounds Detected

Data Path : Z:\voasrv\HPCHEM1\MSVOA_D\Data\VD022621\
Data File : VD068467.D
Acq On : 26 Feb 2021 20:13
Operator : VA/SY
Sample : M1518-04
Misc : 10.29G/5.00ml/MSVOA_D/SOIL
ALS Vial : 21 Sample Multiplier: 1

Instrument :
MSVOA_D
ClientSampled :
SB-4

Quant Method : Z:\voasrv\HPCHEM1\MSVOA_D\Method\82D022621S.M
Quant Title : SW846 8260

TIC Library : C:\Database\NIST11.L
TIC Integration Parameters: LSCINT.P

TIC Top Hit name	RT	EstConc	Units	Response	--Internal Standard--		
					#	RT	Resp Conc
