

Data Path : Z:\VOASRV\HPCHEM1\MSVOA D\DATA\VD030920\  
 Data File : VD065450.D  
 Acq On : 09 Mar 2020 15:23  
 Operator : VA/SY  
 Sample : L1844-06  
 Misc : 9.20G/5.00ml/MSVOA D/SOIL  
 ALS Vial : 11 Sample Multiplier: 1

Instrument :  
 MSVOA\_D  
 ClientSampleId :  
 GP-19-030520

Integration Parameters: RTEINT.P  
 Integrator: RTE  
 Smoothing : ON Filtering: 5  
 Sampling : 1 Min Area: 3 % of largest Peak  
 Start Thrs: 0.2 Max Peaks: 100  
 Stop Thrs : 0 Peak Location: TOP

If leading or trailing edge < 100 prefer < Baseline drop else tangent >  
 Peak separation: 5

Method : Z:\VOASRV\HPCHEM1\MSVOA\_D\METHOD\82D030420S.M  
 Title : SW846 8260

Signal : TIC

peak #	R.T. min	first scan	max scan	last scan	PK TY	peak height	corr. area	corr. % max.	% of total
1	7.920	1008	1020	1025	rBV	381143	911392	34.79%	7.243%
2	7.985	1025	1031	1041	rVB	595211	1327499	50.67%	10.550%
3	8.332	1081	1090	1101	rBV	324725	729225	27.83%	5.795%
4	8.867	1171	1181	1196	rBV	940165	1865372	71.20%	14.824%
5	10.344	1424	1432	1450	rBV	1471447	2620011	100.00%	20.822%
6	11.650	1645	1654	1666	rBV	1242352	2125746	81.14%	16.894%
7	12.638	1814	1822	1832	rBV	834382	1388779	53.01%	11.037%
8	13.585	1975	1983	1995	rBV	1015093	1615106	61.65%	12.835%

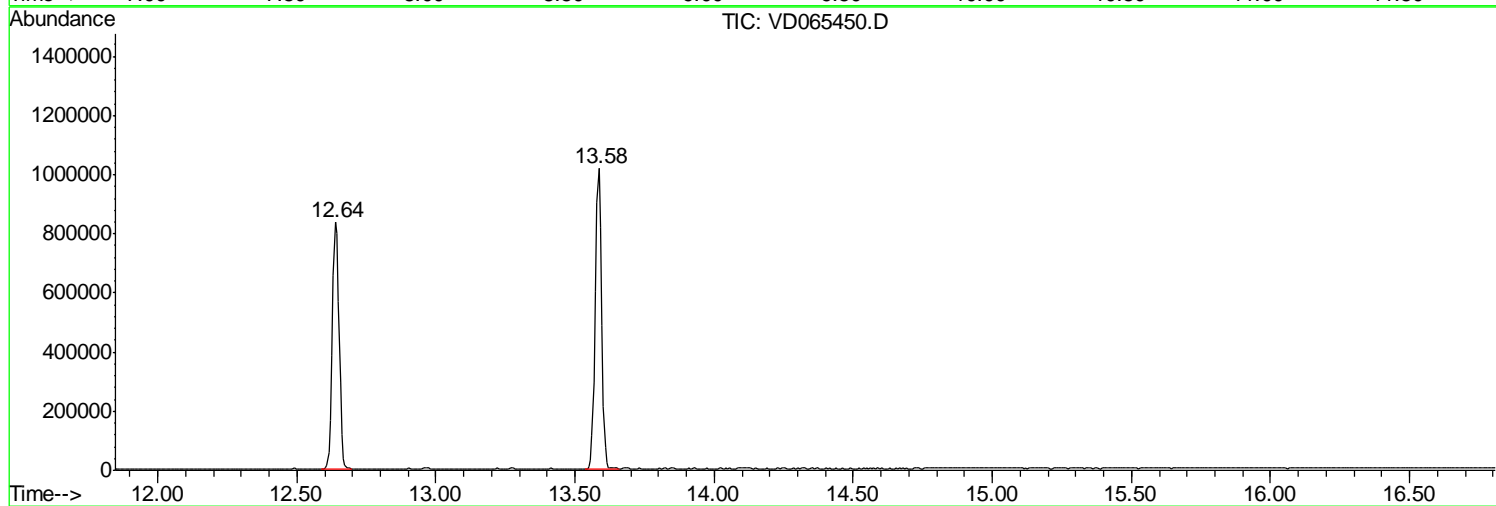
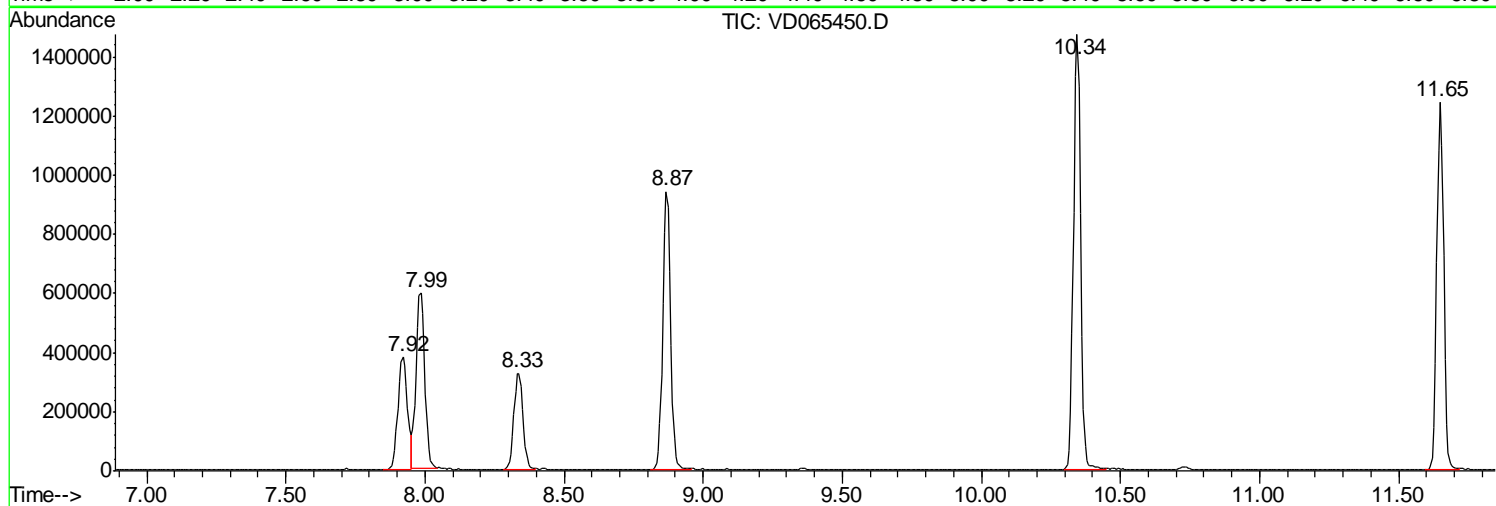
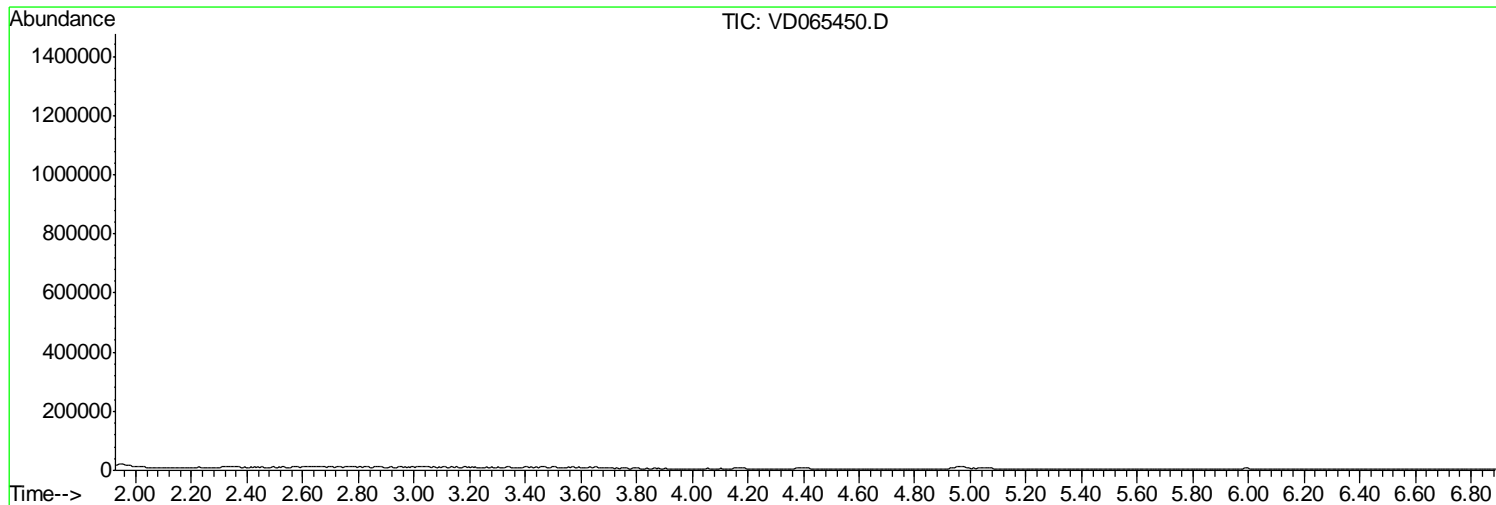
Sum of corrected areas: 12583130

Data Path : Z:\VOASRV\HPCHEM1\MSVOA D\DATA\VD030920\  
Data File : VD065450.D  
Acq On : 09 Mar 2020 15:23  
Operator : VA/SY  
Sample : L1844-06  
Misc : 9.20G/5.00ml/MSVOA D/SOIL  
ALS Vial : 11 Sample Multiplier: 1

Instrument :  
MSVOA\_D  
ClientSampleId :  
GP-19-030520

Quant Method : Z:\VOASRV\HPCHEM1\MSVOA\_D\METHOD\82D030420S.M  
Quant Title : SW846 8260

TIC Library : C:\DATABASE\NIST11.L  
TIC Integration Parameters: LSCINT.P



Data Path : Z:\VOASRV\HPCHEM1\MSVOA\_D\DATA\VD030920\  
Data File : VD065450.D  
Acq On : 09 Mar 2020 15:23  
Operator : VA/SY  
Sample : L1844-06  
Misc : 9.20G/5.00ml/MSVOA\_D/SOIL  
ALS Vial : 11 Sample Multiplier: 1

Instrument :  
MSVOA\_D  
ClientSampleId :  
GP-19-030520

Quant Method : Z:\VOASRV\HPCHEM1\MSVOA\_D\METHOD\82D030420S.M  
Quant Title : SW846 8260

TIC Library : C:\DATABASE\NIST11.L  
TIC Integration Parameters: LSCINT.P

No Library Search Compounds Detected

\*\*\*\*\*

Data Path : Z:\VOASRV\HPCHEM1\MSVOA\_D\DATA\VD030920\  
Data File : VD065450.D  
Acq On : 09 Mar 2020 15:23  
Operator : VA/SY  
Sample : L1844-06  
Misc : 9.20G/5.00ml/MSVOA\_D/SOIL  
ALS Vial : 11 Sample Multiplier: 1

Instrument :  
MSVOA\_D  
ClientSampleId :  
GP-19-030520

Quant Method : Z:\VOASRV\HPCHEM1\MSVOA\_D\METHOD\82D030420S.M  
Quant Title : SW846 8260

TIC Library : C:\DATABASE\NIST11.L  
TIC Integration Parameters: LSCINT.P

TIC Top Hit name	RT	EstConc	Units	Response	--Internal Standard--			
					#	RT	Resp	Conc

---