

Data Path : Z:\voasrv\HPCHEM1\MSVOA_D\Data\VD031221\
 Data File : VD068597.D
 Acq On : 12 Mar 2021 10:36
 Operator : VA/SY
 Sample : VD0312SBL01
 Misc : 5.00G/5.00ml/MSVOA_D/SOIL
 ALS Vial : 3 Sample Multiplier: 1

Instrument :
 MSVOA_D
 ClientSampleId :
 VD0312SBL01

Quant Time: Mar 12 23:33:32 2021
 Quant Method : Z:\voasrv\HPCHEM1\MSVOA_D\Method\82D022621S.M
 Quant Title : SW846 8260
 QLast Update : Fri Feb 26 14:04:14 2021
 Response via : Initial Calibration

Compound	R.T.	QIon	Response	Conc	Units	Dev(Min)

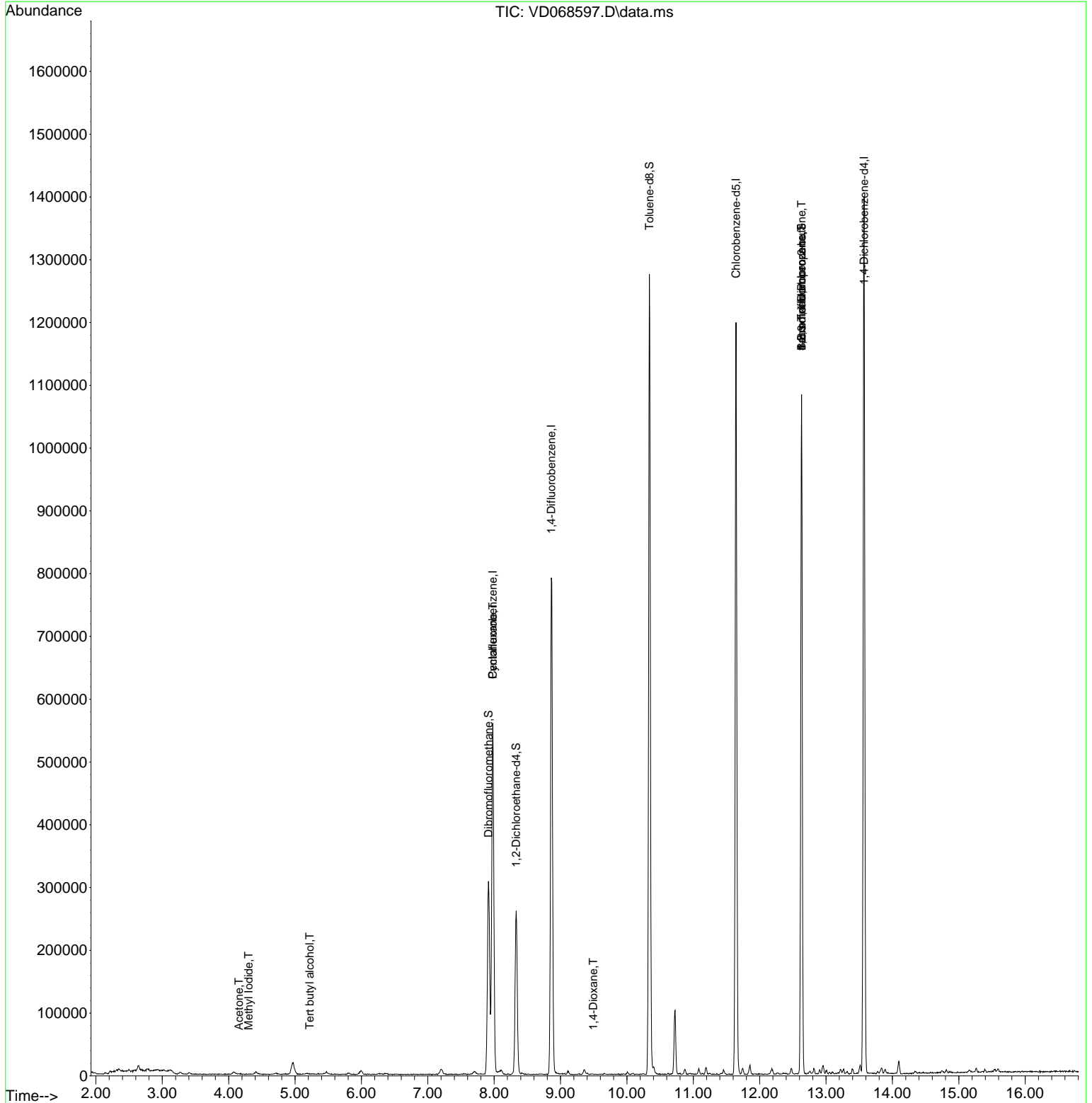
Internal Standards						
1) Pentafluorobenzene	7.979	168	421527	50.00	ug/l	0.00
34) 1,4-Difluorobenzene	8.861	114	735456	50.00	ug/l	0.00
63) Chlorobenzene-d5	11.643	117	717326	50.00	ug/l	0.00
72) 1,4-Dichlorobenzene-d4	13.573	152	386063	50.00	ug/l	0.00
System Monitoring Compounds						
33) 1,2-Dichloroethane-d4	8.332	65	208824	49.58	ug/l	0.00
Spiked Amount	50.000	Range	50 - 163	Recovery	=	99.16%
35) Dibromofluoromethane	7.914	113	224051	50.57	ug/l	0.00
Spiked Amount	50.000	Range	54 - 147	Recovery	=	101.14%
50) Toluene-d8	10.338	98	916423	51.93	ug/l	0.00
Spiked Amount	50.000	Range	49 - 140	Recovery	=	103.86%
62) 4-Bromofluorobenzene	12.632	95	320328	56.32	ug/l	0.00
Spiked Amount	50.000	Range	25 - 144	Recovery	=	112.64%
Target Compounds						
						Qvalue
10) Methyl Iodide	4.303	142	1410	2.88	ug/l #	49
11) Tert butyl alcohol	5.220	59	335	1.49	ug/l #	74
16) Acetone	4.156	43	803	1.20	ug/l #	76
20) Methylene Chloride	4.967	84	15401	Below Cal	#	84
31) Cyclohexane	7.979	56	10735	1.40	ug/l #	12
49) 1,4-Dioxane	9.491	88	62	2.08	ug/l #	30
71) Bromoform	12.632	173	2728	1.06	ug/l #	1
76) 1,2,3-Trichloropropane	12.632	75	163310	47.65	ug/l #	100
81) trans-1,4-Dichloro-2-b...	12.632	75	163310	111.20	ug/l #	14

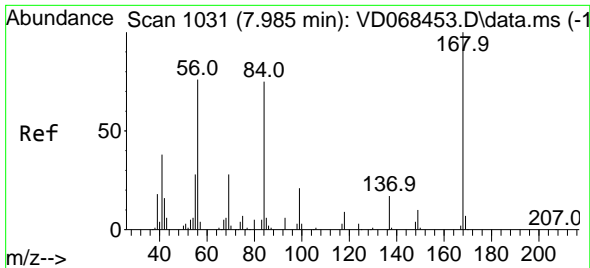
(#) = qualifier out of range (m) = manual integration (+) = signals summed

Data Path : Z:\voasrv\HPCHEM1\MSVOA_D\Data\VD031221\
 Data File : VD068597.D
 Acq On : 12 Mar 2021 10:36
 Operator : VA/SY
 Sample : VD0312SBL01
 Misc : 5.00G/5.00ml/MSVOA_D/SOIL
 ALS Vial : 3 Sample Multiplier: 1

Instrument :
 MSVOA_D
 ClientSampleId :
 VD0312SBL01

Quant Time: Mar 12 23:33:32 2021
 Quant Method : Z:\voasrv\HPCHEM1\MSVOA_D\Method\82D022621S.M
 Quant Title : SW846 8260
 QLast Update : Fri Feb 26 14:04:14 2021
 Response via : Initial Calibration

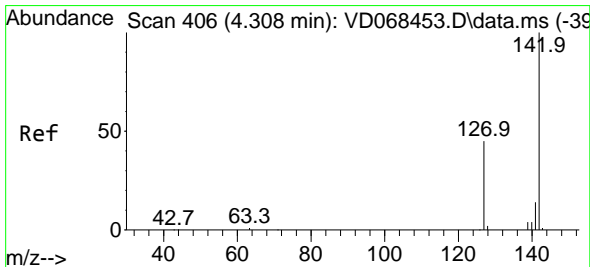
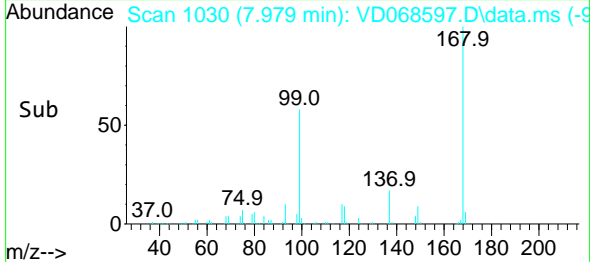
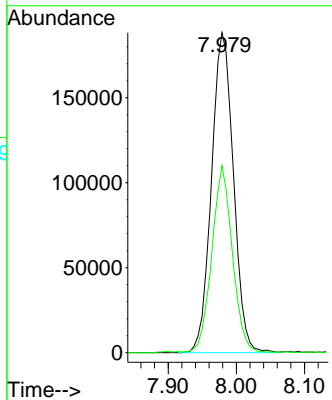
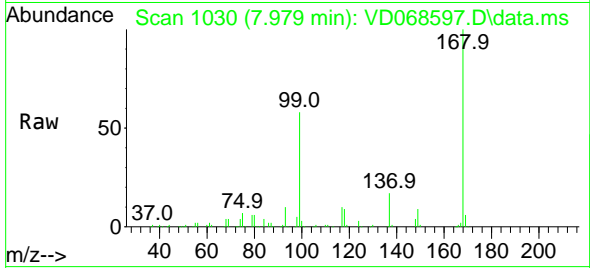




#1
 Pentafluorobenzene
 Concen: 50.00 ug/l
 RT: 7.979 min Scan# 1030
 Delta R.T. -0.006 min
 Lab File: VD068597.D
 Acq: 12 Mar 2021 10:36

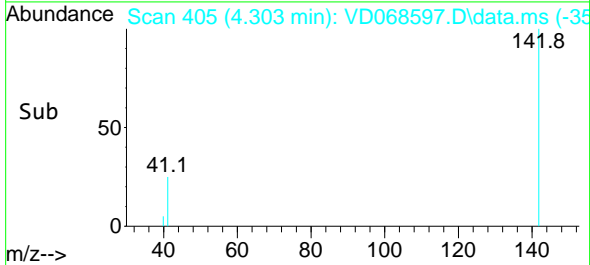
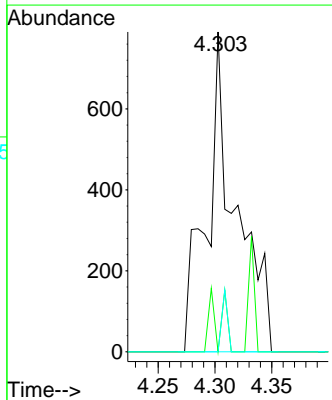
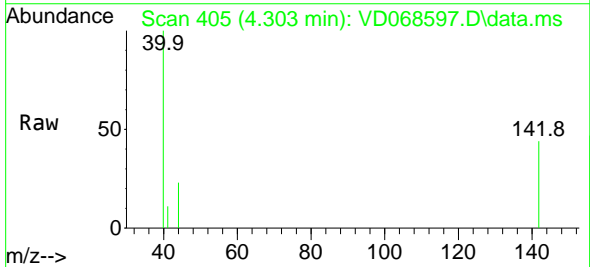
Instrument :
 MSVOA_D
 ClientSampled :
 VD0312SBL01

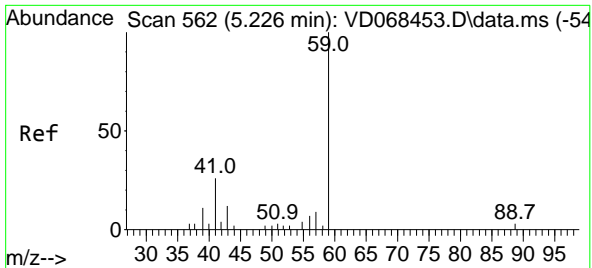
Tgt Ion:168 Resp: 421527
 Ion Ratio Lower Upper
 168 100
 99 58.2 43.5 65.3



#10
 Methyl Iodide
 Concen: 2.88 ug/l
 RT: 4.303 min Scan# 405
 Delta R.T. -0.005 min
 Lab File: VD068597.D
 Acq: 12 Mar 2021 10:36

Tgt Ion:142 Resp: 1410
 Ion Ratio Lower Upper
 142 100
 127 7.7 37.9 56.9#
 141 3.8 11.5 17.3#

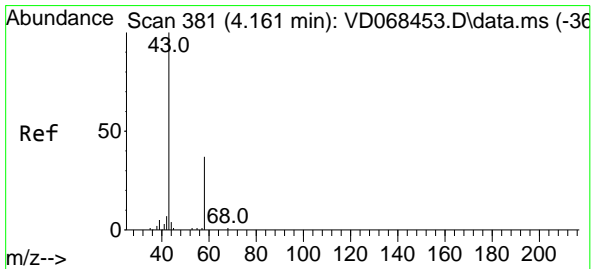
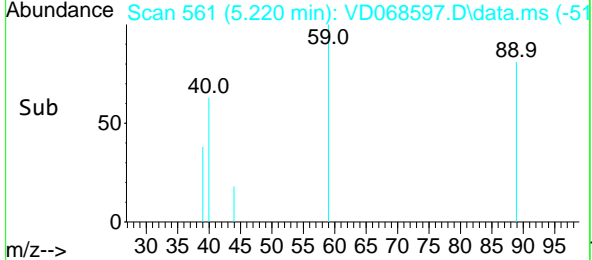
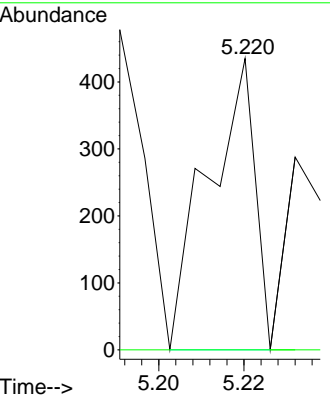
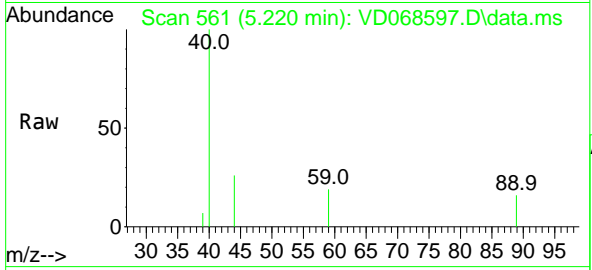




#11
 Tert butyl alcohol
 Concen: 1.49 ug/l
 RT: 5.220 min Scan# 561
 Delta R.T. -0.006 min
 Lab File: VD068597.D
 Acq: 12 Mar 2021 10:36

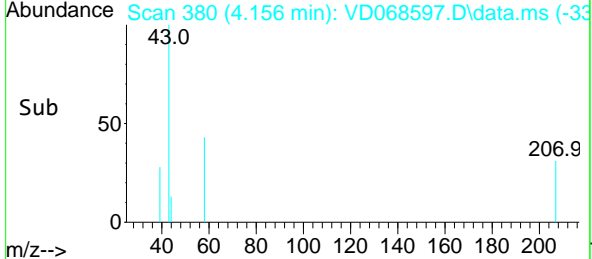
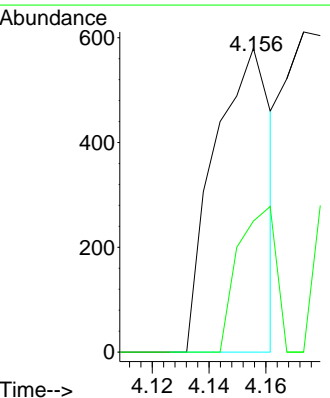
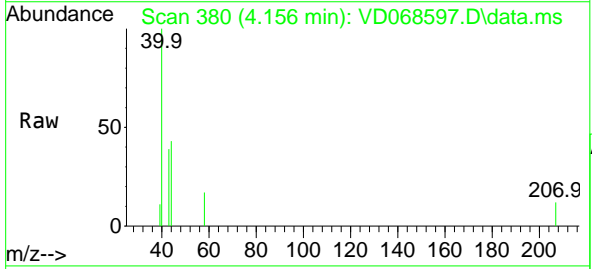
Instrument :
 MSVOA_D
 ClientSampled :
 VD0312SBL01

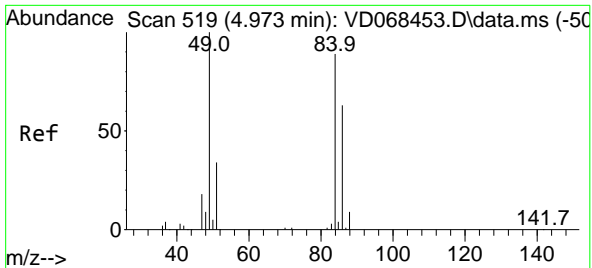
Tgt Ion: 59 Resp: 335
 Ion Ratio Lower Upper
 59 100
 57 0.0 7.4 11.2#



#16
 Acetone
 Concen: 1.20 ug/l
 RT: 4.156 min Scan# 380
 Delta R.T. -0.006 min
 Lab File: VD068597.D
 Acq: 12 Mar 2021 10:36

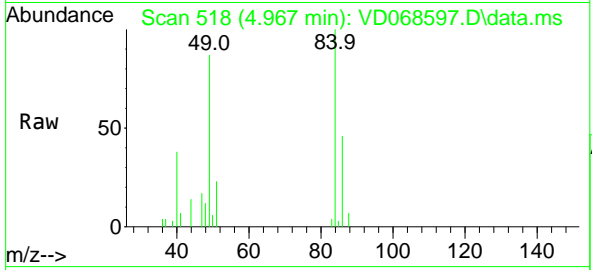
Tgt Ion: 43 Resp: 803
 Ion Ratio Lower Upper
 43 100
 58 43.1 24.2 36.4#





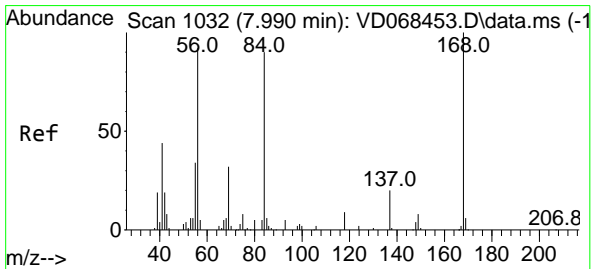
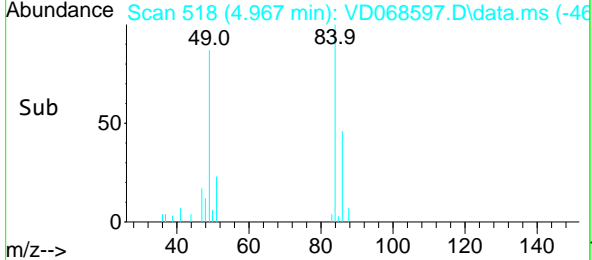
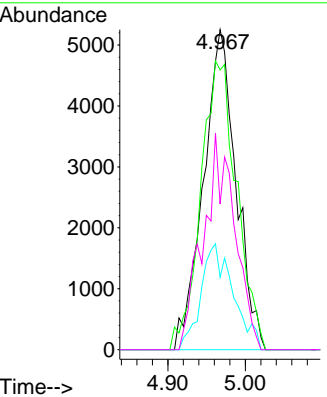
#20
 Methylene Chloride
 Concen: Below Cal
 RT: 4.967 min Scan# 518
 Delta R.T. -0.006 min
 Lab File: VD068597.D
 Acq: 12 Mar 2021 10:36

Instrument : MSVOA_D
 ClientSampled : VD0312SBL01

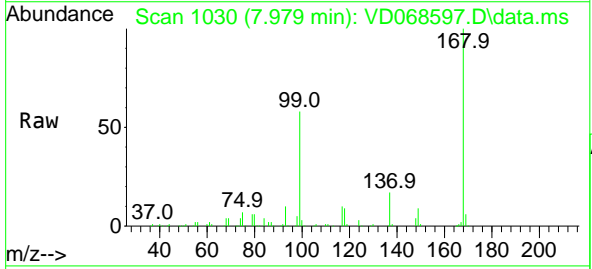


Tgt Ion: 84 Resp: 15401

Ion	Ratio	Lower	Upper
84	100		
49	87.4	77.4	116.2
51	22.7	26.1	39.1#
86	45.5	51.8	77.8#

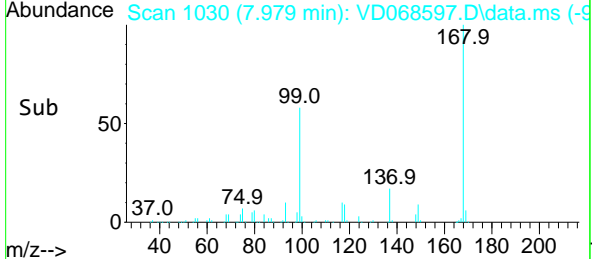
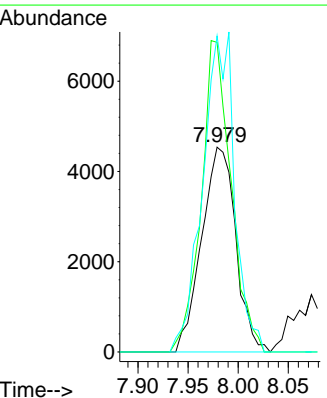


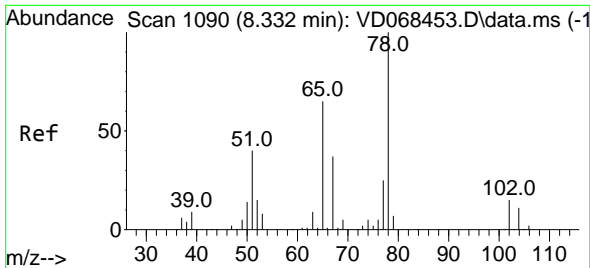
#31
 Cyclohexane
 Concen: 1.40 ug/l
 RT: 7.979 min Scan# 1030
 Delta R.T. -0.012 min
 Lab File: VD068597.D
 Acq: 12 Mar 2021 10:36



Tgt Ion: 56 Resp: 10735

Ion	Ratio	Lower	Upper
56	100		
69	151.2	30.1	45.1#
84	154.3	82.1	123.1#

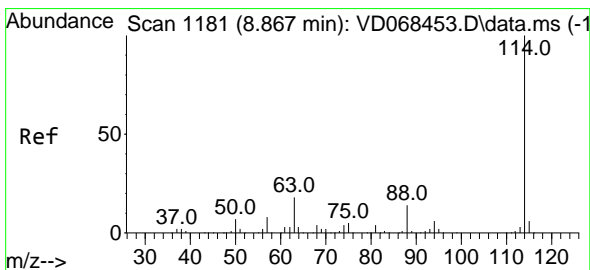
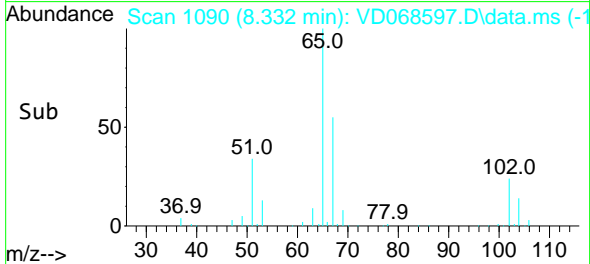
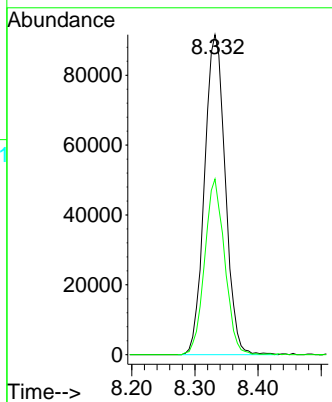
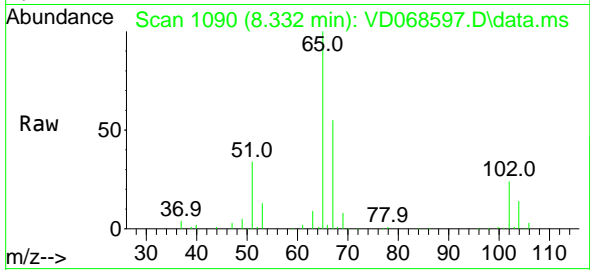




#33
 1,2-Dichloroethane-d4
 Concen: 49.58 ug/l
 RT: 8.332 min Scan# 1090
 Delta R.T. 0.000 min
 Lab File: VD068597.D
 Acq: 12 Mar 2021 10:36

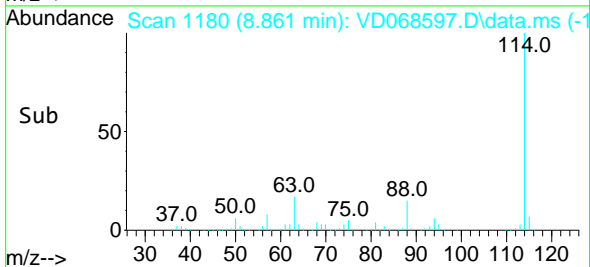
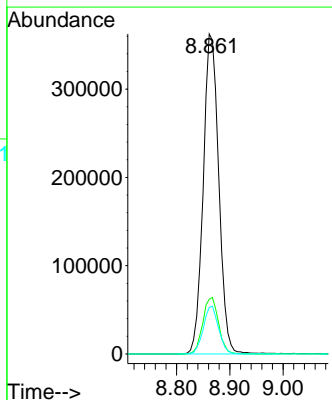
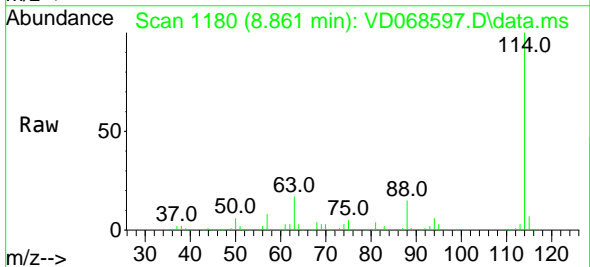
Instrument :
 MSVOA_D
 ClientSampled :
 VD0312SBL01

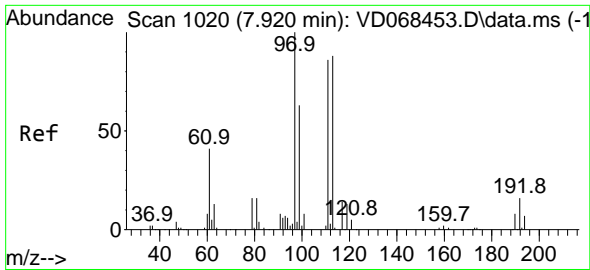
Tgt Ion: 65 Resp: 208824
 Ion Ratio Lower Upper
 65 100
 67 53.0 0.0 105.0



#34
 1,4-Difluorobenzene
 Concen: 50.00 ug/l
 RT: 8.861 min Scan# 1180
 Delta R.T. -0.006 min
 Lab File: VD068597.D
 Acq: 12 Mar 2021 10:36

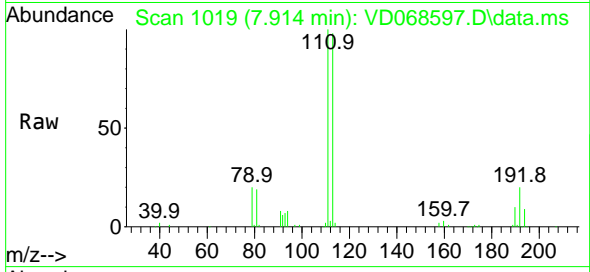
Tgt Ion: 114 Resp: 735456
 Ion Ratio Lower Upper
 114 100
 63 17.1 0.0 34.8
 88 14.5 0.0 31.6



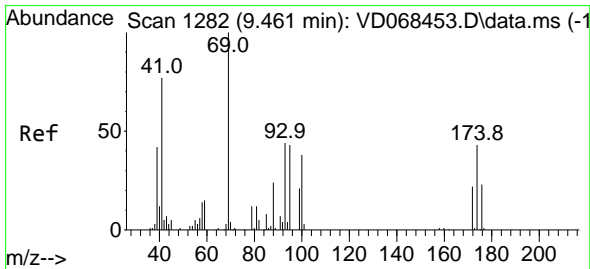
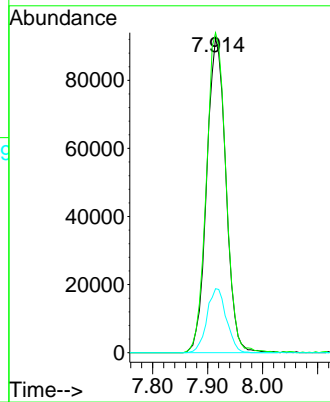
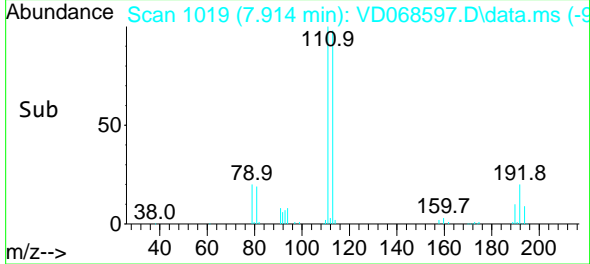


#35
 Dibromofluoromethane
 Concen: 50.57 ug/l
 RT: 7.914 min Scan# 1019
 Delta R.T. -0.006 min
 Lab File: VD068597.D
 Acq: 12 Mar 2021 10:36

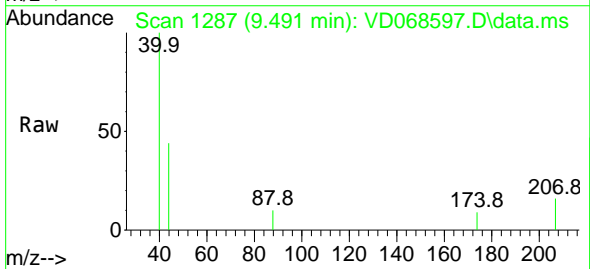
Instrument :
 MSVOA_D
 ClientSampled :
 VD0312SBL01



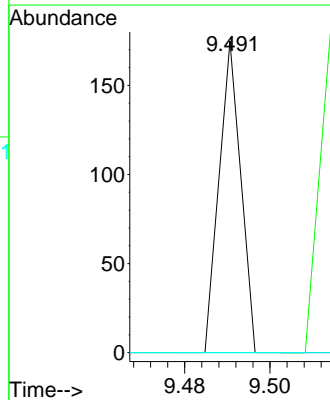
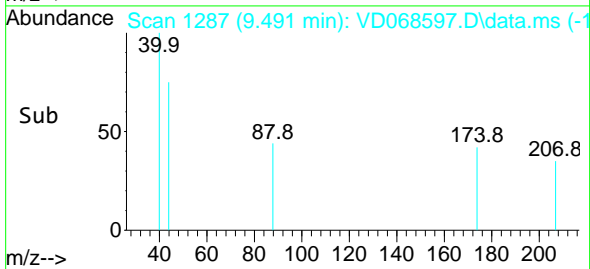
Tgt Ion:113 Resp: 224051
 Ion Ratio Lower Upper
 113 100
 111 103.7 81.4 122.0
 192 20.6 16.1 24.1

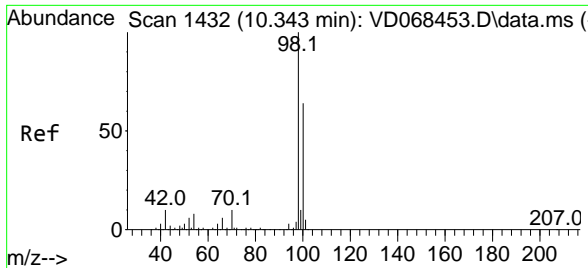


#49
 1,4-Dioxane
 Concen: 2.08 ug/l
 RT: 9.491 min Scan# 1287
 Delta R.T. 0.030 min
 Lab File: VD068597.D
 Acq: 12 Mar 2021 10:36



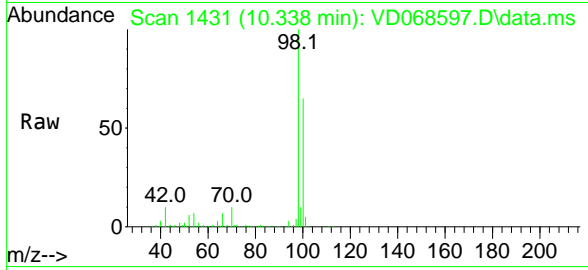
Tgt Ion: 88 Resp: 62
 Ion Ratio Lower Upper
 88 100
 43 0.0 22.1 33.1#
 58 0.0 46.7 70.1#



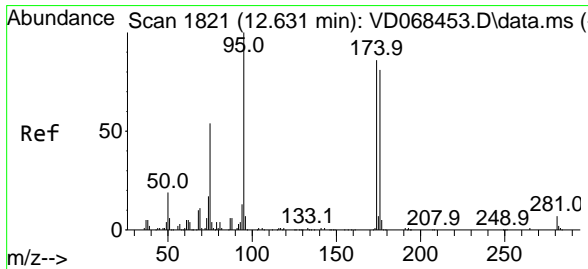
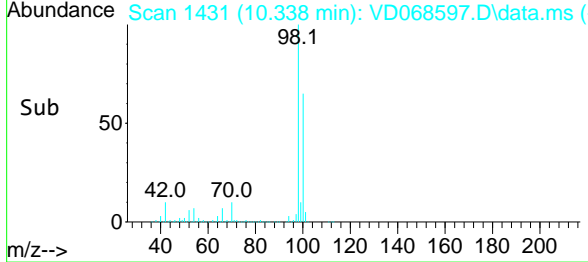
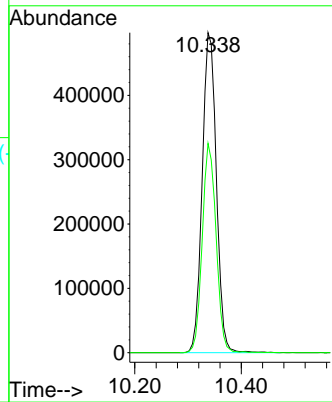


#50
 Toluene-d8
 Concen: 51.93 ug/l
 RT: 10.338 min Scan# 1431
 Delta R.T. -0.006 min
 Lab File: VD068597.D
 Acq: 12 Mar 2021 10:36

Instrument :
 MSVOA_D
ClientSampled :
 VD0312SBL01

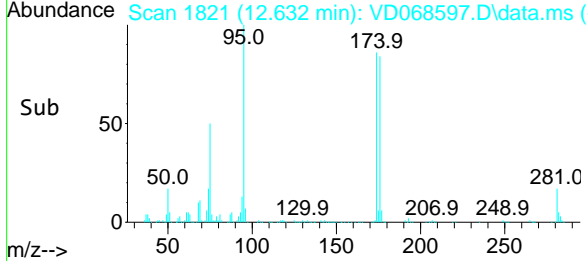
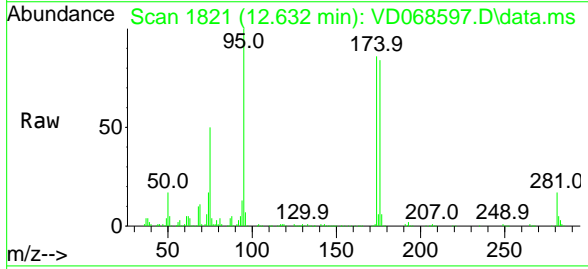
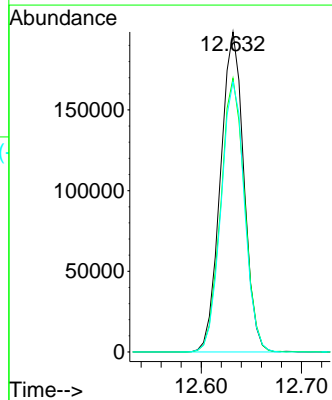


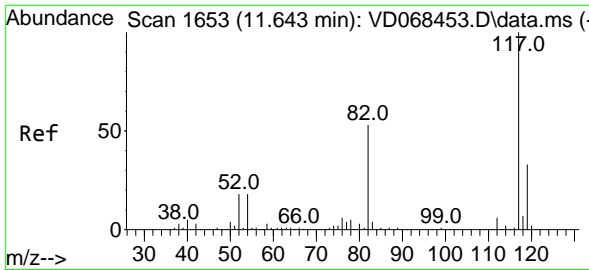
Tgt Ion: 98 Resp: 916423
 Ion Ratio Lower Upper
 98 100
 100 63.9 53.0 79.4



#62
 4-Bromofluorobenzene
 Concen: 56.32 ug/l
 RT: 12.632 min Scan# 1821
 Delta R.T. 0.000 min
 Lab File: VD068597.D
 Acq: 12 Mar 2021 10:36

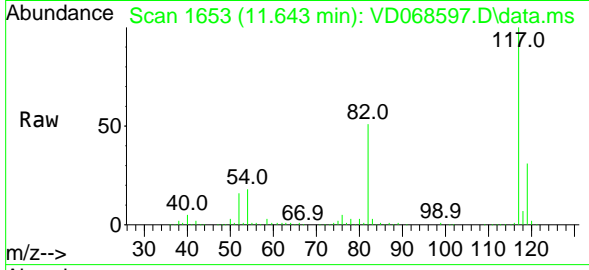
Tgt Ion: 95 Resp: 320328
 Ion Ratio Lower Upper
 95 100
 174 86.9 0.0 172.4
 176 84.7 0.0 168.4



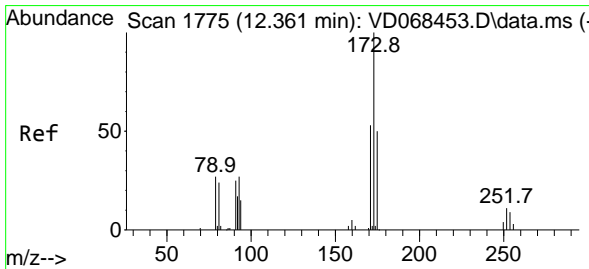
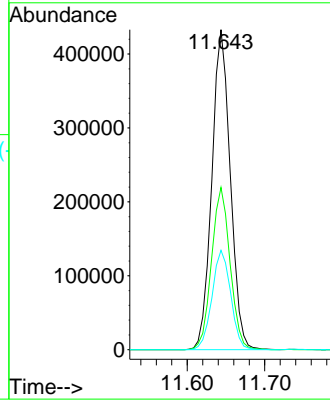
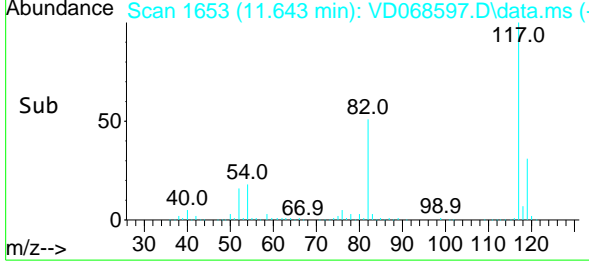


#63
 Chlorobenzene-d5
 Concen: 50.00 ug/l
 RT: 11.643 min Scan# 1653
 Delta R.T. 0.000 min
 Lab File: VD068597.D
 Acq: 12 Mar 2021 10:36

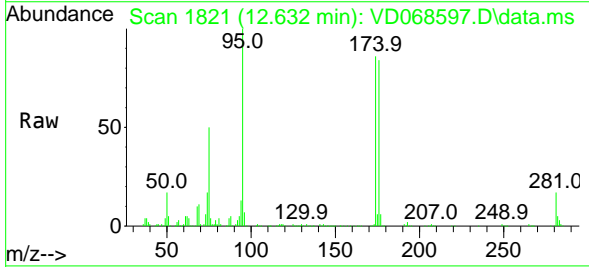
Instrument :
 MSVOA_D
 ClientSampled :
 VD0312SBL01



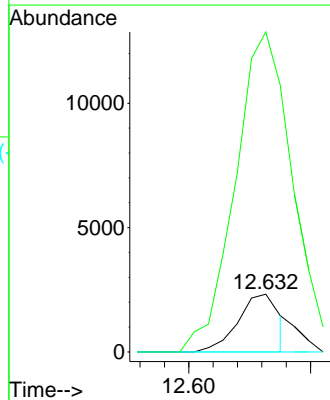
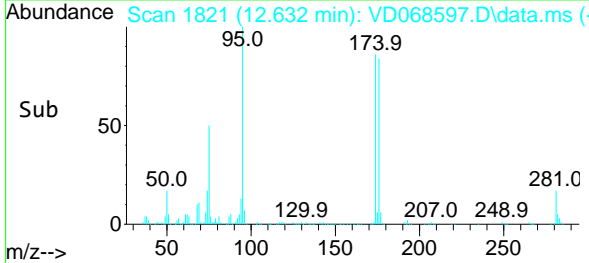
Tgt Ion:117 Resp: 717326
 Ion Ratio Lower Upper
 117 100
 82 50.7 41.4 62.0
 119 31.1 26.1 39.1

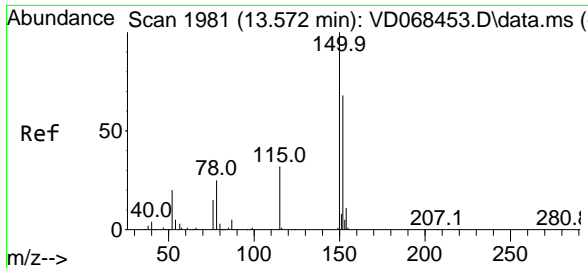


#71
 Bromoform
 Concen: 1.06 ug/l
 RT: 12.632 min Scan# 1821
 Delta R.T. 0.271 min
 Lab File: VD068597.D
 Acq: 12 Mar 2021 10:36



Tgt Ion:173 Resp: 2728
 Ion Ratio Lower Upper
 173 100
 175 626.2 24.6 73.8#
 254 0.0 0.0 0.0

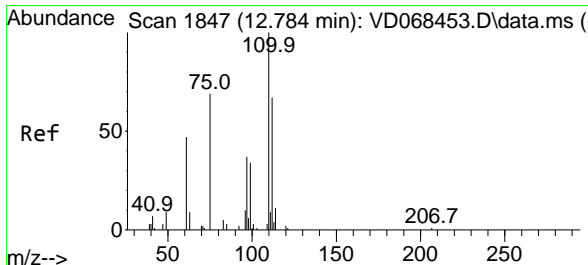
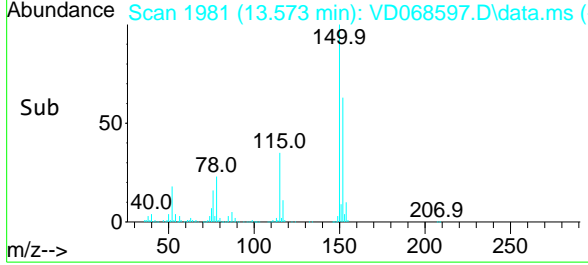
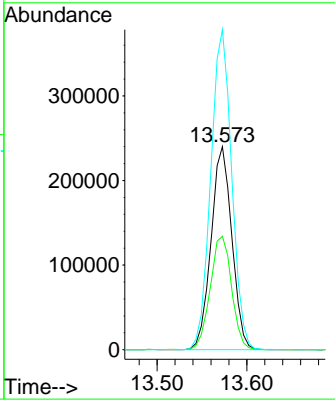
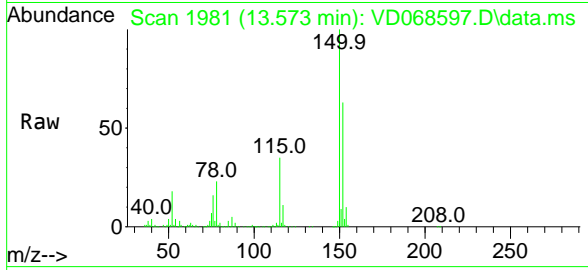




#72
 1,4-Dichlorobenzene-d4
 Concen: 50.00 ug/l
 RT: 13.573 min Scan# 1981
 Delta R.T. 0.001 min
 Lab File: VD068597.D
 Acq: 12 Mar 2021 10:36

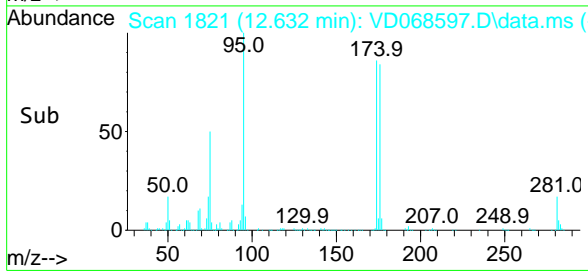
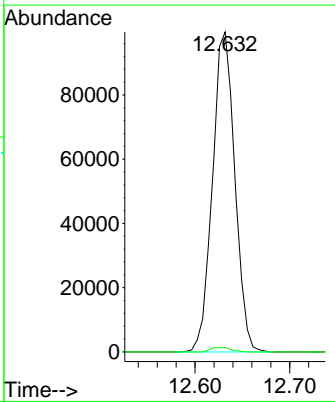
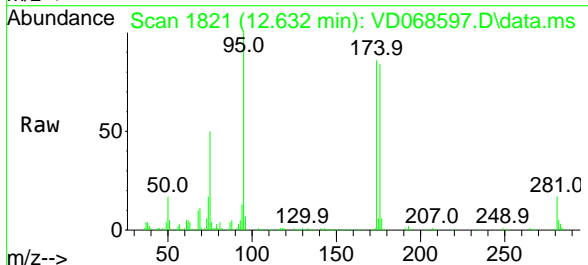
Instrument :
 MSVOA_D
 ClientSampled :
 VD0312SBL01

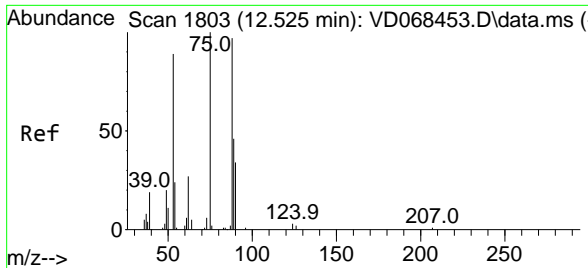
Tgt Ion	Resp	Lower	Upper
152	386063		
100	100		
115	57.3	28.9	86.8
150	158.5	0.0	344.4



#76
 1,2,3-Trichloropropane
 Concen: 47.65 ug/l
 RT: 12.632 min Scan# 1821
 Delta R.T. -0.152 min
 Lab File: VD068597.D
 Acq: 12 Mar 2021 10:36

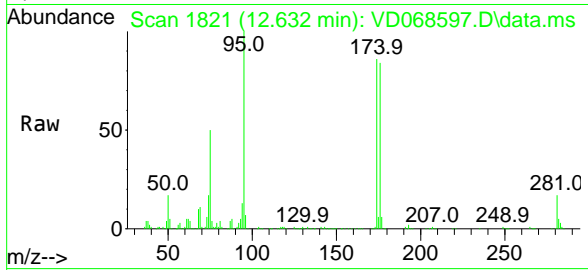
Tgt Ion	Resp	Lower	Upper
75	163310		
100	100		
77	1.3	0.0	0.0#





#81
 trans-1,4-Dichloro-2-butene
 Concen: 111.20 ug/l
 RT: 12.632 min Scan# 1821
 Delta R.T. 0.106 min
 Lab File: VD068597.D
 Acq: 12 Mar 2021 10:36

Instrument :
 MSVOA_D
 ClientSampled :
 VD0312SBL01



Tgt Ion: 75 Resp: 163310

Ion	Ratio	Lower	Upper
75	100		
53	0.0	70.2	105.2#
89	0.2	40.3	60.5#

