

Data Path : Z:\voasrv\HPCHEM1\MSVOA_D\Data\VD031221\
 Data File : VD068605.D
 Acq On : 12 Mar 2021 14:37
 Operator : VA/SY
 Sample : M1649-01RE
 Misc : 6.57G/5.00ml/MSVOA_D/SOIL
 ALS Vial : 11 Sample Multiplier: 1

Instrument :
 MSVOA_D
 ClientSampled :
 SP-1-1

Quant Time: Mar 12 23:35:43 2021
 Quant Method : Z:\voasrv\HPCHEM1\MSVOA_D\Method\82D022621S.M
 Quant Title : SW846 8260
 QLast Update : Fri Feb 26 14:04:14 2021
 Response via : Initial Calibration

Compound	R.T.	QIon	Response	Conc	Units	Dev(Min)

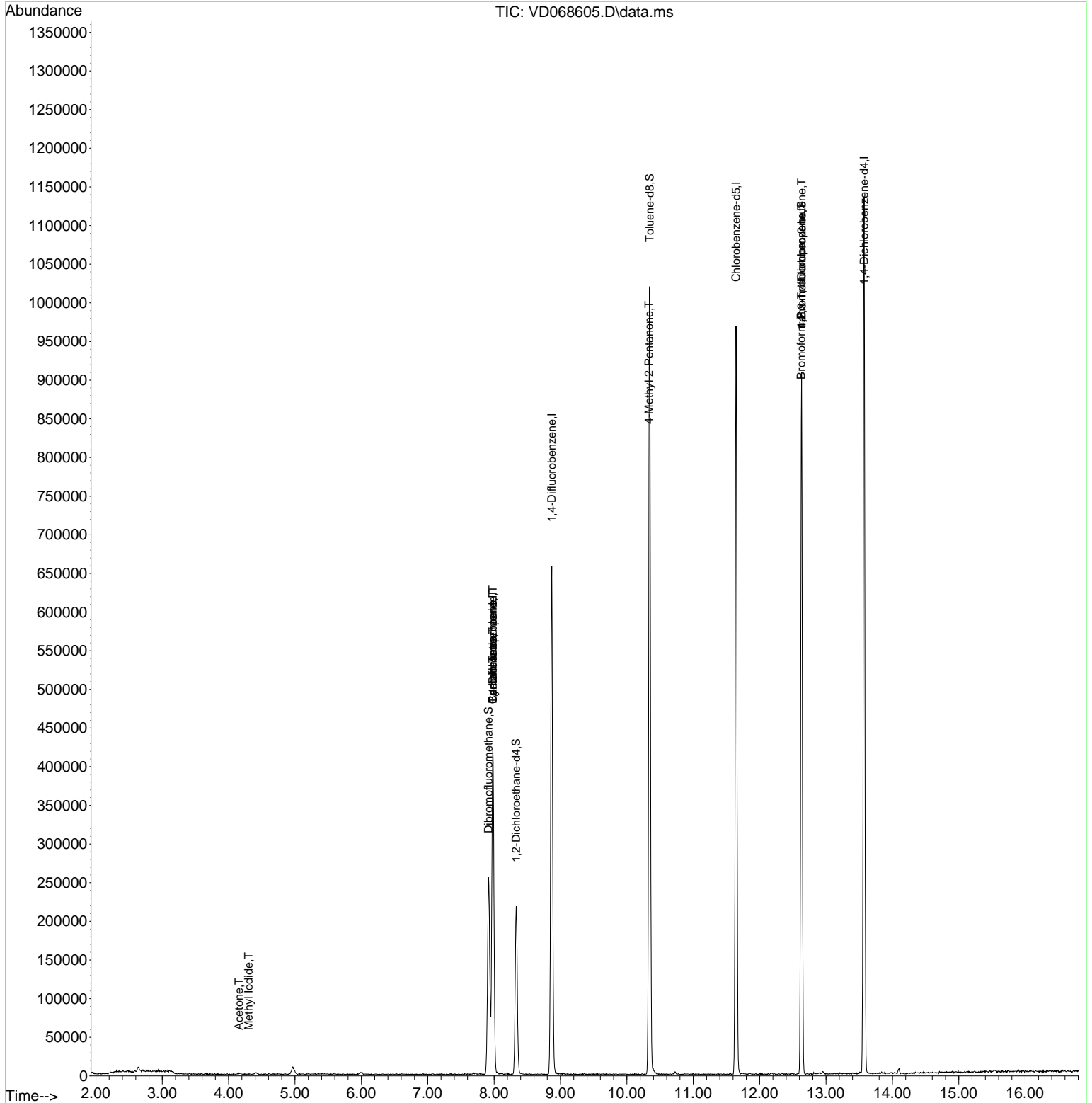
Internal Standards						
1) Pentafluorobenzene	7.979	168	321650	50.00	ug/l	0.00
34) 1,4-Difluorobenzene	8.867	114	590413	50.00	ug/l	0.00
63) Chlorobenzene-d5	11.644	117	579323	50.00	ug/l	0.00
72) 1,4-Dichlorobenzene-d4	13.573	152	315454	50.00	ug/l	0.00
System Monitoring Compounds						
33) 1,2-Dichloroethane-d4	8.332	65	171764	53.45	ug/l	0.00
Spiked Amount	50.000	Range	50 - 163	Recovery	=	106.90%
35) Dibromofluoromethane	7.914	113	181410	51.01	ug/l	0.00
Spiked Amount	50.000	Range	54 - 147	Recovery	=	102.02%
50) Toluene-d8	10.344	98	738666	52.14	ug/l	0.00
Spiked Amount	50.000	Range	49 - 140	Recovery	=	104.28%
62) 4-Bromofluorobenzene	12.632	95	257375	56.37	ug/l	0.00
Spiked Amount	50.000	Range	25 - 144	Recovery	=	112.74%
Target Compounds						
						Qvalue
10) Methyl Iodide	4.303	142	59	2.63	ug/l #	38
16) Acetone	4.156	43	1820	3.57	ug/l #	44
20) Methylene Chloride	4.967	84	8455	Below Cal	#	70
31) Cyclohexane	7.979	56	6469	1.11	ug/l #	1
36) 1,1-Dichloropropene	7.979	75	24903	4.44	ug/l #	47
38) Carbon Tetrachloride	7.979	117	31529	5.98	ug/l #	19
51) 4-Methyl-2-Pentanone	10.332	43	2627	1.47	ug/l #	1
71) Bromoform	12.626	173	2133	1.02	ug/l #	1
76) 1,2,3-Trichloropropane	12.632	75	132241	47.22	ug/l #	100
81) trans-1,4-Dichloro-2-b...	12.632	75	132241	110.20	ug/l #	14

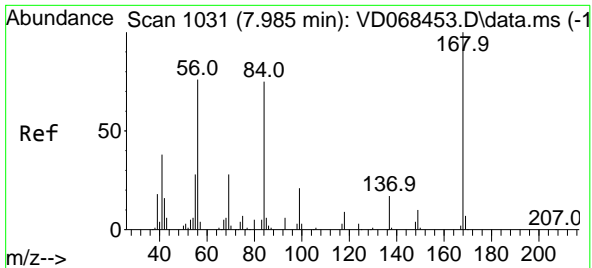
(#) = qualifier out of range (m) = manual integration (+) = signals summed

Data Path : Z:\voasrv\HPCHEM1\MSVOA_D\Data\VD031221\
 Data File : VD068605.D
 Acq On : 12 Mar 2021 14:37
 Operator : VA/SY
 Sample : M1649-01RE
 Misc : 6.57G/5.00ml/MSVOA_D/SOIL
 ALS Vial : 11 Sample Multiplier: 1

Instrument :
 MSVOA_D
 ClientSampled :
 SP-1-1

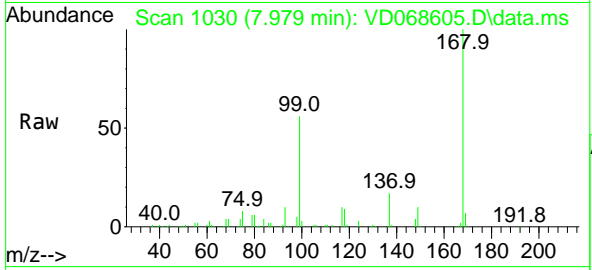
Quant Time: Mar 12 23:35:43 2021
 Quant Method : Z:\voasrv\HPCHEM1\MSVOA_D\Method\82D022621S.M
 Quant Title : SW846 8260
 QLast Update : Fri Feb 26 14:04:14 2021
 Response via : Initial Calibration



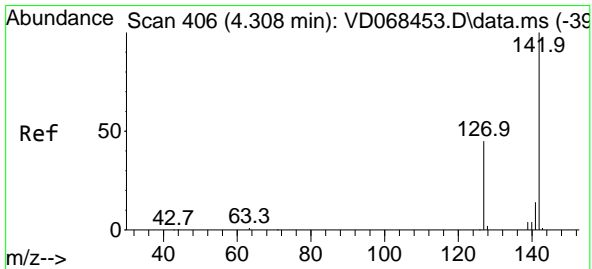
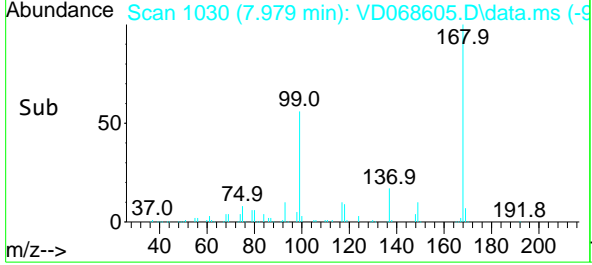
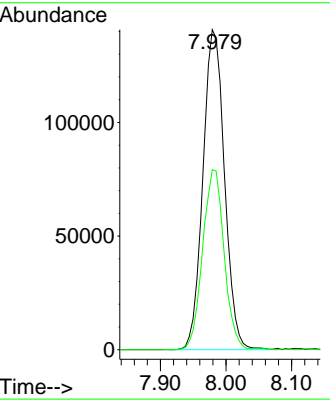


#1
 Pentafluorobenzene
 Concen: 50.00 ug/l
 RT: 7.979 min Scan# 1030
 Delta R.T. -0.006 min
 Lab File: VD068605.D
 Acq: 12 Mar 2021 14:37

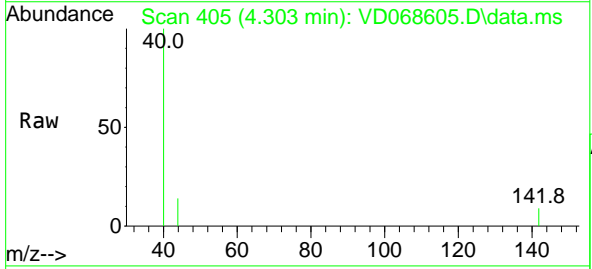
Instrument :
 MSVOA_D
 ClientSampled :
 SP-1-1



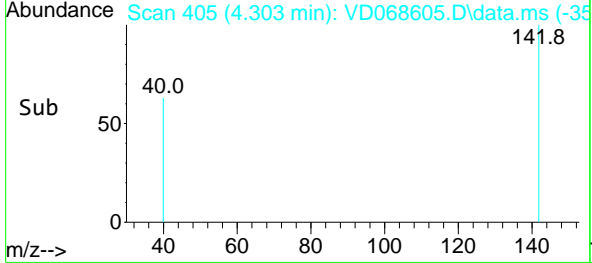
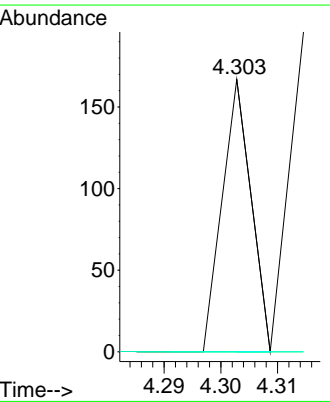
Tgt Ion:168 Resp: 321650
 Ion Ratio Lower Upper
 168 100
 99 56.3 43.5 65.3

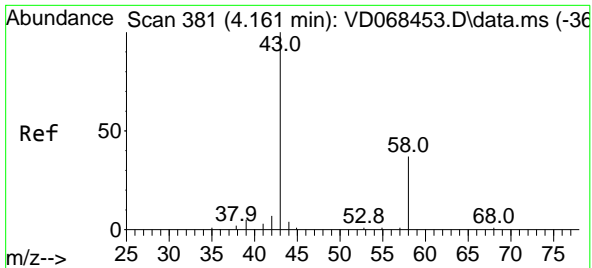


#10
 Methyl Iodide
 Concen: 2.63 ug/l
 RT: 4.303 min Scan# 405
 Delta R.T. -0.005 min
 Lab File: VD068605.D
 Acq: 12 Mar 2021 14:37



Tgt Ion:142 Resp: 59
 Ion Ratio Lower Upper
 142 100
 127 0.0 37.9 56.9#
 141 0.0 11.5 17.3#

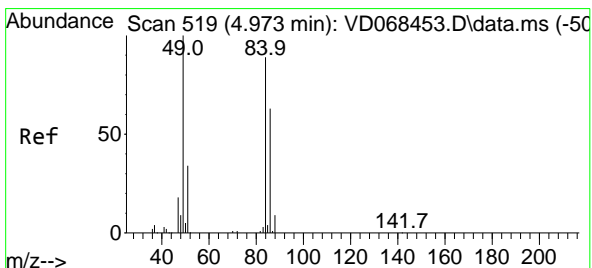
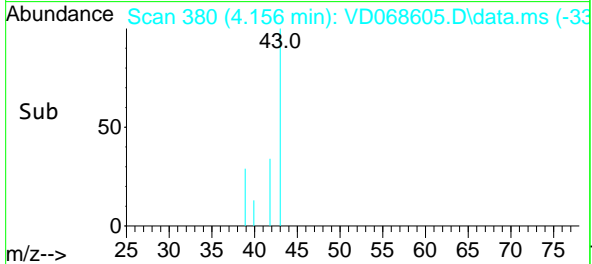
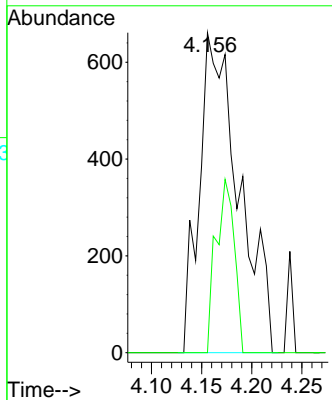
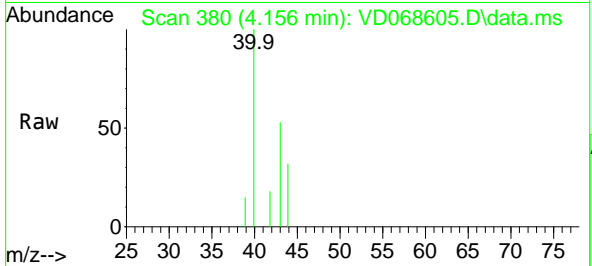




#16
 Acetone
 Concen: 3.57 ug/l
 RT: 4.156 min Scan# 380
 Delta R.T. -0.005 min
 Lab File: VD068605.D
 Acq: 12 Mar 2021 14:37

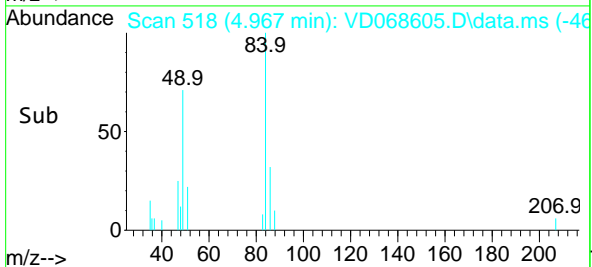
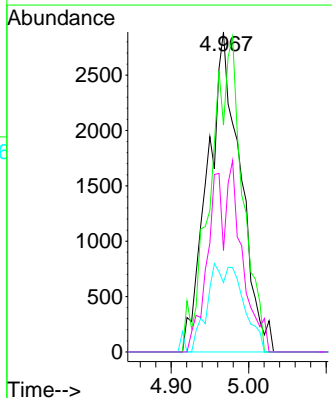
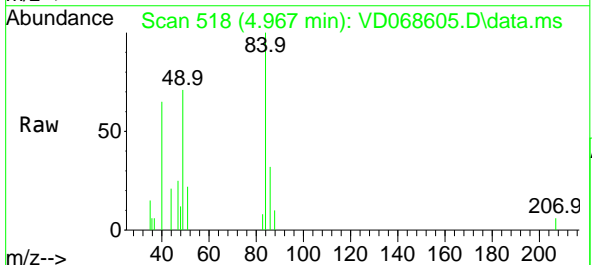
Instrument :
 MSVOA_D
 ClientSampled :
 SP-1-1

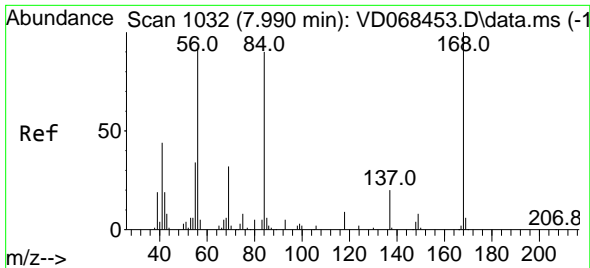
Tgt Ion	Resp	Ion Ratio	Lower	Upper
43	1820	100		
58		0.0	24.2	36.4#



#20
 Methylene Chloride
 Concen: Below Cal
 RT: 4.967 min Scan# 518
 Delta R.T. -0.006 min
 Lab File: VD068605.D
 Acq: 12 Mar 2021 14:37

Tgt Ion	Resp	Ion Ratio	Lower	Upper
84	8455	100		
49		70.9	77.4	116.2#
51		21.7	26.1	39.1#
86		31.8	51.8	77.8#

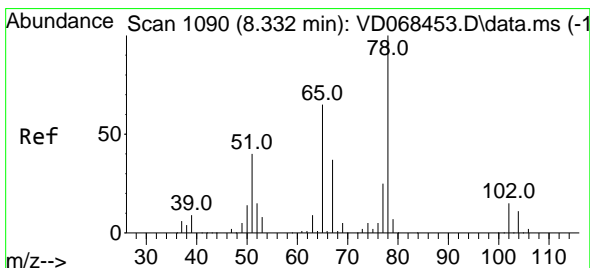
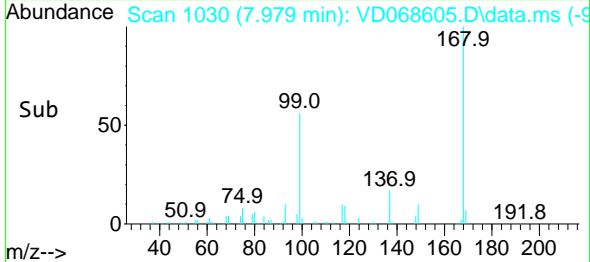
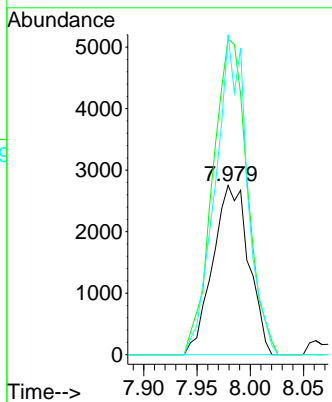
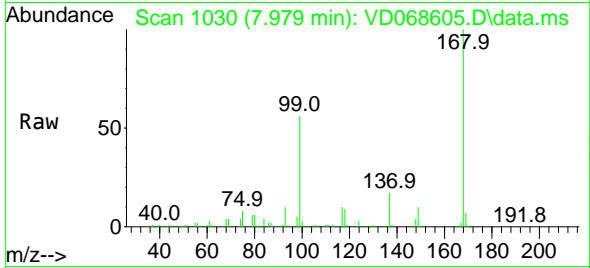




#31
 Cyclohexane
 Concen: 1.11 ug/l
 RT: 7.979 min Scan# 1030
 Delta R.T. -0.011 min
 Lab File: VD068605.D
 Acq: 12 Mar 2021 14:37

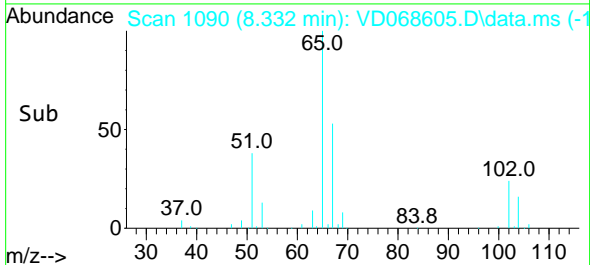
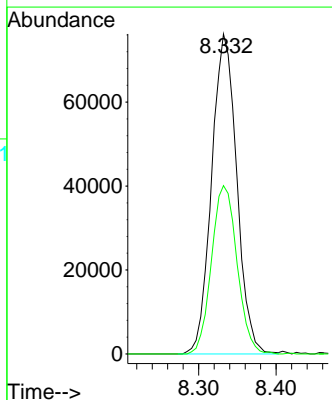
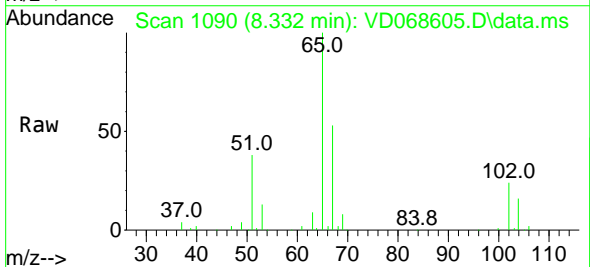
Instrument :
 MSVOA_D
 ClientSampled :
 SP-1-1

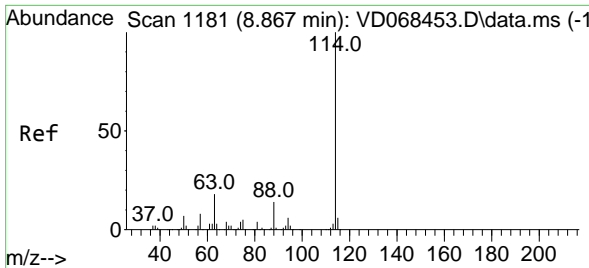
Tgt Ion: 56 Resp: 6469
 Ion Ratio Lower Upper
 56 100
 69 186.5 30.1 45.1#
 84 189.1 82.1 123.1#



#33
 1,2-Dichloroethane-d4
 Concen: 53.45 ug/l
 RT: 8.332 min Scan# 1090
 Delta R.T. 0.000 min
 Lab File: VD068605.D
 Acq: 12 Mar 2021 14:37

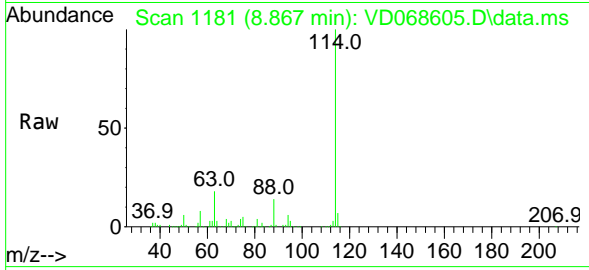
Tgt Ion: 65 Resp: 171764
 Ion Ratio Lower Upper
 65 100
 67 53.5 0.0 105.0





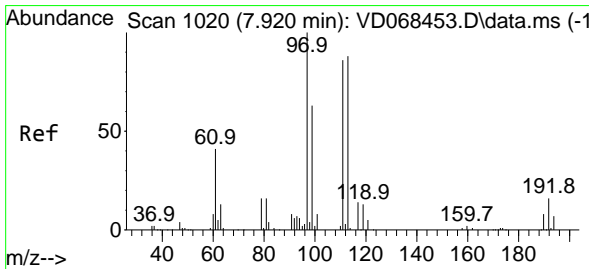
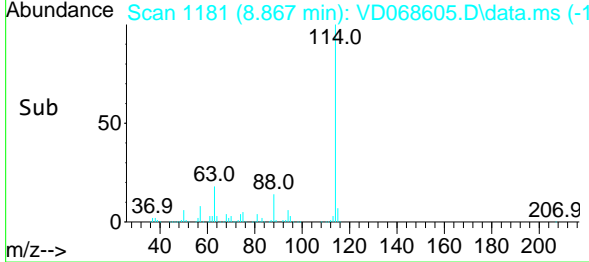
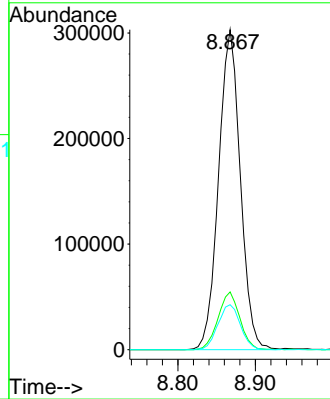
#34
 1,4-Difluorobenzene
 Concen: 50.00 ug/l
 RT: 8.867 min Scan# 1181
 Delta R.T. 0.000 min
 Lab File: VD068605.D
 Acq: 12 Mar 2021 14:37

Instrument :
 MSVOA_D
 ClientSampled :
 SP-1-1



Tgt Ion:114 Resp: 590413

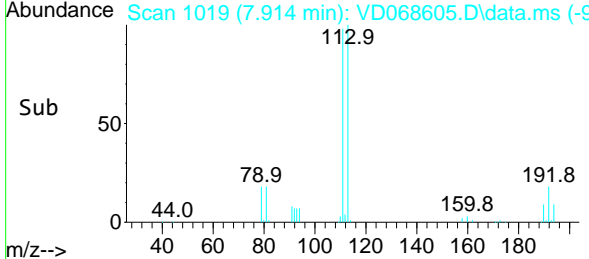
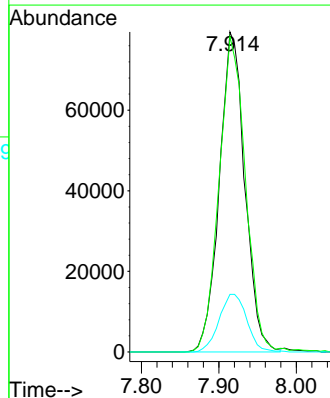
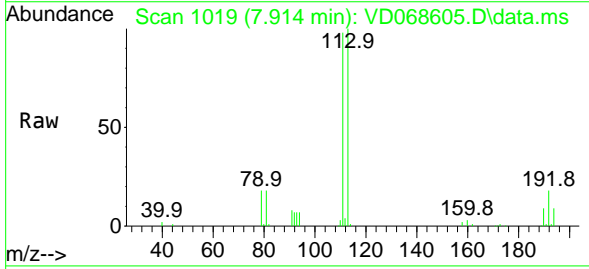
Ion	Ratio	Lower	Upper
114	100		
63	18.1	0.0	34.8
88	14.0	0.0	31.6

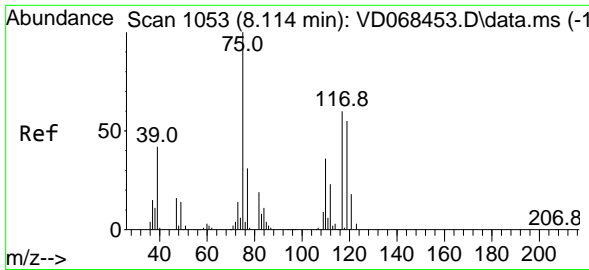


#35
 Dibromofluoromethane
 Concen: 51.01 ug/l
 RT: 7.914 min Scan# 1019
 Delta R.T. -0.005 min
 Lab File: VD068605.D
 Acq: 12 Mar 2021 14:37

Tgt Ion:113 Resp: 181410

Ion	Ratio	Lower	Upper
113	100		
111	102.2	81.4	122.0
192	19.6	16.1	24.1

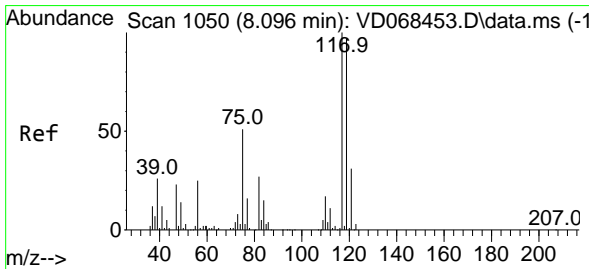
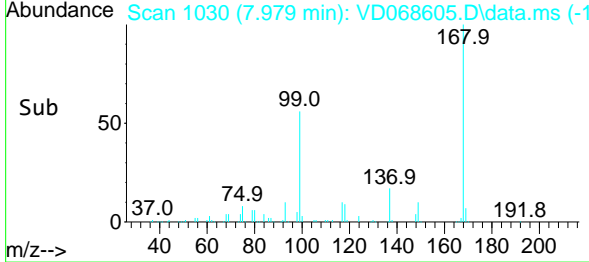
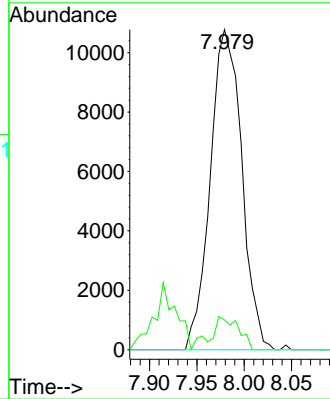
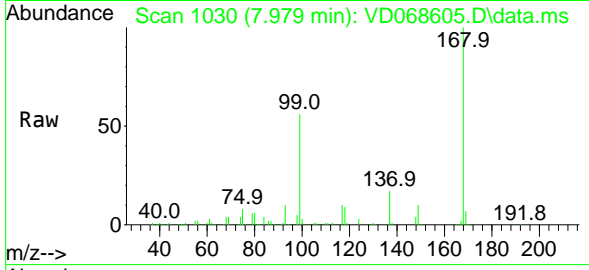




#36
 1,1-Dichloropropene
 Concen: 4.44 ug/l
 RT: 7.979 min Scan# 1030
 Delta R.T. -0.135 min
 Lab File: VD068605.D
 Acq: 12 Mar 2021 14:37

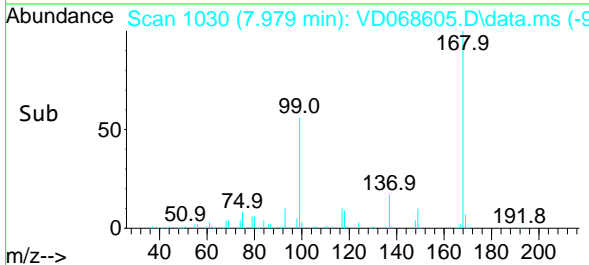
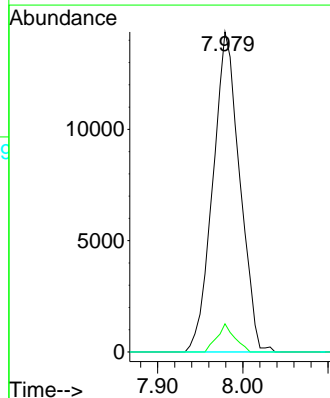
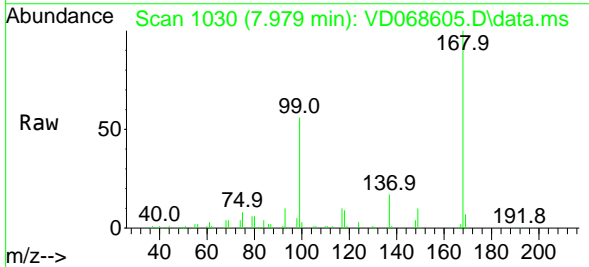
Instrument :
 MSVOA_D
 ClientSampled :
 SP-1-1

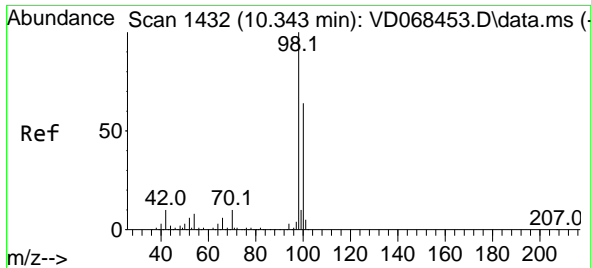
Tgt Ion	Resp	Lower	Upper
75	24903		
75	100		
110	8.6	19.4	58.2#
77	0.0	25.3	37.9#



#38
 Carbon Tetrachloride
 Concen: 5.98 ug/l
 RT: 7.979 min Scan# 1030
 Delta R.T. -0.117 min
 Lab File: VD068605.D
 Acq: 12 Mar 2021 14:37

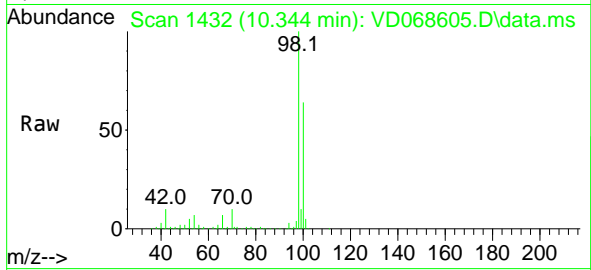
Tgt Ion	Resp	Lower	Upper
117	31529		
117	100		
119	8.8	77.3	115.9#
121	0.0	24.7	37.1#



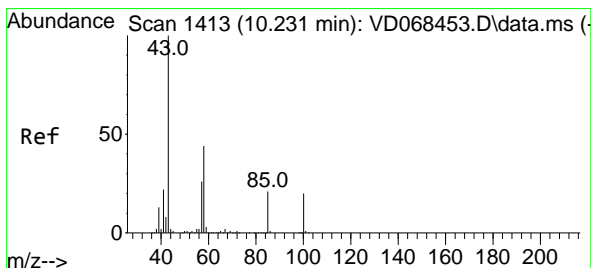
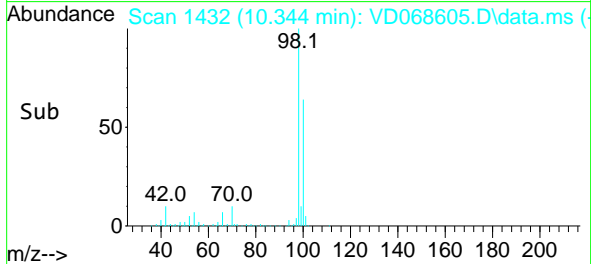
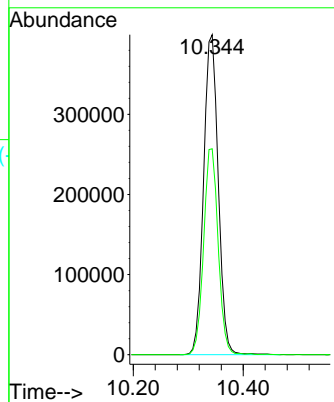


#50
 Toluene-d8
 Concen: 52.14 ug/l
 RT: 10.344 min Scan# 1432
 Delta R.T. 0.000 min
 Lab File: VD068605.D
 Acq: 12 Mar 2021 14:37

Instrument :
 MSVOA_D
 ClientSampled :
 SP-1-1

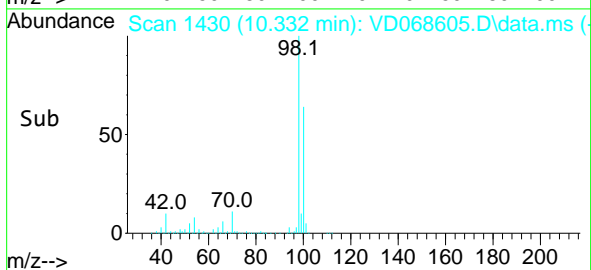
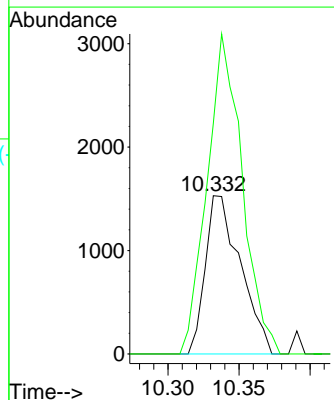
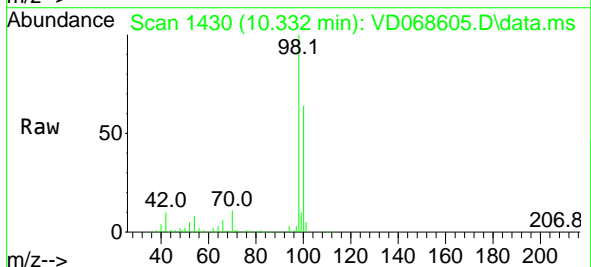


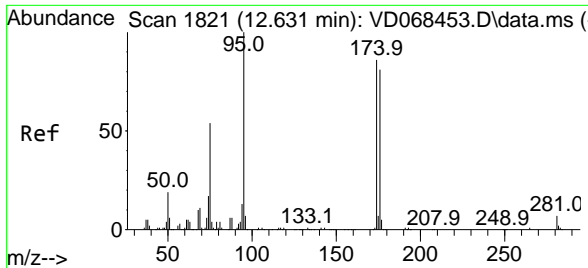
Tgt Ion: 98 Resp: 738666
 Ion Ratio Lower Upper
 98 100
 100 63.8 53.0 79.4



#51
 4-Methyl-2-Pentanone
 Concen: 1.47 ug/l
 RT: 10.332 min Scan# 1430
 Delta R.T. 0.100 min
 Lab File: VD068605.D
 Acq: 12 Mar 2021 14:37

Tgt Ion: 43 Resp: 2627
 Ion Ratio Lower Upper
 43 100
 58 202.4 36.1 54.1#



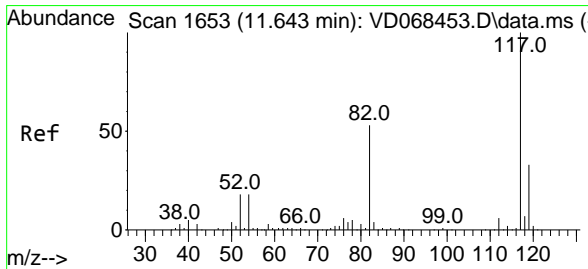
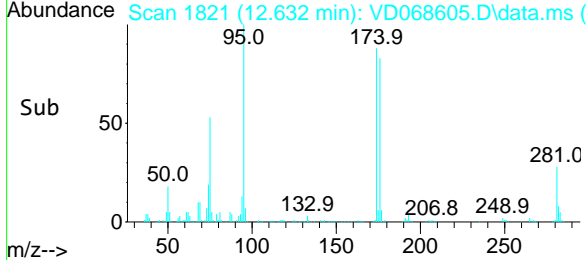
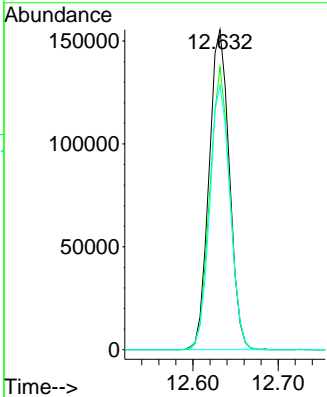
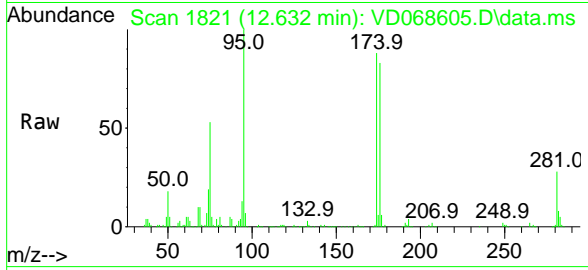


#62
 4-Bromofluorobenzene
 Concen: 56.37 ug/l
 RT: 12.632 min Scan# 1821
 Delta R.T. 0.000 min
 Lab File: VD068605.D
 Acq: 12 Mar 2021 14:37

Instrument :
 MSVOA_D
 ClientSampled :
 SP-1-1

Tgt Ion: 95 Resp: 257375

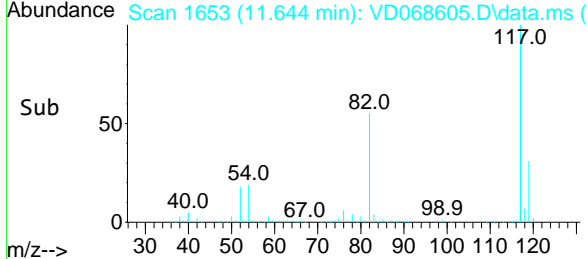
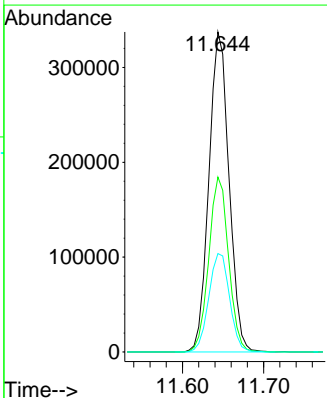
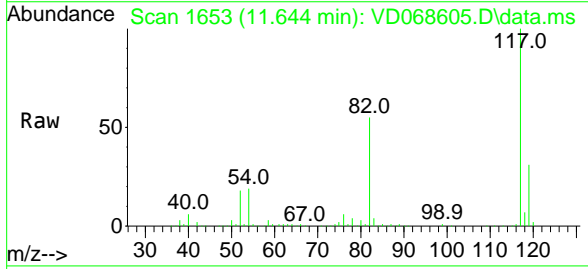
Ion	Ratio	Lower	Upper
95	100		
174	86.6	0.0	172.4
176	83.4	0.0	168.4

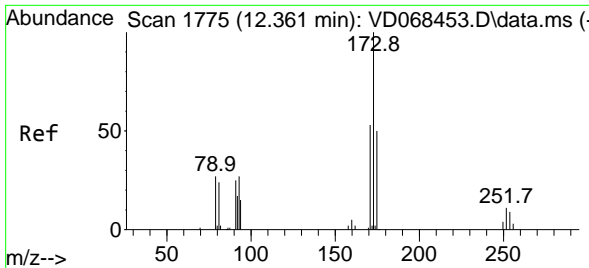


#63
 Chlorobenzene-d5
 Concen: 50.00 ug/l
 RT: 11.644 min Scan# 1653
 Delta R.T. 0.000 min
 Lab File: VD068605.D
 Acq: 12 Mar 2021 14:37

Tgt Ion: 117 Resp: 579323

Ion	Ratio	Lower	Upper
117	100		
82	54.7	41.4	62.0
119	30.8	26.1	39.1

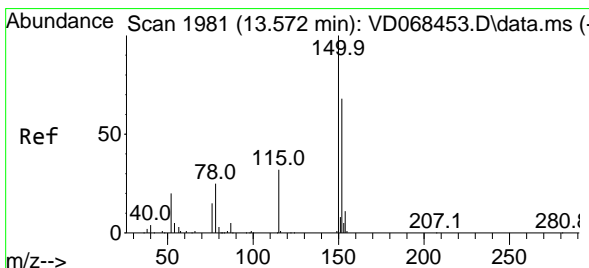
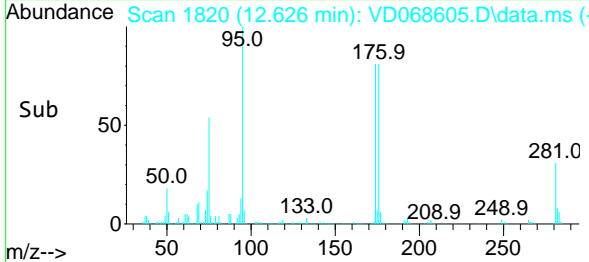
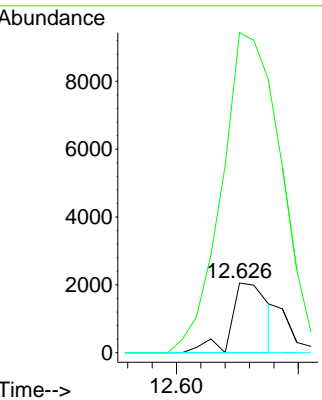
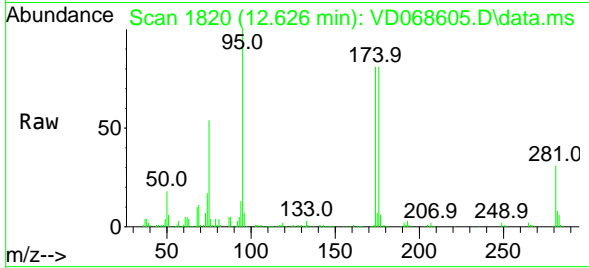




#71
 Bromoform
 Concen: 1.02 ug/l
 RT: 12.626 min Scan# 1820
 Delta R.T. 0.265 min
 Lab File: VD068605.D
 Acq: 12 Mar 2021 14:37

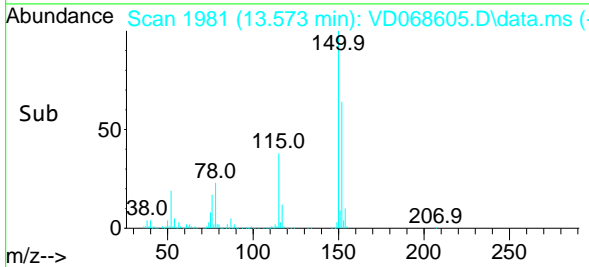
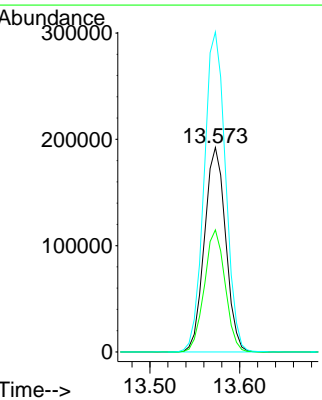
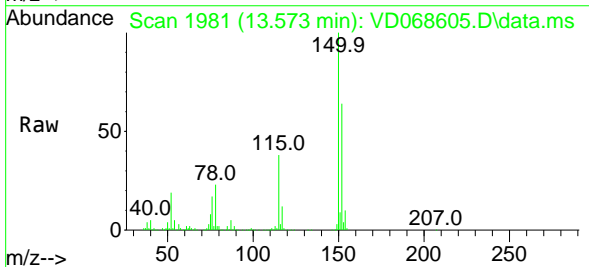
Instrument :
 MSVOA_D
ClientSampled :
 SP-1-1

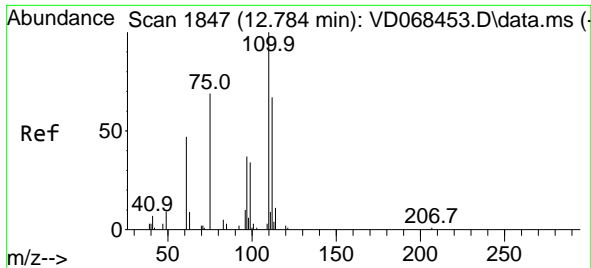
Tgt Ion	Resp	Lower	Upper
173	100		
175	604.8	24.6	73.8#
254	0.0	0.0	0.0



#72
 1,4-Dichlorobenzene-d4
 Concen: 50.00 ug/l
 RT: 13.573 min Scan# 1981
 Delta R.T. 0.001 min
 Lab File: VD068605.D
 Acq: 12 Mar 2021 14:37

Tgt Ion	Resp	Lower	Upper
152	100		
115	58.5	28.9	86.8
150	158.3	0.0	344.4

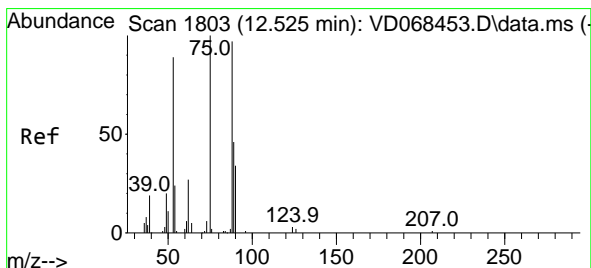
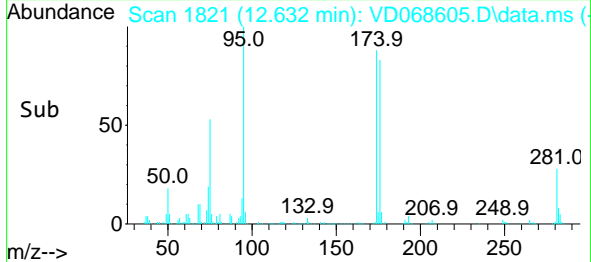
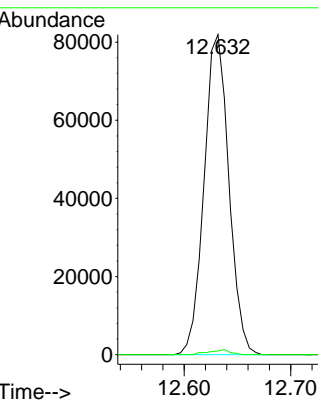
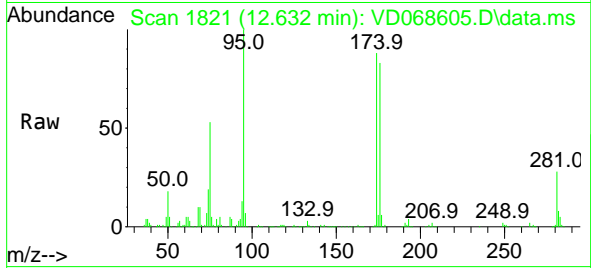




#76
 1,2,3-Trichloropropane
 Concen: 47.22 ug/l
 RT: 12.632 min Scan# 1821
 Delta R.T. -0.152 min
 Lab File: VD068605.D
 Acq: 12 Mar 2021 14:37

Instrument :
 MSVOA_D
 ClientSampled :
 SP-1-1

Tgt Ion: 75 Resp: 132241
 Ion Ratio Lower Upper
 75 100
 77 1.3 0.0 0.0#



#81
 trans-1,4-Dichloro-2-butene
 Concen: 110.20 ug/l
 RT: 12.632 min Scan# 1821
 Delta R.T. 0.106 min
 Lab File: VD068605.D
 Acq: 12 Mar 2021 14:37

Tgt Ion: 75 Resp: 132241
 Ion Ratio Lower Upper
 75 100
 53 0.0 70.2 105.2#
 89 0.3 40.3 60.5#

