

Data Path : Z:\voasrv\HPCHEM1\MSVOA\_D\Data\VD031224\  
 Data File : VD078637.D  
 Acq On : 12 Mar 2024 15:21  
 Operator : RP/MD  
 Sample : P1733-03  
 Misc : 5.70G/5ml/MSVOA\_D/SOIL/A  
 ALS Vial : 6 Sample Multiplier: 1

**Instrument :**  
 MSVOA\_D  
**ClientSampleId :**  
 WC-1-VOC

Quant Time: Mar 13 03:04:54 2024  
 Quant Method : Z:\voasrv\HPCHEM1\MSVOA\_D\Method\82D030124S.M  
 Quant Title : SW846 8260  
 QLast Update : Sat Mar 02 03:50:17 2024  
 Response via : Initial Calibration

Compound	R.T.	QIon	Response	Conc	Units	Dev(Min)
-----						
Internal Standards						
1) Pentafluorobenzene	7.875	168	89854	50.000	ug/l	0.00
34) 1,4-Difluorobenzene	8.775	114	197288	50.000	ug/l	0.00
63) Chlorobenzene-d5	11.581	117	256652	50.000	ug/l	0.00
72) 1,4-Dichlorobenzene-d4	13.522	152	133993	50.000	ug/l	0.00

System Monitoring Compounds						
33) 1,2-Dichloroethane-d4	8.228	65	42933	48.201	ug/l	0.00
Spiked Amount	50.000	Range	50 - 163	Recovery	=	96.400%
35) Dibromofluoromethane	7.810	113	64870	50.548	ug/l	0.00
Spiked Amount	50.000	Range	54 - 147	Recovery	=	101.100%
50) Toluene-d8	10.269	98	265339	53.208	ug/l	0.00
Spiked Amount	50.000	Range	58 - 134	Recovery	=	106.420%
62) 4-Bromofluorobenzene	12.575	95	106637	74.868	ug/l	0.00
Spiked Amount	50.000	Range	30 - 143	Recovery	=	149.740%#

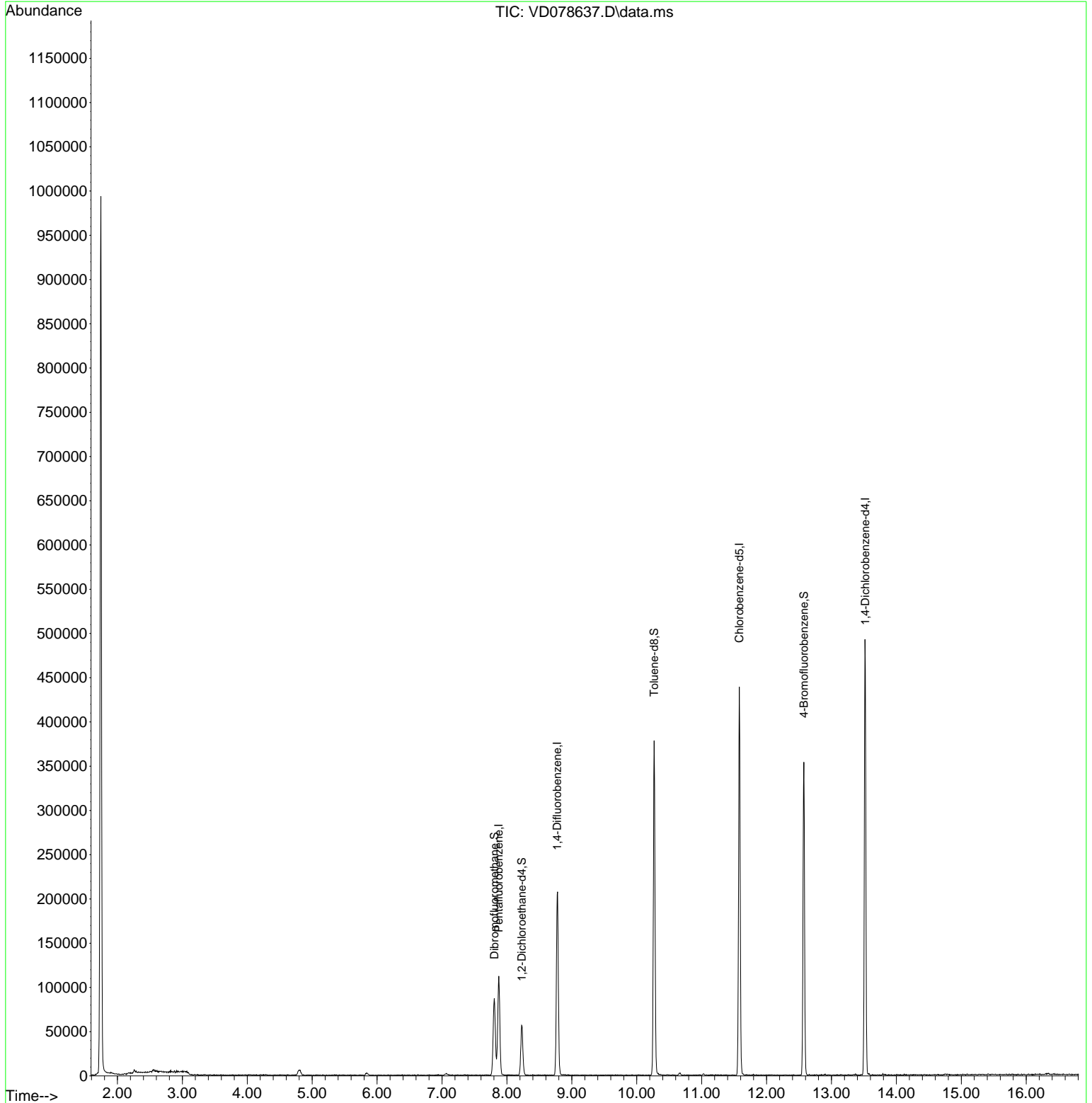
Target Compounds Qvalue  
 -----

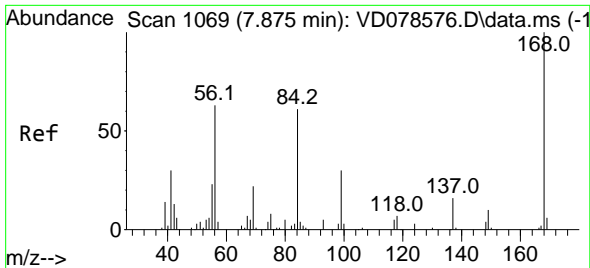
(#) = qualifier out of range (m) = manual integration (+) = signals summed

Data Path : Z:\voasrv\HPCHEM1\MSVOA\_D\Data\VD031224\  
 Data File : VD078637.D  
 Acq On : 12 Mar 2024 15:21  
 Operator : RP/MD  
 Sample : P1733-03  
 Misc : 5.70G/5ml/MSVOA\_D/SOIL/A  
 ALS Vial : 6 Sample Multiplier: 1

**Instrument :**  
 MSVOA\_D  
**ClientSampleId :**  
 WC-1-VOC

Quant Time: Mar 13 03:04:54 2024  
 Quant Method : Z:\voasrv\HPCHEM1\MSVOA\_D\Method\82D030124S.M  
 Quant Title : SW846 8260  
 QLast Update : Sat Mar 02 03:50:17 2024  
 Response via : Initial Calibration

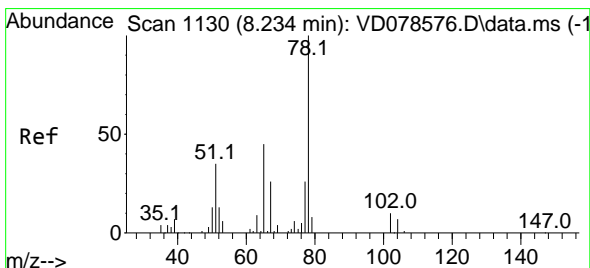
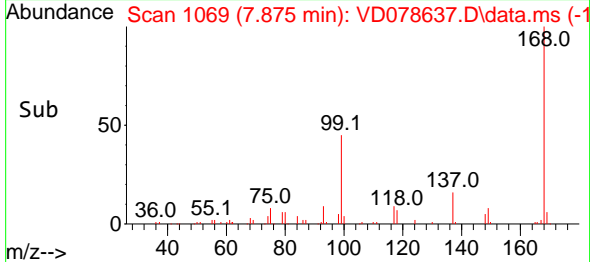
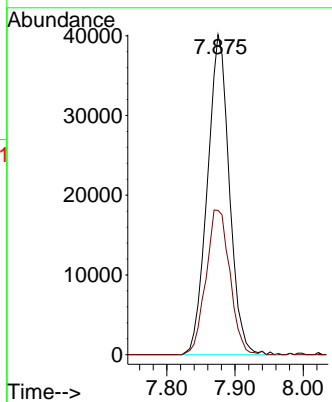
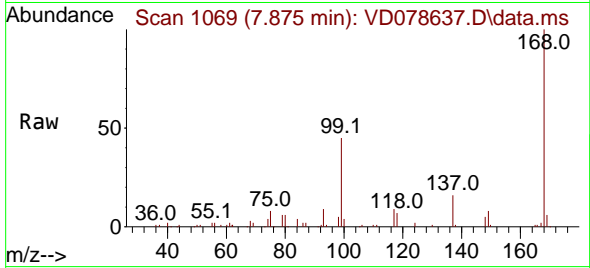




#1  
 Pentafluorobenzene  
 Concen: 50.000 ug/l  
 RT: 7.875 min Scan# 1069  
 Delta R.T. -0.000 min  
 Lab File: VD078637.D  
 Acq: 12 Mar 2024 15:21

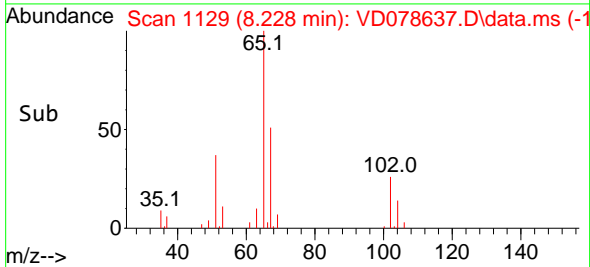
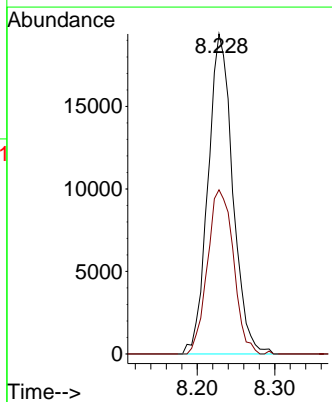
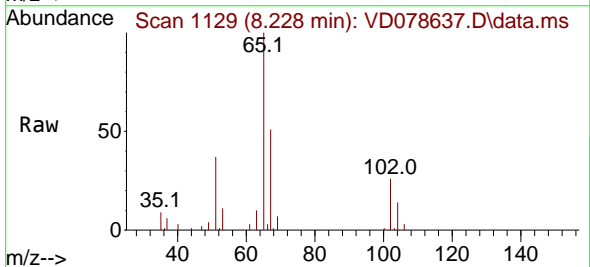
Instrument :  
 MSVOA\_D  
 ClientSampleId :  
 WC-1-VOC

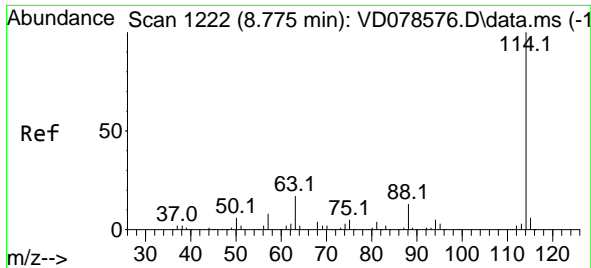
Tgt Ion:168 Resp: 89854  
 Ion Ratio Lower Upper  
 168 100  
 99 45.1 36.7 55.1



#33  
 1,2-Dichloroethane-d4  
 Concen: 48.201 ug/l  
 RT: 8.228 min Scan# 1129  
 Delta R.T. -0.006 min  
 Lab File: VD078637.D  
 Acq: 12 Mar 2024 15:21

Tgt Ion: 65 Resp: 42933  
 Ion Ratio Lower Upper  
 65 100  
 67 53.9 0.0 115.0

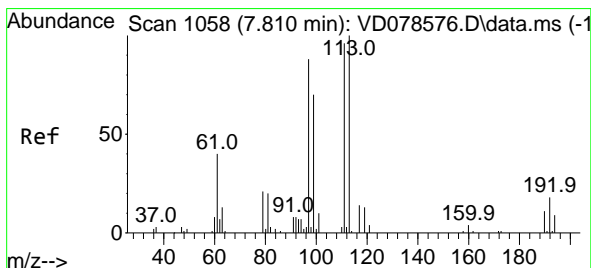
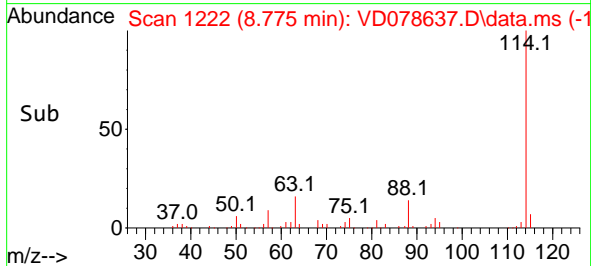
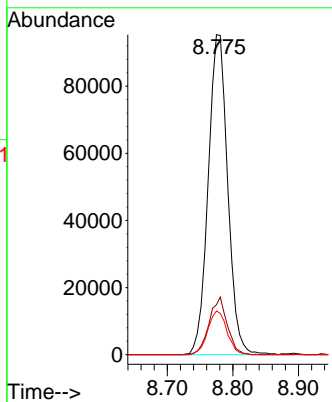
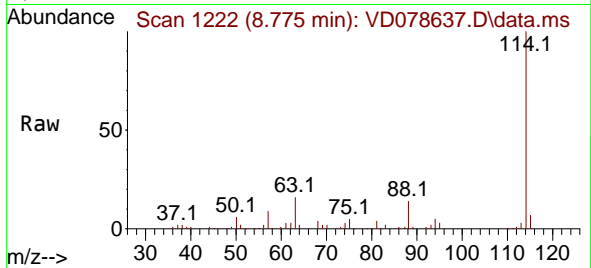




#34  
 1,4-Difluorobenzene  
 Concen: 50.000 ug/l  
 RT: 8.775 min Scan# 11  
 Delta R.T. 0.000 min  
 Lab File: VD078637.D  
 Acq: 12 Mar 2024 15:21

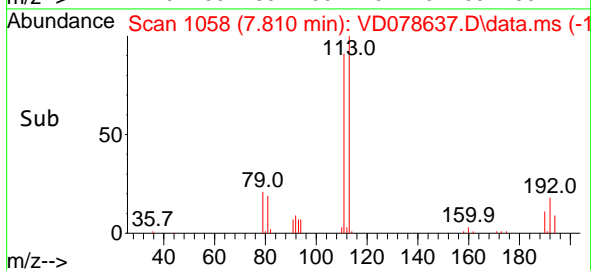
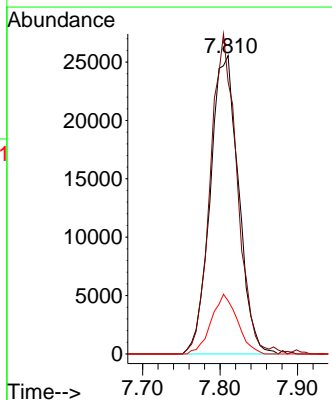
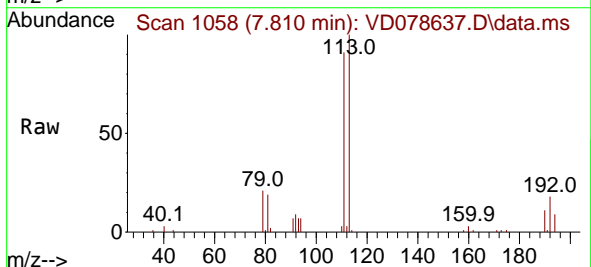
Instrument :  
 MSVOA\_D  
 ClientSampleId :  
 WC-1-VOC

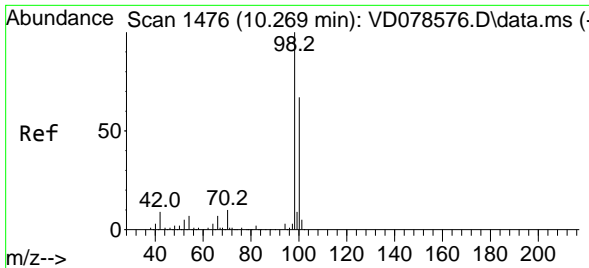
Tgt Ion	Resp	Lower	Upper
114	100		
63	15.6	0.0	33.4
88	13.6	0.0	26.2



#35  
 Dibromofluoromethane  
 Concen: 50.548 ug/l  
 RT: 7.810 min Scan# 1058  
 Delta R.T. 0.000 min  
 Lab File: VD078637.D  
 Acq: 12 Mar 2024 15:21

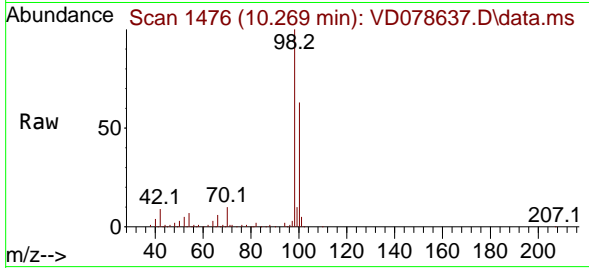
Tgt Ion	Resp	Lower	Upper
113	100		
111	101.8	84.7	127.1
192	18.5	16.8	25.2



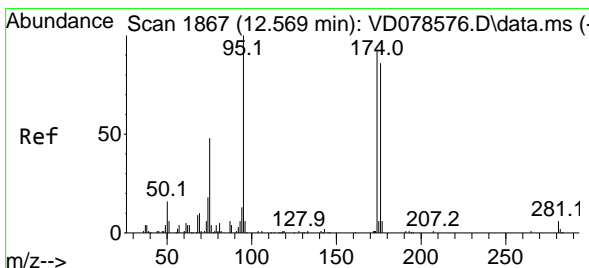
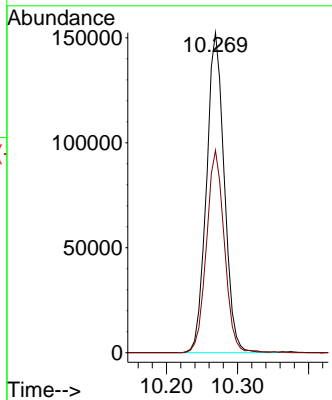
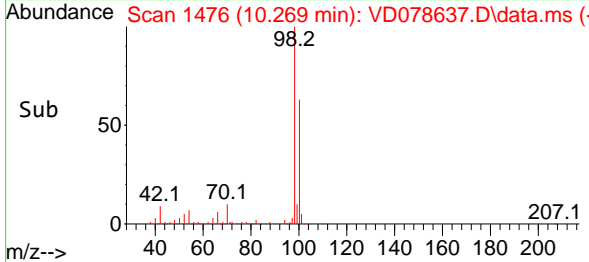


#50  
 Toluene-d8  
 Concen: 53.208 ug/l  
 RT: 10.269 min Scan# 1476  
 Delta R.T. 0.000 min  
 Lab File: VD078637.D  
 Acq: 12 Mar 2024 15:21

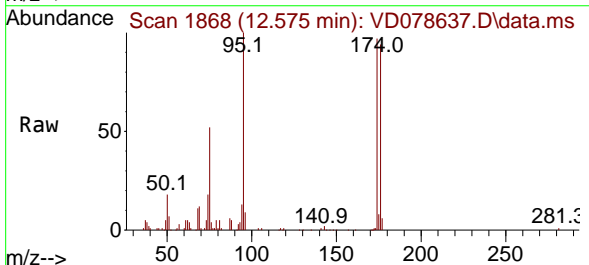
Instrument : MSVOA\_D  
 ClientSampleId : WC-1-VOC



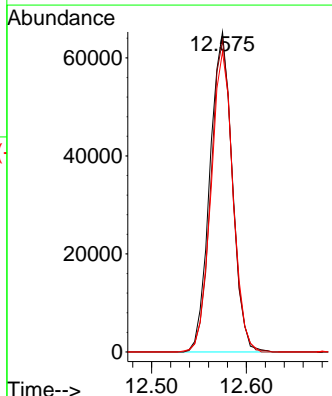
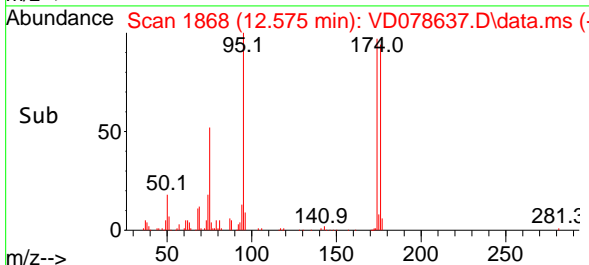
Tgt Ion: 98 Resp: 265339  
 Ion Ratio Lower Upper  
 98 100  
 100 63.5 50.3 75.5

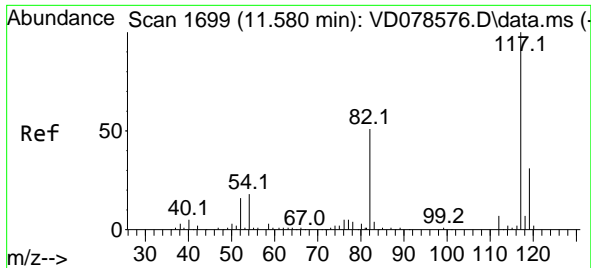


#62  
 4-Bromofluorobenzene  
 Concen: 74.868 ug/l  
 RT: 12.575 min Scan# 1868  
 Delta R.T. 0.006 min  
 Lab File: VD078637.D  
 Acq: 12 Mar 2024 15:21



Tgt Ion: 95 Resp: 106637  
 Ion Ratio Lower Upper  
 95 100  
 174 94.3 0.0 201.8  
 176 92.5 0.0 191.8



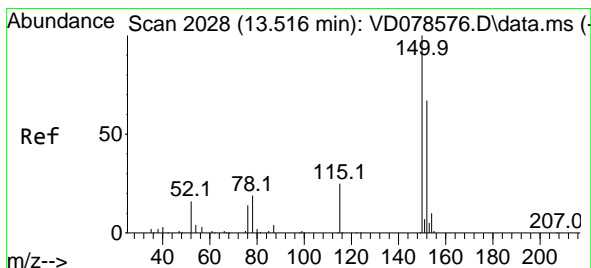
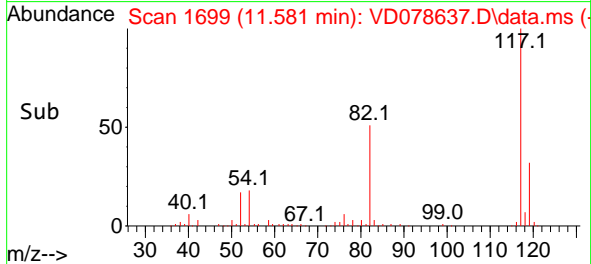
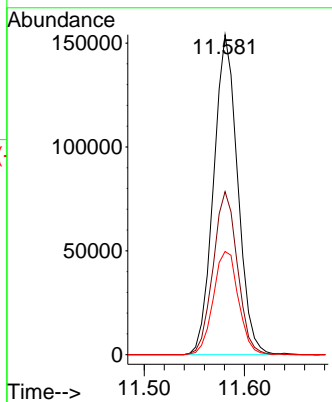
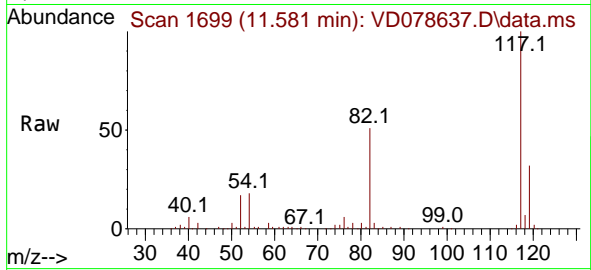


#63  
 Chlorobenzene-d5  
 Concen: 50.000 ug/l  
 RT: 11.581 min Scan# 1699  
 Delta R.T. 0.000 min  
 Lab File: VD078637.D  
 Acq: 12 Mar 2024 15:21

Instrument :  
 MSVOA\_D  
 ClientSampleId :  
 WC-1-VOC

Tgt Ion:117 Resp: 256652

Ion	Ratio	Lower	Upper
117	100		
82	51.0	38.3	57.5
119	32.2	25.0	37.4



#72  
 1,4-Dichlorobenzene-d4  
 Concen: 50.000 ug/l  
 RT: 13.522 min Scan# 2029  
 Delta R.T. 0.006 min  
 Lab File: VD078637.D  
 Acq: 12 Mar 2024 15:21

Tgt Ion:152 Resp: 133993

Ion	Ratio	Lower	Upper
152	100		
115	56.4	27.1	81.3
150	161.0	0.0	353.6

