

Data Path : Z:\VOASRV\HPCHEM1\MSVOA D\DATA\VD031319\
 Data File : VD061045.D
 Acq On : 13 Mar 2019 16:36
 Operator : VA/AP
 Sample : K1847-03
 Misc : 6.62g/5ml/MSVOA D/SOIL
 ALS Vial : 12 Sample Multiplier: 1

Integration Parameters: RTEINT.P

Integrator: RTE
 Smoothing : ON Filtering: 5
 Sampling : 1 Min Area: 3 % of largest Peak
 Start Thrs: 0.2 Max Peaks: 100
 Stop Thrs : 0 Peak Location: TOP

If leading or trailing edge < 100 prefer < Baseline drop else tangent >
 Peak separation: 5

Method : Z:\VOASRV\HPCHEM1\MSVOA_D\METHOD\82D030719S.M
 Title : SW846 8260

Signal : TIC

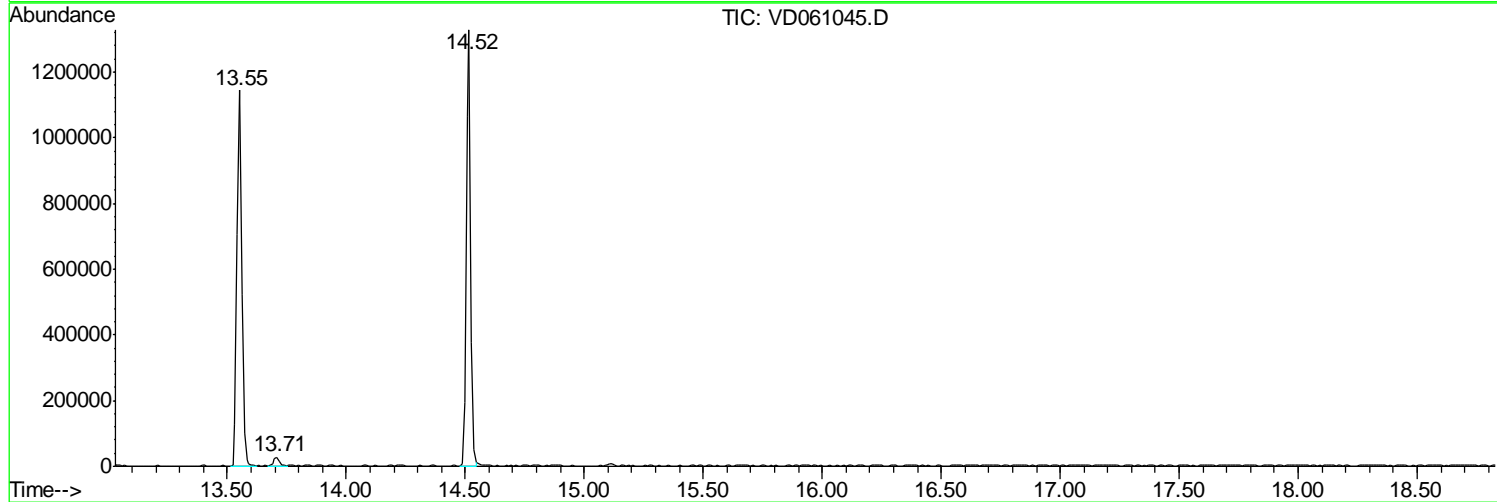
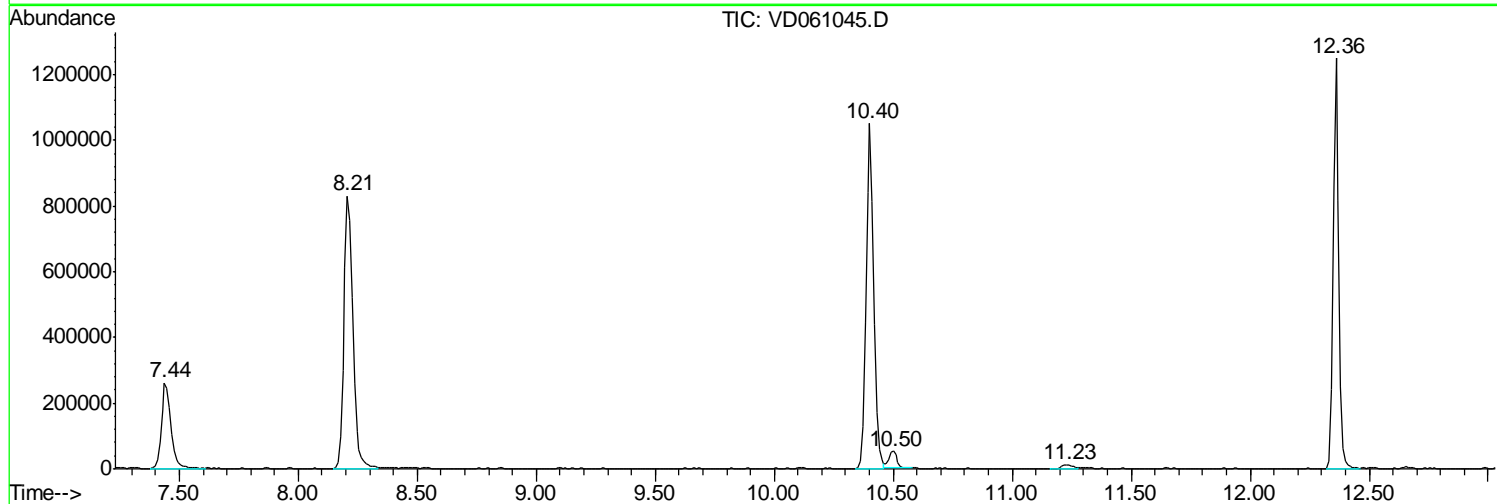
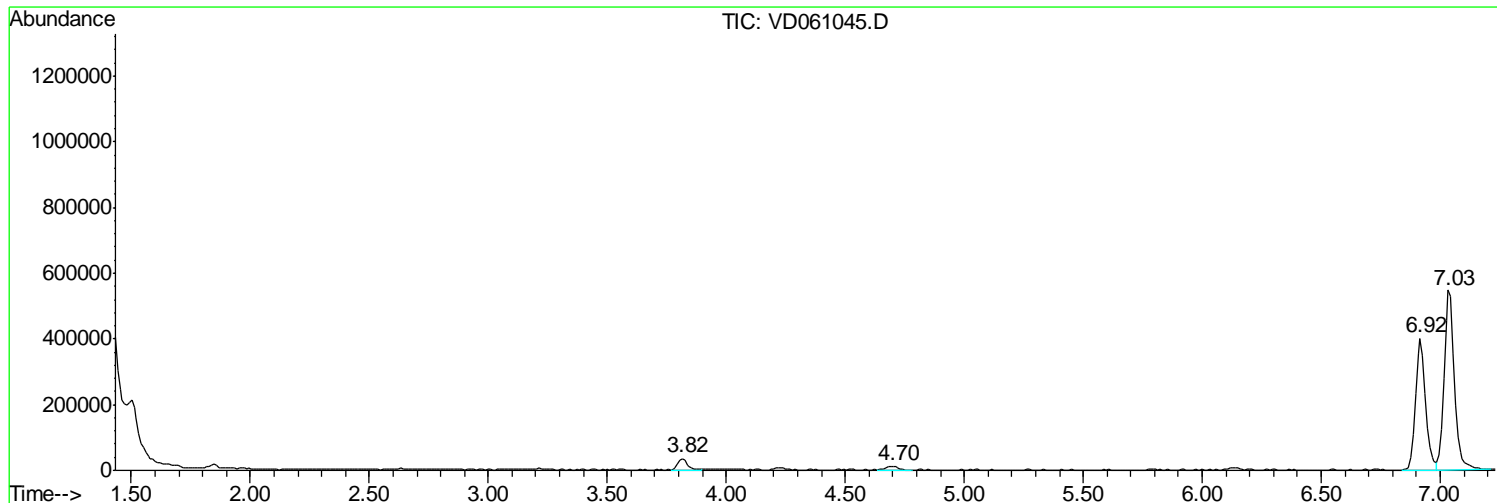
peak #	R.T. min	first scan	max scan	last scan	PK TY	peak height	corr. area	corr. % max.	% of total
1	3.816	238	243	251	rBV	33628	96159	4.07%	0.696%
2	4.702	326	333	341	rVB3	10048	32380	1.37%	0.234%
3	6.917	550	558	565	rBV	399960	1180200	49.99%	8.543%
4	7.035	565	570	588	rVB	545221	1645941	69.72%	11.914%
5	7.438	605	611	628	rVB	259233	713682	30.23%	5.166%
6	8.206	683	689	702	rBV	829632	2156423	91.35%	15.609%
7	10.401	906	912	918	rBV	1049224	2360688	100.00%	17.087%
8	10.500	918	922	930	rVB	51743	127898	5.42%	0.926%
9	11.228	989	996	1001	rBV2	12360	36090	1.53%	0.261%
10	12.361	1107	1111	1121	rBV	1246522	2086686	88.39%	15.104%
11	13.552	1228	1232	1239	rBV	1142646	1551551	65.72%	11.230%
12	13.709	1244	1248	1252	rVB	25721	42109	1.78%	0.305%
13	14.516	1326	1330	1333	rBV	1326139	1785714	75.64%	12.925%

Sum of corrected areas: 13815521

Data Path : Z:\VOASRV\HPCHEM1\MSVOA D\DATA\VD031319\
 Data File : VD061045.D
 Acq On : 13 Mar 2019 16:36
 Operator : VA/AP
 Sample : K1847-03
 Misc : 6.62µ/5ml/MSVOA D/SOIL
 ALS Vial : 12 Sample Multiplier: 1

Quant Method : Z:\VOASRV\HPCHEM1\MSVOA_D\METHOD\82D030719S.M
 Quant Title : SW846 8260

TIC Library : C:\DATABASE\NIST11.L
 TIC Integration Parameters: LSCINT.P



Data Path : Z:\VOASRV\HPCHEM1\MSVOA_D\DATA\VD031319\
Data File : VD061045.D
Acq On : 13 Mar 2019 16:36
Operator : VA/AP
Sample : K1847-03
Misc : 6.62g/5ml/MSVOA_D/SOIL
ALS Vial : 12 Sample Multiplier: 1

Quant Method : Z:\VOASRV\HPCHEM1\MSVOA_D\METHOD\82D030719S.M
Quant Title : SW846 8260

TIC Library : C:\DATABASE\NIST11.L
TIC Integration Parameters: LSCINT.P

No Library Search Compounds Detected

Data Path : Z:\VOASRV\HPCHEM1\MSVOA_D\DATA\VD031319\
Data File : VD061045.D
Acq On : 13 Mar 2019 16:36
Operator : VA/AP
Sample : K1847-03
Misc : 6.62g/5ml/MSVOA_D/SOIL
ALS Vial : 12 Sample Multiplier: 1

Quant Method : Z:\VOASRV\HPCHEM1\MSVOA_D\METHOD\82D030719S.M
Quant Title : SW846 8260

TIC Library : C:\DATABASE\NIST11.L
TIC Integration Parameters: LSCINT.P

TIC Top Hit name	RT	EstConc	Units	Response	--Internal Standard--			
					#	RT	Resp	Conc
