

Data Path : Z:\VOASRV\HPCHEM1\MSVOA D\DATA\VD031419\
 Data File : VD061076.D
 Acq On : 14 Mar 2019 20:31
 Operator : VA/AP
 Sample : K1908-03
 Misc : 5.84g/5ml/MSVOA D/SOIL
 ALS Vial : 21 Sample Multiplier: 1

Instrument :
 MSVOA_D
 ClientSampled :
 101-102

Integration Parameters: RTEINT.P

Integrator: RTE
 Smoothing : ON Filtering: 5
 Sampling : 1 Min Area: 3 % of largest Peak
 Start Thrs: 0.2 Max Peaks: 100
 Stop Thrs : 0 Peak Location: TOP

If leading or trailing edge < 100 prefer < Baseline drop else tangent >
 Peak separation: 5

Method : Z:\VOASRV\HPCHEM1\MSVOA_D\METHOD\82D030719S.M
 Title : SW846 8260

Signal : TIC

peak #	R.T. min	first scan	max scan	last scan	PK TY	peak height	corr. area	corr. % max.	% of total
1	3.228	179	183	191	rBV	25871	71204	3.00%	0.518%
2	3.838	238	245	256	rBV	63736	197627	8.33%	1.437%
3	4.714	329	334	340	rBV3	9018	27450	1.16%	0.200%
4	6.939	553	560	566	rBV	441798	1243632	52.45%	9.041%
5	7.057	566	572	593	rVB	478536	1477979	62.33%	10.745%
6	7.461	607	613	629	rVB	283025	784181	33.07%	5.701%
7	8.229	685	691	705	rBV	683996	1896182	79.97%	13.785%
8	10.414	907	913	921	rBV	1021445	2371224	100.00%	17.238%
9	10.512	921	923	933	rVB	30778	70617	2.98%	0.513%
10	11.241	992	997	1003	rBV	11568	35893	1.51%	0.261%
11	12.373	1108	1112	1121	rBV	1108260	1888253	79.63%	13.727%
12	12.668	1138	1142	1147	rVB	32937	59029	2.49%	0.429%
13	13.052	1178	1181	1185	rBV	33583	49346	2.08%	0.359%
14	13.564	1229	1233	1239	rBV	942708	1441808	60.80%	10.482%
15	13.712	1245	1248	1252	rVB	17191	27040	1.14%	0.197%
16	13.938	1268	1271	1277	rVB	30052	46337	1.95%	0.337%
17	14.243	1299	1302	1305	rVB	61980	75931	3.20%	0.552%
18	14.519	1327	1330	1333	rBV	1230817	1515738	63.92%	11.019%
19	14.559	1333	1334	1338	rVB	29107	31643	1.33%	0.230%
20	14.706	1344	1349	1354	rVB	36255	51771	2.18%	0.376%
21	14.883	1364	1367	1370	rBV	173195	236260	9.96%	1.718%
22	16.124	1490	1493	1496	rBV	135992	156408	6.60%	1.137%

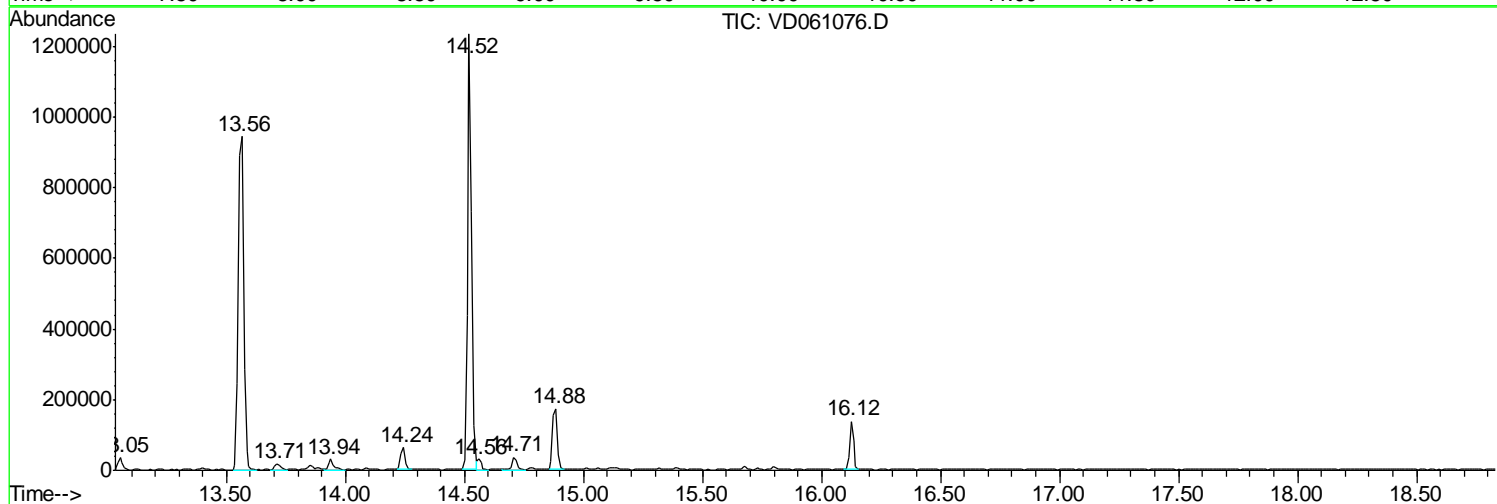
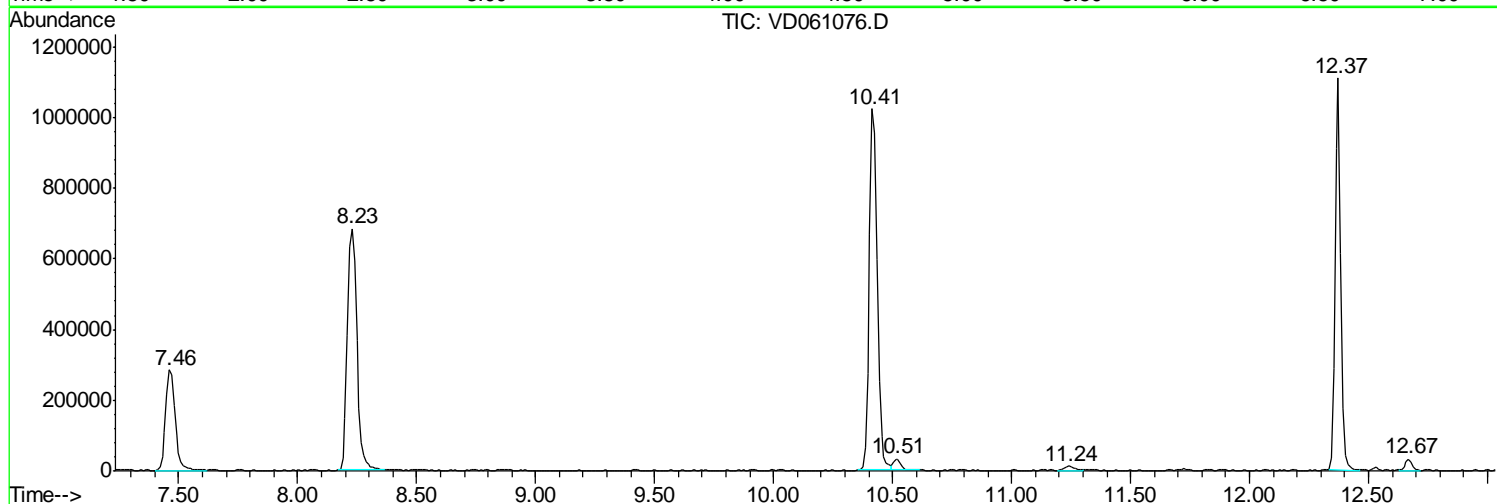
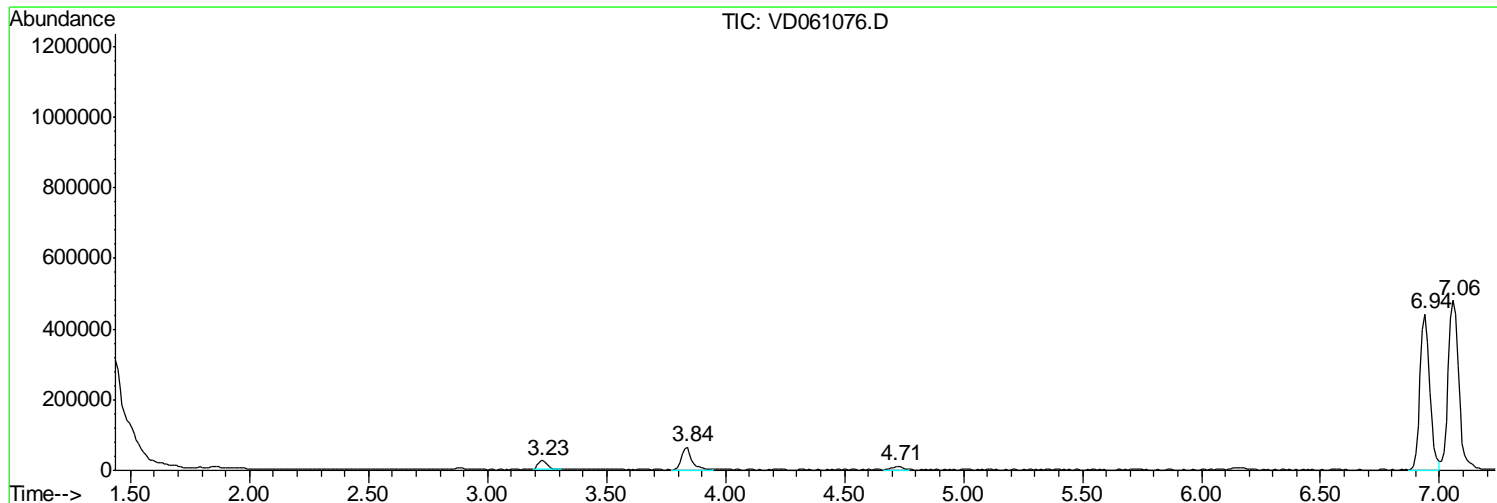
Sum of corrected areas: 13755553

Data Path : Z:\VOASRV\HPCHEM1\MSVOA D\DATA\VD031419\
 Data File : VD061076.D
 Acq On : 14 Mar 2019 20:31
 Operator : VA/AP
 Sample : K1908-03
 Misc : 5.84g/5ml/MSVOA D/SOIL
 ALS Vial : 21 Sample Multiplier: 1

Instrument :
 MSVOA_D
 ClientSampled :
 101-102

Quant Method : Z:\VOASRV\HPCHEM1\MSVOA_D\METHOD\82D030719S.M
 Quant Title : SW846 8260

TIC Library : C:\DATABASE\NIST11.L
 TIC Integration Parameters: LSCINT.P



Data Path : Z:\VOASRV\HPCHEM1\MSVOA D\DATA\VD031419\
 Data File : VD061076.D
 Acq On : 14 Mar 2019 20:31
 Operator : VA/AP
 Sample : K1908-03
 Misc : 5.84g/5ml/MSVOA D/SOIL
 ALS Vial : 21 Sample Multiplier: 1

Instrument :
 MSVOA_D
 ClientSampleID :
 101-102

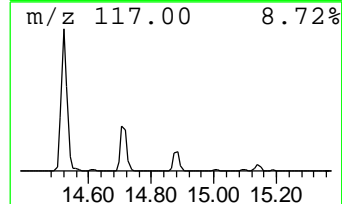
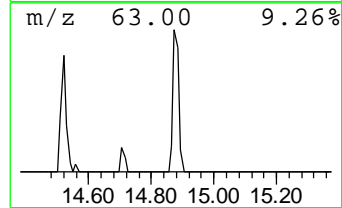
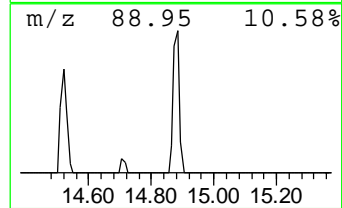
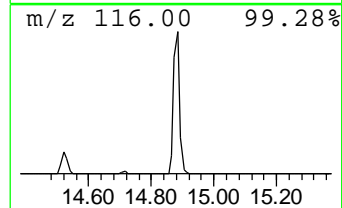
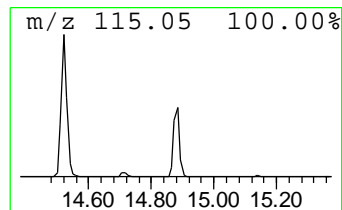
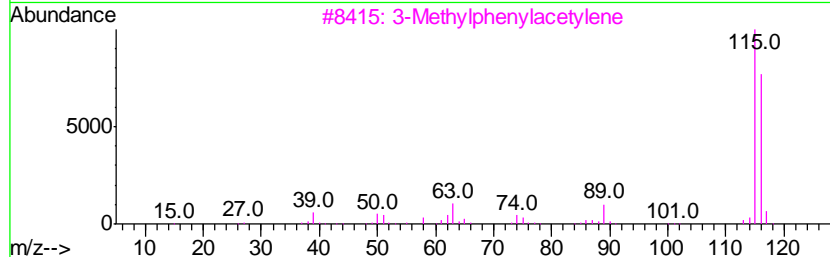
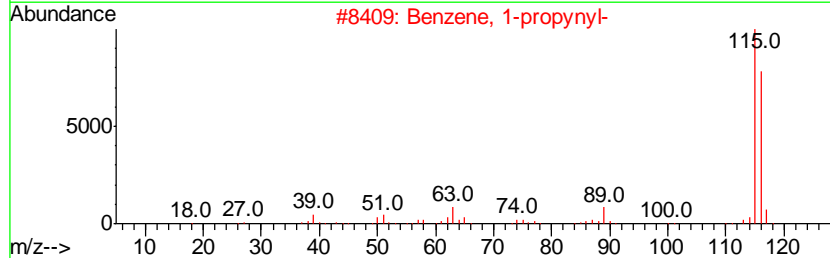
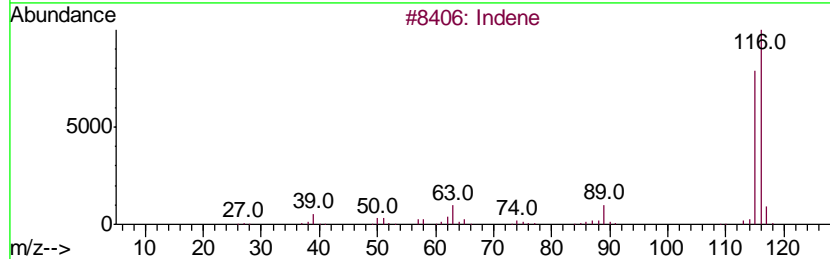
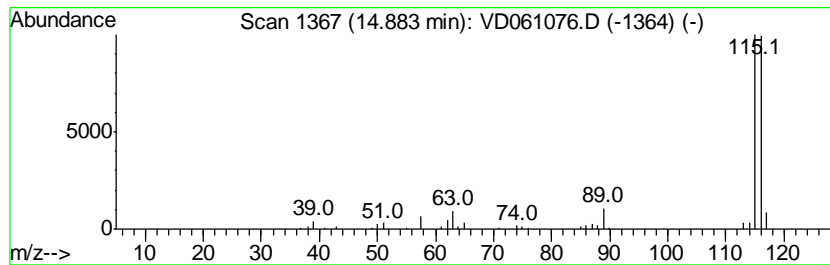
Quant Method : Z:\VOASRV\HPCHEM1\MSVOA_D\METHOD\82D030719S.M
 Quant Title : SW846 8260

TIC Library : C:\DATABASE\NIST11.L
 TIC Integration Parameters: LSCINT.P

 Peak Number 1 Indene Concentration Rank 1

R.T.	EstConc	Area	Relative to ISTD	R.T.
14.88	7.79 ug/l	236260	1,4-Dichlorobenzene-d4	14.52

Hit#	of	Tentative ID	MW	MolForm	CAS#	Qual
1	5	Indene	116	C9H8	000095-13-6	94
2		Benzene, 1-propynyl-	116	C9H8	000673-32-5	91
3		3-Methylphenylacetylene	116	C9H8	000766-82-5	91
4		Benzene, 1-ethynyl-4-methyl-	116	C9H8	000766-97-2	91
5		2-Methylphenylacetylene	116	C9H8	000766-47-2	90



Data Path : Z:\VOASRV\HPCHEM1\MSVOA_D\DATA\VD031419\
Data File : VD061076.D
Acq On : 14 Mar 2019 20:31
Operator : VA/AP
Sample : K1908-03
Misc : 5.84g/5ml/MSVOA_D/SOIL
ALS Vial : 21 Sample Multiplier: 1

Instrument :
MSVOA_D
ClientSampleId :
101-102

Quant Method : Z:\VOASRV\HPCHEM1\MSVOA_D\METHOD\82D030719S.M
Quant Title : SW846 8260

TIC Library : C:\DATABASE\NIST11.L
TIC Integration Parameters: LSCINT.P

TIC Top Hit name	RT	EstConc	Units	Response	--Internal Standard--			
					#	RT	Resp	Conc
Indene	14.88	7.8	ug/l	236260	4	14.52	1515740	50.0