

Data Path : Z:\voasrv\HPCHEM1\MSVOA\_D\Data\VD031522\  
 Data File : VD072187.D  
 Acq On : 15 Mar 2022 14:25  
 Operator : VA/SY  
 Sample : N1851-05  
 Misc : 5.05G/5.00ml/MSVOA\_D/SOIL  
 ALS Vial : 10 Sample Multiplier: 1

Instrument :  
 MSVOA\_D  
 ClientSampleId :  
 DUM-36

Quant Time: Mar 15 17:45:57 2022  
 Quant Method : Z:\voasrv\HPCHEM1\MSVOA\_D\Method\82D031122S.M  
 Quant Title : SW846 8260  
 QLast Update : Mon Mar 14 05:18:06 2022  
 Response via : Initial Calibration

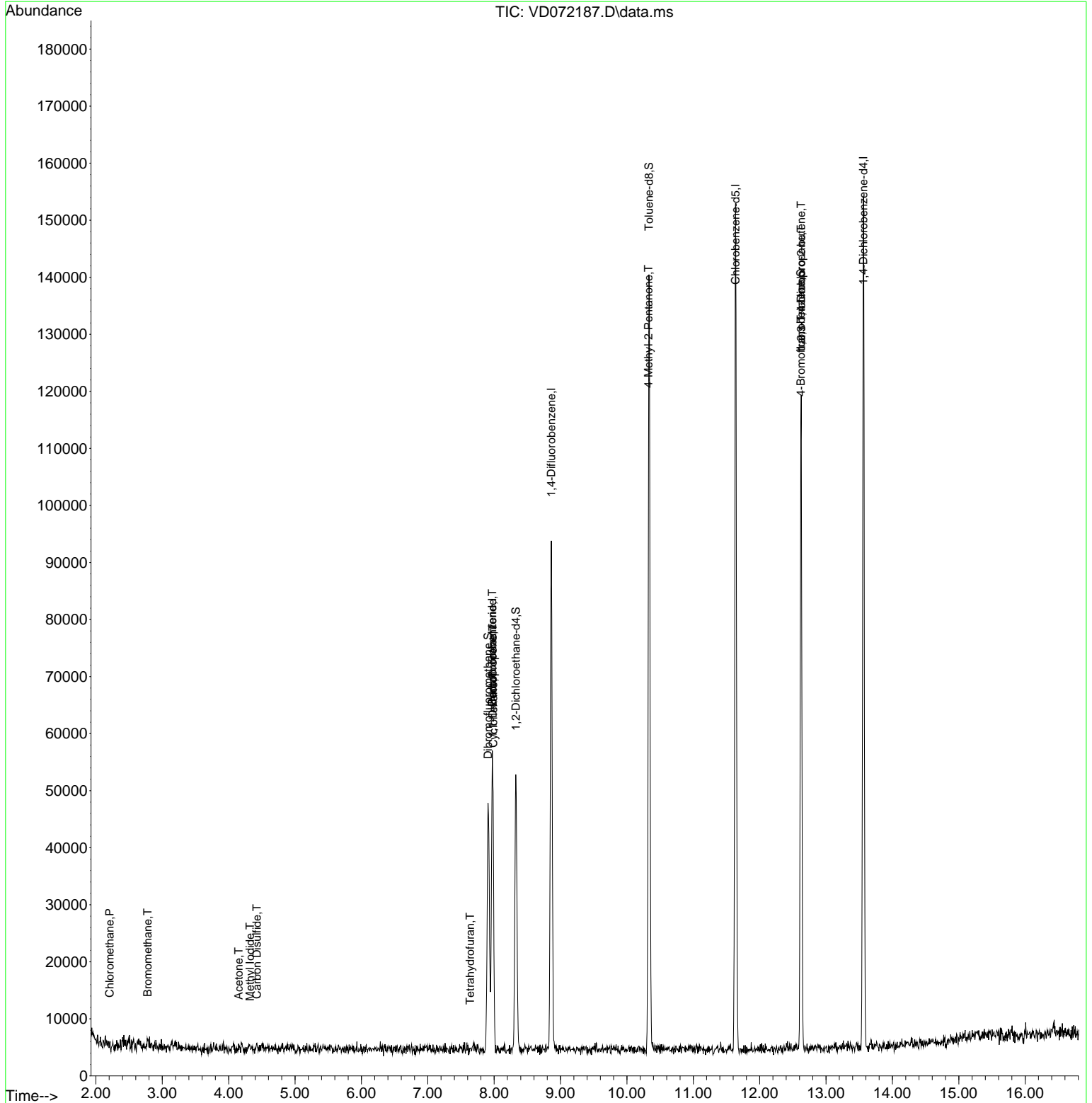
Compound	R.T.	QIon	Response	Conc	Units	Dev(Min)
-----						
Internal Standards						
1) Pentafluorobenzene	7.973	168	36723	50.000	ug/l	0.00
34) 1,4-Difluorobenzene	8.861	114	72669	50.000	ug/l	0.00
63) Chlorobenzene-d5	11.638	117	85166	50.000	ug/l	0.00
72) 1,4-Dichlorobenzene-d4	13.561	152	40560	50.000	ug/l	0.00
System Monitoring Compounds						
33) 1,2-Dichloroethane-d4	8.326	65	38910	95.075	ug/l	0.00
Spiked Amount	50.000	Range	50 - 163	Recovery	=	190.140%#
35) Dibromofluoromethane	7.908	113	31244	61.098	ug/l	0.00
Spiked Amount	50.000	Range	54 - 147	Recovery	=	122.200%
50) Toluene-d8	10.332	98	91557	48.965	ug/l	0.00
Spiked Amount	50.000	Range	49 - 140	Recovery	=	97.920%
62) 4-Bromofluorobenzene	12.620	95	39093	53.807	ug/l	0.00
Spiked Amount	50.000	Range	25 - 144	Recovery	=	107.620%
Target Compounds						
						Qvalue
3) Chloromethane	2.209	50	440	1.458	ug/l	98
5) Bromomethane	2.779	94	857	4.517	ug/l	88
10) Methyl Iodide	4.320	142	753	4.141	ug/l #	38
16) Acetone	4.150	43	266	2.994	ug/l #	80
17) Carbon Disulfide	4.426	76	180	1.722	ug/l #	74
20) Methylene Chloride	4.967	84	208	Below Cal	#	29
29) Tetrahydrofuran	7.638	42	70	1.005	ug/l #	38
31) Cyclohexane	7.985	56	852	1.332	ug/l #	1
36) 1,1-Dichloropropene	7.979	75	3073	4.284	ug/l #	47
38) Carbon Tetrachloride	7.973	117	4794	5.879	ug/l #	13
51) 4-Methyl-2-Pentanone	10.326	43	497	1.551	ug/l #	1
76) 1,2,3-Trichloropropane	12.626	75	20263	45.289	ug/l #	100
81) trans-1,4-Dichloro-2-b...	12.626	75	20263	112.367	ug/l #	7
-----						

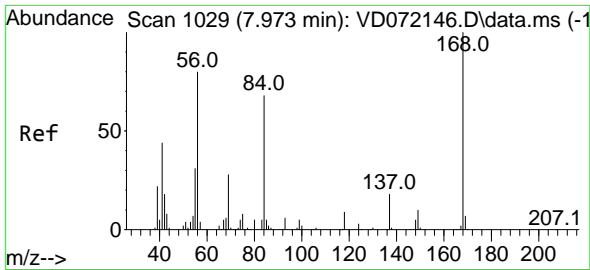
(#) = qualifier out of range (m) = manual integration (+) = signals summed

Data Path : Z:\voasrv\HPCHEM1\MSVOA\_D\Data\VD031522\  
 Data File : VD072187.D  
 Acq On : 15 Mar 2022 14:25  
 Operator : VA/SY  
 Sample : N1851-05  
 Misc : 5.05G/5.00ml/MSVOA\_D/SOIL  
 ALS Vial : 10 Sample Multiplier: 1

Instrument :  
 MSVOA\_D  
 ClientSampleId :  
 DUM-36

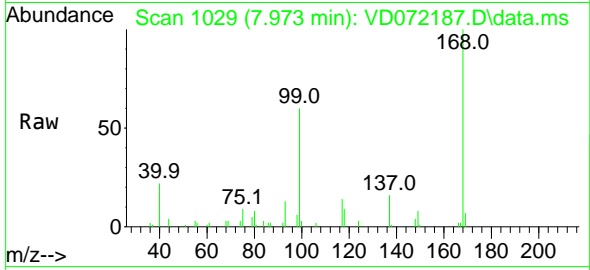
Quant Time: Mar 15 17:45:57 2022  
 Quant Method : Z:\voasrv\HPCHEM1\MSVOA\_D\Method\82D031122S.M  
 Quant Title : SW846 8260  
 QLast Update : Mon Mar 14 05:18:06 2022  
 Response via : Initial Calibration



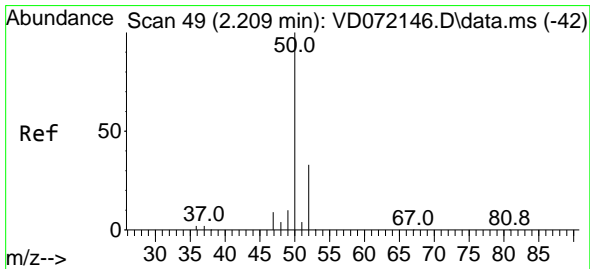
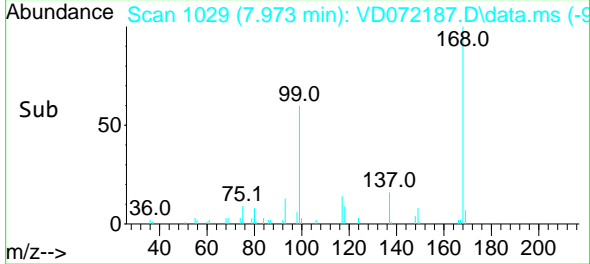
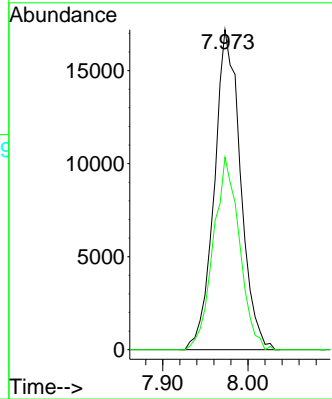


#1  
 Pentafluorobenzene  
 Concen: 50.000 ug/l  
 RT: 7.973 min Scan# 10  
 Delta R.T. 0.000 min  
 Lab File: VD072187.D  
 Acq: 15 Mar 2022 14:25

Instrument :  
 MSVOA\_D  
 ClientSampleId :  
 DUM-36

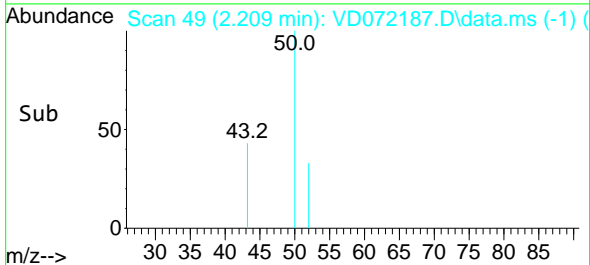
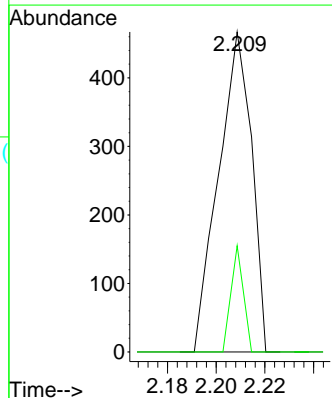
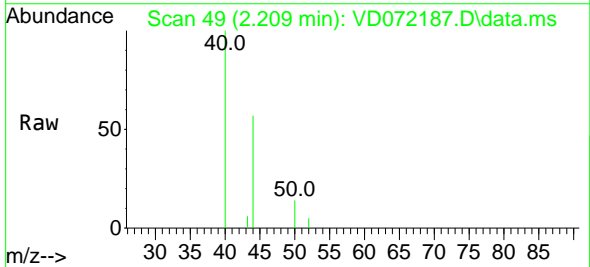


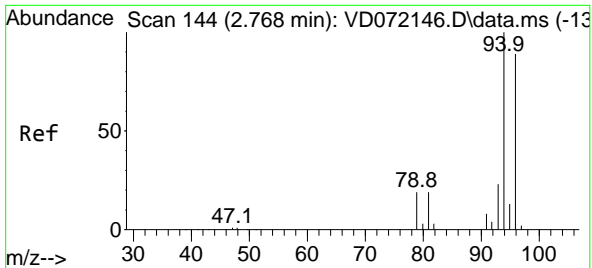
Tgt Ion:168 Resp: 36723  
 Ion Ratio Lower Upper  
 168 100  
 99 60.2 49.8 74.6



#3  
 Chloromethane  
 Concen: 1.458 ug/l  
 RT: 2.209 min Scan# 49  
 Delta R.T. -0.000 min  
 Lab File: VD072187.D  
 Acq: 15 Mar 2022 14:25

Tgt Ion: 50 Resp: 440  
 Ion Ratio Lower Upper  
 50 100  
 52 33.2 27.4 41.0

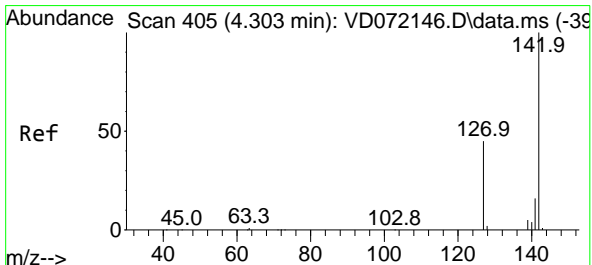
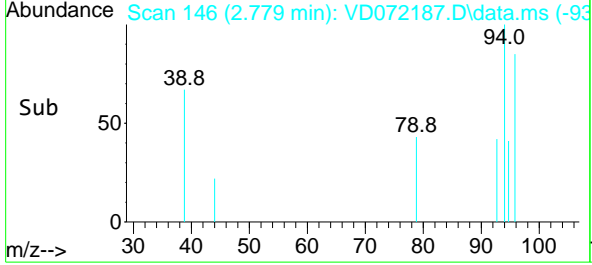
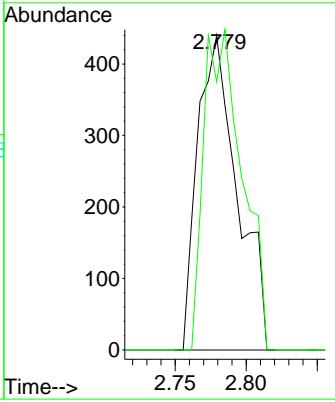
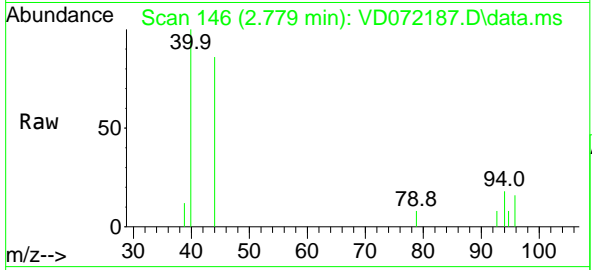




#5  
 Bromomethane  
 Concen: 4.517 ug/l  
 RT: 2.779 min Scan# 146  
 Delta R.T. 0.012 min  
 Lab File: VD072187.D  
 Acq: 15 Mar 2022 14:25

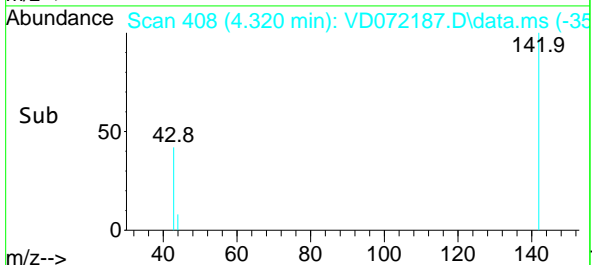
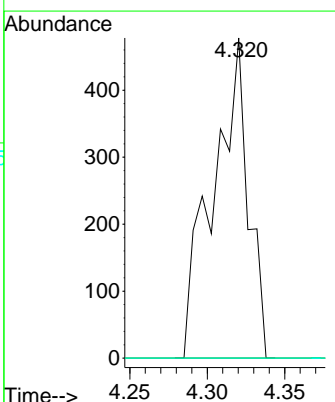
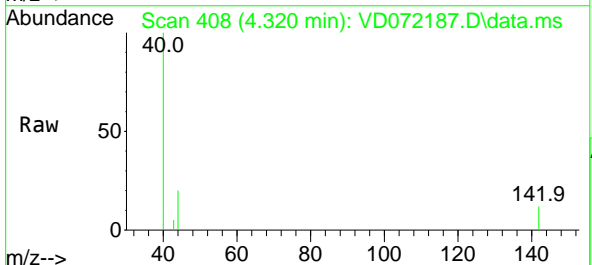
Instrument : MSVOA\_D  
 Client Sample Id : DUM-36

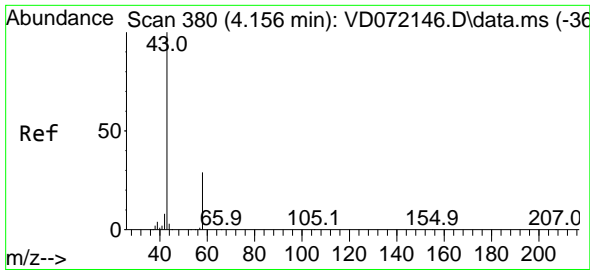
Tgt Ion: 94 Resp: 857  
 Ion Ratio Lower Upper  
 94 100  
 96 85.2 77.6 116.4



#10  
 Methyl Iodide  
 Concen: 4.141 ug/l  
 RT: 4.320 min Scan# 408  
 Delta R.T. 0.017 min  
 Lab File: VD072187.D  
 Acq: 15 Mar 2022 14:25

Tgt Ion:142 Resp: 753  
 Ion Ratio Lower Upper  
 142 100  
 127 0.0 37.3 55.9#  
 141 0.0 11.7 17.5#

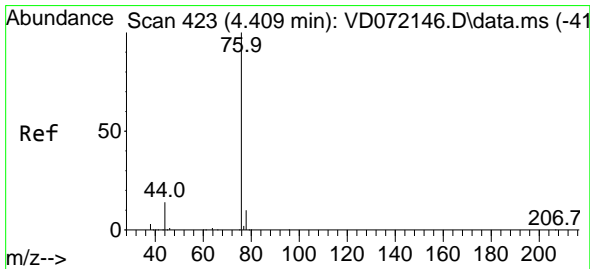
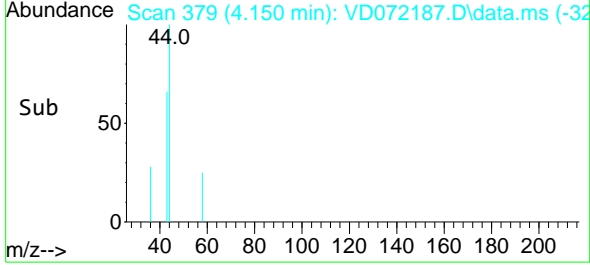
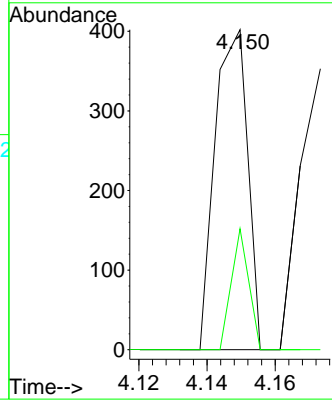
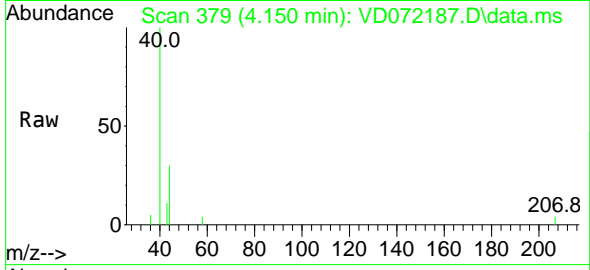




#16  
 Acetone  
 Concen: 2.994 ug/l  
 RT: 4.150 min Scan# 31  
 Delta R.T. -0.006 min  
 Lab File: VD072187.D  
 Acq: 15 Mar 2022 14:25

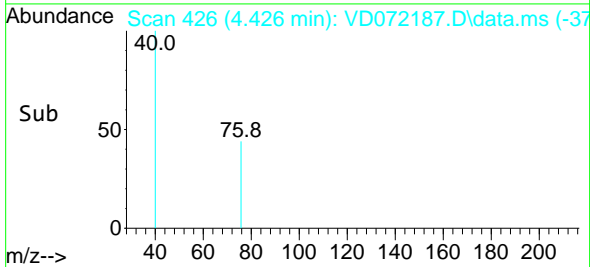
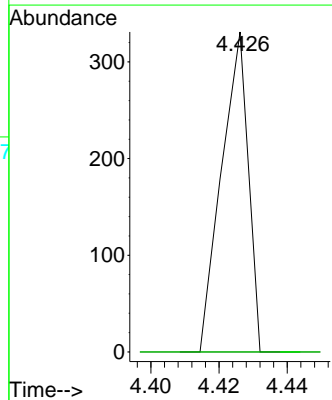
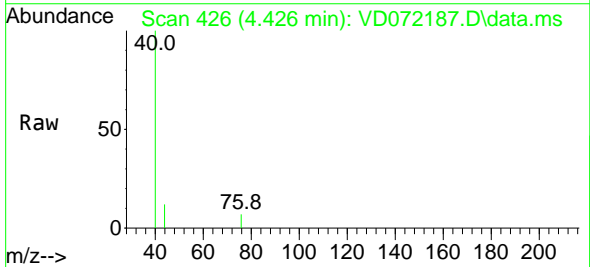
Instrument :  
 MSVOA\_D  
 ClientSampleId :  
 DUM-36

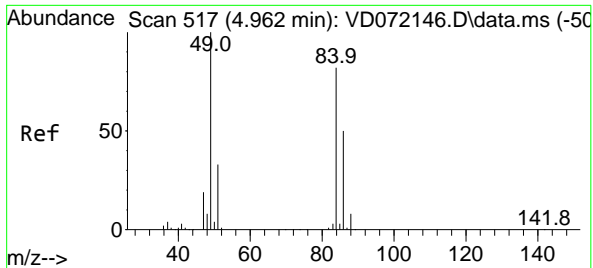
Tgt Ion: 43 Resp: 266  
 Ion Ratio Lower Upper  
 43 100  
 58 37.8 22.1 33.1#



#17  
 Carbon Disulfide  
 Concen: 1.722 ug/l  
 RT: 4.426 min Scan# 426  
 Delta R.T. 0.017 min  
 Lab File: VD072187.D  
 Acq: 15 Mar 2022 14:25

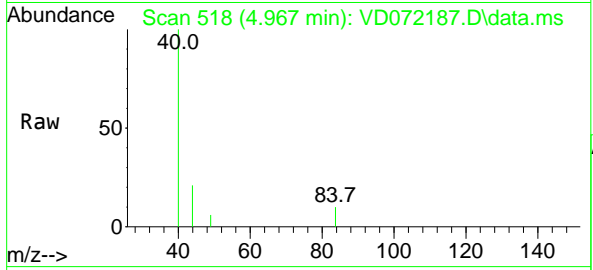
Tgt Ion: 76 Resp: 180  
 Ion Ratio Lower Upper  
 76 100  
 78 0.0 7.5 11.3#





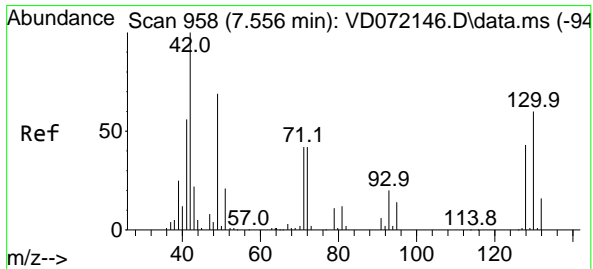
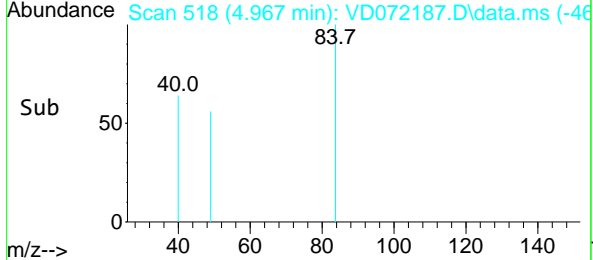
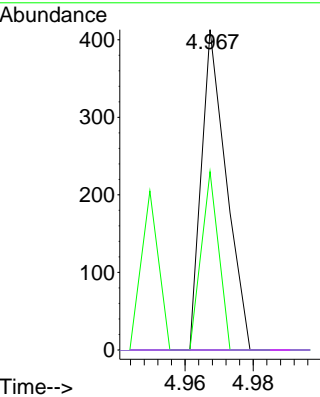
#20  
 Methylene Chloride  
 Concen: Below Cal  
 RT: 4.967 min Scan# 518  
 Delta R.T. 0.005 min  
 Lab File: VD072187.D  
 Acq: 15 Mar 2022 14:25

Instrument : MSVOA\_D  
 ClientSampleId : DUM-36



Tgt Ion: 84 Resp: 208

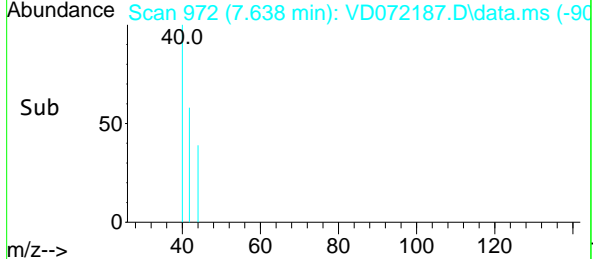
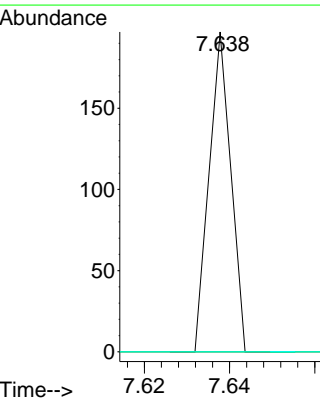
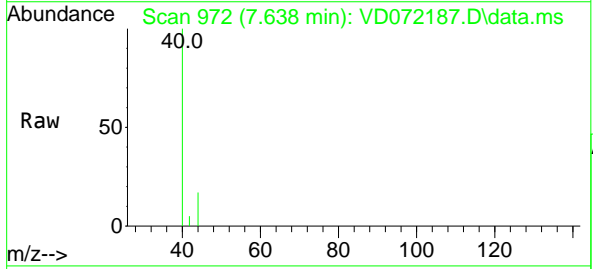
Ion	Ratio	Lower	Upper
84	100		
49	55.7	112.8	169.2#
51	0.0	32.6	48.8#
86	0.0	47.9	71.9#

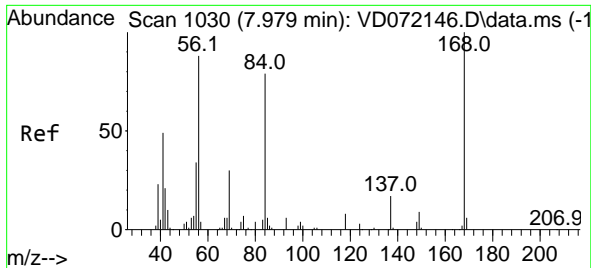


#29  
 Tetrahydrofuran  
 Concen: 1.005 ug/l  
 RT: 7.638 min Scan# 972  
 Delta R.T. 0.082 min  
 Lab File: VD072187.D  
 Acq: 15 Mar 2022 14:25

Tgt Ion: 42 Resp: 70

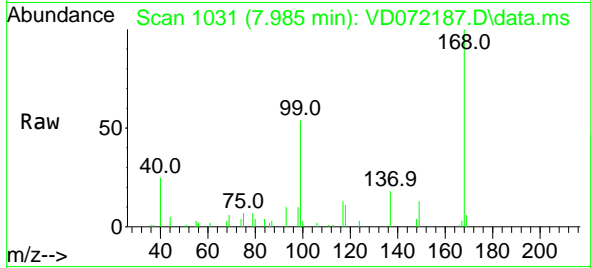
Ion	Ratio	Lower	Upper
42	100		
72	0.0	30.7	46.1#
71	0.0	28.6	43.0#



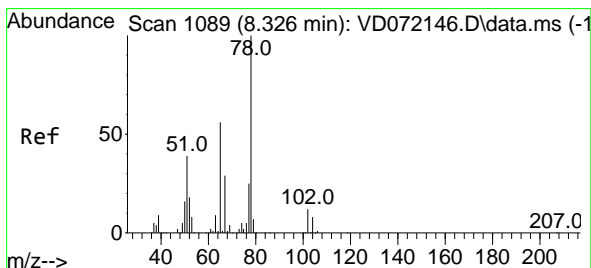
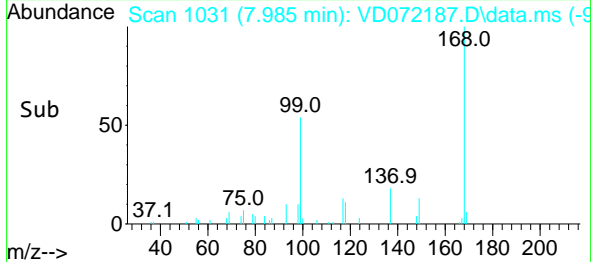
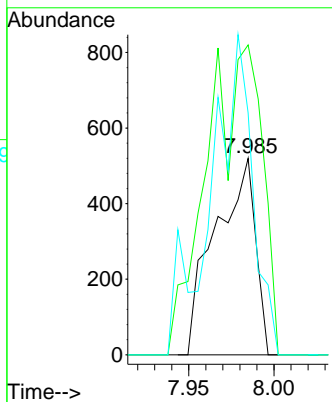


#31  
 Cyclohexane  
 Concen: 1.332 ug/l  
 RT: 7.985 min Scan# 1031  
 Delta R.T. 0.006 min  
 Lab File: VD072187.D  
 Acq: 15 Mar 2022 14:25

Instrument : MSVOA\_D  
 ClientSampleId : DUM-36

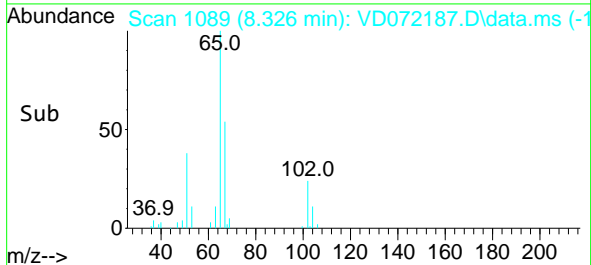
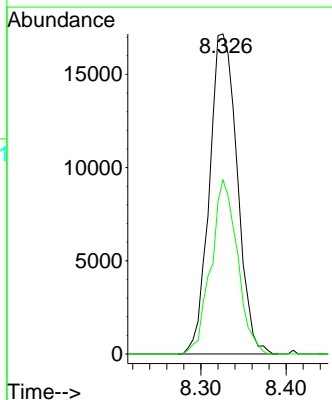
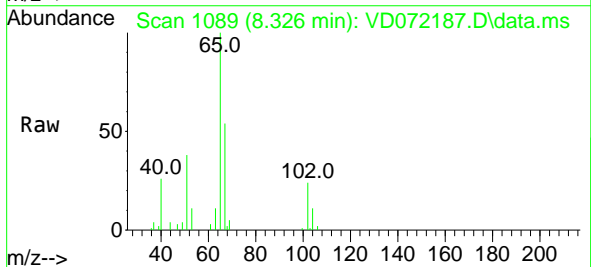


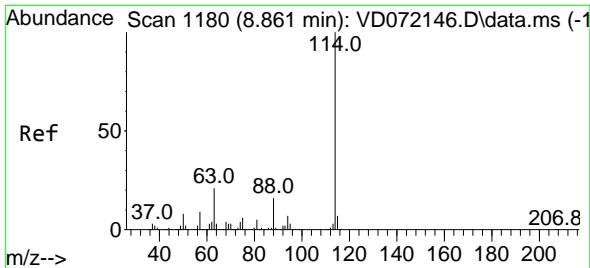
Tgt Ion: 56 Resp: 852  
 Ion Ratio Lower Upper  
 56 100  
 69 157.7 25.4 38.2#  
 84 123.1 63.0 94.4#



#33  
 1,2-Dichloroethane-d4  
 Concen: 95.075 ug/l  
 RT: 8.326 min Scan# 1089  
 Delta R.T. -0.000 min  
 Lab File: VD072187.D  
 Acq: 15 Mar 2022 14:25

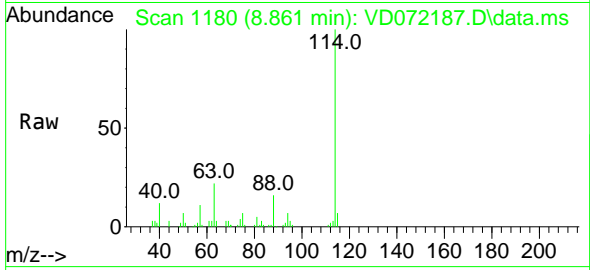
Tgt Ion: 65 Resp: 38910  
 Ion Ratio Lower Upper  
 65 100  
 67 51.7 0.0 101.4





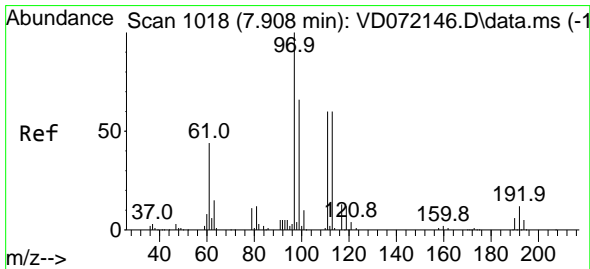
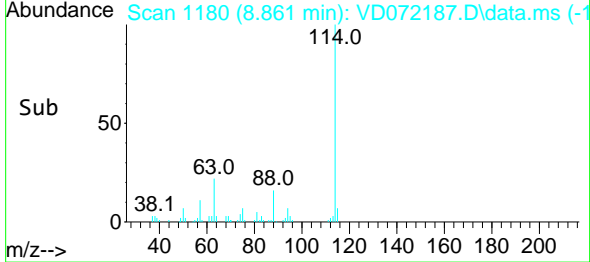
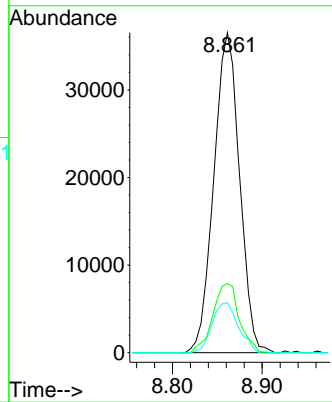
#34  
 1,4-Difluorobenzene  
 Concen: 50.000 ug/l  
 RT: 8.861 min Scan# 1180  
 Delta R.T. -0.000 min  
 Lab File: VD072187.D  
 Acq: 15 Mar 2022 14:25

Instrument : MSVOA\_D  
 ClientSampleId : DUM-36



Tgt Ion:114 Resp: 72669

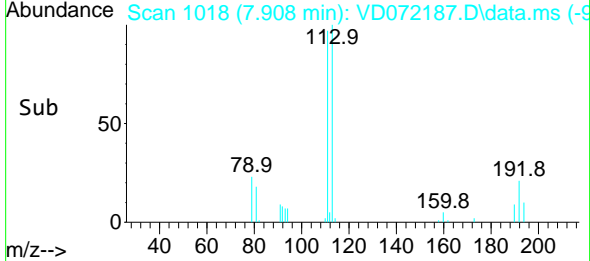
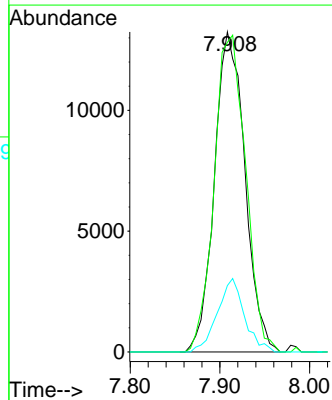
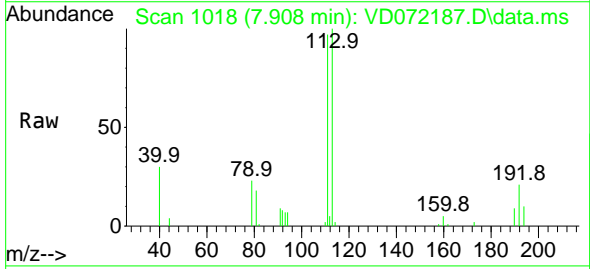
Ion	Ratio	Lower	Upper
114	100		
63	21.6	0.0	46.6
88	15.6	0.0	33.2



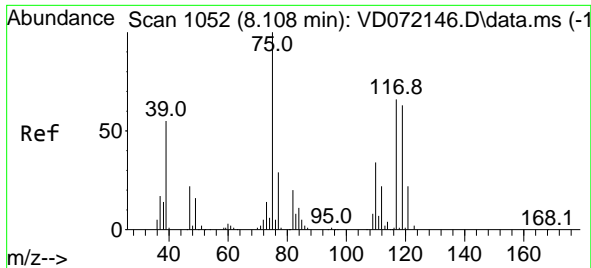
#35  
 Dibromofluoromethane  
 Concen: 61.098 ug/l  
 RT: 7.908 min Scan# 1018  
 Delta R.T. -0.000 min  
 Lab File: VD072187.D  
 Acq: 15 Mar 2022 14:25

Tgt Ion:113 Resp: 31244

Ion	Ratio	Lower	Upper
113	100		
111	102.2	83.8	125.6
192	20.4	14.6	21.8



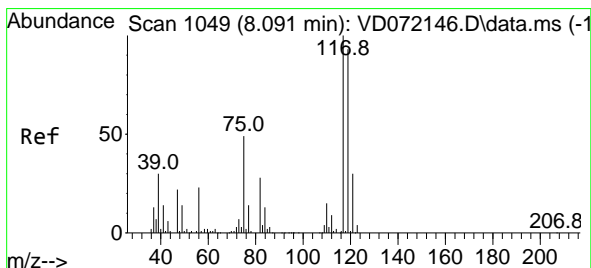
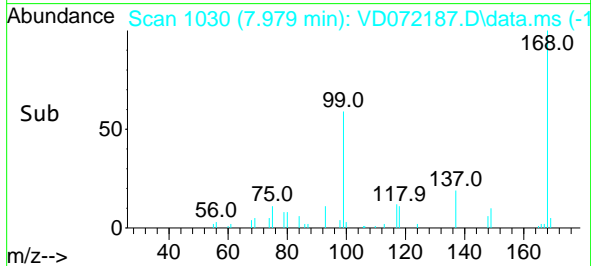
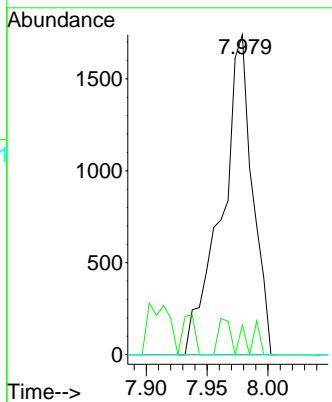
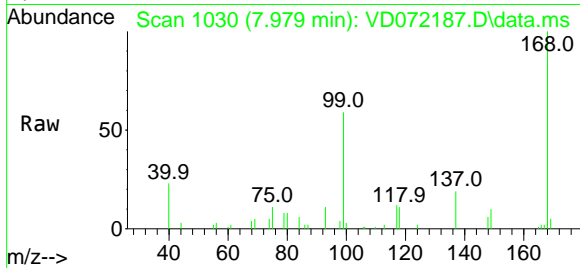




#36  
 1,1-Dichloropropene  
 Concen: 4.284 ug/l  
 RT: 7.979 min Scan# 1029  
 Delta R.T. -0.130 min  
 Lab File: VD072187.D  
 Acq: 15 Mar 2022 14:25

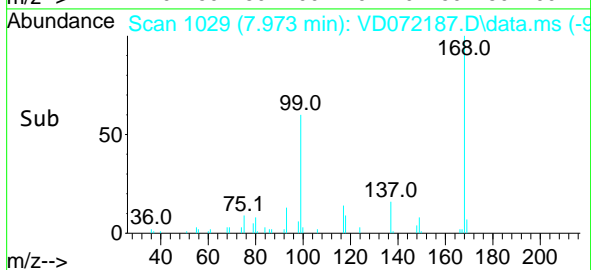
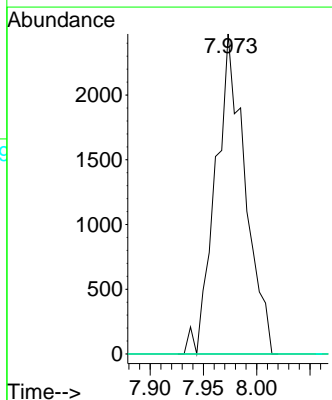
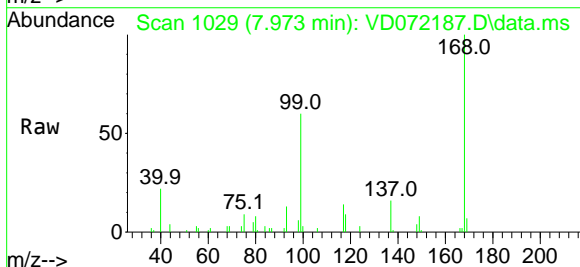
Instrument : MSVOA\_D  
 Client Sample Id : DUM-36

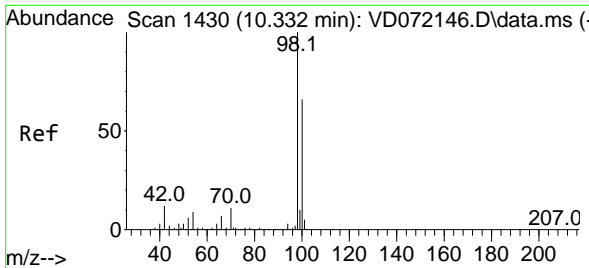
Tgt Ion	Resp	Lower	Upper
75	3073		
75	100		
110	4.4	16.4	49.1#
77	0.0	24.2	36.2#



#38  
 Carbon Tetrachloride  
 Concen: 5.879 ug/l  
 RT: 7.973 min Scan# 1029  
 Delta R.T. -0.118 min  
 Lab File: VD072187.D  
 Acq: 15 Mar 2022 14:25

Tgt Ion	Resp	Lower	Upper
117	4794		
117	100		
119	0.0	75.8	113.6#
121	0.0	24.5	36.7#

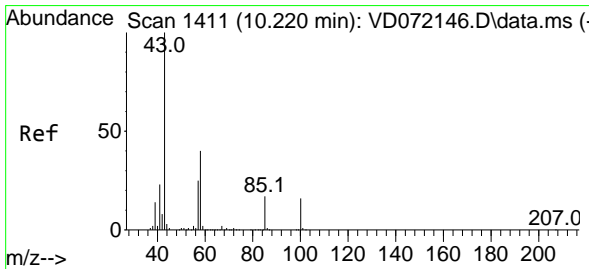
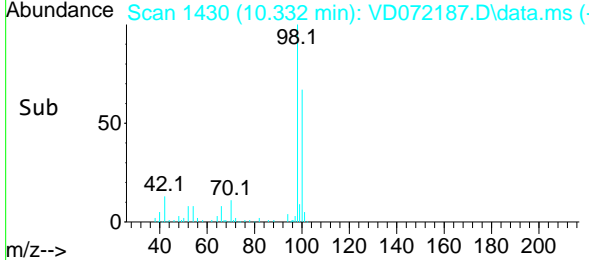
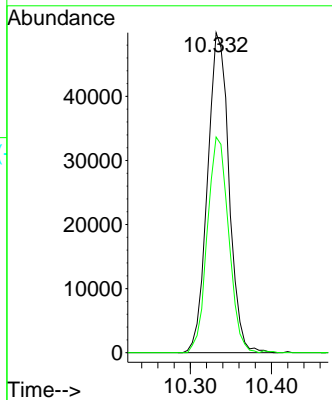
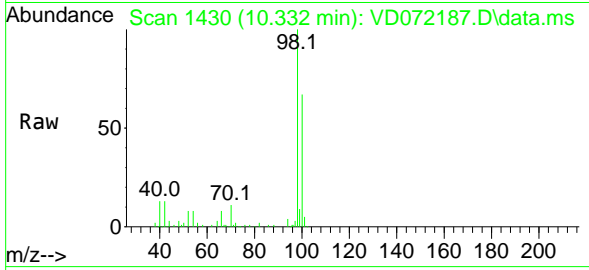




#50  
 Toluene-d8  
 Concen: 48.965 ug/l  
 RT: 10.332 min Scan# 1429  
 Delta R.T. -0.000 min  
 Lab File: VD072187.D  
 Acq: 15 Mar 2022 14:25

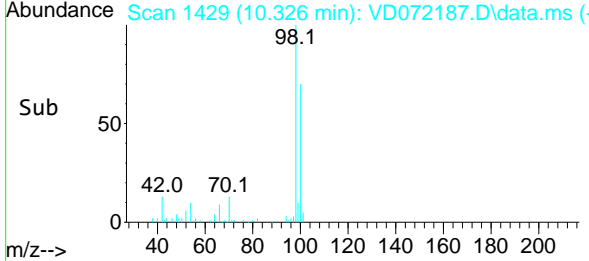
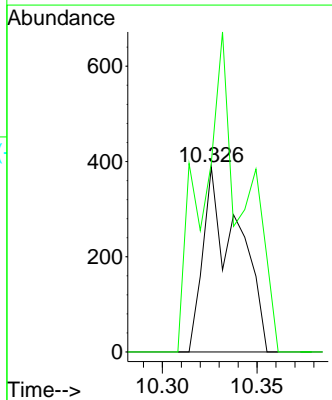
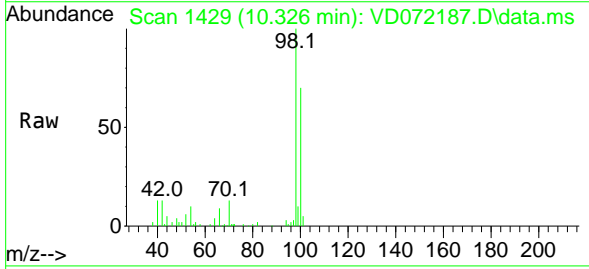
Instrument : MSVOA\_D  
 ClientSampleId : DUM-36

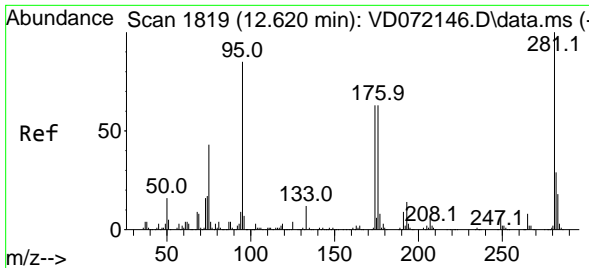
Tgt Ion: 98 Resp: 91557  
 Ion Ratio Lower Upper  
 98 100  
 100 67.1 52.4 78.6



#51  
 4-Methyl-2-Pentanone  
 Concen: 1.551 ug/l  
 RT: 10.326 min Scan# 1429  
 Delta R.T. 0.106 min  
 Lab File: VD072187.D  
 Acq: 15 Mar 2022 14:25

Tgt Ion: 43 Resp: 497  
 Ion Ratio Lower Upper  
 43 100  
 58 203.4 28.6 43.0#



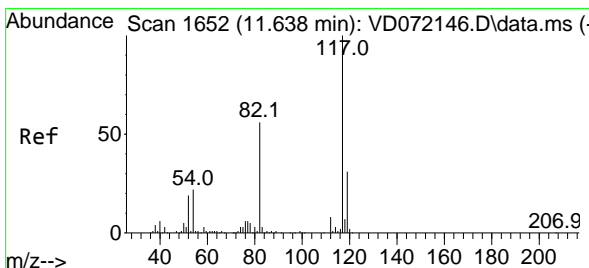
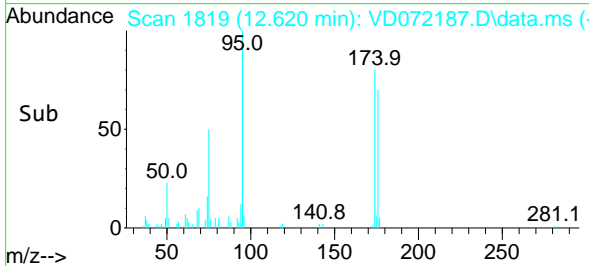
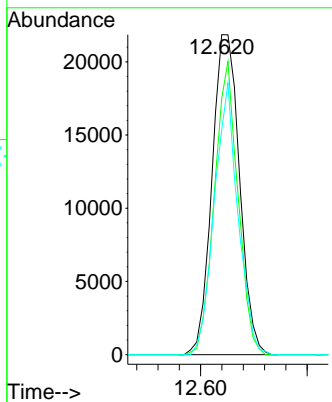
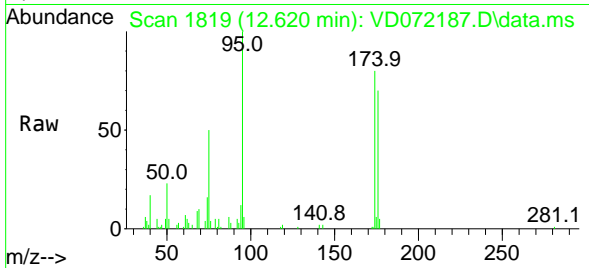


#62  
 4-Bromofluorobenzene  
 Concen: 53.807 ug/l  
 RT: 12.620 min Scan# 1819  
 Delta R.T. -0.000 min  
 Lab File: VD072187.D  
 Acq: 15 Mar 2022 14:25

Instrument : MSVOA\_D  
 ClientSampleId : DUM-36

Tgt Ion: 95 Resp: 39093

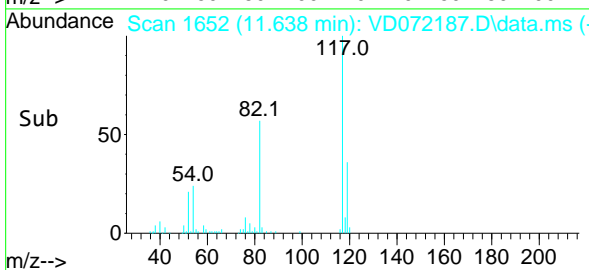
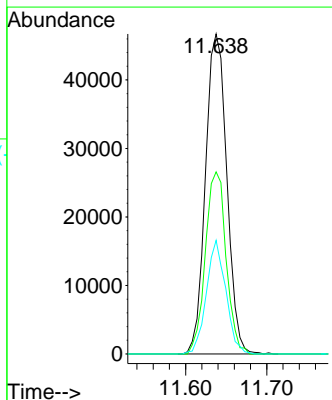
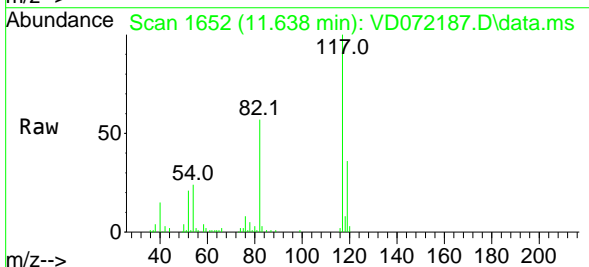
Ion	Ratio	Lower	Upper
95	100		
174	78.6	0.0	152.8
176	73.3	0.0	145.4

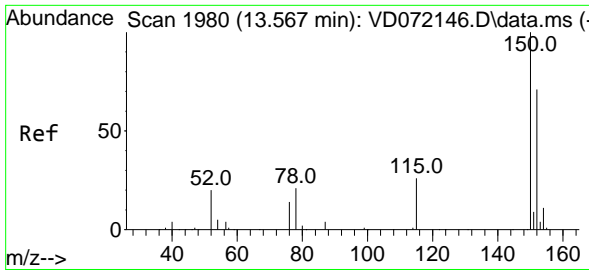


#63  
 Chlorobenzene-d5  
 Concen: 50.000 ug/l  
 RT: 11.638 min Scan# 1652  
 Delta R.T. -0.000 min  
 Lab File: VD072187.D  
 Acq: 15 Mar 2022 14:25

Tgt Ion: 117 Resp: 85166

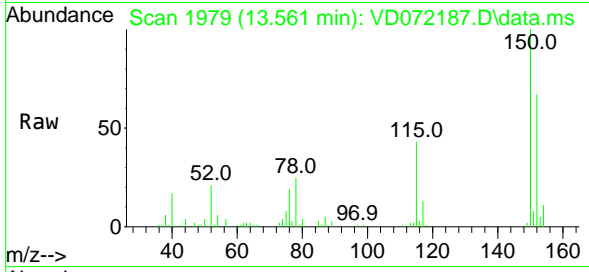
Ion	Ratio	Lower	Upper
117	100		
82	56.9	45.3	67.9
119	35.5	26.6	40.0



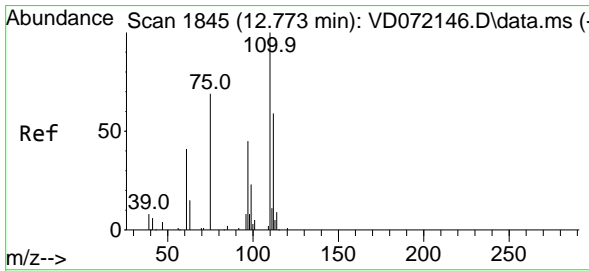
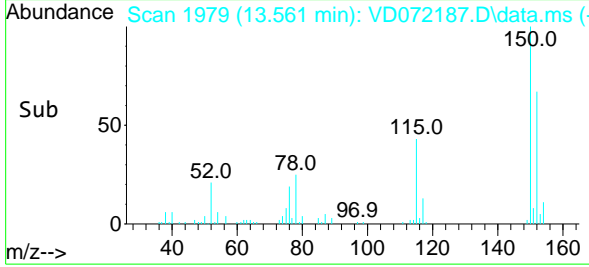
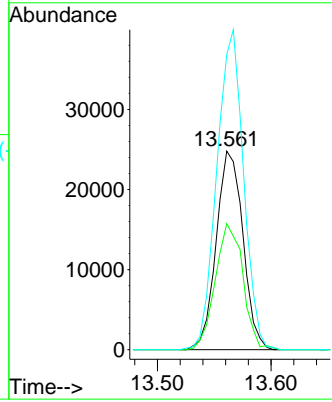


#72  
 1,4-Dichlorobenzene-d4  
 Concen: 50.000 ug/l  
 RT: 13.561 min Scan# 1980  
 Delta R.T. -0.006 min  
 Lab File: VD072187.D  
 Acq: 15 Mar 2022 14:25

Instrument : MSVOA\_D  
 ClientSampleId : DUM-36

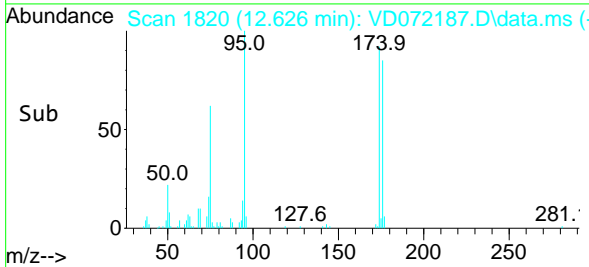
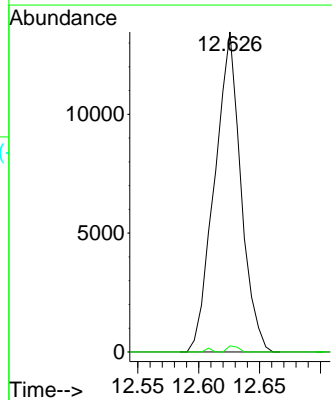
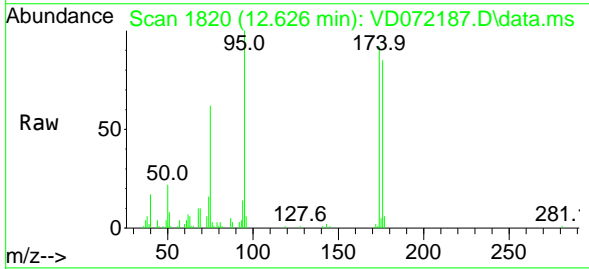


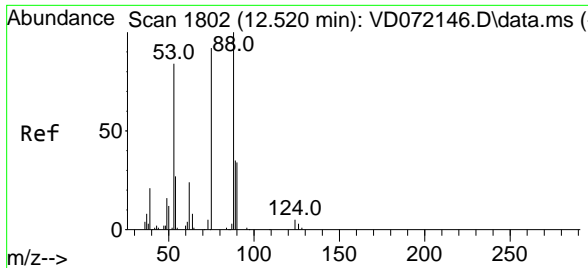
Tgt Ion:152 Resp: 40560  
 Ion Ratio Lower Upper  
 152 100  
 115 65.5 31.3 93.8  
 150 160.9 0.0 348.6



#76  
 1,2,3-Trichloropropane  
 Concen: 45.289 ug/l  
 RT: 12.626 min Scan# 1820  
 Delta R.T. -0.147 min  
 Lab File: VD072187.D  
 Acq: 15 Mar 2022 14:25

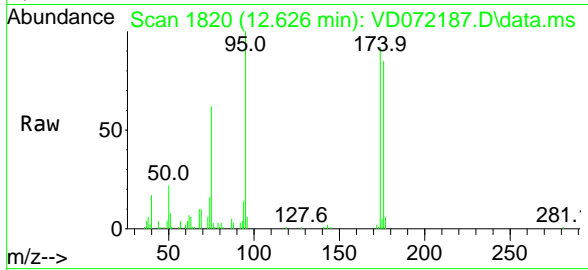
Tgt Ion: 75 Resp: 20263  
 Ion Ratio Lower Upper  
 75 100  
 77 0.8 0.0 0.0#





#81  
 trans-1,4-Dichloro-2-butene  
 Concen: 112.367 ug/l  
 RT: 12.626 min Scan# 11  
 Delta R.T. 0.106 min  
 Lab File: VD072187.D  
 Acq: 15 Mar 2022 14:25

Instrument :  
 MSVOA\_D  
 ClientSampleId :  
 DUM-36



Tgt Ion: 75 Resp: 20263

Ion	Ratio	Lower	Upper
75	100		
53	0.0	86.5	129.7#
89	0.0	33.9	50.9#

