

Data Path : Z:\VOASRV\HPCHEM1\MSVOA D\DATA\VD031619\
 Data File : VD061109.D
 Acq On : 16 Mar 2019 15:09
 Operator : VA/AP
 Sample : K1905-03
 Misc : 5.56g/5ml/MSVOA D/SOIL
 ALS Vial : 10 Sample Multiplier: 1

Integration Parameters: RTEINT.P

Integrator: RTE
 Smoothing : ON Filtering: 5
 Sampling : 1 Min Area: 3 % of largest Peak
 Start Thrs: 0.2 Max Peaks: 100
 Stop Thrs : 0 Peak Location: TOP

If leading or trailing edge < 100 prefer < Baseline drop else tangent >
 Peak separation: 5

Method : Z:\VOASRV\HPCHEM1\MSVOA_D\METHOD\82D030719S.M
 Title : SW846 8260

Signal : TIC

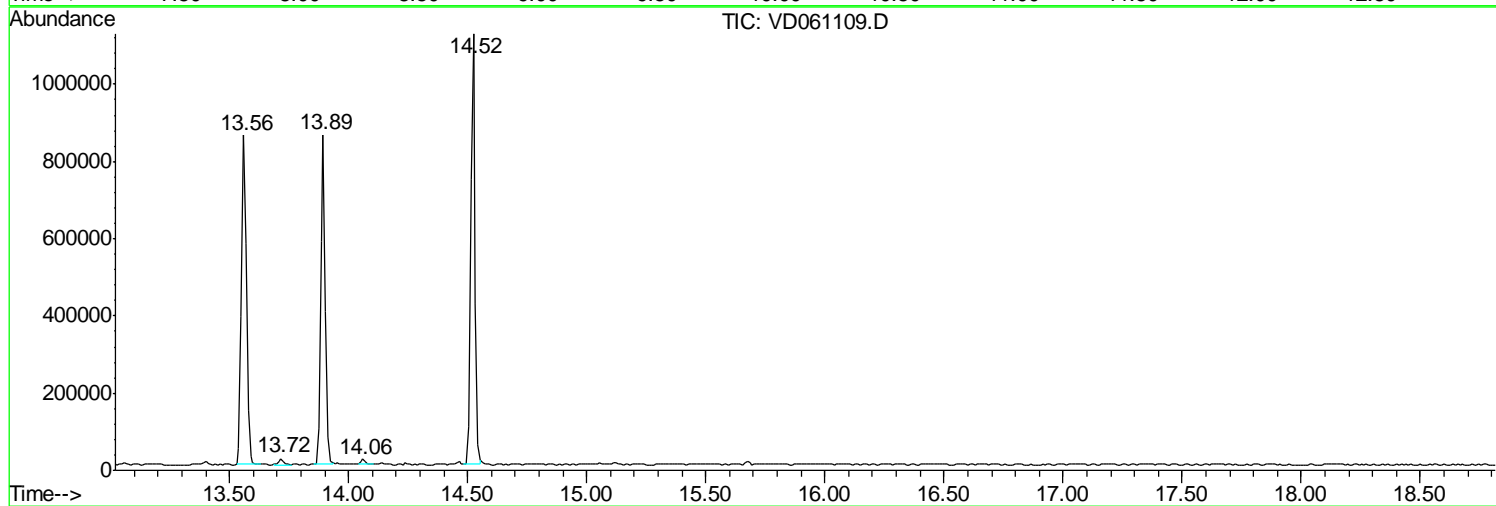
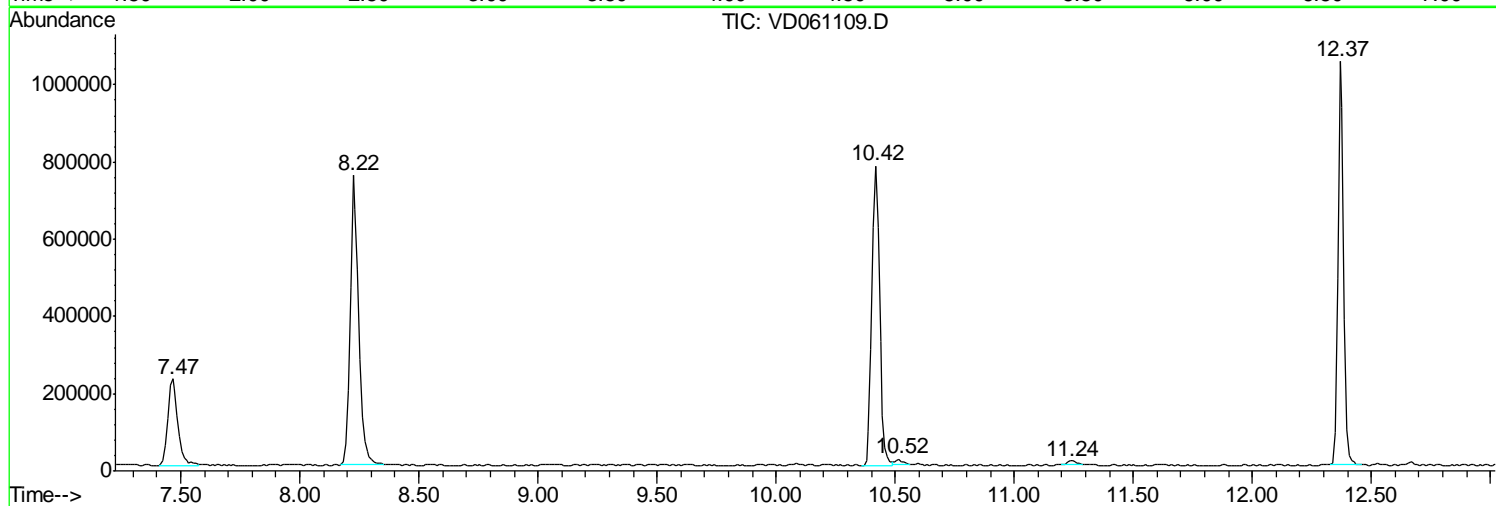
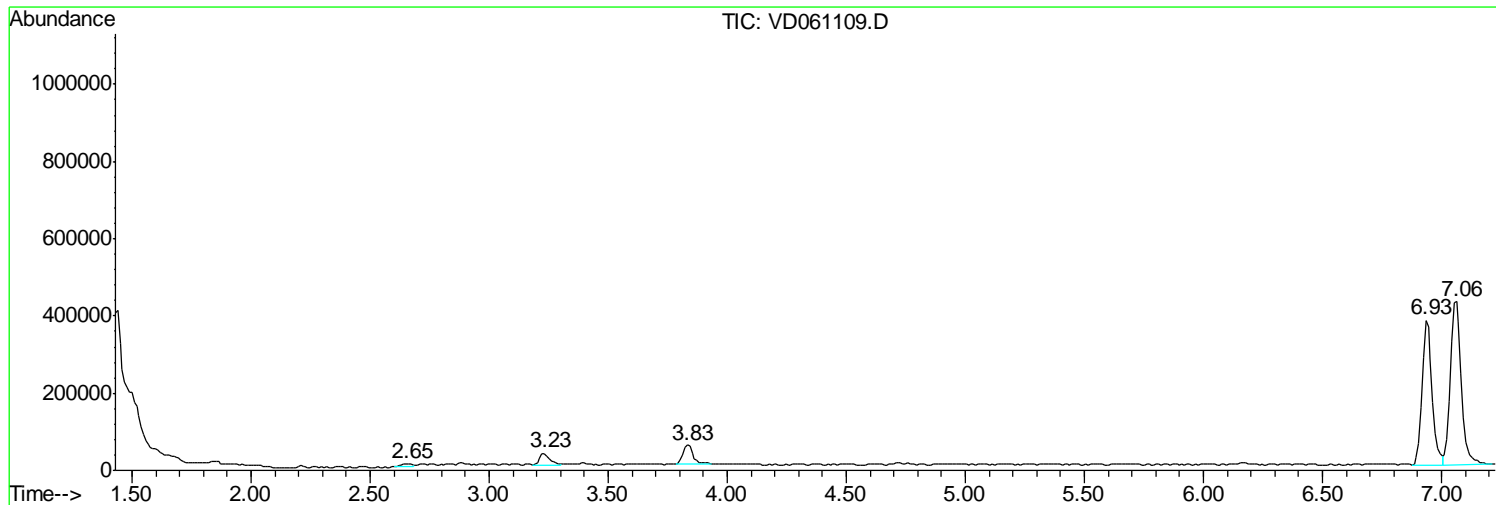
peak #	R.T. min	first scan	max scan	last scan	PK TY	peak height	corr. area	corr. % max.	% of total
1	2.651	120	125	128	rBV2	7805	28065	1.51%	0.221%
2	3.232	179	184	191	rBV2	29142	88368	4.77%	0.697%
3	3.832	240	245	255	rBV	50341	150546	8.12%	1.187%
4	6.933	554	560	567	rBV	375083	1090627	58.85%	8.598%
5	7.061	567	573	588	rVB	421639	1370203	73.94%	10.802%
6	7.465	608	614	625	rBV	223339	655674	35.38%	5.169%
7	8.223	686	691	704	rVB	747448	1853218	100.00%	14.610%
8	10.418	908	914	921	rBV	776376	1741881	93.99%	13.732%
9	10.517	921	924	928	rVB	14577	28813	1.55%	0.227%
10	11.235	993	997	1002	rBV3	11067	31542	1.70%	0.249%
11	12.368	1108	1112	1121	rVB	1043616	1797931	97.02%	14.174%
12	13.559	1230	1233	1240	rVB	852305	1193153	64.38%	9.406%
13	13.716	1246	1249	1253	rVB2	16136	23318	1.26%	0.184%
14	13.893	1263	1267	1271	rBV	853268	1180662	63.71%	9.308%
15	14.061	1282	1284	1288	rBV2	14501	20168	1.09%	0.159%
16	14.523	1327	1331	1334	rBV	1114053	1430541	77.19%	11.278%

Sum of corrected areas: 12684710

Data Path : Z:\VOASRV\HPCHEM1\MSVOA D\DATA\VD031619\
Data File : VD061109.D
Acq On : 16 Mar 2019 15:09
Operator : VA/AP
Sample : K1905-03
Misc : 5.56µ/5ml/MSVOA D/SOIL
ALS Vial : 10 Sample Multiplier: 1

Quant Method : Z:\VOASRV\HPCHEM1\MSVOA_D\METHOD\82D030719S.M
Quant Title : SW846 8260

TIC Library : C:\DATABASE\NIST11.L
TIC Integration Parameters: LSCINT.P



Data Path : Z:\VOASRV\HPCHEM1\MSVOA D\DATA\VD031619\
 Data File : VD061109.D
 Acq On : 16 Mar 2019 15:09
 Operator : VA/AP
 Sample : K1905-03
 Misc : 5.56µ/5ml/MSVOA D/SOIL
 ALS Vial : 10 Sample Multiplier: 1

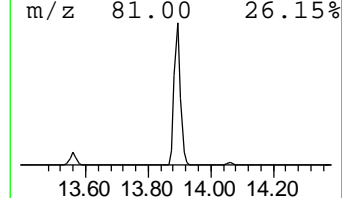
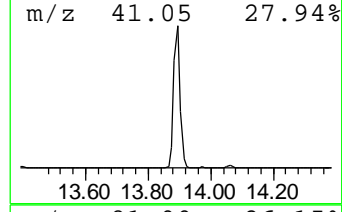
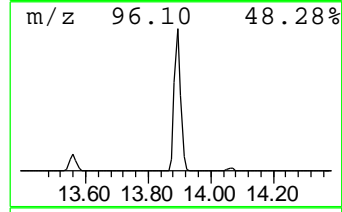
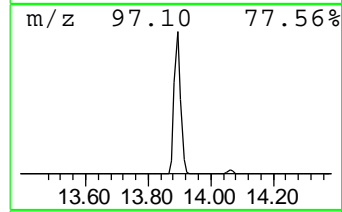
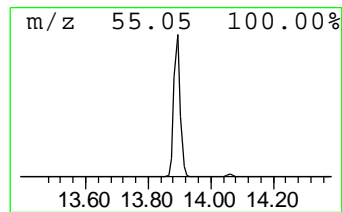
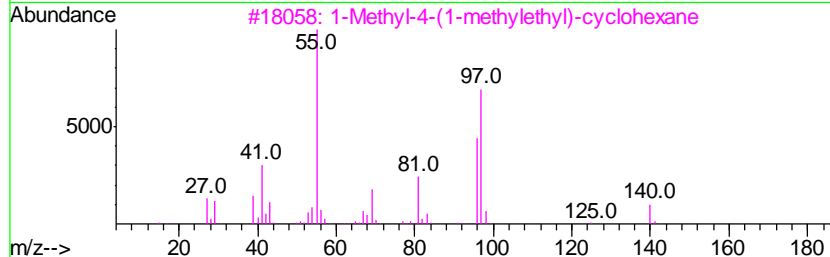
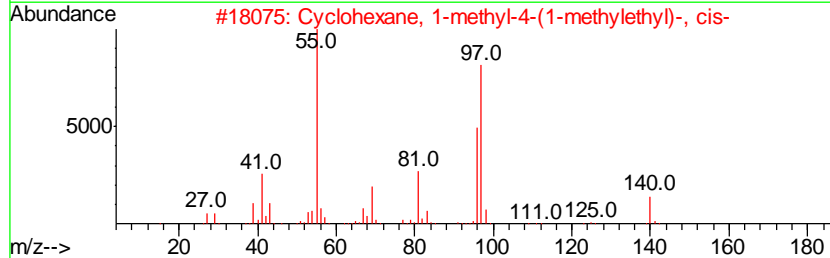
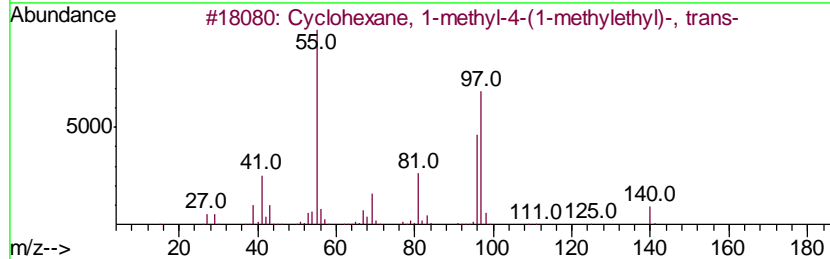
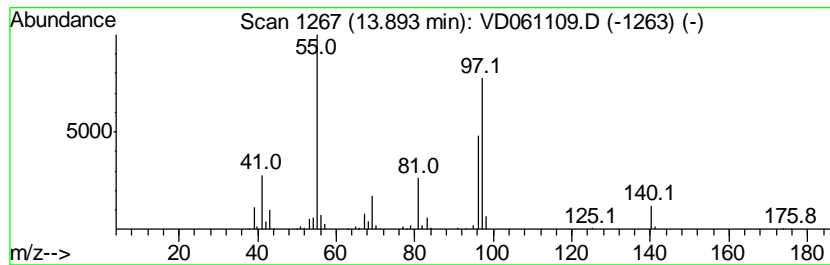
Quant Method : Z:\VOASRV\HPCHEM1\MSVOA_D\METHOD\82D030719S.M
 Quant Title : SW846 8260

TIC Library : C:\DATABASE\NIST11.L
 TIC Integration Parameters: LSCINT.P

 Peak Number 1 Cyclohexane, 1-methyl-4-(1-... Concentration Rank 1

R.T.	EstConc	Area	Relative to ISTD	R.T.
13.89	41.27 ug/l	1180660	1,4-Dichlorobenzene-d4	14.52

Hit#	of	Tentative ID	MW	MolForm	CAS#	Qual
1	5	Cyclohexane, 1-methyl-4-(1-methy...	140	C10H20	001678-82-6	97
2		Cyclohexane, 1-methyl-4-(1-methy...	140	C10H20	006069-98-3	96
3		1-Methyl-4-(1-methylethyl)-cyclo...	140	C10H20	000099-82-1	94
4		m-Menthane, (1S,3S)-(+)-	140	C10H20	013837-67-7	91
5		m-Menthane, (1S,3R)-(+)-	140	C10H20	013837-66-6	86



Data Path : Z:\VOASRV\HPCHEM1\MSVOA_D\DATA\VD031619\
Data File : VD061109.D
Acq On : 16 Mar 2019 15:09
Operator : VA/AP
Sample : K1905-03
Misc : 5.56g/5ml/MSVOA_D/SOIL
ALS Vial : 10 Sample Multiplier: 1

Quant Method : Z:\VOASRV\HPCHEM1\MSVOA_D\METHOD\82D030719S.M
Quant Title : SW846 8260

TIC Library : C:\DATABASE\NIST11.L
TIC Integration Parameters: LSCINT.P

TIC Top Hit name	RT	EstConc	Units	Response	--Internal Standard--			
					#	RT	Resp	Conc
Cyclohexane, 1-me...	13.89	41.3	ug/l	1180660	4	14.52	1430540	50.0